

 **DATALOGIC**

JOYA
touch

Multi-Purpose Device for Retail



User's Manual

Datalogic S.r.l.

Via San Vitalino 13
40012 Calderara di Reno (BO)
Italy
Tel. +39 051 3147011
Fax +39 051 3147205

©2016-2017 Datalogic S.p.A. and/or its affiliates

♦ All rights reserved. ♦ Without limiting the rights under copyright, no part of this documentation may be reproduced, stored in or introduced into a retrieval system, or transmitted in any form or by any means, or for any purpose, without the express written permission of Datalogic S.p.A. and/or its affiliates. Owners of Datalogic products are hereby granted a non-exclusive, revocable license to reproduce and transmit this documentation for the purchaser's own internal business purposes. Purchaser shall not remove or alter any proprietary notices, including copyright notices, contained in this documentation and shall ensure that all notices appear on any reproductions of the documentation. Should future revisions of this manual be published, you can acquire printed versions by contacting your Datalogic representative. Electronic versions may either be downloadable from the Datalogic website (www.datalogic.com) or provided on appropriate media. If you visit our website and would like to make comments or suggestions about this or other Datalogic publications, please let us know via the "Contact Datalogic" page.

Disclaimer

Datalogic has taken reasonable measures to provide information in this manual that is complete and accurate, however, Datalogic reserves the right to change any specification at any time without prior notice. Datalogic and the Datalogic logo are registered trademarks of Datalogic S.p.A. in many countries, including the U.S.A. and the E.U. The Joya logo is a trademark of Datalogic S.p.A. and/or its affiliates, registered in the U.S. and the E.U. All other trademarks and brands are property of their respective owners.

Patents

Patent. See www.patents.datalogic.com for patent list.



Table of Contents

Introduction	1
Conventions	1
Product Presentation	2
Available Models	3
Out of the Box	5
General View	6
Front View	6
Back View	7
Top View	8
Side View	8
Accessories	10
Battery	11
Install the Battery	11
Charge the Battery	13
Charge with the Single Slot Dock Charge Only	13
Charge with the 3-Slot Cradle	14
Battery Information	16
Battery Safety Guidelines	19
Use and Functioning	23
Getting Started	23
Taskbar	25
Touch Gestures	26
Data Capture	27
Imager Data Capture	27
Resetting the Joya Touch	30

Warm Boot	30
Cold Boot	31
Clean Boot	31
Control Panel	33
Data Capture Configuration	34
DL Buttons	52
Persistent Registry	54
Wireless Communications	56
Audio Settings	64
Connecting to other Computers	67
Windows Mobile® Device Center	67
Datalogic Firmware Utility	68
Retrieving a Firmware Image Update	68
Installing DFU on the Host PC	69
Updating the Firmware	70
Datalogic Desktop Utility	71
Administrative Options (Admin tab)	72
Locked Web Browser Options (LockedWeb tab)	77
Status Icons Options (Status Tab)	79
Windows Control	80
AppSelector Options (AppSelect tab)	82
Locked Web Browser	85
FlashDisk Directory File Management	86
Connections	89
USB Connection	89
USB Direct Connection	89
Wi-Fi Connection	90
Bluetooth® Serial Connection	92
Wireless and Radio Frequencies Warnings	94
Technical Features	97
Technical Data	97

Test Codes	101
Maintenance	109
Cleaning the Device	109
Ergonomic Recommendations	110
Safety and Regulatory Information	111
General Safety Rules	111
Power Supply	112
Laser Safety	113
LED Class	121
Marking and European Economic Area (EEA)	121
Statement of Compliance	122
Radio Technologies and Frequency Bands	125
Information for the User	126
FCC/IC Labeling	127
FCC Compliance	127
ISED Compliance	129
Radiofrequency Radiation Exposure Information	131
WEEE Compliance	132
KC Compliance	133
Support Through the Website	135
Reference Documentation	135
Warranty Terms and Conditions	135
Glossary	137

NOTES



Introduction

Conventions

This manual uses the following conventions:

'Device' and 'Joya Touch' refer to the Joya Touch.

'Dock' refers to the Joya Touch 3-Slot Cradle.

The label artworks may be only a draft. Refer to the product labels for more precise information.

Product Presentation

The Datalogic Joya Touch is a pocket-sized Windows embedded compact 7 powered mobile computer, available in two form factors. This compact, lightweight, and versatile device, combines fully integrated automatic data capture (2D bar code), a wireless charging system and wireless communication capabilities, supporting nearly any application.

The Datalogic Joya Touch system architecture is based on the blend of Intel X-Scale series processors coupled with the Windows Embedded Compact operating system and it was developed to meet the most demanding customer needs.

A huge quantity of on-board memory is available. It enables the user to adapt the terminal for any specific need.

Thanks to its great ergonomics and the state of the art architecture, the Datalogic JOYA TOUCH is the right answer to enhance your business opportunities.

Available Models

The Datalogic Joya Touch is available in different models depending on the features it is equipped with. All options are listed below:

- p/n 911350010 Joya Touch Plus Handheld, FWVGA Full Touch color display 4.3" in diagonal, white-illumination 2D imager engine, Green Spot, radio 802.11 A/B/G/N, 512MB RAM, 1GB Flash, Bluetooth Dual Mode V.4, Windows Embedded Compact 7 with dedicated SDK for developing 3rd party applications. Wavelink Avalanche® device management preloaded. Gray/Blue colors combination (upper case / battery cover).

This model is available also in other colors combinations (indicated colors represent front housing/battery cover):

- 911350014 Grey/Grey
 - 911350015 Grey/Red
 - 911350020 Blue/Yellow
 - 911350021 Orange/Orange
 - 911350022 Green/Green
- p/n 911350011 Joya Touch Plus Pistol Grip, FWVGA Full Touch color display 4.3" in diagonal, white-illumination 2D imager engine, Green Spot, radio 802.11 A/B/G/N, 512MB RAM, 1GB Flash, Bluetooth Dual Mode V.4, Windows Embedded Compact 7 with dedicated SDK for developing 3rd party applications. Wavelink Avalanche® device management preloaded. Grey/Blue/Blue colors combination (upper case / trigger / battery cover).

This model is available also in other colors combinations (indicated colors represent front housing/battery cover/trigger):

- 911350012 Grey/Grey/Blue
 - 911350013 Grey/Red/Red
 - 911350016 Yellow/Yellow/Yellow
 - 911350017 Red/Grey/Grey
 - 911350018 Grey/Orange/Orange
 - 911350019 Grey/Green/Green
- p/n 911350023. Joya Touch Basic Handheld, FWVGA Full Touch color display 4.3" in diagonal, white-illumination 2D imager engine, Green Spot, radio 802.11 A/B/G/N, 512MB RAM, 512GB Flash, Windows Embedded Compact 7 with dedicated SDK for developing 3rd party applications. Wavelink Avalanche® device management preloaded. Gray/Red colors combination (upper case / battery cover).
 - p/n 911350024 Joya Touch Basic Pistol Grip, FWVGA Full Touch color display 4.3" in diagonal, white-illumination 2D imager engine, Green Spot, radio 802.11 A/B/G/N, 512MB RAM, 512GB Flash, Windows Embedded Compact 7 with dedicated SDK for developing 3rd party applications. Wavelink Avalanche® device management preloaded. Grey/Red/Red colors combination (upper case / trigger / battery cover).

For further details about the Datalogic Joya Touch models refer to the web site: www.datalogic.com.

Out of the Box

The Joya Touch package contains:

- Joya Touch (device)
- Rechargeable battery
- Quick Start Guide
- Safety & Regulatory Addendum
- EULA Addendum

Remove all the components from their packaging; check their integrity and compare them with all the packing documents.



CAUTION

Keep the original packaging for use when sending products to the technical assistance center. Damage caused by improper packaging is not covered under the warranty.

General View

Front View



Back View



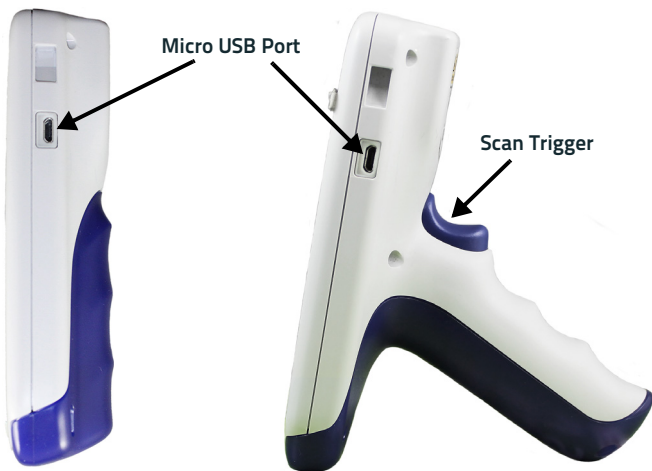
Top View



Side View

Handheld Models

Pistol Grip Models





CAUTION

Do not apply any sticker to the Joya Touch.



Accessories

Cradle

91ACC0043 Joya Touch 3-Slot Cradle

Cradle Accessories

91ACC0045 Joya Touch Cradle Unlock Key (5 PCS)

91ACC0048 Joya Touch 3-Slot Cradle Power Supply. Line Cord required (max 2 cradles on standard charge, max 1 cradle on fast charge per power supply)

91ACC0049 Joya Touch Cradle Power Jumper (5 PCS)

91ACC0050 Joya Touch 3-Slot Cradle Wall Bracket

91ACC0051 Blue Kit to convert Plus Handheld to a Pistol Grip

91ACC0052 Blue Kit to convert Plus Pistol Grip to a Handheld

91ACC0053 Blue Kit to convert Basic Handheld to a Pistol Grip

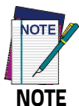
91ACC0054 Blue Kit to convert Basic Pistol Grip to a Handheld

Batteries

91ACC0055 Joya Touch Replacement Battery 3.75V 3030 mAh

Various

91ACC0047 Joya Touch Trolley Holder (60pieces)



Use only Datalogic-approved power supply and cables. Use of an alternative power supply will invalidate any approval given to this device and may be dangerous.



Battery

Install the Battery

To install the battery pack, follow the steps below:

1. Unscrew the battery cover and remove it:



Handheld Models



Pistol Grip Models

2. Connect the battery contacts to the battery clip located in the battery slot:



Handheld Models



Pistol Grip Models

3. Insert the battery pack into the slot as shown in the figures below:



Handheld Models



Pistol Grip Models

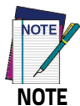
4. Insert the battery cover and fix the screws:



Handheld Models



Pistol Grip Models



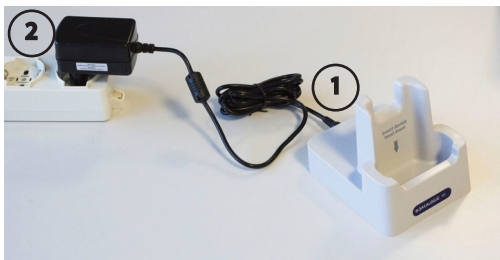
Required torque of the screws is 35 Ncm.

Charge the Battery

The Joya Touch battery pack is not initially fully charged. After installing the battery, charge it with the single slot dock charge only or the 3-slot cradle.

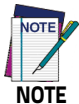
Charge with the Single Slot Dock Charge Only

To prevent the risk of short-circuiting, first plug the power supply into the power jack on the back of the dock, then plug the power supply into a power outlet.



CAUTION

Use only the Datalogic power supply included in the box to power the Joya Touch Single Slot Dock Charge Only.



NOTE

Insert the device into the dock with the screen facing front and the head facing down.

Charge with the 3-Slot Cradle

There are two options to connect the cradle to the power supply: fast charge and standard charge.

Fast Charge

The fast charge connection allows to power one cradle with one power supply.

Plug the power supply cable into the power connector on the back of the cradle, then plug the power supply into the AC/DC plug using a Datalogic power cable.

Please see below an example of how to insert the power supply cable through the wall mounting metal bracket:



High Visibility



High Density

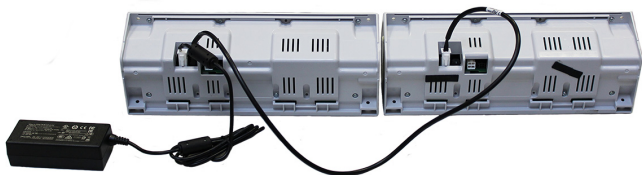
Standard Charge

The standard charge connection allows to power two cradles with one power supply.

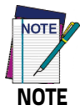
To connect a second cradle use the Joya Touch Cradle Power Jumper, available as optional accessory (P/N 91ACC0049).

1. Connect the first cradle to the second cradle using the power jumper.
2. Connect the power supply to the first cradle.

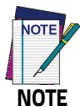
3. Plug the power supply into the AC/DC plug using a Datalogic power cable.

**CAUTION**

Use only the Datalogic power supply 91ACC0048 to power the Joya Touch 3-Slot Cradle.

**NOTE**

Insert the device into the dock with the screen facing front and the head facing down.

**NOTE**

Under the same conditions, the fast charge connection can charge the battery up to twice as fast as the standard charge connection.

**NOTE**

For further information on the Joya Touch 3-Slot Cradle, refer to the Joya Touch 3-Slot Cradle Quick Start Guide, included in the cradle's box, and to the Joya Touch 3-Slot Cradle Installation Guide, downloadable from our website www.datalogic.com.



Do not put any foreign object such as, but not limited to, coins, paper clips, stickers inside the slot of any of the docks (see the examples below).



Battery Information

By default, the main battery pack is disconnected at the factory to avoid damage due to excessive draining.

Rechargeable battery pack is less than half of full charge when delivered.

The battery pack autonomy varies according to many factors, such as the frequency of bar code scanning, RF usage, battery life, storage, environmental conditions, etc.

Close to the limits of the working temperature, some battery performance degradation may occur.

The Joya Touch should be charged at an ambient temperature between 0 - 35° C (32 to 95° F) to achieve the maximum charging rate.

Never charge the device battery in a closed space where excessive heat can build up.

As a safety precaution, the battery may stop charging to avoid overheating.

The Joya Touch gets warm during charging; this is normal and does not mean a malfunction.

Even if the storage temperature range is wider, it is recommended to store the terminal and the batteries at environmental temperature, in order to achieve the longest battery life.



The Joya Touch gets warm during charging. This is normal and does not mean a malfunction.



Avoid storing batteries for long periods in a state of full charge or very low charge.

We recommend charging the battery pack every two to three months to keep its charge at a moderate level to maximize battery life.

Annual replacement of rechargeable battery pack avoids possible risks or abnormalities and ensures maximum performance.



Do not incinerate, disassemble, short terminals, or expose to high temperature. Risk of fire and explosion. Use specified charger only. Risk of explosion if the battery is replaced by an incorrect type. Dispose of batteries as required by local authorities.



Use only Datalogic approved batteries and accessories for battery charging.

Risk of explosion if battery is replaced by an incorrect type.

Dispose of used batteries according to the instructions.

Il y a risque d'explosion si la batterie est remplacée par une batterie de type incorrect.

Mettre au rebut les batteries usagées conformément aux instructions.

Battery Safety Guidelines



Installing, charging and/or any other action should be done by authorized personnel and following this manual.

The battery pack may get hot, explode, ignite, and/or cause serious injury if exposed to abusive conditions.

If the battery pack is replaced with an improper type, there is risk of explosion.

Do not place the battery pack in or near a fire or other heat source; do not place the battery pack in direct sunlight, or use or store the battery pack inside unventilated areas in hot weather; do not place the battery pack in microwave ovens, in clothes dryers, in high pressure containers, on induction cook surfaces or similar devices. Doing so may cause the battery pack to generate heat, explode or ignite. Using the battery pack in this manner may also result in a loss of performance and a shortened life expectancy.

To power the cradle, use only a Datalogic approved power supply. The use of an alternative power supply will void the product warranty, may cause product damage and may cause heat, an explosion, or fire.

The area in which the units are charged should be clear of debris and combustible materials or chemicals.

Do not use the battery pack of this terminal to power devices other than this mobile computer.



WARNING

Immediately discontinue use of the battery pack if, while using, charging or storing the battery pack, the battery pack emits an unusual smell, feels hot, changes color or shape, or appears abnormal in any other way.

Do not short-circuit the battery pack contacts connecting the positive terminal and negative terminal. This might happen, for example, when you carry a spare battery pack in your pocket or purse; accidental short-circuiting can occur when a metallic object such as a coin, clip, or pen causes direct connection of the contacts of the battery pack (these look like metal strips on the battery pack). Short-circuiting the terminals may damage the battery pack or the connecting object.

Do not apply voltages to the battery pack contacts.

Do not pierce the battery pack with nails, strike it with a hammer, step on it or otherwise subject it to strong impacts, pressures, or shocks.

Do not disassemble or modify (i.e. bend, crush or deform) the battery pack. The battery pack contains safety and protection devices, which, if damaged, may cause the battery pack to generate heat, explode or ignite.

In case of leakage of liquid from the battery, avoid contact with liquid the skin or eyes. If the contact occurs, immediately wash the affected area with water and consult a doctor.

Do not solder directly onto the battery pack.

Do not expose the battery pack to liquids.

**WARNING**

Avoid any knocks or excessive vibrations. If the device or the battery is dropped, especially on a hard surface, you should take it to the nearest Authorised Repair Centre for inspection before continuing to use it.

If your device stops working for any reason, do not use its battery on other electronic devices without a prior check and approval by an Authorised Repair Centre.

Do not replace the battery pack when the device is turned on.

Do not remove or damage the battery pack's label.

Do not use the battery pack if it is damaged in any part.

Battery pack usage by children should be supervised.

Collect and recycle waste batteries separately from the device in compliance with European Directive 2006/66/EC, 2011/65, 2002/96/EC and subsequent modifications, with US and China regulatory laws and regulations about the environment.

NOTES

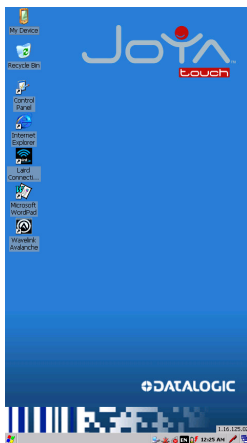


Use and Functioning

The use of the Joya Touch depends on the application software loaded. However, there are several parameters that can be set and utilities that can be used to perform some basic functions such as data capture, communications, file management, etc. Furthermore, Avalanche Enabler is a major utility embedded in the software provided from factory.

Getting Started

The Joya Touch turns on when a charged battery pack is inserted.



The mobile computer goes into power-off (low power with display and keyboard backlight off), when it is no longer used for more than a programmable timeout, which is defined in the POWER applet of the Control Panel. In this mode it can be awakened (resuming operation) pressing the scan key.

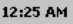





The mobile computer can also be awakened or turned off by the application program.

Taskbar

The Taskbar provides information about the time, the battery level, the keyboard function, and the decoding status.



ICON	DESCRIPTION
Time Icons	
	It displays the time.
Radio Status Icons	
	It indicates if the radio is connected or not with an Access Point.
Network Status Icons	
	It displays whether you are connected or not to Wi-Fi or Bluetooth Personal Area Network.
	ActiveSync connection icon is displayed when connected to ActiveSync or Windows Mobile Device Center either by USB or Bluetooth. Double-tap it to open a status dialog that will let you disconnect the ActiveSync session without physically disconnecting the device from the PC. It is the only way to disconnect a Bluetooth ActiveSync connection.

Touch Gestures

Double Tap	Touch the screen twice to open items and select options.
Drag	Touch and slide your finger on screen to select text and images. Drag in a list to select multiple items.
Tap-and-hold	Tap and hold your finger on an item to see a list of actions available for that item. On the pop-up menu that appears, tap the action you want to perform.



To prevent damage to the screen, do not use sharp devices or any device other than your finger or a touch screen stylus.

In harsh applications, use of screen protectors should be taken into consideration, in order to extend the touch screen operating life.

Do not apply not necessary high pressures on the screen.

For applications where an intensive use of the touch screen is foreseen, please consider that touch screen components are subject to progressive wear.

Data Capture

To capture data, first of all double-tap **Control Panel > Decoding** and open the applet.



Imager Data Capture

The imager uses digital camera technology to take a digital picture of a bar code, the image is stored in memory and software decoding algorithms are executed to extract the data from the image. The omnidirectional scanning does not require that the operator orient the bar code to align with the scan pattern.

To scan a bar code symbol:

1. Point the scan window at the bar code.

2. Press the scan key. The imager projects a laser aiming pattern similar to those used on cameras. The aiming pattern is used to position the bar code or object within the field of view.



3. Center the symbol in any orientation within the aiming pattern. Ensure the entire symbol is within the rectangular area formed by the brackets in the aiming pattern, then either wait for the timeout or release the scan key to capture the image. A red beam illuminates the symbol, which is captured and decoded.

Linear Bar Code



2D Matrix Symbol



If the scan has been successful:

- If enabled, the good read beep plays.
- If enabled, the GreenSpot projects a green spot onto the bar code image.
- If enabled, a pop-up window will report the data and the symbology of the scanned bar code (See ‘[Data Capture Configuration](#)’ on page -34).

The field of view changes its size as you move the reader closer or farther away from the bar code. The aiming pattern is smaller when the imager is closer to the bar code and larger when it is farther from the bar codebar code.

Scan symbols with smaller bars or elements (mil size) closer to the unit and those with larger bars or elements (mil size) farther from the unit. Hold the Joya Touch between two and nine inches (depending on symbol density) from the symbol, centering the aiming pattern cross hairs on the symbol.

Resetting the Joya Touch

There are three reset methods for the Joya Touch.

A "warm boot" terminates an unresponsive application and clears the working RAM, but preserves both the file system and the registry.

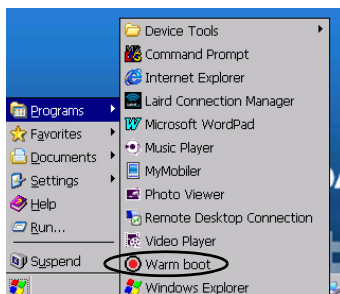
A "cold boot" forces all applications to close and clears working RAM and files not resident on the persistent flash memory. Registry is restored from persistent memory if available or returned to factory default.

A "clean boot" restore the Joya Touch to factory default.

Warm Boot

A warm boot terminates an unresponsive application and clears the working RAM, but preserves the file system and registry. If an application "hangs" initiate a warm boot to terminate the application.

To perform a warm boot, tap **Start > Programs > Warm Boot**:



Cold Boot

A cold boot is a complete reset of the Joya Touch in which all applications are forcibly closed and RAM is completely cleared. Registry is restored from persistent memory if a saved copy is available (see [Persistent Registry on page 54](#)) and RAM file system completely erased. You will lose any applications and data (registry too) which are not stored in persistent flash memory.

A cold boot is necessary when the Windows Embedded Compact 7 operating system locks up and the warm boot command does not work.

To perform a cold boot, lightly press the cold boot button with a metallic clip for 10 seconds.



Clean Boot

A clean boot is a complete restore to factory default and backup folder content erase of the Joya Touch. You will lose any applications and data (registry too).

To perform a clean boot first execute a cold boot while keeping pressed the scan key.

A pop-up will ask you to confirm, confirm by pressing and releasing the scan key for three times, or wait for 3 seconds to cancel.

**NOTE**

Clean boot may require a considerable amount of time, even a few minutes.

	Warm Boot	Cool Boot	Clean Boot
Registry	Preserved	Restored from the latest persistent copy (from flash)	Reinitialized
Flash Disk (Backup Folder)	Preserved	Preserved	Cleared
Object Store (RAM Disk)	Preserved	Reinitialized, some persistent files could be restored (from flash)	Reinitialized
Storage Card (if present)	Preserved	Preserved	Preserved

**CAUTION**

Before performing a reset, it is recommended to:

- **Execute a system backup to keep your more important files and applications persistent.**
- **Save the registry to non-volatile memory to guarantee the persistence of the Windows configuration.**

Control Panel

From the home screen, double-tap **My Device** icon or tap **Start** > **Settings** and then double-tap **Control Panel** icon to open the control panel main window.



Data Capture Configuration

From the control panel main window, double tap the **Decoding** icon:

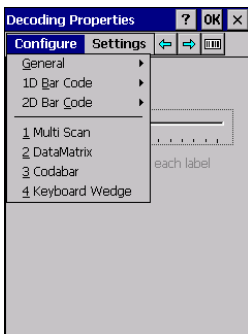


There are two sections in the Decoding control panel, each containing additional pages. There are eight general configuration pages and multiple bar code symbology pages.

Configure

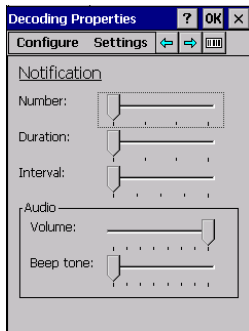
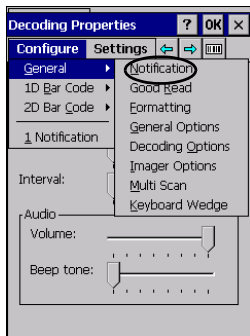
Select the desired configuration from the options shown in the figure below, and the other **Decoding Properties** figures on the following pages.

Select General, 1D or 2D Bar Code, then use the menu or tap the left and right arrow keys to navigate the different pages of the Decoding utility. The menu options will change to reflect the items most recently selected.



Notification

From the **Decoding Properties** page, tap **Configure** > **General** > **Notification**. Use to configure the good read green spot, tone and vibration notification.



Number

Sets the number of notifications (green spot, beep or vibration) the scanner emits on a good read.

Duration

Sets the duration of the notification (green spot, beep or vibration) the scanner emits on a good read.

Interval

Sets the interval between each notification (green spot, beep or vibration) the scanner emits on a good read.

Volume

Sets the volume of beep tone.

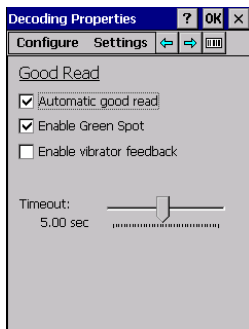
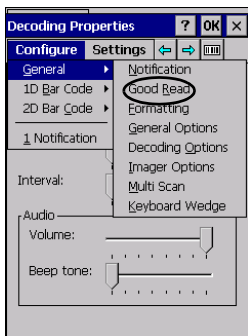
Beep Tone

Sets the type of beep tone.

Good Read

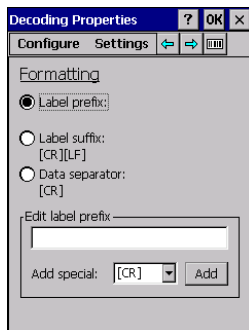
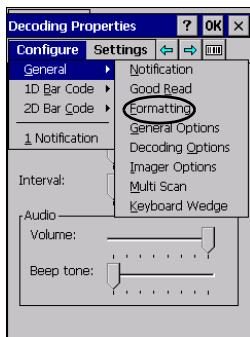
From the **Decoding Properties** page, tap **Configure > General > Good Read**. Use it to enable good read notifications (green spot, vibrator) and to set the decoding timeout for decoding labels.

Select **Automatic good read** to enable/disable notifications (main enabler), then select the notification you want to use.



Formatting

From the **Decoding Properties** page, tap **Configure** > **General** > **Formatting**. Allows to format the bar code text by enabling and configuring the use of prefix, suffix and data separator.



Label Prefix

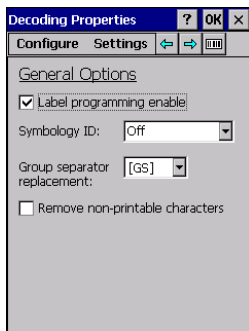
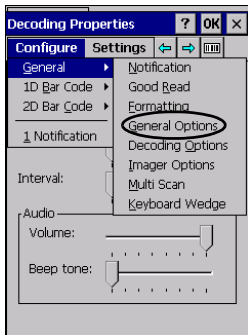
Select **Label prefix** to enter the characters you will be using as prefix. Scroll the **Add special** dropdown menu to select a special character to be added in the current cursor position.

Label Suffix

Select **Label suffix** to enter the characters you will be using as suffix. Scroll the **Add special** dropdown menu to select a special character to be added in the current cursor position.

General Options

From the **Decoding Properties** page, tap **Configure** > **General** > **General Options**.



Label Programming Enable

Parameter reserved to Datalogic personnel.

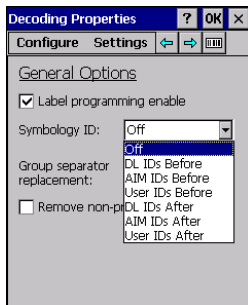
Symbology ID

Scroll the Symbology ID dropdown menu to add a code identifier prefix or suffix to the bar code string.

The AIM ID (Association for Automatic Identification and Mobility) is an international bar code identifier. When **AIM IDs Before** is enabled, the AIM ID is inserted at the beginning of the decoded bar code.

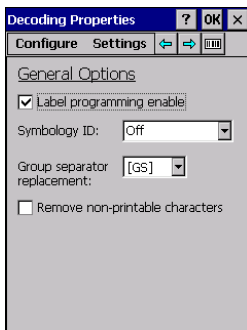
DL IDs is a Datalogic specific character identifier.

User IDs is a user specific character identifier you can set in the related symbology settings menu.



Group Separator Replacement

The group separator replacement is a non printable data separator character (ASCII code 1D hex). Use the **Group separator replacement** to select a special character that will be used as GS data separator substituting the standard GS character.

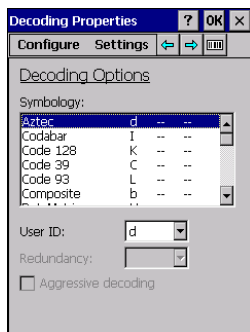
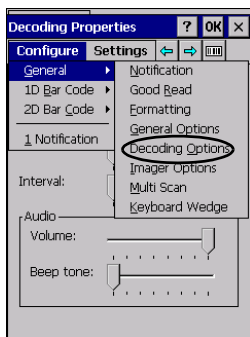


Remove Non-printable Characters

Select it to remove non-printable characters from a unicode string.

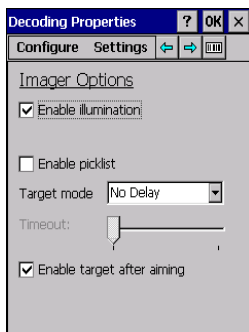
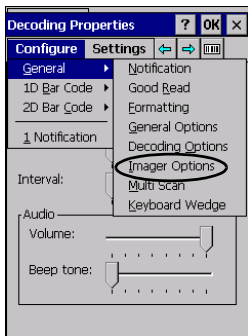
Decoding Options

From the **Decoding Properties** page, tap **Configure** > **General** > **Decoding Options**. Use it to configure the User ID for symbologies, Redundancy and Aggressive Decoding (if supported by the decoding module). Select a symbology to view or change the available properties settings.



Imager Options

From the **Decoding Properties** page, tap **Configure** > **General** > **Imager Options**. Use it to customize the Joya Touch scanning behavior.



Enable Illumination

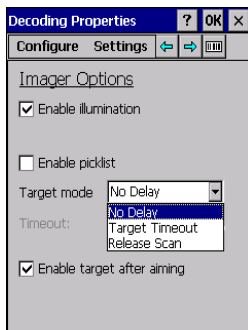
If selected, it causes the scanner to turn on the illumination to aid decoding.

Enable Picklist

If selected, it allows you to pick and decode a bar code from multiple bar codes printed close together, when the scan illumination intersects more than one bar code. Only the targeted bar code will be returned.

Target Mode

If enabled, when the scan button is pressed, the scanner will project an aiming pattern to assist in centering over the bar code before scanning. Scroll the **Target mode** dropdown menu to select the desired targeting behavior:

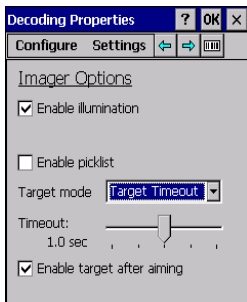


No Delay

Target mode is disabled.

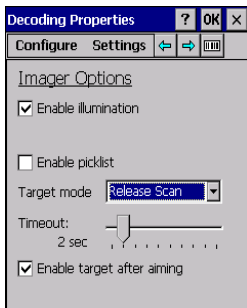
Target Timeout

If selected, scanning takes place after a programmable time upon pressing the scan button. Drag the **Timeout** slider to set the maximum amount of time the scanner attempt to decode after target timeout:



Release Scan

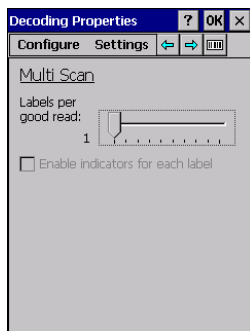
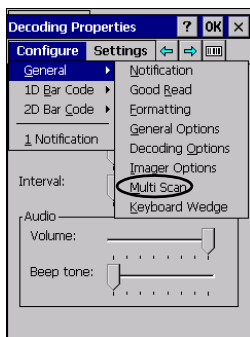
If selected, scanning takes place after the scan button is released. Drag the **Timeout** slider to set the scanning timeout after releasing the scan button:



Multi Scan

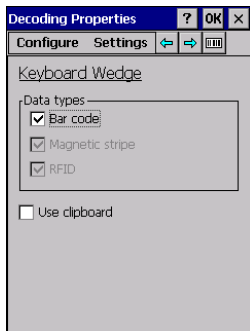
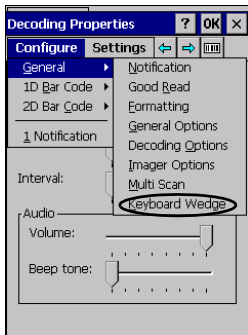
The Joya Touch scanner allows you to scan multiple bar codes by one scan. From the **Decoding Properties** page, tap **Configure > General > Multi Scan** and drag the **Labels per good read** slider to set the number of bar codes allowed to be read per scan.

Select **Enable indicators for each label** to enable notifications for each bar code that is scanned.



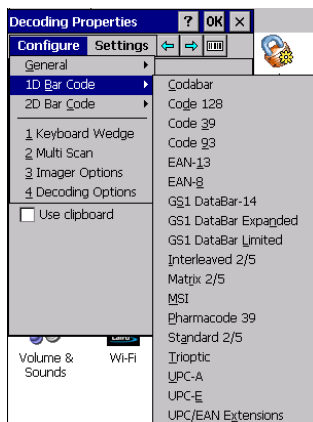
Keyboard Wedge

From the **Decoding Properties** page, tap **Configure** > **General** > **Keyboard Wedge**. Select **Bar code** to enable the wedge mode.

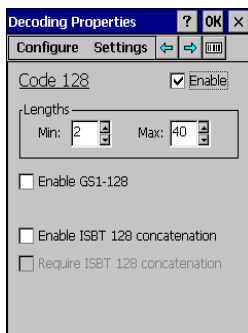


1D Bar Code Symbology Pages

Each bar code symbology can be customized with additional settings that may affect that specific bar code decoding. Scroll the drop-down menus from **Configure > 1D Bar Code**, or tap the left and right arrow keys to navigate the 1D bar code symbology pages and configure symbology decoding options:

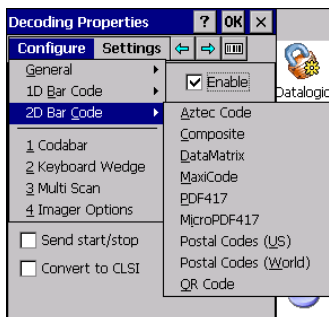


Refer to the sample symbology control panels for examples of the types of fields and options you can modify. The sample below shows the settings of a Code 128 bar code symbology:

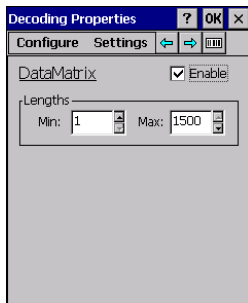


2D Bar Code Symbology Pages

Scroll the drop-down menus from **Configure > 2D Bar Code**, or tap the left and right arrow keys to navigate the 1D bar code symbology pages and configure symbology decoding options:



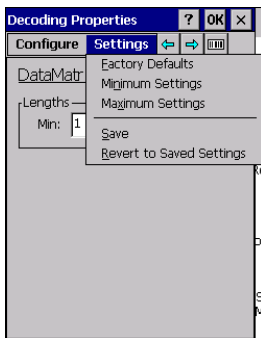
Refer to the sample symbology control panels for examples of the types of fields and options you can modify. The sample below shows the settings of a DataMatrix bar code symbology:



Decoding Settings

Select from the Decoding Properties Settings menu to restore previous configurations and/or other available default settings. Choose from:

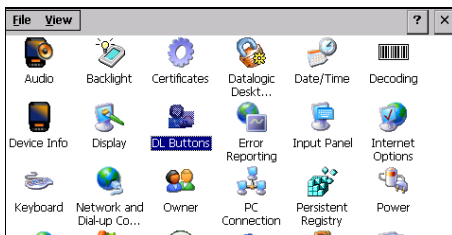
- Factory Defaults
- Minimum Settings
- Maximum Settings
- Save
- Revert to Saved Settings



The settings are saved when you tap 'Yes'. To permanently save these settings you need to save the registry using the Persistent Registry applet in the Control Panel. When open, Decoding Properties acts as a simple bar code test tool that provides the Data decoded and the Data Type of the bar code scanned.

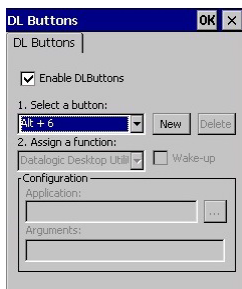
DL Buttons

You can use the **DL Buttons** tab to associate specific keys with specific applications. From the control panel main window, double tap the **DL Buttons** icon. As for the Joya Touch, it is possible to program the scan key and the Trigger, if present.



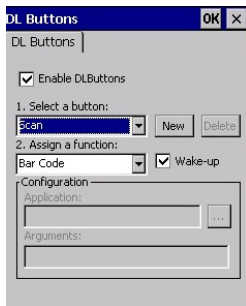
On the **DL Buttons** tab, customize the program hardware buttons to launch your most used applications. Under **Select a button**, select the button you want to assign a function to, and then select a program from **Assign a function**.

Tap **OK** to confirm.



Triggers

Triggers are special customizable buttons that are mapped by default by DL Buttons. Also, they can be set as wakeup buttons:



TRIGGERS	AVAILABLE FUNCTIONS
Scan	Bar Code function activates the scanner.
Pistol Trigger	

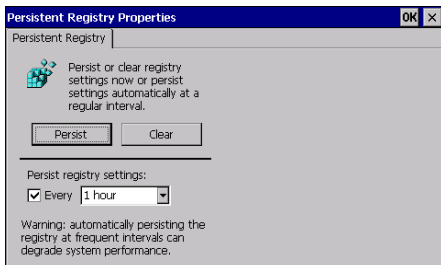
Persistent Registry

The Registry stores information that are necessary to configure the system for applications and hardware devices. The Registry also contains information that the operating system continually references to during operation. To persist the Registry settings between boots, do the following steps:

1. Double-tap the **Control Panel** icon on the home screen.
2. Double-tap the **Persistent Registry** icon.

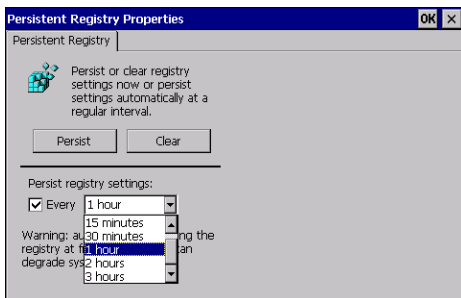


3. Tap the **Persist** button.
4. Tap **OK** to exit.



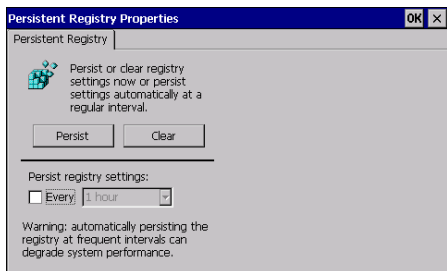
To change Persistent Registry timing, do the following steps:

1. Select a time interval from the menu.
2. Tap **OK** to save and exit.



To deselect Persistent Registry timing, do the following steps:

1. Deselect the **Persist registry settings** check box.
2. Tap **OK** to save and exit.



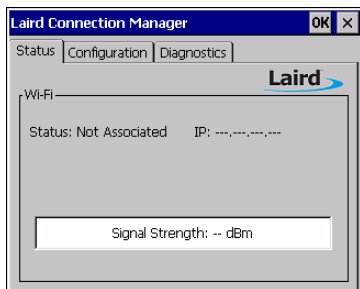
Wireless Communications

Wireless networking has a customized control, Laird Connection Manager (LCM), specific to the radio. LCM allows you to view all radio and security settings, and status. It also enables you to troubleshoot connectivity issues.

To access LCM, double-tap the **Laird Connection Manager** icon on the home screen, or tap **Start > Programs > Laird Connection Manager**.

Status Tab

The **Status** tab provides status information on the radio's Wi-Fi connection between the client device and the access point to which it's associated.



Status

Indicates the current status of the Laird Wi-Fi radio. Connection statuses include:

- **Down**

The radio is not recognized by Laird software and therefore is not associated or authenticated.

- **Disabled**

The radio is disabled. To enable the radio, check the Wi-Fi check box located on the Configuration window. When the radio is disabled, it does not attempt to make a connection to an access point.

- **Not Associated**

The radio has not established a connection to an access point.

- **Associated**

The radio has established a connection to an access point but is not EAP authenticated. The radio cannot communicate unless it is associated and EAP authenticated.



If the Encryption type is set to WEP or Open (None), it can communicate (send data) while in the Associated state.

- **Connected to [SSID]**

The radio is connected to the named SSID.

IP Address

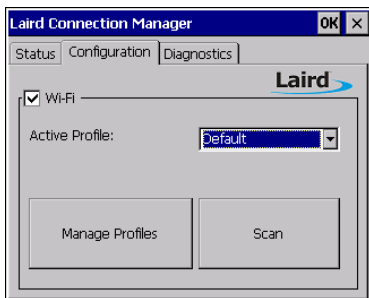
Displays the IP address of the Wi-Fi device.

Signal Strength

Displays the signal strength (or RSSI) in dBm.

Configuration Tab

The Configuration tab allows Wi-Fi to be enabled and disabled. It also allows users to manage and scan for Wi-Fi profiles.



Check on/off box

Check to enable or disable Wi-Fi

Active Profile

Displays the name of the active profile. Use the drop-down menu to select a different profile.

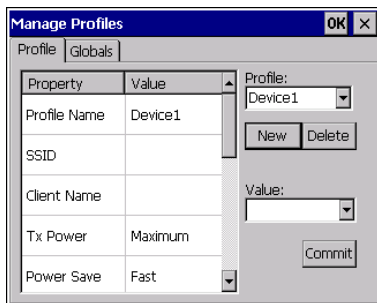
Profiles

Allows user to change profiles and global configurations, and enables administrative abilities.

There are two tabs listed under Manage Profiles:

- **Wi-Fi - Profile**

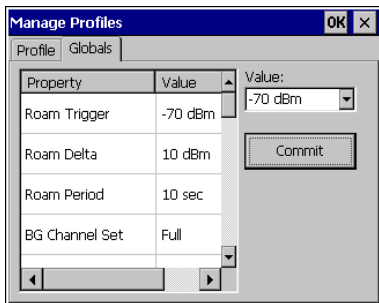
Profile settings are radio and security settings that are stored for each configuration profile. The Profile tab displays the following properties and options:



- **Property and Value table:** displays the properties of each profile and its respective value.
- **Profile drop-down menu:** displays the current profile and a list of all profiles previously configured or used.
- **New:** allows a profile to be added to the list.
- **Delete:** deletes a profile from the list.
- **Value box:** displays the value of a prospective property.
- **Commit:** saves the changed value.

■ Wi-Fi - Globals

The Globals tab displays the source device's Wi-Fi global values that apply to all profiles and settings that apply to LCM itself. The following subsections allow these values to be modified:



- **Property and Value table:** displays various properties and their respective values.
- **Value box:** displays the current and available alternative values for the selected property.
- **Commit:** saves the changed value.

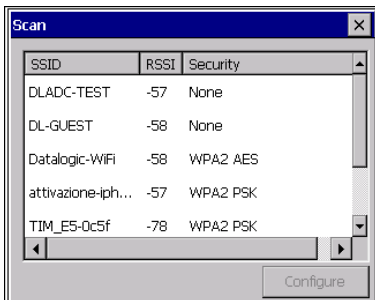


NOTE

When you tap Commit, a registry flush occurs for all settings.

Scan

Opens the scan window to scan the area for available SSIDs. Also displays RSSI and security.



Diagnostics Tab

The Diagnostics tab enables you to troubleshoot connection issues within LCM.

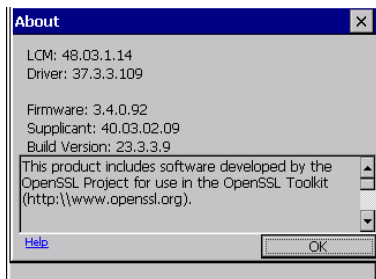


Wi-Fi

Status enabled/disabled

About

Tap to display LCM information including driver and the LCM version.

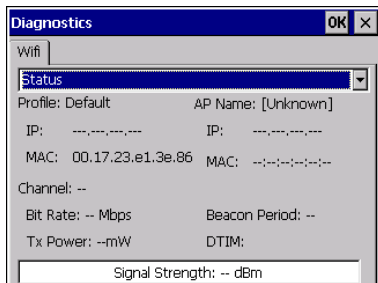


Advanced

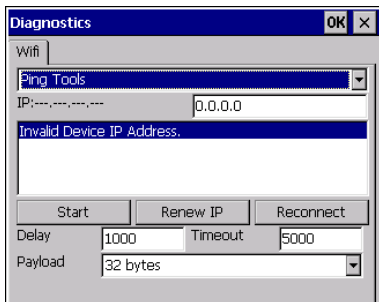
Tap to display advanced settings for Wi-Fi, strength percentage, and quality percentage.

There are three drop-down options:

- **Status**



- **Ping Tools**



- **Utilities**



Audio Settings

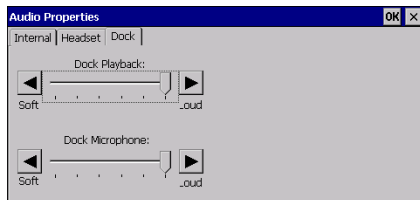
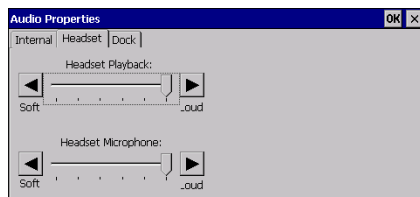
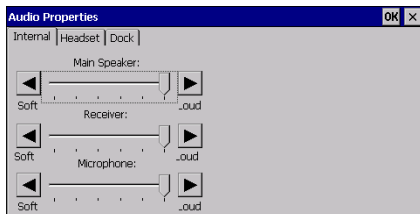
There are two applets that control volume: Audio and Volume & Sounds.

Audio

From the control panel main window, double-tap the **Audio** icon:

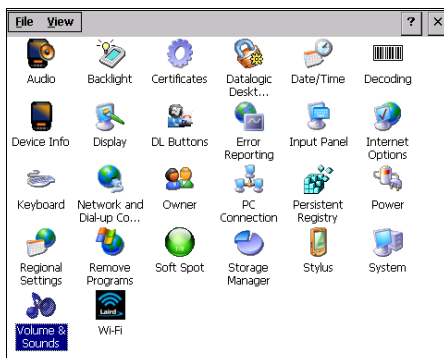


The audio control panel can be used to independently set the playback or recording volume for different types of audio inputs and outputs, such as a headset, powered mobile dock, or the internal speakers and microphone.



Volume & Sounds

From the control panel main window, select the Volume & Sounds applet by double tapping the **Volume & Sounds** icon:



The **Volume & Sounds** applet configures audio features of all speakers and headphones and appears as follows:



Connecting to other Computers

Windows Mobile® Device Center

The desktop application Windows Mobile® Device Center gives you the ability to synchronize information between a desktop computer and your Joya Touch.

Synchronization compares the data on the Joya Touch with that on the desktop computer and updates both with the most recent information.

Windows Mobile Device Center is only compatible with Windows Vista and Windows 7; if you run Windows XP or earlier, you have to download Microsoft ActiveSync.

To establish a partnership between the Joya Touch and a host PC, start Windows Mobile® Device Center and follow the steps below:

1. Connect the Joya Touch to the host PC. Windows Mobile® Device Center configures itself and then opens.
2. On the license agreement screen, click **Accept**.
3. On the Windows Mobile Device Center's home screen, click **Set up your device**.
4. Select the information types that you want to synchronize, then click **Next**.
5. Enter a device name and click **Set Up**.

Datalogic Firmware Utility

The Datalogic devices are equipped with a field upgradeable firmware mechanism.

Firmware updates are available on the Datalogic website:

<http://www.datalogic.com/eng/support-services/automatic-datacapture/downloads/software-utilities-sw-2.html>.

After you have downloaded the desired update, there are several ways you can update the firmware on your device.

- Use Wavelink Avalanche™ if you have multiple Datalogic devices to update. For more information refer to the dedicated section of the Wavelink website.
- If Wavelink Avalanche™ is not available or you have only a few Datalogic devices to update, use the Datalogic Firmware Utility (DFU), described below, to install or update the firmware using an ActiveSync connection.

The following sections provide procedures for the retrieval and installation of the most current firmware image onto a Datalogic device.

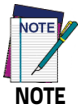
Retrieving a Firmware Image Update

The following instructions use Internet Explorer to retrieve the most current firmware image.

1. Launch Internet Explorer on your PC and navigate to the Datalogic website.
2. Navigate to the Downloads section of the website.
3. Using the device selection fields, select the file you want to download, then click **Save** to begin copying the files to your local machine (or local network location).

Installing DFU on the Host PC

The Datalogic Firmware Utility (DFU) provides administrators with a field upgrade mechanism. You must have Microsoft® ActiveSync (for Windows XP devices) or Windows Mobile® Device Center (for Windows 7 and Vista devices) already loaded and running on the host PC to use DFU. See 'Windows Mobile® Device Center' on page -67 for more information.



Prior to installing, you must remove any previous versions of DFU installed on the host PC.

To install the Datalogic Firmware Utility, complete the following steps on the PC:

1. Go to the Datalogic website and download the most current version of the Datalogic Firmware Utility. Unzip the file, then double-click to run **DFU_Setup.exe**.
2. Click **OK** to continue once you have removed previous versions of DFU.
3. The Welcome to DFU Setup Program screen opens.
 - Please exit all Windows applications before running this installer.
 - Click **Next** to continue the Setup.
4. Follow the onscreen instructions to complete the installation.

Updating the Firmware

After copying the firmware image to the host PC and installing DFU, you can upgrade the firmware on your Datalogic device.



NOTE

The following steps require that you have already established an ActiveSync or Windows Mobile® Device Center connection between the host computer and the Datalogic device.

1. Go to **Start > Programs > Datalogic > DFU > Datalogic Firmware Utility**.
2. Verify that ActiveSync is selected by clicking **Communications > WMDC/ActiveSync**.
3. Click **browse (...)** and navigate to the location where you saved the firmware file for your terminal.
4. Select the current *.out file and click **Open**.
5. Click **Update**.
6. DFU will compare the selected firmware image with the firmware already loaded on the device; if the image is compatible with the connected device, DFU will proceed to update the firmware image on your device.

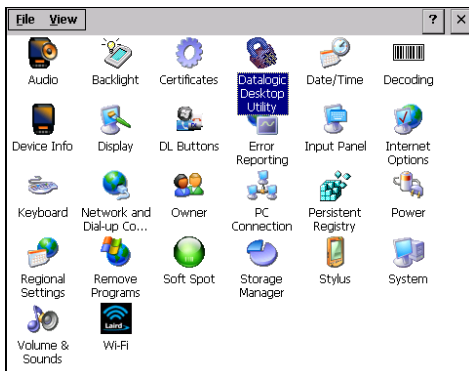
After the firmware of your device has been updated, the program will automatically perform a warm reset of the device.

Datalogic Desktop Utility

Datalogic Desktop Utility (DDU) allows administrators to configure Windows® CE and Embedded Handheld devices to control individual user access. This includes the ability to:

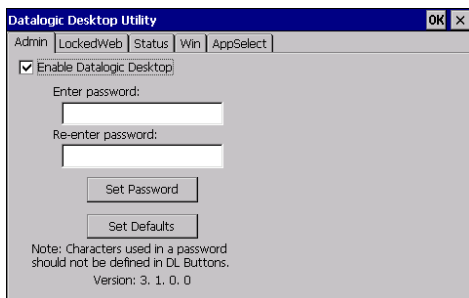
- Prevent users from changing your device OS settings.
- Use Application Selector to replace the desktop with a selection of authorized applications.
- Restrict user access in Internet Explorer (and customized error recovery mechanisms).

To open DDU, access the **Control Panel** and double-tap the **Datalogic Desktop Utility** icon.



Administrative Options (Admin tab)

When you open the DDU control panel, the **Admin** tab appears.



COMMAND	DESCRIPTION
Enable Datalogic Desktop	Tap this checkbox to activate the DDU functions such as Windows Access Restrictions and Application Selector.
Enter Password	Enter a password in the text box. This allows the user to specify a password when this utility is launched. By default the password is "blank". A password can consist of all standard keyboard characters.
Re-Enter Password	Carefully re-enter the password in the second text box.
Set Password	Tap Set Password to enable the password. To change or remove the password, enter a new value, re-enter the new value, and tap Set Password .
Set Defaults	Tap Set Defaults to reset the default values of all the functions on all the tabs. After you select this option, you will receive a prompt to verify this selection.

Setting a Password

To set a password:

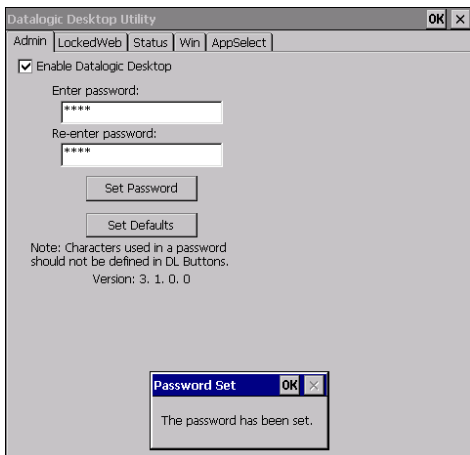
1. Enter a password in the field using the virtual keyboard. This allows the user to specify a password when this utility is launched. By default the password is "blank".



NOTE

Be sure to record the password for future reference.

2. Re-enter the password in the second field.
3. Tap **Set Password** to enable the password.
4. Tap **OK** to close the **Set Password Confirmation** dialog.





NOTE

You must tap Set Password prior to exiting DDU in order to store and activate your new password. It is not necessary to select Enable Datalogic Desktop.



CAUTION

If you tap Set Defaults it will remove all custom settings and restore all the factory default settings, except a previously set password.

Changing a Password

To change to a new password:

1. Enter a new value in the **Enter Password** field.
2. Re-enter the new value in the **Re-enter Password** field.
3. Tap **Set Password**.

Removing a Password

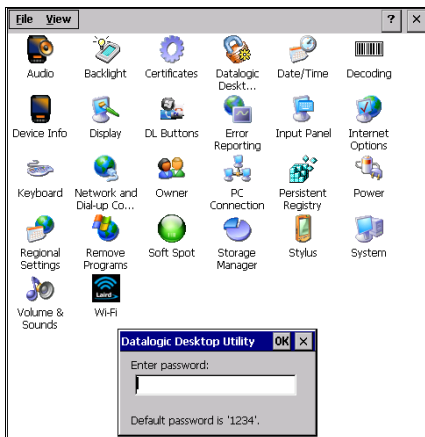
To remove a password:

1. Enter blanks in both **Password** fields.
2. Tap **Set Password**.

Password Request Dialog Box

Once the password is set, next time you open the **Datalogic Desktop Utility**, the DDU Password dialog box opens.

This dialog box will only open if a password was defined:



1. Type in your password using either the keypad on the unit, or using the stylus on the soft input panel (SIP). If you enter an incorrect password, the system will prompt you to input the correct one.
2. Select/tap **OK** to verify the password. Or tap **X** to cancel.

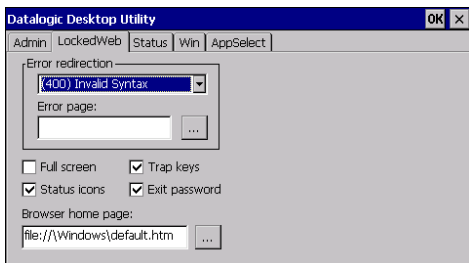
Locked Web Browser Options (LockedWeb tab)

Tap the **LockedWeb** tab to access the Locked Web Browser Configuration.

For additional information about Locked Web Browser commands and metatags, see [Locked Web Browser on page 85](#).

Error Page Redirection

Use the Error Redirection option to provide customized recovery from common errors. When an error occurs, the browser can redirect access to a specified error page with instructions on how to recover from the problem.



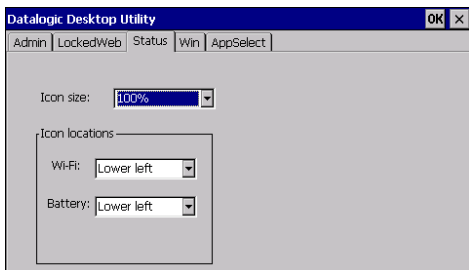
Error Redirection Options

Error Type	The 'Error Type' pull-down list displays available Error Types: (400) Invalid Syntax, (403) Request Forbidden, (404) Object Not Found, (406) No Response Format, (410) Page Doesn't Exist, (500) Internal Server Error, (501) Server Can't Do That, Generic Error, Network Disconnected.
Error Page	Edit this textbox to associate a website or html file with the specified error.

Other Options	
Full Screen	Set the web browser in full screen mode.
Status Icon	Enable or disable the status icons view. The status icons can be configured on the Status tab of DDU.
Trap Keys	<p>When checked:</p> <ul style="list-style-type: none"> ▪ all key presses will be trapped by the Locked Web Browser to prevent the user from accessing unsafe parts of the system. For example, pressing Ctrl+O to Open a File will not work; ▪ safe key presses (e.g. Alpha numeric) will still get processed by the Locked Web Browser as normal. For example entering a number in a text field on a web page; ▪ DL Buttons keys will not work in the LockedWeb Browser; ▪ all Locked Web Browser command keys will work (e.g. Ctrl+O to exit). <p>When unchecked:</p> <ul style="list-style-type: none"> ▪ all keys will be processed normally by the system and the browser; ▪ DL Buttons keys will work normally; ▪ all Locked Web Browser command keys will work (e.g. Ctrl+O to exit).
Other Options	
Exit Password	When checked, a password will be required before the Locked Web Browser can exit. This password is different than the DDU exit password, with a default value of '0000'.
Browser Home Page	This sets the Internet Explorer home page, regardless of the enable state of the Locked Web Browser.

Status Icons Options (Status Tab)

Tap the **Status** tab to access the Status Icons option. You can configure the view of some status icons that are used in **LockedWeb** and in **Application Selector** to display the status of Wi-Fi radio and battery.

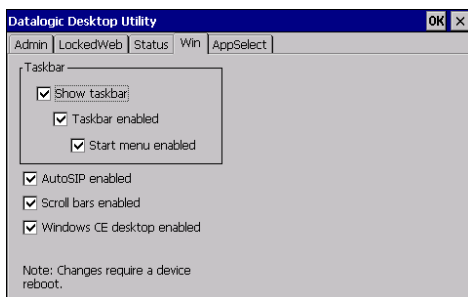


Status Icons Options	
Icon Size	Sets the status icons' size.
Icon Location	Selects the preferred location for each status icon.

Windows Control

Select/tap the **Win** (Windows Controls) tab to access the Windows Controls option. Use Windows controls to allow or restrict access to Windows system functions.

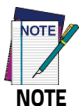
You can disable normal Windows functions such as the taskbar, leaving nothing but a blank workspace. This allows applications to be run in full screen mode and prevents users from accidental or unauthorized use of the taskbar, Internet Explorer, and any other resident applications.



Windows Controls	
Show Taskbar	Tap Show Taskbar to specify whether the Taskbar is displayed or not.
Taskbar Enabled	Tap Taskbar Enabled to specify whether the taskbar is accessible. This option is only available when the Show Taskbar is checked.
Start Menu Enabled	Tap Start Menu Enabled to specify whether the Start Menu is displayed or not. This option works only when Task Bar Enabled is checked.
AutoSIP Enabled	Enables the AutoSIP Windows feature.

Windows Controls

Scroll Bars Enabled	This control only takes effect in Locked Web Browser. When checked, displays horizontal and vertical scroll bars to help view large web pages which do not fit the screen. When unchecked, scroll bars will not be present.
Widows CE Desktop Enabled	When selected, CE Desktop is disabled, so application icons can't be activated.

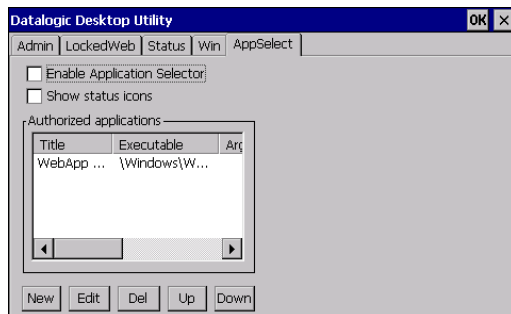


Changes require a device reboot.

NOTE

AppSelector Options (AppSelect tab)

Tap the Application Selector (**AppSelect** Tab) to edit, add, or delete applications for the application selector.



Application Selector Options

Enable Application Selector	Tap Enable Application Selector to enable/disable the application selector. When enabled, the Application Selector replaces the desktop and allows only authorized use of applications.
Show status icons	Enable or disable the status icons view. The status icons can be configured on the Status tab of DDU.
Authorized Applications	This is a list of applications that the user can access.

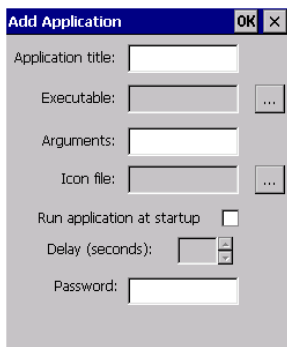
Application Selector Commands

New	Tap New to create a new application entry.
Edit	Tap Edit to edit the selected entry.
Del	This is a list of applications that the user can access.
Up/Down	Tap Del to delete the selected entry.

Add Applications

The **Add Application** dialog opens when you tap either **New** or **Edit**. From the **Add Application** dialog the administrator can configure and/or add/change a new application entry in the list.

Applications with the **Run Application at Startup** option enabled will start automatically when the Application Selector starts up.



COMMAND	DESCRIPTION
Application Title	Type the name of the application in this textbox in the way you wish it to appear for the user.
Executable	Displays the path for the executable file which you want to run.
Browse	Browse for the desired executable file. The results of this search are placed in the Executable textbox.
Arguments	Type any command line arguments to be used when an application is executed.

COMMAND	DESCRIPTION
Icon File	Tap Set Defaults to reset the default values of all the functions on all the tabs. After you select this option, you will receive a prompt to verify this selection.
Browse	Browse for the desired icon file. The results of this search are placed in the Icon File textbox.
Run Application at Startup	Tap this box to force this application to auto start when the Application Selector starts up. Applications will be started in the order listed in the authorized application list.
Delay	Enter a delay duration in seconds in the combo box. This option delays auto start of application(s) to allow drivers to load prior to starting applications.
OK	Tap OK to add/save changes.
X	X Select/tap X to cancel the creation of this entry.

Locked Web Browser

The Locked Web Browser is a browser helper object for Internet Explorer. It allows an administrator to define a restricted internet usage environment. Once in the restricted environment, a password is required to exit. This means users can only access web applications and websites set by the administrator.

To launch the application, go to \Windows\WebAppLock.exe.



NOTE

Configuration is set up through the DDU control panel. See [Locked Web Browser Options \(LockedWeb tab\)](#) on page 77 for more information.

In Full Screen mode, status icons may be used to display signal strength and battery state. For CE, a non-full screen mode exists that allows the status bar to be displayed but with user interaction disabled.

The following command line arguments are supported:

- /E optional parameter which allows for Exit without entering a password
- @URL optional parameter which specifies a URL to use as a home page.
- /C optional parameter which disables the ctrl keys (including the one to exit).

FlashDisk Directory File Management

All of the Windows Embedded Compact 7 system files reside in RAM (volatile memory) except for the FlashDisk directory, which resides in FLASH (non-volatile memory).

Therefore the contents of the FlashDisk directory are persistent even if the mobile computer is rebooted or the battery pack is changed. You can save your more important files that you don't want to lose due to mobile computer reboot, in the FlashDisk directory or create a sub-directory within FlashDisk.

Even though the Windows Directory resides in RAM, it often contains files or sub-directories created by the user or by installation programs that you don't want to lose at re-boot. To keep these files persistent it is necessary to copy them to the directory `\FlashDisk\Windows`.

This directory doesn't exist originally (only FlashDisk exists), and therefore it must be created. At the next cold boot, before activating the shell, Windows Embedded Compact 7 will copy the contents including all sub-directories of `\FlashDisk\Windows` to `\Windows`. Likewise, to maintain files that must be run at Windows Embedded Compact 7 startup, (i.e. `.exe`, `.lnk`, `.vb`, `.htm`, etc.), it is necessary to copy them to the directory `\FlashDisk\Startup`.

This directory does not exist originally (only FlashDisk exists), and therefore it must be created. The applications programs will be run after any type of re-boot (both software and cold boot).

However, since file system persistence is performed after the "`\FlashDisk\Startup`" folder execution, for those programs which depends upon the DLLs and resources copied from "`\FlashDisk\Windows`" to "`\Windows`" during the cold-boot, the "`\FlashDisk\Windows\dl_startup`" folder is to be preferred to execute programs and applications, since the execution follows the

file system restore (and no DLL and resource dependence failure will occur).

As an alternative to the Safe Setup function, it is possible to copy the .cab files to the directory \FlashDisk\Cabfiles (the Cabfiles sub-directory doesn't exist originally and must therefore be created) and perform a mobile computer cold boot to have the application installed.

Once these files are copied to the directory \FlashDisk\Cabfiles, the application will be run after each re-boot. From the second cold boot on, a message may be displayed such as "<application name> is already installed. Reinstall?".

This message blocks the boot process. Press the [Enter] key to continue the system initialization. In a specific Joya Touch version, a 4GB DS type card is available as permanent general purposes storage device (path = \Storage Card).

NOTES

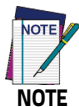


Connections

USB Connection

USB Direct Connection

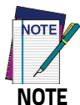
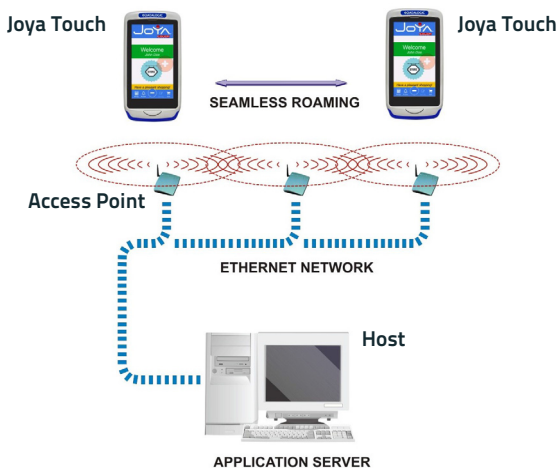
You can use any standard micro USB cable to directly connect the Datalogic Joya Touch to a host computer to transfer data through the USB interface.



Connection through the cable complies to USB 2.0 standard.

Wi-Fi Connection

The Joya Touch Wi-Fi 802.11 a/b/g/n radio models can communicate with the host using the on-board radio frequency component and an Access Point connected to the host computer. To launch this utility you can tap the specific icon if it's visible on the taskbar or you can open Connections folder or Control Panel from desktop.



Wi-Fi module is on by default, in order to avoid wasting energy, you can switch it off using the Wireless Communications applet.

**NOTE**

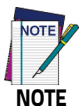
Suspending the terminal powers off the 802.11 a/b/g/n radio and drops the radio connection. When the terminal resumes, depending on the radio power mode and security protocol selected, it may take up to 30 seconds for the 802.11 a/b/g/n radio driver to re-associate the radio to the network.

**NOTE**

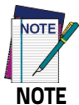
Area coverage and radio performance may vary, due to environmental conditions, access point types or interference caused by other devices (microwave ovens, radio transmitters, etc.).

Bluetooth® Serial Connection

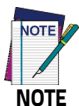
Joya Touch models can communicate with a Bluetooth® printer, using the on-board Bluetooth® module.



Bluetooth® is only available in Joya Touch plus models.



In order to extend battery life, the Bluetooth® module is off by default. If you need to have Bluetooth® working, the module must be powered on.



Suspending the terminal powers off the Bluetooth® radio and drops the Bluetooth® connection. When the terminal resumes, it takes approximately 10 seconds for the Bluetooth® radio driver to re-initialize the radio.

**NOTE**

Area coverage and Bluetooth® radio performance may vary, due to environmental conditions or interference caused by other devices (microwave ovens, radio transmitters, etc.).

Wireless and Radio Frequencies Warnings



WARNING

Use only the supplied or an approved replacement antenna. Unauthorized antennas, modifications or attachments could damage the product and may violate laws and regulations.

Most modern electronic equipment is shielded from RF signals. However, certain electronic equipment may not be shielded against the RF signals generated by Joya Touch.

Datalogic recommends persons with pacemakers or other medical devices to follow the same recommendations provided by Health Industry Manufacturers Associations for mobile phones.

Persons with pacemakers:

- Should **ALWAYS** keep this device more than twenty five (25) cm from their pacemaker and/or any other medical device;
- Should not carry this device in a breast pocket;
- Should keep the device at the opposite side of the pacemaker and/or any other medical device;
- Should turn this device **OFF** or move it immediately **AWAY** if there is any reason to suspect that interference is taking place.
- Should **ALWAYS** read pacemaker or any other medical device guides or should consult the manufacturer of the medical device to determine if it is adequately shielded from external RF energy.

In case of doubt concerning the use of wireless devices with an implanted medical device, contact your doctor.

**WARNING**

Turn this device **OFF** in health care facilities when any regulations posted in these areas instruct you to do so. Hospitals or health care facilities may use equipment that could be sensitive to external RF energy.

**WARNING**

RF signals may affect improperly installed or inadequately shielded electronic systems in motor vehicles. Check with the manufacturer or its representative regarding your vehicle. You should also consult the manufacturer of any equipment that has been added to your vehicle.

**WARNING**

An air bag inflates with great force. **DO NOT** place objects, including either installed or portable wireless equipment, in the area over the air bag or in the air bag deployment area. If a vehicle's wireless equipment is improperly installed and the air bag inflates, serious injury could result.



WARNING

Turn off the device when in any area with a potentially explosive atmosphere. Observe restrictions and follow closely any laws, regulations, warnings and best practices on the use of radio equipment near fuel storage areas or fuel distribution areas, chemical plants or where any operation involves use of explosive materials.

Do not store or carry flammable liquids, explosive gases or materials with the device or its parts or accessories.

Areas with a potentially explosive atmosphere are often, but not always, clearly marked or shown.

Sparks in such areas could cause an explosion or fire, resulting in injury or even death.



Technical Features

Technical Data

Physical Characteristics	
Dimensions	Handheld: 14.5 x 7.67 x 3.38 cm / 5.7 x 3 x 1.33 in Pistol Grip: 14.5 x 7.67 x 11.6 cm / 5.7 x 3 x 4.56 in
Weight (with battery)	Handheld: 275 g / 9.7 oz Pistol Grip: 310 g / 10.9 oz
Colors (standard)	Blue, Red, Green, Orange, Yellow, Grey
Color Customization	Topcase and battery covers (both handheld and pistol grip models), and Scan Trigger (pistol grip models) are available in various standard or custom colors
Display	4.3" full touch TFT-LCD color display; FWVGA: 854 x 480 pixels; 16M colors, LED backlight
Touch Screen	Capacitive, multitouch, Gorilla Glass 3
Physical Keys	Handheld: Scan fully programmable key Pistol Grip: Scan key and scan trigger, both fully programmable
Lighting	Software programmable, lights at the bottom of the battery cover

Electrical	
Battery	Replaceable battery pack with rechargeable Li-Ion batteries; 3.75v; 3,030 mAh (11.3 Watt-hours)
Wireless Charging	2 charging options: Fast Charging or Standard Charging
Environmental	
Drop Resistance	Withstands drops from 1.2 m / 4.0 ft onto concrete
Temperature	Operating: -10 to 50 °C / 14 to 122 °F
Interfaces	
Interfaces	USB 2.0 Client (with standard Micro-USB connector)
Microprocessor	XScale™ PXA310 @ 806 MHz; 32 bit
User Interfaces	
Vibration	Software programmable (available on Plus models)
Accelerometer	3-Axis accelerometer
SoftSpot	Virtual trigger/scan key
Trigger	Pistol grip models only
Wireless Communications	
Local Area Network (WLAN)	IEEE 802.11 a/b/g/n; Wi-Fi Security Standards, WEP, WPA, WPA2, TKIP, AES, PSK, Cisco CCX v4 compatible
Personal Area Network (WPAN)	Bluetooth® v4.0 - Dual Mode (Classic Bluetooth and BLE) (available on Plus models)

Reading Performance	
Image Sensor	WVGA: 752 x 480 pixels
Light Source	Illumination: White LEDs Aiming: 650 nm VLD
Typical Depth of Field	Minimum distance determined by symbol length and scan angle. Printing resolution, contrast, and ambient light dependent. 1D barcode 5.0 mils: 6.5 to 21.0 cm / 2.6 to 8.2 in 1D barcode 13.0 mils: 5.5 to 39.0 cm / 2.2 to 15.2 in Data Matrix 15.0 mils: 4.0 to 25.0 cm / 1.6 to 9.8 in
Minimum Resolution	Linear codes at 3 mils; 2D codes at 5 mils
Reading Indicators	Loudspeaker (Polyphonic); Datalogic's patented "Green Spot" technology for visual good-read feedback; Vibrator
Print Contrast Min.	25%
Scanning Angles	Pitch: $\pm 60^\circ$; Skew: $\pm 60^\circ$; Roll: up to $\pm 180^\circ$
Decoding Capability	
1D / Linear Codes	Auto discriminates all standard 1D codes including GS1 DataBar™ linear codes
2D Codes	Aztec Code, Data Matrix, MaxiCode, QR Code, UPU FICS, USPS Intelligent Mail, Optional Digimarc® barcode
Postal Codes	Australian Post, Japan Post, KIX Code, PLANET, POSTNET, Royal Mail Code (RM4SCC)
Stacked Codes	Micro-PDF417, PDF417, GS1 DataBar Composites, GS1 DataBar Expanded Stacked, GS1 DataBar Stacked, GS1 DataBar Stacked Omnidirectional

Software	
Configuration and Maintenance	Datalogic Configuration Utility (DCU) Datalogic Firmware Utility (DFU) Datalogic Desktop Utility (DDU)
Development	SDK Suite available upon request
System	
Memory	Joya Touch Basic: System RAM: 512 MB; System Flash: 512 MB Flash Disk Joya Touch Plus: System RAM: 512 MB; System Flash: 1 GB Flash Disk
Operating System	Microsoft Windows Embedded Compact 7 Professional
Warranty	
Warranty	1-Year Factory Warranty



Test Codes

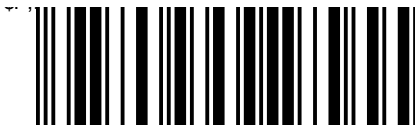
High Density Codes - 0.25 mm (10 mils)

Code 39



17162

Interleaved 2/5



0123456784

Code 128



test

High Density Codes (continued) - 0.25 mm (10 mils)

80%

EAN 13



80%

EAN 8



Medium Density Codes - 0.38 mm (15 mils)

Code 39



17162

Interleaved 2/5



0123456784

Code 128



test

Medium Density Codes (continued) - 0.38 mm (15 mils)

100%

EAN 13



100%

EAN 8



Low Density Codes - 0.50 mm (20 mils)

Code 39



17162

Interleaved 2/5



0123456784

Code 128



test

Low Density Codes (continued) - 0.50 mm (20 mils)

120%

EAN 13



120%

EAN 8



2D Codes

Datamatrix ECC200



Example

Inverse Datamatrix ECC200



Example

NOTES



Maintenance

Cleaning the Device

Periodically clean the Joya Touch device and the Joya Touch 3-Slot Cradle using a soft cloth slightly dampened with only water or Isopropyl Alcohol (70%).

Do not use any other cleaning agents (e.g. different alcohol, abrasive or corrosive products, solvents) or abrasive pads to clean the device.

Do not spray or pour liquids directly onto the device.

The device is not water resistant. Keep it dry.

Ergonomic Recommendations



In order to avoid or minimize the potential risk of ergonomic injury follow the recommendations below. Consult with your local Health & Safety Manager to ensure that you are adhering to your company's safety programs to prevent employee injury.

- Reduce or eliminate repetitive motion
- Maintain a natural position
- Reduce or eliminate excessive force
- Keep objects that are used frequently within easy reach
- Perform tasks at correct heights
- Reduce or eliminate vibration
- Reduce or eliminate direct pressure
- Provide adjustable workstations
- Provide adequate clearance
- Provide a suitable working environment
- Improve work procedures.



Safety and Regulatory Information



NOTE

Read this manual carefully before performing any type of connection to the Joya Touch.

The user is responsible for any damage caused by incorrect use of the equipment or by inobservance of the indication supplied in this manual.

General Safety Rules

- Before using the device and the battery pack, read carefully the chapter [Battery](#) on page 11.
- Use only the components and accessories supplied by the manufacturer for the specific Joya Touch being used.
- Do not attempt to disassemble the Joya Touch, as it does not contain parts that can be repaired by the user. Any tampering will invalidate the warranty.
- When replacing the battery pack or at the end of the operative life of the Joya Touch, disposal must be performed in compliance with the laws in force in your jurisdiction.
- Do not submerge the Joya Touch in liquid products.
- For further information or support, refer to this manual and to the Datalogic web site: www.datalogic.com.

Power Supply

The device is intended to be supplied by a self-contained rechargeable Lithium Ion battery pack (UL listed LPS/SELV power source) and/or by UL Listed/CSA Certified Power Unit LPS/SELV power source which supplies power directly to the unit via the micro USB connector of the cable.

The device could be also used with Certified Accessories (Dock/Cradle) which supply Wireless power. The Dock/Cradle accessories are intended to be supplied by a UL Listed/CSA Certified Power Unit LPS/SELV rating 12V, min 5A power source which supplies power via the power connector of the cable.

Any changes or modifications to equipment, not expressly approved by Datalogic could void the user's authority to operate the equipment.

Laser Safety

The following information applies to Laser Aiming System, used on Joya Touch Imager.

The laser light is visible to the human eye and is emitted from the window indicated in the figure below.

LASER LIGHT - DO NOT STARE INTO BEAM

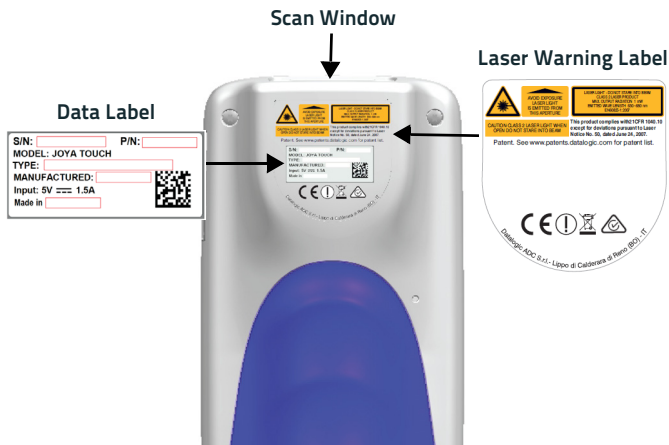
CLASS 2 LASER PRODUCT

MAX OUTPUT RADIATION 1 mW

COMPLIANT WITH EN 60825-1 (2007)



The artwork below may be only a draft. Please refer to the label attached to the product for information about certification marks.



ITALIANO	DEUTSCH	FRANÇAIS	ESPAÑOL
<p>LA LUCE LASER È VISIBILE ALL'OCCHIO UMANO E VIENE EMESSA DALLA FINESTRA INDICATA NELLA FIGURA.</p>	<p>DIE LASER-STRAHLUNG IST FÜR DAS MENSCHLICHE AUGE SICHTBAR UND WIRD AM STRAHLAUS TRITTSFENSTER AUSGESENDET (SIEHE BILD)</p>	<p>LE RAYON LASER EST VISIBLE À L'OEIL NU ET IL EST ÉMIS PAR LA FENÊTRE DÉSIGNÉE SUR L'ILLUSTRATION DANS LA FIGURE</p>	<p>A LUZ LÁSER ES VISIBLE AL OJO HUMANO Y ES EMITIDA POR LA VENTANA INDICADA EN LA FIGURA.</p>
<p>LUCE LASER NON FISSARE IL FASCIO APPARECCHIO LASER DI CLASSE 2 MASSIMA POTENZA MEDIA DI USCITA: 1 mW LUNGHEZZA D'ONDA EMESSA: 630~680 nm CONFORME A EN 60825-1 (2007)</p>	<p>LASERSTRAHLUNG NICHT IN DER STRAHL BLINKEN PRODUKT DER LASERKLASSE 2 MAXIMALE DURCHSCHNITTLICHE AUSGANGLEISTUNG: 1 mW WELLENLÄNGE: 630~680 nm ENTSPR. EN 60825-1 (2007)</p>	<p>RAYON LASER EVITER DE REGARDER LE RAYON APPAREIL LASER DE CLASSE 2 MAXIMUM PUISSANCE MOYENNE DE SORTIE: 1 mW LONGUER D'ONDE EMISE: 630~680 nm CONFORME A EN 60825-1 (2007)</p>	<p>RAYO LÁSER NO MIRAR FIJO EL RAYO APARATO LÁSER DE CLASE 2 MÁXIMA POTENCIA MEDIA DE SALIDA: 1 mW LONGITUD DE ONDA EMITIDA: 630~680 nm CONFORME A EN 60825-1 (2007)</p>

ENGLISH

The following information is provided to comply with the rules imposed by international authorities and refers to the correct use of your device.

STANDARD LASER SAFETY REGULATIONS

This product conforms to the applicable requirements of both CDRH 21 CFR 1040 and EN 60825-1 at the date of manufacture.

For installation, use and maintenance, it is not necessary to open the device.



WARNING

Do not attempt to open or otherwise service any components in the optics cavity. Opening or servicing any part of the optics cavity by unauthorized personnel may violate laser safety regulations. The optics system is a factory only repair item.



WARNING

Use of controls or adjustments or performance of procedures other than those specified herein may result in exposure to hazardous visible laser light.

The product utilizes a low-power laser diode. Although staring directly at the laser beam momentarily causes no known biological damage, avoid staring at the beam as one would with any very strong light source, such as the sun. Avoid shining laser light into any person's eye, even through reflective surfaces such as mirrors, etc.



WARNING

Use of optical systems with the scanner will increase eye hazard. Optical instruments include binoculars, microscopes, eye glasses and magnifying glasses.

ITALIANO

Le seguenti informazioni vengono fornite dietro direttive delle autorità internazionali e si riferiscono all'uso corretto del terminale.

NORMATIVE STANDARD PER LA SICUREZZA LASER

Questo prodotto risulta conforme alle normative vigenti sulla sicurezza laser alla data di produzione: CDRH 21 CFR 1040 e EN 60825-1.

Non si rende mai necessario aprire l'apparecchio per motivi di installazione, utilizzo o manutenzione



ATTENZIONE

Non tentare di accedere allo scomparto contenete i componenti ottici o di farne la manutenzione.

L'apertura dello scomparto, o la manutenzione di qualsiasi parte ottica da parte di personale non autorizzato, potrebbe violare le norme della sicurezza. Il sistema ottico può essere riparato solamente alla fabbrica.



ATTENZIONE

L'utilizzo di procedure o regolazioni differenti da quelle descritte nella documentazione può provocare un'esposizione pericolosa a luce laser visibile.

Il prodotto utilizza un diodo laser a bassa potenza. Sebbene non siano noti danni riportati dall'occhio umano in seguito ad una esposizione di breve durata, evitare di fissare il raggio laser così come si eviterebbe qualsiasi altra sorgente di luminosità intensa, ad esempio il sole. Evitare inoltre di dirigere il raggio laser negli occhi di un osservatore, anche attraverso superfici riflettenti come gli specchi.



ATTENZIONE

L'uso di strumenti ottici assieme allo scanner può aumentare il pericolo di danno agli occhi. Tali strumenti ottici includono cannocchiali, microscopi, occhiali e lenti di ingrandimento.

DEUTSCH

Die folgenden Informationen stimmen mit den Sicherheitshinweisen überein, die von internationalen Behörden auferlegt wurden, und sie beziehen sich auf den korrekten Gebrauch vom Terminal.

NORM FÜR DIE LASERSICHERHEIT

Dies Produkt entspricht am Tag der Herstellung den gültigen EN 60825-1 und CDRH 21 CFR 1040 Normen für die Lasersicherheit.

Es ist nicht notwendig, das Gerät wegen Betrieb oder Installations-, und Wartungs-Arbeiten zu öffnen.



ACHTUNG

Unter keinen Umständen darf versucht werden, die Komponenten im Optikhohlraum zu öffnen oder auf irgendwelche andere Weise zu warten. Das Öffnen bzw. Warten der Komponenten im Optikhohlraum durch unbefugtes Personal verstößt gegen die Laser-Sicherheitsbestimmungen. Das Optiksyst \ddot{u} m darf nur werkseitig repariert werden.



ACHTUNG

Jegliche Änderungen am Gerät sowie Vorgehensweisen, die nicht in dieser Betriebsanleitung beschreiben werden, können ein gefährliches Laserlicht verursachen.

Der Produkt benutzt eine Laserdiode. Obwohl zur Zeit keine Augenschäden von kurzen Einstrahlungen bekannt sind, sollten Sie es vermeiden für längere Zeit in den Laserstrahl zu schauen, genauso wenig wie in starke Lichtquellen (z.B. die Sonne). Vermeiden Sie es, den Laserstrahl weder gegen die Augen eines Beobachters, noch gegen reflektierende Oberflächen zu richten.



ACHTUNG

Die Verwendung von Optiksyst \ddot{u} men mit diesem Scanner erhöht die Gefahr einer Augenbeschädigung. Zu optischen Instrumenten geh \ddot{o} ren unter anderem Ferngläser, Mikroskope, Brillen und Vergrößerungsgläser.

FRANÇAIS

Les informations suivantes sont fournies selon les règles fixées par les autorités internationales et se réfèrent à une correcte utilisation du terminal.

NORMES DE SECURITE LASER

Ce produit est conforme aux normes de sécurité laser en vigueur à sa date de fabrication: CDRH 21 CFR 1040 s et EN 60825-1.

Il n'est pas nécessaire d'ouvrir l'appareil pour l'installation, l'utilisation ou l'entretien.



ATTENTION

Ne pas essayer d'ouvrir ou de réparer les composants de la cavité optique. L'ouverture de la cavité optique ou la réparation de ses composants par une personne non qualifiée peut entraîner le nonrespect des règles de sécurité relatives au laser. Le système optique ne peut être réparé qu'en usine.



ATTENTION

L'utilisation de procédures ou réglages différents de ceux donnés ici peut entraîner une dangereuse exposition à lumière laser visible.

Le produit utilise une diode laser. Aucun dommage aux yeux humains n'a été constaté à la suite d'une exposition au rayon laser. Eviter de regarder fixement le rayon, comme toute autre source lumineuse intense telle que le soleil. Eviter aussi de diriger le rayon vers les yeux d'un observateur, même à travers des surfaces réfléchissantes (miroirs, par exemple).



ATTENTION

L'utilisation d'instruments optiques avec le scanner augmente le danger pour les yeux. Les instruments optiques comprennent les jumelles, les microscopes, les lunettes et les verres grossissants.

ESPAÑOL

Las informaciones siguientes son presentadas en conformidad con las disposiciones de las autoridades internacionales y se refieren al uso correcto del terminal.

NORMATIVAS ESTÁNDAR PARA LA SEGURIDAD LÁSER

Este aparato resulta conforme a las normativas vigentes de seguridad láser a la fecha de producción: CDRH 21 CFR 1040 y EN 60825-1.

No es necesario abrir el aparato para la instalación, la utilización o la manutención.



ATENCIÓN

No intente abrir o de ninguna manera dar servicio a ninguno de los componentes del receptáculo óptico. Abrir o dar servicio a las piezas del receptáculo óptico por parte del personal no autorizado podría ser una violación a los reglamentos de seguridad. El sistema óptico se puede reparar en la fábrica solamente.



ATENCIÓN

La utilización de procedimientos o regulaciones diferentes de aquellas descritas en la documentación puede causar una exposición peligrosa a la luz láser visible.

El aparato utiliza un diodo láser a baja potencia. No son notorios daños a los ojos humanos a consecuencia de una exposición de corta duración. Eviten de mirar fijo el rayo láser así como evitarían cualquiera otra fuente de luminosidad intensa, por ejemplo el sol. Además, eviten de dirigir el rayo láser hacia los ojos de un observador, también a través de superficies reflectantes como los espejos.

**ATENCIÓN**

El uso de sistemas ópticos con el escáner aumentará el riesgo de daños oculares. Los instrumentos ópticos incluyen binoculares, microscopios, lentes y lupas.

LED Class

LED illuminator integrated in the imager engine is classified as 'EXEMPT RISK GROUP' according to IEC62471.

Marking and European Economic Area (EEA)

In radio systems configured with mobile computers and access points, the frequencies to be used must be allowed by the spectrum authorities of the specific country in which the installation takes place. Be absolutely sure that the system frequencies are correctly set to be compliant with the spectrum requirements of the country.

The Radio modules used in this product automatically adapt to the frequencies set by the system and do not require any parameter settings.

Statement of Compliance

cs Česky [Czech]	Datalogic S.r.l. tímto prohlašuje, že tento Joya Touch je ve shodě se základními požadavky a dalšími příslušnými ustanoveními směrnice 1999/5/ES - 2011/65/EU.
da Dansk [Danish]	Undertegnede Datalogic S.r.l. erklærer herved, at følgende udstyr Joya Touch overholder de væsentlige krav og øvrige relevante krav i direktiv 1999/5/EF - 2011/65/EU.
de Deutsch [German]	Hiermit erklärt Datalogic S.r.l., dass sich das Gerät Joya Touch in Übereinstimmung mit den grundlegenden Anforderungen und den übrigen einschlägigen Bestimmungen der Richtlinie 1999/5/EG - 2011/65/EU befindet.
et Eesti [Estonian]	Käesolevaga kinnitab Datalogic S.r.l. seadme Joya Touch vastavust direktiivi 1999/5/EÜ - 2011/65/EU põhinõuetele ja nimetatud direktiivist tulenevatele teistele asjakohastele sätetele.
en English	Hereby, Datalogic S.r.l. declares that Joya Touch is in compliance with the essential requirements and other relevant provisions of Directive 1999/5/EC and 2011/65/EU.
es Español [Spanish]	Por medio de la presente Datalogic S.r.l. declara que el Joya Touch cumple con los requisitos esenciales y cualesquiera otras disposiciones aplicables o exigibles de la Directiva 1999/5/CE - 2011/65/EU.
el Ελληνική [Greek]	ΜΕ ΤΗΝ ΠΑΡΟΥΣΑ Datalogic S.r.l. ΔΗΛΩΝΕΙ ΟΤΙ Joya Touch ΣΥΜΜΟΡΦΩΝΕΤΑΙ ΠΡΟΣ ΤΙΣ ΟΥΣΙΩΔΕΙΣ ΑΠΑΙΤΗΣΕΙΣ ΚΑΙ ΤΙΣ ΛΟΙΠΕΣ ΣΧΕΤΙΚΕΣ ΔΙΑΤΑΞΕΙΣ ΤΗΣ ΟΔΗΓΙΑΣ 1999/5/ΕΚ - 2011/65/ΕΥ.
fr Français [French]	Par la présente Datalogic S.r.l. déclare que l'appareil Joya Touch est conforme aux exigences essentielles et aux autres dispositions pertinentes de la directive 1999/5/CE - 2011/65/EU.

it Italiano [Italian]	Con la presente Datalogic S.r.l. dichiara che questo Joya Touch è conforme ai requisiti essenziali ed alle altre disposizioni pertinenti stabilite dalla direttiva 1999/5/CE - 2011/65/EU.
Latviski [Latvian]	Ar šo Datalogic S.r.l. deklarē, ka Joya Touch atbilst Direktīvas 1999/5/EK - 2011/65/EU būtiskajām prasībām un citiem ar to saistītajiem noteikumiem.
Lietuvių [Lithuanian]	Siuo Datalogic S.r.l. deklaruoja, kad šis Joya Touch atitinka esminius reikalavimus ir kitas 1999/5/EB - 2011/65/EU Direktyvos nuostatas.
nl Nederlands [Dutch]	Hierbij verklaart Datalogic S.r.l. dat het toestel Joya Touch in overeenstemming is met de essentiële eisen en de andere relevante bepalingen van richtlijn 1999/5/EG - 2011/65/EU.
mt Malti [Maltese]	Hawnhekk, Datalogic S.r.l., jiddikjara li dan Joya Touch jikkonforma mal-ħtiġijiet essenzjali u ma provvedimenti oħrajn relevanti li hemm fid-Dirrettiva 1999/5/EC - 2011/65/EU.
hu Magyar [Hungarian]	Alulírott, Datalogic S.r.l. nyilatkozom, hogy a Joya Touch megfelel a vonatkozó alapvető követelményeknek és az 1999/5/EC - 2011/65/EU irányelv egyéb előírásainak.
pl Polski [Polish]	Niniejszym Datalogic S.r.l. oświadcza, że Joya Touch jest zgodny z zasadniczymi wymogami oraz pozostałymi stosownymi postanowieniami Dyrektywy 1999/5/EC - 2011/65/EU.
pt Português [Portuguese]	Datalogic S.r.l. declara que este Joya Touch está conforme com os requisitos essenciais e outras disposições da Directiva 1999/5/CE - 2011/65/EU.
sl Slovensko [Slovenian]	Datalogic S.r.l. izjavlja, da je ta Joya Touch v skladu z bistvenimi zahtevami in ostalimi relevantnimi določili direktive 1999/5/ES - 2011/65/EU.
Slovensky [Slovak]	Datalogic S.r.l. týmto vyhlasuje, že Joya Touch splňa základné požiadavky a všetky príslušné ustanovenia Smernice 1999/5/ES - 2011/65/EU.

fi Suomi [Finnish]	Datalogic S.r.l. vakuuttaa täten että Joya Touch tyyppinen laite on direktiivin 1999/5/EY - 2011/65/EU oleellisten vaatimusten ja sitä koskevien direktiivin muiden ehtojen mukainen.
sv Svenska [Swedish]	Härmed intygar Datalogic S.r.l. att denna Joya Touch står i överensstämmelse med de väsentliga egenskapskrav och övriga relevanta bestämmelser som framgår av direktiv 1999/5/EG - 2011/65/EU.

Radio Technologies and Frequency Bands

Joya Touch incorporates the following radio technologies and supports the corresponding frequencies, as specified below for Plus and Basic Variants:

Radio Technology	Frequency Bands	Plus Variants FCC ID: U4GJNGWB IC: 3862EJNGW	Basic Variants FCC ID: U4GJNGW IC: 3862EJNGW
WLAN IEEE 802.11a/b/g/n, 20MHz channels bandwidth (HT-20)	2.4GHz Frequency Bands: 2.412 – 2.472 MHz (EU / Japan) 2.412 – 2.462 MHz (USA) 5GHz Frequency Bands: 5.180 – 5.240 MHz 5.260 – 5.320 MHz 5.500 – 5.700 MHz 5.735 – 5.825 MHz (USA)	X	X
Bluetooth® V4.0 – Dual-Mode	2402-2480Mhz	X	
Wireless Charging (Receiver)	130kHz	X	X

Information for the User

ENGLISH

Contact the competent authority responsible for the management of radio frequency devices of your country to verify any possible restrictions or licenses required.

ITALIANO

Contatta l'autorità competente per la gestione degli apparati a radio frequenza del tuo paese, per verificare eventuali restrizioni o licenze.

FRANÇAIS

Contactez l'autorité compétente en la gestion des appareils à radio fréquence de votre pays pour vérifier d'éventuelles restrictions ou licences.

DEUTSCH

Wenden Sie sich an die für Radiofrequenzgeräte zuständige Behörde Ihres Landes, um zu prüfen ob es Einschränkungen gibt, oder eine Lizenz erforderlich ist.

ESPAÑOL

Contacta la autoridad competente para la gestión de los dispositivos de radio frecuencia de tu país, para verificar cualesquiera restricciones o licencias posibles requerida.

FCC/IC Labeling

Handheld variants with WLAN+BT radios	Pistol Grip variants with WLAN+BT radios
<div style="border: 1px solid black; padding: 5px; width: fit-content; margin: auto;"> FCC ID: U4GJNGWB IC: 3862E-JNGWB HVIN: JNG P HH </div>	<div style="border: 1px solid black; padding: 5px; width: fit-content; margin: auto;"> FCC ID: U4GJNGWB IC: 3862E-JNGWB HVIN: JNG P GUN </div>
Handheld variants with WLAN only radio	Pistol Grip variants with WLAN only radio
<div style="border: 1px solid black; padding: 5px; width: fit-content; margin: auto;"> FCC ID: U4GJNGW IC: 3862E-JNGW HVIN: JNG B HH </div>	<div style="border: 1px solid black; padding: 5px; width: fit-content; margin: auto;"> FCC ID: U4GJNGW IC: 3862E-JNGW HVIN: JNG B GUN </div>

FCC Compliance

This device complies with Part 15 of the FCC Rules.

Operation is subject to the following two conditions:

- (1) this device may not cause harmful interference, and
- (2) this device must accept any interference received, including interference that may cause undesired operation.

NOTICE:

This device is restricted to indoor use when operated in the 5.15 to 5.25 GHz frequency range.

Changes or modifications made to this equipment not expressly approved by Datalogic S.r.l. may void the FCC authorization to operate this equipment.

NOTE:

This equipment has been tested and found to comply with the limits for a Class B digital device, pursuant to Part 15 of the FCC Rules. These limits are designed to provide reasonable protection against harmful interference in a residential installation. This equipment generates, uses and can radiate radio frequency energy and, if not installed and used in accordance with the instructions, may cause harmful interference to radio communications. However, there is no guarantee that interference will not occur in a particular installation. If this equipment does cause harmful interference to radio or television reception, which can be determined by turning the equipment off and on, the user is encouraged to try to correct the interference by one or more of the following measures:

- Reorient or relocate the receiving antenna.
- Increase the separation between the equipment and receiver.
- Connect the equipment into an outlet on a circuit different from that to which the receiver is connected.
- Consult the dealer or an experienced radio/TV technician for help.

ISED Compliance

NOTICE:

This device complies with Industry Canada licence-exempt RSS standard(s).

Operation is subject to the following two conditions:

- (1) this device may not cause harmful interference, and
- (2) this device must accept any interference received, including interference that may cause undesired operation.

Le présent appareil est conforme aux CNR d'Industrie Canada applicables aux appareils radio exempts de licence. L'exploitation est autorisée aux deux conditions suivantes:

- (1) l'appareil ne doit pas produire de brouillage, et
- (2) l'utilisateur de l'appareil doit accepter tout brouillage radioélectrique subi, même si le brouillage est susceptible d'en compromettre le fonctionnement.

CAUTION:

(i) the device for operation in the band 5150-5250 MHz is only for indoor use to reduce the potential for harmful interference to co-channel mobile satellite systems;

(ii) high-power radars are allocated as primary users (i.e. priority users) of the bands 5250-5350MHz and 5650-5850 MHz and that these radars could cause interference and/or damage to LE-LAN devices.

AVERTISSEMENT:

(i) les dispositifs fonctionnant dans la bande 5 150-5 250 MHz sont réservés uniquement pour une utilisation à l'intérieur afin de réduire les risques de brouillage préjudiciable aux systèmes de satellites mobiles utilisant les mêmes canaux;

(ii) les utilisateurs de radars de haute puissance sont désignés utilisateurs principaux (c.-à-d., qu'ils ont la priorité) pour les bandes 5 250-5 350 MHz et 5 650-5 850 MHz et que ces radars pourraient causer du brouillage et/ou des dommages aux dispositifs LAN-EL.

Radiofrequency Radiation Exposure Information

This device was tested for handheld and body-worn conditions, according to international Standards covering human exposure to electromagnetic fields from radio devices.

More information about the relevant Standards for SAR measurement methods and procedures may be found in the CE DoC included in the product user manual available at www.datalogic.com website and at the FCC public listing www.fcc.gov under the FCC IDs specified in the FCC/IC labeling section.

Europe

This device is compliant with SAR limits for general population/uncontrolled exposure specified in Council Recommendation 1999/519/EC Annex II.

US and Canada

For body worn operation, this device has been tested and meets the FCC/ISED RF exposure guidelines for use with an accessory that contains no metal and the positions the handset a minimum of 0 cm from the body. Use of other enhancements may not ensure compliance with FCC/ISED RF exposure guidelines.

Cet équipement peut être installé et utilisé à une distance minimale de 0 cm entre le radiateur et votre corps.

The antenna(s) used for this transmitter must not be co-located or operating in conjunction with any other antenna or transmitter, expect those approved under the filing.

WEEE Compliance



Information for the user

At the end of its useful life, the product marked with the crossed out wheeled wastebin must be disposed of separately from urban waste. For more detailed information about disposal, contact the supplier that provided you with the product in question or consult the dedicated section at the website <http://www.datalogic.com>.

Informazione per gli utenti

L'apparecchiatura che riporta il simbolo del bidone barrato deve essere smaltita, alla fine della sua vita utile, separatamente dai rifiuti urbani.

Per maggiori dettagli sulle modalità di smaltimento, contattare il Fornitore dal quale è stata acquistata l'apparecchiatura o consultare la sezione dedicata sul sito <http://www.datalogic.com>.

Information aux utilisateurs

Au terme de sa vie utile, le produit qui porte le symbole d'un caisson à ordures barré ne doit pas être éliminé avec les déchets urbains.

Pour obtenir des informations complémentaires concernant l'élimination, veuillez contacter le fournisseur auprès duquel vous avez acheté le produit ou consulter la section consacrée au site Web <http://www.datalogic.com>.

Información para el usuario

Al final de su vida útil, el producto marcado con un símbolo de contenedor de basura móvil tachado no debe eliminarse junto a los desechos urbanos.

Para obtener una información más detallada sobre la eliminación, por favor, póngase en contacto con el proveedor donde lo compró o consultar la sección dedicada en el Web site <http://www.datalogic.com>.

Benutzerinformation bezüglich

Am Ende des Gerätelebenszyklus darf das Produkt nicht über den städtischen Hausmüll entsorgt werden. Eine entsprechende Mülltrennung ist erforderlich.

Weitere Informationen zu dieser Richtlinie erhalten sie von ihrem Lieferanten über den sie das Produkt erworben haben, oder besuchen sie unsere Homepage unter <http://www.datalogic.com>.

KC Compliance



MSIP-CMM-DLs-JOYATOUCH

NOTES



Support Through the Website

Datalogic provides several services as well as technical support through its website.

Log on to www.datalogic.com and click on the **SUPPORT** link which gives you access to:

Downloads by selecting your product model from the dropdown list in the Search by Product field for specific Data Sheets, Manuals, Software & Utilities, and Drawings;

Repair Program for On-Line Return Material Authorizations (RMAs) plus Repair Center contact information;

Customer Service containing details about Maintenance Agreements;

Technical Support through email or phone.

Reference Documentation

For further information regarding Joya Touch refer to the SDK Help on-line and to the Joya Touch User's Manual, downloadable from our website www.datalogic.com.

Warranty Terms and Conditions

The warranty period is 1 year for the device and 90 days for consumables (e.g. battery, power supply, cable etc.) from date of purchase at our company.

NOTES



Glossary

Access Point

A device that provides transparent access between Ethernet wired networks and IEEE 802.11 interoperable radio-equipped mobile units. Hand-held mobile computers, PDAs or other devices equipped with radio cards, communicate with wired networks using Access Points (AP). The mobile unit (mobile computer) may roam among the APs in the same subnet while maintaining a continuous, seamless connection to the wired network.

ASCII

American Standard Code for Information Interchange. A 7 bit-plus-parity code representing 128 letters, numerals, punctuation marks and control characters. It is a standard data transmission code in the U.S.

Bar Code

A pattern of variable-width bars and spaces which represents numeric or alphanumeric data in binary form. The general format of a bar code symbol consists of a leading margin, start character, data or message character, check character (if any), stop character, and trailing margin. Within this framework, each recognizable symbology uses its own unique format.

Bit

Binary digit. One bit is the basic unit of binary information. Generally, eight consecutive bits compose one byte of data. The pattern of 0 and 1 values within the byte determines its meaning.

Bluetooth@

A standard radio technology using a proprietary protocol. The onboard Bluetooth@ module in the device is compatible with the 2.1 protocol with Enhanced Data Rate (EDR).

Boot

The process a computer goes through when it starts. During boot, the computer can run self-diagnostic tests and configure hardware and software.

Byte

On an addressable boundary, eight adjacent binary digits (0 and 1) combined in a pattern to represent a specific character or numeric value. Bits are numbered from the right, 0 through 7, with bit 0 the low-order bit. One byte in memory can be used to store one ASCII character.

CDRH

Center for Devices and Radiological Health. A federal agency responsible for regulating laser product safety. This agency specifies various laser operation classes based on power output during operation.

Character

A pattern of bars and spaces which either directly represents data or indicates a control function, such as a number, letter, punctuation mark, or communications control contained in a message.

Decode

To recognize a bar code symbology (e.g., Codabar, Code 128, Code 3 of 9, UPC/EAN, etc.) and convert the content of the bar code scanned from a visual pattern into electronic data.

Density (Bar Code Density)

The number of characters represented per unit of measurement (e.g., characters per inch).

Depth of Field (DOF)

The portion of a scene that appears acceptably sharp in the image. Although a lens can precisely focus at only one distance, the decrease in sharpness is gradual on each side of the focused distance, so that within the DOF, the unsharpness is imperceptible under normal viewing conditions.

Dock

A dock is used for charging the terminal battery and for communicating with a host computer, and provides a storage place for the terminal when not in use.

Ethernet

The standard local area network (LAN) access method. A reference to "LAN", "LAN connection" or "network card" automatically implies Ethernet. Defined by the IEEE as the 802.3 standard, Ethernet is used to connect computers in a company or home network as well as to connect a single computer to a cable modem or DSL modem for Internet access.

Firmware

A software program or set of instructions programmed on a hardware device. It provides the necessary instructions for how the device communicates with the other computer hardware. Firmware

is typically stored in the flash ROM of a hardware device. While ROM is "read-only memory," flash ROM can be erased and rewritten because it is actually a type of flash memory.

Flash Memory

Non-volatile memory for storing application and configuration files.

Host

A computer that serves other mobile computers in a network, providing services such as network control, database access, special programs, supervisory programs, or programming languages.

IEEE 802.11

A set of standards carrying out wireless local area network (WLAN) computer communication in the 2.4, 3.6 and 5 GHz frequency bands. They are created and maintained by the IEEE LAN/MAN Standards Committee.

IP

Internet Protocol. The IP part of the TCP/IP communications protocol. IP implements the network layer (layer 3) of the protocol, which contains a network address and is used to route a message to a different network or subnetwork. IP accepts 'packets' from the layer 4 transport protocol (TCP or UDP), adds its own header to it and delivers a 'datagram' to the layer 2 data link protocol. It may also break the packet into fragments to support the maximum transmission unit (MTU) of the network.

IP Address

(Internet Protocol address) The address of a computer attached to an IP network. Every client and server station must have a unique IP address. A 32-bit address used by a computer on a IP network. Client workstations have either a permanent address or one that is

dynamically assigned to them each session. IP addresses are written as four sets of numbers separated by periods; for example, 204.171.64.2.

Laser

Light Amplification by Stimulated Emission of Radiation. The laser is an intense light source. Light from a laser is all the same frequency, unlike the output of an incandescent bulb. Laser light is typically coherent and has a high energy density.

Laser Diode

A gallium-arsenide semiconductor type of laser connected to a power source to generate a laser beam. This laser type is a compact source of coherent light.

Light Emitting Diode (LED)

A low power electronic light source commonly used as an indicator light. It uses less power than an incandescent light bulb but more than a Liquid Crystal Display (LCD).

Liquid Crystal Display (LCD)

A display that uses liquid crystal sealed between two glass plates. The crystals are excited by precise electrical charges, causing them to reflect light outside according to their bias. They use little electricity and react relatively quickly. They require external light to reflect their information to the user.

MIL

1 mil = 1 thousandth of an inch.

Parameter

A variable that can have different values assigned to it.

RAM

Random Access memory. Data in RAM can be accessed in random order, and quickly written and read.

Resolution

The narrowest element dimension which is distinguished by a particular reading device or printed with a particular device or method.

RF

Radio Frequency.

Scanner

An electronic device used to scan bar code symbols and produce a digitized pattern that corresponds to the bars and spaces of the symbol. Its three main components are:

- Light source (laser or photoelectric cell) - illuminates a bar code.
- Photodetector - registers the difference in reflected light (more light reflected from spaces).
- Signal conditioning circuit - transforms optical detector output into a digitized bar pattern.

SDK

Software Development Kit.

Symbol

A scannable unit that encodes data within the conventions of a certain symbology, usually including start/stop characters, quiet zones, data characters and check characters.

Symbology

The structural rules and conventions for representing data within a particular bar code type (e.g. UPC/EAN, Code 39, PDF417, etc.).

USB

Universal Serial Bus. Type of serial bus that allows peripheral devices (disks, modems, printers, digitizers, data gloves, etc.) to be easily connected to a computer. A 'plug-and-play" interface, it allows a device to be added without an adapter card and without rebooting the computer (the latter is known as hot-plugging). The USB standard, developed by several major computer and telecommunications companies, supports data-transfer speeds up to 12 megabits per second, multiple data streams, and up to 127 peripherals.

WLAN

A Wireless Local Area Network links devices via a wireless distribution method (typically spread-spectrum or OFDM radio), and usually provides a connection through an access point to the wider internet. This gives users the mobility to move around within a local coverage area and still be connected to the network.

WPAN

A Wireless Personal Area Network is a personal area network - a network for interconnecting devices centered around an individual person's workspace - in which the connections are wireless. Typically, a wireless personal area network uses some technology that permits communication within about 10 meters - in other words, a very short range.



DATALOGIC

www.datalogic.com

©2016-2017 Datalogic S.p.A. and/or its affiliates. All rights reserved.
Datalogic and the Datalogic logo are registered trademarks of Datalogic S.p.A. in many countries, including the U.S. and the E.U.

Datalogic S.r.l.

Via S. Vitalino, 13 | Lippo di Calderara di Reno
BO 40012 | Italy

Telephone: (+39) 051-3147011 | Fax: (+39) 051-3147205

July 2018