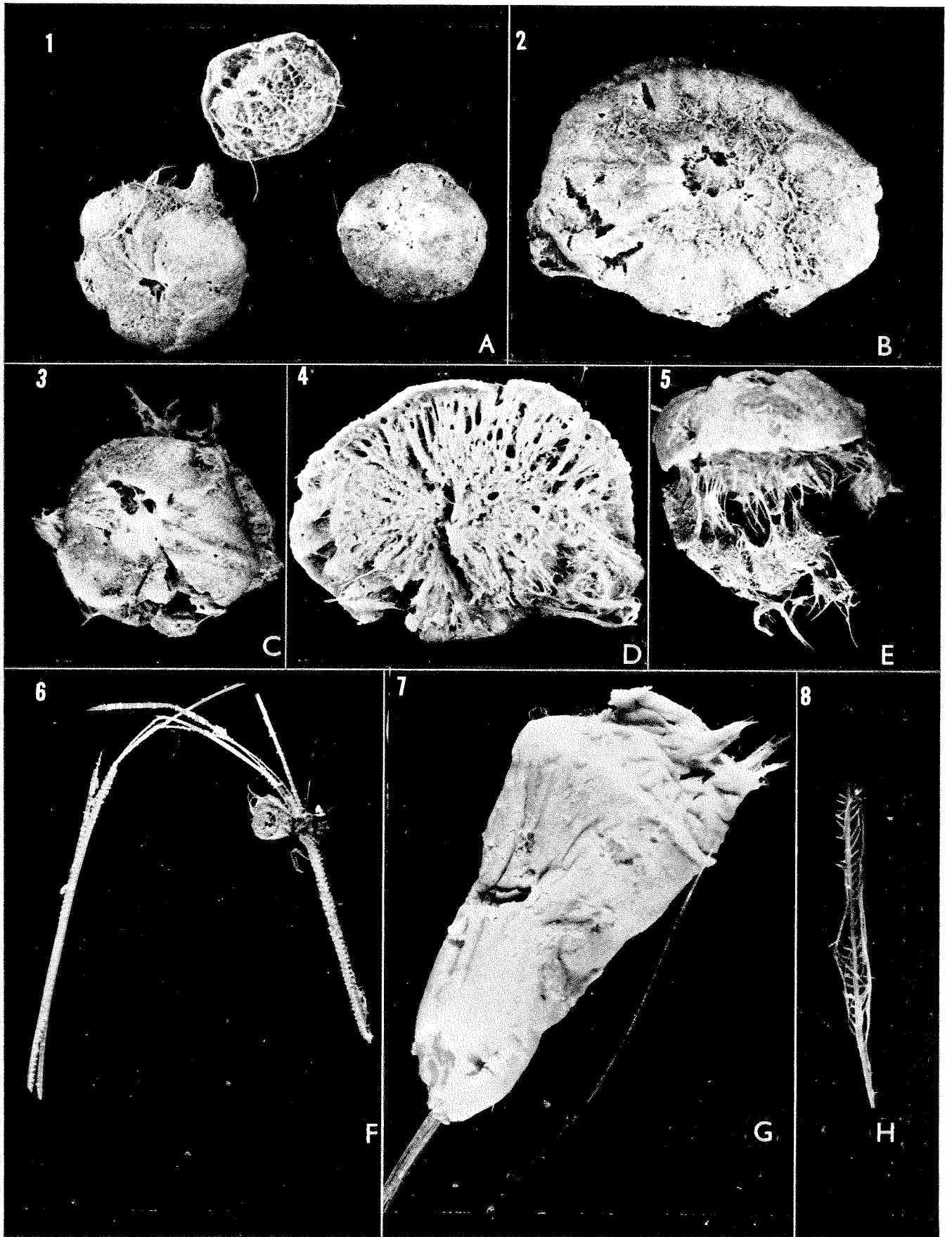


A. *Geodia basilea* n. sp.; x 0.6.
 B. *Histodermella ingolfi* Lundbeck; x 1.
 C. *Tylosesma vestibularis* Wilson; x 1.7.

D. *Tylosesma vestibularis* Wilson; x 1.2.
 E. *Geodia spherastrea* n. sp.; x 1.9.
 F, G. *Cladorhiza ephyrula* n. sp.; 1.9.

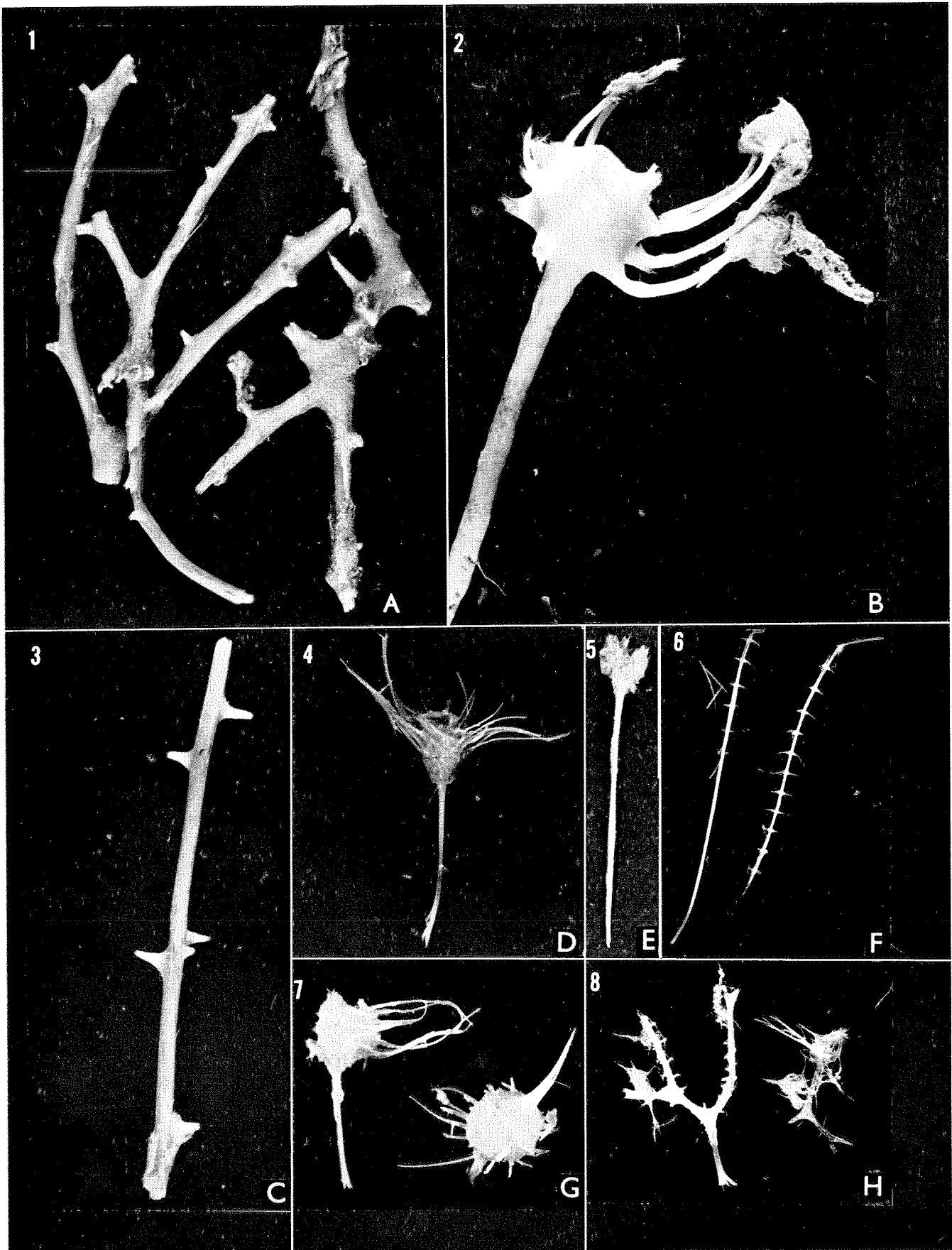


A-E. *Thenea wrighti* Sollas; x 1.

F. *Cladorhiza linearis* R. et D.; x 1.1.

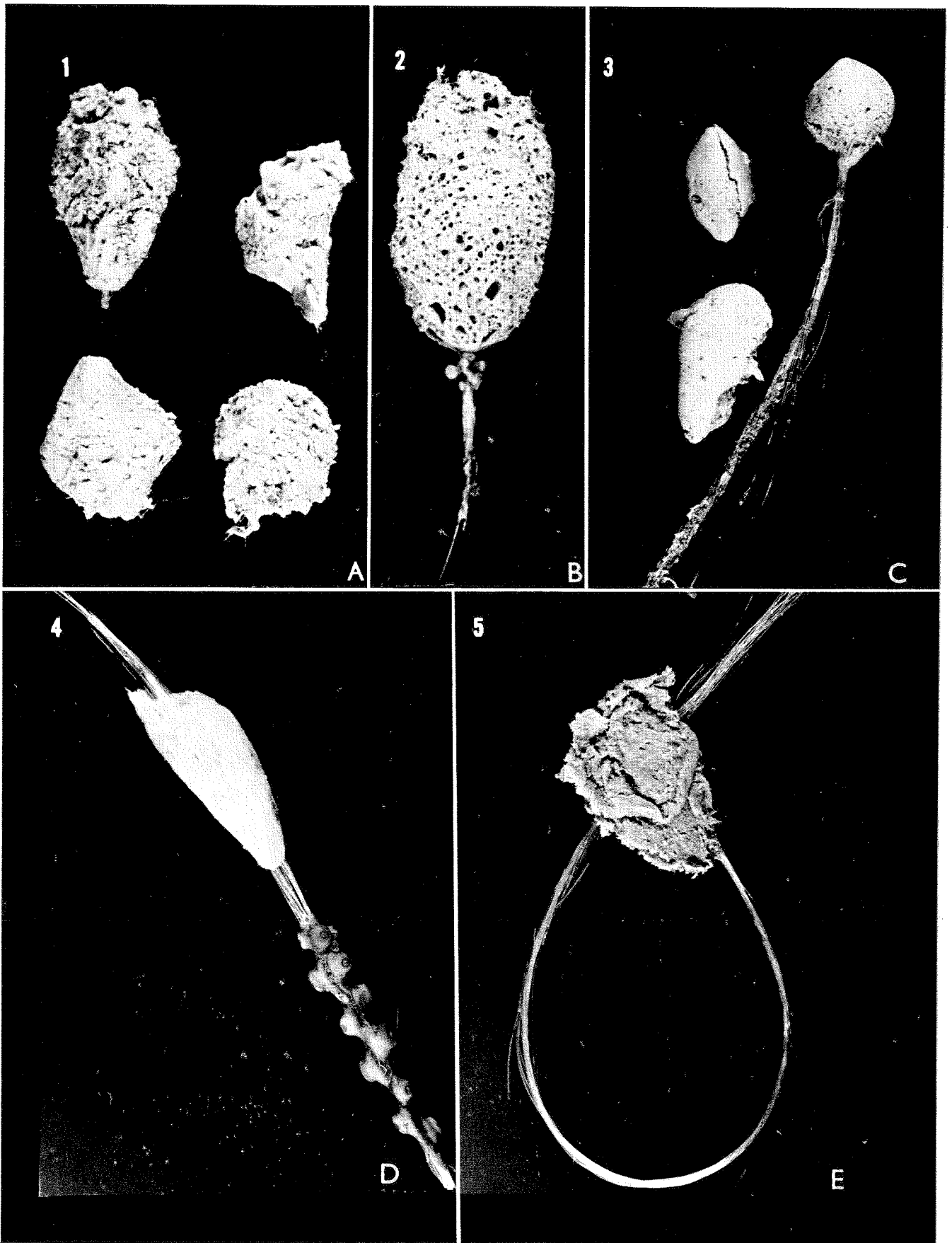
G. *Cyliconema madagascarense* n. sp.; x 1.4.

H. *Asbestopluma biserialis* R. et D.; x 1.



A. *Chondrocladia asigmata* n. sp.; x 1.
 B. *Chondrocladia multichela* n. sp.; x 1.
 C. *Chondrocladia asigmata* n. sp.; x 1.
 D. *Chondrocladia clavata* R. et D.; x 1.

E. *Tethycordyla pediculata* n. sp.; x 1.9.
 F. *Cladorhiza microchela* n. sp.; x 1.
 G. *Cladorhiza nematophora* n. sp.; x 1.1.
 H. *Chondrocladia dichotoma* n. sp.; x 1.



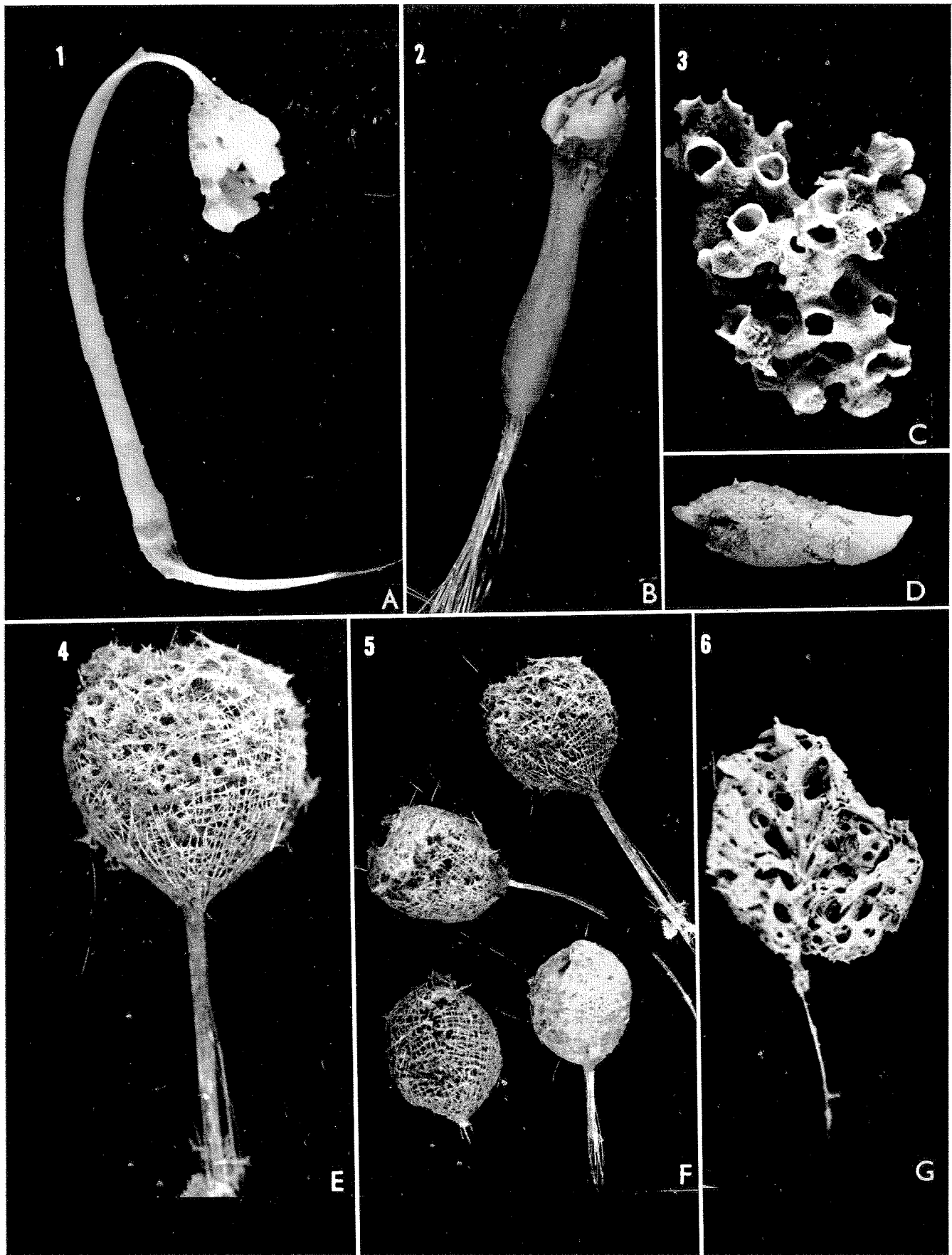
A. *Corynonema tenuifusum* (Ldf.); x 1.

B. *Cyliconema tasmani* n. sp.; x 1.

C. *Corynonema tenuifusum* Ldf.; x 0.6.

D. *Oonema bianchoratum* (Wilson); x 1.1.

E. *Cyliconema abyssale* n. sp.; x 0.5.



A. *Malacosaccus erectus* n. sp.; x 0.7.

B. *Oonema bipinnulum* n. sp.; x 1.

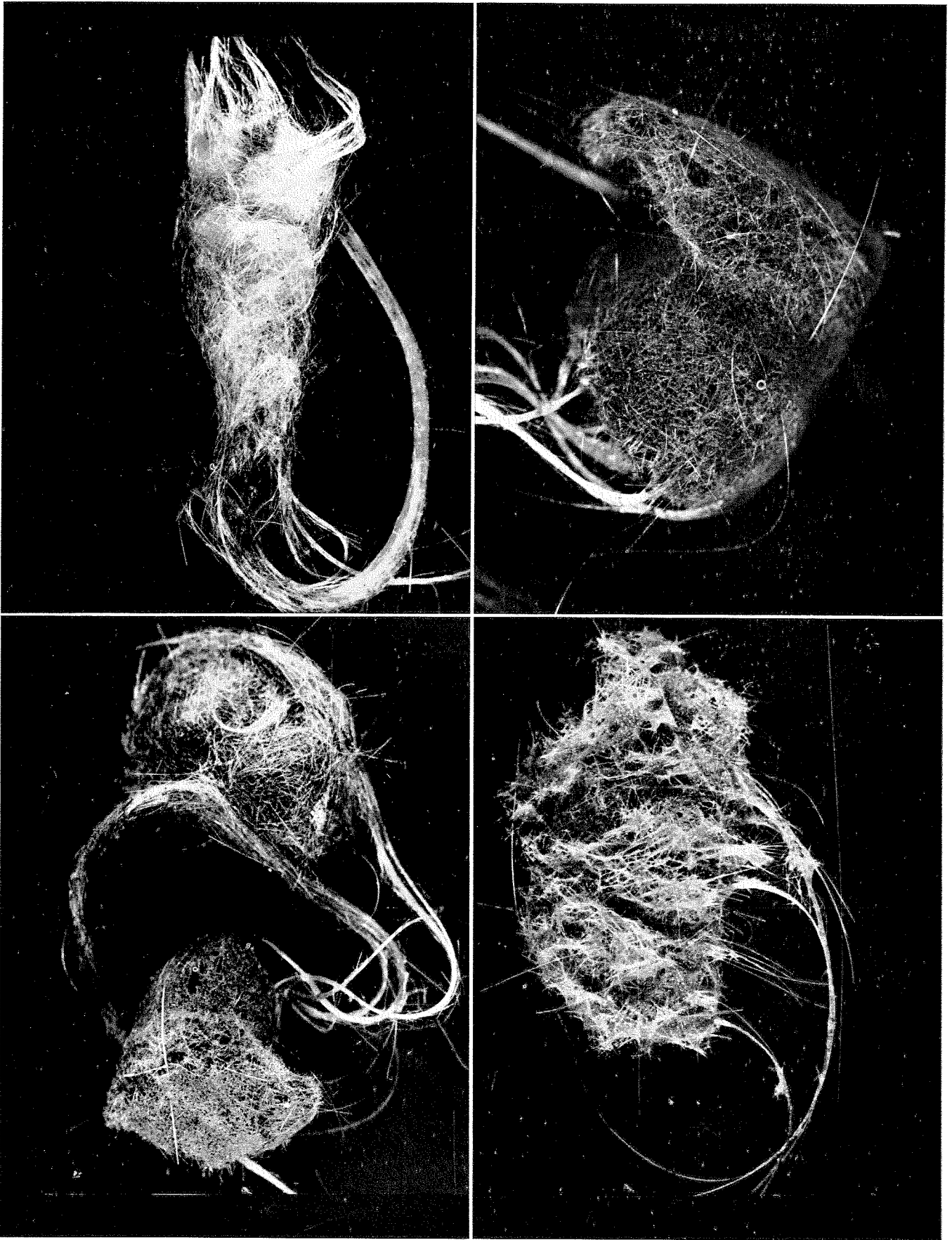
C. *Pararete farreopsis* (Carter); x 0.8.

D. *Leptonema choaniferum* n. sp.; x 1.2.

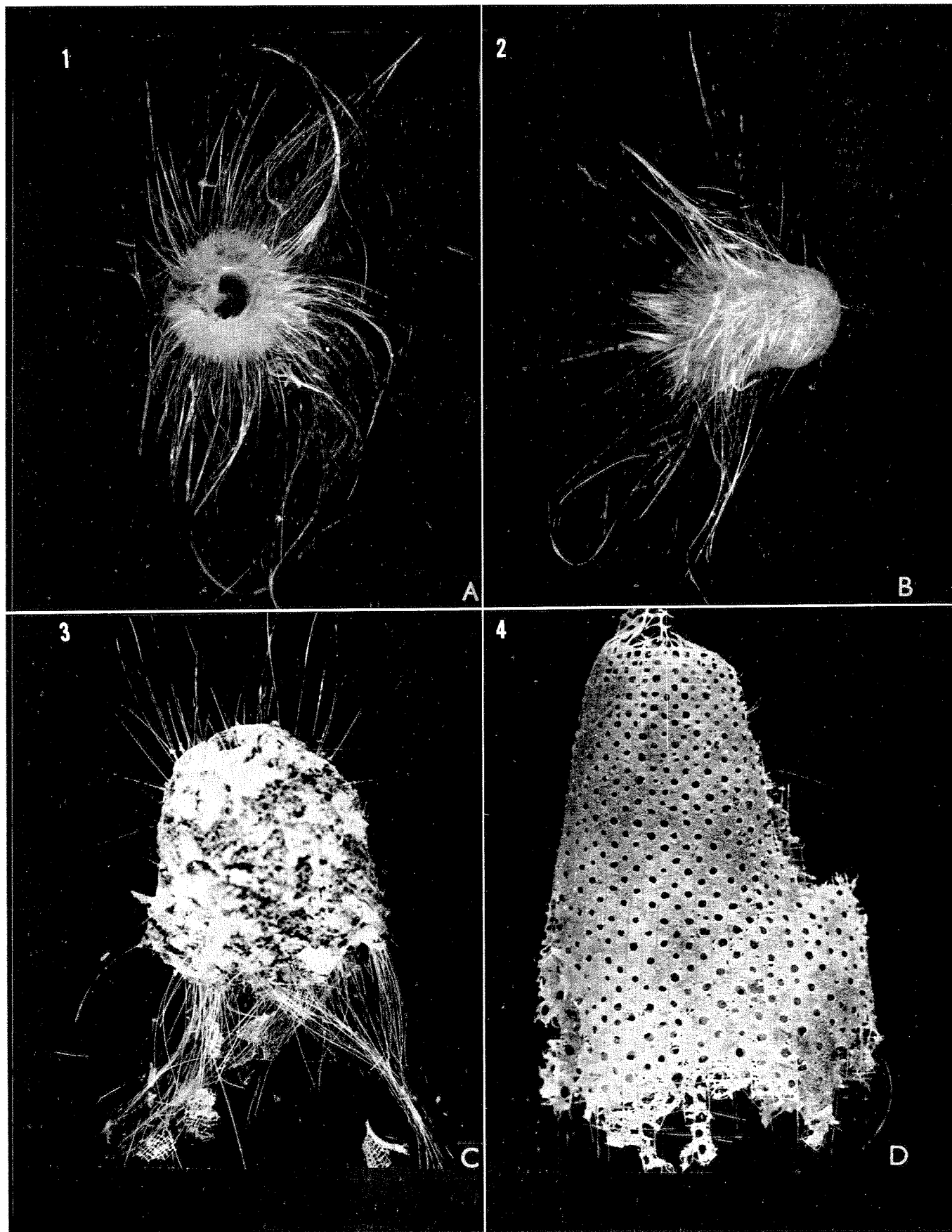
E. *Cyliconema polycaulum* (Ldf.); x 1.3.

F. *Cyliconema polycaulum* (Ldf.) x 0.8.

G. *Cyliconema curvisclera* n. sp.; x 1.



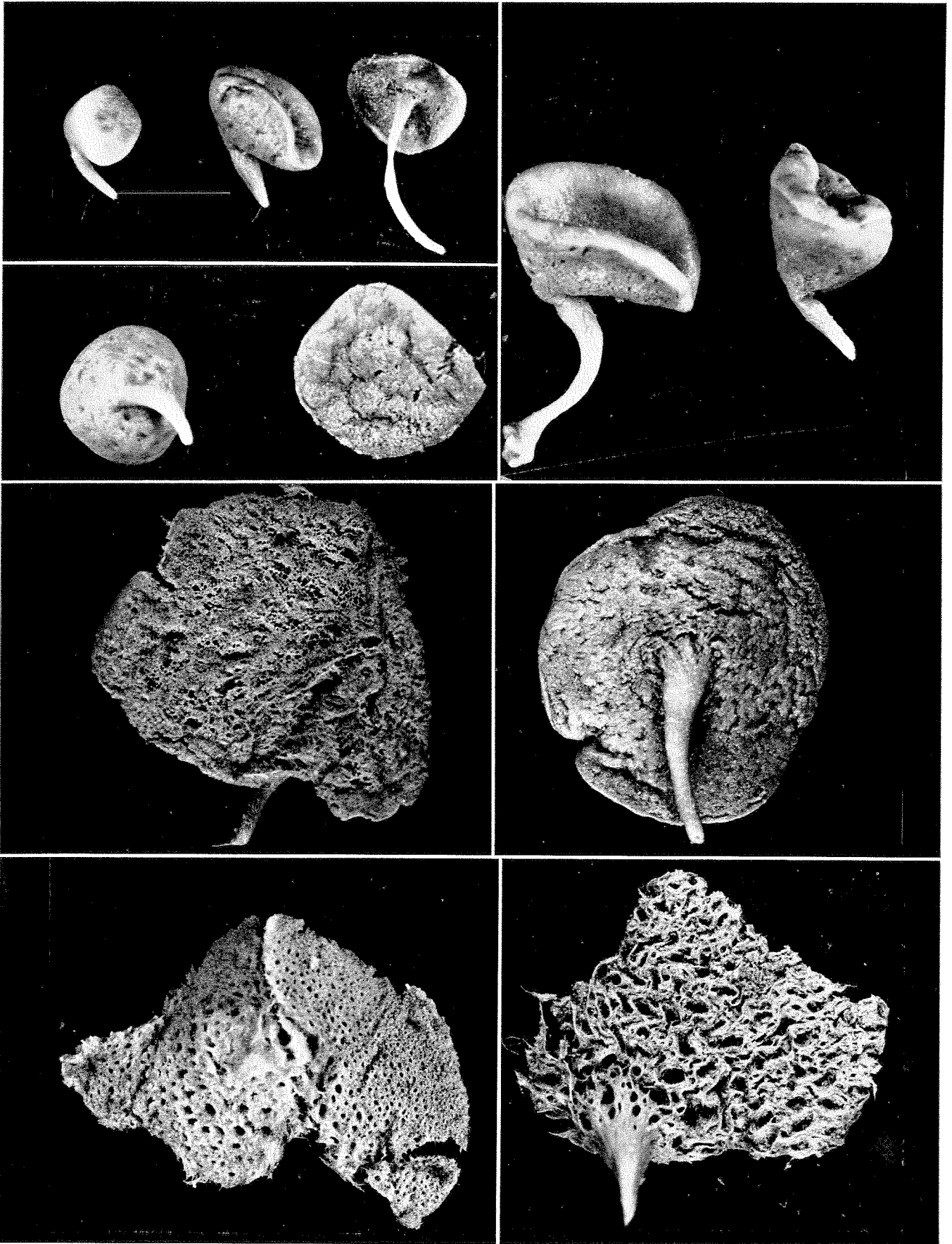
Pheronema barbulosclera n. sp.; x 1.2.



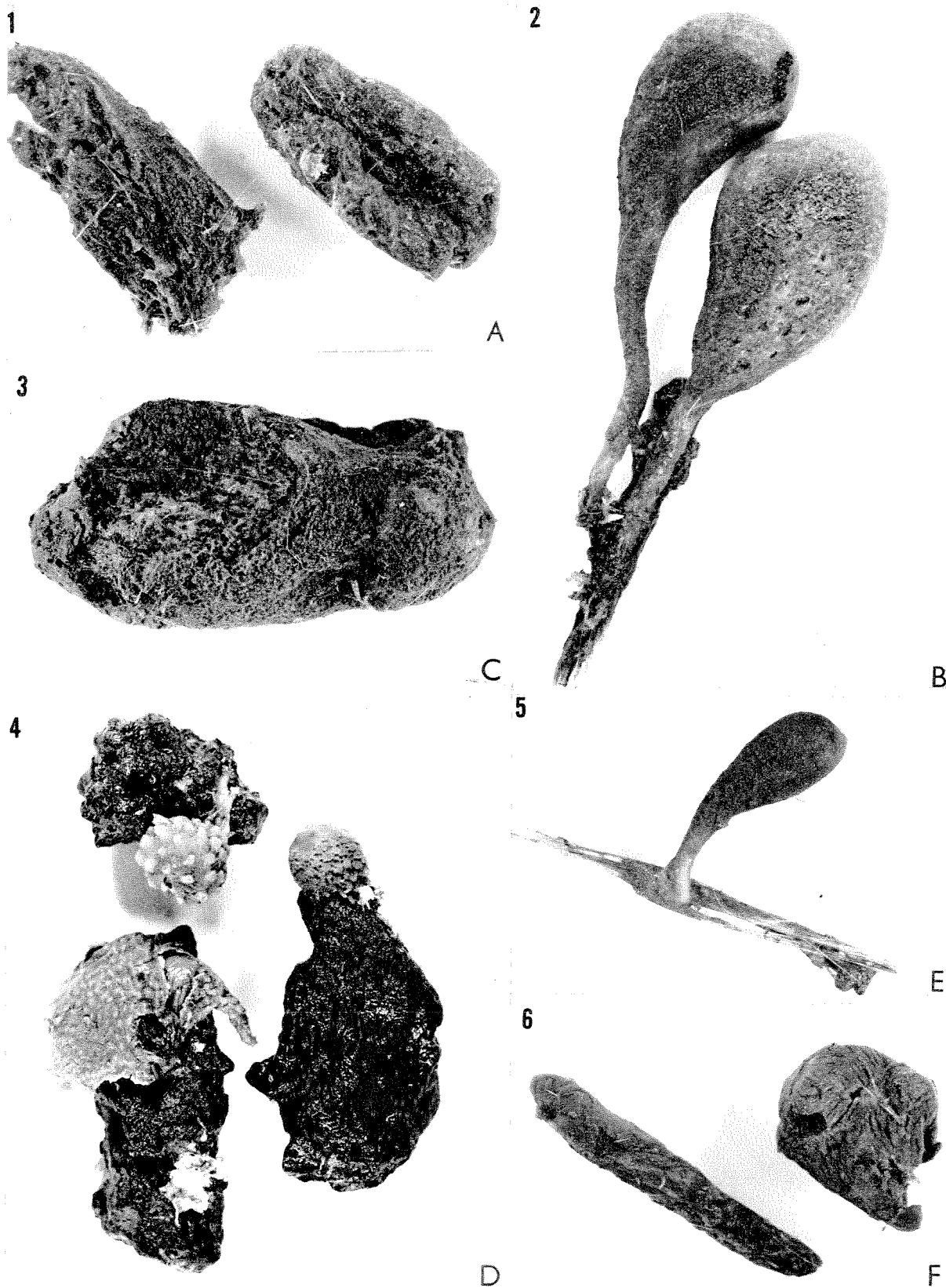
A, B. *Pheronema pilosum* n. sp.; x 1.

C. *Lophocalyx suluanus* Ijima; x 1.

D. *Euplectella timorensis* Ijima; x 0.7.



Caulophacus schulzei Wilson; x 1.



A. *Tylodesma microsigma* n. sp.; x 1.
B. *Rhizaxinella nuda* Wilson; x 1.
C. *Characella tuberosa* n. sp.; x 1.

D. *Tethya magna* Kirkp.; x 1.
E. *Rhizaxinella nuda* Wilson; x 1.
F. *Latrunculia palmata* n. sp.; x 1.



A, B. *Cyliconema curvisclera* n. sp.; x 0.8.
C. *Oonema bianchoratum* (Wilson); x 1.

D. *Corynonema eupinnulum* n. sp.; x 1.
E, F. *Pteronema globus* (Schulze); x 0.6.