

RESEARCH ARTICLE

# Marine Biodiversity in Juan Fernández and Desventuradas Islands, Chile: Global Endemism Hotspots

Alan M. Friedlander<sup>1,2,3\*</sup>, Enric Ballesteros<sup>4</sup>, Jennifer E. Caselle<sup>5</sup>, Carlos F. Gaymer<sup>3,6,7,8</sup>, Alvaro T. Palma<sup>9</sup>, Ignacio Petit<sup>6</sup>, Eduardo Varas<sup>9</sup>, Alex Muñoz Wilson<sup>10</sup>, Enric Sala<sup>1</sup>

**1** Pristine Seas, National Geographic Society, Washington, District of Columbia, United States of America, **2** Fisheries Ecology Research Lab, University of Hawaii, Honolulu, Hawaii, United States of America, **3** Millennium Nucleus for Ecology and Sustainable Management of Oceanic Islands (ESMOI), Coquimbo, Chile, **4** Centre d'Estudis Avançats (CEAB-CSIC), Blanes, Spain, **5** Marine Science Institute, University of California Santa Barbara, Santa Barbara, California, United States of America, **6** Universidad Católica del Norte, Coquimbo, Chile, **7** Centro de Estudios Avanzados en Zonas Áridas, Coquimbo, Chile, **8** Instituto de Ecología y Biodiversidad, Coquimbo, Chile, **9** FisisAqua, Santiago, Chile, **10** OCEANA, SA, Santiago, Chile

\* [alan.friedlander@hawaii.edu](mailto:alan.friedlander@hawaii.edu)



OPEN ACCESS

**Citation:** Friedlander AM, Ballesteros E, Caselle JE, Gaymer CF, Palma AT, Petit I, et al. (2016) Marine Biodiversity in Juan Fernández and Desventuradas Islands, Chile: Global Endemism Hotspots. PLoS ONE 11(1): e0145059. doi:10.1371/journal.pone.0145059

**Editor:** Christopher J Fulton, The Australian National University, AUSTRALIA

**Received:** August 15, 2015

**Accepted:** November 29, 2015

**Published:** January 6, 2016

**Copyright:** © 2016 Friedlander et al. This is an open access article distributed under the terms of the [Creative Commons Attribution License](https://creativecommons.org/licenses/by/4.0/), which permits unrestricted use, distribution, and reproduction in any medium, provided the original author and source are credited.

**Data Availability Statement:** Our data are available at Data Dryad. doi:10.5061/dryad.gr2c7.

**Funding:** ES received funding from Blancpain, Davidoff Cool Water and The National Geographic Society. Oceana provided funding to ATP. CFG was supported by Grant NC120030 from the Millennium Scientific Initiative. The funders had no role in study design, data collection and analysis, decision to publish, or preparation of the manuscript.

**Competing Interests:** AMF and ES are employed by the National Geographic Society. AMW is employed

## Abstract

The Juan Fernández and Desventuradas islands are among the few oceanic islands belonging to Chile. They possess a unique mix of tropical, subtropical, and temperate marine species, and although close to continental South America, elements of the biota have greater affinities with the central and south Pacific owing to the Humboldt Current, which creates a strong biogeographic barrier between these islands and the continent. The Juan Fernández Archipelago has ~700 people, with the major industry being the fishery for the endemic lobster, *Jasus frontalis*. The Desventuradas Islands are uninhabited except for a small Chilean military garrison on San Félix Island. We compared the marine biodiversity of these islands across multiple taxonomic groups. At San Ambrosio Island (SA), in Desventuradas, the laminarian kelp (*Eisenia cokeri*), which is limited to Desventuradas in Chile, accounted for >50% of the benthic cover at wave exposed areas, while more sheltered sites were dominated by sea urchin barrens. The benthos at Robinson Crusoe Island (RC), in the Juan Fernández Archipelago, comprised a diverse mix of macroalgae and invertebrates, a number of which are endemic to the region. The biomass of commercially targeted fishes was >2 times higher in remote sites around RC compared to sheltered locations closest to port, and overall biomass was 35% higher around SA compared to RC, likely reflecting fishing effects around RC. The number of endemic fish species was extremely high at both islands, with 87.5% of the species surveyed at RC and 72% at SA consisting of regional endemics. Remarkably, endemics accounted for 99% of the numerical abundance of fishes surveyed at RC and 96% at SA, which is the highest assemblage-level endemism known for any individual marine ecosystem on earth. Our results highlight the uniqueness and global significance of these biodiversity hotspots exposed to very different fishing pressures.

by Oceana. This does not alter the authors' adherence to all the PLOS ONE policies on sharing data and materials, as detailed online in the guide to authors.

## Introduction

In 1574, the Spanish explorer Juan Fernández was seeking a faster route between Callao, Perú and Valparaíso, Chile. By detouring west from the coast he managed to avoid the north-flowing Humboldt Current, and in the process discovered the uninhabited Juan Fernández and Desventuradas islands off the coast of what is now Chile [1]. These remote islands are among the few oceanic archipelagos along the west coast of South America, yet our scientific understanding of them is extremely limited [2–7]. The Juan Fernández Archipelago lies ~ 600 km west of Valparaíso, Chile and consists of three islands: Robinson Crusoe (also known as Isla Más a Tierra), Santa Clara, and Alejandro Selkirk (also known as Isla Más Afuera) [8–9]. Robinson Crusoe Island is best known from the novel by Daniel Defoe that bears its name, and is based on the true story of the Scottish sailor, Alexander Selkirk, who spent more than four years alone on the island before being rescued in 1709 [8]. These islands were once the domain of pirates and privateers, and later were of strategic importance to a number of nations [10]. Located 750 km north of the Juan Fernández Archipelago are the Desventuradas Islands, which are ~ 900 km west of Antofagasta, Chile, and consist of the islands of San Ambrosio and San Félix, along with several small islets [2].

Due to their extreme isolation, these islands are known to have a high degree of endemism in both their terrestrial and marine biota, as well as a unique mix of tropical, subtropical, and temperate marine species [7, 11–13]. Although relatively close to mainland South America, the Juan Fernández biogeographic province is considered a distinct ecoregion, with a strong southwest Pacific component to its marine fauna [14–15]. Taxonomy and biogeography of the coastal fishes of Desventuradas and Juan Fernández islands indicate a Western Pacific origin, and they therefore represent the easternmost extension of the Indo-West Pacific biogeographic region [13, 16]. Biogeographic affinity with the Tropical Eastern Pacific is almost negligible despite geographic proximity comparable to the central Pacific [17].

Endemic hotspots are vital to our understanding of speciation and the origins and maintenance of biodiversity, and as a result they have extremely high conservation value [18–20]. Marine centers of endemism predominate in places isolated by geography or oceanography. For example, isolated islands rich in endemics include Mauritius and La Reunion in the Indian Ocean, Hawaii, Easter Island, and the Marquesas in the Pacific, and St. Helena and Ascension Islands in the Atlantic [21–22]. The Juan Fernández Archipelago was designated as a national park by the government of Chile in 1935, and a UNESCO Biosphere Reserve in 1977. These islands are referred to as Chile's Galapagos, and like the Galapagos they are of volcanic origin (3–6 Mya) and are characterized by geographic isolation, high endemism, and charismatic fauna such as the Juan Fernandez fur seal (*Arctocephalus philippii*), Magellanic Penguins (*Spheniscus magellanicus*), and the only known breeding populations of two petrel species, Stejneger's Petrel (*Pterodroma longirostris*) and the Juan Fernandez Petrel (*Pterodroma externa*), which are both listed as vulnerable by IUCN [9]. De Filippi's Petrel (*Pterodroma defilippiana*) is also listed by IUCN as vulnerable and is only known to breed on the Desventuradas Islands, and possibly Juan Fernández [23–24].

The fishery for the endemic lobster (*Jasus frontalis*), which has been locally exploited since 1893 [25], is the main source of economic revenue to the local economy of Juan Fernández, and although the abundance and distribution of this species has declined over time, co-management of the fishery has resulted in relatively sustainable catches in recent years [26–27]. An informal management system exists whereby trap location is governed by a complex, highly structured system with high compliance [28]. A number of nearshore fish species are targeted as bait for the lobster fishery, as well as for local consumption [29–30]. On a regular basis fishermen from Juan Fernández seasonally travel to Desventuradas Islands to catch lobsters [2, 29].

The objectives of this research were to compare the nearshore marine biodiversity of Juan Fernández and Desventuradas islands, assess their importance for global marine biodiversity, and assess how contrasting fishing pressure may affect marine ecosystems, even in remote locations.

## Materials and Methods

### Ethics statement

Data were collected by all authors in collaborative partnerships. Non-invasive research was conducted, which included photographs and visual estimates described in the methods. The Chilean Navy and the Undersecretary of Fishing granted all necessary permission and permits to conduct this research. No vertebrate sampling was conducted and therefore no approval was required by the Institutional Animal Care and Use Committee. [S1 Table](#) contains the GPS coordinates for all research sites.

### Locations

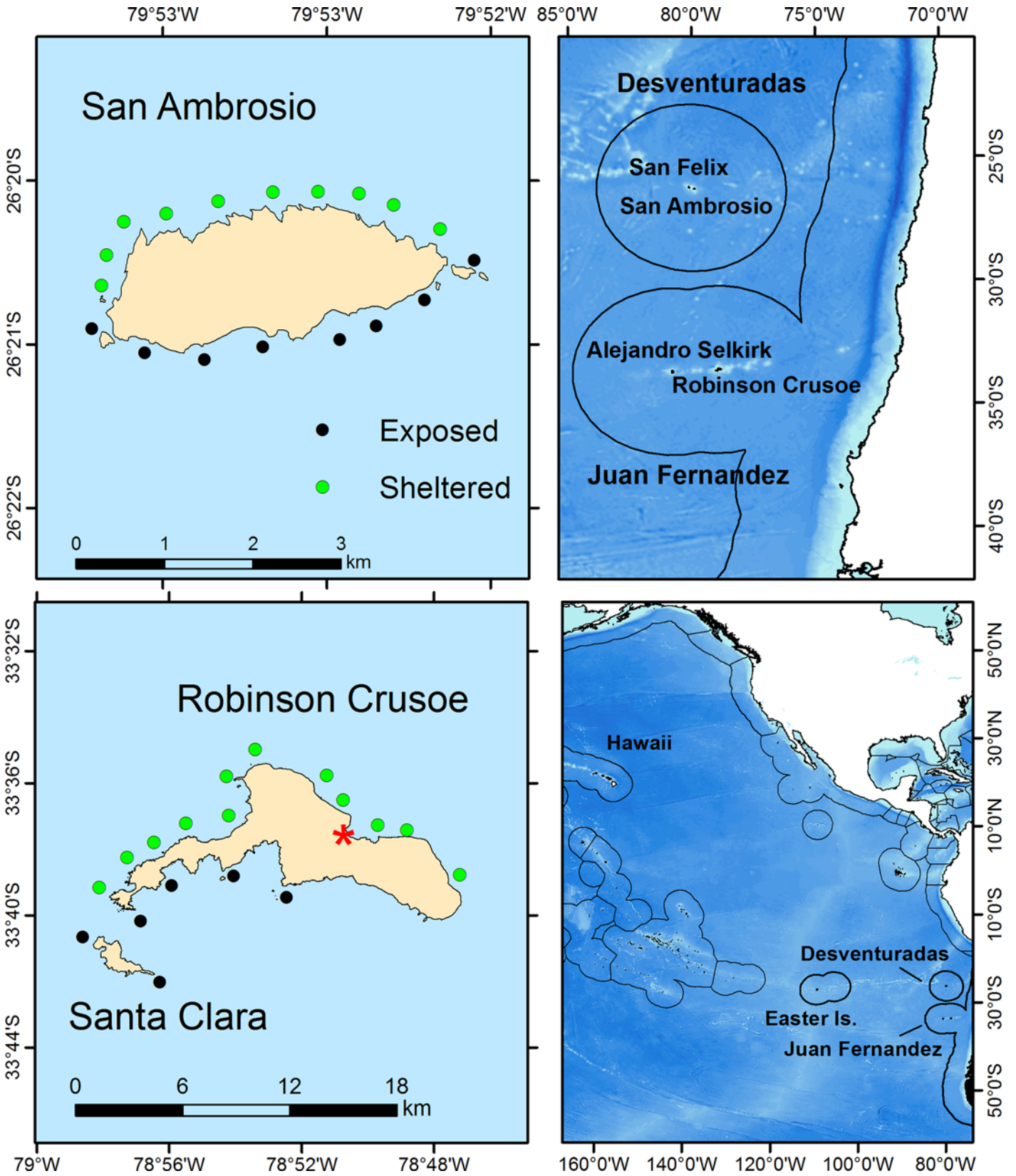
The Desventuradas Islands are part of a chain of seamounts and submarine volcanoes that extends westward along the Nazca Ridge and includes Salas y Gómez and Easter islands, while the Juan Fernández Archipelago lies on a much shorter chain of seamounts ~ 750 km to the south ([Fig 1](#)) [[31–33](#)]. Between 2004 and 2014, sea surface temperature averaged 19.0°C (range: 15.6–22.85) at Desventuradas and 17.1°C (range: 12.8–21.5) at Juan Fernández [[34](#)]. At Desventuradas there is a small Chilean military garrison on San Félix Island, while San Ambrosio is uninhabited. The vast major of the 700 inhabitants of the Juan Fernández Archipelago live in the town of San Juan Bautista, with a small resident population (~50 people) at Alejandro Selkirk Island, 170 km to the west. At Desventuradas, we surveyed San Ambrosio Island, and in the Juan Fernandez group we surveyed Robinson Crusoe and Santa Clara islands.

### Sample design

Using SCUBA, we sampled 19 sites around San Ambrosio (SA) in February 2013 and 18 sites around Robinson Crusoe and Santa Clara (RC) in January 2014 ([Fig 1](#), [S1 Table](#)). Due to their close proximity to one another, Robinson Crusoe and Santa Clara were subsequently grouped and are collectively referred to as RC. At each site, surveys of fishes and benthos were conducted at both 10 and 20 m depth strata for a total of 74 stations. Sites were selected to incorporate representative wave exposures and bottom characteristics. The prevailing wind and swell are from the southwest, resulting in markedly different conditions on the north (sheltered) and south (exposed) shores of both islands.

**Benthos.** At each site we sampled five 10 m-long transects parallel to the shoreline, at both 10 and 20 m depth. For algae, corals, and sessile macro-invertebrates we used a point intercept transect methodology to calculate percent benthic cover, recording the taxa found every 20 cm along a measuring tape. For mobile invertebrates, we counted individuals in five 50 x 50 cm quadrats randomly placed along each of the 10 m transects. Sessile snail worms (Vermetidae), which are more amenable to individual counts, were enumerated by quadrat counts at both locations and also as a percentage of cover at SA. They were excluded from all analyses of benthic cover since they were not included in cover estimates at RC due to logistical constraints.

**Fishes.** At each depth stratum within a site, one diver counted and estimated sizes for all fishes encountered within two (RC) or three (SA) fixed-length (25-m) belt transects whose widths differed depending on direction of swim. Transect bearings were set along isobaths within homogeneous habitats, with each transect separated by at least 5 m. Highly vagile,





**Fig 1. Sampling sites by wave exposure around Robinson Crusoe and Santa Clara islands in the Juan Fernández Archipelago and San Ambrosio in Desventuradas Islands.** The town of San Juan Bautista on Robinson Crusoe Island is denoted by the red asterisk. Location of the islands in relation to the coast of Chile are shown in the upper right panel. Black lines are Chile's Exclusive Economic Zones around the islands. The lower right panel shows the locations of these islands in the broader Pacific. Pacific basemaps are ETOPO1 from NOAA's National Geophysical Data Center [34].

doi:10.1371/journal.pone.0145059.g001

midwater schooling species (e.g., *Scorpius chilensis*, *Chromis meridian*, *Pseudocaranx chilensis*, *Caprodon longimanus*, *Callanthias platei*) were tallied within a 4-m wide strip surveyed on an initial "swim-out" as the transect line was laid (transect area = 100 m<sup>2</sup>). Small-bodied, less vagile, and more site-attached fishes were tallied within a 2-m wide strip surveyed on the return swim back along the laid transect line (transect area = 50 m<sup>2</sup>). Divers took care to never record individuals entering the field of view from behind in order to avoid counting fishes that tended to follow the divers.

Fishes were identified to species level in all cases [13]. Fish length was estimated to the nearest cm TL. Fishes were tallied by length and individual-specific lengths were converted to body weights. Numerical density (abundance) was expressed as number of individuals per m<sup>2</sup> and biomass density was expressed as tons per ha. The biomass of individual fishes was estimated using the allometric length-weight conversion:  $W = aTL^b$ , where parameters  $a$  and  $b$  are species-specific constants, TL is total length in cm, and  $W$  is weight in grams. Length-weight fitting parameters were obtained from FishBase [35]. The sum of all individual weights and numerical densities was used to estimate biomass density by species. Fishes were categorized into five trophic groups (piscivores, herbivores, benthic invertivores, benthic invertivores/piscivores, and planktivores) based on published literature. Species that consumed benthic invertebrates and fishes with a trophic number in Fishbase < 4.0 were classified as benthic invertivores/piscivores. Fishes that are consumed directly or used as bait in the lobster and crab fisheries were categorized as resource species (S2 Table).

**Statistical analysis.** Species diversity was calculated using the Shannon-Weaver Diversity Index [36]. Species density per 50 m transect and diversity of sessile benthic organisms were compared using a three-way analysis of variance (ANOVA) with island (RC, SA), exposure (exposed, sheltered), and depth (10 m, 20 m) as fixed factors. Unplanned multiple comparisons were tested using Tukey's Honestly Significant Difference (HSD) test ( $\alpha = 0.05$ ). Normality was tested using a Shapiro-Wilks  $W$  test ( $P < 0.05$ ) while a Bartlett's test ( $P < 0.05$ ) was used to examine homogeneity of variance. Numerical density of vermetid snails, the two dominant mobile invertebrates (*Centrostephanus rogersii* and *Mertensiothuria platei*), and fish assemblage characteristics (e.g., species density, number of individuals, biomass, and resource fish biomass) were all compared in a similar manner. Sessile benthic cover was arcsine-square root transformed, vermetid density were square root transformed, and fish numerical abundance, biomass, and biomass of resource and non-resource species were  $\ln(x+1)$  transformed prior to conducting the ANOVAs. Densities of the two dominant mobile invertebrates were rank transformed prior to analysis [37].

To describe the pattern of variation in community structure of the sessile benthic organisms and their relationship to environmental gradients, we performed direct gradient analysis (redundancy analysis: RDA) using the ordination program CANOCO version 5.0 [38]. The RDA introduces a series of explanatory (environmental) variables and resembles the model of multivariate multiple regression, allowing us to determine what linear combinations of these environmental variables determine the gradients. Benthic groups that represented > 5% of sessile benthic cover (bare rock, Chlorophyta, erect coralline algae (ECA), *Eisenia cokeri*, Phaeophyceae, Porifera, Rhodophyta, Vermetidae) or > 5% of mobile invertebrate density (*Centrostephanus rogersii*, *Mertensiothuria platei*, *Parvulastra calcarata*) were included in this analysis. The environmental data matrix included the following variables: island (JF, SA),

exposure (exposed, sheltered), and depth (10 m, 20 m). To rank environmental variables in their importance for being associated with the structure of communities, we used a forward selection where the statistical significance of each variable was judged by a Monte-Carlo unrestricted permutation test with 499 permutations [39].

Fish trophic structure was tested for differences between islands using multivariate analysis of variance (MANOVA). Biomass data were 4<sup>th</sup> root transformed prior to analysis. The multivariate test statistic Pillai's Trace was used because it is robust to heterogeneity of variance and is less likely to involve type I errors than are comparable tests [40]. We performed univariate ANOVAs when the MANOVA was significant. Similarity of Percentages (SIMPER) was used to determine the living sessile benthic taxa, fish trophic groups, and fish species most responsible for the percentage dissimilarities between islands using Bray-Curtis similarity analysis of hierarchical agglomerative group average clustering [41]. Values in the results are means and one standard deviation of the mean unless otherwise stated.

## Results

### Benthic

**Sessile benthic cover.** Species density of sessile benthic organisms per 50 m transect was higher at RC ( $\bar{X} = 12.3 \pm 3.5$ ) compared to SA ( $\bar{X} = 8.9 \pm 4.2$ ). However there was a significant interaction between island and exposures, with sheltered locations at SA having lower species density compared to the other three island x exposure combinations (Table 1A). Species diversity was significantly higher at RC ( $\bar{X} = 1.91 \pm 0.34$ ) compared to SA ( $\bar{X} = 1.14 \pm 0.57$ ) (Table 1B).

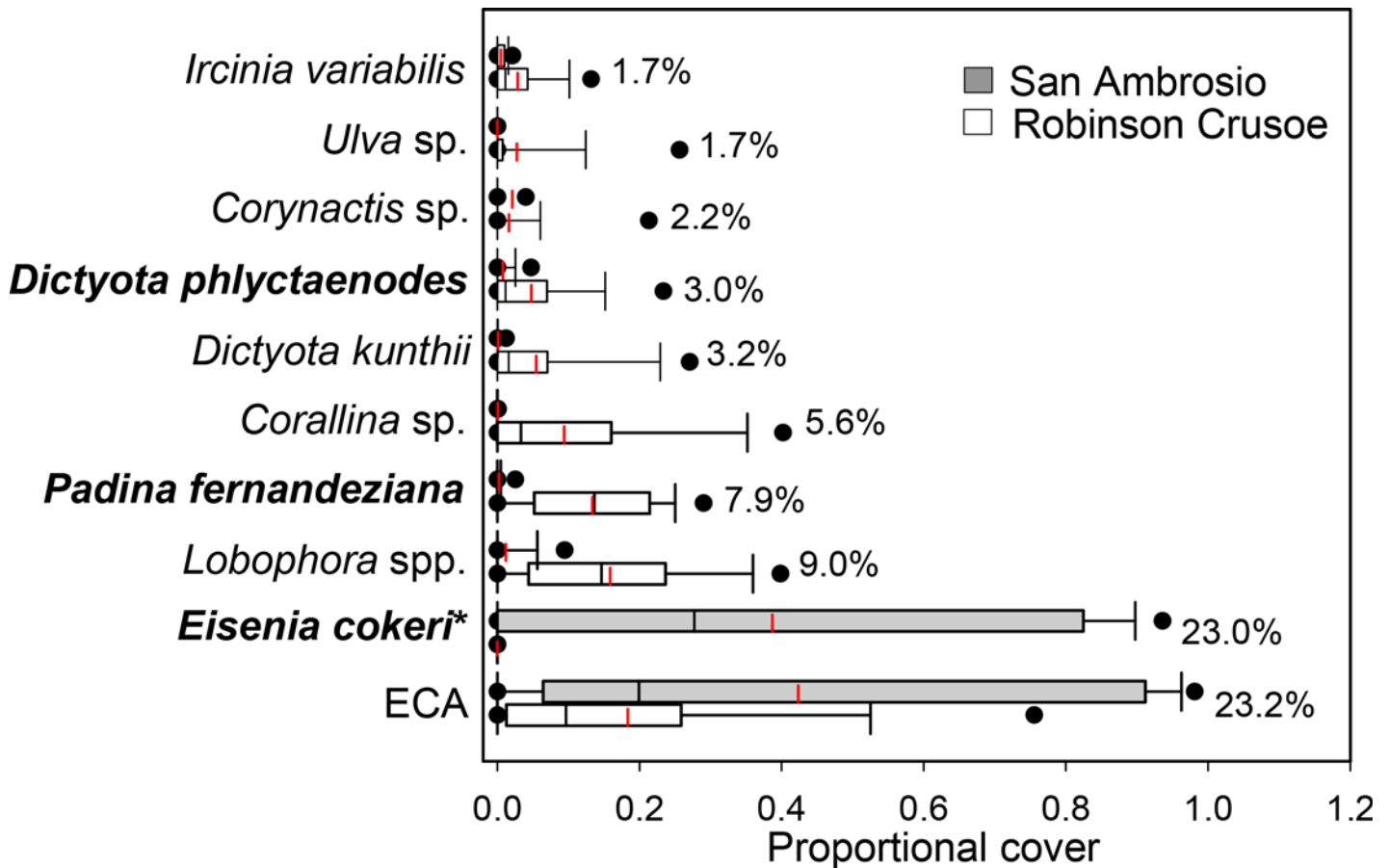
Average dissimilarity in living sessile benthic cover between islands (for depth and exposure combined) was 86.8% based on SIMPER analysis (Fig 2). Encrusting coralline algae was the most abundant living sessile benthic taxa at both islands, but cover was 2.3 times higher at SA compared to RC, providing the greatest dissimilarity between islands (23.2%). The kelp *Eisenia cokeri*, which was common on the wave exposed side of SA but was not present at RC, and is only known from Desventuradas Islands in Chile, contributed an additional 23.0% of the dissimilarity between islands. In contrast, RC was dominated by brown algae such as *Lobophora*

**Table 1. Comparison of species density and diversity per 50 m transect of sessile benthic cover between islands, exposures, and depth strata.**

A. Species density	F	P	Multiple Comparison
Island	2.31	0.024	RC > SA
Exposure	1.81	0.074	
Depth	1.16	0.251	
Island x Exposure	2.45	0.017	RC She = SA Exp = RC Pro > SA She
$F_{6,73} = 6.98, p < 0.001$			
B. Diversity			
Island	4.53	<0.001	RC > SA
Exposure	1.26	0.211	
Depth	0.89	0.375	
$F_{6,73} = 9.93, p < 0.001$			

Results of 3-way ANOVA with interactions. Unplanned multiple comparisons were tested using Tukey's HSD test ( $\alpha = 0.05$ ). JF—Juan Fernandez, SA—San Ambrosio, She—sheltered, Exp—exposed. Only significant interactions are shown in tables.

doi:10.1371/journal.pone.0145059.t001



**Fig 2. Living sessile taxa most responsible for the dissimilarity between Robinson Crusoe and San Ambrosio islands.** Box plots showing median (black line), mean (red dashed line), upper and lower quartiles, and 5th and 95th percentiles for each taxa. Numbers to the right of bars are average dissimilarities based on Similarity of Percentages (SIMPER) analysis. ECA—erect coralline algae. Endemic species are shown in bold. *Eisenia cokeri\**—Known from Desventuradas Islands and reported from coastal Peru.

doi:10.1371/journal.pone.0145059.g002

spp., the endemic *Padina fernandeziana*, and several species of *Dictyota* including the endemic *D. phlyctaenodes*.

Worm snails (Vermetidae—*Dendropoma* sp.) were the most abundant taxon on benthic quadrats with  $21.1 (\pm 20.4)$  individuals  $m^{-2}$  at SA and nearly twice that at RC ( $40.7 \pm 33.9 m^{-2}$ ) (Table 2A). They were nearly four times more abundant at sheltered sites ( $\bar{X} = 43.9 \pm 29.8$ ) compared to wave exposed areas ( $\bar{X} = 11.1 \pm 13.5$ ). Benthic cover of vermetids at SA was 3.6% ( $\pm 4.0$ ), therefore based on the ratio of numerical abundance between the two islands, we estimate benthic cover of vermetids at RC to be ~ 6.9%.

**Mobile benthic invertebrates.** The sea urchin *Centrostephanus rodgersii* was the most abundant mobile macroinvertebrate at SA ( $1.5 m^{-2} \pm 1.5$ ), accounting for 88% of the total abundance of mobile invertebrates at this island. Its density was five times lower at RC ( $0.3 m^{-2} \pm 0.5$ ), where it only accounted for 29% of mobile macroinvertebrate abundance. Abundance of *C. rodgersii* was 77% higher at sheltered ( $3.59 m^{-2} \pm 2.08$ ) compared to exposed sites ( $2.00 m^{-2} \pm 1.91$ ), and similarly higher at deeper ( $1.17 m^{-2} \pm 1.49$ ) relative to shallow sites ( $0.66 m^{-2} \pm 1.07$ , Table 2B). There was a significant interaction between island and depth, with the sheltered sites at SA having significantly higher densities of *C. rodgersii* than the other island x exposure combinations.

**Table 2. Comparison of abundance (no. m<sup>-2</sup>) of A. Worm snail (*Dendropoma* sp.), B. Black sea urchin (*Centrostephanus rodgersii*), and C. Sea cucumber (*Mertensiothuria platei*) between islands, exposures, and depth strata.**

A. <i>Dendropoma</i> sp.	F	P	Multiple Comparison
Island	2.57	0.012	RC > SA
Exposure	6.73	<0.001	She > Exp
Depth	0.59	0.557	
F <sub>6,73</sub> = 10.3, p < 0.001			
B. <i>Centrostephanus rodgersii</i>			
Island	5.46	<0.001	SA > RC
Exposure	4.55	<0.001	She > Exp
Depth	2.23	0.029	Deep > Shallow
Island x exposure	2.56	0.013	SA She > SA Exp = RC Exp = RC She
F <sub>6,73</sub> = 9.3, p < 0.001			
C. <i>Mertensiothuria platei</i>			
Island	0.68	0.501	
Exposure	3.14	0.002	Exp > She
Depth	0.66	0.512	
F <sub>6,73</sub> = 1.76, p < 0.111			

Results of 3-way ANOVA with interactions. *Dendropoma* sp. was square root transformed, while *C. rodgersii* and *M. platei* were rank transformed prior to analysis. Unplanned multiple comparisons were tested using Tukey's HSD test ( $\alpha = 0.05$ ). JF—Juan Fernandez, SA—San Ambrosio, She—sheltered, Exp—exposed. Only significant interactions are shown in tables.

doi:10.1371/journal.pone.0145059.t002

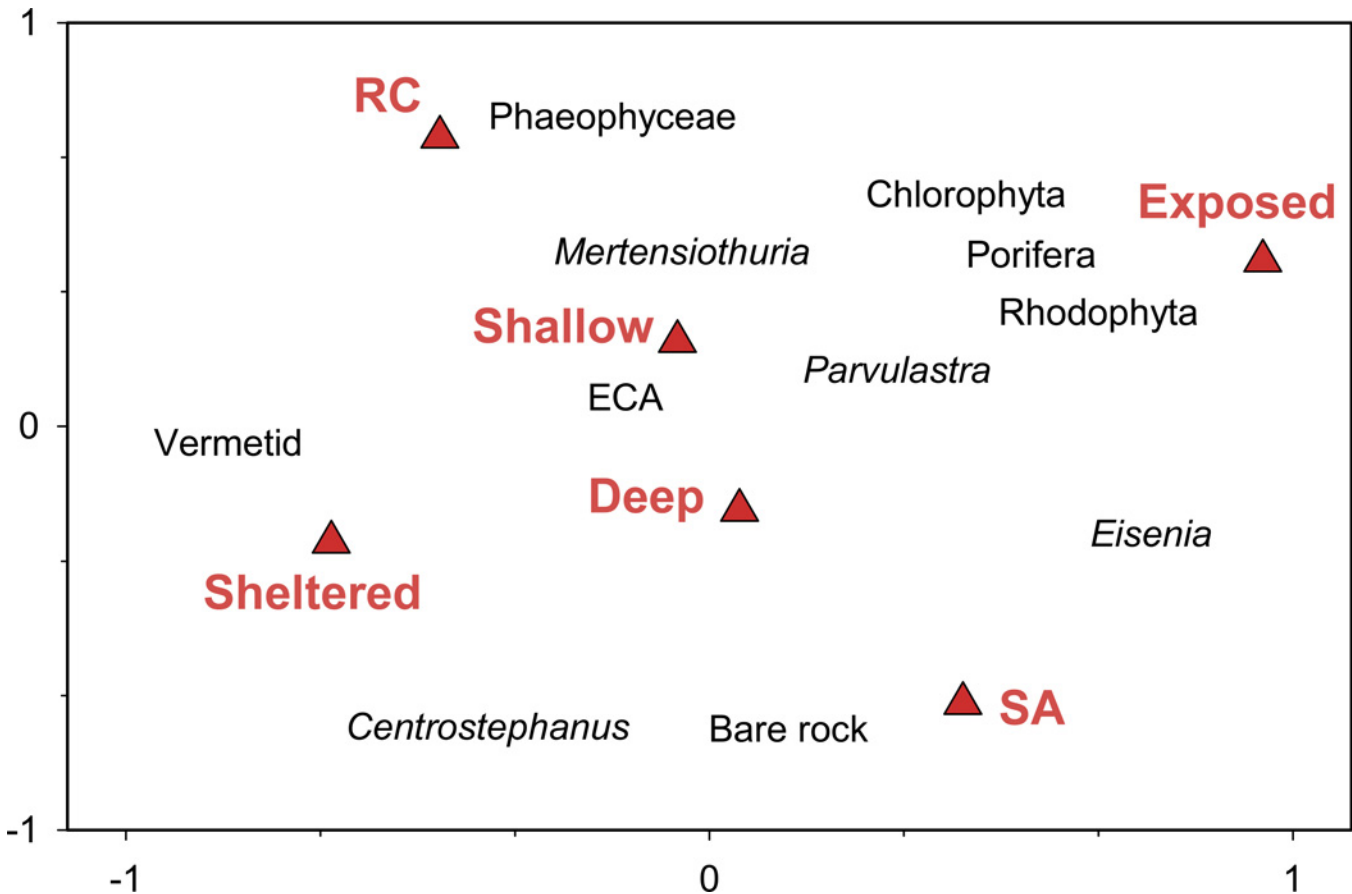
The sea cucumber *Mertensiothuria platei*, which is endemic to both island groups, was the most abundant mobile macroinvertebrate at RC, accounting for 46% of the total community (Table 2C). The density of this species was 2.7 times higher at RC compared with SA, where it accounted for 9% of the total macroinvertebrate abundance. It was significantly more abundant at exposed ( $0.52 \text{ m}^{-2} \pm 1.17$ ) vs. sheltered sites ( $0.14 \text{ m}^{-2} \pm 0.28$ ), and 4.8 times more abundant at shallow compared to deep sites, although this difference was not statistically significant due to high variability. Extreme values were observed only at the shallow depth stratum, meaning that spatial heterogeneity was restricted to this stratum. *Parvulastra calcarata* is a seastar endemic to the region that accounted for 20% of the macroinvertebrate abundance at RC, where it was five times more abundant than at SA, where it only accounted for 2% of the abundance.

**Benthic community comparisons.** Our data show strong separation in sessile benthic community structure between wave exposure and islands (Fig 3). The first two axes of the RDA biplot explained 43% of the variance in sessile cover and nearly 99% of the benthic-environment relationship (Table 3). The main factors involved in this ordination were wave exposure and island, which were orthogonal to one another in ordination space. Axis 1 separated wave exposures with the most influential response variable scores being *Eisenia cokeri*, which increased towards the exposed areas of SA, and vermetid worms, which increased towards sheltered areas. Axis 2 separated islands with brown algae (Phaeophyceae) in the direction of greater abundance at RC, and bare rock and the sea urchin *Centrostephanus* in the direction of higher prevalence at SA. Exposed areas were characterized by a mix of sponges (Porifera), green algae (Chlorophyta), and red algae (Rhodophyta).

## Fishes

**Fish assemblage characteristics.** A total of 30 species of fishes from 21 families were recorded from RC (25 sites) and SA (24 sites, S2). One new record, the kelpfish—*Chironemus*





**Fig 3. Biplot of results of redundancy analysis on dominant sessile and mobile benthic taxa and environmental data.** Data were squareroot transformed and centered prior to analysis. Statistical results are shown in [Table 2](#).

doi:10.1371/journal.pone.0145059.g003

*delfini*, previously known only from RC was observed at SA during our expedition in the tide pools on the island's west side.

Average fish species density on transects was low overall ( $\bar{x} = 8.9 \pm 2.0$ ), but significantly higher at SA compared with RC, higher at sheltered vs. exposed sites, and higher at deeper vs. shallow sites ([Table 4](#), [Fig 4](#)). Numerical abundance averaged 5.4 individuals  $m^{-2}$  ( $\pm 2.5$ ) overall and showed no difference among any factor. Biomass averaged 2.3 ( $\pm 1.4$ )  $t ha^{-1}$  and was not different among major factors although the interaction of exposure and depth was significant, with deep sheltered sites having significantly higher biomass than shallow sheltered sites.

**Table 3. A. Results of redundancy analysis (RDA) on square root transformed dominant sessile and mobile benthic taxa with environmental variables (e.g., island, wave exposure, and depth). B. Conditional effects of Monte-Carlo permutation results on the redundancy analysis (RDA).**

A. Statistic	Axis 1	Axis 2	Axis 3
Eigenvalues	0.30	0.13	0.01
Pseudo-canonical correlation	0.71	0.78	0.34
Explained variation (cumulative)	30.37	43.86	44.42
Explained fitted variation (cumulative)	68.37	98.75	100.00
B. Variable	Pseudo-F	P	% explained
Island	27.5	0.002	27.6
Exposure	15.3	0.003	15.3

doi:10.1371/journal.pone.0145059.t003

**Table 4. Comparison of fish assemblage metrics between islands, exposures, and depth strata.**

	F	P	Multiple Comparison
<b>A. Species density</b>			
Is	2.16	0.035	SA > RC
Exposure	3.64	<0.001	She > Exp
Depth	2.59	0.011	Deep > Shallow
<b>B. Numerical abundance (no. m<sup>-2</sup>)</b>			
Is	1.00	0.322	
Exposure	0.23	0.818	
Depth	0.46	0.649	
<b>C. Biomass (t ha<sup>-1</sup>)</b>			
Is	1.65	0.104	
Exposure	1.27	0.210	
Depth	1.43	0.157	
Exp. X depth	2.12	0.038	She.20 Exp.10 Exp.20 She.10
<b>D. Resource biomass (t ha<sup>-1</sup>)</b>			
Is	2.01	0.049	SA > RC
Exposure	2.57	0.012	Exp > She
Depth	1.64	0.106	

Results of 3-way ANOVA with interactions. Numerical abundance, total biomass, and resource biomass were  $\ln(x+1)$  transformed prior to statistical analyses. Unplanned multiple comparisons were tested using Tukey's HSD test ( $\alpha = 0.05$ ). JF—Juan Fernandez, SA—San Ambrosio, She—sheltered, Exp—exposed. Only significant interactions are shown in tables. Underlined factors are not significantly different ( $\alpha = 0.05$ ).

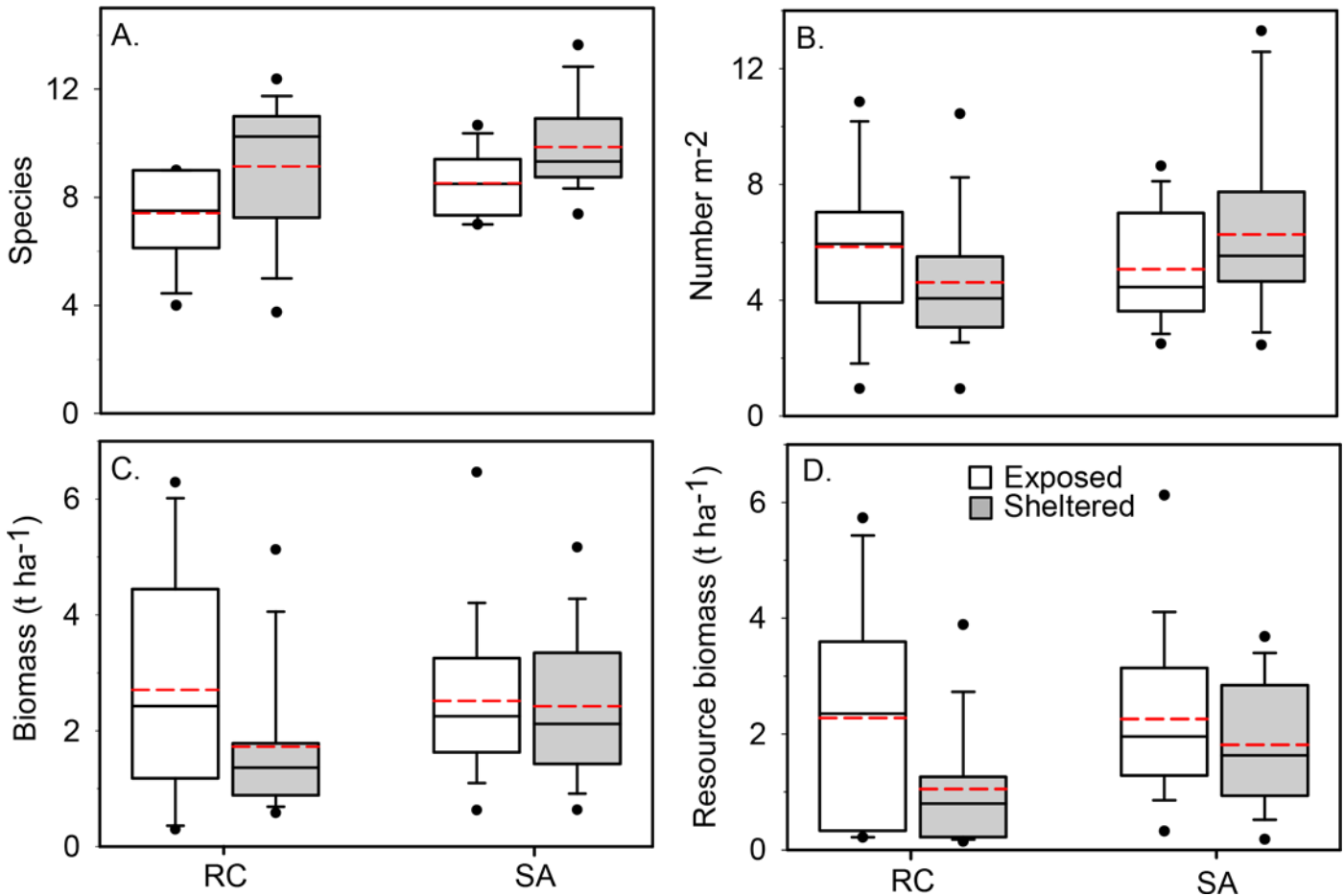
doi:10.1371/journal.pone.0145059.t004

Resource fish biomass was significantly greater at SA compared to RC by 39% and significantly greater at exposed vs. sheltered sites by 62% (Table 4, Fig 4). Within RC, resource fish biomass was > 2 times greater at the exposed, remote sites compared to the sheltered sites closer to the harbor ( $F_{1,35} = 2.33$ ,  $p = 0.026$ ). There was no significant difference in resource fish biomass between depth strata surveyed around RC ( $F_{1,35} = 0.82$ ,  $p = 0.42$ ). Non-resource fishes showed the opposite response, with 40% higher biomass at RC compared to SA ( $F_{1,67} = 2.79$ ,  $p = 0.007$ ), and 55% higher biomass in sheltered vs. exposed locations ( $F_{1,67} = 3.75$ ,  $p < 0.001$ ).

**Biodiversity and endemism.** There was a total number of 25 species of fishes recorded on transects at SA and 24 at RC (Table 5). The number of endemic species was extremely high with 87.5% of the species at RC and 72% at SA consisting of regional (Juan Fernandez and Desventuradas) endemics. Endemics accounted for nearly 99% of the numerical abundance of all fishes observed on transects at RC and 96% at SA. Nearly 88% of fish biomass at RC and 75% at SA consisted of these regional endemics.

**Fish trophic structure.** Fish trophic structure was significantly different between SA and RC (Pillai's Trace,  $F_{4,69} = 36.4$ ,  $p < 0.001$ ). Univariate ANOVAs were performed on each trophic group following the significant results of the MANOVA. Planktivore biomass was 2.3 times higher at SA compared to RC ( $F_{1,74} = 22.6$ ,  $p < 0.001$ ) and accounted for nearly 40% of the dissimilarity between islands (SIMPER Analysis). This trophic group comprised 54% of total biomass at SA but only 29% at RC (Fig 5). Biomass of benthic invertivores was significantly different between islands ( $F_{1,74} = 132.4$ ,  $p < 0.001$ ) and this trophic group combined with benthic invertivores/piscivores together accounted for 47% of the biomass at RC but only 20% at SA.

**Fish species composition.** Fish species composition between SA and RC were distinct (average dissimilarity for biomass = 65.6%, SIMPER Analysis). The Chilean sweeper (*Scorpius chilensis*) was the most important species by weight at both locations, accounting for 32% of



**Fig 4. Comparisons of fish assemblage structure between Robinson Crusoe (RC) and San Ambrosio (SA).** Box plots showing median (black line), mean (red dashed line), upper and lower quartiles, and 5th and 95th percentiles for each assemblage characteristic. (A) Species density (number of species per transect), (B) Number of individuals (number m<sup>-2</sup>), (C) Biomass (t ha<sup>-1</sup>), and (D) Resource fish biomass (t ha<sup>-1</sup>). See Table 4 for statistical results.

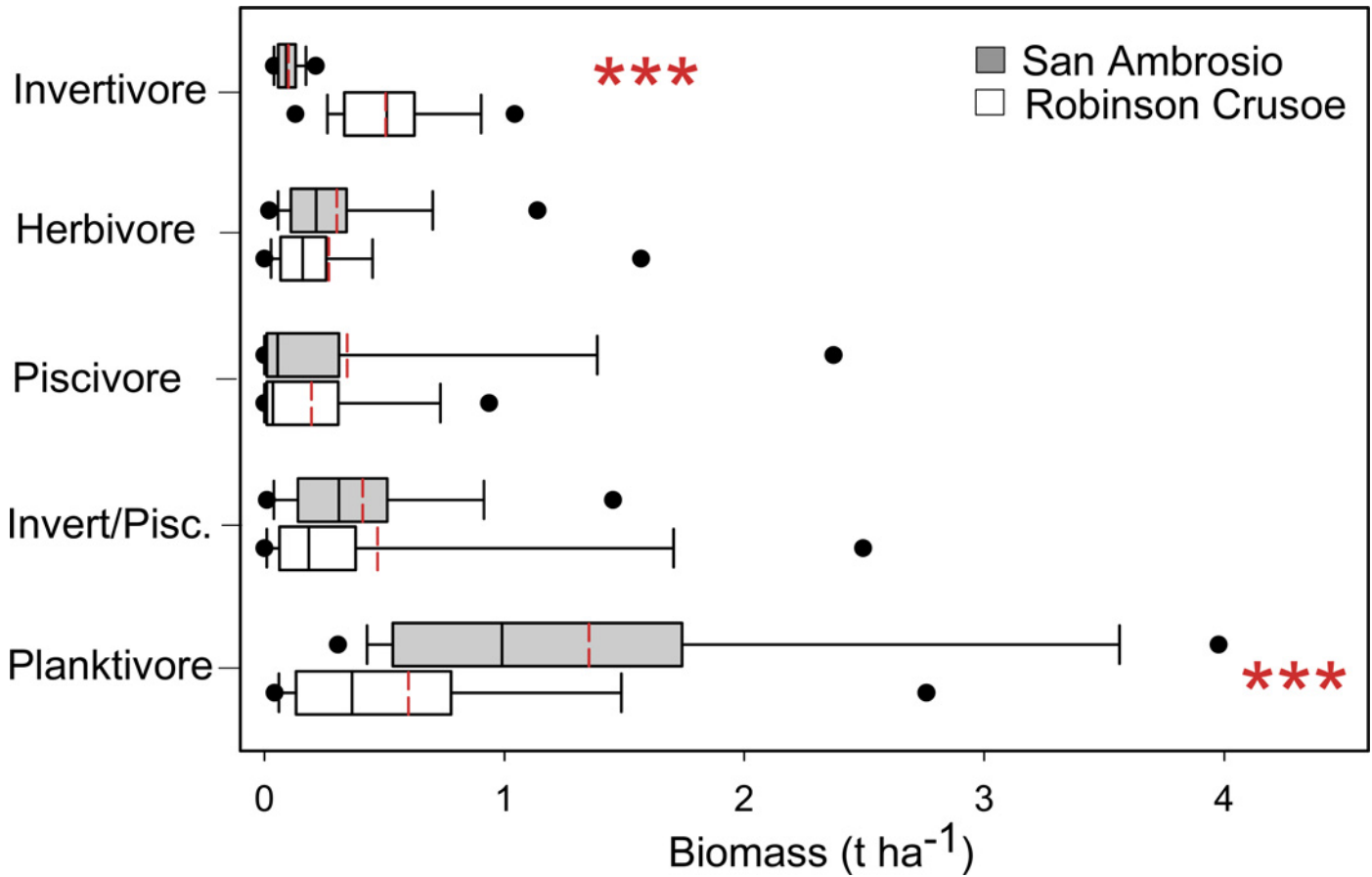
doi:10.1371/journal.pone.0145059.g004

**Table 5. Affinities of fish species observed on quantitative transects around Robinson Crusoe (RC) and San Ambrosio (SA) islands.**

Affinity	Species observed on transects		Numerical abundance (number m <sup>2</sup> )	
	RC	SA	RC	SA
Desventuradas & Juan Fernandez	21	18	5.01 (2.41)	4.57 (1.85)
Desventuradas only		1		1.11 (1.39)
Juan Fernandez only	1		0.01 (0.04)	
Circumtropical	1	1	<0.01 (0.10)	0.02 (0.04)
South Pacific	1	2	0.01 (0.01)	0.01 (0.1)
Desventuradas & Easter Island		1		<0.01 (0.01)
Indo-Pacific		1		<0.01 (<0.1)
Coastal Chile		1		<0.01 (<0.1)
<b>Total</b>	<b>24</b>	<b>25</b>		

Values in parentheses are SD. Species ordered by numerical abundance.

doi:10.1371/journal.pone.0145059.t005



**Fig 5. Comparisons of fish trophic groups between Robinson Crusoe and San Ambrosio islands.** Box plots showing median (black line), mean (red dashed line), upper and lower quartiles, and 5<sup>th</sup> and 95<sup>th</sup> percentiles. Values are biomass (t ha<sup>-1</sup>). Invert/Pisc.—invertivores/piscivores. Statistical results of 1-way ANOVAs testing island differences. Trophic groups with \*\*\* are significantly different at p < 0.001.

doi:10.1371/journal.pone.0145059.g005

total fish biomass at SA and 24% at RC, although absolute biomass was 63% higher at SA, which accounted for 22% of the dissimilarity between assemblages (Table 6). The Juan

**Table 6. Fish species most responsible for the dissimilarity between Robinson Crusoe (RC) and San Ambrosio (SA) islands based on Similarity of Percentages (SIMPER) analysis.**

Species	Biomass—t ha <sup>-1</sup> (% total)		Av. Diss (± sd)	Contrib. %
	SA	RC		
<i>Scorpius chilensis</i>	0.80 (31.9)	0.49 (24.1)	14.5 (1.6)	22.13
<i>Pseudocaranx chilensis</i>	0.34 (13.6)	0.42 (20.6)	9.0 (0.1)	13.66
<i>Seriola lalandi</i>	0.33 (13.2)	0.12 (5.9)	7.3 (0.8)	11.12
<i>Girella albostrata</i>	0.25 (10.0)	0.17 (8.3)	6.2 (1.0)	9.48
<i>Malapterus reticulatus</i>	0.01 (0.4)	0.24 (11.8)	5.7 (1.6)	8.67
<i>Caprodon longimanus</i>	0.23 (9.2)	0.09 (4.4)	5.4 (0.8)	8.21
<i>Chromis meridiana</i>	0.23 (9.2)	-	5.0 (1.1)	7.69
<i>Pseudolabrus gayi</i>	0.06 (2.4)	0.23 (11.3)	4.1 (1.2)	6.29
<i>Callanthias platei</i>	0.08 (3.2)	-	1.7 (0.6)	2.53
<i>Gymnothorax porphyreus</i>	0.06 (2.4)	0.04 (2.0)	1.5 (0.8)	2.27

Values for islands are biomass (t ha<sup>-1</sup>) with percentage of total in parentheses. Avg. Diss.—average dissimilarity with standard deviation in parentheses.

doi:10.1371/journal.pone.0145059.t006

Fernandez trevally (*Pseudocaranx chilensis*) was the next most important species by weight at both locations, accounting for an additional 21% of the total biomass at RC and 14% at SA. This species had 23% greater biomass at RC compared to SA and contributed 14% to the dissimilarity between these assemblages. Ranking third in overall weight at SA was the yellowtail Amberjack (*Seriola lalandi*), which comprised an additional 13% of total biomass around this island. Biomass of this highly prized species was 2.7 times higher at SA compared to RC, where it comprised 6% of the total biomass, ranking sixth for the island. Two small labrids, the reticulated wrasse (*Malapterus reticulatus*), and Gay's wrasse (*Pseudolabrus gayi*) together accounted for 23% of the total biomass at RC where they ranked third and fourth in total weight, respectively.

## Discussion

The Desventuradas and Juan Fernández islands possess unique marine ecosystems that consist of a mix of tropical, subtropical, and temperate species. The major difference observed in the benthic communities between San Ambrosio (SA) in Desventuradas and Robinson Crusoe (RC) in Juan Fernández is the presence of the kelp *Eisenia cokeri* at SA, where it forms dense beds at exposed areas of the island. This species is only known from Desventuradas Islands (with a limited distribution along the coast of Perú), and constitutes some of the lowest latitude insular kelp communities in the entire Pacific [42–43]. This single species creates a unique habitat that provides refuges, feeding, and nursery grounds for a wide range of benthic species, and also appears to be a critical nursery habitat for several pelagic species including the endemic Juan Fernández jack (*Pseudocaranx chilensis*) (Pers. Obs.). This fish species is an important food fish and bait resource for Juan Fernández fishermen but no subadults were observed during our surveys at RC. This lack of subadult jacks around RC may mean that: (1) recruitment is very episodic, as is common in many isolated locations; or (2) recruitment of jacks occurs in a habitat that we did not encounter. These hypotheses are not mutually exclusive and further research will be required to answer this question.

The benthic community at RC was more diverse compared to SA and this may partially be explained by the larger area of the island, more diverse habitats, and greater protection from large waves. At RC island, however, there is a complete absence of the kelp *Eisenia cokeri*. The dominance of sea urchin barrens at sheltered sites around SA was surprising since this habitat is usually associated with the loss of keystone species and trophic cascades in other areas of the world [44–45]. Urchin barrens may be formed during episodic population explosions of these organisms, as has been reported from other isolated islands in the Pacific [46]. Given the nearly pristine condition at SA and the numerous lobsters observed on our submersible surveys, these urchin barrens may represent a natural state and may contribute to the lower benthic diversity observed at SA compared to RC.

Lord Howe Island in the southwest Pacific is also an isolated, endemism hotspot with a number of similarities to Desventuradas and Juan Fernández [47–48]. Lord Howe possesses a mix of tropical, subtropical, and temperate species owing to its location at the boundary between the Coral and Tasman seas, with distinctive coral reef and macroalgal communities that are strongly influenced by wave exposure [49]. Barrens of the sea urchin *C. rodgersii* have also been reported from Lord Howe [49], and it has been suggested that formation of these barrens can be facilitated by increases in water temperature, which can stress native communities and contribute to larval dispersal [50–51]. Increases in ocean temperatures around Desventuradas could affect the resilience of the *Eisenia* kelp beds, making them more susceptible to disturbance and predation by sea urchins, as has been shown elsewhere [52].

Although these islands are close to mainland Chile (~500 mi), the cold, nutrient-rich waters of the Humboldt Current act as an effective barrier that separates the marine life found at these



islands from the South American coast. The most abundant mobile macroinvertebrate in our surveys was *Centrostephanus rogersii*, whose distribution includes eastern Australia and New Zealand, but not coastal South America [53]. Similarly, fishes found at these islands have a great affinity with the central Pacific than coastal Chile [13–14]. The juxtaposition of these tropical and sub-tropical species with kelp beds and fur seals, which are more typical of temperate ecosystems, creates a very distinctive ecological setting.

Endemics comprised 72% of the total number of fish species observed on transects at SA and 87.5% of the species at RC. More remarkable is the fact that nearly 99% of the numerical abundance of all fishes observed on transects at RC and 96% at SA are endemic to these islands only. The total number of coastal fish species known from the Desventuradas and Juan Fernández islands is 52, of which 32 (61.5%) are endemic [13]. These values are two to four times higher than those reported from other locations (e.g., Hawaii– 25%, [54], Easter Island– 21.7%, [55], Marquesas– 13.7%, [22]), and highlight the global significance and uniqueness of these biodiversity hotspots. The Desventuradas and Juan Fernández islands have extremely high levels of endemism, matched only by other isolated biogeographic provinces (e.g., Tropical Eastern Pacific, Antarctic [17, 56]). However the much smaller geographic range of these islands makes them strikingly unique globally.

The near absolute dominance of endemics in the fish assemblages at SA and RC is without precedent, and is possibly explained by their extreme geographic and oceanographic isolation. Endemic reef fishes are often associated with isolated islands, where they may have evolved traits that generally are associated with high local abundance [57–59]. The high abundance of marine endemic species may buffer them from low genetic diversity and stochastic processes, such as high recruitment and climatological variability [59]. Despite their high adaptive capacity, most of the recorded extinctions in the marine environment have been those species with small range sizes [60]. A recent analysis of global reef fish assemblages found that, among all locations examined, functional sensitivity (i.e. the proportion of functional groups with only a single species present) was highest in the Juan Fernández Archipelago [61], thus emphasizing the vulnerability of these islands.

The marine flora of the Juan Fernández Islands exhibits high endemism (~30%), but also a number of species with peculiar affinities that include the southern tip of South America, Southern Australia, New Zealand, and several sub-Antarctic islands [62]. Some common taxa such as certain brown algal taxa reported here as *Lobophora* spp. are still undescribed, despite their prevalence in the ecosystem [63]. Despite the relatively close proximity of the islands, the marine flora of Easter Island is more similar to the central and western Pacific than to Juan Fernández. This is consistent with predictions of limited species exchange across the northward flow of the Chile-Perú current system [62, 64–65], therefore accounting for the isolation and high levels of endemism but also connectivity with distant locations. Similarly, the marine flora of Desventuradas has a strong affinity with the Juan Fernández Islands and limited overlap with species found on the continent [66–67]. In addition to the marine flora, the endemic sea cucumber, *Mertensiothuria platei*, and sea star, *Parvulastra calcarata*, were important components of the benthos, comprising > 66% of the mobile macroinvertebrate abundance at RC.

Fish biomass at both locations was large compared to many locations throughout the Pacific [68–69]. However, resource fish biomass was 39% higher around SA compared to RC, and higher at exposed sites at RC compared to sheltered sites closer to the port, which possibly suggest the effects of fishing (for bait and human consumption) around RC. Although geography (productivity, temperature) and the presence of 120,000 fur seals at RC may contribute to these observed differences, the contrasts in biomass of resource and non-resource fishes between islands and around RC likely indicates selective fishing. In fact, some of the highest fish biomass observed around Robinson Crusoe and Santa Catalina islands were adjacent to the largest

seal colonies on these islands [70]. More than 90% of the diet of the Juan Fernández fur seal consists of cephalopods, along with midwater (Myctophidae) and epipelagic (Scomberesocidae) fishes [71], so seals likely have minimal impact on the nearshore fish fauna. Despite recent advances towards a sustainable lobster fishery within the Juan Fernández Archipelago, a diverse assemblage of fishes are increasingly caught as bait for this fishery [27, 30], emphasizing the need for broader resource management.

## Conclusions

This distinctive mix of tropical, sub-tropical, and temperate species makes these islands extremely unique. The levels of endemism in the fish assemblages are unprecedented and the benthic community is dominated by species that are either endemic, or possess distribution patterns and affinities that are novel for this region. These islands share a number of unique ecological features but different levels of human influence, and therefore offer us a valuable perspective on how remote oceanic marine ecosystems function and how best to manage them. On October 5, 2015, the Chilean Government announced the creation of the Nazca-Desventuradas Marine Park, which encompasses ~ 297,518 km<sup>2</sup> around San Ambrosio and San Félix islands, making it the largest fully protected marine reserve in the Americas. In 2014, Chile created the Juan Fernández Multi-Use Marine Protected Area, covering over 12,000 km<sup>2</sup> of the archipelago. This study highlights the uniqueness of the marine life at Juan Fernández and Desventuradas islands and the new management protection will greatly aid in the conservation of these globally important endemic hotspots

## Supporting Information

**S1 Table. Locations surveys during expeditions to San Ambrosio Island in the Desventuradas islands in February 2013 and Robinson Crusoe and Santa Clara islands in the Juan Fernández islands in January 2014.**

(DOCX)

**S2 Table. Fishes observed around San Ambrosio Island and Robinson Crusoe and Santa Clara islands.** Resource species are those consumed directly or used as bait in the lobster and crab fisheries.

(DOCX)

## Acknowledgments

We wish to thank the Chilean Navy and the Undersecretary of Fishing for research permits, and Commander Rodrigo Andrés for his wealth of knowledge of these islands. We are indebted to Avi Klapfer and the crew of the MV Argo for their outstanding work before and during the expedition to the Desventuradas Islands. Marcelo Rossi and the crew at Refugio Nautico provided incredible support during our work around Robinson Crusoe Island.

## Author Contributions

Conceived and designed the experiments: AMF EB JEC CFG ATP IP EV AMW ES. Performed the experiments: AMF EB JEC CFG ATP IP EV. Analyzed the data: AMF EB JEC CFG ATP IP EV. Contributed reagents/materials/analysis tools: AMF EB JEC CFG ATP IP EV AMW ES. Wrote the paper: AMF EB JEC CFG ATP IP EV AMW ES.

## References

1. Medina JT. El Piloto Juan Fernández, descubridor de las islas que llevan su nombre, y Juan Jufreé, armador de la expedición que hizo en busca de otras en el Mar del Sur. Estudio histórico. Santiago de Chile: Imprenta elzeviriana; 1918.
2. Bahamonde N. San Félix y San Ambrosio, las islas llamadas Desventuradas In: Castilla JC, editor. *Islas Oceánicas Chilenas: Conocimiento científico y necesidades de investigaciones*. Santiago: Universidad Católica de Chile; 1987. pp. 85–100.
3. Castilla JC. *Islas oceánicas Chilenas: conocimiento científico y necesidades de investigaciones*. Santiago: Universidad Católica de Chile; 1987.
4. Fernández M, Hormazábal S. Overview of recent advances in oceanographic, ecological and fisheries research on oceanic islands in the southeastern Pacific Ocean. *Lat Am J Aquat Res*. 2014; 42: 666–672.
5. Rodríguez-Ruiz MC, Andreu-Cazenave M, Ruz CS, Ruano-Chamorro C, Ramírez F, González C, et al. Initial assessment of coastal benthic communities in the Marine Parks at Robinson Crusoe Island. *Lat Am J Aquat Res*. (2014); 42: 918–936.
6. Pérez-Matus A, Ramírez F, Eddy TD, Cole R. Subtidal reef fish and macrobenthic community structure at the temperate Juan Fernandez Archipelago, Chile. *Lat Am J Aquat Res*. 2014; 42: 814–826.
7. Ramírez F, Pérez-Matus A, Eddy TD, Landaeta MF. Trophic ecology of abundant reef fish in a remote oceanic island: coupling diet and feeding morphology at the Juan Fernandez Archipelago, Chile. *J Mar Biol Assoc UK*. 2013; 93: 1457–1469.
8. Tulke H. La Isla de Juan Fernández y sus problemas. *Scientia*. 1954; 21: 140–165.
9. Castilla JC, Oliva D. *Islas Oceánicas Chilenas: Aspectos descriptivos y potencialidades*. In: Castilla JC, editor. *Islas Oceánicas chilenas. Conocimiento Científico y necesidades de investigación*. Santiago: Universidad Católica de Chile; 1987. pp. 15–36.
10. Anderson AJ, Haberle S, Rojas G, Seelenfreund A, Smith I, Worthy T. An archaeological exploration of Robinson Crusoe Island, Juan Fernandez Archipelago, Chile. In: Holdaway S, Brown D, editors. *Fifty years in the field: essays in honour and celebration of Richard Shutler Jr's archaeological career*. Auckland: New Zealand Archaeological Association; 2002. pp 239–249.
11. Sepúlveda JI. Peces de las islas oceánicas chilenas. In: Castilla JC, editor. *Islas Oceánicas chilenas. Conocimiento Científico y necesidades de investigación*. Santiago: Universidad Católica de Chile; 1987. pp. 225–245.
12. Haberle S Juan Fernández Islands. In: Gillespie RG, Clague DA, editors. *Encyclopedia of Islands*. Berkeley: University of California Press; 2009. pp 507–509.
13. Dyer BS, Westneat MW. Taxonomy and biogeography of the coastal fishes of Juan Fernández Archipelago and Desventuradas Islands, Chile. *Rev Biol Mar Oceanogr*. 2010; 45: 589–617.
14. Pequeño G, Sáez S. Los peces litorales del archipiélago de Juan Fernández (Chile): endemismo y relaciones ictiogeográficas. *Investig Mar*. 2000; 28: 27–37. <http://dx.doi.org/10.4067/S0717-71782000002800004>
15. Briggs JC, Bowen BW. A realignment of marine biogeographic provinces with particular reference to fish distributions. *J Biogeogr*. 2012; 39: 12–30.
16. Pequeño G, Lamilla J. The littoral fish assemblage of the Desventuradas Islands (Chile) has zoogeographical affinities with the Western Pacific. *Global Ecol Biogeogr*. 2000; 9: 431–437.
17. Robertson DR, Cramer KL. Shore fishes and biogeographic subdivisions of the Tropical Eastern Pacific. *Mar Ecol Prog Ser*. 2009; 380: 1–17.
18. Moritz C. Strategies to protect biological diversity and the evolutionary processes that sustain it. *Syst Biol*. 2002; 51: 238–254. PMID: [12028731](https://pubmed.ncbi.nlm.nih.gov/12028731/)
19. Bowen BW, Rocha LA, Toonen RJ, Karl SA. The origins of tropical marine biodiversity. *Trends Ecol Evolut* 2013; 28: 359–366.
20. Brooks TM, Mittermeier RA, da Fonseca GAB, Gerlach J, Hoffmann M, Lamoreux JF, et al. Global biodiversity conservation priorities. *Science*. 2006; 313: 58–61. PMID: [16825561](https://pubmed.ncbi.nlm.nih.gov/16825561/)
21. Roberts CM, McClean CJ, Veron JE, Hawkins JP, Allen GR, McAllister DE, et al. Marine biodiversity hotspots and conservation priorities for tropical reefs. *Science*. 2002; 295: 1280–1284. PMID: [11847338](https://pubmed.ncbi.nlm.nih.gov/11847338/)
22. Delrieu-Trottin E, Williams JT, Bacchet P, Kulbicki M, Mourier J, Galzin R, et al. Shore fishes of the Marquesas Islands, an updated checklist with new records and new percentage of endemic species. *Check List*. 2002; 11: 1758.
23. Croxall JP, Butchart SH, Lascelles B, Stattersfield AJ, Sullivan B, Symes A, Taylor P. Seabird conservation status, threats and priority actions: a global assessment. *Bird Conserv Int*. 2012; 22: 1–34.

24. BirdLife International. Species factsheet: *Pterodroma defillippiana*; 2015. Database: [www.birdlife.org](http://www.birdlife.org). Accessed 11 June 2015.
25. Martínez C, Boré D. Catálogo de recursos pesqueros Chile. CORFO-IFOP; 1980, 92 pp.
26. Castilla JC, Defeo O. Latin American benthic shellfisheries: emphasis on co-management and experimental practices. *Rev Fish Biol Fish*. 2001; 11: 1–30.
27. Eddy TD, Gardner JP, Pérez-Matus A. Applying fishers' ecological knowledge to construct past and future lobster stocks in the Juan Fernández Archipelago, Chile. *PLoS ONE*. 2010; 5(11): e13670. doi: [10.1371/journal.pone.0013670](https://doi.org/10.1371/journal.pone.0013670) PMID: [21079761](https://pubmed.ncbi.nlm.nih.gov/21079761/)
28. Ernst B, Manríquez P, Orensanz JM, Roa R, Chamorro J, Parada C. Strengthening of a traditional territorial tenure system through protagonism in monitoring activities by lobster fishermen from the Juan Fernández Islands, Chile. *Bull Mar Sci*. 2010; 86: 315–338.
29. Arana P. Perspectivas históricas y proyecciones de la actividad pesquera realizada en el archipiélago de Juan Fernández, Chile. In: Castilla JC, editor. *Islas Oceánicas Chilenas: Conocimiento Científico y Necesidades de Investigaciones*. Santiago: Universidad Católica de Chile; 1987. pp 319–353.
30. Ernst B, Chamorro J, Manríquez P, Orensanz JL, Parma AM, Porobic J., Román C. Sustainability of the Juan Fernández lobster fishery (Chile) and the perils of generic science-based prescriptions. *Glob Environ Change*. 2013; 23: 1381–1392.
31. González-Ferrán O. Evolución geológica de las islas chilenas en el océano Pacífico. In: Castilla JC, editor. *Islas oceánicas chilenas: conocimiento científico y necesidades de investigación*. Santiago: Universidad Católica de Chile; 1987. pp. 37–54.
32. Rodrigo C, Lara L. Plate tectonics and the origin of the Juan Fernández Ridge: analysis of bathymetry and magnetic patterns. *Lat Am J Aquat Res*. 2014; 42: 907–917.
33. Rodrigo C, Díaz J, González-Fernández A. Origin of the Easter Submarine Alignment: morphology and structural lineaments. *Lat Am J Aquat Res*. 2014; 42: 857–870.
34. NOAA NMFS SWFSC ERD. SST, POES AVHRR, GAC, Global, Day and Night (Monthly Composite). Available: <http://coastwatch.pfeg.noaa.gov/erddap/info/erdAGsstamday/index.html>
35. Froese R, Pauly D. FishBase; 2011. World Wide Web electronic publication. [www.fishbase.org](http://www.fishbase.org). Accessed 11 June 2015.
36. Ludwig JA, Reynolds JF. *Statistical Ecology*. Hoboken, New York: John Wiley & Sons; 1988.
37. Rayner JCW, Best DJ. Extended ANOVA and rank transform procedures. *Aust NZ J Stat*. 2013; 55: 305–319.
38. ter Braak CJF, Šmilauer P. (2012) *Canoco Reference Manual and User's Guide: Software for Ordination, Version 5.0*. Microcomputer Power: Ithaca, NY, USA.
39. ter Braak CJ, Verdonschot PF. Canonical correspondence analysis and related multivariate methods in aquatic ecology. *Aquat Sci*. 1995; 57: 255–289.
40. Green RH. *Sampling Design and Statistical Methods for Environmental Biologists*. New York: Wiley Interscience; 1979.
41. Clarke KR. Non-parametric multivariate analyses of changes in community structure. *Aust J Ecol*. 1993; 18: 117–143.
42. Etchevery H. Algas Marinas de las Islas Oceánicas Chilenas. *Rev Biol Mar Oceanogr*. 1960; 10: 83–132.
43. Ramírez ME, Santelices B. Catálogo de las algas marinas bentónicas de la costa del Pacífico temperado de Sudamérica. *Monografías Biológicas*, 5. Santiago: Pontificia Universidad Católica de Chile. 1991.
44. Tegner MJ, Dayton PK. Ecosystem effects of fishing in kelp forest communities. *ICES J Mar Sci*. 2000; 57: 579–589.
45. Valentine JP, Edgar GJ. Impacts of a population outbreak of the urchin *Tripneustes gratilla* amongst Lord Howe Island coral communities. *Coral Reefs*. 2010; 29: 399–410.
46. Ling SD, Scheibling RE, Rassweiler A, Johnson CR, Shears N, Connell SD. et al. Global regime shift dynamics of catastrophic sea urchin overgrazing. *Philos Trans R Soc Lond B Biol Sci*. 2015; 370: 20130269. <http://dx.doi.org/10.1098/rstb.2013.0269>
47. Francis MP. Checklist of the coastal fishes of Lord Howe, Norfolk, and Kermadec Islands, southwest Pacific Ocean. *Pac Sci*. 1993; 47: 136–170.
48. Lindsay MJ, Patterson HM, Swearer SE. Habitat as a surrogate measure of reef fish diversity in the zoning of the Lord Howe Island Marine Park, Australia. *Mar Ecol Prog Ser*. 2008; 353: 265–273.

49. Edgar GJ, Davey A, Kelly G, Mawbey RB, Parsons K. Biogeographical and ecological context for managing threats to coral and rocky reef communities in the Lord Howe Island Marine Park, south-western Pacific. *Aquat Conserv.* 2010; 20: 378–396.
50. Pederson HG, Johnson CR. Predation of the sea urchin *Heliocidaris erythrogramma* by rock lobsters (*Jasus edwardsii*) in no-take marine reserves. *J Exp Mar Biol Ecol.* 2006. 336: 120–134.
51. Hoegh-Guldberg O, Bruno JF. The impact of climate change on the world's marine ecosystems. *Science.* 2010; 328: 1523–1528. doi: [10.1126/science.1189930](https://doi.org/10.1126/science.1189930) PMID: [20558709](https://pubmed.ncbi.nlm.nih.gov/20558709/)
52. Wernberg T, Thomsen MS, Tuya F, Kendrick GA, Staehr PA, Toohy BD. Decreasing resilience of kelp beds along a latitudinal temperature gradient: potential implications for a warmer future. *Ecol Lett.* 2010; 13: 685–694. doi: [10.1111/j.1461-0248.2010.01466.x](https://doi.org/10.1111/j.1461-0248.2010.01466.x) PMID: [20412279](https://pubmed.ncbi.nlm.nih.gov/20412279/)
53. Mortensen T. A Monograph of the Echinoidea. III, 1. Aulodonta, with additions to Vol. II (Lepidocentroida and Stirodonta). Copenhagen: CA Reitzel; 1940.
54. Randall JE. Reef and shore fishes of the Hawaiian Islands. Honolulu. Sea Grant College Program, University of Hawai'i; 2007.
55. Randall JE, Cea A. Shore fishes of Easter Island. Honolulu. University of Hawai'i Press; 2011.
56. Briggs JC. Marine centres of origin as evolutionary engines. *J Biogeogr.* 2003; 30:1–18.
57. Randall JE. The endemic shore fishes of the Hawaiian Islands, Lord Howe Island and Easter Island. Colloque Commerson 1973 O.R.S.T.O.M. Travaux Documents No. 47: 49–73.
58. Jones GP, Caley MJ, Munday PL. Rarity in coral reef fish communities. In: Sale PF, editor. *Coral Reef Fishes: Dynamics and Diversity in a Complex Ecosystem.* San Diego, California: Academic Press, 2002. pp. 81–101.
59. Hobbs J-PA, Jones GP, Munday PL. Extinction risk in endemic marine fishes. *Conserv Biol.* 2011; 25: 1053–1055. doi: [10.1111/j.1523-1739.2011.01698.x](https://doi.org/10.1111/j.1523-1739.2011.01698.x) PMID: [21676030](https://pubmed.ncbi.nlm.nih.gov/21676030/)
60. Dulvy NK, Sadovy Y, Reynolds JD. Extinction vulnerability in marine populations. *Fish Fish.* 2003; 9: 261–285.
61. Parravicini V, Villéger S, McClanahan T, Arias Gonzalez J, Bellwood D, Belmaker J, et al. Global mismatch between species richness and vulnerability of reef fish assemblages. *Ecol Lett.* 2014; 17: 1101–1110. doi: [10.1111/ele.12316](https://doi.org/10.1111/ele.12316) PMID: [24985880](https://pubmed.ncbi.nlm.nih.gov/24985880/)
62. Santelices B, Meneses I. A reassessment of the phytogeographic characterization of temperate Pacific South America. *Rev Chil Hist Nat.* 2000; 73: 605–614.
63. Vieira C, D'hondt S, De Clerck O, Payri CE. Toward an inordinate fondness for stars, beetles and Lobophora? Species diversity of the genus *Lobophora* (Dictyotales, Phaeophyceae) in New Caledonia. *J Phycol.* 2014; 50: 1101–1119.
64. Tellier F, Meynard AP, Correa JA, Faugeron S, Valero M. Phylogeographic analyses of the 30° S south-east Pacific biogeographic transition zone establish the occurrence of a sharp genetic discontinuity in the kelp *Lessonia nigrescens*: Vicariance or parapatry? *Mol Phylogenet Evol.* 2009; 53: 679–693. doi: [10.1016/j.ympev.2009.07.030](https://doi.org/10.1016/j.ympev.2009.07.030) PMID: [19647087](https://pubmed.ncbi.nlm.nih.gov/19647087/)
65. Miloslavich P, Klein E, Díaz JM, Hernandez CE, Bigatti G, Campos L, et al. Marine biodiversity in the Atlantic and Pacific coasts of South America: knowledge and gaps. *PLoS one.* 2001; 6: e14631.
66. Meneses I, Hoffmann AJ. Contribution to the marine algal flora of San Felix Island, Desventuradas Archipelago, Chile. *Pac Sci.* 1994; 48: 464–474.
67. Silva PC, Chacana ME. Marine algae from Islas San Félix y San Ambrosio (Chilean Oceanic Islands). *Cryptogamie, Algologie.* 2005; 26: 103–118.
68. Sandin SA, Smith JE, DeMartini EE, Dinsdale EA, Donner SD, et al. Degradation of coral reef communities across a gradient of human disturbance. *PLoS ONE* 2008; 3(2):e1548. doi: [10.1371/journal.pone.0001548](https://doi.org/10.1371/journal.pone.0001548) PMID: [18301734](https://pubmed.ncbi.nlm.nih.gov/18301734/)
69. Williams ID, Richards BL, Sandin SA, Baum JK, Schroeder RE, Nadon MO, et al. Differences in reef fish assemblages between populated and remote reefs spanning multiple archipelagos across the central and western Pacific. *J Mar Biol.* 2010; 2011: 1–14. doi: [10.1155/2011/826234](https://doi.org/10.1155/2011/826234)
70. Osman LP. Population status, distribution and foraging ecology of *Arctocephalus philippii* (Peters 1866) at Juan Fernandez Archipelago. Ph.D. dissertation, Universidad Austral de Chile, Valdivia, Chile. 2008.
71. Acuña HO, Francis JM. Spring and summer prey of the Juan Fernandez fur seal, *Arctocephalus philippii*. *Can J Zool.* 1995; 73: 1444–1452.



## S1Table.

Locations surveys during expeditions to San Ambrosio Island in the Desventuradas islands in February 2013 and Robinson Crusoe and Santa Clara islands in the Juan Fernández islands in January 2014.

Archipelago	Island	Date	Station	Exposure	Latitude	Longitude
Desventuradas	San Ambrosio	15-Feb-13	M1	Exposed	-26.3443	-79.8618
Desventuradas	San Ambrosio	15-Feb-13	M10	Protected	-26.3442	-79.9051
Desventuradas	San Ambrosio	13-Feb-13	M11	Protected	-26.3388	-79.9026
Desventuradas	San Ambrosio	21-Feb-13	M11A	Protected	-26.3414	-79.9044
Desventuradas	San Ambrosio	13-Feb-13	M12	Protected	-26.3384	-79.8996
Desventuradas	San Ambrosio	20-Feb-13	M13	Protected	-26.3373	-79.8938
Desventuradas	San Ambrosio	14-Feb-13	M14	Protected	-26.3362	-79.8885
Desventuradas	San Ambrosio	22-Feb-13	M14A	Protected	-26.3371	-79.8804
Desventuradas	San Ambrosio	14-Feb-13	M15	Protected	-26.3361	-79.8846
Desventuradas	San Ambrosio	14-Feb-13	M16	Protected	-26.3375	-79.8777
Desventuradas	San Ambrosio	13-Feb-13	M17	Protected	-26.3399	-79.8728
Desventuradas	San Ambrosio	21-Feb-13	M18	Exposed	-26.3423	-79.8693
Desventuradas	San Ambrosio	22-Feb-13	M2	Exposed	-26.3455	-79.8734
Desventuradas	San Ambrosio	10-Feb-13	M3	Exposed	-26.3481	-79.8783
Desventuradas	San Ambrosio	15-Feb-13	M4	Exposed	-26.3495	-79.882
Desventuradas	San Ambrosio	23-Feb-13	M6	Exposed	-26.3493	-79.8897
Desventuradas	San Ambrosio	23-Feb-13	M7	Exposed	-26.3516	-79.8958
Desventuradas	San Ambrosio	23-Feb-13	M8	Exposed	-26.3505	-79.9017
Desventuradas	San Ambrosio	20-Feb-13	M9	Exposed	-26.3485	-79.9061
Juan Fernández	Robinson Crusoe	11-Jan-14	RC1	Protected	-33.60499	-78.87170
Juan Fernández	Robinson Crusoe	14-Jan-14	RC10	Exposed	-33.65974	-78.88843
Juan Fernández	Robinson Crusoe	16-Jan-14	RC11	Protected	-33.63900	-78.81391
Juan Fernández	Robinson Crusoe	16-Jan-14	RC12	Protected	-33.63858	-78.79855
Juan Fernández	Robinson Crusoe	17-Jan-14	RC13	Protected	-33.66371	-78.93912
Juan Fernández	Robinson Crusoe	17-Jan-14	RC14	Protected	-33.65100	-78.92200
Juan Fernández	Robinson Crusoe	17-Jan-14	RC15	Protected	-33.64465	-78.90948
Juan Fernández	Robinson Crusoe	18-Jan-14	RC16	Protected	-33.61551	-78.88913
Juan Fernández	Robinson Crusoe	18-Jan-14	RC17	Protected	-33.61401	-78.84803
Juan Fernández	Robinson Crusoe	18-Jan-14	RC18	Protected	-33.65635	-78.77660
Juan Fernández	Robinson Crusoe	11-Jan-14	RC2	Protected	-33.62381	-78.83978
Juan Fernández	Robinson Crusoe	12-Jan-14	RC3	Protected	-33.63759	-78.88902
Juan Fernández	Robinson Crusoe	12-Jan-14	RC4	Protected	-33.67308	-78.94286
Juan Fernández	Robinson Crusoe	13-Jan-14	RC5	Exposed	-33.67234	-78.86427

**S1Table.**

Continued

Archipelago	Island	Date	Station	Exposure	Latitude	Longitude
Juan Fernández	Robinson Crusoe	13-Jan-14	RC6	Exposed	-33.71457	-78.92334
Juan Fernández	Robinson Crusoe	13-Jan-14	RC7	Exposed	-33.69928	-78.95551
Juan Fernández	Robinson Crusoe	14-Jan-14	RC8	Exposed	-33.68271	-78.93410
Juan Fernández	Robinson Crusoe	14-Jan-14	RC9	Exposed	-33.66700	-78.92028

**S2 Table. Fishes observed around San Ambrosio Island and Robinson Crusoe and Santa Clara islands.** Taxa listed in phylogenetic order. Trophic number from Fishbase [26]. Trophic: BI – benthic invertivore, Herb – herbivore, BI/P – benthic invertivore/piscivore, Pisc – piscivore, Plank – planktivore, Biogeo. (Biogeographic) affinity: DES – Desventuradas, ETP – Eastern Tropical Pacific, JF – Juan Fernández, Easter – Easter Island, NAZCA – Nazca Ridge, Indo – Indo-Pacific, Use is for resource species consumed directly (food) or used as bait in the lobster and crab fisheries.

Family	Taxa	Common name	Trophic number	Trophic group	Biogeo. affinity	Use
Squalidae	<i>Squalus mitsukurii</i>	Shortspine spurdog	4.4	Pisc	Circumtropical	
Muraenidae	<i>Gymnothorax australicola</i>	South Pacific moray	3.8	BI/P	South Pacific	
Muraenidae	<i>Gymnothorax bathyphylus</i>	Deep-dwelling moray	4.0	BI/P	DES Easter	
Muraenidae	<i>Gymnothorax porphyreus</i>	Lowfin Moray	3.8	BI/P	South Pacific	Bait
Congridae	<i>Gnathopis cf. smithi</i>	Smith's Conger	3.5	BI/P	DES JF	
Ophichthidae	<i>Scolecenchelys chilensis</i>	Chilean Snake Eel	3.9	BI/P	DES JF	
Ophichthidae	<i>Scolecenchelys profundorum</i>	Deep Snake Eel	3.9	BI/P	NAZCA	
Synodontidae	<i>Synodus capricornis</i>	Capricorn lizardfish	4.1	Pisc	Antitropical	
Gonorynchidae	<i>Gonorynchus greyi</i>	Grey's Sandfish	3.4	Plank	South Pacific	
Exocoetidae	<i>Cheilopogon spilonotopterus</i>	Stained flyingfish	3.8	Plank	Indo	
Antennariidae	<i>Antennatus coccineus</i>	Scarlet frogfish	4.2	Pisc	Indo	
Antennariidae	<i>Antennatus sanguineus</i>	Bloody frogfish	4.2	Pisc	ETP	
Moridae	<i>Lotella fernandeziana</i>	Morid Cod	3.5	BI/P	DES JF	
Ophidiidae	<i>Ophidion metoecus</i>	Cusk-eel	3.5	BI/P	DES JF	
Trachichthyidae	<i>Paratrachichthys fernandezianus</i>	Chilean sandpaperfish	4.1	Pisc	DES JF	
Monocentridae	<i>Monocentris reedi</i>	Pinecone Fish	3.6	BI	DES JF	
Centriscidae	<i>Macroramphosus scolopax</i>	Longspine snipefish	3.5	BI	Circumtropical	
Centriscidae	<i>Macroramphosus gracilis</i>	Slender snipefish	3.5	BI	Circumtropical	
Syngnathidae	<i>Cosmocampus heraldi</i>	Pipefish	3.2	BI	Des JF	
Scorpaenidae	<i>Scorpaena fernandeziana</i>	Fernandez Scorpionfish	3.7	BI	DES JF	
Scorpaenidae	<i>Scorpaena thomsoni</i>	Thomson Scorpionfish	3.7	BI	DES JF	
Scorpaenidae	<i>Scorpaenodes englerti</i>	Englert's scorpionfish	3.5	BI	DES Easter	

## S1 continued

Family	Taxa	Common name	Trophic number	Trophic group	Biogeo. affinity	Use
Neosebastidae	<i>Maxillicosta reticulata</i>	Gunard Scorpionfish	3.4	BI	DES JF	
Triglidae	<i>Pterygotrigla picta</i>	Spotted gurnard	3.7	BI	South Pacific	
Polyprionidae	<i>Polyprion oxygeneios</i>	Hapuku wreckfish	4.5	Pisc	Circumglobal southern waters	
Callanthiidae	<i>Callanthias platei</i>	Splendid Perch	3.5	Plank	Des JF	
Serranidae	<i>Caprodon longimanus</i>	Pink maomao	3.9	Plank	Des JF	Bait
Serranidae	<i>Hypoplectrodes semicinctum</i>	Sea Perch	4.0	Pisc	DES JF	
Serranidae	<i>Paralabrax</i> sp.		4.0	Pisc	Coastal Chile	
Serranidae	<i>Plectranthias exsul</i>	Perchlet	4.1	Pisc	DES JF	
Serranidae	<i>Trachypoma macracanthus</i>	Toadstool groper	3.5	BI/P	South Pacific	
Carangidae	<i>Pseudocaranx chilensis</i>	Juan Fernandez trevally	3.6	BI/P	DES JF	Bait, food
Carangidae	<i>Seriola lalandi</i>	Yellowtail Amberjack	4.1	Pisc	Circumtropical	Bait, food
Kyphosidae	<i>Girella albostriata</i>	Drummer	2.0	Herb	DES JF	Bait
Kyphosidae	<i>Kyphosus cinerascens</i>	Chub	2.0	Herb	Indo	Food
Kyphosidae	<i>Scorpis chilensis</i>	Chilean Sweeper	3.3	Plank	DES JF	Bait, food
Sciaenidae	<i>Umbrina reedi</i>	King Croaker	3.4	BI	DES JF	Bait, food
Chaetodontidae	<i>Amphichaetodon melbae</i>	Narrow-barred butterflyfish	3.2	BI	Des JF	
Pentacerotidae	<i>Pentaceros capensis</i>	Armorhead	3.5	BI	Circumtropical	
Chironemidae	<i>Chironemus bicornis</i>	Two Horned Kelpfish	3.5	BI	Des JF	
Chironemidae	<i>Chironemus delfini</i>	Dolphin Kelpfish	3.5	BI	Des JF	
Cheilodactylidae	<i>Nemadactylus gayi</i>	Gay's Morwong	3.2	Plank	Des JF	Bait, food
Pinguipedidae	<i>Parapercis dockinsi</i>	Sandperch	3.5	BI	Des JF	
Pomacentridae	<i>Chromis meridiana</i>	Chromis	3.0	Plank	Des	
Labridae	<i>Pseudolabrus gayi</i>	Gay's Wrasse	3.4	BI	DES JF	
Labridae	<i>Malapterus reticulatus</i>	Reticulated Wrasse	3.5	BI	DES JF	
Labridae	<i>Suezichthys</i> sp.	Slender Wrasse	3.3	BI	DES JF	
Blenniidae	<i>Entomacrodus chapmani</i>	Chapman's Blenny	2.0	Herb	DES Easter	

## S1 continued

Family	Taxa	Common name	Trophic number	Trophic group	Biogeo. affinity	Use
Blenniidae	<i>Scartichthys variolatus</i>	Spotted Rockskipper	2.6	Herb	DES JF	
Gobiidae	<i>Paratrimma urospila</i>	Spottail Dwarfgoby	3.3	BI	DES JF	
Gobiidae	<i>Paratrimma nigrimenta</i>	Dwarfgoby	3.3	BI	JF	
Bothidae	<i>Arnoglossus coeruleosticta</i>	Blue Lefteye Flounder	4.3	Pisc	Des JF	
Paralichthyidae	<i>Paralichthys fernandezianus</i>	Juan Fernandez Flounder	4.3	Pisc	DES JF	Food
Soleidae	<i>Aseraggodes bahamondei</i>	Blue Lefteye Flounder	3.6	BI	South Pacific	