

**Molecular Systematics of the *Lomandra* Labill. Complex  
(Asparagales: Laxmanniaceae)**

**by**

**Matthew J. Donnon, B.Sc.Hons**

A thesis submitted in fulfilment of the requirements for the degree of

Doctor of Philosophy

Ecology and Evolutionary Biology

Faculty of Science

The University of Adelaide

September 2009

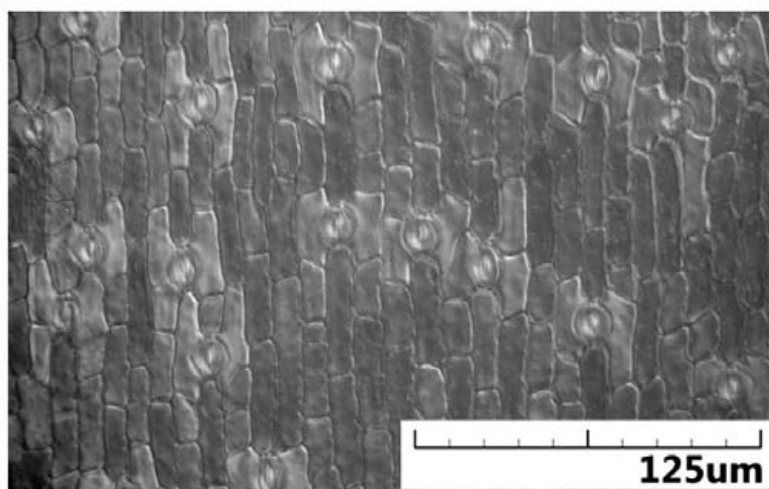
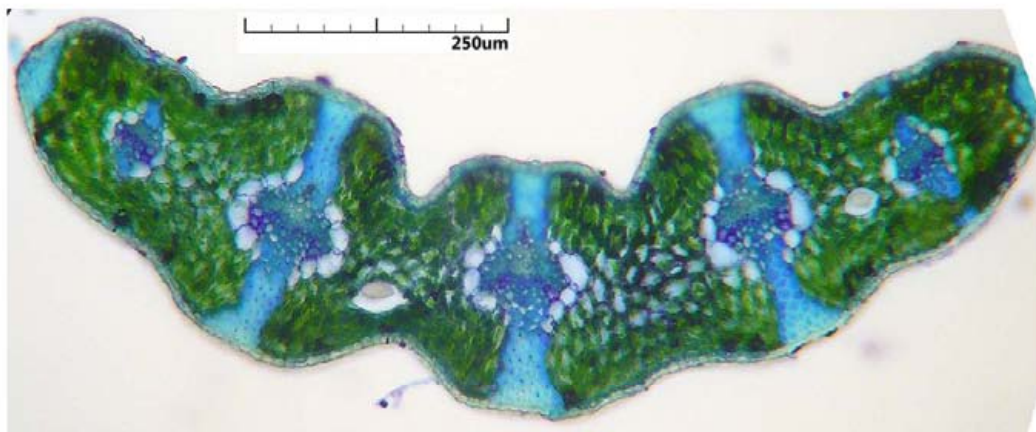
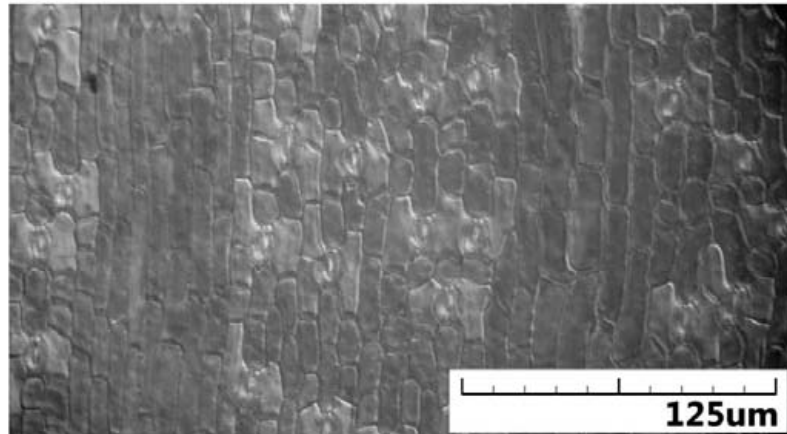
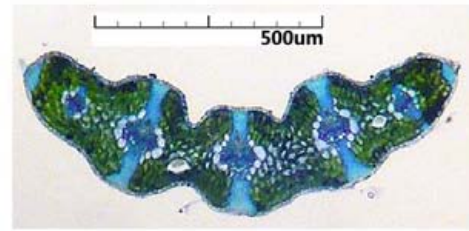
**Appendix A: *Lomandra* Complex Thin Section and Cuticle Images**

<i>Acanthocarpus</i> Lehm. . . . .	216
<i>Arthropodium</i> R.Br. . . . .	222
<i>Chamaexeros</i> Benth. . . . .	224
<i>Eustrephus</i> R.Br. . . . .	228
<i>Laxmannia</i> R.Br. . . . .	230
<i>Lomandra</i> Labill.	
Section I: <i>Macrostachya</i> . . . . .	232
Section II: <i>Typhopsis</i> . . . . .	234
Section III: <i>Capitatae</i> . . . . .	239
Section IV: <i>Lomandra</i> ; Series I: <i>Lomandra</i> . . . . .	255
Section IV: <i>Lomandra</i> ; Series II: <i>Sparsiflorae</i> . . . . .	295
<i>Romnalda</i> P.F.Stevens. . . . .	333
<i>Thysanotus</i> R.Br. . . . .	337
<i>Xerolirion</i> A.S.George. . . . .	339

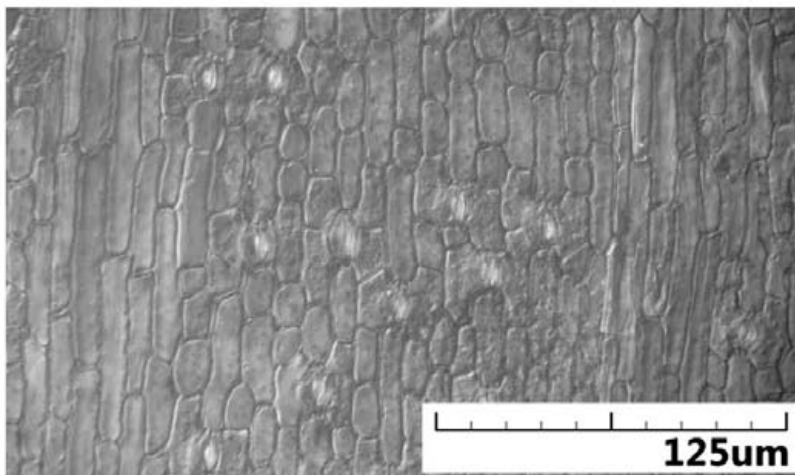
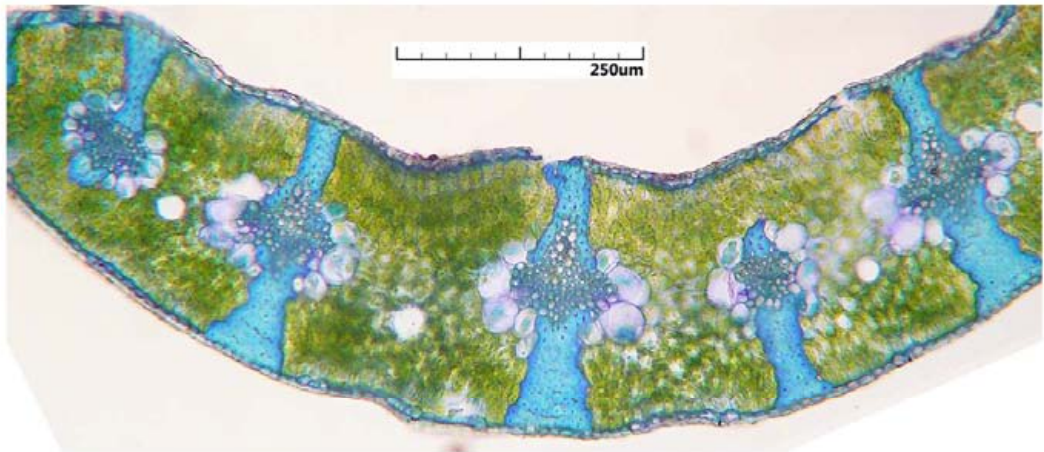
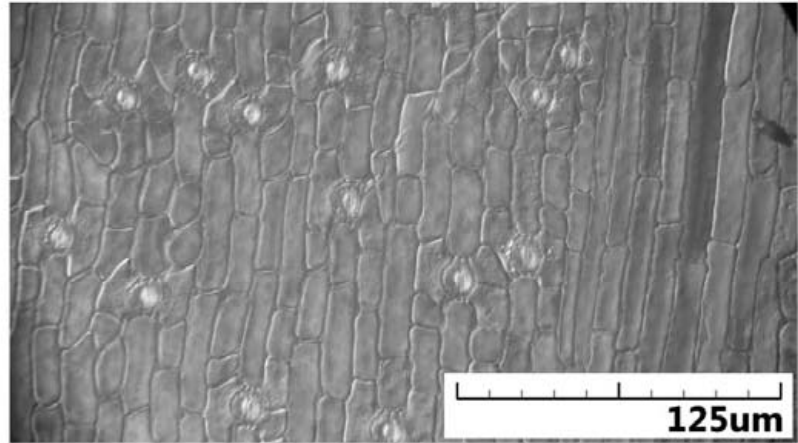
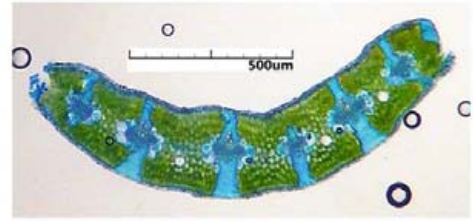
***Acanthocarpus* Lehm.**

<i>Acanthocarpus canaliculatus</i>	70617.5
<i>Acanthocarpus humilis</i>	70617.6
<i>Acanthocarpus parviflorus</i>	70123.3
<i>Acanthocarpus preisii</i>	70123.4
<i>Acanthocarpus</i> sp. nov.	70617.7

*Acanthocarpus canaliculatus* 70617.5

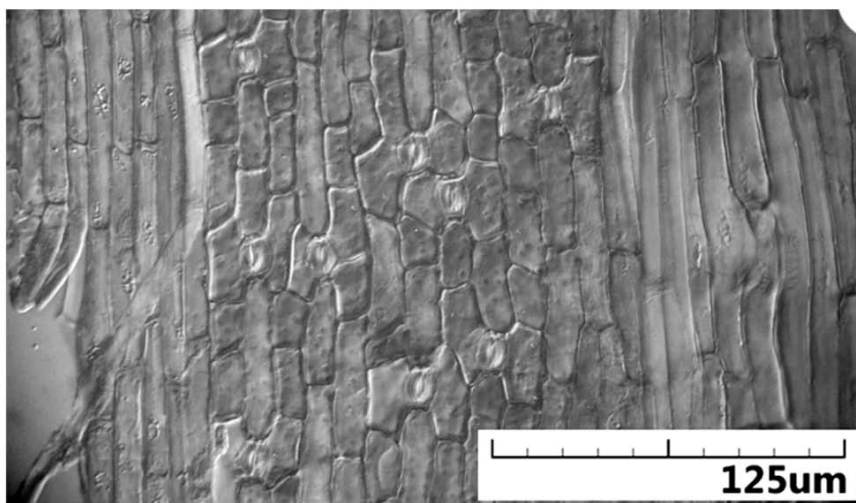
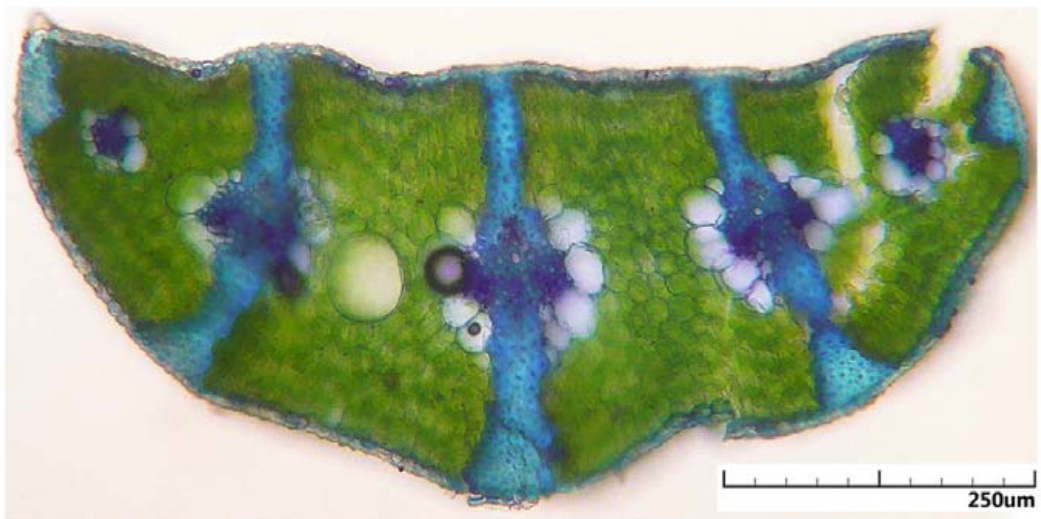
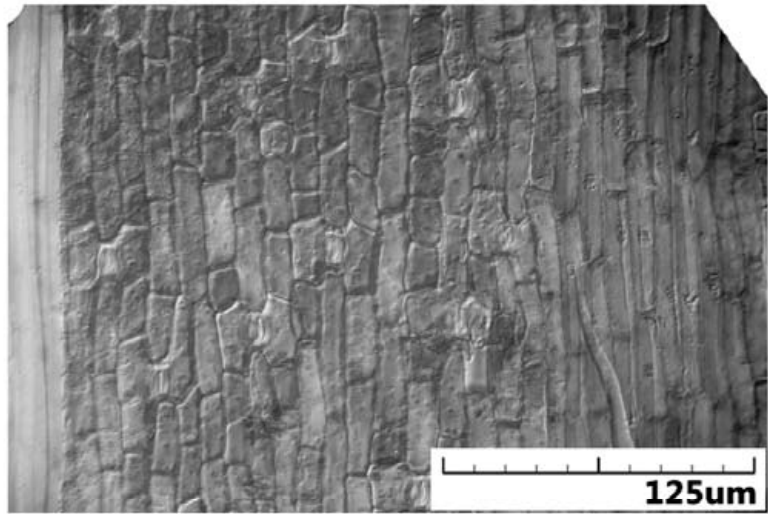


*Acanthocarpus canaliculatus* 70617.6

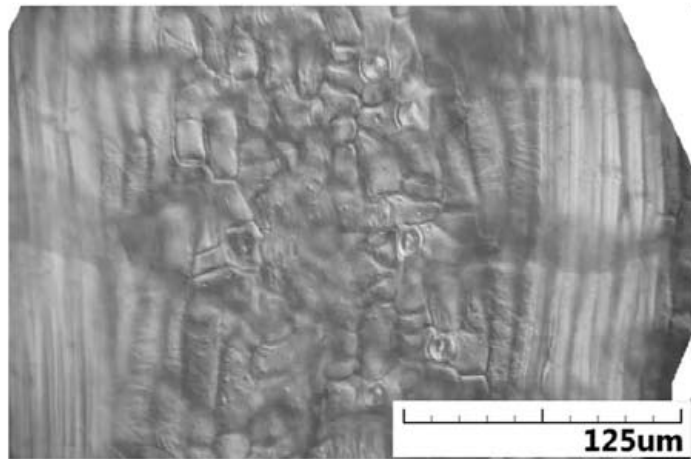
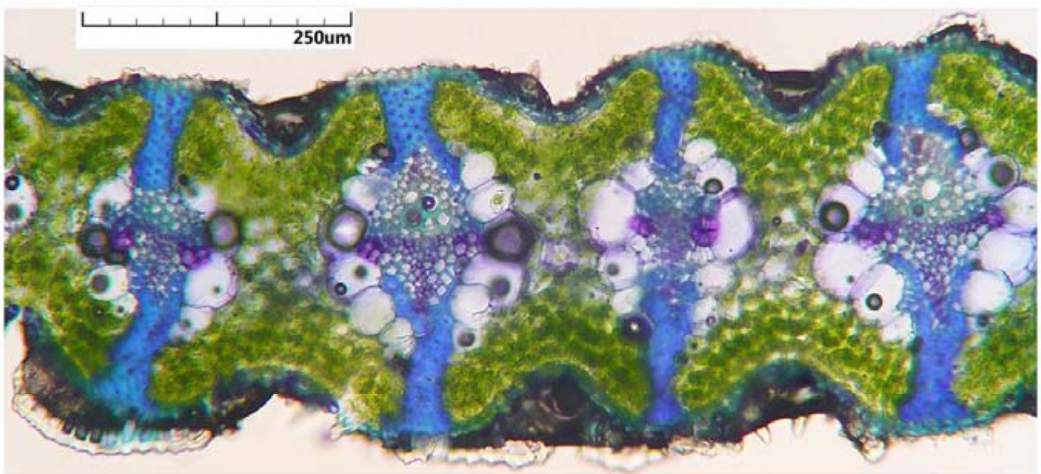
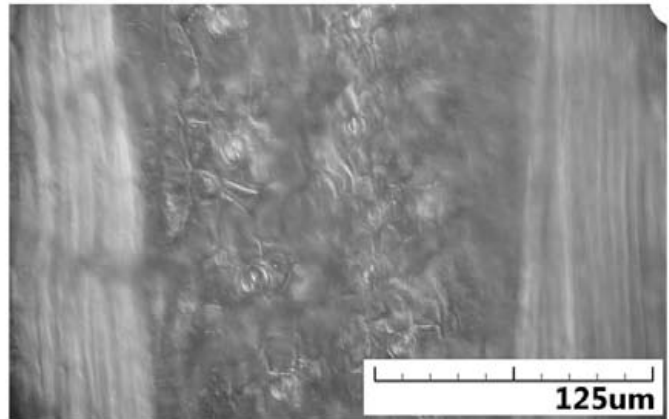
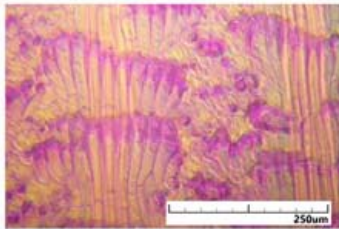
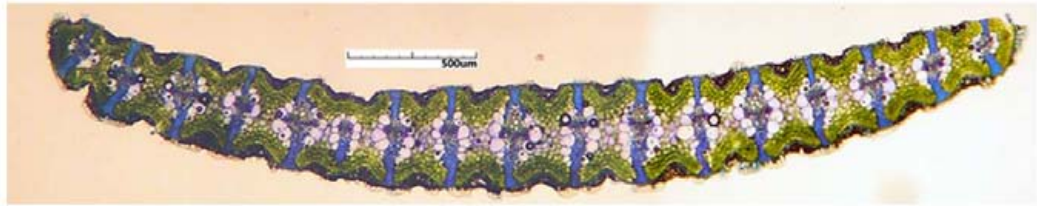




*Acanthocarpus parviflorus* 70123.3

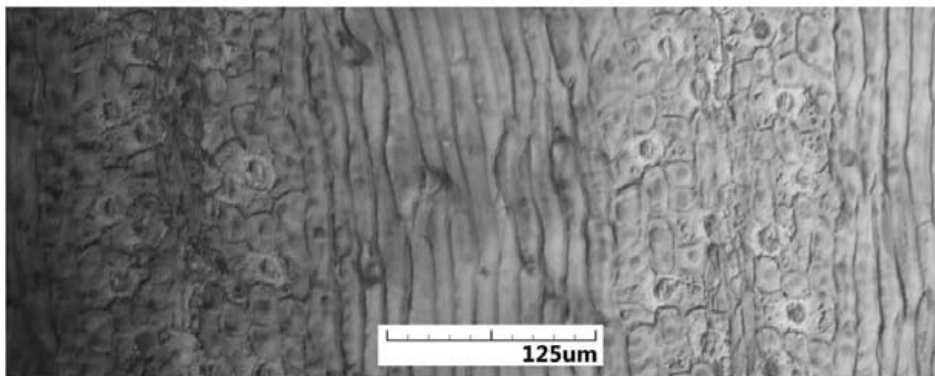
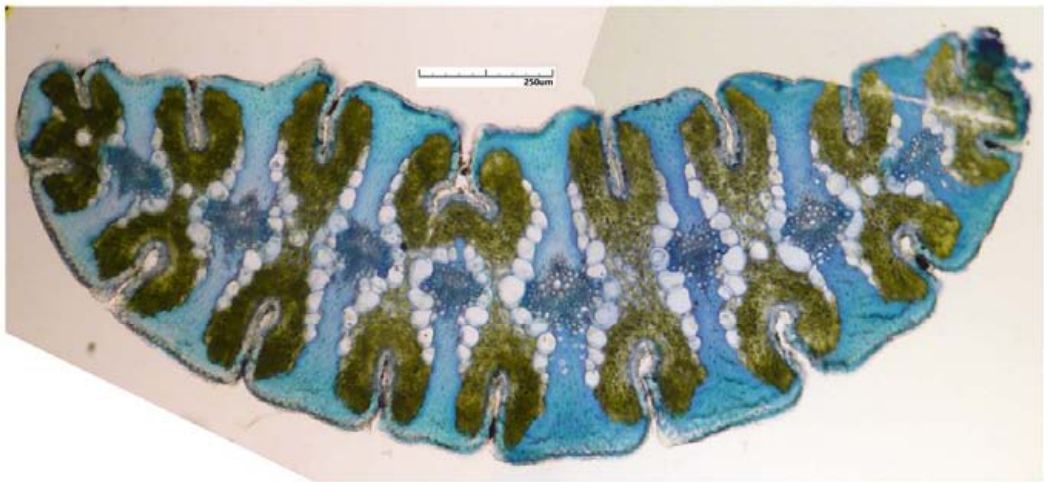
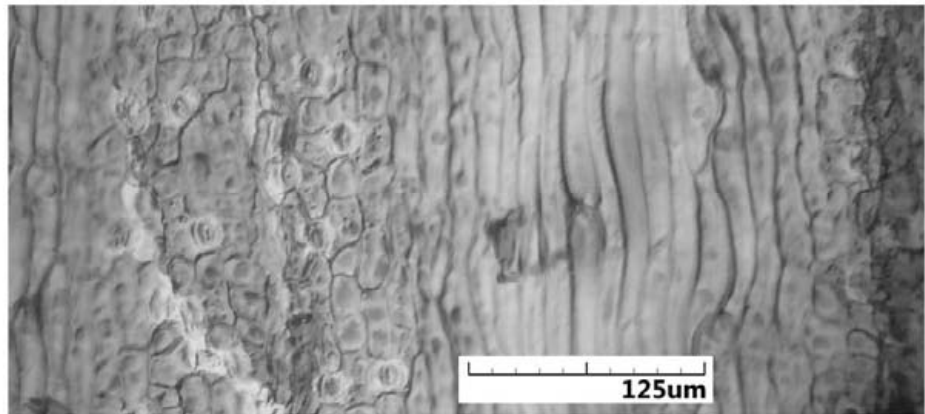
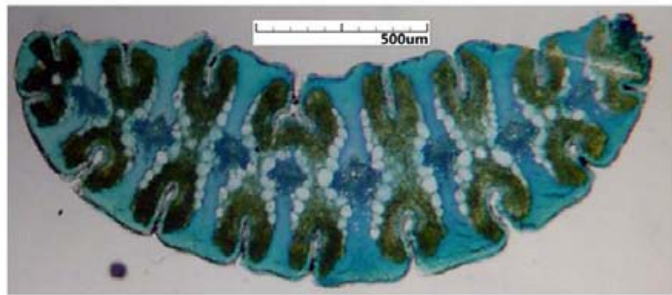


*Acanthocarpus preissii* 70123.4





*Acanthocarpus* sp. nov. 70617.7

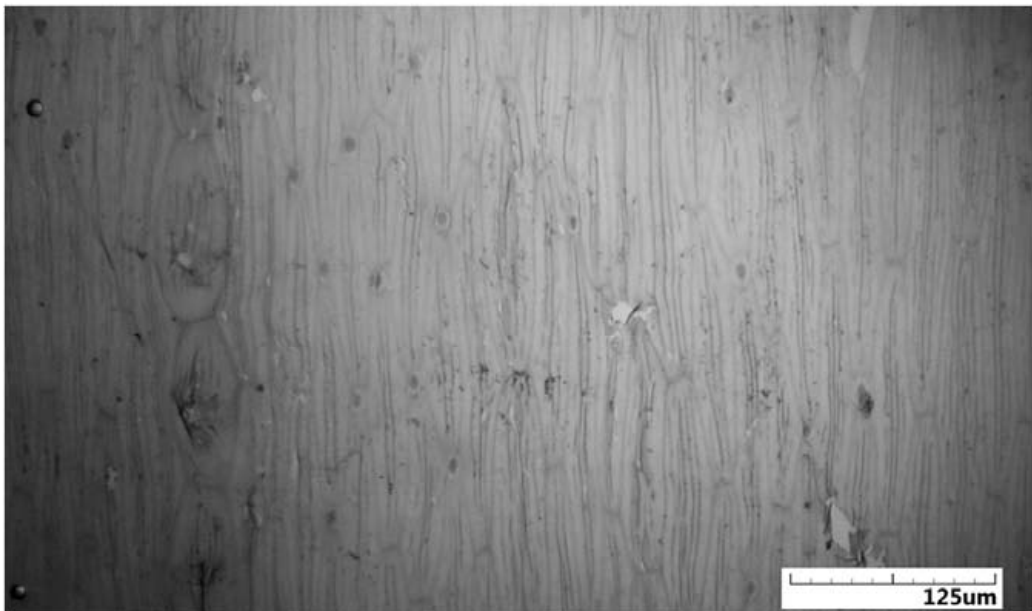
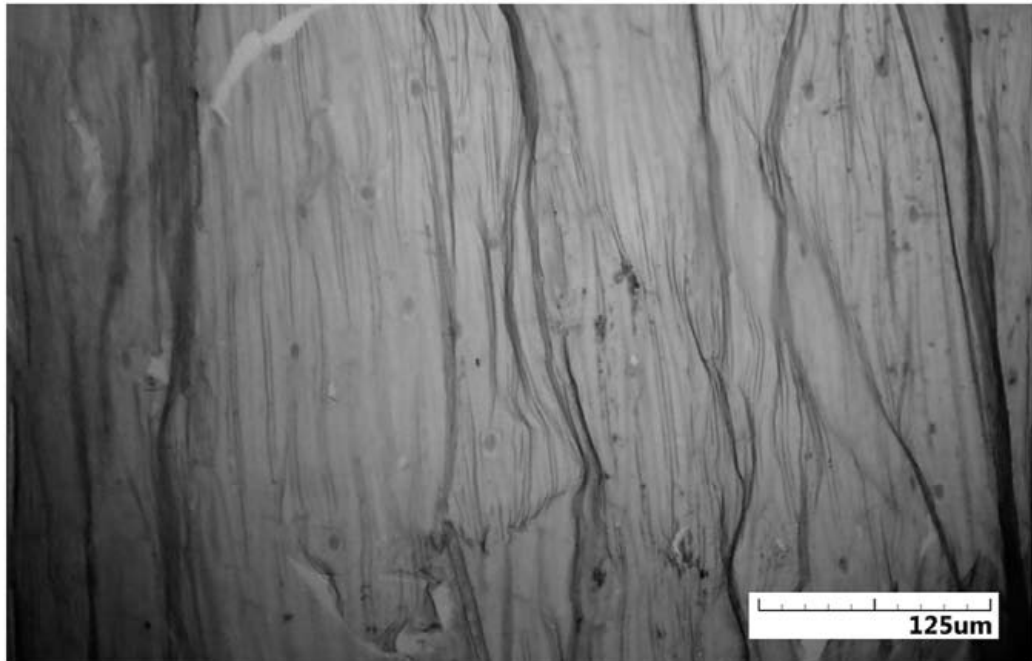


***Arthropodium* R.Br.**

*Arthropodium dyeri*

70702.1

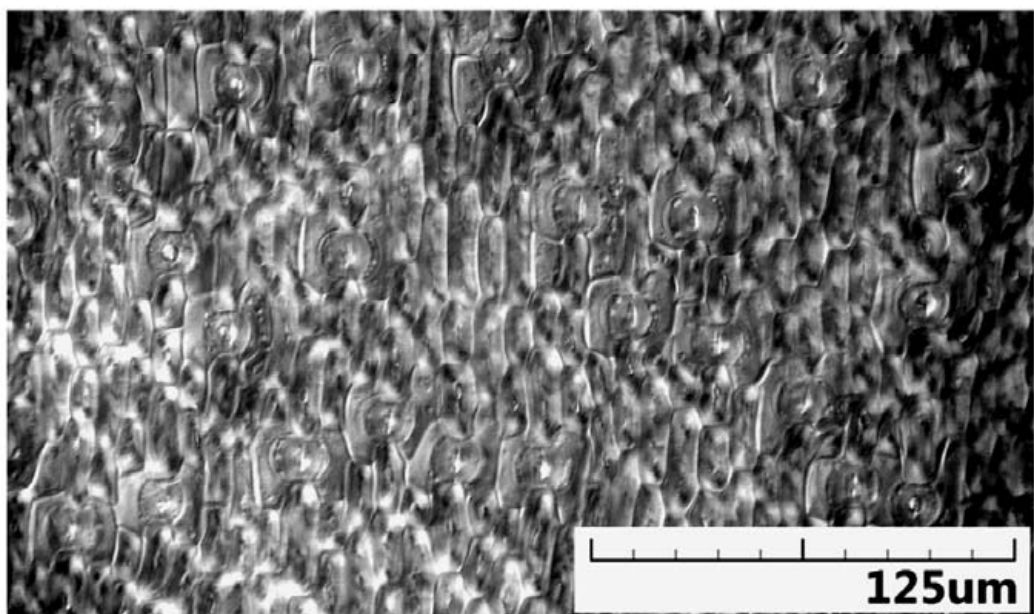
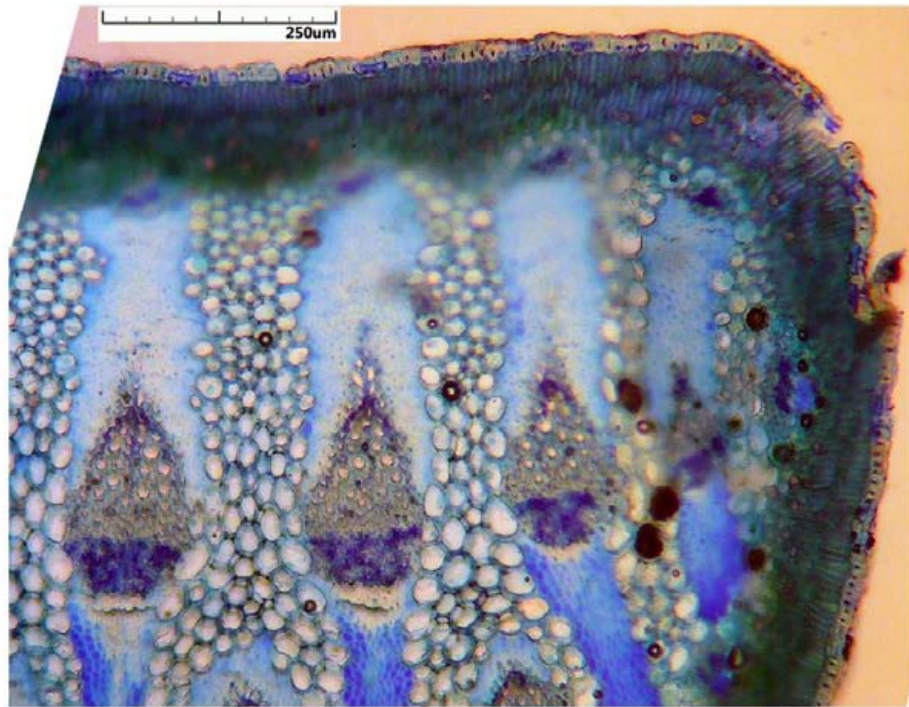
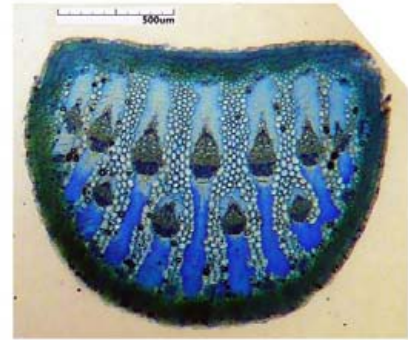
*Arthropodium dyeri* 70702.1 (cuticle only)



***Chamaexeros* Benth.**

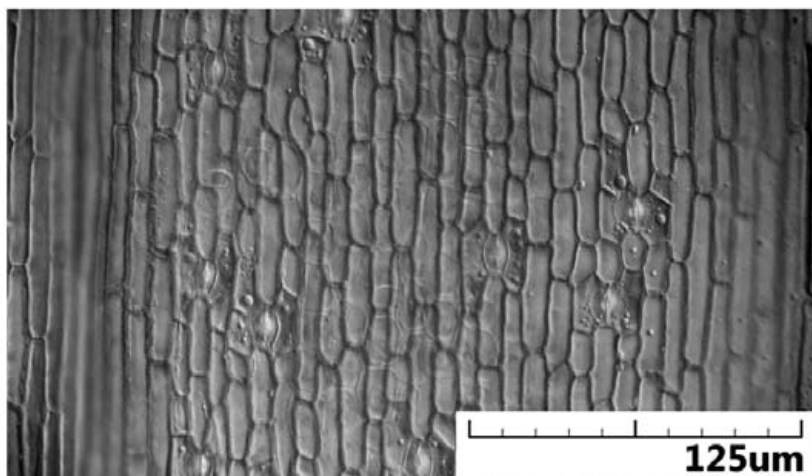
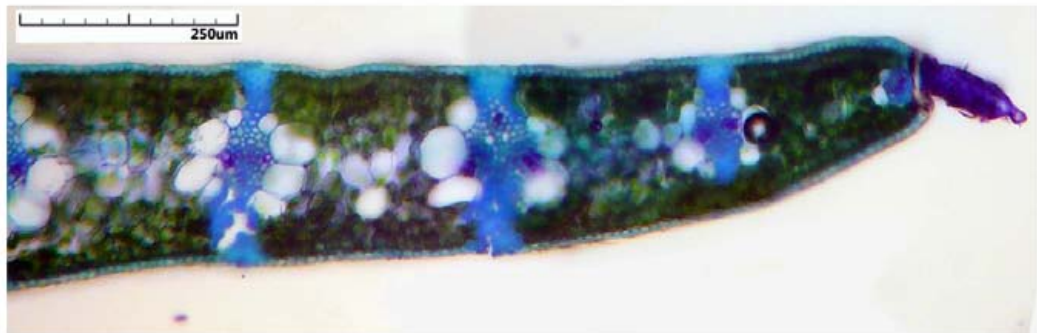
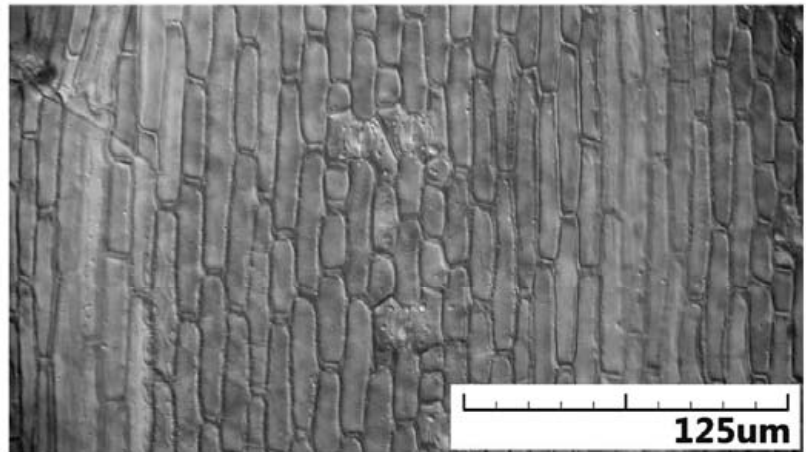
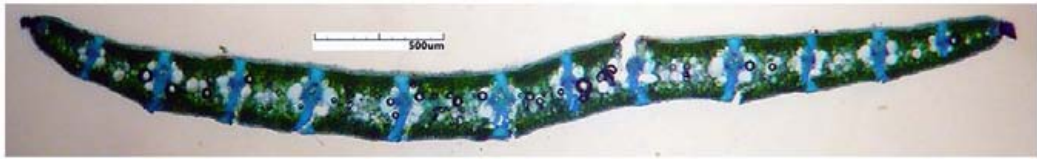
<i>Chamaexeros fimbriata</i>	70123.2
<i>Chamaexeros longicaulis</i>	70122.3
<i>Chamaexeros serra</i>	70614.3

*Chamaexeros fimbriata* 70123.2

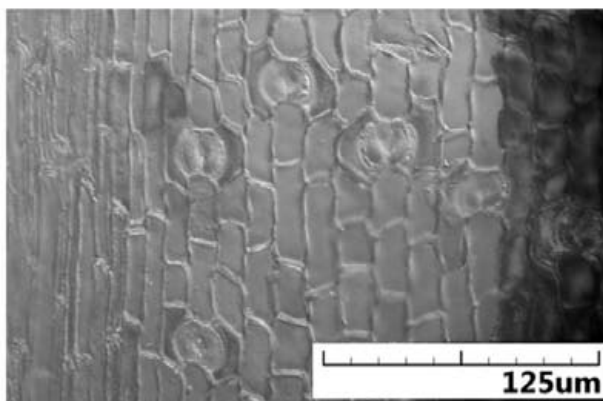
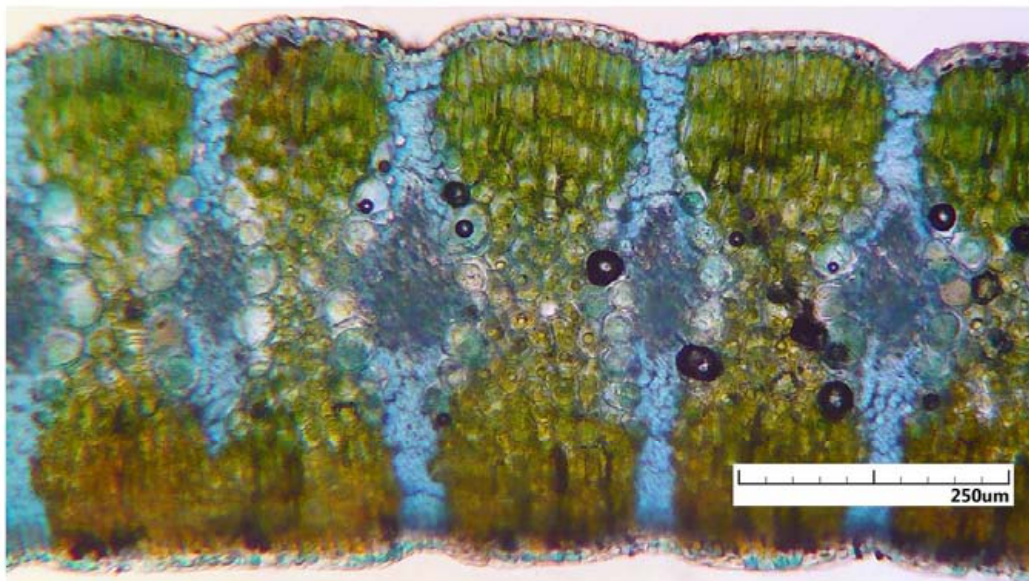
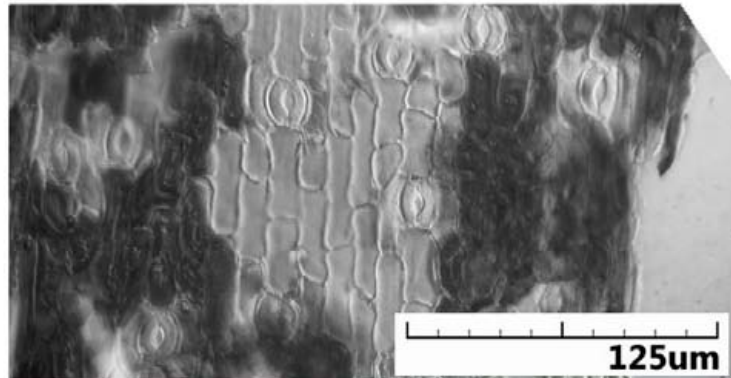
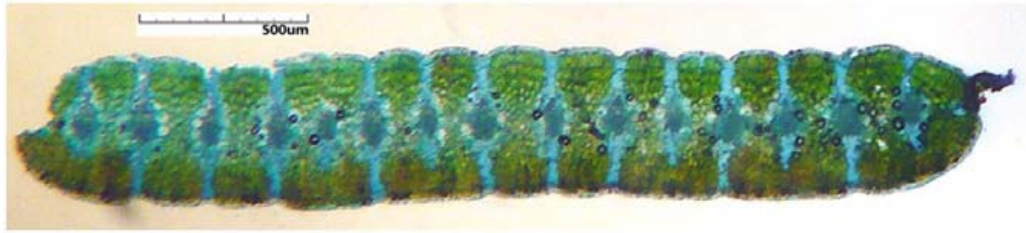




*Chamaexeros longicaulis* 70122.3



*Chamaexeros serra* 70614.3

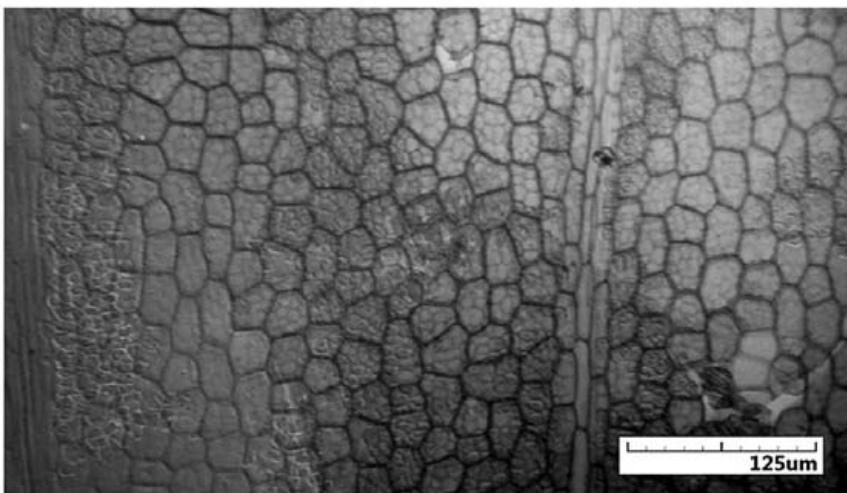
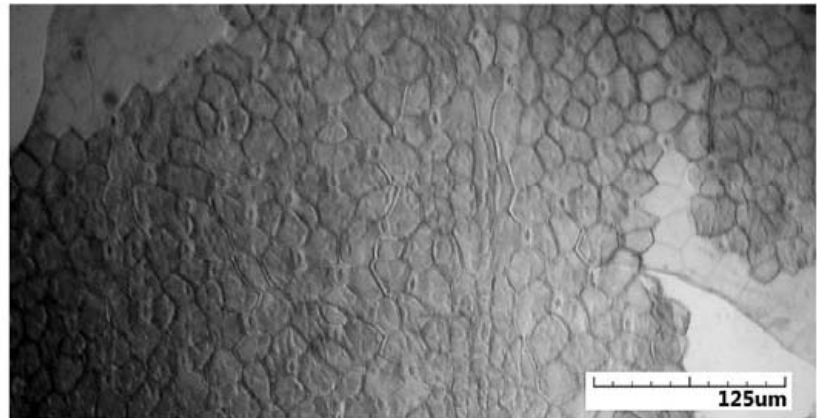
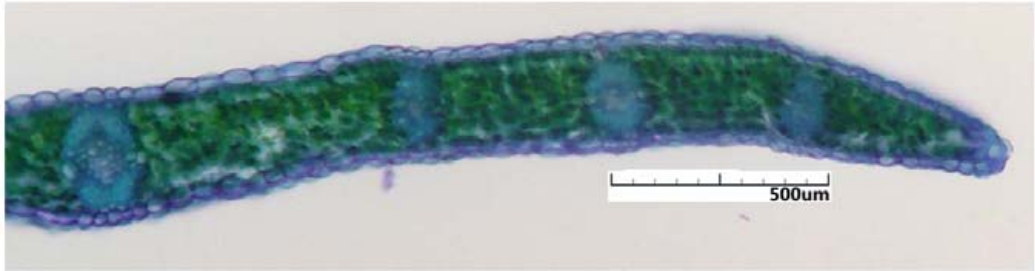


***Eustrephus* R.Br.**

*Eustrephus latifolius*

70702.2

*Eustrephus latifolius* 70702.2



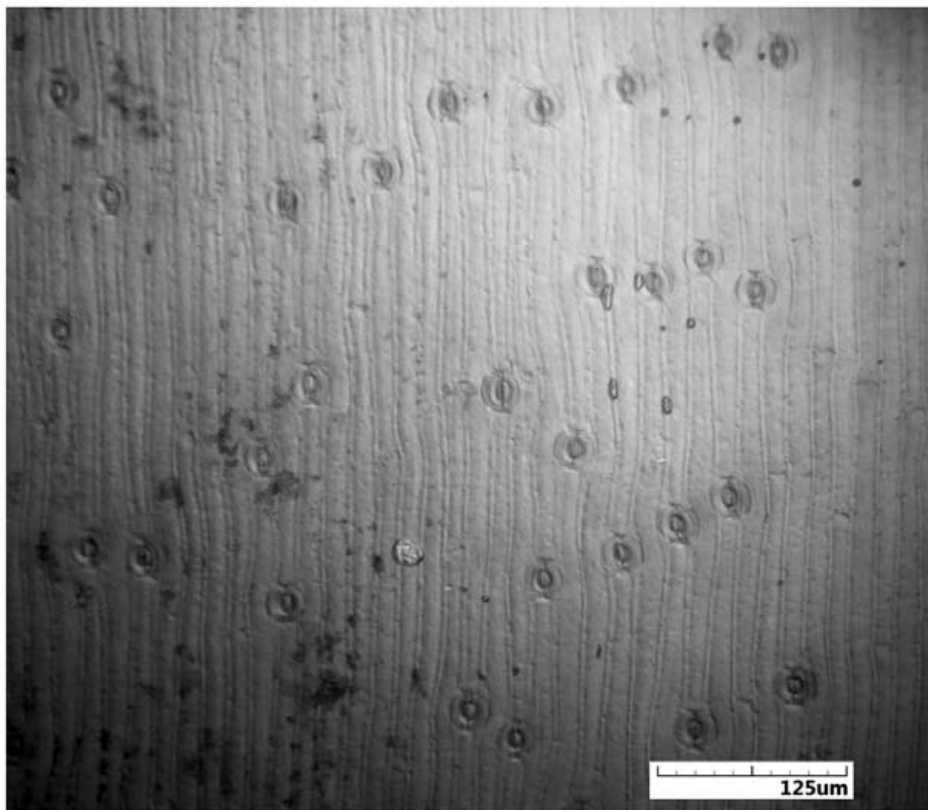
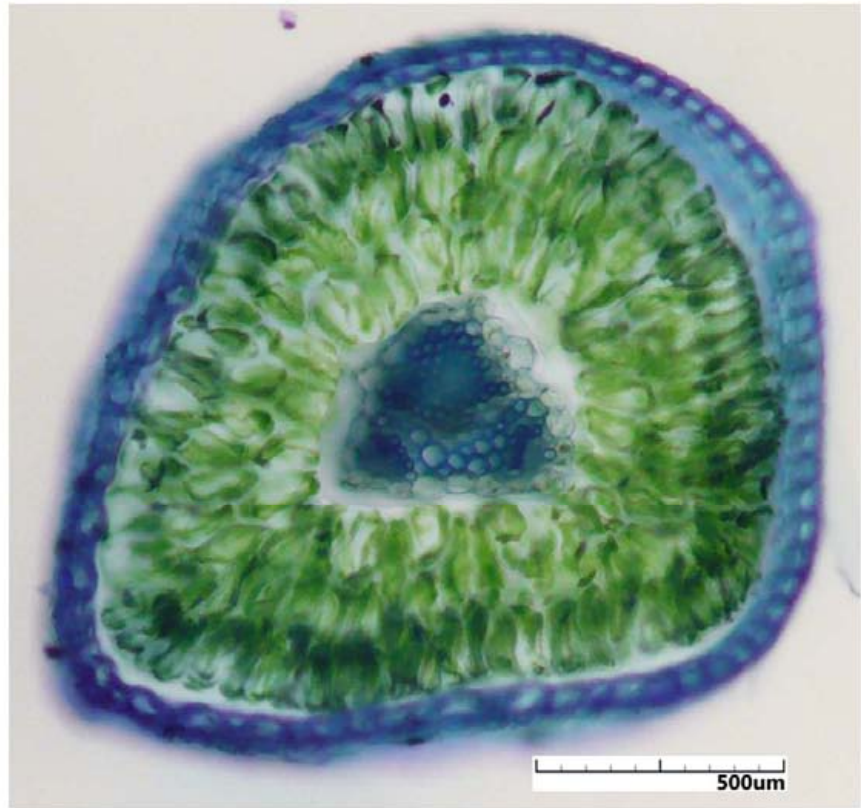
***Laxmannia* R.Br.**

*Laxmannia squarrosa*

70702.3



*Laxmannia squarrosa* 70702.3



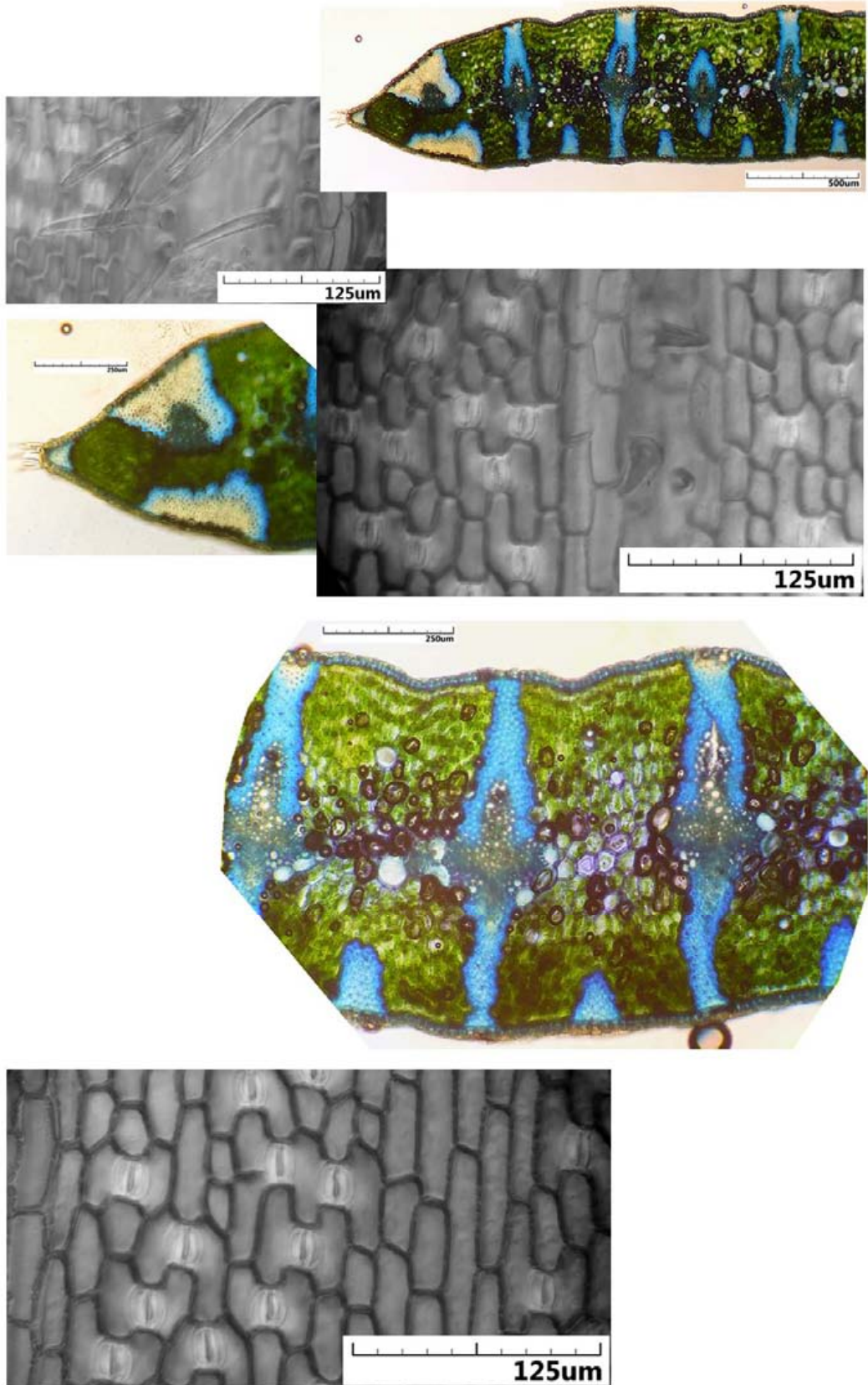
***Lomandra* Labill.**

**Section I: *Macrostachya***

*L. hastilis*

61212.1

*L. hastilis* 61212.1



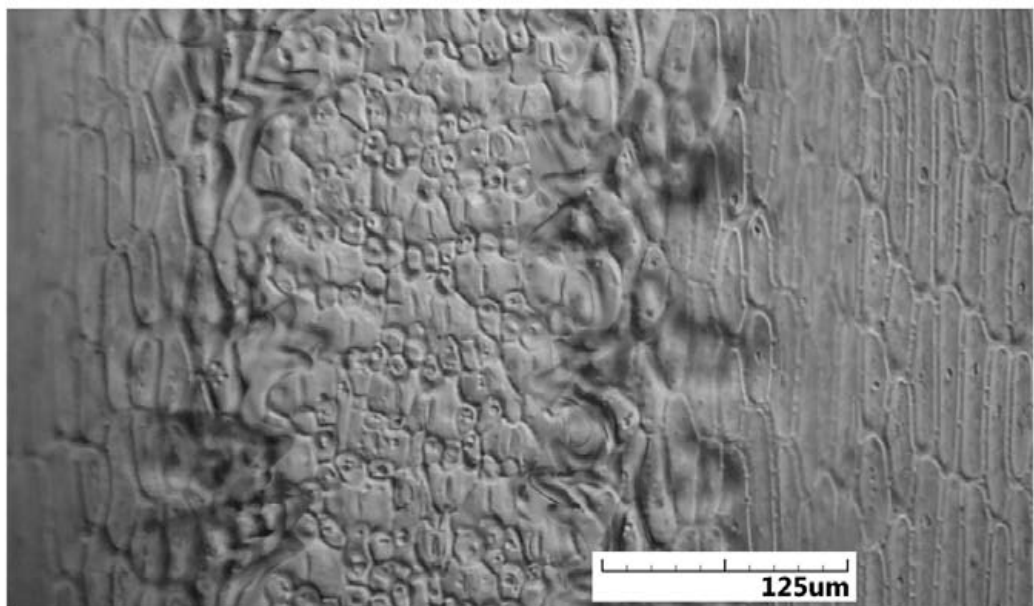
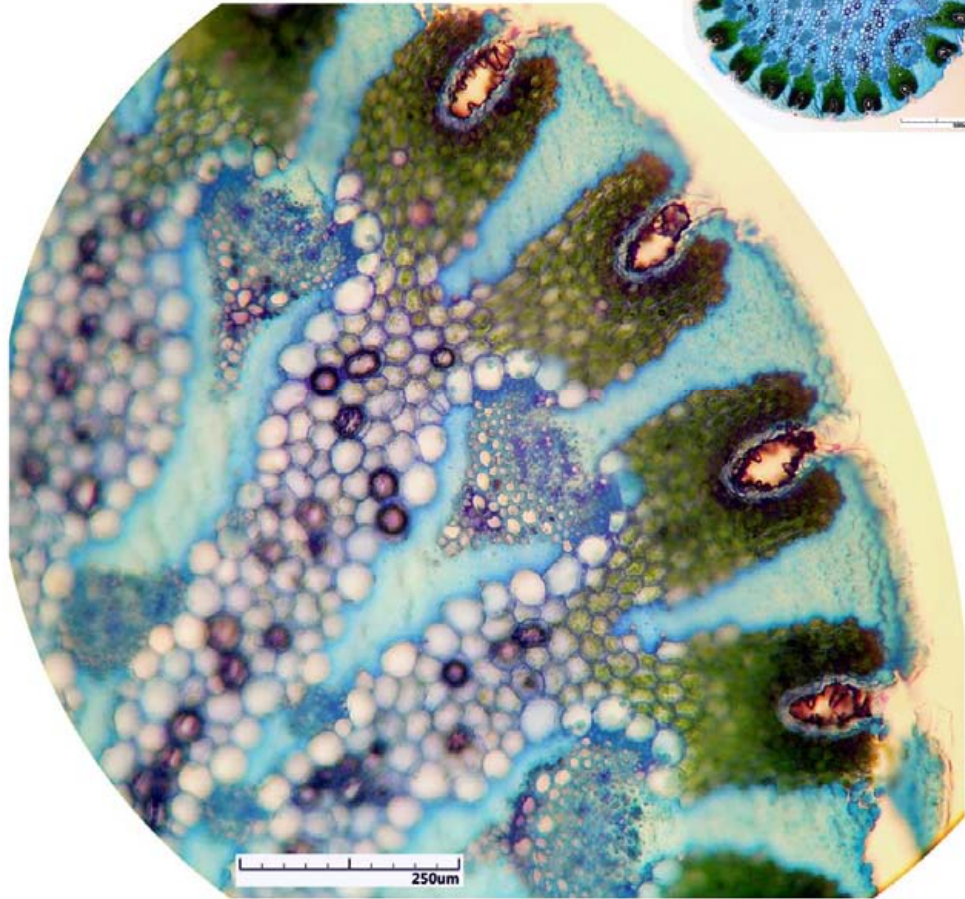
*Lomandra*

**Section II: *Typhopsis***

<i>L. juncea</i>	70103.5
<i>L. leucocephala leucocephala</i>	70509.1
<i>L. leucocephala leucocephala</i> (Salvator Rosa)	70731.4
<i>L. leucocephala robusta</i>	70103.6

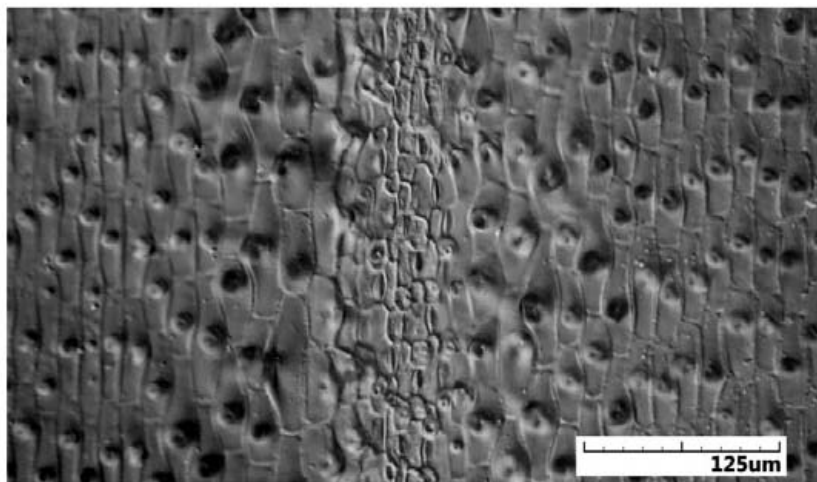
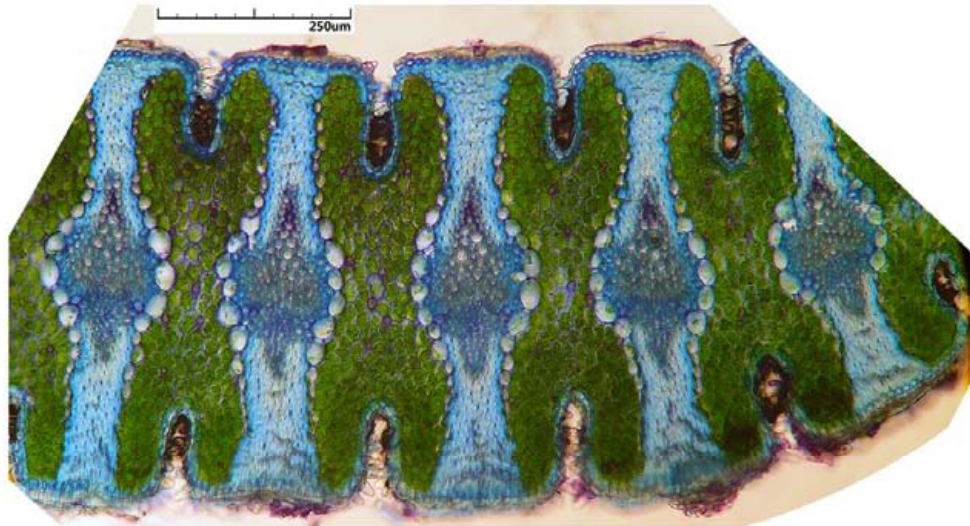
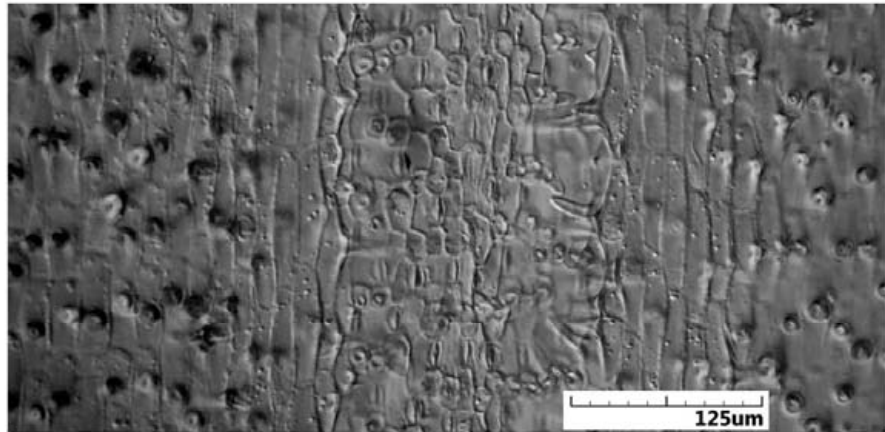


*L. juncea* 70103.5

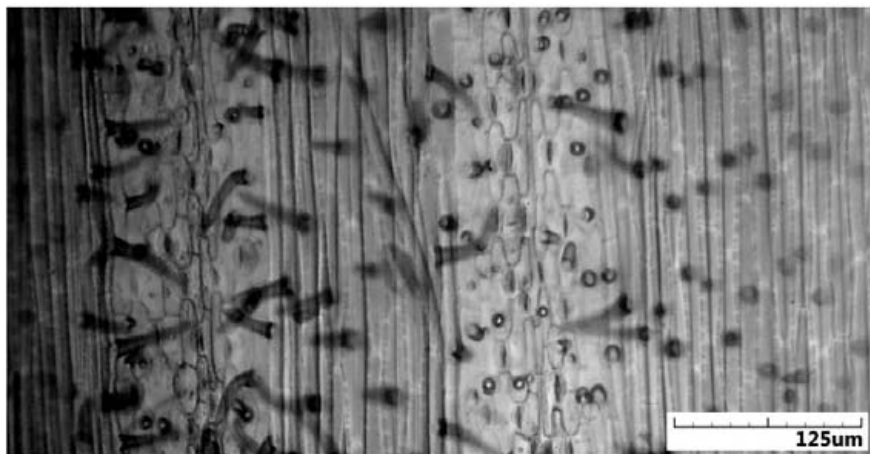
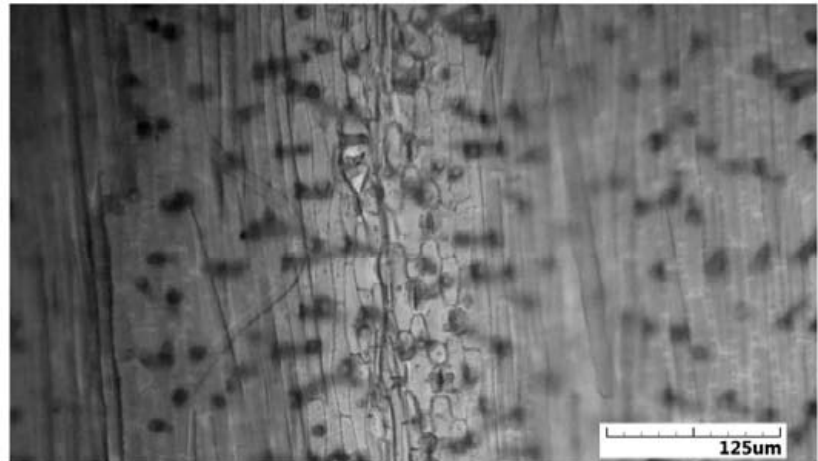
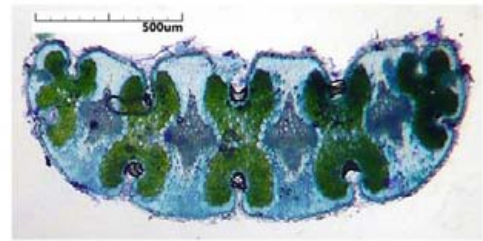




*L. leucocephala leucocephala* 70509.1

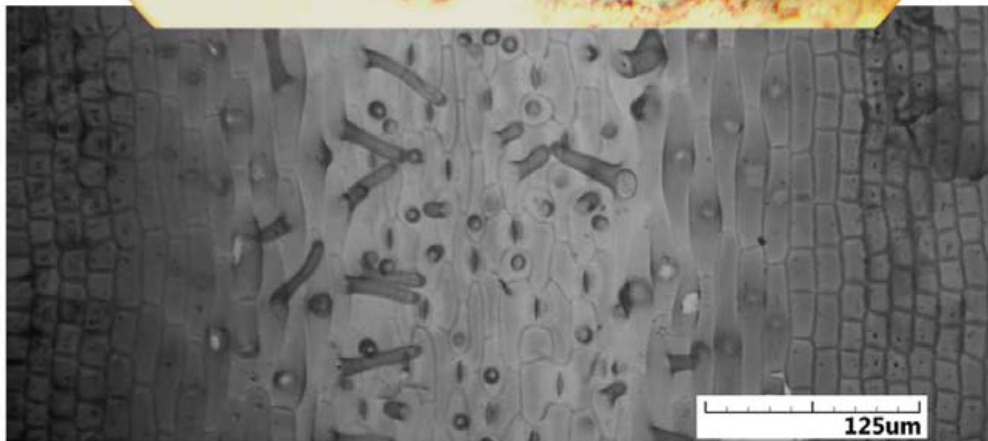
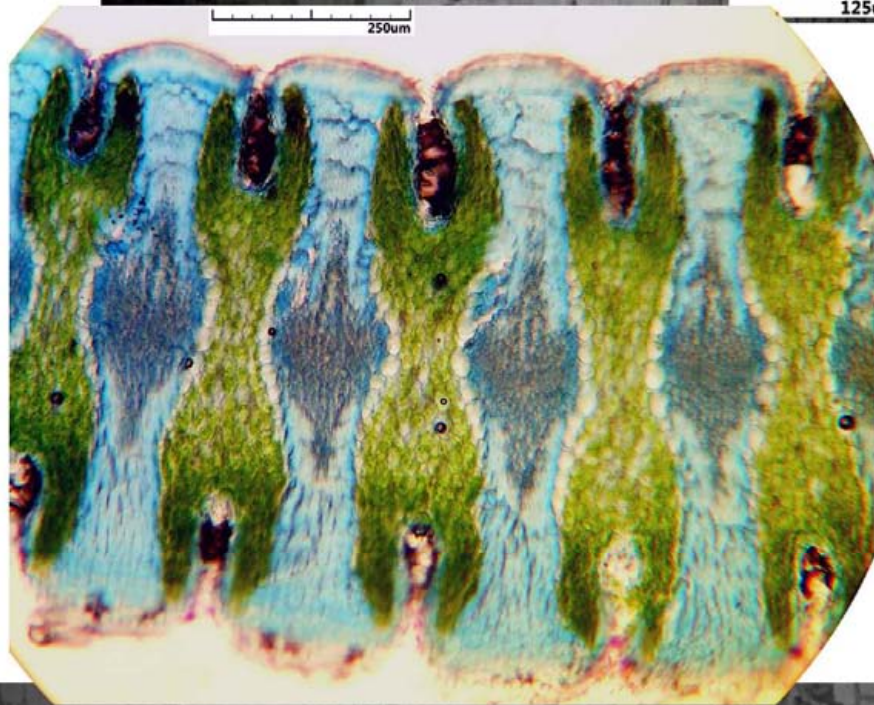
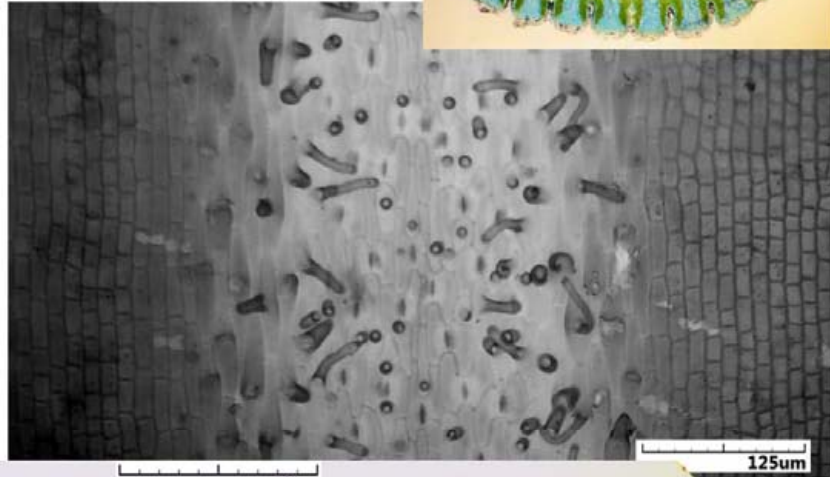
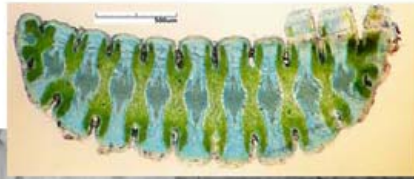


*L. leucocephala leucocephala* (Salvatore Rosa) 70731.4





*L. leucocephala robusta* 70103.6

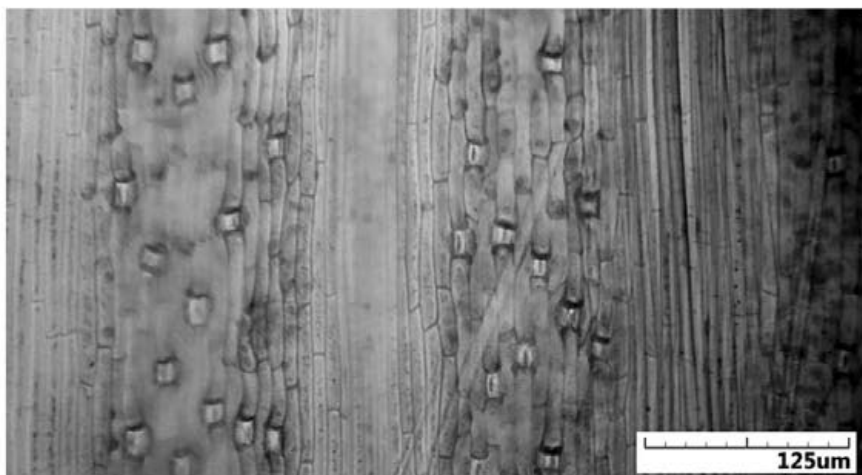
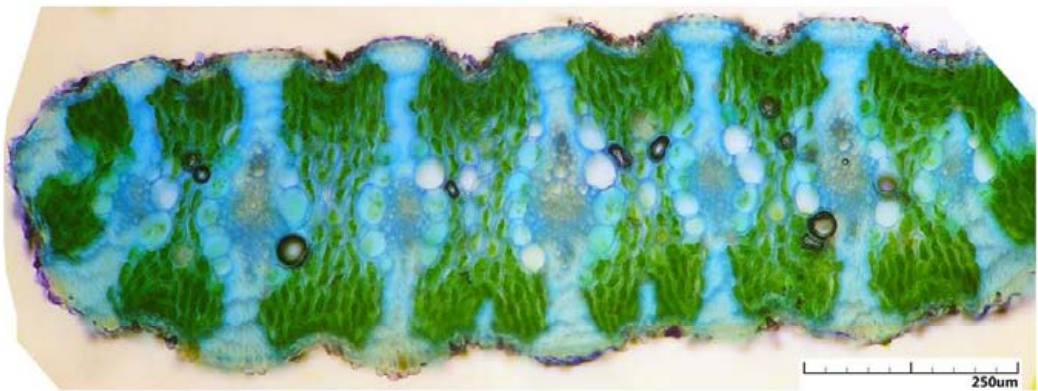
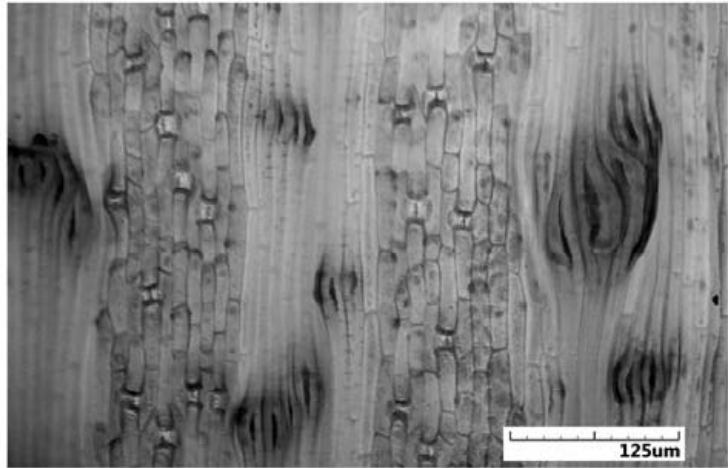
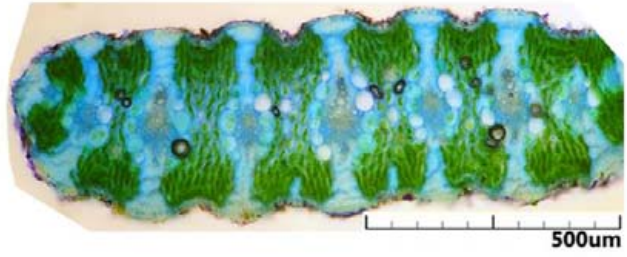


## *Lomandra*

### Section III: *Capitatae*

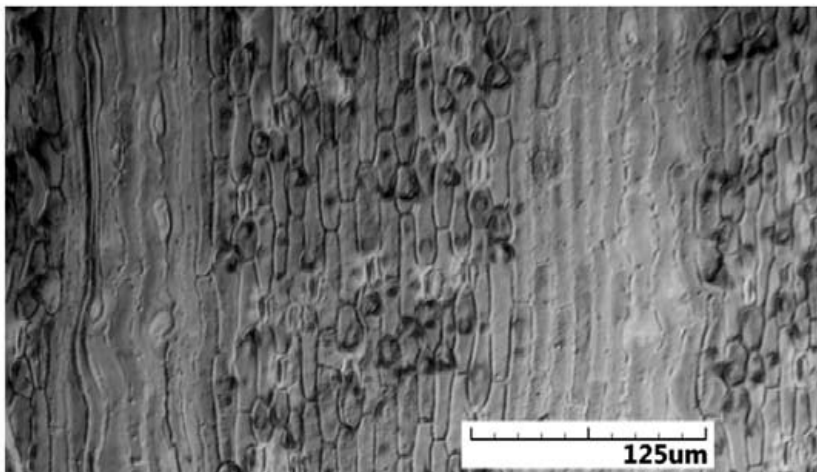
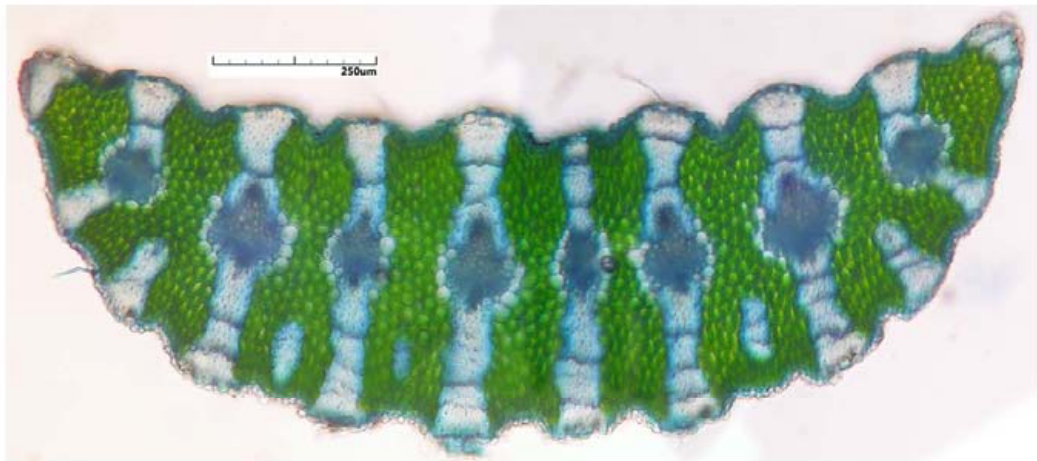
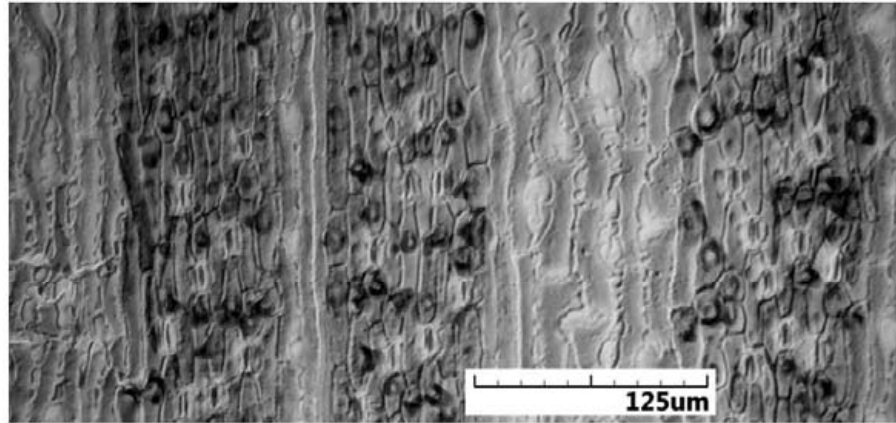
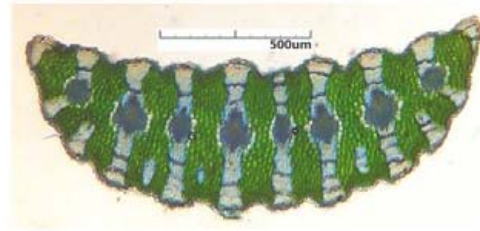
<i>L. collina</i>	70103.2
<i>L. collina</i> (SE-SA)	70704.1
<i>L. elongata</i>	70614.7
<i>L. glauca</i> (Broadleaf)	61207.1
<i>L. glauca</i> (Potato Point)	70501.5
<i>L. mucronata</i>	70122.2
<i>L. nana</i>	70102.1
<i>L. nana</i> (SE-SA)	70704.2
<i>L. obliqua</i>	61130.2
<i>L. obliqua</i>	70509.4
<i>L. rupestris</i>	70616.4
<i>L. suaveolens</i>	61212.2
<i>L. suaveolens</i> (Northern Sandplains)	70614.6
<i>L. suaveolens</i> (Perup)	70614.1
<i>L. sp. nov.</i> (Perup)	70922.1

*L. collina* 70103.2

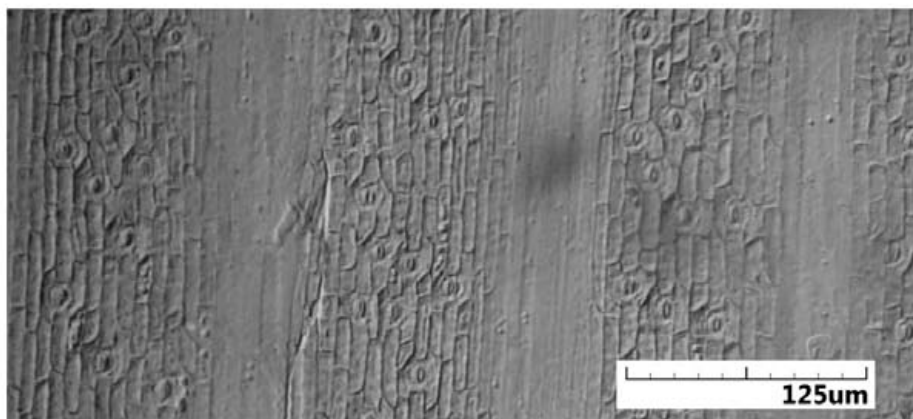
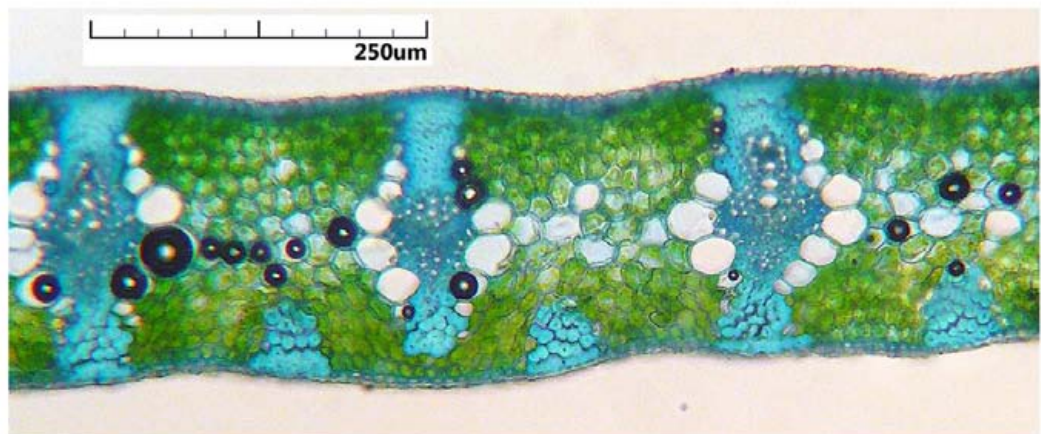
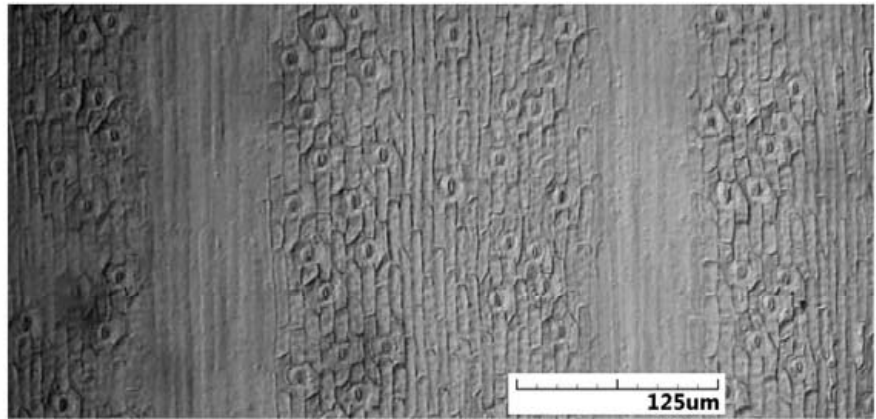
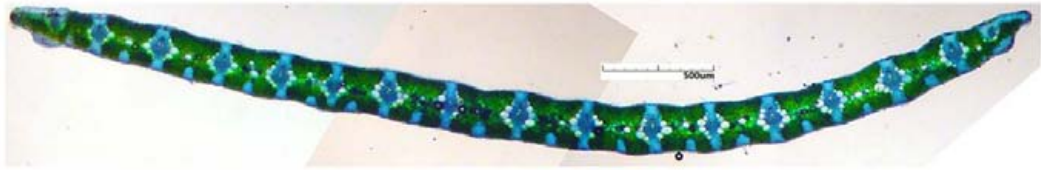




*L. collina* (SE-SA) 70704.1

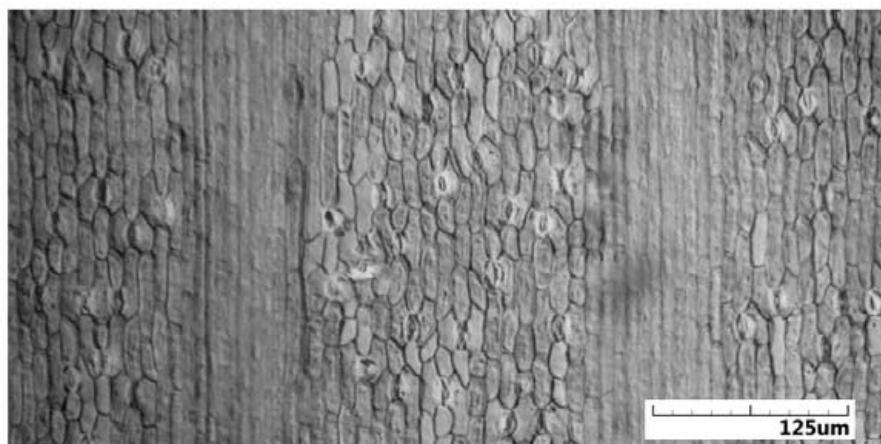
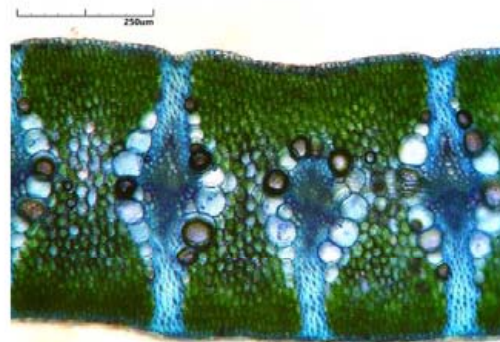
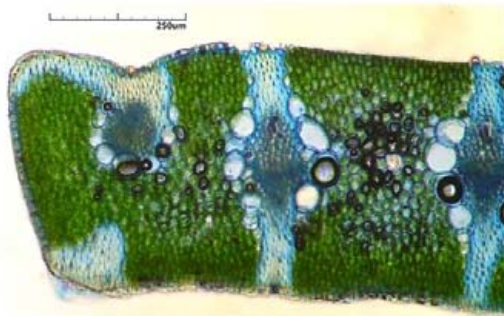
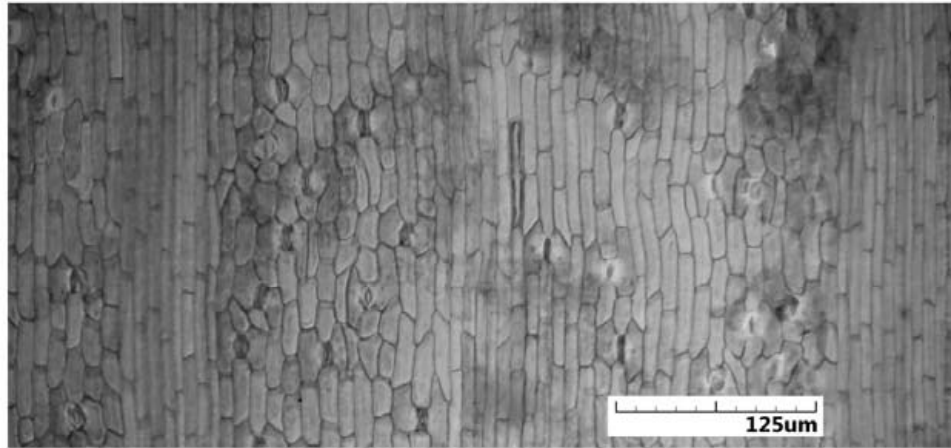


*L. elongata* 70614.7

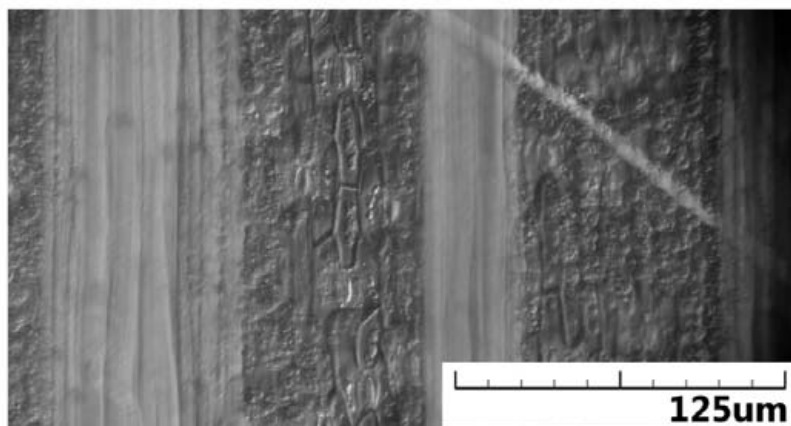
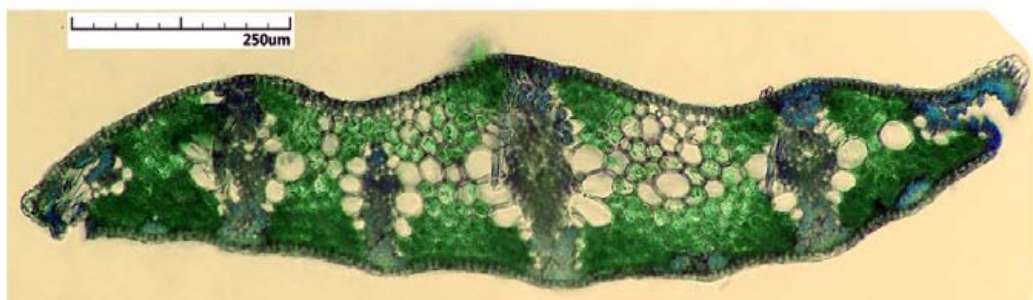
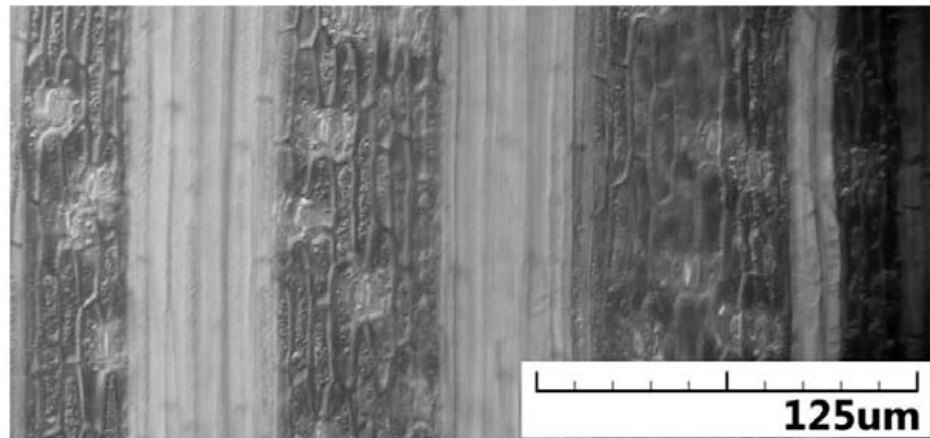
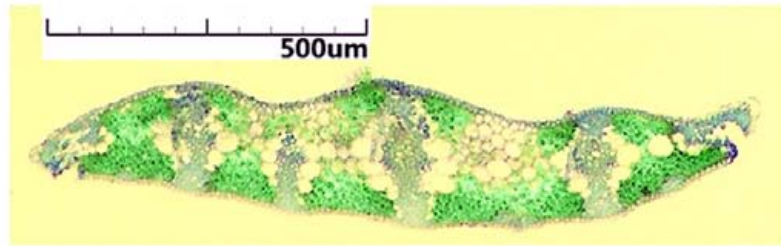




*L. glauca* (Broadleaf) 61207.1

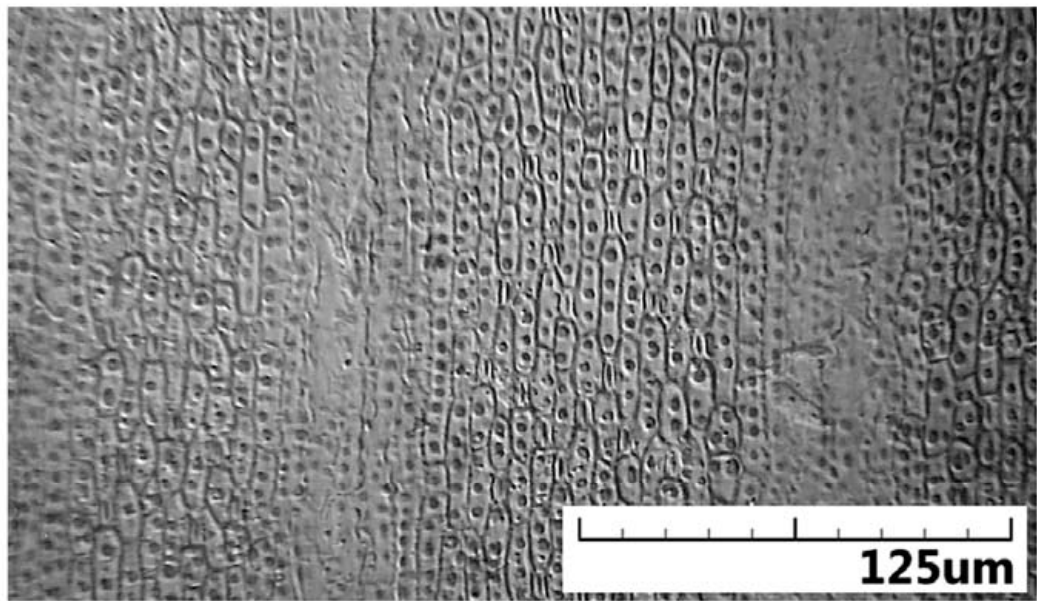
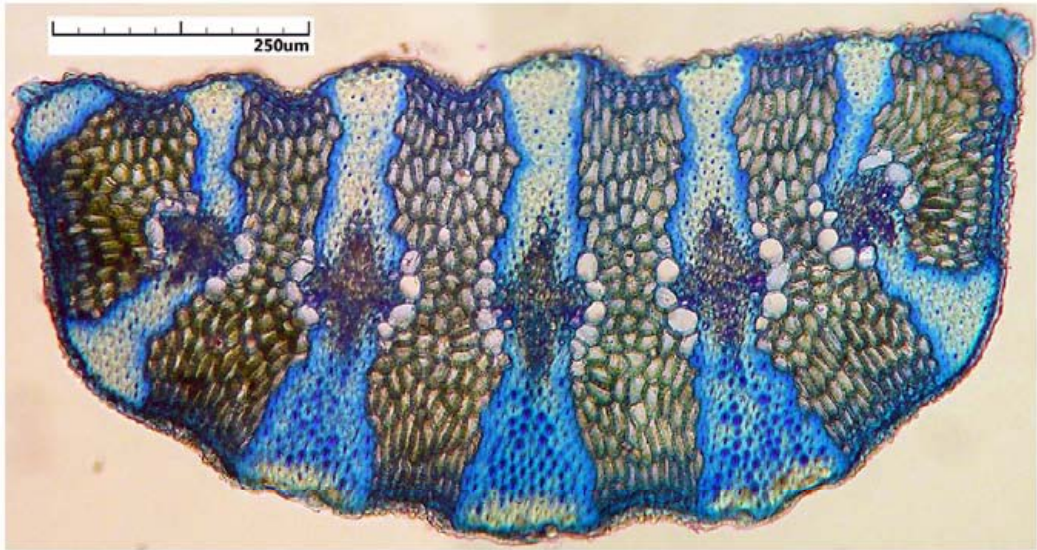


*L. glauca* (Potato Point) 70501.5



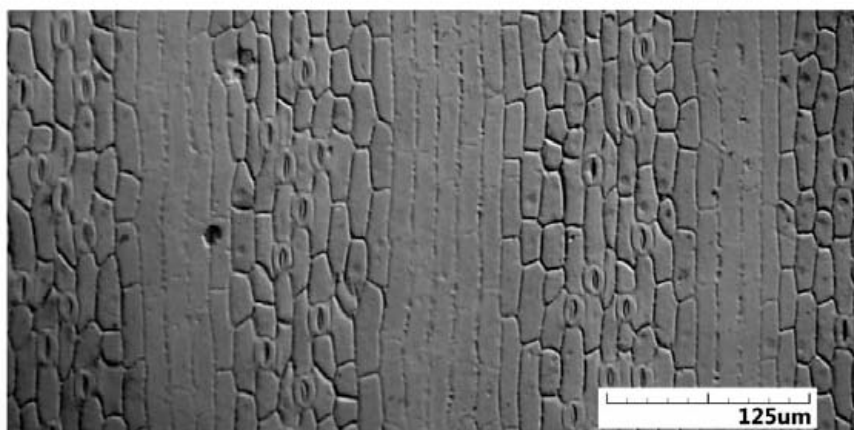
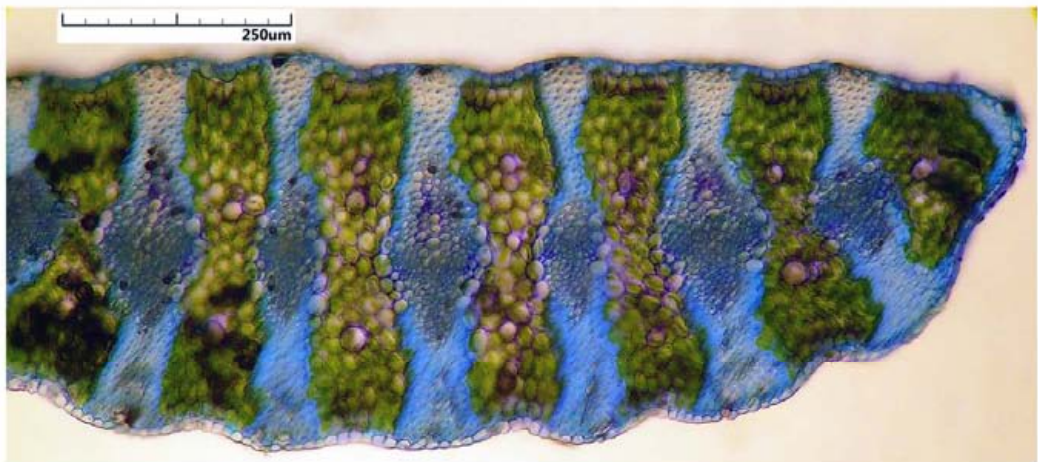
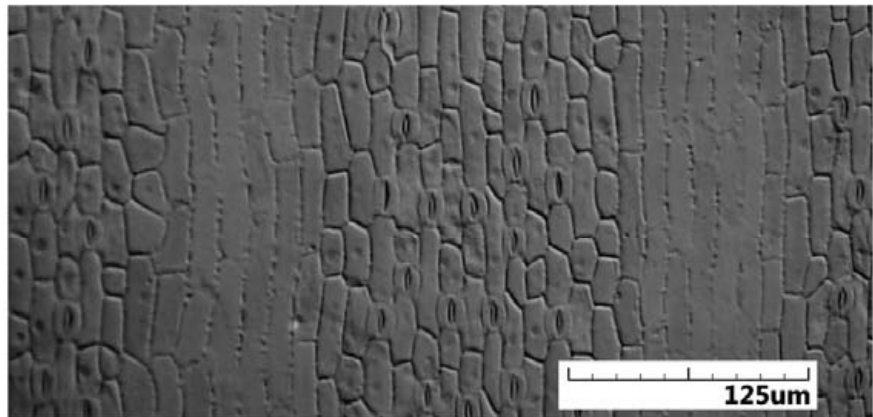
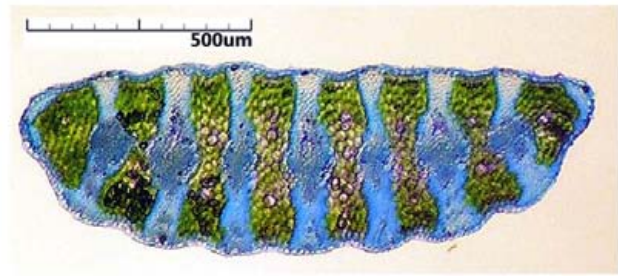


*L. mucronata* 70122.2

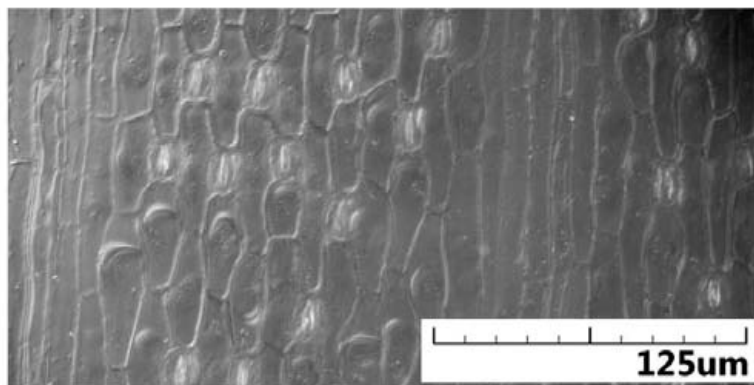
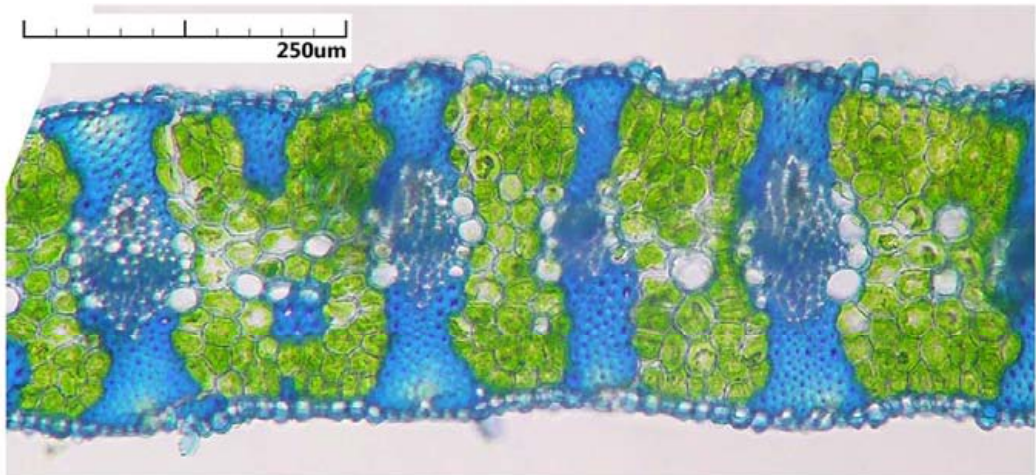
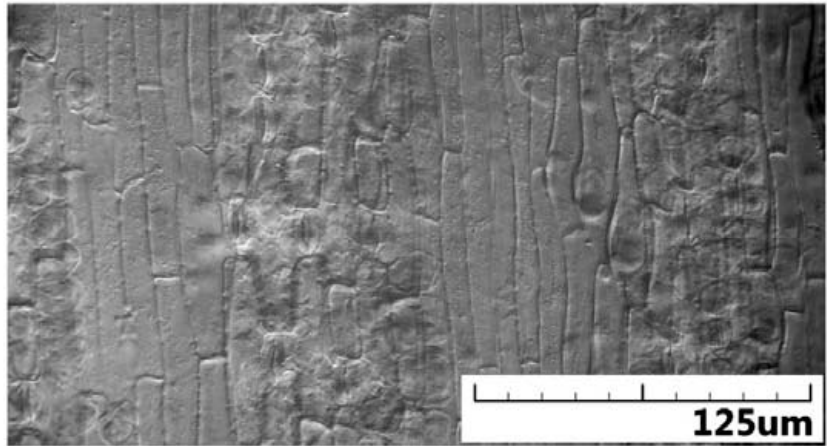
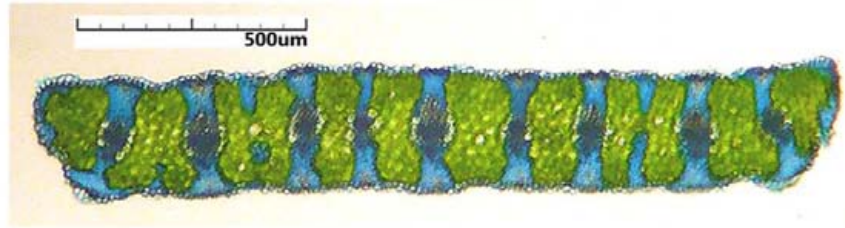




*L. nana* 70102.1

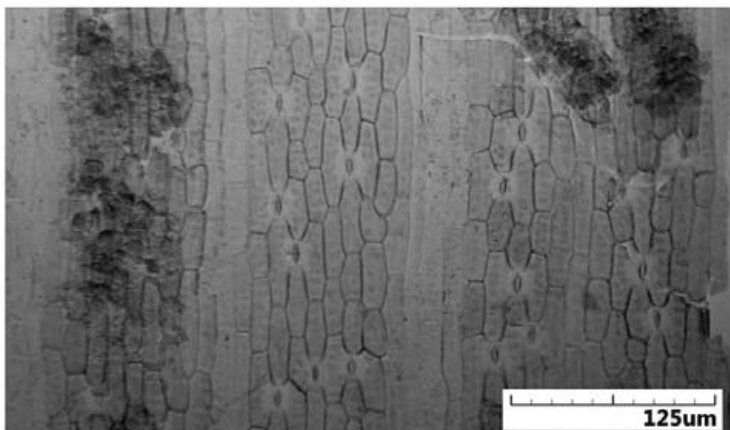
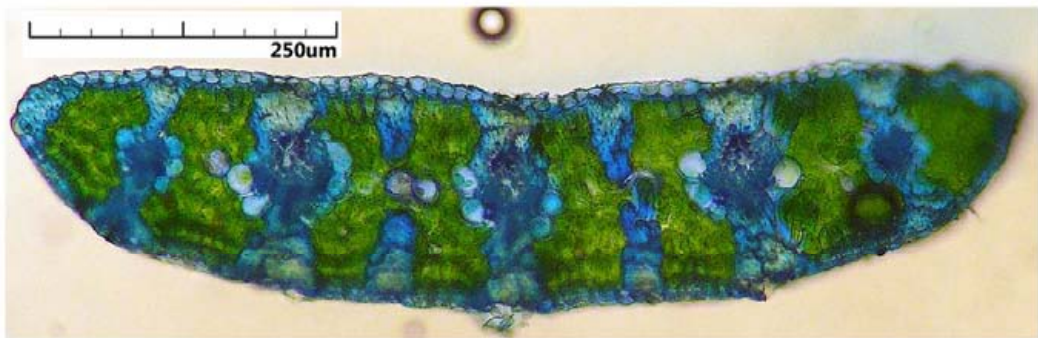
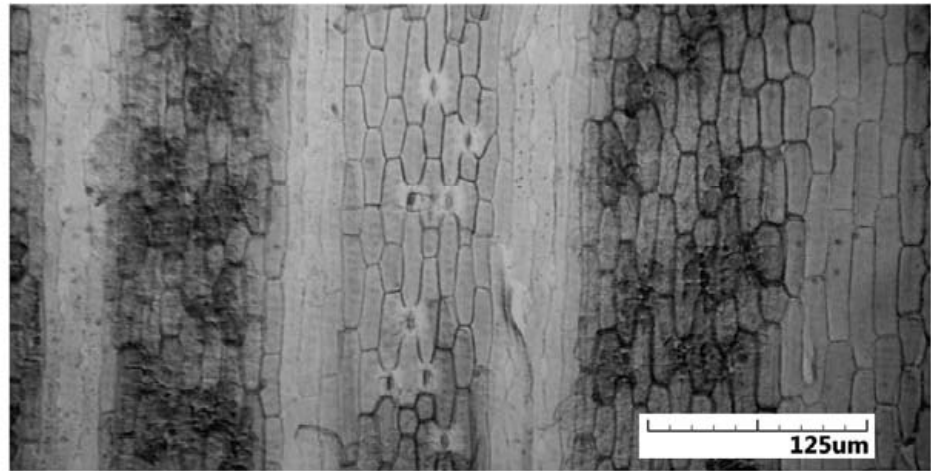
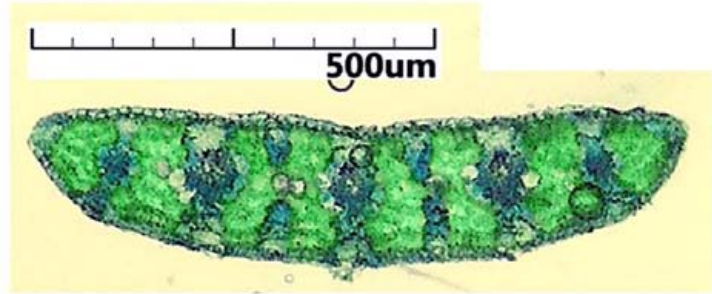


*L. nana* (SE-SA) 70704.2

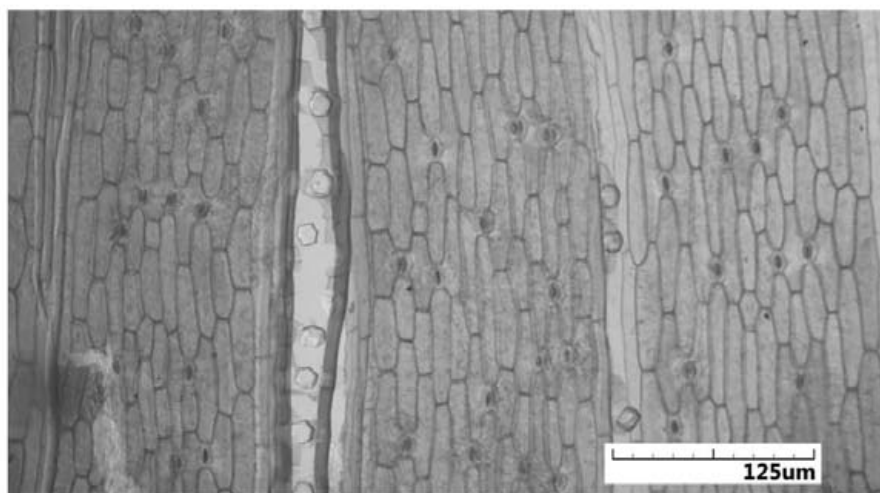
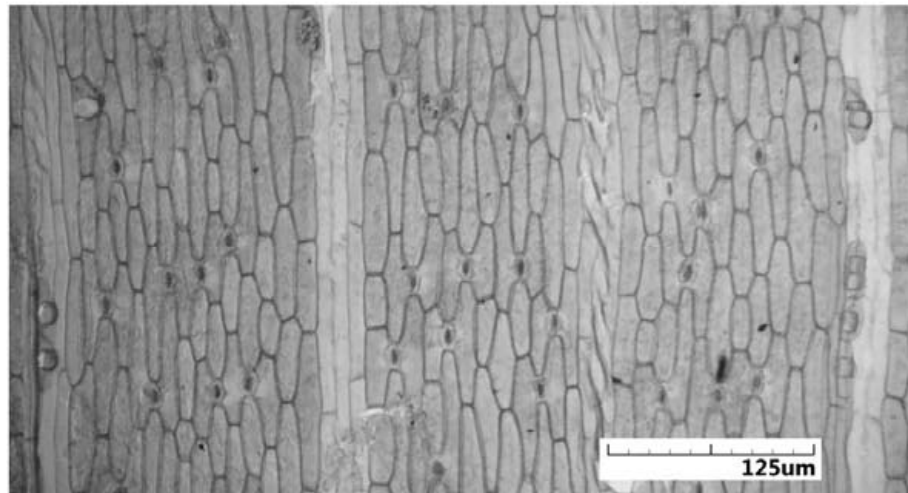




*L. obliqua* 61130.2

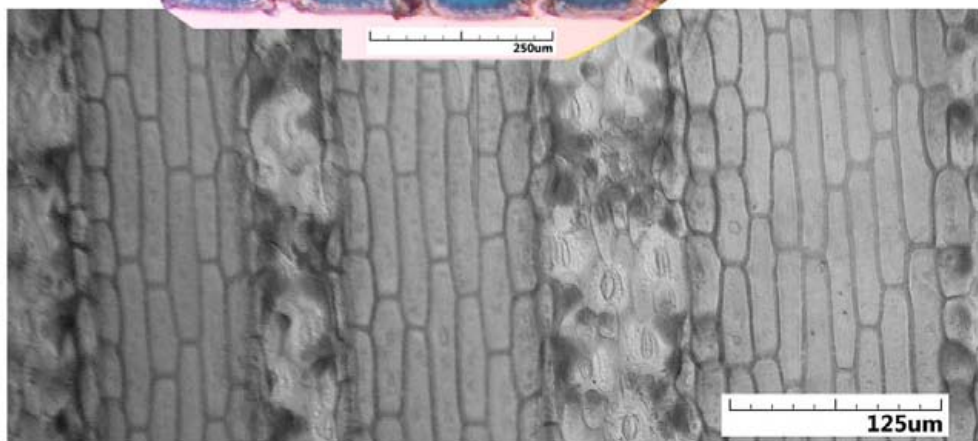
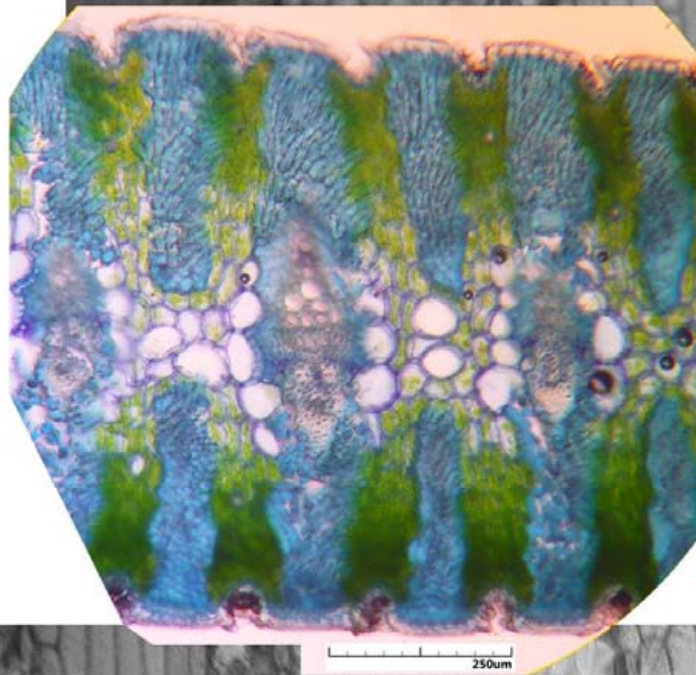
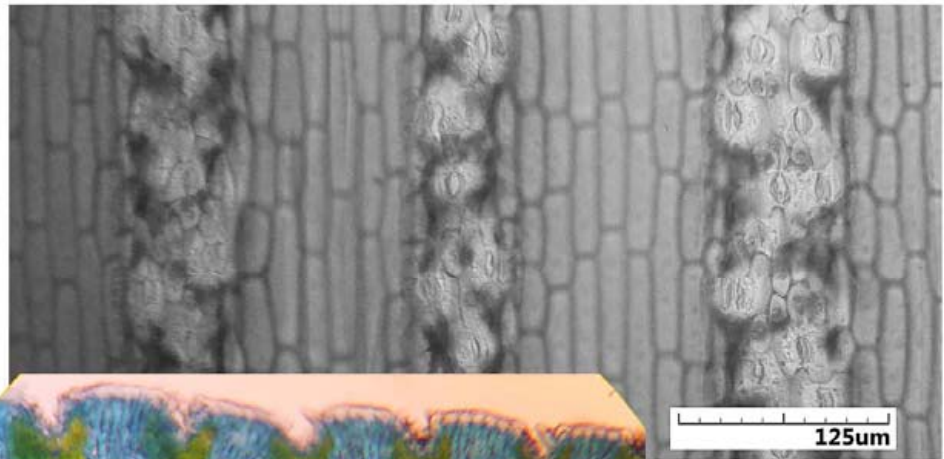
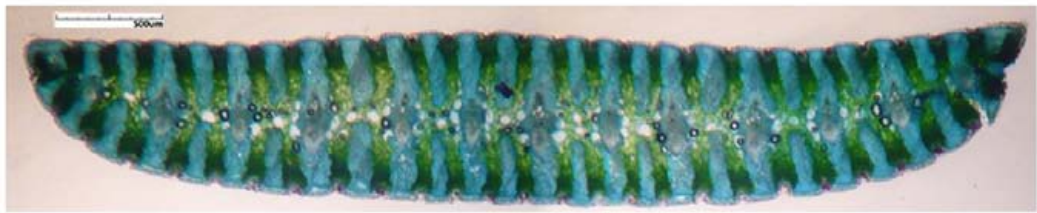


*L. obliqua* (ACT) 70509.4



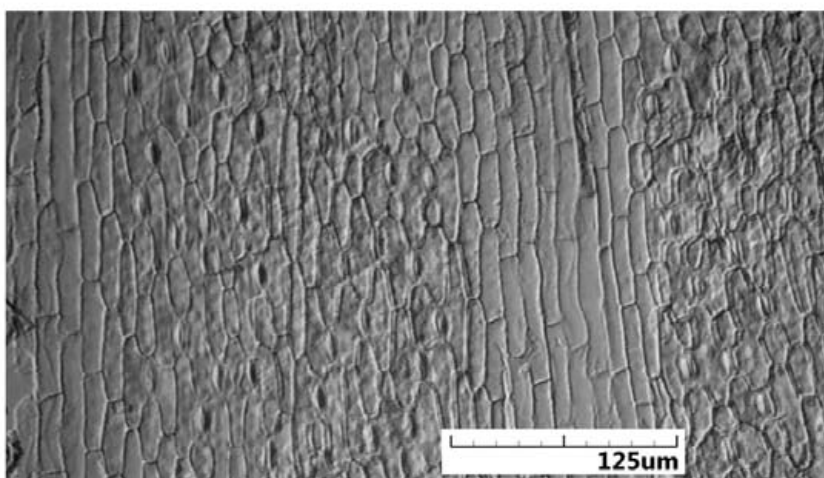
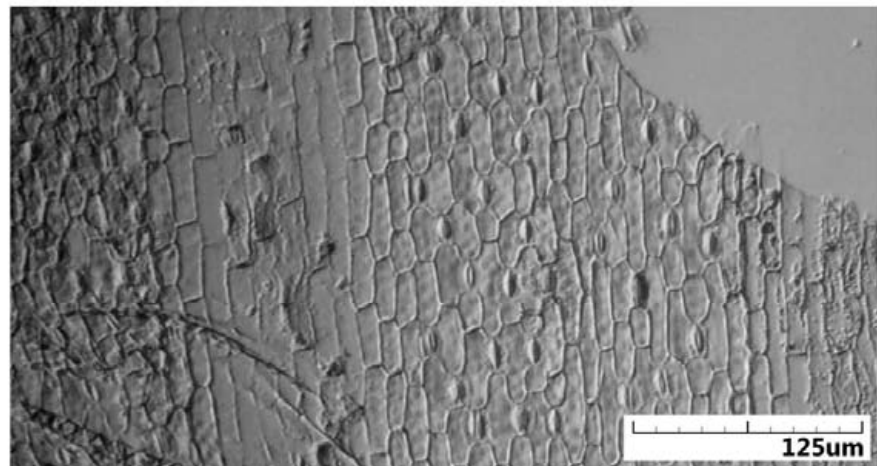
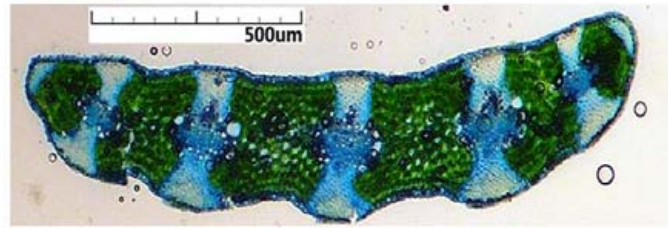


*L. rupestris* 70617.4





*L. suaveolens* 61212.2



*L. suaveolens* (Northern Sandplains) 70614.6

