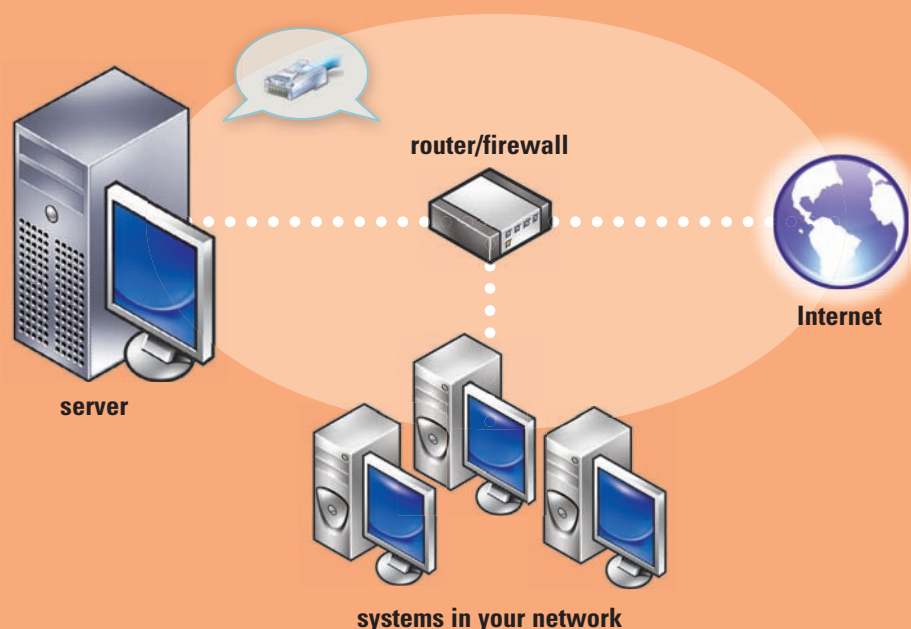




Connect Your Server to the Network

Before you begin, ensure that you have the product key, a router with firewall capability, and network cables.

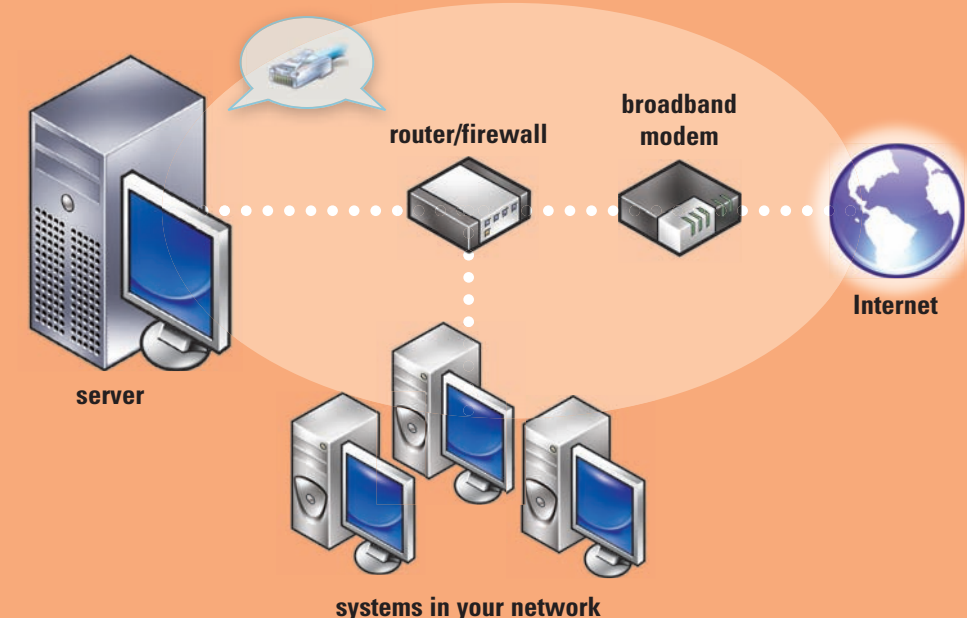
1. Plug one end of a network cable into the network adapter on your server and the other end into the internal (local) interface on your router.
NOTE: Ensure that the **link** light on the network card is illuminated through the entire installation. The network cable must remain connected.
2. Verify that your network hardware (such as your router) is turned on and is properly connected to the Internet.



Common Networking Devices

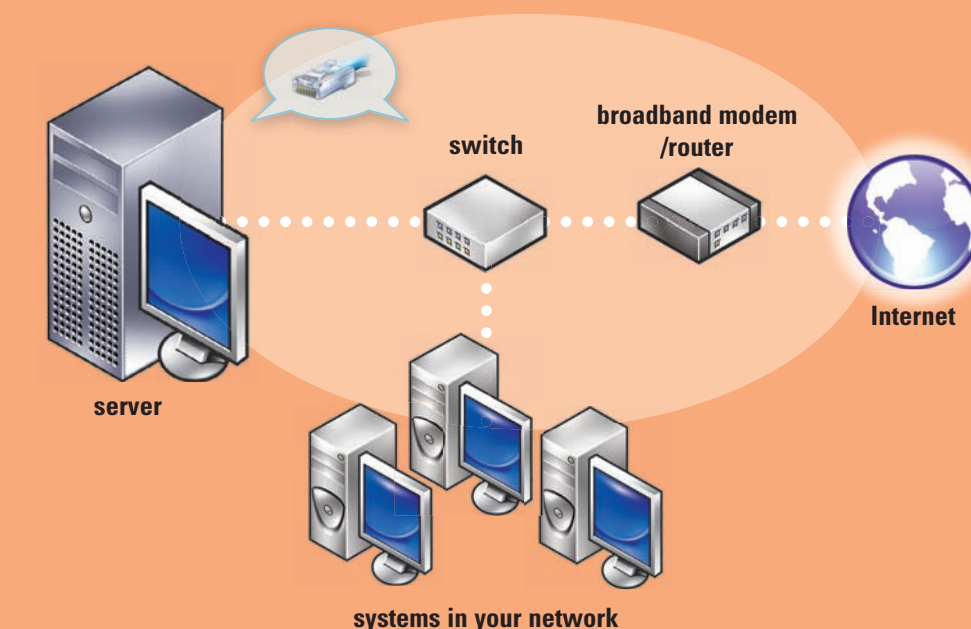
Broadband modem	Enables your network to connect to the Internet through your Internet service provider (ISP).
Firewall	Helps secure your local network from unauthorized access from the Internet.
Router	Sends, or routes, information between your network and another network, such as the Internet.
Switch	Provides additional network connection points for computers and for other devices.

Network With Separate Router and Modem



Network With Switch and Combined Router/Modem

For more information about connecting and setting up the router, see the Microsoft® website at <http://go.microsoft.com/fwlink?LinkId=106133>.



connecting...

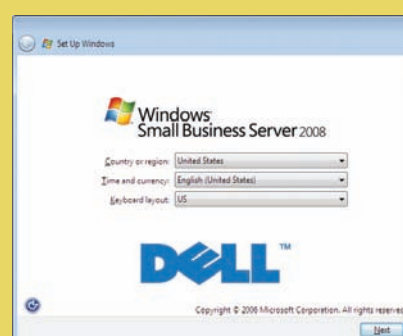
Completing Setup

Before you turn on your system for the first time, set up your server as shown in the above section, and then perform the following steps. For more information on network setup, see the Microsoft® website at <http://go.microsoft.com/fwlink?LinkId=106133>.

Turn on Your System

Your Dell™ system is pre-installed with Microsoft Windows® Small Business Server 2008.

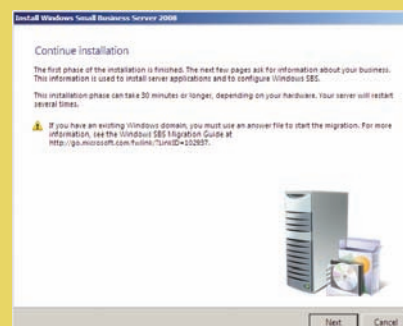
1. Turn on your system. The **Regional Setting** screen is displayed. Click **Next**.



The system initializes. This process takes a few minutes.

Continue Installing

1. Install updates.
2. Enter your company information when prompted to customize the system.

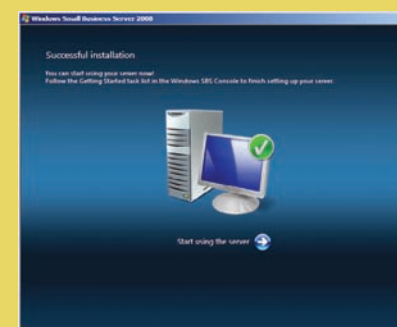


NOTE: Depending on your hardware configuration, it may take 30 minutes or more to customize the installation. The system restarts several times.

configuring...

Finish Installing

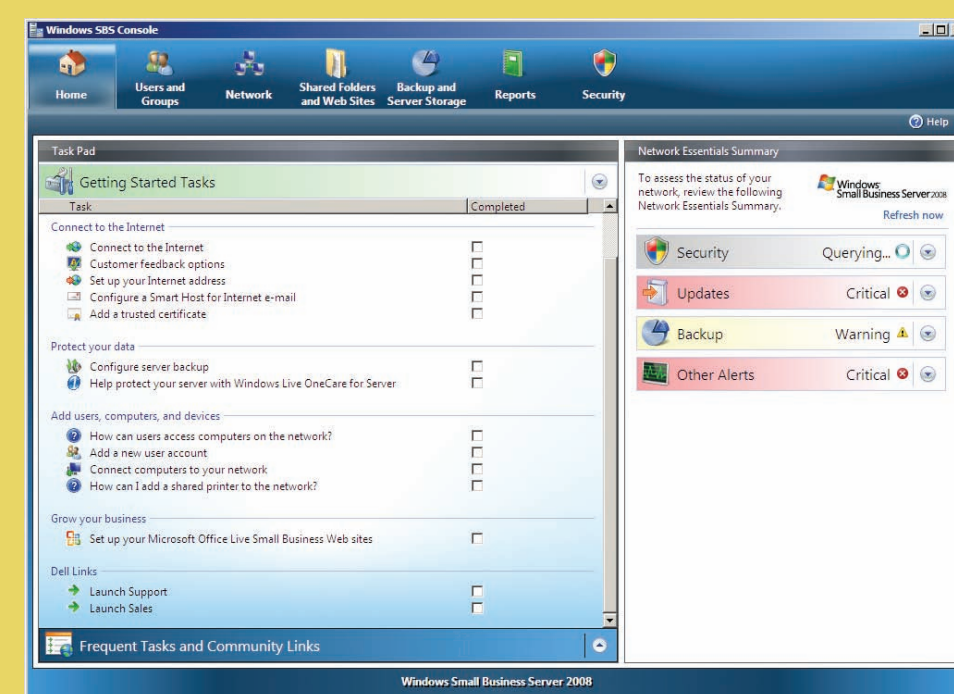
You can start using your system now. The **Windows SBS Console** displays the **Getting Started Tasks** list. Complete the tasks to finish setting up your system.



Complete the tasks in the **Getting Started Tasks** section immediately after you install Windows Small Business Server 2008.

NOTE: Your factory installed system has the Exchange data folder, the SharePoint data folder, and the Windows Update Repository folder in an additional hard drive partition for better performance and reliability.

Configure Your Server and Your Network



Connecting to the Internet

In the **Getting Started Tasks** section, click **Connect to the Internet** to configure your system and network for Internet connectivity.

Protecting Your data

In the **Getting Started Tasks** section, click **Configure server backup** to configure and manage your system backup and **Windows Live OneCare** (optional).

Adding Users, Systems, and Devices

In the **Getting Started Tasks** section, click **Add a new user account** to enable users, systems, and devices to access resources on your system. The **Add a new user account** section also provides information on adding a shared printer to your network.

Growing Your Business

In the **Getting Started Tasks** section, click **Set up your Microsoft Office Live Small Business Websites** to create a professional website, sell online, and attract new customers.

NOTE: Microsoft Office Live Small Business may not be available in all geographic locations.

Getting Help

- For information about installing your new system, completing tasks in the console, or using the productivity tools for the network, see the Online Help.
- For more information on Windows Small Business Server 2008, refer <http://www.microsoft.com/windowsserver/essential/sbs/default.aspx>. For technical information refer <http://go.microsoft.com/fwlink?LinkId=104574> or <http://go.microsoft.com/fwlink?LinkId=104575>
- If at any time you do not understand a procedure described in this document or if your system does not perform as expected, Dell provides a number of tools to help you. For more information about these help tools, see the **Getting Help** section in your system's *Installation and Troubleshooting Guide* or *Hardware Owner's Manual*.
- Technical information, documentation for your system, and the latest file downloads are available at the Dell Support website at support.dell.com. For additional information, refer to www.dell.com/ostechsheets and for Power Solution articles, refer to www.dell.com/powersolutions.
- Dell Community forum: <http://www.dellcommunity.com/supportforums/>

To reinstall your operating system, use the *Dell Systems Management Tools and Documentation* media. However, it is not recommended to reinstall the operating system unless advised by Dell support.



helpful info...

Premium Edition

Windows Small Business Server 2008 Premium Edition includes a second server that is based on Windows® Server 2008 Standard Edition technologies and a copy of Microsoft SQL Server 2008 Standard Edition for Small Business. Windows® Server 2008 Standard Edition technologies and Microsoft® SQL Server® 2008 Standard Edition comes in both x86 (32-bit) and x64 versions. You can use the x86 version of the operating system and Microsoft SQL server if a particular application requires it. The product key for each of these is provided with the respective media. The reference materials and operating system media for the second server is shipped with the first server.

Existing Server Migration

If you already have a Windows domain, you can migrate the information on your existing system to the new system..

NOTE: You must collect specific information before you can migrate to the new server. For more information about migration, see the Microsoft website at <http://go.microsoft.com/fwlink?LinkId=106133>.

Trial Services

Windows Small Business Server 2008 provides the following Microsoft services trial versions:

- **Forefront Security for Exchange Server**—120-day trial
- **Windows Live OneCare for Server**—120-day trial

NOTE: Windows Live OneCare for Server may not be available in all geographic locations.

If you have not installed the trial version, you can use the Windows SBS Disk 2-Component Technologies for Server Repair to install the trial versions later. For more details on trial version support information, see www.microsoft.com.

Requirements for Client Access Licenses

Each user or system that accesses your network must have a client access license (CAL) for Windows Small Business Server 2008. Your Dell system with Windows Small Business Server 2008 is pre-installed with five CALs. If you need to purchase additional licenses, contact your Dell account representative or visit Software and Accessories section in www.dell.com.

Location of Product Key

Windows® Small Business Server (SBS) 2008 comes with a product key and a virtual key. The virtual key is used in virtual operating system environments. For more information about using your virtualization product key, see the Microsoft website at <http://go.microsoft.com/fwlink?LinkId=117792>.

NOTE: The two product keys for Windows Small Business Server 2008 Premium Edition are printed on the COA label, the virtual key for Windows Small Business Server 2008 Premium Edition and product key for Microsoft SQL Server 2008 Standard Edition for Small Business is in the media case.

Location of the Product Key in Windows SBS 2008 Standard Edition



Information in this document is subject to change without notice. © 2008 Dell Inc. All rights reserved.

Reproduction of these materials in any manner whatsoever without the written permission of Dell Inc. is strictly forbidden. Dell and the Dell logo are trademarks of Dell Inc.; Microsoft and Windows are either trademarks or registered trademarks of Microsoft Corporation in the United States and/or other countries. Dell Inc. disclaims any proprietary interest in the marks and names of others.

July 2008

