

Q.

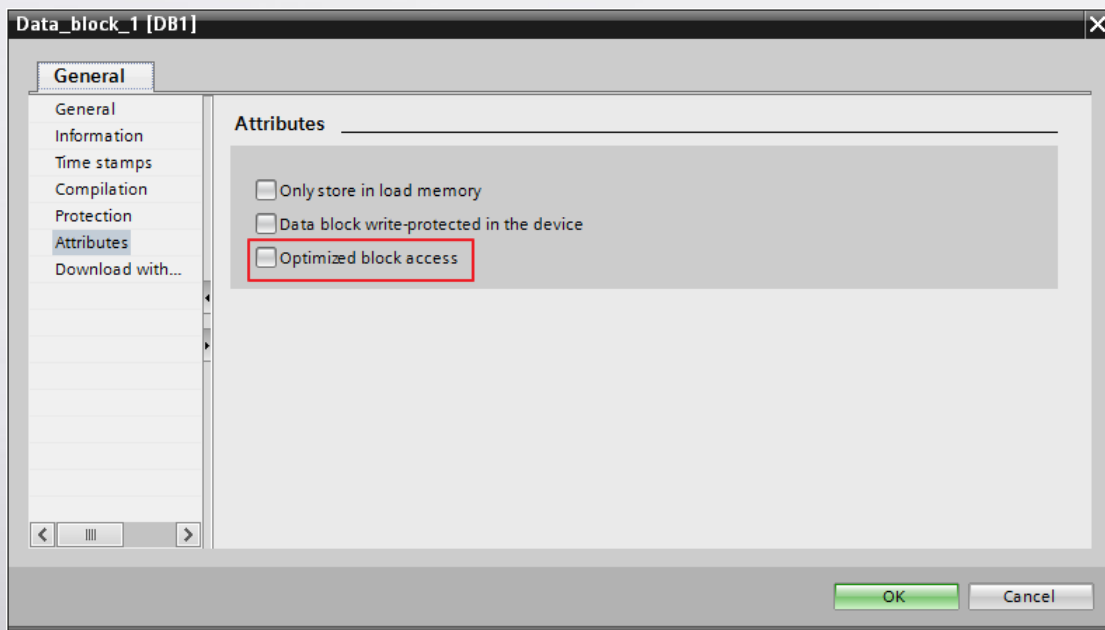
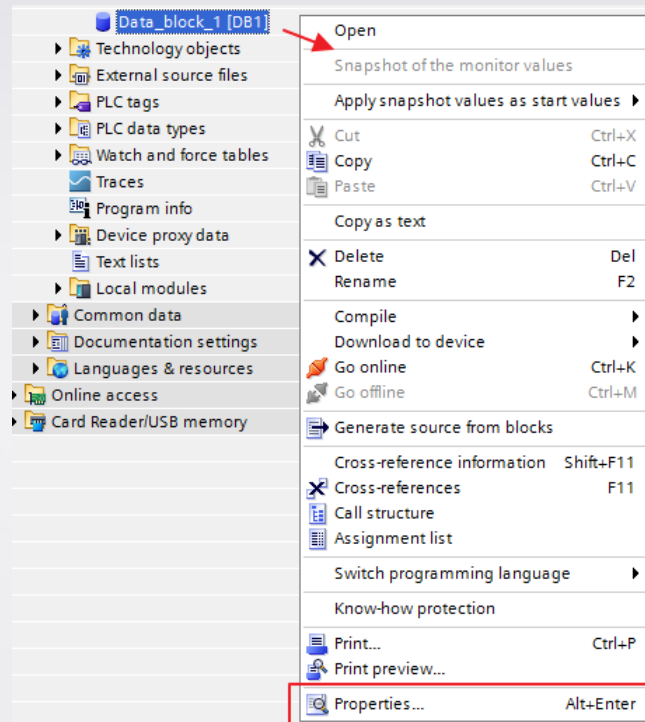
How to convert from S7-1200/1500 (Symbolic Addressing) to Siemens S7-1200/1500 (Absolute Addressing)?

The following steps explain how to change the driver from Siemens S7-1200/1500(Symbolic Addressing) to Siemens S7-1200/1500(Absolute Addressing). After changing the driver, users can still use the tag names of Symbolic Addressing driver for objects in EasyBuilder Pro.

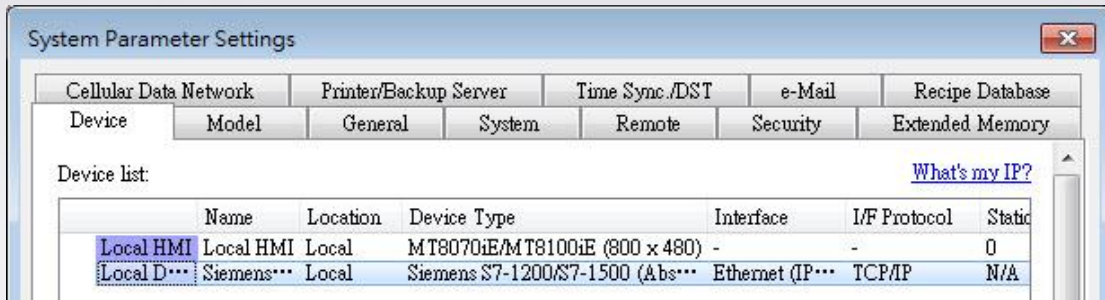
A.

Steps to change from Symbolic to Absolute:

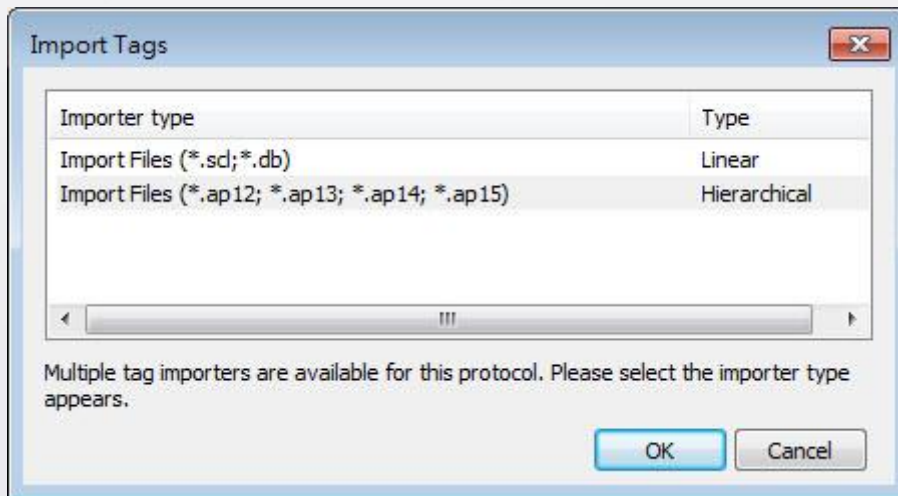
- Step 1.** In TIA PORTAL, please **deselect** this option for each Data Block: [DB UTILITAIRES] » [Attributes] » [Optimized block access]. Please note that deselecting this option is necessary for every Data Block.



Step 2. In EasyBuilder Pro's device list, change from Siemens S7-1200/S7-1500 (Symbolic Addressing) (Ethernet) to Siemens S7-1200/S7-1500 (Absolute Addressing) (Ethernet) driver, and configure the connection parameters.



Step 3. Click [Import Tags] and import TIA PORTAL project again.



Step 4. After import, the following message shows, please select (N).



Step 5. The object addresses will be converted automatically.

