

FreeCOM
CLASSIC
DVD RW



www.freecom.com

Rev. 328



Dear user!

welcome to the installation of your **Freecom Classic DVD RW**. Before installing the drive, please read through the following points regarding its compatibility with your system.

Freecom Technologies • Germany
www.freecom.com

Warning !

All rights reserved. The products named in this manual are only used for identification purposes and may be trademarks or registered trademarks of the respective companies. This device was designed for home or office use.

Warning! This device is equipment complying with EN55022 class A. This equipment can cause radio disturbances in a residential area. If this is the case, the user has to take appropriate measures and assume all responsibility and costs for. It may not be used near or with any life-sustaining systems.

Freecom Technologies is not liable for any damages that may occur from the use of a Freecom system. All rights reserved. We reserve the right to upgrade our products in keeping with technological advances.

USER'S MANUAL

General information Page 4

CHAPTER 1:

Start Up - Hardware installation Page 7

CHAPTER 2:

Driver Installation Page 8

CHAPTER 3:

Installing the Writing Software Page 11

CHAPTER 4:

Trouble shooting - General problems Page 12

General information

Reliable performance of the **Freecom Classic DVD RW** cannot be guaranteed for configurations that do not meet the following requirements:

Hardware Requirements

To use the Freecom Classic DVD RW, you must have a computer with the following minimum requirements:

- Pentium III, Celeron 700 MHz or faster
- at least 128 MB RAM (256 MB recommended)
- USB interface (USB 1.1 or USB 2.0*)
- at least 400 MB of free hard disk space (5 GB recommended)
- a CD-ROM drive or internet connection for driver installation

Software Requirements

The Freecom Classic DVD RW is setup for use with the following operating systems:

- Windows 98SE
- Windows ME
- Windows 2000
- Windows XP

* For maximum performance of the Freecom Classic DVD RW, both computer system and software must support USB 2.0. Connecting the Freecom Classic DVD RW to a USB-1 interface will limit the CD recording speed to 4x. DVD recording is not reliable through USB-1.

Shipping list

Every Freecom Classic DVD RW is shipped complete and ready to install. The package includes:

- an external DVD RW drive
- a USB port connecting cable
- a power adapter
- a manual & application CD, including CD & DVD writing software and DVD movie playback software
- 1 CD-R media / 1 DVD+R

Media Formats

Supported media DVD+RW version:

- DVD+RW
- DVD+R
- CD-RW
- CD-R
- MiniCD (8cm)
- MiniDVD+RW (8cm)

Supported media DVD+/-RW version:

- DVD+RW
- DVD+R
- DVD-RW
- DVD-R
- CD-RW
- CD-R
- MiniCD (8cm)
- MiniDVD+RW (8cm)

DVD movies created on this DVD recorder can be viewed on nearly all DVD players and DVD-ROM drives.

Precautionary Measures and General Notes

- After transport, particularly at low outside temperatures, condensation can form which can lead to a malfunctioning. For that reason, you should not begin operation until the drive and CDs/DVDs have reached room temperature.
- Operate the Freecom drive only in a horizontal position, to prevent damage to the media or mechanical parts.
- Operate the device only at temperatures ranging from 10 - 45 °C.
- Do not use the device in a dusty and humid environment.
- Protect the drive from shocks and other mechanical effects!
- The device should not be operated in the vicinity of strong electromagnetic radiation sources (loudspeakers, mobile telephones etc.).
- Due to the high data transfer rates, the cable length should not exceed 1 m. Error-free transmission cannot be guaranteed for longer cables.
- The Classic DVD RW is USB-2 compliant. While USB-2 supports CD recording speeds higher than 4x, if this drive is connected to a USB 1.1 port the maximum CD recording speed is 4x. Your recording software may allow you to select a higher recording speed but doing so may result in buffer-underrun errors. To avoid this, we recommend that the CD recording speed is set to 4x when the drive is connected to a USB 1.1 interface.

CHAPTER 1: Start Up - Hardware installation



1. Connect the USB cable to the Freecom device.
2. Connect the power connection to the Freecom drive.
3. Then insert the power adapter of the Freecom device into a power socket.
4. Connect the USB connection to your computer.
5. You can now begin software installation.

Note: You can plug the USB cable into your computer and unplug it while the computer is running ("hot plug & play"). Remove the cable from the computer when doing so, never remove the cable from the drive when the computer is on.

Note: In the event of no sound when an audio CD is placed into the Freecom Classic DVD RW, „Enable Digital CD audio for this CD-ROM device“ from within "Control Panel"- "Multi Media".

CHAPTER 2: Driver Installation

Your Freecom Classic DVD RW is fully backwards compatible with USB 1.1. The installation for USB 1.1 is the same as described below for USB-2.

2.1 Driver Installation under Windows ME, 2000 and XP

Under Windows ME/2000/XP a separate driver is not required. The drivers for Windows ME, Windows 2000 and Windows XP will be installed automatically by the operating system after plugging in the Freecom Classic DVD RW into the USB port of your computer.

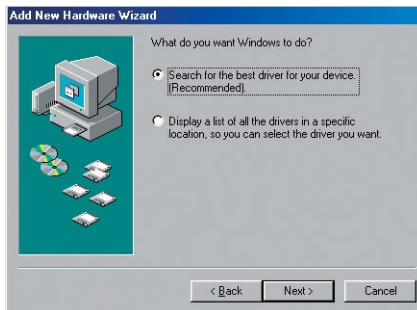
2.2 Driver installation under Windows 98 SE

1. Insert the Freecom "Manual & Application" CD into the CD-ROM drive.
2. Connect your Freecom Classic DVD RW to the USB-2 Host Controller or USB 1.1 connector.
3. The "Add New Hardware Wizard" opens and a "USB 2.0 Device" (USB-2 Host Controller) or a "USB2-IDE Controller" (USB 1.1 connector) is found.



Click on "Next".

- In the next window select "Search for the best driver for your device. (Recommended)".



Click on "Next".

- Make sure that the checkbox "CD-ROM drive" is activated in the next window.



Continue by clicking on "Next".

- The Hardware Wizard finds a "Freecom USB 2.0 Drive".



By clicking on "Next" the necessary files will be installed. Afterwards click on "Finish" to complete the installation.

2.3 Allocation of the drive letter to the Freecom drive

After successfully completing the installation of the Freecom Classic DVD RW, a new drive letter is assigned automatically (the first available letter after the internal hard drives). This can shift the drive letter of an internal CD-ROM drive (for example, 'D' to 'E'). If this leads to problems, it is possible to change the drive letter assignment as follows:

- under Windows 98 / ME:

1. Click on "Start" - "Settings" - "Control Panel".
2. Click on "System".
3. Select "Device Manager" and click on "CD-ROM" or "Drive".
4. Click on the Freecom device, then on "Properties" - "Settings". (The currently assigned drive letter as well as the reserved drive letters will then be displayed.)
5. Under "Reserved Drive Letter" enter a drive letter, for example "F" for the Freecom Classic DVD RW as the "First drive letter" and "F" again as the "Last drive letter".
6. Confirm your selection with "OK". When you restart your computer, the Freecom Classic DVD RW will be assigned the letter F in "My Computer".

- under Windows 2000 / XP:

1. Click "Start" - "Settings" - "Control Panel" - "Administration" - "Computer Administration".
2. Click "Disk Maintenance" and then select the Freecom drive.
3. In the "Operation" menu ("Action" in Windows XP), select All Tasks and then click Change drive letter and path.
4. In the next window, click "Change" and select a drive letter in Assign the following drive letters.
5. Click "Yes" to confirm your change.

CHAPTER 3: Installing the Writing Software

After installing the USB drivers, your Freecom Classic DVD RW is now able to read CD-ROMs and DVD-ROMs.

To record a blank CD or DVD, you must first install the writing software. We recommend using the software which has been provided with your drive.

Insert the Freecom "Manual & Application" CD into the CD-ROM drive and click on the "Install Roxio Easy CD & DVD Creator" button.



Follow the instructions on screen.

Note: If you wish to use other software, please find out from the supplier whether his products support the Freecom Classic DVD RW.

CHAPTER 4: Trouble shooting - General problems

If you still have problems getting your Freecom drive to function properly despite having installed it correctly, then please check the following items:

Hardware requirements:

- Does your system meets the hardware requirements (see page 4)?

Connecting the Freecom device:

- Is the cable connected correctly to your computer and the Freecom device? Check whether cable is plugged in correctly. The cable must firmly in place!
- Does the device have a power supply? Determine if the media can be ejected and if the device is getting power when the system boots.

System settings:

- Disable the system's power management if present. The manual of your operating system will guide you.

Recording speed / buffer underrun:

- The Classic DVD RW is USB-2 compliant. While USB-2 supports recording speeds higher than 4x, if this drive is connected to a USB 1.1 port the maximum recording speed is 4x. Your recording software may allow you to select a higher recording speed but doing so may result in buffer-underrun errors. To avoid this, we recommend that the recording speed is set to 4x when the drive is connected to a USB 1.1 interface.