



**NOBO**

projects the  
big picture

- Brighter
- Clearer
- Lighter
- Quieter





# NOBO

## Quantum

Quantum is ergonomically designed for flexible use and is available in a choice of 3 models. All feature twin lamps with easy change facility.

- Projects bright and sharp images, even in daylight conditions
- Ultra compact and lightweight design
- Easily portable with moulded carry grips feature
- Simple function controls and quiet operation
- Compact head to minimise impact on audience
- Storage cavity for 4.5 metre cable which is detachable for safety
- Folding arm which can be removed and stored inside the unit



folding arm



detachable head and arm stores in unit



BRIGHTER · CLEARER  
LIGHTER · QUIETER








# your big

## Choosing the Right Projector

Introducing the new generation of Overhead Projectors from Nobo, the leading name in presentation products. Our new Quantum range offers a choice of models to suit your business needs, giving you guaranteed picture clarity and brightness with the added benefits of quiet operation and lightweight portability.

Choose the Quantum model which is right for your environment and usage from the selection guide below.

	 <b>Quantum 2521</b>	 <b>Quantum 2523</b>	 <b>Quantum 4023</b>	 <b>Quantum Portable 2523T</b>	 <b>Quantum Portable 4013M</b>
<b>Product Code (240v)</b>	<b>1900563</b>	<b>1900567</b>	<b>1900571</b>	<b>1900583</b>	<b>1900592</b>
<b>Environment/usage</b>					
Small/medium room Daylight	•	•	•	•	•
Medium/large room Daylight			•	•	•
Regular mobility - in-house or off-site				•	•
Recommended for frequent use	•	•	•	•	•
Black & white text, limited colour	•	•	•	•	•
Detailed spreadsheets, extensive colour		•	•	•	•
<b>Features</b>					
Lamp wattage	24v/250w	24v/250w	36v/400w	24v/250w	240v/400w
Spare lamp re-order code	33730957	33730957	33734535	33730957	33738122
Lumen output	2200	2500	4200	2500	2700
Lamp changer	•	•	•	•	
Weight	8.15kg	8.45kg	9.7kg	5.6kg	3.3kg
Suitable for LCD panel			•		
Objective lens	Singlet 317mm	Triplet 317mm	Triplet 317mm	Vari-focal Triplet 260-300mm	Vari-focal Triplet 260-300mm
Economy switch/circuit			•		
Carry grips	•	•	•		
Hard carrying case				•	•
Fold down arm	•	•	•	•	•
Detachable arm	•	•	•		
Cable storag	In unit	In unit	In unit	In case	In case
Overall size (wxdxh)	384x393x715mm	384x393x715mm	384x393x715mm	325x448x523mm	325x448x523mm
Storage/carrying (wxdxh)	384x520x280mm	384x520x280mm	384x520x280mm	325x548x120mm	325x548x120mm

### The following features are common to all models:

Platform size 285x285mm	Minimum lamp life 50 hours
Glare-free fresnel lens	Safety thermal cut-out switch
Low noise cooling fan	Projection picture size 1x1m to 3x3m

### For Your Peace of Mind

- 12 months parts and labour guarantee with optional year extension, excluding lamps and glass parts
- This is an on site guarantee for UK residents, excluding Northern Ireland
- Product UK manufactured in ISO 9001 accredited production unit
- Full CE approval
- Year 2000 compliant



year warranty

# picture

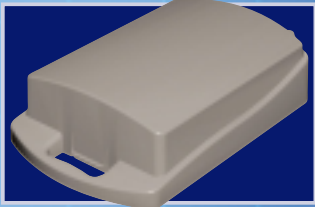
## Quantum Portable

Quantum Portable is perfect for presentations on the move and comes in a choice of 2 models - lightweight or ultra-lightweight.

- Projects bright and sharp images, even in daylight conditions
- Compact and ergonomical modern design
- Easily portable with integral hard carry case and 4.5 metre cable
- Simple function controls and quiet operation
- Folding arm for carrying or storing



folding arm



Hard carrying case



# complete the picture

Nobo offer a comprehensive range of OHP accessories including...



## ◀ Nobo Projection Screens

- *A full range of products from portable to permanently sited, including tripod, wall and electric screens as well as extension brackets.*
- *Available in both matt white and high gain finish.*

## ▶ Nobo OHP Film

- *Dedicated products for every application, from plain paper copiers to the latest laser, inkjet and colour copiers.*
- *Colour coded packs and pictorial symbols make choosing the right film simple.*



## ◀ Nobo Trolleys

- *Adjustable multi-featured trolleys make the versatile Overhead Projector even more adaptable.*

## ▶ Nobo Spare Lamps

- *Fully compatible, quality lamps for every projector in the range, a must when presenting to ensure your presentation is not interrupted by a lamp failure.*



## ◀ Nobo Laser Pointers

- *Pointers give you the opportunity to highlight areas of importance during your presentation.*
- *Full range from basic dot to multi-effect flash and underline functionality.*

For further details, see the Acco 2000/1 Presentation Catalogue

Your local Dealer

### UK Customers

Tel. 0800 252359

Fax. 01296 482204

Email. presentation@acco-uk.co.uk

### Republic of Ireland & Northern Ireland Customers

Tel. (01) 816 4300

Fax. (01) 816 4302

Email. information@acco-rexel.ie



**ACCO EUROPE PLC**  
www.accoeurope.com