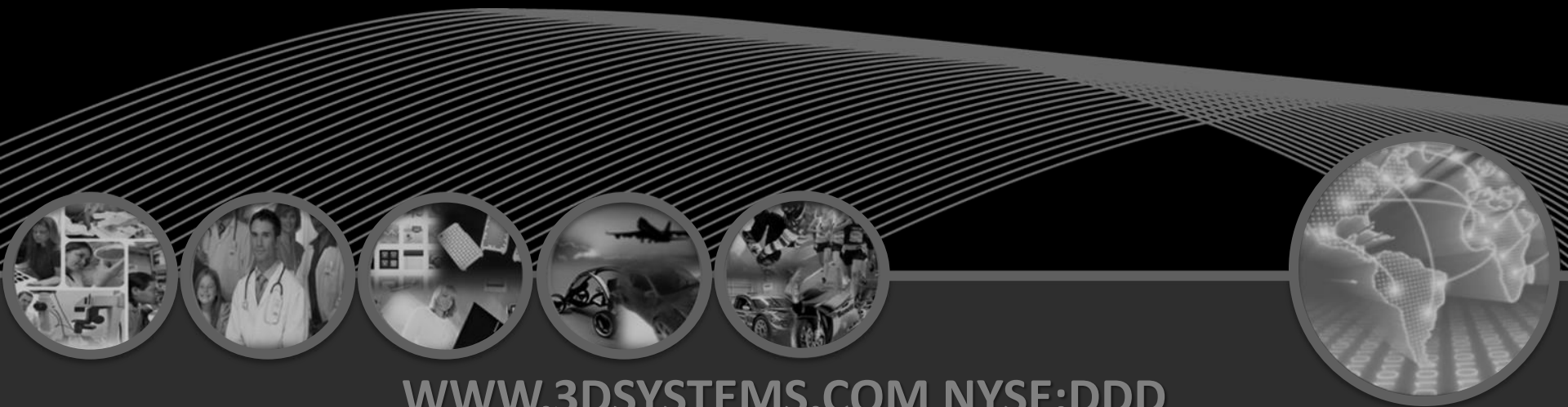




**3DSYSTEMS®**

*CubePro™ 3D Printer*  
*Consumer Solutions Business*

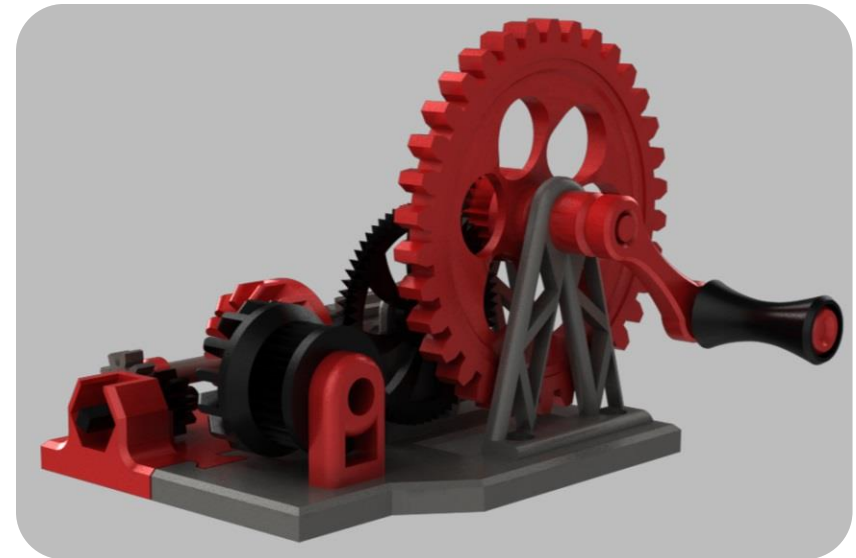


[WWW.3DSYSTEMS.COM](http://WWW.3DSYSTEMS.COM) NYSE:DDD

# CubePro

Professional 3D Printer for large,  
multi-color, multi-material prints

For schools, office & business



**BDSYSTEMS®**

# CubePro Three Models



CubePro  
*Single Jet*

CubePro *Duo*  
*Dual Print Jets*

CubePro *Trio*  
*Three Print Jets*

**BDSYSTEMS®**

# Print Big - Make Precise

**Largest Print Volume** in its class

275mm x 265mm x 240mm

10.8 in. x 10.45 in. x 9.5 in.

**Controlled Print Chamber**

High quality ABS printing

Large accurate reliable prints



**BDSYSTEMS®**

# Print Volume

	X	Y	Z
Single Color	275mm 10.75"	265mm 10.45"	240mm 9.5"
Duo	230mm 9.1"	265mm 10.5"	240mm 9.5"
Trio	185mm 7.3"	265mm 10.5"	240mm 9.5"



# New Durable Engineering Materials

**ABS, PLA, Nylon** print materials

**Nylon & ABS** – Durable, Functional  
& Prototyping Materials

**PLA** - High fidelity and feature detail

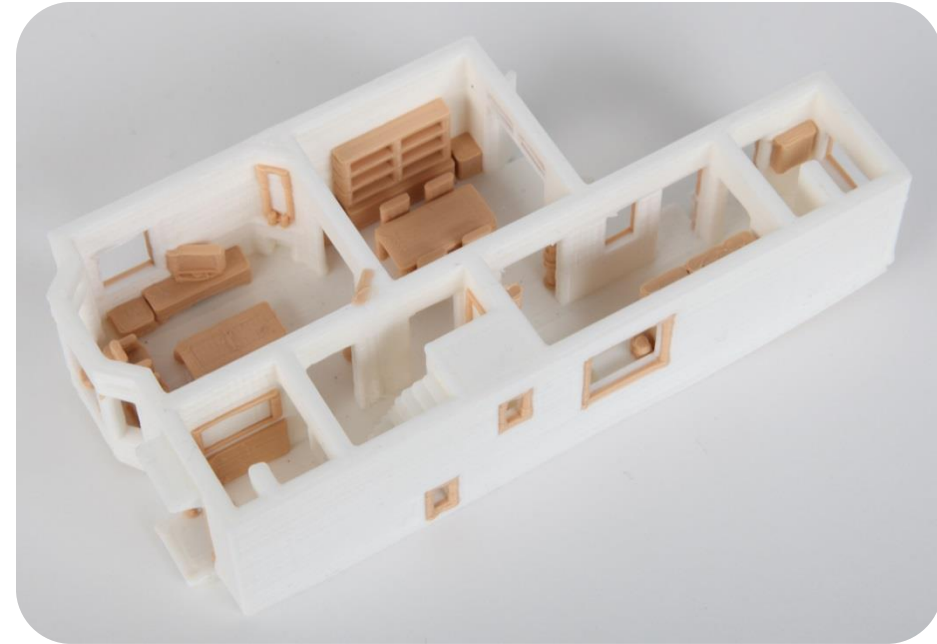
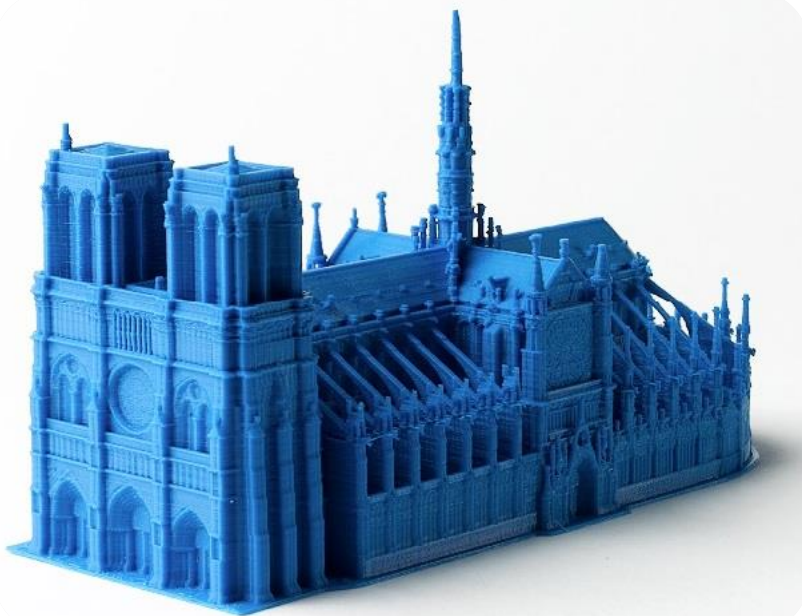
Mix & match up to three  
colors or materials in same print



**BDSYSTEMS®**

# Superior Accuracy & Thinnest Layers

- High accuracy, feature detail & resolution
- Thinnest layers at 3 mil (70  $\mu\text{m}$ ) for smooth surfaces
- Standard prints at 8 mil (200  $\mu\text{m}$ ) & 12 mil (300  $\mu\text{m}$ )
- 2X accuracy compared to sub-3K printers in the market

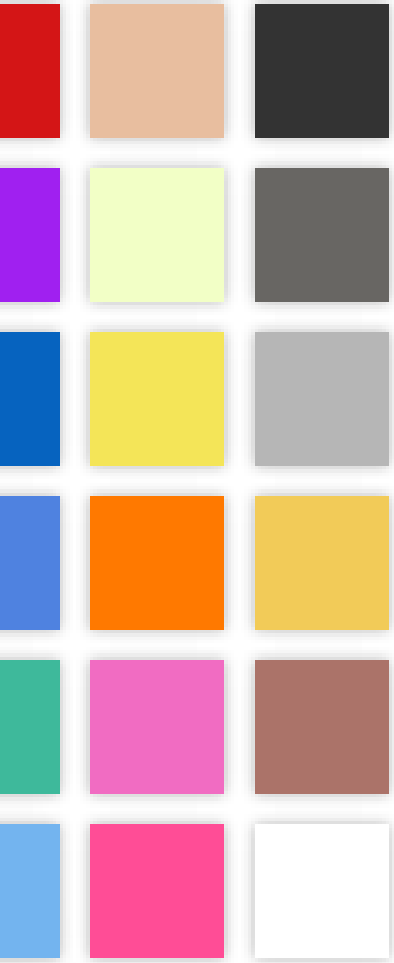


**BDSYSTEMS®**

# Wide Array of Color Choices

25 vibrant print colors in ABS & PLA

Glow-in-the-dark colors for special creations



**BDSYSTEMS®**

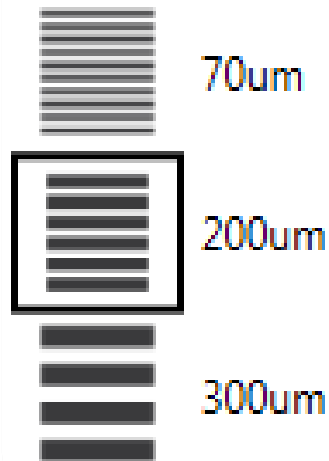


# Professional Printability

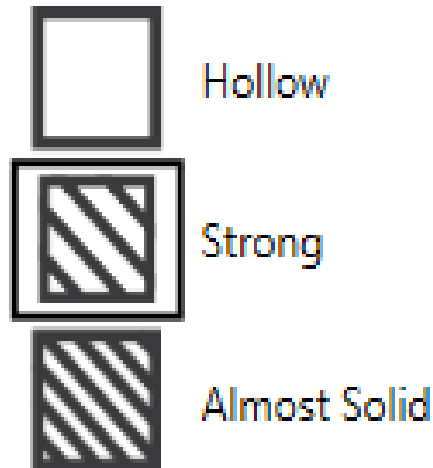
27+ combinations of print & fill modes for maximum print quality & flexibility

Various Print modes available on all materials

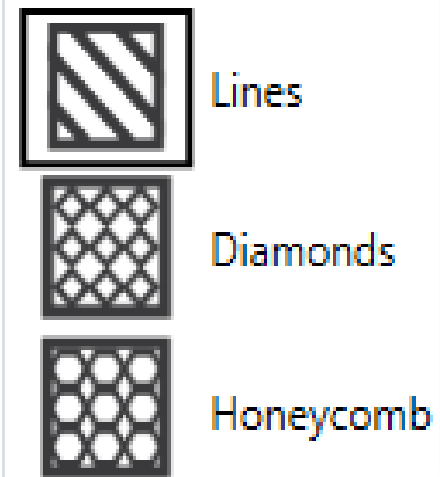
Layer Resolution



Print Strength



Print Pattern



**BDSYSTEMS®**

# Easy To Use

- Wi-Fi Enabled Job Submission
- Simple, intuitive, easy-to-use touch screen based operation
- Easy load cartridges for reliable prints
- Fully automated support generation



**BDSYSTEMS®**

# New Durable Nylon Print Material

## Key Characteristics

- Engineered production plastic material
- Exceptionally durable
- High stiffness, hardness and toughness
- High heat, corrosion and abrasion resistance
- Prints in 200 micron (8 mil) & 300 micron (12 mil) layers
- In **Translucent, White & Black**

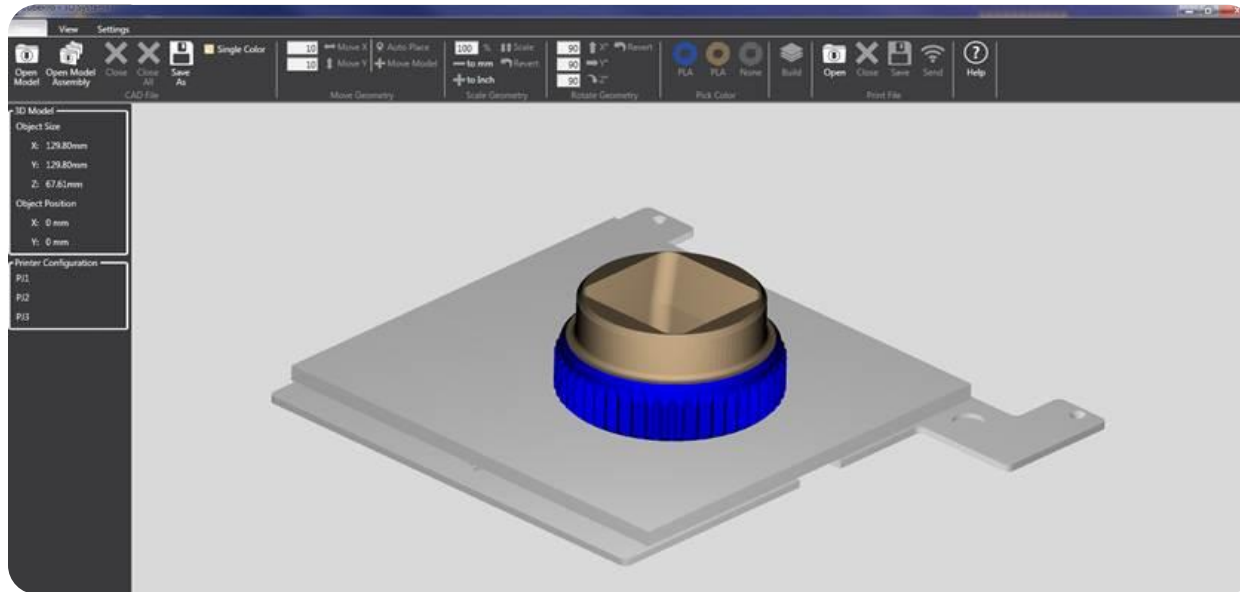
## Sample Uses

- Gears, fittings and bearings
- Housings and enclosures
- Impellers and connectors



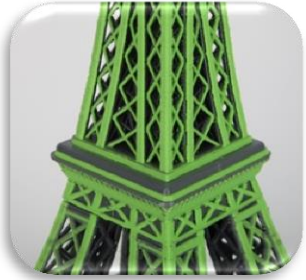
# True Multi-Color Technology

Exclusive feature detection technology for point & click coloring  
Instantly add color to any .STL Design



**BDSYSTEMS®**

# A Printer for Every Application



Feature	CubePro	CubePro <i>Duo</i>	CubePro <i>Trio</i>
Number of Print Jets	One	Two	Three
Multi-color Printing	No	Two Colors	Triple Color
Controlled Print Chamber	Yes	Yes	Yes
ABS, PLA, Nylon	Yes	Yes	Yes
Automated Supports	Yes	Yes	Yes
Multi-material Printing	No	Yes	Yes

**BDS SYSTEMS®**

# In the box & Compatibility

## In-the-box

Up to three free cartridges in the box

Free Cubify Invent Software

Supported with Cartridge Recycle Program

## Software Compatibility

File Types Supported: .STL

Mac OSX 10.8 or higher

Windows 7 and Windows 8 ( 32 & 64 bit)



# Target Market

## Hobbyist & Makers

- Garage Entrepreneurs
- Modeling Enthusiasts, DIYers
- Tinkerers interested in simple consistent modeling
- Gadget centric individual interested in the technology



## Designers

- Engineers, animators, architects from large and small organizations

## Businesses

- For Rapid Prototyping at an affordable cost
- Businesses with larger printers

# CUBO – Action Figure



*At CUBO, Victor uses the Sense 3D Scanner, Cubify Sculpt, Cubify Design software, and the CubePro & Cube printer to create a lively superhero action figure*

## Dream It. Draw It. 3D Print It.

Victor De Los Angeles Teaches You How to 3D Scan Yourself Into an Action Figure

by Matt Griffin

# BDSYSTEMS®

<#>



# Education Market Segment

- Middle School, High Schools, Technical Programs, STEM Programs
- Provide easier access to 3D design and printing to animators, architects, designers and engineers
- School Districts emphasizing emerging technologies & STEM edu.



# Smart Cartridge System

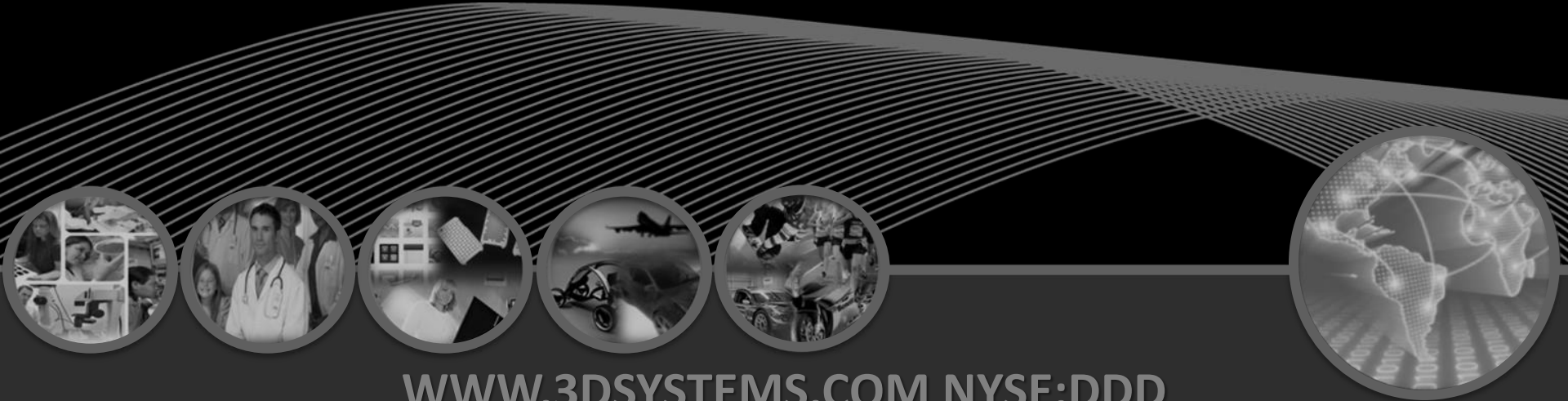


- Improved material formulas for enhanced print output
- Improved material lifespan with moisture lock cartridges
- Smart tracking to detect adequate material for prints
- Easier to store and handle, keeps material clean and fresh
- Recyclable



**3DSYSTEMS®**

Thank You



[WWW.3DSYSTEMS.COM](http://WWW.3DSYSTEMS.COM) NYSE:DDD