

Freecom

Classic Hard Drive SL

www.freecom.com



Keep it simple

Freecom
TECHNOLOGIES

Rev. 408

Dear user!

Thank you for choosing the **Freecom Classic Hard Drive SL** external hard drive. For optimal use and performance we advise you to read this manual carefully before using this product.

Freecom Technologies • Germany
www.freecom.com

Contents of the box

Please check the contents of the box; the following items should be included:

- external Freecom Classic Hard Drive SL
- power adaptor & power cord
- USB interface cable
- CD with manual, driver and application software
- Quick Install Guide

Warning !

All rights reserved. The products named in this manual are only used for identification purposes and may be trademarks or registered trademarks of the respective companies. This device was designed for home or office use.

Warning! This device is equipment complying with EN55022 class A. This equipment can cause radio disturbances in a residential area. If this is the case, the user has to take appropriate measures and assume all responsibility and costs for. It may not be used near or with any life-sustaining systems.

Freecom Technologies is not liable for any damages that may occur from the use of a Freecom system. All rights reserved. We reserve the right to upgrade our products in keeping with technological advances.

USER MANUAL

General Information	page	4
Precautionary measures	page	5
Freecom SL external hard drive	page	6

CHAPTER 1:

Installation of the Freecom Personal Media Suite Software (PC)	page	7
---	------	---

CHAPTER 2:

Hardware installation	page	11
-----------------------------	------	----

CHAPTER 3:

Driver installation (PC)	page	12
--------------------------------	------	----

CHAPTER 4:

Daily use of the Freecom SL with Freecom Personal Media Suite software (PC)	page	15
--	------	----

CHAPTER 5:

The User Interface of the Freecom Personal Media Suite (PC)	page	16
---	------	----

CHAPTER 6:

Partitioning your Freecom SL (PC)	page	31
---	------	----

CHAPTER 7:

Troubleshooting	page	45
-----------------------	------	----

General Information

The following hardware and software requirements must be fulfilled to ensure trouble-free operation.

Hardware Requirements

In order to use the Freecom Classic Hard Drive SL, following components are needed:

- Intel Pentium II 233MHz or higher
- 64MB RAM or higher
- CD-ROM drive for installing drivers and/or software
- Available USB 2.0 or USB 1.1 port*
- Internet connection for online warranty registration and driver/software updates and downloads

Software Requirements

- Windows 98 SE
- Windows ME
- Windows 2000
- Windows XP

Mac:

- iMac, iBook, Mac G3/G4/G5 or Power Book G3/G4 with USB interface
- Operating system: Mac OS 9.0 or higher (OS 9.0 does not support USB 2.0)
- Operating system: Mac OS X v10.1 or higher

Note: Bundled Freecom Personal Media Suite do not support MAC OS.

* (USB 2.0 is downwards compatible to USB 1.1. To achieve optimal performance from the Freecom Classic Hard Drive SL your PC should be equipped with an USB 2.0 port. USB 2.0 PCI Host Controllers are separately available at www.freecom.com).

Precautionary measures

To ensure that your Freecom Classic Hard Drive SL functions properly, please take note of the following precautions. If these are not followed, you may void your warranty and damage the Freecom SL.

- Safely remove the Freecom SL via your operating system (the "unplug or eject hardware" option in the Windows taskbar) before disconnecting the cable. Failing to do so may result in data loss.
- Do not drop the Freecom Classic Hard Drive SL or expose it to other kinds of sudden mechanical shocks as this may result in data loss and damage to the hard drive.
- Do not use the Freecom Classic Hard Drive SL when the ambient temperature is below 10°C or above 45°C.
- If the Freecom Classic Hard Drive SL is moved from a cool environment to a warmer environment, please allow the drive to acclimatize to the ambient temperature before operating the device. Failing to do so may lead to condensation within the drive enclosure, which in turn may cause the drive to malfunction.
- Do not place liquids or drinks on the Freecom SL. When liquids are spilled and get in contact with the electronics within the drive enclosure, it will damage the drive and will cause the drive to malfunction.
- Do not use the Freecom SL in a dusty environment. Dust inside the enclosure may damage the internal electronics and result in drive malfunction.
- Opening the Freecom SL will void the warranty.
- Since USB 2.0 is backwards compatible with USB 1.1, the Freecom SL can be connected to all USB ports. When connected to a USB 1.1 port, however, the performance (data transfer rate) of the Freecom SL will be much lower than when the drive is connected to a USB 2.0 port.

Freecom SL external hard drive

The hi-speed data transfer through the USB 2.0 interface makes it ideally suitable for data-storage, file sharing, backup, archiving, audio playback and all applications that need fast file access.

For your convenience, the Freecom Classic Hard Drive SL has been partitioned (1 partition) and pre-formatted (FAT32 file system). The FAT32 format ensures maximum interchangeability of the Freecom SL between different computers. Should you choose to format the Freecom SL in another file system (e.g. NTFS), please be aware of possible problems when connecting the Freecom SL to another computer than the one you used for formatting.

Options:

- Freecom USB 2.0 LE PCI Host Controller

See www.freecom.com for these and other Freecom products, or contact your local Freecom reseller/dealer.

Recommended sequence of installation

1. Install Freecom Personal Media Suite Software. (PC)
2. Connect the interface cable and the power cable to the drive and plug the power supply unit into the socket. Plug the interface cable into the appropriate slot of your computer.
3. (Only Windows 98 SE:) Install all necessary drivers.

Please refer to chapters 1-3 for a detailed description of the hardware and software installation.

CHAPTER 1: Installation of the Freecom Personal Media Suite software (PC only)

If you want to use the SYNC function on the Freecom SL, you need to install the Freecom Personal Media Suite software first.

Note: To use the functions of the Freecom Personal Media Suite described in this handbook, your Freecom Classic Hard Drive SL has to be connected to your PC.

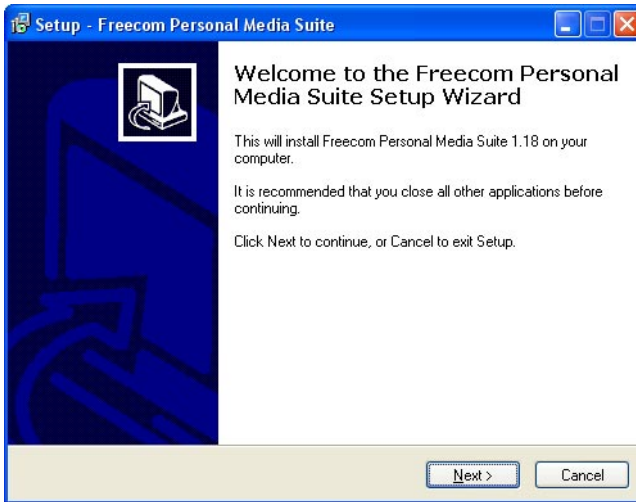
1.1 Installation of the Freecom Personal Media Suite

1. Insert the Freecom SL Software & Manual CD into your CD drive. The Freecom start menu opens:



In case the software does not open automatically, please click on "Start" in the main directory of the CD.

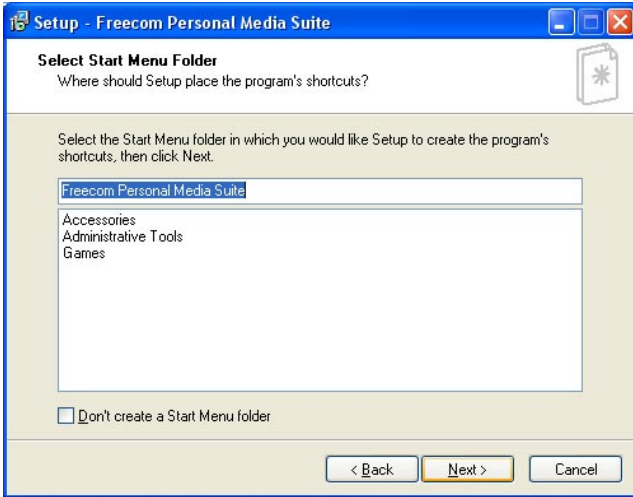
2. Click on "Freecom Personal Media Suite". The installation of the Freecom Personal Media Suite starts now. Follow the instructions on the screen, confirm with "Next" in order to continue with the installation.



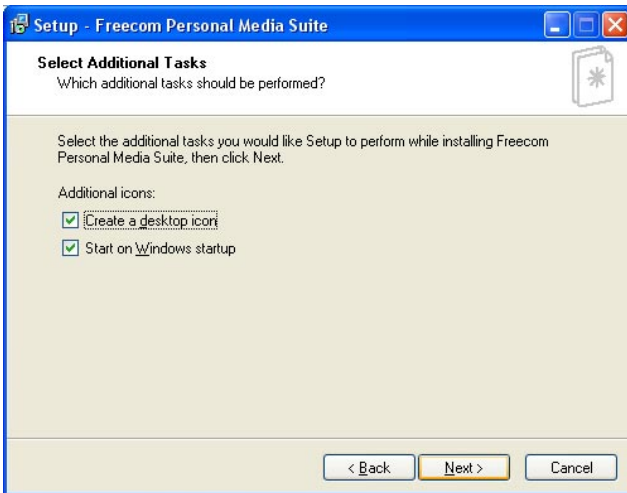
3. Please read the license agreement carefully. To accept the license agreement, confirm with "Yes". Note: Clicking on "No" ends the installation. Select the target folder and program folder in the start menu in which the Freecom Personal Media Suite symbol is to appear.



4. Default target folder is C:\Programs\Freecom Personal Media Suite. You can select a different target folder for the program files by selecting another folder on your hard drive.



5. In the dialogue "Options" you can select whether to create a link to the Freecom Personal Media Suite Software on the desktop and whether the program should be started automatically when starting Windows. It is recommended to select both options for better operation of the Freecom Personal Media Suite.



6. Click on "Next" to start the installation. All necessary program files are now written on the hard drive of your computer.
7. In the last window, you will be asked whether you want to start Freecom Personal Media Suite now. It is recommended to select this option so that you can configure the software for your Freecom SL. Please click on "Finish".

1.2 Deinstallation of the Freecom Personal Media Suite

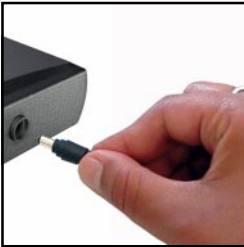
In order to remove the Freecom Personal Media Suite from your computer, please proceed as follows:

1. In the "Start" menu, please click on "Programs" - "Freecom Personal Media Suite".
2. Select "Uninstall Freecom Personal Media Suite". The software is now removed from your computer.

CHAPTER 2: Hardware Installation



1. Connect the interface cable to the Freecom Classic Hard Drive SL.



2. Connect the cable of the power supply to the Freecom SL and the power supply itself to the socket.



3. Connect the interface cable to the interface port of your computer.

Since USB 2.0 is backwards compatible with USB 1.1, the Freecom SL can be connected to all USB ports. When connected to a USB 1.1 port, however, the performance (data transfer rate) of the Freecom SL will be much lower than when the drive is connected to a USB 2.0 port.

For optimal performance, the Freecom SL should always be connected to a USB 2.0 port. The Freecom USB 2.0 PCI Host Controller Card is available at www.freecom.com.

Recommended after Hardware installation

- **only Windows 98:** After you have connected the Freecom SL, please start with the driver installation, as in chapter 3.1 on page 12 described.

- **Windows ME / 2000 / XP:** Under Windows ME / 2000 / XP a separate Freecom driver is not required. The drivers for Windows ME, Windows 2000 and Windows XP will be installed automatically by the operating system after plugging in the Freecom Classic Hard Drive SL into the USB port of the computer.

Your Freecom Classic Hard Drive SL is fully backwards compatible with USB 1.1.

CHAPTER 3: Driver installation (PC only)

Under Windows ME / 2000 / XP a separate Freecom driver is not required. The drivers will be installed automatically by the operating system after plugging in the Freecom Classic Hard Drive SL into the USB port of the computer.

Driver installation USB under Windows 98 SE

Note: Your Freecom Classic Hard Drive SL is fully backwards compatible with USB 1.1. The installation for USB 1.1 is the same as described below for USB 2.0.

1. Insert the Freecom Manual and driver CD into the CD-ROM drive.
2. Connect your Freecom Classic Hard Drive SL to the USB connector of your notebook or computer.
3. The "Add New Hardware Wizard" opens and a "USB 2.0 Device" (USB 2.0 PCI Host Controller) or a "USB TO IDE" (USB 1.1 connector) is found.



Click on "Next".

- In the next window select "Search for the best driver for your device. (Recommended)". Click on "Next".



- Make sure that the checkbox "CD-ROM drive" is activated in the next window.



Continue by clicking on "Next".

6. The Hardware Wizard finds a "Freecom SL".



By clicking on "Next" the necessary files will be installed. Afterwards click on "Finish" to complete the installation. Congratulations! You've just finished to install the Freecom Classic Hard Drive SL and the external hard drive is almost ready to use.

CHAPTER 4: Daily use of the Freecom SL

The hi-speed data transfer through the USB 2.0 interface makes it ideally suitable for data-storage, file sharing, backup, archiving, audio playback and all applications that need fast file access.



1. The status of LED

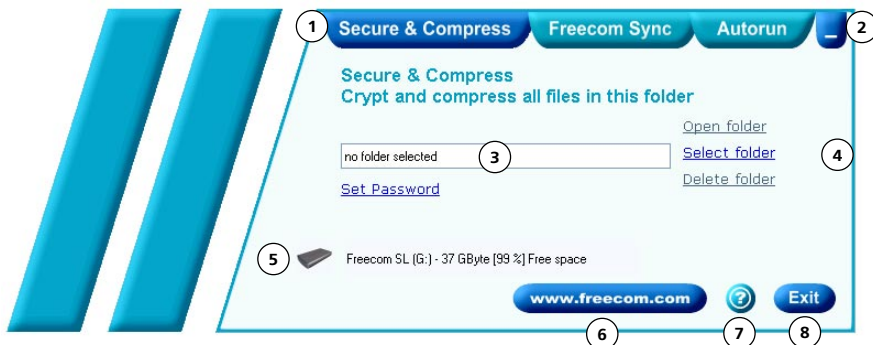
LED	Status
on	Power On
flickers	Harddisk Access
off	Disconnected

4.1 Daily use of the Freecom SL with Freecom Personal Media Suite software (PC only)

Creating a SYNC folder (PC)

After the installation of the Freecom SL is finished, the Freecom SYNC folder will be created automatically when Freecom Personal Media Suite was installed before. If not, please refer to chapter 5.4.2 (page 22 - Creating a new SYNC folder).

CHAPTER 5: The User Interface of the Freecom Personal Media Suite (PC only)



- 1 Tabs for configuration of the Freecom Personal Media Suite components
 - Secure & Compress
 - Freecom SYNC
 - Autorun
- 2 Minimizes Freecom Personal Media Suite in the taskbar
- 3 Input field (also shows the selected folder)
- 4 User menu
- 5 Connected Freecom SL (drive letter + available memory capacity)
- 6 Link to www.freecom.com. Click on this to access the Freecom homepage. Here you can find further information about your Freecom SL.
- 7 Quick Help for Freecom Personal Media Suite
- 8 Minimizes Freecom Personal Media Suite in the system tray.

5.1 Configuration

To open the configuration menu, please right-click on the Freecom Personal Media Suite icon in the system tray and select "Configuration":

1. "Show splash screen": Deactivate this function to prevent the display of the start screen when starting the program.
2. "Start program on Windows start": Starts the Freecom Personal Media Suite in the background with every Windows start. You will know this by the icon of the Freecom Personal Media Suite in the system tray.

Important: We recommend to leave the function "Start program on Windows start" activated under all circumstances in order to be able to use all the functions of the Freecom Personal Media Suite (e.g. "Autorun", "SYNC on Freecom drive plug-in")!

5.2 Autorun

The "Autorun" function enables you to open or start documents, files or programs automatically when your Freecom Classic Hard Drive SL is connected to your PC.

Automatically start, for example, the last document you were working on, MP3 play lists, your favourite film and much more. These files do not have to be on your Freecom SL for this.



5.2.1 Adding files / folders

1. Open the Freecom Personal Media Suite and select the "Autorun" tab.
2. Add files, folders and programs to the Autorun list by either clicking on "Add file" and selecting the corresponding file or by pulling the files into the Autorun list field using drag&drop.
3. For folders, please select "Add folders" or pull a folder into the Autorun list field using drag&drop.
4. Alternatively, you can create a new folder on your Freecom SL using the "Add folder" function by clicking on "Create new folder", naming the folder and selecting it.

5.2.2 Removing files / folders from the Autorun list

1. Open the Freecom Personal Media Suite and select the "Autorun" tab.
2. Select the file or the folder to be removed in the Autorun list field.
3. Click on "Remove". The corresponding entry is removed from the list.

5.3 Secure&Compress

The Secure&Compress function serves to compress and encrypt your documents. Unauthorized access to your personal data is therefore impossible.



5.3.1 Add / Select Folders

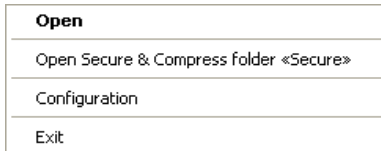
1. Open the Freecom Personal Media Suite and select the tab "Secure&Compress".
2. Click on "Change folder" and select the folder on your Freecom Classic Hard Drive SL whose content is to be compressed and encrypted.
3. Alternatively, you can create a new folder to be encrypted on your Freecom SL using the "Change folder" function by clicking on "Create new folder", naming the folder (e.g. "Secure") and selecting it.

In the selected folder, all files - even in sub-directories - are compressed and then encrypted.

The active Secure&Compress folder is easily recognised on your Freecom SL by the "Padlock".

5.3.2 Opening the Secure&Compress folder

1. Open the Freecom Personal Media Suite and select the tab "Secure&Compress".
2. Click on "Open folder" in order to open the Secure&Compress folder.
3. If the Freecom Personal Media Suite is already open and has started minimised in the taskbar, you can also open the Secure&Compress folder with a right-click on the taskbar symbol of the Freecom Personal Media Suite:



4. Of course you can also open the Secure&Compress folder over the Windows Explorer.

5.3.3 Encrypting files and folders

1. Open the Secure&Compress folder.
2. Pull the files or folders to be encrypted in the Secure&Compress folder using the drag&drop function. Each file is now compressed and then encrypted.
3. The first time you will be requested to enter and confirm a password. Select "Save password on this computer" if you do not want to be requested to enter a password again.
4. Alternatively, you can also right-click on the files or folders and select the Secure&Compress folder in the context menu under "Send to ...".

5.3.4 Decrypting files and folders

In order to decrypt files and folders which are in the Secure&Compress folder, please proceed as follows:

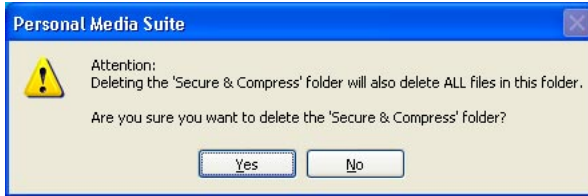
1. Open the Secure&Compress folder.
2. Select the file(s) or folder(s) to be decrypted and pull them into the target folder (e.g. with the Windows Explorer) using drag&drop.
3. Your files are now decrypted and decompressed. The encrypted original remains on the Freecom SL.

5.3.5 Deleting the Secure&Compress folder

Click on "Delete folder" in order to delete the selected Secure&Compress folder.

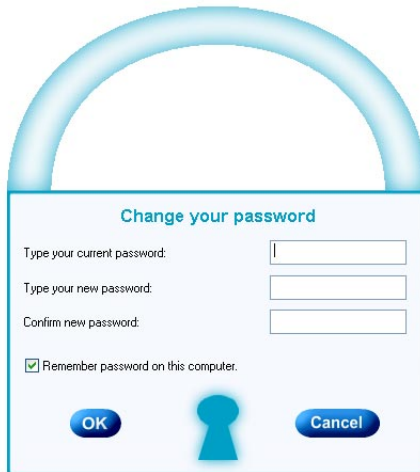
ATTENTION: All files in the folder are irrevocably deleted!

Before the deletion, a security request is carried out whether you really want to delete the folder:



5.3.6 Changing the password

1. Open the Freecom Personal Media Suite and select the tab "Secure&Compress".
2. Click on "Change password". The following window opens:



3. Please enter your current password in the top input field. Enter your new password in the middle input field and confirm it in the bottom input field.

Please note: Your changed password applies to all files and folders encrypted from the time of the change. For files and folders which were encrypted before, the password which was used for encryption remains.

Changes of the password do not apply to files and folders already encrypted!

5.4 Freecom SYNC

5.4.1 What is Freecom SYNC?

The Freecom SYNC integrated in the Freecom Personal Media Suite is a program for synchronizing files. The computer serves as origin of the data. This data can be processed on any number of other computers.

Example:

You create a document at work and want to work on it at home (Freecom Personal Media Suite is installed on your PC at work):

- Copy the document from the PC at work to your Freecom SYNC folder on your Freecom SL.
- Open the document at home directly out of the Freecom SYNC folder. Work on it and save it in the Freecom SYNC folder.
- Connect the Freecom Classic Hard Drive SL to your PC at work and click "Sync now" in the Freecom Personal Suite. The document will now be synchronized between your PC at work and the Freecom Classic Hard Drive SL. While synchronizing, only modified files will be replaced by newer files.



5.4.2 Creating a new SYNC folder

1. Open the Freecom Personal Media Suite and select the tab "Freecom SYNC". Click on "Change folder" and select a folder on your Freecom SL.
2. Alternatively, you can create a new SYNC folder on your Freecom SL using the "Change folder" function by clicking on "Create new folder", naming the folder (e.g. "SYNC") and selecting it.
3. Click on "Complete" so that the new folder is created. Then opens the Freecom SYNC folder.

5.4.3 Opening the SYNC folder

1. Open the Freecom Personal Media Suite and select the tab "Freecom SYNC".
2. Click on "Open folder" in order to open the SYNC folder.
2. If the Freecom Personal Media Suite is already open and has been started minimised in the taskbar, you can also open the SYNC folder through a right-click on the taskbar symbol of the Freecom Personal Media Suite.

5.4.4 Adding files into the SYNC folder

1. Open the SYNC folder.
2. Pull the respective files or folders in the SYNC folder using the drag&drop function.
3. Alternatively, you can also right-click on the file(s) or folder(s) and select the SYNC folder in the context menu under "Send to ...". Your files/folders are now copied into the SYNC folder.

5.4.5 Synchronisation of files and folders

There are two possibilities for the synchronization of your files:

1. Click "Sync now" in the Freecom Personal Suite. Your data is now synchronized.
2. Synchronisation of the data when your Freecom SL is connected to your computer.

For this, please proceed as follows:

- a) Open the Freecom Personal Media Suite and click on the tab "Freecom SYNC".
- b) Select a SYNC folder if you have not yet done so.
- c) Activate the function "SYNC on Freecom USB device plug-in" in the tab "Freecom SYNC":

Freecom Sync
Synchronize all files in this folder

G:\Sync

Sync on Freecom USB Device plug-in

Your files are now synchronized each time when you connect your Freecom Classic Hard Drive SL to your computer (Freecom Personal Media Suite has to be started).

This function is activated as standard when a SYNC folder is created!

3. Starting the synchronization manually
 - a) Open the Freecom Personal Media Suite and click on the tab "Freecom SYNC".
 - b) Select a SYNC folder if you have not yet done so.
 - c) Click on "Synchronize now" to start the data synchronization.
 - d) Alternatively, right-click on the system tray icon of the Freecom Personal Media Suite and select "Start synchronization" there.

5.4.6 Changing the SYNC folder

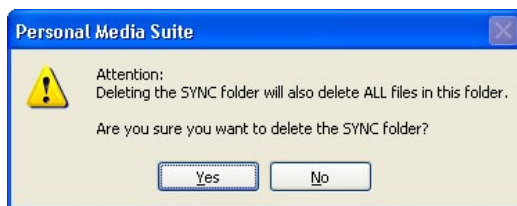
- a) Open the Freecom Personal Media Suite and click on the tab "Freecom SYNC".
- b) Click on "Change folder" to select a new folder for data synchronization.
- c) Important: The selected folder may not contain any files or folders!

5.4.7 Deleting the SYNC folder

- a) Open the Freecom Personal Media Suite and click on the tab "Freecom SYNC".
- b) Click on "Delete folder" in order to delete the active SYNC folder.

ATTENTION: All files in the folder are irrevocably deleted!

Before the deletion, a security request is carried out whether you really want to delete the folder:



5.4.8 Every day use

After you have installed all software, created the SYNC folder and configured the software and Freecom SL you can start using Freecom SYNC to synchronize all your data with the Freecom SL. You can use the SYNC function for instance to make backups of important files, to take files from work to your home or on the road.

Usage of the SYNC folder with other computers

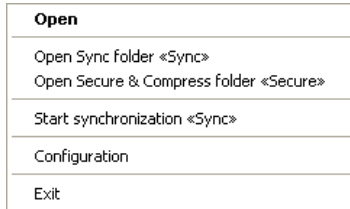
Please follow these instructions if you want to use the SYNC folder with another (second) computer.

All files you want to work with on another computer have to be opened directly out of the Freecom SYNC folder! You should not copy them to another hard disk, as this might cause a later synchronization to perform incorrectly.

Synchronization of new or changed files

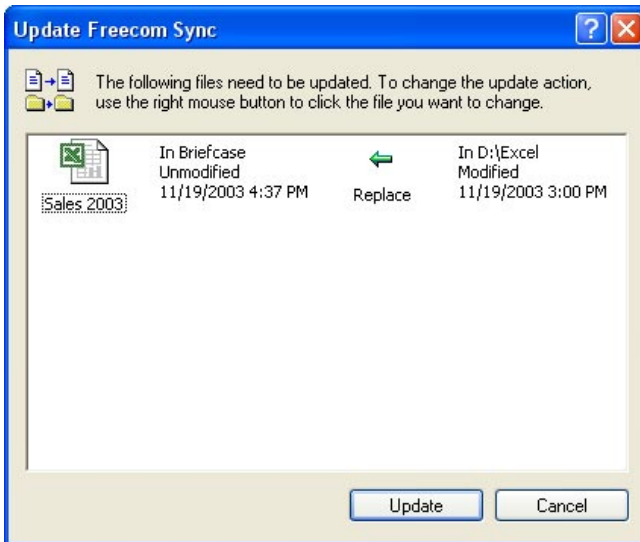
This example shows how you can synchronize files which were changed or created on the Freecom SL, with the original files on the primary computer.

1. Connect the Freecom SL with the primary computer.
2. Open the context menu on the SYNC icon in the taskbar and click on "Start synchronization".



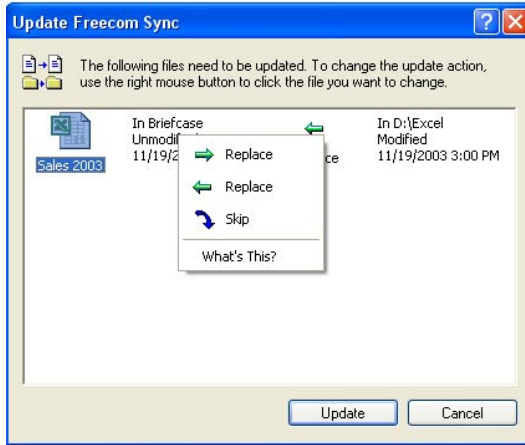
3. A status window appears and the SYNC LED on the Freecom SL starts blinking.

Please select "Update" if you wish to synchronize the file or otherwise select "Cancel". If you choose not to synchronize the file (Cancel) you will be able to synchronize this file during the next synchronization.



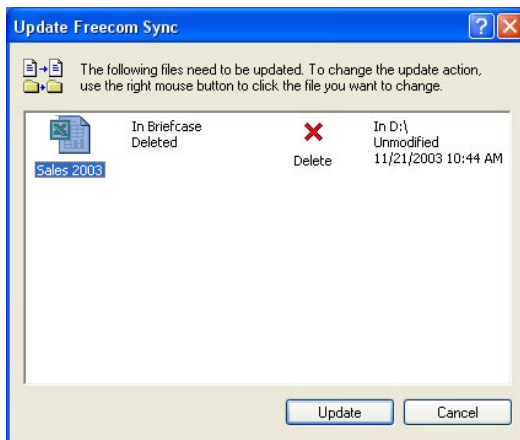
5.5 Skip files during synchronization

If you want to skip just one file out of many, please click on this file with the right mouse button and select "Skip". The green arrow next to the selected file changes to a blue one, indicating that this file will not be synchronized. You will be able to synchronize this file during the next synchronization.



5.5.1 Handling deleted files

Deleting files on either the primary computer or the SYNC folder on the Freecom SL results in a red X next to the file during the next synchronization.

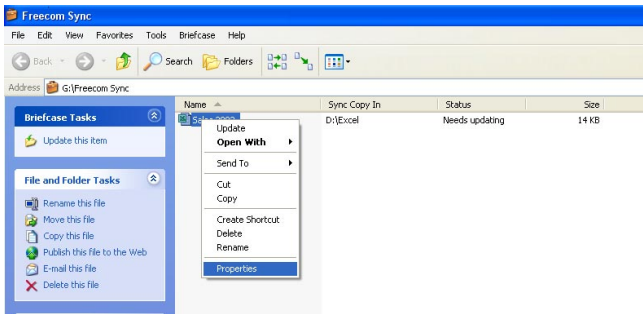


This indicates that the file has been deleted and that its counterpart will be deleted, too. Please select "Update" to proceed.

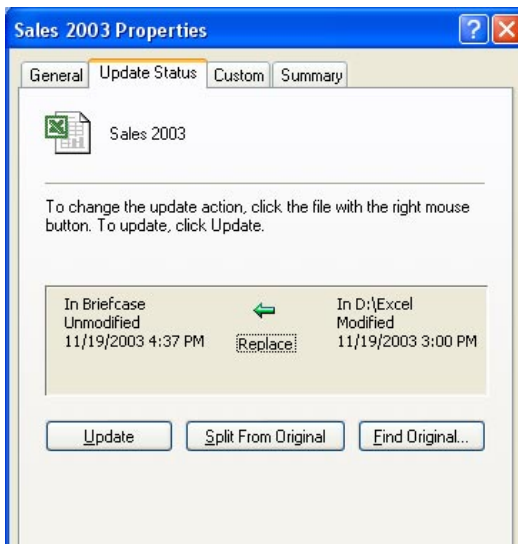
If you wish to keep the file, please click with the right mouse button on the file and select "Don't Delete". The file will not be deleted and will be disregarded during the next synchronization.

If you want to delete a file on either the primary computer or in the SYNC folder and do not want to affect its counterpart, it is necessary to "Split From Original" the files. Please follow the instructions:

1. Select the file or folder you want to delete.
2. Choose "Properties" in the context menu.



3. Select "Update" and "Split From Original".



4. Select "Yes".



5.5.2 Office use

Have you ever had doubts storing your data on the network of your company only? Sure, there is always a backup of the server but do you really feel good with this 'remote' backup? The Freecom SL is ideal for making a local backup, which stores your data independently from your network or local computer. Simply 'send to' your important files and directories to the SYNC folder on the Freecom SL and update your backup from time to time click "Sync now". This is extremely easy and very fast, because the SYNC tool only backups changed files via the fast USB-2 connection.

The best thing is, even when your network or local computer is not working, you can take your Freecom SL to any other computer (equipped with an USB port) and continue. Even at your home-office, where you can be close to the people you love and still having all your business data available. Simply click "Sync now" before you leave the office and you are always up to date and can work with the data on the Freecom SL.

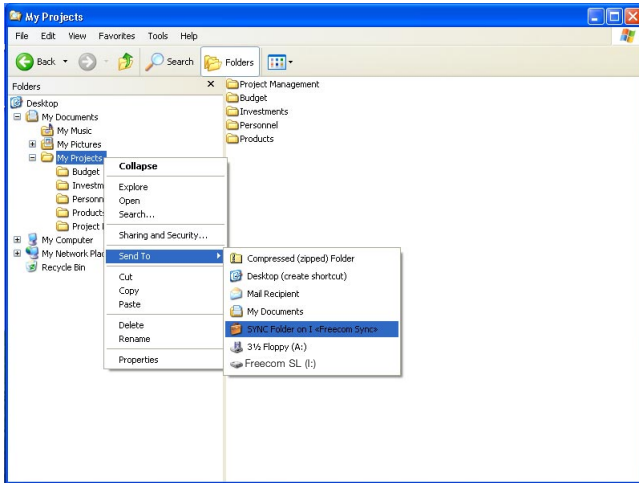
The Freecom SL provides a vast amount of memory – more than most computers are equipped with. It is ideal for storing large graphics or videos. The files can be edited directly from the Freecom SL, as its USB-2 connection is fast enough by far.

This is what you have to do:

Follow the instruction in the manual to install the Freecom SL and the SYNC-folder. Mark the files and folders you want to copy to the SYNC folder. Click with the right mouse button on the files and folders and select 'Send to SYNC folder...'

Done.

Now all your valuable data has been copied to the Freecom SL. Every time you click "Sync now", all changed or added / deleted files and folders from the selected folders will be synchronized with the data on the Freecom SL.



5.5.3 Home use

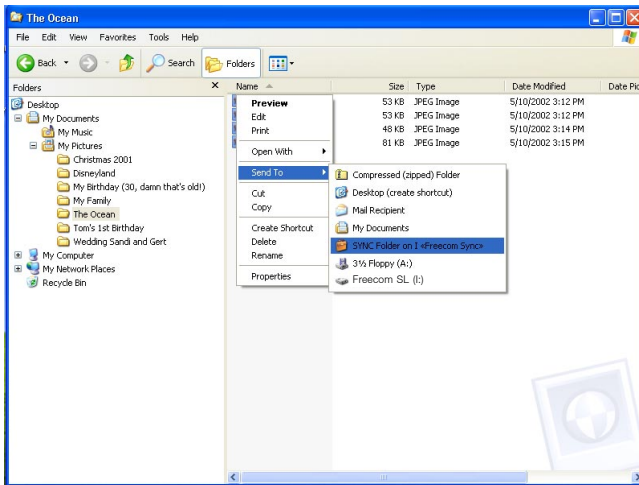
At the office, there is always a backup of your important business data. But how about your data at home? All the memories stored in digital photo's made during your last holiday? Or the first pictures and movies of your children! You do not want to loose those! The Freecom SL is ideal for making a safety backup, which stores your data independently from your computer. Simply 'send to' your important files and directories to the SYNC-folder on the Freecom SL and update your backup from time to time click "Sync now". This is extremely easy and very fast, because the SYNC tool only backups changed files via the fast USB-2 connection. And all your memories are safe.

This is what you have to do:

Follow the instruction in the manual to install the Freecom SL and the SYNC folder. Mark the files and folders you want to copy to the SYNC folder. Click with the right mouse button on the files and folders, which contain the pictures or videos you want to be in a safe place and select 'Send to SYNC folder...'

Done.

Now all your valuable data has been copied to the Freecom SL. Every time click "Sync now", all changed or added / deleted files and folders from the selected folders will be synchronized with the data on the Freecom SL.



CHAPTER 6: Partitioning your Freecom SL (PC only)

6.1 General information

Your Freecom SL was partitioned and formatted to provide you with the maximum available capacity and compatibility. FAT32 was chosen as file system to assure that you will be able to read your files on any PC. It is recommended not to change the current configuration of your Freecom SL.

For some users another file system might fit better for their needs. This manual describes current limitations of most common file systems and Instructions to enable you to adapt the Freecom SL to your needs.

6.2 File System features

Please refer to the tables below for an overview:

File systems supported by different operating systems

Operating system \ File system	FAT	FAT32	NTFS
Windows 98SE	yes	yes	not supported
Windows ME	yes	yes	not supported
Windows 2000	yes	yes	yes
Windows XP	yes	yes	yes

Maximum size of a partition

Operating system \ File system	FAT	FAT32	NTFS
Windows 98SE	2 GB	60 GB ^{*1,2}	n.a.
Windows ME	2 GB	2 TB ^{*2}	n.a.
Windows 2000	4 GB ^{*3}	32 GB	16 TB
Windows XP	4 GB ^{*3}	32 GB	16 TB

*1: A patch for Windows 98SE is required for hard disk larger than 60 GB. The maximum partition size can never exceed the capacity of your HDD.

*2: Hard disk capacity will not be displayed correctly by fdisk!

*3: FAT partitions larger than 2 GB can only be administrated by Windows 2000/XP.

Example for different partitions with different file systems on one Freecom SL

Total size of Freecom SL \ File system	NTFS	FAT32
40 GB	20 GB	20 GB

The example above is a good solution for Windows 2000/XP users who sometimes exchange data with Windows 98SE/ME PCs.

For storing the data under Windows 2000/XP both partitions can be used. As the NTFS file system is not recognized by Windows 98SE/ME data to be used on these operating systems must be stored on the FAT32 partition.

Please follow the steps below to adapt the Freecom SL for your needs.

6.3 Partitioning your Freecom SL under Windows 98SE / Windows ME

- **Windows 98SE only:** The fdisk version which is installed together with your operating system does not recognize the correct size of hard disks larger than 64 GB.

- **Windows 98SE/ME:** For large partitions fdisk will not display the partition size correctly! Please ignore this as the partitioning results will still be OK.

Further information and an update to fix this problem can be found in article 263044 of the "Microsoft Knowledge Base" on the Microsoft Website under <http://support.microsoft.com>.

6.3.1 Deleting a partition on the Freecom SL under Windows 98SE / ME

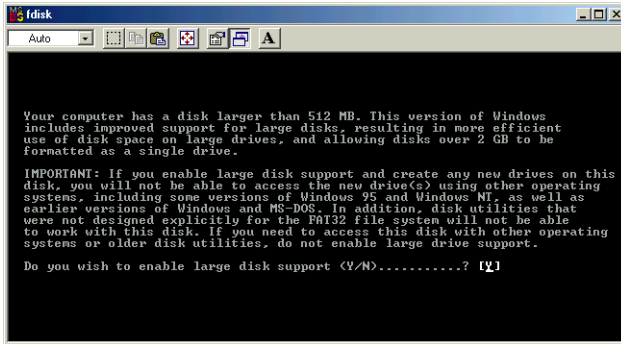
The following steps will explain how to delete a partition on your Freecom SL.

1. Click on the "Start" button.
2. Select "Run".
3. Enter "fdisk" and confirm with "OK".
4. fdisk will be started. Answer the question "Do you wish to enable large disk support?" by pressing the 'Return' key. FAT32 is now activated.
5. Choose Option 5 "(Change current fixed disk drive)" by pressing '5' and 'Return'.
6. Select the hard disk to be deleted by its number. ATTENTION: Please make sure that the correct drive is selected. Selecting the wrong drive will lead to a loss of your data!
7. Choose Option "3 (Delete partition or Logical DOS Drive)" by pressing '3' and 'Return'.
8. Your Freecom SL comes formatted as primary partition. Select option 1 "Delete Primary DOS Partition" by pressing '1' and 'Return'.
9. Select the partition to be deleted by pressing its number and 'Return'.
10. Enter the drive label and press 'Return'.
11. Confirm with 'Y' and 'Return' to delete the partition.
12. Press the 'ESC' key to return to the fdisk options.
13. Press 'ESC' to exit fdisk. Stop your hard disk by using the hot unplug icon in the lower right corner of your screen and remove the USB cable from your hard disk. Afterwards connect your hard disk again with your computer. The hard disk will now be recognized by Windows.

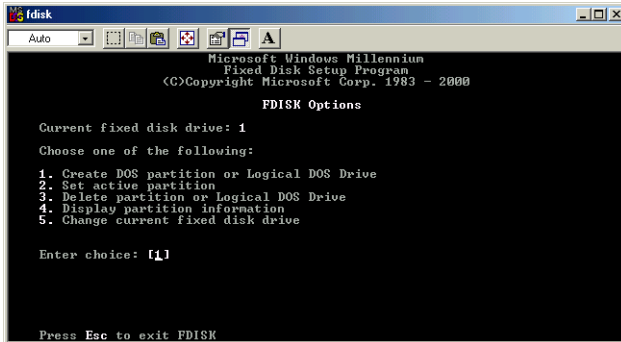
6.3.2 Creating a partition on the Freecom SL under Windows 98 SE / ME

The following steps will guide you the process of creating partitions on your Freecom SL under Windows 98SE/ME. After this procedure your Freecom Classic Hard Drive SL will be ready for use and it will be allocated a drive letter.

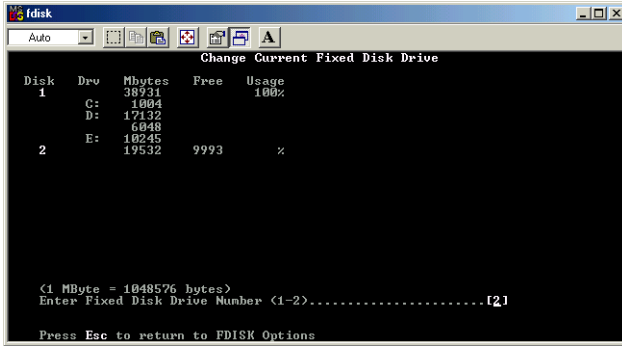
1. Click on the "Start" button.
2. Select "Run".
3. Enter "fdisk" and confirm with "OK".



4. Answer the question "Do you wish to enable large disk support?" by pressing the 'Return' key. FAT32 is now activated.
5. Choose Option "5 (Change current fixed disk drive)" by pressing '5' and 'Return'.



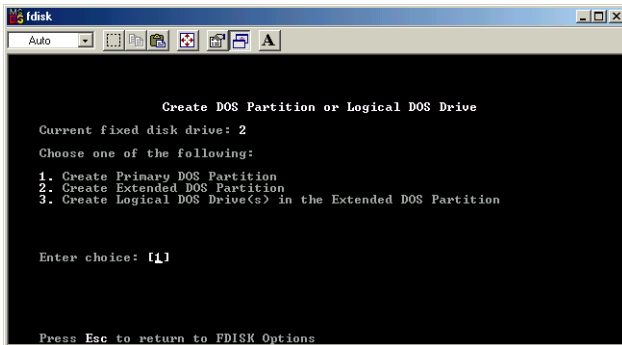
6. Select the hard disk by its number where the "Usage" contains no value but only a percent symbol. Select the number of the corresponding hard disk and confirm by pressing the "Return" key. Now your hard disk is activated and ready to be partitioned.



Note: Partition size of large hard disks will not be displayed correctly! However partitioning results will be OK.

7. Select Option 1 "(Create DOS partition or Logical DOS drive)" by pressing '1' and confirm with 'Return'.
8. Select Option 1 "(Create primary DOS partition)" by pressing '1' and confirm with 'Return'.

Wait until drive integrity is completely checked.



9. If only one partition is required then answer "Y" to the question: "Do you wish to use the maximum available size for a Primary DOS partition?" If more than one partition is required go to the next section "Create two or more partitions on the Freecom SL under Windows 98 / Windows ME".

Now the whole disk will be partitioned as one primary partition. Wait until the drive integrity check is completed.

10. Press the 'ESC' key to return to the fdisk options.
11. Now press the 'ESC' key to close the "fdisk window". Your hard disk is now partitioned.

12. Stop your hard disk by using the hot unplug icon in the lower right corner of your screen and remove the USB cable from your hard disk. Afterwards connect your hard disk again with your computer. The hard disk will now be recognized by Windows.

As Windows tries to access your hard disk an error message will appear. This happens, because your hard disk is not yet formatted.

6.3.3 Creating two or more partitions on the Freecom SL under Windows 98SE / ME

1. Repeat steps 1 to 7 from the previous chapter (Create one partition on the Freecom SL under Windows 98SE/Windows ME).
2. Answer the question "Do you wish to use the maximum available size for a primary DOS partition?" with "N".
3. Enter either the size or a percentage value for the partition size. Press 'Return' and wait until the drive integrity check is completed.
4. Press the 'ESC' key to return to the fdisk options.
5. Select Option 1 "(Create DOS partition or Logical DOS drive)" by pressing '1' and confirm with 'Return'.
6. Select Option 2 "(Create Extended DOS Partition)" by pressing '2' and confirm with 'Return'. Wait until the drive integrity check is completed.
7. Enter either the size or a percentage value for the partition size or press 'Return' to accept the default value.
8. Press 'ESC' to return and wait until the drive integrity check is completed.
9. A logical drive needs to be defined now. Enter the size of the logical drive and press 'Return' or accept the default value by pressing 'Return'.
10. Press 'ESC' to return to the fdisk options.
11. Now press the 'ESC' key to close the "fdisk window". Your hard disk is now partitioned.
12. Stop your hard disk by using the hot unplug icon in the lower right corner of your screen and remove the USB cable from your hard disk. Afterwards connect your hard disk again with your computer. The hard disk will now be recognized by Windows.

As Windows tries to access your hard disk an error message will appear. This happens, because your hard disk is not yet formatted.

6.3.4 Formatting partitions on the Freecom SL under Windows 98SE / ME

1. Double-click on the "My Computer" icon on your desktop.
2. Click with the right mouse button on the drive symbol of your Freecom SL. Now a menu will appear where you can choose the option "Format".
3. Please perform a complete formatting of your drive. You can also assign a name to your drive here.
4. After you have completed your selection, click on "Start".

Attention: Selecting the wrong drive will lead to a loss of your data. Please ensure that the correct drive is selected!

5. Confirm the next message with "OK".
6. After formatting is finished you can perform a disk scan. To do so, follow the instructions of the Windows Help system. If you don't want to scan your disk, just close the message window.
Repeat these steps for each partition if more than one partition was created.
Now your Freecom SL is ready for use. You can use it like an internal hard disk for storing your data.

6.4 Partitioning your Freecom SL under Windows XP / 2000

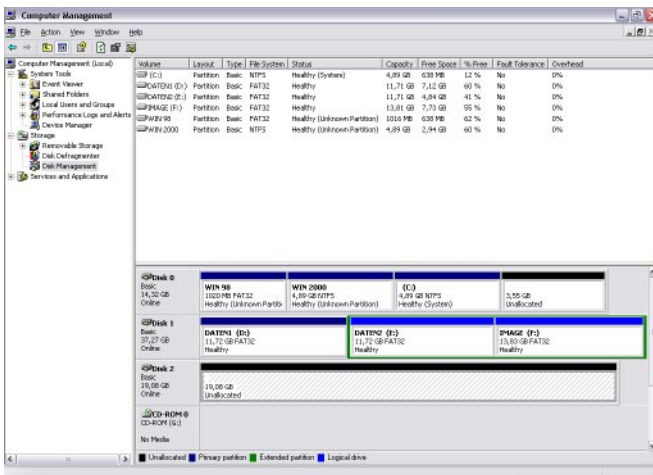
6.4.1 Deleting a partition on the Freecom SL under Windows XP / 2000

1. Click with the right mouse button on the "My Computer" icon on your desktop.
2. Select the option "Manage".
3. Select the option "Storage" -> "Disk Management".
4. Choose your external hard drive and right-click on the partition.
5. Select "Delete Partition" and confirm by clicking on "Yes". The partition will be deleted now.

6.4.2 Creating a partition on the Freecom SL under Windows XP / 2000

The following steps will guide you through the process of creating partitions on your Freecom SL. After this procedure your Freecom Classic Hard Drive SL will be ready for use and it will be allocated a drive letter.

1. Click with the right mouse button on the "My Computer" icon on your desktop.
2. Select the option "Manage".
3. Select the option "Storage" -> "Disk Management".
4. Choose the hard disk, which is "unallocated". Ensure that the entire drive is "unallocated".



- Click with the right mouse button on the "unallocated" area and select the option "New Partition" (Windows 2000: "Create Partition Wizard"). The "New Partition Wizard" opens. Click on "Next".



- Select "Primary partition" and click on "Next".



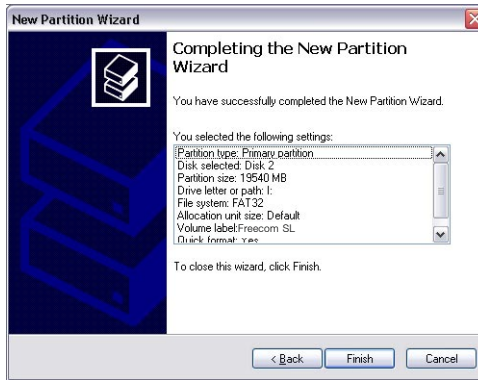
- Now you can adjust the size of your partition. Click on "Next" if only one partition is to be created. See next chapter (Creating two or more partitions on the Freecom SL under Windows XP/2000) how to create more than one partition.



- Assign a drive letter to your hard disk. Normally you can use the default options. Click on "Next".
- Select the formatting option. Choose either "FAT32" or "NTFS", the "Allocation Unit Size" should remain on "Default". Finally select "Perform Quick Format" and click on "Next".



10. Click on "Finish" to complete the partitioning of your Freecom SL. Your Freecom SL will be formatted now and is ready-to-use afterwards.

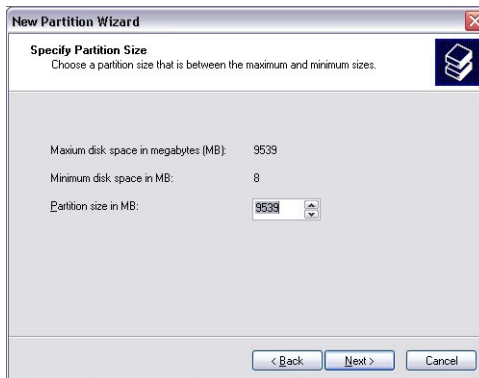


5.4.3 Creating two or more partitions on the Freecom SL under Windows XP / 2000

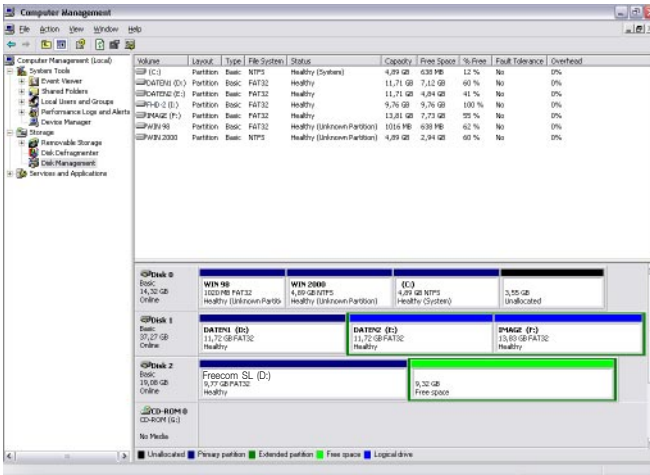
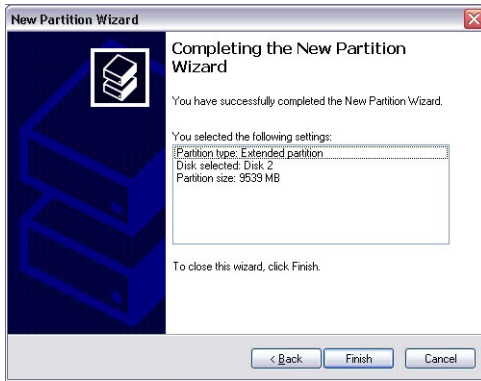
1. Repeat the steps from the previous chapter (Creating a partition on the Freecom SL under Windows XP/2000) for creating the first partition.
2. Click with the right mouse button on the "My Computer" icon on your desktop.
3. Select the option "Manage".
4. Select the option "Storage" -> "Disk Management".
5. Right-click on the unallocated space of your Freecom SL and select the option "New partition" (Windows 2000: "Create partition"). The "New Partition Wizard" (Windows 2000: "Create Partition Wizard") opens. Click on "Next".
6. Select "Extended partition" and click on "Next".



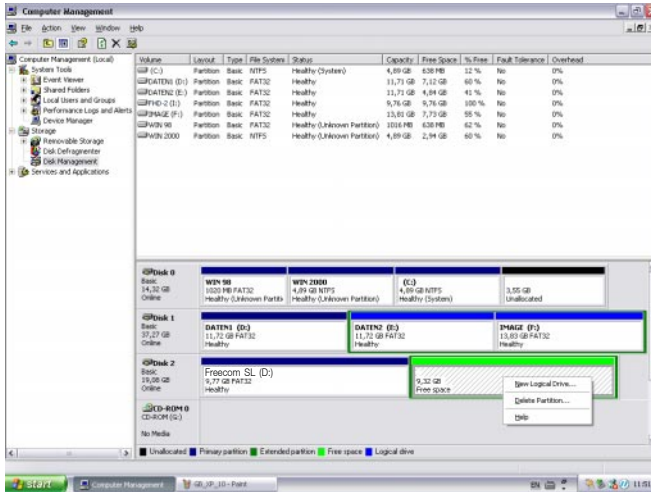
7. Now you can adjust the size of your partition. Enter the size and click on "Next".



- Click on "Finish" to create the "Extended partition". The unallocated space now changed to "Free space".



- Right-click on "Free Space" and select "New Logical Drive" (Windows 2000: "Create Logical Drive"). The "New Partition Wizard" (Windows 2000: "Create Partition Wizard") opens. Click on "Next".



- "Logical drive" is already selected. Click on "Next".
- Specify the partition size and click on "Next".
- Assign a drive letter and click on "Next".
- Select the formatting option. Choose either "FAT32" or "NTFS", the "Allocation Unit Size" should remain on "Default". Finally select "Perform Quick Format" and click on "Next".
- Click on "Finish" to complete partitioning. Your partition will be formatted now and is ready-to-use.

CHAPTER 7: Troubleshooting

Issue	Solution
After I connected the Freecom SL to my computer for the first time no Freecom SYNC folder has been created automatically.	<ul style="list-style-type: none"> • Install the Freecom Personal Media Suite software and safely remove and reconnect the Freecom SL • Follow the instructions on chapter 5.4.2 Creating a new SYNC folder.
After installation of Freecom Personal Media Suite, the message "No Freecom Classic Hard Drive SL external hard drive found." appears.	<ul style="list-style-type: none"> • Connect the Freecom Classic Hard Drive SL to your computer. • Check all connections between the Freecom Classic Hard Drive SL, the power supply and the computer. • Safely remove and reconnect the Freecom Classic Hard Drive SL.
Files deleted in the SYNC folder, are still appearing during the synchronization.	You have to "Split From Original" the files from their counterparts before you may delete them. Please refer to chapter 5.5.1 Handling deleted files.
An empty folder is not synchronized.	Empty folders are not taken into account during synchronization.
If you are working with the program "Total Commander" and are using the "send to" dialog to add items to the SYNC folder, the message "The briefcase is in use on another computer" could appear.	The SYNC folder is opened by another program. Please close all applications, which are using the SYNC folder.
You cannot create a SYNC folder with a name you used for another, deleted, SYNC folder.	This happens only under Windows 98. Please restart Windows 98. After restart, you can create the new SYNC folder.
Not enough memory on the target drive (Freecom SL) during creation of SYNC folder.	Delete files on the target drive (Freecom SL) or select less files.
Not enough memory on the target drive (Freecom SL) during synchronization.	Delete files on the target drive (Freecom SL).

WARRANTY (valid in Europe/Turkey only):

We thank you for purchasing this Freecom product and hope you will enjoy using it. In order to avoid unnecessary inconvenience on your part, we suggest reading the quick install guide, instruction manual and any additional electronic and or printed manuals. When problems occur we have a database with Frequently Asked Questions (FAQ) on our Freecom website (www.freecom.com), please check this site before you contact the helpdesk.

Your Guarantee

All Freecom products come with unlimited technical phone and web support. By this Guarantee, Freecom warrants their products to be free from defects in material and workmanship for a period listed below from the date of its original purchase. If during this period of guarantee the product proves defective due to improper materials or workmanship, Freecom will, without charge for labour or parts, at its sole discretion, repair or replace the product or its defective parts upon the terms and conditions set out below.

Conditions

This guarantee will be granted only when the original invoice or sales receipt (indicating the date of purchase, product and serial number) is presented together with the defective product and a Freecom RMA number received from the Freecom Website or given by a Freecom Service Center. Freecom reserves the right to refuse the free-of-charge guarantee services when the date of purchase of the product cannot be proven. This guarantee will not apply if the RMA number is missing, the serial number on the product has been altered, removed or made illegible.

This guarantee covers only the hardware components packaged with the product. This guarantee covers none of the following: (a) any consumable supplied with the product, such as media or batteries; (b) damage to or loss of any software programs, data or removable storage media; (c) any damage resulting from adaptations, changes or adjustments, which may have been made to the product, without the prior written consent of Freecom; (d) attempted repair by any party other than authorized by Freecom and (e) accidents, lightning, water, fire or any other such cause beyond the reasonable control of Freecom.

With respect to all services provided, Freecom is not responsible for any damage to or loss of any programs, data or other information stored on any media or any part of any product serviced. Freecom is not liable for the consequence of business loss in case of system failure. Be sure to exclude all parts not covered by this guarantee prior to returning the product to Freecom. Freecom is not liable for any loss or damage to these items. If during the repair of the product the contents of the hard drive are altered, deleted or in any way modified, Freecom is not liable whatsoever.

Repair parts and replacement products will be provided on an exchange basis and will be either new, equivalent to new or reconditioned. All replaced parts and products become the property of Freecom. The period of guarantee for any product or part repaired or replaced in warranty shall be the balance of the original guarantee. Repairs or replacements on product or parts out of warranty carry 6 (six) months guarantee.

All Freecom products come with unlimited free technical phone and web support.

<i>Freecom Product</i>	<i>Warranty period</i>
Traveller & Portable	1 year (Two years in Europe)
Classic & Internal Series	1 year (Two years in Europe)
FC- & FX-SERIES, FS-1	1 year (Two years in Europe)
FHD-1/FHD-2/FHD-xs & FireWire Harddrive	1 year (Two years in Europe)
USBCard	1 year (Two years in Europe)
DAT & LTO Drives (retail)	3 years
DAT-S Kits	2 years
ThinServer*	1 year (Two years in Europe)
Beatman	1 year (Two years in Europe)
Cables	1 year (Two years in Europe)

* Controller inside 3 years after online registration only.

(GB)