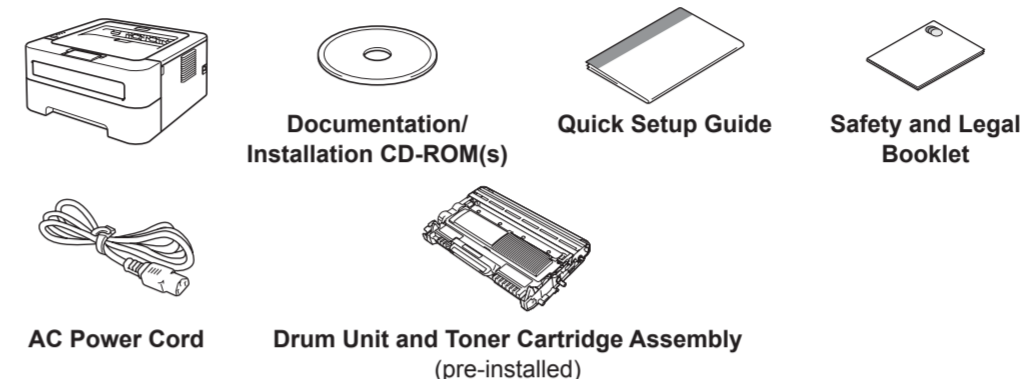


## Start Here

- WARNING** **WARNING** indicates a potentially hazardous situation which, if not avoided, could result in death or serious injuries.
- CAUTION** **CAUTION** indicates a potentially hazardous situation which, if not avoided, may result in minor or moderate injuries.

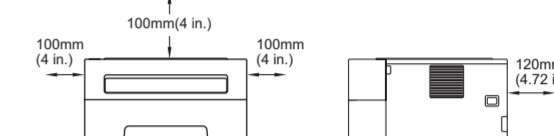
### 1 Unpack the machine and check the components

- Note**
- We recommend that you save the original packaging.
  - The components included in the box may differ depending on your country.
  - If for any reason you must ship your machine, carefully repack the machine in the original packaging to avoid any damage during transit. The machine should be adequately insured with the carrier. How to repack the machine in the *User's Guide*.
  - The interface cable is not a standard accessory. Buy the appropriate interface cable for the interface you want to use (USB or Network).
- USB cable**  
It is recommended to use a USB 2.0 cable (Type A/B) that is no more than 2 meters (6 feet) long.
- Network cable**  
Use a straight-through Category5 (or greater) twisted-pair cable for 10BASE-T or 100BASE-TX Fast Ethernet Network.



**WARNING**  
Plastic bags are used in the packaging of your machine. Plastic bags are not toys. To avoid danger of suffocation, please keep these bags away from babies and children and dispose of them properly.

**Note**  
Keep a minimum gap around the machine as shown in the illustration.



### 2 Remove the packing material from the machine

**IMPORTANT**

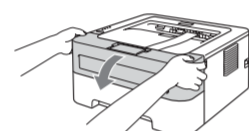
DO NOT connect the AC power cord yet.

**a.** Remove the packing tape from the outside of the machine and the silica gel pack from the face-down output tray.

**CAUTION**

DO NOT eat the Silica Pack. Please discard. If ingested seek medical attention immediately.

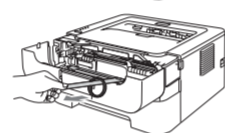
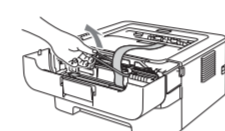
**b.** Open the front cover.



**c.** Lift the elastic band off the drum.

**d.** Pull the paper strip to remove the protective material as shown in the illustration.

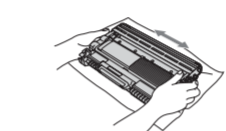
**e.** Take out the drum unit and toner cartridge assembly.



**f.** Gently shake it from side to side several times to distribute the toner evenly inside the assembly.

**g.** Put the drum unit and toner cartridge assembly back in the machine.

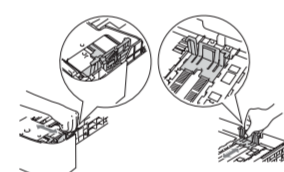
**h.** Close the front cover of the machine.



### 3 Load paper in the paper tray

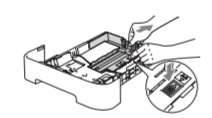
**a.** Pull the paper tray completely out of the machine.

**b.** While pressing the green paper-guide release lever, slide the paper guides to fit the paper size you are loading in the tray. Make sure that the guides are firmly in the slots.



**Note**

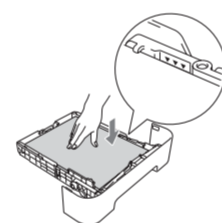
For Legal or Folio size paper, press the release button in the bottom of the paper tray and then pull out the back of the paper tray. (Legal or Folio size paper are not available in some regions.)



**c.** Fan the stack of paper well to avoid paper jams and misfeeds.

**d.** Put paper in the tray and make sure:

- The paper is below the maximum paper mark (▼▼▼).
- Over filling the paper tray will cause paper jams.
- The side to be printed on must be face down.
- The paper guides touch the sides of the paper so it will feed properly.



**e.** Put the paper tray firmly back in the machine. Make sure that it is completely inserted into the machine.

For more information about recommended paper, see *Recommended paper and print media* in the *User's Guide*.

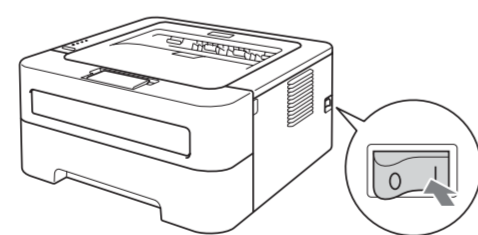
### 4 Print a test page

**IMPORTANT**

DO NOT connect the interface cable yet.

**a.** Connect the AC power cord to the machine and then connect it to an AC power outlet.

**b.** Turn on the machine power switch.

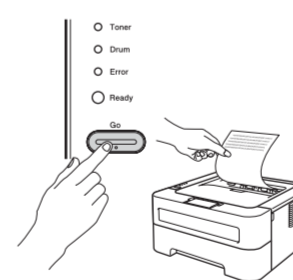


**c.** After the machine has finished warming up, the **Ready** LED stops blinking and stays green.

**d.** Press **Go**. The machine will print a test page. Check that the test page has printed correctly.

**Note**

This function will not be available after the first print job you send from your computer.



**Now go to**  
Turn the sheet over to install the printer driver.

### Printer LED Indications

Blinking: or or ON: or or OFF:

Printer LED	OFF	SLEEP DEEP SLEEP	WARMING UP COOLING DOWN <sup>1</sup>	READY	RECEIVING DATA DATA REMAINING <sup>2</sup>
Toner					
Drum					
Error					
Ready					

Printer LED	TONER LOW <sup>3</sup>	REPLACE TONER <sup>1</sup>	TONER ENDED	DRUM END SOON <sup>3</sup>	REPLACE DRUM
Toner					
Drum					
Error					
Ready					
User's Guide	Chapter 4	Chapter 4	Chapter 4	Chapter 4	Chapter 4

Printer LED	COVER OPEN PAPER JAM <sup>2</sup>	NO PAPER	DRUM ERROR <sup>2</sup>	DRUM STOP	Service call error <sup>2</sup>
Toner					
Drum					
Error					
Ready					
User's Guide	Chapter 5	Chapter 5	Chapter 4	Chapter 4	Chapter 3

<sup>1</sup> The LED will blink ON and OFF at 1 second intervals.  
<sup>2</sup> The LED will blink ON and OFF at 0.5 second intervals.  
<sup>3</sup> The yellow LED will blink in a pattern of ON for 2 seconds and then OFF for 3 seconds.  
<sup>4</sup> You can change the toner setting to the continue mode. Press **Go** seven times (all the LED flashes twice, and then the **Ready** LED is on). The machine continues printing until the LED indicates the toner ended message.

### Consumables

When the time comes to replace consumable items, an error will be indicated by the LED's on the control panel. For more information about the consumables for your machine, visit us at <http://www.brother.com/original/> or contact your local Brother reseller.

Toner cartridge	Drum unit

For replacing the consumable items, see *Replacing consumable items* in the *User's Guide*.

### For Network Users (For HL-2250DN only)

#### Web Based Management (web browser)

The Brother print server is equipped with a web server that allows you to monitor its status or change some of its configuration settings, using HTTP (Hyper Text Transfer Protocol).

**Note**

- The login name for the Administrator is 'admin' (case sensitive) and the default password is 'access'.
- We recommend Microsoft® Internet Explorer® 6.0 (or greater) or Firefox 3.0 (or greater) for Windows® and Safari 3.0 (or greater) for Macintosh. Please also make sure that JavaScript and Cookies are always enabled in whichever browser you use. To use a web browser, you will need to know the IP Address of the print server. The IP Address of the print server is listed on the Print Setting Page.

**a.** Type `http://machine_ip_address/` into your browser. (Where `machine_ip_address` is the IP Address or the print server name)

- For example: `http://192.168.1.2/`

See *Web Based Management* in the *Network User's Guide*.



#### Reset the network settings to the factory default

You can reset the print server back to its default factory settings (resetting all information such as the password and IP address information).

- Turn off the machine.
- Make sure that the front cover is closed and the power cord is plugged in.

**c.** Hold down **Go** as you turn on the power switch. Keep **Go** pressed down until all the LEDs light up and then **Ready** LED turns off.

**d.** Release **Go**. Make sure that all the LEDs turn off.

**e.** Press **Go** six times. Make sure that all the LEDs light up to indicate the print server has been reset to its factory default settings. The machine will restart.



## For Windows®

### Before you install

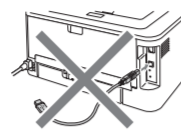
Make sure that your computer is ON and you are logged on with Administrator rights.

- IMPORTANT**
- If there are any programs running, close them.
  - The screens may differ depending on your operating system.

- Note**
- For Windows Vista® and Windows® 7 users, when the User Account Control screen appears, click **Allow** or **Yes**.
  - Depending on your security settings, a Windows Security or antivirus software window may appear when using the machine or its software. Please allow or permit the window to continue.
  - **XML Paper Specification Printer Driver**  
The XML Paper Specification Printer Driver is the most suitable driver when printing from the applications that use the XML Paper Specification documents. Please download the latest driver by accessing the Brother Solutions Center at <http://solutions.brother.com/>.

### 5 For USB Interface Cable Users

- a.** Turn off the machine and make sure the USB interface cable is **NOT** connected to the machine, and then begin installing the printer driver. If you have already connected the cable, disconnect it.



#### Install the printer driver

- b.** Put the installation CD-ROM into your CD-ROM drive. If prompted, select your model and language.

**Note**  
If the Brother screen does not appear automatically, go to **My Computer (Computer)**, double-click the CD-ROM icon, and then double-click **start.exe**.

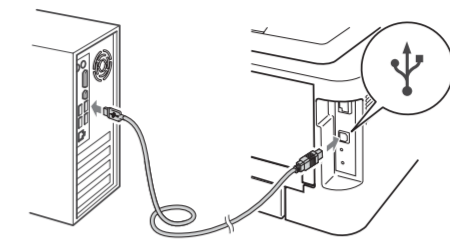
- c.** Click **Install Printer Driver**, and click **Yes** if you accept the license agreement.



- d.** Follow the on-screen instructions until this screen appears.



- e.** Connect the USB cable to the USB connector marked with the symbol, and then connect the cable to the computer.



- f.** Turn the machine on, and follow the on-screen instructions to complete setup.

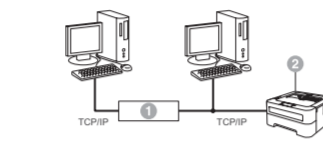
**Finish**

The installation is now complete.

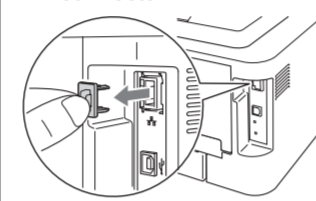
### 5 For Wired Network Cable Users (HL-2250DN only)

**Note**  
If you are going to connect the machine to your network, we recommend that you contact your system administrator prior to installation.

#### For Peer-to-Peer network users

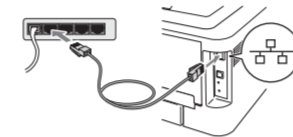


- 1 Router
- 2 Machine



- a.** Remove the protective cap from the LAN connector.

- b.** Connect the network cable to the LAN connector marked with a symbol and then connect it to a free port on your hub.



- c.** Make sure the machine power switch is on.

#### Install the printer driver

- d.** Put the installation CD-ROM into your CD-ROM drive. If prompted, select your model and language.

**Note**  
If the Brother screen does not appear automatically, go to **My Computer (Computer)**, double-click the CD-ROM icon, and then double-click **start.exe**.

- e.** Click **Install Printer Driver**, and click **Yes** if you accept the license agreement.



- f.** Follow the on-screen instructions to complete setup.

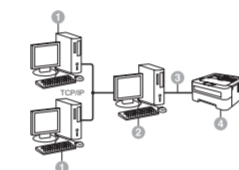
**Note**  
You can find your machine's IP Address and the node name by printing out the **Printer Settings Page**. See *Print the Printer Settings Page* below.

**Finish**

The installation is now complete.

**Note**  
If you use a specified IP Address for the machine, you must set the Boot Method to Static by using the BRAdmin Light. For more information, see *Changing your machine's network settings* in the *Network User's Guide*.

#### For shared network users



- 1 Client computer
- 2 Also known as "Server" or "Print server"
- 3 TCP/IP or USB
- 4 Machine

#### Install the printer driver

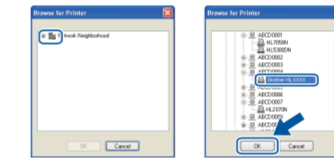
- a.** Put the installation CD-ROM into your CD-ROM drive. If prompted, select your model and language.

**Note**  
If the Brother screen does not appear automatically, go to **My Computer (Computer)**, double-click the CD-ROM icon, and then double-click **start.exe**.

- b.** Click **Install Printer Driver**, and click **Yes** if you accept the license agreement.



- c.** Follow the on-screen instructions until this screen appears. Choose your machine's queue, and then click **OK**.



**Note**  
Contact your administrator if you do not know the location or the name of the machine queue on the network.

- d.** Follow the on-screen instructions to complete setup.

**Finish**

The installation is now complete.

## For Mac OS X

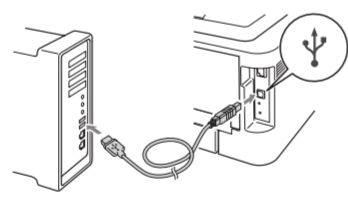
### Before you install

- IMPORTANT**
- For the latest drivers and information on the Mac OS X you are using, visit <http://solutions.brother.com/>.
  - For Mac OS X 10.4.0 to 10.4.10 users, upgrade to Mac OS X 10.4.11 - 10.6.x.

Make sure your machine is plugged in and your Macintosh is switched ON. You must be logged on with Administrator rights.

### 5 For USB Interface Cable Users

- a.** Connect the USB cable to the USB connector marked with a symbol, and then connect the cable to your Macintosh.



- IMPORTANT**
- **DO NOT** connect the printer to a USB port on a keyboard or a non-powered USB hub.
  - Connect the printer directly to your computer.

- b.** Make sure the machine power switch is on.

#### Install the printer driver

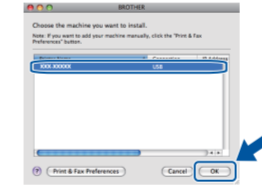
- c.** Put the installation CD-ROM into your CD-ROM drive.

- d.** Double-click the **Start Here OSX** icon. Follow the on-screen instructions.



**Note**  
It may take a few minutes for installation to complete.

- e.** Follow the on-screen instructions until this screen appears. Choose your machine from the list, and then click **OK**.



- f.** Click **Next**.

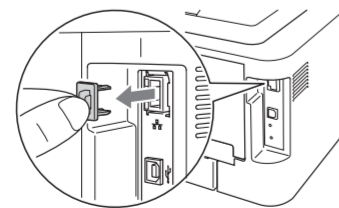
**Note**  
When the **Brother Support** screen appears, make your selection and follow the on-screen instructions.

**Finish**

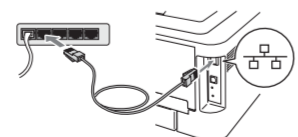
The installation is now complete.

### 5 For Wired Network Cable Users (HL-2250DN only)

- a.** Remove the protective cap from the LAN connector.



- b.** Connect the network cable to the LAN connector marked with a symbol and then connect it to a free port on your hub.



- c.** Make sure the machine power switch is on.

#### Install the printer driver

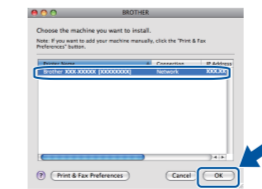
- d.** Put the installation CD-ROM into your CD-ROM drive.

- e.** Double-click the **Start Here OSX** icon. Follow the on-screen instructions.



**Note**  
It may take a few minutes for installation to complete.

- f.** Follow the on-screen instructions until this screen appears. Choose your machine from the list, and then click **OK**.



**Note**

- If there is more than one of the same model connected on your network, the MAC Address (Ethernet Address) will be displayed after the model name.
- You can find your machine's MAC Address (Ethernet Address) and IP Address by printing out the **Printer Settings Page**. See *Print the Printer Settings Page* on the right.

- g.** Click **Next**.

**Note**  
When the **Brother Support** screen appears, make your selection and follow the on-screen instructions.

**Finish**

The installation is now complete.

**Note**  
If you use a specified IP Address for the machine, you must set the Boot Method to Static by using the BRAdmin Light. For more information, see *Changing your machine's network settings* in the *Network User's Guide*.

### Print the Printer Settings Page

The Printer Settings Page lists all the current printer settings, including network settings.

- Make sure that the front cover is closed and the power cord is plugged in.
- Turn on the machine and wait until the machine is in the Ready state.
- Press **Go** three times within 2 seconds. The machine will print the current printer settings page.

**Note**  
**For Network Users**  
If the IP Address on the Printer Settings Page shows **0.0.0.0**, wait for one minute and try again.

### Brother CreativeCenter



Get inspired. If you're using Windows, double-click the Brother CreativeCenter icon on your desktop to access our FREE web site with many ideas and resources for personal and professional use.

Mac users can access Brother CreativeCenter at this web address: <http://www.brother.com/creativecenter/>