

Adobe[®] PostScript[®] 3[™] Expansion Unit

User's Guide

CMP0020-00 EN



Copyrights and Trademarks

Copyrights and Trademarks

No part of this publication may be reproduced, stored in a retrieval system, or transmitted in any form or by any means, electronic, mechanical, photocopying, recording, or otherwise, without the prior written permission of Seiko Epson Corporation. The information contained herein is designed only for use with this Epson printer. Epson is not responsible for any use of this information as applied to other printers.

Neither Seiko Epson Corporation nor its affiliates shall be liable to the purchaser of this product or third parties for damages, losses, costs, or expenses incurred by the purchaser or third parties as a result of accident, misuse, or abuse of this product or unauthorized modifications, repairs, or alterations to this product, or (excluding the U.S.) failure to strictly comply with Seiko Epson Corporation's operating and maintenance instructions.

Seiko Epson Corporation shall not be liable for any damages or problems arising from the use of any options or any consumable products other than those designated as Original Epson Products or Epson Approved Products by Seiko Epson Corporation.

Seiko Epson Corporation shall not be held liable for any damage resulting from electromagnetic interference that occurs from the use of any interface cables other than those designated as Epson Approved Products by Seiko Epson Corporation.

EPSON®, EPSON EXCEED YOUR VISION, EXCEED YOUR VISION and their logos are registered trademarks or trademarks of Seiko Epson Corporation.

Microsoft®, Windows®, Windows Vista® and PowerPoint® are registered trademarks of Microsoft Corporation. Wingdings is a registered trademark of Microsoft Corporation in the United States and other countries.

Apple®, AppleTalk®, Mac®, Macintosh®, Mac OS®, Bonjour®, ColorSync®, and TrueType® are registered trademarks of Apple Inc.

Intel® is a registered trademark of Intel Corporation.

PowerPC® is a registered trademark of International Business Machines Corporation.

Adobe®, Acrobat®, Adobe® RGB (1998), Adobe SansMM, Adobe SerifMM, Carta®, PostScript®, PostScript logo, and Tekton® are either registered trademarks or trademarks of Adobe Systems Incorporated in the United States and/or other countries.

Monotype is a trademark of Monotype Imaging, Inc. registered in the United States Patent and Trademark Office and may be registered in certain jurisdictions.

Albertus, Arial, Gill Sans, Joanna and Times New Roman are trademarks of The Monotype Corporation.

Coronet is a registered trademark of Ludlow Type Foundry.

ITC AvantGarde, ITC Bookman, ITC Lubalin, ITC Mona Lisa Recut, ITC Symbol, ITC Zapf Chancery and ITC Zapf Dingbats are trademarks of International Typeface Corporation.

Clarendon, Helvetica, New Century Schoolbook, Optima, Palatino, Stemple Garamond, Times and Univers are trademarks of Linotype Library GmbH and/or its subsidiaries.

Marigold and Oxford are trademarks of AlphaOmega Typography.

Antique Olive is a trademark of Marcel Olive and may be registered in certain jurisdictions.

Eurostile is trademark of Nebiolo.

Copyrights and Trademarks

NewYork, Apple Chancery, Chicago, Geneva, Hoefler Text and Monaco are trademarks of Apple Computer, Inc.

General Notice: Other product names used herein are for identification purposes only and may be trademarks of their respective owners. Epson disclaims any and all rights in those marks.

© 2014 Seiko Epson Corporation. All rights reserved.

Contents

Copyrights and Trademarks

Before You Begin

Notes on This Guide.	5
Meanings of Symbols.	5
Operating System Versions.	5
License Information.	5
Features.	6
Simulation.	6
Direct Print.	6
Hard Disk.	6
Notes on Use.	6
Introducing the Supplied Software.	7
Contents of the Software Disc.	7

Setting up the Software

Windows.	8
Installing the PS Driver.	8
Installing PS Folder.	8
Mac OS X.	9
Installation and Setup.	9
Installing PS Folder.	9
Uninstalling PS Driver Software.	10
Windows.	10
Mac OS X.	11

PS Driver Options

How the PS Driver Differs from the Standard Printer Driver.	12
Windows.	12
Mac OS X.	21

Using the Supplied Software

EPSON LFP Remote Panel 2.	30
Storing and Using Custom Paper Sizes.	30
PS Folder.	32
Supported File Types.	32
Using PS Folder.	32
Advanced Settings.	33

Troubleshooting

Control Panel Messages.	35
---------------------------------	----

Unable to Print.	36
Errors Occur.	36
Printer Inoperable.	36
Encrypted PDFs Not Printing.	36
PS Files Not Printing.	36
Print Quality Issues.	36
Printed Font/Characters Do Not Match Display.	36
Letters or Images Are Ragged.	36
Light-Colored Lines Are Broken.	36
Colors Do Not Match.	36
Printing Results Are Uneven.	37
Other Issues.	37
PS Driver Limitations.	37
Restrictions on Installing Printer Fonts.	37

Appendix

System Requirements.	38
Samples of Built-in Fonts.	38
PostScript Fonts.	38
TrueType Fonts.	42

Software License Terms

Open Source Software Licenses.	44
--	----


Before You Begin


Before You Begin

Notes on This Guide

Meanings of Symbols

 Warning:	Warnings must be followed to avoid serious bodily injury.
---	---

 Caution:	Cautions must be followed to avoid damage to this product or bodily injury.
---	---

 Important:	Notes contain important information on the operation of this product.
---	---

Note:	Tips contain useful or additional information on the operation of this product.
--------------	---

Operating System Versions

In this documentation, the following abbreviations are used.

Windows refers to Windows 8.1, 8, 7, Vista, XP.

- Windows 8.1 refers to Windows 8.1, Windows 8.1 Pro, and Windows 8.1 Enterprise.
- Windows 8 refers to Windows 8, Windows 8 Pro, and Windows 8 Enterprise.
- Windows 7 refers to Windows 7 Home Basic, Windows 7 Home Premium, Windows 7 Professional, and Windows 7 Ultimate.
- Windows Vista refers to Windows Vista Home Basic Edition, Windows Vista Home Premium Edition, Windows Vista Business Edition, Windows Vista Enterprise Edition, and Windows Vista Ultimate Edition.

- Windows XP refers to Windows XP Home Edition, Windows XP Professional x64 Edition, and Windows XP Professional.
- Windows Server 2012 refers to Windows Server 2012 Essentials Edition, Server 2012 standard Edition.
- Windows Server 2008 refers to Windows Server 2008 Standard Edition and Windows Server 2008 Enterprise Edition.
- Windows Server 2008 x64 refers to Windows Server 2008 x64 Standard Edition, Windows Server 2008 x64 Enterprise Edition, Windows Server 2008 R2 Standard Edition, and Windows Server 2008 R2 Enterprise Edition.
- Windows Server 2003 refers to Windows Server 2003 Standard Edition and Windows Server 2003 Enterprise Edition.
- Windows Server 2003 x64 refers to Windows Server 2003 x64 Standard Edition and Windows Server 2003 x64 Enterprise Edition.

Macintosh refers to Mac OS X.

- Mac OS X refers to Mac OS X 10.5.8 and later versions.

License Information

Adobe Systems holds the rights to portions of this manual, which are used with permission.

Before You Begin

Features

The main features of this product are described below.

Simulation

This product supports “SWOP”, “Euroscale”, “Japan Color2001” and other CMYK simulations, allowing you to preview results for offset printing. RGB colors can also be simulated using RGB profiles. The RGB simulations available include Adobe RGB, sRGB, and Apple RGB. The product is also capable of RGB output close to that produced by the (standard) printer driver supplied with the printer. The product supports the following color correction options: “Business Graphics”, “Epson Standard (sRGB)”, and “Line Drawing”.

Direct Print

The supplied “PS Folder” utility lets you print files by dragging and dropping them onto the PS Folder icon. There is no need to launch an application.

Hard Disk

The hard disk supports the same features as the optional hard disk unit. You can:

- Display pending print jobs
- View and restart paused print jobs
- View and restart saved jobs

Attached to a compatible printer with an optional scanner for large-format multifunction printers, the product allows the device to double as a copier and scanner. For information on supported accessories and hard disk and scanning features, see the manual supplied with the printer.

Notes on Use

Observe the following precautions when using this product:

- This product is for printers only and can not be used with computers or other devices.

For the latest information on supported printers, visit the Epson website (<http://www.epson.com>).

- The hard disk may require formatting before the product can be used with other supported printers. The hard disk can be formatted using the Administrator Menu > **Manage HDD** option in the device control panel.
- Data transferred to this product can not be copied to computers or other devices.
- Data may be recoverable from this product after it has been formatted. Epson recommends that this product be physically destroyed prior to disposal.

Data Stored on This Product

Data stored on this product can not be copied to a computer. Be sure that the original data for print jobs stored on this device have been saved to a computer. Data may be deleted from this device as a result of:

- Static electricity or electrical noise
- Operator error
- Malfunction or repairs
- Natural disasters and other acts of God

Even should it occur within the warranty period, Epson will not be held liable for loss or recovery of data stored on this device as a result of any cause, including but not limited to those listed above.

Before You Begin

Introducing the Supplied Software

Contents of the Software Disc

The supplied software disc contains the following software. Install as required.

Software name	
Epson Driver and Utilities	<p>The following software is installed.</p> <p>Printer Driver The PS printer driver is required when using this device. The PS printer driver is installed if installation is performed during product setup. 🔗 "How the PS Driver Differs from the Standard Printer Driver" on page 12</p> <p>EPSON LFP Remote Panel 2 This application is used for custom paper settings. See online help for details.</p>
PS Folder	<p>This application lets you print files in supported formats (PS, EPS, PDF, TIFF, JPEG, and CALS-G4) by dragging and dropping them onto the PS Folder icon, eliminating the need to open files in another application. 🔗 "PS Folder" on page 32</p>

Setting up the Software

Setting up the Software

Windows

When installing this software, log in to an account with administrator privileges.

Installing the PS Driver

Follow the steps below to install the PS driver and EPSON LFP Remote Panel 2.

Note:

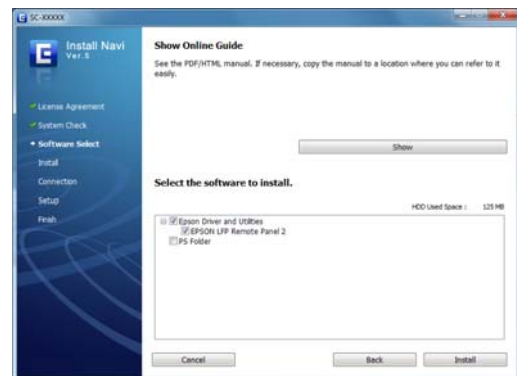
- Exit any anti-virus software before running the installer.
- For information on your network setup, contact the network administrator.
- If the computer is part of a network, configure the printer so it is visible on the network. Adjust network settings with reference to the printer manual.

- 1 Confirm that the printer is off.
- 2 Start Windows and insert the supplied software disc.
 - (1) In the **AutoPlay** dialog, confirm that the publisher is SEIKO EPSON and click to proceed.
 - (2) Click **Yes** or **Continue** in the **User Account Control** dialog.
- 3 When the license agreement is displayed, read the agreement, select **Accept**, and click **Next**.
- 4 Follow the on-screen instructions to complete installation.

Installing PS Folder

This section describes how to install PS Folder. Install as required.

- 1 Start Windows and insert the supplied software disc.
 - (1) In the **AutoPlay** dialog, confirm that the publisher is SEIKO EPSON and click to proceed.
 - (2) Click **Yes** or **Continue** in the **User Account Control** dialog.
- 2 When the license agreement is displayed, read the agreement, select **Accept** and click **Next**.
- 3 Follow the on-screen instructions until the following dialog is displayed.



- 4 After reviewing the dialog displayed in Step 3 to ensure that **PS Folder** is the only option selected, click **Install**.
- 5 Follow the on-screen instructions to complete installation.

Setting up the Software

Mac OS X

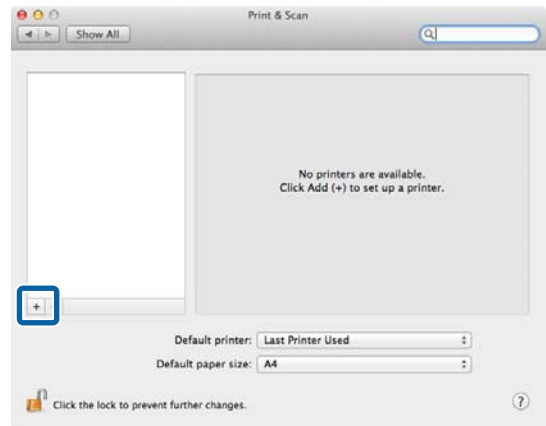
Installation and Setup

Configure the printer after installing the PS driver and EPSON LFP Remote Panel 2.

- 1 Confirm that the printer is off.
- 2 Start Mac OS X and insert the supplied software disc.
- 3 Click Install Navi.
- 4 When the license agreement is displayed, read the agreement, select **Accept** and click **Next**.
- 5 Follow the on-screen instructions to complete installation.
- 6 Turn the printer on.
- 7 Select **System Preferences** in the Apple menu and click **Print & Scan** (or **Print & Fax**).

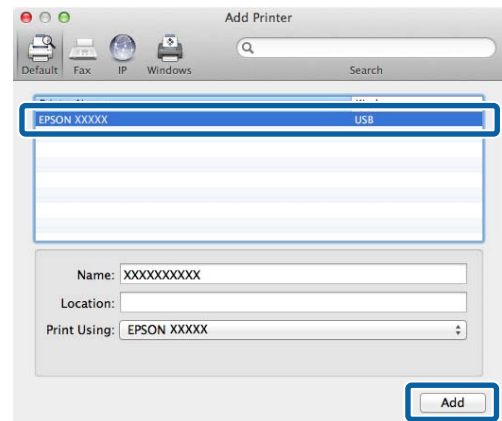


- 8 Click +.



- 9 Select your printer and click **Add**.

Note:
If your printer does not appear next to **Print Using**, reselect your printer and click **Add**.



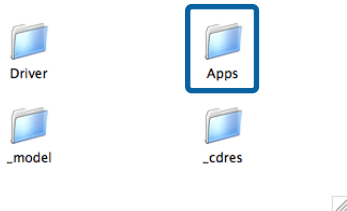
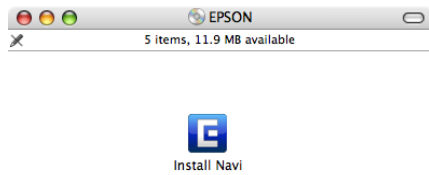
Installing PS Folder

This section describes how to install PS Folder. Install as required.

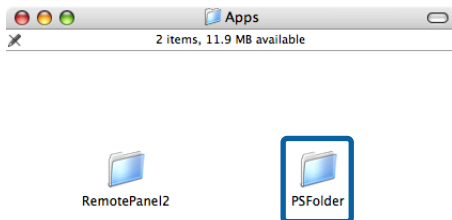
- 1 Start Mac OS X and insert the supplied software disc.

Setting up the Software

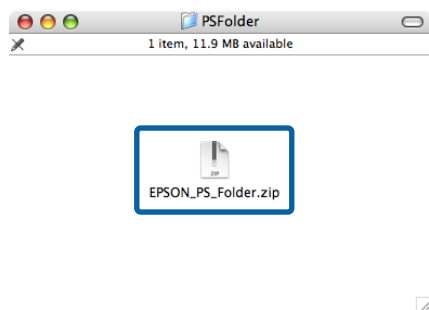
- 2 Scroll down to the **Apps** folder, which is concealed at the bottom of the window, and open it.



- 3 Click **PSFolder**.



- 4 Copy the zip file to the desktop and extract it.



Uninstalling PS Driver Software

Windows

Follow the steps below to uninstall the PS driver and the supplied software.



Important:

- Log in to an account with administrator privileges.
- Enter the administrator password if prompted.

- 1 In the case of PS Folder, the first step is to manually delete user-created folders by dragging them into the Recycle Bin.

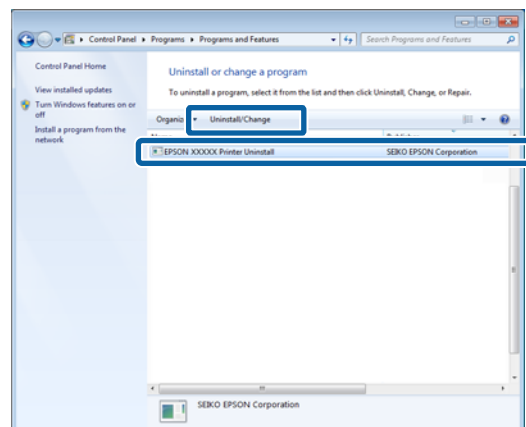
Proceed to the next step to delete the driver and other software.

- 2 Turn the product off and disconnect the interface cable.

- 3 Open the **Control Panel** and select **Programs > Uninstall a program**.

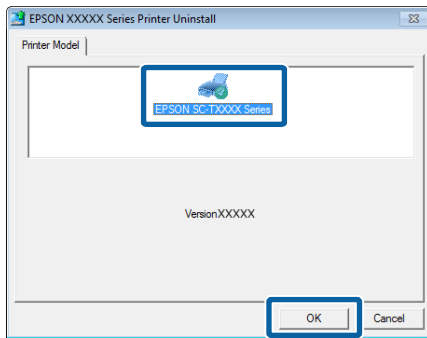


- 4 Select the software you want to uninstall and click **Uninstall/Change** (or **Change/Remove** or **Add/Remove**).



Setting up the Software

- 5** If you selected the printer driver, select the icon for this product and click **OK**.



- 6** Follow the on-screen instructions to complete the process.

If a confirmation dialog is displayed, click **Yes**.

If you intend to reinstall the PS driver, restart the computer.

Mac OS X

Uninstall the PS driver or software before upgrading to a new version or reinstalling the current version.

Uninstalling the Printer Driver

Use the “Uninstaller”.

Downloading the Uninstaller

Download the “Uninstaller” from the Epson website.

<http://www.epson.com/>

Using the Uninstaller

Follow the instructions provided at the site from which you downloaded the “Uninstaller”.

Uninstalling the EPSON LFP Remote Panel 2

Drag the **EPSON Remote Panel 2** folder from **Applications** into the **Trash**.

Uninstalling the PS Folder

Manually delete user-created folders by dragging them into the **Trash**.

PS Driver Options

How the PS Driver Differs from the Standard Printer Driver

Before describing the PS driver supplied with this product, this manual will explore the differences between it and the standard driver supplied with the printer. A separate description of the features unique to the PS driver is given for each operating system. For information on the standard driver supplied with the printer, see online help.

 [“Windows” on page 12](#)

 [“Mac OS X” on page 21](#)

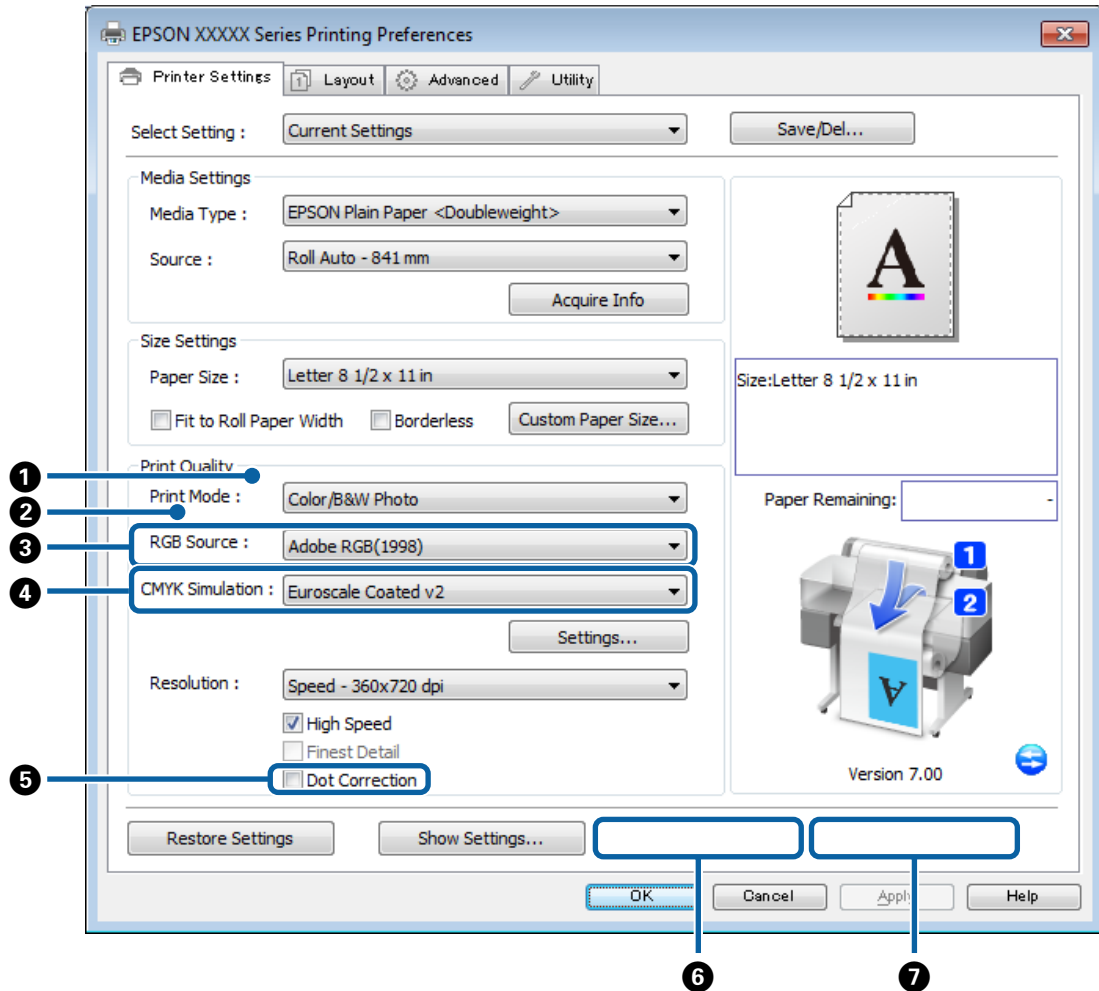
Windows

Using the dialog for the PS driver supplied with this product as a guide, this section explores the differences between it and the standard driver supplied with the printer and describes the features unique to the PS printer driver.

PS Driver Options

The Printer Settings Tab

Except when **PostScript Color Transformation** is selected in the dialog displayed when the **Speed and Progress** button is clicked in the **Utility** tab, the PS and standard printer driver dialogs are distinguished only by the **Edge Smoothing** option.



Differences Between the Two Driver Dialogs

Item	Standard driver supplied with printer	PS driver supplied with this product
①	Select Target	Not available
②	Color Mode	Not shown, but can be adjusted by clicking Settings button to display Color Controls dialog.
③	Not available	RGB Source
④	Not available	CMYK Simulation
⑤	Edge Smoothing	Dot Correction
⑥	Print Preview	Not available
⑦	Layout Manager	Not available

Features Unique to the PS Printer Driver

Asterisks (“*”) indicate factory default settings.

PS Driver Options

Item	Option	Description	
3	RGB Source	Choose the simulated RGB color definition when printing RGB data. This option is not available when black is selected.	
		sRGB	The color standard for most monitors.
		Adobe RGB (1998) *	A color standard defined by Adobe.
		Apple RGB	The color standard for Apple monitors.
		ColorMatch RGB	The color standard for Radius PressView monitors.
		Off	No simulation.

PS Driver Options

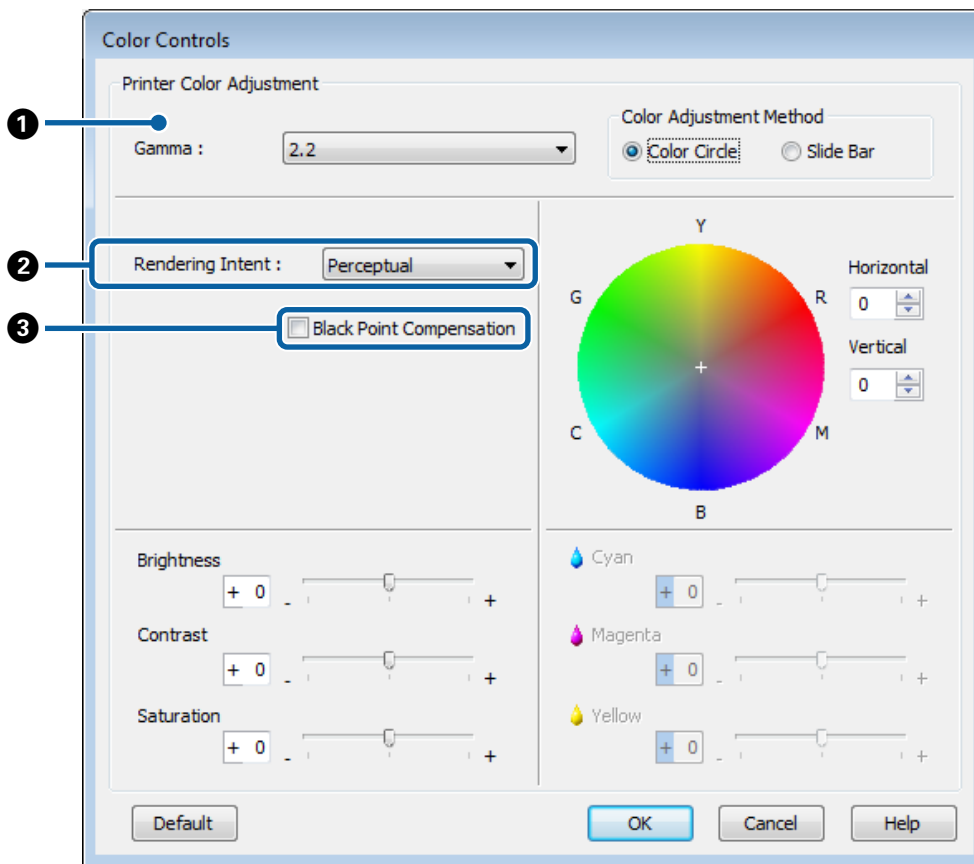
Item	Option	Description
4	CMYK Simulation	Choose the simulated CMYK color definition for output that reproduces the colors of the CMYK inks used in offset printing. This option is not available when black is selected.
	SWOP v2	A standard used in the US publishing industry for color printing on coated paper.
	US Web Uncoated v2	A standard used in the US publishing industry for color printing on wood free paper.
	US Sheetfed Coated v2	A standard used in the US publishing industry for color printing on coated paper.
	US Sheetfed Uncoatedv2	A standard used in the US publishing industry for color printing on wood free paper.
	Coated GRACoL 2006	An US color standard for sheet-fed offset printing on Grade 1 paper.
	SWOP Grade 3 Paper	A standard used in the US publishing industry for color printing on Grade 3 paper.
	SWOP Grade 5 Paper	A standard used in the US publishing industry for color printing on Grade 5 paper.
	Coated FOGRA27	An ISO color standard for offset printing on coated paper.
	Web Coated FOGRA28	An ISO color standard for offset printing on web-coated paper.
	Uncoated FOGRA29	An ISO color standard for offset printing on wood free paper.
	Coated FOGRA39	An ISO color standard for offset printing on offset glossy or matte-coated paper.
	Euroscale Coated v2 *	A European color standard for offset printing on coated paper.
	Euroscale Uncoated v2	A European color standard for offset printing on wood free paper.
	JapanWebCoated (Ad)	A color standard developed by the Japan Magazine Publishers Association (JMPA).
	JapanColor2001Coated	A Japanese color standard, developed principally by the ISO/TC130 National Committee, for printing on coated paper.
	JapanColor2001Uncoated	A Japanese color standard, developed principally by the ISO/TC130 National Committee, for printing on wood free paper.
	JapanColor2002Newspape	A Japanese color standard for newsprint, developed principally by the ISO/TC130 National Committee.
	JapanColor2003WebCoate	Version 2 of a color standard developed by the Japan Magazine Publishers Association (JMPA).
	EPSON_TOYO	A color standard developed by Epson and adapted to the unique colors of Toyo inks.
EPSON_DIC	A color standard developed by Epson and adapted to the unique colors of DIC inks.	
	Off	No simulation.

PS Driver Options

Item	Option	Description
5	Dot Correction	This option may or may not be displayed, depending on the selected Media Type. Select it to improve the fidelity of line reproduction and reduce broken or deformed lines in output from CAD programs and the like.

The Color Controls Dialog

This section describes the differences in the **Color Controls** dialog, which is displayed by clicking the **Settings** button in the **Printer Settings** tab. Except when **PostScript Color Transformation** is selected in the dialog displayed when the **Speed and Progress** button is clicked in the **Utility** tab, the PS and standard printer driver dialogs are identical.



Differences Between the Two Driver Dialogs

Item	Standard driver supplied with printer	PS driver supplied with this product
1	Mode	Not available
2	Not available	Rendering Intent
3	Not available	Black Point Compensation

Features Unique to the PS Printer Driver

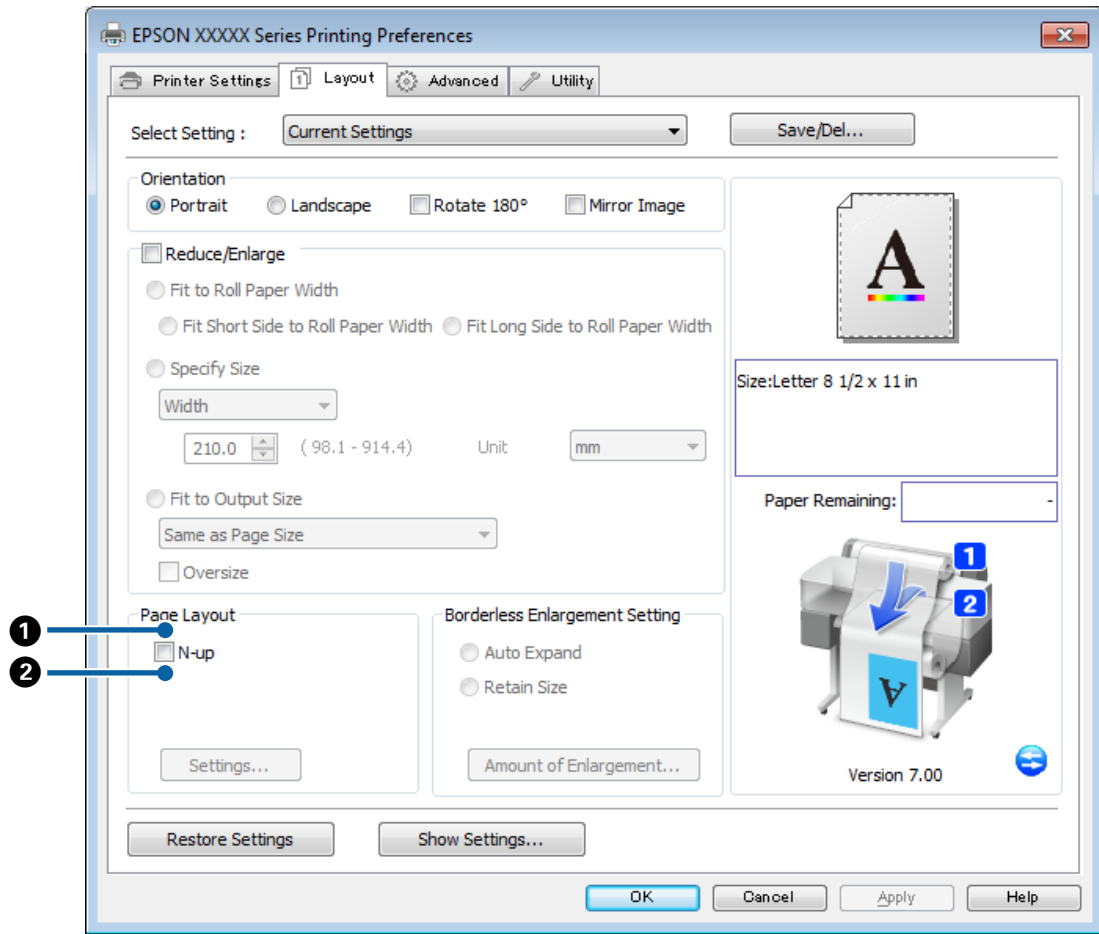
Asterisks (“*”) indicate factory default settings.

PS Driver Options

Item	Option	Description	
<p>2</p>	<p>Rendering Intent</p>	<p>Choose from the following four color-space conversion options (rendering intents) for CMYK and RGB simulations.</p>	
		<p>Absolute</p>	<p>Absolute color coordinates are used to adapt the colors in the original data to the color space used in printing. No color correction is applied to the white point (color temperature) in the original data or printed output. Choose this option for logo colors and other jobs where accurate color reproduction is required.</p>
		<p>Relative</p>	<p>The color coordinates and white point (color temperature) of the output color space are matched to those of the color space used in the original data. This method is frequently used for color matching.</p>
		<p>Perceptual *</p>	<p>Colors are converted for a natural-looking match. Choose this option for photographs.</p>
		<p>Saturation</p>	<p>Greater weight is given to the vividness of colors than to the accuracy with which they are reproduced. Choose this option for business graphics, including graphs and figures, in which bright colors are preferred.</p>
<p>3</p>	<p>Black Point Compensation</p>	<p>Select this option if you notice loss of detail in shadows when converting from a color space with a wide gamut to one with a narrow gamut.</p> <p>This option is off by default.</p>	

PS Driver Options

The Layout Tab

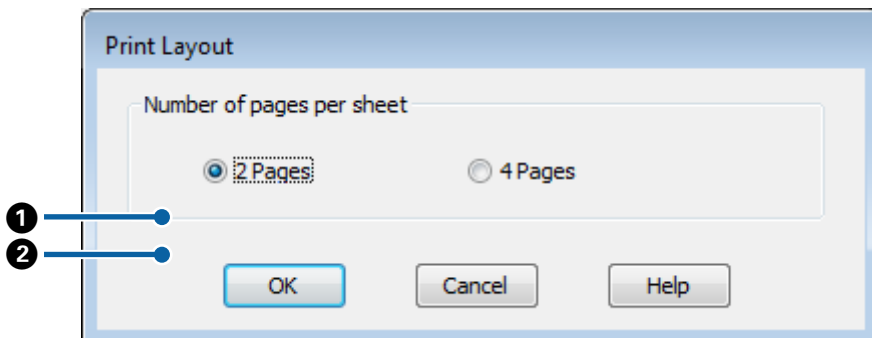


Differences Between the Two Driver Dialogs

Item	Standard driver supplied with printer	PS driver supplied with this product
1	Folded Double-Side	Not available
2	Poster	Not available

The Print Layout Dialog

This section describes the differences in the **Print Layout** dialog, which is displayed by clicking the **Page Layout > Settings** button in the **Layout** tab.

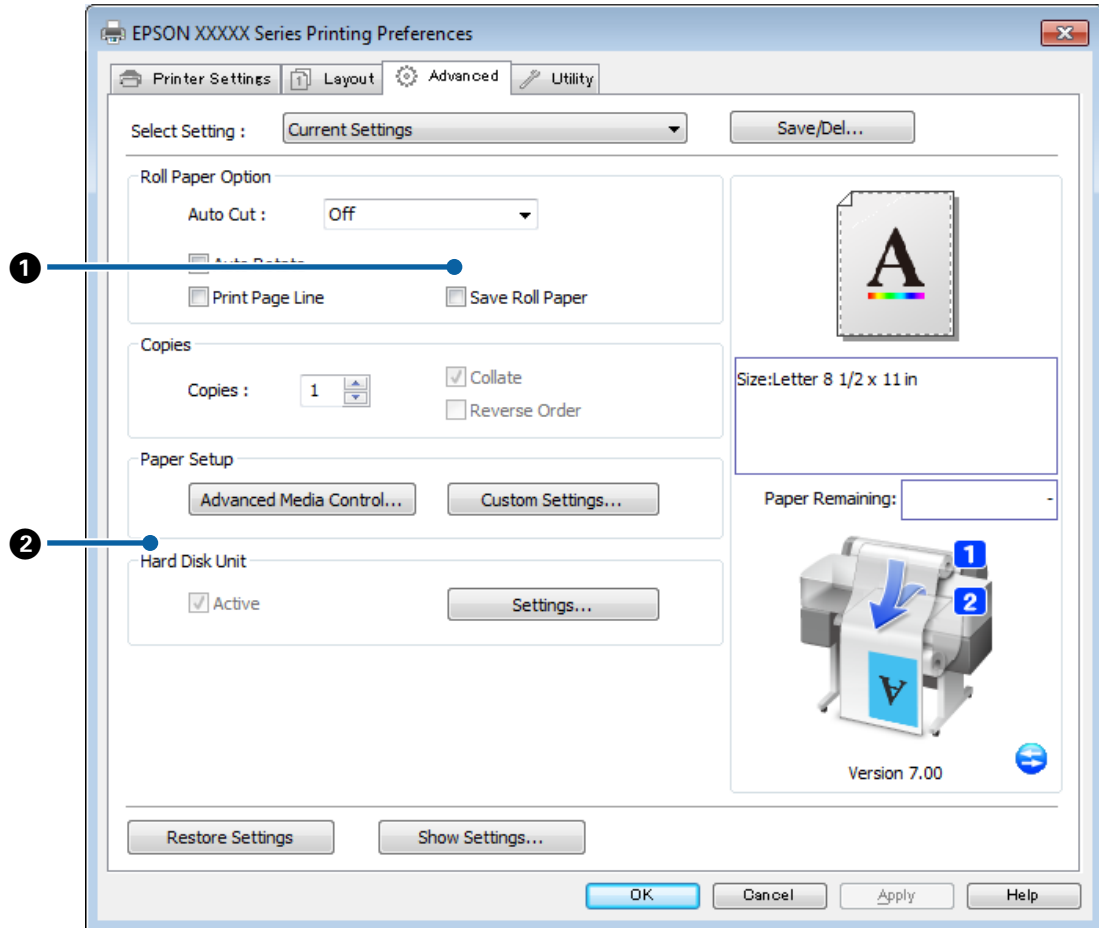


PS Driver Options

Differences Between the Two Driver Dialogs

Item	Standard driver supplied with printer	PS driver supplied with this product
1	Page Order	Not available
2	Print page frames	Not available

The Advanced Tab



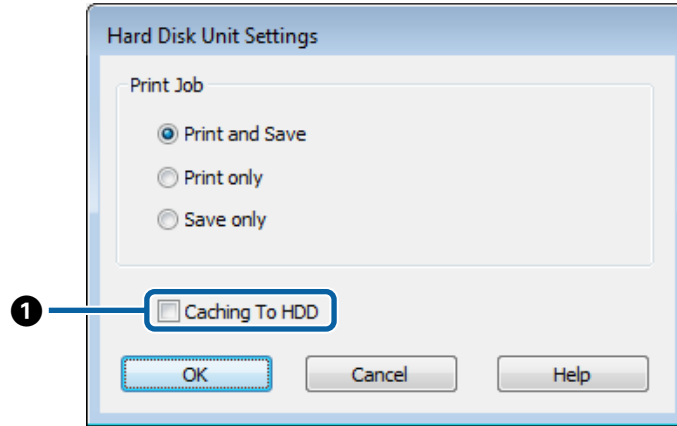
Differences Between the Two Driver Dialogs

Item	Standard driver supplied with printer	PS driver supplied with this product
1	Banner	Not available
2	Other Settings	Not available

PS Driver Options

The Hard Disk Unit Settings Dialog

This section describes the differences in the **Hard Disk Unit Settings** dialog, which is displayed by clicking the **Settings** button in the **Advanced** tab.



Differences Between the Two Driver Dialogs

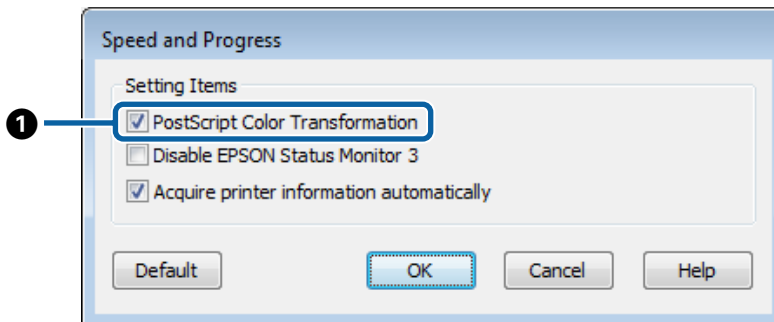
Item	Standard driver supplied with printer	PS driver supplied with this product
1	Print after Transmission Completed	Caching to HDD

Features Unique to the PS Printer Driver

Item	Option	Description
1	Caching to HDD	This item should not be selected in normal circumstances. Select this option only if the print head stops frequently during printing while the unit is processing data.

The Speed and Progress Dialog

This section describes the differences in the **Speed and Progress** dialog, which is displayed by clicking the **Speed and Progress** button in the **Utility** tab.



PS Driver Options

Differences Between the Two Driver Dialogs

Item	Standard driver supplied with printer	PS driver supplied with this product
❶	Not available	PostScript Color Transformation This option is on by default.
	High Speed Copies	Not available
	Show Progress Meter	
	Disable EPSON Status Monitor 3	
	Check media type before printing	
	Acquire printer information automatically	
	Process print data by printer	
	Always spool RAW datatype	
	Page Rendering Mode	
	Coarse Rendering	
	Print as Bitmap	
	Allow Applications to Perform ICM Color Matching	
	Change Standard Resolution	
	Optimize Enlargement	

Features Unique to the PS Printer Driver

Item	Option	Description
❶	PostScript Color Transformation	Select this option to process colors using the target CMYK or RGB profile for PostScript color conversion. If this option is not selected, the unit will process colors in the same way as the standard driver supplied with the printer, and different options will be listed in the Color Controls dialog, which is displayed by clicking the Settings button in the Printer Settings tab.

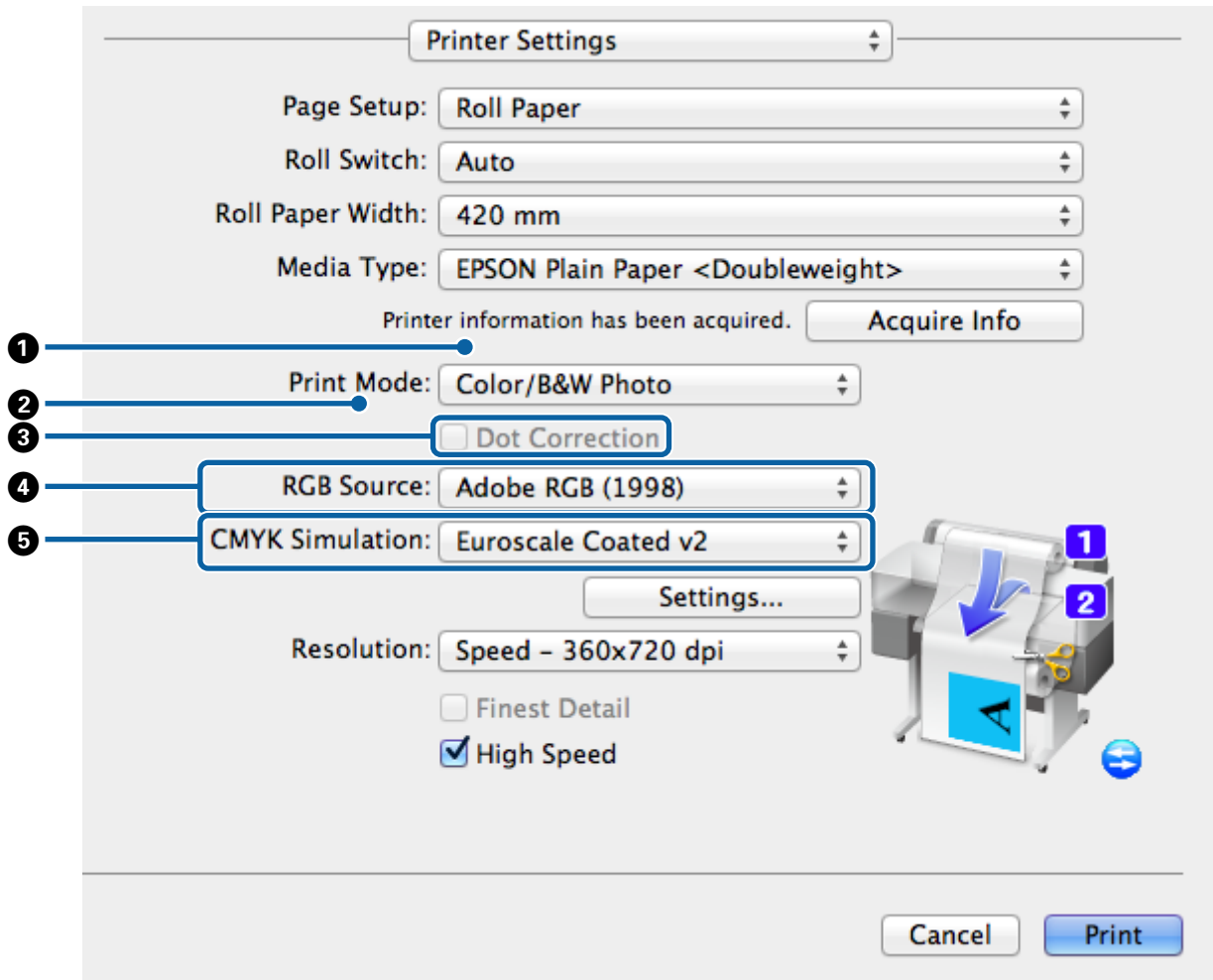
Mac OS X

Using the dialog for the PS driver supplied with this product as a guide, this section explores the differences between it and the standard driver supplied with the printer and describes the features unique to the PS printer driver.

PS Driver Options

The Printer Settings Dialog

With the exception of **Edge Smoothing**, the dialog displayed when **Off** is selected for **PostScript Color Transformation** in the driver options dialog is identical to that displayed by the standard driver supplied with the printer.



Differences Between the Two Driver Dialogs

Item	Standard driver supplied with printer	PS driver supplied with this product
①	Select Target	Not available
②	Color Mode	Not shown, but can be adjusted by clicking Settings button to display Color Controls dialog.
③	Edge Smoothing	Dot Correction
④	Not available	RGB Source
⑤	Not available	CMYK Simulation

Features Unique to the PS Printer Driver

Asterisks (“*”) indicate factory default settings.

PS Driver Options

Item	Option	Description	
3	Dot Correction	<p>This option may or may not be displayed, depending on the selected Media Type.</p> <p>Select it to improve the fidelity of line reproduction and reduce broken or deformed lines in output from CAD programs and the like.</p>	
4	RGB Source	<p>Choose the simulated RGB color definition when printing RGB data. This option is not available when black is selected.</p>	
		sRGB	The color standard for most monitors.
		Adobe RGB (1998) *	A color standard defined by Adobe.
		Apple RGB	The color standard for Apple monitors.
		ColorMatch RGB	The color standard for Radius PressView monitors.
		Off	No simulation.

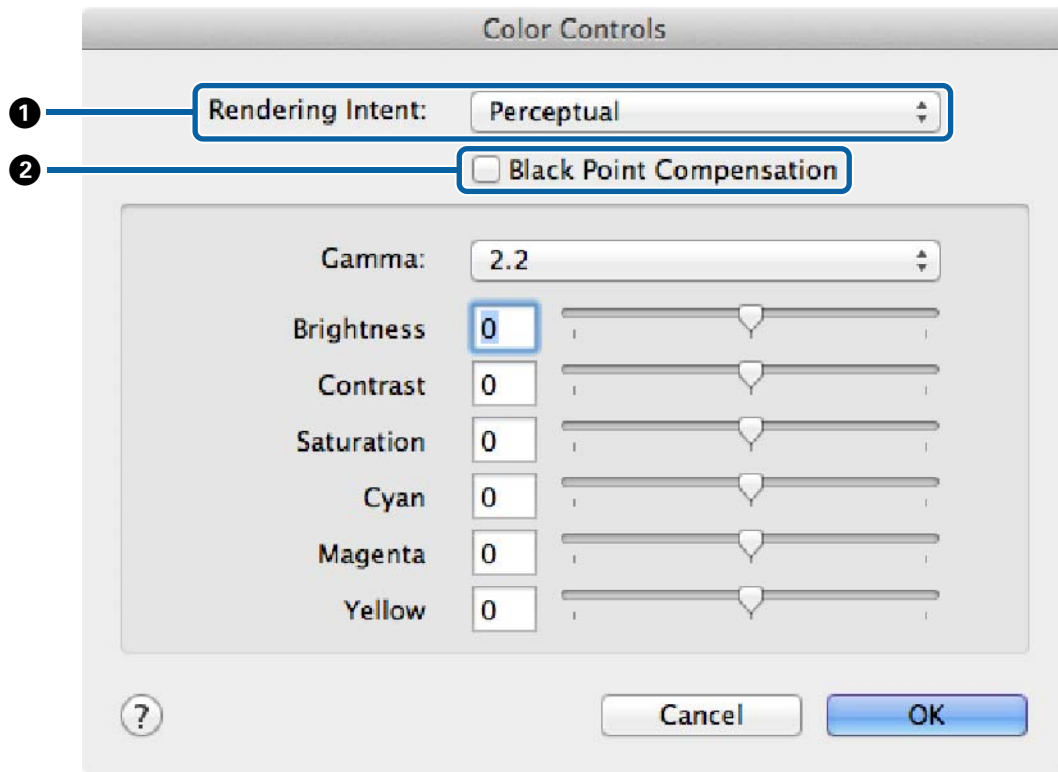
PS Driver Options

Item	Option	Description
5	CMYK Simulation	Choose the simulated CMYK color definition for output that reproduces the colors of the CMYK inks used in offset printing. This option is not available when black is selected.
	SWOP v2	A standard used in the US publishing industry for color printing on coated paper.
	US Web Uncoated v2	A standard used in the US publishing industry for color printing on wood free paper.
	US Sheetfed Coated v2	A standard used in the US publishing industry for color printing on coated paper.
	US Sheetfed Uncoatedv2	A standard used in the US publishing industry for color printing on wood free paper.
	Coated GRACoL 2006	An US color standard for sheet-fed offset printing on Grade 1 paper.
	SWOP Grade 3 Paper	A standard used in the US publishing industry for color printing on Grade 3 paper.
	SWOP Grade 5 Paper	A standard used in the US publishing industry for color printing on Grade 5 paper.
	Coated FOGRA27	An ISO color standard for offset printing on coated paper.
	Web Coated FOGRA28	An ISO color standard for offset printing on web-coated paper.
	Uncoated FOGRA29	An ISO color standard for offset printing on wood free paper.
	Coated FOGRA39	An ISO color standard for offset printing on offset glossy or matte-coated paper.
	Euroscale Coated v2 *	A European color standard for offset printing on coated paper.
	Euroscale Uncoated v2	A European color standard for offset printing on wood free paper.
	JapanWebCoated (Ad)	A color standard developed by the Japan Magazine Publishers Association (JMPA).
	JapanColor2001Coated	A Japanese color standard, developed principally by the ISO/TC130 National Committee, for printing on coated paper.
	JapanColor2001Uncoated	A Japanese color standard, developed principally by the ISO/TC130 National Committee, for printing on wood free paper.
	JapanColor2002Newspape	A Japanese color standard for newsprint, developed principally by the ISO/TC130 National Committee.
	JapanColor2003WebCoate	Version 2 of a color standard developed by the Japan Magazine Publishers Association (JMPA).
	EPSON_TOYO	A color standard developed by Epson and adapted to the unique colors of Toyo inks.
EPSON_DIC	A color standard developed by Epson and adapted to the unique colors of DIC inks.	
Off	No simulation.	

PS Driver Options

The Color Controls Dialog

This section describes the differences in the **Color Controls** dialog, which is displayed by clicking the **Settings** button in the **Printer Settings** dialog. Note that the dialog displayed when **Off** is selected for **PostScript Color Transformation** in the driver options dialog is identical to that displayed by the standard driver supplied with the printer.



Differences Between the Two Driver Dialogs

Item	Standard driver supplied with printer	PS driver supplied with this product
①	Not available	Rendering Intent
②	Not available	Black Point Compensation

Features Unique to the PS Printer Driver

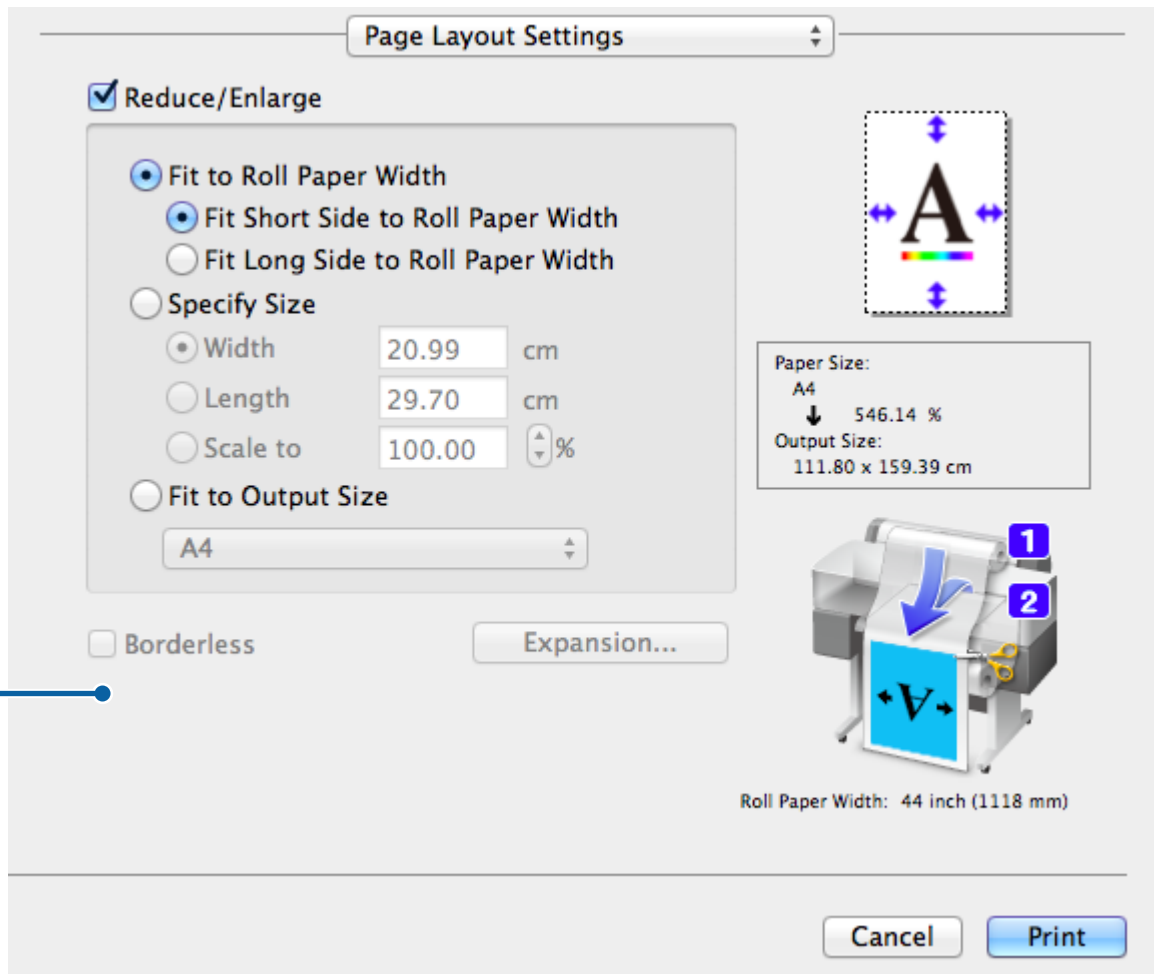
Asterisks (“*”) indicate factory default settings.

PS Driver Options

Item	Option	Description	
<p>1</p>	<p>Rendering Intent</p>	<p>Choose from the following four color-space conversion options (rendering intents) for CMYK and RGB simulations.</p>	
		<p>Absolute</p>	<p>Absolute color coordinates are used to adapt the colors in the original data to the color space used in printing. No color correction is applied to the white point (color temperature) in the original data or printed output. Choose this option for logo colors and other jobs where accurate color reproduction is required.</p>
		<p>Relative</p>	<p>The color coordinates and white point (color temperature) of the output color space are matched to those of the color space used in the original data. This method is frequently used for color matching.</p>
		<p>Perceptual *</p>	<p>Colors are converted for a natural-looking match. Choose this option for photographs.</p>
		<p>Saturation</p>	<p>Greater weight is given to the vividness of colors than to the accuracy with which they are reproduced. Choose this option for business graphics, including graphs and figures, in which bright colors are preferred.</p>
<p>2</p>	<p>Black Point Compensation</p>	<p>Select this option if you notice loss of detail in shadows when converting from a color space with a wide gamut to one with a narrow gamut.</p> <p>This option is off by default.</p>	

PS Driver Options

The Page Layout Settings Dialog



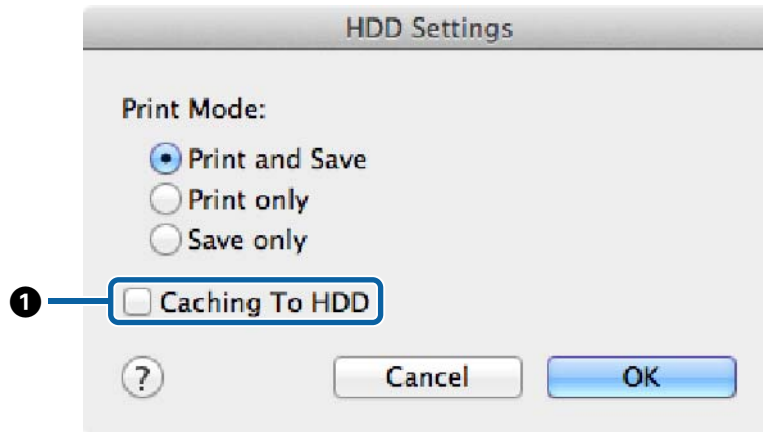
Differences Between the Two Driver Dialogs

Item	Standard driver supplied with printer	PS driver supplied with this product
1	Mirror Image	Not listed, but available in the Layout dialog.

PS Driver Options

The Hard Disk Unit Settings Dialog

This section describes the differences in the **Hard Disk Unit Settings** dialog, which is displayed by clicking the **Settings** button in the **Advanced** dialog.



Differences Between the Two Driver Dialogs

Item	Standard driver supplied with printer	PS driver supplied with this product
1	Print after Transmission Completed	Caching to HDD

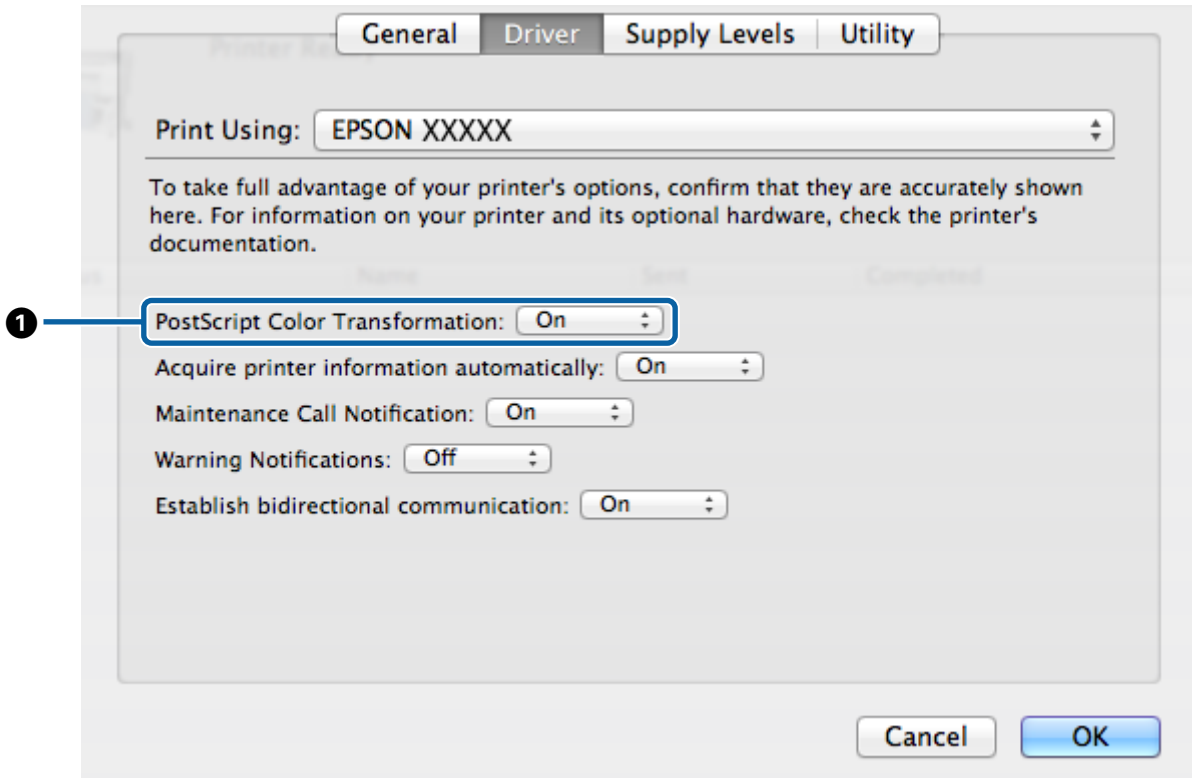
Features Unique to the PS Printer Driver

Item	Option	Description
1	Caching to HDD	This item should not be selected in normal circumstances. Select this option only if the print head stops frequently during printing while the unit is processing data. This option is off by default.

PS Driver Options

The Driver Options Dialog

This section describes the differences in the driver options dialog, which is displayed by selecting **System Preferences** in the Apple menu, clicking **Print & Scan**, and then clicking the **Options & Supplies...** button.



Differences Between the Two Driver Dialogs

Item	Standard driver supplied with printer	PS driver supplied with this product
1	Not available	PostScript Color Transformation This option is on by default.

Features Unique to the PS Printer Driver

Item	Option	Description
1	PostScript Color Transformation	Select On to process colors using the target CMYK or RGB profile for PostScript color conversion. If Off is selected, the unit will process colors in the same way as the standard driver supplied with the printer, and different options will be listed in the Color Controls dialog, which is displayed by clicking the Settings button in the Printer Settings dialog.

Using the Supplied Software

Using the Supplied Software

EPSON LFP Remote Panel 2

This chapter describes features in the version of EPSON LFP Remote Panel 2 supplied on the software disc bundled with this product that are available only when this product is connected. See online help for information on other features.

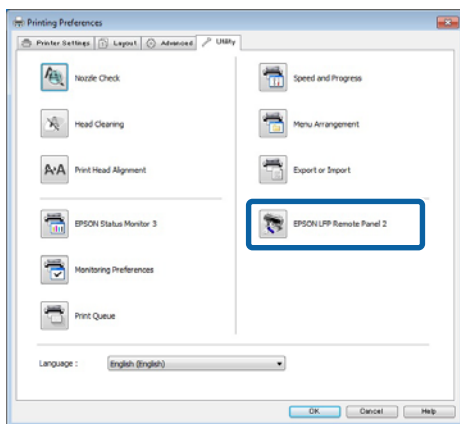
Storing and Using Custom Paper Sizes

When this product is connected to the printer, you can store custom paper sizes that include printer profiles from EPSON LFP Remote Panel 2. This section describes how to store and use custom paper sizes.

Launching EPSON LFP Remote Panel 2

Windows

- 1 Open the **Utility** tab in the **Print Setup** dialog for your PS driver.
- 2 Click **EPSON LFP Remote Panel 2**.



Mac OS X Versions 10.6.x or later

- 1 Select **System Preferences** in the Apple menu and click **Print & Scan** (or **Print & Fax**).

- 2 Select your printer and click **Options & Supplies** > **Utility** > **Open Printer Utility**.

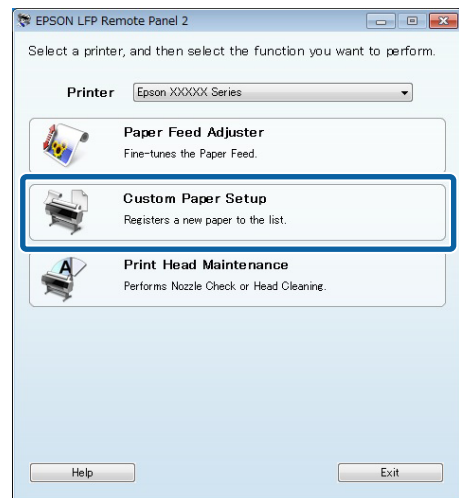
Mac OS X Version 10.5.8

- 1 Select **System Preferences** in the Apple menu and click **Print & Fax**.
- 2 Select your printer and click **Open Print Queue** > **Utility**.

Saving Custom Paper Sizes

Although the description in this section is illustrated with Windows dialogs, the procedure for Mac OS X is similar.

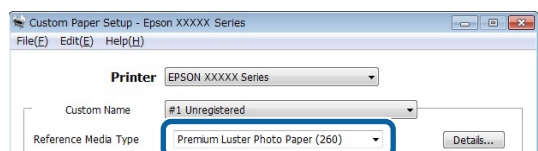
- 1 Click **Custom Paper Setup**.



- 2 Select **#X Unregistered** for **Custom Name**.



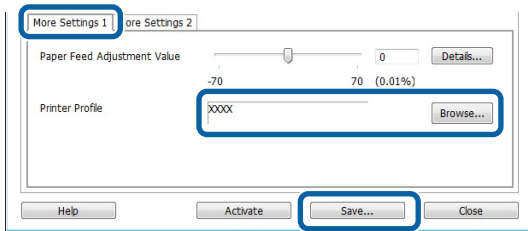
- 3 For **Reference Media Type**, select the media type used when the printer profile was created.



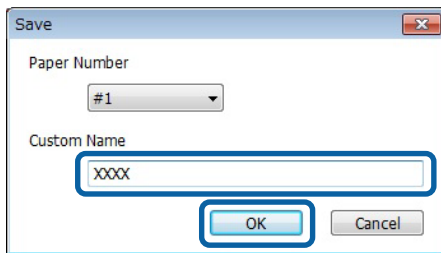
- 4 Adjust settings as required.

Using the Supplied Software

- 5** Click the **More Settings 1** tab, select a profile, and click **Save**.

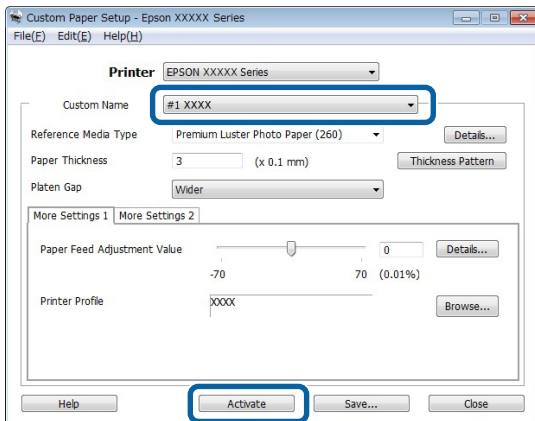


- 6** Enter a paper name in the **Save** dialog and click **OK**.



- 7** Confirm that the new custom paper name is displayed in the **Custom Paper Setup** dialog and click **Activate**.

After clicking **Activate**, exit the software.



Note:
Custom paper settings can also be activated from the printer control panel. For details, see the manual supplied with the printer.

- 8** Check custom paper settings.

Use the **PS Status Sheet** and **Print Paper List** options in the printer control panel to confirm that the new settings have been saved. For information on printing the status sheet and paper list, see the manual supplied with the printer.

Note:
Note that because custom paper settings may be changed if multiple users have access to the product, it is a good idea to provide a detailed description of each option (and file copies of the status sheet and paper list) when creating custom paper settings.

Print Settings

Configure the PS printer driver as follows when printing using custom paper settings:

- Confirm that the **PostScript Color Transformation** option is checked or that **On** is selected for **PostScript Color Transformation**.

[“The Speed and Progress Dialog” on page 20](#)

[“The Driver Options Dialog” on page 29](#)

- Confirm that the Media Type matches the **Reference Media Type** selected when the custom paper settings were created.

Note:
If the printer supports multiple rolls, confirm that the desired roll is selected for **Source**.

Deleting Custom Paper Settings

Custom paper settings can be deleted using the **Reset PS Settings** option in the printer control panel. Settings can not be deleted individually.

Using the Supplied Software

PS Folder

This section describes how to use the PS Folder application included on the software disc supplied with this product.

PS Folder lets you print files in supported formats by dragging and dropping them onto the PS Folder icon, eliminating the need to open files in another application. See the following sections for installation instructions.

Windows  [“Installing PS Folder” on page 8](#)

Mac OS X  [“Installing PS Folder” on page 9](#)

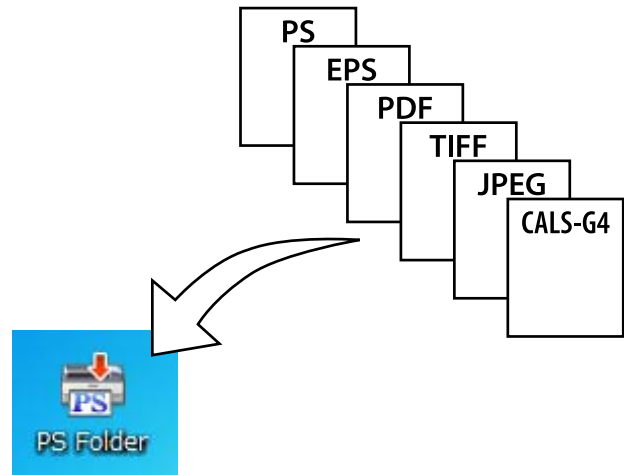
Supported File Types

File type	Description
PS	PostScript files (ASCII only)
EPS	Encapsulated PostScript files (ASCII only; binary not supported) If you are unable to print EPS files, select Add showpage in the file options and try again.
PDF	PDF version: PDF 1.7 Extension Level 3 (Adobe Acrobat 10.0 equivalent files with password protection are also supported) PDF files in versions later than 1.7 Extension Level 3 will print without errors so long as they do not use Extension Level functions.
TIFF	Tagged Image File Format files Baseline TIFF is supported. One pixel is treated as equivalent to one point. The following types of compression are supported: CCITT1D, Group 3 Fax, Group 4 Fax, LZW, JPEG, and PackBits (Run Length Encoding). ZIP compression, TIFF (TTN2), and 1-bit, YCbCr, multi-page, and alpha-channel TIFFs are not supported.

File type	Description
JPEG	Joint Photographic Experts Group files Baseline JPEG is supported. One pixel is treated as equivalent to one point. Progressive compression and JPEG 2000 are not supported.
CALS-G4 (Type 1)	Rasterized image files in CALS Type 1 format

Using PS Folder

An icon for this application is created on the desktop at installation. Files can be printed simply by dropping them onto the icon.



Creating Additional Icons

You can create additional PS Folder icons for other printers or printer settings. This section describes how to add PS Folder icons.

Windows

- 1** Right click on an empty area of the desktop to display a context menu.
- 2** Select **EPSON PS Folder** from the New submenu.

Enter a name for the new PS Folder.

Mac OS X

- 1** Double-click the EPSON_PS_Folder.zip icon on the desktop.

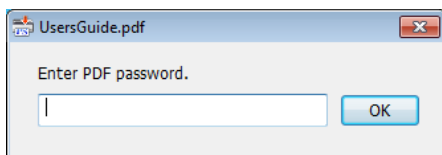
Using the Supplied Software

- 2 Move the newly-extracted copy of PS Folder to the desired location.

Printing Password-Protected PDF Files

Printing password-protected PDF files is simple. When you drop a password-protected PDF file onto the application icon on the desktop, you will be prompted to enter a password.* Enter the password and click **OK** to print the file.

- * Depending on PDF settings, you may not be prompted to enter a password. If a password-entry dialog is not displayed, enter the password using the printer control panel. For information on using the control panel, see the manual supplied with the printer.

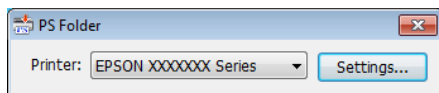


Advanced Settings

To display the main application dialog, double-click the icon on the desktop. Click **Settings** or **OK** to open the application properties dialog and view or adjust printer settings and file options.

Choosing a Printer

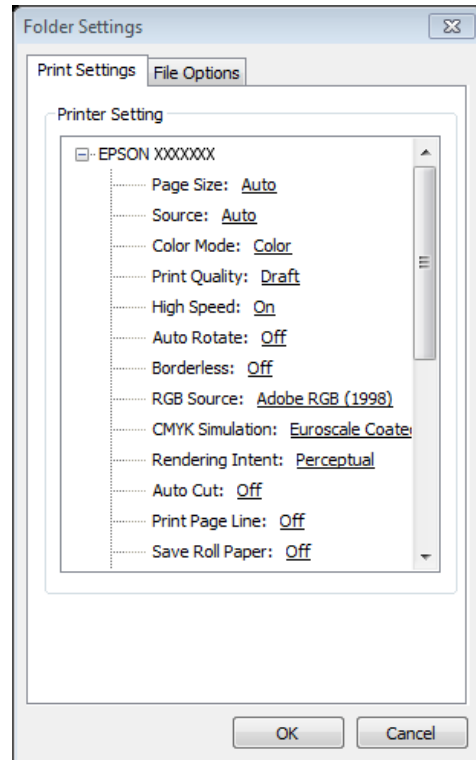
If a printer list is not displayed even though a PS driver supported by the application is installed on the computer, check that the PS driver is correctly installed. Choose a printer from the list. Under Mac OS X, the printer list will not be displayed again after you have selected a printer.



Printer Settings

Select the **Printer Settings** tab in the dialog displayed when you click the **Settings** button in the printer selection dialog (Windows) or double-click the application icon (Mac OS X).

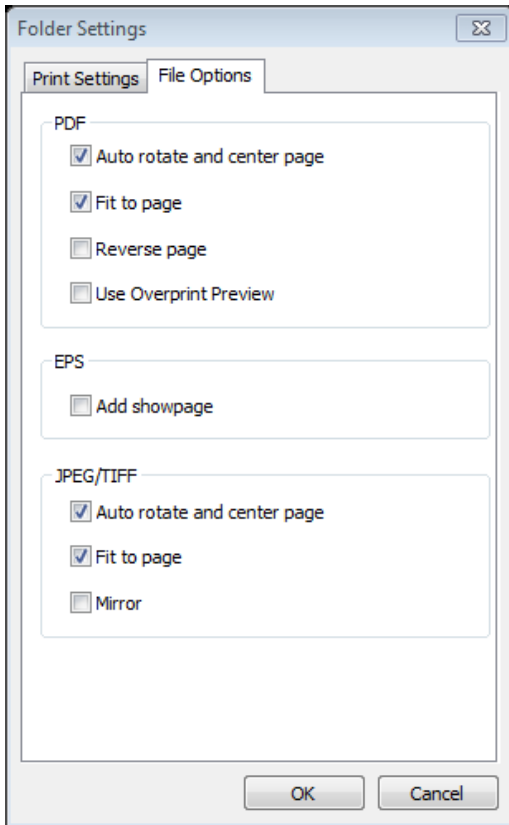
Adjust basic print settings for the application as a whole or make changes to print settings for individual files.



Using the Supplied Software

File Option

Select the **File Option** tab in the dialog displayed when you click the **Settings** button in the printer selection dialog (Windows) or double-click the application icon (Mac OS X). Adjust settings for each file type.



PDF

Option	Description
Auto rotate and Center Page	The print job is automatically rotated and printed in the center of pages of the selected size. Use the Page Size option in the Printer Settings tab to choose the page size. This option has no effect when Auto is selected for Page Size .
Fit to page	Fit output to the selected page size. Use the Page Size option in the Printer Settings tab to choose the page size. This option has no effect when Auto is selected for Page Size .
Reverse page	Reverse the order of pages when printing multi-page documents.
Use Overprint Preview	Show overprinted colors when printing.

EPS

Option	Description
Add showpage	Select this option if you are unable to print EPS files. This option adds a "showpage" command to EPS files. Some EPS files may require a "showpage" command; select this option if you are unable to print EPS files. If the file already contains a "showpage" command, selecting this option will result in a blank page being printed.

TIFF/JPEG

Option	Description
Auto rotate and Center Page	The print job is automatically rotated and printed in the center of pages of the selected size. Use the Page Size option in the Printer Settings tab to choose the page size. This option has no effect when Auto is selected for Page Size .
Fit to page	Fit output to the selected page size. Use the Page Size option in the Printer Settings tab to choose the page size. This option has no effect when Auto is selected for Page Size .
Mirror	Print a mirror image.

Troubleshooting

Troubleshooting

This chapter lists PostScript error messages and details the steps to take when the printer fails to print. For information on troubleshooting non-PostScript-related issues, see the manual supplied with the printer.

Control Panel Messages

If the message shown below is displayed, refer to the solution listed and take the necessary steps.

Message	What to do
Firmware Error Firmware mismatch between PS3 Expansion Unit and printer. Refer to manual for details.	The firmware version for this product does not match the printer firmware version. Update the firmware for the product and printer to the latest versions. The latest versions can be downloaded from the Epson website.

Troubleshooting

Unable to Print

This section describes how to deal with PostScript-related issues. For information on troubleshooting other problems, see the manual supplied with the printer.

Errors Occur

- **Does your operating system meet PS driver system requirements?**

PS driver system requirements are listed on the following page.

 ["System Requirements" on page 38](#)

Printer Inoperable

- **Are you using the correct printer driver?**

- **Windows**

Confirm that the PS driver is selected as the default printer.

(1) Click **Start** and select **Devices and Printers**.

In Windows 8.1/Windows 8, right click on the bottom left corner of the display and select **Control Panel** from the menu that appears. In Windows XP, click **Start** and select **Settings > Printers and Faxes**,

(2) Right click the icon for your PS driver.

(3) Confirm that the **Set as Default Printer** box is checked. If it is not, check it.

- **Mac OS X**

Confirm that your printer is listed in the Printer Setup Utility.

 ["Installation and Setup" on page 9](#)

Encrypted PDFs Not Printing

- **Does your account have printing privileges?**

Check your account privileges.

PS Files Not Printing

- **Does the printer recognize this product?**

Use the **Option Setup** command in the printer control panel to check whether the printer recognizes this product.

Print Quality Issues

Printed Font/Characters Do Not Match Display

- **Are the fonts embedded in the PDF file?**

If they are not, the fonts will be replaced as appropriate for printing.

Letters or Images Are Ragged

- **Is Speed selected for Printer Settings > Resolution?**

Select **Quality** or **High Quality** for **Resolution** in the **Advanced Settings** for **Print Quality** or **Mode**.

Light-Colored Lines Are Broken

- **Use Dot Correction.**

Colors Do Not Match

- **Are you comparing the output to that produced by the standard driver supplied with the printer?**

Try disabling the PostScript Color Transformation option in the PS driver supplied with this product.

- **Does the media match the Reference Media Type selected for custom paper settings that include printer profiles?**

Colors will not match if you do not use media selected for **Reference Media Type**. Check the **Reference Media Type**.

- **Have custom paper settings that include a printer profile been changed?**

If this product available to multiple users, custom settings may have been changed by another user. Check that current settings match those listed in the status sheet printed when the custom settings were created.

Troubleshooting

- **Is the printer set to the Paper Number used in the creation of custom paper settings that include a printer profile?**

If this product is available to multiple users, the setting may have been changed by another user. Use the printer driver **Acquire Info** option to check the **Paper Number**.

Printing Results Are Uneven

- **Is the print head pausing frequently?**

The print head may be pausing while the printer waits for data during printing. Try selecting **On for Caching To HDD** in the printer control panel menus.

Other Issues

PS Driver Limitations

Windows may not correctly spool the data for large print jobs. If this occurs, select **Print Directly to Printer** for **Advanced Options** in the printer properties dialog.

Restrictions on Installing Printer Fonts

- Do not print or perform other operations while installing printer fonts.
- When installing printer fonts, select **PostScript** for Administrator Menu > **Printer Mode** in the control panel. We recommend that you select **Auto** once installation is complete.

Appendix

System Requirements

The system requirements for installing and using the software for this product are listed below.

Windows

OS	Windows XP/Windows XP x64 Windows Vista/Windows Vista x64 Windows 7/Windows 7 x64 Windows 8/Windows 8 x64 Windows 8.1/Windows 8.1 x64 Windows Server 2003*/Windows Server 2003 x64*/Windows Server 2008*/Windows Server 2008 x64*/Windows Server 2008R2 x64*/Windows Server 2012*
CPU	Core 2 Duo 3.05 GHz or better
Available memory	1 GB or more
Available hard disk space	32 GB or more
Display resolution	WXGA (1280 × 768) or higher

* EPSON PS Folder and EPSON LFP Remote Panel 2 are not supported.

Note:

Log in to an "Administrator" account (an account with administrator privileges) when installing the software.

Mac OS X

OS	Mac OS X version 10.5.8 or later
CPU	Core 2 Duo 3.06 GHz or better
Memory	4 GB or more
Available hard disk space	32 GB or more
Display resolution	WXGA (1280 × 768) or higher

Samples of Built-in Fonts

PostScript Fonts

Albertus
ABCDEFGHIJKLMNOPQRSTUVWXYZ
abcdefghijklmnopqrstuvwxyz 0123456789

Albertus Italic
ABCDEFGHIJKLMNOPQRSTUVWXYZ
abcdefghijklmnopqrstuvwxyz 0123456789

Albertus Light
ABCDEFGHIJKLMNOPQRSTUVWXYZ
abcdefghijklmnopqrstuvwxyz 0123456789

Antipue Olive Roman
ABCDEFGHIJKLMNOPQRSTUVWXYZ
abcdefghijklmnopqrstuvwxyz 0123456789

Antipue Olive Italic
ABCDEFGHIJKLMNOPQRSTUVWXYZ
abcdefghijklmnopqrstuvwxyz 0123456789

Antipue Olive Bold
ABCDEFGHIJKLMNOPQRSTUVWXYZ
abcdefghijklmnopqrstuvwxyz 0123456789

Antipue Olive Compact
ABCDEFGHIJKLMNOPQRSTUVWXYZ
abcdefghijklmnopqrstuvwxyz 0123456789

Appendix

ITC Avant Garde Gothic Book

ABCDEFGHIJKLMN**OPQRSTUVWXYZ**
 abcdefghijklmnopqrstuvwxy **0123456789**

ITC Avant Garde Gothic Book Oblique

*ABCDEFGHIJKLMN**OPQRSTUVWXYZ***
abcdefghijklmnopqrstuvwxy 0123456789

ITC Avant Garde Gothic Demi

ABCDEFGHIJKLMNOPQRSTUVWXYZ****
abcdefghijklmnopqrstuvwxy 0123456789

ITC Avant Garde Gothic Demi Oblique

ABCDEFGHIJKLMN**OPQRSTUVWXYZ**
abcdefghijklmnopqrstuvwxy 0123456789

Bodoni

ABCDEFGHIJKLMN**OPQRSTUVWXYZ**
 abcdefghijklmnopqrstuvwxy 0123456789

Bodoni Italic

*ABCDEFGHIJKLMN**OPQRSTUVWXYZ***
abcdefghijklmnopqrstuvwxy 0123456789

Bodoni Bold

ABCDEFGHIJKLMNOPQRSTUVWXYZ****
abcdefghijklmnopqrstuvwxy 0123456789

Bodoni Bold Italic

ABCDEFGHIJKLMN**OPQRSTUVWXYZ**
abcdefghijklmnopqrstuvwxy 0123456789

Bodoni Poster

ABCDEFGHIJKLMNOPQRSTUVWXYZ****
abcdefghijklmnopqrstuvwxy 0123456789

Bodoni Poster Compressed

ABCDEFGHIJKLMNOPQRSTUVWXYZ****
abcdefghijklmnopqrstuvwxy 0123456789

ITC Bookman Light

ABCDEFGHIJKLMN**OPQRSTUVWXYZ**
 abcdefghijklmnopqrstuvwxy 0123456789

ITC Bookman Light Italic

*ABCDEFGHIJKLMN**OPQRSTUVWXYZ***
abcdefghijklmnopqrstuvwxy 0123456789

ITC Bookman Demi

ABCDEFGHIJKLMNOPQRSTUVWXYZ****
abcdefghijklmnopqrstuvwxy 0123456789

ITC Bookman Demi Italic

ABCDEFGHIJKLMN**OPQRSTUVWXYZ**
abcdefghijklmnopqrstuvwxy 0123456789

Carta


 0123456789

Clarendon

ABCDEFGHIJKLMNOPQRSTUVWXYZ****
abcdefghijklmnopqrstuvwxy 0123456789

Clarendon Light

ABCDEFGHIJKLMN**OPQRSTUVWXYZ**
 abcdefghijklmnopqrstuvwxy 0123456789

Clarendon Bold

ABCDEFGHIJKLMNOPQRSTUVWXYZ****
abcdefghijklmnopqrstuvwxy 0123456789

Cooper Black

ABCDEFGHIJKLMNOPQRSTUVWXYZ****
abcdefghijklmnopqrstuvwxy 0123456789

Cooper Black Italic

ABCDEFGHIJKLMN**OPQRSTUVWXYZ**
abcdefghijklmnopqrstuvwxy 0123456789

Copperplate Gothic 32BC

ABCDEFGHIJKLMN**OPQRSTUVWXYZ**
 ABCDEFGHIJKLMN**OPQRSTUVWXYZ** 0123456789

Copperplate Gothic 33BC

ABCDEFGHIJKLMNOPQRSTUVWXYZ****
ABCDEFGHIJKLMNOPQRSTUVWXYZ** 0123456789**

Coronet

*ABCDEFGHIJKLMN**OPQRSTUVWXYZ***
abcdefghijklmnopqrstuvwxy 0123456789

Courier

ABCDEFGHIJKLMN**OPQRSTUVWXYZ**
 abcdefghijklmnopqrstuvwxy 0123456789

Courier Oblique

*ABCDEFGHIJKLMN**OPQRSTUVWXYZ***
abcdefghijklmnopqrstuvwxy 0123456789

Courier Bold

ABCDEFGHIJKLMNOPQRSTUVWXYZ****
abcdefghijklmnopqrstuvwxy 0123456789

Courier Bold Oblique

ABCDEFGHIJKLMN**OPQRSTUVWXYZ**
abcdefghijklmnopqrstuvwxy 0123456789

Eurostile

ABCDEFGHIJKLMN**OPQRSTUVWXYZ**
 abcdefghijklmnopqrstuvwxy 0123456789

Eurostile Bold

ABCDEFGHIJKLMNOPQRSTUVWXYZ****
abcdefghijklmnopqrstuvwxy 0123456789

Eurostile Bold Extended No.2

ABCDEFGHIJKLMNOPQRSTUVWXYZ****
abcdefghijklmnopqrstuvwxy 0123456789

Eurostile Extended No.2

ABCDEFGHIJKLMN**OPQRSTUVWXYZ**
 abcdefghijklmnopqrstuvwxy 0123456789

Appendix

GillSans

ABCDEFGHIJKLMNOPQRSTUVWXYZ
 abcdefghijklmnopqrstuvwxyz 0123456789

GillSans Italic

ABCDEFGHIJKLMNOPQRSTUVWXYZ
 abcdefghijklmnopqrstuvwxyz 0123456789

GillSans Bold

ABCDEFGHIJKLMNOPQRSTUVWXYZ
abcdefghijklmnopqrstuvwxyz 0123456789

GillSans Bold Italic

ABCDEFGHIJKLMNOPQRSTUVWXYZ
abcdefghijklmnopqrstuvwxyz 0123456789

GillSans Condensed

ABCDEFGHIJKLMNOPQRSTUVWXYZ
 abcdefghijklmnopqrstuvwxyz 0123456789

GillSans Condensed Bold

ABCDEFGHIJKLMNOPQRSTUVWXYZ
abcdefghijklmnopqrstuvwxyz 0123456789

GillSans Light

ABCDEFGHIJKLMNOPQRSTUVWXYZ
 abcdefghijklmnopqrstuvwxyz 0123456789

GillSans Light Italic

ABCDEFGHIJKLMNOPQRSTUVWXYZ
 abcdefghijklmnopqrstuvwxyz 0123456789

GillSans Extra Bold

ABCDEFGHIJKLMNOPQRSTUVWXYZ
abcdefghijklmnopqrstuvwxyz 0123456789

Goudy Oldstyle

ABCDEFGHIJKLMNOPQRSTUVWXYZ
 abcdefghijklmnopqrstuvwxyz 0123456789

Goudy Oldstyle Italic

ABCDEFGHIJKLMNOPQRSTUVWXYZ
 abcdefghijklmnopqrstuvwxyz 0123456789

Goudy Bold

ABCDEFGHIJKLMNOPQRSTUVWXYZ
abcdefghijklmnopqrstuvwxyz 0123456789

Goudy Bold Italic

ABCDEFGHIJKLMNOPQRSTUVWXYZ
abcdefghijklmnopqrstuvwxyz 0123456789

Goudy Extra Bold

ABCDEFGHIJKLMNOPQRSTUVWXYZ
abcdefghijklmnopqrstuvwxyz 0123456789

Helvetica

ABCDEFGHIJKLMNOPQRSTUVWXYZ
 abcdefghijklmnopqrstuvwxyz 0123456789

Helvetica Oblique

ABCDEFGHIJKLMNOPQRSTUVWXYZ
abcdefghijklmnopqrstuvwxyz 0123456789

Helvetica Bold

ABCDEFGHIJKLMNOPQRSTUVWXYZ
abcdefghijklmnopqrstuvwxyz 0123456789

Helvetica Bold Oblique

ABCDEFGHIJKLMNOPQRSTUVWXYZ
abcdefghijklmnopqrstuvwxyz 0123456789

Helvetica Condensed

ABCDEFGHIJKLMNOPQRSTUVWXYZ
 abcdefghijklmnopqrstuvwxyz 0123456789

Helvetica Condensed Oblique

ABCDEFGHIJKLMNOPQRSTUVWXYZ
abcdefghijklmnopqrstuvwxyz 0123456789

Helvetica Condensed Bold

ABCDEFGHIJKLMNOPQRSTUVWXYZ
abcdefghijklmnopqrstuvwxyz 0123456789

Helvetica Condensed Bold Oblique

ABCDEFGHIJKLMNOPQRSTUVWXYZ
abcdefghijklmnopqrstuvwxyz 0123456789

Helvetica Narrow

ABCDEFGHIJKLMNOPQRSTUVWXYZ
 abcdefghijklmnopqrstuvwxyz 0123456789

Helvetica Narrow Oblique

ABCDEFGHIJKLMNOPQRSTUVWXYZ
abcdefghijklmnopqrstuvwxyz 0123456789

Helvetica Narrow Bold

ABCDEFGHIJKLMNOPQRSTUVWXYZ
abcdefghijklmnopqrstuvwxyz 0123456789

Helvetica Narrow Bold Oblique

ABCDEFGHIJKLMNOPQRSTUVWXYZ
abcdefghijklmnopqrstuvwxyz 0123456789

Joanna

ABCDEFGHIJKLMNOPQRSTUVWXYZ
 abcdefghijklmnopqrstuvwxyz 0123456789

Joanna Italic

ABCDEFGHIJKLMNOPQRSTUVWXYZ
abcdefghijklmnopqrstuvwxyz 0123456789

Joanna Bold

ABCDEFGHIJKLMNOPQRSTUVWXYZ
abcdefghijklmnopqrstuvwxyz 0123456789

Joanna Bold Italic

ABCDEFGHIJKLMNOPQRSTUVWXYZ
abcdefghijklmnopqrstuvwxyz 0123456789

Letter Gothic

ABCDEFGHIJKLMNOPQRSTUVWXYZ
 abcdefghijklmnopqrstuvwxyz 0123456789

Letter Gothic Slanted

ABCDEFGHIJKLMNOPQRSTUVWXYZ
abcdefghijklmnopqrstuvwxyz 0123456789

Appendix

Letter Gothic Bold
 ABCDEFGHIJKLMNOPQRSTUVWXYZ
 abcdefghijklmnopqrstuvwxyz 0123456789

Letter Gothic Bold Slanted
 ABCDEFGHIJKLMNOPQRSTUVWXYZ
 abcdefghijklmnopqrstuvwxyz 0123456789

ITC Lubalin Graph Book
 ABCDEFGHIJKLMNOPQRSTUVWXYZ
 abcdefghijklmnopqrstuvwxyz 0123456789

ITC Lubalin Graph Book Oblique
 ABCDEFGHIJKLMNOPQRSTUVWXYZ
 abcdefghijklmnopqrstuvwxyz 0123456789

ITC Lubalin Graph Demi
ABCDEFGHIJKLMNOPQRSTUVWXYZ
abcdefghijklmnopqrstuvwxyz 0123456789

ITC Lubalin Graph Demi Oblique
ABCDEFGHIJKLMNOPQRSTUVWXYZ
abcdefghijklmnopqrstuvwxyz 0123456789

Marigold
 ABCDEFGHIJKLMNOPQRSTUVWXYZ
 abcdefghijklmnopqrstuvwxyz 0123456789

ITC MonaLisa Recut
 ABCDEFGHIJKLMNOPQRSTUVWXYZ
 abcdefghijklmnopqrstuvwxyz 0123456789

NewCentury Schoolbook Roman
 ABCDEFGHIJKLMNOPQRSTUVWXYZ
 abcdefghijklmnopqrstuvwxyz 0123456789

NewCentury Schoolbook Italic
 ABCDEFGHIJKLMNOPQRSTUVWXYZ
 abcdefghijklmnopqrstuvwxyz 0123456789

NewCentury Schoolbook Bold
ABCDEFGHIJKLMNOPQRSTUVWXYZ
abcdefghijklmnopqrstuvwxyz 0123456789

NewCentury Schoolbook Bold Italic
ABCDEFGHIJKLMNOPQRSTUVWXYZ
abcdefghijklmnopqrstuvwxyz 0123456789

Optima
 ABCDEFGHIJKLMNOPQRSTUVWXYZ
 abcdefghijklmnopqrstuvwxyz 0123456789

Optima Italic
 ABCDEFGHIJKLMNOPQRSTUVWXYZ
 abcdefghijklmnopqrstuvwxyz 0123456789

Optima Bold
ABCDEFGHIJKLMNOPQRSTUVWXYZ
abcdefghijklmnopqrstuvwxyz 0123456789

Optima Bold Italic
ABCDEFGHIJKLMNOPQRSTUVWXYZ
abcdefghijklmnopqrstuvwxyz 0123456789

Oxford
 ABCDEFGHIJKLMNOPQRSTUVWXYZ
 abcdefghijklmnopqrstuvwxyz 0123456789

Palatino Roman
 ABCDEFGHIJKLMNOPQRSTUVWXYZ
 abcdefghijklmnopqrstuvwxyz 0123456789

Palatino Italic
 ABCDEFGHIJKLMNOPQRSTUVWXYZ
 abcdefghijklmnopqrstuvwxyz 0123456789

Palatino Bold
ABCDEFGHIJKLMNOPQRSTUVWXYZ
abcdefghijklmnopqrstuvwxyz 0123456789

Palatino Bold Italic
ABCDEFGHIJKLMNOPQRSTUVWXYZ
abcdefghijklmnopqrstuvwxyz 0123456789

Stempel Garamond Roman
 ABCDEFGHIJKLMNOPQRSTUVWXYZ
 abcdefghijklmnopqrstuvwxyz 0123456789

Stempel Garamond Italic
 ABCDEFGHIJKLMNOPQRSTUVWXYZ
 abcdefghijklmnopqrstuvwxyz 0123456789

Stempel Garamond Bold
ABCDEFGHIJKLMNOPQRSTUVWXYZ
abcdefghijklmnopqrstuvwxyz 0123456789

Stempel Garamond Bold Italic
ABCDEFGHIJKLMNOPQRSTUVWXYZ
abcdefghijklmnopqrstuvwxyz 0123456789

Symbol
 ABXΔEΦΓHIθKAMNOΠIΘPΣTYζΩΞΨZ
 αβχδεφγηηικλμνοπρθστυωξψζ 0123456789

Tekton
 ABCDEFGHIJKLMNOPQRSTUVWXYZ
 abcdefghijklmnopqrstuvwxyz 0123456789

Times Roman
 ABCDEFGHIJKLMNOPQRSTUVWXYZ
 abcdefghijklmnopqrstuvwxyz 0123456789

Times Italic
 ABCDEFGHIJKLMNOPQRSTUVWXYZ
 abcdefghijklmnopqrstuvwxyz 0123456789

Times Bold
ABCDEFGHIJKLMNOPQRSTUVWXYZ
abcdefghijklmnopqrstuvwxyz 0123456789

Times Bold Italic
ABCDEFGHIJKLMNOPQRSTUVWXYZ
abcdefghijklmnopqrstuvwxyz 0123456789

Univers55
 ABCDEFGHIJKLMNOPQRSTUVWXYZ
 abcdefghijklmnopqrstuvwxyz 0123456789

Appendix

Univers55 Oblique

ABCDEFGHIJKLMN**OPQRSTUVWXYZ**
abcdefghijklmnopqrstu**vwxyz** 0123456789

Univers 65 Bold

ABCDEFGHIJKLMN**OPQRSTUVWXYZ**
abcdefghijklmnopqrstu**vwxyz** 0123456789

Univers65 Bold Oblique

ABCDEFGHIJKLMN**OPQRSTUVWXYZ**
abcdefghijklmnopqrstu**vwxyz** 0123456789

Univers45 Light

ABCDEFGHIJKLMN**OPQRSTUVWXYZ**
abcdefghijklmnopqrstu**vwxyz** 0123456789

Univers45 Light Oblique

ABCDEFGHIJKLMN**OPQRSTUVWXYZ**
abcdefghijklmnopqrstu**vwxyz** 0123456789

Univers57 Condensed

ABCDEFGHIJKLMN**OPQRSTUVWXYZ**
abcdefghijklmnopqrstu**vwxyz** 0123456789

Univers 57 Condensed Oblique

ABCDEFGHIJKLMN**OPQRSTUVWXYZ**
abcdefghijklmnopqrstu**vwxyz** 0123456789

Univers67 Condensed Bold

ABCDEFGHIJKLMN**OPQRSTUVWXYZ**
abcdefghijklmnopqrstu**vwxyz** 0123456789

Univers67 Condensed Bold Oblique

ABCDEFGHIJKLMN**OPQRSTUVWXYZ**
abcdefghijklmnopqrstu**vwxyz** 0123456789

Univers53 Extended

ABCDEFGHIJKLMN**OPQRSTUVWXYZ**
abcdefghijklmnopqrstu**vwxyz** 0123456789

Univers53 Extended Oblique

ABCDEFGHIJKLMN**OPQRSTUVWXYZ**
abcdefghijklmnopqrstu**vwxyz** 0123456789

Univers63 Bold Extended

ABCDEFGHIJKLMN**OPQRSTUVWXYZ**
abcdefghijklmnopqrstu**vwxyz** 0123456789

Univers63 Bold Extended Oblique

ABCDEFGHIJKLMN**OPQRSTUVWXYZ**
abcdefghijklmnopqrstu**vwxyz** 0123456789

ITC Zapf Chancery Medium Italic

ABCDEFGHIJKLMN**OPQRSTUVWXYZ**
abcdefghijklmnopqrstu**vwxyz** 0123456789

ITC Zapf Dingbats

⠆⠇⠈⠉⠊⠋⠌⠍⠎⠏⠑⠒⠓⠔⠕⠖⠗⠘⠙⠚⠛⠜⠝⠞⠟⠠⠡⠢⠣⠤⠥⠦⠧⠨⠩⠪⠫⠬⠭⠮⠯⠰⠱⠲⠳⠴⠵⠶⠷⠸⠹⠺⠻⠼⠽⠾⠿⠁⠂⠃⠄⠅⠆⠇⠈⠉⠊⠋⠌⠍⠎⠏⠑⠒⠓⠔⠕⠖⠗⠘⠙⠚⠛⠜⠝⠞⠟⠠⠡⠢⠣⠤⠥⠦⠧⠨⠩⠪⠫⠬⠭⠮⠯⠰⠱⠲⠳⠴⠵⠶⠷⠸⠹⠺⠻⠼⠽⠾⠿

TrueType Fonts

Apple Chancery

ABCDEFGHIJKLMN**OPQRSTUVWXYZ**
abcdefghijklmnopqrstu**vwxyz** 0123456789

Arial

ABCDEFGHIJKLMN**OPQRSTUVWXYZ**
abcdefghijklmnopqrstu**vwxyz** 0123456789

Arial Italic

ABCDEFGHIJKLMN**OPQRSTUVWXYZ**
abcdefghijklmnopqrstu**vwxyz** 0123456789

Arial Bold

ABCDEFGHIJKLMN**OPQRSTUVWXYZ**
abcdefghijklmnopqrstu**vwxyz** 0123456789

Arial Bold Italic

ABCDEFGHIJKLMN**OPQRSTUVWXYZ**
abcdefghijklmnopqrstu**vwxyz** 0123456789

Chicago

ABCDEFGHIJKLMN**OPQRSTUVWXYZ**
abcdefghijklmnopqrstu**vwxyz** 0123456789

Geneva

ABCDEFGHIJKLMN**OPQRSTUVWXYZ**
abcdefghijklmnopqrstu**vwxyz** 0123456789

Hoefler Text

ABCDEFGHIJKLMN**OPQRSTUVWXYZ**
abcdefghijklmnopqrstu**vwxyz** 0123456789

Hoefler Text Italic

ABCDEFGHIJKLMN**OPQRSTUVWXYZ**
abcdefghijklmnopqrstu**vwxyz** 0123456789

Hoefler Text Black

ABCDEFGHIJKLMN**OPQRSTUVWXYZ**
abcdefghijklmnopqrstu**vwxyz** 0123456789

Hoefler Text Black Italic

ABCDEFGHIJKLMN**OPQRSTUVWXYZ**
abcdefghijklmnopqrstu**vwxyz** 0123456789

Hoefler Ornaments



Monaco

ABCDEFGHIJKLMN**OPQRSTUVWXYZ**
abcdefghijklmnopqrstu**vwxyz** 0123456789

New York

ABCDEFGHIJKLMN**OPQRSTUVWXYZ**
abcdefghijklmnopqrstu**vwxyz** 0123456789

Appendix

Times New Roman
ABCDEFGHIJKLMNOPQRSTUVWXYZ
abcdefghijklmnopqrstuvwxyz 0123456789

Times New Roman Italic
ABCDEFGHIJKLMNOPQRSTUVWXYZ
abcdefghijklmnopqrstuvwxyz 0123456789

Times New Roman Bold
ABCDEFGHIJKLMNOPQRSTUVWXYZ
abcdefghijklmnopqrstuvwxyz 0123456789

Times New Roman Bold Italic
ABCDEFGHIJKLMNOPQRSTUVWXYZ
abcdefghijklmnopqrstuvwxyz 0123456789

Wingdings
@#&'()*+,-./:;<=>?[]^_`{|}~¡¢£¥¦§¨ª«¬®¯°±²³´µ¶·¸¹º»¼½¾¿
À Á Â Ã Ä Å Æ Ç È É Ê Ë Ì Í Î Ï Ñ Ò Ó Ô Õ Ö × Ø Ù Ú Û Ü Ý Þ ß à á â ã

Software License Terms

Open Source Software Licenses

OPEN SOURCE SOFTWARE LICENSE

- 1) This printer product includes open source software programs listed in Section 5) according to the license terms of each open source software program.
- 2) We provide the source code of the GPL Programs, LGPL Programs (each is defined in Section 5) until five (5) years after the discontinuation of same model of this printer product. If you desire to receive the source code above, please see the "Contacting Epson Support" in the User's Guide, and contact the customer support of your region. You shall comply with the license terms of each open source software program.
- 3) The open source software programs are WITHOUT ANY WARRANTY; without even the implied warranty of MERCHANTABILITY AND FITNESS FOR A PARTICULAR PURPOSE. See the license agreements of each open source software program for more details, which are described on \Manual\data\OSS.pdf in the Printer Software Disc.
- 4) The license terms of each open source software program are described on \Manual\data\OSS.pdf in the Printer Software Disc.
- 5) The list of open source software programs which this printer product includes are as follows.

GNU GPL

This printer product includes the open source software programs which apply the GNU General Public License Version 2 or later version ("GPL Programs").

The list of GPL Programs:

u-boot-2011.12-axp
linux-3.2.40-axp
busybox-1.18.4
lzo-2.06
mtd-utils-1.4.4
scrub-2.4
smartmontools-5.40

GNU Lesser GPL

This printer product includes the open source software programs "libusb-1.0.8" which apply the GNU Lesser General Public License Version 2 or later version ("Lesser GPL Programs").

BSD License (Berkeley Software Distribution License)

This printer product includes the open source software program "busybox-1.18.4" which apply the Berkeley Software Distribution License ("BSD Program").

Sun RPC License

This printer product includes the open source software program "busybox-1.18.4" which apply the Sun RPC License ("Sun RPC Program").