

Enjoy your media content directly on TV via HDMI with HD Station

The award-winning Turbo NAS brings you an all-new home theater experience! The NAS series provides the ability to back up all of your digital photos, music, and videos, while supporting playing a variety of video formats. Using the HD Station on the high-definition HDMI TV or projector, you can easily turn the NAS into a powerful digital media player. The exclusive TV Portal feature now allows you the freedom to choose how to play back your videos.

What is HD Station?

The HD Station is a platform where the famous XBMC application or Chrome browser can be installed to let you directly play back your NAS multimedia contents or browse the internet websites on the TV screen thru the HDMI interface.

Create your lovely media environment by following the steps below:

1. Set up the environment of the HD Station: Connect the NAS to the HDMI TV with a HDMI cable



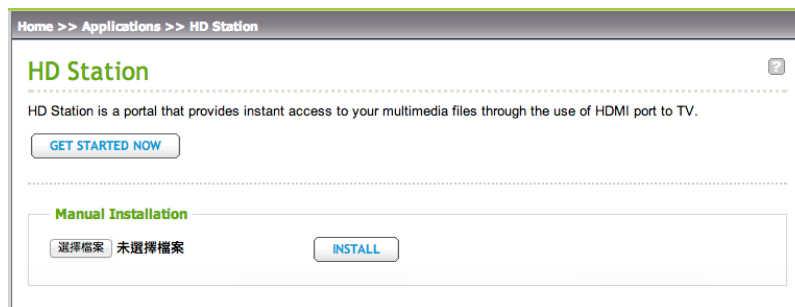
Remote controller: There are 4 different ways to control the HD Station.

- I. QNAP remote controller
- II. MCE remote controller
- III. USB keyboard or mouse
- IV. Qremote: QNAP remote app, exclusively designed for the HD Station.

Note: If you want to use the Chrome to browse an internet website, you are required to use the mouse function on the Qremote or use the USB mouse directly connected to the NAS.

2. Install the HD Station:

Go to “Applications” > “HD Station” and click the “Get Started Now” button. Then, the system will install the HD Station automatically.

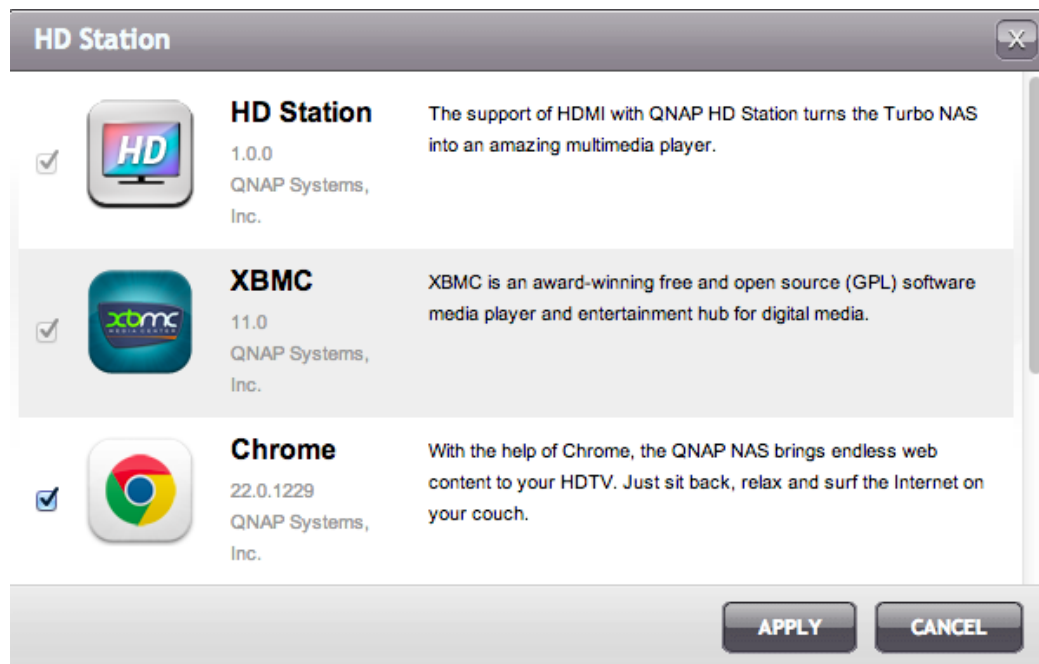


Choose the applications to install.

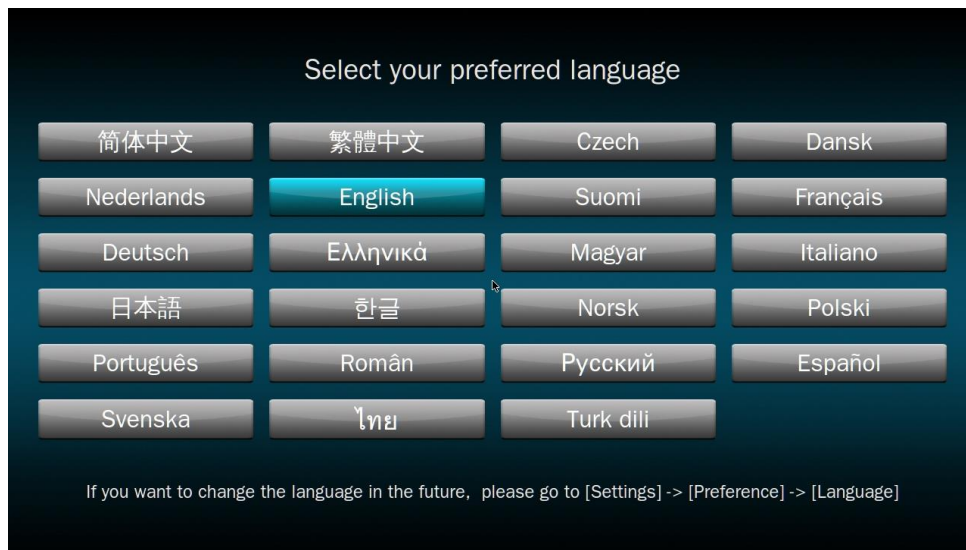
HD Station: The HD Station portal, which allows you to use the following applications on the TV screen.

- ✧ XBMC: An application for you to operate and enjoy your multimedia data on the TV screen.
- ✧ Chrome: With the help of Chrome, the QNAP Turbo NAS brings endless web content to your HDTV. Just sit back, relax, and surf the internet on your couch.
- ✧ YouTube: Simply browse and click to enjoy millions of YouTube videos on your TV.
- ✧ MyNAS: An application for you to enter the local NAS administration web page to view the NAS functions and settings.

Note:



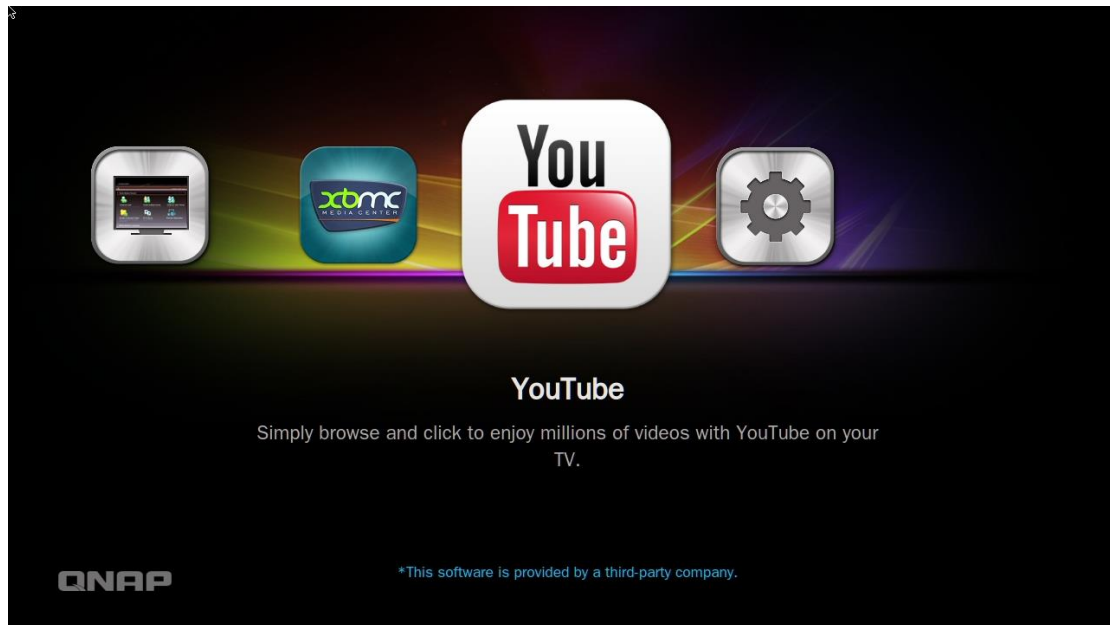
After installation, you need to choose your preferred language on the TV screen.



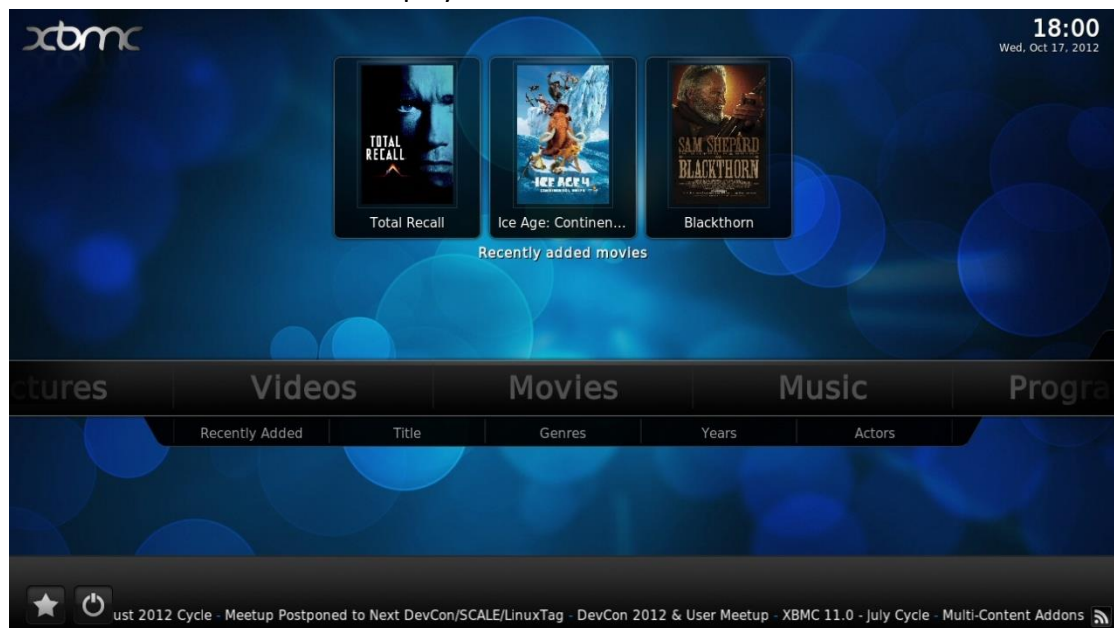
After selecting the language, you will see the HD Station portal as shown below.



3. Start using the HD Station: At the HD Station portal, simply choose the application you want to use to start enjoying the service.



XBMC: Enjoy the comfort of your living room and play movies, photos, and music directly on your TV. Powered by XBMC, the QNAP Turbo NAS now becomes a home entertainment hub and media player as well!



Tips:

I. How to take a picture with your smart phone and watch on your TV?

A:

The first part is done by the Qfile on your phone:

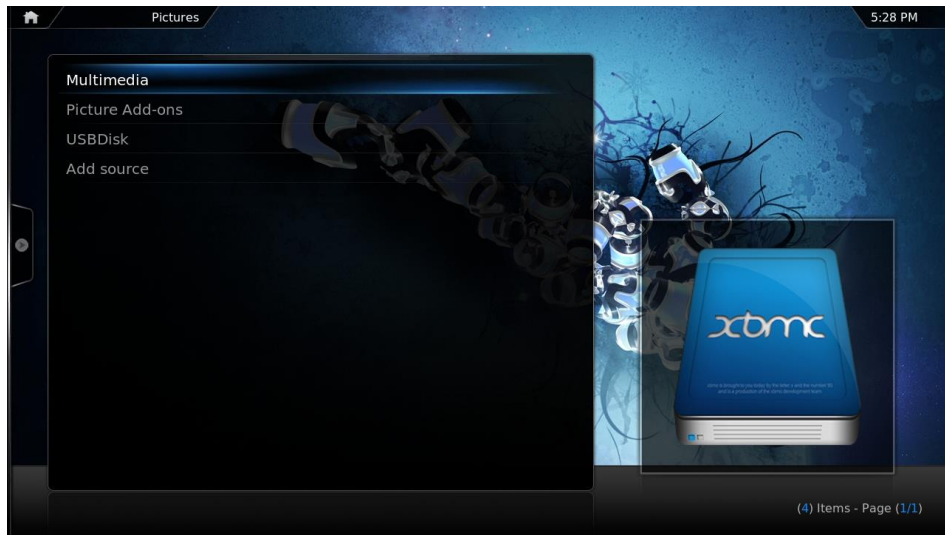
- a. Use the Qfile to browse your NAS
- b. Choose the multimedia shared folder
- c. Select the upload function
- d. Take a picture and upload it to the NAS

The second part is performed by the HD Station on your TV:

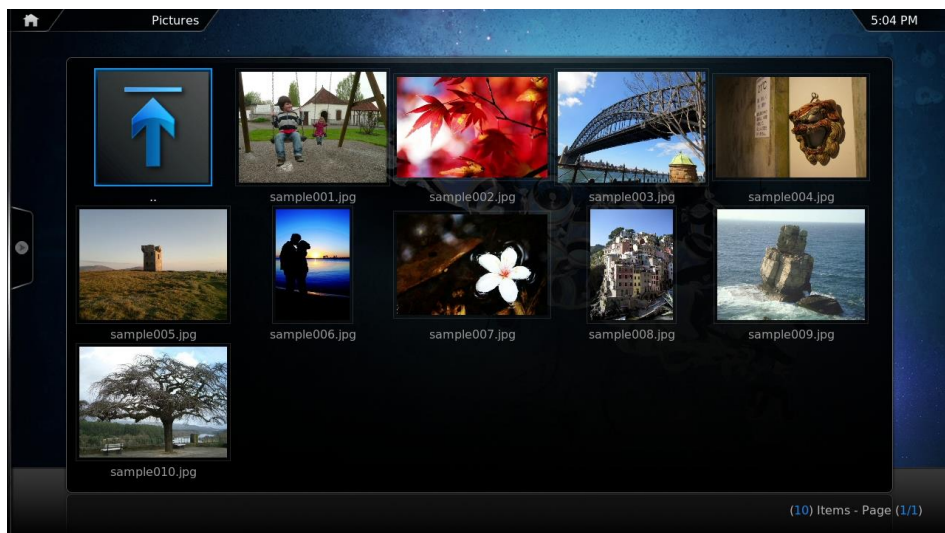
- e. Turn on your TV and choose XBMC
- f. Choose "Pictures" like below:



g. Select the "Multimedia" folder

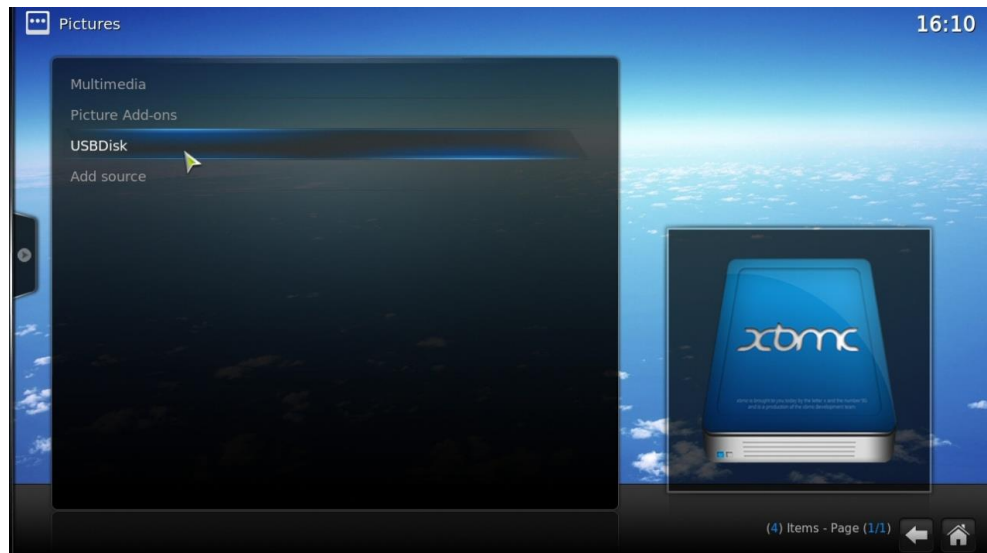


h. Double click the picture you just uploaded

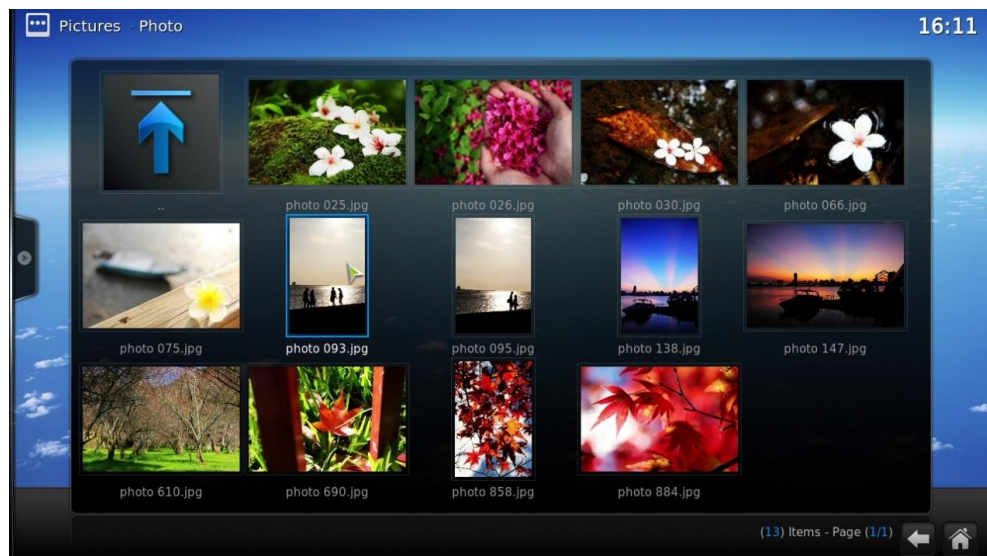


II. How to view the photos on your USB device or camera?

- a. Connect your USB device or camera to the USB port of your NAS
- b. Choose "Pictures"
- c. Choose "USBDisk"



- d. Select the photo you want to view

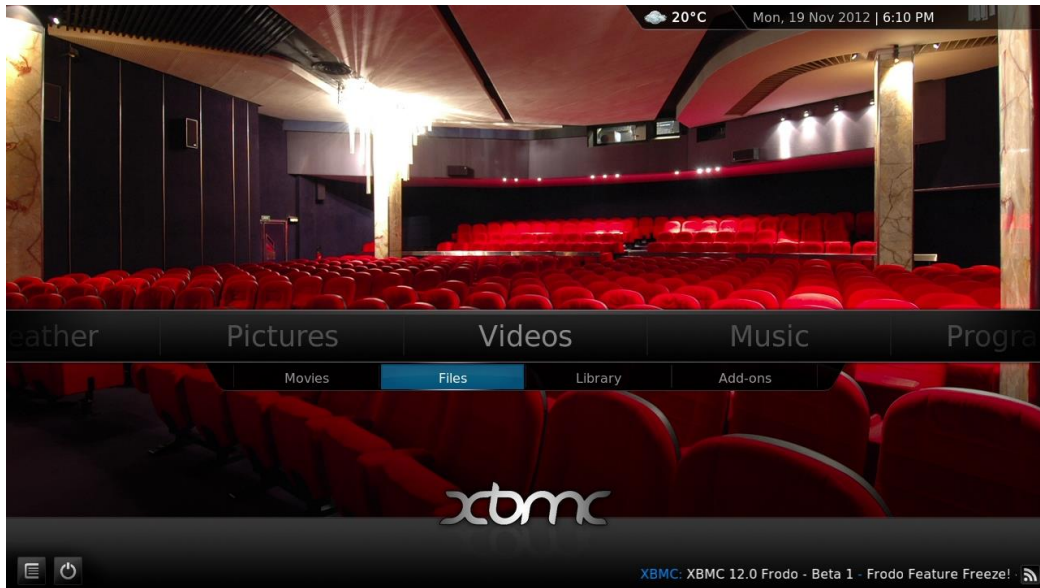


III. How to import the media contents to your NAS?

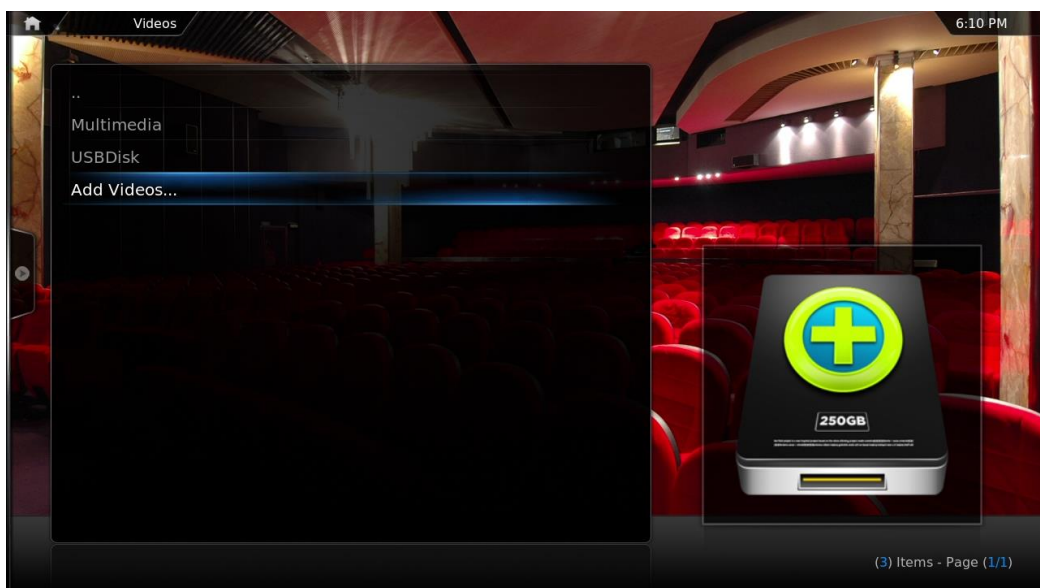
Import the contents: By default, you may import the media contents to the HD Station, and simply save the files in the "Multimedia" or "Qmultimedia" shared folder by several types of network protocols (Samba, AFP, FTP, and NFS), or copy them from an external USB or eSATA device (if any).

Tips: If you want to browse the media contents in different folders other than the default "Multimedia" shared folder, you can perform the following steps:

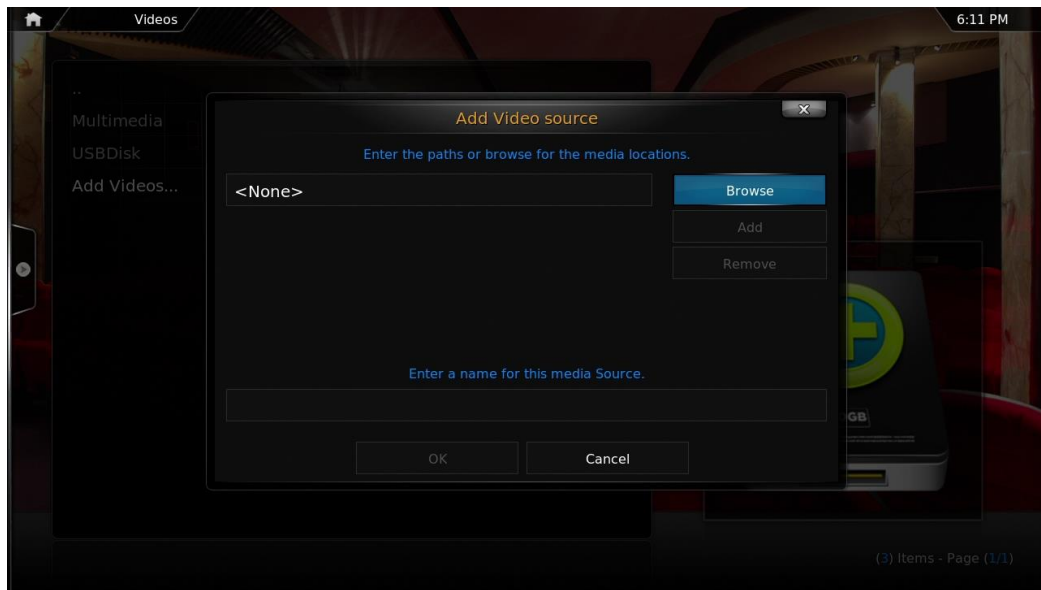
- i. Choose "Files" under "Videos"



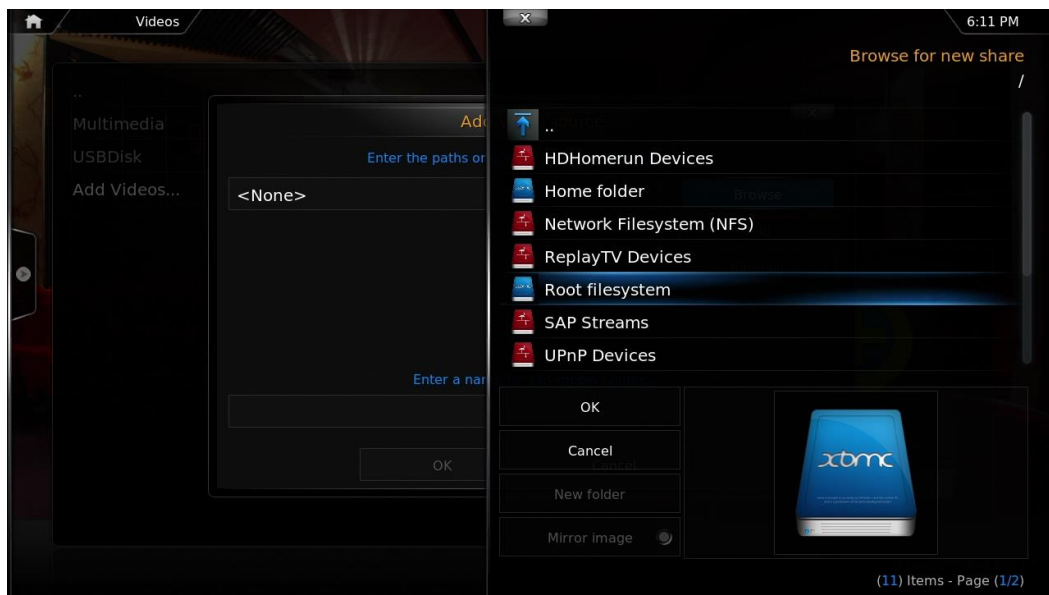
- ii. Choose "Add Videos"



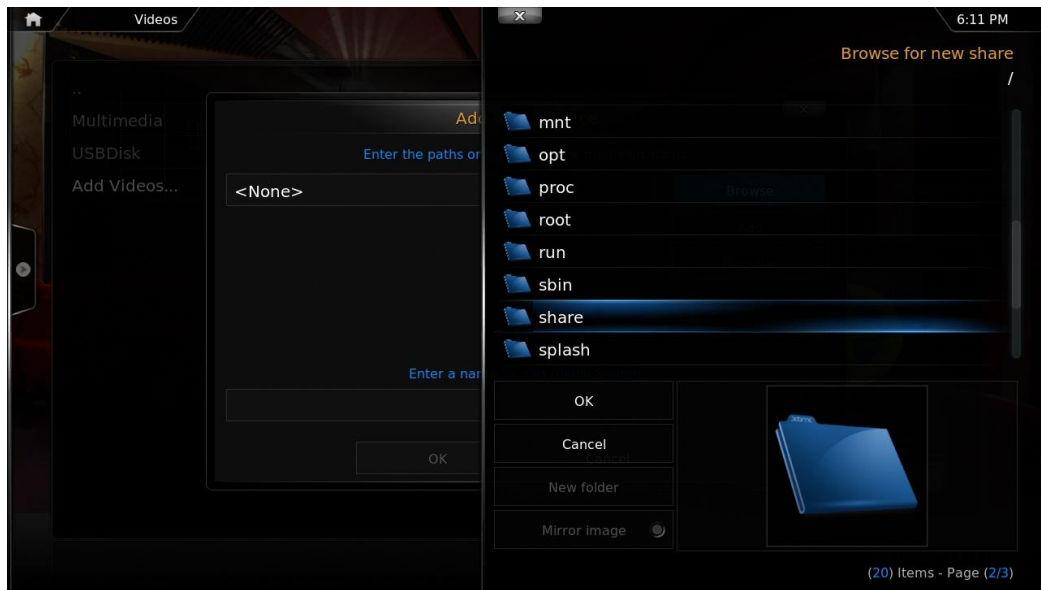
iii. Click "Browse"



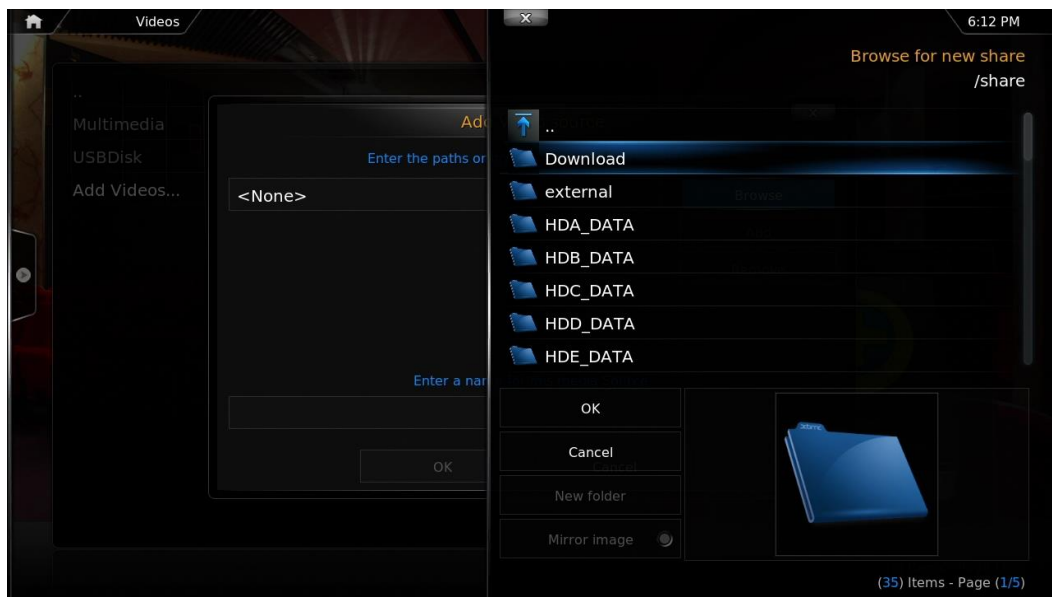
iv. Choose "Root filesystem"



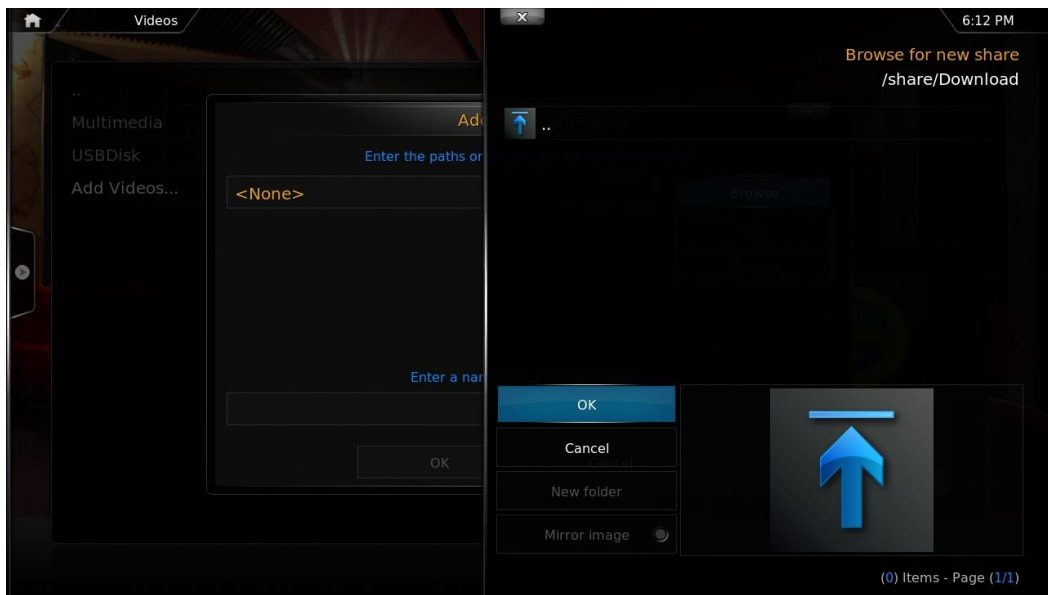
- v. Choose "share":



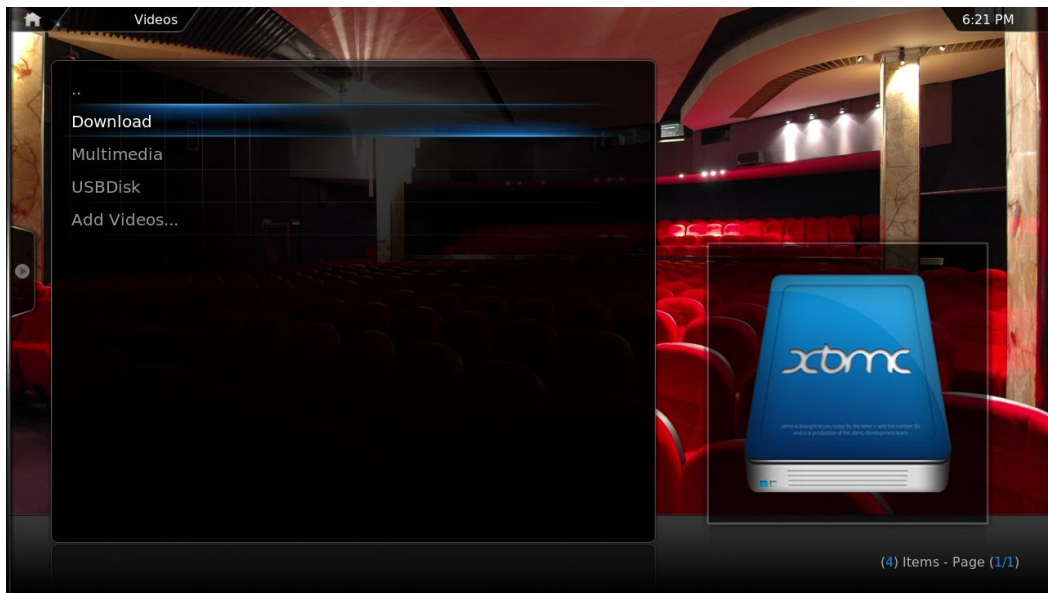
- vi. If you want to add the "Download" shared folder, for example, choose "Download" like below. Otherwise, just choose the shared folder you would like to add as a video source.



vii. Click "OK" to add this source.

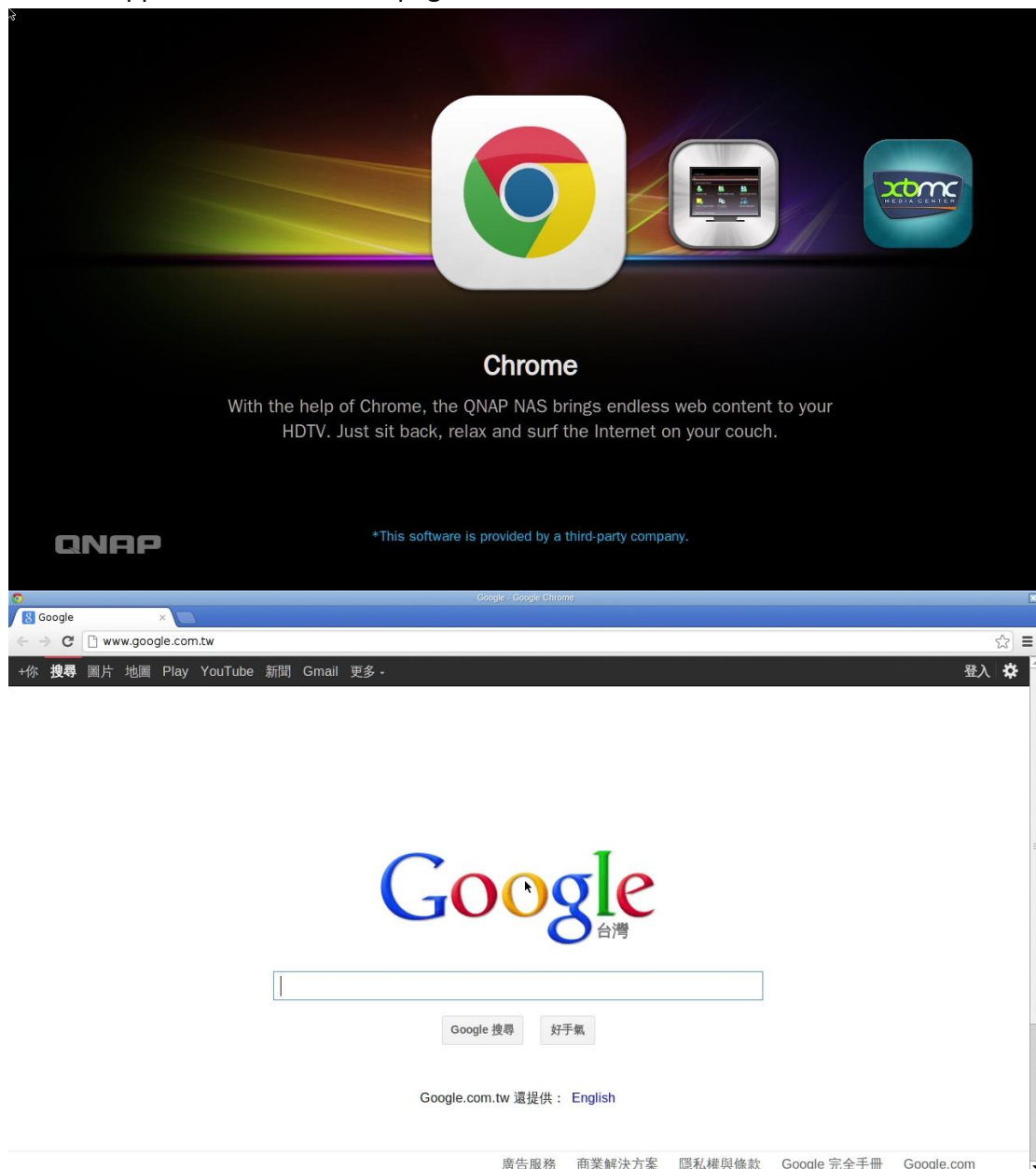


viii. You will see the "Download" shared folder in the list.



- IV. If you have the video playback quality issue on some video format, you may enable the following setting on XBMC. Go to [Setting] -> [Video] -> [Playback], then enable "Adjust display refresh rate to match video" and "Sync playback to display".

Chrome: With the help of Chrome, the QNAP Turbo NAS brings endless web content to your HDTV. Just sit back, relax, and surf the internet on your couch. Select the Chrome application at the main page of the HD Station like below:



Note: In order to use this application, you are required to use the mouse function on the Qremote, or use the USB mouse directly connected to the NAS.



In order to use this function, please connect a USB mouse to the NAS or use Qremote app. Are you sure you want to use this function?

Don't show this message again.

Yes

No

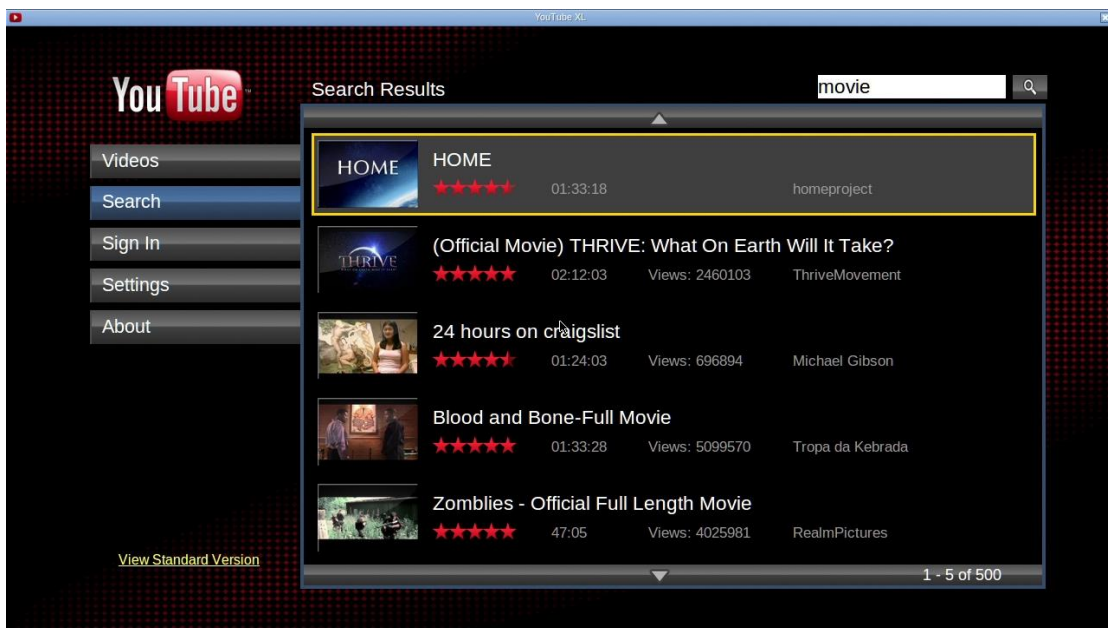
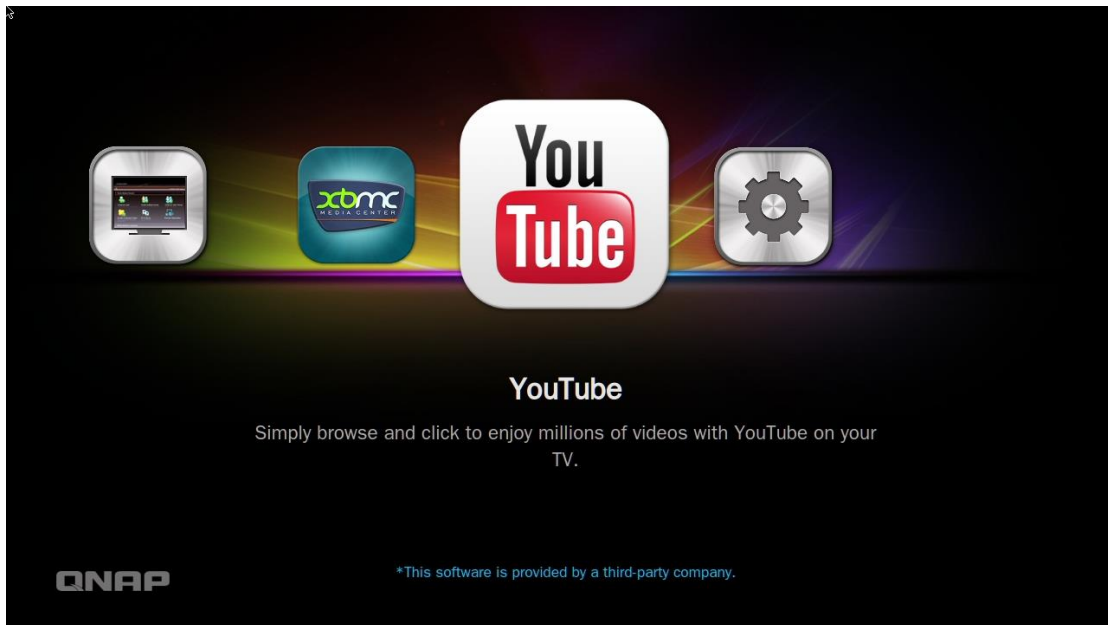
With t

to your

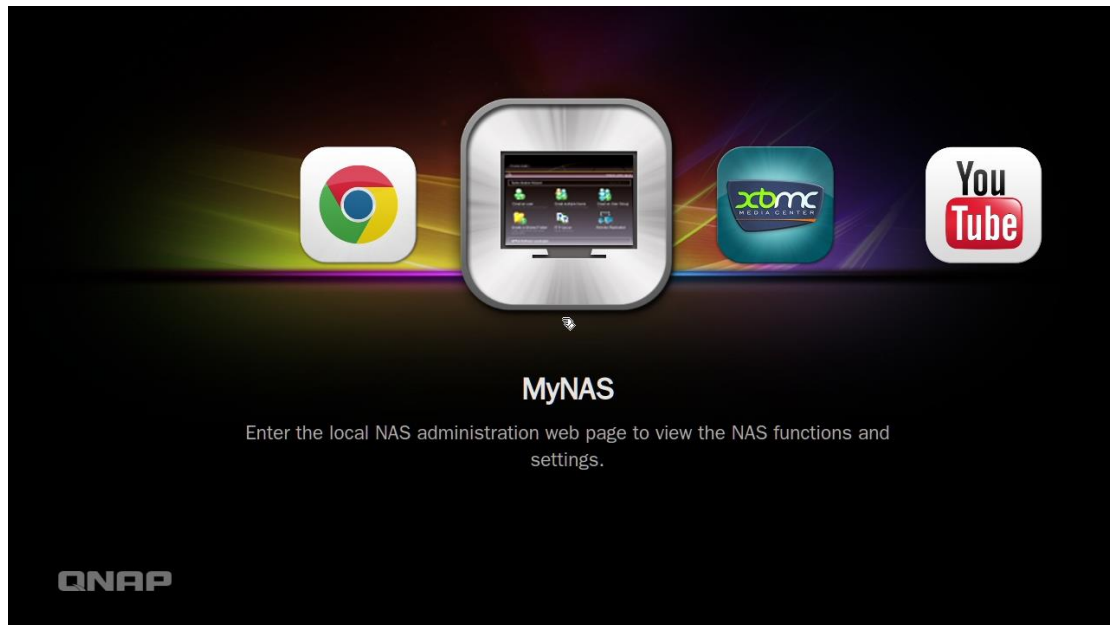
QNAP

*This software is provided by a third-party company.

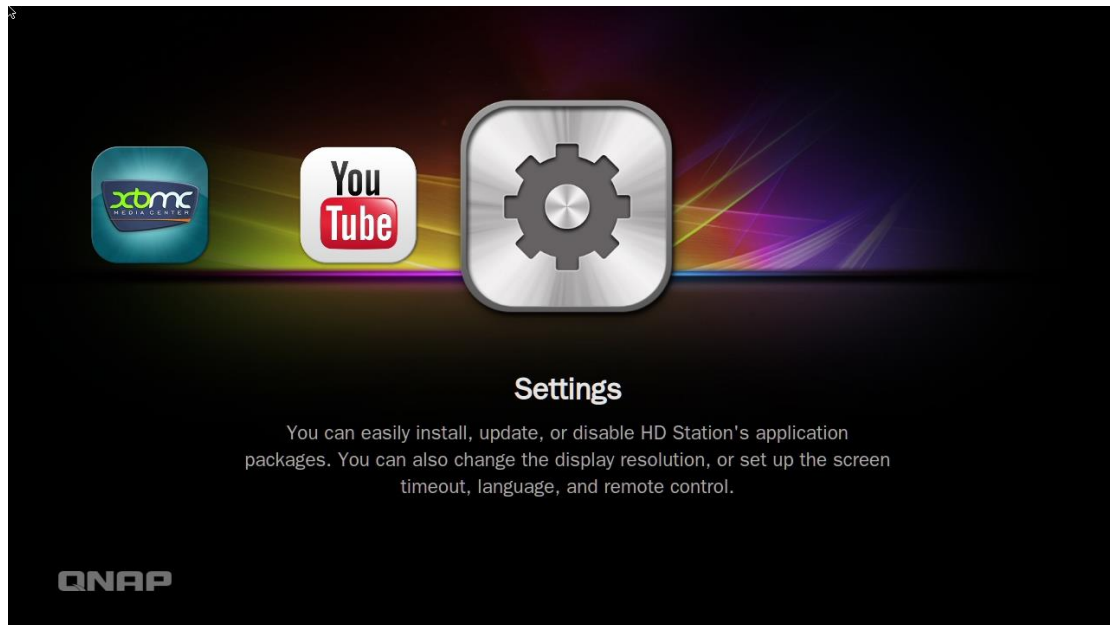
YouTube: Simply browse and click to enjoy millions of YouTube videos on your TV. Select the YouTube application and start enjoying the YouTube contents.



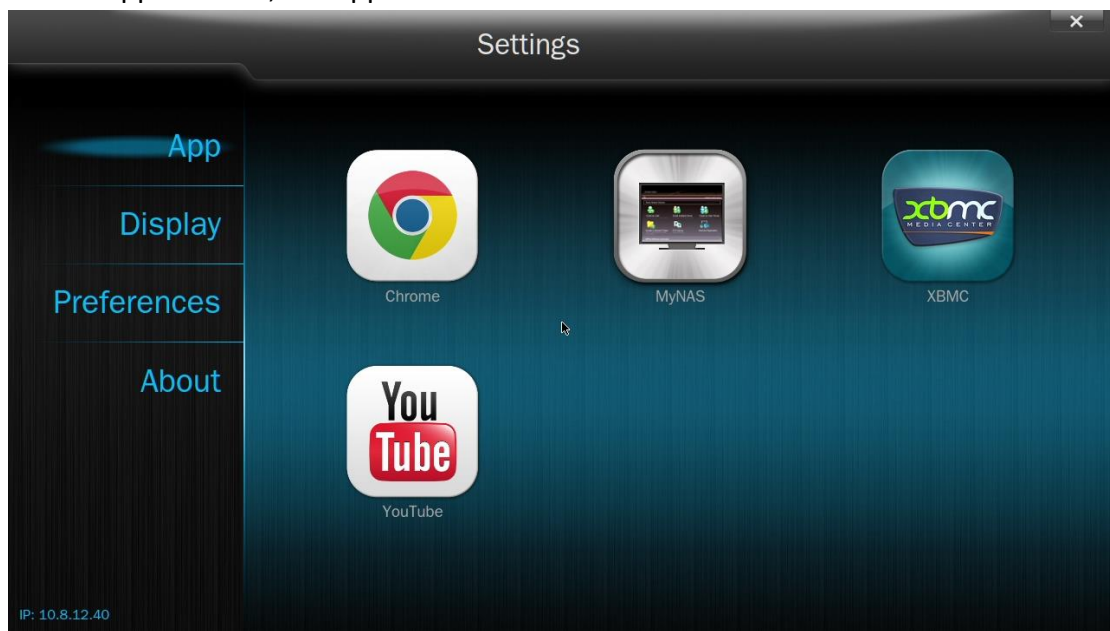
MyNAS: Enter the local NAS administration web page to view the NAS functions and settings.



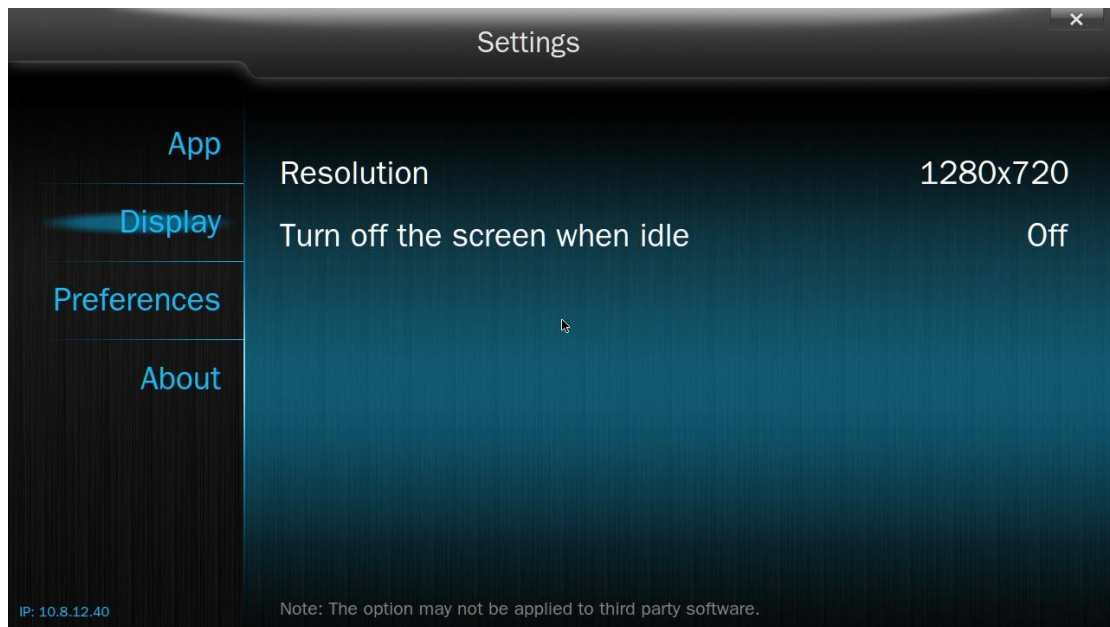
Configure the settings of the HD Station: You may configure the HD Station by choosing "Settings" at the HD Station portal.



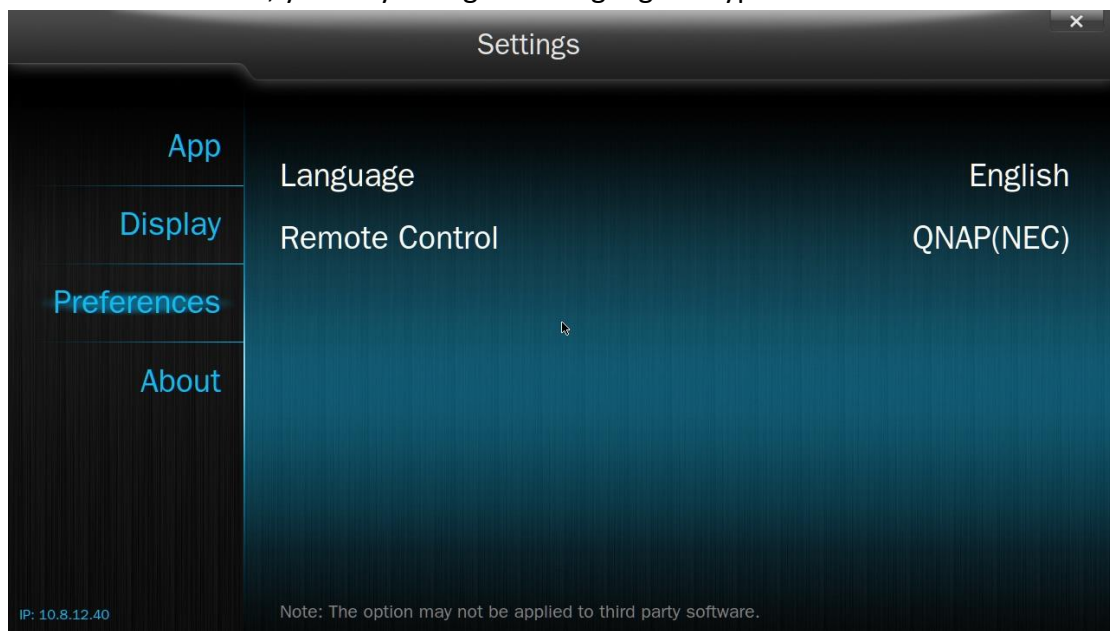
In the "App" feature, the applications can be enabled or disabled.



In the “Display”, you may change the screen resolution and set up to turn off the screen after an amount of idle time.



In the “Preferences”, you may change the language or type of remote control.



Note: Only the QNAP remote or MCE remote control is supported. NOT all the x69 NAS support the internal remote.