

V-Power

GH-UDUP21-VC

Installation Guide



Caution

The following are not covered by the warranty :

1. Incorrect use or use of the product for any purpose other than its intended use.
2. Nonobservance of the proper operation provided. (e.g. over-clocking)
3. Malfunction due to interference from other devices.
4. Fail to install due to the specification of the VGA card or other components that are not supported by the product.
5. Unauthorized modification of the product.
6. Malfunction arising from casualties (earthquake, thunder, fire, and flood).
7. The warranty label of the product has been removed or damaged.
8. Any loss due to the removing of the original heat sink on the VGA card.
9. Any loss caused by failure to follow the installation process contained in the user manual.

Features

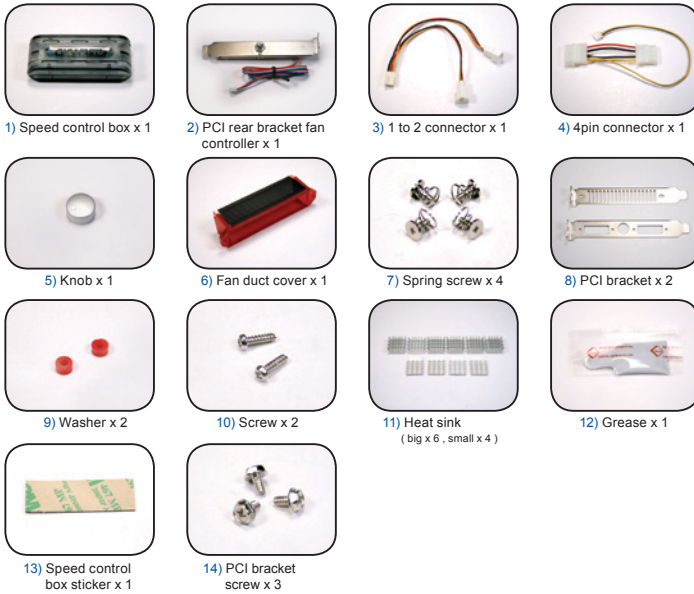
1. Support nVIDIA SLI and ATI CrossFire
2. Universal design supports various high performance VGA cards with easy installation
3. Four heat pipes and large fin design enhance the heat conduction
4. Better airflow and low noise working environment
5. Fan speed controller fits various needs.
6. Delicate white light LED
7. 90x90x25 mm fan and exquisite design base provide the thermal circulation for surrounding components.
8. Ball bearing fan extends cooler expectancy
9. Heat sink for memory is included

Specification

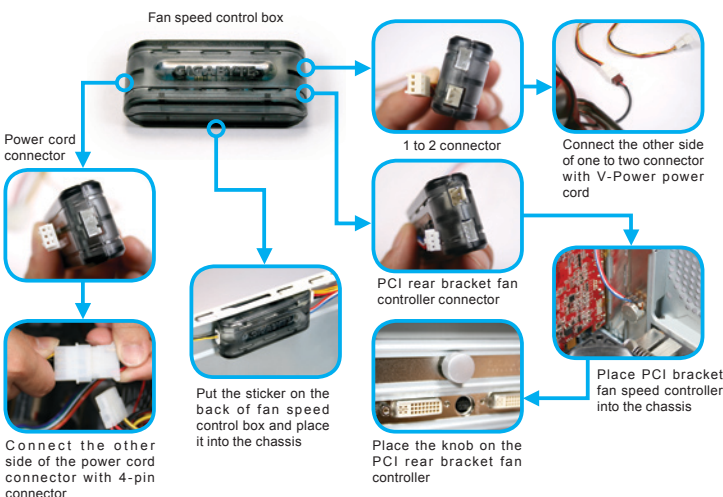
Heat Sink Dimension : 186 x 105 x 34 mm
 Fan Dimension : 90 x 90 x 25 mm
 Base material : Copper
 Fin material : Aluminum
 Rated Voltage : 12 V
 Rated Current : 0.38 Amp
 Fan Speed : 0 ~ 2,000 rpm
 Noise : 0 ~ 25 dBA
 Bearing Type : Ball bearing

Fan Life Expectancy : 40,000 hr
 Support :
 nVIDIA GeForce 6800 series
 nVIDIA GeForce 7800 series
 nVIDIA GeForce 7900 series
 ATI RADEON X1800 series
 ATI RADEON X1900 series
 ATI RADEON X1950 series

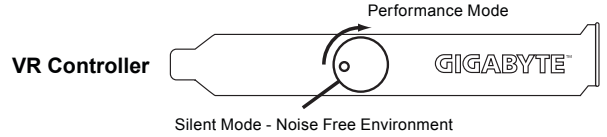
Accessories



Speed control box accessories installation Guide

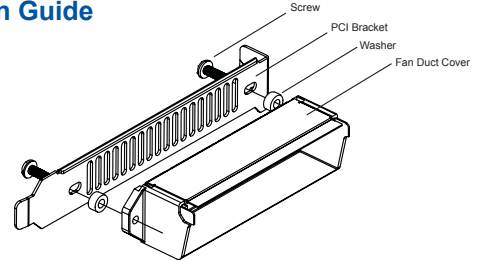


PCI rear bracket fan speed controller user introduction



Controllable fan speed for different system working environment. Turn the controller anti-clockwise to stop fan running. Turn clockwise to adjust the fan speed from 0 rpm to 2,000 rpm.

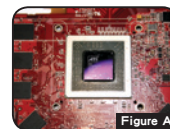
Accessories Installation Guide



VGA Model	PCI Bracket	Screw	Washer	Fan Duct Cover
ATI RADEON X1800 series	○	○	X	○
ATI RADEON X1900 series	○	○	○	○
ATI RADEON X1950 series	○	○	○	○
nVIDIA GeForce 6800 series	○	○	X	○
nVIDIA GeForce 7800 series	○	○	X	○
nVIDIA GeForce 7900 series	○	X	X	X

Installation Instruction

STEP 1

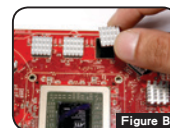


Remove the original cooler on the VGA card and clean the grease. (as Figure A)

NOTE Remove heat sinks on the memories if any.

Caution : Please be careful while removing the original heat sink on the VGA card. GIGABYTE is not responsible to any loss caused during the removal process.

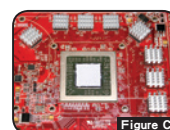
STEP 2



According to the number of the memories on the VGA card, to remove the sticker on the back of the heat sinks and paste on the memories. (as Figure B)

NOTE With the limited space on the top of the VGA card, please paste on smaller heat sinks.

STEP 3



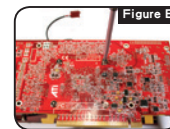
Apply the grease on the VGA chip appropriately. (as Figure C)

STEP 4



Tear off the sticker on the copper base. (as Figure D)

STEP 5



Place the cooler on the table and align the holes for the screws on the VGA card to the screws on the cooler and use the screw driver to lock the VGA cooler with spring screws. (as Figure E)

NOTE To avoid the damage on the chip, please lock the nuts diagonally.

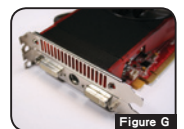
STEP 6



Place the fan duct cover on the PCI rear panel with screw driver and screws. (as Figure F)

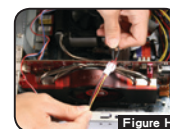
NOTE Please refer to Accessories Installation Guide.

STEP 7



Slide the fan duct front cover to the cooler. (as Figure G)

STEP 8



Place the VGA card with V-Power into the system and connect the power cord of the fan with the available 1 to 2 connector from the speed control box. (as Figure H)

NOTE For ATI Crossfire or nVIDIA SLI, please connect the power cord of each fan with the 1 to 2 connector from the speed control box dividely.