

User's Manual



M7700B Compact Bluetooth® Laptop Laser Mouse



All specifications and figures are subject to change without notice.
All trademarks and logos are the properties of their respective holders.

Step b

English: Insert battery properly (please refer Part 1) make sure that mouse is in power on status. Push ID Button to enter connecting status, and low power LED will be flashing slowly.
Français: Insérer la batterie correctement (veuillez vous référer la partie 1) assurez vous que la souris est sur le statut allumé. Poussez le bouton ID pour entrer le statut de connexion, et la LED de faible puissance clignotera lentement.

Español: Insertar batería correctamente (como presentación en Parte 1). Asegurar el ratón está con energía. Pulsar el ID botón para entrar el estado de conexión, y el LED indicador de bajo energía comenzará relampaguear lentamente.

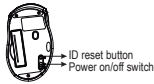
Português: Insira a bateria correctamente (consulte a Parte 1) e certifique-se de que o rato está no estado ligado. Prima Botão ID para entrar o estado de ligação, e o LED de energia baixa irá piscar lentamente.

Deutsch: Legen Sie die Batterien ein (siehe Teil 1) und stellen Sie sicher, dass die Maus eingeschaltet ist. Drücken Sie die ID Taste, um den Verbindungsstatus anzuzeigen. Die LED Batterieleuchte wird langsam blinken.

Русский: Установите батарею (см. часть 1). Убедитесь, что мышь включена. Нажмите кнопку ID, чтобы войти в состояние подключения. Светодиодный индикатор пониженного энергопотребления медленно мигает.

Türkçe: Piliinizi uygun şekilde takın (Bölüm 1) ve mouse'un açık konuma getirin. ID butonuna basarak bağlantı durumunu aktif edin.

中文: 將電池放入您的滑鼠內(請參閱Part 1) 並且確認滑鼠電源是開啟的。按下無線ID連結按鈕



Step c

English: Click "Bluetooth icon" to open "Bluetooth device" in control panel or toolbar.

Français: Cliquez "Bluetooth icône" pour ouvrir "Dispositif Bluetooth" dans le Panneau de commande ou barre d'outils.

Español: Pinchar en "Bluetooth icono" para abrir "Bluetooth Aparato" en panel de control o barra de herramienta.

Português: Clique "ícone Bluetooth" para abrir "Dispositivo Bluetooth" no painel de controlo ou a barra de ferramentas.

Deutsch: Klicken Sie auf das "Bluetooth Symbol", um "Bluetooth-Geräte" in der Systemsteuerung oder der Symbolleiste zu öffnen.

Русский: Щелкните по значку «Значок Bluetooth», чтобы открыть окно «Устройство Bluetooth» на панели управления или панели инструментов.

Türkçe: "Bluetooth simgesi"ni tıklayın ve "control panel" içindeki

"Bluetooth device" için "Bluetooth" veya "Arayıcı" simgesini tıklayarak Bluetooth cihazı açın.

中文: 在「控制台」或「工具列」中點選「藍牙圖示」開啟藍牙裝置

Step d

English: Click "add".

Français: Cliquez "ajouter".

Español: Pinchar "añadir".

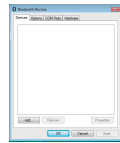
Português: Clique "adicionar".

Deutsch: Klicken Sie auf "Hinzufügen".

Русский: Нажмите кнопку «Добавить».

Türkçe: "Add" butonunu tıklayın.

中文: 點選「新增」



Step e

English: Please tick "My device is set up and ready to be found" and click "Next".

Français: Veuillez cocher "Mon dispositif est installé et prêt à être trouvé" et cliquez "Suivant".

Español: Marcar "Mi aparato es instalado y listo para descubrir" y pinchar "Siguiente".

Português: Marque "Meu dispositivo está definido e pronto para ser encontrado" e clique "Seguinte".

Deutsch: Bitte machen Sie einen Haken bei "Gerät ist eingerichtet und kann erkannt werden" und klicken auf "Weiter".

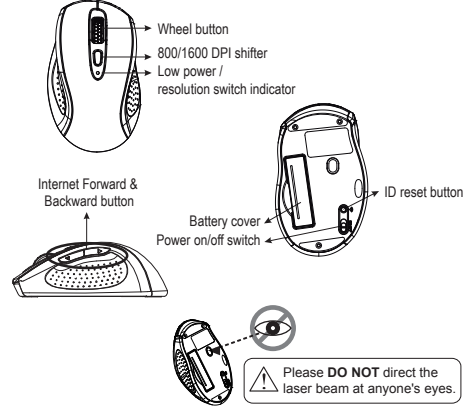
Русский: Поставьте галочку возле пункта «Устройство настроено и готово к обнаружению» и нажмите кнопку «Далее».

Türkçe: Lütfen "My device is set up and ready to found" kutucuğunu tıklayın ve "Next" butonuna basın.



Introduction

Mouse



Please **DO NOT** direct the laser beam at anyone's eyes.

Safety Notice

- This product complies with IEC 60825-1, Class I laser product. (for Laser mouse models only.)
- The product complies with FCC and CE rules.

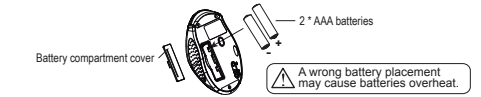
Note

- This product doesn't include Bluetooth dongle.
- The mouse easily connects to notebooks built in Bluetooth technology.
- The mouse also can be connected to Bluetooth dongle through your Bluetooth dongle driver, it is not guaranteed 100% compatible.

Hardware Installation

Part 1. Insert the batteries

- Remove the battery compartment cover on the bottom case of the mouse.
- Fit in the batteries accordingly to the diagram indicated in the battery cabinet.
- Close the battery compartments cover properly.
- Make sure the Power on-off switch on the bottom of the mouse is ON.
- The Low Power LED on the wheel bar will blink 3 seconds if the mouse power is on.



Note

- The unit offers a strong power saving management. Once the mouse accesses the sleeping mode, "to click any button of the mouse" is compulsory to wake it up.
- Power on/off:** Power on/off switch is designed to save the batteries power while non-usage of a longer period.
- The red LED on the scroll bar of the mouse is a low batteries power indicator. It indicates that batteries inside the mouse need to be replaced.
- Make sure that you are not working the mouse on glossy or reflective surfaces.

Part 2. Bluetooth Pairing

Step a

English: Turn on your PC.

Français: Allumez votre PC.

Español: Encender tu PC.

Português: Ligue o seu PC.

Deutsch: Schalten Sie Ihren PC ein.

Русский: Включите компьютер.

Türkçe: Bilgisayarınızı açın.

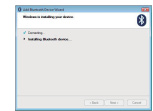
中文: 開啟您的電腦。



Step h

English: Now Bluetooth device is in connecting status.
Français: Maintenant le dispositif Bluetooth est en statut de connexion.
Español: Ahora Bluetooth aparato es en estado de conexión.
Português: Agora o dispositivo Bluetooth está no estado de ligação.
Deutsch: Bitte machen Sie einen Haken bei "Keinen Hauptschlüssel verwenden" und klicken auf "Weiter".

Русский: Ваше устройство Bluetooth подключено!
Türkçe: Bluetooth cihazı bu esnada bağlantıyı gerçekleştirdi.
中文: Windows 正在安裝藍牙裝置



Step i

English: System will show installment finished in dialogue box, then click "finish".

Français: Le système affichera la fin de l'installation dans la boîte de dialogue, puis cliquez "Terminé".

Español: Sistema se va a demostrar la ventana de terminación de instalación, pinchar "Terminar".

Português: Sistema mostrará que a instalação está concluída na caixa de diálogo, em seguida clique "concluir".

Deutsch: Das Bluetooth-Gerät ist nun verbunden.

Русский: Система выведет диалоговое окно об успешном завершении установки. Нажмите кнопку «Завершить».

Türkçe: Sistem, kurulum işleminin bittiğini gösterir bir pencere açar, "finish" butonuna basarak kurulumu tamamlayın.

中文: 系統正在完成新增藍牙裝置精靈。接下來請點選「完成」

