

Declaration of Conformity

We, Manufacturer/Importer
(full address)

G.B.T. Technology Trading GmbH
Ausschlagler Weg 41, 1F 20537 Hamburg, Germany

declare that the product
(description of the apparatus, system, installation to which it refers)

VGA Card

GV-N76G256D-RH

is in conformity with
(reference to the specification under which conformity is declared)
in accordance with 89/336 EEC-EMC Directive

- | | | | |
|--|--|---|---|
| <input type="checkbox"/> EN 55011 | Limits and methods of measurement of radio disturbance characteristics of industrial, scientific and medical (ISM) high frequency equipment | <input checked="" type="checkbox"/> EN 61000-3-2 | Disturbances in supply systems caused |
| <input type="checkbox"/> EN 55013 | Limits and methods of measurement of radio disturbance characteristics of broadcast receivers and associated equipment | <input checked="" type="checkbox"/> EN 61000-3-3 | Disturbances in supply systems caused by household appliances and similar electrical equipment "Voltage fluctuations" |
| <input type="checkbox"/> EN 55014-1 | Limits and methods of measurement of radio disturbance characteristics of household electrical appliances, portable tools and similar electrical apparatus | <input type="checkbox"/> EN 55024 | Information Technology equipment-Immunity characteristics-Limits and methods of measurement |
| <input type="checkbox"/> EN 55015 | Limits and methods of measurement of radio disturbance characteristics of fluorescent lamps and luminaires | <input type="checkbox"/> EN 50082-1 | Generic immunity standard Part 1: Residual, commercial and light industry |
| <input type="checkbox"/> EN 55020 | Immunity from radio interference of broadcast receivers and associated equipment | <input type="checkbox"/> EN 50082-2 | Generic immunity standard Part 2: Industrial environment |
| <input checked="" type="checkbox"/> EN 55022 | Limits and methods of measurement of radio disturbance characteristics of information technology equipment | <input type="checkbox"/> EN 55014-2 | Immunity requirements for household appliances tools and similar apparatus |
| <input type="checkbox"/> DIN VDE 0855 part 10 | Cabled distribution systems; Equipment for receiving and/or distribution from sound and television signals | <input type="checkbox"/> EN 50091-2 | EMC requirements for uninterruptible power systems (UPS) |
| <input type="checkbox"/> part 12 | | | |

CE marking



(EC conformity marking)

The manufacturer also declares the conformity of above mentioned product with the actual required safety standards in accordance with LVD 73/23 EEC

- | | | | |
|--|---|--|---|
| <input type="checkbox"/> EN 60065 | Safety requirements for mains operated electronic and related apparatus for household and similar general use | <input type="checkbox"/> EN 60950 | Safety for information technology equipment including electrical business equipment |
| <input type="checkbox"/> EN 60335 | Safety of household and similar electrical appliances | <input type="checkbox"/> EN 50091-1 | General and Safety requirements for uninterruptible power systems (UPS) |

Manufacturer/Importer

Signature : Timmy Huang

(Stamp)

Date : Jul. 31, 2006

Name : Timmy Huang

DECLARATION OF CONFORMITY

Per FCC Part 2 Section 2.1077(a)



Responsible Party Name: G.B.T. INC. (U.S.A.)

**Address: 17358 Railroad Street
City of Industry, CA 91748**

Phone/Fax No: (818) 854-9338/ (818) 854-9339

hereby declares that the product

Product Name: VGACard

Model Number: GV-N76G256D-RH

Conforms to the following specifications:

FCC Part 15, Subpart B, Section 15.107(a) and Section 15.109
(a), Class B Digital Device

Supplementary Information:

This device complies with part 15 of the FCC Rules. Operation is subject to the following two conditions: (1) This device may not cause harmful and (2) this device must accept any interference received, including that may cause undesired operation.

Representative Person's Name: ERIC LU

Signature: *Eric Lu*

Date: Jul. 31, 2006

GV-N76G256D-RH

GeForce™ 7600 GS Graphics Accelerator

User's Manual

Rev. 101

12MD-N76G2DR-101R



* The WEEE marking on the product indicates this product must not be disposed of with user's other household waste and must be handed over to a designated collection point for the recycling of waste electrical and electronic equipment!!

* The WEEE marking applies only in European Union's member states.

Copyright

© 2006 GIGABYTE TECHNOLOGY CO., LTD

Copyright by **GIGA-BYTE TECHNOLOGY CO., LTD.** ("GBT"). No part of this manual may be reproduced or transmitted in any form without the expressed, written permission of **GBT**.

Trademarks

Third-party brands and names are the property of their respective owners.

Notice

Please do not remove any labels on VGA card, this may void the warranty of this VGA card

Due to rapid change in technology, some of the specifications might be out of date before publication of this booklet.

The author assumes no responsibility for any errors or omissions that may appear in this document nor does the author make a commitment to update the information contained herein.

Macrovision corporation product notice:

This product incorporates copyright protection technology that is protected by U.S. patents and other intellectual property rights.

Use of this copyright protection technology must be authorized by Macrovision, and is intended for home and other limited viewing uses only unless otherwise authorized by Macrovision. Reverse engineering or disassembly is prohibited.

Table of Contents

1. Introduction	3
1.1. Features	3
1.2. Minimum System Requirements	3
2. Hardware Installation	4
2.1. Board Layout	4
2.2. Hardware Installation	6
3. Software Installation	9
3.1. Windows® XP Driver and Utilities Installation	9
3.1.1. Operating System Requirement	9
3.1.2. DirectX Installation	9
3.1.3. Driver Installation	11
3.1.4. Utilities on Driver CD	13
3.1.5. Taskbar Icon	15
3.1.6. Display Properties pages	18
3.1.7. nView Properties pages	25
3.2. Windows® 2000 Driver Installation	30
4. Troubleshooting Tips	31
5. Appendix	32
5.1. How to Reflash the BIOS	32
5.1.1. Reflash BIOS in MS-DOS Mode	32
5.1.2. Reflash BIOS in Windows Mode	32
5.2. Connecting to a HDTV	33
5.3. Resolutions and Color Depth Table (In Windows® XP)	34

1. Introduction

1.1. Features

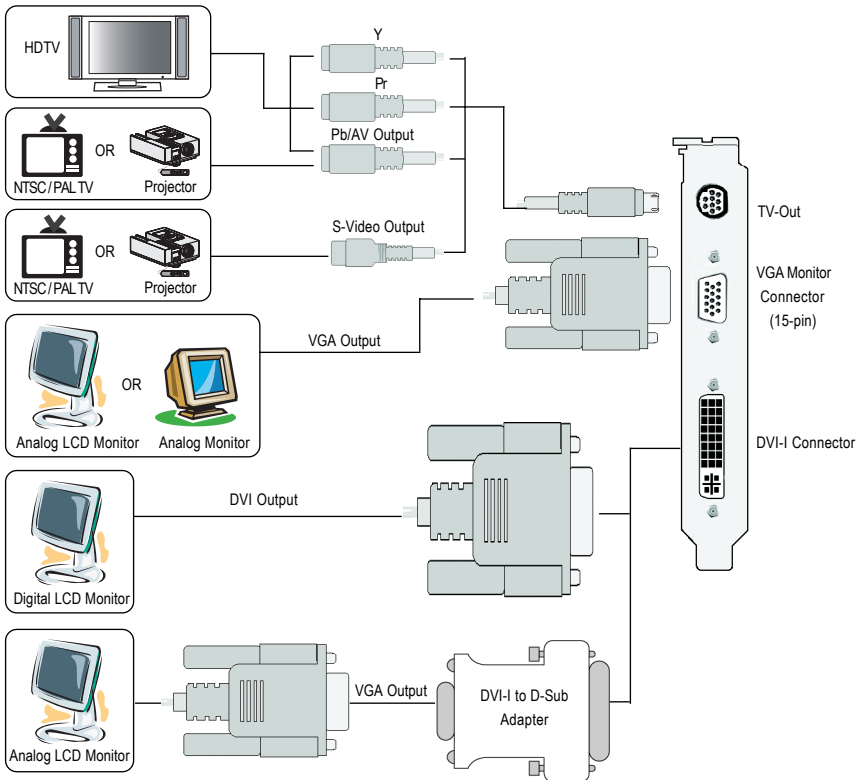
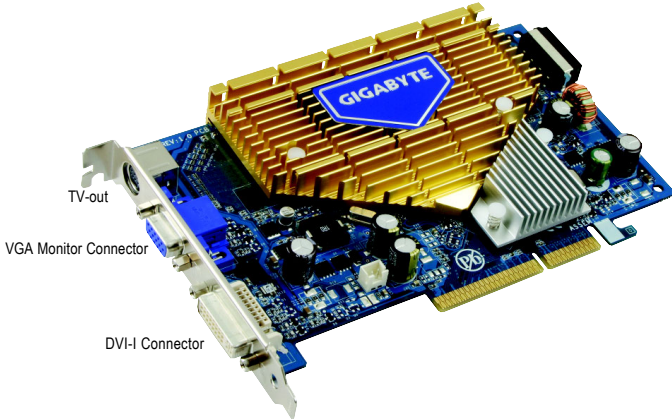
- Powered by **NVIDIA® GeForce™ 7600 GS** Graphics Processing Unit (GPU)
- Supports AGP 8X
- Integrated with 256MB DDR memory
- Supports DirectX 9.0c
- Supports AV / S-Video and HDTV output
- Supports D-sub connector
- Supports DVI-I connector

1.2. Minimum System Requirements

- IBM® or 100% PC compatible with Pentium® III 650MHz or AMD Athlon 650MHz class processor or higher
- One available AGP3.0 compliant slot or better
- Operating Systems Windows® 2000 / Windows® XP
- 64MB system memory
- 50MB of available disk space for full installation
- CD-ROM or DVD-ROM drive
- Minimum power supply 300W

2. Hardware Installation

2.1. Board Layout





Expansion cards contain very delicate Integrated Circuit (IC) chips. To protect them against damage from static electricity, you should follow some precautions whenever you work on your computer.

1. Turn off your computer and unplug power supply.
2. Use a grounded wrist strap before handling computer components. If you do not have one, touch both of your hands to a safely grounded object or to a metal object, such as the power supply case.
3. Place components on a grounded antistatic pad or on the bag that came with the components whenever the components are separated from the system.

The card contains sensitive electric components, which can be easily damaged by static electricity, so the card should be left in its original packing until it is installed.

Unpacking and installation should be done on a grounded anti-static mat. The operator should be wearing an anti-static wristband, grounded at the same point as the anti-static mat.

Inspect the card carton for obvious damage. Shipping and handling may cause damage to your card. Be sure there are no shipping and handling damages on the card before proceeding.

⚡ **DO NOT APPLY POWER TO YOUR SYSTEM IF IT HAS BEEN DAMAGED ON THE CARD.**

⚡ **In order to ensure your graphics card working correctly, please use official Gigabyte BIOS only. Use none official Gigabyte BIOS might cause problem on the graphics card.**

2.2. Hardware Installation

Installing Your graphics card.

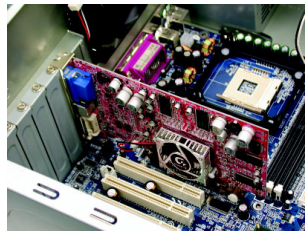
Now that you have prepared your computer, you are ready to install your graphics accelerator card.

To remove the existing graphics card:

1. Power off the computer and monitor, then disconnect the display cable from the back of your computer.

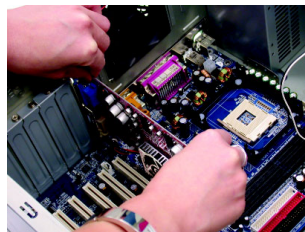


2. Remove the computer cover. If necessary, consult your computer's manual for help in removing the cover.



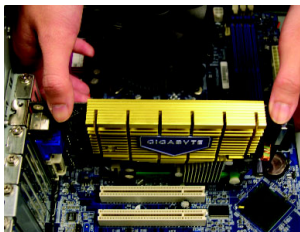
3. Remove any existing graphics card from your computer.

Or, if your computer has any on-board graphics capability, you may need to disable it on the motherboard. For more information, please see your computer documentation.



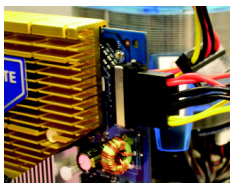
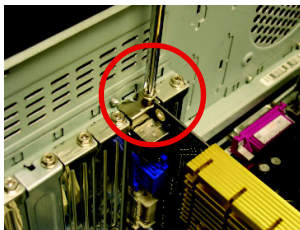
To install your new graphics card:

1. Locate the AGP slot. If necessary, remove the metal cover from this slot; then align your graphics card with the AGP slot, and press it in firmly until the card is fully seated.



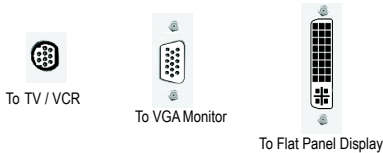
* Please make sure that the gold edge connectors of the graphics card is securely inserted.

2. Replace the screws to fasten the card in place, and replace the computer cover.



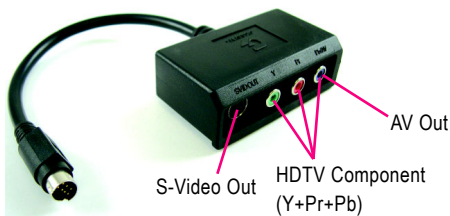
After installation, please connect the power cable to your graphics card, or the system will not boot.

3. Plug the display cable into your card; then turn on the computer and monitor. If your graphics card came with a DVI-I connector, you can connect a flat panel display to the appropriate connector, as shown below...



You are now ready to proceed with the installation of the graphics card driver. Please refer to next chapter for detailed instructions.

GIGABYTE Video Adapter for Nvidia Graphics Cards



Connect to the TV-Out port on the graphics card.

(1) Connecting HDTV

Connect your HDTV cables to the video adapter according to the corresponding color.

(Y= Green, Pr= Red, Pb= Blue)



(2) Connecting S-Video

If your TV has a S-Video connection, connect the S-Video cable from your TV to the S-Video Out port on the adapter.



(3) Connecting AV Output

If your TV has a Composite video connection, you can connect the RCA cable from your TV to the AV Out port on the adapter.



3. Software Installation

In this manual, we assume that your CD-ROM Drive letter to be Drive D:

The installation of Windows® 2000 / Windows® XP drivers is very simple. When you insert the driver CD into your CD-ROM drive, you can see the AUTORUN window (if it does not show up, run "D:\setup.exe"). Then you can follow the guides to setup your graphics card driver. (Please follow the subsection 3.1.3 "Driver installation" to install the driver for your graphics accelerator.)

3.1. Windows® XP Driver and Utilities Installation

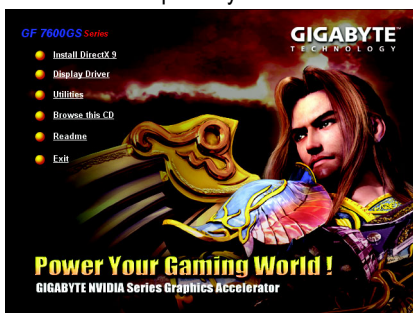
3.1.1. Operating System Requirement

- When loading the graphics card drivers for the system, please make sure your system has installed DirectX 9.0c or later version.
- If you install the graphics card drivers for the motherboard, which consist of SIS or VIA chipsets, please install the appropriate driver program for that motherboard. Or please contact your motherboard nearest dealer for motherboard driver.

3.1.2. DirectX Installation

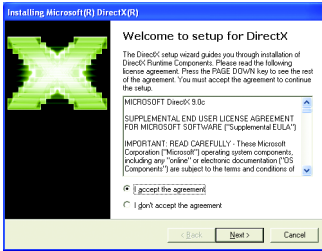
Install Microsoft DirectX to enable 3D hardware acceleration support for Windows® 2000 or Windows® XP to achieve better 3D performance.

- Note: For software MPEG support in Windows® 2000 or Windows® XP, you must install DirectX first. Users who run Windows XP with Service Pack 2 or above do not need to install DirectX separately.

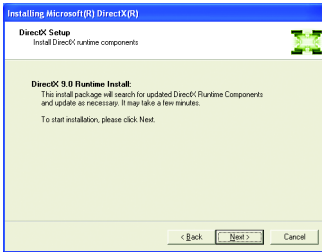


Step 1. When autorun window show up, click the **Install DirectX 9** item.

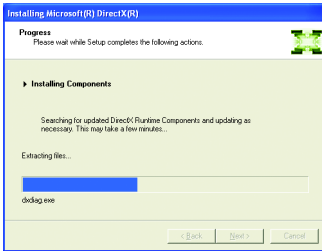




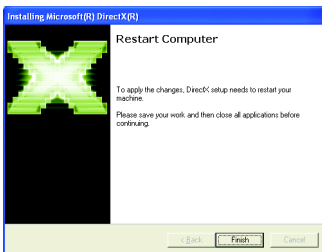
Step 2. Choose **I accept the agreement** and click the "Next" button.



Step 3. Click the "Next" button.



Installing the components.



Step 4. Click "Finish" to restart computer. Then the DirectX 9 installation is completed.

3.1.3. Driver Installation

A. New hardware found

After the graphics card is inserted into your computer at the first time, the windows will automatically detect a new hardware in the system and pop out a "New Hardware Found" message. The following is the step-by-step installation guide.

Step 1: Found new hardware wizard: Video controller (VGA Compatible)

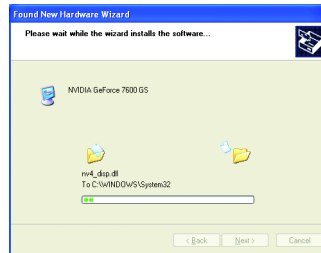
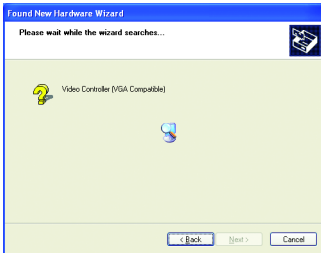


Click the "Next" button to install the driver. (There is a driver CD disk that came with your graphics accelerator, please insert it now.)

Or click the "Cancel" button to install the driver from AUTORUN window.

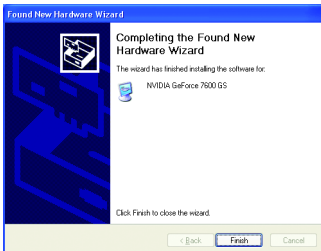
Step 2: Found new hardware wizard: Searching and installing

The wizard will search for the driver and install it automatically.



Step 3: Found new hardware wizard: Finish

Click the "Finish" button to finish the installation.



B. Driver installation (Autorun Window)

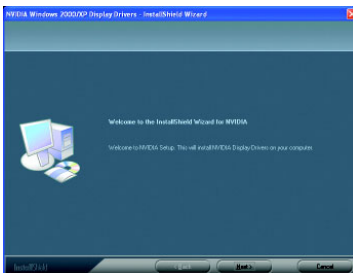
Insert the driver CD disk into your CD-ROM, and then you can see the AUTORUN window. If it does not show up, please run "D:\setup.exe".



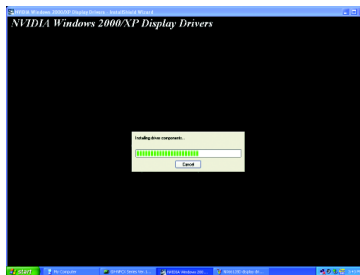
Step 1. When autorun window show up, click the **Display Driver** item.



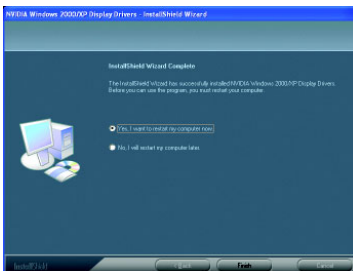
Then click the **Install Display Driver** item.



Step 2. Click the **Next** button.



Windows installing the components.



Step 3. Click the **Finish** button to restart computer. Then the driver installation is completed.

3.1.4. Utilities on Driver CD

Insert the driver CD disk into your CD-ROM, and then you can see the AUTORUN window. If it does not show up, please run "D:\setup.exe".

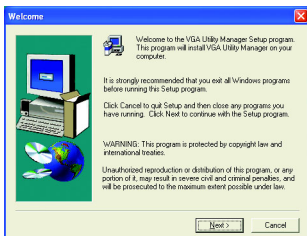
- Install GIGABYTE utilities:



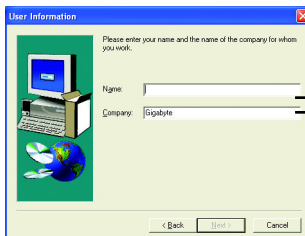
Step 1. When autorun window show up, please click the **Utilities** item.



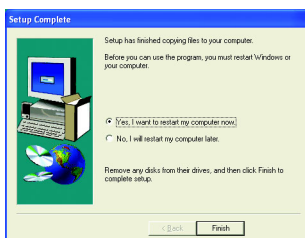
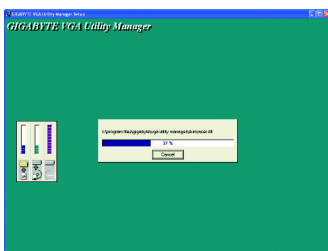
Then click the **GIGABYTE Utility** item.



Step 2. Click the **Next** button.



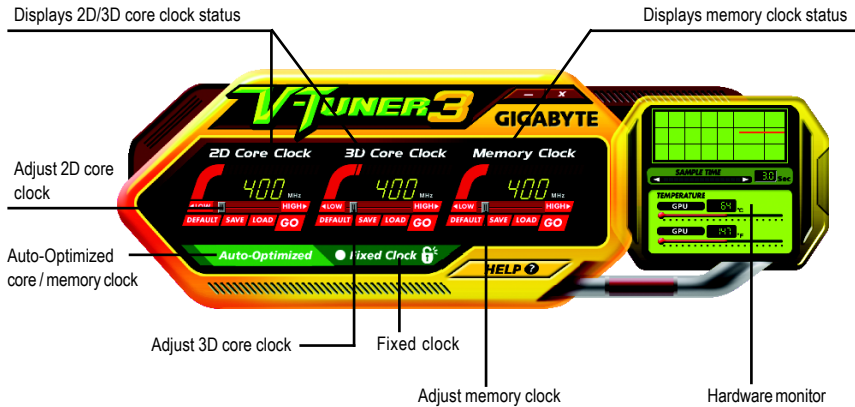
Step 3. Enter your name and company.



Step 4. Click the **Finish** button to restart computer. Then the utilities installation is completed.


V-Tuner 3

V-Tuner 3 lets you adjust the working frequency of the 2D core clock, 3D core clock and memory clock.



Button	Function
DEFAULT	You may click this button to restore to the default setting
SAVE	You may click this button to save the frequency you wanted
LOAD	After saving the specific value, you may click this button to load the frequency you saved last time
Auto-Optimized	The V-Tuner3 clock configuration utility will determine the recommended GPU and memory clock setting your system. If the utility should hang, restart your system and then enter "Auto-Optimized" mode
Fixed Clock	The V-Tuner3 clock configuration utility will lock the GPU and memory clock you choose, whether you restart your system or not. To recharge clock, uncheck the "Fixed Clock" mode and then adjust
Hardware Monitor	If your card has Hardware Monitor function, you will see the extend window. The window will display the GPU temperature and show the thermal curve. Besides, you can move the slider to adjust the frequency-time temperature of GPU, and you will see the change of thermal curve from now on.
HELP	Opens Help page

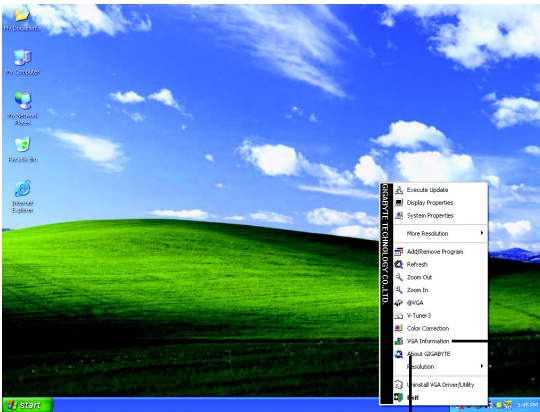
3.1.5. Taskbar Icon

After installation of the display drivers, you will find a GIGABYTE icon  on the taskbar's status area. Right-click this icon to open the GIGABYTE control panel, showing a menu composed of shortcut of the graphics card's enhanced and other functions.

You may click the "Display Properties" item, and then click Settings. Click "Advanced" after clicking Settings. Click the appropriate tab to change your display settings.



Right click the icon.

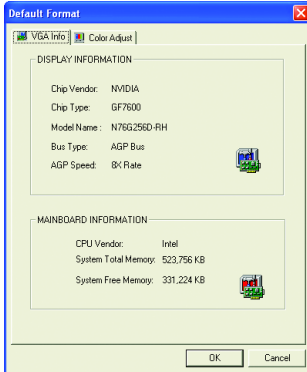


Click "VGA Information" item into the "VGA Info" and "Color Adjust" tabs.

You can link to GIGABYTE website for updated information about the graphics accelerator, latest drivers, and other information.

VGA Information


VGA Info lists the relevant information about your card.



Color Adjust

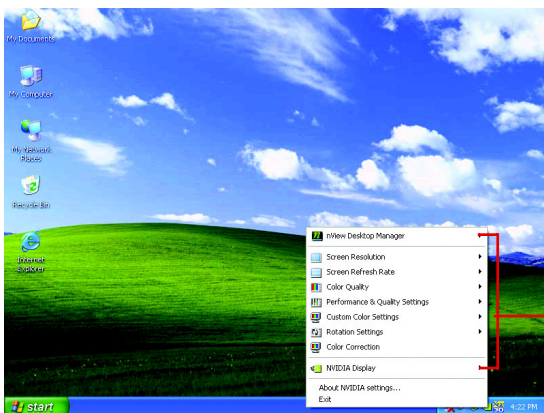
Color Adjust allows you to make color adjustments, such as brightness, contrast and gamma values for each or all of RGB colors.



After installation of the display drivers, you will find a NVIDIA icon  on the taskbar's status area. Click this icon to open the control panel.



Right click the icon.



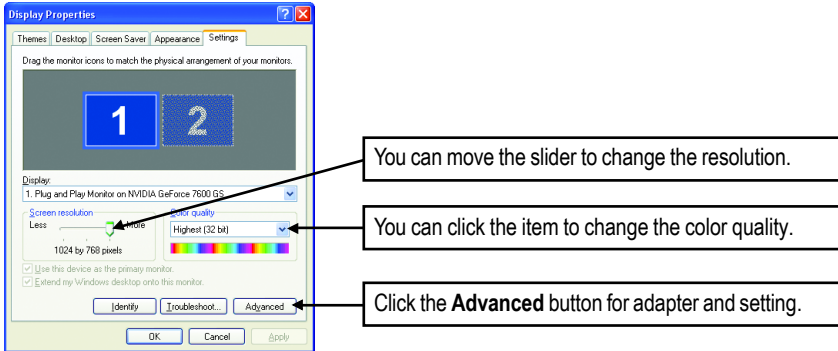
You can adjust the properties of the graphics accelerator from here.

3.1.6. Display Properties pages

To access Display Properties pages, right-click the GIGABYTE icon on the taskbar and select **Display Properties** or right-click on Desktop and then select **Properties**. The **Display Properties** dialog box shows the information of display adapter, color, the range of display area, and the refresh rate.

Settings (Resolutions and Color depth for Windows)

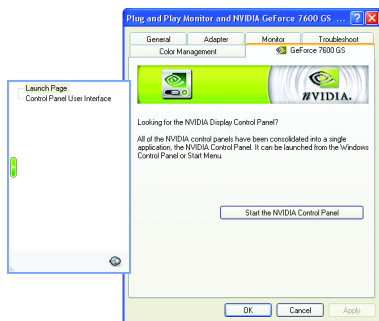
You may adjust the screen resolution and color quality settings in this dialog box.



To access more advanced options, click the **Advanced** button.

GeForce 7600 GS tab

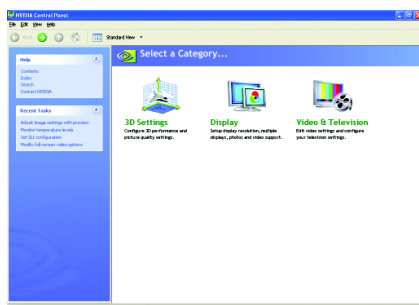
After pressing the **Advanced** button in **Settings**, you'll see the **Plug and Play Monitor and NVIDIA GeForce 7600 GS Properties** dialog box. Click the **GeForce 7600 GS** tab. (You can also click the NVIDIA icon on the taskbar and select **Nvidia Display** to access the GeForce 7600 GS properties page.)



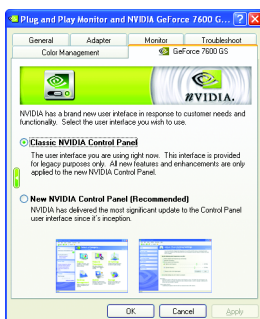
When you access the **GeForce 7600 GS** tab page for the first time, you'll see two items in the left submenu:

- **Launch Page**

All of the NVIDIA control panels have been consolidated into a single application, the NVIDIA Control Panel. Click the **Start the NVIDIA Control Panel** button to open the NVIDIA Control Panel.



In the NVIDIA Control Panel, select a category to alter specific NVIDIA display settings.



- **Control Panel User Interface**

You can choose one of the two user interfaces below:

- **Classic NVIDIA Control Panel**

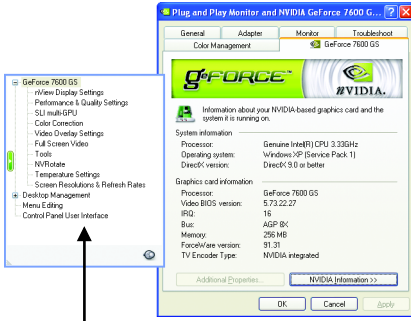
When you select this item and click **Apply**, a submenu that provides the NVIDIA display properties settings will appear on the left side.

- **New NVIDIA Control Panel**

This is the default user interface, which provides control of the NVIDIA graphics driver settings and other NVIDIA utilities you might have installed on your system.

The following section introduces display properties settings using the classic NVIDIA control panel interface as the example.

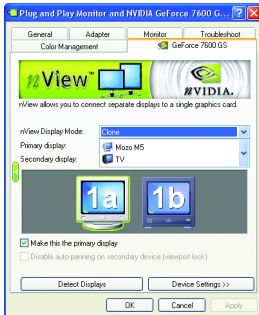
GeForce 7600 GS properties



- This page shows the Adapter, System and Driver version information.

You can select other properties from the pop-out menu.

nView Display Settings properties



- nView allows you to connect separate displays to single graphics card.
 - nView Display mode: select your preferred nView display modes here.
 - Options: Single display/ Clone/ Horizontal Span/ Vertical Span/ Dual View
 - Primary/Secondary display: select a single display or display pair. The selected display combination will appear in the graphical representation below.
 - Make this the primary display: Specifies that the display corresponding to the icon you selected above is the primary display.
 - Click **Apply** to apply settings or click **OK** to save settings.
- If TV is chosen as the display, you will need to select the proper TV format. To do this, click **Device Settings** followed by **Select TV format**. Select the format for your television and then click **Apply** followed by **OK**.

Display	Model	GV-N76G256D-RH
Matrix	CRT+TV	Yes
	CRT+DVI	Yes
	DVI+TV	Yes

Dual-Monitor Setup:

You can set the display to output from two monitors on the nView Display Settings page.

This graphics card supports the following modes:

(1) Clone Mode:

Clone mode indicates that both displays in the display pair show images of the same desktop.

Select **Clone** from the **nView Display Mode** list and click **Apply**.



Clone Mode

(2) Horizontal Span Mode:

Horizontal Span mode indicates that both displays in the display pair function as one wide virtual desktop. The width of each display is half the width of the total virtual desktop width.

Select **Horizontal Span** from the **nView Display Mode** list and click **Apply**.

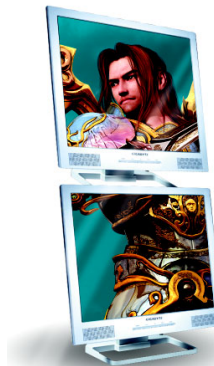


Horizontal Span Mode

(3) Vertical Span Mode:

Vertical Span mode indicates that both displays in the display pair function as one tall virtual desktop. The height of each display is half the height of the total virtual desktop height.

Select **Vertical Span** from the **nView Display Mode** list and click **Apply**.



Vertical Span Mode

(4) Dual View Mode:

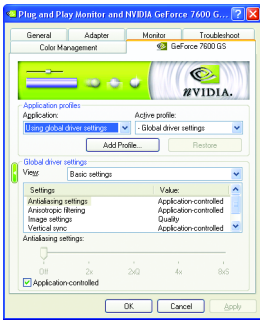
Dualview mode indicates that both displays in the display pair function as one virtual desktop. Unlike Horizontal Span or Vertical Span mode, Dualview treats each display as a separate device. This means that the taskbar will not be stretched across displays and 3D applications are not accelerated as efficiently as when the application spans displays.

Select **DualView** from the **nView Display Mode** list and click **Apply**.



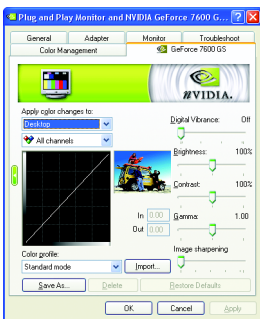
Dual View Mode

Performance and Quality Settings properties



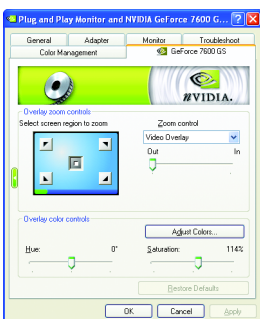
- The sliders lets to decide whether your application should use quality or high performance texture.
 - Application profiles: Select the application profile from the list of profiles.
 - Global driver settings: Select the Settings item and move the slider below to set the degree of antialiasing to be used in Direct3D and OpenGL applications.
 - Antialiasing settings value: allows to set the degree of the Global Driver Settings.

Color Correction properties



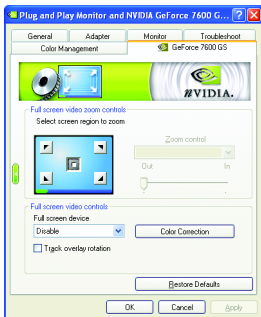
- The **Color Correction Properties** is used to compensate for variations in luminance between a source image and its output on a display device. Adjust the color correction settings to provide more accurate color reproduction of images (such as photographs) on your display device. Also, many 3D-accelerated games may appear too dark to play. Increasing the brightness and/or the gamma value equally across all channels makes these games appear brighter and more playable.

Video Overlay Settings properties



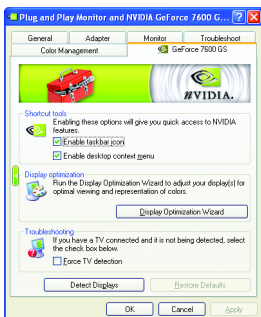
- The **Video Overlay Settings Properties** can adjust Overlay zoom controls and Overlay color controls. There is only one video overlay, which is only available on the **Primary** display. The video overlay controls are automatically activated during playback of any video file type that supports overlay adjustments. The "Adjust Colors" button will access "Color Correction" properties page.

Full Screen Video properties



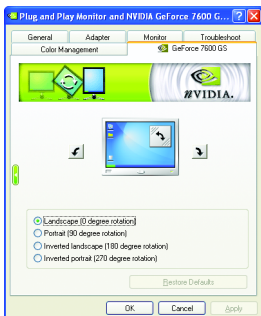
- The **Full Screen Video Properties** can adjust the display to full screen mode when video is being played.

Tools properties



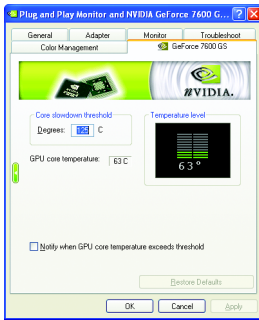
- The NVIDIA settings taskbar utility lets you conveniently access various features and presets you've configured in the Display Properties directly from the Windows taskbar.
 - Shortcut tools
 - The Desktop Manager provides enhanced nView multi-display functionality and helps you organize your applications for use with multiple displays and desktops.
 - Display optimization
 - Run the Display Optimization Wizard to adjust your display(s) for optimal viewing and representation of colors.
 - Troubleshooting
 - This option can be used to force detection of an attached TV set which does not report its presence to the graphics card.

NV Rotate properties



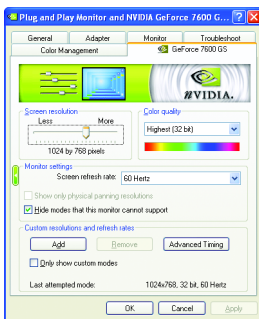
- The **NV Rotate Properties** is used to rotate the screen. If your monitor is capable of operating in either Landscape or Portrait mode, you can adjust the screen by this properties.
 - Landscape (0 degree rotation)
 - Portrait (90 degree rotation)
 - Inverted landscape (180 degree rotation)
 - Inverted portrait (270 degree rotation)

Temperature Settings properties



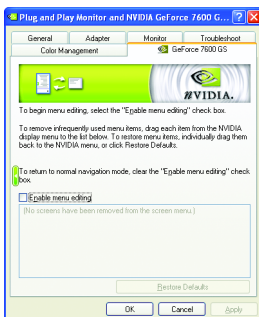
- The **Temperature Properties** can auto detected the GPU Core temperature. You can select the **Notify when GPU core temperature exceeds threshold** check box.

Screen Resolutions & Refresh Rates properties



- The **Screen Resolutions & Refresh Rates Properties** allows you to adjust the screen resolution, color quality and monitor settings (screen refresh rates). Or you can customize resolutions and refresh rates.

Menu Editing properties



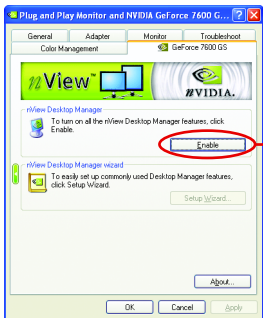
- The **Menu Editing Properties** can remove infrequently used screens by dragging them from the screen menu to the list below. Restore screens to the menu by dragging them individually, or click Restore Defaults.
To begin, select the **Enable menu editing** check box. To return to normal navigation mode, do not select the check box.

3.1.7. nView Properties pages

nView is a set of desktop tools designed to help you be more productive when using your graphics card. With **nView** you can set up multiple desktops to work with your applications. Multiple desktops give you extra desktop areas on which to run your applications so you won't have to crowd several open application windows on one desktop.


Enable the nView Desktop Manager features:

Right-click on desktop and choose Properties>Settings>Advanced>GeForce 7600 GS>Desktop Management

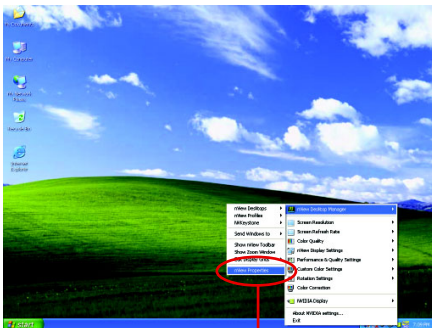


Click the "Enable" button to turn on all the nView Desktop Manager features.

Access nView properties page:

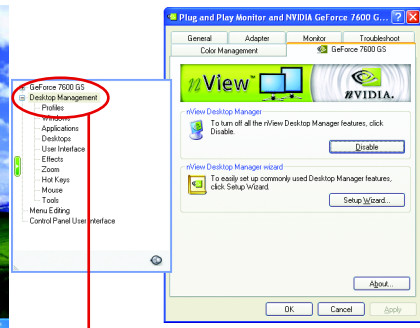
To access the **nView** properties page, you can click the NVIDIA icon  on the taskbar and select **nView Properties** under **nView Desktop Manager** (Method A). Or right-click on Desktop, select Properties>Settings>Advanced>GeForce 7600 GS. Double-click **Desktop Management** item on the pop-up menu (Method B).

Method A:



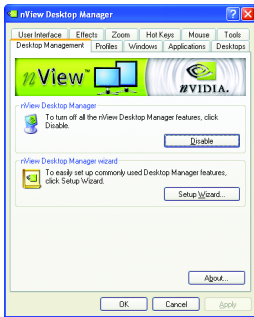
Click the item to start nView Properties.

Method B:



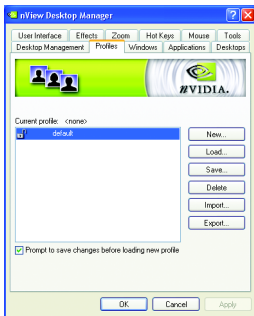
Double-click Desktop Management to see more nView properties.

nView Desktop Management properties



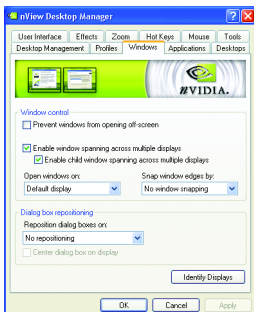
- This tab contains information about the nView Desktop Manager. The setup wizard can also be accessed from this tab.

nView Profiles properties



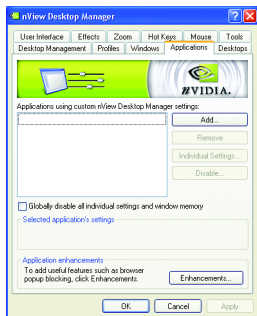
- This tab contains a record all nView display settings for easy software setup.

nView Windows properties



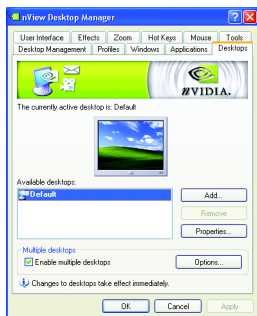
- This tab allows you to control window and dialog box placement when using multiple monitors.

nView Applications properties



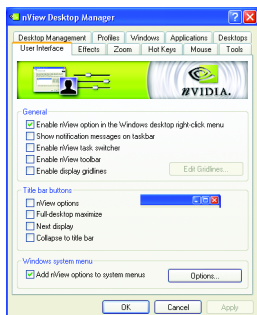
- This tab allows you to control nView settings depending different applications.

nView Desktops properties



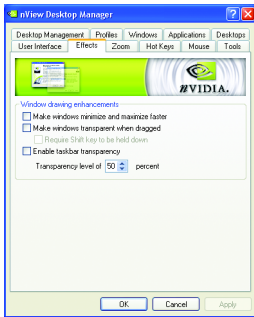
- This tab allows you to create up to 32 unique desktops.

nView User Interface properties



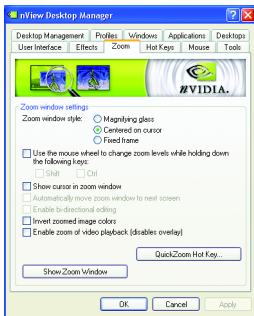
- This tab allows for customization of the nView user interface.

nView Effects properties



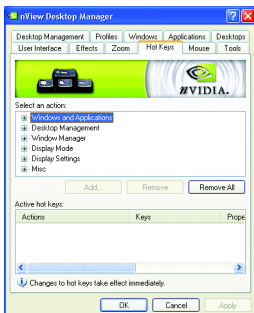
- This tab provides special windows effects that you can apply to your applications.

nView Zoom properties



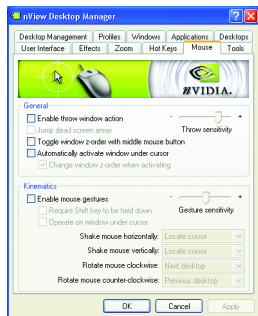
- This tab provides dynamic zoom functionality on the desktop. Also enables full screen video playback via the video mirroring control button.

nView Hot Keys properties



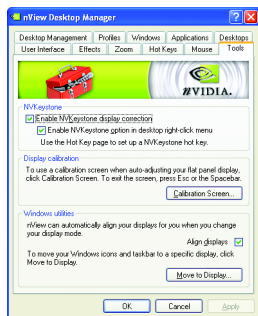
- This tab lets you perform various actions with shortcut keys or key combinations.

nView Mouse properties



- This tab can modify and extend mouse behavior with kinematic actions.

nView Tools properties



- This tab can improve nView functionality for mobile and desktop users.

3.2. Windows® 2000 Driver Installation

With Windows running on your computer, you need to install the graphics card driver to take advantage of the higher performance, resolutions, and special graphics features of the graphics card. To ensure you install the latest driver, insert the Installation CD that shipped with your graphics card.

To install the graphics card driver for Windows® 2000, please insert the Installation CD. Then the AUTORUN window will show up. Click **Install Display Driver** item, and follow the wizard to install the driver.

If Windows® does not show the CD automatically, please run following steps:

1. Click the Start button on the control bar.
2. Select Run.
3. Type the following: D:\SETUP.exe
(If D is not your CD-ROM drive, substitute D with the correct drive letter.)
4. Click "OK".
5. Click on "Install Display Drivers" to begin the Installation Wizard.
6. Click "Next".
7. Click "Yes" to the license agreement.
8. Follow the Wizard's on-screen instructions to complete the installation.



Please make sure the Windows® 2000 have installed Windows® 2000 Service Pack (or later) before installing the graphics accelerator driver.

4. Troubleshooting Tips

The following troubleshooting tips may help if you experience problems. Contact your dealer or GIGABYTE for more advanced troubleshooting information.

- Check that the card is seated properly in the AGP slot.
- Ensure that the display cable is securely fastened to the card's display connector.
- Make sure that the monitor and computer are plugged in and receiving power.
- If necessary, disable any built-in graphics capabilities on your motherboard. For more information, consult your computer's manual or manufacturer.

(NOTE: Some manufacturers do not allow the built-in graphics to be disabled or to become the secondary display.)

- Make sure you selected the appropriate display device and graphics card when you installed the graphics driver.
- Restart your computer. Press the **F8** key on your keyboard after system starts up. When the Windows Advanced Options Menu appears, select Safe Mode and press Enter. After getting into Safe Mode, in Device Manager check whether the driver for the graphics card is correct.
- For more assistance, use the Troubleshooting Guide located in the Windows® Help or contact your computer manufacturer.



CAUTION

If necessary, adjust your monitor's setting by monitor's adjust panel to make the screen looks focused, crisp, and sharp. (Please refer to the monitor's manual.)

5. Appendix

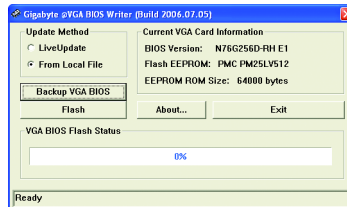
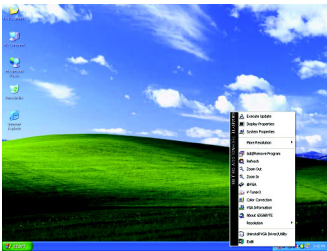
5.1. How to Reflash the BIOS

5.1.1. Reflash BIOS in MS-DOS Mode

1. Extract the downloaded Zip file to your hard disk(s) or floppy disk. This procedure assumes drive A.
2. Restart the computer in MS-DOS mode. (For Windows 2000/XP, you need a startup disk to restart the computer in MS-DOS mode.)
3. Change the command prompt to A:\>.
4. To back up the current BIOS, at the A:\> prompt, type [BIOS flash utility name] -s [BIOS file name] (example: **gvf18 -s N76G8DR.F1**) and press **Enter**.
5. To flash BIOS, at the A:\> prompt, type [BIOS flash utility name] -p [BIOS file name] (example: **gvf18 -p N76G8DR.F2**) and press **Enter**.
6. Wait until it's done, then restart your computer.

5.1.2. Reflash BIOS in Windows Mode

1. After installing the display drivers, you will find a GIGABYTE icon in the lower-right corner of the Taskbar. Right-click to select the @VGA utility.



@VGA flash BIOS utility.

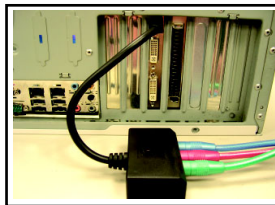
2. Update BIOS through the Internet
 - a. Select the Live Update check box and click Flash. Then @VGA will automatically download the BIOS for your card from GIGABYTE @VGA server and do the update for you. (@VGA will not download/update the BIOS if it detects the current BIOS on your card is the latest one.)
3. Update BIOS NOT through the Internet
 - a. Download the BIOS ZIP file for your card from GIGABYTE website and extract it to your hard disk (or floppy disk).
 - b. Select the From Local File check box and then click Flash.
 - c. Select the BIOS file from your hard disk (or floppy disk).
 - d. Complete the update procedure following the on-screen instructions.

5.2. Connecting to a HDTV

Use the included video adapter to connect a HDTV to the graphics card.

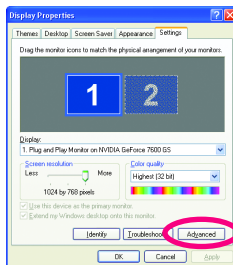
Step 1:

Connect the HDTV component cable to the adapter according to the corresponding color. (Y= Green, Pr= Red, Pb= Blue). Connect the TV Out cable from the adapter to the TV Out port on your graphics card.



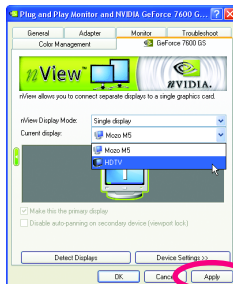
Step 2:

After installation of the graphics card driver, right-click on Desktop and select **Properties**. When **Display Properties** dialog box appears, select the **Settings** tab. In **Settings**, click the **Advanced** button.



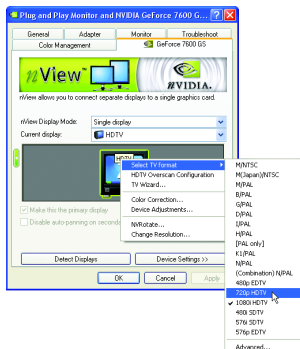
Step 3:

Click the **Geforce 7600 GS** tab when advanced properties dialog box appears. Select **n-View Display Settings** from the side menu and select **HDTV** from the **Current display** list. Then click **Apply**.



Step 4:

Right-click on the HDTV icon and select TV format depending on your HDTV. Then click **Apply** to complete the settings.



5.3. Resolutions and Color Depth Table (In Windows® XP)

GeForce 7600 GS Single Display Standard Modes

Display Screen Resolution	Refresh Rate (Hz)	Color Depth (bpp)		
		8bpp(256 color) Standard mode	16bpp(65K color) High mode	32bpp(16.7M) True mode
320 x 200	60~75	✓	✓	✓
320 x 240	60~75	✓	✓	✓
400 x 300	60~75	✓	✓	✓
480 x 360	60~75	✓	✓	✓
512 x 384	60~75	✓	✓	✓
640 x 400 (16:10)	60~75	✓	✓	✓
640 x 480	60~240	✓	✓	✓
720 x 480	60	✓	✓	✓
720 x 576	50~60	✓	✓	✓
800 x 600	60~240	✓	✓	✓
848 x 480	60~240	✓	✓	✓
960 x 600 (16:10)	60~240	✓	✓	✓
1024 x 768	60~200 240	✓ ✓	✓ ✓	✓ X
1088 x 612 (16:9)	60~200 240	✓ ✓	✓ ✓	✓ X
1152 x 864	60~170 200	✓ ✓	✓ ✓	✓ X
1280 x 720 (16:9)	60~150 170	✓ ✓	✓ ✓	✓ X
1280 x 768	60~150 170	✓ ✓	✓ ✓	✓ X
1280 x 960	60~150 170	✓ ✓	✓ ✓	✓ X
1280 x 1024	60~150 170	✓ ✓	✓ ✓	✓ X
1360 x 768	60~150 170	✓ ✓	✓ ✓	✓ X
1600 x 900 (16:9)	60~120 140~150	✓ ✓	✓ ✓	✓ X
1600 x 1024	60~100 120	✓ ✓	✓ ✓	✓ X

To be continued...

Display Screen Resolution	Refresh Rate (Hz)	Color Depth (bpp)		
		8bpp(256 color) Standard mode	16bpp (65K color) High mode	32bpp (16.7M) True mode
1600 x 1200	60~100	✓	✓	✓
	120	✓	✓	X
1920 x 1080 (16:9)	30~85	✓	✓	✓
	100	✓	✓	X
1920 x 1200 (16:10)	60~85	✓	✓	✓
	100	✓	✓	X
1920 x 1440	60~85	✓	✓	✓
2048 x 1536	60~85	✓	✓	✓

* This table is for reference only. The actual resolutions supported depend on the monitor you use.

