

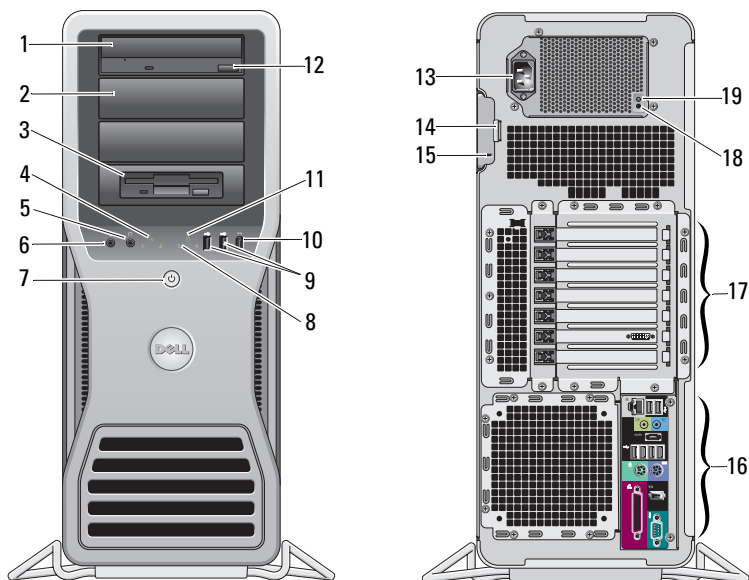


## About Warnings

 **WARNING:** A WARNING indicates a potential for property damage, personal injury, or death.

# Dell Precision™ Workstation T7500/T7500n Setup and Features Information

## Front and Back View



- |   |                           |    |                            |
|---|---------------------------|----|----------------------------|
| 1 | optical drive             | 2  | optical drive filler panel |
| 3 | flex bay                  | 4  | link integrity light       |
| 5 | headphone connector       | 6  | microphone connector       |
| 7 | power button, power light | 8  | diagnostic lights (4)      |
| 9 | USB 2.0 connectors (2)    | 10 | IEEE 1394 connector        |

June 2009

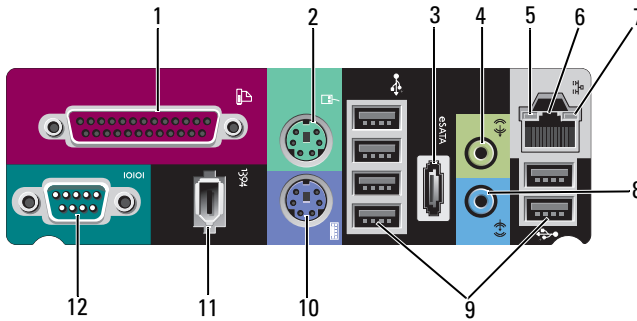


0C388MA02

Model: DCDO

- |    |                               |    |                                      |
|----|-------------------------------|----|--------------------------------------|
| 11 | drive activity light          | 12 | optical drive eject button           |
| 13 | power connector               | 14 | cover-release latch and padlock ring |
| 15 | security cable slot           | 16 | back panel connectors                |
| 17 | expansion card slots (7)      | 18 | power supply diagnostic button       |
| 19 | power supply diagnostic light |    |                                      |

## Back Panel Connectors



- |    |                        |    |                           |
|----|------------------------|----|---------------------------|
| 1  | parallel connector     | 2  | PS/2 mouse connector      |
| 3  | eSATA connector        | 4  | line-out connector        |
| 5  | network activity light | 6  | network adapter connector |
| 7  | link integrity light   | 8  | line-in connector         |
| 9  | USB 2.0 connectors (6) | 10 | PS/2 keyboard connector   |
| 11 | IEEE 1394 connector    | 12 | serial connector          |

## Quick Setup

**WARNING:** Before you begin any of the procedures in this section, read the safety information that shipped with your computer. For additional best practices information see [www.dell.com/regulatory\\_compliance](http://www.dell.com/regulatory_compliance).

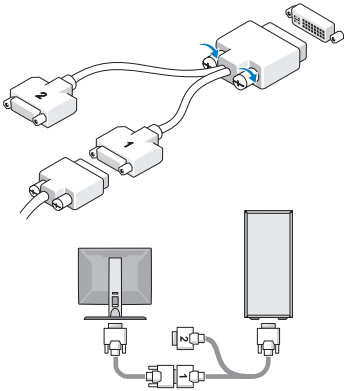
**CAUTION:** Do not install your computer in an enclosure where there is limited, restricted or no airflow. Restricting the airflow impacts your computer's performance, possibly causing it to overheat. If your computer is installed in a corner on a desk leave at least 5.1 cm (2 in) clearance from the back of the computer to the wall to permit the airflow required for proper ventilation.

**NOTE:** Clean dust off the grill at the back of the computer whenever it is dusty.

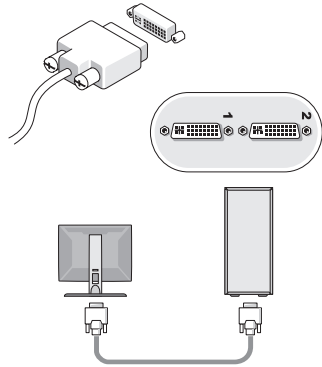
**NOTE:** Some devices shown below may not be included if you did not order them.

1 Connect the monitor using one of the following cables:

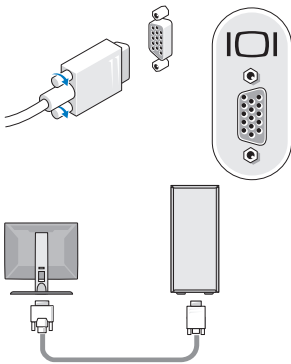
a The dual monitor Y-adapter cable



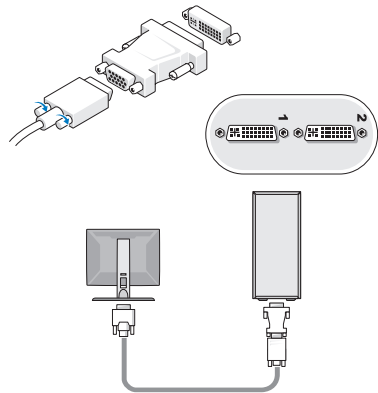
b The white DVI cable



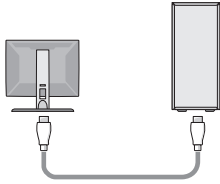
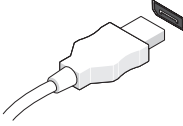
c The blue VGA cable



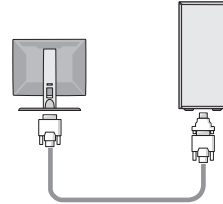
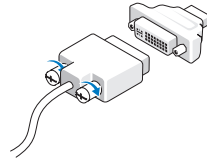
d The blue VGA cable to a DVI adapter



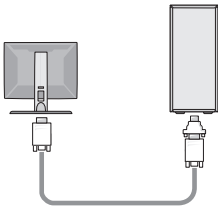
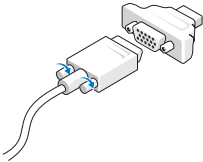
**e** The DisplayPort cable



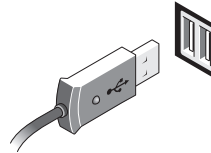
**f** The DisplayPort to a DVI adapter



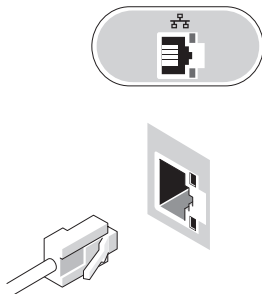
**g** The DisplayPort to a VGA adapter



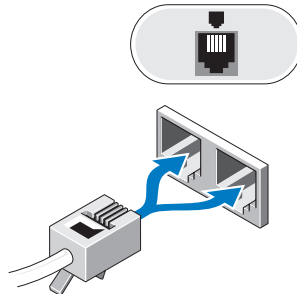
**2** Connect a USB device, such as a keyboard or mouse.



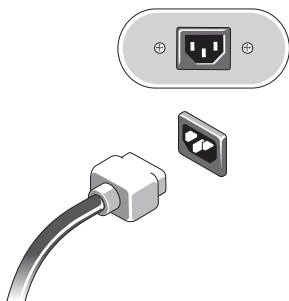
3 Connect the network cable.



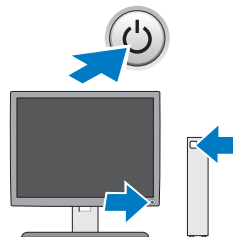
4 Connect the modem (if installed).



5 Connect the power cable(s).



6 Press the power buttons on the monitor and the computer.



## Specifications



**NOTE:** The following specifications are only those required by law to ship with your computer. For a complete and current listing of the specifications for your computer, go to [support.dell.com](http://support.dell.com).

---

### Processor

---

Type	Dual-Core Intel® Xeon® Processor 5500 series Quad-Core Intel® Xeon® Processor 5500 series
------	--

---

### System Information

---

System chipset	Intel 5500/5520
Data bus width	64 bits

---

**Video**

---

Type:

Discrete

PCI Express 2.0 x16 (two slots)

**NOTE:** Support for two full height, full length graphics cards using the PCIe x16 graphics card slot

---

**Drives**

---

Externally accessible

four 5.25 inch drive bays (can support 3.5 inch flex bay)

Internally accessible

four 3.5 inch drive bays

Available devices

- up to five 3.5 inch SATA or four SAS hard drives
- up to three of the following 5.25-inch drives: SATA DVD-ROM, DVD+/-RW super multi drive/Blu-ray™ drive
- one 3.5-inch USB media card reader or
- one 3.5-inch FDD drive

**NOTE:** Supports a maximum of five hard drives

---

**Controls and Lights**

---

Front of the computer:

Power button

push button

Power light

green light — Blinking green in sleep state; solid green for power-on state

amber light — A blinking amber light indicates a problem with the system board. A solid amber light when the computer does not start indicates that the system board cannot start initialization but that the power supply is good - in normal operating state

no light — System is in the off state

Drive activity light

green light — indicates that the computer is reading data from or writing data to the SATA hard drive or CD/DVD

Link integrity light

green light — A good connection exists between the network and the computer

off (no light) — The computer is not detecting a physical connection to the network

---

**Controls and Lights (continued)**

---

Back of the computer:

Link integrity light (on integrated network adapter)	green light — A good connection at 10Mbps exists between the network and the computer orange light — A good connection at 100Mbps exists between the network and the computer yellow light — A good connection at 1000Mbps exists between the network and the computer off (no light) — The computer is not detecting a physical connection to the network
Network activity light (on integrated network adapter)	yellow blinking light
Power supply diagnostic LED	green light — Indicates the power supply is working properly off (no light) — Indicates that no power is available for the power supply

---

**Power**

---

AC power supply:

Voltage (see the safety information that shipped with your computer for important voltage setting information)	100–240 VAC, 50–60 Hz, 12.0 A
Coin-cell battery	3 V CR2032 lithium coin cell

---

**Physical**

---

Height	56.50 cm (22.25 inches)
Width	21.60 cm (8.50 inches)
Depth	55.30 cm (21.80 inches)
Weight	at least 24.90 kg (55 lbs)



**WARNING:** Your computer is heavy and can be difficult to maneuver. Seek assistance before attempting to lift, move, or tilt it. This computer requires a two-man lift. Always lift correctly to avoid injury. Avoid bending over while lifting.

---

**Environmental**

---

Temperature:

Operating 10° to 35° C (50° to 95° F)

Storage -40° to 65° C (-40° to 149° F)

Relative humidity 20% to 80% (noncondensing)

Altitude:

Operating -15.2 to 3048 m (-50 to 10,000 ft)

Storage -15.2 to 10,668 m (-50 to 35,000 ft)

Airborne contaminant level G2 or lower as defined by ISA-S71.04-1985

---

**Finding More Information and Resources**

---

**If you need to:**

**See:**

Find safety best practices information for your computer, review Warranty information, Terms and Conditions(U.S only), Safety instructions, Regulatory information, Ergonomics information, and End User License Agreement.

The safety and regulatory documents that shipped with your computer and the Regulatory Compliance Homepage at **[www.dell.com/regulatory\\_compliance](http://www.dell.com/regulatory_compliance)**.

---

**Information in this document is subject to change without notice.**

© 2009 Dell Inc. All rights reserved. Printed in the U.S.A.

Reproduction of these materials in any manner whatsoever without the written permission of Dell Inc. is strictly forbidden.

Trademarks used in this text: *Dell*, the *DELL* logo, and *Dell Precision* are trademarks of Dell Inc.; *Intel* is a registered trademark of Intel Corporation in the U.S. and other countries; *Blu-ray Disc* is a trademark of the Blu-ray Disc Association.

Other trademarks and trade names may be used in this document to refer to either the entities claiming the marks and names or their products. Dell Inc. disclaims any proprietary interest in trademarks and trade names other than its own.