

Notes on trip to "Trichilia Creek" in the Guánica Commonwealth Forest

Date: Thursday, 28 August 2003

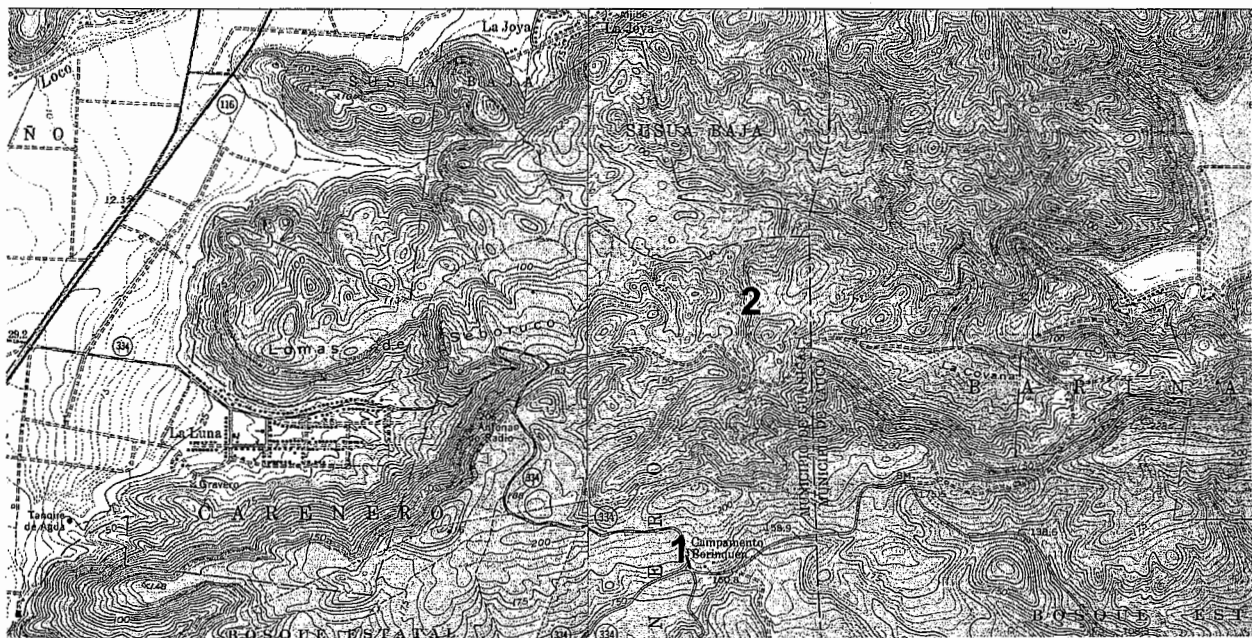
Participants: Gary J. Breckon, Duane A. Kolterman, Omar Monsegur, Miguel Canals

We arrived at Guánica just after 8:00 am. Miguel Canals showed us a single plant (previously collected by Pedro Acevedo) of *Cordia rupicola*, in poor condition, along the road near the office [location 1 on the map below]; he has never seen it in reproductive condition. He then took us to "Trichilia Creek" via the Cobanitas trail in his 4 x 4 vehicle and then on foot to and along the creek. We hiked a ways down the creek (NNE) [location 2 on the map below]; beyond the creek joins another that flows \pm east to Barina. Breckon collected several numbers (including a *Celtis*, a new record for the forest, with a dbh of ca. 2 feet); the plants of greatest interest were *Trichilia triacantha* and *Ottoschulzia rhodoxylon*.

***Trichilia triacantha*:** We saw a total of 24 trees and saplings of different sizes; there are some more beyond where we were today, according to Miguel Canals. We also saw a total of 46 seedlings. The first large tree was arching, ca. 12 m high, with two trunks from the base (dbh = 6.4 cm and 8.9 cm), flower buds, and 26 seedlings around it, some of them chlorotic and sickly. The bark was distinctive: the new bark was orange-brown and relatively smooth, exfoliating in small, dark brown, chinky squares \leq 1 cm in size with age; mostly new bark was showing. The GPS reading at this point was 17°59.128' N, 66°52.028' W. A bit farther along, on the west-facing slope above the creek (along with trees # 3-17 of *Ottoschulzia rhodoxylon*) was another large tree, branched into two trunks above the base (dbh = 15.3 cm and 11.6 cm), with open flowers and a sapling $<$ 1 m tall and five small seedlings ca. 4-5 cm tall nearby.

***Ottoschulzia rhodoxylon*:** See data sheet. Seventeen trees were seen; the first was collected but not measured and the others were measured but not collected. Tree # 2 was on the east-facing slope; trees # 3-17 were on the west-facing slope. All were fairly tall trees.

We left at ca. 11:30 am. We need to return to this site and spend a whole day, and we need to bring long pole pruners and a group of people to help locate the plants.



Ottoschulzia rhodoxylon
"Trichilia Creek"
Guánica Commonwealth Forest
Thursday, 28 August 2003

Tree #	dbh (cm)	Notes
2	15.7	single trunk, ca. 50-60 ft. (15-18 m) tall; 15 seedlings counted below tree, in and near creek bed, none above tree on drier slope
3	17.40	2 trunks from above the base; no saplings or seedlings were seen under trees # 3-17
4	10.58	2 trunks
5	8.3	single trunk
6	5.4	single trunk
7	7.7	single trunk
8	3.7	single trunk
9	4.3	single trunk
10	8.9	single trunk
11	10.7	single trunk
12	7.3	single trunk
13	6.2	single trunk
14	6.3	single trunk
15	7.48	3 trunks
16	7.12	3 trunks
17	2.5	single trunk

16 = number of trees measured (n)
8.099 = mean dbh (cm)
3.994 = sample standard deviation (s.d.)