

SanDisk Connect™ Wireless Flash Drive

USER MANUAL

(For Use with iPhone, iPad or iPod touch)



SanDisk®

SanDisk and SanDisk Ultra are trademarks of SanDisk Corporation, registered in the United States and other countries. SanDisk Connect is a trademark of SanDisk Corporation. Apple, the Apple logo, iPhone, iPad, iPod touch, and Mac are trademarks of Apple Inc., registered in the U.S. and other countries. App Store is a service mark of Apple Inc. The microSD and microSDHC marks are trademarks of SD-3C, LLC. Wi-Fi is a registered trademarks of the Wi-Fi Alliance. All other trademarks are the property of their respective owners.

©2015 SanDisk Corporation. All rights reserved.

Table of Contents

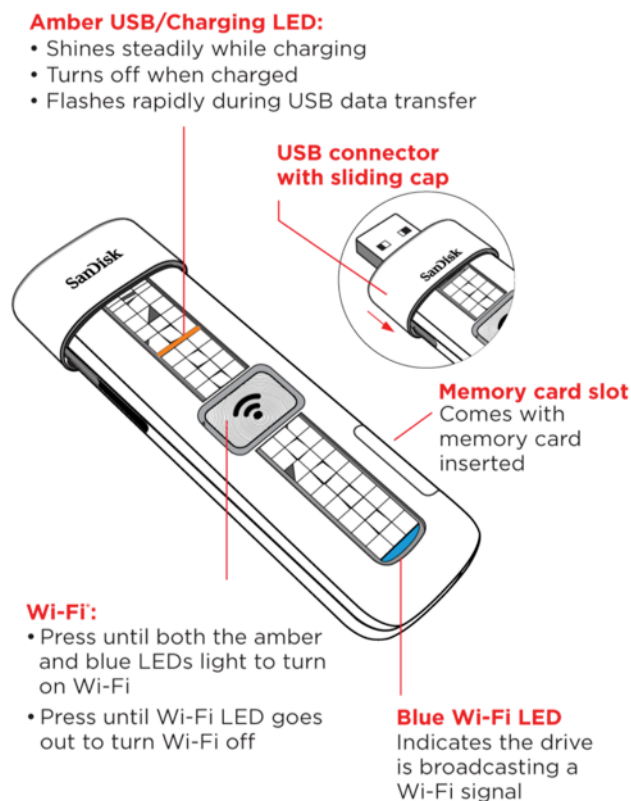
1. INTRODUCTION	1
Wireless Flash Drive Overview	1
Features	1
System Requirements	0
Supported File Formats	0
Hardware Specifications	0
2. GETTING STARTED	3
Charging the Wireless Drive	3
Understanding the Wireless Drive LEDs	4
Downloading the Wireless Flash Drive App	4
Connecting to the Wireless Drive	4
<i>Connecting via Wi-Fi</i>	<i>5</i>
<i>Accessing the Drive without the App</i>	<i>6</i>
Loading Content on the Wireless Drive	6
<i>From a PC</i>	<i>7</i>
<i>From a Mobile Device</i>	<i>8</i>
3. WORKING WITH FILES	11
Wireless Drive Application Overview	11
<i>Accessing Files through the Wireless Drive App</i>	<i>11</i>
<i>Using Wireless Drive Main Screen</i>	<i>12</i>
Viewing Photos	12
Streaming Videos	14
Using the Wireless Flash Drive with iTunes	15
Playing Music	15
<i>Controlling Music from Outside the Music Play Screen</i>	<i>17</i>
Moving Files	17
<i>Downloading Files</i>	<i>18</i>
<i>Uploading Files</i>	<i>19</i>
Displaying the Upload Options	20
Upload Options	20
Uploading Photos and Videos	20
Backing Up All Your Photos and Video From Your Camera Roll	22
Uploading Files from Your iPhone, iPad, or iPod touch	22
Creating a New Folder	23
<i>Sharing Your Files</i>	<i>24</i>
Allowing Access to your Wireless Drive	24
Sharing Files with Other Apps (Open In)	25
Sending Files to Others	25

Deleting Files and Folders	27
Unsupported File Formats	28
4. MANAGING THE WIRELESS DRIVE	29
Updating the Firmware	29
Updating the App	31
Managing Wireless Drive Settings	32
<i>Changing the Wireless Drive Network Name</i>	32
<i>Creating/Changing a Password</i>	34
<i>Restoring Factory Settings</i>	35
<i>Using Internet Connection</i>	35
<i>Keeping Your Cellular Connection</i>	37
<i>Battery Gauge</i>	37
<i>Setting the Power Save Timer</i>	38
<i>Accessing the Drive Using Third-Party Apps</i>	38
<i>Compressing Videos During Transfer</i>	38
<i>Getting Support</i>	39
Quick Start Guide	39
About	39
5. PRODUCT AND SAFETY INFORMATION	40
Product Specifications	40
Regulatory Information	41
Safety and Care	42
Cleaning	0
Maintenance and Storage	1
<i>Standard Maintenance</i>	1
<i>Long Term Storage</i>	1
<i>Recycling</i>	1
INDEX	0

1. Introduction

Wireless Flash Drive Overview

The SanDisk Connect™ Wireless Flash Drive stores, shares, and streams digital content wirelessly across multiple mobile devices.



Features

- **Share your files with others.** The Wireless Drive creates its own wireless network. Up to eight mobile devices can be wirelessly connected and access files on the Drive at the same time.
- **Stay connected to the Internet while accessing content from the Wireless Drive.** In areas where Internet Wi-Fi access is available, you can stream content from the Wireless Drive and keep your mobile device connected to the Internet at the same time¹.
- **Use the Wireless Drive for extra storage.** Up to 64 GB of space can be used to store digital content from a mobile device.

System Requirements

- Mobile devices running iOS version 5.1.1 or higher or other Wi-Fi-enabled devices with a web browser
- Computers running Windows® 10, Windows 8, Windows 7, Windows Vista®, or Mac OS 10.6 or higher

Supported File Formats

- Any file formats supported by your mobile device
- For additional information about supported formats, go to www.sandisk.com/support

Hardware Specifications

- Drive Capacity: 16 GB, 32 GB or 64 GB²
- USB: 2.0 compatible
- Battery: Non-user replaceable lithium-ion battery
- Battery Life: Up to 4 hours of continuous streaming and standby³
- Maximum Wi-Fi range: 150 feet (45 meters)
- Wireless Drive Memory Card Formats:
 - For drives shipping with 16GB or 32GB microSD™ cards: FAT32
 - For drives shipping with 64GB microSD cards: ExFAT

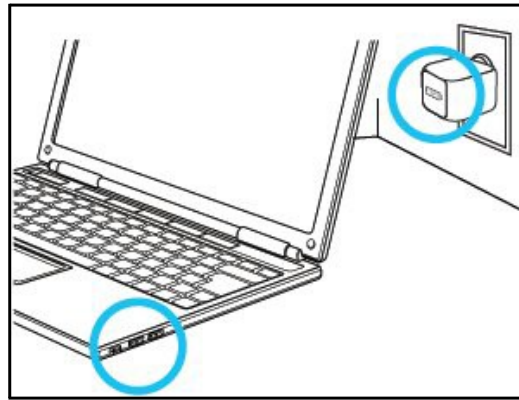
Note: Only the 64GB version of the Wireless Flash Drive supports ExFAT, enabling to load and use files larger than 4GB.

2. Getting Started

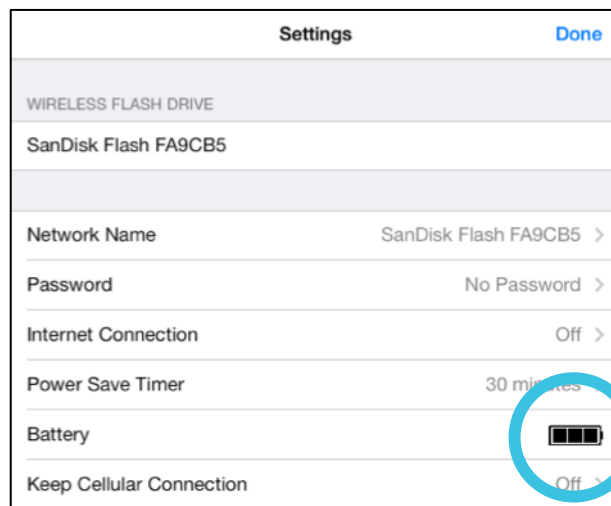
Charging the Wireless Drive

Although the Wireless Drive is shipped with a charged battery, we urge you to fully charge the Drive before you begin to use it. (This can take up to two hours.)

- Plug your Wireless Drive into a computer USB port or a USB AC adaptor to charge it:



- The in-app Battery Level Indicator will give you instant information as to your device battery status.



Note: Although the Wireless Drive cannot be used wirelessly while it's plugged into a computer USB port, it can be used as a normal flash drive. However, the Drive can be used wirelessly while it's charging in a USB AC adaptor. If you want to use the Drive while it's plugged into an adaptor, be sure to turn it on before you plug it in.

Understanding the Wireless Drive LEDs

Mode	LEDs	Activity
Wi-Fi on	Blue	Flashes
Turn Wi-Fi on and off	Blue and Amber	Flash three times
Wi-Fi data transfer in progress	Blue	Flashes rapidly
USB data transfer in progress	Amber	Flashes rapidly
Battery charging	Amber	Shines steadily
Battery fully charged	Amber	Off
Battery strength 5-10% (Wi-Fi is on)	Amber	Repeatedly flashes three times
Factory Reset	Blue and Amber	Flash rapidly after Wi-Fi button has been held in for 30 seconds (does NOT delete files stored on the Drive)

Downloading the Wireless Flash Drive App

Download the free Wireless Drive app from the App Store onto each mobile device you want to use with the Drive.

1. Download the Wireless Drive app.
2. Find the Wireless Drive app icon on your mobile device and tap it to open the Wireless Drive app.



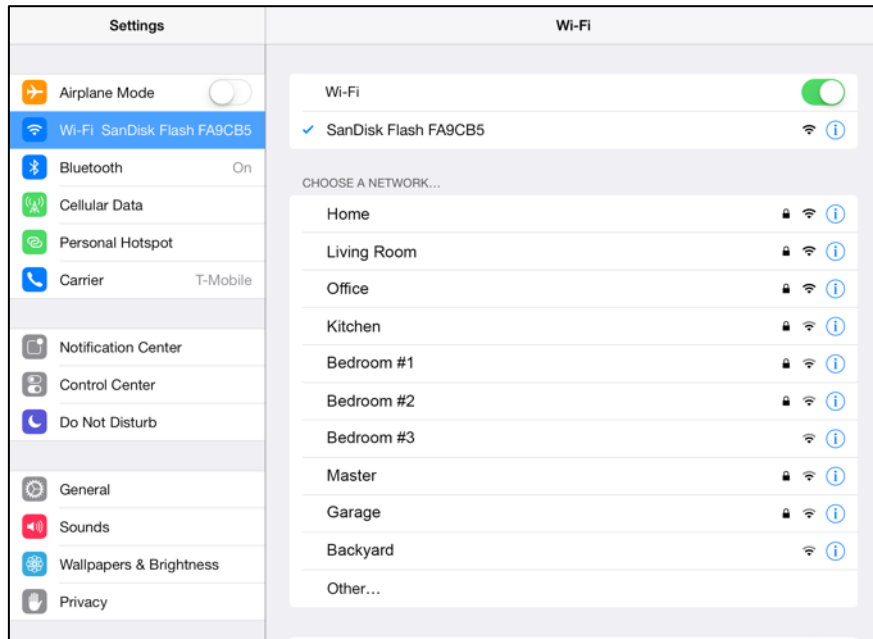
Connecting to the Wireless Drive

You can connect to the Wireless Drive Wi-Fi network on your mobile device in two ways:

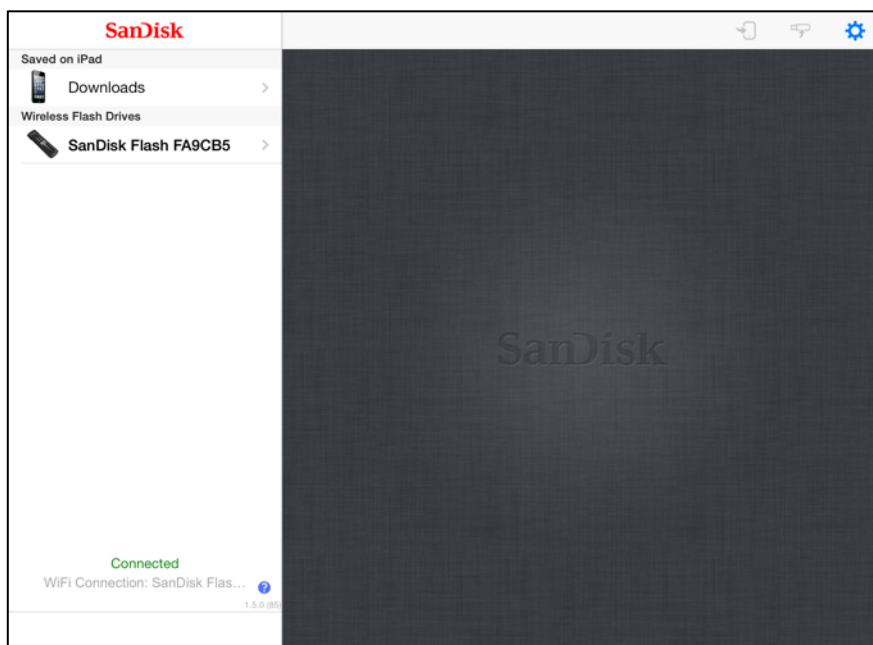
- You can download the Wireless Flash Drive app and connect to the Drive via Wi-Fi.
- You can access the Drive without installing the Wireless Drive app via a web browser.

Connecting via Wi-Fi

1. In your mobile device Wi-Fi settings, select the Wireless Drive network from the list of available Wi-Fi networks. It appears as **SanDisk Flash XXXXXX** (in the example below, SanDisk Flash ABCDEF):



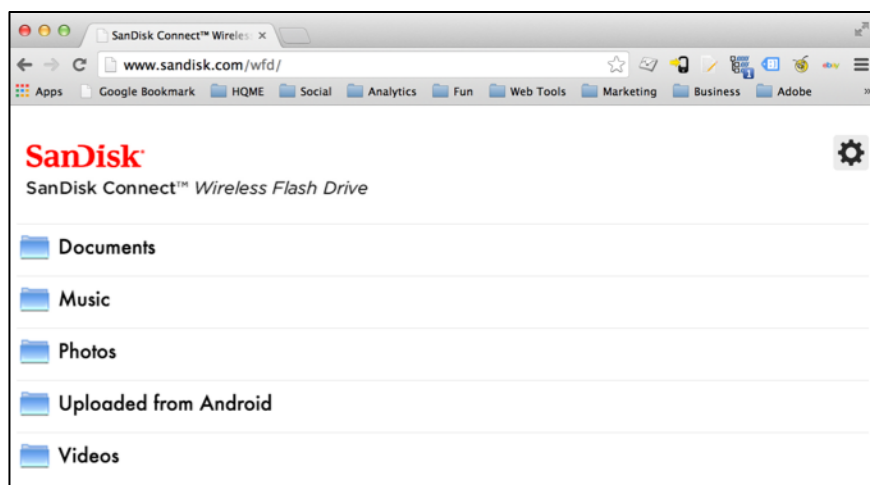
2. Launch the app:



Accessing the Drive without the App

You can connect to the Wireless Drive Wi-Fi network on your mobile device, PC, or Mac without downloading the Wireless Flash Drive app, then access the Wireless Drive using a web browser.

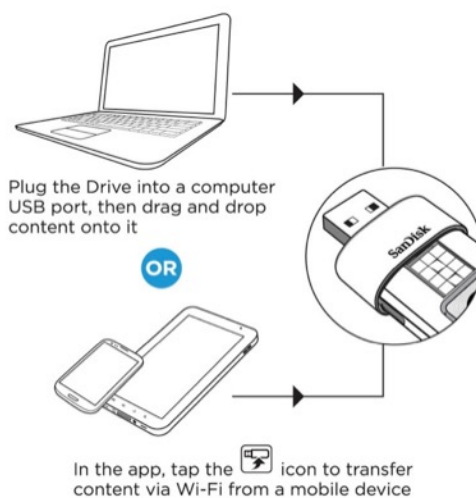
1. In your mobile device Wi-Fi settings, connect to the Wireless Drive Wi-Fi network. It appears in the list of available networks as **SanDisk Flash XXXXXX** (for example, SanDisk Flash 123456).
2. Launch an Internet browser and go to www.sandisk.com/wfd to connect to the Wireless Drive:



Loading Content on the Wireless Drive

You can load content in two ways:

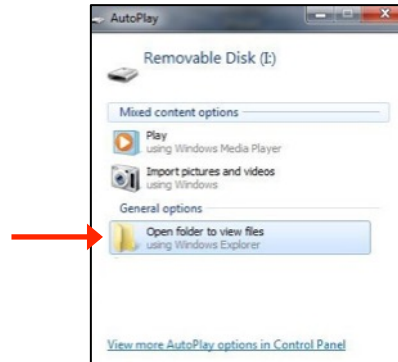
- Plug your Wireless Drive into your computer, then drag and drop content onto it.
- Transfer content via Wi-Fi from a mobile device to your Wireless Drive.



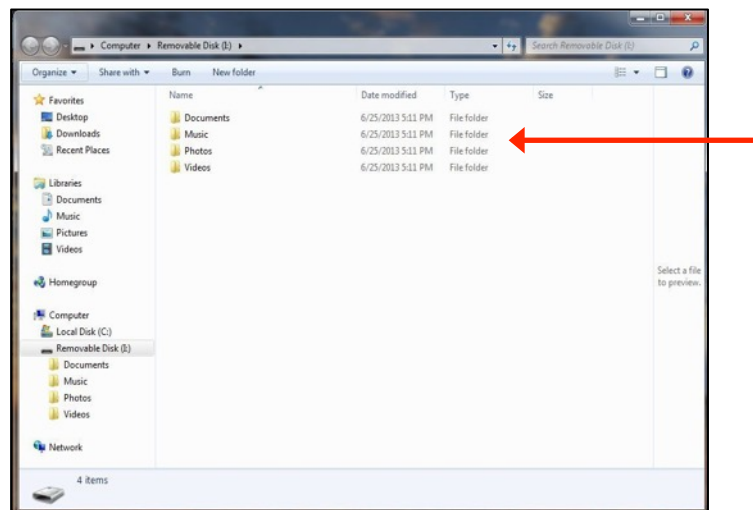
From a PC

You can transfer content between your Wireless Drive and your computer using a USB connection.

1. Plug your Wireless Drive into your computer USB port.
2. In the **AutoPlay** window, click **Open folder to view files**:



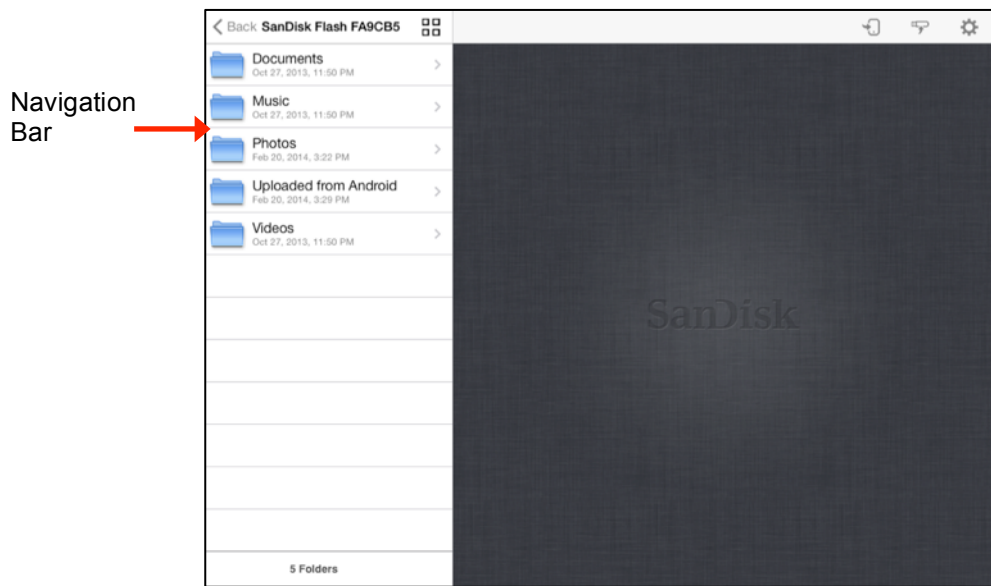
3. Drag and drop music, videos, photos, and documents from your computer into the Wireless Drive window. You can drop your files anywhere on the Wireless Drive or you can create folders and add content to them; for example, the **Music**, **Photos**, **Videos**, and **Documents** folders in the window below:




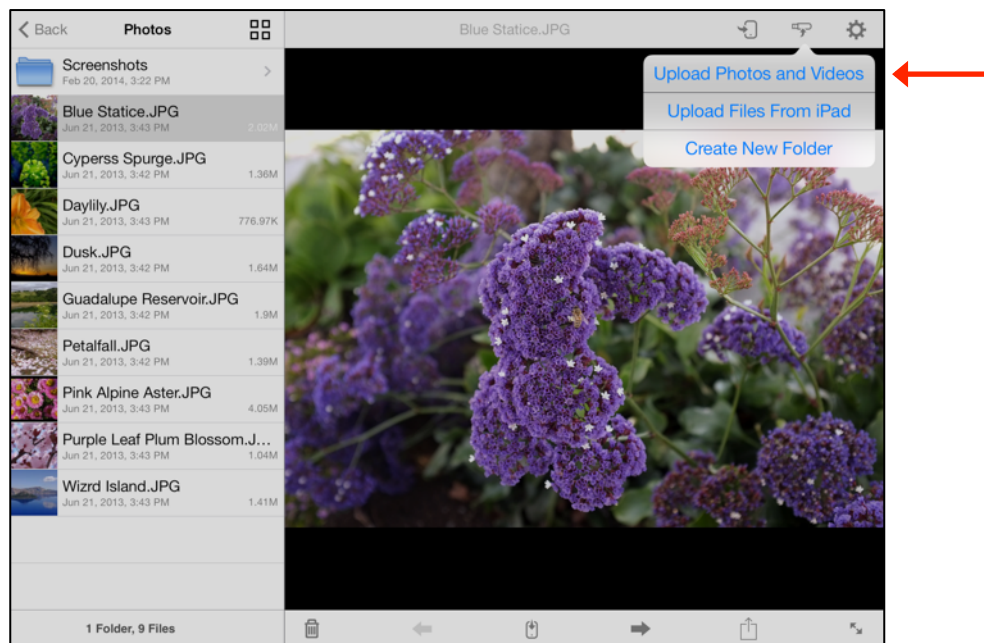
You can also drag content from the Wireless Drive window onto your computer to move files between your mobile devices and your computer.

From a Mobile Device

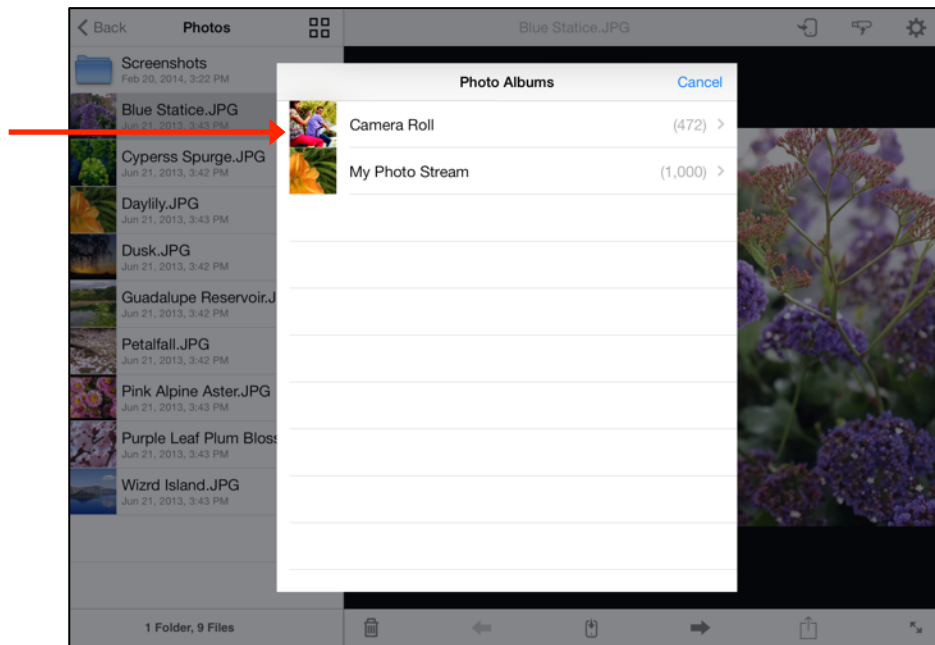
1. In your mobile device Wi-Fi settings, connect to the Wireless Drive Wi-Fi network.
2. In the Navigation Bar on the left side of the Wireless Drive main screen, navigate to the location at which you want to upload content:



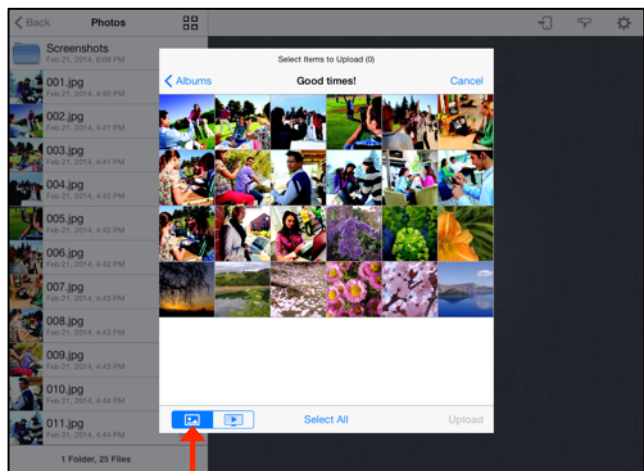
3. Tap the Upload icon  to display the Upload options, then tap **Upload Photos and Videos** to display the content available for upload from this mobile device:



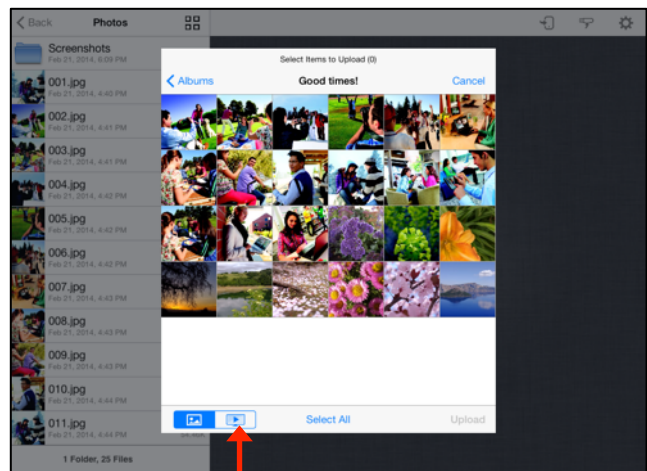
4. Select the Album whose content you want to upload to the Wireless Drive:



5. You can use the filter controls to display only photos or only videos for easier file selection:

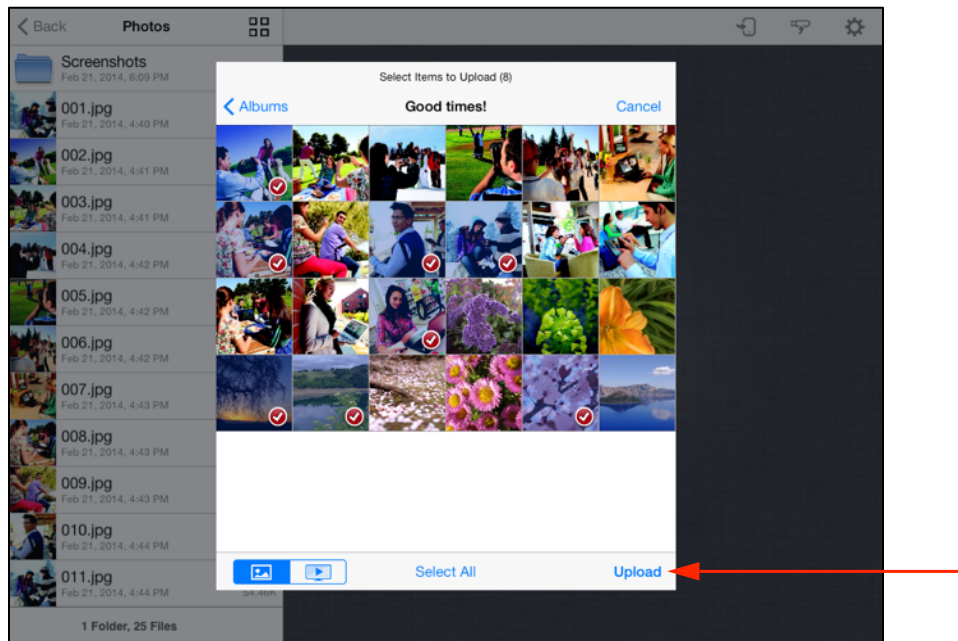


Tap to display only photos

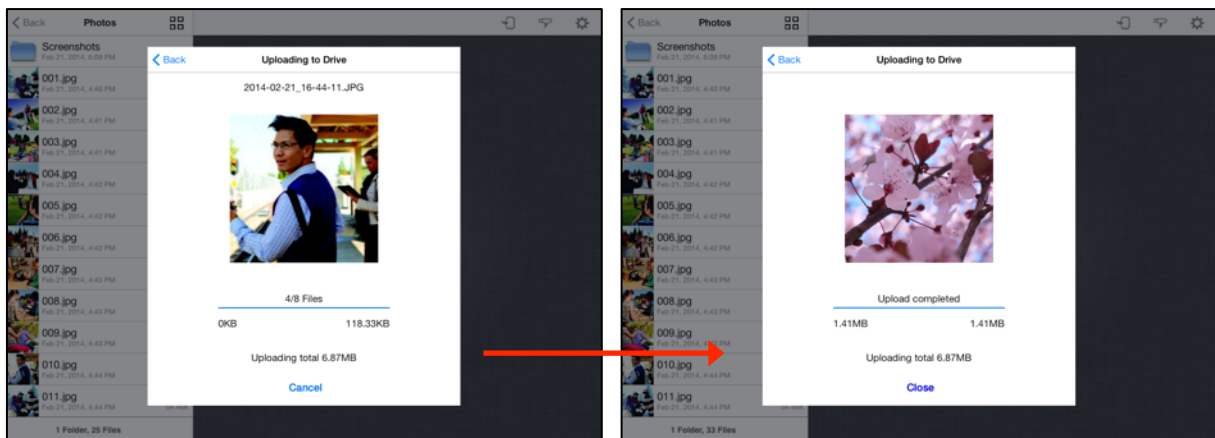


Tap to display only videos

6. Tap on thumbnails to select them for upload. (You can tap **Select All** to select photos at once.) Then tap **Upload**:



You see the progress of the upload and receive confirmation when it's complete:



The files are uploaded to the location displayed in the Navigation Bar.

Note: For more detailed information on using photo, music, and video files, see Chapter 3, *Working with Content*.

3. Working with Files

Wireless Drive Application Overview

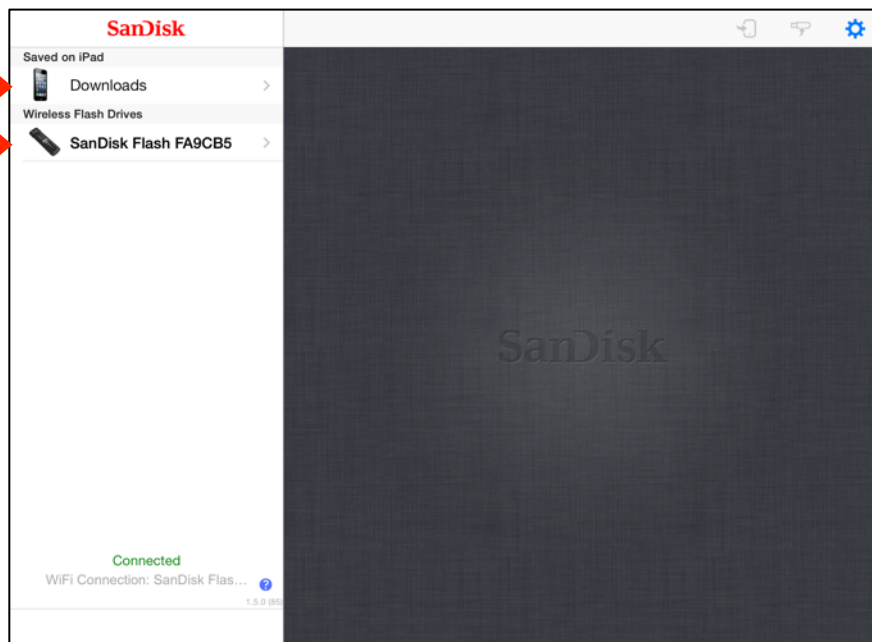
The Wireless Drive application connects you to content on both your Drive and your mobile device. You can view, share, and manage videos, music, photos, and documents.

Accessing Files through the Wireless Drive App

The Wireless Drive app start screen provides access to files stored on both your Wireless Flash Drive and your mobile device. It also contains a Help link:

Files previously downloaded from a Wireless Drive to this device →

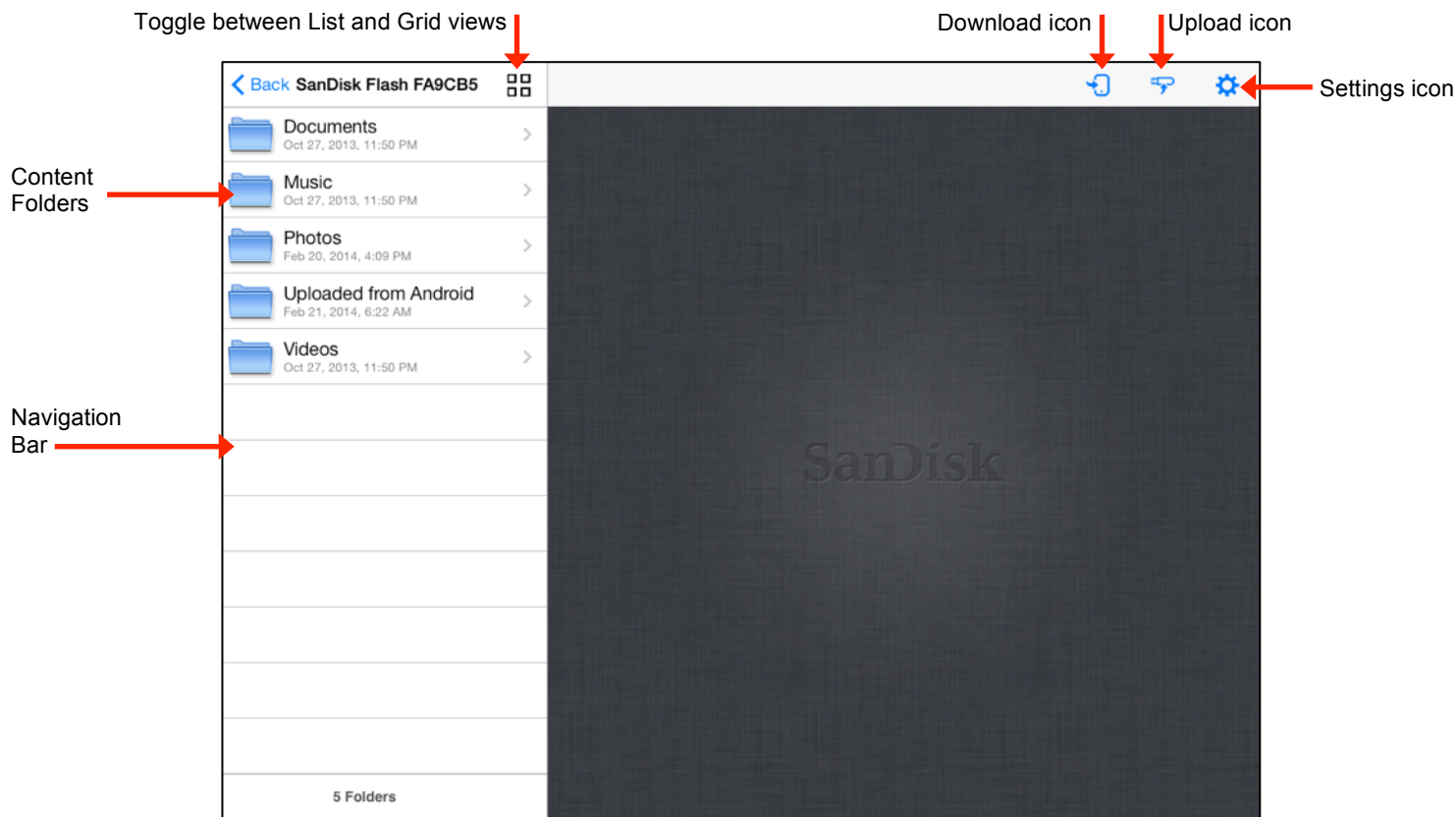
Files stored on the Wireless Drive →



← Settings

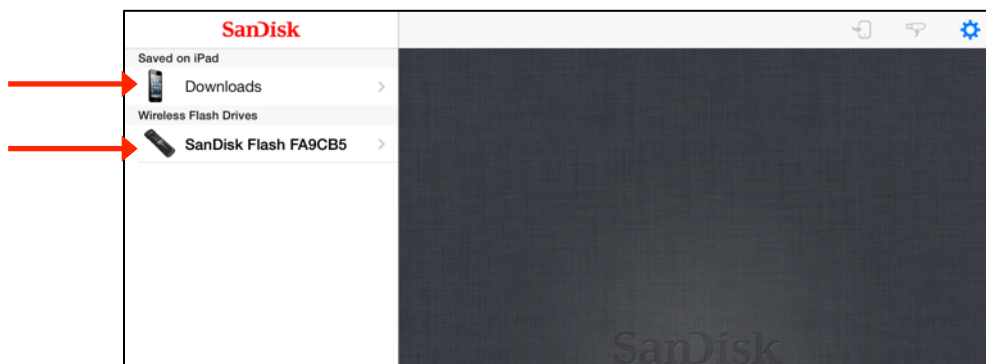
Using Wireless Drive Main Screen

Once you've selected your Wireless Drive (in the examples here, SanDisk Flash 123456) in the Navigation Bar, you can access the files stored on your Drive and the app icons you use to move around in the app:



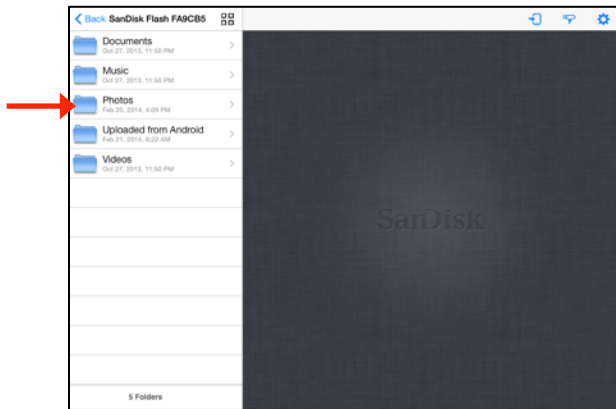
Viewing Photos

1. In the Navigation Bar on the Wireless Drive opening screen, select either the **Downloads** folder under **Saved on iPad** (or **Saved on iPhone** or **Saved on iPod touch**) or your Wireless Drive under **Wireless Flash Drives**:

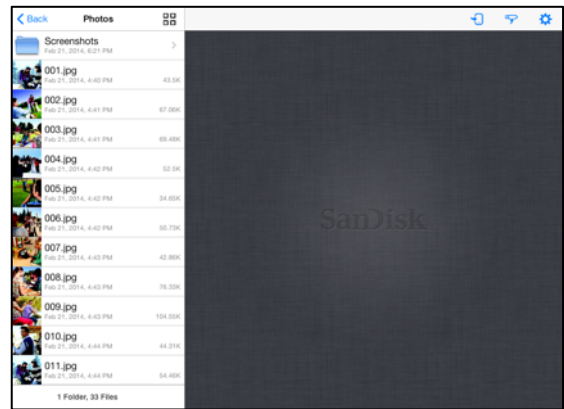


2. Navigate to the photo you want to view:

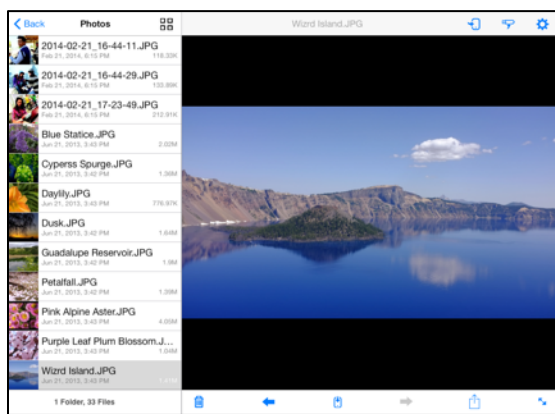
a. In the Navigation Bar, tap **Photos**.



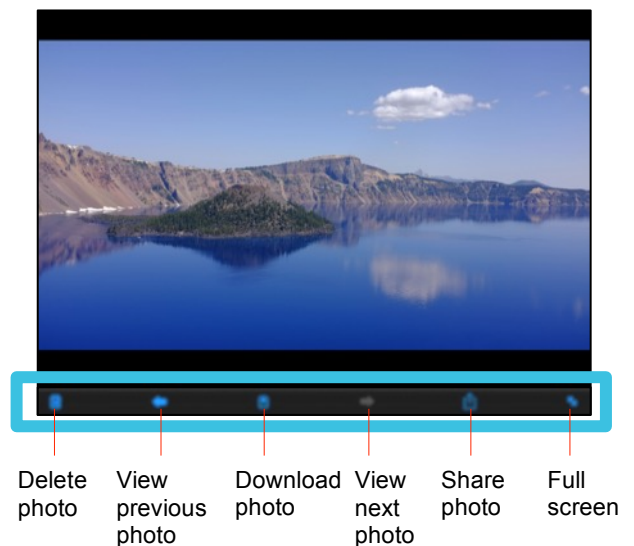
b. Find the photo you want to view.



c. Tap the photo thumbnail in the Navigation Bar to open the photo.



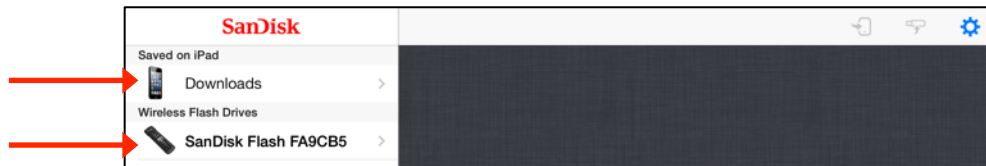
d. Tap the photo to display the photo controls.



Note: The Photos folder used here is simply an example of one way to organize pictures on your Drive. Photos can be stored anywhere you like on the Drive.

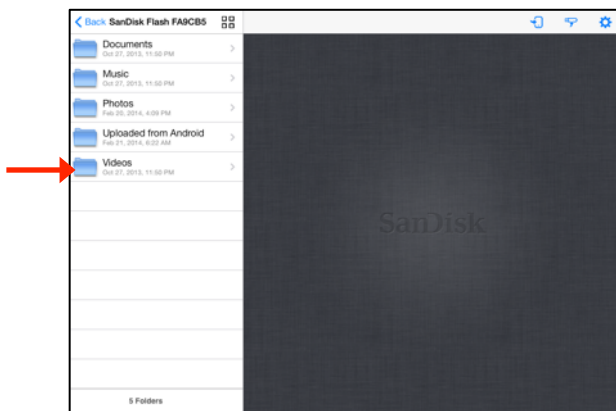
Streaming Videos

1. In the Navigation Bar on the Wireless Drive opening screen, select either the **Downloads** folder under **Saved on iPad** (or **Saved on iPhone** or **Saved on iPod touch**) or your Wireless Drive under **Wireless Flash Drives**:

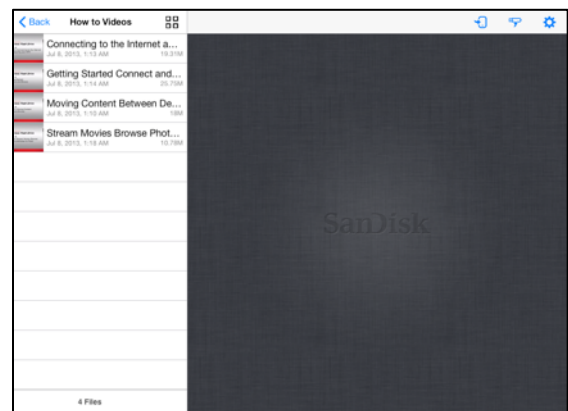


2. Navigate to the video you want to stream:

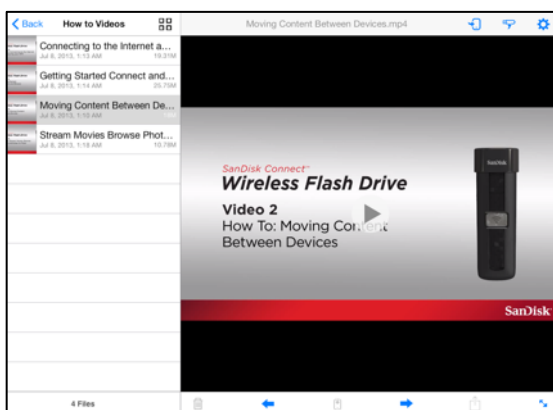
a. In the Navigation Bar, tap **Videos**.



b. Find the video you want to stream.



c. Tap the video thumbnail in the Navigation Bar to open the video.



d. Tap the Play icon to stream the video; tap the video itself to display the Video controls.



- Delete video
- View previous video
- Download video
- View next video
- Share video
- Full screen

Note: The Videos folder used here is simply an example of one way to organize videos on your Drive. Videos can be stored anywhere you like on the Drive.

Using the Wireless Flash Drive with iTunes

You can use the Wireless Flash Drive app to play music, movies, and TV shows you've purchased on iTunes.

To play iTunes content,

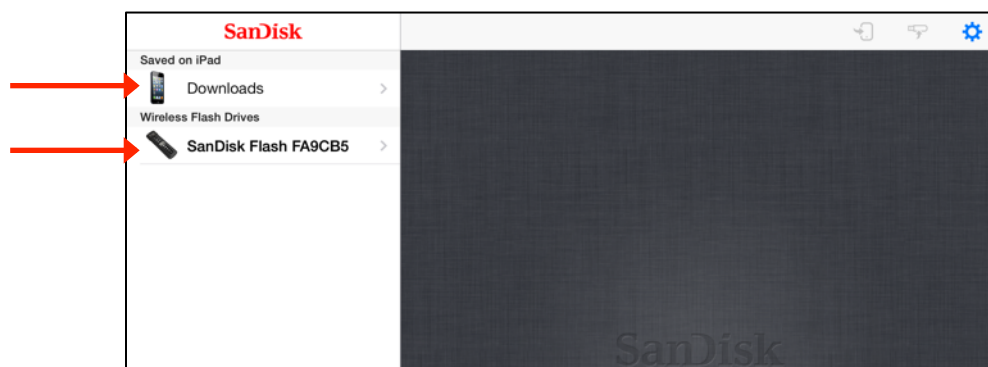
1. Make sure your mobile device is synced with iTunes:
 - On your mobile device, launch the iTunes app and navigate to **More > Purchased > Music/Movies/TV Shows**. If you see your content, your mobile device is synced with iTunes.

Note: Up to 5 devices can be synced with the Apple ID that owns the purchased content. iTunes is for legal or rightholder-authorized copying only. Don't steal music.

2. Drag and drop the music, movie, and TV show files from the iTunes library on your PC or Mac to your Wireless Drive.
 - Music plays on the mobile device music player.
 - Movies and TV shows play in Safari.

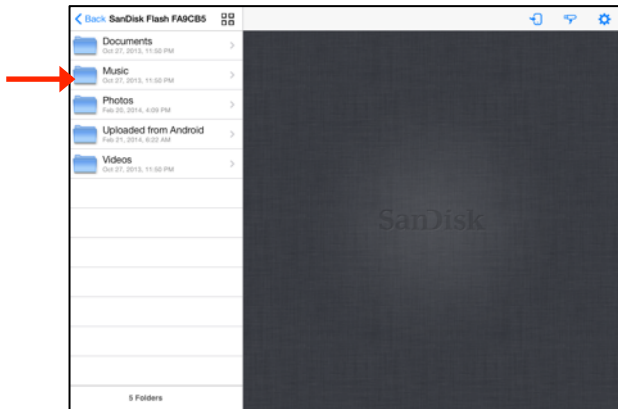
Playing Music

1. In the Navigation Bar on the Wireless Drive opening screen, select either the **Downloads** folder under **Saved on iPad** (or **Saved on iPhone** or **Saved on iPod touch**) or your Wireless Drive under **Wireless Flash Drives**

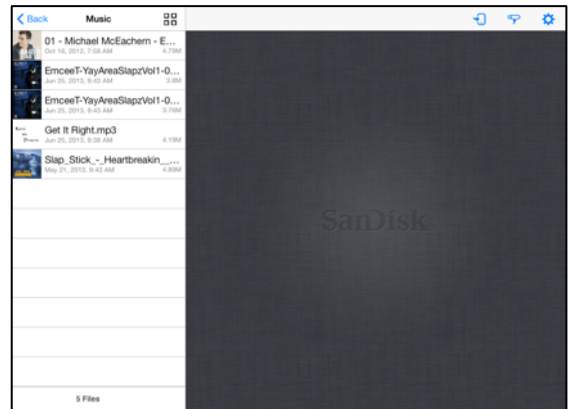


2. Navigate to the music you want to stream:

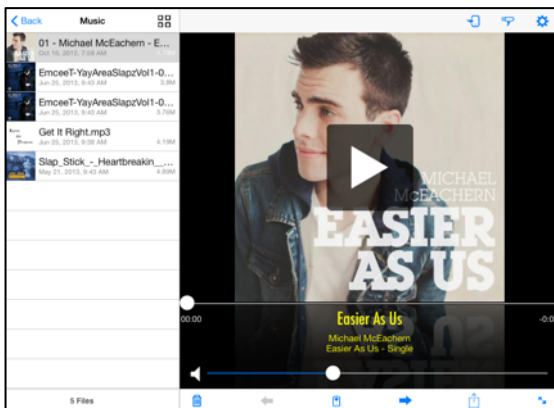
a. In the Navigation Bar, tap **Music**.



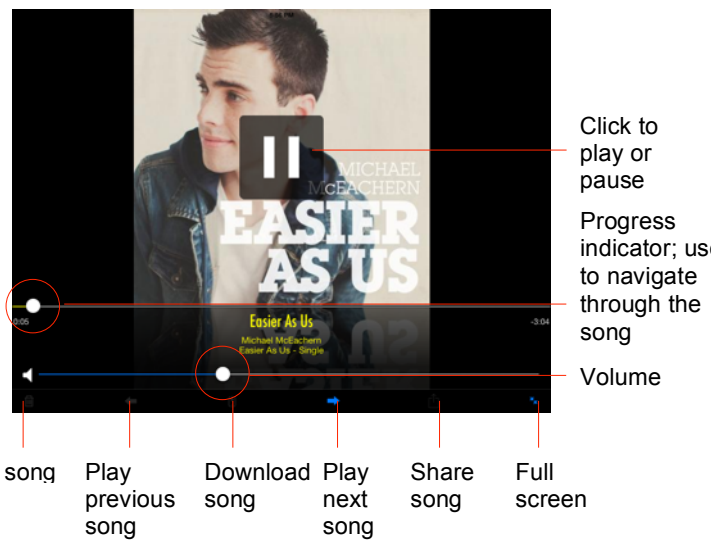
b. Find the song you want to play.



c. Tap the song thumbnail in the Navigation Bar to open the song.



d. Tap the Play icon on the music screen to play the song and display the Song controls.

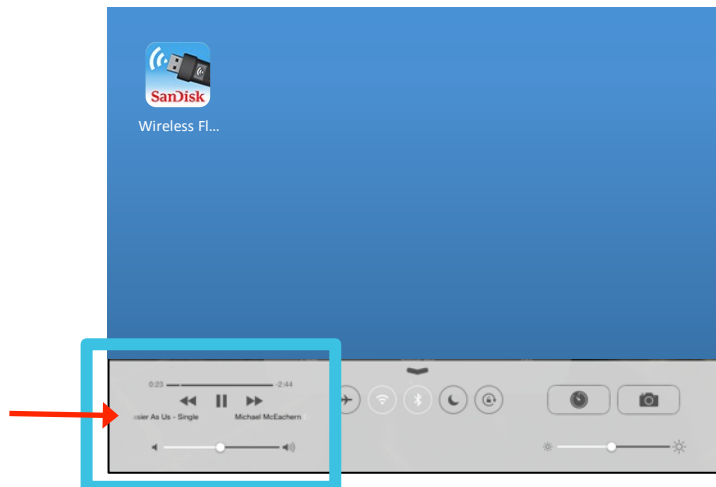


3. Swipe from right to left across a song screen to return to a previous song or left to right to move to the next song.

Controlling Music from Outside the Music Play Screen

You can use the Wireless Drive app to play music loaded on either your Wireless Drive or in the **Saved on iPad** folder on your mobile device. You can play the music in the background while you use other Wireless Drive app features or exit the app to use your mobile device. You always have access to the currently playing song whether you're still inside the Wireless Drive app or outside it on your mobile device.

1. Start the music.
2. Leave the music Play screen and use other app features or leave the app and use your mobile device for other purposes while the music continues to play in the background.
3. To display the audio controls, swipe from the bottom of the screen to activate the iOS Control Center.



4. Tap the name of the song in the Control Center to open the Wireless Drive app Play screen and regain control of the music.

Moving Files

You can move files in three ways:


- Download files from your Wireless Drive to a mobile device.
- Upload files to your Wireless Drive from a mobile device.
- Share files with others directly from the Wireless Drive mobile app.

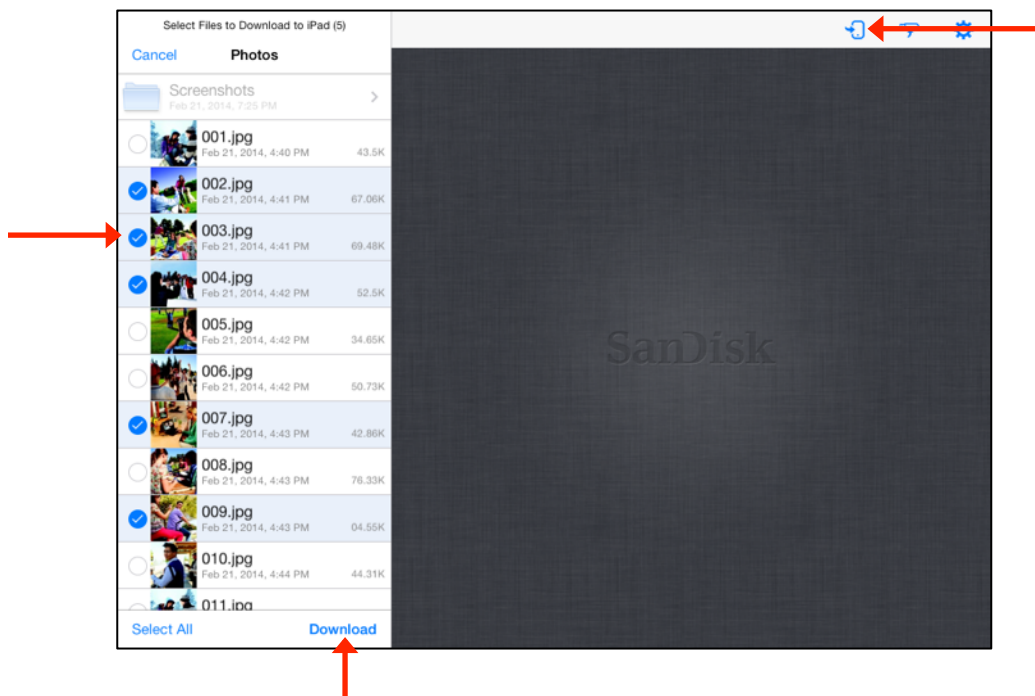
In the Wireless Drive app, you use the Navigation Bar on the left side of the screen either to select files to be downloaded or to select the destination at which files will be uploaded. You can use existing albums or folders as upload destinations, or you can create a new folder during the upload process.

Downloading Files

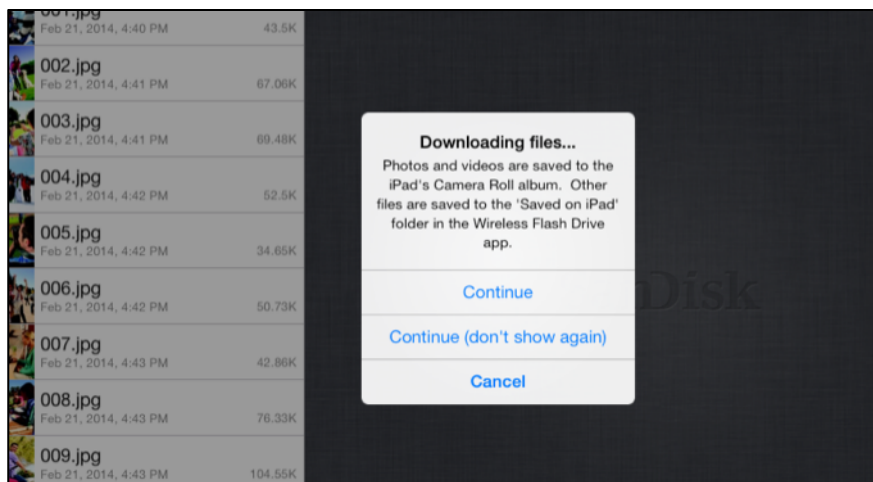
You can download files from your Wireless Drive to a mobile device by selecting them in the Navigation Bar or you can download a single file while you're viewing it.

To download files from the Navigation Bar,

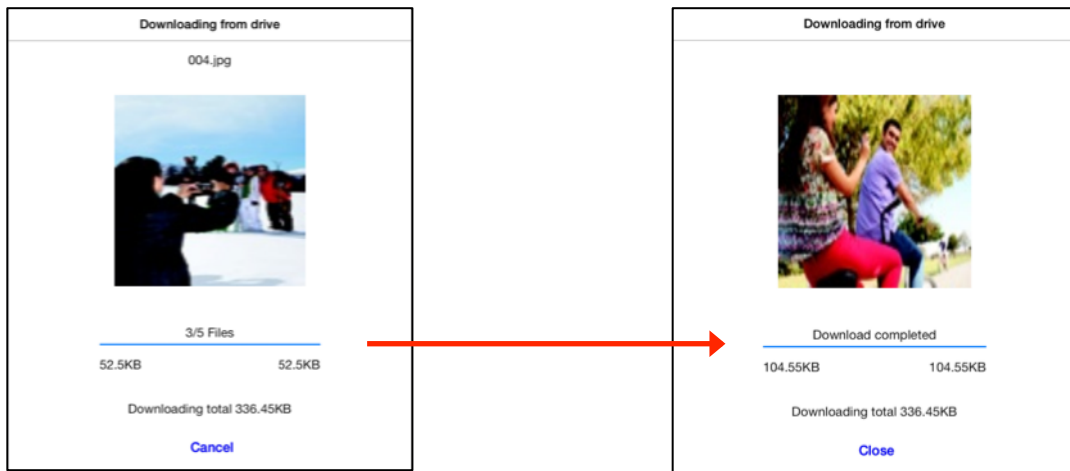
1. In the Navigation Bar, navigate to the content you want to download to the mobile device, tap the Download icon , select the files to download, and tap **Download**:




2. A **Downloading files** window tells you where your downloaded content will be located. Depending on whether you want to see this message each time you download content, tap the appropriate option to continue with the download:

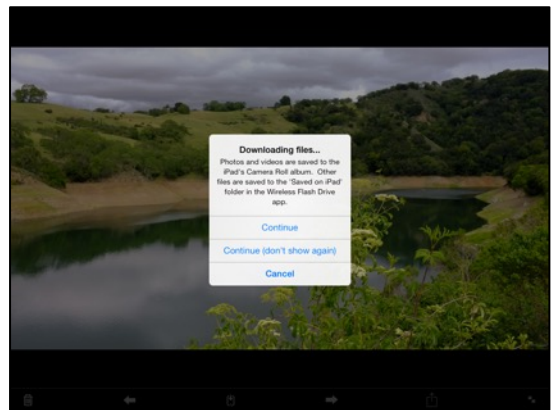
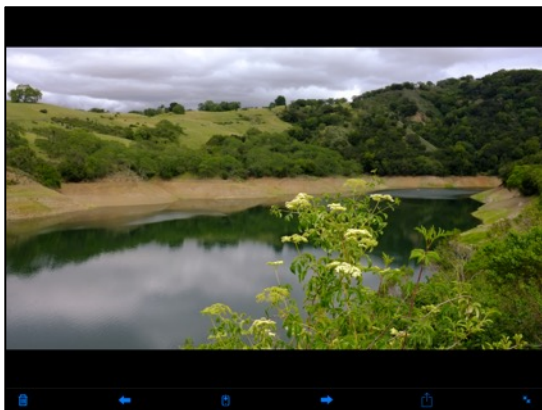


3. You're informed of the progress of the download and are informed when it's successfully completed:



To download a file while you're viewing it,

- On the photo View screen, tap the Download icon , then select an option in the **Downloading files** window:




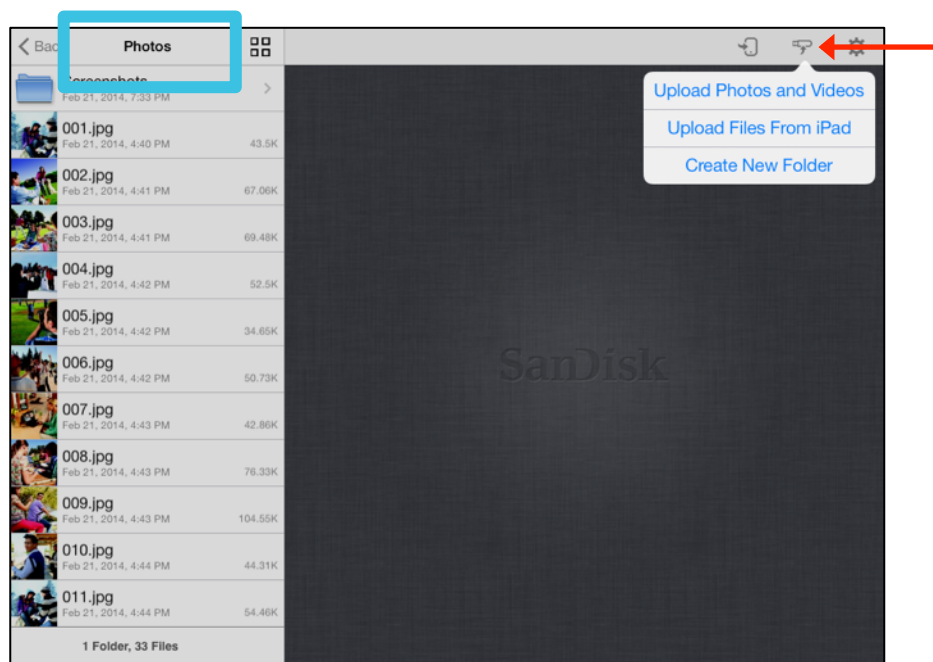
Uploading Files

When you upload content from a mobile device to your Wireless Drive, you can choose an existing destination (folder or album) to upload to or you can create a new folder on the Drive and upload content into it.

Displaying the Upload Options

To upload content from a mobile device to your Wireless Drive,

- In the Navigation Bar, open the destination on the Wireless Drive at which you want to upload content from a mobile device. Then tap the Upload icon  to display the Upload options:




Upload Options

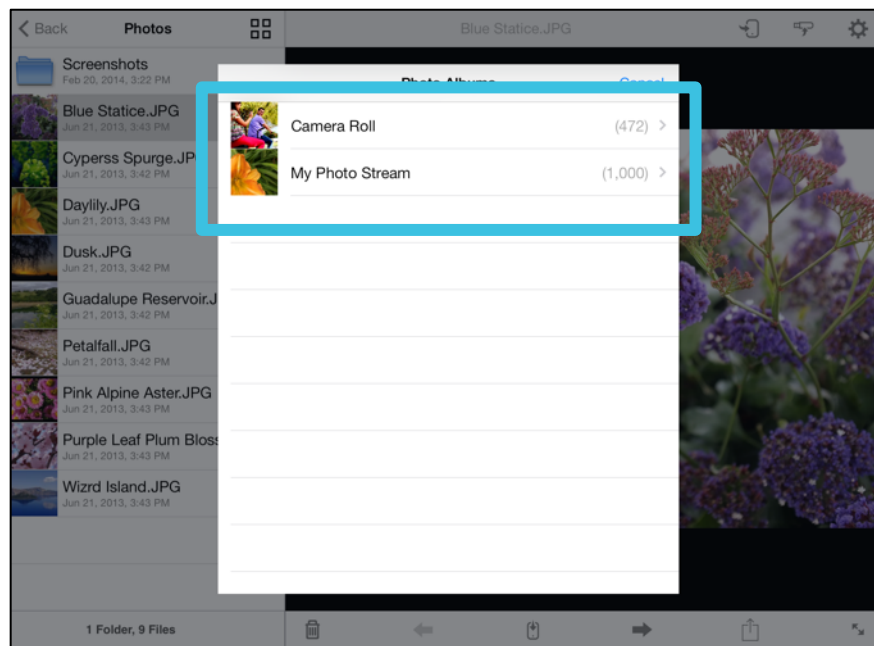
- **Upload Photos and Videos:** Select the album on your mobile device containing the files to be uploaded.
- **Upload Files from iPad (or Upload Files from iPhone or Upload Files from iPod touch):** Select files to upload.
- **Create New Folder:** Create a new folder, then use it as the destination for the files to be uploaded.

Uploading Photos and Videos

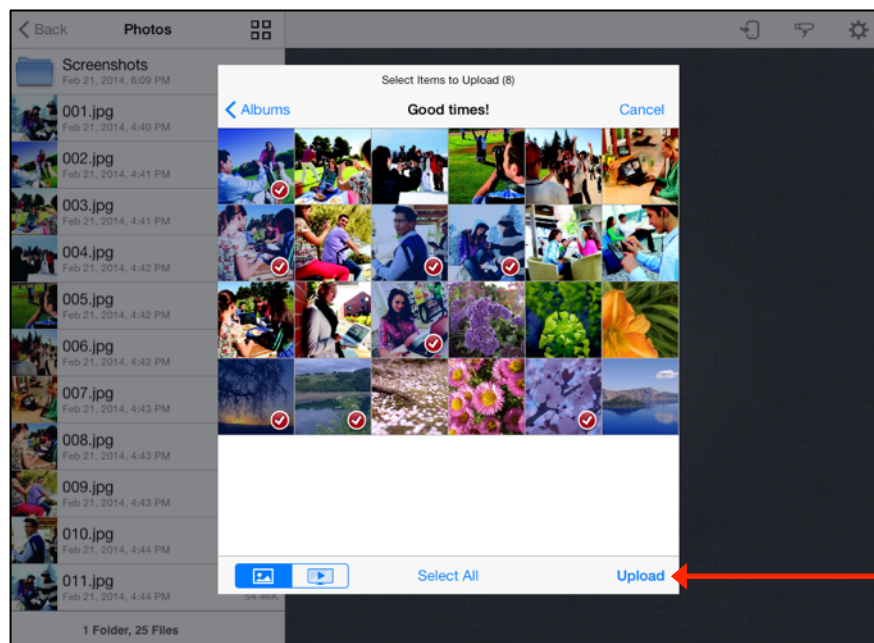
To upload photos and videos from your mobile device to the Drive,

1. In the Navigation Bar, select the destination folder for the files to be uploaded.
2. Tap the Upload icon  to display the Upload options.

3. In the Upload options, tap **Upload Photos and Videos**, then tap the album containing the files to be uploaded:



4. Select the files for upload and tap **Upload**:





The files are uploaded to the chosen location on the Wireless Drive.

Backing Up All Your Photos and Video From Your Camera Roll

You can back up all the photos and videos from your camera roll to the Wireless Flash Drive. This can be handy if you are running out of memory on your mobile device or just as safety measure for the case your device is lost or stolen.

It is recommended to backup all your photos and videos to the Wireless Flash Drive. The first backup may take a couple of hours (depending on the number of GBs you will be backing up), so it is recommended running it overnight.

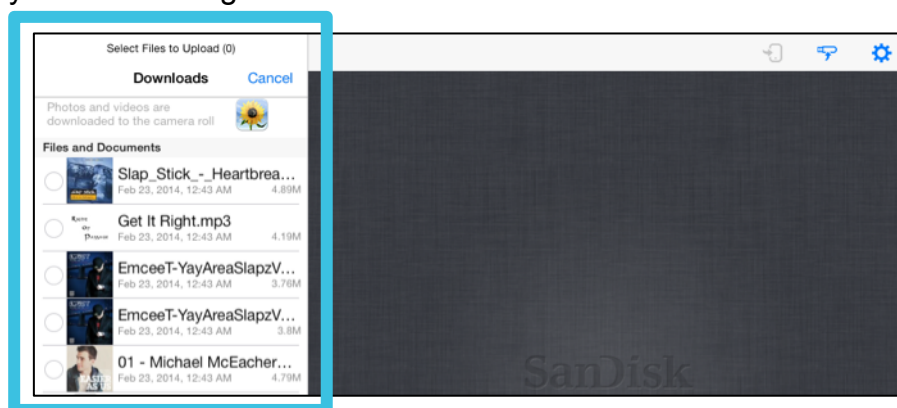
1. Turn your wireless flash drive on and plug both your mobile device and your drive into a power source.
2. Make sure you are connected to the Wireless Flash Drive.
3. Tap the “upload to the drive” icon .
4. Select Create New Folder and give it a memorable name such as iPhone Backup so you will always backup to this folder (this is important as backup will be incremental so if done to a different folder – it will upload all your files again).
5. Select the newly created folder and tap the “upload to the drive” icon .
6. Select “Upload Photos and Videos” -> Camera Roll
7. Tap Select All at the bottom
8. Tap Upload

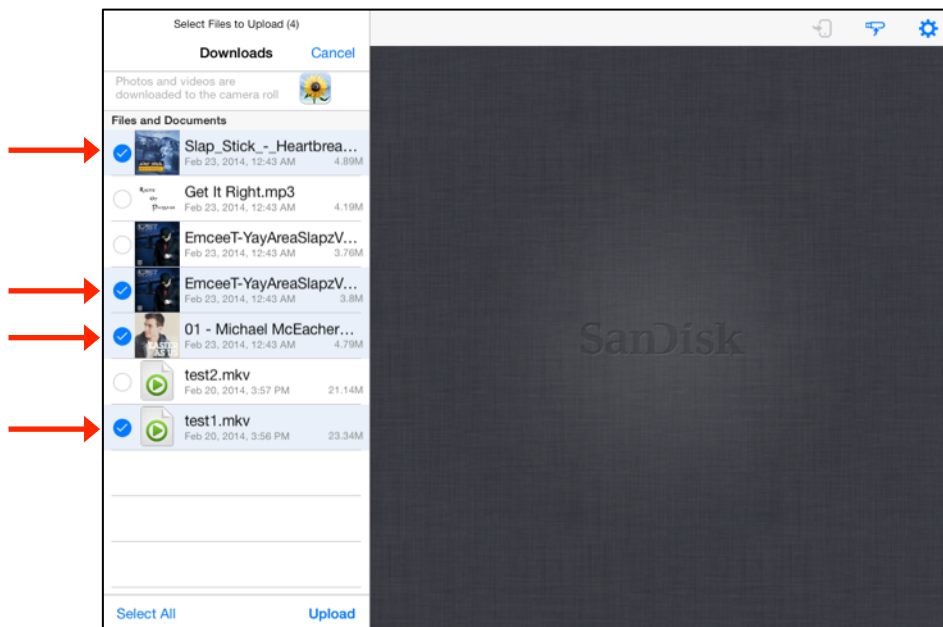
Repeat these steps (excluding the folder creation) frequently to make sure all your Photos and Videos are safe. Please note the app will automatically skip the photos and videos you’ve already backed up.

Uploading Files from Your iPhone, iPad, or iPod touch

To upload files from your mobile device to your Wireless Drive,

1. In the Navigation Bar, select the destination folder for the uploaded files.
2. In the Upload options, tap **Upload Files from iPad** (or **Upload Files from iPhone** or **Upload Files from iPod touch**), then select the folder containing the files to be uploaded. The files available for upload from your mobile device are now displayed in the Navigation Bar:



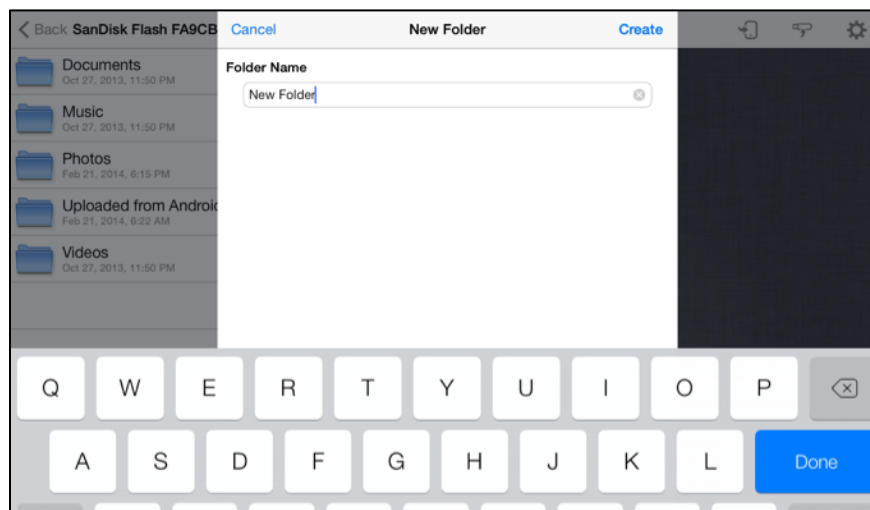
3. Select the files to be uploaded, then tap **Upload**:

An upload window keeps you apprised of the progress of the upload. When the upload is complete, the Navigation Bar again displays the destination folder you selected for the upload; it now contains the uploaded files.

Creating a New Folder

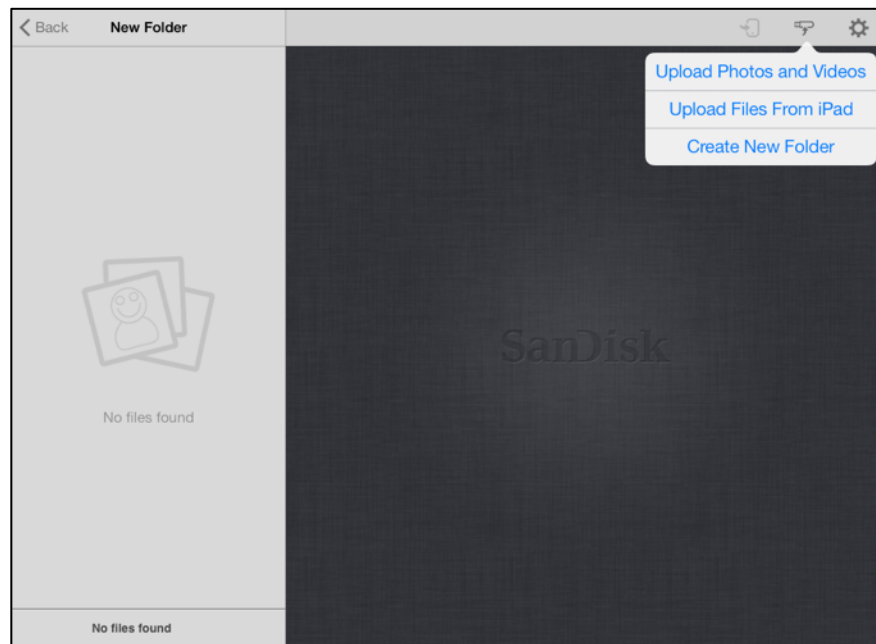
To create a new folder and then upload files into it,

1. In the Navigation Bar, navigate to the destination for the new folder.
2. In the Upload options, tap **Create New Folder**, use the keyboard to enter a name for the folder, and tap **Create**:



The new folder (currently empty) is displayed in the Navigation Bar as your destination folder.

3. Tap the Upload icon once again and select **Upload Photos and Videos** or **Upload Files from iPad** to upload files to the new folder:



Sharing Your Files

In addition to handing someone your Wireless Drive to plug into a computer USB port, you can share content stored on your Drive in two ways:

- Allow others Wi-Fi access to your Wireless Drive so they can use their mobile devices to connect to the content on your Drive.
- Send content to others via email, social media, messaging, or Bluetooth. The methods available vary depending upon the features provided on your mobile device.

Allowing Access to your Wireless Drive

You can allow others to connect directly to your Wireless Drive Wi-Fi network so they can view your content and download it to their mobile devices.

People can share your files in two ways:

- They can install the free Wireless Drive app on their mobile devices. They do not need to own their own Wireless Drives.
- They can connect to the Drive's Wi-Fi network and use a web browser to access the Drive content at www.sandisk.com/wfd.

Suppose you want to share your files with a friend using the Wireless Drive app:

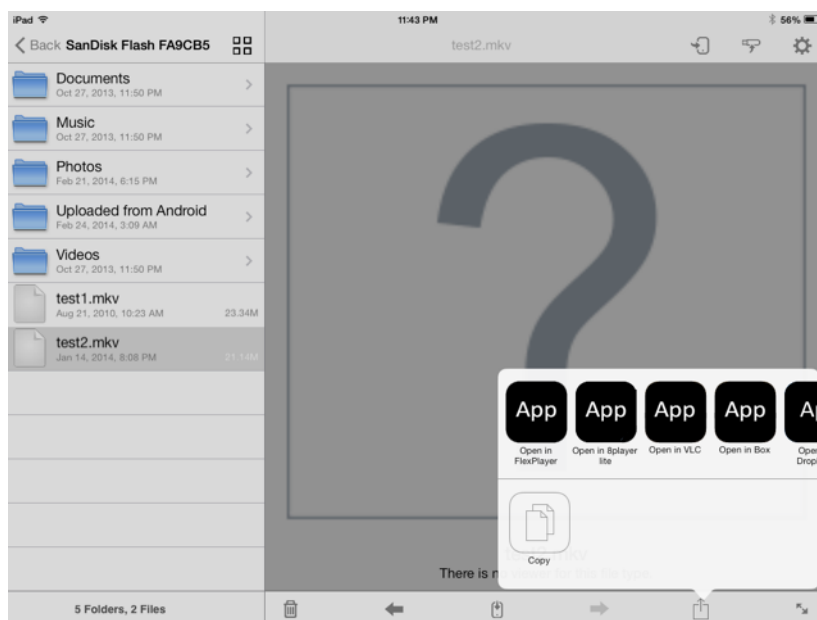
1. Make sure she's downloaded the Wireless Drive app from her mobile device application store.
2. Turn on your Wireless Drive and place it within range (150 feet/45 meters) of your friend.
3. Tell her the network name of your Drive so she can find it in the list of available networks in Wi-Fi settings on her mobile device.
4. If your Drive is password-protected, give her the password.

When your friend's mobile device has connected to your Wireless Drive, she can open the Wireless Drive app on her mobile device and see your main screen. Now she can view your content and download it to her mobile device.

Sharing Files with Other Apps (Open In)

You can open content directly from the Wireless Flash Drive app to other apps via the "Open in..." feature on your Apple device.


In instances when you are prompted with "There is no viewer for this file type." or wish to view the content on another app, you can click on the "Share" icon to drop down a menu of options. You will see a list of available apps on your phone that you can then select to view the file such as movies, photos and music.

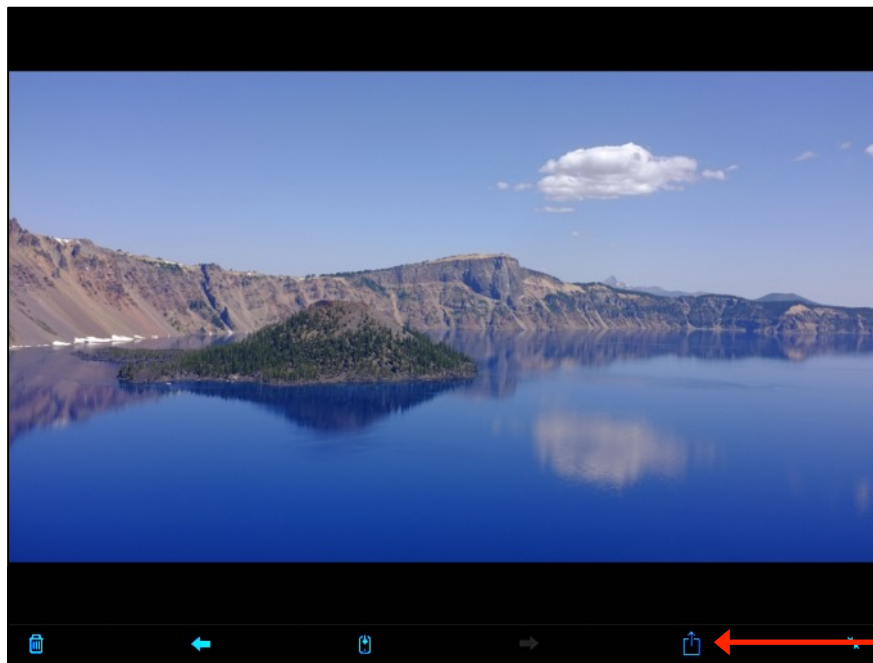


Sending Files to Others

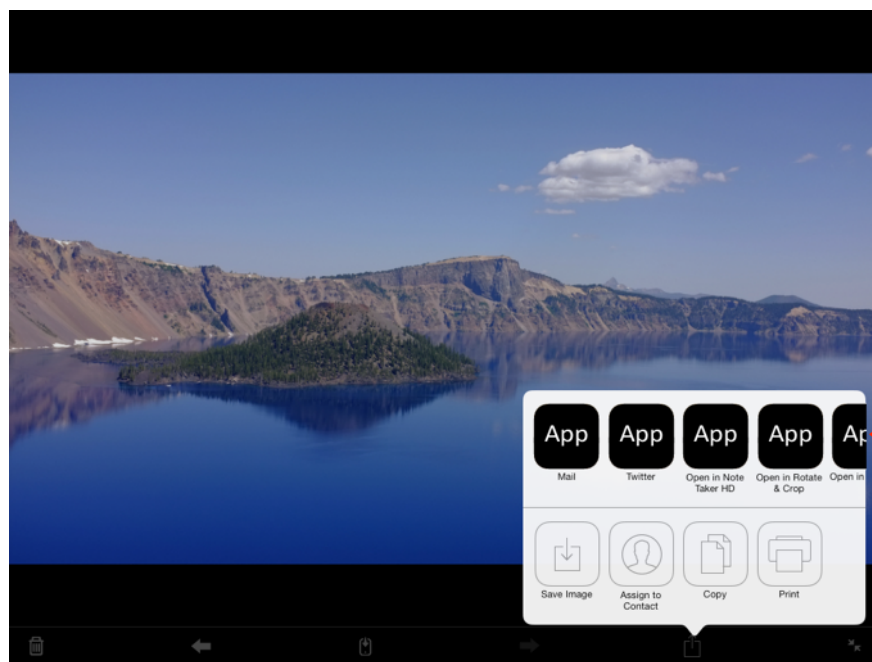
You can share content by sending it to others in a variety of ways: email, social media, messaging, and Bluetooth, to name a few. The methods available vary depending upon the features available on your mobile device.

The sharing process is the same no matter what type of content you're sharing. The example below shows how to share a photo.

1. Open the photo you want to share, tap it to display the Photo options, and tap the Send icon :




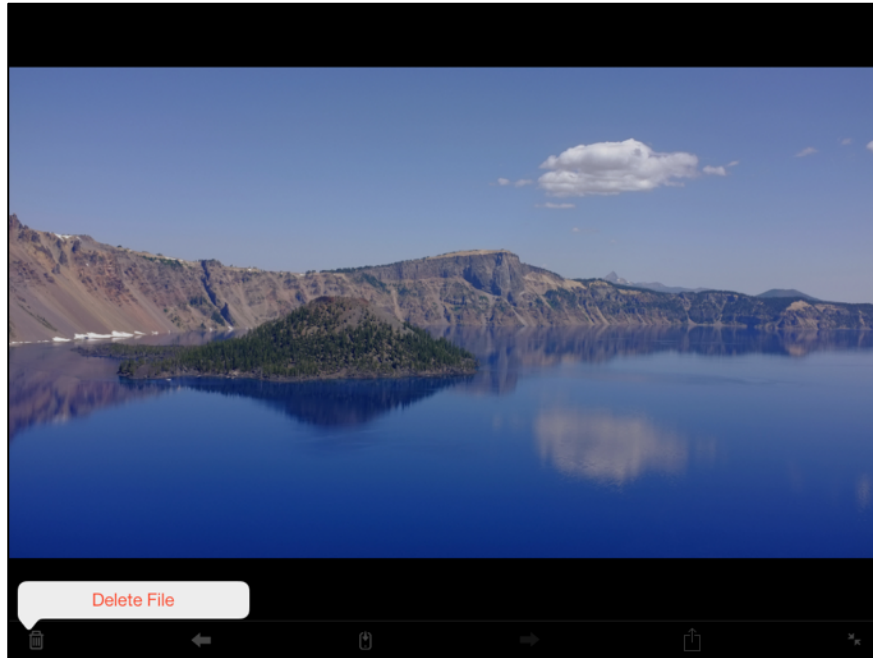
2. Select a method to share your photo and provide the required information. (The options available on your mobile device vary.)



Deleting Files and Folders

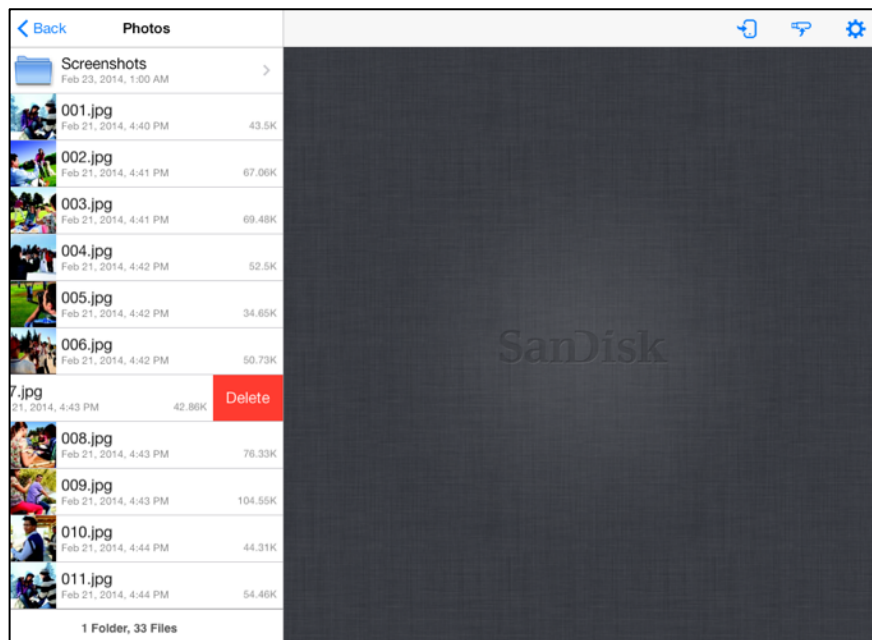
To delete a file you're viewing,

1. Open the file you want to delete.
2. Tap the Delete icon , then tap **Delete File**:



To delete a file or a folder in the Navigation Bar,

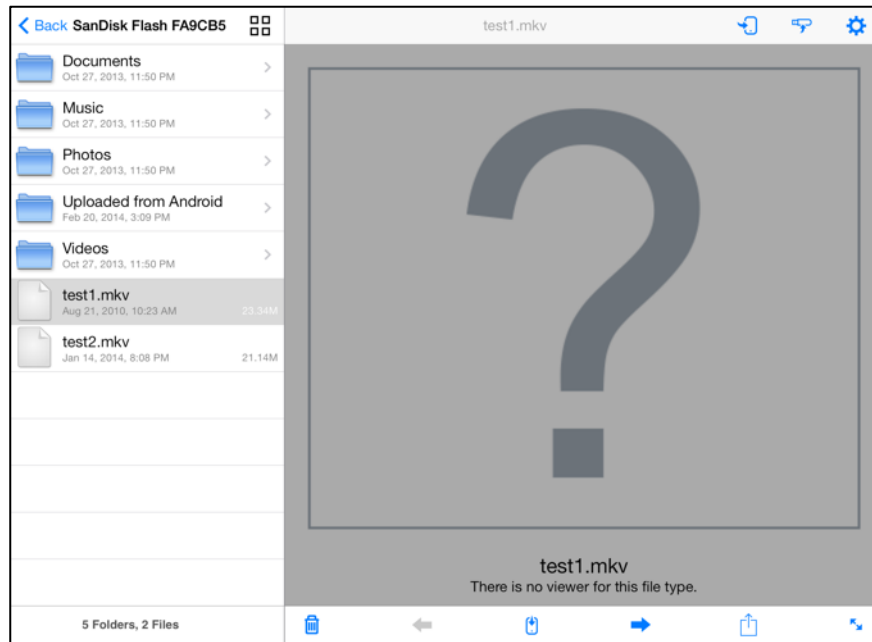
1. Swipe to the right on the item in the Navigation Bar:



2. Tap the **Delete** button.

Unsupported File Formats

The Wireless Drive app can open all file formats that are supported by your mobile device. If you try to open an unsupported file format, a message informs you that this file type is not supported:



4. Managing the Wireless Drive

Updating the Firmware

You are notified in the Wireless Flash Drive app when a Firmware update is available and asked if you want to install it. If you tap Yes, the app automatically uploads and installs the update.

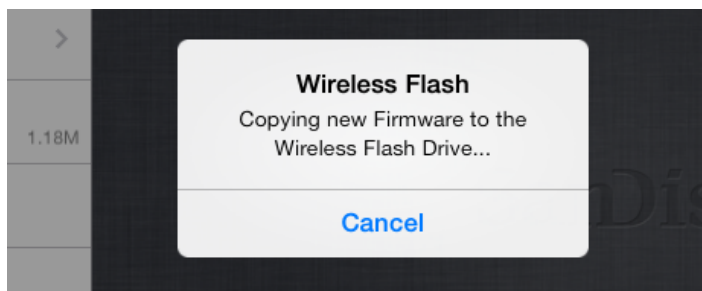
1. Tap the App Store icon:
2. Install the update.
3. Connect your mobile device to the Wireless Flash Drive Wi-Fi network and launch the app.

A popup message prompts you to update the Firmware on the Drive:

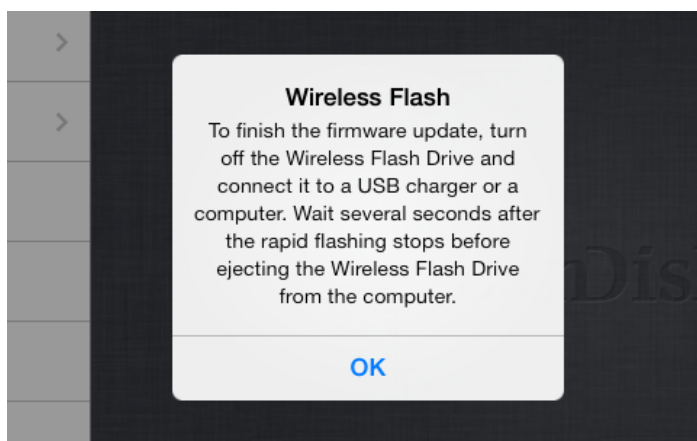


4. Tap **OK**.

The new Firmware is copied to the Drive:



- 5. Follow the on-screen instructions to turn off the Drive and connect it to a USB charger or a computer:



Both the blue and the amber LEDs blink rapidly.

- 6. Wait for several seconds after the rapid flashing stops before ejecting the Drive from the charger or computer.
- 7. After ejecting the Drive, turn it back on:

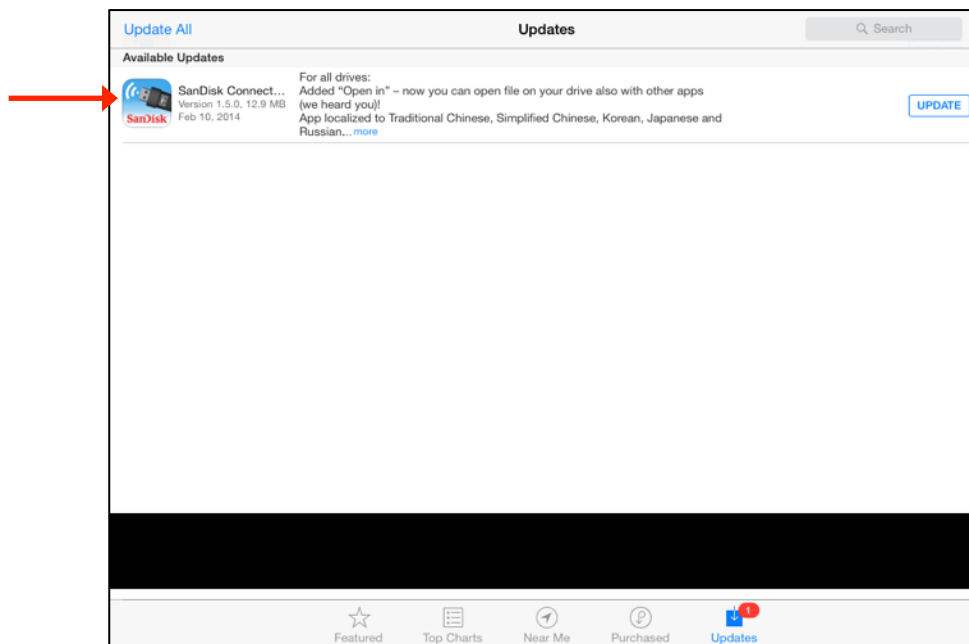


Note: With every app update, we release two firmware versions. The app identifies which drive version it is communicating with (16GB/32GB or 64GB) and assures the proper firmware will be loaded on your Drive when following the process above.

Updating the App

You update the Wireless Flash Drive app the same way you update any other app on your iPad, iPhone, or iPod touch.


1. Tap the App Store icon:
2. In the App Store, tap the Wireless Flash Drive app icon:

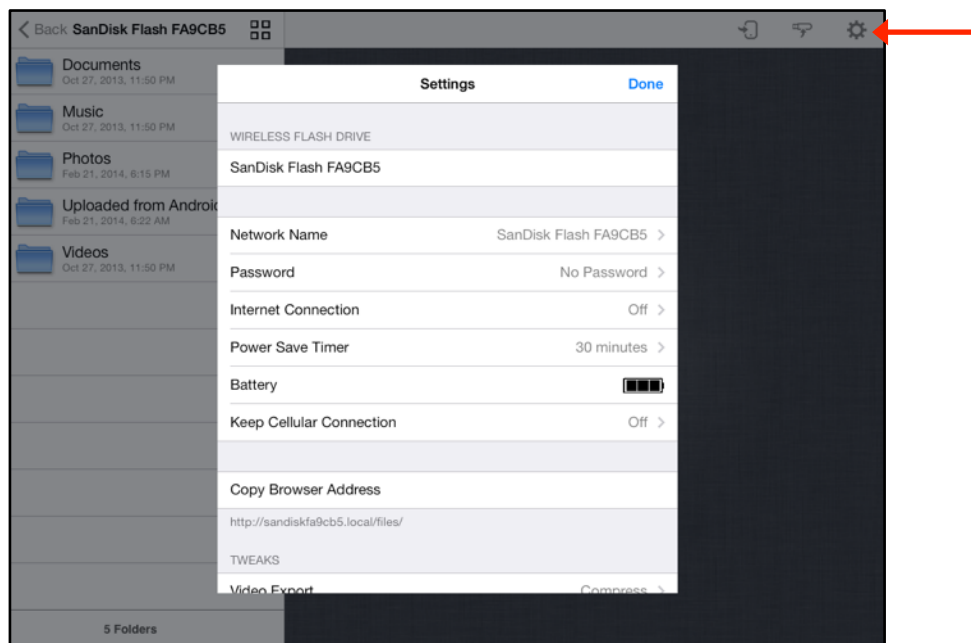


3. Follow the on-screen instructions to reconnect to the Wireless Drive Wi-Fi network after the app update.

Managing Wireless Drive Settings

The Wireless Drive **Settings** screen provides access to all the functions you can perform in the Wireless Flash Drive app and information about the Drive and the app.

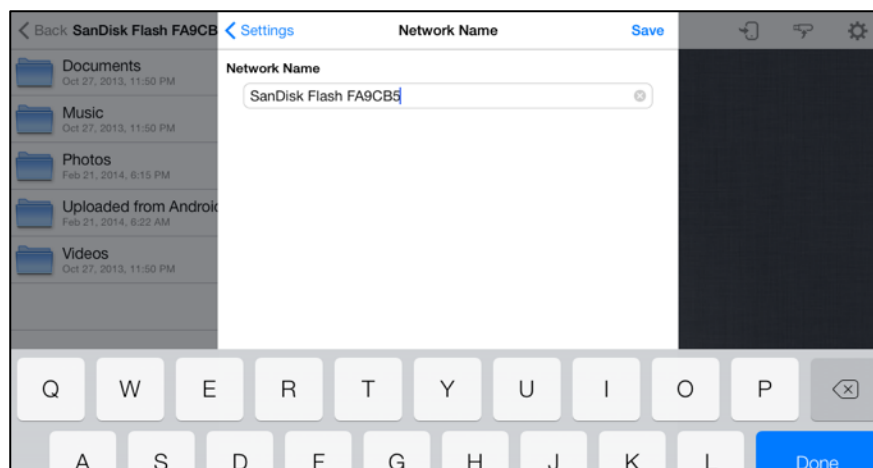
The **Settings** screen is accessed by tapping the Settings icon :



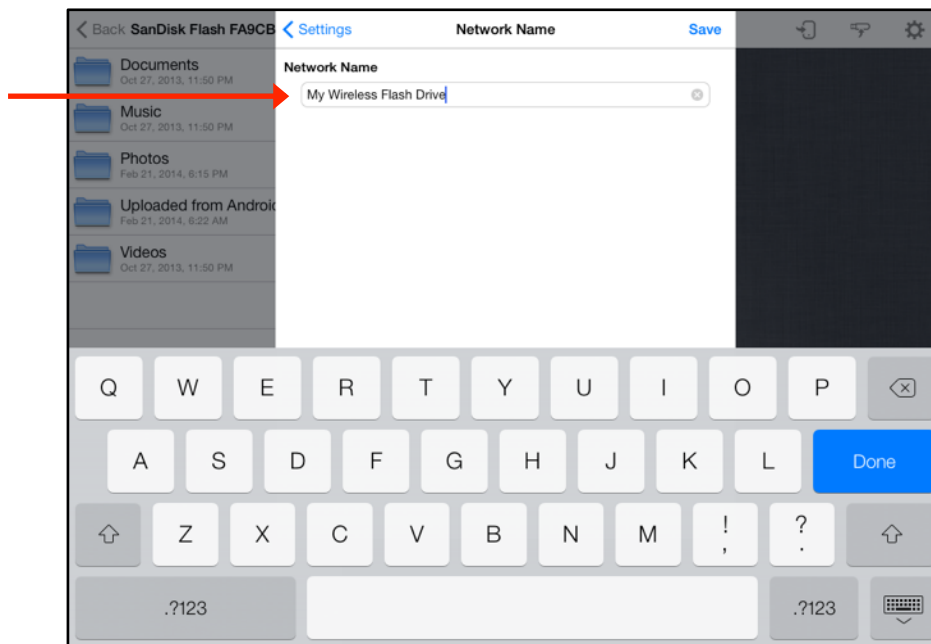
Changing the Wireless Drive Network Name

Your Wireless Drive Wi-Fi network comes uniquely identified as **SanDisk Flash XXXXXX** (in the example, SanDisk Flash FA9CB5). You can change the network name.

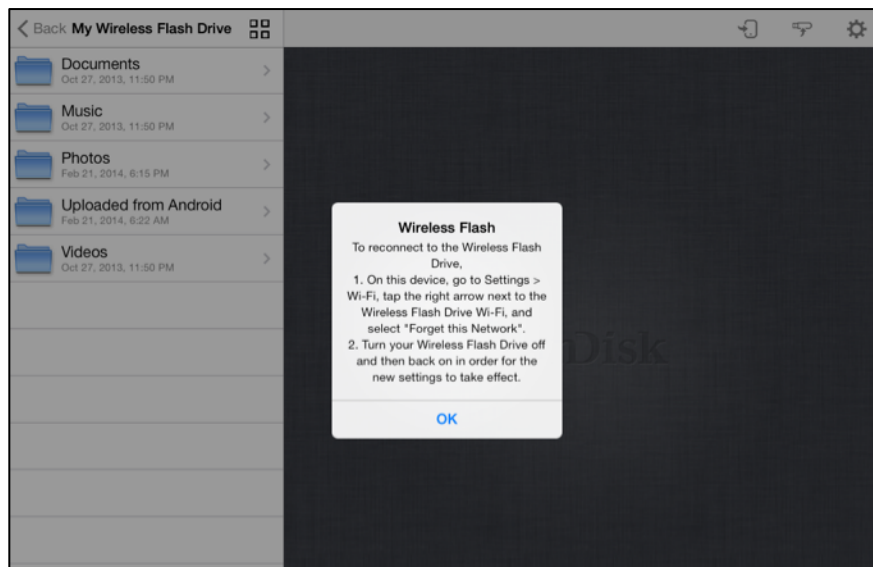
1. On the **Settings** screen, tap **Network Name** to open the **Network Name** screen:



2. On the **Network Name** screen, enter a new name for the network and tap **Save**:



3. Follow the instructions in the pop-up window to go to Settings > Wi-Fi on your mobile device, remove the old Wi-Fi network, and reconnect to the Wireless Drive by selecting it under its new Wi-Fi network name:



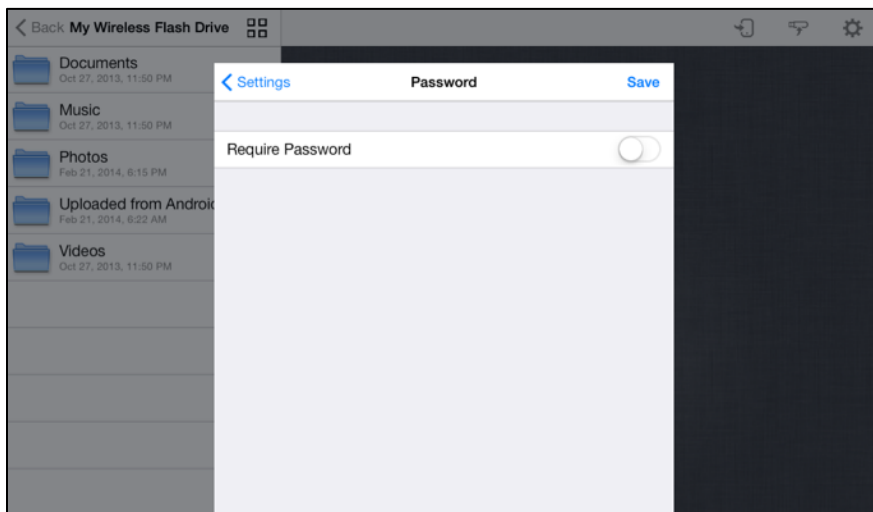
4. Turn your Wireless Drive off and then back on to complete the network name change.

Note: The new Wi-Fi network name will not appear in the list of available Wi-Fi networks until you have turned the Drive off and back on.

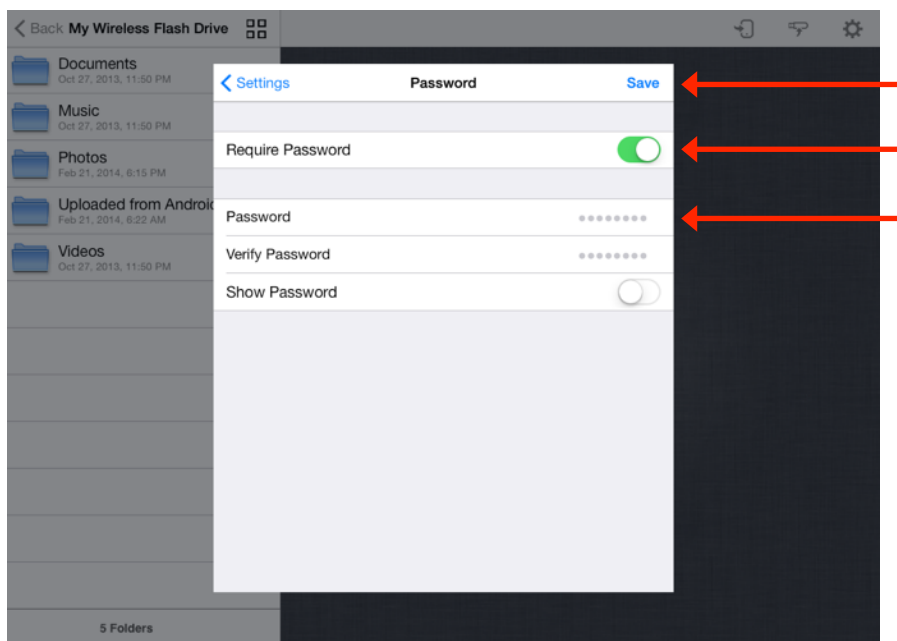
Creating/Changing a Password

The default Wi-Fi security setting is no password. We recommend that you set a Wi-Fi password so that your Drive contents can't be accessed by other people within range (up to 150 feet) of the Wi-Fi network created by the Wireless Drive.

1. On the **Settings** screen, tap **Password** to open the **Password** screen:



2. Turn on **Require Password**, enter and verify a new password, and choose whether to show your password as you enter it. Then tap **Save**:



Note: Starting with app version 1.5.0, creating a Wi-Fi password allows you to limit access to your Wireless Flash Drive not only when you or anybody else connect directly to it, but also when your Flash Drive is connected to an Internet Wi-Fi network

Restoring Factory Settings

If you forget your password or if your Wireless Drive becomes unresponsive, you can reset the Drive to its default factory settings. This erases your password and forces the Drive to reboot, but it does NOT delete any content stored on the Drive. Once the Drive has rebooted, you can set a new password.

To reset the Drive,

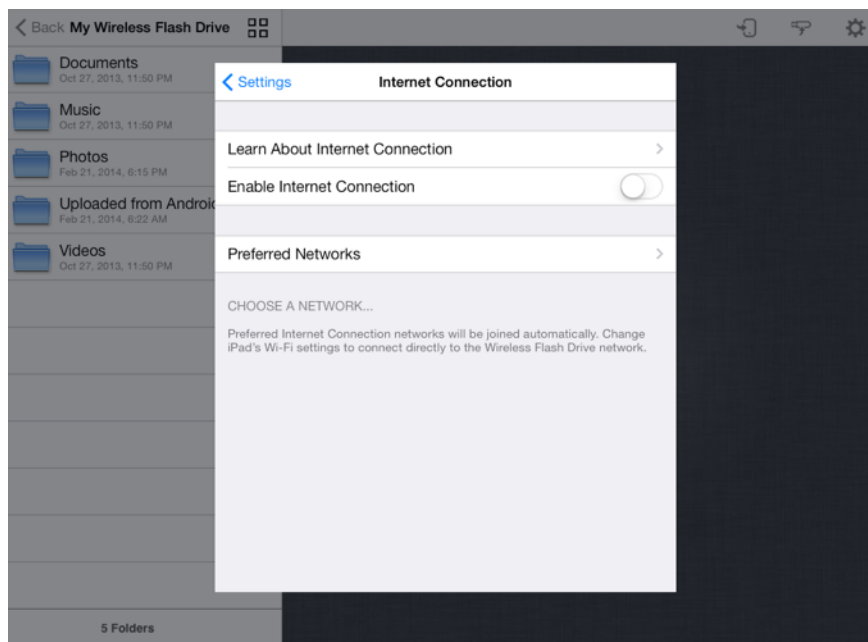
1. Turn off the Wireless Drive.
2. Hold in the Wi-Fi button for 20 seconds.

After about 20 seconds the amber and blue flash alternately two times (this is the actual reset) and the drive resets and stays on.

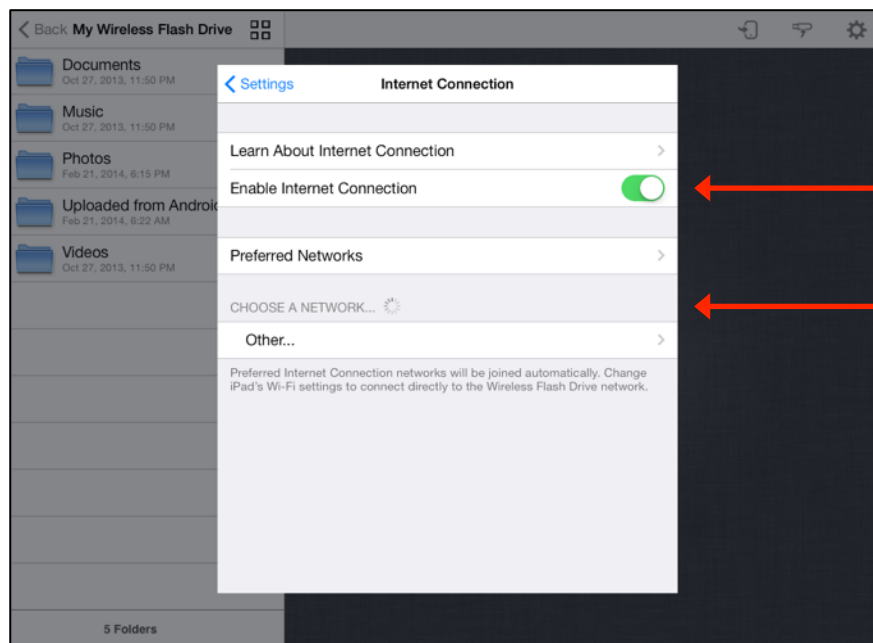
Using Internet Connection

Your mobile device or computer can wirelessly access content on your Drive and at the same time remain connected to the Internet as long as a wireless Internet network is available. (Some wireless networks might block this functionality.)

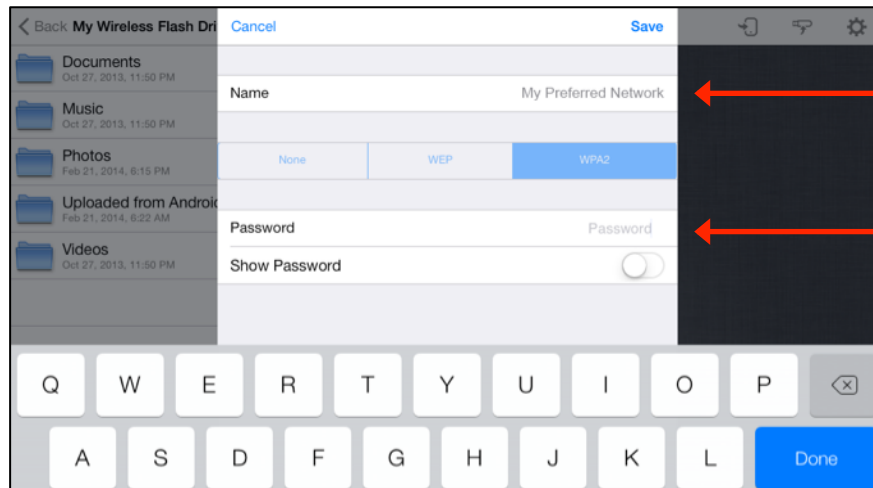
1. On the **Settings** screen, tap **Internet Connection** to open the **Internet Connection** screen:



2. Turn on **Enable Internet Connection** and select the desired network from the list of available networks:



The network you select is added to your Preferred Networks:



From now on, whenever you launch the Wireless Drive app within range of the Preferred Network, it will automatically find your Wireless Drive so you can surf the Internet while you access the content on the Drive.

3. On your mobile device, go to Settings > Wi-Fi and connect to the Preferred Network you selected in the app.

You're now connected to both the Wireless Drive and the Internet. Whenever your mobile device connects to this Internet network and you launch the Wireless Drive app, the mobile device will automatically find the Drive.

Keeping Your Cellular Connection

If your mobile device is running iOS 7 or higher, you can keep it connected to the cellular data network using 3G/4G/LTE WHILE also being connected to the Wireless Flash Drive directly.

1. Connect to your drive's Wi-Fi network in your mobile device's Wi-Fi Settings menu
2. Launch the app
3. Select Settings -> **Keep Cellular Connection** and turn it **On** (The app will save your preference so you would need to set this setting only once.)

Turn this option on to continue receiving emails and maintain access to the internet even when you are out of range of any Wi-Fi Internet access point.

To avoid data charges from your mobile carrier while at home/work or any other place where Wi-Fi Internet access is available, make sure to also turn on **Internet Connection**. (See step by step instructions in the previous section, *Using Internet Connection*.) The app will always prioritize maintaining your device's internet connection via Wi-Fi Internet network (when these are available and set up) even when **Keep Cellular Connection** is turned on.

Note: When **Keep Cellular Connection** is turned on, data charges from your cellular operator may apply.

Wi-Fi only iPad/iPad Mini/iPod touch will have this Settings option grayed out.

Battery Gauge

When the drive is not plugged in into a power source the battery level will show one of the following indications:

1. Battery low: 1 black bar
2. Battery medium: 2 black bars
3. Battery high: 3 black bars

When the drive is plugged in, it will show either:

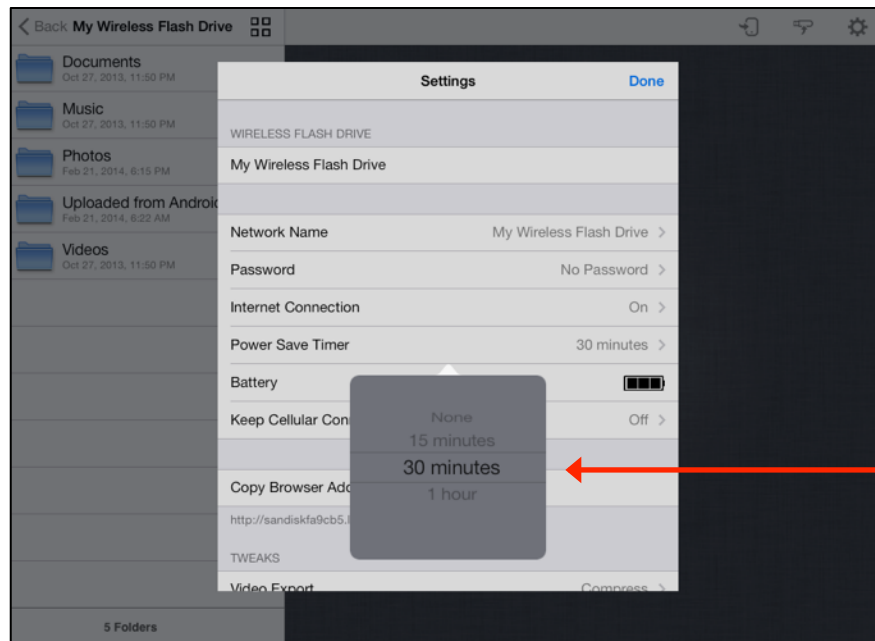
1. Battery charging – animated green battery with 1->2->3 bars.
2. Battery fully charged – green battery with 3 steady bars



Setting the Power Save Timer

You can set your Wireless Drive to power down after it's been idle for a specified amount of time.

1. On the **Settings** screen, tap **Power Save Timer** to open the timer:



2. Use your fingertip to move the timer to the desired amount of time, then tap **Done** to save your setting and close the timer.

Accessing the Drive Using Third-Party Apps

Some third party apps support direct access to the Wireless Flash Drive by utilizing a standard protocol (WebDAV). These apps will typically need the drive's URL. To help users who want to access the Wireless Flash Drive using third-party apps, the Flash Drive's URL is provided and can be copied by tapping the *Copy Browser Address* button.

Compressing Videos During Transfer

Most mobile devices create very large video files that require a powerful processor for smooth streaming on mobile devices. A video that is compressed while it's being transferred to a Wireless Drive plays far more smoothly on the device than an uncompressed version of the file does.

- Select whether or not to compress videos while they're being transferred.

Getting Support

Quick Start Guide

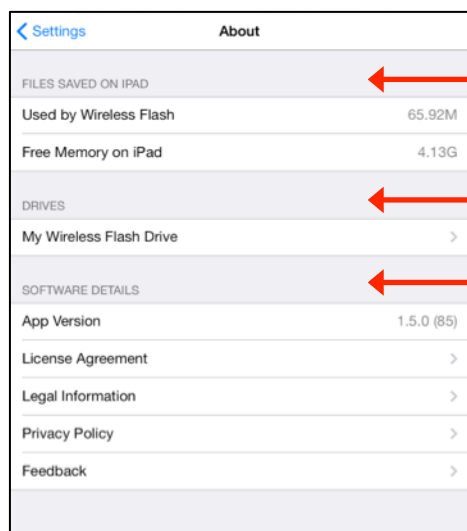
- Tap **Quick Start Guide** for information about setting up your Wireless Drive.

About

The **About** support link provides information about your mobile device, your Wireless Drive, and your Wireless Flash Drive software:

- Files that are saved on your mobile device:

- How much space is taken by files that are used by the Wireless Drive
- How much free memory remains on your mobile device



- Connected Drives:

- Wireless Drive Details
- Memory Card Details

- Software Details:

- App Version
- License Agreement
 - Legal Information
 - SanDisk Privacy Policy



5. Product and Safety Information

Product Specifications

Dimensions	78mm x 27mm x14mm (3.1" x 1" x 0.5")
Weight	27gr (0.95 oz)
Memory Card	Class 10 SanDisk microSDHC™ up to 64GB 1GB=1,000,000,000 bytes. Actual user storage less.
Battery Type	Built-in, non-replaceable rechargeable lithium polymer battery
Operating Duration	Up to 4 hours of continuous usage ³
Battery Charging	Over USB 2.0-powered connection (500mA) (up to 2 hours for full charge) Simultaneous wireless usage and charge with compatible USB power adapter
USB Connectivity	USB 2.0 High Speed
Wireless Connectivity	Wi-Fi: IEEE 802.11 b/g/n (2.4GHz)
Wireless Range	Up to 150 feet (45 meters) line-of-sight
Wireless Security	WPA2
Environmental Requirements	Operating temperature: 0°C to 45°C (32°F to 113°F) Non-operating temperature: 20°C to 45°C (-4°F to 113°F) Relative humidity: 5% to 95% non-condensing Maximum operating altitude: 3,000m (10,000 feet)
Maximum File Size	≤4GB (16/32 GB models), Capacity limited for (64 GB model)
Wireless Access System Requirements	Wi-Fi 802.11 b/g/n 2.4GHz capable device Native iOS or Android™ app, Web browser, WebDAV client
USB Access System Requirements	Compatible with most operating systems that support USB Mass Storage Class

Regulatory Information

FCC Compliance Statement: This device complies with Part 15 of the FCC Rules. Operation is subject to the following two conditions: (1) This device may not cause harmful interference, and (2) This device must accept any interference received, including interference that may cause undesired operation.

Note: This equipment has been tested and found to comply with the limits of a Class B digital device, pursuant to Part 15 of the FCC Rules. These limits are designed to provide reasonable protection against harmful interference in a residential installation. This equipment generates, uses, and can radiate radio frequency energy and if not installed and used in accordance with the instructions, may cause harmful interference to radio communications. However, there is no guarantee that interference will not occur in a particular installation. If this equipment does cause interference to radio or television reception, which can be determined by turning the equipment off and then on, the user is encouraged to try to connect the interference by one or more of the following measures:

- Reorient or relocate the receiving antenna.
- Increase the separation between the equipment and receiver.
- Connect the equipment to a different outlet so that the equipment and receiver are on different branch circuits.
- Consult the dealer or an experienced radio/TV technician for help.

Important: Changes or modifications to this product not authorized by SanDisk could void the electromagnetic compatibility (EMC) and wireless compliance and negate your authority to operate the product. This product has demonstrated EMC compliance under conditions that include the use of compliant peripheral devices and shielded cables between system components. It is important that you use compliant peripheral devices and shielded cables between system components to reduce the possibility of causing interference to radios, televisions, and other electronic devices.

Radiation Exposure: This device complies with the FCC's radio frequency radiation exposure limits set forth for general population/uncontrolled environment. To maintain compliance, this device must not be collocated or operated in conjunction with any other antenna or transmitter. The product complies with the FCC portable RF exposure limit set forth for an uncontrolled environment and is safe for intended operation as described in this manual. Further RF exposure reduction can be achieved if the product is kept as far as possible from the user's body or the device is set to a lower power output if such a function is available.

EU Disposal Information: Disposal & Recycling - Applicable in the European Union and other countries with separate collection systems. To prevent possible harm to the environment or human health from uncontrolled waste disposal, please separate the SanDisk Connect Wireless Flash Drive from other types of wastes and recycle it responsibly to promote the sustainable reuse of material resources. Household users should contact either the retailer where they purchased this product, or their local government office, for details of where and how they can take this item for environmentally safe recycling. Business users should contact their supplier and check the terms and conditions of the purchase contract. This product should not be mixed with other commercial waste for disposal.

Recycling SanDisk Connect Wireless Flash Drive: Do not dispose of either the SanDisk Connect Wireless Flash Drive with your household waste. In some countries or regions, collection systems are set up to handle electrical and electronic waste items. Contact your regional authorities for more details. If collection systems are not available, please return unwanted accessories to any SanDisk Approved Service Center in your region.

EU Declaration of Conformity: Hereby, SanDisk declares that this SanDisk Connect Wireless Flash Drive is in compliance with the essential requirements and other relevant provisions of Directive 1999/5/EC.

EN 300 328 v1.7.1 (2006-10)

EN 301 489-17 v1.3.2 (2008-

04) EN 62311: 2008

Safety and Care

All wireless devices are susceptible to interference which might affect the performance of a Wireless Flash Drive.

Do not switch on a Wireless Flash Drive in restricted areas or areas where wireless devices are prohibited. When instructed to do so, switch off the Wireless Flash Drive in restricted areas such as those near medical equipment, fuel/chemicals, or blasting areas, or when instructed to in aircraft.

The Wireless Drive contains a lithium polymer battery that has been fully tested for safety. However, several precautions should be taken when using a Wireless Drive:

- When a Wireless Drive is in a pocket with other metallic objects, make sure the cap is in place.
- Never charge a Wireless Drive unattended.
- Charge a Wireless Drive in an area away from flammable materials.

- Never intentionally heat a Wireless Drive in a microwave oven or dryer or place it a fire. Never use the Wireless Drive in temperatures above 60° C (140° F).
- Stop using a Wireless Drive if any abnormal heat, odor, deformation, discoloration, or other abnormal condition is detected. If any liquid leaks from a Wireless Drive, wash your hands well with fresh water immediately. If liquid gets into your eyes, wash with edible oil and see a doctor immediately.

The Wireless Flash Drive is not water resistant.

Do not store a Wireless Flash Drive in extreme temperatures. High temperatures can shorten the life of the device by damaging the battery or cause warping or melting of the plastic enclosure. Cold temperatures can also shorten the life of the Drive by damaging the battery, causing the plastic enclosure to crack, or causing moisture to condense on or inside the device.

Keep the Wireless Flash Drive dry. Water or other liquids can damage it. In addition, high humidity can cause condensation to form. If a Wireless Flash Drive gets wet, turn it off, place it in a low-humidity environment, and allow it to completely dry.

Do not store a Wireless Flash Drive in a dusty or dirty area because mechanical parts may be damaged or cease to work.

Do not attempt to open or modify a Wireless Flash Drive. It contains no internal serviceable parts. Attempting to modify a Wireless Flash Drive can damage the device and cause it to operate in violation of government regulations and can cause a safety concern.

Do not drop, shake, strike, crush, or blend a Wireless Flash Drive as this may damage the device.

If a Wireless Flash Drive becomes damaged, halt use immediately.

Cleaning

Before cleaning a Wireless Flash Drive, disconnect it from any USB port or cable, turn off Wi-Fi, and remove the memory card from the card slot. If the outside of the Wireless Flash Drive is soiled, use a cloth that has been slightly dampened with water to clean the outside. Do not allow water to enter the Wireless Flash Drive around the power button, USB connector, or card slot.

If foreign material enters the Wireless Flash Drive through the card slot, attempt to free it by lightly shaking the Drive with the card slot facing down. If this does not work, try using a can of compressed air.

Maintenance and Storage

The Wireless Flash Drive contains a lithium polymer battery that needs proper care for best usage.

Note: While the lithium polymer battery does not have any memory effect, proper care is required for the best usage.

Standard Maintenance

For proper maintenance of the battery, it is best to periodically let the Wireless Flash Drive discharge. We do not recommend keeping the Wireless Flash Drive plugged in.

For the best battery life, we recommended charging and discharging the Wireless Flash Drive battery at least once a month.

Long Term Storage

If the Wireless Flash Drive will not be used, it is best to keep the battery around 50% charged. To charge the battery to approximately 50%, fully discharge the Wireless Flash Drive until it turns itself off, then let it charge for 1 hour. Store the Wireless Flash Drive at a temperature between 20° C and 45° C (4° F and 113° F) at a relative humidity of 65% ± 20%.

Recycling

Please recycle all the Wireless Flash Drive packaging.

When the Wireless Flash Drive has reached the end of its useful life, return it to a recycling station in your community to prevent uncontrolled waste disposal and dispose of the battery properly.

Index

A

accessing files through the Wireless Drive app **11**
accessing the Drive without the app **6, 38**
allowing access to your Wireless Drive **24**
application overview **11**

B

battery life **3, 40**
battery type **40**

C

changing the Wireless Drive network name **32**
charging the Wireless Drive **3**
cleaning **43**
compressing videos during transfer **38**
connecting **4, 5**
 accessing the Drive without the app **6**
 via Wi-Fi **5**
connecting the Wireless Drive to the Internet **35 - 37**
connecting to the Wireless Drive **4**
connecting via Wi-Fi **5**
controlling music from outside the music play screen **17**
creating a new folder **23**
creating or changing a password **34**

D

deleting content
 deleting a file **27**
 deleting a folder **27**
deleting files **27**
deleting files and folders **27**
deleting folders **27**
downloading files **18,19**
downloading the app **4, 6**

F

factory reset **4**
files
 downloading **18, 19**
 moving **17**
 sharing **24**
filter controls **9**
firmware
 upgrading **29**
force restart **35**
forgot password **35**

G

getting started **3**
getting support **39**
getting Wireless Drive information **40**

H

hardware specifications **2**

I

Internet connection
 preferred Networks **36**
iTunes
 using with Wireless Drive **15**

L

loading content **6**
 from a computer **7**
 from a mobile device **8**

M

maintenance and storage **44**
managing the Wireless Drive **29**
media content
 loading **6**
media files
 uploading **19**
moving files **17**
music
 controlling from outside the music play screen **17**
 playing in background **17**

N

navigation bar **8**

P

password
 create or change **34**
password reset **35**
playing iTunes content **15**
playing music **15**
power save timer **38**
preferred networks **36**
product and safety information **40**
product specifications **40**

R

- reboot drive **35**
- regulatory information **41**
- reset drive **35**
- reset password **35**
- restart unresponsive drive **35**
- restore factory settings **4, 35**

S

- safety and care **42**
- sending files to others **25**
- setting the Power Save Timer **38**
- settings
 - changing the Wireless Drive network name **35**
 - compressing videos during transfer **40**
 - connecting the Wireless Drive to the Internet **35 - 37**
 - creating or changing a password **34**
 - power save timer **40**
- sharing files **24**
 - sending media files to others **25**
- sharing media files
 - allowing access to your Wireless Drive **24**
- software
 - upgrading **31**
- streaming videos **14**
- supported file formats **2**
- system requirements **2**

U

- unresponsive drive **35**
- unsupported file formats **28**
- updating the app **31**
- updating the firmware **29**
- upload options
 - creating a new folder **23**
- uploading files **19**
- upload options **20**
- uploading files from your mobile device **22**
- uploading photos and videos **20**
- using Internet Connection **35**
- using the Wireless Drive while charging **3**
- using the Wireless Flash Drive with iTunes **15**

V

- viewing photos **12**

W

- Wireless Drive
 - about **39**
 - accessing files **11**
 - connect to **4**
 - connecting via Wi-Fi **5**
 - accessing the Drive without the App **6**
 - downloading the app **4**
 - features **1**
 - main screen **12**
 - recycling **44**
 - use while charging **3**
- Wireless Drive LEDs **4**
- Wireless Flash Drive Overview **1**
- Wireless Drive settings **32**
- working with files **11**

¹ Some DRM protected content cannot be streamed. Check with the content provider for playback restrictions.

² 1GB=1,000,000,000 bytes. Actual user storage less.

³ Based on streaming 720p content at 2mbps to one device; actual life and performance may vary depending upon usage and settings; battery not replaceable.