



REPORT

Ecology Assessment Report

Q-4100-15-RP-038

Australia Pacific LNG Project

This report provides an overview of the environmental and ecological values for the Site contained within 3RG247 and 32RG247 associated with Disturbance Approval #1638.

Revision	Date	Description	Originator	Checked	QA/Eng	Approved
0	28/01/2015	Issued for Use	G Phillips <i>gp</i>	C Dyason <i>[Signature]</i>	C Dyason <i>[Signature]</i>	S Dale <i>[Signature]</i>

Uncontrolled when printed unless issued and stamped Controlled Copy.

Release Notice

This document is available through the Australia Pacific LNG Project controlled document system TeamBinder™. The responsibility for ensuring that printed copies remain valid rests with the user. Once printed, this is an uncontrolled document unless issued and stamped Controlled Copy.

Third-party issue can be requested via the Australia Pacific LNG Project Document Control Group.

Document Conventions

The following terms in this document apply:

- **Will, shall or must** indicate a mandatory course of action
- **Should** indicates a recommended course of action
- **May or can** indicate a possible course of action.

Document Custodian

The custodian of this document is the Australia Pacific LNG Project - Environmental Approvals Manager. The custodian is responsible for maintaining and controlling changes (additions and modifications) to this document and ensuring the stakeholders validate any changes made to this document.

Deviations from Document

Any deviation from this document must be approved by the Australia Pacific LNG Project - Environmental Approvals Manager.

Table of Contents

1.	Introduction	5
1.1.	Scope of Works	5
1.2.	Definitions & Abbreviations	5
1.2.1.	Definitions	5
1.2.2.	Abbreviations	6
1.2.3.	Document Revision Table	6
1.2.4.	Document References	7
2.	Site Context	8
3.	Methodology	9
3.1.	Desktop and Literature Review	9
3.2.	Field Survey	10
3.2.1.	Vegetation Community Survey	10
3.2.2.	Habitat Surveys	10
3.2.3.	Threatened Flora and Fauna Survey	10
3.2.4.	Exotic Flora and Fauna Survey	11
3.2.5.	Disturbance Survey	11
3.2.6.	Survey Limitations	11
4.	Results and Discussions	12
4.1.	Desktop and Literature Review	12
4.2.	Field Survey	12
4.2.1.	Commonwealth Environmental Matters	12
4.2.2.	Queensland Environmental Matters	14
4.2.3.	Disturbance	16
5.	Conclusions	17
	Appendix A: Site Location and Survey Points	18
	Appendix B: Results of EPBC Protected Matters Search Tool	19
	Appendix C: Wildlife Online Database Search Results	20
	Appendix D: DNRM Mapped Regional Ecosystems	21
	Appendix E: EHP Mapping of ESAs and Other Environmental Values	22
	Appendix F: List of Flora and Fauna Species Identified on Site	23
	Appendix G: Ground Truthed Regional Ecosystems	27
	Appendix H: Ground Truthed <i>NC Act</i> Listed Special Least Concern Species Present	28
	Appendix I: Ground Truthed Weeds and Pest Fauna Present	29

List of Tables

Table 1: Definitions	5
----------------------------	---

Table 2: Abbreviations 6

Table 3: Revision History 6

Table 4: Associated Document References..... 7

Table 5: Site Context 8

Table 6: Desktop and Literature Review Sources 9

Table 7: Commonwealth Environmental Matters - Field Survey Results 13

Table 8: State environmental matters - field survey results..... 14

Table 9: Ground Truthed Regional Ecosystems and Regrowth..... 15

Table 10: Pest Flora Recorded on Site 15

1. Introduction

This report provides a description of the ecological values found within Lot/Plans 3RG247 and 32RG247 herein referred to as 'the Site'. The results are based on an initial desktop assessment followed by a field survey to confirm the vegetation communities, flora and fauna species, habitat values and areas of disturbance.

This report has been compiled by and the field surveys were conducted by Grant Phillips. Grant is approved to undertake ecological surveys by Commonwealth Department of Environment (formerly the Department of Sustainability, Environment, Water, Population and Communities) in writing on 13/09/2012.

1.1. Scope of Works

An ecological assessment survey was required to be carried out on Lot/Plans 3RG247 and 32RG247, within 200m of proposed infrastructure as part of Australia Pacific LNG Sustain Phase 2017 infill well sites. Refer to Appendix A: Site Location and Survey Points for an overview of the Site.

1.2. Definitions & Abbreviations

1.2.1. Definitions

Table 1: Definitions

Term	Definition
Project	Australia Pacific LNG Project
Trimble	Trimble integrates positioning technologies such as GPS, laser and optical with application software, wireless communications and services to provide innovative positioning solutions for applications such as surveying, construction and engineering.

1.2.2. Abbreviations

The following abbreviations are found throughout this report.

Table 2: Abbreviations

Abbreviation	Description
BoM	Bureau of Meteorology
BMRGG	Bureau of Mineral Resources, Geology and Geophysics
CSG	Coal Seam Gas
DNRM	Department of Natural Resources and Mines (D-Qld)
DoE	Department of Environment (C'th)
DSEWPaC	Department of Sustainability, Environment, Water, Population and Communities (C'th)
EHP	Department of Environment and Heritage Protection (Qld) (formally DERM and EPA)
EPBC	<i>Environmental Protection Biodiversity and Conservation Act 1999</i> (C'th)
ESA	Environmentally Sensitive Area
LNG	Liquefied Natural Gas
<i>LP Act</i>	<i>Land Protection (Pest and Stock Route Management) Act 200</i> (Qld).
MNES	Matters of National Environmental Significance
<i>NC Act</i>	<i>Nature Conservation Act 1992</i> (Qld)
NCaP	No Concern at Present
RE	Regional Ecosystem
REDD	Regional Ecosystem Description Database
SEVT	Semi Ever Green Vine Thicket
TEC	Threatened Ecological Communities
WoNS	Weed of National Significance

1.2.3. Document Revision Table

Table 3: Revision History

Revision	Date	Description

1.2.4. Document References

The following documents are referred to throughout this report.

Table 4: Associated Document References

Document Number	Title
	Accad, A; Neldner, V.J; Wilson, B. A; and Niehus, R.E. (2013) <i>Remnant Vegetation in Queensland. Analysis of remnant vegetation 1997-2011, including regional ecosystem information</i> . (Queensland Department of Science, Information Technology, Innovation and the Arts: Brisbane). http://www.ehp.qld.gov.au/ecosystems/remnant-vegetation/index.html
	Australian Weeds Committee (2012), <i>Weeds of National Significance 2012</i> . Department of Agriculture, Fisheries and Forestry, Canberra, ACT
	BoM (2014) <i>Bureau of Meteorology - Climate statistics for Australian Locations</i> . Australian Government, Canberra. http://www.bom.gov.au/climate/averages/tables/cw_042023.shtml
	BMRGG (1971a) <i>Australia 1:250,000 Geological Series; Chinchilla, Queensland; Sheet SG 56-9</i> . Mercury-Walch Pty Ltd., Hobart.
	BMRGG (1971b) <i>1:250,000 Geological Series-Explanatory Notes; Chinchilla, Qld; Sheet Sg/56-9 International Index</i> . Tasmanian Government Printer, Hobart.
	DNRM (2014) <i>Regional Ecosystem and Remnant Map—version 8.1 for the purpose of the Vegetation Management Act 1999</i> . The Department of Natural Resources and Mines, Brisbane. https://www.qld.gov.au/environment/land/vegetation/map-request/ Accessed 30/12/2014
	DoE (2013a) <i>Protected Matters Search Tool</i> . Department of the Environment. Canberra. http://www.environment.gov.au/epbc/pmst/index.html Accessed 30/12/2014
	DoE (2013b) <i>Species Profile and Threats Database (EPBC Act List of Threatened Ecological Communities)</i> . Department of the Environment. Canberra. http://www.environment.gov.au/cgi-bin/sprat/public/publiclookupcommunities.pl
	DoE (2013c) <i>EPBC Threatened species & ecological communities</i> . Department of the Environment. Canberra. http://www.environment.gov.au/biodiversity/threatened
	EHP (2012a). <i>Regional Ecosystem Land Zone definitions</i> , Department of Environment and Heritage Protection, Brisbane. https://www.qld.gov.au/environment/plants-animals/plants/ecosystems/land-zones/
	EHP (2012b) <i>Wildlife Online</i> . Department of Environment and Heritage Protection, Brisbane. http://www.ehp.qld.gov.au/wildlife/wildlife-online/ Accessed 30/12/2014
	EHP (2012c) <i>Map of Referable Wetlands</i> . Department of Environment and Resource Management, Brisbane. http://www.ehp.qld.gov.au/ecosystems/wetlands/referable-wetlands-maps.html Accessed 30/12/2014
	EHP (2012d) <i>Regional Ecosystem Description Database (REDD)</i> . http://www.ehp.qld.gov.au/ecosystems/biodiversity/regional-ecosystems/index.php
	EHP (2012e) <i>Essential Habitat Map for the purpose of the Vegetation Management Act 1999</i> . The Department of Environment and Resource Management, Brisbane. http://www.ehp.qld.gov.au/licences-permits/maps_of_environmentally_sensitive_areas.php Accessed 30/12/2014
	Neldner, V.J., Wilson, B. A., Thompson, E.J. and Dillewaard, H.A. (2012). <i>Methodology for Survey and Mapping of Regional Ecosystems and Vegetation Communities in Queensland. Version 3.2</i> . Updated August 2012. Queensland Herbarium, Environmental Protection Agency, Brisbane. 128 pp.
	NSW (2011) <i>Weeds of National Significance, National Weeds Strategy</i> . Australian Government. http://www.weeds.org.au/ or http://www.daff.qld.gov.au/4790_7046.htm
	Queensland Parliamentary Counsel (2002) <i>Land Protection (Pest and Stock Route Management) Act</i> , Queensland Government, Brisbane. http://www.legislation.qld.gov.au/legisln/current/l/landprpsrma02.pdf
	Queensland Parliamentary Counsel, (2000) <i>Water Act</i> , Queensland Government, Brisbane. http://www.legislation.qld.gov.au/legisln/current/w/watera00.pdf
	Queensland Parliamentary Counsel, (2006) <i>Nature Conservation (Wildlife) Regulation</i> , Queensland Government, Brisbane. http://www.legislation.qld.gov.au/LEGISLTN/CURRENT/N/NatureConWIR06.pdf
	Sattler, P.S. and Williams, R.D. (eds) (1999) <i>The Conservation Status of Queensland's Bioregional Ecosystems</i> . Published by Environmental Protection Agency, Brisbane.

Document Number	Title
Q-LNG01-15-MP-0109	Australian Pacific LNG (2011) <i>Environmental Constraints Planning and Field Development Protocol</i> .

2. Site Context

Table 5: Site Context

Bioregion	The site occurs in the Eastern Darling Downs (sub region 31 of Bioregion 11) of the Brigalow Belt Bioregion (Bioregion 11 of Qld) and is described by Sattler and Williams (1999) as containing foothills of the Main Range, parts of the Condamine River plain and low hills in the south. Substrates found in the area include Tertiary Basalt in the extreme east, Jurassic sediments in the south-east, Triassic-Jurassic sediments in the north-east and alluvial soils of varying age along the Condamine River plain. Major vegetation communities include ironbark-box woodlands on basalts and sandstone, Semi-Evergreen Vine Thicket (SEVT) and Brigalow (<i>Acacia harpophylla</i>) open forest and vine thicket on sandstones, and, grasslands and grassy woodlands along the Condamine River plain.
Current land use	The site is currently occupied by Australia Pacific LNG for Coal Seam Gas (CSG) gathering and production. Existing infrastructure includes a number of gas wells, gathering flowlines, access tracks, offices, gas facilities, water treatment facilities, water storages and associated infrastructure. The site is also use for grazing domestic livestock and environmental offsets.
Soils and geology	Geology mapping (BMRGG 1971a, BMRGG 1971b) indicates that the site surface geology is unconsolidated Quaternary (Cainozoic) sand and soil cover over consolidated Jurassic-Lower Cretaceous sandstone, mudstone, siltstone, and mudstone of the Kumbarilla beds. Cainozoic sands are associated with Landzone 5 - Tertiary-early Quaternary loamy and sandy plains and plateaus and field observation found the sandstone on site had weathering, which is associated with Landzone 7 - Cainozoic duricrusts. Observations on site also found that some recent alluvial sediments from an active drainage system, which are presumably finer than the 1:250,000 scale of the geology map referred to, hence not being mapped on site. These recent alluvial sediments are associated with Landzone 3 -recent Quaternary alluvial systems (EHP 2012a).
Climate	The nearest weather station to the Site is at Miles Post Office (Bureau of Meteorology (BoM) station ID 042023) located approximately 74km north west of the Site has a mean annual rainfall of 652 mm, with most rain falling between December and February, with August being the driest month. Approximately 1mm of rain fell at Miles in the week preceding the survey (BoM, 2014). The average annual maximum temperature at Miles is 27.1°C (BoM, 2014).

3. Methodology

The methodology employed in compilation of this Ecological Assessment Report consisted of:

- A desktop and literature review of ecological databases and literature sources as direct references for the survey undertaken
- A field survey of the Site

An explanation of these activities is outlined in this section.

3.1. Desktop and Literature Review

Sources utilised in the desktop and literature review are listed in Table 6 below.

Table 6: Desktop and Literature Review Sources

Database	Co-ordinates or search area	Date of search	Appendix
<i>Environmental Protection Biodiversity and Conservation Act 1999 (EPBC Act) Protected Matters Search Tool</i>	Lat -22.87 Long 150.35	30/12/2014	Appendix B: Results of EPBC Protected Matters Search Tool
<i>Nature Conservation Act 1992 (NC Act) Protected Species Lists Wildlife Online Database</i>	Lat -22.87 Long 150.35	30/12/2014	Appendix C: Wildlife Online Database Search Results
Department of Natural Resources and Mines (DNRM) Regional Ecosystem and Remnant Map—version 8.1 (2014)	3RG247 and 32RG247	30/12/2014	Appendix D: DNRM Mapped Regional Ecosystems
EHP Map of Environmentally Sensitive Areas (2012e)	Lat -22.87 Long 150.35	30/12/2014	Appendix E: EHP Mapping of ESAs and Other Environmental Values
EHP Map of Referable Wetlands and Wetland Protection Areas (2012c)	1RG491	30/12/2014	N/A
Queensland Geological Mapping, Chinchilla Map sheet SG56-09 and 1:250,000 Geological series (1971).	Lat -22.87 Long 150.35	30/12/2014	N/A
GISWR_22724_IFICD_RevA Disturbance Approval Map Suite for DA1638	N/A	N/A	N/A

Data searches were conducted using a 10 km buffer around the coordinate Lat -22.87 Long 150.35 which corresponds to the approximate centre point of the property/properties.

3.2. Field Survey

Ecological surveys were conducted in accordance with:

- The *Methodology for Survey and Mapping of Regional Ecosystems and Vegetation Communities in Queensland* (Neldner et al. 2005)
- In line with the methodology described in the *Environmental Constraints Planning and Field Development Protocol (Q-LNG01-15-MP-0109, Australia Pacific LNG 2011)*.

Field surveys were undertaken between the 31/12/2014 and the 1/01/2015.

3.2.1. Vegetation Community Survey

Baseline botanical surveys were undertaken to describe dominant flora and vegetation community structure throughout the survey site. Botanical surveys were consistent with the tertiary level of data collection as described in Neldner et al. (2013).

The vegetation community surveys were undertaken within 50m x 10m plots for the purpose of typifying the vegetation community under assessment. Vegetation community data was entered into the data fields provided by the Trimble data capture system. A total of 5 formal vegetation community surveys were undertaken within the Site. Ground-truthing of the DNRM RE designation (DNRM 2014) at and surrounding the Site was undertaken via quaternary level and random meanders transect assessments, as defined by Neldner et al. (2013).

The locations of the vegetation community survey sites are presented in Appendix A: Site Location and Survey Points.

Relative abundance data was collected for each stratum within the community as per the methodology described in the Environmental Constraints Planning and Field Development Protocol (Q-LNG01-15-MP-0109 Australia Pacific LNG (2011)), as presented by the vegetation structure point data sheet of the Trimble unit. Representative photo(s) were taken of the subject vegetation community via the Trimble unit or camera. Photo aspect data was recorded.

Vegetation community polygons were verified in accordance with Queensland regional ecosystem (biodiversity status) (DNRM 2014) and EPBC threatened ecological community (TEC) criteria (DoE 2013b).

3.2.2. Habitat Surveys

Habitat surveys were undertaken in conjunction with vegetation community survey within the 50m x 10m quadrant. A total of 3 formal habitat surveys were undertaken across the Site (Appendix A: Site Location and Survey Points).

Within each habitat survey, a range of habitat features were recorded on the relevant Trimble data sheet. Where deemed appropriate, representative photo(s) were taken of the given habitat patch via the Trimble unit. Photo aspect data is entered into the relevant data sheet.

3.2.3. Threatened Flora and Fauna Survey

Threat-listed species are those listed under the *EPBC Act 1999* and the *Nature Conservation (Wildlife) Regulation 2006*.

Targeted threat-listed flora searches were undertaken for species highlighted by the database and literature review. Searches were undertaken based on incidental field observations of high quality habitat, the identification of distinct ecological features through the preliminary desktop and literature review, or within the vicinity of a vegetation community survey/habitat feature plots where field ecologists deemed the given area to be of sufficient potential value to a threatened species to warrant such a search.

Fauna species were recorded opportunistically throughout the survey area.

3.2.4. Exotic Flora and Fauna Survey

Presence and abundance of declared flora and fauna as defined by the *Land Protection (Pest and Stock Route Management) Act 2002 (LP Act)* and Weeds of National Significance (WoNS) as determined by the Australian Weeds Committee (2012) were recorded at the time of the survey both within survey plots and opportunistically while traversing the Site. Exotic flora and fauna species were entered into the Trimble data capture system when encountered.

3.2.5. Disturbance Survey

Evidence of disturbance at survey sites was recorded for type, severity and estimated time of most recent occurrence. The recording of disturbance was also conducted at opportunistic levels where appropriate.

3.2.6. Survey Limitations

A number of factors are considered likely to influence survey results for particular species or species groups. These factors are:

- Timing (seasons) and duration of the survey period
- Weather conditions in the preceding seasons and immediately prior to the survey
- Restricted spatial area of the habitats within the Site

Due to the above-listed items, the surveys undertaken may not provide a true indication of seasonal habitat utilisation by fauna species within the Site. Some cryptic flora species may only be detected during particular flowering periods. The field investigations undertaken were limited to passive techniques (e.g. no live trapping) and were limited to summer. Additional survey effort would be required to provide a more comprehensive inventory of species, both threatened and common.

4. Results and Discussions

This section includes the results of the database and literature review. Some information is contained in the appendices and is referenced below.

4.1. Desktop and Literature Review

Results of the desktop and literature review can be found in Appendices B-E, as listed in Table 6.

4.2. Field Survey

Results of field surveys are detailed in the following sections. A list of flora and fauna species identified during the field survey is included in Appendix F: List of Flora and Fauna Species Identified on Site.

4.2.1. Commonwealth Environmental Matters

Field survey results for Commonwealth environmental matters (Matters of National Environmental Significance (MNES), TECs, threat-listed species) are outlined in Table 7.

Two EPBC listed marine bird species were encountered on site; black-faced cuckoo-shrike (*Coracina novaehollandiae*) and Horsfield's bronze-cuckoo (*Chalcites basalis*). No MNES were encountered on site during the survey.

Table 7: Commonwealth Environmental Matters - Field Survey Results

Commonwealth environmental matters	Present	Location	Description	Status*	Condition	Comments
TECs	N	N/A	N/A	N/A	N/A	N/A
EPBC threat-listed flora	N	N/A	N/A	N/A	N/A	N/A
EPBC threat-listed fauna	N	N/A	N/A	N/A	N/A	N/A
Migratory species	N	N/A	N/A	N/A	N/A	N/A
Marine species	Y	Heard calling from fauna observation points.	black-faced cuckoo-shrike (<i>Coracina novaehollandiae</i>) and Horsfield's bronze-cuckoo (<i>Chalcites basalis</i>)	EPBC listed marine species	N/A	No breeding places identified, EPBC listed marine species protected on Commonwealth land.

*Status taken from DoE 2013b & c

4.2.2. Queensland Environmental Matters

4.2.2.1. Field survey results

Field survey results for State environmental matters (EVNT etc) are outlined in Table 8.

Table 8: State environmental matters - field survey results

State environmental matters	Present (Y/N)	Location	Description*	Status*	Comments
Endangered regional ecosystems	N	N/A	N/A	N/A	N/A
Of concern regional ecosystems	Y	Along drainage feature.	RE 11.3.4 - <i>Eucalyptus tereticornis</i> and/or <i>Eucalyptus</i> spp. woodland on alluvial plains	Of Concern.	Narrow band approximately 10-20m wide, associated with alluvial soils and hydrology of drainage feature.
NC Act listed flora (EVNT)	N	N/A	N/A	N/A	N/A
NC Act listed fauna (EVNT)	N	N/A	N/A	N/A	N/A
Special Least Concern plants (SLC)	Y	Scattered throughout site	Black orchid (<i>Cymbidium canaliculatum</i>), Mulga fern (<i>Cheilanthes sieberi</i>) and bristly cloak fern (<i>C. distans</i>)	Special Least Concern	N/A

*Status and description taken from EHP 2012d

4.2.2.2. Ground Truthed Regional Ecosystems

DNRM mapping identified REs 11.4.12/11.4.3/11.10.9 to be present on site. This was ground truthed as incorrect and results are presented in Table 9.

Table 9: Ground Truthed Regional Ecosystems and Regrowth

RE ID	Status (biodiversity)*	Short description	Condition
11.3.4	OC	<i>Eucalyptus tereticornis</i> and/or <i>Eucalyptus</i> spp. woodland on alluvial plains	Good, mature representatives of indicative species in all strata
11.5.1	NCaP	<i>Eucalyptus crebra</i> and/or <i>E. populnea</i> , <i>Callitris glaucophylla</i> , <i>Angophora leiocarpa</i> , <i>Allocasuarina luehmannii</i> woodland on Cainozoic sand plains and/or remnant surfaces	Good, mature representatives of indicative species in all strata
11.7.2	NCaP	<i>Acacia</i> spp. woodland on Cainozoic lateritic duricrust. Scarp retreat zone.	Good, mature representatives of indicative species in all strata
11.7.4	NCaP	<i>Eucalyptus decorticans</i> and/or <i>Eucalyptus</i> spp., <i>Corymbia</i> spp., <i>Acacia</i> spp., <i>Lysicarpus angustifolius</i> woodland on Cainozoic lateritic duricrust	Good, mature representatives of indicative species in all strata
11.7.7	NCaP	<i>Eucalyptus fibrosa</i> subsp. <i>nubila</i> +/- <i>Corymbia</i> spp. +/- <i>Eucalyptus</i> spp. woodland on Cainozoic lateritic duricrust	Good, mature representatives of indicative species in all strata

*Status taken from EHP 2012d

All ground truthed regional ecosystems and regrowth are represented schematically in Appendix G: Ground Truthed Regional Ecosystems.

4.2.2.3. Other Significant Species

The survey identified three Special Least Concern Species on site, as listed by the *NC Act*:

- Mulga fern (*Cheilanthes sieberi*)
- bristly cloak fern (*C. distans*)

For recorded locations refer to Appendix H: Ground Truthed NC Act Listed Special Least Concern Species Present .

4.2.2.4. Weeds and Pests

Distribution of Weeds of National Significance (WoNS), Class 1, 2 and 3 species declared under the *LP Act* and pest fauna on site has been mapped based on field survey results. Appendix I: Ground Truthed Weeds and Pest Fauna Present is a schematic of the field surveyed weeds and pests.

Pest flora and fauna encountered during the field survey are listed in Table 10.

Table 10: Pest Flora Recorded on Site

Scientific Name	Common Name	Status*	Area of Occurrence
<i>Opuntia tomentosa</i>	velvety tree pear	Weed of National Significance (WoNS), <i>LP Act</i> Class 2	Scattered throughout site at less than 1% cover.
<i>Opuntia stricta</i>	prickly pear	WoNS, <i>LP Act</i> Class 2.	Scattered throughout site at less than 1% cover.

*Status taken from *LP Act* and Australian Weeds Committee (2012).

4.2.3. Disturbance

The following disturbances to the ecological values of the site were observed during the survey:

- Historical clearing is evident on the eastern part of the site, with regrowth vegetation now covering most of the eastern portion;
- Clearing for a gas well, gathering flowlines and access tracks has also resulted in a reduction in vegetation cover in the eastern area;
- Grazing has altered the floristic composition of the vegetation in places, and encouraged the dispersal and establishment of weeds;
- A constructed dam on the northern boundary of the site and associated access track has resulted in loss of vegetation and altered hydrology, and created a wetland habitat that may attract wetland species; and
- Altered drainage due to the abovementioned disturbances has resulted in erosion and sedimentation in places, and, the dispersal and establishment of weeds.

5. Conclusions

The ecology survey on the site found the following ecological values:

- Two EPBC listed marine bird species; black-faced cuckoo-shrike (*Coracina novaehollandiae*) and Horsfield's bronze cuckoo (*Chalcites basalis*)
- One OC RE 11.3.4
- Four NCaP REs; 11.5.1, 11.7.2, 11.7.4, and 11.7.7
- Three *NC Act* SLC species; Black orchard (*Cymbidium canaliculatum*), Mulga fern (*Cheilanthes sieberi*); and bristly cloak fern (*C. distans*)
- Two *LP Act* declared Class 2 weeds, also classed as WoNS; velvety tree pear (*Opuntia tomentosa*) and prickly pear (*O. stricta*).

It is recommended that the findings in this report are considered during detailed development planning such that disturbance to the ecological values of the site and locality may be avoided wherever practical. Where disturbance is unavoidable, impact mitigation measures are to be implemented in accordance with the approved site environmental management plan and regulatory approval conditions.

Appendix A: Site Location and Survey Points

Legend

Survey Location

- Vegetation Community Survey Point
- Habitat Survey Point

Queensland Waterways Zoning

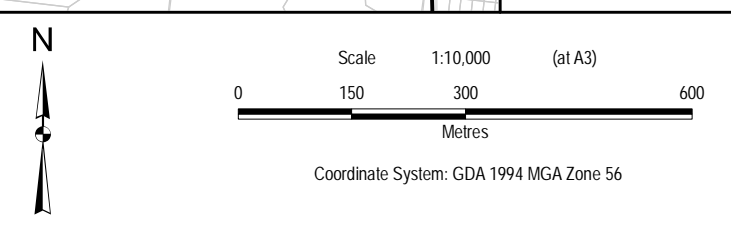
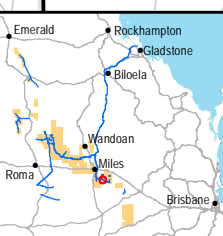
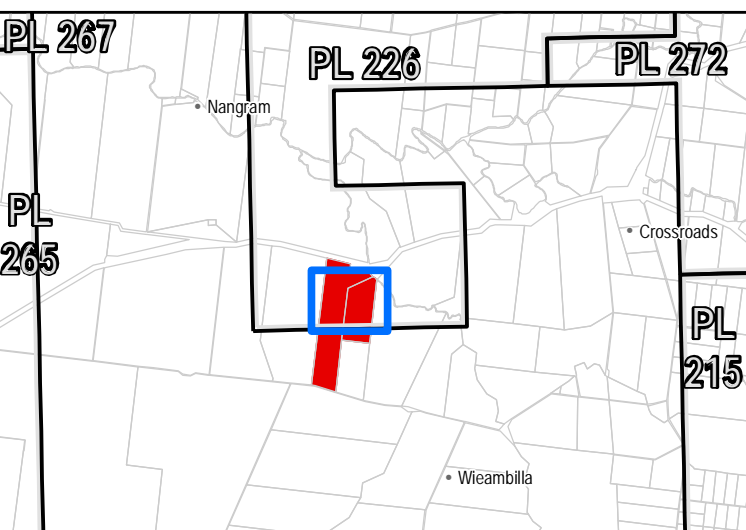
Risk of Impact

- 1 - Low
- 4 - Major

Boundary

- Survey Area
- Site Location
- Surveyed Cadastral
- Permit

Source Information:
 © State of Queensland (Department of Natural Resources and Mines) 2015
 © State of Queensland (Department of Agriculture, Fisheries and Forestry) 2015.
 © WorldView2 (2014)
 Information presented on this product is distributed by the Queensland Government as an information source only. While every care is taken to ensure the accuracy of this data the State of Queensland make no statements, representations or warranties about the accuracy, reliability, completeness or suitability of any information contained in this product. The State of Queensland disclaims all responsibility for information contained in this product and all liability (including without limitation, liability in negligence) for all expenses, losses, damages and costs you may incur as a result of the information being inaccurate or incomplete on any way for any reason.



Rev	Description	Drawn	Check	QA	Approved	Date
0	Issued For Use	ALM	GP	SAW	CD	09/02/2015
A	Issued For Review	ALM	GP	SAW	CD	06/01/2015



Appendix A:
 Site Location and Survey Points
 Date: 9 February 2015

Map Number	Doc No	Rev
1 of 1	Q-4100-15-RP-038	0
Map ID GISWR_24917		

Appendix B: Results of EPBC Protected Matters Search Tool

The search of the EBPC protected matters database was carried out on 30/12/2014.



EPBC Act Protected Matters Report

This report provides general guidance on matters of national environmental significance and other matters protected by the EPBC Act in the area you have selected.

Information on the coverage of this report and qualifications on data supporting this report are contained in the caveat at the end of the report.

Information is available about [Environment Assessments](#) and the EPBC Act including significance guidelines, forms and application process details.

Report created: 30/12/14 11:24:52

[Summary](#)

[Details](#)

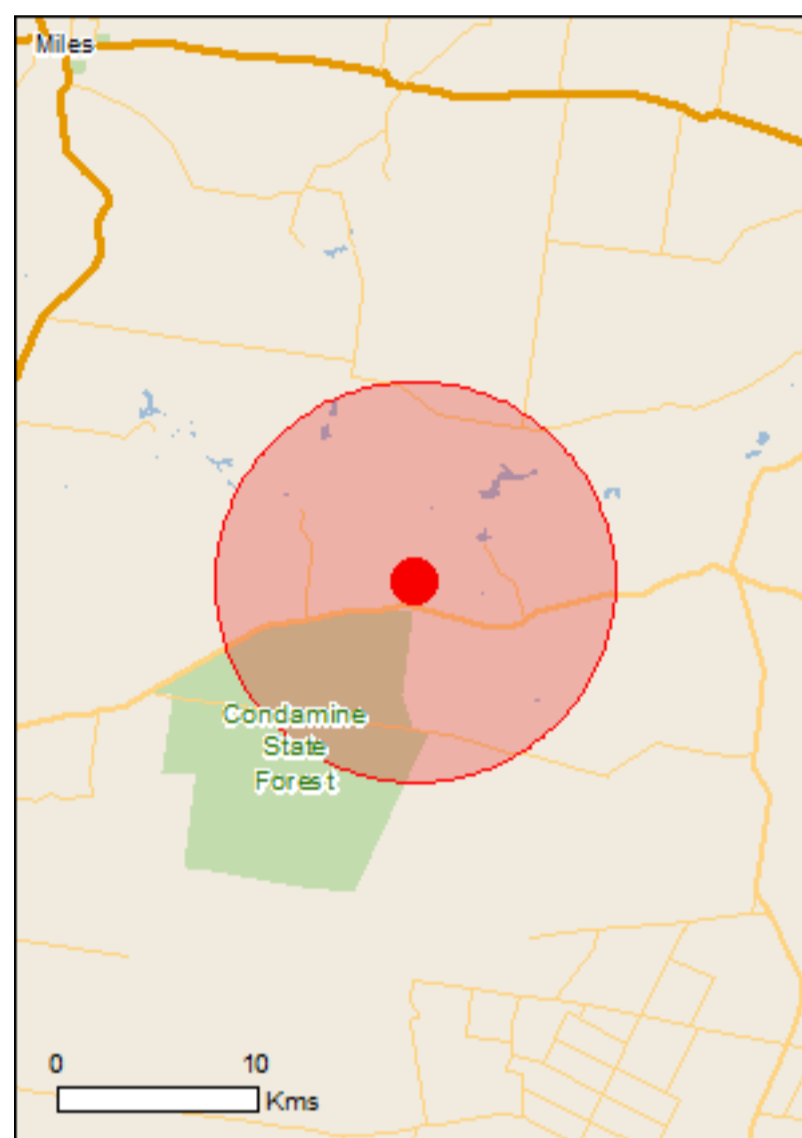
[Matters of NES](#)

[Other Matters Protected by the EPBC Act](#)

[Extra Information](#)

[Caveat](#)

[Acknowledgements](#)



This map may contain data which are ©Commonwealth of Australia (Geoscience Australia), ©PSMA 2010

[Coordinates](#)

Buffer: 10.0Km



Summary

Matters of National Environmental Significance

This part of the report summarises the matters of national environmental significance that may occur in, or may relate to, the area you nominated. Further information is available in the detail part of the report, which can be accessed by scrolling or following the links below. If you are proposing to undertake an activity that may have a significant impact on one or more matters of national environmental significance then you should consider the [Administrative Guidelines on Significance](#).

World Heritage Properties:	None
National Heritage Places:	None
Wetlands of International Importance:	1
Great Barrier Reef Marine Park:	None
Commonwealth Marine Areas:	None
Listed Threatened Ecological Communities:	4
Listed Threatened Species:	17
Listed Migratory Species:	10

Other Matters Protected by the EPBC Act

This part of the report summarises other matters protected under the Act that may relate to the area you nominated. Approval may be required for a proposed activity that significantly affects the environment on Commonwealth land, when the action is outside the Commonwealth land, or the environment anywhere when the action is taken on Commonwealth land. Approval may also be required for the Commonwealth or Commonwealth agencies proposing to take an action that is likely to have a significant impact on the environment anywhere.

The EPBC Act protects the environment on Commonwealth land, the environment from the actions taken on Commonwealth land, and the environment from actions taken by Commonwealth agencies. As [heritage values](#) of a place are part of the 'environment', these aspects of the EPBC Act protect the Commonwealth Heritage values of a Commonwealth Heritage place and the heritage values of a place on the Register of the National Estate.

This part of the report summarises other matters protected under the Act that may relate to the area you nominated. Approval may be required for a proposed activity that significantly affects the environment on Commonwealth land, when the action is outside the Commonwealth land, or the environment anywhere when the action is taken on Commonwealth land. Approval may also be required for the Commonwealth or Commonwealth agencies proposing to take an action that is likely to have a significant impact on the environment anywhere.

A [permit](#) may be required for activities in or on a Commonwealth area that may affect a member of a listed threatened species or ecological community, a member of a listed migratory species, whales and other cetaceans, or a member of a listed marine species.

Commonwealth Land:	None
Commonwealth Heritage Places:	None
Listed Marine Species:	12
Whales and Other Cetaceans:	None
Critical Habitats:	None
Commonwealth Reserves Terrestrial:	None
Commonwealth Reserves Marine	None

Extra Information

This part of the report provides information that may also be relevant to the area you have nominated.

Place on the RNE:	None
State and Territory Reserves:	None
Regional Forest Agreements:	None
Invasive Species:	21
Nationally Important Wetlands:	None
Key Ecological Features (Marine)	None

Details

Matters of National Environmental Significance

Wetlands of International Importance (RAMSAR)	[Resource Information]
Name	Proximity
Narran lake nature reserve	Upstream from Ramsar

Listed Threatened Ecological Communities

[\[Resource Information \]](#)

For threatened ecological communities where the distribution is well known, maps are derived from recovery plans, State vegetation maps, remote sensing imagery and other sources. Where threatened ecological community distributions are less well known, existing vegetation maps and point location data are used to produce indicative distribution maps.

Name	Status	Type of Presence
Brigalow (Acacia harpophylla dominant and co-dominant)	Endangered	Community known to occur within area
Coolibah - Black Box Woodlands of the Darling Riverine Plains and the Brigalow Belt South Bioregions	Endangered	Community likely to occur within area
Natural grasslands on basalt and fine-textured alluvial plains of northern New South Wales and southern Queensland	Critically Endangered	Community likely to occur within area
Weeping Myall Woodlands	Endangered	Community likely to occur within area

Listed Threatened Species

[\[Resource Information \]](#)

Name	Status	Type of Presence
Birds		
Erythrotriorchis radiatus Red Goshawk [942]	Vulnerable	Species or species habitat likely to occur within area
Geophaps scripta scripta Squatter Pigeon (southern) [64440]	Vulnerable	Species or species habitat likely to occur within area
Lathamus discolor Swift Parrot [744]	Endangered	Species or species habitat may occur within area
Rostratula australis Australian Painted Snipe [77037]	Endangered	Species or species habitat likely to occur within area
Fish		
Bidyanus bidyanus Silver Perch, Bidyan [76155]	Critically Endangered	Species or species habitat may occur within

Name	Status	Type of Presence area
Maccullochella peelii Murray Cod [66633]	Vulnerable	Species or species habitat may occur within area
Mammals		
Chalinobus dwyeri Large-eared Pied Bat, Large Pied Bat [183]	Vulnerable	Species or species habitat likely to occur within area
Nyctophilus corbeni South-eastern Long-eared Bat [83395]	Vulnerable	Species or species habitat known to occur within area
Phascolarctos cinereus (combined populations of Qld, NSW and the ACT) Koala (combined populations of Queensland, New South Wales and the Australian Capital Territory) [85104]	Vulnerable	Species or species habitat known to occur within area
Plants		
Cadellia pentastylis Ooline [9828]	Vulnerable	Species or species habitat likely to occur within area
Homopholis belsonii Belson's Panic [2406]	Vulnerable	Species or species habitat may occur within area
Westringia parvifolia [4822]	Vulnerable	Species or species habitat likely to occur within area
Reptiles		
Anomalopus mackayi Five-clawed Worm-skink, Long-legged Worm-skink [25934]	Vulnerable	Species or species habitat may occur within area
Delma torquata Collared Delma [1656]	Vulnerable	Species or species habitat may occur within area
Egernia rugosa Yakka Skink [1420]	Vulnerable	Species or species habitat known to occur within area
Furina dunmalli Dunmall's Snake [59254]	Vulnerable	Species or species habitat may occur within area
Tymanocryptis pinguicolla Grassland Earless Dragon [66727]	Endangered	Species or species habitat may occur within area
Listed Migratory Species		[Resource Information]
* Species is listed under a different scientific name on the EPBC Act - Threatened Species list.		
Name	Threatened	Type of Presence
Migratory Marine Birds		
Apus pacificus Fork-tailed Swift [678]		Species or species habitat likely to occur within area
Migratory Terrestrial Species		
Haliaeetus leucogaster White-bellied Sea-Eagle [943]		Species or species habitat known to occur within area
Hirundapus caudacutus White-throated Needletail [682]		Species or species habitat may occur within area
Merops ornatus Rainbow Bee-eater [670]		Species or species

Name	Threatened	Type of Presence
Myiagra cyanoleuca Satin Flycatcher [612]		habitat may occur within area Species or species habitat may occur within area
Rhipidura rufifrons Rufous Fantail [592]		Species or species habitat may occur within area
Migratory Wetlands Species		
Ardea alba Great Egret, White Egret [59541]		Breeding known to occur within area
Ardea ibis Cattle Egret [59542]		Species or species habitat likely to occur within area
Gallinago hardwickii Latham's Snipe, Japanese Snipe [863]		Species or species habitat may occur within area
Rostratula benghalensis (sensu lato) Painted Snipe [889]	Endangered*	Species or species habitat likely to occur within area

Other Matters Protected by the EPBC Act

Listed Marine Species		[Resource Information]
* Species is listed under a different scientific name on the EPBC Act - Threatened Species list.		
Name	Threatened	Type of Presence
Birds		
Anseranas semipalmata Magpie Goose [978]		Species or species habitat may occur within area
Apus pacificus Fork-tailed Swift [678]		Species or species habitat likely to occur within area
Ardea alba Great Egret, White Egret [59541]		Breeding known to occur within area
Ardea ibis Cattle Egret [59542]		Species or species habitat likely to occur within area
Gallinago hardwickii Latham's Snipe, Japanese Snipe [863]		Species or species habitat may occur within area
Haliaeetus leucogaster White-bellied Sea-Eagle [943]		Species or species habitat known to occur within area
Hirundapus caudacutus White-throated Needletail [682]		Species or species habitat may occur within area
Lathamus discolor Swift Parrot [744]	Endangered	Species or species habitat may occur within area
Merops ornatus Rainbow Bee-eater [670]		Species or species habitat may occur within area

Name	Threatened	Type of Presence
Myiagra cyanoleuca Satin Flycatcher [612]		Species or species habitat may occur within area
Rhipidura rufifrons Rufous Fantail [592]		Species or species habitat may occur within area
Rostratula benghalensis (sensu lato) Painted Snipe [889]	Endangered*	Species or species habitat likely to occur within area

Extra Information

Invasive Species

[[Resource Information](#)]

Weeds reported here are the 20 species of national significance (WoNS), along with other introduced plants that are considered by the States and Territories to pose a particularly significant threat to biodiversity. The following feral animals are reported: Goat, Red Fox, Cat, Rabbit, Pig, Water Buffalo and Cane Toad. Maps from Landscape Health Project, National Land and Water Resources Audit, 2001.

Name	Status	Type of Presence
Birds		
Acridotheres tristis Common Myna, Indian Myna [387]		Species or species habitat likely to occur within area
Columba livia Rock Pigeon, Rock Dove, Domestic Pigeon [803]		Species or species habitat likely to occur within area
Lonchura punctulata Nutmeg Mannikin [399]		Species or species habitat likely to occur within area
Passer domesticus House Sparrow [405]		Species or species habitat likely to occur within area
Streptopelia chinensis Spotted Turtle-Dove [780]		Species or species habitat likely to occur within area
Sturnus vulgaris Common Starling [389]		Species or species habitat likely to occur within area
Frogs		
Rhinella marina Cane Toad [83218]		Species or species habitat likely to occur within area
Mammals		
Canis lupus familiaris Domestic Dog [82654]		Species or species habitat likely to occur within area

Name	Status	Type of Presence
Felis catus Cat, House Cat, Domestic Cat [19]		Species or species habitat likely to occur within area
Lepus capensis Brown Hare [127]		Species or species habitat likely to occur within area
Mus musculus House Mouse [120]		Species or species habitat likely to occur within area
Oryctolagus cuniculus Rabbit, European Rabbit [128]		Species or species habitat likely to occur within area
Rattus rattus Black Rat, Ship Rat [84]		Species or species habitat likely to occur within area
Sus scrofa Pig [6]		Species or species habitat likely to occur within area
Vulpes vulpes Red Fox, Fox [18]		Species or species habitat likely to occur within area
Plants		
Hymenachne amplexicaulis Hymenachne, Olive Hymenachne, Water Stargrass, West Indian Grass, West Indian Marsh Grass [31754]		Species or species habitat likely to occur within area
Opuntia spp. Prickly Pears [82753]		Species or species habitat likely to occur within area
Parkinsonia aculeata Parkinsonia, Jerusalem Thorn, Jelly Bean Tree, Horse Bean [12301]		Species or species habitat likely to occur within area
Parthenium hysterophorus Parthenium Weed, Bitter Weed, Carrot Grass, False Ragweed [19566]		Species or species habitat likely to occur within area
Pinus radiata Radiata Pine Monterey Pine, Insignis Pine, Wilding Pine [20780]		Species or species habitat may occur within area
Salvinia molesta Salvinia, Giant Salvinia, Aquarium Watermoss, Kariba Weed [13665]		Species or species habitat likely to occur within area

Coordinates

-26.874 150.343

Caveat

The information presented in this report has been provided by a range of data sources as acknowledged at the end of the report.

This report is designed to assist in identifying the locations of places which may be relevant in determining obligations under the Environment Protection and Biodiversity Conservation Act 1999. It holds mapped locations of World Heritage and Register of National Estate properties, Wetlands of International Importance, Commonwealth and State/Territory reserves, listed threatened, migratory and marine species and listed threatened ecological communities. Mapping of Commonwealth land is not complete at this stage. Maps have been collated from a range of sources at various resolutions.

Not all species listed under the EPBC Act have been mapped (see below) and therefore a report is a general guide only. Where available data supports mapping, the type of presence that can be determined from the data is indicated in general terms. People using this information in making a referral may need to consider the qualifications below and may need to seek and consider other information sources.

For threatened ecological communities where the distribution is well known, maps are derived from recovery plans, State vegetation maps, remote sensing imagery and other sources. Where threatened ecological community distributions are less well known, existing vegetation maps and point location data are used to produce indicative distribution maps.

For species where the distributions are well known, maps are digitised from sources such as recovery plans and detailed habitat studies. Where appropriate, core breeding, foraging and roosting areas are indicated under 'type of presence'. For species whose distributions are less well known, point locations are collated from government wildlife authorities, museums, and non-government organisations; bioclimatic distribution models are generated and these validated by experts. In some cases, the distribution maps are based solely on expert knowledge.

Only selected species covered by the following provisions of the EPBC Act have been mapped:

- migratory and
- marine

The following species and ecological communities have not been mapped and do not appear in reports produced from this database:

- threatened species listed as extinct or considered as vagrants
- some species and ecological communities that have only recently been listed
- some terrestrial species that overfly the Commonwealth marine area
- migratory species that are very widespread, vagrant, or only occur in small numbers

The following groups have been mapped, but may not cover the complete distribution of the species:

- non-threatened seabirds which have only been mapped for recorded breeding sites
- seals which have only been mapped for breeding sites near the Australian continent

Such breeding sites may be important for the protection of the Commonwealth Marine environment.

Acknowledgements

This database has been compiled from a range of data sources. The department acknowledges the following custodians who have contributed valuable data and advice:

- [-Department of Environment, Climate Change and Water, New South Wales](#)
- [-Department of Sustainability and Environment, Victoria](#)
- [-Department of Primary Industries, Parks, Water and Environment, Tasmania](#)
- [-Department of Environment and Natural Resources, South Australia](#)
- [-Parks and Wildlife Service NT, NT Dept of Natural Resources, Environment and the Arts](#)
- [-Environmental and Resource Management, Queensland](#)
- [-Department of Environment and Conservation, Western Australia](#)
- [-Department of the Environment, Climate Change, Energy and Water](#)
- [-Birds Australia](#)
- [-Australian Bird and Bat Banding Scheme](#)
- [-Australian National Wildlife Collection](#)
- Natural history museums of Australia
- [-Museum Victoria](#)
- [-Australian Museum](#)
- [-SA Museum](#)
- [-Queensland Museum](#)
- [-Online Zoological Collections of Australian Museums](#)
- [-Queensland Herbarium](#)
- [-National Herbarium of NSW](#)
- [-Royal Botanic Gardens and National Herbarium of Victoria](#)
- [-Tasmanian Herbarium](#)
- [-State Herbarium of South Australia](#)
- [-Northern Territory Herbarium](#)
- [-Western Australian Herbarium](#)
- [-Australian National Herbarium, Atherton and Canberra](#)
- [-University of New England](#)
- [-Ocean Biogeographic Information System](#)
- [-Australian Government, Department of Defence](#)
- [-State Forests of NSW](#)
- [-Geoscience Australia](#)
- [-CSIRO](#)
- Other groups and individuals

The Department is extremely grateful to the many organisations and individuals who provided expert advice and information on numerous draft distributions.

Please feel free to provide feedback via the [Contact Us](#) page.

Appendix C: Wildlife Online Database Search Results

The search of the Wildlife Online database was carried out on 30/12/2014.



Queensland Government

Wildlife Online Extract

Search Criteria: Species List for a Specified Point

Species: All

Type: All

Status: All

Records: All

Date: All

Latitude: -26.874

Longitude: 150.343

Distance: 10

Email: ted.stone@originenergy.com.au

Date submitted: Tuesday 30 Dec 2014 10:22:49

Date extracted: Tuesday 30 Dec 2014 10:30:02

The number of records retrieved = 441

Disclaimer

As the DSITIA is still in a process of collating and vetting data, it is possible the information given is not complete. The information provided should only be used for the project for which it was requested and it should be appropriately acknowledged as being derived from Wildlife Online when it is used.

The State of Queensland does not invite reliance upon, nor accept responsibility for this information. Persons should satisfy themselves through independent means as to the accuracy and completeness of this information.

No statements, representations or warranties are made about the accuracy or completeness of this information. The State of Queensland disclaims all responsibility for this information and all liability (including without limitation, liability in negligence) for all expenses, losses, damages and costs you may incur as a result of the information being inaccurate or incomplete in any way for any reason.

Kingdom	Class	Family	Scientific Name	Common Name	I	Q	A	Records
animals	amphibians	Bufonidae	<i>Rhinella marina</i>	cane toad	Y			8
animals	amphibians	Hylidae	<i>Litoria caerulea</i>	common green treefrog		C		17
animals	amphibians	Hylidae	<i>Cyclorana cultripes</i>	grassland collared frog		C		1
animals	amphibians	Hylidae	<i>Litoria latopalmata</i>	broad palmed rocketfrog		C		5/1
animals	amphibians	Hylidae	<i>Cyclorana alboguttata</i>	greenstripe frog		C		4
animals	amphibians	Hylidae	<i>Cyclorana novaehollandiae</i>	eastern snapping frog		C		12
animals	amphibians	Hylidae	<i>Litoria rubella</i>	ruddy treefrog		C		6
animals	amphibians	Limnodynastidae	<i>Limnodynastes terraereginae</i>	scarlet sided pobblebonk		C		1
animals	amphibians	Limnodynastidae	<i>Notaden bennettii</i>	holy cross frog		C		1
animals	amphibians	Limnodynastidae	<i>Limnodynastes salmini</i>	salmon striped frog		C		10
animals	amphibians	Limnodynastidae	<i>Platyplectrum ornatum</i>	ornate burrowing frog		C		6
animals	amphibians	Limnodynastidae	<i>Limnodynastes tasmaniensis</i>	spotted grassfrog		C		22
animals	amphibians	Myobatrachidae	<i>Uperoleia rugosa</i>	chubby gungan		C		6/1
animals	birds	Acanthizidae	<i>Acanthiza nana</i>	yellow thornbill		C		3
animals	birds	Acanthizidae	<i>Smicronis brevirostris</i>	weebill		C		26
animals	birds	Acanthizidae	<i>Aphelocephala leucopsis</i>	southern whiteface		C		1
animals	birds	Acanthizidae	<i>Chthonicola sagittata</i>	speckled warbler		C		7
animals	birds	Acanthizidae	<i>Acanthiza uropygialis</i>	chestnut-rumped thornbill		C		3
animals	birds	Acanthizidae	<i>Acanthiza chrysorrhoa</i>	yellow-rumped thornbill		C		6
animals	birds	Acanthizidae	<i>Gerygone albogularis</i>	white-throated gerygone		C		5
animals	birds	Acanthizidae	<i>Acanthiza reguloides</i>	buff-rumped thornbill		C		8
animals	birds	Acanthizidae	<i>Acanthiza lineata</i>	striated thornbill		C		1
animals	birds	Acanthizidae	<i>Acanthiza apicalis</i>	inland thornbill		C		10
animals	birds	Accipitridae	<i>Lophoictinia isura</i>	square-tailed kite		C		5
animals	birds	Accipitridae	<i>Elanus axillaris</i>	black-shouldered kite		C		1
animals	birds	Accipitridae	<i>Aquila audax</i>	wedge-tailed eagle		C		2
animals	birds	Accipitridae	<i>Hieraaetus morphnoides</i>	little eagle		C		4
animals	birds	Accipitridae	<i>Haliastur sphenurus</i>	whistling kite		C		4
animals	birds	Accipitridae	<i>Accipiter fasciatus</i>	brown goshawk		C		1
animals	birds	Acrocephalidae	<i>Acrocephalus australis</i>	Australian reed-warbler		SL		2
animals	birds	Aegothelidae	<i>Aegotheles cristatus</i>	Australian owlet-nightjar		C		7
animals	birds	Anatidae	<i>Anas gracilis</i>	grey teal		C		2
animals	birds	Anatidae	<i>Dendrocygna eytoni</i>	plumed whistling-duck		C		1
animals	birds	Anatidae	<i>Chenonetta jubata</i>	Australian wood duck		C		2
animals	birds	Anatidae	<i>Anas superciliosa</i>	Pacific black duck		C		2
animals	birds	Anatidae	<i>Aythya australis</i>	hardhead		C		1
animals	birds	Anhingidae	<i>Anhinga novaehollandiae</i>	Australasian darter		C		2
animals	birds	Apodidae	<i>Hirundapus caudacutus</i>	white-throated needletail		SL		1
animals	birds	Ardeidae	<i>Egretta novaehollandiae</i>	white-faced heron		C		2
animals	birds	Ardeidae	<i>Nycticorax caledonicus</i>	Nankeen night-heron		C		1
animals	birds	Ardeidae	<i>Egretta garzetta</i>	little egret		C		1
animals	birds	Ardeidae	<i>Ardea pacifica</i>	white-necked heron		C		1
animals	birds	Ardeidae	<i>Ardea modesta</i>	eastern great egret		SL		2
animals	birds	Artamidae	<i>Artamus cyanopterus</i>	dusky woodswallow		C		1
animals	birds	Artamidae	<i>Cracticus torquatus</i>	grey butcherbird		C		15
animals	birds	Artamidae	<i>Artamus leucorhynchus</i>	white-breasted woodswallow		C		2

Kingdom	Class	Family	Scientific Name	Common Name	I	Q	A	Records
animals	birds	Artamidae	<i>Cracticus nigrogularis</i>	piebald butcherbird		C		2
animals	birds	Artamidae	<i>Strepera graculina</i>	piebald currawong		C		6
animals	birds	Artamidae	<i>Cracticus tibicen</i>	Australian magpie		C		7
animals	birds	Artamidae	<i>Artamus minor</i>	little woodswallow		C		2
animals	birds	Cacatuidae	<i>Cacatua galerita</i>	sulphur-crested cockatoo		C		11
animals	birds	Cacatuidae	<i>Cacatua sanguinea</i>	little corella		C		3
animals	birds	Cacatuidae	<i>Nymphicus hollandicus</i>	cockatiel		C		6
animals	birds	Cacatuidae	<i>Eolophus roseicapillus</i>	galah		C		11
animals	birds	Cacatuidae	<i>Calyptorhynchus funereus</i>	yellow-tailed black-cockatoo		C		3
animals	birds	Cacatuidae	<i>Calyptorhynchus lathami</i>	glossy black-cockatoo		V		3
animals	birds	Cacatuidae	<i>Calyptorhynchus banksii</i>	red-tailed black-cockatoo		C		1
animals	birds	Campephagidae	<i>Coracina novaehollandiae</i>	black-faced cuckoo-shrike		C		7
animals	birds	Campephagidae	<i>Coracina tenuirostris</i>	cicadabird		SL		4
animals	birds	Campephagidae	<i>Coracina papuensis</i>	white-bellied cuckoo-shrike		C		1
animals	birds	Campephagidae	<i>Lalage sueurii</i>	white-winged triller		C		2
animals	birds	Campephagidae	<i>Coracina maxima</i>	ground cuckoo-shrike		C		1
animals	birds	Casuariidae	<i>Dromaius novaehollandiae</i>	emu		C		10
animals	birds	Charadriidae	<i>Vanellus miles novaehollandiae</i>	masked lapwing (southern subspecies)		C		3
animals	birds	Charadriidae	<i>Vanellus miles</i>	masked lapwing		C		1
animals	birds	Charadriidae	<i>Vanellus tricolor</i>	banded lapwing		C		1
animals	birds	Charadriidae	<i>Euseyornis melanops</i>	black-fronted dotterel		C		3
animals	birds	Ciconiidae	<i>Ephippiorhynchus asiaticus</i>	black-necked stork		C		1
animals	birds	Cisticolidae	<i>Cisticola exilis</i>	golden-headed cisticola		C		1
animals	birds	Climacteridae	<i>Climacteris picumnus</i>	brown tree creeper		C		2
animals	birds	Climacteridae	<i>Cormobates leucophaea</i>	white-throated tree creeper		C		1
animals	birds	Climacteridae	<i>Cormobates leucophaea metastasis</i>	white-throated tree creeper (southern)		C		1
animals	birds	Columbidae	<i>Phaps chalcoptera</i>	common bronzewing		C		4
animals	birds	Columbidae	<i>Chalcophaps indica</i>	emerald dove		C		1
animals	birds	Columbidae	<i>Geopelia humeralis</i>	bar-shouldered dove		C		6
animals	birds	Columbidae	<i>Ocyphaps lophotes</i>	crested pigeon		C		7
animals	birds	Columbidae	<i>Geopelia striata</i>	peaceful dove		C		8
animals	birds	Columbidae	<i>Geopelia cuneata</i>	diamond dove		C		1
animals	birds	Coraciidae	<i>Eurystomus orientalis</i>	dollarbird		C		2
animals	birds	Corcoracidae	<i>Corcorax melanorhamphos</i>	white-winged chough		C		3
animals	birds	Corcoracidae	<i>Struthidea cinerea</i>	apostlebird		C		5
animals	birds	Corvidae	<i>Corvus coronoides</i>	Australian raven		C		7/1
animals	birds	Corvidae	<i>Corvus bennetti</i>	little crow		C		1
animals	birds	Corvidae	<i>Corvus orru</i>	Torresian crow		C		10/1
animals	birds	Corvidae	<i>Corvus sp.</i>					4
animals	birds	Cuculidae	<i>Chalcites basalis</i>	Horsfield's bronze-cuckoo		C		2
animals	birds	Cuculidae	<i>Chalcites osculans</i>	black-eared cuckoo		C		2
animals	birds	Estrildidae	<i>Taeniopygia guttata</i>	zebra finch		C		1
animals	birds	Estrildidae	<i>Stagonopleura guttata</i>	diamond firetail		C		1
animals	birds	Estrildidae	<i>Taeniopygia bichenovii</i>	double-barred finch		C		4
animals	birds	Eurostopodidae	<i>Eurostopodus mystacalis</i>	white-throated nightjar		C		3
animals	birds	Eurostopodidae	<i>Eurostopodus argus</i>	spotted nightjar		C		1

Kingdom	Class	Family	Scientific Name	Common Name	I	Q	A	Records
animals	birds	Falconidae	<i>Falco berigora</i>	brown falcon		C		1
animals	birds	Falconidae	<i>Falco cenchroides</i>	Nankeen kestrel		C		3
animals	birds	Falconidae	<i>Falco subniger</i>	black falcon		C		1
animals	birds	Halcyonidae	<i>Todiramphus sanctus</i>	sacred kingfisher		C		4
animals	birds	Halcyonidae	<i>Dacelo novaeguineae</i>	laughing kookaburra		C		8
animals	birds	Halcyonidae	<i>Todiramphus macleayii</i>	forest kingfisher		C		1
animals	birds	Hirundinidae	<i>Petrochelidon ariel</i>	fairy martin		C		1
animals	birds	Hirundinidae	<i>Hirundo neoxena</i>	welcome swallow		C		1
animals	birds	Hirundinidae	<i>Petrochelidon nigricans</i>	tree martin		C		3
animals	birds	Maluridae	<i>Malurus cyaneus</i>	superb fairy-wren		C		13
animals	birds	Maluridae	<i>Malurus leucopterus</i>	white-winged fairy-wren		C		3
animals	birds	Maluridae	<i>Malurus lamberti</i>	variegated fairy-wren		C		3
animals	birds	Megapodiidae	<i>Alectura lathami</i>	Australian brush-turkey		C		1
animals	birds	Meliphagidae	<i>Philemon corniculatus</i>	noisy friarbird		C		16
animals	birds	Meliphagidae	<i>Manorina melanocephala</i>	noisy miner		C		23
animals	birds	Meliphagidae	<i>Myzomela sanguinolenta</i>	scarlet honeyeater		C		1
animals	birds	Meliphagidae	<i>Philemon citreogularis</i>	little friarbird		C		10
animals	birds	Meliphagidae	<i>Ptilotula penicillatus</i>	white-plumed honeyeater		C		4
animals	birds	Meliphagidae	<i>Acanthagenys rufogularis</i>	spiny-cheeked honeyeater		C		10
animals	birds	Meliphagidae	<i>Plectorhyncha lanceolata</i>	striped honeyeater		C		21
animals	birds	Meliphagidae	<i>Melithreptus brevirostris</i>	brown-headed honeyeater		C		5
animals	birds	Meliphagidae	<i>Grantiella picta</i>	painted honeyeater		V		5
animals	birds	Meliphagidae	<i>Caligavis chrysops</i>	yellow-faced honeyeater		C		30
animals	birds	Meliphagidae	<i>Entomyzon cyanotis</i>	blue-faced honeyeater		C		3
animals	birds	Meliphagidae	<i>Manorina flavigula</i>	yellow-throated miner		C		3
animals	birds	Meliphagidae	<i>Epthianura tricolor</i>	crimson chat		C		1
animals	birds	Meliphagidae	<i>Gavicalis virescens</i>	singing honeyeater		C		1
animals	birds	Meliphagidae	<i>Lichmera indistincta</i>	brown honeyeater		C		5
animals	birds	Meliphagidae	<i>Melithreptus gularis</i>	black-chinned honeyeater		NT		1
animals	birds	Meliphagidae	<i>Melithreptus lunatus</i>	white-naped honeyeater		C		1
animals	birds	Meliphagidae	<i>Nesoptilotis leucotis</i>	white-eared honeyeater		C		7
animals	birds	Meropidae	<i>Merops ornatus</i>	rainbow bee-eater		SL		7
animals	birds	Monarchidae	<i>Myiagra inquieta</i>	restless flycatcher		C		3
animals	birds	Monarchidae	<i>Myiagra cyanoleuca</i>	satin flycatcher		SL		1
animals	birds	Monarchidae	<i>Grallina cyanoleuca</i>	magpie-lark		C		7
animals	birds	Monarchidae	<i>Myiagra rubecula</i>	leaden flycatcher		C		8
animals	birds	Motacillidae	<i>Anthus novaeseelandiae</i>	Australasian pipit		C		1
animals	birds	Nectariniidae	<i>Dicaeum hirundinaceum</i>	mistletoebird		C		21
animals	birds	Neosittidae	<i>Daphoenositta chrysoptera</i>	varied sittella		C		4
animals	birds	Oriolidae	<i>Sphecotheres vieilloti</i>	Australasian figbird		C		1
animals	birds	Otididae	<i>Ardeotis australis</i>	Australian bustard		C		2
animals	birds	Pachycephalidae	<i>Pachycephala rufiventris</i>	rufous whistler		C		38
animals	birds	Pachycephalidae	<i>Oreoica gutturalis</i>	crested bellbird		C		1
animals	birds	Pachycephalidae	<i>Colluricincla harmonica</i>	grey shrike-thrush		C		19
animals	birds	Pardalotidae	<i>Pardalotus punctatus</i>	spotted pardalote		C		3
animals	birds	Pardalotidae	<i>Pardalotus striatus</i>	striated pardalote		C		9

Kingdom	Class	Family	Scientific Name	Common Name	I	Q	A	Records
animals	birds	Pelecanidae	<i>Pelecanus conspicillatus</i>	Australian pelican		C		5
animals	birds	Petroicidae	<i>Microeca fascinans</i>	jacky winter		C		11
animals	birds	Petroicidae	<i>Melanodryas cucullata</i>	hooded robin		C		2
animals	birds	Petroicidae	<i>Eopsaltria australis</i>	eastern yellow robin		C		11
animals	birds	Petroicidae	<i>Petroica goodenovii</i>	red-capped robin		C		8
animals	birds	Petroicidae	<i>Petroica rosea</i>	rose robin		C		1
animals	birds	Phalacrocoracidae	<i>Phalacrocorax sulcirostris</i>	little black cormorant		C		1
animals	birds	Phalacrocoracidae	<i>Microcarbo melanoleucos</i>	little pied cormorant		C		1
animals	birds	Phalacrocoracidae	<i>Phalacrocorax carbo</i>	great cormorant		C		1
animals	birds	Phasianidae	<i>Coturnix ypsilophora</i>	brown quail		C		1
animals	birds	Phasianidae	<i>Coturnix pectoralis</i>	stubble quail		C		1
animals	birds	Podargidae	<i>Podargus strigoides</i>	tawny frogmouth		C		6
animals	birds	Podicipedidae	<i>Tachybaptus novaehollandiae</i>	Australasian grebe		C		1
animals	birds	Pomatostomidae	<i>Pomatostomus temporalis</i>	grey-crowned babbler		C		12
animals	birds	Psittacidae	<i>Platycercus adscitus</i>	pale-headed rosella		C		11
animals	birds	Psittacidae	<i>Trichoglossus haematodus moluccanus</i>	rainbow lorikeet		C		1
animals	birds	Psittacidae	<i>Trichoglossus chlorolepidotus</i>	scaly-breasted lorikeet		C		2
animals	birds	Psittacidae	<i>Aprosmictus erythropterus</i>	red-winged parrot		C		5
animals	birds	Psittacidae	<i>Northiella haematogaster</i>	blue bonnet		C		1
animals	birds	Psittacidae	<i>Melopsittacus undulatus</i>	budgerigar		C		1
animals	birds	Psittacidae	<i>Psephotus haematonotus</i>	red-rumped parrot		C		1
animals	birds	Psittacidae	<i>Glossopsitta pusilla</i>	little lorikeet		C		1
animals	birds	Psittacidae	<i>Alisterus scapularis</i>	Australian king-parrot		C		3
animals	birds	Psittacidae	<i>Platycercus elegans</i>	crimson rosella		C		1/1
animals	birds	Psittacidae	<i>Neophema pulchella</i>	turquoise parrot		C		1
animals	birds	Psittacidae	<i>Lathamus discolor</i>	swift parrot		E	E	2
animals	birds	Ptilonorhynchidae	<i>Ptilonorhynchus maculatus</i>	spotted bowerbird		C		1
animals	birds	Rallidae	<i>Fulica atra</i>	Eurasian coot		C		1
animals	birds	Rallidae	<i>Gallinula tenebrosa</i>	dusky moorhen		C		1
animals	birds	Recurvirostridae	<i>Himantopus himantopus</i>	black-winged stilt		C		1
animals	birds	Rhipiduridae	<i>Rhipidura albiscapa</i>	grey fantail		C		20
animals	birds	Rhipiduridae	<i>Rhipidura leucophrys</i>	willie wagtail		C		8
animals	birds	Scolopacidae	<i>Gallinago hardwickii</i>	Latham's snipe		SL		1
animals	birds	Strigidae	<i>Ninox boobook</i>	southern boobook		C		2
animals	birds	Threskiornithidae	<i>Platalea regia</i>	royal spoonbill		C		3
animals	birds	Threskiornithidae	<i>Platalea flavipes</i>	yellow-billed spoonbill		C		4
animals	birds	Threskiornithidae	<i>Threskiornis spinicollis</i>	straw-necked ibis		C		2
animals	birds	Threskiornithidae	<i>Threskiornis molucca</i>	Australian white ibis		C		1
animals	birds	Timaliidae	<i>Zosterops lateralis</i>	silveryeye		C		5
animals	birds	Turnicidae	<i>Turnix maculosus</i>	red-backed button-quail		C		1
animals	birds	Tytonidae	<i>Tyto novaehollandiae novaehollandiae</i>	masked owl (southern subspecies)		C		1
animals	insects	Lycaenidae	<i>Jalmenus eubulus</i>	pale imperial hairstreak		V		2
animals	mammals	Canidae	<i>Canis lupus familiaris</i>	dog	Y			2
animals	mammals	Canidae	<i>Vulpes vulpes</i>	red fox	Y			1
animals	mammals	Dasyuridae	<i>Sminthopsis macroura</i>	stripe-faced dunnart		C		1
animals	mammals	Dasyuridae	<i>Antechinus flavipes flavipes</i>	yellow-footed antechinus (south-east Queensland)		C		4/3

Kingdom	Class	Family	Scientific Name	Common Name	I	Q	A	Records
animals	mammals	Dasyuridae	<i>Planigale tenuirostris</i>	narrow-nosed planigale		C		1
animals	mammals	Dasyuridae	<i>Sminthopsis murina</i>	common dunnart		C		6
animals	mammals	Emballonuridae	<i>Saccolaimus flaviventris</i>	yellow-bellied sheath-tail bat		C		3
animals	mammals	Felidae	<i>Felis catus</i>	cat	Y			1
animals	mammals	Leporidae	<i>Oryctolagus cuniculus</i>	rabbit	Y			1
animals	mammals	Leporidae	<i>Lepus europaeus</i>	European brown hare	Y			1
animals	mammals	Macropodidae	<i>Macropus dorsalis</i>	black-striped wallaby		C		1
animals	mammals	Macropodidae	<i>Macropus robustus</i>	common wallaroo		C		1
animals	mammals	Macropodidae	<i>Macropus giganteus</i>	eastern grey kangaroo		C		18
animals	mammals	Macropodidae	<i>Macropus rufogriseus</i>	red-necked wallaby		C		4
animals	mammals	Macropodidae	<i>Wallabia bicolor</i>	swamp wallaby		C		8
animals	mammals	Molossidae	<i>Tadarida australis</i>	white-striped freetail bat		C		5
animals	mammals	Molossidae	<i>Mormopterus petersi</i>	inland free-tailed bat		C		1
animals	mammals	Muridae	<i>Hydromys chrysogaster</i>	water rat		C		1
animals	mammals	Muridae	<i>Mus musculus</i>	house mouse	Y			1
animals	mammals	Muridae	<i>Pseudomys delicatulus</i>	delicate mouse		C		4
animals	mammals	Phalangeridae	<i>Trichosurus vulpecula</i>	common brushtail possum		C		3
animals	mammals	Potoroidae	<i>Aepyprymnus rufescens</i>	rufous bettong		C		1
animals	mammals	Suidae	<i>Sus scrofa</i>	pig	Y			2
animals	mammals	Tachyglossidae	<i>Tachyglossus aculeatus</i>	short-beaked echidna		SL		1
animals	mammals	Vespertilionidae	<i>Nyctophilus geoffroyi</i>	lesser long-eared bat		C		2
animals	mammals	Vespertilionidae	<i>Nyctophilus corbeni</i>	eastern long-eared bat		V	V	3
animals	mammals	Vespertilionidae	<i>Chalinolobus gouldii</i>	Gould's wattled bat		C		5
animals	mammals	Vespertilionidae	<i>Chalinolobus picatus</i>	little pied bat		C		9
animals	mammals	Vespertilionidae	<i>Vespadelus vulturnus</i>	little forest bat		C		4
animals	mammals	Vespertilionidae	<i>Nyctophilus gouldi</i>	Gould's long-eared bat		C		6/1
animals	mammals	Vespertilionidae	<i>Scotorepens sp.</i>					1
animals	mammals	Vespertilionidae	<i>Scotorepens greyii</i>	little broad-nosed bat		C		9
animals	reptiles	Agamidae	<i>Pogona barbata</i>	bearded dragon		C		10
animals	reptiles	Colubridae	<i>Tropidonophis mairii</i>	freshwater snake		C		1
animals	reptiles	Diplodactylidae	<i>Strophurus taenicauda</i>	golden-tailed gecko		NT		26
animals	reptiles	Diplodactylidae	<i>Diplodactylus vittatus</i>	wood gecko		C		10
animals	reptiles	Diplodactylidae	<i>Lucasium steindachneri</i>	Steindachner's gecko		C		8
animals	reptiles	Diplodactylidae	<i>Diplodactylus tessellatus</i>	tessellated gecko		C		3
animals	reptiles	Elapidae	<i>Vermicella annulata</i>	bandy-bandy		C		1
animals	reptiles	Elapidae	<i>Cryptophis nigrescens</i>	eastern small-eyed snake		C		3
animals	reptiles	Elapidae	<i>Brachyuropophis australis</i>	coral snake		C		1
animals	reptiles	Elapidae	<i>Pseudonaja textilis</i>	eastern brown snake		C		1
animals	reptiles	Elapidae	<i>Demansia psammophis</i>	yellow-faced whipsnake		C		2
animals	reptiles	Elapidae	<i>Cryptophis boschmai</i>	Carpentaria whip snake		C		2
animals	reptiles	Elapidae	<i>Hemiaspis damelii</i>	grey snake		E		2
animals	reptiles	Elapidae	<i>Denisonia devisi</i>	De Vis' banded snake		C		1
animals	reptiles	Elapidae	<i>Furina diadema</i>	red-naped snake		C		4
animals	reptiles	Elapidae	<i>Suta suta</i>	myall snake		C		2
animals	reptiles	Gekkonidae	<i>Heteronotia binoei</i>	Bynoe's gecko		C		26/1
animals	reptiles	Gekkonidae	<i>Gehyra dubia</i>			C		32/1

Kingdom	Class	Family	Scientific Name	Common Name	I	Q	A	Records
animals	reptiles	Pygopodidae	<i>Paradelma orientalis</i>	brigalow scaly-foot		C		4/1
animals	reptiles	Pygopodidae	<i>Lialis burtonis</i>	Burton's legless lizard		C		4
animals	reptiles	Pygopodidae	<i>Pygopus schraderi</i>	eastern hooded scaly-foot		C		3
animals	reptiles	Scincidae	<i>Lerista punctatovittata</i>			C		4/1
animals	reptiles	Scincidae	<i>Eremiascincus fasciolatus</i>	narrow-banded sand swimmer		C		1
animals	reptiles	Scincidae	<i>Carlia munda</i>			C		1
animals	reptiles	Scincidae	<i>Carlia rubigo</i>	orange-flanked rainbow skink		C		1/1
animals	reptiles	Scincidae	<i>Egernia rugosa</i>	yakka skink		V	V	1
animals	reptiles	Scincidae	<i>Lerista timida</i>			C		6/1
animals	reptiles	Scincidae	<i>Lerista fragilis</i>			C		2/1
animals	reptiles	Scincidae	<i>Egernia striolata</i>	tree skink		C		3
animals	reptiles	Scincidae	<i>Eremiascincus sp.</i>					1
animals	reptiles	Scincidae	<i>Liopholis modesta</i>			C		1
animals	reptiles	Scincidae	<i>Ctenotus spaldingi</i>			C		6
animals	reptiles	Scincidae	<i>Tiliqua scincoides</i>	eastern blue-tongued lizard		C		2
animals	reptiles	Scincidae	<i>Lygisaurus foliorum</i>			C		1
animals	reptiles	Scincidae	<i>Morethia boulengeri</i>			C		1
animals	reptiles	Scincidae	<i>Ctenotus taeniolatus</i>	copper-tailed skink		C		1
animals	reptiles	Scincidae	<i>Anomalopus leuckartii</i>			C		1/1
animals	reptiles	Scincidae	<i>Pygmaeascincus timlowi</i>	dwarf litter-skink		C		1/1
animals	reptiles	Scincidae	<i>Carlia pectoralis sensu lato</i>			C		2
animals	reptiles	Scincidae	<i>Cryptoblepharus pulcher pulcher</i>	elegant snake-eyed skink		C		10
animals	reptiles	Typhlopidae	<i>Ramphotyphlops ligatus</i>			C		6/1
animals	reptiles	Typhlopidae	<i>Ramphotyphlops wiedii</i>			C		2/1
animals	reptiles	Typhlopidae	<i>Ramphotyphlops proximus</i>			C		1
animals	reptiles	Varanidae	<i>Varanus tristis</i>	black-tailed monitor		C		1
animals	reptiles	Varanidae	<i>Varanus gouldii</i>	sand monitor		C		4
animals	reptiles	Varanidae	<i>Varanus varius</i>	lace monitor		C		4
animals	reptiles	Varanidae	<i>Varanus panoptes</i>	yellow-spotted monitor		C		3
fungi	sac fungi	Agyriaceae	<i>Trapelia</i>			C		1/1
fungi	sac fungi	Cladiaceae	<i>Cladia beaugleholei</i>			C		2/2
fungi	sac fungi	Collemataceae	<i>Physma ahtianum</i>			C		2/2
fungi	sac fungi	Parmeliaceae	<i>Xanthoparmelia willisii</i>			C		1/1
fungi	sac fungi	Parmeliaceae	<i>Parmotrema cristiferum</i>			C		1/1
fungi	sac fungi	Pertusariaceae	<i>Pertusaria paragibberosa</i>			C		1/1
fungi	sac fungi	Physciaceae	<i>Physcia nubila</i>			C		1/1
fungi	sac fungi	Physciaceae	<i>Buellia</i>			C		2/2
fungi	sac fungi	Physciaceae	<i>Physcia krogiae</i>			C		1/1
fungi	sac fungi	Teloschistaceae	<i>Caloplaca cerina</i>			C		1/1
plants	conifers	Cupressaceae	<i>Callitris glaucophylla</i>	white cypress pine		C		28
plants	conifers	Cupressaceae	<i>Callitris endlicheri</i>	black cypress pine		C		1/1
plants	ferns	Adiantaceae	<i>Cheilanthes sieberi subsp. sieberi</i>			C		3
plants	ferns	Adiantaceae	<i>Cheilanthes distans</i>	bristly cloak fern		C		1
plants	higher dicots	Acanthaceae	<i>Dipteracanthus australasicus subsp. corynothecus</i>			C		1
plants	higher dicots	Acanthaceae	<i>Brunoniella australis</i>	blue trumpet		C		3
plants	higher dicots	Amaranthaceae	<i>Ptilotus nobilis subsp. semilanatus</i>			C		1/1

Kingdom	Class	Family	Scientific Name	Common Name	I	Q	A	Records
plants	higher dicots	Apiaceae	<i>Actinotus gibbonsii</i>	dwarf flannel flower		C		1/1
plants	higher dicots	Apocynaceae	<i>Parsonsia eucalyptophylla</i>	gargaloo		C		1
plants	higher dicots	Apocynaceae	<i>Marsdenia micradenia</i>	gymnema		C		2
plants	higher dicots	Apocynaceae	<i>Carissa ovata</i>	currantbush		C		1
plants	higher dicots	Asteraceae	<i>Olearia canescens</i> subsp. (SF618 P.Forster PIF6660)			C		1/1
plants	higher dicots	Asteraceae	<i>Brachyscome multifida</i> var. <i>multifida</i>			C		1/1
plants	higher dicots	Asteraceae	<i>Myriocephalus pluriflorus</i>			C		1/1
plants	higher dicots	Asteraceae	<i>Chrysocephalum apiculatum</i>	yellow buttons		C		2/1
plants	higher dicots	Asteraceae	<i>Vittadinia constricta</i>			C		1/1
plants	higher dicots	Asteraceae	<i>Solenogyne bellioides</i>			C		1/1
plants	higher dicots	Asteraceae	<i>Rutidosia murchisonii</i>			C		2/2
plants	higher dicots	Asteraceae	<i>Rutidosia lanata</i>			V		2/2
plants	higher dicots	Asteraceae	<i>Vittadinia sulcata</i>	native daisy		C		1/1
plants	higher dicots	Brassicaceae	<i>Rorippa palustris</i>	marsh cress	Y			1/1
plants	higher dicots	Cactaceae	<i>Opuntia aurantiaca</i>	tiger pear	Y			1
plants	higher dicots	Cactaceae	<i>Opuntia stricta</i>		Y			3
plants	higher dicots	Caesalpiniaceae	<i>Senna artemisioides</i> subsp. <i>zygophylla</i>			C		1
plants	higher dicots	Campanulaceae	<i>Wahlenbergia communis</i>	tufted bluebell		C		2/2
plants	higher dicots	Capparaceae	<i>Apophyllum anomalum</i>	broom bush		C		1
plants	higher dicots	Capparaceae	<i>Capparis lasiantha</i>	nipan		C		3/2
plants	higher dicots	Casuarinaceae	<i>Allocasuarina luehmannii</i>	bull oak		C		95
plants	higher dicots	Casuarinaceae	<i>Casuarina cristata</i>	belah		C		34
plants	higher dicots	Celastraceae	<i>Denhamia cunninghamii</i>			C		2/2
plants	higher dicots	Chenopodiaceae	<i>Sclerolaena tetracuspis</i>	brigalow burr		C		1
plants	higher dicots	Chenopodiaceae	<i>Dysphania glomulifera</i> subsp. <i>glomulifera</i>			C		1/1
plants	higher dicots	Chenopodiaceae	<i>Maireana microphylla</i>			C		1/1
plants	higher dicots	Chenopodiaceae	<i>Rhagodia spinescens</i>	thorny saltbush		C		1
plants	higher dicots	Chenopodiaceae	<i>Maireana decalvans</i>	black cottonbush		C		1
plants	higher dicots	Chenopodiaceae	<i>Enchylaena tomentosa</i>			C		1
plants	higher dicots	Crassulaceae	<i>Crassula tetramera</i>			C		1/1
plants	higher dicots	Droseraceae	<i>Drosera lunata</i>			C		1/1
plants	higher dicots	Ericaceae	<i>Melichrus</i> sp. (Isla Gorge P.Sharpe+ 601)			C		1/1
plants	higher dicots	Ericaceae	<i>Melichrus erubescens</i>	ruby urn heath		C		1/1
plants	higher dicots	Fabaceae	<i>Hovea longipes</i>	brush hovea		C		1/1
plants	higher dicots	Fabaceae	<i>Swainsona luteola</i>	dwarf darling pea		C		1/1
plants	higher dicots	Fabaceae	<i>Indigofera australis</i> subsp. <i>australis</i>			C		1/1
plants	higher dicots	Fabaceae	<i>Zornia dyctiocarpa</i> var. <i>dyctiocarpa</i>			C		1/1
plants	higher dicots	Fabaceae	<i>Daviesia genistifolia</i>	broom bitter pea		C		1/1
plants	higher dicots	Goodeniaceae	<i>Goodenia glabra</i>			C		4
plants	higher dicots	Goodeniaceae	<i>Goodenia havilandii</i>			C		1/1
plants	higher dicots	Goodeniaceae	<i>Goodenia rosulata</i>			C		1/1
plants	higher dicots	Goodeniaceae	<i>Goodenia delicata</i>			C		1/1
plants	higher dicots	Haloragaceae	<i>Gonocarpus urceolatus</i>			C		1/1
plants	higher dicots	Lamiaceae	<i>Spartothamnella juncea</i>	native broom		C		1
plants	higher dicots	Lamiaceae	<i>Prostanthera ringens</i>			C		1/1
plants	higher dicots	Lamiaceae	<i>Prostanthera</i>			C		1/1

Kingdom	Class	Family	Scientific Name	Common Name	I	Q	A	Records
plants	higher dicots	Lamiaceae	<i>Prostanthera lithospermoides</i>			C		1/1
plants	higher dicots	Loranthaceae	<i>Lysiana exocarpi</i> subsp. <i>tenuis</i>			C		1
plants	higher dicots	Loranthaceae	<i>Amyema quandang</i> var. <i>quandang</i>			C		2/1
plants	higher dicots	Loranthaceae	<i>Amyema gaudichaudii</i>			C		1/1
plants	higher dicots	Loranthaceae	<i>Amyema quandang</i> var. <i>bancroftii</i>	broad-leaved grey mistletoe		C		3/2
plants	higher dicots	Malvaceae	<i>Hibiscus sturtii</i> var. <i>sturtii</i>			C		4
plants	higher dicots	Malvaceae	<i>Sida aprica</i> var. <i>aprica</i>			C		1/1
plants	higher dicots	Malvaceae	<i>Sida pleiantha</i>			C		1
plants	higher dicots	Malvaceae	<i>Sida</i> sp. (<i>Musselbrook M.B.Thomas+ MRS437</i>)			C		1/1
plants	higher dicots	Mimosaceae	<i>Acacia everistii</i>			C		1/1
plants	higher dicots	Mimosaceae	<i>Acacia hakeoides</i>	hakea wattle		C		4/2
plants	higher dicots	Mimosaceae	<i>Acacia leiocalyx</i>			C		11
plants	higher dicots	Mimosaceae	<i>Acacia wardellii</i>			NT		10/8
plants	higher dicots	Mimosaceae	<i>Acacia harpophylla</i>	brigalow		C		22/1
plants	higher dicots	Mimosaceae	<i>Acacia muelleriana</i>			C		1/1
plants	higher dicots	Mimosaceae	<i>Acacia sparsiflora</i>			C		4/1
plants	higher dicots	Mimosaceae	<i>Acacia spectabilis</i>	pilliga wattle		C		2
plants	higher dicots	Mimosaceae	<i>Acacia tenuinervis</i>			C		4/4
plants	higher dicots	Mimosaceae	<i>Acacia dietrichiana</i>			C		1/1
plants	higher dicots	Mimosaceae	<i>Acacia blakei</i> subsp. <i>blakei</i>			C		1/1
plants	higher dicots	Mimosaceae	<i>Acacia crassa</i> subsp. <i>crassa</i>			C		34/1
plants	higher dicots	Mimosaceae	<i>Acacia deanei</i> subsp. <i>deanei</i>			C		1/1
plants	higher dicots	Mimosaceae	<i>Acacia leiocalyx</i> subsp. <i>leiocalyx</i>			C		6/2
plants	higher dicots	Mimosaceae	<i>Acacia conferta</i>			C		5
plants	higher dicots	Mimosaceae	<i>Acacia caroleae</i>			C		1/1
plants	higher dicots	Mimosaceae	<i>Acacia burrowii</i>			C		3/3
plants	higher dicots	Mimosaceae	<i>Acacia</i>			C		2
plants	higher dicots	Mimosaceae	<i>Acacia debilis</i>			C		1/1
plants	higher dicots	Myrtaceae	<i>Eucalyptus largiflorens</i>	black box		C		1/1
plants	higher dicots	Myrtaceae	<i>Eucalyptus fibrosa</i> subsp. <i>nubila</i>			C		66
plants	higher dicots	Myrtaceae	<i>Corymbia trachyphloia</i> subsp. <i>trachyphloia</i>			C		6
plants	higher dicots	Myrtaceae	<i>Eucalyptus tereticornis</i> subsp. <i>tereticornis</i>			C		1/1
plants	higher dicots	Myrtaceae	<i>Eucalyptus elegans</i>			C		18/1
plants	higher dicots	Myrtaceae	<i>Melaleuca decora</i>			C		2
plants	higher dicots	Myrtaceae	<i>Melaleuca nodosa</i>			C		1/1
plants	higher dicots	Myrtaceae	<i>Eucalyptus crebra</i>	narrow-leaved red ironbark		C		110/3
plants	higher dicots	Myrtaceae	<i>Eucalyptus exserta</i>	Queensland peppermint		C		1/1
plants	higher dicots	Myrtaceae	<i>Melaleuca uncinata</i>			C		1
plants	higher dicots	Myrtaceae	<i>Angophora leiocarpa</i>	rusty gum		C		8
plants	higher dicots	Myrtaceae	<i>Eucalyptus populnea</i>	poplar box		C		1
plants	higher dicots	Myrtaceae	<i>Eucalyptus tenuipes</i>	narrow-leaved white mahogany		C		2/2
plants	higher dicots	Myrtaceae	<i>Corymbia clarksoniana</i>			C		1
plants	higher dicots	Myrtaceae	<i>Eucalyptus woollsiana</i>			C		1/1
plants	higher dicots	Myrtaceae	<i>Eucalyptus chloroclada</i>	Baradine red gum		C		2/2
plants	higher dicots	Myrtaceae	<i>Homalocalyx polyandrus</i>			C		1/1
plants	higher dicots	Myrtaceae	<i>Melaleuca densispicata</i>			C		1/1

Kingdom	Class	Family	Scientific Name	Common Name	I	Q	A	Records
plants	higher dicots	Myrtaceae	<i>Melaleuca squamophloia</i>			C		2/1
plants	higher dicots	Myrtaceae	<i>Thryptomene parviflora</i>			C		1/1
plants	higher dicots	Oleaceae	<i>Notelaea microcarpa</i> var. <i>microcarpa</i>			C		1
plants	higher dicots	Picrodendraceae	<i>Petalostigma pubescens</i>	quinine tree		C		5
plants	higher dicots	Pittosporaceae	<i>Pittosporum angustifolium</i>			C		1/1
plants	higher dicots	Proteaceae	<i>Hakea lorea</i> subsp. <i>lorea</i>			C		1
plants	higher dicots	Proteaceae	<i>Grevillea striata</i>	beefwood		C		2
plants	higher dicots	Rhamnaceae	<i>Alphitonia excelsa</i>	soap tree		C		2
plants	higher dicots	Rubiaceae	<i>Oldenlandia mitrasacmoides</i> subsp. <i>trachymenoides</i>			C		1/1
plants	higher dicots	Rutaceae	<i>Boronia bipinnata</i>	rock boronia		C		3
plants	higher dicots	Rutaceae	<i>Boronia splendida</i>			C		4/4
plants	higher dicots	Rutaceae	<i>Geijera parviflora</i>	wilga		C		5
plants	higher dicots	Rutaceae	<i>Boronia occidentalis</i>			C		2/2
plants	higher dicots	Rutaceae	<i>Philotheca difformis</i> subsp. <i>difformis</i>			C		2/2
plants	higher dicots	Santalaceae	<i>Santalum lanceolatum</i>			C		1
plants	higher dicots	Sapindaceae	<i>Alectryon diversifolius</i>	scrub boonaree		C		1
plants	higher dicots	Sapindaceae	<i>Dodonaea macrossanii</i>			C		2
plants	higher dicots	Sapindaceae	<i>Dodonaea triangularis</i>			C		4
plants	higher dicots	Scrophulariaceae	<i>Eremophila deserti</i>			C		1
plants	higher dicots	Solanaceae	<i>Physalis lanceifolia</i>		Y			1/1
plants	higher dicots	Solanaceae	<i>Duboisia leichhardtii</i>			C		1/1
plants	higher dicots	Solanaceae	<i>Solanum nigrum</i> subsp. <i>nigrum</i>		Y			1/1
plants	higher dicots	Solanaceae	<i>Solanum jucundum</i>			C		1/1
plants	higher dicots	Solanaceae	<i>Solanum nemophilum</i>			C		4
plants	higher dicots	Verbenaceae	<i>Glandularia aristigera</i>		Y			3/1
plants	higher dicots	Zygophyllaceae	<i>Roepera apiculata</i>			C		1
plants	monocots	Cyperaceae	<i>Scleria sphacelata</i>			C		3
plants	monocots	Cyperaceae	<i>Schoenus</i>			C		1
plants	monocots	Cyperaceae	<i>Gahnia aspera</i>			C		4
plants	monocots	Cyperaceae	<i>Cyperus fulvus</i>			C		1
plants	monocots	Cyperaceae	<i>Cyperus victoriensis</i>			C		1/1
plants	monocots	Cyperaceae	<i>Eleocharis blakeana</i>			C		1/1
plants	monocots	Cyperaceae	<i>Bulbostylis barbata</i>			C		1/1
plants	monocots	Cyperaceae	<i>Schoenus centralis</i>			C		1/1
plants	monocots	Cyperaceae	<i>Fuirena incrassata</i>			C		1/1
plants	monocots	Cyperaceae	<i>Cyperus castaneus</i>			C		1/1
plants	monocots	Cyperaceae	<i>Cyperus bowmannii</i>			C		1/1
plants	monocots	Cyperaceae	<i>Cyperus gracilis</i>			C		1
plants	monocots	Hemerocallidaceae	<i>Dianella revoluta</i> var. <i>revoluta</i>			C		2
plants	monocots	Iridaceae	<i>Sisyrinchium</i> sp. (Peregrin P.R.Sharpe 4970)	scourweed	Y			1/1
plants	monocots	Juncaceae	<i>Juncus subsecundus</i>			C		1/1
plants	monocots	Juncaceae	<i>Juncus psammophilus</i>			C		1/1
plants	monocots	Laxmanniaceae	<i>Lomandra leucocephala</i> subsp. <i>leucocephala</i>			C		4
plants	monocots	Laxmanniaceae	<i>Lomandra multiflora</i> subsp. <i>multiflora</i>			C		2
plants	monocots	Laxmanniaceae	<i>Lomandra filiformis</i> subsp. <i>filiformis</i>			C		5
plants	monocots	Laxmanniaceae	<i>Laxmannia gracilis</i>	slender wire lily		C		1

Kingdom	Class	Family	Scientific Name	Common Name	I	Q	A	Records
plants	monocots	Laxmanniaceae	<i>Lomandra</i>			C		1
plants	monocots	Orchidaceae	<i>Cymbidium canaliculatum</i>			C		1
plants	monocots	Orchidaceae	<i>Pterostylis bicolor</i>			C		1/1
plants	monocots	Orchidaceae	<i>Cyanicula caerulea</i>			C		1/1
plants	monocots	Orchidaceae	<i>Pterostylis</i>			C		1/1
plants	monocots	Orchidaceae	<i>Genoplesium</i>			C		1/1
plants	monocots	Orchidaceae	<i>Caladenia caerulea var. caerulea</i>			C		1
plants	monocots	Poaceae	<i>Aristida caput-medusae</i>			C		5
plants	monocots	Poaceae	<i>Eragrostis lacunaria</i>	purple lovegrass		C		4
plants	monocots	Poaceae	<i>Eriachne mucronata</i>			C		2
plants	monocots	Poaceae	<i>Eragrostis sororia</i>			C		2
plants	monocots	Poaceae	<i>Entolasia stricta</i>	wiry panic		C		2
plants	monocots	Poaceae	<i>Themeda triandra</i>	kangaroo grass		C		1
plants	monocots	Poaceae	<i>Panicum effusum</i>			C		2
plants	monocots	Poaceae	<i>Aristida ramosa</i>	purple wiregrass		C		1
plants	monocots	Poaceae	<i>Paspalidium</i>			C		2
plants	monocots	Poaceae	<i>Amphipogon caricinus var. scaber</i>			C		1/1
plants	monocots	Poaceae	<i>Aristida queenslandica var. queenslandica</i>			C		1
plants	monocots	Poaceae	<i>Aristida jerichoensis var. subspinulifera</i>			C		2
plants	monocots	Poaceae	<i>Aristida queenslandica var. dissimilis</i>			C		2
plants	monocots	Poaceae	<i>Enteropogon unispiceus</i>			C		2
plants	monocots	Poaceae	<i>Paspalum scrobiculatum</i>	ditch millet		C		1/1
plants	monocots	Poaceae	<i>Aristida leichhardtiana</i>			C		4/1
plants	monocots	Poaceae	<i>Eragrostis megalosperma</i>			C		2
plants	monocots	Poaceae	<i>Dinebra decipiens var. decipiens</i>			C		1
plants	monocots	Poaceae	<i>Aristida calycina var. calycina</i>			C		1
plants	monocots	Poaceae	<i>Enteropogon paucispiceus</i>			C		2

CODES

I - Y indicates that the taxon is introduced to Queensland and has naturalised.

Q - Indicates the Queensland conservation status of each taxon under the *Nature Conservation Act 1992*. The codes are Extinct in the Wild (PE), Endangered (E), Vulnerable (V), Near Threatened (NT), Least Concern (C) or Not Protected ().

A - Indicates the Australian conservation status of each taxon under the *Environment Protection and Biodiversity Conservation Act 1999*. The values of EPBC are Conservation Dependent (CD), Critically Endangered (CE), Endangered (E), Extinct (EX), Extinct in the Wild (XW) and Vulnerable (V).

Records – The first number indicates the total number of records of the taxon for the record option selected (i.e. All, Confirmed or Specimens).

This number is output as 99999 if it equals or exceeds this value. The second number located after the / indicates the number of specimen records for the taxon.

This number is output as 999 if it equals or exceeds this value.

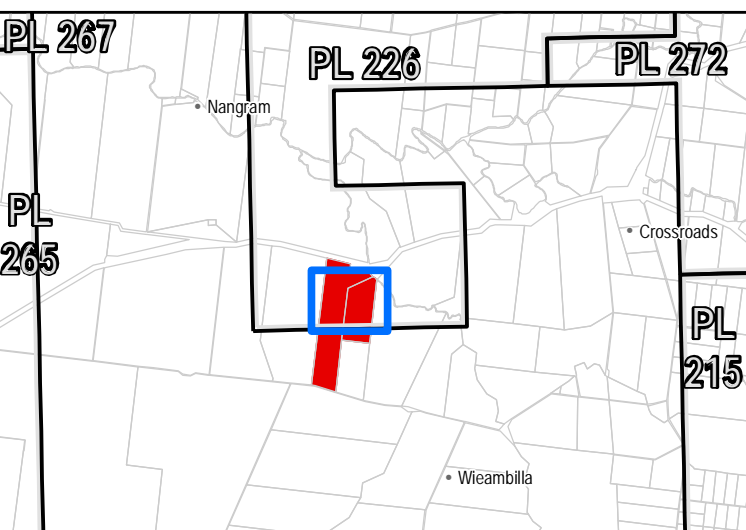
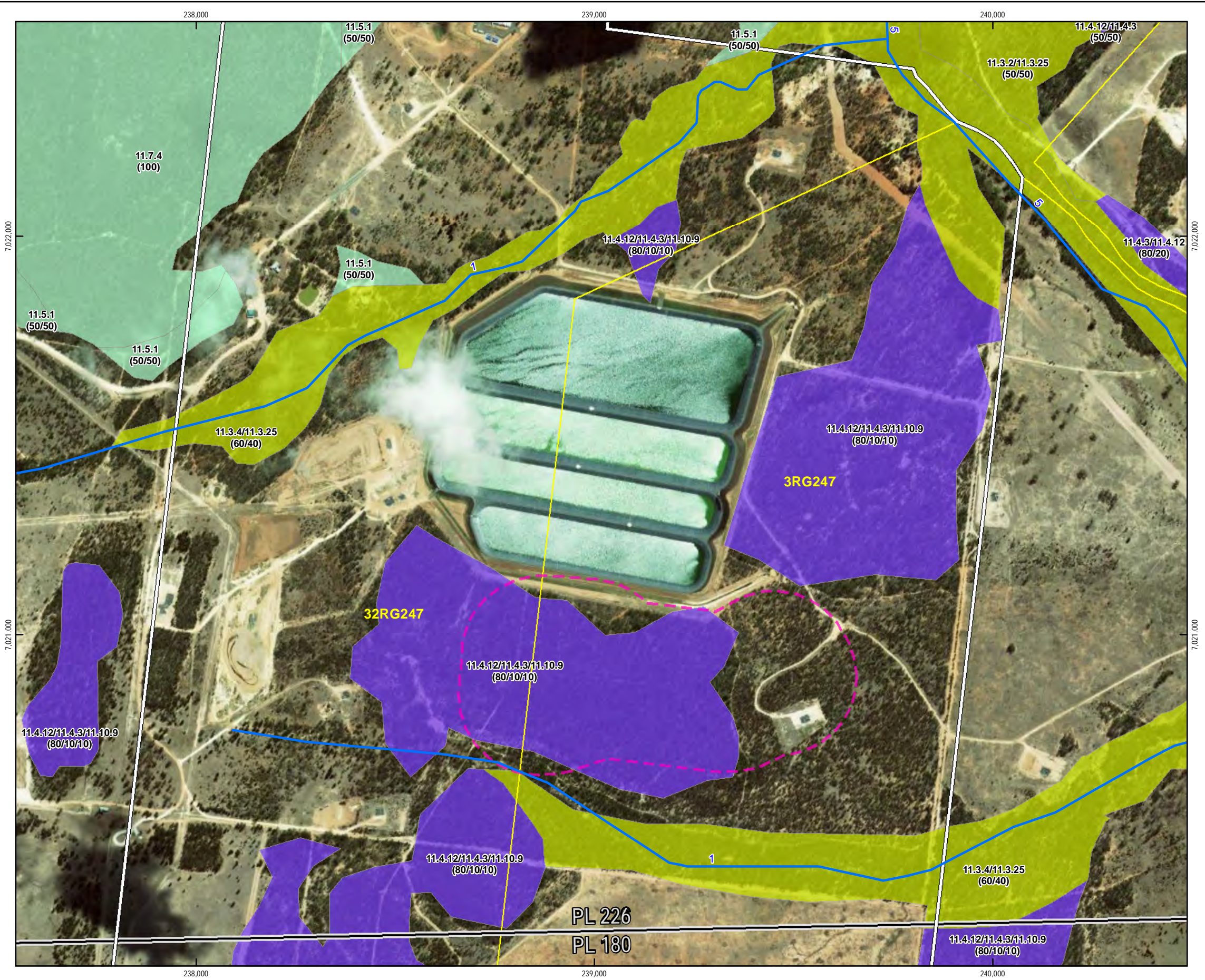
Appendix D: DNRM Mapped Regional Ecosystems

This Appendix provides an overview of DNRM mapped regional ecosystems.

Legend

- DNRM Stream Order
- Biodiversity Status of Remnant Regional Ecosystems (RE)
 - Endangered RE
 - Of Concern RE
 - No Concern at Present
- Boundary
 - Survey Area
 - Site Location
 - Surveyed Cadastral
 - Permit

Source Information:
 © State of Queensland (Department of Natural Resources and Mines) 2015
 © WorldView2 (2014)
 Information presented on this product is distributed by the Queensland Government as an information source only. While every care is taken to ensure the accuracy of this data the State of Queensland make no statements, representations or warranties about the accuracy, reliability, completeness or suitability of any information contained in this product. The State of Queensland disclaims all responsibility for information contained in this product and all liability (including without limitation, liability in negligence) for all expenses, losses, damages and costs you may incur as a result of the information being inaccurate or incomplete on any way for any reason.



Scale 1:10,000 (at A3)

0 150 300 600 Metres

Coordinate System: GDA 1994 MGA Zone 56

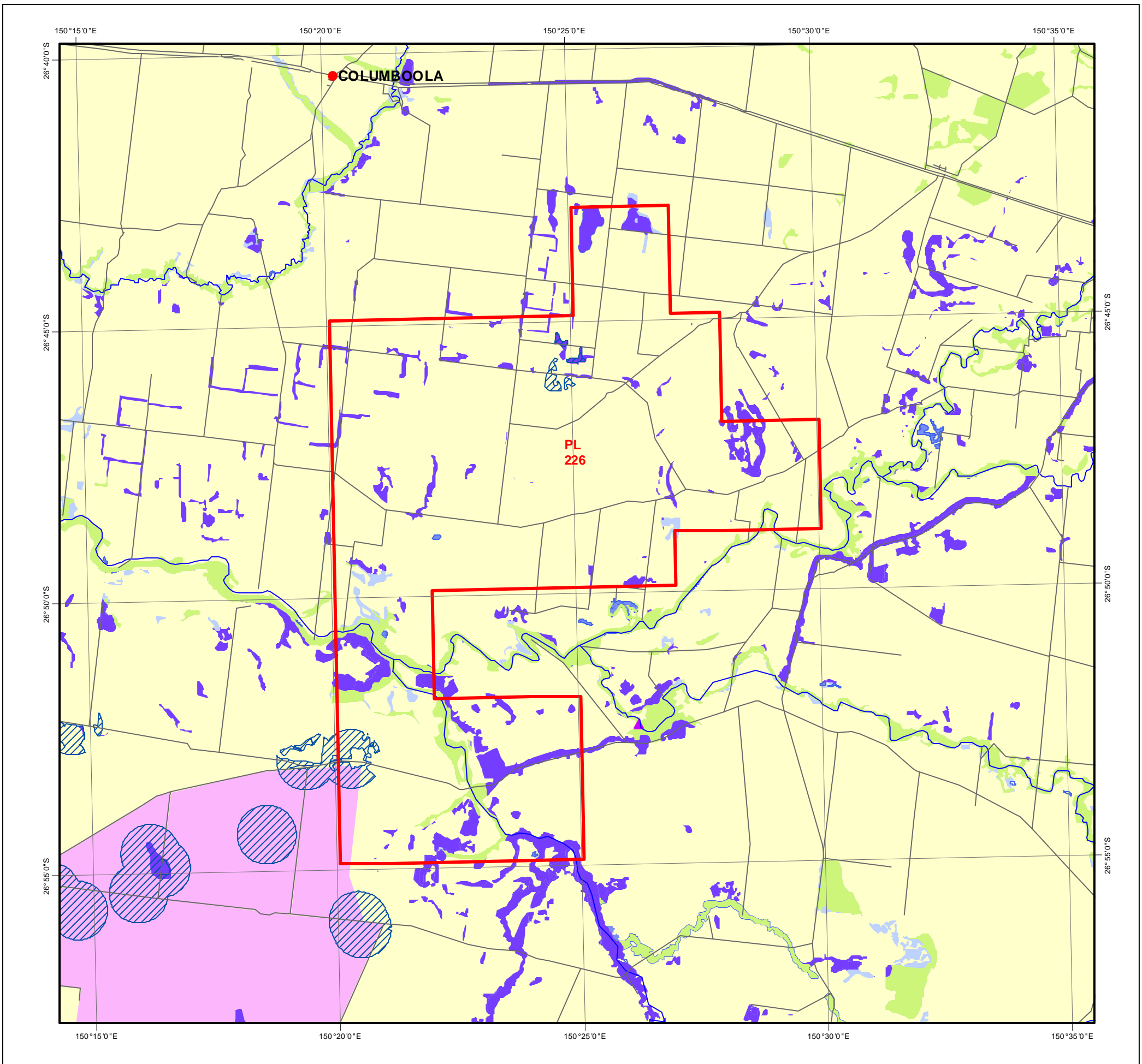
Rev	Description	Drawn	Check	QA	Approved	Date
0	Issued For Use	ALM	GP	SAW	CD	09/02/2015
A	Issued For Review	ALM	GP	SAW	CD	06/01/2015



Appendix D:
 DNRM Mapped Regional Ecosystems
 Date: 9 February 2015

Map Number 1 of 1	Doc No Q-4100-15-RP-038	Rev 0
Map ID GISWR_24917		

Appendix E: EHP Mapping of ESAs and Other Environmental Values

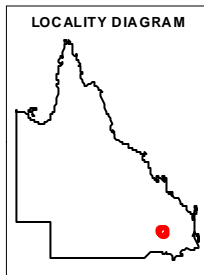


ENVIRONMENTALLY SENSITIVE AREAS - non-mining resource activities (EP Act)

Requested By: TED.STONE@ORIGINENERGY.COM.AU

Date: 30 Dec 14 Time: 10.29.39

Centred on Tenure:
PL 226



0 1900 3800 5700 7600 9500 m

This product is projected into GDA 1994 MGA Zone 56

© The State of Queensland, 2014

- Selected Petroleum Lease
- CATEGORY A**
- National Parks
- Regional Parks (general)
- Forest Reserves
- Wet Tropics World Heritage Area
- Great Barrier Reef Marine Park Area
- Marine Parks other than General Use Zones
- CATEGORY B**
- World Heritage Areas
- Queensland Heritage Register Places
- Ramsar Sites
- Cultural Heritage Registered Areas and DLA's other than Stanbrooke
- Special Forestry Areas
- Fish Habitat Areas
- Koala Plan
- Coordinated Conservation Areas
- Endangered Regional Ecosystems (remnant and mature regrowth (biodiversity status))
- Marine Parks other than General Use Zones
- Marine Plants

- CATEGORY C**
- Essential Habitat
- Nature Refuges
- Regional Parks (resource use area)
- State Forests
- Timber Reserves
- Of Concern Regional Ecosystems (remnant biodiversity status)
- OTHERS**
- Towns
- Roads
- © Pitney Bowes Software Pty Ltd 2014
- Rivers
- Springs
- Referable Wetlands
- Dominant Wetlands (51-100%)
- Subdominant Wetlands (0-50%)
- Queensland

Information presented on this product is distributed by the Queensland Government as an information source only. While every care is taken to ensure the accuracy of this data, Pitney Bowes Software and the State of Queensland makes no statements, representations or warranties about the accuracy, reliability, completeness or suitability of any information contained in this product.

The State of Queensland disclaims all responsibility for information contained in this product and all liability (including without limitation, liability in negligence) for all expenses, losses, damages and costs you may incur as a result of the information being inaccurate or incomplete in any way for any reason.

External contributors (non-government parties) of the data for this product are: Great Barrier Reef Marine Park Authority and Pitney Bowes Software

Regional ecosystem mapping (remnant biodiversity status) may incorporate amendments, resulting from property level assessments, to the release version of the mapping available on QGIS.

NOTE TO USER: Themes presented in this map are indicative only. Field survey may be required to verify the 'true' spatial extent and value. Not all environmentally sensitive areas are presented in this map. A user should refer to the particular circumstances relevant to their situation to assess the 'completeness' of themes provided.

The user should note that some boundaries and indicated values are ambient or subject to change over time (e.g. regional ecosystem boundaries and conservation status, watercourse mapping etc).

The user should be aware that due to multiple overlapping themes present, some themes/layers may be obscured by others. Ordering in the Legend does not accurately reflect the order by which themes are displayed.

Mature Regrowth vegetation, depicting endangered regional ecosystems, was incorporated as of 24/07/2012.

Appendix F: List of Flora and Fauna Species Identified on Site

This Appendix provides a full list of all flora and fauna species recorded during the field surveys.

Family	Scientific name	Common name	Legislative status (NC Act, LP Act)*	Legislative status (EPBC Act)*
Birds				
Acanthizidae	<i>Acanthiza chrysorrhoa</i>	yellow-rumped thornbill	LC	-
Acanthizidae	<i>Acanthiza nana</i>	yellow thornbill	LC	-
Artamidae	<i>Cracticus nigrogularis</i>	pied butcherbird	LC	-
Artamidae	<i>Cracticus tibicen</i>	Australian magpie	LC	-
Artamidae	<i>Cracticus torquatus</i>	grey butcherbird	LC	-
Campephagidae	<i>Coracina novaehollandiae</i>	black-faced cuckoo-shrike	LC	Marine
Columbidae	<i>Ocyphaps lophotes</i>	crested pigeon	LC	-
Corcoracidae	<i>Struthidea cinerea</i>	apostlebird	LC	-
Corvidae	<i>Corvus orru</i>	torresian crow	LC	-
Cuculidae	<i>Chalcites basalus</i>	Horsfield's bronze-cuckoo	LC	Marine
Estrildidae	<i>Taeniopygia bichenovii</i>	double-barred finch	LC	-
Halcyonidae	<i>Dacelo novaeguineae</i>	laughing kookaburra	LC	-
Meliphagidae	<i>Manorina melanocephala</i>	noisy miner	LC	-
Meliphagidae	<i>Philemon corniculatus</i>	noisy friarbird	LC	-
Meliphagidae	<i>Plectorhyncha lanceolata</i>	striped honeyeater	LC	-
Monarchidae	<i>Myiagra rubecula</i>	leaden flycatcher	LC	-
Pachycephalidae	<i>Colluricincla harmonica</i>	grey shrike-thrush	LC	-
Pachycephalidae	<i>Pachycephala rufiventris</i>	rufous whistler	LC	-
Rhipiduridae	<i>Rhipidura albiscapa</i>	grey fantail	LC	-
Mammals				
Macropodidae	<i>Macropus agilis</i>	agile wallaby	LC	-
Macropodidae	<i>Macropus rufogriseus</i>	red-necked wallaby	LC	-
Amphibians				

Family	Scientific name	Common name	Legislative status (NC Act, LP Act)*	Legislative status (EPBC Act)*
Hylidae	<i>Litoria caerulea</i>	common green treefrog	LC	-
Reptiles				
Gekkonidae	<i>Heteronotia binoei</i>	Bynoe's gecko	LC	-
Plants				
Mimosaceae	<i>Acacia conferta</i>	-	LC	-
Mimosaceae	<i>Acacia leiocalyx</i>	early flowering black wattle	LC	-
Mimosaceae	<i>Acacia spectabilis</i>	pilliga wattle	LC	-
Casuarinaceae	<i>Allocasuarina inophloia</i>	woolly-barked she-oak	LC	-
Casuarinaceae	<i>Allocasuarina luehmannii</i>	bull oak	LC	-
Rhamnaceae	<i>Alphitonia excelsa</i>	soap tree	LC	-
Poaceae	<i>Ancistrachne uncinulata</i>	hooky grass	LC	-
Myrtaceae	<i>Angophora leiocarpa</i>	rusty gum	LC	-
Poaceae	<i>Aristida caput-medusae</i>	many-headed wire grass	LC	-
Acanthaceae	<i>Brunoniella australis</i>	blue trumpet	LC	-
Portulacaceae	<i>Calandrinia sp.</i>	-	LC	-
Cupressaceae	<i>Callitris glaucophylla</i>	white cypress pine	LC	-
Myrtaceae	<i>Calytrix tetragona</i>	fringe myrtle	LC	-
Apocynaceae	<i>Carissa ovata</i>	currant bush	LC	-
Adiantaceae	<i>Cheilanthes distans</i>	bristly cloak fern	SLC	-
Adiantaceae	<i>Cheilanthes sieberi</i>	Mulga fern	SLC	-
Commelinaceae	<i>Commelina</i>	-	LC	-
Myrtaceae	<i>Corymbia clarksoniana</i>	Clarkson's bloodwood	LC	-
Myrtaceae	<i>Corymbia tessellaris</i>	Moreton Bay ash	LC	-
Orchidaceae	<i>Cymbidium canaliculatum</i>	black orchid	SLC	-
Poaceae	<i>Cymbopogon refractus</i>	barbed-wire grass	LC	-
Hemerocallidaceae	<i>Dianella caerulea</i>	a flax lily	LC	-

Family	Scientific name	Common name	Legislative status (NC Act, LP Act)*	Legislative status (EPBC Act)*
Sapindaceae	<i>Dodonaea viscosa</i>	a hop bush	LC	-
Cyperaceae	<i>Eleocharis cylindrostachys</i>	-	LC	-
Poaceae	<i>Eragrostis sp.</i>	-	LC	-
Scrophulariaceae	<i>Eremophila mitchellii</i>	false sandalwood	LC	-
Myrtaceae	<i>Eucalyptus camaldulensis</i>	river red gum	LC	-
Myrtaceae	<i>Eucalyptus crebra</i>	narrow-leaved red ironbark	LC	-
Myrtaceae	<i>Eucalyptus fibrosa</i>	broad-leaved ironbark	LC	-
Myrtaceae	<i>Eucalyptus populnea</i>	poplar box	LC	-
Convolvulaceae	<i>Evolvulus sp.</i>	-	LC	-
Cyperaceae	<i>Fimbristylis sp.</i>	-	LC	-
Cyperaceae	<i>Gahnia aspera</i>	-	LC	-
Rutaceae	<i>Geijera parviflora</i>	wilga	LC	-
Amaranthaceae	<i>Gomphrena celosioides</i>	gomphrena weed	I	-
Goodeniaceae	<i>Goodenia glabra</i>	-	LC	-
Proteaceae	<i>Grevillea striata</i>	beefwood	LC	-
Proteaceae	<i>Hakea lorea subsp. lorea</i>	-	LC	-
Malvaceae	<i>Hibiscus sturtii</i>	-	LC	-
Juncaceae	<i>Juncus usitatus</i>	-	LC	-
Laxmanniaceae	<i>Laxmannia gracilis</i>	slender wire lily	LC	-
Ericaceae	<i>Leucopogon biflorus</i>	-	LC	-
Laxmanniaceae	<i>Lomandra leucocephala</i>	-	LC	-
Laxmanniaceae	<i>Lomandra multiflora</i>	-	LC	-
Myrtaceae	<i>Melaleuca decora</i>	-	LC	-
Commelinaceae	<i>Murdannia graminea</i>	murdannia	LC	-

Family	Scientific name	Common name	Legislative status (NC Act, LP Act)*	Legislative status (EPBC Act)*
Cactaceae	<i>Opuntia stricta</i>	-	I, Class 2	-
Cactaceae	<i>Opuntia tomentosa</i>	velvety tree pear	I, Class 2	-
Picrodendraceae	<i>Petalostigma pubescens</i>	quinine tree	LC	-
Phyllanthaceae	<i>Phyllanthus sp.</i>	-	LC	-
Verbenaceae	<i>Glandularia aristigera</i>	Mayne's Pest	I	-

*Status taken from DoE (2013a); EHP (2012b)

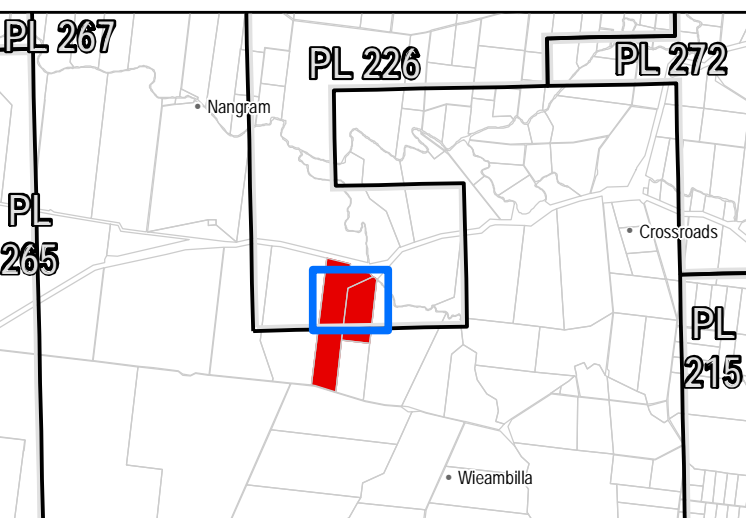
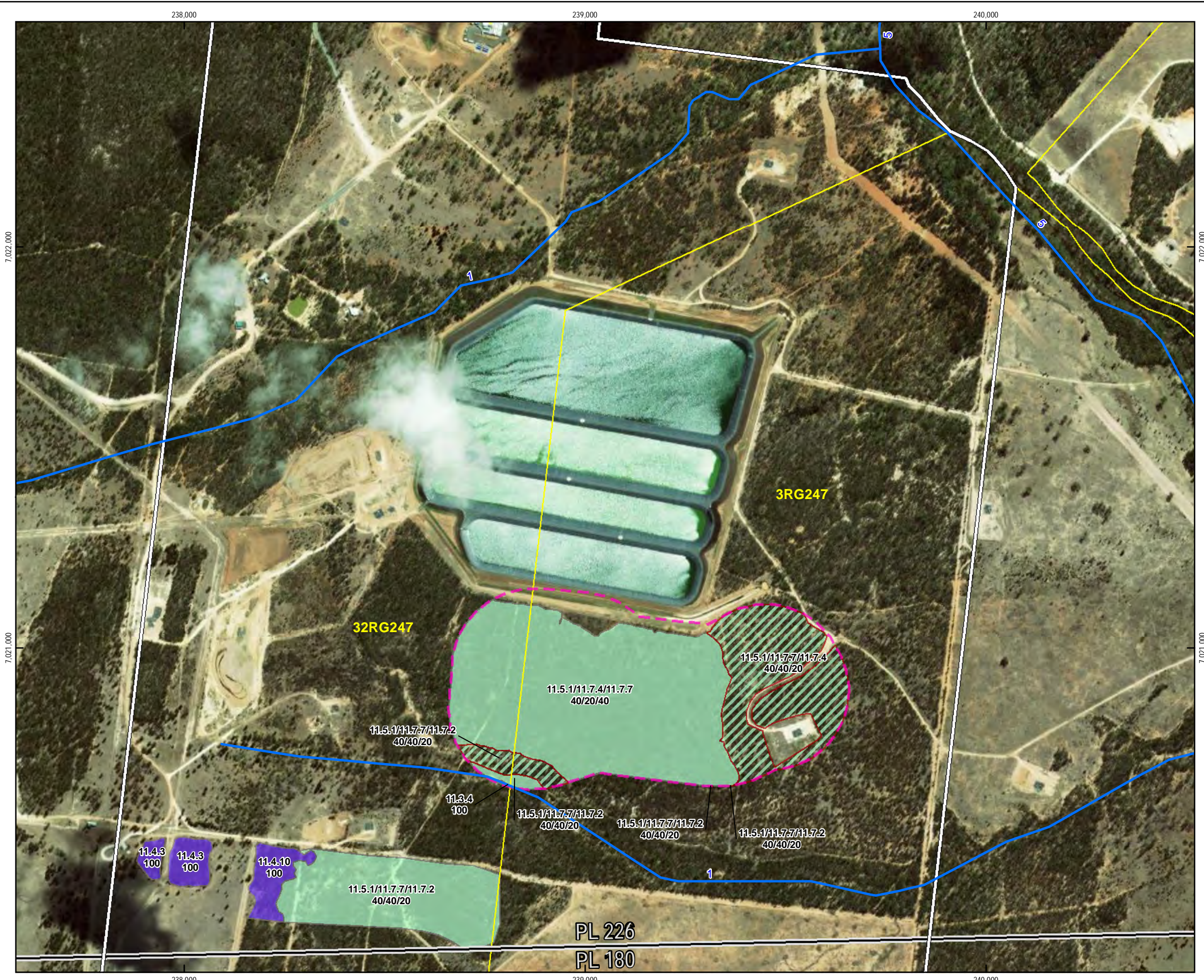
Appendix G: Ground Truthed Regional Ecosystems

This Appendix provides mapping of all field validated GTRE recorded on site.

Legend

- DNRM Stream Order
- Ground Truthed Regional Ecosystems (RE) Biodiversity Status
 - Endangered RE
 - Of Concern RE
 - No Concern at Present
- Regrowth Vegetation
 - Not of Concern
- Boundary
 - Survey Area
 - Site Location
 - Surveyed Cadastral
 - Permit

Source Information:
 © State of Queensland (Department of Natural Resources and Mines) 2015
 © WorldView2 (2014)
 Information presented on this product is distributed by the Queensland Government as an information source only. While every care is taken to ensure the accuracy of this data the State of Queensland make no statements, representations or warranties about the accuracy, reliability, completeness or suitability of any information contained in this product. The State of Queensland disclaims all responsibility for information contained in this product and all liability (including without limitation, liability in negligence) for all expenses, losses, damages and costs you may incur as a result of the information being inaccurate or incomplete on any way for any reason.



Emerald, Rockhampton, Gladstone, Biloela, Wandoan, Miles, Roma, Brisbane

N

Scale 1:10,000 (at A3)

0 150 300 600 Metres

Coordinate System: GDA 1994 MGA Zone 56

Rev	Description	Drawn	Check	QA	Approved	Date
0	Issued For Use	ALM	GP	SAW	CD	09/02/2015
A	Issued For Review	ALM	GP	SAW	CD	07/01/2015



Appendix G:
 Ground Truthed Regional Ecosystems
 Date: 9 February 2015

Map Number	Doc No	Rev
1 of 1	Q-4100-15-RP-038	0
Map ID GISWR_24917		

Appendix H: Ground Truthed *NC Act* Listed Special Least Concern Species Present

Legend

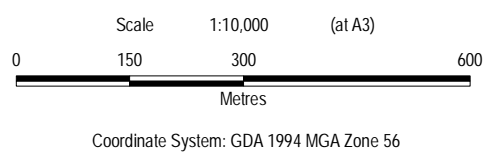
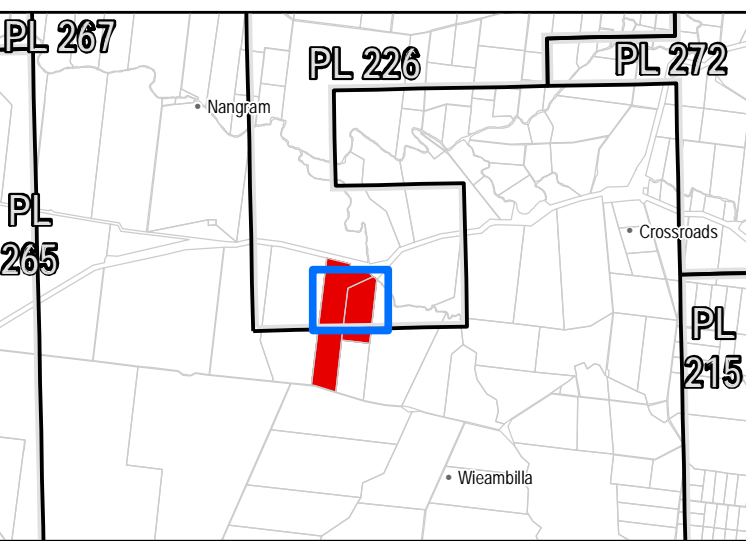
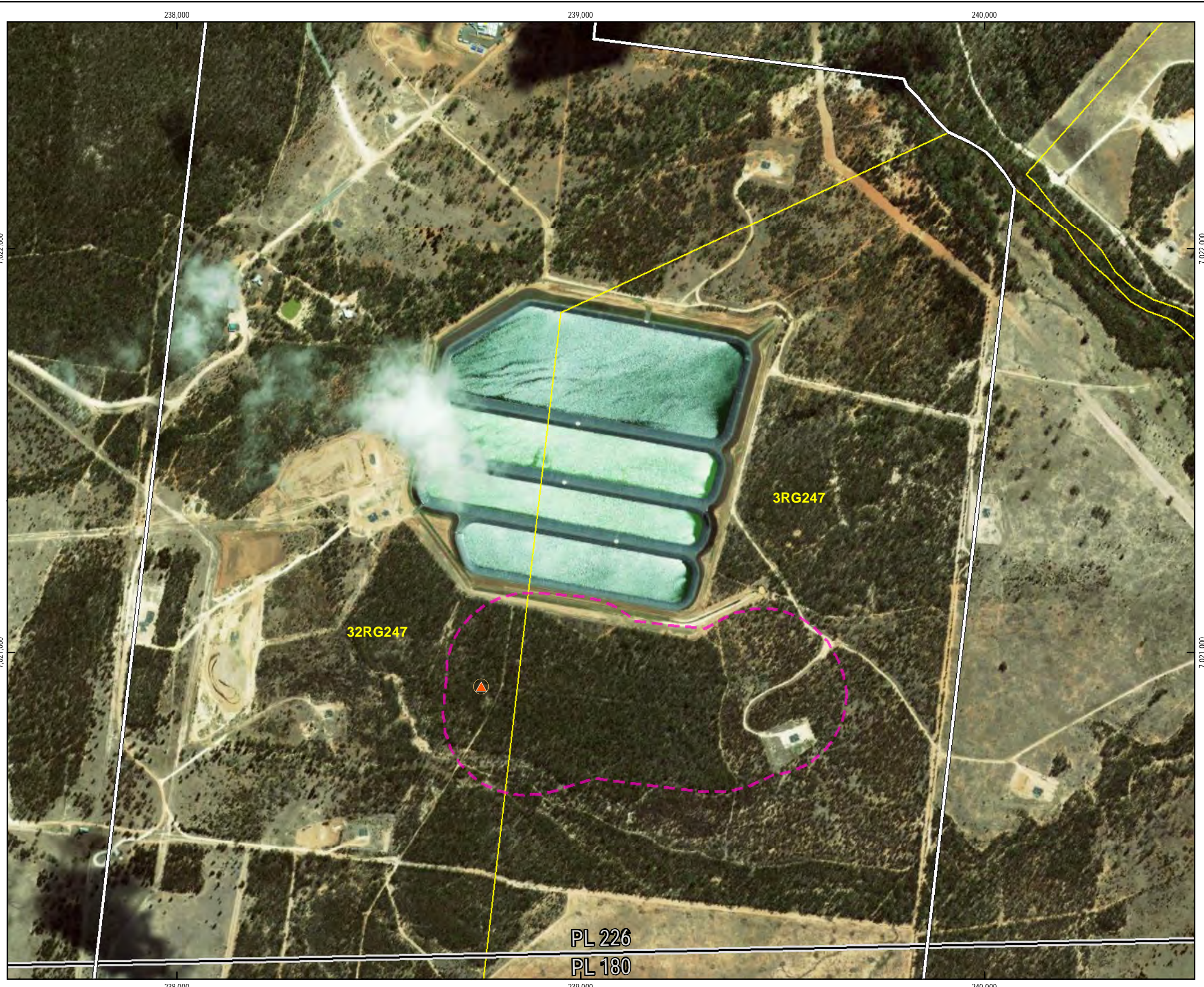
Special Least Concern Flora

- Cheilanthes distans*
- Cheilanthes sieberi*

Boundary

- Survey Area
- Site Location
- Surveyed Cadastral
- Permit

Source Information:
 © State of Queensland (Department of Natural Resources and Mines) 2015
 © WorldView2 (2014)
 Information presented on this product is distributed by the Queensland Government as an information source only. While every care is taken to ensure the accuracy of this data the State of Queensland make no statements, representations or warranties about the accuracy, reliability, completeness or suitability of any information contained in this product. The State of Queensland disclaims all responsibility for information contained in this product and all liability (including without limitation, liability in negligence) for all expenses, losses, damages and costs you may incur as a result of the information being inaccurate or incomplete in any way for any reason.



Rev	Description	Drawn	Check	QA	Approved	Date
0	Issued For Use	ALM	GP	SAW	CD	09/02/2015
A	Issued For Review	ALM	GP	SAW	CD	07/01/2015



Appendix H:
 Ground Truthed NCA Listed Special Least Concern Species
 Date: 9 February 2015

Map Number	Doc No	Rev
1 of 1	Q-4100-15-RP-038	0
Map ID GISWR_24917		

Appendix I: Ground Truthed Weeds and Pest Fauna Present

This Appendix provides mapping of all ground truthed weeds and pest fauna surveyed on site.

Legend

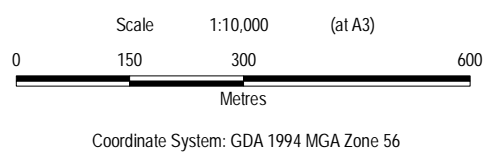
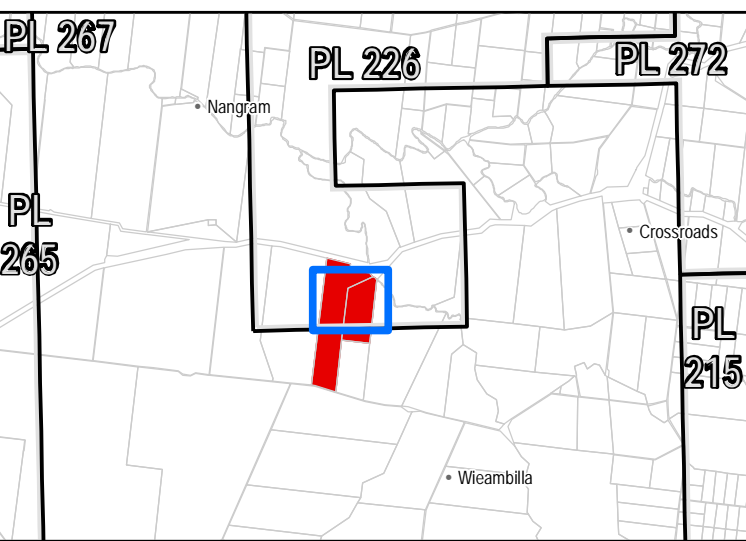
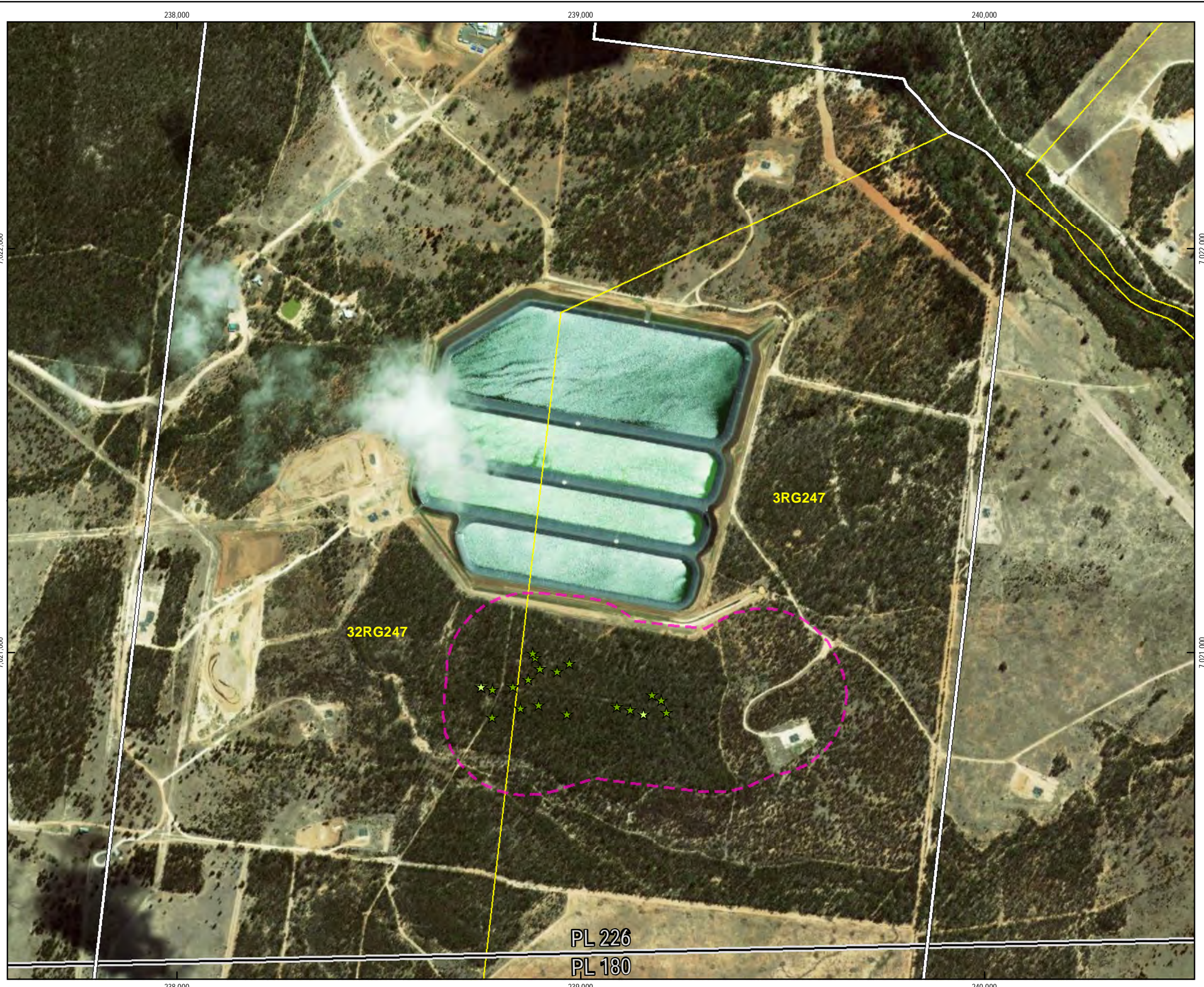
Pest Flora

- ☆ *Opuntia stricta*
- ☆ *Opuntia tomentosa*

Boundary

- Survey Area
- Site Location
- Surveyed Cadastral
- Permit

Source Information:
 © State of Queensland (Department of Natural Resources and Mines) 2015
 © WorldView2 (2014)
 Information presented on this product is distributed by the Queensland Government as an information source only. While every care is taken to ensure the accuracy of this data the State of Queensland make no statements, representations or warranties about the accuracy, reliability, completeness or suitability of any information contained in this product. The State of Queensland disclaims all responsibility for information contained in this product and all liability (including without limitation, liability in negligence) for all expenses, losses, damages and costs you may incur as a result of the information being inaccurate or incomplete on any way for any reason.



Rev	Description	Drawn	Check	QA	Approved	Date
0	Issued For Use	ALM	GP	SAW	CD	09/02/2015
A	Issued For Review	ALM	GP	SAW	CD	07/01/2015



Appendix I:
 Ground Truthed Weeds Present on Site
 Date: 9 February 2015

Map Number	Doc No	Rev
1 of 1	Q-4100-15-RP-038	0
Map ID GISWR_24917		