

Dyck Arboretum of the Plains

NATIVE PLANT GUIDE 2021

VISIT A NATIONAL PARK...IN YOUR OWN BACKYARD!

By Lorna Habegger Harder, Volunteer and Past Board Chairperson

Wherever we are, there too is nature with all its mystery and wonder. - John Burroughs

National Parks offer wonderful outdoor opportunities for visitors to experience America's diverse and iconic landscapes. They are also important in conserving habitat for native plants and animals. But National Parks are often far flung, and not always available to us. Doug Tallamy (*Nature's Best Hope*) has a remedy for this dilemma. Why not create miniature 'national parks' in our home landscapes? With Homegrown National Parks, we can become knowledgeable caretakers of the wildness just outside our windows.

A small Homegrown National Park can't replicate a National Park, but it can provide many of the same benefits: nutrient cycling, water retention, soil-building, carbon sequestration, wildlife habitat, and a year-round view of nature in motion. Four key elements will help you plan your Homegrown National Park:

1. Native plants provide many more survival resources than do non-native species – food, breeding, nesting, and overwintering habitat. Non-native plants do not support wildlife needs as well as native plants, and they can be invasive too.

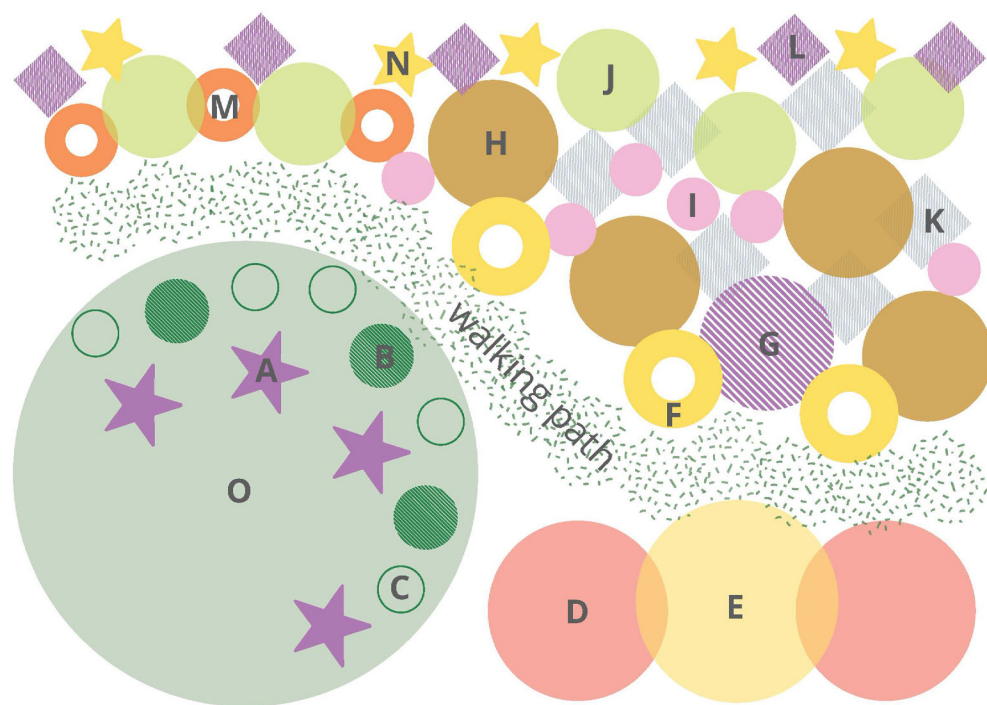
2. Insects keep the ecosystem running smoothly! Invite them in by planting larval food plants and omitting pesticides.

3. Oak trees act as keystone plant species across North America. They sustain dozens of insect, bird and mammal species. Include oak trees that are historically native to your area.

4. Increase interactions by choosing plants that host multiple insect species, attract many kinds of pollinators, feed and shelter many different bird species, and so on. Diverse interactions are key to resilient, functioning natural areas.

Want to get started with your DIY National Park? The design below integrates the four key elements into an aesthetically pleasing landscape. Whether planting a new garden or adding to an existing one, every home landscape supports a growing movement of urban Homegrown National Parks, and contributes to a healthy, functioning community where plants, wildlife, and people flourish!

For more information and to register your garden, visit <https://homegrownnationalpark.org/>



- A - Geranium maculatum
- B - Aquilegia canadensis
- C - Carex albicans
- D - Aronia melanocarpa
'Viking'
- E - Hamamelis virginiana
or Callicarpa americana
- F - Solidago nemoralis
or Oligoneuron rigida
- G - Symphyotrichum (aster)
novae-angliae
- H - Panicum 'Cheyenne Sky'
- I - Echinacea pallida
or Echinacea angustifolia
- J - Sporobolus heterolepis
or S. scoparium 'Jazz'
- K - Penstemon digitalis
- L - Tradescantia tharpilii
- M - Asclepias tuberosa
- N - Oenothera macrocarpa
- O - Quercus spp.
or Prunus serotina

FloraKansas: Native Plant Festival

PLANT LIST 2021

Plant list
subject to
change!

SPRING SALE DATES

Member Pre-Sale: Thursday, April 22, 8 a.m. to 7 p.m.
Public Sale: Friday, April 23, 8 a.m. to 7 p.m.
Saturday, April 24, 8 a.m. to 5 p.m.
Sunday, April 25, 1 to 5 p.m.
Monday, April 26, 8 a.m. to 5 p.m.

FALL SALE DATES

Member Pre-Sale: Thursday, Sept. 9, 8 a.m. to 7 p.m.
Public Sale: Friday, Sept. 10, 8 a.m. to 7 p.m.
Saturday, Sept. 11, 8 a.m. to 5 p.m.
Sunday, Sept. 12, 1 to 5 p.m.

Dyck Arboretum of the Plains • 177 West Hickory, Hesston, KS 67062 • 620-327-8127 • www.dyckarboretum.org • arboretum@hesston.edu

THANK YOU FOR YOUR SUPPORT!

New For 2021	Scientific Name	Common Name	Color	Height (")	Season of Interest	Exposure	Soil
	NATIVE PERENNIALS						
	Achillea 'Coronation Gold'	Yarrow	yellow	36-42	June-Aug	S	M-MD
New!	Achillea ptarmica 'Peter Cottontail'	White Yarrow	white	24	June-Sept	S	M-D
	Achillea 'Sassy Summer Lemon'	Yarrow	yellow	30-36	June-Aug	S	M-MD
New!	Achillea 'Cassis'	Red Yarrow	red	20-24	June	S	M-D
	Actaea pachypoda	White Baneberry	white	24-36	May-June	mSh-Sh	WM-M
	Actaea racemosa	Black Cohosh	white	48-60	July-Sept	mSh-Sh	WM-M
	Agastache foeniculum 'Golden Jubilee'	Golden Anise Hyssop	lavender	36	July-Sept	S	M-D
	Allium cernuum	Pink Nodding Onion	pink	10-20	July-Aug	S	WM-MD
	Allium stellatum	Prairie Onion	pink	10-20	July-Aug	S	M-D
	Amsonia 'Blue Ice'	Blue Star	blue	12-15	May-June	S-ltSh	WM-M
	Amsonia hubrichtii	Narrow Leaf Blue Star	blue	18-24	May-June	S-ltSh	WM-M
	Amsonia illustris	Shining Blue Star	blue	18-24	May-June	S-ltSh	WM-M
	Amsonia 'Storm Cloud'	Blue Star	blue	24-30	April-May	S-ltSh	WM-M
	Aquilegia canadensis	Canadian Columbine	red/yellow	12-24	April-May	S-Sh	M-D
	Arisaema triphyllum	Jack-in-the-pulpit	green	8-12	April-May	Sh	WM-M
	Asarum canadense	Wild Ginger	red/brown	12	May-June	S	M-MD
	Asclepias incarnata	Swamp Milkweed	pink	24-48	July-Sept	S	W-M
	Asclepias speciosa	Showy Milkweed	purple	36-48	June-Aug	S-ltSh	M-D
	Asclepias syriaca	Common Milkweed	pink	48-60	June-Aug	S	M-D
	Asclepias sullivantii	Smooth Milkweed	pink	48	June-Aug	S	M-D
	Asclepias tuberosa	Butterfly Milkweed	orange	20-24	July-Aug	S-ltSh	M-D
	Asclepias t. 'Hello Yellow'	Yellow Butterfly Milkweed	yellow	20-24	June-Aug	S-ltSh	M-MD
	Asclepias viridis	Green Milkweed	grn/purple	20-40	May-July	S	M-D
	Asclepias verticillata	Horsetail Milkweed	white	12-36	June-Sept	S-ltSh	D-M
	Astragalus canadensis	Canada Milkvetch	yellow	24	June-Aug	S-ltSh	M-MD
	Baptisia minor	Blue False Indigo	dark blue	15-24	April-June	S	M-MD
	Baptisia 'American Goldfinch'	False Indigo	yellow	35-40	May-June	S	M-MD
	Baptisia 'Blueberry Sundae'	False Indigo	blue	36	May-June	S	M-D
	Baptisia 'Pink Lemonade'	False Indigo	yellow w/pink	36	May-June	S	M-MD
	Baptisia 'Lemon Meringue'	False Indigo	yellow	36	May-June	S	M-MD
New!	Baptisia 'Violet Dusk'	False Indigo	violet	36	May-June	S	M-MD
	Baptisia bracteata var leucophaea	Plains Wild Indigo	cream	12-20	April-May	S	M-D
	Baptisia australis	Blue False Indigo	blue	24-36	April-May	S	M-D
	Baptisia lactea	White Wild Indigo	white	36-48	April-May	S	M-D
	Berlandiera lyrata	Chocolate Flower	yellow	18	May-Oct	S	M-D
	Callirhoe involucrata	Purple Poppy Mallow	red/purple	6	June-July	S	M-D
New!	Callirhoe bushii	Bush's Poppy Mallow	red/purple	12-18	June-July	S-ltSh	M-D
	Callirhoe digitata	Standing Wine Cups	red-purple	24-48	June-July	S	M-D
	Ceanothus americanus	New Jersey Tea	white	24-36	May-June	S-ltSh	WM-MD
	Coreopsis lanceolata	Lance-leaf Coreopsis	yellow	12-24	May-July	S	M-D
	Coreopsis palmata	Tickseed	yellow	24-36	July-Oct	S-ltSh	WM-MD
	Coreopsis grandiflora 'Presto'	Tickseed	yellow	12-24	June-August	S-ltSh	M
	Coreopsis tripteris	Tall Tickseed	yellow	48-72	June-July	S	M-D
	Dalea purpurea	Purple Prairie Clover	purple	15-18	July-Aug	S	M-D
New!	Dalea candida	White Prairie Clover	white	24	May-July	S	M-D
	Dodecatheon meadia 'Aphrodite'	Pink Shooting Star	pink	15	May	ltSh-mSh	WM-MD
	Dodecatheon meadia 'Album'	White Shooting Star	white	15	May	ltSh-mSh	WM-MD

Exposure: S=Sun • ltSh=Light Shade (3-6 hrs shade) • mSh=Medium Shade (7-8 hrs shade) • Sh=Shade (all day shade)

Soil: W=Wet • M=Mesic-average garden soil • D=Dry • FC= fall color

2021 FLORAKANSAS PLANT PRICES

Plant Category

Price

2 1/2" perennials & vines	\$3.95
3 1/2" – 4" perennials & vines	\$5.50
6"-1 gallon perennials & vines	\$12.50
ALL Proven Winner shrubs	\$12.50
1 gallon trees & shrubs	\$12.50
2 gallon trees & shrubs	\$23.00
3-5 gallon trees	\$32.50

A wide selection of herbs will be available from Neff Family Farm at the spring FloraKansas.

Members are encouraged to submit pre-orders as early as possible.

Masking and physical distancing will be observed.

Funds generated from the sale of these plants help support our continuing mission to cultivate transformative relationships between people and the land.

	Echinacea purpurea 'Cygnet White'	White Coneflower	white	18-24	July-Sept	S	M-D
	Echinacea angustifolia	Narrow Leaf Coneflower	pink	18	May-June	S	M-D
	Echinacea pallida	Pale Coneflower	pink	36-48	June-July	S	M-D
	Echinacea paradoxa	Yellow Coneflower	yellow	24-48	June-Aug	S	M-D
	Echinacea purpurea 'Rubinstern'	Ruby Star Coneflower	red	36-42	July-Sept	S-ltSh	WM-MD
	Eryngium yuccifolium	Rattlesnake Master	white	36-48	July-Sept	S	WM-MD
	Engelmannia peristenia	Engelman's Daisy	yellow	24	May-July	S	D
	Ericameria naseosa var naseosa	Rubber Rabbitbrush	yellow	24	Aug-Sept	S	D
New!	Eupatorium 'Prairie Jewel'	Mist Flower	white	36	July-Aug	S-ltSh	WM-MD
	Eupatorium 'Chocolate'	Chocolate Boneset	white	36-48	Aug-Sept	S-mSh	WM-MD
	Eupatorium dubium 'Little Joe'	Dwarf Joe Pye Weed	pink	30-36	June-Sept	S-ltSh	WM-M
	Eurybia divaricatus 'Eastern Star'	Woodland Aster	white	18-24	Sept-Oct	ltSh-mSh	WM-MD
	Filipendula rubra 'Venusta'	Queen of the Prairie	pink	48	May-Aug	S-ltSh	W-M
	Geranium maculatum	Wild Geranium	lavender	12-24	Apr-June	ltSh-Sh	M-MD
New!	Geranium m. 'Crane Dance'	Wild Geranium	purple, red leaves	12-24	Apr-June	ltSh-Sh	M-MD
	Gillenia trifoliata	Indian Physic	white	24-36	May-July	ltSh-Sh	M
	Glandularia canadensis	Rose Verbena	purple/pink	8-18	March-Oct	S	M-D
	Heliopsis 'Tuscan Sun'	Ox Eye Sunflower	orange/ylw	24-36	July-Aug	S	M
	Hepatica americana	Round Liverleaf	white	6-8	March	ltSh-Sh	M
	Hymenoxys scaposa	Perky Sue	yellow	8	May-July	S	M-MD
	Ipomopsis aggregata	Scarlet Gilia	red	36	Aug-Oct	S	D-M
	Iris cristata	Crested Iris	blue	6	May-June	mSh-Sh	WM-M
	Iris virginica shrevei	Blue Flag Iris	blue	18-24	May-June	S-ltSh	W-M
	Iris fulva	Copper Iris	copper red	24-26	May-June	S-ltSh	M-W
	Liatris aspera	Button Blazing Star	purple	24-36	July-Oct	S	M-D
	Liatris ligulistylis	Mountain Blazing Star	purple	12-36	July-Sept	S	M-D
	Liatris punctata	Gayfeather	purple	12-24	July-Sept	S	M-D
	Liatris pycnostachya	Kansas Gayfeather	purple	30-50	July-Aug	S	W-M
	Liatris spicata	Marsh Blazing Star	purple	36	July-Aug	S	W-M
	Linum perenne 'Lewisii'	Blue Flax	blue	15-18	May-Aug	S-ltSh	M-D
	Lobelia 'Blue Select'	Blue Cardinal Flower	blue	24-36	July-Sept	S-ltSh	M-W
	Lobelia cardinalis	Cardinal Flower	red	24-36	July-Sept	S-ltSh	M-W
	Lobelia spicata	Pale-spiked Lobelia	light blue	12-24	June-Aug	S-mSh	M-MD
	Lythrum alatum	Winged Loosestrife	purple	24-36	June-Sept	S	W-MW
New!	Maianthemum racemosum	False Solomon's Seal	white	24-36	April-May	mSh-Sh	M
	Mertensia virginica	Virginia Bluebells	blue	18-24	March-May	S-ltSh	M
	Monarda bradburiana	Eastern Beebalm	pink	12-24	May	S-ltSh	WM-MD
	Monarda fistulosa	Wild Beebalm	pink	36-48	June-Aug	S-ltSh	WM-MD
New!	Monarda punctata	Spotted Horsemint	white/peach	18-24	June-July	S-ltSh	M-MD
	Oenothera macrocarpa	Missouri Evening Primrose	yellow	8-10	May-Sept	S	M-D
	Oenothera m. fremontii	Silver Leaf Evening Primrose	yellow	8-12	May-Sept	S	M-D
	Oligoneuron rigida	Stiff Goldenrod	yellow	36-60	Aug-Oct	S	WM-D
	Packera obovata	Golden Ragwort	yellow	12-16	April-June	ltSh	M-MW
	Parthenium integrifolium	Wild Quinine	white	24-36	June-Sept	S-mSh	M-MD
	Penstemon cobaea	Cobaea Beardtongue	white	9-15	May-June	S	M-D
	Penstemon digitalis	Foxglove Beardtongue	white	12-24	May-June	S-ltSh	M-D
	Penstemon grandiflorus	Shell leaf Penstemon	lavender	24-36	May-June	S	MD-D
	Phlox pilosa	Downy Phlox	lavender	12-16	May-July	ltSh	M
	Phlox divaricata	Woodland Phlox	blue	10-12	April-May	ltSh-Sh	WM-MD
	Phlox d. 'Louisiana Blue'	Woodland Phlox	dark blue	10-12	April-May	ltSh-mSh	WM-M
	Podophyllum peltatum	Mayapple	white	12-18	April	ltSh-Sh	M
	Polemonium reptans	Jacob's Ladder	blue	12-20	April-June	ltSh-Sh	M

Exposure: S=Sun • ltSh=Light Shade (3-6 hrs shade) • mSh=Medium Shade (7-8 hrs shade) • Sh=Shade (all day shade)

Soil: W=Wet • M=Mesic-average garden soil • D=Dry • FC= fall color

	<i>Polygonatum biflorum</i>	Great Solomon Seal	white	24	April-May	Sh	WM-MD
	<i>Pulsatilla patens</i>	Eastern Pasqueflower	lilac/white	6-12	March-April	S	M-D
	<i>Ratibida columnifera</i> 'Red'	Mexican Hat	red/yellow	18-36	Aug-Sept	S	D
	<i>Rudbeckia fulgida</i> var. <i>fulgida</i>	Autumn Coneflower	yellow	24-36	July-Oct	S-ltSh	WM-M
	<i>Rudbeckia maxima</i>	Giant Black-eyed Susan	yellow	60-84	May-July	S	WM-M
	<i>Rudbeckia missouriensis</i>	MO Black-eyed Susan	yellow	12-18	June-Aug	S	WM-MD
	<i>Rudbeckia triloba</i> 'Prairie Glow'	Brown-eyed Susan	orange/yellow	36-48	Aug-Oct	S	M
	<i>Ruellia humilis</i>	Prairie Petunia	lilac	6-8	May-Sept		
	<i>Salvia pitcheri</i> 'Nekan'	Pitcher Sage	blue	36-48	July-Sept	S	M-D
	<i>Scutellaria resinosa</i> 'Smoky Hills'	Resinous Skullcap	purple	6-12	May-July	S	M-D
	<i>Silene regia</i>	Royal Catchfly	red	24-40	July-Aug	S-ltSh	M-MD
	<i>Silphium laciniatum</i>	Compass Plant	yellow	48-96	July-August	S	WM-MD
	<i>Silphium perfoliatum</i>	Cup Plant	yellow	48-96	July-Aug	S-ltSh	WM-M
	<i>Sisyrinchium</i> 'Lucerne'	Blue-eyed Grass	blue	10	May-June	S-ltSh	WM-M
	<i>Solidago canadensis</i> 'Golden Baby'	Dwarf Goldenrod	yellow	18-24	Aug-Oct	S	WM-MD
	<i>Solidago caesia</i>	Bluestem Goldenrod	yellow	18-36	Aug-Sept	S-mSh	M-MD
	<i>Solidago nemoralis</i>	Gray Goldenrod	yellow	12-36	Aug-Oct	S-ltSh	M-D
	<i>Solidago rugosa</i> 'Fireworks'	Fireworks Goldenrod	yellow	36-48	Sept-Oct	S	WM-MD
	<i>Solidago</i> 'Wichita Mountains'	Wichita Mountains Goldenrod	yellow	24	Sept-Oct	S	MD
	<i>Solidago ulmifolia</i>	Elm Leaf Goldenrod	yellow	24-36	Aug-Oct	ltSh-mSh	WM-MD
	<i>Stanleya pinnata</i>	Prince's Plume	yellow	36-60	June-Sept	S	D
	<i>Stylophorum diphyllum</i>	Yellow Wood Poppy	yellow	15	May-July	Sh	WM-MD
New!	<i>Symphotrichum</i> 'Alert'	Dwarf Aster	deep pink	12	Sept-Oct	S	M-D
	<i>S. ericoides</i> 'Snow Flurry'	Heath Aster	white	6-8	Sept-Oct	S	WM-MD
	<i>Symphotrichum laevis</i> 'Bluebird'	Smooth Blue Aster	blue	24-36	Aug-Oct	S-mSh	WM-MD
	<i>S. lateriflorus</i> 'Lady in Black'	Calico Aster	white	36	Aug-Oct	S-ltSh	WM-M
	<i>S. novae-angliae</i> 'Alma Potschke'	New England Aster	pink	36	Aug-Sept	S-ltSh	WM-M
New!	<i>S. novae-angliae</i> 'Grape Crush'	New England Aster	purple	26-36	Aug-Sept	S-ltSh	WM-M
New!	<i>S. novi-belgii</i> 'Woods Blue'	Dwarf New York Aster	blue	14	Sept-Oct	S-ltSh	WM-MD
	<i>S. oblongifolium</i> 'October Skies'	October Skies Aster	blue	18	Sept-Oct	S	WM-MD
	<i>S. oblongifolium</i> 'Raydon's Favorite'	Aromatic Aster	blue	30-36	Oct-Sept	S	WM-MD
	<i>Symphotrichum sericeus</i>	Silky Aster	purple	12	Sept-Oct	S-ltSh	MD-D
	<i>Talinum calycinum</i>	Flameflower/Rock Pink	purple/pink	10	July	S	D-M
New!	<i>Tradescantia occidentalis</i>	Prairie Spiderwort	blue	10-24	May-Sept	S-mSh	WM-MD
	<i>Tradescantia tharpaii</i>	Shortstem Spiderwort	purple	8-18	March-Apr	S	MD-D
	<i>Verbena hastata</i>	Blue Vervain	purple	24-48	July-Sept	S	M-MW
	<i>Vernonia lettermanii</i> 'Iron Butterflies'	Letterman's Ironweed	purple	30-36	Sept-Oct	S-ltSh	M-MD
	<i>Viola pedata</i>	Birds Foot Violet	purple	3-6	March-May	S-ltSh	M-D
	<i>Veronicastrum</i> v. 'Lavender Towers'	Culver's Root	lavender	36-72	June-Aug	S-ltSh	WM-M
	<i>Zizia aptera</i>	Meadow Zizia	yellow	16-28	May	S-ltSh	M
	<i>Zizia aurea</i>	Golden Alexander	yellow	24-36	April-June	S-ltSh	WM-MD

FERNS

	<i>Athyrium</i> 'Lady in Red'	Lady Fern	bright grn fronds	24-36	N/A	mSh-Sh	WM-M
	<i>Dryopteris erythrosora</i>	Autumn Fern	copper fronds	24-30	N/A	mSh-Sh	WM-M
	<i>Matteuccia struthioeris</i>	Ostrich Fern	green fronds	36-72	N/A	ltSh-Sh	W-M
	<i>Polystichum acrostichoides</i>	Christmas Fern	green fronds	12-20	N/A	mSh-Sh	W-M

GRASSES

New!	<i>Andropogon gerardii</i> 'Pawnee'	Big Bluestem	grass	60-72	July-Oct	S	WM-D
	<i>Andropogon</i> g. 'Blackhawks'	Big Bluestem	grass	60-72	July-Oct	S	WM-MD
	<i>Andropogon</i> g. 'Dancing Wind'	Big Bluestem	grass	60-72	July-Oct	S	D
	<i>Bouteloua gracilis</i> 'Blonde Ambition'	Golden Blue Grama	grass	12-24	Aug-Oct	S	WM-D
	<i>Calamagrostis acutiflora</i> 'Karl Foerster'	Feather Reed Grass	grass	48-60	August	S-ltSh	WM-MD
	<i>Calamagrostis acutiflora</i> 'Avalanche'	Variagated Feather Reed Grass	grass	48-60	Aug-Oct	S-ltSh	WM-MD
	<i>Calamagrostis brachytricha</i>	Korean Feather Reed	grass	36-48	Aug-Oct	S-ltSh	WM-MD
	<i>Carex albicans</i>	White-tinged Sedge	sedge	8-18	Aug-Oct	ltSh-mSh	WM-MD
	<i>Carex appalachica</i>	Moutain Sedge	sedge	8-12	July	ltSh-mSh	WM-MD
	<i>Carex brevoir</i>	Plains Oval Sedge	sedge	12	June-July	ltSh-mSh	WM-MD
	<i>Carex oshimensis</i> 'Evergold'	Japanese Sedge	sedge	12	May	ltSh-Sh	M-D
	<i>Carex pennsylvanica</i>	Pennsylvania Sedge	sedge	8-10	Aug-Oct	mSh-Sh	D
New!	<i>Carex rosea</i>	Rosy Sedge	sedge	12	Aug-Oct	ltSh-Sh	WM-MD
	<i>Carex texensis</i>	Texas Sedge	sedge	10-12	April-May	ltSh-Sh	WM-MD
	<i>Chasmanthium latifolium</i>	Northern Sea Oats	grass	36	Aug-Oct	S-Sh	WM-MD
	<i>Deschampsia cespitosa</i>	Tufted Hair Grass	grass	12-24	July-Sept	ltSh	M
	<i>Eragrostis spectabilis</i>	Sand Love Grass	grass	36-48	Aug-Oct	S	M-MD
	<i>Eragrostis ellotii</i> 'Wind Dancer'	Sand Love Grass	grass	12-24	July-Oct	S-ltSh	M-D
	<i>Miscanthus sinensis</i> 'Fire Dragon'	Miscanthus	grass	72-84	Aug-Oct	S-ltSh	WM-MD
	<i>Miscanthus</i> 'Octoberfest'	Miscanthus	grass	60	Aug-Oct	S-ltSh	WM-MD
	<i>Muhlenbergia capillaris</i>	Ruby Muhly Grass	grass	36	July	S-ltSh	WM-M
	<i>Nassella tenuisima</i>	Mexican Feather	grass	24	June	S	M-D
	<i>Panicum virgatum</i> 'Dallas Blues'	Tall Switchgrass	grass	48-96	July-Oct	S	WM-MD
	<i>Panicum</i> v. 'Cheyenne Sky'	Red Switchgrass	grass	36-48	July-Oct	S	WM-MD
	<i>Panicum</i> v. 'Northwind'	Upright Switchgrass	grass	48-60	July-Oct	S	WM-MD
	<i>Panicum</i> v. 'Purple Tears'	Purple Switchgrass	grass	36-48	June-Oct	S	WM-MD
New!	<i>Pennisetum</i> 'Cassian'	Dwarf Fountain grass	grass	20-28	Aug-Oct	S-ltSh	WM-M
	<i>Schizachyrium scop.</i> 'Standing Ovation'	Little Bluestem	grass	36-48	July-Oct	S	M-D
	<i>Schizachyrium</i> s. 'Twilight Zone'	Little Bluestem	grass	48-54	July-Oct	S	M-D
New!	<i>Schizachyrium</i> s. 'Carosel'	Little Bluestem	grass	24-30	July-Oct	S	M-D
	<i>Schizachyrium</i> s. 'Blaze'	Little Bluestem	grass	24-36	July-Oct	S	M-D

Sorghastrum nutans	Indiangrass	grass	48-60	July-Oct	S	WM-D
Sporobolus heterolepis	Prairie Dropseed	grass	18	June-Oct	S-ltSh	M-D

SHRUBS

	Amelanchier arborea	Serviceberry	white	15'-20'	March-April	S-ltSh	M
	Amorpha canescens	Leadplant	purple	24-36	June-July	S	M-D
	Aronia 'Low Scape Mound'	Low Growing Chokeberry	pink/white	12-24	May-June	S-ltSh	WM-MD
New!	Aronia 'Ground Hog'	Ground Cover Chokeberry	pink/white	8-14	May-June	S-ltSh	WM-MD
	Aronia melanocarpa 'Viking'	Viking Chokeberry	white fl w/blk fruit	36-60	May-June	S-mSh	WM-M
	Buddleia x Lo & Behold 'Blue Chip'	Blue Chip Butterfly Bush	lavender	24-30	June-Sept	S	M
	Buddleia 'Pugster Amethyst'	Purple Butterfly Bush	dark purple	24-36	June-Sept	S	M
	Buddleia 'Miss Molly'	Red Butterfly Bush	dark red	40-60	June-Sept	S	M
New!	Buddleia 'Grand Cascade'	Large-flowered Butterfly Bush	lilac	48-60	Aug	S	M-MW
New!	Buddleia 'Queen of Hearts'	Butterfly Bush	dark pink	36	Aug	S	M-MW
New!	Buddleia '3 in One'	Multicolor Butterfly Bush	pinks and purples	40-60	July-Sept	S	M-MW
	Callicarpa 'Puprle Pearls'	Japanese Beautyberry	purple fruit	48-60	fall fruit	S-mSh	WM-M
	Callicarpa americana	American Beautyberry	purple fruit	24-36	fall fruit	S-ltSh	WM-M
New!	Calycanthus f. 'Simply Scentsational'	Sweetshrub	maroon	60	June-July	ltSh-mSh	M-MW
	Caryopteris 'Beyond Midnight'	Bluebeard	blue	24-30	Aug-Oct	S	M-MD
New!	Caryopteris 'Beyond Pink'd'	Pink Bluebeard	pink	24-30	Aug-Oct	S	M-MD
	Caryopteris 'Sunshine Blue II'	Bluebeard	blue	24-36	July-Sept	S	M-MD
	Cephalanthus 'Sugar Shack'	Buttonbush	white	36-48	July-Aug	S-ltSh	W-M
	Corylus americana 'Sun Harvest'	Sun Harvest Filbert	brown	72-96	April	S-ltSh	WM-MD
	Cotinus 'Golden Spirit'	Chartreuse Smokebush	pink	72-96	June-July	S-mSh	WM-M
	Cotinus 'Grace'	Grace Smokebush	pink	15'	June-July	S-ltSh	WM-MD
	Hamamelis virginiana	Witchazel	pink	15'	Oct-Dec	S-mSh	M
	Hamamelis vernalis	Ozark Witchazel	yellow/red	6-10	Jan-April	S-mSh	M
	Heptacodium miconioides	Seven Son Flower	white	10'-15'	Aug-Oct	S-ltSh	WM-M
	Heptacodium 'Temple of Bloom'	Seven Son Flower	white	72-120	Aug	S-ltSh	WM-M
	Hydrangea arborescens	Smooth Hydrangea	white	36-60	June-Sept	mSh	M
	Hydrangea arb. 'Invincibelle Wee White'	Dwarf Hydrangea	white	12-30	June-Aug	S-ltSh	W-M
	Hydrangea arb. Invincibelle Ruby	Hydrangea	pink	24-36	June-July	S-ltSh	W-M
	Hydrangea paniculata 'BOBO'	Bobo® Hardy Hydrangea	white	30-48	June-Aug	ltSh-mSh	WM-M
	Hydrangea p. 'Little Lime'	Little Lime Hydrangea	lime/white	36-48	June-Aug	ltSh-mSh	WM-M
New!	Hydrangea q. 'Gatsby Pink'	Pink Oakleaf Hydrangea	white to pink	48-60	June-Aug	ltSh-Sh	WM-M
	Hydrangea q. 'Little Honey'	Golden Oakleaf Hydrangea	white, red FC	36-48	June-Aug	ltSh-Sh	WM-M
	Hydrangea q. 'Ruby Slippers'	Ruby Blooming Hydrangea	ruby	36	June-Aug	ltSh-Sh	WM-M
	Ilex 'Mr Poppins'	Winterberry Holly	male (pollinator)	72-96	Nov-Jan	S-ltSh	M
	Ilex 'Gem Box'	Inkberry Holly	berries	24-36	Nov-Jan	S-ltSh	M
	Ilex 'Berry Poppins'	Winterberry Holly	berries	36-48	Nov-Jan	S-ltSh	M
	Ilex 'Berry Heavy Gold'	Gold Winterberry Holly	berries	60-72	Nov-Jan	S-ltSh	M
	Ilex 'Berry Heavy'	Red Winterberry Holly	berries	60-72	Nov-Jan	S-ltSh	M
	Lagerstroemia 'Infinיתי Brite Pink'	Dwarf Pink Crapemyrtle	pink	24-48	June-Sept	S	WM-MD
	Lagerstroemia 'Dynamite'	Dynamite® Crapemyrtle	red	36-48	July-Sept	S	M-MD
New!	Lagerstroemia 'Rikki Tikki Rouge'	Red Crapemyrtle	red	36-60	July-Sept	S	M-MD
	Lindera benzoin	Spicebush	red fruit ylw FC	6-12'	July-Oct	S-mSh	WM-M
New!	Lonicera caerulea 'Yezberry Maxie'	Haskap	edible	60-72	June	S-ltSh	M
	Philadelphus microphyllus	Little Leaf Mockorange	white	40-60	June	S-ltSh	M
	Physocarpus opuli. 'Amber Jubilee'	Golden Ninebark	white	60	May-June	S-ltSh	M
	Physocarpus o. 'Tiny Wine'	Dwarf Ninebark	white	36-48	May-June	S-ltSh	WM-M
	Physocarpus o. 'Coppertina'	Ninebark	white	48-72	May-June	S-ltSh	WM-M
	Prunus besseyi 'Pawnee Buttes'	Western Sand Cherry	white	12-15	May-June	S	M-MD
	Prunus virg. 'Canada Red Select'	Red Leaf Chokecherry	white	12-16	May	S	WM-MD
	Rhus aromatica 'Gro-Low'	Gro-Low Fragrant Sumac	yellow	24-48	May-June	S-ltSh	WM-MD
	Rhus typhina 'Tiger Eyes'	Tiger Eyes Ctlf Sumac	yellow leaves	60-72	Aug-Sept	S-ltSh	WM-MD
	Rubus 'Hull'	Thornless Blackberry	edible	60-96	June	S	WM-M
New!	Rubus 'Latham'	Red Raspberry	edible	36-48	May	S-ltSh	WM-M
	Salix 'Black Cat'	Pussywillow	black	10-12'	April-May	S	M
New!	Sambucus canadensis 'Bob Gordon'	Elderberry	white	72-120	June-July	S-mSh	W-M
	Sambucus c. 'York'	Elderberry	white	72-120	June-July	S-mSh	W-M
	Sambucus nigra 'Black Lace'	Ornamental Elderberry	white/pink	6-8'	June-July	S-mSh	WM-M
	Sambucus racemosa 'Lemony Lace'	Ornamental Elderberry	white	36-60	June-July	S-mSh	WM-M
	Spirea japonica 'Blue Kazoo'	Dwarf Blue Spirea	white	24-36	May-June	S-ltSh	WM-M
	Symphoricarpos 'Proud Berry'	Coral Berry	pink	24-48	Aug-Oct	S-ltSh	M
	Syringa x 'Bloomerang'	Reblooming Purple Lilac	dk purple	48-72	May-Sept	S-ltSh	WM-M
	Syringa h. 'Scentra Double Blue'	Standard Lilac	indigo	72-96	April-May	S	W-M
	Syringa vulgaris 'Prairie Petite'	Dwarf Standard Lilac	purple	48-48	April-May	S	M-MD
	Viburnum nudum 'Brandywine'	Smooth Witherod	white	60-72	April-May	S	M
	Viburnum burkwoodii	Burkwood Viburnum	white	8'-12'	April	S-ltSh	M
	Viburnum cassinoides 'Lil Ditty'	Dwarf Viburnum	white	12-24	May-June	S-mSh	WM-M
	Viburnum carlesii 'Spice Baby'	Dwarf Koreanspice Bush	white	48-60	May-June	S-ltSh	WM-M
	Viburnum dentatum 'Blue Muffin'	Blue Muffin Viburnum	white	5' X 7'	May	S-mSh	WM-M
New!	Viburnum 'Tandoori Orange'	Linden Viburnum	white	7' X 7'	May	S-mSh	WM-M
	Viburnum 'Red Balloon'	Red Balloon Viburnum	white	7' X 7'	May	S-ltSh	WM-M
	Viburnum prunifolium	Blackhaw Viburnum	white	8' X 12'	May-June	S-ltSh	WM-MD
	Viburnum x rhytidop. 'Allegheny'	Leather-leaf Viburnum	white	8' X 10'	May-June	S-ltSh	WM-M

Exposure: S=Sun • ltSh=Light Shade (3-6 hrs shade) • mSh=Medium Shade (7-8 hrs shade) • Sh=Shade (all day shade)

Soil: W=Wet • M=Mesic-average garden soil • D=Dry

VINES

	Ampelopsis brevipedunculata elegans	Porcelain Berry	blue berries	vine	July	S-Sh	M-MD
	Celastrus scandens 'Bailumn'	Autumn Revolution Bittersweet	fall red berries	vine	Aug-Oct	S-Sh	WM-MD
	Lonicera sempervirens 'Major Wheeler'	Trumpet Honeysuckle	red	vine	May-Aug	S-mSh	WM-M
	Vitis coignetiae	Wild Grape Vine	brilliant red FC	vine	Sept-Oct	S-mSh	WM
	Wisteria 'Aunt Maude'	Hardy Wisteria	blue/violet	vine	June	S-ItSh	WM-M

TREES

	Acer saccharum	Sugar Maple	red/orange FC	50' X 50'		S-mSh	WM-M
	Asimina triloba	Pawpaw Tree	brown	20'	April-May	S-Sh	WM-MD
	Carya laciniosa	Shellbark Hickory	fall color, nuts	60' X 40'		S-ItSh	M-MW
	Carya texana	Black Hickory	nuts	70' X 40'		S-ItSh	M-MD
New!	Castanea dentata	American Chestnut	white	60x50	June	S	M
New!	Catalpa speciosa	Catalpa	white	70' X 50'	May-June	S-ItSh	WM-M
	Cercis canadensis	Redbud	pink	20-30 X 25-35'	April-May	S-mSh	WM-MD
New!	Chionanthus virginicus	Fringetree	white	20' X 20'	May-June	S-ItSh	M
	Cladrastis kentuckea	Yellowwood	white	50' X 40'	May	S-ItSh	M
	Diospyros virginiana	Persimmon	cream	40' X 25'	May-June	S-mSh	WM-MD
	Euonymus atropurpureus	Eastern Wahoo	purple bloom, FC	20' X 15'	June	ItSh-mSh	M
	Ilex decidua	Deciduous Holly	red berries	10' X 5'		S-mSh	M-W
	Juniperus virginiana 'Taylor'	Taylor Juniper	evergreen	25'x3'		S	M-D
New!	Liriodendron tulipifera	Tulip Tree	yellow	60' X 30'	May-June	ItSh	M
	Magnolia x loebneri	Dr. Merrill Magnolia	white/pink	20' X 30'	Mar-April	S-mSh	M
New!	Nyssa sylvatica	Black Tupelo	green/white	40' X 30'	May-June	S-mSh	W-M
	Ostrya virginiana	Ironwood	white	30-50' x 25'		S-mSh	WM-M
	Picea glauca var. densata	Black Hills Spruce	evergreen	30' X 15'		S-mSh	M-D
	Pinus strobus	Eastern White Pine	evergreen	80' X 40'		S-ItSh	M
	Pinus rigida x taeda	Pitch Loblolly Pine	evergreen	40' X 30'		S-ItSh	M-MD
	Populus tremuloides 'NE-Arb'	Prairie Gold Quaking Aspen	golden yellow FC	30' X 15'		S-ItSh	WM-M
	Prunus serotina	Black Cherry	white	40x30		S-ItSh	WM-M
	Ptelea trifoliata	Hop Tree	green/white	15'x15'	June	ItSh-mSh	M
	Quercus alba	White Oak	red fall color	60-80' X 60-80'		S-ItSh	WM-MD
	Quercus x jackiana	White x Swamp Oak	red fall color	70 X 45		S-ItSh	W-M
	Quercus macrocarpa	Bur Oak	great shade	60-80' X 60-80'		S-ItSh	WM-MD
	Quercus muehlenbergii	Chinquapin Oak	prolific acorns	50' X 60'		S	M-D
	Quercus prinoides	Dwarf Chinquapin Oak	compact oak	12' X 10'		S	M-D
	Quercus shumardii	Shumard Oak	nice FC	70-100		S-ItSh	WM-MD
	Quercus velutina	Black Oak	good shade	50' X 60'		S-ItSh	M-MD
	Taxodium distichum	Bald Cypress	orange FC	50' X 30'		S-ItSh	WW-M
	Thuja 'Full Speed A Hedge'	Arborvitae	evergreen	25' X 4'		S-ItSh	M
	Tilia americana	American Linden	yellow FC	60-75' X 40'	May	S-ItSh	WM-M

TEMPERENNIALS

	Coleus Color Clouds™ 'Valentine'	Coleus	red lvs w/ thin ylw margins	20	May-Oct	ItSh-Sh	WM-M
	Gaillardia aristata 'Arizona Red Shades'	Blanket Flower	red	10-12	May-Sept	S	M-MD
	Salvia elegans 'Golden Delicious'	Pineapple Sage	red	36-48	June-Sept	S	WM-MD

ADAPTABLE PERENNIALS

New!	Acanthus spinosus	Bear's Breeches	white w/ pink	36	June-Aug	ItSh-mSh	M-MW
	Agastache 'Blue Boa'	Hummingbird Mint	violet blue	24-30	June-Sept	S	M-MD
	Agastache 'Firebird'	Hummingbird Mint	red/orange	24-36	June-Sept	S	M-D
New!	Agastache 'Morello'	Hummingbird Mint	peach/pink	17-22	June-Sept	S	M-MD
	Ajuga 'Black Scallop'	Dark Leaf Carpet Bugle	blue	3-5	June-Sept	S-ItSh	M
New!	Ajuga 'Caitlin's Giant'	Carpet Bugle	blue	6-10	June-Sept	S-ItSh	M
	Allium 'Millenium'	Ornamental Onion	purple	12-20	July-Aug	S-ItSh	M-D
New!	Allium 'Lavender Bubbles'	Ornamental Onion	purple	14	Aug-Sept	S	M-D
New!	Allium 'Windy City'	Ornamental Onion	purple	18	July-Aug	S	M-D
New!	Anemone 'Robustissima'	Grapeleaf Anemone	pink	24-36	Aug-Sept	ItSh-mSh	M-MW
	Angelica gigas	Purple Parsnip	purple	60	July	ItSh	M
	Antennaria dioica 'Rubra'	Pussy Toes	pink	4-6	May-June	S-ItSh	M-D
	Aquilegia chrysantha	Yellow Columbine	yellow	18-24	April-May	S-ItSh	M-MD
	Aquilegia 'Leprechaun Gold'	Varigated Leaf Columbine	purple	18	April-May	ItSh	M
	Aquilegia 'Swan Violet and White'	Violet Columbine	violet/white	16-22	April-May	ItSh-mSh	WM-M
	Aquilegia 'Blue Jay'	Blue Columbine	blue	20-28	May-June	ItSh-mSh	WM-M
	Aralia cordata 'Sun King'	Golden Japanese Spikenard	white shades	30-36	July-Sept	mSh-Sh	WM-M
	Aruncus aethusifolius	Goat's Beard	cream/white	30	June-July	mSh-Sh	WM-M
	Aster 'Grape Crush'	New England Aster	purple	30	Sept	S-ItSh	M
	Astilbe 'Visions'	Astilbe	purple	12-15	July-Aug	mSh-Sh	WM-M
	Brunnera 'Jack Frost'	Heartleaf Brunnera	blue	10-14	April-May	mSh-Sh	WM-M
New!	Calamintha nepeta var nepeta	Calamint	white	12-18	June-Sept	S-ItSh	M-MD
	Ceratostigma plumbaginoides	Plumbago	blue	6-8	July-Sept	S-mSh	WM-M
	Convallaria majalis	Lily of the Valley	white	6-8	May-June	ItSh-Sh	WM-M
New!	Coreopsis SunKiss	Tickseed	yellow w/ red	14	May-Sept	S-ItSh	M
	Coreopsis 'Jethro Tull'	Tickseed	red	15-18	May-Oct	S-ItSh	WM-MD
	Crocisima 'Lucifer'	Montbretia	scarlett red	30-36	July-Aug	S-ItSh	M
	Echinacea 'Rainbow Marcella'	Coneflower	pink	16-20	June-Aug	S-ItSh	M-MD
	Echinacea 'Green Twister'	Coneflower	green/purple	24-36	June-Aug	S-ItSh	M-D
	Echinacea 'Salsa Red'	Coneflower	red	12-16	June-Aug	S-ItSh	M-MD

	Echinacea 'Baja Burgundy'	Coneflower	pink/burgundy	18-20	June-Aug	S-ItSh	M-MD
	Echinacea 'Fine Feathered Parrot'	Coneflower	yellow/red	18-20	June-Aug	S-ItSh	M-MD
	Echium amoenum	Red Feathers	red	10-16	May-June	S	M-MD
New!	Echinops ritro	Globe Thistle	blue	24-48	July-Aug	S	M-D
	Epilobium fleischeri	Alpine Willowherb	pink	20	May-Aug	S-ItSh	M-D
	Ephedra regeliana	Minature Joint Fir	n/a	6-12	Aug	S	D
	Eryngium amethystinum	Sea Holly	purple	20	July-Sept	S	D
	Galium odoratum	Sweet Woodruff	white	8-12	April-May	mSh-S	WM-M
	Gaura 'Pink Cloud'	Wand Flower	light pink	12-14	June-Aug	S	D-MD
	Geranium 'New Hampshire Purple'	Hardy Geranium	purple	12-20	June-Sept	S-mSh	M
	Helleborus 'First Dance'	Hellebore	yellow	18-24	March-April	mSh-Sh	M-D
	Heuchera 'Chocolate Ruffles'	Coral Bells	maroon leaf	12	May-Oct	S-mSh	M
	Heuchera 'Black Pearl'	Coral Bells	black leaf	10-12	May-July	ItSh-mSh	M
	Heuchera 'Pretty Pistachio'	Coral Bells	lime green leaf	12-16	June-Aug	ItSh-mSh	M
	Hibiscus 'Holy Grail'	Rose Mallow	red	48	July-Sept	S-ItSh	W-M
	Hibiscus 'Starry Night'	Rose Mallow	white/pink	48	July-Sept	S-ItSh	W-M
	Knautia macedonica	Pincushion Flower	red	12-15	May-Aug	S	M
	Knifofia 'Red Hot Popsicle'	Red Hot Poker	orange/red	20-27	July-Sept	S	M-D
	Lamium gal. 'Hermon's Pride'	Silver Nettle	yellow	6-8	May-June	S-Sh	WM-MD
	Lavandula 'Phenomenal'	Lavender	lavender	24-36	June-Sept	S	M-D
	Lavandula 'Hidcote'	Lavender	lavender	18-20	June-Aug	S	M-D
	Lavandula 'Grosso'	Lavender	purple	24	July-Aug	S	MD-D
	Lavandula 'Sensational'	Lavender	purple	28	July-Aug	S	MD-D
	Lespedeza thunbergii 'Samindare'	Pink Bush Clover	pink	36-48	Aug-Sept	S-Itsh	WM-MD
	Monarda didyma 'Grape Gumball'	Sugar Buzz™ Bee Balm	purple	20-24	June-Aug	S-ItSh	WM-M
	Origanum 'Amethyst Falls'	Ornamental Oregano	purple	15	May-July	S-ItSh	M-MD
	Paeonia 'Bartzella'	Intersectional Peony	yellow	48	June	S-ItSh	M
	Penstemon 'Dark Towers'	Beardtongue	pink	30	May-June	S-ItSh	M-MD
	Perovskia a. 'Sage Advice'	Russian Sage	purple	36	July-Sept	S-ItSh	M-MD
	Perovskia 'Denim n' Lace'	Russian Sage	blue/lavender	28-32	July-Sept	S-ItSh	M-MD
New!	Persicaria 'Golden Arrow'	Fleeceflower	red	24	July-Sept	ItSh-mSh	M-W
New!	Phlox subulata 'Blue Emerald'	Creeping Phlox	lilac/blue	6	June	ItSh-mSh	M
	Polygonatum 'Variegatum'	Variegated Solomon Seal	white	24-36	April-May	Sh	WM-MD
	Rudbeckia f. 'American Gold Rush'	Black-eyed Susan	yellow	12-24	July-Sept	S	M-MD
	Rubecia 'Glitters Like Gold'	Blacy-eyed Susan	yellow	15-18	July-Sept	S	M-MD
	Salvia greggii 'Furman's Red'	Autumn Sage	red	18-24	Aug-Sept	S	M-MD
	Salvia x nemerosa 'Caradonna'	Caradonna Sage	dark purple	18-30	May-June	S	M-MD
New!	Salvia 'Evening Attire'	Garden Sage	blue	22	May-June	S	M-MD
New!	Salvia 'Moulin Rouge'	Garden Sage	pink	26	May-June	S	M-MD
	Santolina chamaecyparissus	Gray Santolina	yellow	15	June-Aug	S	D
	Sedum seiboldii	Stonecrop	pink	4	Sept-Oct	S	D-M
New!	Sedum 'Carl'	Sedum	pink	18	Aug-Sept	S	M-MD
	Senna hebecarpa	Wild Senna	yellow	48-60	July	ItSh-mSh	M-MD
New!	Thermopsis villosum	Carolina lupine	yellow	36-48	July	S-ItSh	M
New!	Thymus 'Coccineus'	Creeping Thyme	pink	4	June-July	S-ItSh	M-D
	Vaccinium vitis-idaea	Lingonberry	edible	8-12"	Sept	ItSh	W-M
	Veronica liwanensis	Turkish Speedwell	blue	3	May-June	S-mSh	M-D
	Veronica 'Blue Bomb'	Spike Speedwell	blue	16-24	May-Oct	S-ItSh	M
	Waldsteinia ternata	Barren Strawberry	yellow	6	April-May	ItSh	M-MD
New!	Zauschneria garetii 'Orange Carpet'	Hummingbird Trumpet	orange	4-6	June-Sept	S-ItSh	M-D

VARIOUS HOSTAS:

Brother Stefan, Forbidden Fruit, Snake Eyes, Halcyon, Abiqua Drinking Gourd, June, Sagae, Warwick's Comet

MEMBERS MAY PRE-ORDER YOUR PLANTS BEGINNING NOW THROUGH APRIL 22nd. *To ensure the greenhouse is well-stocked for FloraKansas, please submit your pre-orders as EARLY as possible.*

To order, visit dyckarboretum.org/florakansas-spring. Once your order is received, we will communicate further about pickup procedures. We process orders in the sequence that they are received. You may pick up your plants as soon as you receive your invoice email.

If you are not yet a member, but would like to pre-order, you may include a membership fee with your order. Welcome aboard!

THREE GARDEN KITS WILDLIFE WILL LOVE!

Suffering from garden planning decision fatigue? No sweat - we've pre-selected these plant combinations to bring wildlife to your yard. Combine the Host Plant Medley with your favorite nectar plants and you'll be sure to see pollinator diversity increase over the next few years. Want to support monarchs throughout their life cycle? Choose the Monarch Special. Have a tricky shady spot that needs some drought-tolerant natives to attract wildlife - we've got a kit that is "Made for the Shade".

HOST PLANT MEDLEY (SUN, DRY SOIL) • 20 plants for \$77 (+ tax)



Scientific names and insects hosted, from left to right: *Viola pedata*, for fritillaries • *Schizachyrium scoparium*, for Delaware skippers • *Zizia sp.*, for black swallowtails • *Echinacea sp.*, for checkerspot • *Asclepias sp.*, for monarchs, queens and *Cynthia* moths • *Pycnanthemum sp.* is a great addition to provide nectar for all!

MONARCH SPECIAL KIT (SUN, DRY-MEDIUM SOIL) • 25 plants for \$97 (+ tax)



Scientific names from left to right: *Achillea millefolium*, *Panicum virgatum*, *Rudbeckia missouriensis*, *Asclepias syriaca* OR *Asclepias sullivantii*, *Asclepias tuberosa*, *Liatris sp.*, *Solidago sp.* (likely 'Wichita Mountains'), *Aster sp.* (likely 'October Skies')

MADE FOR THE SHADE KIT (SHADE, MEDIUM SOIL) • 25 plants for \$97 (+ tax)



Scientific names from left to right: *Carex sp.*, *Geranium maculatum*, *Aquilegia canadensis*, *Zizia aurea* or *Zizia aptera*, *Aster divaricatus*, *Packera obovata*, *Polygonatum sp.*, *Phlox divaricata*

Plant arrangement/design suggestions will be made available to those who purchase these kits.