

CONTENTS

FIMO® kids

FIMO® kids	Tutorial "Door sign for children's room"	10
	Individual colours, displays, colour packs	11-13
	form&play	14-20
	create&play	21
	funny kits	22-23
	toolbox	24-25
	work&play	26-27

FIMO® soft / FIMO® effect / FIMO® liquid / FIMO® leather-effect

FIMO® soft	Tutorial "Urban Jungle"	30
	Individual colours, displays	31-32
	Colour packs	33-35
	Creative sets	36-37
FIMO® effect	Individual colours, displays, colour packs	38-42
FIMO® liquid	Oven-hardening liquid gel	43
FIMO® leather-effect	Tutorial "Bow pin", Individual Colours, DIY sets, displays	44-47
FIMO®	MADE BY YOU ♥	49-53
	Fantasy globes	54-55
	Bead roller, bead piercing needles	56-57
	Creative accessories	58-60
	Texture sheets	61-63
	Silicone push moulds	64-66
	clay moulds	67-69
	Leaf metal, varnishes	70-71

FIMO® professional / FIMO® professional doll art

FIMO® professional	Tutorial "Necklace made of FIMO and leaf metal"	74
	Individual colours, display, colour packs	75-77
FIMO® professional doll art	Individual colours, display, colour packs	78-79
FIMO® professional modelling tools	Cutters, clay extruder, scraper set, modelling tools	80-83

FIMOair®

FIMOair®	Tutorial "Summer lanterns"	86
FIMOair® basic, natural	Individual colours	88
FIMOair® light	Individual colours	89

Noris® dough & clay

Noris® Modelling dough & modelling clay		92-93
---	--	-------

FIMO® colour display		94-97
----------------------	--	-------

FIMO® Metal tower		98-99
-------------------	--	-------

FIMO® Brand Shop		100-107
------------------	--	---------

With **FIMO® kids** (p. 10 ff.) easy modelling is guaranteed! It is **particularly smooth, easy to shape** and available in a wide variety of bright colours. This modelling clay lets the young artists run free with their imagination and create their own toys.



With **FIMO® soft** (p. 30 ff.) you can turn your ideas into reality. The soft modelling clay is ready to use and easy to blend – **ideal for beginners and hobby artists**. Easily workable, it has **24 brilliant colours** for you to work with!

FIMO® effect (p. 38 ff.) gives your artwork that certain something: your creation will **shine, shimmer and sparkle**. Available in a **variety of different shades and effects** like nightglow or gemstone, this opens up a whole world of stunning options.



FIMO® liquid (p. 43 ff.) is an oven-hardening gel, suitable for **beginners as well as for more advanced users**. It has a thick and fluid consistency. After hardening, it is extremely flexible. FIMO liquid comes with a practical dosage tip for **pinpoint application and clean handling**. It is available in different colours like gold, silver, black and also in transparent. It is compatible with FIMO soft, FIMO effect, FIMO leather-effect and FIMO professional.

With **FIMO® leather-effect** (p. 44 ff.) you can create projects with a **leather-like look!** As the texture and colour palette of FIMO leather-effect are reminiscent of real leather. After hardening, the clay stays flexible and can be cut, sewn and embossed. **12 natural, strong colours** invite to create and try out.





FIMO® Accessories & tools (p. 56 ff.) help you take your creations to the next level: with these useful accessories you can easily embellish your artworks, create **unique details** as well as original **patterns and designs**. Our numerous FIMO accessories offer you modelling tools and acrylic rollers, moulds and varnishes as well as a large selection of decorative items.

FIMOair® (p. 86 ff.) is the perfect alternative to traditional clay. This mass is particularly easy to work with because it is not fired in an oven – **it air dries**.

Even after that, you can continue to process your creation by **sanding, drilling, filing, painting or polishing** it.



FIMO® professional (p. 74 ff.) is the clay for meeting the highest requirements of professionals, artists and advanced clay users. Its firm consistency allows **detailed** working and guarantees **dimensional stability**.

FIMO® professional doll art (p. 78 ff.) is specifically suitable for **filigree doll and sculpture modelling** – thanks to its very high dimensional stability. The modelling clay is ideal for adding parts and smoothing over joints. Due to the special formula with excellent opacity, **6 natural skin tones** can be used to create enchanting miniature faces. The colours can be mixed perfectly to give the modelled faces lifelike character with **semimatt porcelain finish**.



Tips & Tricks

for working with FIMO



The right working surface

You can use a range of working surfaces for FIMO: **tiles**, **glass sheets** or **backing paper**. These surfaces ensure that no unwanted patterns are created on the FIMO as you work. They are also particularly easy to remove the modelling clay from.

Keeping hands and work surfaces clean

It is best to clean your hands and work surfaces with a **damp cloth**. This is gentle on the skin (particularly if you have been doing a lot of work with FIMO) and removes dust and dirt, to prevent them from being transferred to the modelling clay.



The best way to store FIMO

If you have FIMO left over after crafting, it can be stored and **reused**. Oven-hardening FIMO must be stored in a **dust free** but **not airtight** environment. Storage should also protect against heat and sun. We recommend you store FIMO in a **cool, dry place** in **aluminium foil** or **plastic bags**, avoiding contact with polystyrene, PVC or styrofoam.



Creating accents with structured surfaces

Using **texture sheets (p. 61)** or **simple everyday objects** like a sponge, a lace doily or a leaf, great patterns can be created onto the modelled sheet. Just lay it on, press gently and carefully pull it off.

Marbling

By **twisting and kneading** different colours together, great marble effects can be created. The classic modern trend can be applied to FIMO models easily and create a very special look.



Mix colours

By **mixing FIMO colours together**, new and individual colours can be created. The FIMO blocks are divided into 8 portions, which makes the mixing of individual colours very easy.

Colour gradients

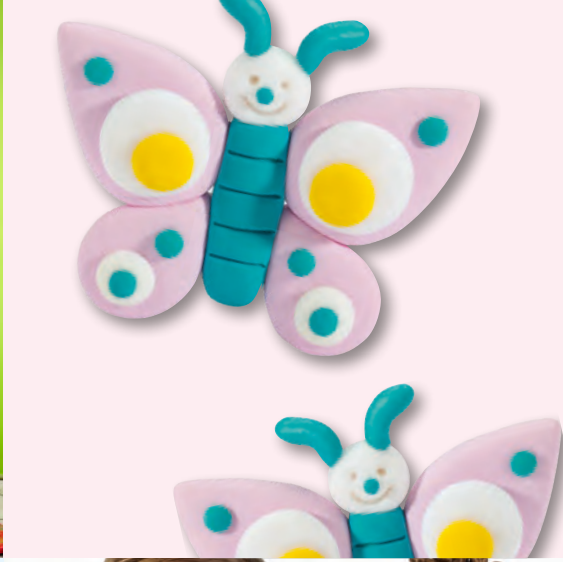
Colour gradients can also be made very easily by using different coloured FIMO clays. This effect gives the creations **depth and a special look**. Whether striking or subtle – the gradients can be designed individually.



Embellishing

With sheet gold or matt varnishes (p. 70) you can easily achieve stunning effects. Either before hardening your creation in the oven or after. Using **light and gloss effects** to create **shimmering accents** makes your FIMO creation an eye-catcher.

Find even more tips
under www.fimo.com





Create your own toys!



>> Door signs for children's rooms <<

I live here! A door sign tells you right away who a room belongs to. Even the letters in the name are made using FIMO and then transformed into a bright and colourful door sign using the new 'magic technique'. What's more, not only does this activity foster a child's creativity and motor skills, it helps them learn their ABC at the same time.



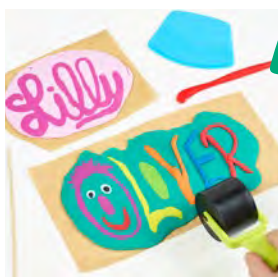
1. The piece of baking paper you use has to be large enough to work on. Knead together two or three packs of modelling clay as required. Use your hands to then roll the modelling clay to a big ball. To blend a new shade, knead different colours of modelling clay together.



2. Flatten the ball a little with your hand and then use the roller from the FIMO kids work&play set to roll it out to an approx. 2 - 3 mm thick sheet. Whilst rolling over the sheet, form it into an oval, round or other shape of your choice.



3. To make a letter out of FIMO kids modelling clay, use your hand to roll the desired colour to a thin long or short 'sausage'. Place the 'sausage' on the door sign, shape it into the letter required and press on lightly. To make a dot for i or j make another small ball of FIMO kids and press on.



4. Next, roll over the sign using the roller with light pressure. Go over the letters rolling from top to bottom or the other way round. As if by magic the letters and motifs merge with the sheet to form a smooth surface.



5. By rolling from top to bottom, you make the letters longer; rolling from side to side means they become wider. Finish off by going around the outside of the door sign using the cutting tool or flat-ended modelling stick to push or cut into shape. For hanging – drill / insert two holes into the upper area using the tip of the modelling tool.



6. Leaving the door sign on the baking paper, harden in the pre-heated oven for approx. 30 min at 110 °C. Let it cool, remove the baking paper and varnish the door sign. Leave to dry. Thread a piece of ribbon or cord through the hole(s). The FIMO kids door sign is now ready for hanging up!



MATERIALS

- FIMO kids colour pack "basic" 8032 01
- FIMO kids colour pack "girlie" 8032 02
- FIMO kids work&play tool set 8700 31
- FIMO accessories gloss varnish 8704 01 BK
- Baking paper and baking tray
- Ribbon or cord for hanging up
- Craft scissors and crafting glue
- Flat soft-hair paintbrush

Find the full tutorial here:

www.fimo.com

[@fimostaedtler](https://www.instagram.com/fimostaedtler)

level	crafting time	110 °C
easy	ca. 30 min	30 min

FIMO® KIDS – MODELLING AND PLAYTIME FUN



FIMO® kids
STANDARD BLOCK
 8030-..



42 g, 55 x 55 x 10 mm,
 segmented into 8 portions,
 min. order quantity: 8

Product information

- Oven-hardening modelling clay
- Designed specifically for children
- CE-conform
- Particularly soft shaping and hardening
- 24 vibrant colours
- Practical division into 8 portions for easy blending
- Easy to open
- Modelling fosters creativity, imagination and spatial perception and trains and develops fine motor skills
- Phased support via different levels of difficulty

Counter display (p. 8):

- 40 FIMO kids funny kits, 8 themes
- 96 blocks à 42 g (12 colours: white, yellow, orange, red, light pink, violet, blue, green, pale pink, brown, black, glitter gold)
- Incl. topper

Colour display (p. 8):

- Comprising 4 feed trays
- 1 compartment for presentation of brochures, finished samples or give-aways
- Intelligent, modular snap-in design
- 24 FIMO kids colours
- 384 blocks à 42 g
- Display topper with 14 language versions
- 1 colour label

0	white	[Barcode]
2	red	[Barcode]
5	green	[Barcode]
9	black	[Barcode]
43	pale pink	[Barcode]
80	light grey	[Barcode]
206	pearl light pink	[Barcode]
262	glitter pink	[Barcode]

052	glitter white	[Barcode]
3	blue	[Barcode]
6	violet	[Barcode]
25	light pink	[Barcode]
51	light green	[Barcode]
106	pearl yellow	[Barcode]
212	glitter red	[Barcode]
312	glitter blue	[Barcode]

1	yellow	[Barcode]
4	orange	[Barcode]
7	brown	[Barcode]
38	turquoise	[Barcode]
71	light brown	[Barcode]
112	glitter gold	[Barcode]
220	pink	[Barcode]
812	glitter silver	[Barcode]



FIMO® kids

COUNTER DISPLAY 8035 VS

Content: 96 blocks à 42 g, 12 colours,
40 FIMO kids funny kits, 1 topper,
dimensions: approx. w 295 x d 295 x h 575 mm,
min. order quantity: 1



*Customise me!
Find out more about our
customisable FIMO
displays from p. 80!*



FIMO® kids

COLOUR DISPLAY 8030 VS

Content: 384 blocks à 42 g,
24 colours, dimensions (with topper):
approx. w 400 x d 420 x h 560 mm,
min. order quantity: 1





FIMO® kids

COLOUR PACK 'BASIC'
8032 01

Content: 6 blocks à 42 g,
min. order quantity: 1



0	3
white	blue
1	5
yellow	green
2	9
red	black



FIMO® kids

COLOUR PACK 'GIRLIE'
8032 02

Content: 6 blocks à 42 g,
min. order quantity: 1



25	052
light pink	glitter white
220	112
pink	glitter gold
6	38
violet	turquoise



FORM&PLAY

Sets of varying levels of difficulty, each complete with 4 blocks of FIMO kids à 42 g, modelling stick, step-by-step instructions and background scene:



1. Knead



2. Harden

Create your own toys!



3. Play



Product information

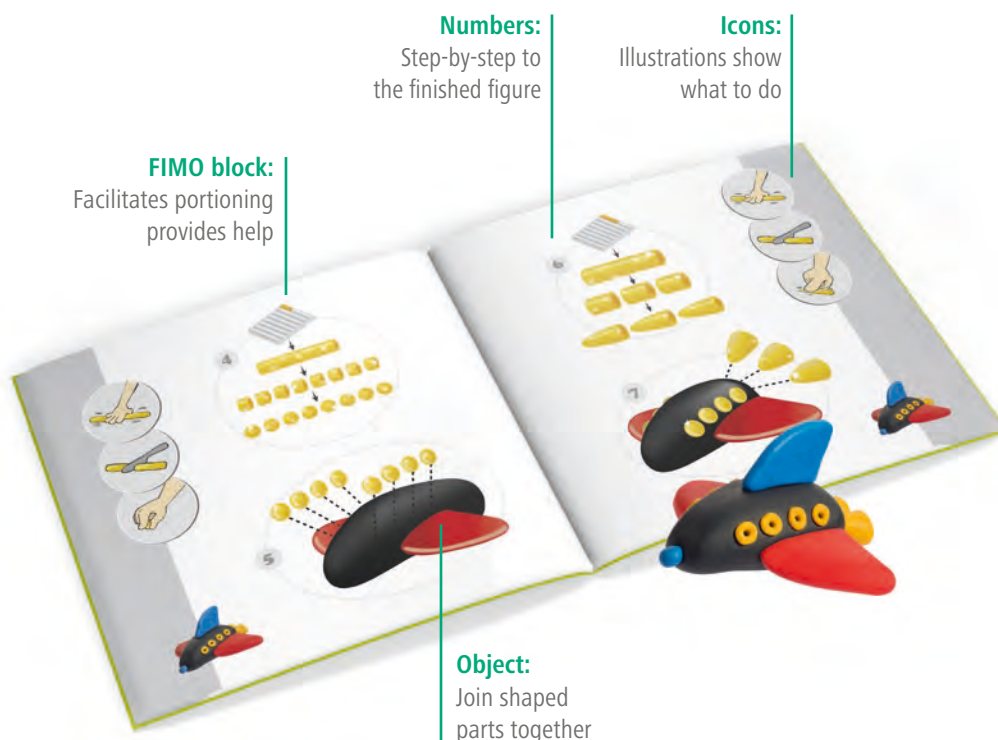
- Form&play – combination of modelling and playing
- Knead, harden, play
- Especially soft modelling clay
- Exciting projects with detailed step-by-step instructions
- Levels of difficulty (1 - 3) help users to find the right project according to their skills
- Decorative playing surface printed on the inside of the box multiplies the fun of playing
- Attractive, child-friendly instructions to keep and collect
- Fosters: fine motor skills, creativity, imagination and role playing
- Reclosable box
- Packaging: suitable for hanging or standing presentation

Content: 7 items!



Every instruction is set up equally.

THIS IS HOW THE INSTRUCTIONS WORK:



Numbers:
Step-by-step to the finished figure

Icons:
Illustrations show what to do

FIMO block:
Facilitates portioning provides help

Object:
Join shaped parts together



FIMO® kids

SET 'FARM' 8034 01 LZ

Content: 4 x 42 g blocks (white, pale pink, brown, black), modelling stick, background scene, step-by-step instructions, directions for use, min. order quantity: 1



FIMO® kids

SET 'PET' 8034 02 LZ

Content: 4 x 42 g blocks (white, orange, brown, black), modelling stick, background scene, step-by-step instructions, directions for use, min. order quantity: 1



FIMO® kids

SET 'BUTTERFLY' 8034 10 LZ

Content: 4 x 42 g blocks (yellow, light pink, turquoise, glitter white), modelling stick, background scene, step-by-step instructions, directions for use, min. order quantity: 1



FIMO® kids

SET 'MONSTER' 8034 11 LZ

Content: 4 x 42 g blocks (yellow, green, glitter white, glitter red), modelling stick, background scene, step-by-step instructions, directions for use, min. order quantity: 1





FIMO® kids

SET 'DINO' 8034 07 LZ

Content: 4 x 42 g blocks (yellow, orange, green, violet),
modelling stick, background scene, step-by-step
instructions, directions for use, min. order quantity: 1



FIMO® kids

SET 'PONY' 8034 08 LZ

Content: 4 x 42 g blocks (white, pink, turquoise, black),
modelling stick, background scene, step-by-step
instructions, directions for use, min. order quantity: 1



FIMO® kids

SET 'SEAWORLD' 8034 14 LZ

Content: 4 x 42 g blocks (yellow, red, turquoise, glitter silver),
modelling stick, background scene, step-by-step instructions,
directions for use, min. order quantity: 1



FIMO® kids

SET 'SAVANNAH' 8034 24 LZ

Content: 4 x 42 g blocks (light brown, brown, black, glitter white),
modelling stick, background scene, step-by-step instructions,
directions for use, min. order quantity: 1





FIMO® kids

SET 'POLAR'
8034 15 LZ

Content: 4 x 42 g blocks (glitter white, orange, light grey, black), modelling stick, background scene, step-by-step instructions, directions for use, min. order quantity: 1



FIMO® kids

SET 'CAT'
8034 16 LZ

Content: 4 x 42 g blocks (white, light brown, light grey, black), modelling stick, background scene, step-by-step instructions, directions for use, min. order quantity: 1



FIMO® kids

SET 'SNOW PRINCESS'
8034 18 LZ

Content: 4 x 42 g blocks (glitter white, pale pink, brown, glitter blue), modelling stick, background scene, step-by-step instructions, directions for use, min. order quantity: 1





FIMO® kids

SET 'UNICORN' 8034 19 LZ

Content: 4 x 42 g blocks (light pink, violet, pearl yellow, glitter pink), modelling stick, background scene, step-by-step instructions, directions for use, min. order quantity: 1



NEW!

New exciting sets with a decorative background scene, funny stickers and inspiring modell sheets!



FIMO® kids

SET 'HAPPY BEES' 8034 27 LZ

Content: 4 x 42 g blocks (yellow, pink, light green, brown), modelling stick, background scene, sticker, playing surface, step-by-step instructions, directions for use, min. order quantity: 1



FIMO® kids

SET 'POLICE RACE' 8034 29 LZ

Content: 4 x 42 g blocks (glitter silver, glitter blue, red, black), modelling stick, background scene, sticker, playing surface, step-by-step instructions, directions for use, min. order quantity: 1





FIMO® kids

SET 'PRINCESS'
8034 06 LZ

Content: 4 x 42 g blocks (light pink, pink, pale pink, glitter gold), modelling stick, background scene, step-by-step instructions, directions for use, min. order quantity: 1



FIMO® kids

SET 'MERMAID'
8034 12 LZ

Content: 4 x 42 g blocks (turquoise, pale pink, glitter silver, glitter pink), modelling stick, background scene, step-by-step instructions, directions for use, min. order quantity: 1



FIMO® kids

SET 'FAIRY'
8034 20 LZ

Content: 4 x 42 g blocks (pale pink, green, glitter gold, glitter pink), modelling stick, background scene, step-by-step instructions, directions for use, min. order quantity: 1



FIMO® kids

SET 'OUTBACK'
8034 23 LZ

Content: 4 x 42 g blocks (white, orange, black, glitter silver), modelling stick, background scene, step-by-step instructions, directions for use, min. order quantity: 1



CREATE&PLAY

In addition to fun and playing, the focus is on individual modelling. Instructions are designed to provide inspiration and stimulate the imagination.



Jewellery Set

- 4 blocks à 42 g
- 25 different beads
- Cord for necklace and bracelet
- Instructions on the inside of the box
- Modelling stick
- Short, concise instructions leave scope for own ideas and designs
- Quick results
- Reclosable box for storage



The perfect gift idea!



FIMO® kids

JEWELLERY SET 'HEARTS' 8033 01

Content: 4 blocks à 42 g (light pink, pink, violet, glitter white), 25 beads, 1 cord, step-by-step instructions, modelling stick, directions for use, min. order quantity: 1



FIMO® kids

JEWELLERY SET 'FLOWERS' 8033 02

Content: 4 blocks à 42 g (yellow, orange, red, glitter white), 25 beads, 1 cord, step-by-step instructions, modelling stick, directions for use, min. order quantity: 1



FUNNY KITS

Product information

- Designed especially for children
- Fast and easy to make
- Modelling fun with particularly soft modelling clay with high form stability
- Build funny objects with simple basic shapes
- Creating emotions with expressive faces
- Fosters: fine motor skills, creativity and imagination



FIMO® kids

SET 'FUNNY MICE' 8035 11

Content: 2 blocks à 42 g (glitter gold, light grey),
instructions, min. order quantity: 5



FIMO® kids

SET 'FUNNY BEETLES' 8035 12

Content: 2 blocks à 42 g (glitter red, black), instructions, min. order
quantity: 5



FIMO® kids

SET 'FUNNY CACTUS' 8035 13

Content: 2 blocks à 42 g (light green, brown), instructions, min. order
quantity: 5





FIMO® kids

SET 'FUNNY CATS'
8035 10

Content: 2 blocks à 42 g (light grey, black), instructions, min. order quantity: 5



FIMO® kids

SET 'FUNNY CARROTS'
8035 14

Content: 2 blocks à 42 g (light green, orange), instructions, min. order quantity: 5



FIMO® kids

SET 'FUNNY PEAS'
8035 15

Content: 2 blocks à 42 g (green, light green), instructions, min. order quantity: 5



FIMO® kids

SET 'FUNNY SAUSAGES'
8035 16

Content: 2 blocks à 42 g (yellow, light brown), instructions, min. order quantity: 5



FIMO® kids

SET 'FUNNY PAPER'
8035 17

Content: 2 blocks à 42 g (white, brown), instructions, min. order quantity: 5





TOOL BOX

The new FIMO kids tool box offers a perfect mixture between tools and modelling clay to create easy figures to play with, in front of the hand-coloured background.

Product information

- 10-piece tool box
- Tools appropriate for children
- Particularly soft modelling clay
- Paintable background scene on the inside of the carton sleeve
- Reclosable box for storage





FIMO® kids

TOOL BOX 'SEALIFE'
8039 01

Content: 4 blocks à 42 g (orange, blue, light green, white), 2 hinged sealife moulds, 1 motif roller wave/fish, modelling stick, instruction, min. order quantity: 1



FIMO® kids

TOOL BOX 'ALIEN'
8039 02

Content: 4 blocks à 42 g (orange, red, green, blue), 2 hinged alien moulds, 1 motif roller stars/flowers, modelling stick, instruction, min. order quantity: 1



FIMO® kids

TOOL BOX 'PONY'
8039 03

Content: 4 blocks à 42 g (white, black, turquoise, pink), playground, 1 motif roller horseshoe/wall, step-by-step instructions, modelling stick, instruction, min. order quantity: 1



WORK&PLAY



Product information

- Colourful range of tools
- Little helpers for big effects
- For working and modelling with FIMO kids clay
- Fosters: motor skills and creativity
- Shape and size designed specifically for children's hands
- Washable, easy to clean
- Perfect for combining with the form&play sets – ideal helpers for the creation of play worlds

Moulds:

- Plastic
- 6 different hinged moulds in each pack
- Easy to use

Motif rollers:

- 1 motif roller (handle) with 2 removable drums
- 6 different motifs

Tools:

- Different modelling and cutting tools (for rolling out, cutting, portioning, modelling)
- Roller can be used with the 8700 35 / 36 / 37 motif drums
- Child-friendly, no risk of injury



FIMO® kids

CUTTING TOOLS 8700 34

Content: 3 different cutting tools,
min. order quantity: 5



FIMO® kids

MOULDS 'ALIEN' 8741 01

Content: 6 hinged moulds (4 different aliens,
1 x planet, 1 x stars), motif size:
approx. 3.5 x 5 cm, mould size Ø 7.5 cm,
min. order quantity: 5



FIMO® kids

MOULDS 'SEALIFE' 8741 02

Content: 6 hinged moulds (2 different fish,
1 x octopus, 1 x shell, 1 x whale, 1 x starfish),
motif size: approx. 3.5 x 5 cm, mould size:
approx. Ø 7.5 cm, min. order quantity: 5





FIMO® kids

MOTIF ROLLER 'STAR/FLOWER' 8700 35

Content: 1 handle, 2 motif drums, motifs:
star and flower, drum size: 4 cm,
min. order quantity: 5



FIMO® kids

MOTIF ROLLER 'WAVE/FISH' 8700 36

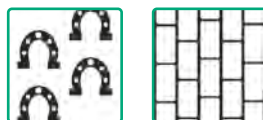
Content: 1 handle, 2 motif drums, motifs:
wave and fish, drum size: 4 cm,
min. order quantity: 5



FIMO® kids

MOTIF ROLLER 'HORSESHOE/WALL' 8700 37

Content: 1 handle, 2 motif drums, motifs:
horseshoe and wall, drum size: 4 cm,
min. order quantity: 5



FIMO® kids

TOOL SET 8700 31

Content: 2 modelling sticks, 1 cutting tool,
1 roller, min. order quantity: 5







MADE BY YOU ♥

>>Urban Jungle<<

Bring the jungle into your home!

Tropical monstera leaves are right on trend – these pretty marbled FIMO bowls will keep your desk tidy and are the perfect way to store all your bits and pieces. They also make great jewellery bowls to keep necklaces, rings, etc. in.



1.

To make a marbled bowl, shape one block of FIMO soft white into a cord and do the same with a block of FIMO soft emerald.



2.

Twist the two cords together and roll out into a longer cord. Now shape this cord into a ball.



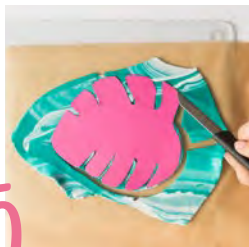
3.

Roll out the ball to form another cord. Repeat until you have created a lovely marbled pattern.



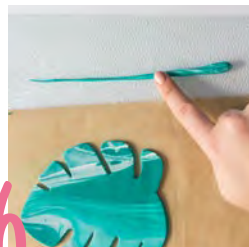
4.

Now use the acrylic roller to roll out the ball into a sheet approx. 0.5 cm thick. Tip: roll out the FIMO sheet directly onto baking paper – this will make it easier to remove later.



5.

Now print out the leaf template, cut it out, place on the FIMO sheet and cut round it with the knife.



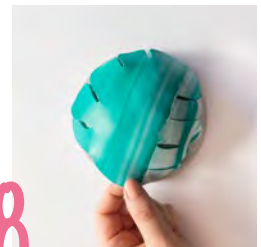
6.

Roll out a thin cord from the remaining marbled FIMO – this will form the large vein running down the middle of the monstera leaf. Place the vein in the middle of the leaf and press down slightly.



7.

Now use the modelling tool to score lots of smaller veins in your monstera leaf, going out from the vein in the middle.

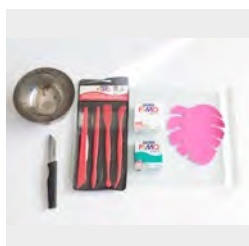


8.

Then remove the FIMO sheet from the baking paper and place it face down on an upturned ovenproof bowl. This will create a lovely curved shape as the leaf bowl hardens. Now harden your FIMO leaf bowl on the ovenproof bowl in the oven for 30 minutes at 110 °C and then leave to cool on the bowl. When everything has cooled off, simply remove your monstera and you're done!

MATERIALS

- 1 block FIMO soft "emerald" 8020-56
- 1 block FIMO soft "white" 8020-0
- Acrylic roller 8700 05
- Modelling tools 8711
- smooth working surface (glass or ceramic), cutting pattern, sharp knife, baking paper, ovenproof metal or ceramic bowl approx. Ø12 cm



level crafting time 110 °C



easy



ca. 20 min



30 min

Find the full tutorial here:



www.fimo.com



@fimostaedtler

FIMO® SOFT – FUN FOR CREATIVE USERS



FIMO® soft
STANDARD BLOCK
 8020-..



57 g, 55 x 55 x 15 mm,
 segmented into 8 portions,
 24 vibrant colours,
 min. order quantity: 6

Product information

- Oven-hardening modelling clay
- Perfect for beginners and hobby artists
- Soft and smooth
- 24 vibrant colours
- Practical division into 8 portions for easy blending
- Compatible with FIMO effect and FIMO professional

- Easy to open
- Infinitely versatile: for jewellery, accessories and home deco items
- Extensive range of blocks, sets and accessories

Colour display (p. 28):

- Comprising 4 feed trays
- 1 compartment for presentation of brochures, finished samples or give-aways
- Intelligent, modular snap-in design
- 24 FIMO soft colours
- 288 blocks à 57 g
- Display topper with 14 language versions
- 1 Colour label

0	white	[Barcode]
10	lemon	[Barcode]
24	indian red	[Barcode]
35	windsor blue	[Barcode]
42	tangerine	[Barcode]
53	tropical green	[Barcode]
62	lavender	[Barcode]
75	chocolate	[Barcode]

7	caramel	[Barcode]
16	sunflower	[Barcode]
26	cherry red	[Barcode]
37	pacific blue	[Barcode]
43	pale pink	[Barcode]
56	emerald	[Barcode]
63	plum	[Barcode]
76	cognac	[Barcode]

9	black	[Barcode]
22	raspberry	[Barcode]
33	brilliant blue	[Barcode]
39	peppermint	[Barcode]
50	apple green	[Barcode]
61	purple	[Barcode]
70	sahara	[Barcode]
80	dolphin grey	[Barcode]



Large block:
in 11 vibrant
colours!

FIMO® soft

**LARGE BLOCK
8021--**

454 g (1 lb), with portioning aid,
11 vibrant colours:
-0, -16, -2, -24, -26, -33,
-42, -43, -53, -75, -9,
min. order quantity: 1

 0 white		 2 christmas red	
 9 black		 16 sunflower	
 24 indian red		 26 cherry red	
 33 brilliant blue		 42 tangerine	
 43 pale pink		 53 tropical green	
 75 chocolate			



Customise me!
Find out more about our customisable
FIMO displays from p. 80!

FIMO® soft

**COLOUR DISPLAY
8020 VS**

Content: 288 blocks à 57 g, 24 colours, dimensions
(with topper): approx. w 400 x d 420 x h 560 mm,
min. order quantity: 1





FIMO® soft

COLOUR PACK 'BASIC COLOURS' 8023 C12-1

Content: 12 half blocks à 25 g (white, lemon, raspberry, indian red, brilliant blue, peppermint, tangerine, tropical green, plum, caramel, dolphin grey, black), instructions, min. order quantity: 1



FIMO® soft

COLOUR PACK 'BASIC COLOURS' 8023 C24-1

Content: 24 half blocks à 25 g (white, lemon, sunflower, tangerine, indian red, cherry red, raspberry, pale pink, purple, lavender, plum, windsor blue, brilliant blue, pacific blue, peppermint, emerald, tropical green, apple green, light flesh, sahara, caramel, chocolate, dolphin grey, black), instructions, min. order quantity: 1



FIMO® soft

COLOUR PACK 'BRILLIANT COLOURS' 8023 C12-2

Content: 12 half blocks à 25 g (white, lemon, indian red, pacific blue, peppermint, flamingo, tangerine, apple green, emerald, purple, lavender, taupe), instructions, min. order quantity: 1





FIMO® soft

COLOUR PACK 'PASTEL COLOURS'
8023 C12-3

Content: 12 half blocks à 25 g (white, pastel vanilla, antique rose, pastel rosé, pastel aqua, pastel peach, pale pink, pastel mint, pastel lilac, sahara, dolphin grey, taupe), instructions, min. order quantity: 1



FIMO® soft

COLOUR PACK 'NATURAL COLOURS'
8023 C12-4

Content: 12 half blocks à 25 g (white, sunflower, cherry red, windsor blue, tangerine, pale pink, green olive, saharah, chocolate, cognac, dolphin grey, black), instructions, min. order quantity: 1



FIMO® soft

COLOUR PACK 'FASHION COLOURS'
8023 C12-5

Content: 12 half blocks à 25 g (metallic mother-of-pearl, metallic gold, antique rose, metallic rosé gold, metallic copper, calypso blue, flamingo, green olive, royal violet, pearl light silver, taupe, pearl black), instructions, min. order quantity: 1



The ideal set for
beginners



FIMO® soft

BASIC SET 8023 10

Content: 9 half blocks à 25 g,
1 bottle of gloss varnish, modelling
stick, work sheet, instructions,
min. order quantity: 1



Ideal for art, leisure and hobby
as well as for educational
purposes, for example in schools and
similar organizations!



FIMO® soft

CLASS PACK 8023 50 LX

Content: 26 blocks à 57 g in 11 different colours, 10
modelling sticks, 4 rubber bands, directions for use
and modelling instructions,
min. order quantity: 4



CREATIVE KITS



Product information

- 5 Creative Kits complete with accessories and detailed step-by-step instruction
- Especially for beginners and hobby artists
- Soft and smooth modelling clay, oven-hardening
- Extremely easy to create lovely, unique items
- Ideal as a gift
- Infinitely versatile: For jewellery, accessories and home deco items
- Reclosable acrylic case



FIMO® soft

CREATIVE KIT 'UNICORN LILLY' 8025 30

Content: 4 half blocks à 25 g (white, lemon, indian red, peppermint), 1 wood stick, 1 plastic ground, 1 modelling stick, 1 work sheet, 1 modelling instruction, min. order quantity: 1



FIMO® soft

CREATIVE KIT 'LLAMA PEDRO' 8025 31

Content: 4 half blocks à 25 g (sunflower, raspberry, peppermint, sahara), 1 wood stick, 1 plastic ground, 1 modelling stick, 1 work sheet, 1 modelling instruction, min. order quantity: 1





FIMO® soft

CREATIVE KIT 'SLOTH FLAPY'
8025 32

Content: 4 half blocks à 25 g (tropical green, sahara, caramel, chocolate), 1 wood stick, 1 plastic ground, 1 modelling stick, 1 work sheet, 1 modelling instruction, min. order quantity: 1



FIMO® soft

CREATIVE KIT 'KAWAII SUSHIS'
8025 33

Content: 4 half blocks à 25 g (white, sunflower, tangerine, black), 1 transfer paper, 1 modelling stick, 1 work sheet, 1 modelling instruction, min. order quantity: 1



FIMO® soft

CREATIVE KIT 'KAWAII DONUT'
8025 34

Content: 4 half blocks à 25 g (white, antique rose, vanilla, mint), 1 transfer paper, 1 modelling stick, 1 work sheet, 1 modelling instruction, min. order quantity: 1



FIMO® EFFECT – EXQUISITE EXTENSION TO THE RANGE

Product information

- Oven-hardening modelling clay
- Effective addition to FIMO soft, FIMO leather-effect and FIMO professional
- Right degree of hardness for the respective effect
- 42 colours, 9 different effects (neon black light, nightglow, glitter, translucent, stone, metallic, pastel, gemstone, pearl)
- Practical division into 8 portions for easy blending
- Easy to open
- Infinitely versatile: for jewellery, accessories and home deco items

Colour display (p. 36):

- Comprising 4 feed trays
- 1 compartment for presentation of brochures, finished samples or giveaways
- Intelligent, modular snap-in design
- 24 effective colours
- 288 blocks à 57 g
- Display topper with 14 language versions
- 1 Colour label

Neon display (p. 36):

- 6 colours (neon yellow, neon orange, neon pink, neon purple, neon blue, neon green)
- 72 blocks à 57 g

- Display topper with 14 language versions
- 1 Colour label

Gemstone colour display (p. 37):

- 6 colours (citrine, rose quartz, ruby quartz, ice crystal, blue agate, jade)
- 72 blocks à 57 g
- Display topper with 14 language versions
- 1 Colour label

Pastel colour display (p. 37):

- 6 colours (vanilla, rosé, aqua, peach, mint, lilac)
- 72 blocks à 57 g
- Display topper with 14 language versions
- 1 Colour label

Similar hardness to FIMO professional



TRANSLUCENT

Colours for translucent objects



PEARL

Colours with a sophisticated pearly lustre



METALLIC

Colours with exquisite metallic effects thanks to miniature particles



GEMSTONE

Gemstone colours with fascinating dual effect – transparent and pearl

Similar hardness to FIMO soft



NIGHTGLOW

Fluorescent, highly luminous colour



GLITTER

Various colours for items in glitter look



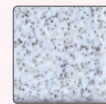
NEON (p. 36)

Luminous neon colours with a particularly bright black light effect



PASTEL

Subtle pastel shades for delicately coloured creations



STONE

Colours for an extraordinary stone appearance



The perfect addition to FIMO soft, FIMO professional and FIMO leather-effect!



FIMO® effect

**STANDARD BLOCK
8020-..**

57 g, 55 x 55 x 15 mm,
segmented into 8 portions,
36 colours, min. order quantity: 6



GLITTER COLOURS

	052 white		112 gold		202 red
	302 blue		602 purple		812 silver

TRANSLUCENT COLOURS

	014 translucent		104 yellow		204 red
	374 blue		504 green		604 purple

PASTEL COLOURS

	105 vanilla		205 rosé		305 aqua
	405 peach		505 mint		605 lilac

GEMSTONE COLOURS

	106 citrine quartz		206 rose quartz		286 ruby quartz
	306 blue ice quartz		386 agate blue		506 jade

METALLIC COLOURS

	08 mother-of-pearl		11 gold		27 copper
	28 ruby red		81 silver		

PEARL COLOURS

	207 rosé gold		607 lilac
	817 light silver		907 black

STONE COLOURS

	803 granite		903 stardust
--	----------------	--	-----------------

NIGHTGLOW COLOUR

	04 nightglow
--	-----------------

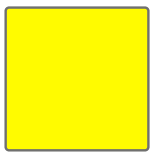


FIMO® effect

**STANDARD BLOCK
8010-..**



57 g, 55 x 55 x 15 mm,
practical division into 8 portions,
6 colours, min. order quantity: 1



8010-101
neon yellow



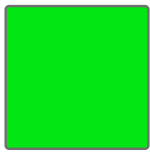
8010-201
neon fuchsia



8010-301
neon blue



8010-401
neon orange



8010-501
neon green



8010-601
neon purple

Black light effect!

FIMO® effect

**DISPLAY NEON COLOURS
8010 03 VS**

Content: 72 blocks à 57 g,
6 neon colours (neon yellow,
orange, fuchsia, purple, blue, green),
dimensions (with top):
w 400 x d 265 x h 300 mm,
min. order quantity: 1





Customise me!
Find out more about our customisable
FIMO displays from p. 80!

FIMO® effect

**COLOUR DISPLAY
8010 VS**

Content: 288 blocks à 57 g,
24 colours (glitter colours, translucent colours,
metallic colours, pearl colours, stone colours,
night colour), dimensions (with topper):
approx. w 400 x d 420 x h 560 mm,
min. order quantity: 1



FIMO® effect

**DISPLAY GEMSTONE COLOURS
8010 01 VS**

Content: 72 blocks à 57 g, 6 gemstone colours
(citrine quartz, rose quartz, ruby quartz, blue ice
quartz, agate blue, jade), dimensions (with topper):
approx. w 400 x d 265 x h 300 mm,
min. order quantity: 1



Combinable with 8010 VS,
more information from p. 94



FIMO® effect

**DISPLAY PASTEL COLOURS
8020 01 VS**

Content: 72 blocks à 57 g, 6 pastel colours
(vanilla, rosé, aqua, peach, mint, lilac),
dimensions (with topper):
approx. w 400 x d 265 x h 300 mm,
min. order quantity: 1



COLOUR PACKS



FIMO® effect

COLOUR PACK 8013 C12-1

Content: 12 half blocks à 25 g (nightglow, translucent, glitter white, translucent yellow, glitter gold, translucent red, glitter blue, translucent green, translucent purple, stone granite, glitter silver, stone stardust), instructions, min. oder quantity: 1



FIMO® effect

COLOUR PACK 8013 C24-1

Content: 24 half blocks à 25 g (nightglow, gemstone blue ice quartz, translucent, translucent blue, glitter white, translucent green, metallic mother-of-pearl, gemstone jade, translucent yellow, glitter purple, metallic gold, translucent purple, glitter red, pearl lilac, translucent red, stone granite, metallic copper, metallic silver, gemstone rose quartz, glitter silver, pearl rosé gold, stone stardust, glitter blue, pearl black), instructions, min. oder quantity: 1



FIMO® LIQUID



Product information

- Oven-hardening liquid gel
- Especially for beginners, hobby artists and professionals
- Thick, fluid consistency
- 4 different colours:
 - **Translucent** – especially clear and translucent
 - **Metallic gold** and **silver** – with shimmering pearlescent effect
 - **Black** – well covering colour brilliance
- Extremely flexible after hardening
- Practical dosage tip for pinpoint application and clean handling
- Ideal complement for FIMO modelling clay: compatible with FIMO soft, FIMO effect, FIMO leather-effect and FIMO professional

- Can be used in bakeable silicone moulds
- Resealable plastic bottle
- To embellish FIMO clays as well as a bond of hardened with non-hardened FIMO items
- Ideal for contouring and grouting techniques
- Image transfer from prints, graphite and pencil drawings
- Glaze effects: pure or dyed with FIMO modelling clay
- Mixing techniques: e.g. marbling and colour gradients
- Detailed instruction can be scanned via QR code



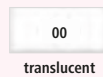
Glaze effect with modelling clay



FIMO® liquid

LIQUID GEL, 50 ml 8050-..

Content: Plastic bottle with dosage nozzle, hangable, Reclosable, min. order quantity: 6



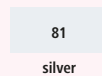
00
translucent



9
black



11
gold



81
silver



Translucent (50 ml, 200 ml) with new packing!



Image transfer

FIMO® liquid

LIQUID GEL, 200 ml 8051-00

Content: Plastic bottle with dosage nozzle, Reclosable, 6 bottles in a shelf ready packaging-carton, min. order quantity: 6



Available in a shelf-ready display!

FIMO® LEATHER-EFFECT

The perfect product to realise new and innovative ideas:
After hardening, the surface and haptic is similar to leather.
Create your dream leather projects with 12 trendy colours.

Looks like leather, feels like leather – but it is FIMO leather-effect!

Product information

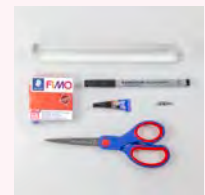
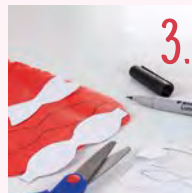
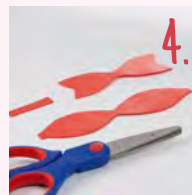
- Innovative oven-hardening modelling clay
- Makes extraordinary creative ideas and modelling techniques possible
- 12 attractive colours
- Effective addition to FIMO soft, FIMO effect and FIMO professional
- Soft and smooth clay
- Practical division into 8 portions for easy blending
- Easy to open
- After hardening the surface and haptic is similar to leather
- Thin surfaces are cuttable, punchable and sewable
- Infinitely versatile: for jewellery, accessories and home deco items

The real deal: form, cut, bend, sew and texturize however you want to!



>> Bow pin <<

This cute accessory will dress up any hairstyle!



MATERIALS

- 1 block FIMO leather-effect "watermelon" 8010-249
- Acrylic roller 8700 05
- Lumocolor non-permanent marker 311-9 S
- Template (download online)
- Super glue like Pattex ULTRA GEL
- Scissors, pin

level	crafting time	130 °C
easy	ca. 20 min	30 min

Find the full tutorial here:

www.fimo.com [@fimostaedtler](https://www.instagram.com/fimostaedtler)



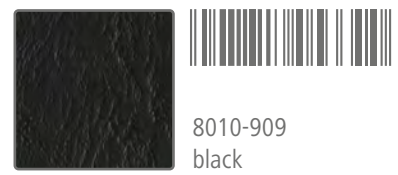
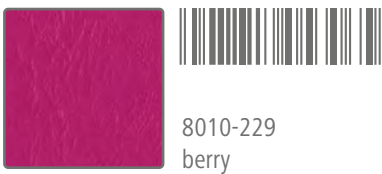
FIMO® leather-effect

**STANDARD BLOCK
8010-..**

57 g, 55 x 55 x 15 mm,
segmented into 8 portions,
12 vibrant colours,
min. order quantity: 6



Limitless ideas:
combine and mix all colours!



FIMO® leather-effect

**COLOUR PACK
8013 C12-2**

Content: 12 half blocks à 25 g
(ivory, saffron yellow, ochre, berry, watermelon,
indigo, lagoon, olive, rust, nut, dove grey, black), instructions,
min. order quantity: 1



DIY SETS

Product information

- 4 DIY kits including easy step-by-step instructions and accessories
- Innovative oven-hardening modelling clay: after hardening, the surface and haptic is similar to leather
- Kits suitable for beginners and hobby creatives
- Unlimited possibilities: For jewellery making, accessories and home deco



FIMO® leather-effect

DIY KIT 'JEWELLERY' 8015 DIY1

Content: 4 half blocks à 25 g (ivory, nut, lagoon, black),
2 x earrings, necklace, 10 splitrings, instructions,
min. order quantity: 1



FIMO® leather-effect

DIY KIT 'TASSEL' 8015 DIY2

Content: 4 half blocks à 25 g (saffron yellow, indigo, berry, black),
1 black elastic band (70 cm), 10 split rings, instructions,
min. order quantity: 1



FIMO® leather-effect

DIY KIT 'PLANT HANGERS' 8015 DIY3

Content: 4 half blocks à 25 g (2 x ivory, 2 x rust),
1 string (10 m), instructions,
min. order quantity: 1



FIMO® leather-effect

DIY KIT 'GLASSES CASE' 8015 DIY4

Content: 4 half blocks à 25 g (2 x lagoon, 2 x black),
1 black elastic band (70 cm), instructions,
min. order quantity: 1



FIMO® leather-effect

**DISPLAY
8010 02 VS**

Content: 144 blocks à 57 g, 12 colours,
dimensions (with topper): approx.
w 400 x d 320 x h 395 mm
min. order quantity: 1



Customise me!
Find out more about our
customisable FIMO displays
from p. 94!



FIMO® leather-effect

**COUNTER DISPLAY
8010 CA72**

Includes hardened FIMO leather-effect sample for demonstrating the unique
FIMO leather-effect characteristics.
Measurements incl. header: 280 x 200 x 545 mm. Distribution: filled.
Content: 72 blocks à 57 g, 12 assorted colours, min. order quantity: 1



FIMO® leather-effect

**COUNTER DISPLAY DIY-SETS
8015 DIYVS**

72 blocks à 57 g, 12 colours, 20 FIMO leather-effect
DIY kits, 1 background graphic, 2 oven-hardened
FIMO leather-effect samples "tassels",
measurements: approx. 295 x 295 x 575 mm,
min. order quantity: 1



FIMO® leather-effect

**DISPLAY
LR80CABASE**

Base for counter display FIMO leather-effect (8010 CA72),
measurements of the display incl. counter display and header: approx.
280 x 200 x 1355 mm, min. order quantity: 1

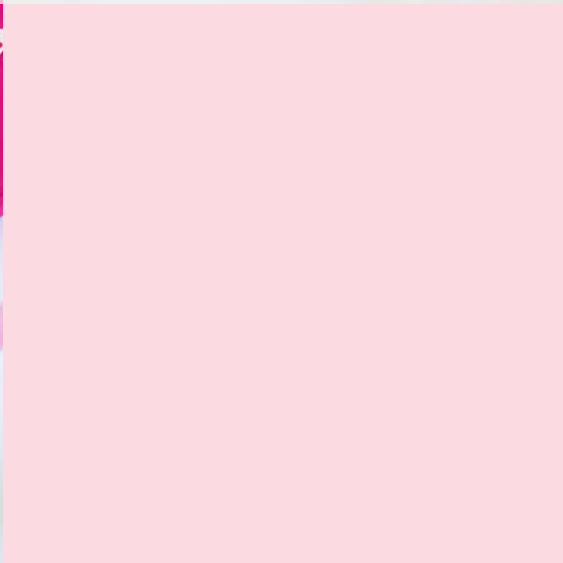


Additional material, order separately:
FIMO leather-effect flyer 0V080M3600



FIMO

M A D E b y
Y O U ♥



MADE BY YOU ♥

Young. Fresh. Bursting with colours.

Spark your customer's creativity with our FIMO MADE BY YOU ♥ sets and tutorials. Influencers from the creative scene guide through charming FIMO DIY projects. Easy to follow and for everybody to recreate: from stunning home deco to eye-catching jewellery and beautiful seasonal projects.

On request we offer video tutorials, images and texts on creative FIMO projects:



Get more inspiration on our website www.fimo.com or check out our social media channels and dive into a world full of creativity!



FIMO®

M A D E b y
Y O U ♥

Upgrade your POS with the FIMO MADE BY YOU ♥ Lookbook.
It includes trendy DIY tutorials as well as an overview
of the FIMO product range.



NEW: includes
cutting patterns to follow along easily
and craft the projects yourself!

art. no. 0V080N6000



Check out our unique
FIMO MADE BY YOU ♥
LOOKBOOKS!

art. no. 0V080L19
(English, French, Spanish)



Or display the FIMO MADE BY YOU ♥
tear-off pads, containing one tutorial on each side.

A pop of colour:
MADE BY YOU ♥
tutorials to-go!



back page

art. no. 0G080L0,
front page

Also available for
FIMO leather-effect! ↘



art. no. 0G080P0,
back page

front page



art. no. 0G080Q0,
back page

front page



art. no. 0G080M0,
back page

front page



art. no. 0G080N0,
back page

front page



FIMO® Made by you

COUNTER DISPLAY DIY SETS 8025 DIYVS

72 FIMO soft / effect blocks à 52 g, 12 colours,
20 FIMO Topic sets, 1 background scene dimensions:
approx. w 295 x d 295 x h 575 mm,
min. order quantity: 1



FIMO® Made by you

POWERTOWER WITH FIMO COVER LR PTFIMO

Measurements: 500 x 385 x 1750 mm,
shipped: 2-part, incl. two panels with FIMO graphics,
min. order quantity: 1

Additional material, order separately:
Advertising brochure "Lookbook FIMO"
(DE OV080L3005; EN/FR/ES OV080L19)
with dispenser to attach to display (LR DISPENS)





FIMO® Made by you

DIY KIT 'PHOTO CLIP HOLDER' 8025 DIY1

Content: 4 half blocks à 25 g (2 x emerald, pastel mint, raspberry),
3 x photo clip holders, instructions,
min. order quantity: 5



FIMO® Made by you

DIY KIT 'EARRING' 8025 DIY2

Content: 4 half blocks à 25 g (raspberry, peppermint, brilliant blue,
tangerine), 2 x earring work pieces, 10 x jump rings (Ø 10 mm),
3 round cutters (Ø 15 mm, 20 mm, 30 mm),
instructions, min. order quantity: 5



FIMO® Made by you

DIY KIT 'KEYCHAIN' 8025 DIY3

Content: 4 half blocks à 25 g (white, sunflower, raspberry,
peppermint), 4 x key chains, instructions,
min. order quantity: 5



FIMO® Made by you

DIY KIT 'NECKLACE' 8025 DIY4

Content: 4 half blocks à 25 g (white, pastel vanilla, pastel rosé,
pastel aqua), 2 x necklaces, 2 x eye pins, instructions,
min. order quantity: 5



FANTASY GLOBES

Product information

Snow globes:

- Transparent top with base and plug
- For customisable creativity
- Suitable to use with all kinds of oven-hardening FIMO
- Detailed instructions
- For collecting and giving away

Water clarifying agent:

- Glass bottle à 10 ml
- Prevents water from clouding

Snow:

- Glass bottle à 4 g

Tip for long-lasting, untarnished delight:
pour FIMO snow into distilled water and add a
drop of washing-up liquid. FIMO water
clarifying agent prevents clouding!





FIMO®

SNOW GLOBE, OVAL
8629 40

Content: Transparent top with base,
dimensions: approx. 70 x 52 mm,
min. order quantity: 1



FIMO®

SNOW GLOBE, ROUND
8629 42

Content: Transparent top with base,
dimensions: approx. 86 x 75 mm,
min. order quantity: 1



FIMO®

WATER CLARIFYING AGENT
8603 BK

Content: Glass bottle à 10 ml,
min. order quantity: 5



FIMO®

SNOW
8613 BK

Content: Glass bottle à 4 g,
min. order quantity: 5



Beautiful jewellery

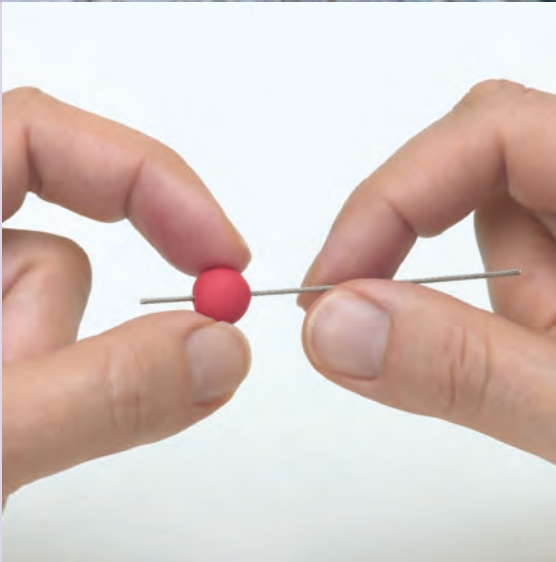
Product information

Bead roller:

- Bead roller for bicone, olive and ball beads
- Incl. detailed leaflet

Bead piercing needles:

- 50 bead piercing needles in 2 thicknesses (Ø 0.8 mm and Ø 1.7 mm)
- In reclosable plastic tube
- For distortion-free piercing of modelled objects and beads





FIMO®

**BEAD ROLLER
8712**



Content: 1 bead roller (bicone, olive and ball beads),
instructions, min. order quantity: 3



bicone:
11 x 11 mm



olive:
8 x 16 mm



ball:
Ø 11 mm



FIMO®

**BEAD PIERCING NEEDLES
8712 20**



Content: 50 bead piercing
needles, min. order quantity: 1

CREATIVE ACCESSORIES

Product information

- Tools and appliances designed specifically for the use with FIMO
- Multiplies the possibilities for the perfect finish
- Safe handling, accurate results

Oven thermometer:

- With red silicone cover – heat protection for hands
- Easy-to-read dial
- Hook for hanging in oven
- Range 0 - 300 °C, temperature tolerance +/- 2 %

Shaped cutters:

- 6 different metal mini shaped cutters

Grind'n polish set:

- Sanding sponges for dry and wet sanding and smoothing of hardened FIMO surfaces
- 3 different grades (fine, superfine, microfine)
- For round and curved surfaces
- Easy to wash out, reusable

Modelling tools:

- 3 different sets with 4 different plastic modelling sticks

Acrylic roller (p. 54):

- For evenly rolling out FIMO
- For a particularly smooth surface

Blade sets (p. 54):

- High-quality blades for clean-cut edges
- Precise cutting results
- Made of stainless steel
- Rubber grip for preventing injury

Clay machine (p. 54):

- Roller with hand crank
- Designed especially for the rolling out of oven-hardening modelling clays (FIMO professional, FIMO soft, FIMO effect, FIMO leather-effect)
- 9 different thickness settings (approx. 0.35 mm to approx. 3 mm)
- Extra wide rollers (for a sheet width of 175 mm)
- Clamp (for securing to table)





FIMO®
OVEN THERMOMETER
 8700 22

Content: Oven thermometer with silicone heat guard, min. order quantity: 1



FIMO®
SHAPED CUTTERS
 8724 03

Content: 6 shaped cutters, size: Ø 2 cm, min. order quantity: 5



FIMO®
GRIND 'N POLISH SET
 8700 08

Content: 3 sanding sponges, min. order quantity: 5



FIMO®
MODELLING TOOLS
 8711

Content: 4 modelling sticks, min. order quantity: 10



FIMO®
MODELLING TOOLS
 8711 WP4-1

Content: 4 modelling sticks, min. order quantity: 10



FIMO®
MODELLING TOOLS
 8711 WP4-2

Content: 4 modelling sticks, min. order quantity: 10





FIMO®
ACRYLIC ROLLER
8700 05

Content: 1 acrylic roller,
 dimensions: Ø 25 mm, 20 cm long,
 min. order quantity: 1



FIMO®
MIXED BLADE SET,
3 PIECES
8700 04

Content: 1 rigid, 1 flexible and
 1 serrated blade, 2 rubber grips,
 min. order quantity: 1



FIMO®
CLAY MACHINE
8713

Content: 1 roller with hand-
 crank handle and clamp,
 min. order quantity: 1



Tips for usage at
[www.fimo.com!](http://www.fimo.com)



TEXTURE SHEETS

Product information

- Surface designs for extravagant effects
- Dimensions: approx. 150 x 168 mm motif area
- Place, press, remove – finished!
- 8 different textures available
- Clear contours and accurate results
- Transparent material ideal for accurate positioning
- Flexible and hard-wearing
- For flat and curved objects
- Suitable for frottage technique using karat oil pastels
- Long service life

Flexible and durable



Transparent material





FIMO®

TEXTURE SHEET 'WOOD'
8744 10

Content: 1 texture sheet,
min. order quantity: 1



FIMO®

TEXTURE SHEET 'ORIENTAL'
8744 11

Content: 1 texture sheet,
min. order quantity: 1



FIMO®

TEXTURE SHEET 'MEADOW'
8744 12

Content: 1 texture sheet,
min. order quantity: 1



FIMO®

TEXTURE SHEET 'LEATHER'
8744 13

Content: 1 texture sheet,
min. order quantity: 1





FIMO®

TEXTURE SHEET 'BAROQUE'
8744 14

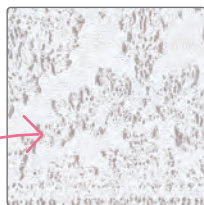
Content: 1 texture sheet,
min. order quantity: 1



FIMO®

TEXTURE SHEET 'ART NOUVEAU'
8744 15

Content: 1 texture sheet,
min. order quantity: 1



FIMO®

TEXTURE SHEET 'LACE TRIM'
8744 16

Content: 1 texture sheet,
min. order quantity: 1



FIMO®

TEXTURE SHEET 'DECORATIVE TRIM'
8744 17

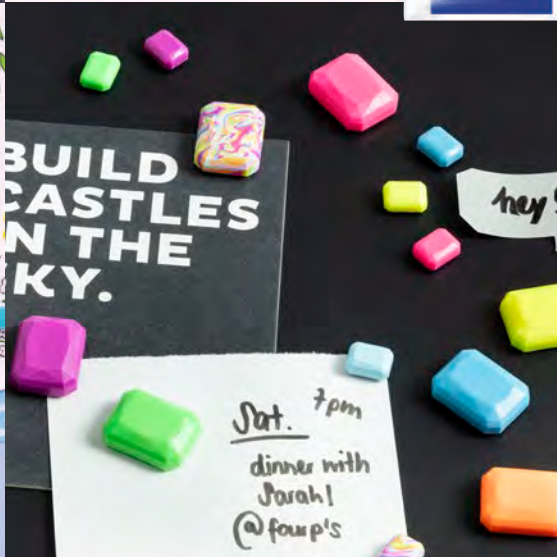
Content: 1 texture sheet,
min. order quantity: 1



SILICONE PUSH MOULDS

Product information

- Made from heat-resistant silicone
- Precise, easy demoulding
- Very flexible
- Hard-wearing material
- Can be cured in the oven (max. 130 °C)
- Long service life
- Easy to clean
- Ideal for fashion accessories, greeting cards, invitations, scrapbooking, collages, table decorations, jewellery, home decorations, etc.
- Dimension: Ø 7 cm





FIMO®

SILICONE PUSH MOULD 'STARS' 8725 20

Content: 1-piece mould with 6 diff. motifs,
Size of motif: motif 1: 7 x 5 mm,
motif 2: 14 x 14 mm, motif 3: 14 x 10 mm,
motif 4: 23 x 16 mm, motif 5: 26 x 26 mm,
motif 6: 31 x 28 mm,
min. order quantity: 1



FIMO®

SILICONE PUSH MOULD 'FEATHERS' 8725 21

Content: 1-piece mould with 5 diff. motifs,
Size of motif: motif 1: 18 x 20 mm,
motif 2: 10 x 35 mm, motif 3: 10 x 35 mm,
motif 4: 10 x 40 mm, motif 5: 15 x 45 mm,
min. order quantity: 1



FIMO®

SILICONE PUSH MOULD 'FLOWERS' 8725 22

Content: 1-piece mould with 5 diff. motifs,
Size of motif: motif 1: 19 x 21 mm,
motif 2: 21 x 22 mm, motif 3: 20 x 23 mm,
motif 4: 16 x 21 mm, motif 5: 20 x 20 mm
min. order quantity: 1



FIMO®

SILICONE PUSH MOULD 'HEARTS' 8725 23

Content: 1-piece mould with 5 diff. motifs,
Size of motif: motif 1: 10 x 15 mm,
motif 2: 11 x 19 mm, motif 3: 20 x 25 mm,
motif 4: 22 x 30 mm, motif 5: 25 x 30 mm,
min. order quantity: 1





FIMO®
**SILICONE PUSH MOULD
'BOWS'**
8725 24

Content: 1-piece mould with 5 diff. motifs,
Size of motif: Motif 1: 3 x 15 mm,
motif 2: 15 x 21 mm, motif 3: 19 x 25 mm,
motif 4: 16 x 27 mm, motif 5: 26 x 28 mm,
min. order quantity: 1



FIMO®
**SILICONE PUSH MOULD
'CAMEO'**
8725 25

Content: 1-piece mould with 3 diff. motifs,
Size of motif: Motif 1: 18 x 22 mm,
motif 2: 38 x 38 mm, motif 3: 27 x 45 mm,
min. order quantity: 1



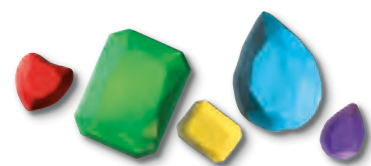
FIMO®
**SILICONE PUSH MOULD
'BUTTONS'**
8725 26

Content: 1-piece mould with 3 diff. motifs,
Size of motif: Motif 1: 15 x 15 mm,
motif 2: 26 x 26 mm, motif 3: 32 x 32 mm,
min. order quantity: 1



FIMO®
**SILICONE PUSH MOULD
'GEMS'**
8725 27

Content: 1-piece mould with 5 diff. motifs,
Size of motif: Motif 1: 13 x 10 mm,
motif 2: 11 x 13 mm, motif 3: 15 x 13 mm,
motif 4: 20 x 28 mm, motif 5: 28 x 21 mm,
min. order quantity: 1

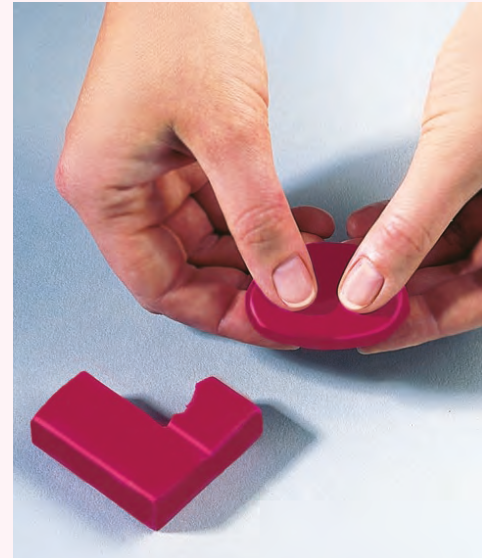


Clay moulds

Product information

- Complex motifs for detailed painting and decorating with leaf metal
- Easy to demould
- 12 different themes
- For Christmas ornaments, enchanting table decorations, magnets or home deco items
- Suitable for use with FIMO professional, FIMO soft, FIMO effect, FIMOair basic and FIMOair light
- Extremely long service life
- Frost and heat-resistant from -15 °C to + 80 °C
- Foodstuff compatible
- With detailed instructions and lots of tips

Suitable for concrete casting!





FIMO®

**CLAY MOULD
'FARM ANIMALS'
8742 01**

Content: 9 motifs, approx.
5 x 4 cm, min. order quantity: 1



FIMO®

**CLAY MOULD
'SEA CREATURES'
8742 02**

Content: 8 motifs, approx.
6 x 4 cm, min. order quantity: 1



FIMO®

**CLAY MOULD
'LITTLE BEARS'
8742 03**

Content: 8 motifs, approx.
6 x 3 cm, min. order quantity: 1



FIMO®

**CLAY MOULD
'SEA SHELLS'
8742 08**

Content: 6 motifs, approx.
6 x 6 cm, min. order quantity: 1



FIMO®

**CLAY MOULD
'FUNNY ANIMALS'
8742 09**

Content: 10 motifs, approx.
6 x 4 cm, min. order quantity: 1



FIMO®

**CLAY MOULD
'MERRY CHRISTMAS'
8742 12**

Content: 9 motifs, approx.
6 x 4 cm, min. order quantity: 1





FIMO®

CLAY MOULD 'BUTTERFLIES' 8742 21

Content: 9 motifs, approx.
9 x 4 cm, min. order quantity: 1



FIMO®

CLAY MOULD 'HEARTS' 8742 26

Content: 9 motifs, approx.
5 x 6 cm, min. order quantity: 1



FIMO®

CLAY MOULD 'YOUNG ANGELS' 8742 27

Content: 7 motifs, approx.
6 x 6 cm, min. order quantity: 1



FIMO®

CLAY MOULD 'CHRISTMAS DECO' 8742 35

Content: 6 motifs, approx.
7 x 7 cm, min. order quantity: 1



FIMO®

CLAY MOULD 'ROSES' 8742 36

Content: 7 motifs, approx.
7 x 7 cm, min. order quantity: 1



FIMO®

CLAY MOULD 'SPRING' 8742 52

Content: 7 motifs, approx.
6 x 7 cm, min. order quantity: 1



IMPRESSIVE FINISHES

Suitable for FIMO® and FIMOair®!

Product information

- Impressive finishes for modelled objects

Leaf metal:

- For a variety of creative ideas
- Adheres to many different surfaces
- Easy-to-understand technique
- 10 sheets à 14 x 14 cm
- With corresponding size and surface varnishes

Varnishes:

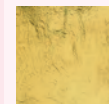
- Good adhesion and scratch-resistance properties
- For surface protection
- Milky consistency, transparent when dry
- Lightfast
- Water-based
- Gloss: for brilliant, high-gloss finishes
- Semi-gloss: for shimmering, semi-gloss finishes



FIMO®

LEAF METAL 8781-..

Content: 10 sheets in cardboard pack, dimensions: 14 x 14 cm, min. order quantity: 5



11 gold



26 copper



81 silver





FIMO®

**SIZE FOR LEAF METAL
8782 BK**

Content: Jar à 35 ml,
min. order quantity: 5



FIMO®

**GLOSS VARNISH
8703 01 BK**

Content: Bottle à 10 ml,
brush in cap,
min. order quantity: 5



FIMO®

**GLOSS VARNISH
8704 01 BK**

Content: Jar à 35 ml,
min. order quantity: 5



FIMO®

**SEMI-GLOSS VARNISH
8705 01 BK**

Content: Jar à 35 ml,
min. order quantity: 5



FIMO® kids

FIMO® soft | effect | leather-effect

FIMO® professional | professional doll art

FIMOair®

Noris® Modelling dough & Modelling clay





The art of expression.

>>Necklace made of FIMO and leaf metal<<



Small beads that impress by combining fresh, trendy colours and exquisite leaf gold metal. The larger beads are even more stunning: not only do they wow with colourful surface patterns – you can even see the leaf gold metals sparkling through from the inside.

Find the full tutorial here:

 www.fimo.com  [@fimostaedtler](https://www.instagram.com/fimostaedtler)



1. Cut half a block of each the violet and the turquoise FIMO professional into four strips. Then divide these into four small, three medium-sized and three large pieces, as pictured. Roll these into balls. Flatten the smallest four balls of each colour.



4. Diagonally cut the violet and white FIMO professional in half. Join two halves each to create one two-coloured block. Using the roller roll out this block, fold in half (placing violet on violet, white on white) and repeat until you have a smooth transition of colours.



2. Carefully tear off small bits of the leaf gold metal and place on as many balls as you like. Using a knitting needle carefully make a hole into each bead. Harden them in the oven at 110 °C for 30 min. After cooling, varnish the beads with the gloss to prevent the leaf gold from rubbing off.



5. Roll up the flattened sheet, beginning with the light-coloured end. The darker colour will be on the outside.



3. Mix two strips of the transparent FIMO professional with a sheet of gold leaf. Knead together until fully intermixed. With the acrylic roller flatten the mixture, until it is approx. 1/2 mm thick. Then use it to wrap around the medium-sized beads: The thinner the gold mixture is, the more impressive the depth effect will be.



6. Cut the cane in half and add a strip of white FIMO professional. Repeat this process twice until your cane has a pattern with an eight-pointed star.

Find out how to create even more beads on the FIMO website!



MATERIALS

- 1 block FIMO professional "white" 8004-0
- 1 block FIMO professional "turquoise" 8004-32
- 1 block FIMO professional "ultramarine" 8004-33
- 1 block FIMO professional "violet" 8004-61
- 1 block FIMO effect "translucent white" 8020-014
- Leaf metal gold 8781-11
- Blade set 8700 04
- Grind'n polish set 8700 08
- Acrylic roller 8700 05
- Gloss varnish 8703 01 BK
- Oven thermometer 8700 22

level crafting time 110 °C

 hard  ca. 50 min  30 min

FIMO® PROFESSIONAL – THE CLAY FOR THE HIGHEST OF DEMANDS



FIMO® professional
STANDARD BLOCK
8004-..

85 g, 55 x 55 x 24 mm,
 segmented into 8 portions,
 24 brilliant colours,
 min. order quantity: 4



Product information

- Oven-hardening modelling clay
- Especially for professionals, artists and advanced users
- Firm consistency for particularly filigree items
- 24 brilliant colours, incl. 5 True Colour colours
- Practical division into 8 portions for easy blending
- Compatible with FIMO soft, FIMO effect and FIMO professional doll art
- Easy to open
- The long-established original modelling clay
- Consistent high level of quality for meeting the highest of demands
- Infinitely versatile: for jewellery, accessories and home deco items

Colour packs (p. 71):

- 2 different sets
- True Colours with the purest of pigments (with colour mixing system – for exact and brilliant blending results)
- Basic Colours

Mix quick (p. 71):

- Clay softener
- Extra soft material for kneading into firm FIMO
- For an easier and faster softening of firm FIMO

Colour display (p. 70):

- Comprising 4 feed trays
- 1 compartment for presentation of brochures, finished samples or give-aways
- Intelligent, modular snap-in design
- 24 FIMO professional colours
- Display topper with 14 language versions
- 1 Colour label





FIMO® professional

LARGE BLOCK 8041-..

454 g (1 lb), with portioning aid, 24 brilliant colours, min. order quantity: 1

Comes in 24 brilliant colours!

 0 white	 1 lemon yellow	 02 champagne
 4 orange	 5 green	 6 purple
 9 black	 17 ochre	 23 bordeaux
 29 carmine	 31 turquoise	 33 ultramarine
 34 navy blue	 57 leaf green	 61 violet
 62 lavender	 74 terracotta	 77 chocolate
 80 dolphin grey	 100 true yellow	 200 true red
 210 true magenta	 300 true blue	 500 true green



Customize me! Find out more about our customisable FIMO displays from p. 80!

FIMO® professional

COLOUR DISPLAY 8004 VS

Content: 24 colours, 192 blocks à 85 g, dimensions (with topper): approx. w 400 x d 420 x h 560 mm, min. order quantity: 1





FIMO® professional

COLOUR PACK 'TRUE COLOURS' 8003 01

Content: 6 blocks à 85 g (white, true yellow, true red, true magenta, true blue, true green), blending table, min. order quantity: 1



FIMO® professional

COLOUR PACK 'BASIC COLOURS' 8043 C12-1

Content: 12 half blocks à 25 g (white, champagne, true yellow, true red, true magenta, true blue, orange, true green, violet, terracotta, dolphin grey, black), instructions, min. order quantity: 1



FIMO®

MIX QUICK 8026

Content: 100 g block, min. order quantity: 10



FIMO® PROFESSIONAL DOLL ART

Product information

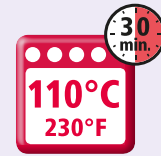
- Especially suitable for doll-making applications
- Ideal for the adding of parts and smoothing over of joints
- Extremely pliable and dimensionally stable
- Natural colours with semi-matt porcelain finish
- Practical division into 8 portions
- Special formula with excellent opacity for miniature faces
- Compatible with FIMO professional, FIMO soft and FIMO effect doll art display
- 6 doll art colours



FIMO® professional doll art

DOLL ART 8027-..

85 g, 55 x 55 x 24 mm, segmented into 8 portions, 6 colours, min. order quantity: 4



03 porcelain semi-opaque		44 beige semi-opaque	
45 sand opaque		78 nougat opaque	
432 rosé semi-opaque		435 cameo opaque	

FIMO® professional doll art

LARGE BLOCK 8071-..

454 g (1 lb), with portioning aid, 6 colours, min. order quantity: 1



03 porcelain semi-opaque		44 beige semi-opaque	
45 sand opaque		78 nougat opaque	
432 rosé semi-opaque		435 cameo opaque	

*Combinable with 8004 VS...
more information from p. 80!*



FIMO® professional doll art

**DISPLAY
8027 VS**

Content: 6 colours, 48 blocks à 85 g,
dimensions (with topper): approx. w 400 x d 265 x h 300 mm,
min. order quantity: 1



FIMO® professional doll art

**COLOUR PACK
8073 C12-1**

Content: 12 half blocks à 25 g (white, porcelain, true yellow, ochre, carmine, rosé, cameo, beige, sand, terracotta, nougat, black), instructions, min. order quantity: 1



MODELLING TOOLS



Product information

- High-quality tools
- Designed to satisfy the needs of artists and advanced users
- For the creation of e.g. original pendants and brooches

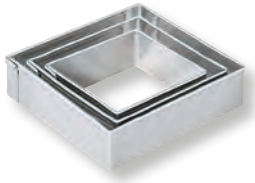
Cutters:

- High-quality, multiple-sized metal shaped cutters
- Three different sizes per motif in each set: 4 cm, 5 cm, 6 cm
- Four different geometrical shapes: diamond, navette, pennant and teardrop
- Sharp-edged cutting side for precise results
- Rounded top edge to prevent injury
- Seams riveted on outside to ensure perfect contours
- Ideal for creating jewellery
- Easy to clean

Clay extruder:

- High-quality tool
- Suitable for all unhardened FIMO modelling clays
- Extra large diameter for little effort on crank
- Removable crank handle allows ergonomic, comfortable turning with little effort
- Moving feeder plate at the end of the tree rod minimises frictional forces and facilitates extrusion
- Hexagon plug-in head permits use with a cordless screwdriver
- 20 different motif discs for strings of clay in various diameters and shapes
- Easy to clean





FIMO® professional

CUTTER 'DIAMOND' 8724 04 PB

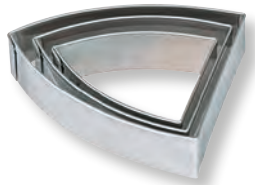
3 different sizes,
min. order quantity: 1

FIMO® professional

CUTTER 'NAVETTE' 8724 05 PB

3 different sizes,
min. order quantity: 1

*Each shape comes
in 3 different sizes!*



FIMO® professional

CUTTER 'PENNANT' 8724 06 PB

3 different sizes,
min. order quantity: 1

FIMO® professional

CUTTER 'TEARDROP' 8724 07 PB

3 different sizes,
min. order quantity: 1

FIMO® professional

CLAY EXTRUDER 8700 17

Clay Extruder with detachable handle
(dimensions cylinder: length 127 mm, inside diameter: 20 mm),
20 different motif discs, spare rubber washers, step-by-step
instructions, storage box, min. order quantity: 1



20 different motif discs!



MODELLING TOOLS



Product information

- High-quality tools
- Designed to meet the needs of artists and advanced users
- Different tools ideal for shaping, smoothing and accentuating as well as forming intricate details and patterns

Clay scraper set:

- High-class design
- 2 flexible scrapers (tooth scraper, smooth scraper)
- Made of stainless steel
- Ideal for embossing and scoring patterns
- For shaping, smoothing, measuring (cm / inch scale), and portioning
- Facilitates the removal from smooth surfaces
- Easy to clean

Modelling tools:

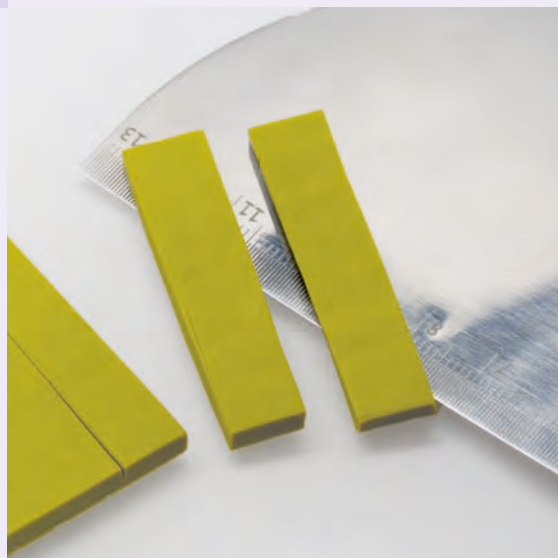
- High-quality modelling tool, each with two different modelling tips
- Shaft in maple wood with a matt lacquer finish
- Modelling tips made of stainless steel
- Overall length 20 cm
- For precise shaping and forming of modelling clay
- Easy to clean



FIMO® professional

CLAY SCRAPER SET 8700 15

Content: 2 extra flexible scrapers (tooth scraper, smooth scraper), dimensions: tooth scraper 128 x 54 mm, smooth scraper 130 x 65 mm, min. order quantity: 5





FIMO® professional

'DRILL & SMOOTHING TOOL'
8711 01 BK

Content: Drill (Ø 2.5 mm, 40 mm long), ideal for drilling through already hardened FIMO; ideal for smoothing, cutting off modelling clay and accentuating elevated details;
min. order quantity: 5



FIMO® professional

'BALL TOOL'
8711 03 BK

Content: 2 different round heads (Ø 1.5 mm, Ø 8 mm), ideal for shaping unhardened modelling clay (hollows, bulges or eye sockets) and forming intricate details,
min. order quantity: 5



FIMO® professional

'NEEDLE & V-TOOL'
8711 04 BK

Content: Needle tip, V-tool (V: 60° angle), 40 mm long, for drilling holes in beads, for smoothing and forming intricate details and patterns, picking up and attaching small clay elements, perfect for carving and for creating uniform notches,
min. order quantity: 5







Air-drying modelling clays



>> Summer lanterns <<

These FIMOair light lanterns are quick and easy to make and ideal for adding a perfect finishing touch to any festive dinner table. Simply cover everyday preserve jars with a layer of FIMOair light, cut out motifs and leave to dry.

That's it – it takes little time to create these lovely lightweight summertime table decorations.

level



easy

crafting time



ca. 20 min



1. Cut an approx. 8 cm wide strip off the block of FIMOair light and roll it out to an approx. 4 mm thin sheet on a glass work surface using the acrylic roller.

Tip: Place a sheet of baking paper between the glass work surface and the FIMOair light. This will make it easier to remove the rolled out sheet of FIMOair light later on.



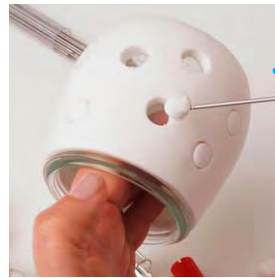
4. Cut off any excess FIMOair light at the join so that the sides meet but do not overlap. Smooth over the edges well to make the join invisible. Use the kitchen knife again to cut off any surplus FIMOair light from around the base of the jar. Level out any unevenness with a modelling stick and a little water.



2. Straighten the edges by cutting them with a sharp kitchen knife and create a large rectangle.



3. Carefully peel the sheet of FIMOair light off the glass work surface. Cover the jar with the sheet of FIMOair light. Position the long edge of the clay around the rim. Press on carefully as you do so.

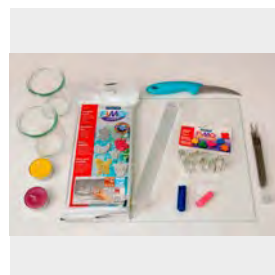


5. Create a pattern by cutting out holes in the FIMOair light, using pen caps in different diameters. Remove the clay from the holes with a bead piercing needle to allow the candlelight to shine through later. Should any bits of FIMOair light remain stuck to the glass, carefully scratch them off with the bead piercing needle. For a different design, you could use FIMO shaped cutters. Finally leave the jars dry completely at room temperature overnight.

Find the full tutorial here:

www.fimo.com

[@fimostaedtler](https://www.instagram.com/fimostaedtler)



MATERIALS

- FIMOair light "white" 8131-0
- Acrylic roller 8700 05
- Bead piercing needles 8712 20
- Shaped cutters 8724 03
- Modelling tools 8711
- Kitchen knife
- Pen caps in different diameters

FIMOair® – AIR-DRYING MODELLING CLAYS

Product information

- Air-drying modelling clays
- At least 95 % natural substances
- Ideal for art, recreation and hobby as well as for educational purposes in schools, kindergartens and other similar facilities



FIMOair basic:

- Clay-like
- Ready to use
- Dimensionally stable, neutral smell
- Smooth consistency
- Foil packaging prevents the drying out of the modelling clay
- Hardened models can be modified (filed, sanded, drilled, painted, varnished)



FIMOair natural:

- Wood-like
- Ready to use
- Particularly break resistant after hardening
- Ideal for making dolls and puppets as well as sculpting
- Foil packaging prevents the drying out of the modelling clay
- Hardened models can be modified (filed, sawn, carved, drilled, painted, varnished)



FIMOair light:

- Dries when exposed to air or in the microwave for approx. 10 min
- Ready to use
- Extremely lightweight
- Dimensionally stable, neutral smell
- Pleasant feel, does not stick
- Foil packaging prevents the drying out of the modelling clay
- Hardened models can be modified (glued, painted, varnished)





FIMOair® basic

BLOCK 500g
8100-..

1 block, 500 g, 3 colours,
min. order quantity: 12

*Pottery
without a kiln!*

0	
white	
43	
flesh	
76	
terracotta	



FIMOair® basic

BLOCK 1000g
8101-..

1 block, 1000 g, 3 colours,
min. order quantity: 6

0	
white	
43	
flesh	
76	
terracotta	



*Ideal for hand and
string puppets!*



FIMOair® natural

BLOCK 350g
8150-..

1 block, 350 g, 2 colours,
min. order quantity: 12

02	
edelweiss	
7	
sandstone	



FIMOair® light

BLOCK 125g
8133-..

1 block, 125 g, 2 colours,
min. order quantity: 10

0
white



76
terracotta



FIMOair® light

BLOCK 250g
8131-..

1 block, 250 g, 2 colours,
min. order quantity: 12

0
white



76
terracotta



FIMOair® light

BLOCK 500g
8132-0

1 block, 500 g,
min. order quantity: 6

0
white



FIMOair® light

CLASS PACK 4 X 250 g
8131 50 LX

Content: 4 x FIMOair light,
250 g white, Packed in neutral foil,
directions for use and modelling
instructions, min. order quantity: 6

0
white





NORIS® MODELLING CLAY

Ideal for school and kindergarten!

NORIS® MODELLING DOUGH & CLAY

Product information

Modelling dough:

- Exceptionally soft and clean
- Easy to knead, cut, blend, squeeze and roll out
- Does not stick
- Ideal for developing a feeling for shape and colour through playing
- CE-conform

Modelling clay:

- Basic modelling clay for children
- Ideal for school and kindergarten
- Remains pliable and retains its shape
- Colours can be blended
- CE-conform

Does not stick!



Noris® Modelling dough

SET 'BASIC COLOURS' 8134 01

Set, containing 4 pots à 130 g, in 4 basic colours (white, yellow, red, blue), min. order quantity: 12



Noris® Modelling dough

SET 'SPECIAL COLOURS' 8134 02

Set, containing 4 pots à 130 g, in 4 special colours (orange, pink, green, violet), min. order quantity: 12



Noris® Modelling clay

STANDARD BLOCK, 1000 g 8421-..

1 block, 1000 g, 10 colours,
min. order quantity: 1





Noris® Modelling clay

PLASTIC BOX 8420 SB1

Plastic box, containing 14 bars à 21 g, in 7 different colours (white, yellow, orange, red, blue, green, black), min. order quantity: 10



Noris® Modelling clay

CARDBOARD BOX 8420 C6

Cardboard box, containing 6 bars à 21 g, in assorted colours (white, yellow, red, blue, green, black), min. order quantity: 10



Noris® Modelling clay

CARDBOARD BOX 8420 C10

Cardboard box, containing 6 bars à 21 g, in 10 assorted colours (white, yellow, pale pink, orange, red, violet, blue, green, brown, black), min. order quantity: 10



FIMO® COLOUR DISPLAY

Product information

- Individually combinable
- Comprising feed trays
- Compartment for presentation of brochures, finished samples or give-aways
- Intelligent, modular snap-in design
- Up to 24 colours and 288 blocks à 57 g
- Display dimensions approx. w 400 x d 420 x h 560 mm

Intelligent and modular snap-in structure!

Up to (5) trays can be stacked on top of each other!

Changeable language sheet



Alternative structure:





FIMO® colour display

**DISPLAY TOPPER
LR80 TOP**

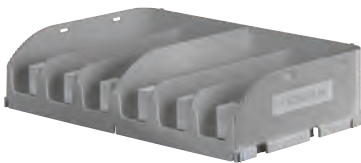
Dimensions approx. w 370 x d 160 x h 3 mm
Min. order unit: 1



FIMO® colour display

**DISPLAY TUBE
LR80 TUB**

Dimensions approx. w 375 x d 225 x h 60 mm
Min. order unit: 1



FIMO® colour display

**DISPLAY TRAY
LR80 TRAY**

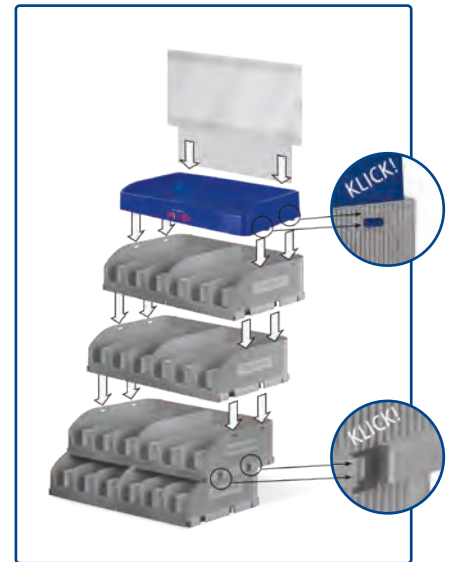
Dimensions approx. w 400 x d 265 x h 95 mm
Min. order unit: 1



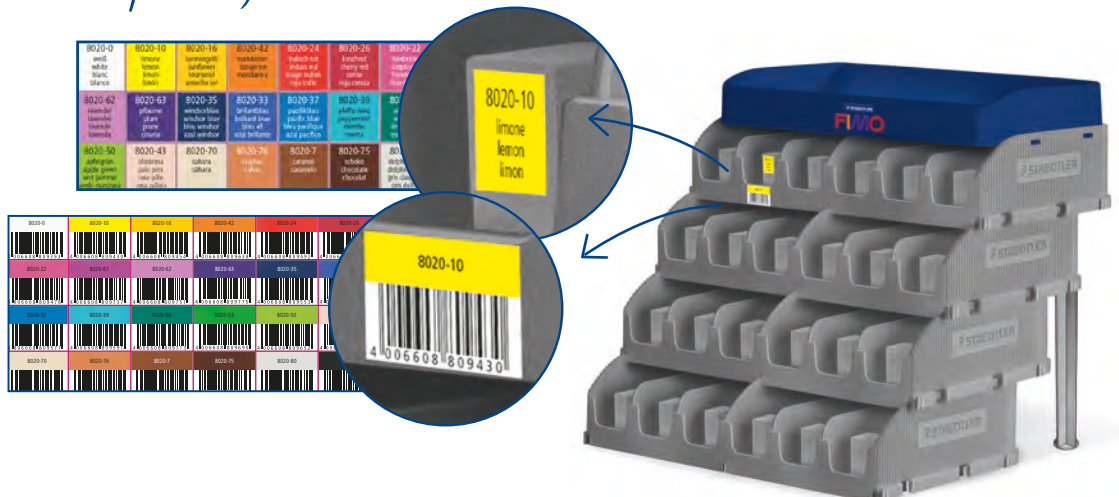
FIMO® colour display

**DISPLAY FOOT
LR80 FOOT**

Min. order unit: 1



The colour label comes complete with corresponding article numbers, colour names and EAN codes. The label can be positioned on the display and feed pushers respectively.



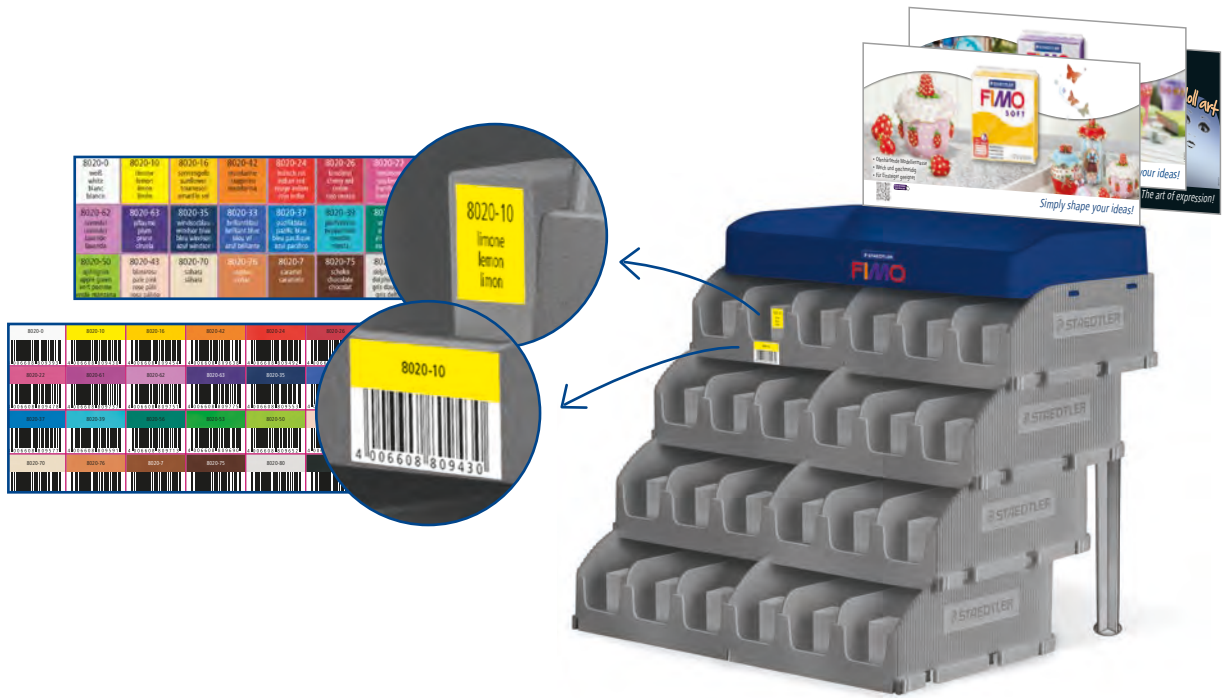
FIMO® COLOUR DISPLAY

COLOUR LABEL

Comes complete with corresponding article numbers, colour numbers and EAN codes.

HEADER:

Available in various languages!



FIMO® effect

COLOUR LABEL 01008A360003

FIMO leather-effect +
gemstone +
neon colours



FIMO® effect

HEADER GEMSTONE COLOURS V80101VSC1



FIMO® leather-effect

HEADER LEATHER-EFFECT COLOURS V80102VSC1



FIMO® effect

HEADER NEON COLOURS V80103VSC1



Display FIMO® kids

**COLOUR LABEL
V8030 VS E**



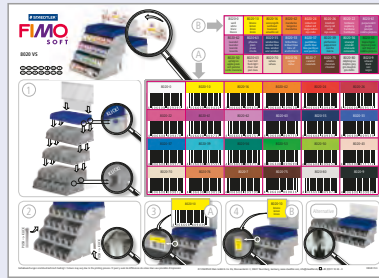
Display FIMO® kids

**HEADER
V8030VSC1**



Display FIMO® soft

**COLOUR LABEL
V8020 VS E**



Display FIMO® soft

**HEADER
V8020VSC1**



FIMO® effect

**COLOUR LABEL
V8010 VS E**

glitter, translucent,
metallic, pearl, stone and
nightglow colours, colour label



FIMO® effect

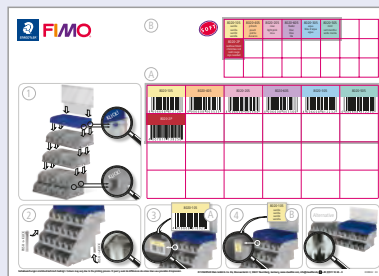
**HEADER
V8010VSC1**



FIMO® soft / effect

**COLOUR LABEL
01080K9**

Pastel colours +
christmas red



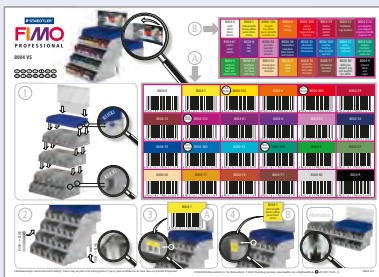
FIMO® effect

**HEADER PASTEL COLOURS
V80201VSC1**



Display FIMO® professional

**COLOUR LABEL
V8004 VS E**



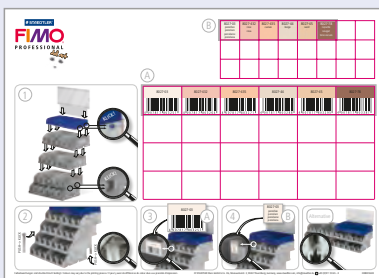
Display FIMO® professional

**HEADER
V8004VSC1**



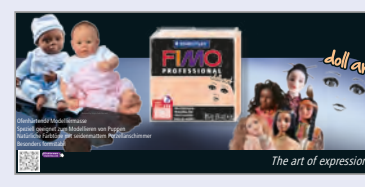
Display FIMO® professional doll art

**COLOUR LABEL
01080F3600**



Display FIMO® professional doll art

**HEADER
V8027VSC1**



FIMO® METAL TOWER

FIMO metal tower, empty

LR MTFIMO

- Variable, flexible stocking
- Attractive market presence at POS
- Advertising set of product panels available, in order to explain the different product features of each product line

AVAILABLE PRODUCT PANELS

- 1 leather-effect
- 2 soft
- 3 effect
- 4 FIMO general

Measurements:

55 x 192 x 50 cm (BxHxT)

shipped:

assembled

configuration:

including 9 shelves,
4 FIMO graphics & 25 hooks
(Suggested planogram on celum)

1 FIMO LEATHER-EFFECT

1a FIMO leather-effect DIY kits (p. 42)

- 5x 8015 DIY1: Jewellery
- 5x 8015 DIY2: Tassels
- 5x 8015 DIY3: Plant hangers
- 5x 8015 DIY4: Glasses case

1b Standard block leather-effect, 57 g (p. 41)

upper row

- 9x 8010-029 ivory
- 9x 8010-109 saffron yellow
- 9x 8010-179 ochre
- 9x 8010-519 olive

second row

- 9x 8010-249 watermelon
- 9x 8010-229 berry
- 9x 8010-309 indigo
- 9x 8010-369 lagoon

third row

- 9x 8010-749 rust
- 9x 8010-779 nut
- 9x 8010-809 dove grey
- 9x 8010-909 black

1c Lookbook leather-effect GB (p. 46)

OV080N6000



Suggested filling;

FIMO soft (left side) &

FIMO leather-effect (right side)

a

b

c

2 FIMO SOFT

a

DIY Sets (p. 49)

5x 8025 DIY1:
DIY Kit 'Photo Clip Holder'

5x 8025 DIY2:
DIY Kit 'Earring'

5x 8025 DIY3:
DIY Kit 'Keychain'

5x 8025 DIY4:
DIY Kit 'Necklace'

b

Standard block soft, 57 g (p. 27)

upper row	third row
9x 8020-0 white	9x 8020-39 peppermint
9x 8020-10 limone	9x 8020-33 brilliant blue
9x 8020-42 tangerine	9x 8020-7 caramel
9x 8020-26 cherry red	9x 8010-9 black
second row	
9x 8020-50 apple green	
9x 8020-56 emerald	
9x 8020-22 raspberry	
9x 8020-61 purpure	

3 FIMO EFFECT & ACCESSORIES

d

Accessories

upper row, left side
5x 8700 05 acrylic roller (p. 56)

upper row, right side
10x 8700 04 mixed blade set (p. 56)

second row, left side
10x 8711 WP4-1 modelling tools (p. 55)

second row, upper right side
10x 8725 21 silicon push mould "feathers" (p. 61)

second row, lower right side
3x 8782 BK size for leaf metal (p. 67)

third row, left side
15x 8781-11 leaf metal (p. 66)

third row, right side
10x 8704 01 gloss varnish (p. 67)

b

Standard block effect 57 g (p. 35)

upper row	third row
9x 8010-101 neon yellow	9x 8020-08 metallic mother-of-pearl
9x 8010-501 neon green	9x 8020-81 metallic silver
9x 8010-201 neon fuchsia	9x 8020-27 metallic copper
9x 8010-301 neon blue	9x 8020-11 metallic gold
second row	
9x 8020-105 pastel vanilla	
9x 8020-405 pastel peach	
9x 8020-505 pastel mint	
9x 8020-205 pastel rosé	

4 FIMO CREATIVE KITS & ACCESSORIES

a

Creative kits (pp. 32)

4x 8025 30 UNICORN 'LILLY'

4x 8025 31 LLAMA 'PEDRO'

4x 8025 32 SLOTH 'FLAPY'

4x 8025 33 KAWAII 'SUSHIS'

4x 8025 34 KAWAII 'DONUT'

d

Accessories (pp. 56)

upper row	bottom row
5x 8700 05 acrylic roller	5x 8700 08 grind'n polish set
10x 8700 04 blade set	5x 8700 11 oven thermometer

THE STAEDTLER BRAND SHOP

Ideal product presentation for each and every selling space

- Different combinations of modules
- Variable, flexible stocking
- Attractive market presence at POS
- Emotional, experience-oriented product presentation
- Target group-appropriate assortment of goods (clear orientation)
- Clear structure and easy handling
- Service function / product explanation
- Superior design, stimulates sales

Brand Shop

ELEMENTS FIMO® kids 0,5 m

- 1 x **9001MASTER**
Core element, 51 x 198 x 50 cm
- 1 x **9000SHELF3**
Shelf, 50 cm
- 1 x **9000TSV**
(24 pcs/set) FIMO push system
- 1 x **OD008EO**
FIMO push system Labels
- 1 x **9000LIGHT**
(4 pcs/set) LED light
- 1 x **9000HAKEN**
(30 pcs/set) Hooks, 3 x 18 cm

- 1 x **OD008B0**
OD082C0 Logo for head unit small, 'FIMO Made by You ♥'
- 1 x **9000HEAD2**
Logo head unit small, 49 x 27 x 14 cm
- 1 x **9000M09**
Module 9, 48 cm
- 1 x **OD082JO**
Graphics for Modules FIMO, 4 x 24 cm, 2 x 48 cm

1 Colour pack 'basic' (p. 9)
2 versions // **8032-01 / 02**
Level / Row: **1**
No. of hooks: **3**
Max. no. of prod./hook: **5**

3c funny kits (p. 17)
2 versions // **8035 16 - 17**
Level / Row: **22**
No. of hooks: **2**
Max. no. of prod./hook: **8**

2a form&play (pp. 10)
3 versions // **8034 01 - 27**
Level / Row: **6**
No. of hooks: **3**
Max. no. of prod./hook: **5**

4 work&play cutting tools (p. 22)
8700 34
Level / Row: **22**
No. of hooks: **1**
Max. no. of prod./hook: **10**

2b form&play (pp. 10)
3 versions // **8034 01 - 27**
Level / Row: **10**
No. of hooks: **3**
Max. no. of prod./hook: **5**

5 Standard block kids, 42 g (p. 7)
8 colours // **8030-FN**
Level / Row: **27**
No. of comp.: **8**
Max. no. of prod./comp.: **16**

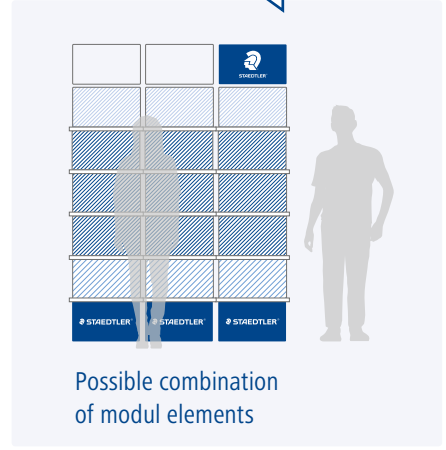
3a funny kits (p. 17)
3 versions // **8035 10 - 12**
Level / Row: **14**
No. of hooks: **3**
Max. no. of prod./hook: **8**

6 toolbox sets (p. 19)
2 versions // **8039 01-03**
Level / Row: -
No. of comp.: **2**
Max. no. of prod./comp.: **3**

3b funny kits (p. 17)
3 versions // **8035 13 - 15**
Level / Row: **18**
No. of hooks: **3**
Max. no. of prod./hook: **8**



For more information check out our brand shop info brochure!



Brand Shop

ELEMENTS

FIMO® soft / effect / leather-effect presentation of product novelties

1 m

- 1 x **9001MASTER**
Core element, 51 x 198 x 50 cm
- 1 x **9001EXTEND**
Extension element, 49 x 198 x 50 cm
- 2 x **9000SHELF3**
Shelf, 50 cm



- 1 x **9000TSV**
(24 pcs/set) FIMO push system
- 2 x **0D008E0**
FIMO push system Labels
- 1 x **9000LIGHT**
(4 pcs/set) LED light
- 2 x **9000HAKEN**
(30 pcs/set) Hooks,
3 x 18 cm
- 1 x **0D008B0**
Logo for head unit small,
'FIMO Made by You ♥'

- 1 x **9000HEAD2**
Logo head unit small,
49 x 27 x 14 cm
- 1 x **9000HEAD1**
Logo head unit large,
49 x 35 x 20,5 cm
- 3 x **9000M03**
Module 3, 24 cm
- 1 x **0D082J0**
Graphics for Modules FIMO,
4 x 24 cm, 2 x 48 cm

- 1** Colour pack soft 12 colours (pp. 28)
4 versions // **8023 C12-1 - 5**
Level / Row: **1**
No. of hooks: **4**
Max. no. of prod./hook: **6**
- 2** Colour pack effect, 12 colours (p. 35)
2 versions // **8013 C12-1 / 2**
Level / Row: **1**
No. of hooks: **2**
Max. no. of prod./hook: **6**
- 3a** DIY set FIMO soft/effect (p. 49)
3 versions // **8025 DIY1 - 4**
Level / Row: **6**
No. of hooks: **3**
Max. no. of prod./hook: **5**
- 3b** DIY set FIMO leather-effect (p. 42)
3 versions // **8025 DIY1 - 4**
Level / Row: **6**
No. of hooks: **3**
Max. no. of prod./hook: **5**
- 4a** Creative kit (pp. 32)
5 versions // **8025 30-34**
Level / Row: **11**
No. of hooks: **5**
Max. no. of prod./hook: **4**
- 4b** Oven thermometer (p. 55)
8700 22
Level / Row: **11**
No. of hooks: **1**
Max. no. of prod./hook: **5**
- 5a** Modelling tools (p. 55)
8711
Level / Row: **16**
No. of hooks: **1**
Max. no. of prod./hook: **10**
- 5b** Modelling tools (p. 55)
2 versions // **8711 WP4-1 / 2**
Level / Row: **16**
No. of hooks: **2**
Max. no. of prod./hook: **10**
- 6** Acrylic roller (p. 56)
8700 05
Level / Row: **16**
No. of hooks: **1**
Max. no. of prod./hook: **4**
- 7** Silicone moulds (p. 61)
4 versions // **8725 20 - 27**
Level / Row: **22**
No. of hooks: **4**
Max. no. of prod./hook: **5**
- 8** Cutters (p. 56)
1 Variante // **8700 04**
Level / Row: **16**
No. of hooks: **1**
Max. no. of prod./hook: **10**
- 9** Liquid 50 ml (p. 39)
4 colours // **8050-9/00/11/81**
Level / Row: **16**
No. of hooks: **4**
Max. no. of prod./hook: **5**
- 10a** Standard block soft, 57 g (p. 27)
8 colours // **8020-FN**
Level / Row: **27**
No. of comp.: **8**
Max. no. of prod./comp.: **12**
- 10b** Standard block effect, 57 g (p. 35)
8 colours // **8020-FN**
Level / Row: **27**
No. of comp.: **8**
Max. no. of prod./comp.: **12**
- 11** Standard block effect, 57 g (p. 35)
16 colours // **8020-FN**
Level / Row: **27**
No. of comp.: **16**
Max. no. of prod./comp.: **12**
- 12** Large block soft, 1 lb (p. 28)
6 colours // **8021-FN**
Level / Row: -
No. of comp.: **6**
Max. no. of prod./comp.: **3**
- 13** Clay machine (p. 56)
8713
Level / Row: -
No. of comp.: **1**
Max. no. of prod./comp.: **1**
- 14** Leaf metal (p. 66)
8781- 11 / 26 / 81
Level / Row: -
No. of comp.: **1**
Max. no. of prod./comp.: **20**



1,0 m



ca. 2 m

Brand Shop

ELEMENTS**FIMO® soft / effect / leather-effect****1 m**

- 1** Colour pack soft, 24 colours (p. 28)
8023 C24-1
Level / Row: 1
No. of hooks: 1
Max. no. of prod./hook: 6
- 2** Colour pack soft, 12 colours (pp. 28)
8023 C12-1 - 5
Level / Row: 1
No. of hooks: 1
Max. no. of prod./hook: 6
- 3** DIY sets (p. 49)
1 version // **8025 DIY1 - 4**
Level / Row: 1
No. of hooks: 1
Max. no. of prod./hook: 5
- 4** DIY sets (p. 49)
2 versions // **8025 DIY1 - 4**
Level / Row: 1
No. of hooks: 2
Max. no. of prod./hook: 6
- 5** Modelling tools (p. 55)
8711
Level / Row: 6
No. of hooks: 1
Max. no. of prod./hook: 10
- 6** Modelling tools (p. 55)
8711 WP4-1
Level / Row: 6
No. of hooks: 1
Max. no. of prod./hook: 10
- 7** Acrylic roller (p. 56)
8700 05
Level / Row: 6
No. of hooks: 1
Max. no. of prod./hook: 4
- 8** Cutters, mixed (p. 56)
8700 04
Level / Row: 6
No. of hooks: 1
Max. no. of prod./hook: 10
- 1 x **9001MASTER**
Core element, 51 x 198 x 50 cm
- 1 x **9001EXTEND**
Extension element, 49 x 198 x 50 cm
- 8 x **9000SHELF3**
Shelf, 50 cm
- 3 x **9000TSV**
(24 pcs/set) FIMO push system
- 2 x **OD008E0**
FIMO push system Labels
- 2 x **9000LIGHT**
(4 pcs/set) LED light
- 1 x **9000HAKEN**
(30 pcs/set) Hooks, 3 x 18 cm
- 9** Creative kit (pp. 32)
2 versions // **8025 30-34**
Level / Row: 11
No. of hooks: 5
Max. no. of prod./hook: 4
- 10** Liquid, 50 ml (p. 39)
4 colours // **8050-0 / 9 / 11 / 81**
Level / Row: 6
No. of hooks: 4
Max. no. of prod./hook: 5
- 11** Texture sheets (pp. 57)
8744 10 - 17
Level / Row: 12
No. of hooks: 1
Max. no. of prod./hook: 10
- 12** Leaf metal (p. 66)
8781-11 / 26 / 81
Level / Row: 12
No. of hooks: 1
Max. no. of prod./hook: 10
- 13** Varnish for leaf metal (p. 67)
8782 BK
Level / Row: 12
No. of hooks: 1
Max. no. of prod./hook: 5
- 14** Semi-gloss varnish (p. 67)
8705 01 BK
Level / Row: 12
No. of hooks: 1
Max. no. of prod./hook: 5
- 15** Gloss varnish (p. 67)
8703 01 BK
Level / Row: 12
No. of hooks: 1
Max. no. of prod./hook: 5
- 1 x **OD008B0**
Logo for head unit small, 'FIMO Made by You ♥'
- 1 x **9000HEAD2**
Logo for head unit small, 49 x 27 x 14 cm
- 1 x **9000HEAD1**
Logo head unit large, 49 x 35 x 20,5 cm
- 4 x **9000M03**
Module 3, 24 cm
- 1 x **OD082J0**
Graphics for Modules FIMO, 4 x 24 cm, 2 x 48 cm
- 16** Silicone moulds (p. 59)
2 versions // **8725-20 - 27**
Level / Row: 12
No. of hooks: 2
Max. no. of prod./hook: 5
- 17a** Standard block soft, 57 g (p. 27)
16 colours // **8020-FN**
Level / Row: 18
No. of comp.: 16
Max. no. of prod./comp.: 12
- 17b** Standard block soft, 57 g (p. 27)
8 colours // **8020-FN**
Level / Row: 21
No. of comp.: 8
Max. no. of prod./comp.: 12
- 17c** Standard block effect, 57 g (p. 35)
8 colours // **8020-FN**
Level / Row: 21
No. of comp.: 8
Max. no. of prod./comp.: 12
- 17d** Standard block effect, 57 g (p. 35)
16 colours // **8020-FN**
Level / Row: 24
No. of comp.: 16
Max. no. of prod./comp.: 12
- 18** Standard block effect, 57 g (p. 35)
16 colours // **8020-FN**
Level / Row: 27
No. of comp.: 16
Max. no. of prod./comp.: 12
- 19** Large block soft, 1 lb (p. 28)
12 colours // **8021-FN**
Level / Row: -
No. of comp.: 12
Max. no. of prod./comp.: 3



Brand Shop

ELEMENTS**FIMO® professional / professional doll art 0,5 m**

- 1 x **9001MASTER**
Core element, 51 x 198 x 50 cm
- 3 x **9000SHELF3**
Shelf, 50 cm
- 1 x **9000TSV**
(24 pcs/set) FIMO push system
- 3 x **0D008E0**
FIMO push system Labels
- 1 x **9000LIGHT**
(4 pcs/set) LED light
- 1 x **9000HAKEN**
(30 pcs/set) Hooks,
3 x 18 cm

- 1 x **0D008B0**
Logo for head unit small,
'FIMO Made by You ♥'
- 1 x **9000HEAD2**
Logo for head unit small,
49 x 27 x 14 cm
- 2 x **9000M03**
Module 3, 24 cm
- 1 x **0D082J0**
Graphics for Modules FIMO,
4 x 24 cm, 2 x 48 cm

1 Colour pack 'Basic Colours', 12 colours (p. 72)
8043 C12-1
Level / Row: 1
No. of hooks: 1
Max. no. of prod./hook: 6

6 Clay scraper set (p. 78)
8700 15
Level / Row: 12
No. of hooks: 1
Max. no. of prod./hook: 10

10a Standard block professional, 85 g (p. 71)
8 colours // **8004-FN**
Level / Row: 23
No. of comp.: 8
Max. no. of prod./comp.: 8

2 Colour pack 'doll art', 12 colours (p. 74)
8073 C12-1
Level / Row: 1
No. of hooks: 1
Max. no. of prod./hook: 6

7a Cutters (p. 77)
2 versions // **8724 04 / 05 PB**
Level / Row: 12
No. of hooks: 2
Max. no. of prod./hook: 5

10b Standard block professional, 85 g (p. 71)
8 colours // **8004-FN**
Level / Row: 26
No. of comp.: 8
Max. no. of prod./comp.: 8

3 Colour pack 'True Colours', 6 colours (p. 73)
8003 01
Level / Row: 1
No. of hooks: 1
Max. no. of prod./hook: 6

7b Cutters (p. 77)
2 versions // **8724 06 / 07 PB**
Level / Row: 15
No. of hooks: 2
Max. no. of prod./hook: 5

11 Large block professional, 1 lb (p. 72)
6 colours // **8041-FN**
Level / Row: -
No. of comp.: 6
Max. no. of prod./comp.: 3

4 Modelling tools (p. 79)
3 versions // **8711 01 BK / 03 BK / 04 BK**
Level / Row: 6
No. of hooks: 3
Max. no. of prod./hook: 6

8 Large block doll art, 1 lb (p. 74)
2 colours // **8071-FN**
Level / Row: 20
No. of comp.: 2
Max. no. of prod./comp.: 2

5 Clay extruder (p. 77)
8700 17
Level / Row: 12
No. of hooks: 1
Max. no. of prod./hook: 6

9 Standard block doll art, 85 g (p. 74)
6 colours // **8027-FN**
Level / Row: 20
No. of comp.: 6
Max. no. of prod./comp.: 8



© STAEDTLER Mars GmbH & Co. KG
Moosaeckerstrasse 3
90427 Nuremberg
Germany

info@staedtler.com
www.staedtler.com

Edition 04/2020
Subject to change.

