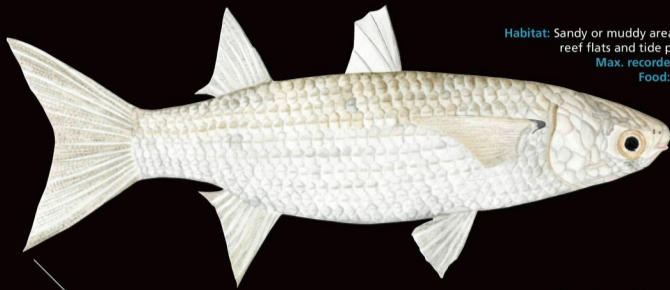


IŪN NAŌERO – ANOR

Most common reef fish species of Nauru



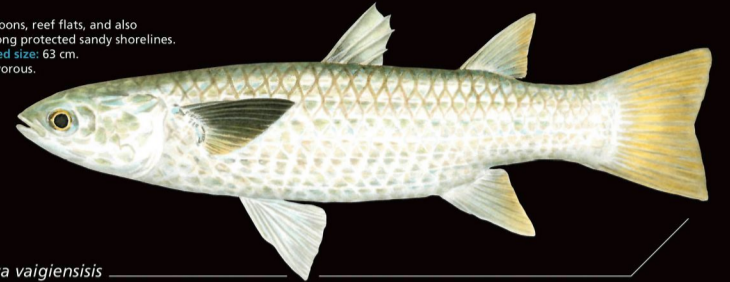
Habitat: Sandy or muddy areas of lagoons, reef flats and tide pools. 0–20 m.
Max. recorded size: 60 cm.
Food: Omnivorous.

Eaeōr • Fringelip mullet
Crenimugil crenilabis



Habitat: Lagoon and outer reefs in shallow areas exposed to mild or moderate surge. 0–3 m.
Max. recorded size: 23 cm.
Food: Algae and small invertebrates.

Dabukbuk • Banded sergeant
Abudedefduf septemfasciatus



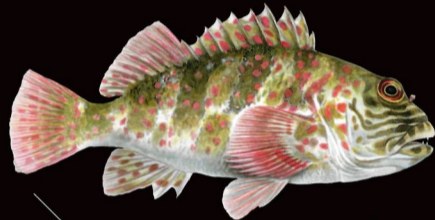
Habitat: Lagoons, reef flats, and also common along protected sandy shorelines.
Max. recorded size: 63 cm.
Food: Omnivorous.

Liza vaigiensis
Ikiokwō • Squartail mullet



Habitat: shallow outer reefs subject to surge. 0–20 m.
Max. recorded size: 30 cm.
Food: Algae, detritus, mollusks, crustaceans, worms, echinoderms, fish, sponges, foraminiferans, and eggs.

Ikūmūm • Wedgetail triggerfish
Rhinecanthus rectangulus



Habitat: Reef fronts and rocky shorelines exposed to moderate to strong surge. 0–3 m.
Max. recorded size: 30 cm.
Food: Primarily crabs, and other crustaceans, small fish, sea urchins or brittle stars.

Iudud • Stocky hawkfish
Cirrhitus pinnulatus



Habitat: Varied habitats, from rich coral reefs to weedy and rubble covered areas. 1–35 m.
Max. recorded size: 23 cm.
Food: Feeds mainly by tearing pieces from polychaetes, sea anemones, coral polyps, and algae.

Ikimago • Threadfin butterflyfish
Chaetodon auriga



Habitat: Surge zone of clear seaward reefs. 0–6 m.
Max. recorded size: 26 cm.
Food: Filamentous and calcareous algae.

Eabōrbōr • Whitespotted surgeonfish
Acanthurus guttatus



Habitat: Surge zone of outer reef flats, reef margins, and rocky coastlines. 0–10 m.
Max. recorded size: 46 cm.
Food: Small invertebrates (crabs, sea urchins, brittlestars, mollusks), small fish, echinoids, ophiuroids and polychaetes.

Earemae • Surge wrasse
Thalassoma purpureum



Habitat: Reef flats and lagoon and seaward reefs. 0–30 m.
Max. recorded size: 26 cm.
Food: Surface film of blue-green algae and diatoms, and small invertebrates.

Iubwiya • Striated surgeonfish
Ctenochaetus striatus



Habitat: Common in surge zones of exposed seaward reefs.
Max. recorded size: 38 cm.
Food: Herbivorous, but also feeds on crustaceans.

Iwiyi • Lined surgeonfish
Acanthurus lineatus



Habitat: Lagoon and seaward reefs. 1–24 m.
Max. recorded size: 50 cm.
Food: Seaweed and associated invertebrates.

Iyibawo • Blue sea chub
Kyphosus cinerascens



Habitat: Hides in caves and under ledges of subtidal reef flats, channels and margins to outer reef slopes. 1–50 m.
Max. recorded size: 30 cm.
Food: Mainly plankton such as crab larvae.

Emōn • Blotcheye soldierfish
Myripristis berndti



Habitat: Lagoon and seaward reefs with hard substrate. 0–90 m.
Max. recorded size: 27 cm.
Food: Filamentous algae.

Eweo • Convict surgeonfish
Acanthurus triostegus



Habitat: Sandy bottoms of reef flats, lagoons, and seaward reefs. 1–113 m.
Max. recorded size: 38 cm.
Food: Small worms and crustaceans.

Dōrañrañ • Yellowfin goatfish
Mulloidichthys vanicolensis



Habitat: Offshore coral reefs, and inshore rocky and coral reefs. 0–80 m.
Max. recorded size: 50 cm.
Food: Invertebrates and fish.

Ituwabū • Russell's snapper
Lutjanus russellii



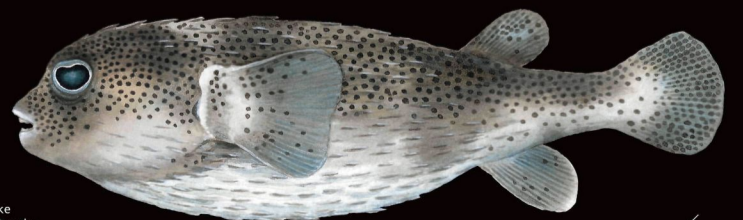
Habitat: Lagoon and semi-protected seaward reefs; prefers sheltered areas. 1–75 m.
Max. recorded size: 40 cm.
Food: Fish, shrimps, crabs, holothurians and cephalopods. Feeds at night.

Iname • Blacktail snapper
Lutjanus fulvus



Habitat: Lagoon pinnacles, channels, and outer reef slopes, in coral-rich areas with clear waters. 1–60 m.
Max. recorded size: 120 cm.
Food: Fish, crabs, and cephalopods.

Iwuro • Brownmarbled grouper
Epinephelus fuscoguttatus



Habitat: Lagoon and seaward reefs. 2–50 m.
Max. recorded size: 91 cm.
Food: Hard-shelled invertebrates like sea urchins, gastropods, and hermit crabs.

Dedawid • Spotfin porcupinefish
Diodon hystrix

