

Corporate Computer

Tech News & Support

 [RSS Feed](#)  [Comments](#)

- [Home](#)
- [About](#)
- [Service Request Form](#)
- [Tech Support Forums](#)
- [Parts Store](#)
- [Videos](#)

Search this website...

Repairing the Samsung 940MW LCD TV

January 19, 2010 by [CCL TECH](#)

Filed under: [Monitor Repair](#), [Samsung](#)



Today's post will cover the repair of the Samsung 940MW LCD TV or other models using the IP-48135T or BN44-00116B power supply. If you have a Samsung SyncMaster 940MW monitor that either has a blinking power light or a very dark picture or makes popping noises then this should help get you back running. Below you will find a full walk thru on repairing your LCD monitor. To do the repair you will need the following tools: Soldering iron, de-solder braid, Phillips screwdriver, flat blade screwdriver. You will also need the following electronic parts: qty(2) 680uf 25v capacitors, qty(2) 1000uf 10v capacitors, qty(2) 820uf 25v capacitors qty(1) 330uf 10v capacitor and qty(1) 330uf 25v capacitors. We sell a repair kit with all of the parts for \$14.00 This is not guaranteed to solve all problems but in most cases this is the issue with this model.

[Buy Now](#)



If you don't want to do the repair yourself, use the service request form above to schedule a repair. Most monitor repairs run \$30-35 plus return shipping.

Here we have a non functional Samsung 940MW 20" LCD monitor. This one has a dim picture and popping noise when you first power up the monitor but the symptoms could be no power or a



flashing power light too.

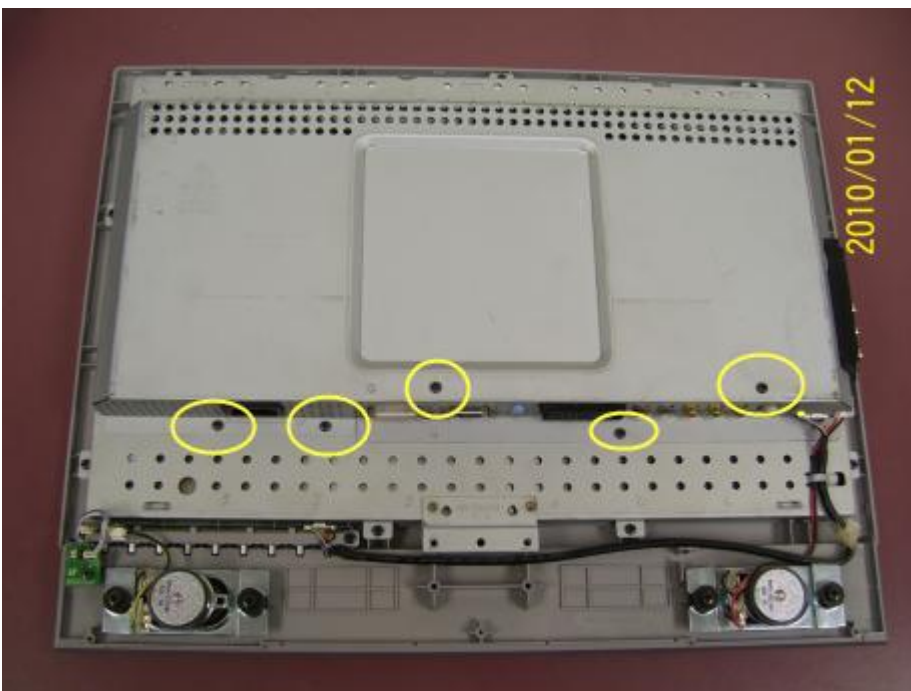
First you need to remove the power cable, signal cable and the stand. To remove the stand remove the 4 screws as shown in the picture below. After the stand is off the you will find a third case screw in the center of the lower back under the stand.



The case will pop open if you insert a small flat screwdriver between the 2 halves and apply a gentle pressure. Once it starts opening just use your fingers and work your way around the screen.

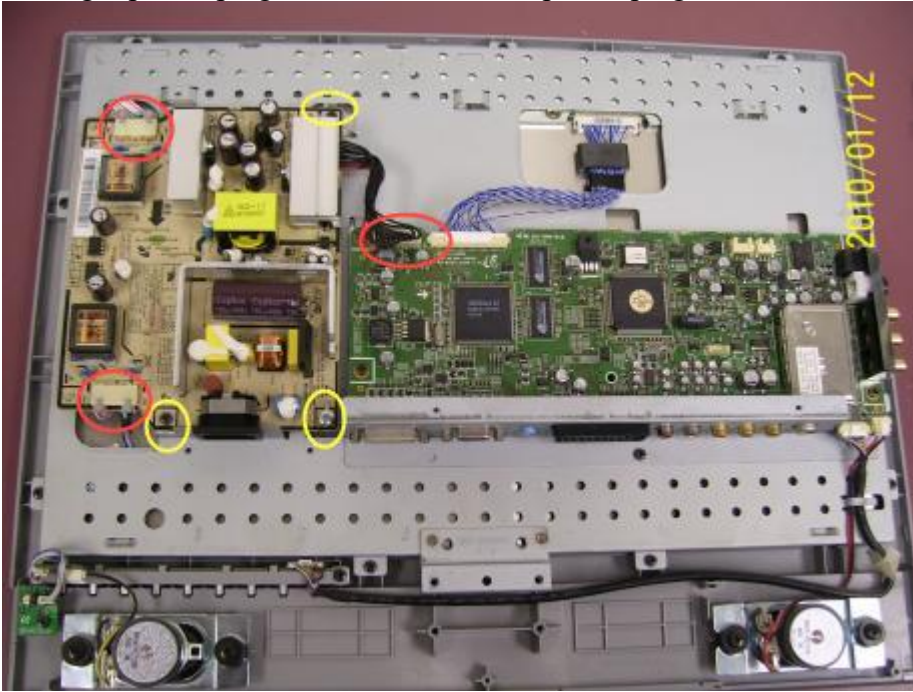


After the back case is removed you will need to unscrew the 5 screws holding the metal shield in place over the power supply and CPU board as show here. After the screws are removed just lift the shield and set it to the side for later re-installation.



With the shield off we can now see the board that we will be working on. Remove the 3 screws holding the power supply board in place they are circled in Yellow. Next disconnect the 2

backlight power plugs and the black CPU power plug as shown circled in Red.



The capacitors you need to replace are circled in the picture on the right. Use solder braid and remove the bad caps and solder in the replacement caps. Be sure to replace them in the proper polarity, you will see a stripe on the side. The stripe is the negative lead. Just reinsert the new caps with the stripe going the same direction. The values and part locations are listed here:

680uf 25v – C316, C315

1000uf 10v- C109, C110

330uf 25v – C113

330uf 10v – C117

820uf 25v – C111, C112



After the parts are replaced just reverse the procedure to reassemble the case. Now apply power and you should have a fully functional monitor again.



If you need a replacement coax connector they are available from Amazon here:
[Samsung Coaxial Connector for Syncmaster Monitor](#)

F T E
^ ~ ~

[\[Translate\]](#)