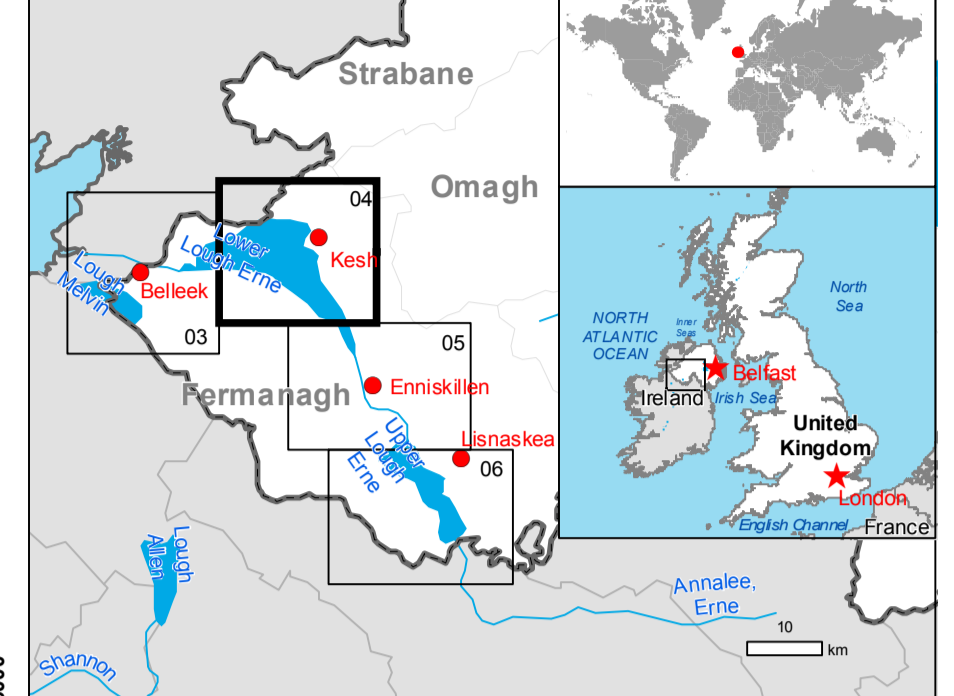




Kesh - UNITED KINGDOM Flood - Pre-event situation Reference Map



Cartographic Information

1:35000 Full color ISO A1, low resolution (100 dpi)



Grid: WGS 1984 UTM Zone 29N map coordinate system
Tick marks: WGS 84 geographical coordinate system

Legend

General Information	Transportation	Hydrology
Area of Interest	Bridge	River
International Boundary	Primary Road	Lake
Populated Place	Secondary Road	Local Road

Exposure within the AOI

	Unit of measurement		Total in AOI
	No. of inhabitants		
Estimated population			8900
Transportation	Primary roads	km	70
	Secondary roads	km	37.5
	Local roads	km	254
	Bridges	No	38

Map Information

Lough Erne and Lough Neagh rivers in Northern Ireland have recently been at their highest levels since records began, flooding homes, businesses and transportation hubs. While water levels are beginning to decrease, there are still significant challenges to manage existing floods and to begin to plan for recovery.

The present map shows basic topographic features derived from public datasets, refined by means of visual interpretation of pre-event imagery.

Relevant date records

Event	Date	Situation as of	Date
Event	11/01/2016		11/01/2016
Activation	11/01/2016	Map production	12/01/2016

Data Sources

Pre-event image: ESRI World Imagery @ Microsoft (acquired on 07/11/2011, GSD 0.3 m, 0 % cloud coverage).

Base vector layers: OpenStreetMap @ OpenStreetMap contributors, refined by the producer.
Inset maps: JRC 2013, © EuroGeographics, Natural Earth 2012, CCM River DB © EURLC2007, GeoNames 2013.

Population data: LandScan 2010 © UT BATTELLE, LLC
Digital Elevation Model: SRTM 90 m (NASA/USGS)

Disclaimer

Products elaborated in this Copernicus EMS Rapid Mapping activity are realized to the best of our ability, within a very short time frame, optimising the available data and information. All geographic information has limitations due to scale, resolution, date and interpretation of the original sources. No liability concerning the contents or the use thereof is assumed by the producer and by the European Union.

Map produced by GAF AG released by e-GEOS (ODD).

For the latest version of this map and related products visit
<http://emergency.copernicus.eu/mapping/list-of-components/EMSR151>

rapidmapping@ems-copernicus.eu
© European Union

