

Subfamily Hypophloeinae: Key

Key O

Key to the Florida species of *Corticeus* Piller and Mitterpacher (modified from Triplehorn 1990) (underlined terms are defined to the right)

- 1. Elytra (at least apical one-fourth) and pronotum (especially laterally and apically) sparsely clothed with long, erect setae (**Fig. 1**).....
*thoracicus* (Melsheimer) (length 2.5-3.0 mm) (**Fig. 5**)
- 1'. Elytra and pronotum entirely glabrous, or with numerous very short, inconspicuous setae.....2

- 2 (1'). Elytra distinctly punctate-striate with very fine interstitial punctures; pronotum elongate (width 0.7 times length); body length greater than 4.5 mm.....
*tensicollis* Triplehorn (length 5.0-7.5 mm) (**Fig. 4**)
- 2'. Elytra confusedly punctured (pigment spots may give appearance of striae); pronotum subquadrate or only slightly longer than broad (width at least .8 times length); body length seldom exceeding 4.5 mm.....3

- 3 (2'). Pronotum with apical angles acute and strongly produced.....
*parallelus* (Melsheimer) (length 3.0-3.8 mm) (**Fig. 3**)
- 3'. Pronotum with apical angles rounded, angulate or slightly produced.....*glaber* (LeConte) (length 2.9-3.3 mm) (**Fig. 2**)

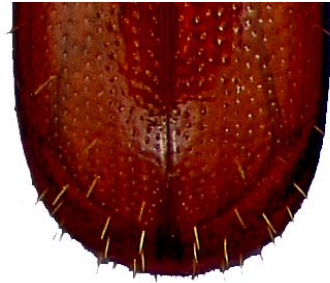


Fig. 1: Setae on apical portion of elytra

Angulate-forming an angle

Elytra-the forewings of beetles

Glabrous-smooth, devoid of pubescence

Pronotum-the upper and dorsal part of the prothorax

Striae-longitudinal depressed lines or furrows, frequently punctured

Subquadrate-not quite square

Subfamily Hypophloeinae: Species Profiles



Fig. 2: *Corticeus glaber* (LeConte)

Length: 2.9-3.3 mm

Habitat: Adults inhabit a number of *Pinus* spp. (especially loblolly)

Comments: Strong association with the bark beetle *Dendroctonus frontalis* (Triplehorn 1990)



Fig. 3: *Corticeus parallelus* (Melsheimer)

Length: 3.0-3.8 mm

Habitat: Adults inhabit a number of *Pinus* spp. (Triplehorn 1990)

Comments: May be associated with bark beetles (Curculionidae)



Fig. 4: *Corticeus tensicollis* Triplehorn

Length: 5.0-7.5 mm

Habitat: ---

Comments: Only known from southern FL in U.S.; Triplehorn (1979) described this species from a specimen taken on Paradise Key, FL; similar species occur Cuba and Puerto Rico



Fig. 5: *Corticeus thoracicus* (Melsheimer)

Length: 2.5-3.0 mm

Habitat: Adults inhabit a number of deciduous and coniferous tree spp. (Triplehorn 1990)

Comments: 1 of 3 N.A. *Corticeus* spp. to have conspicuous dorsal setae (see Fig. 1)