

East Sandusky Bay Natural Resource Management Plan

Tara Kauffman, Natural Resources Manager
Brad Phillips, Environmental Projects Coordinator
(April 2012-Updated February 2020)

Erie MetroParks mission is to conserve natural resources while connecting the community with nature through education and exploration.

The East Sandusky Bay MetroPark, which is a collection of smaller MetroParks owned by Erie MetroParks, contains most of the east part of Sandusky Bay. The total acreage of this park is 1,370. Historically this bay has fluctuated greatly in height and was at times farmed. It is currently a mixture of shallows and mudflats. It is one of the largest remaining naturally functioning freshwater coastal marshes in Ohio. Rare plants, including Bushy Cinquefoil (*Potentilla paradoxa*) and Wapato (*Sagittaria cuneata*), have been found here in the Palustrine Silt Plant Community, which emerge from the seed bank when the levels of Lake Erie fall. The smaller MetroParks which front on the bay include Community Foundation Preserve at Eagle Point, Joseph Steinen Wildlife Area, Putnam Marsh Nature Preserve, Wyandot Wetland Meadows Preserve and Barnes Addition. All of these parks are located along state route 6 in Huron Township. There is also a small parcel called the Barnyard which is included in this park and located off of Perkins Ave. The purpose and protection of these parks is to preserve, in perpetuity, high quality Lake Erie coastal wetland resources. The rare habitat of the marsh provides critical food and sanctuary for numerous species. Located at the intersection of two primary migratory routes, the Mississippi and Atlantic flyways, the marsh is an important stopping site for migratory birds as they make their long trek across Lake Erie in the spring and fall. It's an excellent site for year round bird watching and is renowned for its abundant waterfowl. East Sandusky Bay is featured as part of the Lake Erie Birding Trail.

Features and Resources

Community Foundation Preserve at Eagle Point covers 88 acres. The park contains a mature oak and honey locust woodland with 15 acres of former farm fields planted to a warm-season prairie meadow mixture. There is an observation deck at the mouth of Plum Brook Creek that overlooks the bay. The mouth and estuary of Plum Brook are shared between Eagle Point/Stockdale Arboretum and Steinen Wildlife Area to the east. The Pete Weiland Wetland and Bogert Marsh extend from Plum Brook into the property. Eagle point has a canoe/kayak launching area as part of the East Sandusky Bay Water Trail. The 15 mile water trail is designated as the first Ohio water trail on a Lake Erie Bay.

The property contains 2 houses, a coop/shelter and a program cottage. There is an area designated for primitive group camping on the Stockdale Arboretum side to the east along with the Enchanted Cottage. (*See attachment tree and shrub key*) to view the different species planted at Stockdale Arboretum. A trail system is established throughout the meadows and wooded area. A portion of the trail is connected to a piece of land to the west Owned by the City of Sandusky called the "Gateway Preserve" (*see attachment*

East Sandusky Bay Natural Resource Management Plan

Tara Kauffman, Natural Resources Manager
Brad Phillips, Environmental Projects Coordinator
(April 2012-Updated February 2020)

property map). The Erie Metro Live Steamers have established a mini railroad system within the south meadow.

Joseph Steinen Wildlife Area (SWA) is a 155 acre park managed for wildlife, especially game animals. SWA consists of 3 parcels, designated A, B and C (*see attachment property map*). Parcel A has planted prairie meadows along the roadside, and wildlife food plots containing both annual and perennial species in the interior to enhance wildlife habitat values. Galloway pond is located on the far north side, and there is also a trail system established on the property. Youth hunting programs are emphasized on this parcel and every year lottery drawings take place for upland game hunting, deer archery hunting and trapping. The Barnyard (part of Parcel A), which is south of St. Rt. 6 off of Perkins Ave is home to the Erie County Ohio Bicentennial Barn. The Barnyard is maintained by a volunteer who takes care of the animals and also offers programs for the public to learn about farm animals.

Parcel B was formally the life estate held by Gilbert Steinen but as of 2018 it is now owned and managed by Erie MetroParks. The life estate includes the Steinen family house (now burned down in 2018), a clubhouse for the West Huron Youth Club, a barn and a pond. Barnes Nursery had leased a portion of Parcels B and C for the past 20 years for the production of nursery stock. As of March 2012 this lease expired. Much nursery stock remains in the ground. Management decisions are now made by Erie MetroParks, with input from the West Huron Youth Club.

Putnam Marsh Nature Preserve is 955 acres which is mostly the open water portion of East Sandusky Bay (*see attachment property map*). The bay is shallow, and has been a hemi marsh in the past during lower Lake Erie levels. The upland area of Putnam is a mix of oak forest ("Galloway Woods") and successional meadow/thicket. A wetland swale containing Dildine ditch crosses Steinen's and the Putnam uplands, and flows under the Cedar Point Chaussee into Sheldon Marsh. Parts are seasonally hunted, by special permit, in a program co-managed by Erie MetroParks and the Ohio Division of Wildlife. Buoys have been placed along a section of Putnam to discourage power boats/jets skis from affecting the wetland vegetation. Currently there is no parking area, drinking water or restrooms available at this site.

Wyandot Wetland Meadows Preserve encompasses 84 acres. The main features at Wyandot are the 60 acre warm season grass meadow and the marshy wetland edge. Trails are established throughout the meadow and lead onto the Barnes Addition property. The 74 acre **Barnes Addition** is east of Wyandot and was purchased in 2012 to continue preserving wetland habitats including high quality category 3 coastal wetlands (*see attachment property map*). Barnes contains several different wetland communities including Palustrine Forested Wetland, Palustrine Scrub/Shrub Wetland, Palustrine Emergent Wetland, Lacustrine

East Sandusky Bay Natural Resource Management Plan

Tara Kauffman, Natural Resources Manager
Brad Phillips, Environmental Projects Coordinator
(April 2012-Updated February 2020)

Emergent Wetland and open water. In addition to wetland habitat and open water, the site supports terrestrial communities including Grassland/Herbaceous, Deciduous Forest, Mixed Forest Scrub/Shrub and Developed/Disturbed Areas. The Palustrine Silt Plant Community is presently dormant, but during low water levels, the seed bank germinates and this community flourishes along the lake bed. Bushy Cinquefoil (*Potentilla paradoxa*) (State Endangered) was noted on site just south of the silt plant community (refer to WRRSP Management Plan). On the property a large drainage canal has been created to move water to a pump-house which delivers water to the nearby Barnes Nursery. To the east is Sheldon Marsh State Nature Preserve. Parking is at the Wyandot Wetland Meadows Preserve parking lot and the trail system leads you onto the Barnes Addition property.

Management Strategies

East Sandusky Bay MetroPark

Controlled burns should be conducted in the meadows on a one to two year cycle to prevent woody growth from overtaking the area, and to encourage fire adapted prairie plants to thrive (*see attachment burn area maps*). Perimeter fire lanes must be maintained by mowing to insure a safe burn. Burns in these parks must be conducted with steady south or southwest winds, to avoid smoke interfering with traffic on Cleveland Road. In years when burning is not successful, other strategies such as mowing at the end of June and/or chemical control of woody vegetation may need to be implemented.

Common Reed Grass (*Phragmites australis*) is present in great abundance all along the shoreline. Erie MetroParks utilizes any grant funds made available by Cooperative Weed Management and Ohio Division of Wildlife to help combat the issue. Plum Brook has had a high focus on controlling the Phragmites. Aerial and ground spraying has been done along with mashing down of the phrag with a marsh master. Monitoring will be necessary to determine success and to decide which areas will need follow up treatment. Burning off the prior year's growth of the Common Reed is a useful strategy, before spraying to facilitate good coverage, and after spraying to remove the residue and open the area for recolonization by native species.

Most of the ash trees throughout the park have succumbed to emerald ash borer. Any dead and or dying ash trees that pose a threat to the public will be removed.

2 wood duck boxes can be found within East Sandusky Bay MetroPark (*see attachment wood duck box map*). Nest boxes should be cleaned out every year and be replaced with 4 inches of wood shavings (not sawdust) in the bottom of the box. The best time to clean out boxes is during winter or early spring

East Sandusky Bay Natural Resource Management Plan

Tara Kauffman, Natural Resources Manager
Brad Phillips, Environmental Projects Coordinator
(April 2012-Updated February 2020)

before hens return from wintering areas and begin prospecting for nest sites. Boxes should be inspected every year for need of repairs or replacement. When putting up wood duck boxes ensure that they are 6-8 feet above the water's surface or in woodland habitat within ½ mile of lakes, ponds, marshes or rivers.

Approximately 494 species of vascular plants have been reported throughout East Sandusky Bay. This includes species planted for restoration purposes and for wildlife habitat. Each individual park holds between 200 and 300 species. The Barnes Addition also contains numerous remnant nursery species, of which 26 have been identified to date (*see attachments plant list thru 2016 and ornamental plant list*). Over 176 species of birds have been recorded (*see attachment birds thru 2016*) and about 21 vertebrate species (*see attachment vertebrates thru 2011*).

Community Foundation Preserve at Eagle Point

The preserve is home to American Bald Eagles, a once state threatened species and a significant natural resource for Ohio. When the first settlers came to the Ohio country, bald eagles were common along the shores of Lake Erie. During the decline and subsequent rebound of the past 20 years, the Eagle Point area has provided a native stronghold for an active eagle nest. Erie MetroParks regulates public access during the nesting season, following state and federal guidelines, to help protect the breeding habitat of the eagles. During sensitive nesting time, the eagles can be easily disturbed by humans. When the Preserve is open to public use, visitors are requested to stay on marked trails or avoid trails closed due to nesting activity to avoid disturbing the eagles.

Joseph Steinen Wildlife Area

Joseph Steinen Wildlife Area "A" is directly to the east of Eagle Point, and has potential to be in the radius of nesting bald eagles. Trails will be closed where necessary to abide by state and federal regulations.

Past plantings of wildlife food plots have included Sunflower, Sorghum, Buckwheat, Corn, Soybeans, and Clover mix, as well as warm season grass mix for perennial cover. Food plots are usually planted annually.

The land clearing project at Steinen Life-Estate property parcel "B" began in 2018. 7 acres of nursery stock were cleared, root raked, and seeded with Annual Rye. In 2019 the 7 acres was seeded with a bird, buck, and brood mix and a cool season grass mix. Also, the thick understory was cleared out around the Locust trees. The site will be monitored to see if additional seeding is necessary in addition to controlling any woody growth.

East Sandusky Bay Natural Resource Management Plan

Tara Kauffman, Natural Resources Manager
Brad Phillips, Environmental Projects Coordinator
(April 2012-Updated February 2020)

Putnam Marsh Nature Preserve

Dildine Ditch and wetland swale should be maintained and cleared of debris as needed to maintain flow and reduce flooding. The upland portion which is currently in scrub/shrub should be maintained in this type of habitat, as it is valuable for certain nesting bird species. This can be achieved by not allowing closed canopy species to dominate the site.

Wyandot Wetland Meadows Preserve

The tall grass is well established and can be maintained by periodic burning. Cottonwood saplings can be controlled by the cut and treat herbicide method. Species diversity should perhaps be increased by inter-seeding and controlled disturbance of small areas.

Barnes Addition

Disturbance has exacerbated the occurrence of invasive species on the property especially Common Reed, Narrow-leafed Cattail, Purple Loosestrife, and Japanese Honeysuckle. All wetlands on the property will be preserved to protect existing water quality and allow natural restoration of historically degraded areas. Future management efforts will focus on controlling the invasive species and allowing the majority of the site to progress through natural succession.

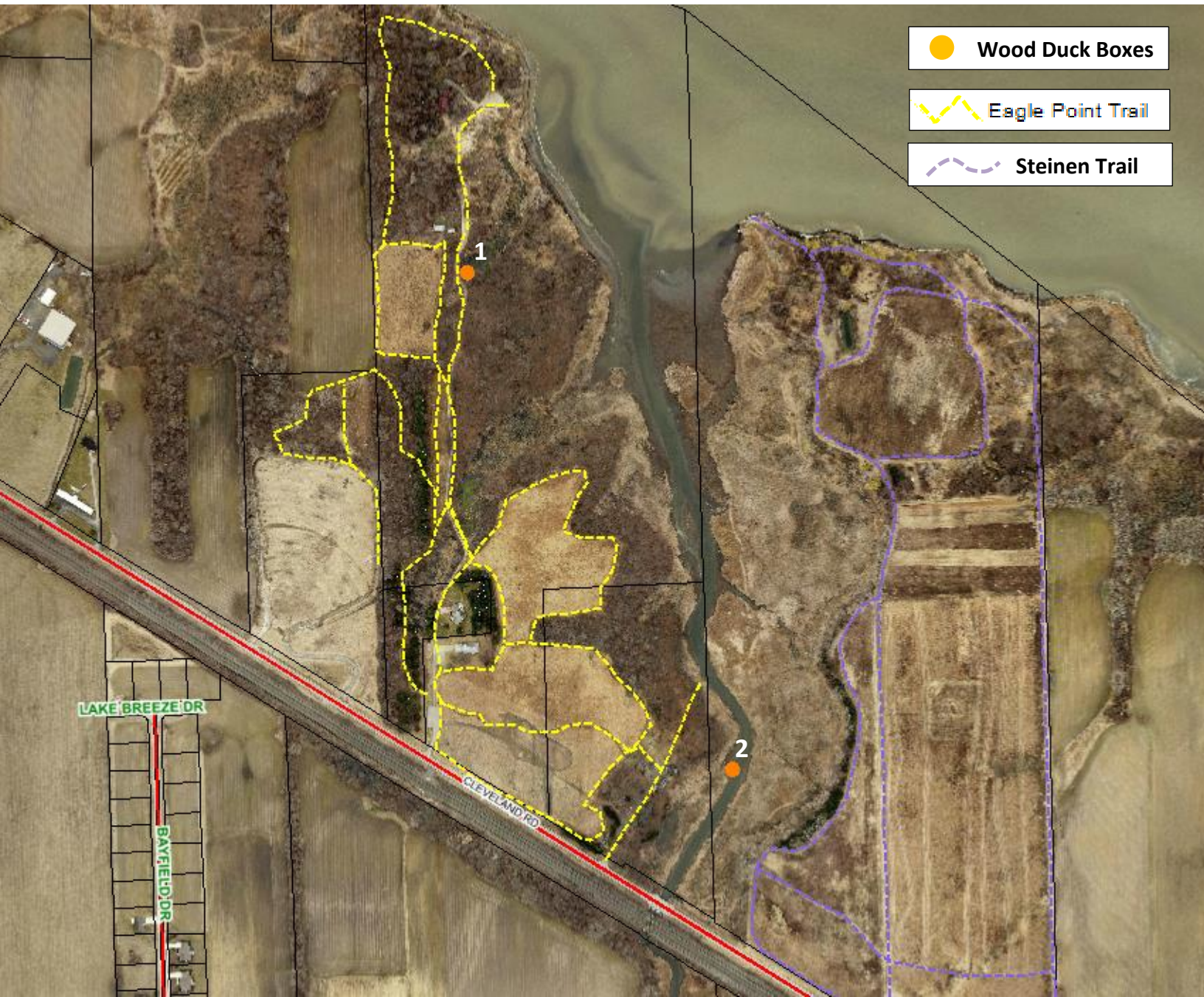
Native grasses and sedges were planted in 2012 by outside contractors on disturbed bare areas, along with erosion control and ditch/water maintenance. Eight small groups of native trees were interspersed in these areas as well. Regular mowing will be done to the seeded areas to maintain a 10inch growth height. Chemical control will also be done to control invasive species and any clover/thistle that may pose a threat to the native grasses that were planted. Prescribed burning has taken place on the east meadow and may be used on the west meadow once enough fuel is developed to help the successes of the plantings. Sumac and Viburnum was planted on a berm and was mowed around during the initial growing stages to reduce competition from other vegetation. A low impact trail system has been established leading from Wyandot onto the Barnes Addition side. An observation deck and a removable toilet were placed on the property and an interpretive kiosk may be developed in the future (refer to WRRSP Management Plan).

An access easement agreement has been granted to allow Erie MetroParks to drive vehicles/equipment through Barnes Nursery off of Cleveland Road for maintenance on the Barnes Addition.

East Sandusky Bay Putnam Marsh



East Sandusky Bay MetroPark



- Wood Duck Boxes
- Eagle Point Trail
- Steinen Trail

Box1	Bogert Marsh at Eagle Point
Box2	Plum Brook Creek at Stockdale Arboretum

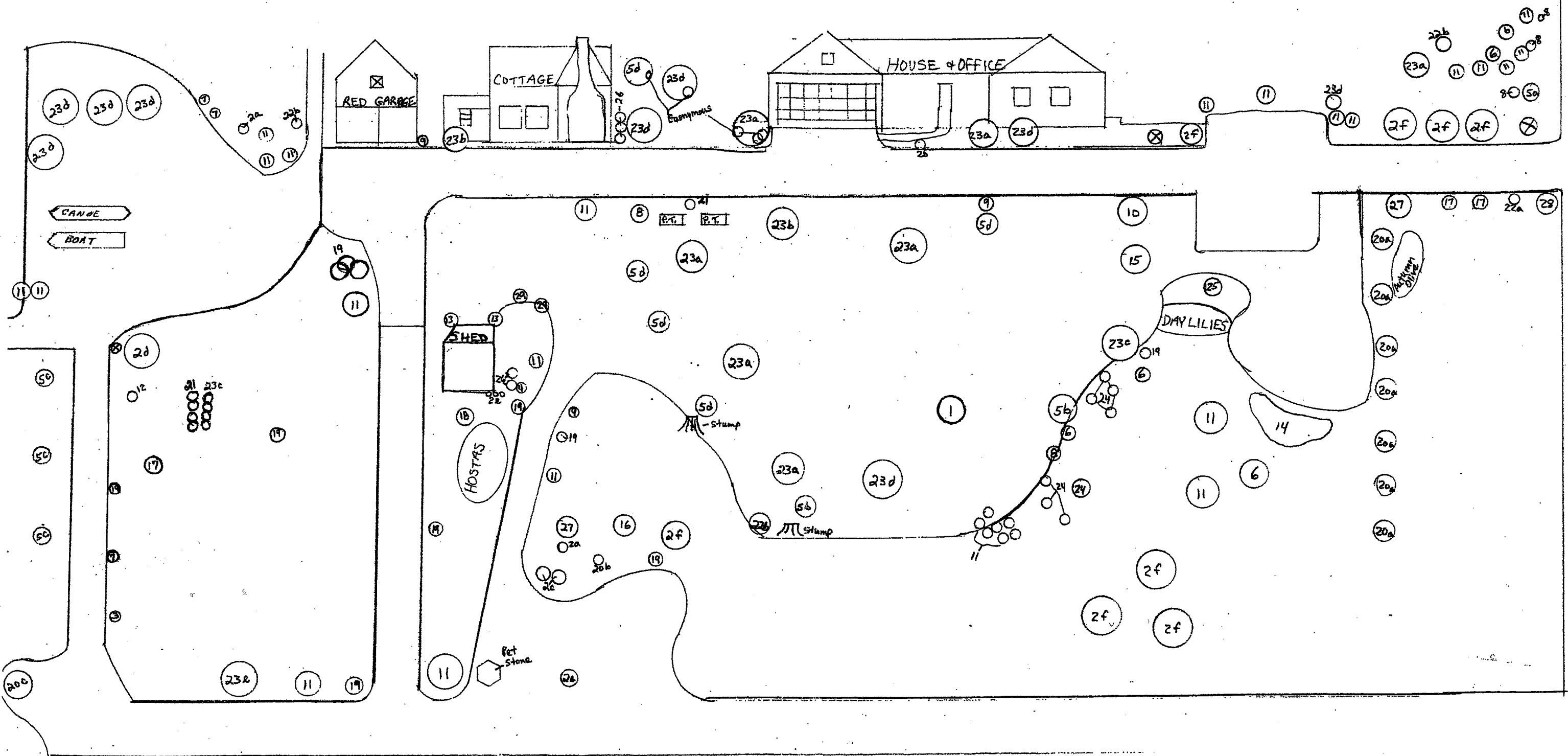
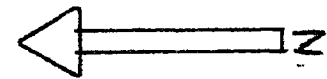
**Community
Foundation
Preserve at
Eagle Point**



City of Sandusky
Property

Community Foundation Preserve Burn Areas





FIELD

"MIKE" STOCKDALE
 ARBORETUM CFP
 EMP
 Note: Not to Scale
 Charlene Margashak 10-04-04

Cleveland Rd. U.S. RT. 6

Erie MetroParks
East Sandusky Bay Preserve MetroPark
Community Foundation Preserve at Eagle Point
"Mike" Stockdale Arboretum
Tree & Shrub Key

1. *Abies concolor* – White Fir (Concolor)
- 2a. *Acer negundo* – Ash-leaved Maple, Box Elder
- 2b. *Acer palmatum* – Japanese Maple
- 2c. *Acer pseudoplatanus* – Planetree Maple, Sycamore Maple
- 2d. *Acer rubrum* – Red Maple
- 2e. *Acer saccharinum* – Silver Maple
- 2f. *Acer saccharum* – Sugar Maple
3. *Aesculus glabra* – Ohio Buckeye
4. *Buxus sempervirens* – Common Boxwood
- 5a. *Carya cordiformis* – Bitternut Hickory
- 5b. *Carya glabra* – Pignut Hickory
- 5c. *Carya illinoensis* – Pecan
- 5d. *Carya ovata* – Shagbark Hickory
6. *Celtis occidentalis* – Common Hackberry
7. *Cornus racemosa* – Gray Dogwood
8. *Crataegus* sp. – Hawthorn
9. *Euonymus alatus* – Winged Euonymus
10. *Fagus grandifolia* – American Beech
11. *Fraxinus americana* – White Ash
12. *Gymnocladus dioica* – Kentucky Coffeetree
13. *Ilex opaca* – American Holly
14. *Ligustrum* sp. – Privet
15. *Liriodendron tulipifera* – Tuliptree
16. *Maclura pomifera* – Osage-orange
17. *Malus pumila* – Apple
18. *Malus* sp. – Crabapple
19. *Morus alba* – Common Mulberry
- 20a. *Picea abies* – Norway Spruce
- 20b. *Picea glauca* – White Spruce
- 20c. *Picea pungens* var. *glauca* – Colorado Blue Spruce
21. *Pinus nigra* – Austrian Pine
- 22a. *Prunus* sp. – Cherry
- 22b. *Prunus serotina* – Black Cherry
- 23a. *Quercus alba* – White Oak
- 23b. *Quercus macrocarpa* – Bur Oak
- 23c. *Quercus palustris* – Pin Oak
- 23d. *Quercus rubra* – Red Oak
- 23e. *Quercus velutina* – Black Oak
24. *Sassafras albidum* – Common Sassafras
25. *Syringa vulgaris* – Common Lilac
26. *Taxus* sp. – Yew
27. *Tilia americana* – Basswood
28. *Ulmus americana* – American Elm
29. *Viburnum* sp. – Viburnum

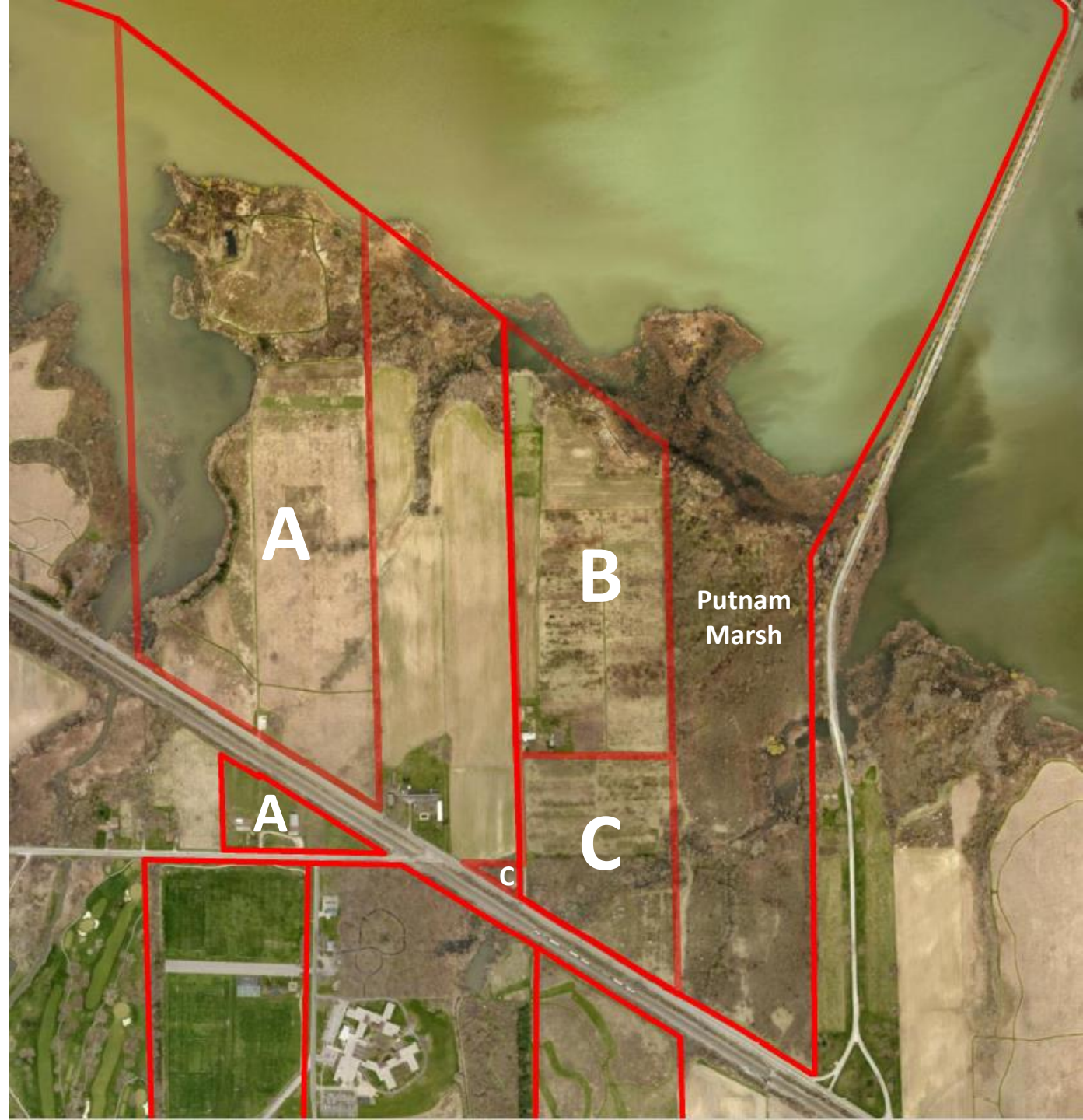
**Wyandot Wetland
Meadows Preserve
& Barnes Addition**



Wyandot & Barnes Burn Areas



**Joseph Steinen
Wildlife Area**



Steinen Wildlife Area Burn Areas





PLANT List, East Sandusky Bay Sites thru 2016

Thursday, March 23, 2017

Code	Common Name	SciName	Origin	ESB	CFP	SWA	PMP	WMP	Barnes	Listed	Invasive
L V											
	Fern, Sensitive	Onoclea sensibilis L.	N	X	X		X	X	X		
	Horsetail, Field	Equisetum arvense L.	N	X	X	X	X	X	X		
	Scouring-rush, Tall	Equisetum hyemale L.	N	X?		X?					
3				3	2	2	2	2	2	0	0
P											
	Agalinis , Slender	Agalinis tenuifolia	N	X				X			
	Agrimony, Common	Agrimonia gryposepala Wallr.	N	X	X	X				X	
	Agrimony, Small-flowered	Agrimonia parviflora Aiton	N	X						X	
	Alfalfa	Medicago sativa L.	A	X		X		X			
	Ammannia, Sessile-fruited	Ammannia robusta Heer&Regel.	N	X	X	X	X			X	
	Anemone, Canada	Anemone canadensis L.	N	X		X		X		X	
	Anemone, Tall (Thimbleweed)	Anemone virginiana L.	N	X	X?						
	Anemone, Wood	Anemone quinquefolia L.	N	X	X		X				
	Arrowhead, Common	Sagittaria latifolia Willd.	N	X	X		X			X	
	Arrowhead, Stiff	Sagittaria rigida Pursh	N	X			Xjb				P
	Asparagus, Garden	Asparagus officinalis L.	A	pl		pl					
	Aster, Arrow-leaved	Symphyotrichum urophyllum (Lindl.) G.L. Nesom [Aster saggitifolius Wedem ex Willd.]	N	X	X?						
	Aster, Awl	Symphyotrichum pilosum (Willd.) G.L. Nesom [Aster p..us Willd.]	N	X	X	X	X?	X			
	Aster, Calico	Symphyotrichum lateriflorum (L.) [Aster l..us (L.) Britt.]	N	X	X	X				X?	
	Aster, Eastern Lined	Symphyotrichum lanceolatum (L.) [Aster l..us Willd.[A.simplex]	N	X	X						

Code	Common Name	SciName	Origin	ESB	CFP	SWA	PMP	WMP	Barnes	Listed	Invasive
	Aster, Heath	Symphyotrichum ericoides (L.) G.L. Nesom [Aster e.. L.]	N	X		X		X			
	Aster, New England	Symphyotrichum novae-angliae (L.) G.L. Nesom [Aster n.. L.]	N	X	X + re	X + re	X	re		X	
	Aster, Small-headed	Symphyotrichum raceosum (Elliot) G.L. Nesom [Aster r..us Elliott.[A.vimineus]]	N	X	X						
	Avens, Spring	Geum vernum (Raf.) T & G.	N	X	X?	X	X	X		X	
	Avens, White	Geum canadense Jacq.	N	X	X	X	X	X		X	
	Beard-tongue, Foxglove	Penstemon digitalis Nutt. ex Simms	N	re				re			
	Bedstraw, Cleavers	Galium aparine L.	N	X	X	X	X	X			
	Bedstraw, Stiff Marsh	Galium obtusum Bigel.	N	X?			X?				
	Bedstraw, Sweet-scented	Galium triflorum Michx.	N	X	X						
	Bedstraw, White	Galium mollugo L.	A	X				X		X	
	Beggar-ticks, a	Bidens sp	N	X						X	
	Beggar-ticks, Devils	Bidens frondosa L.	N	X	X	X	X?				
	Beggar-ticks, Purple-stemmed	Bidens tripartita L.	A	X	X	X	X				
	Bergamot, Wild	Monarda fistulosa L.	N	re	re	re		re			
	Bindweed, Black	Polygonum convolvulus L.	A	X		X					
	Bindweed, Field	Convolvulus arvensis L.	A	X		X		X		X	
	Bindweed, Hedge	Calystegia sepium (L) R.Br.	N	X	X	X	X	X		X	
	Bird'sfoot-trefoil	Lotus corniculatus L.	A	X						X	
	Black-eyed Susan	Rudbeckia hirta L.	N	re	re	re		re		X	
	Blazingstar, Dense	Liatris spicata (L.) Willd	N	re	re	re		re			
	Bloodroot	Sanguinaria canadensis L.	N	X			X				
	Blue-eyed-Grass, Common	Sisyrinchium angustifolium Mill.	N	X				X		X	
	Boneset, Common	Eupatorium perfoliatum L.	N	X	X	X	X	X		X	
	Boneset, Upland	Eupatorium sessilifolium L.	N	X		X?					

Code	Common Name	SciName	Origin	ESB	CFP	SWA	PMP	WMP	Barnes	Listed	Invasive
	Buckwheat, Climbing False	<i>Polygonum scandens</i> L.	N	X	X	X				X	
	Bugleweed, Virginia	<i>Lycopus virginicus</i> L.	N	X?	X?		X?				
	Bulrush, Dark-green	<i>Scirpus atrovirens</i> Willd.	N	X						X	
	Bulrush, Drooping	<i>Scirpus pendulus</i> Muhl. [<i>S. lineatus</i>]	N	X?		X?					
	Bulrush, Leafy	<i>Scirpus polyphyllus</i> Vahl	N	X	X	X	X			X?	
	Bulrush, River	<i>Bolboschoenus fluviatilis</i> (Torr.) J. Sojak [<i>Scirpus</i> f..]	N	X	X		X	X		A L	
	Bulrush, Soft-stemmed	<i>Schoenoplectus tabernaemontani</i> (C.C.Gmel.) Palla [<i>Scirpus validus</i>]	N	X	X		X	X		X	
	Burdock, Common	<i>Arctium minus</i> Bernh.	A	X	X	X		X		X	
	Bur-reed, Common	<i>Sparganium eurycarpum</i> Engelm.	N	X	X		X				
	Bush-clover, Round-headed	<i>Lespedeza capitata</i>	N	X				X			
	Butter-and-Eggs	<i>Linaria vulgaris</i> Miller	A	X		X		R		X	
	Buttercup, Creeping?	<i>Ranunculus repens</i> L.	A	X						X	
	Buttercup, Kidney-leaved	<i>Ranunculus abortivus</i> L.	N	X	X	X		X			
	Buttercup, Swamp	<i>Ranunculus hispidus</i> Michx var <i>nitidus</i>	N	X?	X		X?				
	Butterfly-weed	<i>Asclepias tuberosa</i> L.	N	re	re	re					
	Carpet-weed	<i>Mollugo verticillata</i> L.	A	X	X	X					
	Carrion-flower	<i>Smilax herbacea</i> L.	N	X?	X?						
	Carrot, Wild (Queen Anne's Lace)	<i>Daucus carota</i> L.	A	X	X	X	X	X		X	
	Catnip	<i>Nepeta cataria</i> L.	A	X	X	X		X		X	
	Cattail, hybrid	<i>Typha x glauca</i> Godr.	A	X						X?	X
	Cat-tail, Narrow-leaved	<i>Typha angustifolia</i> L.	A	X	X	X	X			X	X
	Celandine, Lesser	<i>Ranunculus ficaria</i> L.	A	X	R						X
	Chamomile, Corn	<i>Anthemis cotula</i> L.	A	X				X			
	Chamomile, False? fragrant	<i>Matricaria recutita</i> L.? (<i>M. chamomilla</i>)	A	X						X	
	Chamomile, Wild	<i>Anthemis</i> sp.	A	X						X?	

Code	Common Name	SciName	Origin	ESB	CFP	SWA	PMP	WMP	Barnes	Listed	Invasive
	Chickweed, Common	<i>Stellaria media</i> (L.) Vill.	A	X	X	X		X			
	Chickweed, Common Mouse-eared	<i>Cerastium fontanum</i> Baumg.[<i>C.vulgatum</i>]	A	X	X	X	X	X	X		
	Chickweed, Jagged	<i>Holosteum umbellatum</i> L.	A	X	X						
	Chicory	<i>Cichorium intybus</i> L.	A	X	X	X	X	X		X	
	Cinquefoil, Common	<i>Potentilla simplex</i> Michx.	N	X			X				
	Cinquefoil, Rough	<i>Potentilla norvegica</i> L.	N	X?	X	X				X	
	Cinquefoil, Silvery (Silverweed)	<i>Argentina anserina</i> (L.) Rydb. [<i>Potentilla a.. L.</i>]	N	X				R L		X	
	Clearweed, Common	<i>Pilea pumila</i> (L) A.Gray	N	X	X		X				
	Clover, Alsike	<i>Trifolium hybridum</i> L.	A	X	X	X	X	X		X	
	Clover, Low Hop-	<i>Trifolium campestre</i> Schreber	A	X						X	
	Clover, Red	<i>Trifolium pratense</i> L.	A	X	X	X	X	X		X	
	Clover, White	<i>Trifolium repens</i> L.	A	X	X	X		X		X	
	Cocklebur	<i>Xanthium strumarium</i> L.	N	X	X	X	X	X		X	
	Coltsfoot	<i>Tussilago farfara</i> L.	A	X	X						
	Coneflower, Cut-leaved	<i>Rudbeckia laciniata</i> L.	N	X			X				
	Coneflower, Gray-headed	<i>Ratibida pinnata</i> (Vent) Barnhart	N	re	re	re		re		X	
	Coneflower, Purple	<i>Echinacea purpurea</i> (L.) Moench	Z	X				pl R			
	Coneflower, Three-lobed	<i>Rudbeckia triloba</i> L.	N	re				re			
	Coreopsis, Tall	<i>Coreopsis tripteris</i> L.	N	re	re	re		re			
	Corn-salad	<i>Valerianella</i> sp	N	X						X	
	Crane's-bill, Carolina	<i>Geranium carolinianum</i> L.	N	X		X		X		X	
	Cress, Bending-bitter	<i>Cardamine flexuosa</i> With.	A	X	X			X			
	Cress, Common Winter	<i>Barbarea vulgaris</i> R.Br.	A	X	X	X	X	X		C L	
	Cress, Common Yellow	<i>Rorippa palustris</i> (L) Besser	N	X	X?	X	X	X			
	Cress, Cow (Field Peppergrass)	<i>Lepidum campestre</i> (L.) R.Br.	N	X						X	

Code	Common Name	SciName	Origin	ESB	CFP	SWA	PMP	WMP	Barnes	Listed	Invasive
	Cress, Hoary Bitter	Cardamine hirsuta L.	A	X	X	X	X	X	X		
	Cress, Mouse-ear	Arabidopsis thaliana (L.) Heynh.	A	X	X	X		X	X		
	Cress, Pennsylvania Bitter	Cardamine pennsylvanica Muhl.	N	X	X	X	X	X			
	Crowfoot, Cursed	Ranunculus sceleratus L.	N	X	X	X	X	X			X
	Crown-vetch	Coronilla varia L.	A	X							X
	Cucumber, Wild	Echinocystis lobata (Michx.) T.& G.	N	X	X	X		X			
	Cudweed, Low	Gnaphalium uliginosum L.	N	X	X	X					
	Culver's-root	Veronicastrum virginium (L.) Farw.	N	re	re	re		re			
	Daffodil	Narcissus pseudonarcissus L.	A	X							X
	Dame's Rocket	Hesperis matronalis L.	A	X	X	X					X
	Dandelion, Common	Taraxacum officinale Weber	A	X	X	X	X	X	X		X
	Dayflower, Common	Commelina communis L.	A	X	X						
	Day-lily, Orange	Hemerocallis fulva L.	N	X							X
	Dead-nettle, Purple	Lamium purpureum L.	A	X		X		X			X
	Ditch-Stonecrop	Penthorum sedoides L.	N	X	X	X	X	X			
	Dock, Curled	Rumex crispus L.	A	X	X	X	X	X			X
	Dock, Swamp	Rumex verticillatus L..	N	X	X	X	X				
	Dodder, Common	Cuscuta gronovii Willd.	N	X	X	X	X				
	Dogbane, Indian-Hemp	Apocynum cannabinum L.	N	X	X	X	X	X			X
	Duckweed, Greater	Spirodela polyrhiza (L.) Schleid.	N	X							X
	Duckweed, Lesser	Lemna minor L.	N	X	X		X	X			
	Dutchman's-Breeches	Dicentra cucullaria (L.) Bernh.	N	X	X	X	X				
	Evening-primrose, Common	Oenothera biennis L.	N	X	X	X	X	X			X
	False Mermaid	Floerkea proserpinacoides Willd.	N	X	X	X	X				X
	False Pimpernel	Lindernia dubia (L.) Pennell.	N	X	X	X					
	Fawn-lily, Yellow	Erythronium americanum Ker.	N	X	X		X				x?

Code	Common Name	SciName	Origin	ESB	CFP	SWA	PMP	WMP	Barnes	Listed	Invasive
	Figwort, Maryland	Scrophularia marilandica L.	N	X	X	X	X				
	Fleabane, a Daisy	Erigeron sp.	N	X			X			X	
	Fleabane, Daisy (toothy)	Erigeron annuus (L) Pers.	N	X				X			
	Fleabane, Philadelphia	Erigeron philadelphicus L.	N	X	X	X		X		X	
	Fleabane, Rough	Erigeron strigosus Muhl. ex Willd.	N	X	X	X		X			
	Flowering-rush	Butomus umbellatus L	A	X	A L	A L				X?	X
	Flower-of-an-hour	Hibiscus trionum L.	A	X	X			X		X	
	Fog-fruit	Phyla lanceolata (Michx.) Greene	N	X	X						
	Forget-me-not, Spring	Myosotis verna Nutt.	N	X	X						
	Forget-me-not, True	Myosotis scorpioides L.	A	X?	X?						
	Four-o-clock, Wild	Mirabilis nyctaginea (Michx.) MacMill.	A	X				R L			
	Garlic, Field	Allium vineale L.	A	X	X	X	X			X	
	Garlic, Wild	Allium canadense L.	N	X			X				
	Geranium, Wild	Geranium maculatum L.	N	X			X	X		U	
	Germander, American	Teucrium canadense L.	N	X	X					X	
	Giant-Hyssop, Yellow	Agastache nepetoides (L.) Ktze.	N	X		X	X?				
	Goats-beard, Field	Tragopogon dubius Scop.	A	X				X			
	Goats-beard, Yellow	Tragopogon pratensis L.	A	X	X			X			
	Goldenrod, Canada (+Tall)	Solidago canadensis L.	N	X	X	X	X	X		X	
	Goldenrod, Flat-topped	Euthamia graminifolia (L.) Nutt.	N	X	X	X	X	X		X	
	Goldenrod, Great Lakes	Euthamia gymnospermoides Greene [E. remota Greene]	N	X?	X	X?		X?			T
	Goldenrod, Smooth	Solidago gigantea Aiton	N	X?				X?			
	Goldenrod, Stiff	Oligoneuron rigidum (L.) Small var rigidum [Solidago rigida L.]	N	re	re	re		re			
	Grass, a Panic	Panicum sp.	N	X		X					
	Grass, Barnyard	Echinochloa crus-galli (L) Beauv.	N	X	X	X	X			X	

Code	Common Name	SciName	Origin	ESB	CFP	SWA	PMP	WMP	Barnes	Listed	Invasive
	Grass, Barnyard	Echinochloa muricata (P.Beauv.) Fern.	N	X	X					X	
	Grass, Big Bluestem	Andropogon gerardi Vitman.	N	re	re	re		re	re		
	Grass, Bluejoint	Calamagrostis canadensis (Michx.) P.Beauv	N	X				X			
	Grass, Brome, non downy type	Bromus sp	u	X	X	X		X	X		
	Grass, Canada Blue	Poa compressa L.	A	X?	X	X?		X			
	Grass, Canada Wild Rye	Elymus canadensis L.	N	re		re		re	re		
	Grass, Carolina Foxtail	Alopecurus carolinianus Walt.	N	X	X	X					
	Grass, Common Broom-sedge	Andropogon virginicus L.	N	X						X	
	Grass, Common Reed	Phragmites australis (Cav.) Trin. ex Steudel	A	X	X	X	X	X	C W		X
	Grass, Creeping Love	Eragrostis hypnoides (Lam.) BSP	N	X?					X?		
	Grass, Deer's-tongue	Panicum clandestinum L.	N	X		X					
	Grass, Downy Brome	Bromus tectorum L.	A	X	X	X?		X?	X?		
	Grass, Dropseed	Sporobolus sp.	N	X		X?					
	Grass, Eulalia	Miscanthus sinensis Anderson	A	X					X		X
	Grass, Fall Panic	Panicum dichotomiflorum Michx.	N	X?	X?	X		X			
	Grass, Giant Foxtail	Setaria faberi Herrm.	A	X	X	X	X	X	X		
	Grass, Goose	Eleusine indica (L.) Gaertn.	A	X	X	X					
	Grass, Hairy Crab	Digitaria sanguinalis (L.) Scop.	A	X		X					
	Grass, Indian	Sorghastrum nutans (L.) Nash	N	re	re	re		re	X		
	Grass, Kentucky Blue	Poa pratensis L.	Z	X	X	X	X		X?		
	Grass, Little Bluestem	Schizachyrium scoparium (Michx.) Nees.	N	X		X			X		
	Grass, Love	Eragrostis sp	u	X	X	X		?			
	Grass, Meadow Fescue?	Lolium pratense (Huds.) Darbyshire [Festuca pr..sis]	A	X	X	pl	X	X	X		
	Grass, Muhly	Muhlenbergia sp	U	X				X?	X		

Code	Common Name	SciName	Origin	ESB	CFP	SWA	PMP	WMP	Barnes	Listed	Invasive
	Grass, Old Field Panic	<i>Panicum lanuginosum</i> Ell. [<i>P. acuminatum</i> Sw.]	N	X						X?	
	Grass, Orchard	<i>Dactylis glomerata</i> L.	A	X		X	X	X	X		
	Grass, Perennial Ryegrass	<i>Lolium perenne</i> L.	A	X	X	X		X			
	Grass, Quack	<i>Elymus repens</i> (L.) Gould (<i>Agropyron</i>)	A	X		X		X		X?	
	Grass, Reed Canary	<i>Phalaris arundinacea</i> L.	A	X	X	X	X		X		X
	Grass, Rice Cut	<i>Leersia oryzoides</i> (L) Swartz	N	X?	X		X				
	Grass, Smooth Crab	<i>Digitaria ischaemum</i> (Schreb.) Muhl.	A	X	X	X					
	Grass, Squirrel-tail Barley	<i>Hordeum jubatum</i> L.	A	X	X	X		X	X		
	Grass, Switch	<i>Panicum virgatum</i> L.	N	X	X	X re?				re	
	Grass, Tall Redtop	<i>Tridens flavus</i> (L) A.Hitchc.	N	X	X	X					
	Grass, Timothy	<i>Phleum pratense</i> L.	A	X		X	X	X	X		
	Grass, Tuckerman's	<i>Panicum tuckermanii</i> Fern.	N	X			Xjb			T	
	Grass, Virginia Wild Rye	<i>Elymus virginicus</i> L.	N	X			X		re		
	Grass, Walters Barnyard	<i>Echinochloa walteri</i> (Pursh) Heller	N	X	X						
	Grass, White	<i>Leersia virginica</i> Willd.	N	X	X	X	X				
	Grass, Witch-	<i>Panicum capillare</i> L.	N	X?	X	X	X?		X		
	Grass, Yellow Foxtail	<i>Setaria pumila</i> (Poir) Roem. & Schult. [<i>S. glauca</i> (L.) Beauv.]	A	X	X	X		X	X		
	Gromwell, Corn	<i>Lithospermum arvense</i> L.	A	X				X			
	Ground Ivy	<i>Glechoma hederacea</i> L.	A	X	X	X	X	X	X		
	Ground-cherry, Smooth	<i>Physalis longifolia</i> Nutt.	N	X?	X?						
	Groundnut, Common	<i>Apios americana</i> Medicus	N	X			X		X		
	Groundsel, Common	<i>Senecio vulgaris</i> L.	A	X	X	X		X			
	Hedge-Hyssop, Clammy	<i>Gratiola neglecta</i> Torr.	N	X	X						
	Hedge-nettle, Rough	<i>Stachys aspera</i> Michx.	N	X	X	X?		X?	X?		
	Hedge-nettle, Swamp	<i>Stachys palustris</i> L.	N	X	X						

Code	Common Name	SciName	Origin	ESB	CFP	SWA	PMP	WMP	Barnes	Listed	Invasive
	Henbit	Lamium amplexicaule L.	A	X		X		X			
	Hog-peanut	Amphicarpa bracteata (L.) Fern.	N	X		X	X			X	
	Horse-nettle	Solanum carolinense L.	Z	X	X	X		X		X	
	Horseweed, Common	Conzya canadensis (L.) Cronq.	Z	X	X	X	X	X		C W	
	Indian plantain, Pale	Arnoglossum atriplicifolium (L.) H.Rob.[Cacalia a...a L.]	N	re	re						
	Indian-Strawberry	Duchesnea indica (Andrews) Focke	A	X		X				X	
	Iris, Larger Blue Flag	Iris virginica L. or versicolor	N	X?		X?	X?	X?		C L	
	Ironweed, Tall	Vernonia gigantea (Walt)Trel ex Branner & Coville	N	X	X	X	X	X		X	
	Jack-in-the-pulpit	Arisaema triphyllum (L.) Schott	N	X			X				
	Jewelweed, Orange (Touch-me-not)	Impatiens capensis Meerb.	N	X	X	X?	X	X		X	
	Jewelweed, Yellow	Impatiens pallida Nutt.	N	X			X				
	Jimson-weed	Datura stramonium L.	A	X		X				X	
	Joe-pye-weed, Hollow-stemmed	Eutrochium fistulosum (Barratt) E.E. Lamont [Eupatorium f. Barratt]	N	X?	X?						
	Joe-Pye-Weed, Purple (Sweet)	Eutrochium purpureum (L.) E.E. Lamont [Eupatorium p.. L.]	N	X			X				
	Knapweed, Spotted	Centuarea stoebe L. [C. maculosa]	A	X				R			X
	Knotweed, Prostrate	Polygonum aviculare L.	A	X	X	x		X?		X	
	Knotweed, Virginia	Polygonum virginianum L.	N	X	X	X	X			X	
	Lambsquarters	Chenopodium album L.	A	X	X	X		X		X	
	Lespedeza, Violet	Lespedeza violacea (L.) Pers.	N	X	X						
	Lettuce, Prickly	Lactuca serriola L.	A	X	X	X		X		X	
	Lettuce, Wild	Lactuca canadensis L.	N	X	X	X		X		X	
	Lobelia, Great Blue	Lobelia siphilitica L.	N	X	X	X	X	X			
	Lobelia, Indian-Tobacco	Lobelia inflata L.	N	X	X						

Code	Common Name	SciName	Origin	ESB	CFP	SWA	PMP	WMP	Barnes	Listed	Invasive
	Loosestrife, Fringed	<i>Lysimachia ciliata</i> L.	N	X			X				
	Loosestrife, Purple	<i>Lythrum salicaria</i> L.	A	X	X	X	X	X	U M		X
	Loosestrife, Swamp	<i>Decodon verticillatus</i> (L.) Elliot	N	X			X				
	Loosestrife, Swamp-Candles	<i>Lysimachia terrestris</i> (L.) BSP	N	X	X						
	Lotus, American	<i>Nelumbo lutea</i> Willd.	N	X	X		X	A L	X		
	Mayapple	<i>Podophyllum peltatum</i> L.	N	X	X	X	X	X	U L		
	Medick, Black	<i>Medicago lupulina</i> L.	A	X		X		X	X		
	Mercury, Three-seeded	<i>Acalypha virginica</i> L.var <i>rhomboidea</i> Cooperr.	N	X	X	X					
	Mexican-tea	<i>Chenopodium ambrosioides</i> L.	A	X?	X?						
	Milkweed, Common	<i>Asclepias syriaca</i> L.	N	X	X	X	X	X	X		
	Milkweed, Swamp	<i>Asclepias incarnata</i> L.	N	X	X	X		X	X		
	Mint, Field	<i>Mentha arvensis</i> L.	N	X	X	X?	X	X			
	Moneywort	<i>Lysimachia nummularia</i> L.	A	X	X	X			X		
	Monkey-flower, Common	<i>Mimulus ringens</i> L.	N	X	X	X	X	X	X		
	Morning-glory, Ivy-leaved	<i>Ipomoea hederacea</i> Jacq.	A	X	X	X					
	Motherwort, Common	<i>Leonurus cardiaca</i> L.	A	X				X			
	Mountain-mint, Virginia	<i>Pycnanthemum virginianum</i> (L.) Robins. & Fern.	N	re	re	re		re			
	Mugwort, Common	<i>Artemesia vulgaris</i> L.	A	X?		X?			X		
	Mullein, Common	<i>Verbascum thapsus</i> L.	A	X	X	X		X	X		
	Mullein, Moth	<i>Verbascum blatteria</i> L.	A	X	X	X?			X		
	Mustard, Black	<i>Brassica nigra</i> (L.) Koch	A	X?		X?			C M		
	Mustard, Garlic	<i>Alliaria petiolata</i> (M.Bieb) Cavara & Grande	A	X	X	X	X	X	X		X
	Mustard, Hedge	<i>Sisymbrium officinale</i> (L.) Scop.	A	X					X		
	Nettle, False	<i>Boehmeria cylindrica</i> (L.) Sw.	N	X	X	X	X		X		

Code	Common Name	SciName	Origin	ESB	CFP	SWA	PMP	WMP	Barnes	Listed	Invasive
	Nettle, Stinging	<i>Urtica dioica</i> L.	N	X	X	X	X		X		
	Nightshade, Bittersweet	<i>Solanum dulcamara</i> L.	A	X	X?	X	X	X	X		
	Nightshade, Black	<i>Solanum nigrum</i> L. [<i>S. ptychanthum</i>]	N	X	X	X	X	X	X		
	Nightshade, Common Enchanter's	<i>Circaea lutetiana</i> L.	N	X	X		X	X			
	Nodding-thistle	<i>Carduus nutans</i> L.	A	X	X	X	X	X	X		
	Nut-sedge, a common one	<i>Cyperus</i> sp.	N	X	X	X	X	X	X		
	Ox-eye, Smooth	<i>Heliopsis helianthoides</i> (L.) Sweet	N	re	re	re		re	X		
	Parsnip, Wild	<i>Pastinaca sativa</i> L.	A	X		X	X	X	X		X
	Partridge-pea	<i>Chamaecrista fasciculata</i> (Michx.) Greene.	N	re		re		re	X		
	Pea, Wild sp not everlasting	<i>Lathyrus</i> sp?	U	X				X	X		
	Penny-cress, Field	<i>Thlaspi arvense</i> L.	A	X	X	X		X	C L		
	Peppergrass	<i>Lepidum virginicum</i> L.	N	X	C L	X		X			
	Phlox, Garden	<i>Phlox paniculata</i> L.	N	pl	pl						
	Pickerelweed	<i>Pontederia cordata</i> L.	N	X	X						
	Pigweed, Oak-leaved	<i>Chenopodium glaucum</i> L.	A	X					X		
	Pigweed, Red-root	<i>Amaranthus retroflexus</i> L.	A	X		X		X			
	Pigweed, Smooth	<i>Amaranthus hybridus</i> L.	A	X	X	X		X			
	Pilewort	<i>Erechtites hieracifolius</i> (L.) Raf. ex DC.	N	X	X	X	X	X	X		
	Pimpernel, Scarlet	<i>Anagallis arvensis</i> L.	A	X		X					
	Pineapple-weed	<i>Matricaria discoidea</i> DC	A	X		X		X	X		
	Pink, Deptford	<i>Dianthus armeria</i> L.	A	X					X		
	Plantain, Common	<i>Plantago major</i> L.	A	X	X	X		X	X		
	Plantain, English	<i>Plantago lanceolata</i> L.	A	X	X	X	X	X	X		
	Plantain, Rugel's(Pale)	<i>Plantago rugelii</i> Decne.	N	X	X	X	X	X	X		
	Poison-hemlock	<i>Conium maculatum</i> L.	A	X				X	C L		X
	Pokeweed	<i>Phytolacca americana</i> L.	N	X	X	X	X	X			

Code	Common Name	SciName	Origin	ESB	CFP	SWA	PMP	WMP	Barnes	Listed	Invasive
	Pondweed, Leafy	Potamogeton foliosus Raf.?	N	X?	X?						
	Pondweed, linear	Potamogeton sp	N	X	X			X			
	Prairie-dock	Silphium terebinthinaceum Jacq.	N	re	re	re		re			
	Purslane, Common	Portulaca oleracea L.	A	X	X	X		X			
	Quickweed, Common	Galinsoga quadriradiata Ruiz & Pavon	A	X	X	X				X	
	Quickweed, Lesser	Galinsoga parviflora Cav.	A	X	X						
	Ragweed, common	Ambrosia artemisiifolia L.	N	X	X	X	X	X	X		
	Ragweed, Giant	Ambrosia trifida L.	N	X	X	X	X	X	X		
	Rose-mallow, Swamp	Hibiscus moscheutos L.	N	X	X	X	X			X	
	Rosinweed, Prairie	Silphium integrifolium Michx.	Z	X						R-1	
	Rosinweed, Whorled	Silphium trifoliatum L.	N	X	X			X			
	Rue, Early Meadow	Thalictrum dioicum L.	N	X	X						
	Rush, Knotted ?	Juncus nodosus L.	N	X?	X?					X?	
	Rush, Path	Juncus tenuis Willd.	N	X	X	X	X	X	X		
	Rush, Short-fruited	Juncus brachycarpus Engelm.	N	X	X	X	X	X			
	Rush, Soft	Juncus effusus L.	N	X	X	X	X	X	X		
	Rush, Toad	Juncus bufonius L.	N	X	X						
	Sandwort, Thyme-leaved	Arenaria serpyllifolia L.	A	X						X	
	Sedge, Blue-green	Carex glaucoidea Tuckerm.	N	X				X			
	Sedge, Crested	Carex cristatella Britton	N	X						X?	
	Sedge, Foxtail	Carex vulpinoidea Michx.	N	X				X		X?	
	Sedge, Frank's	Carex frankii Kunth.	N	X	X	X	X	X	X		
	Sedge, Glaucous	Carex canescens L.	N	X						X??	
	Sedge, Hop	Carex lupulina Muhl.ex Willd.	N	X?			X?				
	Sedge, Meadow	Carex granularis Muhl.ex Willd.	N	X						X?	
	Sedge, Pennsylvania	Carex pensylvanica Lam.	N	X?	X?					X?	

Code	Common Name	SciName	Origin	ESB	CFP	SWA	PMP	WMP	Barnes	Listed	Invasive
	Sedge, Pointed Broom	Carex scoparia Schkuhr.ex Willd.	N	X?		X?					
	Sedge, Soft Fox	Carex conjuncta Boott.	N	X	X			X		X?	
	Sedge, Stellate	Carex rosea Schkuhr ex Willd.	N	X						A L	
	Sedge, Woolly	Carex pellita Muhl. ['lanuginosa']	N	X		X					
	Self-heal(Heal-all)	Prunella vulgaris L.	A	X	X		X	X		X	
	Shepherd's-Purse	Capsella bursa-pastoris (L.) Medik.	A	X	X	X		X		X	
	Skullcap, Mad-dog	Scutellaria lateriflora L.	N	X	X	X					
	Skullcap, Marsh	Scutellaria epilobiifolia A.Hamilton	N	X			X				
	Smartweed, Ladies'-thumb	Polygonum persicaria L.	A	X		X		X		X	
	Smartweed, Nodding	Polygonum lapathifolium L.	N	X	X	X	X?	X?		X	
	Smartweed, Pennsylvania	Polygonum pennsylvanicum L.	N	X	X	X				X	
	Smartweed, Water	Polygonum amphibium L.	N	X?		X?	X?	X?		X	
	Snakeroot, a Black	Sanicula sp.	N	X		X	X	X		X	
	Snakeroot, White	Ageratina altissima (L.) R.M.King & H.Rob. [Eupatorium rugosum Houtt.]	N	X	X	X	X				
	Soapwort (Bouncing Bet)	Saponaria officinalis L.	A	X						X	
	Solomon's-plume,	Smilacina racemosa (L.) Desf.	N	X			X				
	Solomon's-seal, Hairy	Polygonatum pubescens (Willd.) Pursh	N	X	X						
	Solomon's-seal, Starry False	Smilacina stellata Desf.	N	X		X	X			X	
	Sorrel, Sheep	Rumex acetosella L.	A	X		X		X			
	Sow-thistle, Common	Sonchus oleraceus L.	A	X?	X?						
	Sow-thistle, Field	Sonchus arvensis L	A	X	X	X				X	
	Sow-thistle, Spiny-leaved	Sonchus asper (L.) Hill	A	X	X	X		X		X	
	Spearmint	Mentha spicata L.	A	X	X					X	
	Speedwell, Slender	Veronica filiformis Sm.	A	X						X	
	Speedwell, Purslane	Veronica peregrina L.	N	X	X	X		X			

Code	Common Name	SciName	Origin	ESB	CFP	SWA	PMP	WMP	Barnes	Listed	Invasive
	Speedwell, Thyme-leaved	<i>Veronica serpyllifolia</i> L.	A	X	X			X	X		
	Speedwell, Water	<i>Veronica anagallis-aquatica</i> L.	N	X	X						
	Speedwell, Wayside	<i>Veronica polita</i> Fries	A	X						X	
	Spiderwort, Ohio	<i>Tradescantia ohiensis</i> Raf.	N	re	re	re					
	Spike-rush, Blunt	<i>Eleocharis obtusa</i> (Willd.) Schultes	N	X?	X?	X?	X?	X??	X		
	Spike-rush, Ovate	<i>Eleocharis ovata</i> (Roth) R&S	N	X			Xjb			E	
	Spike-rush, Slender	<i>Eleocharis tenuis</i> (Willd.) Schultes	N	X?					X??		
	Spring-beauty	<i>Claytonia virginica</i> L.	N	X		X			X		
	Spurge, Prostrate	<i>Euphorbia maculata</i> L.	A	X	X	X					
	Spurge, Spotted	<i>Euphorbia nutans</i> Lag.	N	X		X					
	St.-John's-wort, Common	<i>Hypericum perforatum</i> L.	A	X		X		X	X		
	St.Johns-wort, Small-flowered	<i>Hypericum mutilum</i> L.	N	X	X	X					
	St.-John's-wort, Spotted	<i>Hypericum punctatum</i> Lam.	N	X	X			X	X		
	Star-of-Bethlehem	<i>Ornithogalum umbellatum</i> L.	A	X		X		X			
	Stickseed, Common	<i>Hackelia virginiana</i> (L.) I. M. Johnston	N	X	X						
	Strawberry, Virginia	<i>Fragaria virginiana</i> Duchesne	N	X	X			X	X		
	Sunflower type	<i>Helianthus</i> sp.?	N	X			X				
	Sunflower, Common	<i>Helianthus annuus</i> L.	Z	X		pl?					
	Sunflower, Sawtooth	<i>Helianthus grosseserratus</i> Martens.	N	re	re	re		re			
	Sweet-Clover, White	<i>Melilotus albus</i> Medik.	A	X	X	X	X	X	X		
	Sweet-Clover, Yellow	<i>Melilotus officinalis</i> (L)Lam.	A	X		X		X	X		
	Tearthumb, Arrow-leaved	<i>Polygonum saggitatum</i> L.	N	X	X	X	X				
	Teasel, Common	<i>Dipsacus fullonum</i> L.	A	X	X	X	X	R	X		X
	Teasel, Cut-leaved	<i>Dipsacus laciniatus</i> L.	A	X				X	U		X
	Thistle, Bull	<i>Cirsium vulgare</i> (Savi) Tenore	A	X	X	X	X	X	X		
	Thistle, Canada	<i>Cirsium arvense</i> (L) Scop.	A	X	X	X	X	X	X		X

Code	Common Name	SciName	Origin	ESB	CFP	SWA	PMP	WMP	Barnes	Listed	Invasive
	Thoroughwort, Late-flowering	Eupatorium serotinum Michx.	N	X	X		X				
	Thoroughwort, Tall	Eupatorium altissimum L.	N	X + re	re	x + re		X + re	X		
	Three-square	Schoenoplectus pungens (Vahl) Palla	N	X	C L						
	Tickseed-Sunflower, Nodding	Bidens cernua L.	N	X	X	X	X			X	
	Tickseed-Sunflower, Showy	Bidens coronata (L.) Britt.(or polylepis)	N	X	X						
	Tick-trefoil, a	Desmodium sp	N	X			X				
	Tick-trefoil, Canada	Desmodium canadense (L.) DC	N	X	X	X		re			
	Tinker's-weed	Triosteum perfoliatum L.	N	X	X		X				
	Toothwort, Cut-leaved	Cardamine concatenata (Michx.) Sw.[Dentaria laciniata]	N	X	X	X	X			X	
	Treacle-mustard	Erysimum sp.	A	X	X	X		X		X	
	Trillium, Large-flowered	Trillium grandiflorum (Michx) Salisb.	N	X			X				
	Turtlehead	Chelone glabra L.	N	X			X				
	Umbrella-sedge, Red-rooted	Cyperus erythrorhizos Muhl.	N	X	X						
	Umbrella-sedge, Shining	Cyperus bipartitus Torr. [C. rivularis]	N	X	X					X	
	Velvet-leaf	Abutilon theophrasti Medik.	A	X	X	X		X		X	
	Venus'-looking-glass	Triodanis perfoliata (L.) Nieuwl.	N	X	X	X		X			
	Vervain, Blue	Verbena hastata L.	N	X	X + re	X + re	X	X		X	
	Vervain, Prostrate	Verbena bracteata Lag. & Rodr.	N	X						X	
	Vervain, White	Verbena urticifolia L.	N	X	X	X	X	X		X	
	Vetch, a purple	Vicia sp.	A	X				X			
	Violet, Common Blue	Viola sororia Willd.	N	X	X		X?			X	
	Violet, Common Yellow	Viola pubescens Ait.	N	X			X				
	Virgin's-bower	Clematis virginiana L.	N	X			X				
	Water Stargrass	Heteranthera dubia (Jacq.) MacMill.	N	X	R-1						

Code	Common Name	SciName	Origin	ESB	CFP	SWA	PMP	WMP	Barnes	Listed	Invasive
	Water-Hemlock	<i>Cicuta maculata</i> L.	N	X	X	X	X				
	Water-horehound, Cut-leaved	<i>Lycopus americanus</i> Muhl.	N	X	X		X	X	X		
	Waterleaf, Virginia	<i>Hydrophyllum virginianum</i> L.	N	X	X	X	X				
	Water-lily	<i>Nymphaea odorata</i> Aiton	N	X	X	X		X	X		
	Water-milfoil, a	<i>Myriophyllum</i> sp. (prob.spicatum)	A	X			X				X
	Water-parsnip	<i>Sium suave</i> Walt.	N	X	X	X	X				
	Water-pepper	<i>Polygonum hydropiper</i> L.	N	X	X	X	X		X		
	Water-pimpernel	<i>Samolus parviflorus</i> Raf. [<i>S. floribundus</i>]	N	X	X	X	X	X			
	Water-plantain, Southern	<i>Alisma subcordatum</i> Raf.	N	X	X	X	X		X		
	Water-purslane	<i>Ludwigia palustris</i> (L.) Ell.	N	X	X		X		X		
	Wheat	<i>Triticum aestivum</i> L.	A	pl				pl			
	Wheatgrass, Tall	<i>Elytrigia elongata</i> (Host) Nevski.	A	X				pl			
	Whitlow-grass, Vernal	<i>Erophila verna</i> (L.) Besser [<i>Draba</i> ...]	A	X	X	X		X	X		
	Willow-herb, Purple-leaved	<i>Epilobium coloratum</i> Biehler	N	X?	X?	X?	X?	X	X		
	Willow-herb, Sm.-flow. Hairy	<i>Epilobium parviflorum</i> Schreb.	A	X	X	X		X	X		X
	Wingstem	<i>Verbesina alternifolia</i> (L)Britt.	N	X	X	X	X		X		
	Wood-nettle	<i>Laportea canadensis</i> (L.) Wedd.	N	X			X				
	Wood-sorrel, Common yellow	<i>Oxalis stricta</i> L.	N	X?	X?	X?	X?	X			
	Wood-sorrel, Southern Yellow	<i>Oxalis dillenii</i> Jacq.	N	X	X				X		
	Yam, Wild	<i>Dioscorea villosa</i> L.	N	X		X	X				
	Yarrow	<i>Achillea millefolium</i> L.	A	X	X	X		X	X		
	Yellowtop	<i>Packera glabellus</i> (Poir.) C. Jeffrey [<i>Senecio</i> g.. Poir.]	N	X	X	X		X			
	Yerba-de-tajo	<i>Eclipta prostrata</i> (L.) L.	N	X		X?		X			
386				386	250	227	151	191	209	4	17

T

Code	Common Name	SciName	Origin	ESB	CFP	SWA	PMP	WMP	Barnes	Listed	Invasive
	Alder sp.	<i>Alnus</i> sp.	N	X			X	X	X		
	Apple, Common	<i>Malus pumila</i> Mill. [<i>Pyrus malus</i>]	A	pl		pl					
	Arbor vitae	<i>Thuja occidentalis</i> L.	Z	pl		pl					
	Ash, Red and Green	<i>Fraxinus pennsylvanica</i> Marshall	N	X	X	X	X	X	X		
	Ash, White	<i>Fraxinus americana</i> L.	N	X	X						
	Autumn-olive	<i>Elaeagnus umbellata</i> Thunb.	A	X	X	X	X	X	X		X
	Bald-cypress	<i>Taxodium distichum</i> (L.) Rich	Z	pl	pl +X?				pl		
	Barberry, Japanese	<i>Berberis thunbergii</i> DC	A	X	X						
	Basswood	<i>Tilia americana</i> L.	N	X	X		X				
	Beech, American	<i>Fagus grandifolia</i> Ehrh.	N	pl					pl		
	Bramble, Black Raspberry	<i>Rubus occidentalis</i> L.	N	X	X	X	X	X	X		
	Bramble, Common Blackberry	<i>Rubus allegheniensis</i> Porter.	N	X	X	X	X	X	X		
	Bramble, Northern Dewberry	<i>Rubus flagellaris</i> Willd.	N	X			X	X	X		
	Butterfly-bush	<i>Buddleja davidii</i> Franch.	A	X					X		
	Butternut	<i>Juglans cinerea</i> L.	N	pl					pl	forme r P	
	Buttonbush	<i>Cephalanthus occidentalis</i> L.	N	X	X						
	Cherry, Sweet	<i>Prunus avium</i> L.	A	pl		pl					
	Cherry, Wild Black	<i>Prunus serotina</i> Ehrh.	N	X	X	X	X	X	X		
	Chestnut, Chinese	<i>Castanea mollissima</i>	A	pl		pl			pl		
	Choke Cherry	<i>Prunus virginiana</i> L.	N	X	X	X	X				
	Coffee-tree, Kentucky	<i>Gymnocladus dioica</i> (L.) Koch.	N	pl	pl				pl		
	Cottonwood	<i>Populus deltoides</i> Marsh	N	X	X	X	X	X	X		
	Crabapple, Ornamental	<i>Pyrus</i> sp. [<i>Malus</i>]	A	X			X		X		
	Crabapple, Wild	<i>Malus coronaria</i> (L.) Mill. [<i>Pyrus</i> c..]	N	X	X						

Code	Common Name	SciName	Origin	ESB	CFP	SWA	PMP	WMP	Barnes	Listed	Invasive
	Creeper, Thicket	Parthenocissus vitacea (Knerr.) A.Hitch.[P.inserta]	N	X	X	X		X	X		
	Creeper, Virginia	Parthenocissus quinquefolia (L) Planch.	N	X	X		X	X	X		
	Currant, American Black	Ribes americanum Mill.	N	X	X	X	X	X	X		
	Dogwood, Gray (Panicked)	Cornus racemosa Lam.	N	X	X	X	X	X	X		
	Dogwood, Red-Osier	Cornus serica L. [stolonifera]	N	X			X				
	Dogwood, Silky	Cornus amomum Mill.	N	X	X	X	X			X	
	Elderberry or Common Elder	Sambucus canadensis L.	N	X	X	X	X	X	X		
	Elm, Red (Slippery)	Ulmus rubra Muhl.	N	X	X	X					
	Elm, White (American)	Ulmus americana L.	N	X	X	X	X			X	
	Fir sp	Abies sp.	Z	X						pl	
	Ginkgo	Ginkgo biloba L.	A	pl						pl	
	Gooseberry, Prickly	Ribes cynosbati L.	N	X			X				
	Grape, Frost	Vitis vulpina L.	N	X	X			X	X		
	Grape, Riverbank	Vitis riparia Michx.	N	X	X	X	X	X			
	Greenbrier, Bristly	Smilax hispida Muhl.	N	X		X	X				
	Hackberry	Celtis occidentalis L.	N	X	X	X	X	X	X		
	Hawthorn, a	Cratageus sp.	N	X	X	X	X			X	
	Hawthorn, Cockspur 'Crusader'	Cratageus crusgalli inermis 'Crusader'	N	pl		pl				pl	
	Hawthorn, Green 'Winter King'	Cratageus viridis 'Winter King'	Z	pl		pl				pl	
	Hemlock, Eastern	Tsuga canadensis (L.) Carr	N	pl						pl	
	Hickory sp	Carya sp	N	X						X	
	Hickory, Bitternut	Carya cordiformis (Wang.) K.Koch	N	X	X		X				
	Hickory, Shagbark	Carya ovata (Mill.) K.Koch	N	X	X	X	X				
	Hickory, Sweet Pignut	Carya ovalis (Wang) Sarg.	N	X		X?					
	Honey-locust	Gleditsia triacanthos L.	N	X	X						

Code	Common Name	SciName	Origin	ESB	CFP	SWA	PMP	WMP	Barnes	Listed	Invasive
	Honey-locust, Thornless	Gleditsia triacanthos f. inermis	N	pl						pl	
	Honeysuckle, Amur	Lonicera maackii (Rupr.) Maxim.	A	X	X	X	X	X	U M		X
	Honeysuckle, Japanese	Lonicera japonica Thunb.	A	X	X	X		X	A W		X
	Honeysuckle, Morrow	Lonicera morrowii A.Gray	A	X	X						X
	Honeysuckle, Tartarian	Lonicera tatarica L.	A	X	X						X
	Hop-Hornbeam	Ostrya virginiana (Mill.) K.Koch	N	pl						pl	
	Hop-tree, Common	Ptelea trifoliata L.	N	X	X						
	Ivy, Poison	Toxicodendron radicans (L) Ktze.	N	X	X	X	X	X	X		
	Juniper, Shrub	Juniperus sp.	u	pl		pl					
	Linden sp	Tilia sp	U	pl						pl	
	Locust, Black	Robinia pseudoacacia L.	Z	X		X					
	Maple, Ash-leaved(Box-elder)	Acer negundo L.	N	X	X	X	X	X			
	Maple, Norway	Acer platanoides L.	A	X					X		X
	Maple, Paperbark	Acer griseum	A	X						pl	
	Maple, Red	Acer rubrum L.	N	X			X	X		pl	
	Maple, Silver	Acer saccharinum L.	N	X	X	X		X	X		
	Maple, Sugar	Acer saccharum Marsh	N	X	pl?		X		X		
	Moonseed	Menispermum canadense L.	N	X?	X?						
	Mulberry, Red	Morus rubra L.	N	X?	X?	X?	X?	X?	X?		
	Oak, Black	Quercus velutina Lam.	N	X	X	X					
	Oak, Bur	Quercus macrocarpa Michx.	N	X	X		X				
	Oak, English	Quercus robur	A	pl						pl+ X	
	Oak, Pin	Quercus palustris Muenchh.	N	X		X	X		X		
	Oak, Red	Quercus rubra L.	N	X	X	X	X			pl	
	Oak, Shingle	Quercus imbricaria Michx.	N	X		X	X				
	Oak, Swamp White	Quercus bicolor Willd.	N	X	X		X				

Code	Common Name	SciName	Origin	ESB	CFP	SWA	PMP	WMP	Barnes	Listed	Invasive
	Oak, White	Quercus alba L.	N	X	X		X		pl		
	Pear, Callery	Pyrus calleryana Decne.	A	pl?		X	X		pl?		X
	Pear, Domestic	Pyrus communis	A	pl	pl	pl					
	Pine, Scotch	Pinus sylvestris L.	E	pl					pl		
	Pine, White	Pinus strobus L.	Z	pl		pl			pl		
	Poplar, White?	Populus alba?	A	pl					pl		
	Privet, Common	Ligustrum vulgare L.	A	X	X	X	X		X		X
	Red-cedar, Eastern	Juniperus virginiana L.	N	X		X	X		R		
	Rose, Climbing Prairie	Rosa setigera Michx.	N	X?			X?				
	Rose, Dog	Rosa canina L.	A	X					X		X
	Rose, Multiflora	Rosa multiflora Thunb.	A	X	X	X	X	X	X		X
	Rose, Pasture	Rosa carolina L.	N	X	X			X			
	Sassafras	Sassafras albidum (Nutt.) Nees	N	X	X		X				
	Spruce, Colorado Blue	Picea pungens Engelm.	Z	pl					pl		
	Spruce, Norway	Picea abies L.	A	pl		?pl			pl		
	Sumac, Smooth	Rhus glabra L.	N	X		X	X				
	Sumac, Staghorn	Rhus typhina L. [R. hirta]	N	X	X	X	X	X	X		
	Sweet-gum	Liquidambar styraciflua L.	Z	pl				pl	pl		
	Tree-of-Heaven	Ailanthus altissima (Mill.) Swingle	A	X	X			X			X
	Trumpet-creeper	Campsis radicans (L) Seem ex Bureau	Z	X		X					
	Tulip-poplar	Liriodendron tulipifera L.	N	pl		pl					
	unk, leaf elmlike,bk oaklk,flow hornbeamlk	unk.	U	pl					X		
	Viburnum, Euro. Cranberry	Viburnum opulus L.	A	X		X	X		X		
	Walnut, Black	Juglans nigra L.	N	X	X	X	X	X	X		
	Willow, Black	Salix nigra Marsh	N	X	X	X	X	X	X		

Code	Common Name	SciName	Origin	ESB	CFP	SWA	PMP	WMP	Barnes	Listed	Invasive
	Willow, Heart-leaved	<i>Salix eriocephala</i> Michx. (<i>S. rigida</i>)	N	X?		X	X	X?	X?		
	Willow, Sandbar	<i>Salix exigua</i> Nutt. (<i>S. interior</i>)	N	X	X	X	x	X	X		
	Willow, Weeping	<i>Salix babylonica</i> L.	A	X		pl	X				
	Wintercreeper, Chinese	<i>Euonymous fortunei</i> (Turcz.) Hand.-Mazz.	A	X	X						X
	Yew sp	<i>Taxus</i> sp	A	pl		pl			pl		
105				105	56	56	51	32	66	1	12
494				494	308	285	204	225	277	5	29

Legend for Plant List

Code	Listed	Origin	Abundance/Distribution	Description of Code
L V				Lower Vascular Plant
P				Herbaceous
T				Woody Plant
	E			Endangered on State List
	P			Potentially Threatened on State List
	T			Threatened on State List
		A		Alien to Area and Country
		N		Native to Area, Indigenous
		Z		Naturalized from other part of country
			** bl	found by J. Blakeman
			** dnr	found by ODNR personnel
			** et	found by Envirotech Consultants
			** JB	found by J. Bissell
			** jm	found by John Mack
			** LT	found by L. Terveen
			A L	Abundant & Local
			A M	Abundant & Moderately Distributed
			A W	Abundant & Widespread
			ark	planted by J. Blakeman in 'ark' prairie
			C L	Common & Local
			C M	Common & Moderately Distributed
			C W	Common & Widespread
			N	Unknown Abundance or Distribution
			o	old record, not found recently
			pl	planted, usually leftover landscaping
			R L	Rare & Local
			R M	Rare and Moderately Distributed
			R W	Rare and Widespread
			re	restoration planting species
			U L	Uncommon & Local
			U M	Uncommon & Moderately Distributed
			U W	Uncommon & Widespread
			X	Present



Vertebrates of East Sandusky Bay Parks thru 2011

Friday, May 04, 2012

Group	Common Name	East Sandusky Bay
A	Bullfrog	X
	Frog, Leopard	X
	Toad, American	X
		<hr/> 3
F	Carp, Common	X
		<hr/> 1
M	Coyote	X
	Deer, Whitetail	X
	Fox, Red	X?
	Mole sp.	X
	Muskrat	X
	Opossum, Virginia	X
	Rabbit, Eastern Cottontail	X
	Raccoon	X
	Skunk, Striped	X
	Squirrel, Eastern Fox	X
	Vole, Meadow	X
	Woodchuck	X
	<hr/> 12	
R	Snake, Eastern Garter	X
	Turtle, Blanding's	X
	Turtle, Painted	X
	Turtle, Snapping	X
		<hr/> 4
	<hr/> 20	



Birds of East Sandusky Bay 2016

Tuesday, February 07, 2017

Species	East Sandusky Bay	CFP/Gateway	SWA/Putnam	WMP/Barnes
Snow Goose	Rare Visitor	X		
Canada Goose	Resident	X	X	X
Mute Swan	Resident	X	X	X
Trumpeter Swan	Visitor	X	X	X
Tundra Swan	Migrant	X	X	X
Wood Duck	Resident	X	X	X
Gadwall	Migrant	X	X	X
American Wigeon	Migrant	X	X	X
Black Duck	Migrant	X	X	X
Mallard Duck	Resident	X	X	X
Blue Wing Teal	Migrant/Resident?	X	X	X
Shoveler Duck	Migrant		X	X
Northern Pintail	Migrant			X
Green-winged Teal	Migrant	X	X	X
Canvasback	Migrant	X	X	
Redhead duck	Migrant			X
Ring-necked Duck	Migrant		X	
Lesser Scaup	Winter Visitor		X	X
Bufflehead	Winter Visitor	X	X	
Common Goldeneye	Winter Visitor	X	X	
Hooded Merganser	Resident?	X	X	X
Common Merganser	Winter Visitor	X	X	X
Red Breasted Merganser	Winter Visitor	X	X	
Ruddy Duck	Winter Visitor		X	X
Pied-billed Grebe	Migrant/Resident?	X		X
Horned Grebe	Migrant	X		
Double-crested Cormorant	Resident	X	X	X
American Bittern	Migrant			X
Great Blue Heron	Resident	X	X	X
Great Egret	Resident	X	X	X
Snowy Egret	Rare summer visitor	X		
Green Heron	Resident	X		X
Black-crowned Night-heron	Summer visitor	X		X

Species	East Sandusky Bay	CFP/Gateway	SWA/Putnam	WMP/Barnes
Turkey Vulture	Resident	X	X	X
Osprey	Migrant			X
Bald Eagle	Resident	X	X	X
Northern Harrier	Winter Migrant	X	X	X
Sharp-shinned Hawk	Migrant	X	X	
Cooper's Hawk	Resident	X	X	X
Red Shouldered Hawk	Migrant	X		X
Broad-winged Hawk	Migrant	X	X	
Red-tailed Hawk	Resident	X	X	X
American Kestrel	Rare visitor	X	X	X
Virginia Rail	Migrant			X
Sora	Migrant		X	X
American Coot	Migrant	X	X	X
Sandhill Crane	Flyover Migrant	X		
Killdeer	Resident	X	X	X
Greater Yellowlegs	Migrant	X	X	X
Solitary Sandpiper	Migrant	X		X
Spotted Sandpiper	Resident?	X	X	X
Black-necked Stilt	Rare Migrant			X
Pectoral Sandpiper	Migrant		X	
Common Snipe	Migrant/Resident?		X	X
American Woodcock	Resident	X	X	X
Bonaparte's Gull	Migrant	X	X	X
Ring-billed Gull	Resident	X	X	X
Herring Gull	Resident	X	X	X
Great Black-backed Gull	Winter Visitor	X	X	X
Caspian Tern	Migrant		X	X
Common Tern	Resident?	X	X	X
Forster's Tern	Migrant	X	X	
Rock Pigeon	Resident	X		X
Mourning Dove	Resident	X	X	X
Yellow-billed Cuckoo	Resident?	X	X	X
Screech Owl	Resident	X		
Great Horned Owl	Resident	X	X	X
Barred Owl	Resident	X		

Species	East Sandusky Bay	CFP/Gateway	SWA/Putnam	WMP/Barnes
Nighthawk	Migrant			X
Chimney Swift	Resident	X	X	X
Ruby-throated Hummingbird	Resident	X		
Belted Kingfisher	Resident	X	X	X
Red-headed Woodpecker	Rare migrant	X		X
Red-bellied Woodpecker	Resident	X	X	X
Yellow-bellied Sapsucker	Migrant	X	X	X
Downy Woodpecker	Resident	X	X	X
Hairy Woodpecker	Resident	X	X	X
Yellow-shafted Flicker	Resident	X	X	X
Eastern Wood Pewee	Resident	X		X
Yellow-bellied Flycatcher	Migrant	X		
Acadian Flycatcher	Resident?			X
Willow Flycatcher	Resident	X	X	X
Least Flycatcher	Migrant	X	X	
Eastern Phoebe	Resident	X	X	X
Great Crested Flycatcher	Resident	X		X
Eastern Kingbird	Resident	X	X	X
Northern Shrike	Rare Winter Visitor			X
White-eyed Vireo	Resident?	X	X	X
Yellow Throated Vireo	Migrant	X		
Blue-headed Vireo	Migrant	X		
Warbling Vireo	Resident	X	X	X
Red-eyed Vireo	Resident	X	X	X
Blue Jay	Resident	X	X	X
American Crow	Resident	X	X	X
Horned Lark	Resident		X	X
Purple Martin	Resident	X	X	X
Tree Swallow	Resident	X	X	X
Rough-winged Swallow	Resident	X	X	X
Bank Swallow	Resident	X	X	X
Cliff Swallow	Resident?			X
Barn Swallow	Resident	X	X	X
Black-capped Chickadee	Resident	X	X	X
Tufted Titmouse	Resident	X	X	X

Species	East Sandusky Bay	CFP/Gateway	SWA/Putnam	WMP/Barnes
Red-breasted Nuthatch	Winter Visitor	X		X
White-breasted Nuthatch	Resident	X	X	X
Brown Creeper	Winter Visitor/Migrant	X	X	X
Carolina Wren	Resident	X	X	X
House Wren	Resident	X	X	X
Winter Wren	Winter Visitor			X
Sedge Wren	Rare migrant	X		
Marsh Wren	Resident	X	X	X
Golden-crowned Kinglet	Winter Visitor	X	X	X
Ruby Crowned Kinglet	Migrant	X	X	X
Blue-gray Gnatcatcher	Resident	X	X	X
Eastern Bluebird	Resident	X	X	X
Veery	Migrant	X		X
Swainson's Thrush	Migrant	X		
Hermit Thrush	Migrant	X	X	X
Wood Thrush	Resident?	X		X
American Robin	Resident	X	X	X
Gray Catbird	Resident	X	X	X
Northern Mockingbird	Rare Visitor	X		X
Brown Thrasher	Resident	X	X	X
Starling	Resident	X	X	X
American Pipit	Migrant			X
Cedar waxwing	Resident	X	X	X
Tennessee Warbler	Migrant	X	X	X
Nashville Warbler	Migrant	X	X	X
Parula Warbler	Migrant	X		
Yellow Warbler	Resident	X	X	X
Chestnut-sided Warbler	Migrant/Resident?	X	X	
Magnolia Warbler	Migrant	X		X
Black-throated Blue Warbler	Migrant	X	X	
Yellow-rumped Warbler	Migrant	X	X	X
Black-throated Green Warbler	Migrant	X		X
Blackburnian Warbler	Migrant	X		
Palm Warbler	Migrant	X		X
Blackpoll Warbler	Migrant		X	X

Species	East Sandusky Bay	CFP/Gateway	SWA/Putnam	WMP/Barnes
Black and White Warbler	Migrant	X		
American Redstart	Resident?	X	X	X
Ovenbird	Migrant	X		
Northern Waterthrush	Migrant	X		
Common Yellowthroat	Resident	X	X	X
Hooded Warbler	Migrant	X		
Yellow-breasted Chat	Resident?		X	
Scarlet Tanager	Resident?	X		
Northern Cardinal	Resident	X	X	X
Rose-breasted Grosbeak	Resident	X	X	X
Indigo Bunting	Resident	X	X	X
Rufous Sided Towhee	Resident	X	X	X
Tree Sparrow	Winter Visitor	X	X	X
Chipping Sparrow	Resident	X	X	X
Field Sparrow	Resident	X	X	X
Vesper Sparrow	Migrant			X
Savannah Sparrow	Resident?		X	X
Grasshopper Sparrow	Migrant			X
Henslow's Sparrow	Migrant			X
Fox Sparrow	Migrant	X	X	X
Song Sparrow	Resident	X	X	X
Lincoln's Sparrow	Migrant		X	X
Swamp Sparrow	Resident?	X	X	X
White-throated Sparrow	Migrant	X	X	X
White-crowned Sparrow	Migrant	X	X	X
Dark-eyed Junco	Winter Visitor	X	X	X
Bobolink	Migrant			X
Red-winged blackbird	Resident	X	X	X
Eastern Meadowlark	Resident		X	X
Rusty Blackbird	Migrant	X	X	X
Common Grackle	Resident	X	X	X
Brown-headed Cowbird	Resident	X	X	X
Orchard Oriole	Resident	X	X	X
Baltimore Oriole	Resident	X	X	X
House Finch	Resident	X	X	X

Species	East Sandusky Bay	CFP/Gateway	SWA/Putnam	WMP/Barnes
Pine Siskin	Winter Visitor	X		
American Goldfinch	Resident	X	X	X
House Sparrow	Resident	X	X	
	176	176	146	124
				142



Barnes plant list, thru June 2012

Wednesday, July 11, 2012

10:03:30 PM

SciName	Common Name	Barnes	Code
<i>Agrimonia gryposepala</i> Wallr.	Agrimony, Common	X	P
<i>Agrimonia parviflora</i> Aiton	Agrimony, Small-flowered	X	P
<i>Alnus</i> sp.	Alder sp.	X	T
<i>Anemone canadensis</i> L.	Anemone, Canada	X	P
<i>Fraxinus pennsylvanica</i> Marshall	Ash, Red and Green	X	T
<i>Elaeagnus umbellata</i> Thunb.	Autumn-olive	X	T
<i>Geum vernum</i> (Raf.) T & G.	Avens, Spring	X	P
<i>Geum canadense</i> Jacq.	Avens, White	X	P
<i>Galium mollugo</i> L.	Bedstraw, White	X	P
<i>Fagus grandifolia</i> Ehrh.	Beech, American	pl?	T
<i>Bidens</i> sp	Beggar-ticks, a	X	P
<i>Convolvulus arvensis</i> L.	Bindweed, Field	X	P
<i>Calystegia sepium</i> (L) R.Br.	Bindweed, Hedge	X	P
<i>Lotus corniculatus</i> L.	Bird'sfoot-trefoil	X	P
<i>Rudbeckia hirta</i> L.	Black-eyed Susan	X	P
<i>Sisyrinchium angustifolium</i> Mill.	Blue-eyed-Grass, Common	X	P
<i>Eupatorium perfoliatum</i> L.	Boneset, Common	X	P
<i>Rubus occidentalis</i> L.	Bramble, Black Raspberry	X	T
<i>Rubus allegheniensis</i> Porter.	Bramble, Common Blackberry	X	T
<i>Rubus flagellaris</i> Willd.	Bramble, Northern Dewberry	X	T
<i>Scirpus atrovirens</i> Willd.	Bulrush, Dark-green	X	P
<i>Scirpus polyphyllus</i> Vahl	Bulrush, Leafy	X?	P
<i>Bolboschoenus fluviatilis</i> (Torr.) J. Sojak [<i>Scirpus</i> f..]	Bulrush, River	A L	P
<i>Schoenoplectus tabernaemontani</i> (C.C.Gmel.) Palla [<i>Scirpus validus</i>]	Bulrush, Soft-stemmed	X	P
<i>Arctium minus</i> Bernh.	Burdock, Common	X	P
<i>Ranunculus repens</i> L.	Buttercup, Creeping?	X	P
<i>Juglans cinerea</i> L.	Butternut	pl	T
<i>Daucus carota</i> L.	Carrot, Wild (Queen Anne's Lace)	X	P
<i>Typha x glauca</i> Godr.	Cattail, hybrid	X?	P
	Chamomile, False? fragrant	X	P
<i>Anthriscus</i> sp	Chamomile, Wild	X?	P
<i>Prunus serotina</i> Ehrh.	Cherry, Wild Black	X	T

SciName	Common Name	Barnes	Code
Castanea sp	Chestnut, Chinese	pl	T
Cerastium fontanum Baumg.[C.vulgatum]	Chickweed, Common Mouse-eared	X	P
Cichorium intybus L.	Chicory	X	P
Potentilla norvegica L.	Cinquefoil, Rough	X	P
Potentilla anserina L.	Cinquefoil, Silvery (Silverweed)	X	P
Trifolium hybridum L.	Clover, Alsike	X	P
Trifolium pratense L.	Clover, Red	X	P
Trifolium repens L.	Clover, White	X	P
Xanthium strumarium L.	Cocklebur	X	P
Gymnocladus dioica (L.) Koch.	Coffee-tree, Kentucky	pl	T
Valerianella sp	Corn-salad	X	P
Populus deltoides Marsh	Cottonwood	X	T
Pyrus sp. [Malus]	Crabapple, Ornamental	X	T
Geranium carolinianum L.	Crane's-bill, Carolina	X	P
Parthenocissus vitacea (Knerr.) A.Hitch.[P.inserta]	Creeper, Thicket	X	T
Parthenocissus quinquefolia (L) Planch.	Creeper, Virginia	X	T
Barbarea vulgaris R.Br.	Cress, Common Winter	C L	P
Lepidum campestre (L.) R.Br.	Cress, Cow (Field Peppergrass)	X	P
Cardamine hirsuta L	Cress, Hoary Bitter	X	P
Arabidopsis thaliana (L.) Heynh.	Cress, Mouse-ear	X	P
Ranunculus sceleratus L.	Crowfoot, Cursed	X	P
Coronilla varia L.	Crown-vetch	X	P
Ribes americanum Mill.	Currant, American Black	X	T
	Cypress, Bald	pl	T
Narcissus pseudonarcissus L.	Daffodil	X	P
Hesperis matronalis L.	Dame's Rocket	X	P
Taraxacum officinale Weber	Dandelion, Common	X	P
Hemerocallis fulva L.	Day-lily, Orange	X	P
Lamium purpureum L.	Dead-nettle, Purple	X	P
Rumex crispus L.	Dock, Curled	X	P
Apocynum cannabinum L.	Dogbane, Indian-Hemp	X	P
Cornus racemosa Lam.	Dogwood, Gray (Panicled)	X	T
Cornus amomum Mill.	Dogwood, Silky	X	T

SciName	Common Name	Barnes	Code
<i>Sambucus canadensis</i> L.	Elderberry or Common Elder	X	T
<i>Ulmus americana</i> L.	Elm, White (American)	X	T
<i>Oenothera biennis</i> L.	Evening-primrose, Common	X	P
<i>Floerkea proserpinacoides</i> Willd.	False Mermaid	X	P
<i>Erythronium americanum</i> Ker.	Fawn-lily, Yellow	x?	P
<i>Onoclea sensibilis</i> L.	Fern, Sensitive	X	L V
	Fir sp	pl	T
<i>Erigeron</i> sp.	Fleabane, a Daisy	X	P
<i>Allium vineale</i> L.	Garlic, Field	X	P
<i>Geranium maculatum</i> L.	Geranium, Wild	U	P
<i>Teucrium canadense</i> L.	Germander, American?	X	P
<i>Ginkgo biloba</i>	Ginkgo	pl	T
<i>Solidago canadensis</i> L.	Goldenrod, Canada (+Tall)	X	P
<i>Vitis vulpina</i> L.	Grape, Frost	X	T
<i>Echinochloa muricata</i> (P.Beauv.) Fern.	Grass, Barnyard	X	P
<i>Poa</i> sp.	Grass, Bluegrass, a	X	P
<i>Andropogon virginicus</i> L.	Grass, Common Broom-sedge	X	P
<i>Phragmites australis</i> (Cav.) Trin. ex Steudel	Grass, Common Reed	C W	P
<i>Bromus tectorum</i> L.	Grass, Downy Brome	X?	P
<i>Sorghastrum nutans</i> (L.) Nash	Grass, Indian	X	P
<i>Schizachyrium scoparium</i> (Michx.) Nees.	Grass, Little Bluestem	X	P
<i>Lolium pratense</i> (Huds.) Darbyshire [<i>Festuca pr..sis</i>]	Grass, Meadow Fescue?	X	P
<i>Muhlenbergia</i> sp	Grass, Muhly	X	P
<i>Panicum lanuginosum</i> Ell. [P. <i>acuminatum</i> Sw.]	Grass, Old Field Panic	X?	P
<i>Dactylis glomerata</i> L.	Grass, Orchard	X	P
<i>Elymus repens</i> (L.) Gould (<i>Agropyron</i>)	Grass, Quack	X?	P
<i>Phalaris arundinacea</i> L.	Grass, Reed Canary	X	P
<i>Phleum pratense</i> L.	Grass, Timothy	X	P
<i>Glechoma hederacea</i> L.	Ground Ivy	X	P
<i>Celtis occidentalis</i> L.	Hackberry	X	T
<i>Crataegus</i> sp.	Hawthorn, a	X	T

SciName	Common Name	Barnes	Code
<i>Stachys aspera</i> Michx.	Hedge-nettle, Rough	X?	P
<i>Carya</i> sp	Hickory sp	X	T
	Honey-locust, Thornless	pl	T
<i>Lonicera maackii</i> (Rupr.) Maxim.	Honeysuckle, Amur	U M	T
<i>Lonicera japonica</i> Thunb.	Honeysuckle, Japanese	A W	T
<i>Ostrya virginiana</i> (Mill.) K.Koch	Hop-Hornbeam	pl	T
<i>Equisetum arvense</i> L.	Horsetail, Field	X	L V
<i>Conzya canadensis</i> (L.) Cronq.	Horseweed, Common	C W	P
<i>Duchesnea indica</i> (Andrews) Focke	Indian-Strawberry	X	P
<i>Iris virginica</i> L. or <i>versicolor</i>	Iris, Larger Blue Flag	C L	P
<i>Toxicodendron radicans</i> (L) Ktze.	Ivy, Poison	X	T
<i>Impatiens capensis</i> Meerb.	Jewelweed, Orange (Touch-me-not)	X	P
<i>Polygonum aviculare</i> L.	Knotweed, Prostrate	X	P
<i>Polygonum virginianum</i> L.	Knotweed, Virginia	X	P
<i>Chenopodium album</i> L.	Lambsquarters	X	P
<i>Lactuca serriola</i> L.	Lettuce, Prickly	X	P
<i>Lactuca canadensis</i> L.	Lettuce, Wild	X	P
	Linden sp	pl	T
<i>Lythrum salicaria</i> L.	Loosestrife, Purple	X	P
<i>Nelumbo lutea</i> Willd.	Lotus, American	X	P
<i>Acer platanoides</i> L.	Maple, Norway	X	T
<i>Acer griseum</i>	Maple, Paperbark	pl	T
<i>Acer rubrum</i> L.	Maple, Red	pl	T
<i>Acer saccharinum</i> L.	Maple, Silver	X	T
<i>Podophyllum peltatum</i> L.	Mayapple	U L	P
<i>Medicago lupulina</i> L.	Medick, Black	X	P
<i>Asclepias syriaca</i> L.	Milkweed, Common	X	P
<i>Lysimachia nummularia</i> L.	Moneywort	X	P
<i>Artemisia vulgaris</i> L.	Mugwort, Common	X	P
<i>Morus rubra</i> L.	Mulberry, Red	X?	T
<i>Verbascum thapsus</i> L.	Mullein, Common	X	P
<i>Verbascum blatteria</i> L.	Mullein, Moth	X	P
<i>Brassica nigra</i> (L.) Koch	Mustard, Black	C M	P
<i>Alliaria petiolata</i> (M.Bieb) Cavara & Grande	Mustard, Garlic	X	P

SciName	Common Name	Barnes	Code
<i>Sisymbrium officinale</i> (L.) Scop.	Mustard, Hedge	X	P
<i>Boehmeria cylindrica</i> (L.) Sw.	Nettle, False	X	P
<i>Urtica dioica</i> L.	Nettle, Stinging	X	P
<i>Solanum dulcamara</i> L.	Nightshade, Bittersweet	X	P
<i>Carduus nutans</i> L.	Nodding-thistle	X	P
<i>Quercus robur</i>	Oak, English	pl	T
<i>Quercus palustris</i> Muenchh.	Oak, Pin	X	T
<i>Pastinaca sativa</i> L.	Parsnip, Wild	X	P
<i>Lathyrus</i> sp?	Pea, Wild sp not everlasting	X	P
<i>Pyrus calleryana</i> Decne.	Pear, Callery	X? PL?	T
<i>Thlaspi arvense</i> L.	Penny-cress, Field	C L	P
<i>Chenopodium glaucum</i> L.	Pigweed, Oak-leaved	X	P
<i>Pinus sylvestris</i> L.	Pine, Scotch	pl	T
<i>Pinus strobus</i> L.	Pine, White	pl	T
<i>Matricaria discoidea</i> DC	Pineapple-weed	X	P
<i>Dianthus armeria</i> L.	Pink, Deptford	X	P
<i>Plantago major</i> L.	Plantain, Common	X	P
<i>Plantago lanceolata</i> L.	Plantain, English	X	P
<i>Plantago rugelii</i> Decne.	Plantain, Rugel's(Pale)	X	P
<i>Conium maculatum</i>	Poison-hemlock	C L	P
	Poplar, White?	pl	T
<i>Ligustrum vulgare</i> L.	Privet, Common	X	T
<i>Galinsoga quadriradiata</i> Ruiz & Pavon	Quickweed, Common	X	P
<i>Ambrosia artemisiifolia</i> L.	Ragweed, common	X	P
<i>Juniperus virginiana</i> L.	Red-cedar, Eastern	R	T
<i>Rosa canina</i> L.	Rose, Dog	X?	T
<i>Rosa multiflora</i> Thunb.	Rose, Multiflora	X	T
<i>Hibiscus moscheutos</i> L.	Rose-mallow, Swamp	X	P
<i>Juncus nodosus</i> L.	Rush, Knotted ?	X?	P
<i>Juncus tenuis</i> Willd.	Rush, Path	X	P
<i>Juncus effusus</i> L.	Rush, Soft	X	P
<i>Carex cristatella</i> Britton	Sedge, Crested	X?	P
<i>Carex vulpinoidea</i> Michx.	Sedge, Foxtail	X?	P
<i>Carex frankii</i> Kunth.	Sedge, Frank's	X	P

SciName	Common Name	Barnes	Code
Carex canescens L.	Sedge, Glaucous	X??	P
Carex granularis Muhl.ex Willd.	Sedge, Meadow	X?	P
Carex pensylvanica Lam.	Sedge, Pennsylvania	X?	P
	Sedge, slender upright dkbr spk	X	P
Carex conjuncta Boott.	Sedge, Soft Fox	X?	P
Carex rosea Schkuhr ex Willd.	Sedge, Stellate	A L	P
Prunella vulgaris L.	Self-heal(Heal-all)	X	P
Capsella bursa-pastoris (L.) Medik.	Shepherd's-Purse	X	P
Polygonum sp.	Smartweed, a	X	P
Polygonum persica?	Smartweed, Ladies'-thumb	X	P
Polygonum amphibium L.	Smartweed, Water	X?	P
Smilacina stellata Desf.	Solomon's-seal, Starry False	X	P
Sonchus arvensis L	Sow-thistle, Field	X	P
Sonchus asper (L.) Hill	Sow-thistle, Spiny-leaved	X	P
Mentha spicata L.	Spearmint	X	P
Veronica serpyllifolia L.	Speedwell, Thyme-leaved	X	P
Eleocharis obtusa (Willd.) Schultes	Spike-rush, Blunt	X?	P
Claytonia virginica L.	Spring-beauty	X	P
	Spruce, Colorado Blue	pl	T
	Spruce, Norway	pl	T
Hypericum perforatum L.	St.-John's-wort, Common	X	P
Hypericum punctatum Lam.	St.-John's-wort, Spotted	X	P
Fragaria virginiana Duchesne	Strawberry, Virginia	X	P
Rhus typhina L. [R. hirta]	Sumac, Staghorn	X	T
Melilotus albus Medik.	Sweet-Clover, White	X	P
Melilotus officinalis (L)Lam.	Sweet-Clover, Yellow	X	P
	Sweet-gum	pl	T
Dipsacus fullonum L.	Teasel, Common	X	P
Cirsium vulgare (Savi) Tenore	Thistle, Bull	X	P
Cirsium arvense (L) Scop.	Thistle, Canada	X	P
Eupatorium altissimum L.	Thoroughwort, Tall	X?	P
Cardamine concatenata (Michx.) Sw.[Dentaria laciniata]	Toothwort, Cut-leaved	X	P
Erysimum sp.	Treacle-mustard	X	P
Lathyrus sp??	unk wild pea, black erect pods	X	P

SciName	Common Name	Barnes	Code
	unk, leaf elmlike,bk oaklk,flow hornbeamlk	X	T
<i>Abutilon theophrasti</i> Medik.	Velvet-leaf	X	P
<i>Viburnum opulus</i> L.	Viburnum, Euro. Cranberry	X	T
<i>Viola sororia</i> Willd.	Violet, Common Blue	X	P
<i>Juglans nigra</i> L	Walnut, Black	X	T
<i>Lycopus americanus</i> Muhl.	Water-horehound, Cut-leaved	X	P
<i>Alisma subcordatum</i> Raf.	Water-plantain, Southern	X	P
<i>Erophila verna</i> (L.) Besser [Draba ...]	Whitlow-grass, Vernal	X	P
<i>Salix nigra</i> Marsh	Willow, Black	X	T
<i>Salix eriocephala</i> Michx. (<i>S. rigida</i>)	Willow, Heart-leaved	X?	T
<i>Salix exigua</i> Nutt. (<i>S. interior</i>)	Willow, Sandbar	X	T
<i>Verbesina alternifolia</i> (L)Britt.	Wingstem	X	P
<i>Oxalis dillenii</i> Jacq.	Wood-sorrel, Southern Yellow	X	P
<i>Achillea millefolium</i> L.	Yarrow	X	P
<i>Taxus</i> sp	Yew sp	pl	T



Barnes Extension Ornamental Plants

Saturday, March 16, 2013

SciName	Common Name	Code	Origin	Barnes
<i>Taxodium distichum</i> (L.) Rich	Bald-cypress	T	Z	pl
<i>Fagus grandifolia</i> Ehrh.	Beech, American	T	N	pl
<i>Juglans cinerea</i> L.	Butternut	T	N	pl
<i>Castanea mollissima</i>	Chestnut, Chinese	T	A	pl
<i>Gymnocladus dioica</i> (L.) Koch.	Coffee-tree, Kentucky	T	N	pl
<i>Abies</i> sp.	Fir sp	T	Z	pl
<i>Ginkgo biloba</i>	Ginkgo	T	A	pl
<i>Crataegus crusgalli inermis</i> 'Crusader'	Hawthorn, Cockspur 'Crusader'	T	N	pl
<i>Crataegus viridis</i> 'Winter King'	Hawthorn, Green 'Winter King'	T	Z	pl
<i>Tsuga canadensis</i> (L.) Carr	Hemlock, Eastern	T	N	pl
<i>Gleditsia triacanthos</i> f. <i>inermis</i>	Honey-locust, Thornless	T	N	pl
<i>Ostrya virginiana</i> (Mill.) K.Koch	Hop-Hornbeam	T	N	pl
<i>Tilia</i> sp	Linden sp	T	U	pl
<i>Acer griseum</i>	Maple, Paperbark	T	A	pl
<i>Acer rubrum</i> L.	Maple, Red	T	N	pl
<i>Quercus robur</i>	Oak, English	T	A	pl+ X
<i>Quercus rubra</i> L.	Oak, Red	T	N	pl
<i>Quercus alba</i> L.	Oak, White	T	N	pl
<i>Pyrus calleryana</i> Decne.	Pear, Callery	T	A	pl?
<i>Pinus sylvestris</i> L.	Pine, Scotch	T	E	pl
<i>Pinus strobus</i> L.	Pine, White	T	Z	pl
<i>Populus alba</i> ?	Poplar, White?	T	A	pl
<i>Picea pungens</i> Engelm.	Spruce, Colorado Blue	T	Z	pl
<i>Picea abies</i> L.	Spruce, Norway	T	A	pl
<i>Liquidambar styraciflua</i> L.	Sweet-gum	T	Z	pl
<i>Taxus</i> sp	Yew sp	T	A	pl