

2016 | CONTROLLING

SEPTEMBER 12-15 • SAN DIEGO

2016 | CONTROLLING

SEPTEMBER 12-15 • SAN DIEGO

Improve your productivity in SAP Controlling

Sydney McConnell

Ashish Sampat

© 2016 ERP Corp. All rights reserved.

2016 | CONTROLLING

SEPTEMBER 12-15 • SAN DIEGO


Sydney McConnell

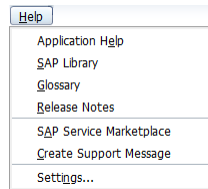
© 2016 ERP Corp. All rights reserved.

Topics

- **F1: Not just for help!**
- **Visual options: Change the color of your system**
- **Export to spreadsheet: Default format**

F1: Not just for help!

- Multiple methods to access SAP Help
 - Help button 
 - Pressing the F1 key
 - *Help* menu path
- Each option can give you specific information about the active field or transaction
 - Help menu can also take you to the SAP Library website, glossary, release notes, etc.



5

2016 | CONTROLLING

What else can you do with help?

Application help: go directly to SAP help website for chosen topic

Technical information: table/field names, parameters, etc.

Edit documentation: customize help text to your organization

Arrows to navigate to/from prior help windows

Customizing: Go straight to IMG configuration screens for selected field

6

2016 | CONTROLLING

Help: Technical information

- From a help window, click the technical information button to find

Screen data & GUI data: useful for scheduling background jobs, developers

Table & Field names: good for building queries, reviewing data directly in tables

Parameter ID: Use this in SU3 to set user defaults

7

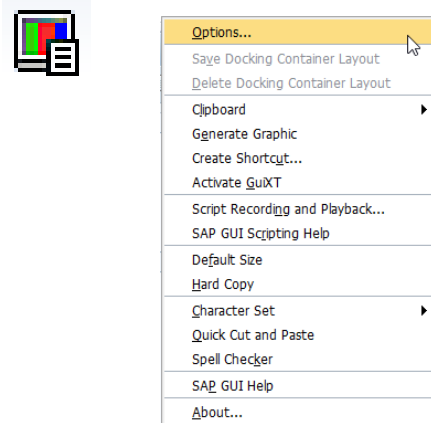
2016 | CONTROLLING

Topics

- F1: Not just for help!
- Visual options: System color & history
- Export to spreadsheet: Default format

Visual options

- Click the *Customize local layout* button or press Alt + F12, then select *Options* to find various display options

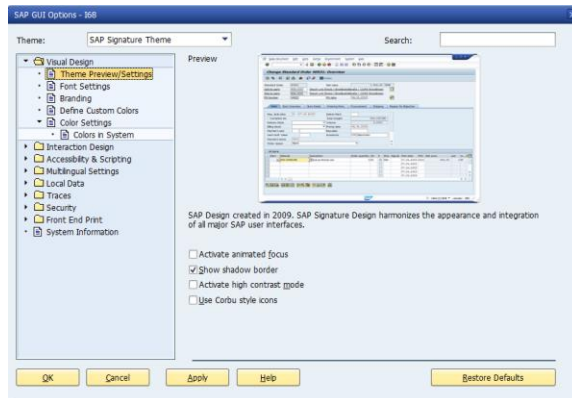


9

2016 | CONTROLLING

SAP GUI options window

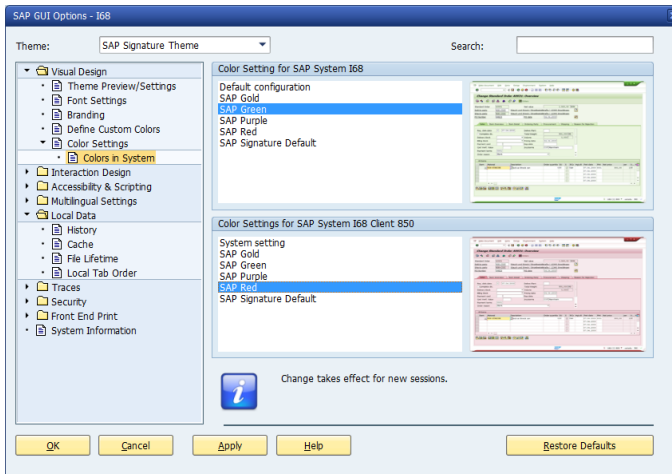
- Changeable options include theme, fonts, colors, company logos, audio signals, etc.



10

2016 | CONTROLLING

System color

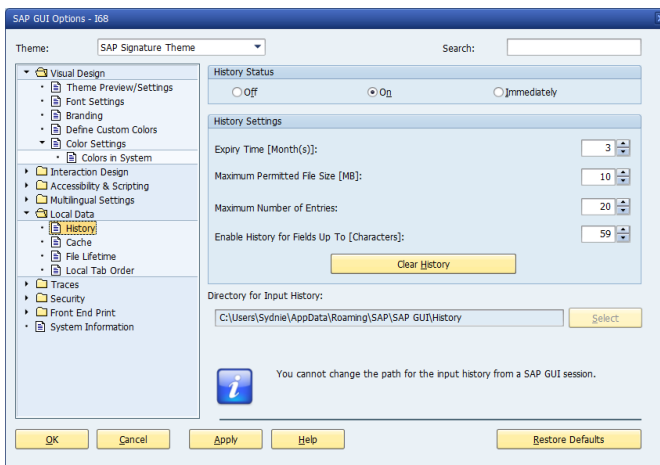


Depending on your theme, you can choose a different color for different SAP clients/systems – an instant visual clue when you're accidentally getting ready to test something in your production client.

11

2016 | CONTROLLING

Field history



History: Turn on to keep recent field entries in memory – no need to retype the same 18 digit material number.

Have a mistake in your history list? Just right click on that entry, then press delete.

12

2016 | CONTROLLING


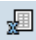
Topics

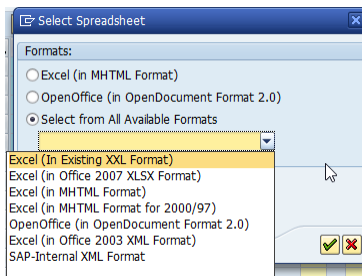
- F1: Not just for help!
- Visual options: System color & history
- **Export to spreadsheet: Default format**

13

2016 | CONTROLLING

Export to spreadsheet

- Lots of reports, queries and lists can be exported directly to a spreadsheet
 - Menu path > Export
 - Export button 
 - Spreadsheet button 

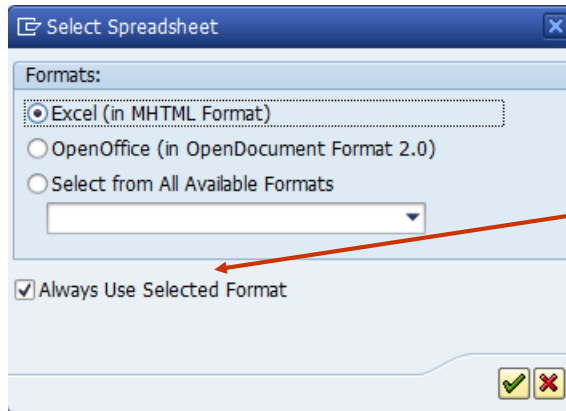


Choose from available formats – experiment to see which works best for you. My favorites are *Excel (in MHTML Format)* and *Excel (in Existing XXL Format)*, depending on what sort of data (and how much data) I'm working with.

14

2016 | CONTROLLING

Export to spreadsheet – default format



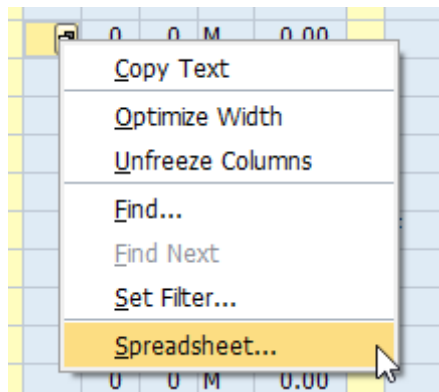
If you have a preferred format, check the *Always Use Selected Format* box to avoid this selection box in the future.

15

2016 | CONTROLLING

Resetting default export format

- **Oops! I don't want to use my default format anymore! How can I fix it?**



Just right-click anywhere in your report or list, then choose spreadsheet. This will get you back to the Select Spreadsheet window.

16

2016 | CONTROLLING

Resources

- **First Steps in SAP**
 - Authors: Sydnie McConnell and Martin Munzel, Publisher: Espresso Tutorials
 - http://www.espresso-tutorials.com/HR_S0045.php
- **SAP ERP User Guide - Tips to Increase Productivity**
 - Author: Sydnie McConnell, Publisher: Espresso Tutorials
 - Fall 2016 release
- <http://scn.sap.com/>
- <http://help.sap.com/>

17

2016 | CONTROLLING

Questions

- Sydnie.McConnell@woodward.com
- <https://www.linkedin.com/in/sydniemcconnell>



18

2016 | CONTROLLING

2016 | CONTROLLING

SEPTEMBER 12-15 • SAN DIEGO

Ashish Sampat

© 2016 ERP Corp. All rights reserved.

Introduction

- **Tips to troubleshoot common error messages in product costing**
- **Review various cost objects available for tracking costs**
- **Learn how Material Status can control logistics transactions**
- **Analyze MM-FI flow with transaction key / account modifiers**

Topics

- Troubleshoot product costing messages
- Evaluate the right Cost Object for you
- Utilize Material Status
- Analyze MM-FI Accounting Flow
- Summary

21

2016 | CONTROLLING

Product Costing Messages

- Accurate and error-free costing is every controller's goal.
- Releasing an incorrect cost estimate may result in incorrect financial postings.
- A costing run will be error-free when relevant master data is accurately setup.
- Getting all materials to cost successfully requires an iterative process where the errors are analyzed in detail, fixes are made, and costing is performed again.
- Costing Run log: messages categorized with traffic lights / message type:
 - Error messages: shown in red (message type "E")
 - Warning messages: shown in yellow (message type "W")
 - Information messages: shown in green with (message type "I")
- Unique message numbers further categorize the type of error
 - E.g. CK 240: Cost component split costed with value of zero

22

2016 | CONTROLLING

Product Costing Messages

- Message class (area) and number combine as a category
 - CK 197: GL account does not exist
 - CK 597: Costing items for material..... without cost element
 - CK 168: Cost estimate for material is incorrect
 - KL 023: No control record for Activity type ...in version
 - CK 776: No valid source of supply found for material ...
 - CK 240: Cost component split costed with value of zero

Costing Run: Cost Estimate - Log

Log created on 03/25/2016

Information: 3
Warnings: 5
Error: 5
Total: 8

Msg. Typ	Material	Plant	Area	MsgNo	Message Text	PrAb/Proc	PrMsg
E	RAW-1001	DHCl	CK	197	GL account GCL1 733331 does not exist		1
E	RAW-1001	DHCl	CK	597	Costing items for material RAW-1001 in plant DHCl without cost element.		1
E	FG-1001	DHCl	CK	168	Cost estimate for material RAW-1001 / plant DHCl is incorrect		1
E	FG-1001	DHCl	KL	023	No control record for Activity type GCL1/CS1100/MGRS in version 000 / 2016		2
E	FG-1001	DHCl	KL	023	No control record for Activity type GCL1/CS1100/LARSR in version 000 / 2016		3
I	RAW-1001	DHCl	CK	776	No valid source of supply found for material RAW-1001 plant DHCl		1
I	RAW-1001	DHCl	CK	240	Cost component split costed with value of zero		1
I	FG-1001	DHCl	CK	240	Cost component split costed with value of zero		3

23

2016 | CONTROLLING

Troubleshooting Product Costing Messages – 1 of 4

- Compilation of frequent messages during costing
- Some of these messages can be at times cryptic and require further explanation

Message Class	Message No.	Error description	Explanation / root cause	Steps for correction
KL	023	No control record for Activity type in activity planning / qty planning	Missing planning record for <CO Area>/<Cost Center>/<Activity Type> in <version> / <Year> combination	Maintain Cost Center Planning (KP26) for given combination in respective version and year
CK	060	Object was not costed	Missing procurement price / bill of material, depending on proc type (MM03-MRP2 view)	Maintain BOM if proc type in MM03-MRP2 "E" in-house production; maintain purchase price if "E" externally procured
CK	130	Work center <WW> in plant <PPPP> has no cost center	Material uses routing (CA03) that has work center (CR03) which is not assigned to a cost center	Maintain cost center assignment for work center (CR02) or Resource (CRC2)
MG	144	The field <MBEW-HRKFT> is defined as a required field; it does not contain an entry	Missing <Origin Group (field HRKFT)> in MM03-Costing 1 view	Maintain relevant views in material master (MM01 / MM02)
CK	168	Cost estimate for material <MMMMMMM> in plant <PPPP> is incorrect	Costing result of underlying material was incorrect cost rollup does not take place	Rectify errors in underlying materials
CK	197	G/L account <Chart of Account> <Account> does not exist	GL Account maintained in MM-FI Account determination is not setup (FS00)	Create the GL account, or modify GL Account in MM-FI Account determination (OBYC) for GBB-VBR

24

2016 | CONTROLLING

Troubleshooting Product Costing Messages – 2 of 4

Message Class	Message No.	Error description	Explanation / root cause	Steps for correction
CK	229	No routing could be determined for material <MMMMMMMM>	Missing routing (CA03) / recipe (C203) setup for the quantity structure date	Maintain routing (CR02) / Recipe (CRC2)
CK	239	Cost element <CCCCCCC> is not assigned to a cost component	Missing assignment of cost element to cost components (OKTZ)	Maintain configuration for cost components (transaction OKTZ), map cost element to appropriate cost component
CK	240	Cost component split costed with value of zero	Costing result was zero, no cost components could be determined	Maintain BOM if proc type in MM03-MRP2 "E" in-house production; maintain purchase price if "E" externally procured
CK	322	Consumption account cannot be determined	Incorrect valuation class setup in MM03-Accounting 1 view	Check valuation class in MM03-Accounting 1 view/ A valid class will point to correct consumption account.
CK	323	There is no exchange rate for exchange rate type <P> on <MM/DD/YYYY>: <USD / EUR>	Missing exchange rate for currency combination for given exchange rate type and valuation date	Maintain exchange rate (transaction OB08, updates table TCURR)
CK	354	Material <MMMMMMMM> in plant <PPPP> has material status 01 : Blocked for Procmnt/Whse	Material status does not require it to be costed	Change the status of the material (MM02-MRP1 view) or exclude the material from CK40N selection

25

2016 | CONTROLLING

Troubleshooting Product Costing Messages – 3 of 4

Message Class	Message No.	Error description	Explanation / root cause	Steps for correction
CK	361	Value of costing item 00001 in itemization is 0	A component material in BOM has a zero cost (quantity and / or price are too small)	Analyze data setup. Sometimes there could be valid reasons to have items on BOM with 0.001 quantity (CS03) or price at 0.01
CK	380	No valid source of supply could be found	Missing Source List (ME03)	Maintain Source List (ME01 or ME05)
CK	424	Material <MMMMMMMM> plant <PPPP> has no BOM	Missing Bill of Material even though proc type (MM03-MRP2 view) is "E" In-House production	Create Bill of Material, or change the procurement type to "F" - External procurement
CK	465	No price could be determined for material/batch <MMMMMMMM> plant <PPPP>	Costing result was zero	Maintain BOM if proc type in MM03-MRP2 "E" in-house production; maintain purchase price if "E" externally procured
CK	466	No price could be determined for internal activity <AAAAA> <CCCCC>	Missing price for activity AAAAA and cost center CCCCC combination	Maintain activity price directly (KP26) or via activity price calculation (KSPI), verify price (KSBT)
CK	468	No price could be determined for subcontracting	Missing PIR (ME13) for subcontracting, even though MM03-MRP2 view has Special Proct Type 30 - Subcontracting	Maintain PIR (ME11 / ME12) with subcontracting category for the given valuation date

26

2016 | CONTROLLING

Troubleshooting Product Costing Messages – 4 of 4

Message Class	Message No.	Error description	Explanation / root cause	Steps for correction
CK	597	Costing items for material <MMMMMMMM> in plant <PPPP> without cost element.	GL Account maintained in configuration does not exist as a cost element (KA03)	Create the cost element, or modify GL Account in MM-FI Account determination (OBYC) for GBB-VBR
CK	776	No valid source of supply found for material <MMMMMMMM> plant <PPPP>	Missing purchasing information record - PIR (ME13)	Create PIR (ME11) or modify PIR (ME12) for the given valuation dates

Transaction codes used for costing

Category	Transaction description	Transaction code
Individual Costing	Create Material Cost Estimate with Quantity Structure	CK11N
	Display Material Cost Estimate with Quantity Structure	CK13N
	Price Update: Mark Standard Price	CK24
	Price Update: Release Standard Price	CK24
	Comparison of Itemization	CK33
	Display Price Change Document	CKMPCD
Mass Costing	Reorganization of Cost Estimates	CKR1
	Edit Costing Run	CK40N
	Delete Costing Run	CK44
	Display Materials To Be Costed	CKAPP01
Reports	Search for Price Change Documents	CKMPCSEARCH
	Analyze/Compare Material Cost Estimates: Results of Costing Run	S_ALR_87099930
	Analyze/Compare Material Cost Estimates: Price vs Cost Estimate	S_ALR_87099931
	Analyze/Compare Material Cost Estimates: Variances Between Costing Runs	S_ALR_87099932
	Analyze/Compare Material Cost Estimates: Cost Estimate List	S_P99_41000111

27

Transaction codes for Troubleshooting Costing Messages

Category	Transaction description	Transaction code
Material Master	Display Material	MM03
	Material List	MM60
Bill of Material	Display Material BOM	CS03
	Explode BOM: Level by Level	CS11
	Explode BOM: Multilevel BOM	CS14
	Where-Used List: Material	CS15
Work Center / Resource	Display Work Center	CR03
	Display Resource	CRC3
	Work Center / Resource List	CR05
Routing / Recipe	Assignment of Work Centers / Resources to Cost Centers	CR06
	Display Routing	CA03
	Display Rate Routing	CA23
	Display Master Recipe	C203
Source List	Production Version: Mass Processing	C223
	Maintain Source List	ME01
	Display Source List	ME03
	Generate Source List	ME05
Purchasing Information Record	Source List for Material	ME0M
	Create Info Record	ME11
	Change Info Record	ME12
	Display Info Record	ME13
Cost Center Accounting Master Data	Info Records per Material	ME1M
	Display Cost Center	KS03
	Display Cost Element	KA03
	Display Activity Type	KL03
Cost Center Planning	Set Planner Profile	KP04
	Change Cost Element / Activity Input Planning	KP06
	Display Cost Element / Activity Input Planning	KP07
	Change Activity Type / Price Planning	KP26
	Display Activity Type / Price Planning	KP27
	Activity Type Price Report	KSBT

MM / PP / CO related transaction codes for troubleshooting messages during costing

28

Topics

- Troubleshoot product costing messages
- Evaluate the right Cost Object for you
- Utilize Material Status
- Analyze MM-FI Accounting Flow
- Summary

29

2016 | CONTROLLING

Evaluate the right cost object for you

- **Cost objects and their uses:**
 - **Production order:** used to track product costs in discrete manufacturing
 - **Process order:** used to track product costs in process manufacturing
 - **CO production order:** can be used in any industry
 - **Product cost collector:** used in repetitive manufacturing
 - **Internal order:** used to collect, monitor, and settle costs for specific project
 - **Plant maintenance order:** used to track costs for maintenance
 - **Sales order:** used to assign costs to a sales order
 - **Cost center:** most widely used master data elements in controlling

30

2016 | CONTROLLING

Cost objects: Prerequisites (Master Data), Order Type used

- Production Order: Material Master, BOM, Work Center, Routing (Order category 10, Type PP01)
- Process Order: Material Master, BOM, Resource, Master Recipe. (Order category 40, Type PI01)
- CO Production Order: Material Master. (Order category 4, Type CP01)
- Product Cost Collector: Material Master, BOM, Work Ctr, Routing. (Order cat. 5, Order Type RM01)
- Internal Order: No logistics master data is necessary. (Order cat. 1, several order types available)
- Plant maintenance order: Work Center, Functional Location. (Order category 30, Type PM01)
- Sales Order: Sales and Distribution side master data. (Order category is not applicable)
- Cost Center: No logistics master data is necessary. (Order category is not applicable)

Comparison of various cost objects used in Shop Floor Control and Overhead Cost Control

Process group	Process (rows), cost object (columns), transaction code (cells)	Production Order	Process Order	CO Production Order	Product Cost Collector	Internal Order	Plant Maintenance	Sales Order (as cost object)	Cost Center
Pre-requisite master data	Material Master	MM03	MM03	MM03	MM03	NA	NA	MM03	NA
	Bill of Material	CS03	CS03	NA	CS03	NA	NA	NA	NA
	Work Center / Resource Routing / Master Recipe	CR03 CA03	CR03 CR03	NA	CR03 CA03	NA	NA	CR03 NA	NA NA
Order / Object Type / Settlement info	Example Order Type (KOT2)	PP01	PI01	CP01	RM01	0100 / 0600	PM01	NA	NA
	Object Type (KOT2)	Production	Production	Production	Production	Overhead / Investment	Overhead	NA	NA
	Order Category (KOT2)	10-PP Production Order	40-Process Order	4-CO Production Order	5-Product Cost Collector	1-Internal Order	30-Maintenance Order	NA	NA
	Settlement Profile (KOT2 / OK07)	PP01- Production order	PI01-Process order	PP01- Production order	PP01- Production order	20-Overhead; 30-Asset Settlement	40-Maintenance	NA	NA
	Allocation Structure (OK07 / OK06)	A1-CO Allocation structure	A1-CO Allocation structure	A1-CO Allocation structure	A1-CO Allocation structure	20 - Internal Ord; 30- Investment Ord	A1-CO Allocation structure	NA	NA
	PA Transfer Structure (OK07 / KE1)	E1-PA settlement	E1-PA settlement	E1-PA settlement	E1-PA settlement	E1-PA settlement; NA	E1-PA	NA	NA

31

Cost objects: Transaction codes for various processes

- Configure order types, setup pre-requisites master data (previous slide)
- Setup cost object data, perform transactions, carry out period-end closing steps (WIP, Variance, Settlement, overhead calculation, template allocation, revaluation of activity prices)

Comparison of various cost objects used in Shop Floor Control and Overhead Cost Control

Process group	Process (rows), cost object (columns), transaction code (cells)	Production Order	Process Order	CO Production Order	Product Cost Collector	Internal Order	Plant Maintenance	Sales Order (as cost object)	Cost Center
Cost object data	Create	CO01	COR1	KKF1	KKF6N / KKF6	KO01	IW31	VA01	KS01
	Change	CO02	COR2	KKF2	KKF6N / KKF7	KO02	IW32	VA02	KS02
	Display	CO03	COR3	KKF3	KKF6N / KKF8	KO03	IW33	VA03	KS03
Goods movement / activities	Goods Issue	MIGO / MB1A	MIGO / MB1A	MIGO / MB1A	MF8F	MIGO / MB1A	MIGO / MB11	NA	MIGO / MB1A
	Confirmation	CO11N / CO15	COR6N / CORK	KB21N	MF8F	KB21N	IW41	NA	KB21N
	Goods Receipt	MIGO / MB31	MIGO / MB31	MIGO / MB31	MF8F	MIGO / MB31	MIGO / MB31	NA	NA
Period-end closing	Overhead - individual	KG12	KG12	KG12	CO42	KG12	KG12	VA44	KS14
	Overhead - collective	CO43	CO43	CO43	CO43	KG14	KG14	VA44	KS14
	Revaluation of Activity prices - individual	MFN1	MFN1	MFN1	CON1	KON1	KON1	VAN1	NA
	Revaluation of Activity prices - collective	CON2	CON2	CON2	CON2	KON2	KON2	VAN1	NA
	Template Allocation - individual	CPTA	CPTA	CPTA	CPTA	CPTA	NA	CPTJ	KPAS
	Template Allocation - collective	CPTD	CPTD	CPTD	CPTD	CPTB	NA	CPTJ	KPAS
	WIP - individual	KKAX	KKAX	KKAS	KKAS	KKAI	KKAI	KKAI	NA
	WIP - individual display	KKAY	KKAY	KKAT	KKAT	NA	NA	KKAI	NA
	WIP - collective	KKAO	KKAO	KKAO	KKAO	KKAI	KKAI	KKAI	NA
	WIP - collective display	KKAQ	KKAQ	KKAQ	KKAQ	NA	NA	KKAI	NA
Variance - individual	Variance - individual	KK52	KK52	KK56	KK56	NA	NA	NA	KK51
	Variance - collective	KK51	KK51	KK55	KK55	NA	NA	NA	KK51
	Settlement - individual	KO88	KO88	KO88	KK87	KO88	KO88	VAB8	NA
	Settlement - collective	CO88	CO88	CO88	CO88	KO8G	KO8G	VAB8	NA
Reporting	Line Item Display (specific to object / generic)	KOB1	KOB1	KOB1	KRMI / KOB1	KOB1	KOB1	KVBI	KSBI

32

Topics

- Troubleshoot product costing messages
- Evaluate the right Cost Object for you
- Utilize Material Status
- Analyze MM-FI Accounting Flow
- Summary

33

2016 | CONTROLLING

Use Material Status to Control Logistics Transactions

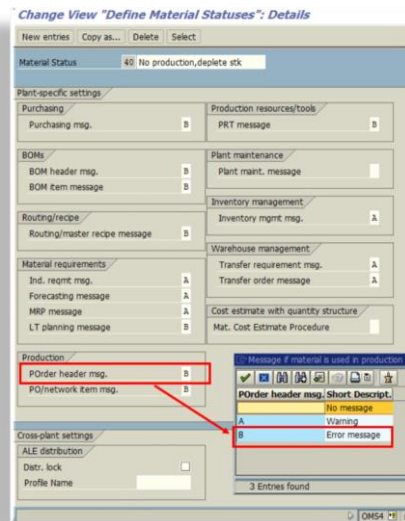
- The material status determines how a material is handled (which transactions are allowed / disallowed) in different applications and in business processes like procurement, MRP, plant maintenance, costing, forecasting, etc.
- Cross-plant material status maintained in the Basic Data view applies to all plants, but Plant-specific material status (MRP1 and Costing 1) override the status in Basic Data
- Material status and its attributes are defined in configuration transaction OMS4
 - Menu path: Tools → Customizing → IMG → SPRO Execute Project → SAP Reference IMG → Logistics – General → Material Master → OMS4 – Define Material Statuses
- Indicative list of material status (will vary based on business requirement)
 - 10 – Material under setup
 - 20 – Development phase
 - 30 – Commercial production
 - 40 – No production, deplete stock
 - 50 – Obsolete, deletion flag

34

2016 | CONTROLLING

Explanation of Material Status in OMS4

- **Message flags in OMS4:**
 - Flag "A" (warning): A warning message is returned when performing the function
 - Flag "B" (error): An error message is returned when performing the function.
 - Flag "<blank>": No message (transaction is allowed)
- **Example: when material status is 40 (No production, deplete stock) production order should not be allowed to be created anymore**
 - Flag "B" (error) is set for production order in OMS4. Orders that are already setup are not impacted, but new orders cannot be created anymore.
 - Inventory movement transactions are allowed (warning message)



35

2016 | CONTROLLING

Impact of Material Status on Order Creation (Example)

- When material status is 10 (Material under setup) production order should not be allowed to be created
 - Flag "B" (error) is set for this combination in OMS4
 - When a user tries to create an order from transaction COR1 or via the MRP run, an error message will be returned
- When material status is 20 (Development phase) production order should be allowed to be created, but with a warning message to the user
 - Flag "A" (warning) is set for this combination in OMS4
 - COR1 / MRP run will issue a warning message
- When material status is 30 (Commercial production) production order should be allowed to be created, with no messages
 - Flag "<blank>" (no message) is set for this combination in OMS4
- When material status is 40 (No production, deplete stock) production order should not be allowed to be created anymore.
 - Flag "B" (error) is set for production order in OMS4
 - COR1 / MRP run will issue an error message

36

2016 | CONTROLLING

Material Status Setup: Table T141 View / Explanation

- Indicative setup of material status, table T141 view and explanation of headers
 - Overview of which transactions are allowed or disallowed for the given material status and its corresponding business function
 - Transactions impacted are listed in the bottom row

Data Browser: Table T141: 5 of 5 Hits

MS Description	Pu	BH	BI	RR	IR	RP	PN	PH	PM	IM	Fo	PRT	QMI	TR	TOr	CE	LP
10 Material under setup	A	A	A	A	A	A	B	B	B	B	A	B		B	B		B
20 Development phase	A	A	A	A	A	A	A	A	B	B	A	B		B	B		B
30 Commercial production																	
40 No production, deplete stk	B	B	B	B	A	A	B	B		A	A	B		A	A		B
50 Obsolete, deletion flag	B	B	B	B	B	B	B	B		B	B	B		B	B	D	B

Material Status	Material Description	Purchasing	BOM header	BOM item	Routing / master recipe	Ind. Reqmt	MSP	PO/network	PO header	Plant Maintenance	Inventory	Forecasting msg	Production Resource Tool msg	QM Inspection	Transfer requirement	Transfer order	Mat. Cost Estimate Procedure	Long Term Planning
10	Material under setup	Warning	Warning	Warning	Warning	Warning	Warning	Error	Error	Error	Error	Warning	Error	No message	Error	Error	Cost Material	Error
20	Development phase	Warning	Warning	Warning	Warning	Warning	Warning	Warning	Warning	Error	Error	Warning	Error	No message	Error	Error	Cost Material	Error
30	Commercial production	No message	No message	No message	No message	No message	No message	No message	No message	No message	No message	No message	No message	No message	No message	No message	Cost Material	No message
40	No production, deplete stk	Error	Error	Error	Error	Warning	Warning	Error	Error	No message	Warning	Warning	Error	No message	Warning	Warning	Cost Material	Error
50	Obsolete, deletion flag	Error	Error	Error	Error	Error	Error	Error	Error	No message	Error	Error	Error	No message	Error	Error	Do Not Cost Material: Issue Error if Material Component	Error
Impacted Transaction		ME21N	CS01	CS02	CO01	MD11	MD04	COR1	COR1	IW31	MI00	MP30	CF01	QA01	LB01	LT01	CK11N	MS01

37

Topics

- Troubleshoot product costing messages
- Evaluate the right Cost Object for you
- Utilize Material Status
- **Analyze MM-FI Accounting Flow**
- Summary

38

MM-FI: Movement Types and Accounting Entries

- **OBYC MM-FI account determination forms the core of SAP's integration**
- **Summary of movement types and accounting entries**

Movement Types and Accounting Entries

Process	Movement Type - Description	Transaction-Account Modifier	Debit GL	Debit GL Description	Transaction-Account Modifier	Credit GL	Credit GL Description
Purchase of Raw Material	101 - Goods receipt for Purchase Order	BSX	300000	Inventory - Raw Material	WRX	191100	Goods Received / Invoice Received
Consumption of Raw Materials to Process Order	261 - Goods issue for order	GBB-VBR	400010	Raw materials consumed	BSX	300000	Inventory - Raw Material
Production of Semi-Finished Materials for Process Order	101 - Goods receipt for Process Order	BSX	790000	Unfinished products	GBB-AUF	895000	Factory output of production orders
Consumption of Semi-Finished Materials to Process Order	261 - Goods issue for order	GBB-VBR	890000	Semi-finished products consumed	BSX	790000	Unfinished products
Production of Finished Materials for Process Order	101 - Goods receipt for Process Order	BSX	792000	Finished goods inventory	GBB-AUF	895000	Factory output of production orders
Sampling for Quality Inspection	331 - Goods issue to sampling Quality Inspection	GBB-VQP	237000	Losses - consumption of quality control	BSX	792000	Finished goods inventory
Sale of Finished Material	601 - Goods issue: delivery	GBB-VAX	892000	Change in finished products inventory	BSX	792000	Finished goods inventory
Scrapping of Finished Material	551 - Goods issue for scrapping	GBB-VNG	890001	Scrapped material - own production	BSX	792000	Finished goods inventory
Cycle Count (Physical Inventory) of Finished Material	701 - Goods receipt for physical inventory adjustment	BSX	792000	Finished goods inventory	GBB-INV	233000	Losses - inventory variance
Initial Inventory Load of Finished Material	561 - Initial entry of stock balances	BSX	792000	Finished goods inventory	GBB-BSA	799999	Inventory migration
Consumption of Raw Material from Sub-Contractor stock (special stock "0")	543 - Goods issue from stock at sub-contractor	GBB-VBO	400010	Raw materials consumed	BSX	300000	Inventory - Raw Material
Production of Finished Goods by Sub-Contractor (Production)	101 - Goods receipt from sub-contractor	BSX	792000	Finished goods inventory	BSV	893010	Sub-contract stock change
Production of Finished Goods by Sub-Contractor (Tolling Fee)	101 - Goods receipt from sub-contractor	FRL	417001	Purchased services	WRX	191100	Goods Rcvd/Invoice Rcvd

39

2016 | CONTROLLING

MM-FI Accounting Flow

- **Transaction-account modifier and valuation class drive the accounting entries**
 - **Transaction key:** determines general ledger accounts for posting
 - **Account modifier:** differentiates account determination based on procedure
 - **Transaction keys** are predefined in the SAP system and cannot be changed
- **Purchase of raw materials:**
 - **Configuration setup of transaction BSX (inventory posting) is responsible for the inventory posting; WRX (GR/IR clearing account) for GR/IR posting**
 - **When movement type 101 is used to record goods receipt for a purchase order of raw material (valuation class 3000), the system looks up the GL account for transaction BSX and WRX for valuation class 3000 and records in the accounting**
- **Consumption of raw materials:**
 - **When raw material is consumed using movement type 261, the system looks up transaction GBB (offsetting entry for inventory posting) for account modifier VBR (consumption for internal goods issues) and records GL account in accounting**

40

2016 | CONTROLLING

Topics

- Troubleshoot product costing messages
- Evaluate the right Cost Object for you
- Utilize Material Status
- Analyze MM-FI Accounting Flow
- **Summary**

41

2016 | CONTROLLING

Resources

- **Expert Tips to Unleash the Full Potential of SAP Controlling**
 - Author: Ashish Sampat, Publisher: Espresso Tutorials
 - Fall 2016 release
- **First Steps in SAP Controlling (CO)**
 - Author: Ashish Sampat, Publisher: Espresso Tutorials
 - https://espresso-tutorials.com/Controlling_S0069.php
- **Get answers to the top 9 SAP Controlling questions**
 - Several authors, Publisher: ERP Corp
 - <http://www.erpcorp.com/learn-more-about-controlling-2016-lp2/>

42

2016 | CONTROLLING

Key Ideas

- Review message categories to troubleshoot costing messages
- Evaluate cost objects, prerequisites, order types, transactions
- Use Material Status to control logistics transactions
- Analyze MM-FI flow with transaction key / account modifiers

43

2016 | CONTROLLING

Questions

- ashish.sampat@vthinkinc.com
- sampat_ashish@hotmail.com
- <https://www.linkedin.com/in/sampatashish>



44

2016 | CONTROLLING

Controlling 2016 Conference

- **September 12-15, 2016 in San Diego**
- **Ashish Sampat to present:**
 - **Expert tips to boost productivity in SAP Controlling**
 - **Case Study: How Mondelez International effectively tracks costs and variances**
- **Sydney McConnell to present:**
 - **Case Study: How Woodward improved SAP BPC performance**
- **<http://controlling.erpcorp.com/>**
- **Register by August 31 and save \$500 off the onsite price**

45

2016 | CONTROLLING

2016 | CONTROLLING
SEPTEMBER 12-15 • SAN DIEGO

Disclaimer

SAP®, R/3, mySAP, mySAP.com, xApps, xApp, SAP NetWeaver®, Duet®, PartnerEdge, and other SAP® products and services mentioned herein as well as their respective logos are trademarks or registered trademarks of SAP AG in Germany and in several other countries all over the world. All other product and service names mentioned are the trademarks of their respective companies. ERP Corp is neither owned nor controlled by SAP.