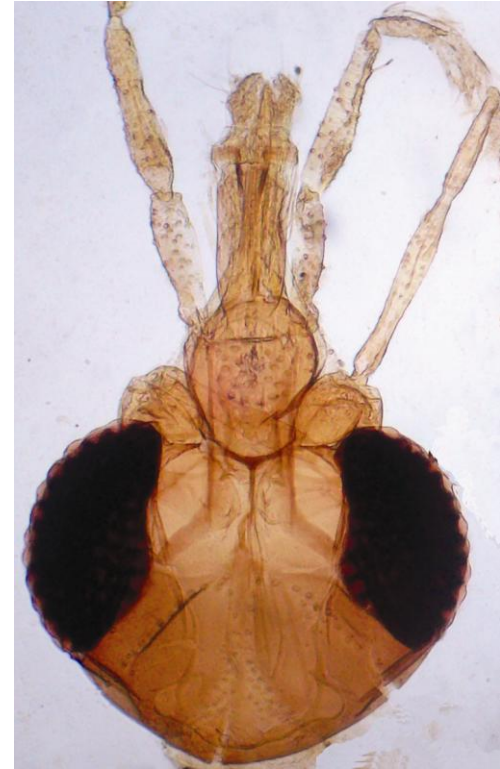


## POSTERS

**Fig :1 *Se. (Vij.) barshi***

**Male Ventral view of head, 20x.**

Illustration with Camera Lucida an  
Optical Initiation and Colour figures by  
Digital Camera Canon 10 MP with  
Olympus Microscope,  
(Fig: 1 to 10 with Digital Camera Canon  
and Fig 11 to 24 with Camera Lucida.  
*Sergentomyia (Vijaia barshi) sp.nov.*



152.0µm

**Fig :2 *Se. (Vij.) barshi***

Male Terminalia with light brown in colour. Style with four long spines with triangular plate near the base of coxite and paramere aedeagus two lobes dark brown and surstyles with strongly well developed and base with two thick band, 20x.



**Fig : 3 *Se. (Vij.) barshi***

Male Cibarium with patchy teeth about two rows, 40x .



175.0µm