



Crowdsourced Doppler measurements of time standard stations demonstrating ionospheric variability

Kristina Collins¹, John Gibbons¹, Nathaniel Frissell^{2,4}, Aidan Montare³, David Kazdan¹, Darren Kalmbach⁴, David Swartz⁴, Robert Benedict⁴, Veronica Romanek², Rachel Boedicker¹, William Liles^{4,6}, William Engelke⁵, David G. McGaw⁷, James Farmer⁴, Gary Mikitin⁴, Joseph Hobart⁴, George Kavanagh⁴, and Shibaji Chakraborty⁸

¹Case Western Reserve University, Glennan Building 9A, 10900 Euclid Avenue, Cleveland, Ohio 44106, USA

²Department of Physics and Engineering, University of Scranton, Scranton, PA, USA

³National Institute of Standards and Technology, Boulder, CO, USA

⁴HamSCI Community, <https://www.hamsci.org>

⁵Center for Advanced Public Safety (CAPS), University of Alabama, Tuscaloosa, AL, USA

⁶Liles Innovations LLC, Reston, VA, USA

⁷Department of Physics and Astronomy, Dartmouth College, Hanover, NH, USA

⁸Center for Space Science and Engineering Research, Virginia Tech, Blacksburg, VA, USA

Correspondence: Kristina Collins (kd8ox@case.edu)

Received: 27 August 2022 – Discussion started: 27 October 2022

Revised: 14 February 2023 – Accepted: 26 February 2023 – Published: 28 March 2023

Abstract. Ionospheric variability produces measurable effects in Doppler shift of HF (high-frequency, 3–30 MHz) skywave signals. These effects are straightforward to measure with low-cost equipment and are conducive to citizen science campaigns. The low-cost Personal Space Weather Station (PSWS) network is a modular network of community-maintained, open-source receivers, which measure Doppler shift in the precise carrier signals of time standard stations. The primary goal of this paper is to explain the types of measurements this instrument can make and some of its use cases, demonstrating its role as the building block for a large-scale ionospheric and HF propagation measurement network which complements existing professional networks. Here, data from the PSWS network are presented for a period of time spanning late 2019 to early 2022. Software tools for the visualization and analysis of this living dataset are also discussed and provided. These tools are robust to data interruptions and to the addition, removal or modification of stations, allowing both short- and long-term visualization at higher density and faster cadence than other methods. These data may be used to supplement observations made with other geospace instruments in event-based analyses, e.g., traveling ionospheric disturbances and solar flares, and to assess the accuracy of the bottomside estimates of ionospheric models by comparing the oblique paths obtained by ionospheric ray tracers with those obtained by these receivers. The data are archived at <https://doi.org/10.5281/zenodo.6622111> (Collins, 2022).

1 Introduction

HF (high-frequency, 3–30 MHz) Doppler sounding is an established means of observing the bottomside ionosphere. Its principle of operation is straightforward: a shift in signal path length effects a corresponding Doppler shift. This information may be integrated with other ionospheric measurements

to examine ionospheric variability resulting from geophysical events.

The Doppler shift f_D in a received signal may be expressed as the time derivative of the phase path of the radio

signal. After Chum et al. (2018),

$$f_D = -2 \cdot \frac{f}{c} \frac{d}{dt} \left(\int_0^{z_R} n \cdot dr \right) = -2 \cdot \frac{f}{c} \int_0^{z_R} \frac{\partial n}{\partial N} \cdot \frac{\partial N}{\partial t} \cdot dr, \quad (1)$$

where c is the speed of light, n is the real part of refractive index for electromagnetic waves, N is the electron (plasma) density, and z_R is the height of reflection. This methodology is well established in the scientific literature (Breit and Tuve, 1925; Davies et al., 1962; Jacobs and Watanabe, 1966).

In recent years, enabling technologies have become prevalent which reduce the barriers to performing precise Doppler measurements. In particular, single-board computing greatly reduces the expense and difficulty of data logging, and readily available GPS-disciplined oscillators (GPSDOs) allow for precision timing at a price point on the order of USD 100. The price burden for this method is also reduced by the use of existing time standard stations, such as WWV, WWVH, and CHU. These stations broadcast national standard time via AM signals with precisely controlled carriers, providing ideal signals of opportunity.

Accordingly, it is now tenable to create distributed systems of HF Doppler receivers which serve as a meta-instrument for the observation of ionospheric disturbances, either in short-term campaigns such as the one recorded in Collins et al. (2022) or in long-term data collection such as in the dataset presented herein. Such systems are readily supported by citizen scientists in the amateur radio and shortwave listening communities (Collins et al., 2021; Frissell et al., 2022b).

These data are useful to geospace scientists seeking to build a more complete picture of short-term events (lasting hours to days) which occurred during the recorded time frame, such as solar flares and geomagnetic storms. Today, frontier science investigations in these fields generally rely on combining observations from multiple instrument platforms, including total electron content estimations derived from the Global Navigation Satellite System (GNSS TEC) (Vierinen et al., 2016), incoherent scatter radar (ISR) (Nicolls and Heinselman, 2007; Zhang et al., 2021), Super Dual Auroral Radar Network (SuperDARN) radar (Nishitani et al., 2019), and vertical ionosondes (Hunsucker, 1991; Scotto et al., 2012), among others. Oblique HF sounders such as the ones used in this dataset represent one of many tools for the multi-instrument observer and can provide direct benefit to these investigations. To wit, satellite measurements (e.g., GNSS TEC) produce height-integrated measurements from the bottomside to topside of the ionosphere, whereas the Personal Space Weather Station (PSWS) measures bottomside variability. ISRs yield range-resolved measurements of plasma parameters throughout the ionosphere but have limited geographic coverage and cannot run constantly, primarily due to high cost of both installation and operation. While SuperDARN radars are well established and measure parameters of the bottomside ionosphere that cannot be measured

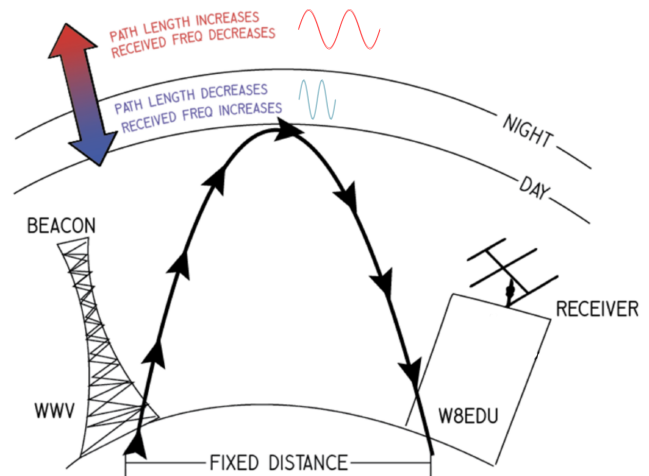


Figure 1. A simplified illustration of the relationship between rate of change in ionospheric layer height and received frequency shift. Precision frequency standards are required at both beacon and receiver in order to make an effective comparison. Frequency variation is generally on the order of ± 1 Hz. Multihop propagation (multiple reflections between ionosphere and ground), Pedersen modes (internal ionospheric reflections), asymmetric paths, and other factors impacting path length are not shown. Reproduced from Collins et al. (2022).

by the PSWS, SuperDARN is a pulsed system and typically has at best a 1 min cadence. Ionosondes, too, generally have slower cadence (3–15 min). Vertical ionosondes produce bottomside vertical profiles for a single site. Oblique ionosondes share a measurement geometry with the Grape but sweep in frequency, whereas the Grape monitors a single frequency with essentially continuous time resolution, which allows for monitoring short-timescale ionospheric variability along a single path. A key advantage of the PSWS is its low cost, which allows for flexible and dynamic deployment of stations in regions of interest. It is also the most analogous to an HF communication system, which supports application-driven monitoring of propagation conditions.

Further insights may also be developed by examination of multiyear trends. As discussed in Sect. 4.3, seasonal variations are clearly evident in the longest datasets collected at the time of writing. As observations continue throughout solar cycle 25, we expect that these Doppler data, recorded at a greater level of coordination in the long term than has generally been achieved in the past, will support or yield novel analyses of seasonal ionospheric variability.

2 Background

Understanding ionospheric variability remains a frontier topic in the space physics community. This variability is key not only to understanding ionospheric dynamics in its own right but also as a means to understanding the coupled geospace system as a whole, which includes the ionosphere's

connection to both space above and the neutral atmosphere below. Ionospheric variability takes on many forms and arises from many sources. Some forms are better understood than others. Sources of variability from space include solar flares that last minutes (e.g., Dellinger, 1937; Benson, 1964; and Chakraborty et al., 2018, 2021), substorms that last a few hours (e.g., Gjerloev et al., 2007; Blagoveshchenskii, 2013; and Hori et al., 2018), and ionospheric and geomagnetic storms that can last days (e.g., Buonsanto, 1999; Pröls, 2008; and Thomas et al., 2016). Sources of variability from below include traveling ionospheric disturbances (TIDs) associated with atmospheric gravity waves (AGWs) (e.g., Hines, 1960, and Hunsucker, 1982). These are associated with terrestrial weather patterns and may be caused by events such as tornadoes (Nishioka et al., 2013), tsunamis (Galvan et al., 2011; Huba et al., 2015), or high-latitude sources (Grocott et al., 2013; Frissell et al., 2016).

To understand this variability, it is important to measure over both large spatial and temporal domains and with high resolution. While many large-scale professional ionospheric sensing networks exist, the ionosphere remains significantly undersampled. To help address this undersampling issue, members of the Ham Radio Science Citizen Investigation (HamSCI) collective are working to develop the Personal Space Weather Station (PSWS), a modular, multi-instrument, ground-based space science observation platform that can be operated and afforded by individuals, as described in Collins et al. (2021, 2022). The low-cost version of the PSWS is known as the Grape, documented by Gibbons et al. (2022). The Grape is a narrowband, high-frequency (HF) receiver that observes ionospheric variability by measuring the Doppler shift of signals emitted by highly stable transmitters, such as WWV and WWVH operated by the US National Institute of Standards and Technology (NIST) and CHU operated by the Institute for National Measurement Standards of the National Research Council of Canada.

The Doppler shift mechanism is illustrated in Fig. 1. Here, WWV transmits an HF signal that is refracted by the ionosphere back to Earth, where it is received by station W8EDU. Ionospheric variability related to peak layer height, peak layer electron density, and/or layer thickness can cause changes in the propagation path that are sensed as positive Doppler shifts for decreasing path lengths (blueshifts) and negative Doppler shifts for increasing path lengths (redshifts) (Lynn, 2009). Doppler shift variations can also be used to measure the period, wavelength, and direction of TIDs (Georges, 1968; Crowley and Rodrigues, 2012; Chilcote et al., 2015; Trop et al., 2021; Trop, 2021; Romanek et al., 2022).

3 Methodology

3.1 Hardware

The majority of stations in this dataset use the purpose-built Grape V1, a low-cost receiver described by Gibbons et al. (2022). This is a low- to intermediate-frequency receiver optimized for Doppler measurements.

It is also possible to use the software components with other hardware: as noted in the `nodelist.csv` file in the software repository, which is included in abridged form in Table A1, some of the registered nodes collect data using commercial off-the-shelf (COTS) amateur radio receivers which are capable of accepting an external frequency input from, e.g., GPS-disciplined oscillators. Citizen scientists from the amateur radio and shortwave listening communities can therefore leverage their existing hardware to contribute to the PSWS network at no additional cost and with no license requirement. The data processing framework of the Personal Space Weather Station network is robust to the addition and modification of new nodes and to data outages. Data collected up to 1 June 2022 are represented in the data inventory shown in Fig. 4.

3.2 Data acquisition process

The process of data curation is depicted in Fig. 2. Each station collects 24 h datasets according to an established standard and uploads them on a daily basis to a central FTP server. Test files, corrupted files, and spurious uploads are eliminated, and the data are consolidated into a single *.zip file, which is posted to the data repository (Collins, 2022). While the size of the final *.zip file varies according to the number of stations collecting data, the efficiency of compression, and other factors, it is on the order of a few gigabytes. The updated dataset can then be downloaded from Zenodo to a subdirectory in the code repository (Frissell et al., 2022a) and used to create updated versions of the visualizations discussed in this paper.

3.3 File format and description

An example file is shown in Appendix C, which shows a file with the corresponding filename `2020-07-09TT002940Z_N0000001_G1_EN91fh_FRQ_WWV5.csv`. This filename includes, in order, the date the data were collected and the UTC time at which that collection began; the node number, corresponding to the list in Table A1; the type of radio being used (e.g., “G1” indicates Grape version 1); the Maidenhead grid square in which the data were recorded; and the time standard station being measured. A detailed description of the file format and upload process is available from Gibbons et al. (2021). Metadata at the beginning of each file record station information, including room for comments. The main

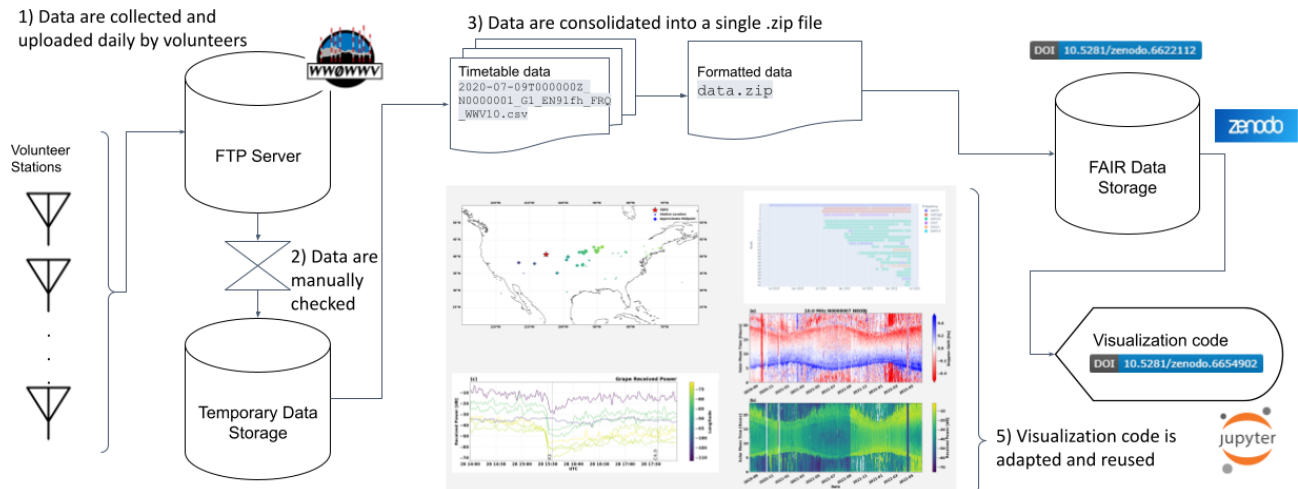


Figure 2. A graphical abstract showing how the data are collected, as described in Sect. 3.2. The visualization figures are rendered at full scale elsewhere in this paper.

table has three columns: UTC time, estimated frequency, and received power.

4 Data visualization

The visualization code in Frissell et al. (2022a) allows for the dynamic visualization of station availability and datasets. Results can be examined on scales ranging from seconds to years, for one station in isolation or in comparison to others. Examples of this visualization code are given below. Section 4.1 describes the map and Gantt chart which summarize where and when station data are available for a given period of time. Section 4.2 and 4.3, respectively, demonstrate short- and long-term analyses of data from a single station. Subsequent sections focus on the detection of geophysical signatures: Sect. 4.4 demonstrates the detection of signatures consistent with traveling ionospheric disturbances, while Sect. 4.5 showcases the detection of solar flares by multiple Grape stations.

4.1 Station availability

A map of stations to date is shown in Fig. 3. Stations were chosen on a volunteer basis, with some (e.g., Node 18 in California) specifically recruited to improve coverage. Clusters of stations are evident around universities involved in the project: Case Western Reserve University in Cleveland, the University of Scranton in Pennsylvania, and the New Jersey Institute of Technology each have a collection of nodes belonging to researchers. An additional cluster is generated by volunteers of the New England amateur radio community. There are also nodes close to WWV in the Fort Collins area, Colorado (e.g., Node 13), which are within the transmitter's radio horizon and can be used to confirm that trends in the

data originate with the ionosphere and not the radio transmitters.

Several stations are registered as nodes but do not have data included in the dataset reported at the time of writing. This may be for one of three reasons: first, the station may have data recorded but not uploaded to the FTP server; second, the station may be in the process of installing a node; and third, the station may be used for experimentation with new data collection methods, including spectrum sampling and other frequency analysis algorithms. A central aspect of this work is its architecture as a living dataset, i.e., a dataset into which new stations and historic data may be easily incorporated.

Figure 4 shows the data collected by each node over time. The network is modular: new stations can easily be added, and data analysis procedures are tolerant of outages and changes in frequency for each node.

4.2 Daily plots

As illustrated in Fig. 1, electron density in the ionosphere increases during the day as a result of photoionization and decreases at night due to recombination (Davies, 1990), producing a recognizable trend in Doppler plots. Confirming this diel variation (i.e., checking for a sunrise peak) is recommended by Gibbons et al. (2022) as a benchmark for an operator to ensure that the trends observed in their station's data are geophysical in nature.

The plotting routine automatically computes the local sunrise and sunset for a given station location and shades the background accordingly. An example of data collected by Node 1 is shown in Fig. 5. The output produces two plots: Doppler shift on the top and amplitude on the bottom. In each case, the raw data, scatter-plotted in blue, undergo filtering to produce the filtered result, which is overlaid in yel-

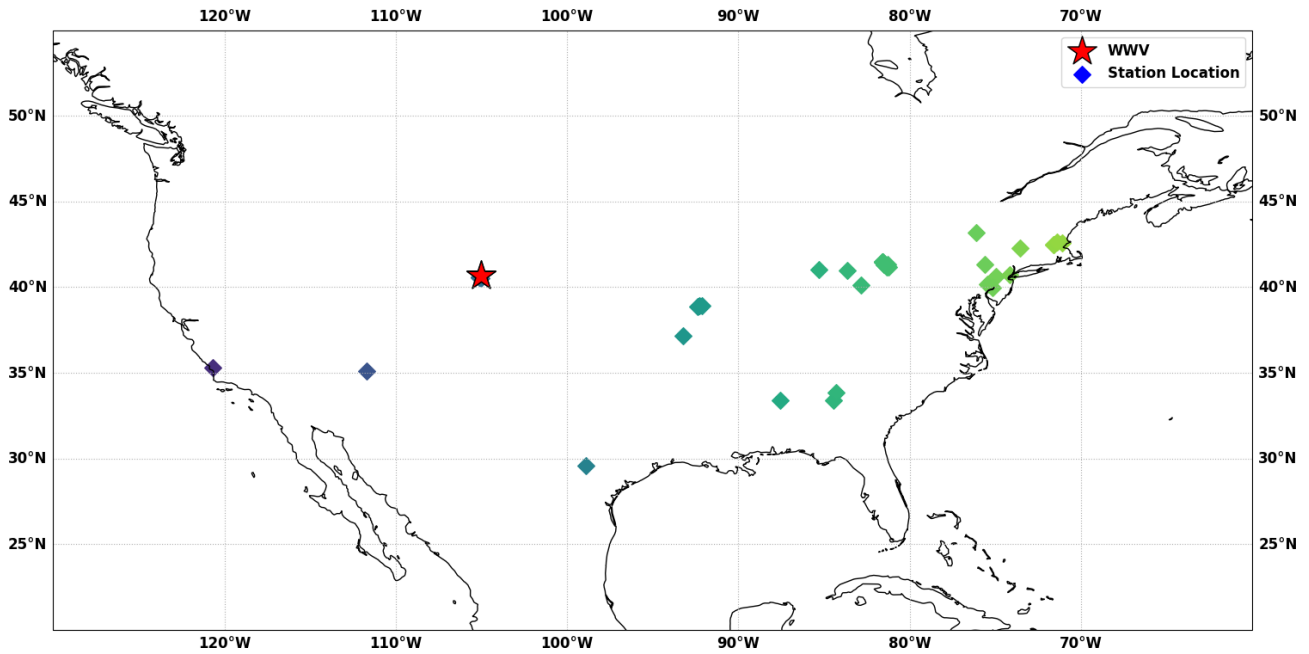


Figure 3. A map of currently deployed Grape stations in the United States. Per Table A1, some international stations are not shown. Scatter points mark the locations of each station. Points are color-coded by station longitude.

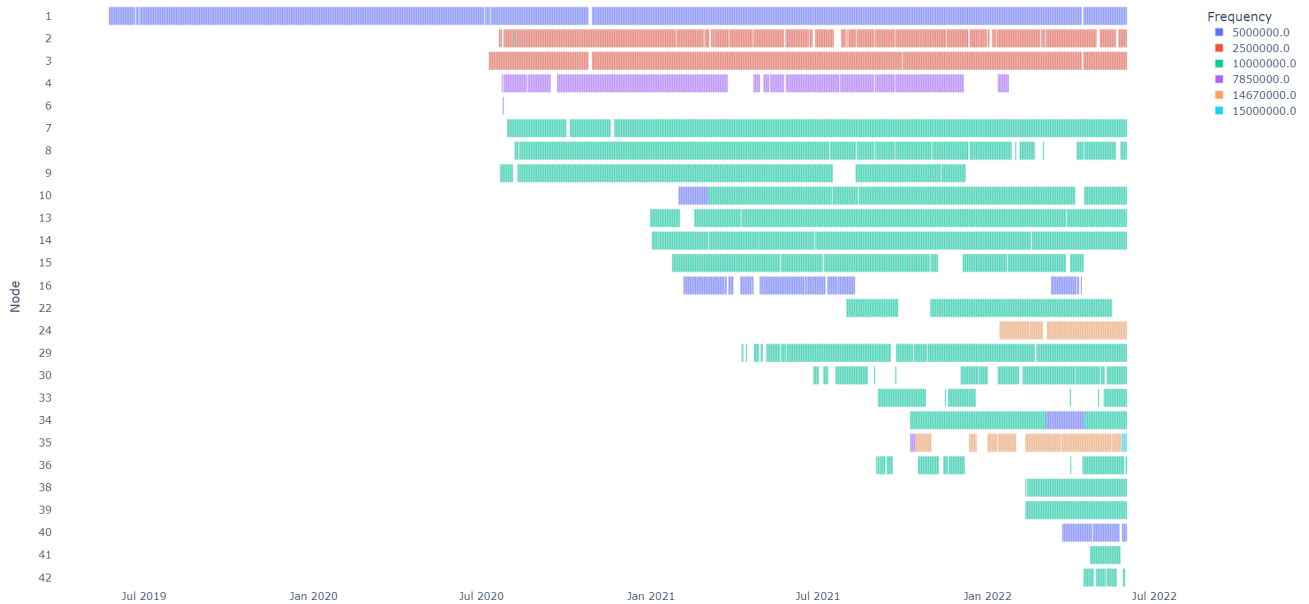


Figure 4. A data inventory, produced with a Gantt plotting tool in Plotly Express (Plotly Technologies, 2015), showing the data collected by each node.

low. By default, the data processing uses a sixth-order Butterworth low-pass filter with a cutoff frequency of 5 mHz ($T_c \approx 3.33$ min). A similar plotting routine is used to provide station maintainers with daily feedback, as described and depicted in Figs. 10–13 of Gibbons et al. (2022). Diel fluctuations vary with local conditions but are distinct in long-term

data, as discussed in Sect. 4.3. Figure 5 also shows a Doppler flash, which is discussed in Sect. 4.5.

4.3 Seasonal climatology

Long-term trends in the data of Node 7 are shown in the time–date–parameter plots of Fig. 6. Two plots are shown: Doppler shift in hertz using a red–blue divergent color map

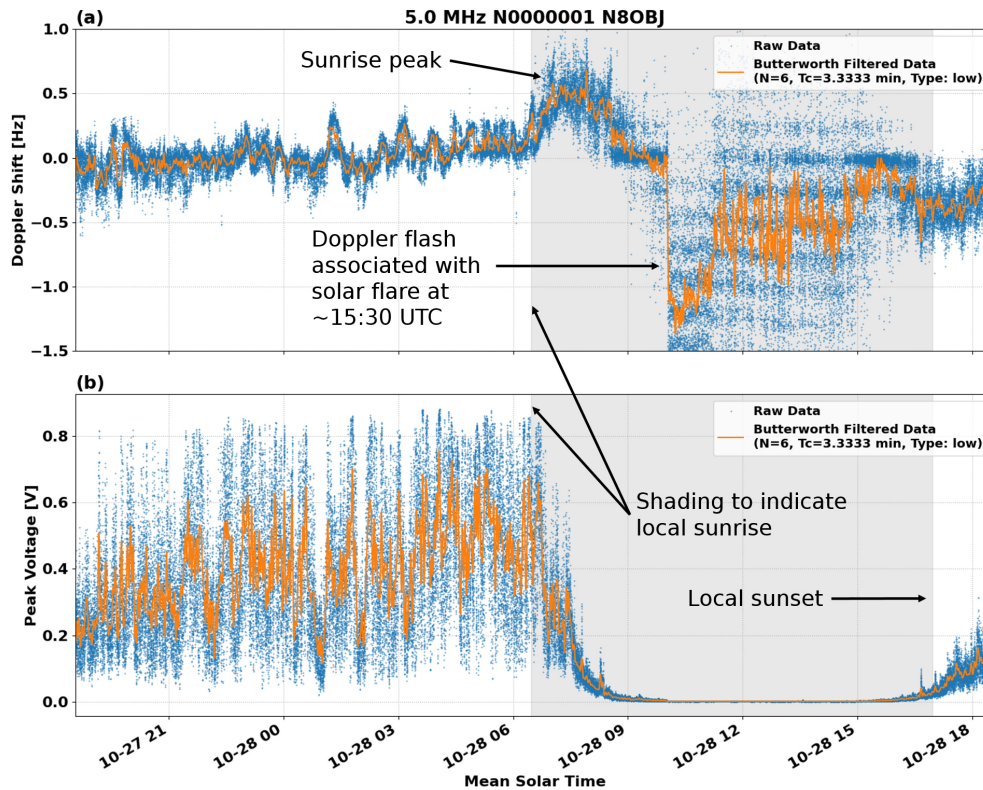


Figure 5. Annotated frequency and amplitude plots of Node 1's 5 MHz data from 28 October 2021, with sunrise and sunset indicated by background shading. The filtered result is superimposed on the raw data. The sunrise peak described in Gibbons et al. (2022) is clearly visible. The horizontal axis is plotted in mean solar time, rather than UTC, in order to emphasize diel effects. A Doppler flash associated with an X-class solar flare, discussed in Sect. 4.5, is evident around 15:30 UTC.

(see Appendix B) and received power in decibels. Each day is represented by a column of pixels, with corresponding solar mean time lined up across the plots horizontally and time's arrow running from bottom to top. On the horizontal axis, time's arrow runs left to right, covering a span from mid-2020 to spring 2022. This is consistent with the computed sun graph of Fig. 7. Several observations, both geophysical and instrumentation-related in nature, can be gleaned from these two plots. First, the seasonal movement of sunrise and sunset is clearly visible at the bottom and top of the frequency plot respectively. The amplitude plot on the bottom demonstrates that reception from WWV to this station's location in the Cleveland area is much better during the nighttime, when the F2 layer of the ionosphere allows a propagation path to open up between the two locations. Vertical stripes toward the left side of both plots indicate changes or gaps in instrumentation, which are also reflected in the metadata for the affected time period. In this station's case, the station maintainer recorded a change of antenna at their station on 26 August 2021, when they switched from an off-center-fed (OCF) dipole to a magnetic loop antenna with a preamplifier. This change produced an overall increase of received power, which is clearly visible in the power plot. The lack of a corresponding change in the frequency plot above it indicates that

the frequency estimation algorithm was able to function well with either antenna.

4.4 Traveling ionospheric disturbances

One category of ionospheric phenomena of particular interest for the PSWS network is medium-scale traveling ionospheric disturbances (MSTIDs), defined by Hunsucker (1982) as wavelike perturbations of ionospheric plasma with wavelengths of hundreds of kilometers, phase velocities of hundreds of meters per second, and periods between 10 min and 1 h. While MSTIDs may be associated with either atmospheric gravity waves (AGWs) from the neutral atmosphere (e.g., Hines, 1960; Bristow et al., 1994; Frisell et al., 2016) or from electrodynamic processes (e.g., Kelley, 2011; Atilaw et al., 2021), the source of MSTIDs is still not well understood due to their ubiquitous nature and the complexities of atmosphere–ionosphere coupling.

Trop et al. (2021) and Trop (2021) developed a technique to estimate TID period, speed, propagation direction, and velocity from a network of AM broadcast band Doppler receivers described by Chilcote et al. (2015); at the time of writing, this technique is being developed for use with HF data from the PSWS network by Romanek et al. (2022).

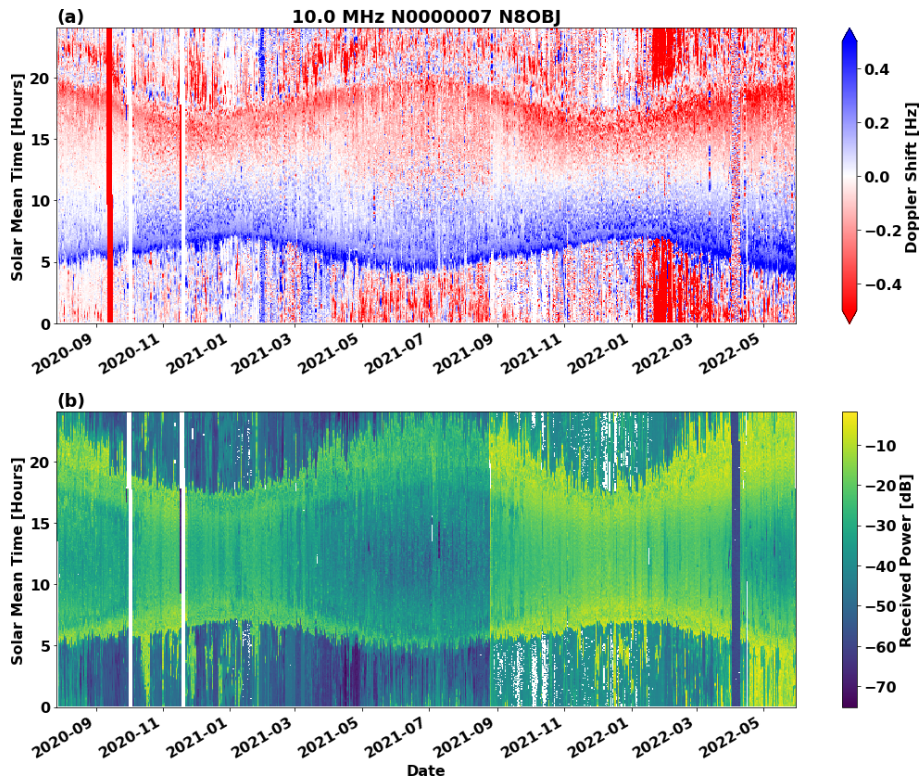


Figure 6. Heat maps of frequency (a) and amplitude (b) at Node 7. Each day represents a line of pixels from top to bottom, with corresponding UTC times lined up across the plots horizontally. Diel variation, and the seasonal shift of sunrise and sunset times per Fig. 7, is clearly visible in both plots. A new antenna and preamplifier were installed on 26 August 2021, resulting in higher received power.

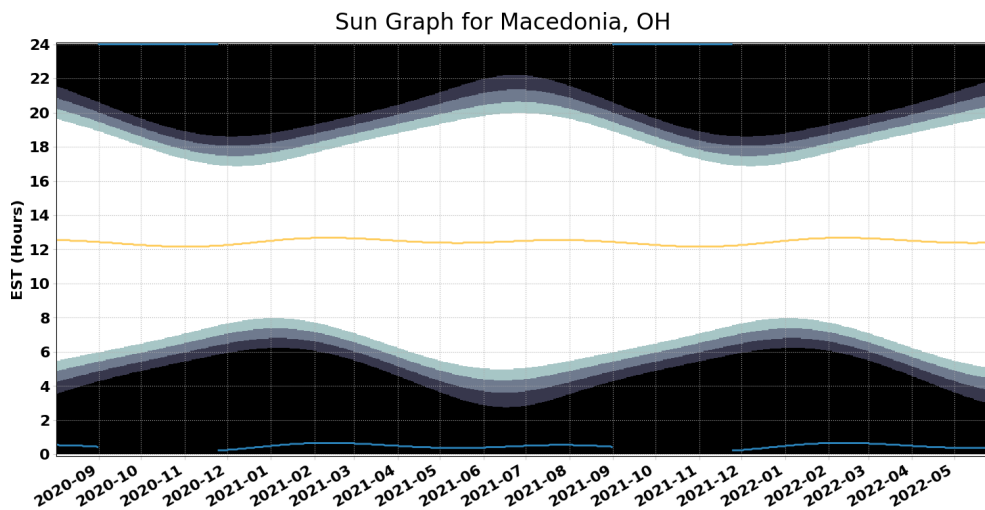


Figure 7. A sun graph showing sunrise and sunset times at the location of Node 7, which corresponds to the measured variation in Fig. 6 (Price-Whelan, 2022).

Figure 8a is generated using the same standard processing as Fig. 5. Next, the data are interpolated and filtered with a 0.5–1.2 mHz ($T = 14\text{--}33$ min) bandpass to isolate the dominant MSTID, similar to the approach used in Sect. 3.1.2 of Frissell et al. (2014). The output is then separated into 4 h

bins with a 90 % overlap and plotted as a spectrogram in Fig. 8b, which shows signatures consistent with MSTIDs.

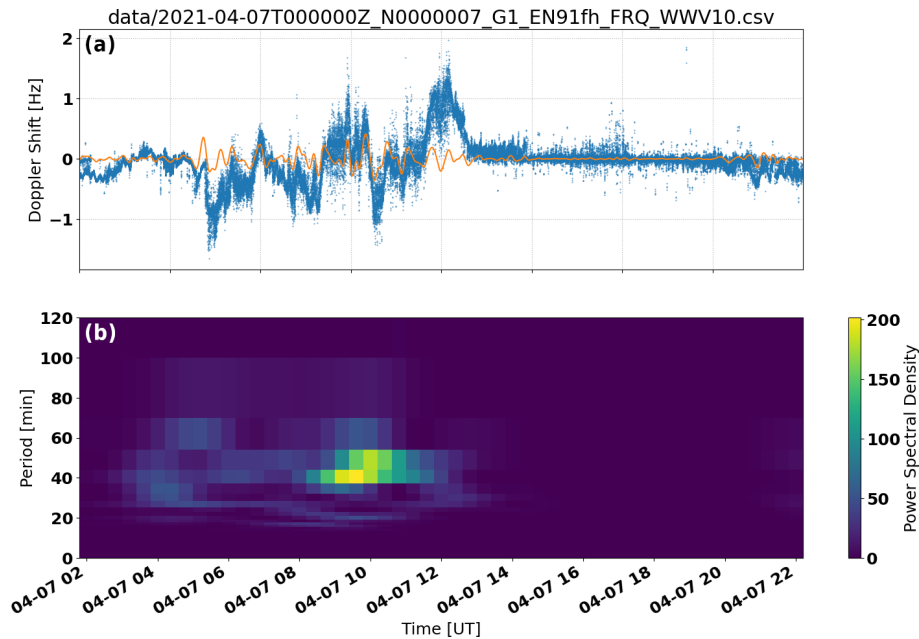


Figure 8. Observations of the 10 MHz WWV signal (Ft. Collins, CO) received by a Grape receiver located near Cleveland, OH, on 7 April 2021 from 02:00–22:00 UT. **(a)** Time series of received 10 MHz Doppler shifts. Blue dots show raw observations, and the orange trace shows data filtered with a 15–60 min digital bandpass Butterworth filter. **(b)** Spectrogram showing power spectral density (PSD) of the filtered data from the top panel. The oscillations and enhanced PSD in the 15–60 min band observed between \sim 03:30 and \sim 12:00 UT are consistent with signatures of medium-scale traveling ionospheric disturbances.

4.5 Ionospheric response to solar flares

Figure 9 shows the response of the network to solar flares on 28 October 2021, providing an example of a multi-instrument measurement which demonstrates how the PSWS may augment and be validated by existing professional networks. The top plot gives the X-ray irradiance as measured by NOAA’s GOES-17 spacecraft, with two flares marked: an X-class solar flare with a maximum at 15:35 UTC and a smaller, C-class flare about 2 h later. Figure 9b shows the Doppler shift for eight stations from the day in question, color-mapped by station longitude; below it, Fig. 9c shows the relative received power for the same stations. A longitude-dependent Doppler flash (Chakraborty et al., 2021) is observed in the frequency plot in conjunction with each flare, and a radio blackout following the X1 flare is observed in the power plot. (The lone exception, Node 13, is the groundwave station near WWV.) This Doppler flash was also measured by the SuperDARN at Fort Hays, KS, as shown in Fig. 10, albeit at a slower cadence than the Grape measurements.

By default, no scaling is applied in the received power plot of Fig. 9c. As discussed in Sect. 5.1, received signal strength varies with the antenna but may not impact the accuracy of the estimated frequency. Additionally, the PSWS nodes which use commercial off-the-shelf (COTS) hardware rather than Grape receivers (see Table A1) may have an automatic gain control (AGC) which impacts the utility of the power measurement. Therefore, users are encouraged to begin by

examining the raw data from an event of interest before applying scaling.

5 Discussion

5.1 Sources of uncertainty

WWV’s transmitter is well characterized and inherently accurate, with a measured carrier stability below one part in 10^{12} (Lombardi, 2023). Allan deviation analysis by Lombardi (2022) demonstrates that the Grape V1 receiver recovers frequency with an upper bound of 2 ppb (2×10^{-10}). Further, Lombardi (2022) performs calibration of the Leo Bodnar GPSDO recommended by Gibbons et al. (2022) and demonstrates that, with a frequency stability of one part in 10^{12} over a 1 d interval, it contributes no discernible measurement uncertainty.

Between transmitter and receiver, the received power varies according to location, antenna gain, and atmospheric attenuation. For example, in Fig. 6, the antenna replacement which took place at that station in August 2021 distinctly impacts the power plot but has relatively little impact on the frequency estimation. Because the frequency and power are logged together in the raw data, the end user may elect to discard or replace frequencies where the logged power is below a threshold of their choosing. Even a low-amplitude signal may yield viable frequency estimation data, however, as shown in Fig. 5.

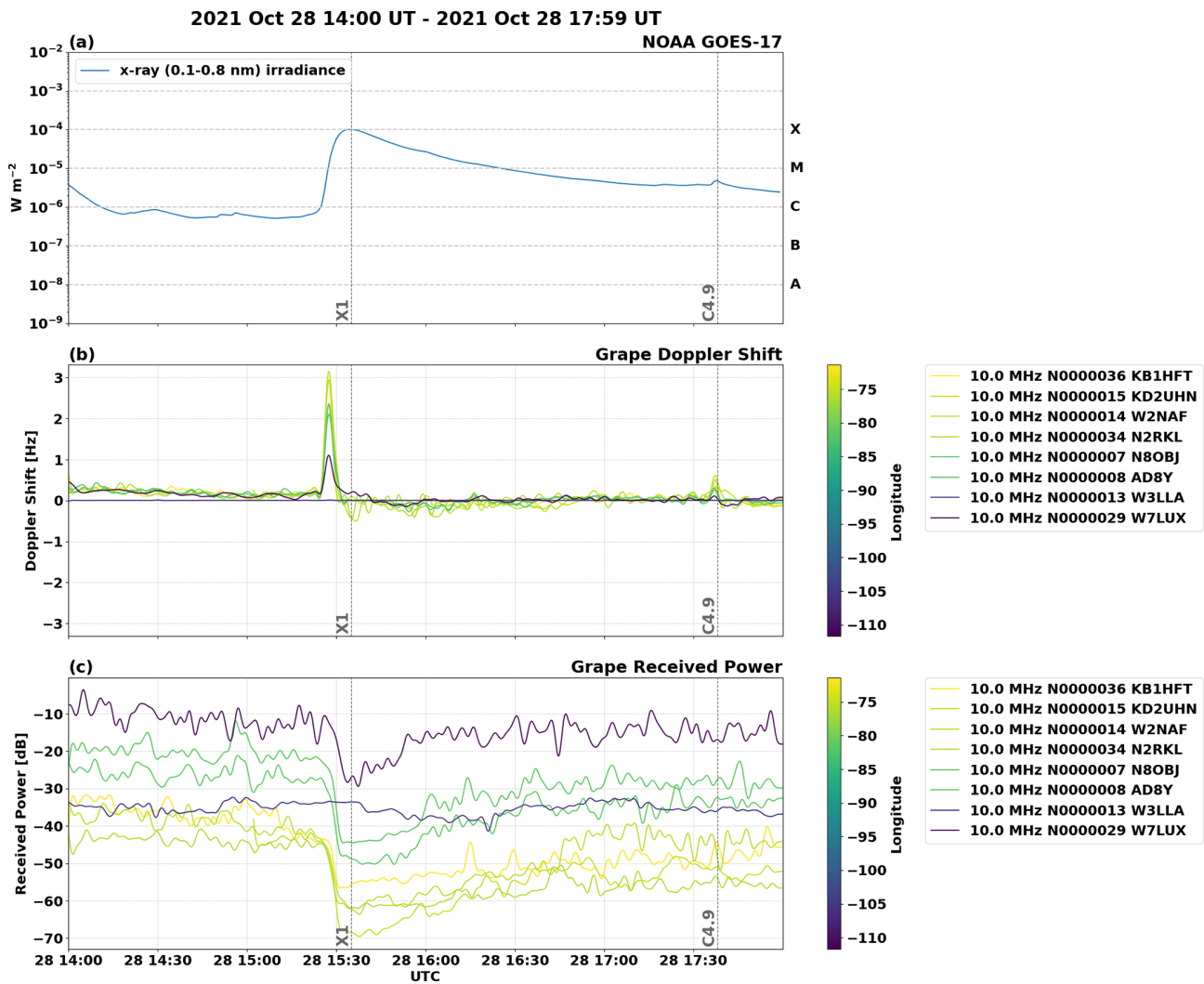


Figure 9. Annotated frequency and amplitude plots showing the response of Grape stations on 10 MHz to an X1 solar flare on 28 October 2021. The single-node measurement of this event on 5 MHz in Fig. 5 is corroborated by other nodes in the Grape network, as well as by the SuperDARN measurement in Fig. 10.

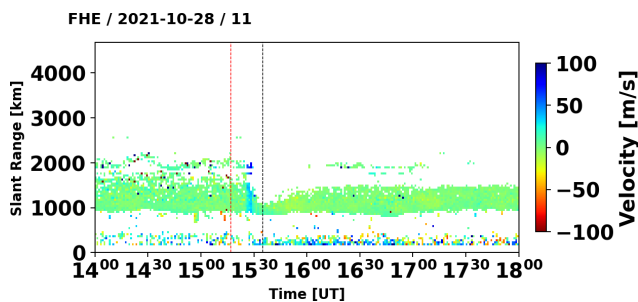


Figure 10. SuperDARN observation of the 28 October 2021 Doppler flash by Fort Hays East radar, beam 11. The vertical red and black lines are the start and peak of the flare respectively. The sudden rise of velocity at $\sim 15:27$ UT is the Doppler flash measured in Figs. 5 and 9.

Trends observed by the network may therefore reasonably be considered to be of geophysical origin, albeit the result of multiple causes. Quantifying these ionospheric propagation effects is beyond the scope of this paper. Instead, this paper will allow investigations of these effects in the future through comparisons with other instruments and data–model comparisons.

5.2 Validation

We have provided comparison to prior products (e.g., Breit and Tuve, 1925; Davies et al., 1962; Jacobs and Watanabe, 1966; Collins et al., 2022), event-based validation from alternate sources (GOES-17 and SuperDARN, per Figs. 9 and 10 respectively), comparison of measured diel variation to

model outcome (Figs. 6 and 7), and initial records of sensors (see Figs. 5, 9).

5.3 Citizen science

The definition of citizen science has evolved over time, and the PSWS network, which invites significant personal investment and involvement from network participants, hews more closely to the “co-created” models of intensive citizen science projects, in which participants play an active role in shaping all levels of the work, than it does to “contributory” models which emphasize crowdsourced data collection (Wiggins and Crowston, 2011).

The Personal Space Weather Station exemplifies the key elements of citizen science projects identified by Pandya and Dibner (2018). They emphasize that participants in citizen science projects are primarily not project-relevant scientists; indeed, the majority of nodes in Table A1 are maintained by volunteers with no financial or academic connection to the project. Pandya and Dibner (2018) also note that citizen science projects actively engage participants, engage those participants with data, and enable those participants to derive benefit from their participation: these aspects of the PSWS are attested to by Benedict and Waugh (2021). Finally, they note that citizen science projects use a systematic approach to producing reliable knowledge, help advance science, and communicate results, all aspects which are supported by this paper.

The indispensable participation of the amateur radio and shortwave listening communities in these efforts is part of a citizen science legacy in those communities which dates back to the dawn of radio (Yeang, 2013) and continues to the present day (Collins et al., 2021).

6 Conclusions

1. *We present a living dataset of HF Doppler measurements made by citizen scientists.* These measurements are conducted using time standard stations’ carrier signals as precise HF beacons. The amplitude and estimated Doppler shift are recorded at approximately a 1 s cadence by each station. Outages and nonstandard start times are automatically handled within the file format.
2. *A modular framework is presented for the visualization and analysis of these data.* Per the “Code and data availability” section, the code used to prepare the figures in this paper is made available for the reader’s use. This code may be used to visualize future versions of the dataset as well. Additional nodes may be added to the primary dataset by coordination with the authors.
3. *Doppler data reveal both short-term and multiyear trends in ionospheric variability.* Exemplars include Figs. 6 and 9 above. These data may be used in conjunc-

tion with other measurements to address frontier questions in geospace science using a multi-instrument approach.

7 Code and data availability

The figures in this paper were produced using Python code and Jupyter Notebooks available at https://github.com/HamSCI/hamsci_psws (last access: 17 March 2023) and <https://doi.org/10.5281/zenodo.6654901> (FrisSELL et al., 2022a). The data are available at <https://doi.org/10.5281/zenodo.6590283> (Collins, 2022). The Grape V1 hardware is fully documented in Gibbons et al. (2022), and the files to reproduce that hardware are available at <https://doi.org/10.17632/NBBHY2YXMZ.1> (Gibbons et al., 2021).

8 Future work

To date, the PSWS network comprises a growing, self-sustaining community of station maintainers. The authors foresee two means of extending this network in the future, both of which have been instrumental in fostering it to date: first, the grassroots adoption of the system by self-motivated participants, generally through amateur radio clubs; and second, the targeted recruitment of station maintainers in regions of interest, particularly ahead of upcoming solar eclipses.

At the time of writing, the majority of stations are in the continental United States, but there is no inherent limitation of the system that dictates its range. The network is not limited only to Grape V1 hardware, nor to the exclusive use of WWV or other time standard stations as beacon signals. The flexible metadata format described above allows for independent signals on the amateur radio bands to be used in participatory campaigns and for these data to be integrated seamlessly into future versions of this dataset.

Efforts are also underway to develop multichannel versions of the Grape hardware, as well as wider spectral recording to support the analysis of multiple carrier signals associated with multiple simultaneous propagation paths.

By making these data permanently accessible to professional and citizen scientists, and by continuing data collection with a growing network of stations through cycle 25 and beyond (MacDonald et al., 2022), we hope to produce a record of short-term events and seasonal variability which will inform future studies of solar flare responses, MSTIDs, and other phenomena and which will form a benchmark for the validation of simulated Doppler shift in ionospheric models.

Appendix A: Table of Grape stations

Registered nodes at the time of writing are listed in Table A1.

Table A1. Table of registered nodes at the time of writing. n/a: not applicable.

Node	Call sign	Name	Grid square	Latitude	Longitude	Elev. (m)	Radio	Antenna	System
1	N8OBJ	John C. Gibbons	EN91fh	41.32	-81.50	285	Grape Gen 1	DX Eng RF-PRO-1B Mag Loop w/ N8OBJ preamp	RasPi3B+, Fldigi 4.1.13
2	AD8Y	David Kazdan	EN91fl	41.49	-81.57	300	ICOM IC-7610	n/a	RasPi3B+, Fldigi 4.1.13
3	N8OBJ	John C. Gibbons	EN91fh	41.32	-81.50	285	Grape Gen 1	DX Eng RF-PRO-1B Mag Loop w/ N8OBJ preamp	RasPi3B+, Fldigi 4.1.13
4	AD8Y	David Kazdan	EN91fl	41.49	-81.57	300	Grape Gen 1	n/a	RasPi3B+, Fldigi 4.1.13
5	KE8HPA	Frankie Bonte	EN80nd	40.13	-82.84	275	DXF1200	n/a	RasPi3B+, Fldigi 4.1.09
6	KD8OXT	Kristina Collins	EN91fl	41.49	-81.57	300	DXF1200	n/a	RasPi3B+, Fldigi 4.1.09
7	N8OBJ	John C. Gibbons	EN91fh	41.32	-81.50	285	Grape Gen 1	DX Eng RF-PRO-1B Mag Loop w/ N8OBJ preamp	RasPi3B+, Fldigi 4.1.13
8	AD8Y	David Kazdan	EN91fl	41.49	-81.57	300	Grape Gen 1	n/a	RasPi3B+, Fldigi 4.1.13
9	KB3UMD	Aidan Montare	FN20ge	40.17	-75.49	75	Grape Gen 1	n/a	RasPi4B, Fldigi 4.1.13
10	KD8SYG	James Niemann	EN91ii	41.35	-81.28	330	Grape Gen 1	G5RV 80 m ~31 m long	RasPi4B, Fldigi 4.1.13
11	N8OBJ	John C. Gibbons	n/a	0.00	0.00	0	Grape Gen 1	n/a	RasPi4B, Fldigi 4.1.13
12	WA5FRF	Steve Cervin	EL09nn	29.57	-98.88	412	ICOM IC-7610 and R8600	30, 40, and 160 m dipoles	Spectrum Lab, Fldigi 4.1.14
13	W3LLA	Maxwell Moran	DL70ln	40.54	-105.04	1511	Yaesu FT-817 wLBG-PSDO	Wire	RasPi4B, Fldigi 4.1.13
14	W2NAF	Nathaniel A. Frissell	FN21ei	41.33	-75.60	0	Grape Gen 1	n/a	RasPi4B, Fldigi 4.1.13
15	KD2UHN	Veronica Romanek	FN20mp	40.63	-74.98	136	Grape Gen 1	80 m OCF dipole	RasPi4B, Fldigi 4.1.13
16	WW0WVW	David A. Swartz	DN70kn	40.56	-105.11	1546	Grape Gen 1	20 m vertical	RasPi4B, Fldigi 4.1.13
17	WA2UAR	Jay Silber	FM29jw	39.95	-75.17	3	Grape Gen 1	HD6-160 screwdriver	RasPi4B, Fldigi 4.1.13
18	W6BHZ	Ethan Yoshio Kita (Cal Poly)	CM95qh	35.30	-120.66	0	Grape Gen 1	n/a	RasPi4B, Fldigi 4.1.13
19	AB4EJ	Bill Engelke	EM63fj	33.39	-87.54	110	Grape Gen 1	Hexbeam to 80 m dipole	RasPi4B, Fldigi 4.1.13
20	K2MFF	Gareth Perry	FN20vr	40.74	-74.17	50	Grape Gen 1	Inverted V	RasPi4B, Fldigi 4.1.13
21	KV0S	Dave Larsen	EM38tv	38.89	-92.35	220	n/a	n/a	n/a
22	KD8CGH	Robert Benedict	EN91he	41.19	-81.33	300	Grape Gen 1	tuned small loop	RasPi4B, Fldigi 4.1.13
23	KD0EAG	Dave Witten	EM38uw	38.92	-92.29	220	No_Radio1	No_Antenna	RasPi-4, 5.4.51-v71+
24	PA0SLT	Wim Apon	JO33kg	53.28	6.90	0	Grape Gen 1	n/a	RasPi4B, Fldigi 4.1.13
25	K2KGJ	Julius Madey	FN32fg	42.26	-73.54	372	n/a	n/a	n/a
26	KE8QEP	David A. Waugh	EN91id	41.15	-81.25	334	Grape Gen 1	Tuned horiz. dipole 3 m above ground	RasPi4B, Fldigi 4.1.13
27	W0DAS	David A. Swartz	DN70kn	40.56	-105.10	1546	Grape Gen 1	30 m dipole	RasPi4B, Fldigi 4.1.13
28	N1UBJ	William P. N. Smith	FN42kn	42.56	-71.09	31	Grape Gen 1	40 m Homebrew dipole	RasPi4B, Fldigi 4.1.13
29	W7LUX	Joseph R. Hobart	DM45dc	35.09	-111.69	2091	n/a	n/a	n/a
30	K4BSE	Jim Farmer	EM73sj	33.39	-84.47	240	Grape Gen 1 Rcvr 1	loop	RasPi4B, Fldigi 4.1.13
31	W1MTI	Vladimir A. Goncharov	FN42fl	42.49	-71.58	100	Grape Gen 1 Rcvr 1	long wire	RasPi4B, Fldigi 4.1.13
32	AD0RR	Todd Christell	EM37je	37.18	-93.23	382	n/a	30 m dipole	n/a
33	AB1XB	Bill Blackwell	FN42el	42.49	-71.59	137	Grape Gen 1 Rcvr 1	30 m dipole	RasPi4B, Fldigi V4.1.13
34	N2RKL	Bill Owens	FN13wd	43.16	-76.12	120	Grape Gen 1 Rcvr 1	magnetic loop	RasPi4B, Fldigi V4.1.13
35	PA0RWT	Robert Wagenvoort	JO33lg	53.25	6.95	-2	Flex 1500	Active E-field probe; MiniWhip	RasPi3B+, Fldigi 4.1.13
36	KB1HFT	George Kavanagh	FN42hp	42.63	-71.38	150	Grape Gen 1 Rcvr 1	40 m inverted V	RasPi4B, Raspbian OS, Fldigi V4.1.13
37	N8OBJ	John C. Gibbons	EN91fh	41.32	-81.50	285	Grape Gen 2	DX Eng RF-PRO-1B Mag Loop w/ N8OBJ preamp	RasPi4B
38	WCOY	Edward Hall (Ward)	EN71ia	41.019	-85.29	237	Grape Gen 1 Rcvr 1	EWE wire	RasPi4B, Raspbian OS, Fldigi V4.1.13
39	KM4YMI	Beau Bruce	EM73ut	33.83	-84.28	316	Grape Gen 1 Rcvr 1	tuned loop	RasPi3B+, Raspbian OS, Fldigi V4.1.13
40	AC0G	Michael James Hauan	EM38ww	38.91	-92.12	264	OpenHPSDR	wire antenna	RasPi3B+, Raspbian OS, Fldigi V4.1.13
41	N8ET	Bill Kelsey	EN80ex	40.99	-83.65	243	Grape Gen 1 Rcvr 1	30 m vertical	RasPi4B, Raspbian OS, Fldigi V4.1.13

Appendix B: Supplemental color maps

The red–blue color map used for the frequency plot in Fig. 6 is not colorblind-compliant. This color map (`bwr_r` from Gao et al. (2015)) was chosen because it conceptually relates red and blue to red shift and blue shift and because as a divergent color map (saturation is lowest at times of minimal change in virtual layer height and highest at times of maximal change) it is well suited to the data. Finding a divergent color map which is colorblind-compliant, however, is extremely difficult, and it is not possible to ensure that it will universally meet the needs of all colorblind readers. Therefore, to improve accessibility for these plots, we have included explicit lines in the code for setting the color map using Matplotlib's color map functions. We encourage the reader to review Matplotlib's documentation at <https://matplotlib.org/stable/tutorials/colors/colormaps.html> (last access: 17 March 2023) to find an effective color map for their needs and to change the `bwr_r` color map for another as required. A version of the Doppler heat map using the viridis color map is shown in Fig. B1.

Additionally, the Colormoves interface described by Samse et al. (2018) and available at <http://sciviscolor.org> (last access: 17 March 2023) allows for real-time construction and modification of color maps using a drag-and-drop interface.

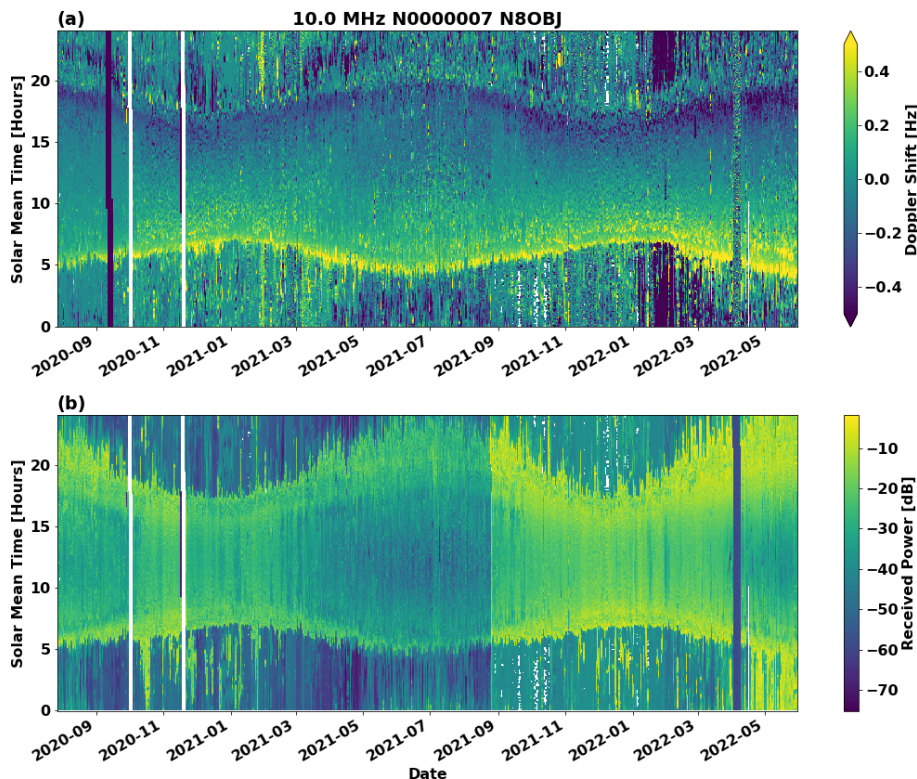


Figure B1. A version of Fig. 6 using the perceptually uniform viridis color map.

Appendix C: Example file

The following is an example of a 1d data file with integrated metadata. This file has the file-name 2020-07-09TT002940Z_N0000001_G1_EN91fh_FRQ_WWV5.csv. The file contents are self-documenting.

```
#,2020-07-09T00:29:40Z,N00001,EN91fh,41.3219273, -81.5047731, 285,Macedonia Ohio,G1,WWV5

#####
# MetaData for Grape Gen 1 Station
#
# Station Node Number      N00001
# Callsign                 N8OBJ
# Grid Square              EN91fh
# Lat, Long, Elv          41.3219273, -81.5047731, 285

# City State               Macedonia Ohio
# Radiol                  Grape Gen 1 Rcvr 1

# RadiolID                 G1
# Antenna                  135 Foot OCF Dipole 30 Feet up

# Frequency Standard      LB GPSDO
# System Info              RasPi3B+, Raspian OS, Fldigi V4.1.13 (N8OBJ Modified)

#
# Beacon Now Decoded      WWV5
#
#####
UTC,Freq,Vpk
00:29:42, 4999999.902, 0.026468
00:29:43, 4999999.849, 0.053155
00:29:44, 4999999.838, 0.067245
00:29:45, 4999999.773, 0.065578
00:29:46, 4999999.759, 0.061869
00:29:47, 4999999.735, 0.057743
00:29:48, 4999999.800, 0.063838
00:29:49, 4999999.956, 0.088436
00:29:50, 4999999.949, 0.107922
00:29:51, 4999999.964, 0.122666
00:29:52, 4999999.956, 0.134292
```

Author contributions. KC: conceptualization, software, data curation, writing (original draft, review, and editing), investigation, formal analysis, visualization, and project administration. JG: hardware, software, methodology, investigation, resources, and project administration. NF: conceptualization, software, visualization, formal analysis, investigation, supervision, funding acquisition, and writing (original draft). AM: software, methodology, and investigation. DavK: conceptualization, methodology, and investigation. DarK: software, data curation, and resources. DS: project administration and investigation. RoB: investigation, software, and visualization. VR: investigation and formal analysis. ReB: investigation. WL: investigation and formal analysis. WE: software and writing (revision). DGM: writing (review and editing). JF: validation, investigation, and writing (review and editing). GM: validation, investigation, and writing (review and editing). JH: validation, investigation, and writing (review and editing). GK: investigation and writing (review and editing). SC: investigation, writing (review and editing), and visualization.

Disclaimer. This work was undertaken through the Ham Radio Science Citizen Investigation (<http://www.hamsci.org>, last access: 17 March 2023). Where possible, amateur radio call signs are used herein, in addition to names, in order to specify individuals and club stations. Because these call signs are unique and persistent identifiers, they support the “Findable” criterion of FAIR data principles. The authors’ call signs are KD8OXT, N8OBJ, W2NAF, KB3UMD, AD8Y, KC0ZIE, W0DAS, KD8CGH, KD2UHN, AC8XY, NQ6Z, AB4EJ, N1HAC, K4BSE, AF8A, W7LUX, KB1HFT, and KN4BMT respectively.

Publisher’s note: Copernicus Publications remains neutral with regard to jurisdictional claims in published maps and institutional affiliations.

Competing interests. The contact author has declared that none of the authors has any competing interests.

Acknowledgements. This work was undertaken through the HamSCI community (<http://www.hamsci.org>, last access: 17 March 2023). We thank our volunteers for giving generously of their time and expertise, particularly the maintainers of the first

contingent of Grape stations for pioneering the PSWS network and the members of the WWV Amateur Radio Club, WW0WWV, for their support with data curation. Hardware was constructed in the Sears Undergraduate Design Laboratory and think[box] at Case Western Reserve University, with support from the Case Amateur Radio Club, W8EDU. Fast Light Digital Modem Application (Fldigi) is maintained by David Freese, W1HKJ. We thank the developers of all Python packages and open-source software projects used in the analysis code documented here. This work made use of Astropy, <http://www.astropy.org> (last access: 17 March 2023), a community-developed core Python package and an ecosystem of tools and resources for astronomy (Astropy Collaboration et al., 2013, 2018, 2022). The authors acknowledge the use of SuperDARN data. SuperDARN is a collection of radars funded by national scientific funding agencies of Australia, Canada, China, France, Italy, Japan, Norway, South Africa, the United Kingdom, and the United States of America. We thank the reviewers for evaluating and improving this paper. Mike Lombardi, K0WWX, made significant contributions during the revision phase. Finally, we thank the staff of WWV, WWVH, and CHU, without whom this work would not be possible.

Financial support. This research has been supported by the Division of Atmospheric and Geospace Sciences (grant nos. AGS-1932972, AGS-1932997, AGS-2002278, AGS-2230345, and AGS-2230346).

Review statement. This paper was edited by David Carlson and reviewed by two anonymous referees.

References

- Astropy Collaboration, Robitaille, T. P., Tollerud, E. J., Greenfield, P., Droettboom, M., Bray, E., Aldcroft, T., Davis, M., Ginsburg, A., Price-Whelan, A. M., Kerzendorf, W. E., Conley, A., Crighton, N., Barbary, K., Muna, D., Ferguson, H., Grollier, F., Parikh, M. M., Nair, P. H., Unther, H. M., Deil, C., Woillez, J., Conseil, S., Kramer, R., Turner, J. E. H., Singer, L., Fox, R., Weaver, B. A., Zabalza, V., Edwards, Z. I., Azalee Bostroem, K., Burke, D. J., Casey, A. R., Crawford, S. M., Dencheva, N., Ely, J., Jenness, T., Labrie, K., Lim, P. L., Pierfederici, F., Pontzen, A., Ptak, A., Refsdal, B., Servillat, M., and Streicher, O.: Astropy: A community Python package for astronomy, *Astronom. Astrophys.*, 558, A33, <https://doi.org/10.1051/0004-6361/201322068>, 2013.
- Astropy Collaboration, Price-Whelan, A. M., Sipőcz, B. M., Günther, H. M., Lim, P. L., Crawford, S. M., Conseil, S., Shupe, D. L., Craig, M. W., Dencheva, N., Ginsburg, A., VanderPlas, J. T., Bradley, L. D., Pérez-Suárez, D., de Val-Borro, M., Aldcroft, T. L., Cruz, K. L., Robitaille, T. P., Tollerud, E. J., Ardelean, C., Babej, T., Bach, Y. P., Bachetti, M., Bakanov, A. V., Bamford, S. P., Barentsen, G., Barmby, P., Baumbach, A., Berry, K. L., Biscani, F., Boquien, M., Bostroem, K. A., Bouma, L. G., Brammer, G. B., Bray, E. M., Breytenbach, H., Buddelmeijer, H., Burke, D. J., Calderone, G., Cano Rodríguez, J. L., Cara, M., Cardoso, J. V. M., Cheedella, S., Copin, Y., Corrales, L., Crichton, D., D’Avella, D., Deil, C., Depagne, É., Dietrich, J. P., Donath, A., Droettboom, M., Earl, N., Erben, T., Fabbro, S., Ferreira, L. A., Finethy, T., Fox, R. T., Garrison, L. H., Gibbons, S. L. J., Goldstein, D. A., Gommers, R., Greco, J. P., Greenfield, P., Groener, A. M., Grollier, F., Hagen, A., Hirst, P., Homeier, D., Horton, A. J., Hosseinzadeh, G., Hu, L., Hunkeler, J. S., Ivezić, Ž., Jain, A., Jenness, T., Kanarek, G., Kendrew, S., Kern, N. S., Kerzendorf, W. E., Khvalko, A., King, J., Kirkby, D., Kulkarni, A. M., Kumar, A., Lee, A., Lenz, D., Littlefair, S. P., Ma, Z., Macleod, D. M., Mastroiello, M., McCully, C., Montagnac, S., Morris, B. M., Mueller, M., Mumford, S. J., Muna, D., Murphy, N. A., Nelson, S., Nguyen, G. H., Ninan, J. P., Nöthe, M., Ogaz, S., Oh, S., Parejko, J. K., Parley, N., Pascual, S., Patil, R., Patil, A. A., Plunkett, A. L., Prochaska, J. X., Rastogi, T., Reddy Janga, V., Sabater, J., Sakurikar, P., Seifert, M., Sherbert, L. E., Sherwood-Taylor, H., Shih, A. Y., Sick, J., Silbiger, M. T., Singanamalla, S., Singer, L. P., Sladen, P. H., Sooley, K. A., Sornarajah, S., Streicher, O., Teuben, P., Thomas, S. W., Tremblay, G. R., Turner, J. E. H., Terrón, V., van Kerkwijk, M. H., de la Vega, A., Watkins, L. L., Weaver, B. A., Whitmore, J. B., Woillez, J., Zabalza, V., and Astropy Contributors: The Astropy Project: Building an Open-science Project and Status of the v2.0 Core Package, *Astronom. J.*, 156, 123, <https://doi.org/10.3847/1538-3881/aabc4f>, 2018.
- Astropy Collaboration, Price-Whelan, A. M., Lim, P. L., Earl, N., Starkman, N., Bradley, L., Shupe, D. L., Patil, A. A., Corrales, L., Brasseur, C. E., Nöthe, M., Donath, A., Tollerud, E., Morris, B. M., Ginsburg, A., Vaher, E., Weaver, B. A., Tocknell, J., Jamieson, W., van Kerkwijk, M. H., Robitaille, T. P., Merry, B., Bachetti, M., Günther, H. M., Aldcroft, T. L., Alvarado-Montes, J. A., Archibald, A. M., Bodi, A., Bapat, S., Barentsen, G., Baz’an, J., Biswas, M., Boquien, M., Burke, D. J., Cara, D., Cara, M., Conroy, K. E., Conseil, S., Craig, M. W., Cross, R. M., Cruz, K. L., D’Eugenio, F., Dencheva, N., Devillepoix, H. A. R., Dietrich, J. P., Eigenbrot, A. D., Erben, T., Ferreira, L., Foreman-Mackey, D., Fox, R., Freij, N., Garg, S., Geda, R., Glattry, L., Gondhalekar, Y., Gordon, K. D., Grant, D., Greenfield, P., Groener, A. M., Guest, S., Gurovich, S., Handberg, R., Hart, A., Hatfield-Dodds, Z., Homeier, D., Hosseinzadeh, G., Jenness, T., Jones, C. K., Joseph, P., Kalmbach, J. B., Karamehmetoglu, E., Kaluszyński, M., Kelley, M. S. P., Kern, N., Kerzendorf, W. E., Koch, E. W., Kulamani, S., Lee, A., Ly, C., Ma, Z., MacBride, C., Maljaars, J. M., Muna, D., Murphy, N. A., Norman, H., O’Steen, R., Oman, K. A., Pacifici, C., Pascual, S., Pascual-Granado, J., Patil, R. R., Perren, G. I., Pickering, T. E., Rastogi, T., Roulston, B. R., Ryan, D. F., Rykoff, E. S., Sabater, J., Sakurikar, P., Salgado, J., Sanghi, A., Saunders, N., Savchenko, V., Schwardt, L., Seifert-Eckert, M., Shih, A. Y., Jain, A. S., Shukla, G., Sick, J., Simpson, C., Singanamalla, S., Singer, L. P., Singhal, J., Sinha, M., Sipőcz, B. M., Spitler, L. R., Stansby, D., Streicher, O., Sumak, J., Swinbank, J. D., Taranu, D. S., Tewary, N., Tremblay, G. R., Val-Borro, M. D., Van Kooten, S. J., Vasović, Z., Verma, S., de Miranda Cardoso, J. V., Williams, P. K. G., Wilson, T. J., Winkel, B., Wood-Vasey, W. M., Xue, R., Yoachim, P., Zhang, C., Zonca, A., and Astropy Project Contributors: The Astropy Project: Sustaining and Growing a Community-oriented Open-source Project and the Latest Major Release (v5.0) of the Core Package, *Astrophys. J.*, 935, 167, <https://doi.org/10.3847/1538-4357/ac7c74>, 2022.

- Atilaw, T. Y., Stephenson, J. A., and Katamzi-Joseph, Z. T.: Multitaper analysis of an MSTID event above Antarctica on 17 March 2013, *Polar Sci.*, 28, 100643, <https://doi.org/10.1016/j.polar.2021.100643>, 2021.
- Benedict, R. and Waugh, D. A.: Construction and operation of a HamSCI Grape version 1 Personal Space Weather Station: A citizen scientist's perspective, ARRL-TAPR, Virtual, <https://youtu.be/MHkz7jNynOg?t=12718> (last access: 17 March 2023), 2021.
- Benson, R. F.: Electron collision frequency in the ionospheric D region, *Radio Sci.*, 68D, 1123–1126, 1964.
- Blagoveshchenskii, D. V.: Effect of geomagnetic storms (substorms) on the ionosphere: 1. A review, *Geomagn. Aeronomy*, 53, 275–290, <https://doi.org/10.1134/S0016793213030031>, 2013.
- Breit, G. and Tuve, M. A.: A Radio Method of Estimating the Height of the Conducting Layer, *Nature*, 116, 357–357, <https://doi.org/10.1038/116357a0>, 1925.
- Bristow, W., Greenwald, R., and Samson, J.: Identification of high-latitude acoustic gravity wave sources using the Goose Bay HF radar, *J. Geophys. Res.-Space Phys.*, 99, 319–331, 1994.
- Buonsanto, M. J.: Ionospheric Storms – A Review, *Space Sci. Rev.*, 88, 563–601, <https://doi.org/10.1023/A:1005107532631>, 1999.
- Chakraborty, S., Ruohoniemi, J. M., Baker, J. B. H., and Nishitani, N.: Characterization of Short-Wave Fadeout Seen in Day-time {SuperDARN} Ground Scatter Observations, *Radio Sci.*, 53, 472–484, <https://doi.org/10.1002/2017RS006488>, 2018.
- Chakraborty, S., Ruohoniemi, J. M., Baker, J. B., Fiori, R. A., Bailey, S. M., and Zawdie, K. A.: Ionospheric Sluggishness: A Characteristic Time-Lag of the Ionospheric Response to Solar Flares, *J. Geophys. Res.-Space Phys.*, 126, e2020JA028813, <https://doi.org/10.1029/2020JA028813>, 2021.
- Chilcote, M., LaBelle, J., Lind, F. D., Coster, A. J., Miller, E. S., Galkin, I. A., and Weatherwax, A. T.: Detection of traveling ionospheric disturbances by medium-frequency Doppler sounding using AM radio transmissions, *Radio Sci.*, 50, 249–263, <https://doi.org/10.1002/2014RS005617>, 2015.
- Chum, J., Urbář, J., Laštovička, J., Cabrera, M. A., Liu, J.-Y., Bonomi, F. A. M., Fagre, M., Fišer, J., and Mošna, Z.: Continuous Doppler sounding of the ionosphere during solar flares, *Earth Planet. Space*, 70, 198, <https://doi.org/10.1186/s40623-018-0976-4>, 2018.
- Collins, K.: Grape V1 Data: Frequency Estimation and Amplitudes of North American Time Standard Stations, Zenodo [data set], <https://doi.org/10.5281/zenodo.6590283>, 2022.
- Collins, K., Kazdan, D., and Frissell, N. A.: Ham Radio Forms a Planet-Sized Space Weather Sensor Network, *Eos*, 102, 24–29, <https://doi.org/10.1029/2021eo154389>, 2021.
- Collins, K., Montare, A., Frissell, N., and Kazdan, D.: Citizen Scientists Conduct Distributed Doppler Measurement for Ionospheric Remote Sensing, *IEEE Geosci. Remote S. Lett.*, 19, 1–5, <https://doi.org/10.1109/lgrs.2021.3063361>, 2022.
- Crowley, G. and Rodrigues, F. S.: Characteristics of traveling ionospheric disturbances observed by the TIDDBIT sounder, *Radio Sci.*, 47, RS0L22, <https://doi.org/10.1029/2011RS004959>, 2012.
- Davies, K.: Ionospheric Radio, IET, <https://doi.org/10.1049/pbew031e>, 1990.
- Davies, K., Watts, J. M., and Zacharisen, D. H.: A study of F 2-layer effects as observed with a Doppler technique, *J. Geophys. Res.*, 67, 601–609, <https://doi.org/10.1029/JZ067i002p00601>, 1962.
- Dellinger, J. H.: Sudden Disturbances of the Ionosphere, *P. IRE*, 25, 1253–1290, <https://doi.org/10.1109/JRPROC.1937.228657>, 1937.
- Frissell, N. A., Baker, J. B. H., Ruohoniemi, J. M., Gerrard, A. J., Miller, E. S., Marini, J. P., West, M. L., and Bristow, W. A.: Climatology of medium-scale traveling ionospheric disturbances observed by the midlatitude Blackstone SuperDARN radar, *J. Geophys. Res.-Space Phys.*, 119, 7679–7697, <https://doi.org/10.1002/2014JA019870>, 2014.
- Frissell, N. A., Baker, J. B. H., Ruohoniemi, J. M., Greenwald, R. A., Gerrard, A. J., Miller, E. S., and West, M. L.: Sources and Characteristics of Medium Scale Traveling Ionospheric Disturbances Observed by High Frequency Radars in the North American Sector, *J. Geophys. Res.-Space Phys.*, 121, 3722–3739, <https://doi.org/10.1002/2015JA022168>, 2016.
- Frissell, N. A., Collins, K., Montare, A., and Benedict, R.: Plotting code for Grape V1 Doppler stations, Zenodo [code], <https://doi.org/10.5281/zenodo.6654901>, 2022a.
- Frissell, N. A., Kaeppeler, S. R., Sanchez, D. F., Perry, G. W., Engelke, W. D., Erickson, P. J., Coster, A. J., Ruohoniemi, J. M., Baker, J. B., and West, M. L.: First Observations of Large Scale Traveling Ionospheric Disturbances Using Automated Amateur Radio Receiving Networks, *Geophys. Res. Lett.*, 49, e2022GL097879, <https://doi.org/10.1029/2022GL097879>, 2022b.
- Galvan, D. A., Komjathy, A., Hickey, M. P., and Mannucci, A. J.: The 2009 Samoa and 2010 Chile tsunamis as observed in the ionosphere using GPS total electron content, *J. Geophys. Res.-Space Phys.*, 116, A06318, <https://doi.org/10.1029/2010JA016204>, 2011.
- Gao, J. S., Huth, A. G., Lescroart, M. D., and Gallant, J. L.: Pycortex: an interactive surface visualizer for fMRI, *Front. Neuroinform.*, 9, 23, <https://doi.org/10.3389/fninf.2015.00023>, 2015.
- Georges, T. M.: HF Doppler studies of traveling ionospheric disturbances, *J. Atmos. Terr. Phys.*, 30, 735–746, [https://doi.org/10.1016/S0021-9169\(68\)80029-7](https://doi.org/10.1016/S0021-9169(68)80029-7), 1968.
- Gibbons, J., Collins, K., Kazdan, D., and Frissell, N.: Grape Version 1, Mendeley Data, V1 [data set], <https://doi.org/10.17632/nbbhy2yxmz.1>, 2021.
- Gibbons, J., Collins, K., Kazdan, D., and Frissell, N.: Grape Version 1: First prototype of the low-cost personal space weather station receiver, *HardwareX*, 11, e00289, <https://doi.org/10.1016/j.ohx.2022.e00289>, 2022.
- Gjerloev, J. W., Greenwald, R. A., Waters, C. L., Takahashi, K., Sibeck, D., Oksavik, K., Barnes, R., Baker, J., and Ruohoniemi, J. M.: Observations of Pi2 pulsations by the Wallops HF radar in association with substorm expansion, *Geophys. Res. Lett.*, 34, L20103, <https://doi.org/10.1029/2007GL030492>, 2007.
- Grocott, A., Hosokawa, K., Ishida, T., Lester, M., Milan, S. E., Freeman, M. P., Sato, N., and Yukimatu, A. S.: Characteristics of medium-scale traveling ionospheric disturbances observed near the Antarctic Peninsula by HF radar, *J. Geophys. Res.-Space Phys.*, 118, 5403–5966, <https://doi.org/10.1002/jgra.50515>, 2013.
- Hines, C. O.: Internal Atmospheric Gravity Waves at Ionospheric Heights, *Can. J. Phys.*, 38, 1441–1481, <https://doi.org/10.1139/p60-150>, 1960.
- Hori, T., Nishitani, N., Shepherd, S. G., Ruohoniemi, J. M., Connors, M., Teramoto, M., Nakano, S., Seki, K., Takahashi,

- N., Kasahara, S., Yokota, S., Mitani, T., Takashima, T., Higashio, N., Matsuoka, A., Asamura, K., Kazama, Y., Wang, S. Y., Tam, S. W., Chang, T. F., Wang, B. J., Miyoshi, Y., and Shinohara, I.: Substorm-Associated Ionospheric Flow Fluctuations During the 27 March 2017 Magnetic Storm: SuperDARN-Arased Conjunction, *Geophys. Res. Lett.*, 45, 9441–9449, <https://doi.org/10.1029/2018GL079777>, 2018.
- Huba, J. D., Drob, D. P., Wu, T.-W., and Makela, J. J.: Modeling the ionospheric impact of tsunami-driven gravity waves with SAMI3: Conjugate effects, *Geophys. Res. Lett.*, 42, 5719–5726, <https://doi.org/10.1002/2015GL064871>, 2015.
- Hunsucker, R. D.: Atmospheric gravity waves generated in the high-latitude ionosphere: A review, *Rev. Geophys.*, 20, 293–315, <https://doi.org/10.1029/RG020i002p00293>, 1982.
- Hunsucker, R. D.: Vertical Sounders – the Ionosonde, Springer Berlin Heidelberg, Berlin, Heidelberg, 67–93, https://doi.org/10.1007/978-3-642-76257-4_3, 1991.
- Jacobs, J. A. and Watanabe, T.: Doppler Frequency Changes in Radio Waves Propagating Through a Moving Ionosphere, *Radio Sci.*, 1, 257–264, <https://doi.org/10.1002/rds196613257>, 1966.
- Kelley, M. C.: On the origin of mesoscale TIDs at midlatitudes, *Ann. Geophys.*, 29, 361–366, <https://doi.org/10.5194/angeo-29-361-2011>, 2011.
- Lombardi, M.: Measuring the Frequency Accuracy and Stability of WWV and WWVH, QST, March issue, 33–37, 2023.
- Lombardi, M. A.: Allan Deviation Analysis of WWV Doppler Shift Measurements recorded with the HamSCI Grape 1 Receiver, HamSCI, Huntsville, AL, <https://hamsci.org/publications/allan-deviation-analysis-wwv-doppler-shift-measurements-recorded-hamsci-grape-1> (last access: 17 March 2023), 2022.
- Lynn, K. J.: A technique for calculating ionospheric Doppler shifts from standard ionograms suitable for scientific, HF communication, and OTH radar applications, *Radio Sci.*, 44, RS6002, <https://doi.org/10.1029/2009RS004210>, 2009.
- MacDonald, E., Brandt, L., Hamano, H.-H., Aurorasaurus Team, and NASA HPD Citizen Science Strategic Working Group: Heliophysics Citizen Science: Past, Present, and Future, in: The Third Triennial Earth-Sun Summit (TESS), 8–11 August 2022, Bellevue/Seattle, WA, 54, 2022n7i306p01, 2022.
- Nicolls, M. J. and Heinselman, C. J.: Three-dimensional measurements of traveling ionospheric disturbances with the Poker Flat Incoherent Scatter Radar, *Geophys. Res. Lett.*, 34, L21104, <https://doi.org/10.1029/2007GL031506>, 2007.
- Nishioka, M., Tsugawa, T., Kubota, M., and Ishii, M.: Concentric waves and short-period oscillations observed in the ionosphere after the 2013 Moore EF5 tornado, *Geophys. Res. Lett.*, 40, 5581–5586, <https://doi.org/10.1002/2013GL057963>, 2013.
- Nishitani, N., Ruohoniemi, J. M., Lester, M., Baker, J. B. H., Koustov, A. V., Shepherd, S. G., Chisham, G., Hori, T., Thomas, E. G., Makarevich, R. A., Marchaudon, A., Ponomarenko, P., Wild, J. A., Milan, S. E., Bristow, W. A., Devlin, J., Miller, E., Greenwald, R. A., Ogawa, T., and Kikuchi, T.: Review of the accomplishments of mid-latitude Super Dual Auroral Radar Network (SuperDARN) HF radars, *Prog. Earth Planet. Sci.*, 6, 27, <https://doi.org/10.1186/s40645-019-0270-5>, 2019.
- Pandya, R. and Dibner, K. A.: Learning Through Citizen Science, National Academies Press, <https://doi.org/10.17226/25183>, 2018.
- Plotly Technologies: Collaborative data science, <https://plot.ly> (last access: 17 March 2023), 2015.
- Price-Whelan, A.: Yearly sun graphs in Python with Astropy, <https://github.com/adrn-blog/post--yearly-sun-graph> (last access: 17 March 2023), 2022.
- Prölss, G. W.: Ionospheric Storms at Mid-Latitude: A Short Review, in: Midlatitude Ionospheric Dynamics and Disturbances, American Geophysical Union (AGU), 9–24, <https://doi.org/10.1029/181GM03>, 2008.
- Romanek, V., Frissell, N. A., Liles, W., Gibbons, J., and Collins, K. V.: HF Doppler Observations of Traveling Ionospheric Disturbances in a WWV Signal Received with a Network of Low Cost HamSCI Personal Space Weather Stations, in: HamSCI Workshop 2022, Huntsville, AL, <https://hamsci.org/publications/hf-doppler-observations-traveling-ionospheric-disturbances-wwv-signal-received-3> (last access: 17 March 2023), 2022.
- Samsel, F., Klaassen, S., and Rogers, D. H.: ColorMoves: Real-time Interactive Colormap Construction for Scientific Visualization, *IEEE Comput. Graph.*, 38, 20–29, <https://doi.org/10.1109/MCG.2018.011461525>, 2018.
- Scotto, C., Pezzopane, M., and Zolesi, B.: Estimating the vertical electron density profile from an ionogram: On the passage from true to virtual heights via the target function method, *Radio Sci.*, 47, RS1007, <https://doi.org/10.1029/2011RS004833>, 2012.
- Thomas, E. G., Baker, J. B. H., Ruohoniemi, J. M., Coster, A. J., and Zhang, S.-R.: The geomagnetic storm time response of GPS total electron content in the North American sector, *J. Geophys. Res.-Space Phys.*, 121, 1744–1759, <https://doi.org/10.1002/2015JA022182>, 2016.
- Trop, C.: Traveling Ionospheric Disturbances Tracked Through Doppler-Shifted AM Radio Transmissions, Dartmouth College Undergraduate Honors Thesis, <https://physics.dartmouth.edu/events/event?event=63569> (last access: 17 March 2023), 2021.
- Trop, C., LaBelle, J., Erickson, P. J., Zhang, S., McGaw, D., and Kovacs, T.: Traveling ionospheric disturbances tracked through Doppler-shifted AM radio transmissions, in: HamSCI Workshop 2021, HamSCI, Scranton, PA (Virtual), <https://hamsci.org/publications/traveling-ionospheric-disturbances-tracked-through-doppler-shifted-am-radio> (last access: 17 March 2023), 2021.
- Vierinen, J., Coster, A. J., Rideout, W. C., Erickson, P. J., and Norberg, J.: Statistical framework for estimating GNSS bias, *Atmos. Meas. Tech.*, 9, 1303–1312, <https://doi.org/10.5194/amt-9-1303-2016>, 2016.
- Wiggins, A. and Crowston, K.: From Conservation to Crowdsourcing: A Typology of Citizen Science, in: 2011 44th Hawaii International Conference on System Sciences, IEEE, <https://doi.org/10.1109/hicss.2011.207>, 2011.
- Yeang, C.-P.: Probing the Sky with Radio Waves, University of Chicago Press, Chicago, IL, ISBN 9780226274393, 2013.
- Zhang, S.-R., Erickson, P. J., Gasque, L. C., Aa, E., Rideout, W., Vierinen, J., Goncharenko, L. P., and Coster, A. J.: Electrified Postsunrise Ionospheric Perturbations at Millstone Hill, *Geophys. Res. Lett.*, 48, e2021GL095151, <https://doi.org/10.1029/2021GL095151>, 2021.