





# POS Catalogue



Point of Sale



-  CASH SYSTEMS
-  CASH DRAWERS
-  PRINTERS
-  SCANNERS



## Welcome to Ingram Micro's Catalogue of electronic Point-of-Sale Products

Ingram Micro is the global leader in technology and supply chain services, with the most extensive array of resources and insights to allow businesses to realise the promise of technology. Ingram Micro Data Capture/Point-of-Sale (IM DC/POS) is Europe's fastest-growing specialist distributor, with dedicated sales and support teams in over 20 EMEA locations. This catalogue showcases our portfolio of POS products for the retail, hospitality and leisure industries. In these pages you will find market-leading solutions from the sector's foremost vendors, including HP, NCR, Elo, Epson, Motorola, Datalogic and many others. Whether you are an experienced reseller in this sector, or new to the technologies, IM DC/POS has knowledgeable teams who can help to ensure that the right solutions are specified to meet your customers' requirements.

Our European stock is held centrally in Germany and ships to most countries in one or two working days. As part of the world's largest technology distributor, our customers rely on us to carry inventory of the most popular product configurations. At the back of this catalogue you will find details of our EMEA-wide offices where the DC/POS teams are ready to handle your enquiries.

## POS products available from Ingram Micro

### POS SYSTEMS

- All-in-one POS systems
- Modular POS systems

### RECEIPT AND BARCODE LABEL PRINTERS

- Thermal receipt printers for retail and hospitality
- Mobile receipt printers
- Thermal barcode label printers
- RFID smart label printer/encoders
- Receipt and label printing media

### POS PERIPHERALS

- Cash drawers
- Payment/loyalty card readers/terminals
- Flexible locking stands for POS peripherals

### BARCODE READERS

- Hand-held barcode scanners
- Hands-free presentation scanners
- In-counter scanners and scales/scanner units

### DISPLAYS AND TOUCHSCREENS

- Customer displays
- Interactive touchscreens
- Kiosk display/scanner units

### MOBILE COMPUTING DEVICES

- Tablets for mobile POS
- Rugged hand-held computers

### MISCELLANEOUS

- ID card printers/smart card encoders
- Wireless LAN infrastructure solutions
- Extended warranties and service packages





## CASH SYSTEMS

06	Elo Touch Solutions
08	Elo Touch Product Overview
10	Elo Touch Product Overview
12	Elo Touch omnichannel Solutions
14	HP Point of Sale Solutions
16	HP Product Overview
18	HP Peripherals, Elitepad1000
20	Sebetto chooses HP Retail System
22	NCR RealPOS Solutions
24	NCR Product Overview
26	NCR Point of Sale Technology Solution

## CASH DRAWER

28	Micros Product Overview
----	-------------------------

## PRINTERS

30	Cognitive TPG – The Innovation to inspire
32	Cognitive TPG Product Overview
34	Cognitive TPG A799 Collection

## PRINTERS

36	Epson – Solutions for Retail
38	Epson Product Overview
40	Epson Product Overview
42	Epson TM-Intelligent
44	Seiko Instruments
46	Seiko Instruments Product Overview
48	Zebra Technologies
50	Zebra Technologies Product Overview
52	Bluetooth keeps Blue Devils mobile

## SCANNERS

54	Datalogic – The Art of Automatic Identification
56	Datalogic Product Overview
58	Datalogic Product Overview
60	Datalogic Memor™ Mobile Computer
62	Motorola Solutions – For the Moments that matter
64	Motorola Product Overview
66	Motorola Product Overview
68	Shopping Experience with “Subito”



## Elo Touch Solutions – original Inventor of the Touchscreen

Elo Touch Solutions is a leading global supplier of touch-enabled technology, products and industry solutions. The Elo portfolio encompasses the broadest selection of OEM touch screen components, touch monitors, mobile tablets and all-in-one touch computers for the demanding requirements of diverse markets, including gaming machines, hospitality systems, industrial au-

tomation, interactive kiosks, healthcare, office equipment, point of sale terminals, retail displays, and transportation applications. Since Elo founders pioneered the touch screen over 40 years ago, the Elo touch experience has consistently stood for quality, reliability and innovation with over 20 million installations worldwide. We know touch – it's our only business.

- 40 years' experience in the touchscreen industry
- Broadest offering of touch technologies for virtually any application
- Consistently reliable, accurate, and durable products
- Stable, drift-free operation; scratch-resistant
- Recognized durability and performance
- Wide variety of configurations and form factors for design flexibility

- First-class service and support with worldwide sales people, sales partners, technical support and warehouses
- Custom solutions for special requirements
- Long, worldwide warranties
- Worldwide agency approvals

### TOUCH TECHNOLOGIES

Elo has the widest portfolio of touch technologies, each optimized for different operating characteristics and environments to suit various application requirements. The various product models typically come with a choice of touch technology to offer the best solution for the environment the product is used in. The most commonly used are:

- iTouch® Plus: dual-touch functionality with flat, seamless surface area (zero-bezel)
- SecureTouch®: single-touch with anti-vandal glass

### RESISTIVE

Durable touchscreens that work with most inputs: finger, fingernail, gloved hand or objects such as a credit card. Elo's five-wire resistive technology is called AccuTouch®.

### PROJECTED CAPACITIVE

Fast and sensitive dual-touch technology in a true-flat glass design without bezel.

### OPTICAL

Used on large format displays for multi-touch performance

### SURFACE ACOUSTIC WAVE

Pure glass touchscreens with excellent image quality and fast touch response. Works with finger, gloved hand and soft stylus. Elo surface acoustic wave technologies include:

- IntelliTouch®: single-touch functionality with bezel design
- IntelliTouch® Plus: dual-touch functionality with bezel design
- iTouch®: single-touch functionality with flat, seamless surface area (zero-bezel)

## Professional Touchscreens built to last

As the original inventors of touch screen technology, Elo Touch Solutions has over 40 years of retail market experience, providing customers with a proven, high quality, long-life, product designed for years of reliable use, around the clock, to facilitate critical

point of sale transactions, enhance brand experiences and drive interactive omnichannel portals. The touchscreen product portfolio, with touch built in rather than bolted on, includes a variety of models and form factors in sizes from 7-inch to 70-inch.

### DESKTOP TOUCHMONITORS

- Wide range of sizes from 7" to 24"
- Entry-level, multi-function and healthcare models
- Standard and wide-screen formats
- Models with seamless zero-bezel design (uninterrupted surface area)
- Base can be reversed or removed for wall-mount
- Multifunction units with optional peripherals

### OPEN-FRAME AND WALL MOUNT TOUCHMONITORS

- Wide range of sizes from 12" to 32"
- For mounting into kiosks and cabinets
- Multiple mounting options include rear-mount, VESA mount, panel-mount, front-mount and rack-mount
- Standard and wide-screen formats
- Compact and easy to integrate

### ALL-IN-ONE TOUCHCOMPUTERS

- 15", 17", 19" and 22"; standard and wide-screen format
- Space-saving models with computing functionality integrated in the footprint of a standard LCD monitor and models designed for POS and healthcare applications
- Models with seamless zero-bezel design (uninterrupted surface area)
- Field-installable peripherals such as magnetic stripe reader, customer display, finger print reader and barcode scanner

### INTERACTIVE DIGITAL SIGNAGE DISPLAYS

- 32", 42", 55" and 70"
- Optional field-installable computer modules in various configurations
- Wall-mount, optional stand for desktop use
- Landscape or portrait orientation
- Pure-glass touchscreens for superior image quality

### MOBILE TABLET

- 10"
- Rugged and Connected
- Windows / Intel architecture
- Integrated MSR, barcode scanner, smart card reader, wireless printing and removable battery
- Docking station



## elo TOUCH SOLUTIONS Entry-level Desktop Touchmonitors 1517L & 1717L

### PRODUCT DESCRIPTION

The entry-level 1517L and 1717L touchmonitors are built to withstand the rigours of continuous public use with a rugged, “built for touch” industrial design. They deliver style and performance with a wide variety of features for a higher level of functionality. It is well suited for public venues where point-of-sale (POS), point-of-information, point-of-service, countertop interactive digital signage, loyalty systems and kiosk information systems are found.



### SPECIFICATIONS

- **Form factor:** 15”/17” desktop, stand removable for wall- or pole-mount
- **Touch Technology:** AccuTouch resistive, IntelliTouch and iTouch surface wave; standard bezel and zero-bezel versions
- **Aspect ratio:** 4:3/5:4
- **Resolution:** 1024 x 768/1280 x 1024
- **Brightness (LCD panel):** 250 nits
- **Contrast ratio:** 700:1/800:1
- **Viewing angle:** 160°:140°/170°:160°
- **Video format:** VGA
- **Options:** Magnetic Stripe Reader, customer display
- **Warranty:** 3 years standard  
Extended warranty available

## elo TOUCH SOLUTIONS Wide-screen Desktop Touchmonitors

### PRODUCT DESCRIPTION

Wide-aspect displays are easier to use and incorporate into the workplace than traditional desktop touchmonitors. The low wide-screen format displays provide more application space without blocking eye contact to customers at the point-of-service. The pure glass displays are popular in public venue environments due to a high-definition cinematic-like experience. The Elo wide-screen range includes models in 15”, 19” and 22” (1509L, 1519L, 1919L, 2201L).



### SPECIFICATIONS

- **Form factor:** desktop, stand removable for wall- or pole-mount
- **Touch Technology:** Choice of touch technology, single-touch and multi-touch
- **Aspect ratio:** 16:9
- **Resolution:** 1366 x 768/1920 x 1080 (2201L)
- **Brightness (LCD panel):** 250 nits
- **Contrast ratio:** 1000:1
- **Viewing angle:** 170°:160°
- **Video format:** VGA, DVI-D
- **Options:** Magnetic Stripe Reader, customer display, webcam
- **Warranty:** 3 years standard  
Extended warranty available

## elo TOUCH SOLUTIONS Multifunction Desktop Touchmonitors 1523L & 1723L

### PRODUCT DESCRIPTION

The 1523L and 1723L have been “designed for touch” from the ground up, with such features as a spill-resistant sealing, adjustable height stand with tilting functionality, VESA mounting option, connectivity incorporated within the monitor (reducing the number of power bricks), and communication cables and side controls with lockout capability. The “built for touch” reliability is backed by a standard 3-year warranty (extended warranty options available).



### SPECIFICATIONS

- **Form factor:** 15”/17” desktop, stand removable for wall- or pole-mount, dual-height stand
- **Touch Technology:** iTouch Plus zero-bezel multi-touch surface acoustic wave
- **Aspect ratio:** 4:3/5:4
- **Resolution:** 1024 x 768/1280 x 1024
- **Brightness (LCD panel):** 250 nits
- **Contrast ratio:** 700:1/800:1
- **Viewing angle:** 160°:140°/170°:160°
- **Video format:** VGA, DVI-D
- **Options:** Magnetic Stripe Reader, customer display, webcam, RFID reader
- **Warranty:** 3 years standard  
Extended warranty available

## elo TOUCH SOLUTIONS Elo Tablet

### PRODUCT DESCRIPTION

The Elo Tablet is designed to help retailers enhance their customer experience and drive sales efficiency through a point-of-service platform that is portable, reliable and secure. This tablet features the centralised management and security capabilities of the Windows environment, in a commercial form factor that reduces theft risk and withstands being dropped. A complementary docking station provides connectivity to peripheral interfaces while also charging the main battery and an auxiliary battery pack simultaneously.



### SPECIFICATIONS

- **Operating system:** Windows Embedded 7 Standard, or no OS
- **Functionality:** Integrated MSR, barcode reader, and smart card reader
- **Touchscreen:** 10.1” projected capacitive multi-touch technology
- **Processor:** Intel Atom N2600 Dual Core 1.6GHz processor
- **Memory:** 2 GB DDR3 1066MHz RAM Memory
- **Wireless:** Wi-Fi, Bluetooth, NFC and RFID Ethernet via docking station
- **Docking station:** Docking station with battery charging location, Ethernet, 3 x USB, and VGA
- **Connectivity:** USB connectivity to external peripherals
- **Warranty:** 18 months standard warranty  
Extended warranty available

## elo TOUCH SOLUTIONS 15E1 Touchcomputer

### PRODUCT DESCRIPTION

The 15E1 touchcomputer is an elegant, retail-hardened touch solution with a small footprint, developed to fit into hospitality and retail environments where its thin, sleek look complements the décor and ambiance. The compact, ruggedised touchcomputer is a space-saving system that features a 15" widescreen zero-bezel touchscreen at the same price and performance as a separate monitor and PC setup. Designed to fit on top of a cash drawer, it can also be wall- or pole-mounted depending on the installation needs.

### SPECIFICATIONS

- **Form factor:** widescreen desktop, brackets included for wall- or pole-mount
- **Touch Technology:** iTouch zero-bezel pure glass touch technology
- **Aspect ratio:** 16:9
- **Resolution:** 1366 x 768
- **Processor:** Intel 1.66GHz Atom N270
- **Memory (RAM):** 2 GB DDR2 SODIMM
- **Operating System:** Sold without operating system
- **Ports:** 4 USB ports, 2 RS-232 ports, 2nd VGA out
- **Options:** Magnetic Stripe Reader, customer display
- **Warranty:** 1 year



## elo TOUCH SOLUTIONS B-Series Touchcomputers

### PRODUCT DESCRIPTION

The Elo B-Series provides two highly configurable, ruggedised touchcomputers, the fanless B2 models and the high performance B3 models. Both ranges are available in two screen sizes – 15" and 17", with a choice of touch technology (single-touch or multi-touch) and operating system. A compact design, more flexibility with a choice of configuration and connectivity options, more serviceability with easy access to key components and more processing power make the B-Series both versatile and powerful.

### SPECIFICATIONS

- **Form factor:** 15" and 17" desktop, stand removable for wall- or pole-mount
- **Touch Technology:** AccuTouch and iTouch Plus touch technologies
- **Aspect ratio:** 4:3/5:4
- **Processor (2 choices):** B2 models: Intel 1.86GHz Atom Dual-Core N2800/ B3 models: Intel Core i3 3.3GHz (Ivy Bridge)
- **Memory (RAM):** 2 GB 1333MHz DDR3 SO-DIMM
- **Operating System:** Windows 7, no OS
- **Peripherals:** Field-installable peripherals including magnetic stripe reader, customer display
- **Upgrades:** Memory and storage upgrades and port expansions available
- **Serviceability:** Easy access to main components for service or upgrade
- **Warranty:** Extended warranty available



## elo TOUCH SOLUTIONS 15D1 Touchcomputer

### PRODUCT DESCRIPTION

The D-Series all-in-one touchcomputers in 15" deliver a versatile, functional and elegant touch system, designed for POS applications. It couples the performance and value customers expect from an Elo product with processing power, serviceability and the connectivity options required in POS environments. A broad range of field-installable accessories and the many input/output ports for 3rd party peripherals allow the D-Series to be customised to meet specific requirements.

### SPECIFICATIONS

- **Form factor:** 15" desktop
- **Touch Technology:** AccuTouch and IntelliTouch touch technologies
- **Aspect ratio:** 4:3
- **Processor:** Intel Celeron dual-core 2.5GHz G540
- **Memory (RAM):** 2 GB Low-Profile 1333 MHz DDR3 DIMM
- **Operating System:** Windows 7, no OS
- **Connectivity:** Large range of connectivity ports for peripherals (cash drawer, printer etc)
- **Peripherals:** Field-installable peripherals including magnetic stripe reader, customer display
- **Serviceability:** Front and back covers easily removable for upgrade and servicing
- **Cable Management:** All cables hidden inside the unit
- **Warranty:** Extended warranty available



## elo TOUCH SOLUTIONS C-Series Touchcomputers

### PRODUCT DESCRIPTION

Elo's C-Series All-in-One touchcomputer platform leverages the same quality, performance and configurations as the B-Series, but with larger, high definition widescreen displays. Available in 19" or 22", with a choice of operating system and touch technology (single-touch or multi-touch), the C-Series is ideal for any point-of-information, product demonstration or customer information system. A full range of standard connectivity ports adds functionality allowing for easy integration to any legacy or new install environments.

### SPECIFICATIONS

- **Form factor:** 19" and 22" desktop, stand removable for wall- or pole-mount, IPX1 enclosure
- **Touch Technology:** AccuTouch and iTouch Plus touch technologies
- **Aspect ratio:** 16:9
- **Processor (2 choices):** C2 models: Intel 1.86GHz Atom Dual-Core N2800/C3 models: Intel Core i3 3.3GHz (Ivy Bridge)
- **Memory (RAM):** 2 GB 1333MHz DDR3 SO-DIMM
- **Operating System:** Windows 7, no OS
- **Color:** Black, C2 models with iTouch Plus available in both black and white
- **Serviceability:** Easy upgrade and replacement of memory, hard disk drive and system fans
- **Peripherals:** Optional magnetic stripe reader customer display, USB wireless kit
- **Warranty:** Extended warranty available







### Elo omnichannel Solutions integrate Store, online and mobile Experiences

The concept of omnichannel is simply defined as a seamless approach to the consumer experience through all available shopping channels (for example in-store, mobile internet devices, web, computers, TV, catalogue...). Benefits for the retailer include an enhanced, tailored shopping experience which creates loyal customers, a more consistent brand experience and improved efficiency through for example cross-selling and inventory management.

Alternative shopping trends are driving expansion into cross channel shopping. As the retailers expand product offering, consumers are looking for a richer buying assistance experience over a greater selection of products. They are also comfortable with, and show a preference for self guided shopping experiences; at the same time, increasing employment costs drive retailers to replace floor associates with self service solutions. For self-service, as well as shopper assistance and mobile Point-of-Sale, touch has become the expected interface. Smart phones have provided an

unprecedented adoption of “touch devices” by all demographics. For the in-store experience, Elo has a range of products that help retailers building their omnichannel solutions. On the large interactive digital signage displays brands can customise their advertising according to the user’s behavior. The smaller touchmonitors give the shopper a more intimate feeling when looking up specific product information, signing up for a loyalty programme or finding the right accessory for their selected item. With the Point-of-Sale systems retailers can identify individuals and offer tailored discounts (loyalty-points, birthdays, anniversaries and so on). Elo’s retail tablet directly answers to the requirements of a mobile hardened store system for mobile POS, shopper assist, line busting, and inventory management. Having the store associates being mobile on the shop floor instead of behind the check-out counter allows them to interact with the customer at the point of decision. These are just a few examples of how Elo’s ability to engage with customers, present personalised offers and closely track actions are all valuable aspects of the omnichannel revolution.



## Elo Touch Solutions Tablet: Retail ready!

Millions of real-life retail installations all over the world have helped Elo develop unique insight for this next generation of our touch computing innovation. The new Tablet directly answers the requirements of a mobile hardened store system for mobile POS, shopper assist, line busting, and inventory management.



#### Elo Tablet – 10.1”

- Rugged & Connected
- Windows / Intel Architecture
- Integrated MSR, Barcode Reader, Smart Card Reader
- Docking Station







## HP Point of Sale (POS) Solutions

HP is one of the best known and most respected names in the world of point of sale solutions. Their systems are designed to simplify the end user's business and maximise profits by improving service and efficiency.

HP POS systems are available in sleek all-in-one form factors or in versatile modular packages, so resellers can put together the perfect solution for every end user in the retail, hospitality and leisure markets. These are complemented by a compre-

hensive range of peripheral devices, including receipt printers, cash drawers, touch monitors, barcode scanners and customer displays.

Ingram Micro stocks the most popular configurations of HP POS solutions and supplies the products throughout Europe, cutting resellers' lead times and providing expert pre-sales advice. Call your local IM DC/POS sales office for pricing and availability.



## HP Care Pack Services

HP Care Pack Services offer upgraded service levels to enhance your warranty cover for your total peace of mind and help you to stay up and running. For HP POS systems and retail solutions, this service covers the base unit as well as attached

HP-branded peripherals such as cash drawers, printers, pole displays for monitors, and bar code readers or hand-held scanners that have been sold as part of the POS or bundled product solution.

### HP 5 YEAR NEXT BUSINESS DAY ONSITE DESKTOP ONLY HARDWARE SUPPORT (U7899E)

Receive 5 years of next business day onsite repair from an HP-qualified technician for your computing device, if the issue cannot be solved remotely. This is an easy-to-purchase, easy-to-use onsite hardware repair service for HP POS hardware, excluding HP external monitors. Your customers can enjoy a longer service plan, continued support from HP, and have it onsite!

#### SPECIFICATIONS

- Care Pack type: electronic
- Coverage period: 60 months
- UNSPSC code: 81111812
- Code name: 218

NB: HP Care Pack provides coverage from the hardware purchase date.

### HP 5 YEAR NEXT BUSINESS DAY ONSITE POS SOLUTION INCLUDING MONITOR SERVICE (UL590E)

Receive 5 years of next business day onsite repair from an HP-qualified technician for your computing device, if the issue cannot be solved remotely. This is an easy-to-purchase, easy-to-use onsite hardware repair service for HP POS hardware. Your customers can enjoy a longer service plan, continued support from HP, and have it onsite!

#### SPECIFICATIONS

- Care Pack type: electronic
- Coverage period: 60 months
- UNSPSC code: 81111812
- Code name: 1D

NB: HP Care Pack provides coverage from the hardware purchase date.





## hp HP RP7 Retail System, Model 7100

### PRODUCT DESCRIPTION

HP's RP7 all-in-one retail solution is sleek, stylish, and able to be integrated effortlessly into existing environments. The RP7 system can be customised for everything that your customers need and nothing they don't. Redefining reliability in hospitality, the HP RP7 model 7100 delivers an intuitive, comfortable user experience in a fanless, sealed chassis that's deployable in the most demanding settings.



### SPECIFICATIONS

- **Processor:** Intel® Celeron® 807UE (1.0 GHz, 1 MB cache, 1 core fanless)
- **Memory:** 4 GB 1600 MHz DDR3 SDRAM, expandable to 8GB
- **Operating System:** Windows® 7 Professional 32  
Windows® 7 Professional 64  
Windows® Embedded POSREADY 7  
Windows® Embedded POSREADY 2009  
FreeDOS
- **Display:** Choice of one associate-facing touchscreen display includes 15" Resistive (1024 x 768 resolution), 15" Projected Capacitive (1024 x 768 resolution), or 17" Projected Capacitive (1280 x 1024 resolution)  
Optional customer facing display includes HP RP7 VFD Display or the HP RP7 10.4-inch
- **Form factor:** All-in-One
- **Warranty:** Limited three years parts, labor and on-site service  
Certain restrictions and exclusions apply

## hp HP RP3, Model 3100

### PRODUCT DESCRIPTION

The compact and affordable HP RP3 retail system provides retailers of all sizes with reliability and connectivity features that help maximise operating cost efficiency. The system can be used in space-constrained settings and nearly anywhere you need a point of sale system. It's an ideal solution for retailers of all sizes.



### SPECIFICATIONS

- **Processor:** Intel® Celeron® 807UE (1.0 GHz, 1 MB cache, 1 core)
- **Memory:** 4 GB 1600 MHz DDR SDRAM, expandable up to 8GB
- **Operating System:** Windows® 7 Professional  
Windows® Embedded POSReady 7  
Windows® Embedded POSReady 2009  
FreeDOS
- **Monitor Type:** Choice of one associate-facing touchscreen display includes 15" Resistive (1024 x 768 resolution), 15" Projected Capacitive (1024 x 768 resolution), or 17" Projected Capacitive (1280 x 1024 resolution)  
Optional customer facing display includes HP RP7 VFD Display or the HP RP7 10.4-inch
- **Form factor:** Ultra-small form factor
- **Warranty:** Limited three years parts, labor, and on-site service.  
Certain restrictions and exclusions apply.

## hp HP RP7 Retail System, Model 7800

### PRODUCT DESCRIPTION

HP's RP7 all-in-one retail solution is sleek, stylish, and able to be integrated effortlessly into existing environments. Get ready for the next-generation all-in-one retail solution from HP. Sleek, stylish, and able to be integrated effortlessly into existing environments, the HP RP7 retail system can be customised for everything you need and nothing you don't.



### SPECIFICATIONS

- **Processor:** Intel® Core™ i5-2400S (2.50 GHz, 4 cores)  
Intel® Core™ i3-2120 (3.30 GHz, 2 cores)  
Intel® Pentium® G850 (2.90 GHz, 2 cores)  
Intel® Celeron® G540 (2.50 GHz, 2 cores)
- **Memory:** 4 GB 1600 MHz DDR3 SDRAM, expandable up to 16GB
- **Operating System:** Windows® 7 Professional  
Windows® Embedded POSREADY 7  
Windows® Embedded POSREADY 2009  
FreeDOS
- **Display:** Choice of one associate-facing touchscreen display includes 15" Resistive (1024 x 768 resolution), 15" Projected Capacitive (1024 x 768 resolution), or 17" Projected Capacitive (1280 x 1024 resolution) Optional customer facing display includes HP RP7 VFD Display or the HP RP7 10.4-inch
- **Form factor:** All-in-One-Point-of-Sale
- **Warranty:** Limited three years parts, labor and on-site service,  
Certain restrictions and exclusions apply

## hp HP RP 5810

### PRODUCT DESCRIPTION

Advanced features enable retailers to standardise on one system to run mission critical operations. Expandable and highly configurable for easy implementation into existing ecosystems with a choice of operating systems, Intel® processors, storage, and memory.



### SPECIFICATIONS

- **Processor:** Intel® Pentium® Dualcore G850 (2,90 GHz, 3 MB Cache, 2 Cores )  
Intel® Pentium® Dualcore G850 (2,90 GHz, 3 MB Cache, 2 Cores )  
Intel® Pentium® Dualcore G850 (2,90 GHz, 3 MB Cache, 2 Cores )  
Intel® Pentium® Dualcore G850 (2,90 GHz, 3 MB Cache, 2 Cores )
- **Memory:** 8 GB 1600 MHz DDR3 SDRAM
- **Operating System:** Windows® 7 Professional  
Windows® Embedded POSReady 7  
Windows® Embedded POSReady 2009  
FreeDOS
- **Monitor Type:** Choice of one associate-facing touchscreen display includes 15" Resistive (1024 x 768 resolution), 15" Projected Capacitive (1024 x 768 resolution), or 17" Projected Capacitive (1280 x 1024 resolution)  
Optional customer facing display includes HP RP7 VFD Display or the HP RP7 10.4-inch
- **Form factor:** Point-of-Sale
- **Warranty:** Limited three years parts, labor, and on-site service,  
Certain restrictions and exclusions apply

## Peripherals

### PRINTERS

- **HP Serial USB Thermal Receipt Printer**  
One or two-color receipt printing with graphic capabilities, 8MB memory, ultra-fast 74 line/sec print performance
- **HP POS Hybrid Printer**  
Receipt, slip printing and check validation in a small footprint, one or two-color receipt printing with graphic capabilities



### SCANNERS

- **HP Linear Barcode Scanner**  
Linear imaging technology, captures 1D barcodes, reads from mobile devices, bi-directional scanning, fast scan speed
- **HP Imaging Barcode Scanner**  
Imaging technology, captures 1D and 2D Barcodes, reads from mobile devices, omni-directional scanning
- **HP Presentation Barcode Scanner**  
Imaging technology, captures 1D and 2D Barcodes, reads from mobile devices, omni-directional scanning, small form factor



### DISPLAYS & STANDS

#### Non Touch Retail Display:

- **HP L6010 10.4" Retail Monitor**  
10.4" diagonal non-touch monitor, white LED industrial panels, flush-glass design, optional stand
- **HP Dual position stand for L6010**  
Two height positions, ruggedized, maximizes counter space
- **HP L1506x 15" Monitor**  
15" diagonal non-touch monitor, 4:3 standard ensures compatibility with the majority of software applications



#### Touch Display:

- **HP L5006tm and L5009tm Touch Monitors**  
15" diagonal touch monitor, two touch technology models: SAW and APR
- **HP L6015tm and L6017tm Touch Monitors**  
15" and 17" diagonal monitors, projective capacitive touch technology, white LED industrial panels, flush-glass design
- **HP Adjustable stand for L6015tm, L6017tm**  
Height and tilt adjustments help to customize positioning, ruggedized, maximizes counter space
- **HP RP7 Retail Value Stand**  
Single hinge design with adjustable tilt that is ideal for tight spaces, small footprint
- **HP RP7 Adjustable Stand**  
Unique dual hinge base supports adjustable tilt and height, used for on-the-counter placement of the HP RP7 system



### CASH DRAWERS / TILL INSERTS

- **HP Flip Top Cash Drawer**  
Robust steel construction with stainless steel lid, lockable lid with handles allows secure transfer of cash
- **HP Heavy Duty Cash Drawer**  
Robust design with heavy gauge steel shell, localized till inserts, additional coin storage beneath the till
- **HP Standard Duty Cash Drawer**  
Robust steel construction, low profile solutions, compact footprint, dual media slots



\* More peripherals are available.

## ElitePad 1000

### PRODUCT DESCRIPTION

More than a tablet – a total business solution. The elegant and sleek HP ElitePad 1000 G2 has the performance and flexibility to transform the way you work. Redefine productivity and stay light with the confidence of the leading manageability, security, and support you expect from HP.

### SPECIFICATIONS

- **Processor:** Intel Atom Z3795 (1,6 GHz, bis 2,39 GHz with Intel Burst Technologie, 2MB cache, quad core)
- **Memory:** LPDDR3 SDRAM, 4 GB, 1067 MHz
- **Operating System:** Windows 8.1 Pro 64
- **Display** 10.1" diagonal WUXGA outdoor display (1900 x 1200)  
Multi-touch capacitive digitizer, auto rotate, direct bonded, Corning Gorilla Glass 3
- **Warranty:** 1-year standard parts, labour, and onsite limited warranty, depending on country; 1-year limited warranty on primary battery



## ElitePad Accessories

### PRODUCT DESCRIPTION | ELITEPAD RETAIL JACKET

Get the connectivity and power you need and get more done on the go. Be productive throughout the day with the HP ElitePad Expansion Jacket with Battery. The sleek design snaps onto the HP ElitePad without inhibiting its mobility.



Two USB ports to connect to everyday peripherals, and HDMI for an external display (sold separately). Quickly store and transfer files with the integrated micro SD reader.

- **Warranty:** One-year limited warranty

### PRODUCT DESCRIPTION | MX10 SOLUTION WITH RETAIL EXPANSION DOCK

HP Retail Expansion Dock adds serial, power USB, LAN and secondary monitor connectivity to the HP Mobile POS Solution. Charging the Elite Pad while docked, the Retail Expansion Jacket transforms Mobile POS into a fixed terminal on demand. Pair HP ElitePad in Retail Jacket with Retail Expansion Dock for complete MX10 solution.



### SPECIFICATIONS

- **Serial Ports** 4 Serial ports for legacy peripherals (DB9, poered, jumper selectable - 5V-12V)
- **USB Ports** 6 USB ports (1x 24V, 2x 12V, 4x 5V)
- **Video** 1 HDMI connector and 1 VGA connector
- **Network** 1 RJ-45 (Ethernet)
- **Security:** Three security options: lock the HP ElitePad Mobile POS Solution to the Retail Expansion Dock with a key, secure the HP Retail Expansion Dock with a cable lock, or secure the HP Retail Expansion Dock to a counter or cash draer with a bolt
- **Warranty:** One-year limited warranty



## Sebeto chooses HP Retail Systems to improve Service and Efficiency

### CHALLENGE

ITALIAN PIZZA GOES GLOBAL – Rossopomodoro was launched in Naples in the 1990s. From the outset, the idea behind the brand was to bring the quality and flavour of the very best Italian cuisine to a wider audience.

There must have been something in the recipe. Over the last 25 years, the Sebeto Group has opened more than 150 outlets, covering all the major cities in the world, under the brands 'Rossopomodoro', 'Anema e Cozze' and 'Ham Holy Burger'.

Building on modern and efficient technological foundations, Sebeto has been able to support the vertiginous growth that has led the group to open a new outlet at a rate of one per month for the last 10 years. In Italy alone, the company now serves over five million customers each year. "We need fast and faultless production and table service," says Marco De Simone, Sebeto's IT Manager, "because revenues at our outlets are concentrated in just a few hours of the day: lunch time and dinner time. Our target is to serve customers within 20 minutes of seating them. This is only possible if the skills of our staff – who are the core of our business – are backed up by an IT system that works."

### SOLUTION

QUALITY HARDWARE AND SUPPORT – In order to keep up with its own growth and with external competition, in late 2012 Sebeto decided to upgrade its in-restaurant IT infrastructure – mostly comprising the company's 'Kitchen Display System' and its till systems.

Working alongside Guttadauro (a system integrator), De Simone and his team analysed the solutions available on the market. They soon came to the conclusion that HP's products were the best available.

"We chose HP because the new R7 series machines perform well and are very competitively priced," says De Simone. "On top of that, the service that the multinational and its partner can offer made the difference."

### OBJECTIVE

Upgrade Point-of-Sale (POS) systems to enable faster customer service and consequently greater revenues, without sacrificing quality or security

### APPROACH

Completely replace the old systems with more advanced and economical technology offering robust data protection and business continuity functions

### IT MATTERS

- Reduced POS system purchase costs
- Stable management costs with better performance levels
- Online, near real-time consultation of all management data

### BUSINESS MATTERS

- Thirty per cent faster customer service
- Pace of new restaurant openings worldwide sustained by new system reliability and standardisation
- Improved security thanks to biometric access control



HP recommends Windows.

## Move from the counter to the customer, and back again.



Make it matter.

**Seamlessly transition between mobile and fixed with the HP MX10 Retail Solution.** Adapt to the sales flow and better serve your customers with the HP MX10, a 3-in-1 retail solution featuring the sleek, stylish HP ElitePad, the HP Retail Jacket, and the new HP Retail Expansion Dock. Full integration with your existing Windows environment lets you verify prices, search inventory, and check out customers anywhere in the store<sup>1</sup>. Because customer service matters, go to [hp.com/go/mobilepos](http://hp.com/go/mobilepos)



**HP ElitePad** allows for seamless integration into Windows IT environments<sup>2</sup>.



**1D/2D barcode scanner** to check prices, scan inventory, and scan items for sale.



**Easily snap in and out of the HP ElitePad Expansion Dock** to go from mobile POS to fixed, and back again.

<sup>1</sup>Internet access required.

<sup>2</sup>The integrated display resolution of this system is below the threshold for snapping apps, a new feature that allows two Windows apps to be viewed simultaneously side by side. This feature may be enabled by attaching an external display which supports a screen resolution of 1366 x 768 or higher.

Microsoft and Windows are registered trademarks of Microsoft Corporation in the United States and other countries.

© 2014 Hewlett-Packard Development Company, L.P. The information contained herein is subject to change without notice.





## NCR RealPOS Solutions



NCR has been in the retail market providing point of sale solutions for the last 130 years. NCR is leading the way in the new world of retail interactions, helping retailers interact, transact and connect with their customers in revolutionary new ways. NCR's powerful RealPOS solutions, minimise downtime and cut training time – all while enriching the customer experience. NCR RealPOS terminals embody an unrivalled history of innovation and a solid commitment to providing the optimum combination of performance and value.

### **NCR INTERACT AUTHORISED SOLUTION PROVIDER MEMBERSHIP – KEEPING YOU AT THE FOREFRONT**

If you are interested in reselling NCR RealPOS products to your customers or clients, the NCR Interact Authorised Solution Provider membership is the right place for you. Our Authorised Solution Provider partnership enables you to grow your NCR point of sale business while building your NCR Retail competencies.

As an Authorised Solution Provider you receive discounts, technical, marketing and sales support through Ingram Micro. Plus, Authorised level membership opens the door to PartnerCentral, our partner portal loaded with a variety of tools from marketing campaigns and collateral to sales training and technical support software.

Through our partner program you can resell a select set of point-of-sale systems, scanners and printers, all available through your distributor, Ingram Micro. Ingram Micro stocks the most popular configurations of NCR retail POS systems and supplies the products throughout Europe, cutting resellers' lead times and providing expert pre-sales advice. Call your local IM DC/POS sales office for pricing and availability.

### **RETURN TO BASE SERVICE: MAIL-IN SERVICE WITH 10 BUSINESS DAYS TURNAROUND FROM UNIT RECEIPT**

With the Return to Base service, POS peripherals and devices are sent to a central NCR repair facility, where a highly qualified technician performs the required maintenance and repairs. Your equipment undergoes rigorous inspection and testing to ensure that all components are in excellent condition.

### **ADVANCED EXCHANGE SERVICE: OVERNIGHT EXCHANGE REPLACEMENT MONDAY-FRIDAY (EXCLUDING HOLIDAYS)**

The Advanced Exchange service provides a faster return to service of equipment via our next business day option. Each replacement unit undergoes rigorous inspection and testing processes to ensure that all components are in excellent condition. During this inspection we "upgrade" the unit to the latest engineering changes and ensure every item arriving at your site is up to our current standards for NCR manufactured equipment.

NCR provide a range of in-warranty service upgrade options for select NCR point-of-sale (POS) products and peripherals. You will gain access to a fleet of retail industry experts, industry-leading service processes and methodologies, and highly qualified service and support technicians to keep your business up and running.



## NCR RealPOS Hardware Maintenance Offers from Ingram Micro

You are now able to purchase select NCR Hardware Maintenance (HWM) offers from Ingram Micro at the time of equipment purchase.

### **FOR MORE INFORMATION ABOUT NCR VISIT:**

NCR Retail: <http://www.ncr.com/industries/retail>

NCR Interact Partner Program: [www. http://www.ncr.com/about-ncr/channel-partners](http://www.ncr.com/about-ncr/channel-partners)





## RealPOS™ 25

### PRODUCT DESCRIPTION

Engineered for demanding retail environments, the NCR RealPOS 25 delivers superior value with its versatile design, robust performance and high reliability. Engineered to provide years of dependable operation, the NCR RealPOS 25 features a rugged enclosure, long-life LED display and fanless operation to increase reliability. It also provides efficient serviceability with quick access to internal components, intuitive cable routing and diagnostic indicators – making the system simple to install, simple to use and simple to service.



### SPECIFICATIONS

- **Cashier Interface:** 15" resistive touchscreen
- **Form factor:** Slim all-in-one design, fanless
- **Processor:** Intel Atom D2550 Dual-Core 1.86 GHz
- **Memory:** 2 GB DDR3, expandable up to 8 GB
- **Storage media options:** 250 GB Hard Disk Drive  
80 GB Solid State Drive
- **Operating System:** Windows® Embedded POSReady 2009  
Windows Embedded POSReady 7 (32 bit)  
Windows 7 Professional (32 bit)
- **Warranty:** 1-year extended warranty available



## RealPOS™ 40/60

### PRODUCT DESCRIPTION

The NCR RealPOS 40 is reshaping point of sale with a breakthrough design that delivers an exceptional combination of performance, reliability and energy efficiency, all at an incredibly affordable price. The NCR RealPOS 40 breaks away from traditional POS designs with a sleek, modern look that complements today's retail formats. Forty percent smaller than its predecessor, the NCR RealPOS 40 features the smallest form factor in its class. The space-saving design enables versatile configuration options, conserving valuable checkout space.



### SPECIFICATIONS

- **Form factor:** Compact Modular POS Terminal, fanless
- **Processor:** Intel Atom D2550 Dual Core 1.86 GHz  
*RP60: Intel Celeron G1610T Dual Core Processor 2.3GHz*  
*RP60: Intel Core i3-3240 Processor 2.9GHz*
- **Memory:** 2 GB, expandable up to 4 GB  
*RP60: 4GB DDR3, expandable up to 16GB*
- **Storage media options:** 250 GB 2.5" SATA Hard Disk Drive  
80 GB 2.5" SATA Solid State Drive
- **Operating System:** Windows Embedded POSReady 2009  
Windows 7 Professional for Embedded Systems (32 bit)  
Windows Embedded POSReady 7 (32 bit)  
*RP60 only: Windows 7 Professional for Embedded Systems (64 bit)*  
*RP60 only: Windows Embedded POSReady 7 for Embedded Systems (64 bit)*
- **Warranty:** 1-year extended warranty available



## RealPos™ 50

### PRODUCT DESCRIPTION

Designed for demanding retail environments, the NCR RealPOS 50 provides outstanding performance, versatility and reliability to enhance customer service and reduce costs while maximising your point-of-sale (POS) investment. The NCR RealPOS 50 provides the performance you need to run the latest graphical touch-based applications and deliver fast, personalised service. The NCR RealPOS 50 consists of processor technology, enabling you to quickly respond to new business initiatives and maintain a competitive advantage.



### SPECIFICATIONS

- **Cashier Interface:** 15" resistive and capacitive touchscreens
- **Form factor:** Slim all-in-one-design
- **Processor:** Intel Celeron T3100 Dual-Core 1.9GHz
- **Memory:** Standard 2GB DDR3 (resistive),  
standard 4GB DDR3 (capacitive)  
expandable up to 8GB
- **Storage media options:** 250 GB Hard Disk Drive  
80 GB Solid State Drive
- **Operating System:** Windows 7 Professional (32 bit or 64 bit)  
Windows Embedded POSReady 2009  
Windows Embedded POSReady 7 (32 bit or 64 bit)
- **Warranty:** 1-year extended warranty available



## RealPOS™ XR7

### PRODUCT DESCRIPTION

The NCR RealPOS XR7 features a stylish all-in-one design, best-in-class performance, exceptional versatility, plus the ruggedness and data security you need for mission-critical store environments. Simply stated, it's POS Perfected.



### SPECIFICATIONS

- **Display:** 15" or 18.5" widescreen touch
- **Form factor:** All-in-One Design
- **Processor:** Intel Celeron® – 1820TE  
Intel Core i3® – 4330TE  
Intel Core i5® – 4570TE
- **Memory:** 4 GB memory DDR3 1660  
8 GB memory DDR3 1667
- **Storage media options:** 80 GB Solid State Drive  
Dual 80 GB Solid State Drive (RAID)  
500 GB HDD (HDD storage is only recommend when capacity requirement exceed 80 GB )  
Dual 500 GB HDD
- **Operating System:** Windows Embedded POSReady 2009 for Embedded Systems  
Windows 7 Professional 32 bit for Embedded Systems  
Windows 7 Professional 64 bit for Embedded Systems  
Windows Embedded POSReady 7 (32 bit or 64 bit) for Embedded Systems
- **Warranty:** 1-year extended warranty available

## NCR Point-of-Sale Technology Solution makes the everyday easier at leading German Bakery

### STANGENGRÜNER MÜHLENBÄCKEREI MODERNIZES POINT-OF-SALE SOFTWARE AND HARDWARE TO PROVIDE CUSTOMERS WITH EXCEPTIONAL SHOPPING EXPERIENCES

AUGSBURG, Germany, February 11, 2014 – NCR, the global leader in consumer transaction technologies, and a NCR value-added reseller (VAR) for retail and hospitality, are modernizing the point-of-sale (POS) infrastructure of all 109 branches of the German bakery chain Stangengrüner Mühlenbäckerei. The complete solution consists of software and hardware along with services and support.

Stangengrüner Mühlenbäckerei is known for using recipes that have been handed down for generations. With the latest POS technology, the bakery's customers can enjoy the tastes and smells of the old world, but are quickly on their way in today's fast-paced society.

The NCR RealPOS 25 gives the bakery a compact and convenient touch-screen POS solution, ideal for a high-traffic environment. The bakery uses the EasiPOS cash and Central Store Office (CSO) software that was specifically developed for the bakery business. The solution ensures future transactions and pricing changes can be managed centrally. Daily receipts are also analyzed from a central location, giving the Mühlenbäckerei a quick overview of each individual branch's sales. The open software architecture of the NCR RealPOS 25 provides problem-free installation for future software updates as they are available.

Due to its design, the POS technology enables small and mid-sized retailers to realize significant energy savings, since it features an energy-saving processor and runs without a cooling fan. With its compact design, the technology is easy to setup and maintain. Its color and branding can be customized according to a retailer's individual preferences and can be used either as a POS workstation or multimedia kiosk for self-service applications.

"We want to reflect on our traditions, but at the same time offer our customers a better shopping experience using modern solutions," says Volker Seifert, CEO at Stangengrüner Mühlenbäckerei. "NCR technology allows us to standardize the infrastructure of the cash systems across our branches. We chose NCR for its low running costs and high investment protection. As a result, we are making day-to-day business easier for our employees and more pleasant for our customers."

The bakery started as a windmill in 1861. Today it has 610 employees in 109 branches in the states of Saxony, Thuringia, Saxony-Anhalt and Bavaria.

"The fact that such a traditional firm like Stangengrüner Mühlenbäckerei has chosen to use our complete POS technology solution really shows how important innovative and efficient technology is for day-to-day retail," explains Stefan Clemens, Area Sales Leader, NCR Retail. "NCR POS technology solutions enable retailers to profit from higher productivity and a quicker return on investment."

The NCR reseller will take over the installation of the NCR RealPOS 25 and its subsequent service and support.

# I AM THE NCR REALPOS™ 50

Get the power you need – with a versatile design.



Designed for demanding retail environments, the NCR RealPOS 50 terminal provides your customers with outstanding performance, versatility and reliability to enhance customer service and reduce costs while maximizing point-of-sale (POS) investment.

**We are NCR. The future of retail is here.**

ncr.com  
©2013 NCR Corporation





## micros®

### MICROS – Hardware, Software and Services from one Source

MICROS Systems, Inc. provides leading enterprise-wide applications, services and hardware for the hospitality and retail industries. The portfolio includes all software and hardware components, complemented by a unique support and service concept. More than 567,000 customers in over 180 countries rely on solutions from MICROS.

MICROS combines its industry knowledge and expertise to provide cloud-based, mobile and on-site solutions that allow its clients to streamline operations and successfully engage their customers. MICROS applications include solutions for cross-channel management, POS, eCommerce, guided selling, CRM, supplier and product management, loss prevention, workforce management and merchandise planning. MICROS services comprise of hosting and SaaS, platform implementation and integration, managed services, etc.

MICROS hardware includes user-friendly cash cassettes and cash drawers and versatile flexi-stands for the space-saving installation of different POS components. For the effective theft

protection of EFT terminals and tablet PCs lockable flexi-stands are available.

With mStation and mTablet, MICROS additionally offers a hardware solution for the mobile world. The MICROS mTablet is a tablet PC, which is aligned in its performance and robustness to the needs of the hospitality and retail industry. In conjunction with the charging and docking station MICROS mStation, MICROS mTablet becomes a full stationary POS system with numerous connection options for different peripherals.



MICROS hardware is flexible, robust and versatile and is proven in practice more than thousands of times across the world. Its construction is designed to deliver a long life.

### micros® MICROS Retail Euro Cash Cassette

#### PRODUCT DESCRIPTION

The spacious MICROS Retail Euro Cash Cassette can be used with a large number of POS systems and can accommodate any type of currency. It is equipped with eight coin and six note compartments. There is an additional compartment for receipts, which can be accessed from the outside using the drop-in slit. The cash cassette is made of high-quality and environmentally friendly plastic. Both guarantee a long service life.

#### SPECIFICATIONS

- **Dimensions:** 482mm x 100mm x 175mm (W x H x D)
- **Weight:** Cash Cassette: approx. 1.9 kg, Base: approx. 0.5 kg
- **Colours:** Light Grey: RAL 9002, Anthracite: RAL7021
- **Electric models:** 12V, 24V, 36V, customised models
- **Compatible with:** All major POS systems
- **Material:** Plastic
- **Warranty:** 1 year



### micros® MICROS Retail Flexi-Stand for Card Readers

#### PRODUCT DESCRIPTION

With the MICROS Retail Flexi-Stand for EFT terminals all common card readers can be arranged in a space-saving manner. All cables are routed inside the tubes. This helps to prevent cable breakages. For effective protection against tampering and theft there is a lockable flexi-stand available. Depending on the type of card readers used, it offers flexible options, from interlocked slide systems to the use of locks.

#### SPECIFICATIONS

- **Dimensions:** Different, depending on the type of card reader  
Length stand pipe: between 90 and 140mm  
Diameter: between 40 und 56mm
- **Inclination:** Adjustable, 350° rotation
- **Material:** Stainless steel or steel painted
- **Available for:** Arthema Hybrid  
ICP BIA  
Ingenico 3380  
Ingenico iPP 320/350  
Ingenico iCT 250  
Ingenico iPP480  
VeriFone SC5000  
VeriFone VX820  
VeriFone H5000
- **Colours:** Black
- **Warranty:** 1 year



\* Individual customised designs available!

### micros® MICROS Retail Cash Drawer

#### PRODUCT DESCRIPTION

The MICROS Retail Cash Drawer is light yet robust and offers a lot of space despite compact dimensions. The removable and foldable coin insert improves handling, simplifies transport and takes up little space when stored in a safe. The cash drawer is equipped with a high-quality lock with up to 50 combinations. It features a wide receipt drop-in slit at the front for secure insertion of receipts.

#### SPECIFICATIONS

- **Dimensions:** 385mm x 95mm x 435mm (W x H x D)
- **Weight:** 4.75 kg
- **Colours:** Light grey: RAL 9002  
Anthracite: RAL 7021
- **Electric models:** 12V, 24V, 36V, customised models
- **Compatible with:** All POS systems
- **Delivered with:** Standard lock, manufacturer logo,  
8 coin and 4 note compartments
- **Material:** Plastic
- **Warranty:** 1 year



# COGNITIVE TPG

## The Innovation to inspire

CognitiveTPG is an established worldwide leader in the design and development of innovative print technology solutions for a broad range of markets, including retail. As industry evolves, we collaborate face-to-face with our customers so we can respond to their needs quickly with inspired solutions that deliver effective results.

CognitiveTPG carries a full line of Point of Sale and Desktop Barcode Label printers. Our printers are best known for their rugged and reliable design. In fact, we are often referred to as the company that makes “the Printer you can stand on.” Many of our legacy printers are still in the field today, fully operational. For over 35 years businesses around the globe use our print technology to maximize productivity and efficiency.

### INDUSTRIES

- Retail
- Hospitality
- Banking and Financial Institutions
- Healthcare
- Transportation & Logistics
- Parcel Post
- Gaming & Lottery
- Manufacturing & Distribution

### APPLICATIONS

- Receipt printing
- Check validation and Impact Slip printing
- Label printing for asset tracking, wristband and prescription labels, shipping labels, shelf labelling, return-to-vendor label, and many more.



### RETAIL

Today's retailers – whether they are a small boutique, large chain or mass merchandiser – are increasingly concerned with operational control, technology expenses, and workflow efficiency. CognitiveTPG's products are designed to meet both the front of the store applications as well as the back of the store for applications such as shelf labeling, item tag labeling, POS receipt and validation printing, return to vendor labelling, and shipping and receiving labels.

### HOSPITALITY

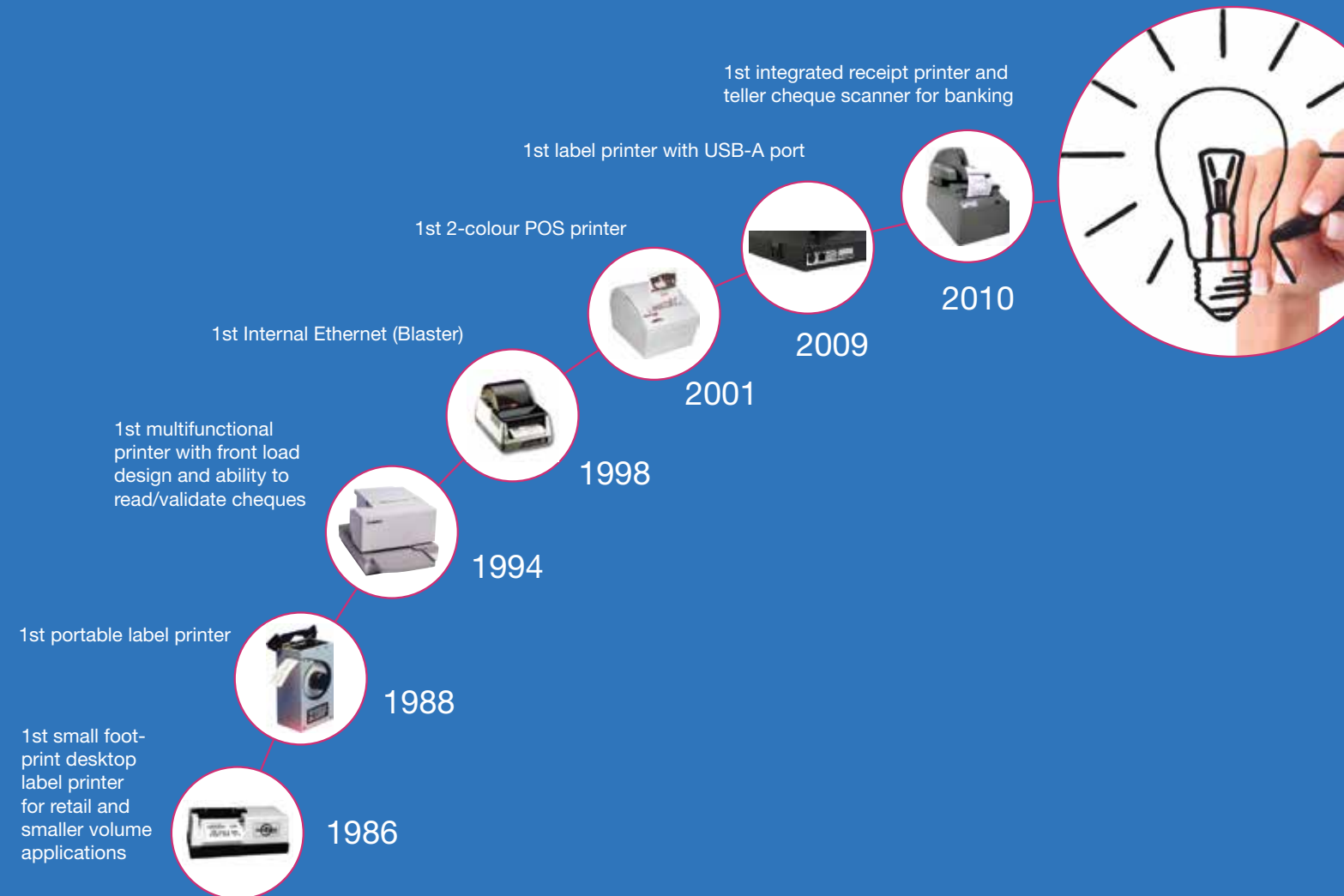
CognitiveTPG's receipt printers are designed with built-in internal and external dams to prevent damage to the print mechanism. The new Spill Guard accessory is a perfect complement especially for the more challenging hospitality applications

where accidental spills can and do happen. The A798 or A799 with Spill Guard cover provides added protection and ensures continuous printing.

### HEALTHCARE

CognitiveTPG's healthcare printing applications address many of the issues facing hospitals, clinics, and pharmacies. Cognitive TPG healthcare printers enhance patient safety by increasing accuracy with admissions and lab work, improving inventory management and asset control and lowering costs and streamlining workflow within pharmacies. Our printers are proven in hospitals, pharmacies, and medical facilities around the world to reliably print barcode labels, wristbands, specimen labels, prescriptions, and business forms.

## CognitiveTPG Innovation Highlights through the Years



### YOUR PARTNER

For over 35 years CognitiveTPG has been designing and developing innovative print technology including the 1st desktop thermal label printer, 1st portable thermal label printer, 1st multifunctional thermal/impact hybrid printer, 1st internal Ethernet

on a desktop label printer, 1st two-colour POS receipt printer, 1st to have an internal USB Host port on the label printer, and the 1st integrated receipt and teller cheque scanner. Our history as a pioneer in thermal print technology speaks for itself.

Find out more at [CognitiveTPG.com](http://CognitiveTPG.com) and visit us on our You Tube Channel to watch our latest videos at:

<http://www.youtube.com/user/MyCognitiveTPG>



## COGNITIVE TPG A798 and A799 Receipt Printers

### PRODUCT DESCRIPTION

The CognitiveTPG A798 and A799 receipt printers combine robust and reliable design with easy loading and set up, fast print speeds, dual motors with newly released reliability specifications, and industry leading warranties. The A798 printer is priced to fit any budget and the A799 printer is designed to offer advanced performance, functionality, and customisation. Ideally suited for hospitality, retail, grocery, and convenience environments.

### SPECIFICATIONS

- **Print method:** Direct Thermal
- **Print speed:** 150 mm/sec (A798) and 250 mm/sec (A799)
- **Resolution:** 203 dpi
- **Knife:** Self-sharpening ceramic rotary
- **Receipt (Columns):** 44/56
- **Memory (RAM):** 128 KB (A798) & 512 KB (A799)
- **Memory (Flash):** 2 MB (A798) & 4 MB (A799)
- **Communications:** Serial (25 and 9 pin), Parallel, USB, Powered USB, and Ethernet (A799 only)
- **Printlines (MCBF):** 72 million
- **Knife Cuts (MCBF):** 3 million
- **Printhead Life:** 242 km
- **Optional:** Spill Guard Accessory (A798 & A799), Maxstick Option on A799
- **Warranty:** 3 year (A798) & 4 year (A799)  
Extended warranty available



## COGNITIVE TPG C-Series Compact Thermal Label Printer

### PRODUCT DESCRIPTION

The C Series is CognitiveTPG's most versatile line of thermal label printers. The size of a small desktop printer but with the performance of a big box printer, C Series printers deliver value and functionality to fit multiple applications and industries. The C Series offers many connection options, fast print speeds, large roll capacity, ample RAM and Flash memory, and an LCD screen combined with a USB-A port for standalone applications.

### SPECIFICATIONS

- **Print method:** Direct Thermal or Thermal Transfer
- **Print speed:** up to 8 ips (203.2 mm/sec) with LCD display
- **Resolution:** 203 dpi, optional 300 dpi
- **Roll diameter (max):** 8 ip5 (203.2 mm/sec)
- **Indexing:** continuous, gap, black bar, black mark, notch/hole
- **Memory (RAM):** 16MB
- **Memory (Flash):** 8MB
- **Communications:** USB-A/B, Serial or Parallel, Ethernet (internal)
- **Programming Language:** CPL, EcPL, ZcPL, and optional PCL5
- **Warranty:** 2 year (extended warranty available)
- **Models:** 2-inch and 4-inch



## COGNITIVE TPG A760 Two-Colour Thermal/Impact Hybrid Printer

### PRODUCT DESCRIPTION

CognitiveTPG invented the industry's first hybrid printer by combining thermal and impact printing in a single solution. The A760 provides an accurate, user friendly way to validate cheques, print on multi-part forms and print a receipt. The A760 has the industry's widest impact print width.

### SPECIFICATIONS

- **Print method:** Direct Thermal and 9-Pin Impact
- **Two Color Capability:** Yes
- **Print speed:** 180 mm/sec (DT) and 16 mm/sec (Impact)
- **Resolution:** 203 dpi
- **Receipt (Columns):** 44/56 (DT) and 66/80 (Impact)
- **Form/Paper (Impact):** 1-5 ply multipart, and .400 mm max thickness
- **Memory:** Up to 2 MB
- **Communications:** Dual 9-in, RS232/USB, 25-pin RS-232, Powered USB
- **Micr reader:** Integrated in slip station
- **Knife Cuts (MCBF):** 1.5 million
- **Printhead Life:** 200 KM
- **Warranty:** 2 year (extended warranty available)



## COGNITIVE TPG DLXi Thermal Barcode Desktop Label Printer

### PRODUCT DESCRIPTION

CognitiveTPG carries on the tradition of the well-known rugged and reliable Blaster and Blazer printers with its DLXi. The DLXi combines legendary reliability with the latest communication interfaces and performance. The DLXi is designed to operate in challenging environments while providing a seamless migration to the latest technology.

### SPECIFICATIONS

- **Print method:** Direct Thermal or Thermal Transfer
- **Print speed:** 5 ips (127 mm/sec)
- **Resolution:** 203 dpi
- **Roll diameter (max):** 4.7" (119 mm)
- **Indexing:** black bar, notch, and gap
- **Memory (RAM):** 16 MB
- **Memory (Flash):** 8 MB
- **Communications:** Serial (DB9), Parallel, Ethernet USB-A & B
- **Programming Language:** Cognitive Programming Language (CPL), EcPL and ZcPL
- **Warranty:** 2 year (extended warranty available)
- **Models:** 2-inch and 4-inch



## A799 Collection hits High Fashion



### CHALLENGE

When a high-fashion designer and retailer, best known for its designer handbags and accessories decides to replace its receipt printing laser printers, they needed a thermal receipt printer that was capable of doing justice to their famous designer image. The challenge was finding a thermal printer capable of printing the company logo to their satisfaction.

### SCENARIO

The switch from laser to thermal printing in any environment involves not only a financial decision but also operational considerations. A combined need to reduce printing costs, as well as the desire to reduce printer downtime and increase workspace, drove this high-end retailer to seek an alternative solution to their current laser printer setup. Thermal printers require no toner and have a footprint up to three times smaller than that of a desktop laser printer.

Once the retailer made the decision to convert to thermal receipt printing technology, the next step was to decide which manufacturer could provide the best solution for their particular application. The overriding factor in their final decision would be the printer's capability of accurately reproducing the designer's logo on the receipt. Although simple in design, the thin lines of the text and levels of grayscale in the logo required precision manipulation of the logo artwork and customised support to ensure the level of print quality would meet the designer's standards.

### SOLUTION

"CognitiveTPG's support with this project was tremendous. Their account representative demonstrated how the A799 two-color receipt printer with its resident ReceiptWare software could print the logo with clarity and density," said the Retail Support Specialist for the designer/retailer. The retailer tested the A799 product using the ReceiptWare software with four logo designs and each printed crisply and cleanly. CognitiveTPG's ReceiptWare software enables users to turn an ordinary receipt into a marketing tool by adding top and bottom logos, margin messages, watermarks for security, and other conditional graphics.

Approximately 150 printers were rolled out to 18 of the total 25 stores in the United States, and feedback from the employees has been nothing but praise: "No more messy black toner ruining my clothes or the constant maintenance! The A799 printers make our jobs easier so we can focus on the customer."

## Having trouble finding the right fit? We've got you covered.



- Complete line of POS and desktop label printers
- Robust printer language emulations
- Stand-alone and network applications
- Flexible size, color, speed and communications options to meet all your customer requirements



**COGNITIVE TPG** Innovation to built to last  
www.CognitiveTPG.com





## Solutions for Retail

In the fast-paced, rapidly changing retail and hospitality industry, we make it easy to keep up with technology trends to boost your business.

### UNRIVALLED QUALITY

All Epson products have one thing in common – outstanding quality. This is based on our careful attention to customer needs. We were the first mini printer manufacturer to acquire accreditation for ISO9001, the strictest of the ISO9000 international quality standards. This is just one more example of the measures we take to bring you total product satisfaction. As a result Epson is Europe's number one POS and dot matrix printer manufacturer.\*

### SAVE ON ENERGY, SAVE ON COST

Epson combine environmental responsibility with a no-compromise approach to produce the most advanced retail products around. The results are products that lead the world in point of sale performance, deliver a low total cost of ownership for your customers and are more eco friendly for our world.



### INTELLIGENT RECEIPT PRINTERS

The Epson TM-DT and TM-i Series can print without drivers simply by using HTML based ePOS technology. This technology enables users to control other printers and major POS peripherals\*\* through the web, independent of the platform and without the need of the web or the need to install additional drivers.

\*\*TM-T88V-DT only

### MOBILITY

The intelligence inside the printer and ePOS technology gives retailers the ability to build full mobile POS. Sales people can use tablets, smartphones and other mobile devices to improve the sales process. Even customers can use their own mobile device to make their orders, taking the retailer to a new level in their customer relationship. Additionally, the web server function of the Epson TM-DT allows a continuous operation, even in the event of a disconnection of the network, offering a resilient web-based POS environment.

\*Interconnection Consulting 2013

# SAVE ON ENERGY, SAVE ON COST

Our most innovative and eco friendly POS printers yet



REDUCING PAPER COSTS

**-30%**

Our latest Epson point of sale printers feature Top Margin Reduction and Auto Paper-Saving functions.

REDUCING CARBON FOOTPRINT

**-22%**

Our retail printers have the lowest carbon footprints over the complete product life cycle.

REDUCING ENERGY CONSUMPTION

**-85%**

This lowers costs for retailers and helps to improve our green credentials.

To find out more visit [www.epson.co.uk/ecopos](http://www.epson.co.uk/ecopos)



Epson delivers the technology to suit a range of retail and hospitality needs, and allows businesses to provide first class service and an engaging experience for customers.



### MOBILE, CLOUD-BASED POS

In a rapidly-changing retail environment the ideal is a differentiated, smooth shopping experience. With Epson's POS systems, staff can handle transactions on the move anywhere in store via a cloud-based POS system that integrates with existing IT and makes multi-channel retailing a reality.

## EPSON<sup>®</sup> TM-T20II Receipt Printer

EXCEED YOUR VISION

### PRODUCT DESCRIPTION

Fast, reliable and affordable, this all-in-one receipt printer suits any retail space. It can be mounted horizontally or hung on a wall and has an easy access paper cover and intelligent cable management. This product comes complete with installation CD, all mains and communication cables, and wall-hanging bracket.

### SPECIFICATIONS

- Print Technology: Thermal Line
- Print Speed: 200 mm/sec
- Max. Media Width: 80 mm
- Resolution: 203 dpi
- Cutter: Partial cut
- Interfaces: USB 2.0 typ Mini-B, RS232 (optional), Ethernet (optional)
- Color: Epson Dark Grey, Epson Cool White
- Warranty: 24 months carry in



## EPSON<sup>®</sup> TM-T88V Receipt Printer

EXCEED YOUR VISION

### PRODUCT DESCRIPTION

Introducing the market leading thermal printer in its class, and our most economical, low-resource thermal receipt printer yet. This flagship model brings your business even higher performance printing with no fuss and a very low cost of ownership. Like the Epson TM-T88 generations before it, innovation is at the heart of this printer. It is the world's first ENERGY STAR<sup>®</sup> approved thermal receipt printer, and the first greyscale graphic POS printer too.

### SPECIFICATIONS

- Print Technology: Thermal Line
- Print Speed: 300 mm/sec
- Max. Media Width: 80 mm
- Resolution: 180 dpi
- Cutter: Partial cut
- Interfaces: RS232, USB, Powered USB, WiFi
- Color: Epson Dark Grey, Epson Cool White
- Warranty: 4 years RTB



## EPSON<sup>®</sup> TM-T70II Receipt Printer

EXCEED YOUR VISION

### PRODUCT DESCRIPTION

The first POS printer with front-facing controls, built to bring speed, simplicity and enhanced customer service for retail and hospitality settings where space is at a premium. Compact, reliable and robust, it fits easily into any retail environment. The TM-T70II is able to print receipts in different shades of grey. Advanced graphic and barcode printing capabilities allow for highly customized layouts. Logos and promotional messages can be added with ease.

### SPECIFICATIONS

- Print Technology: Thermal Line
- Print Speed: 250 mm/sec
- Max. Media Width: 80 mm
- Resolution: 180 dpi
- Cutter: Partial cut
- Interfaces: USB, Powered USB, Ethernet with WiFi options
- Color: Epson Dark Grey, Epson Cool White
- Warranty: 24 months carry in



## EPSON<sup>®</sup> TM-C3500 Colour Label Printer

EXCEED YOUR VISION

### PRODUCT DESCRIPTION

The Epson TM-C3500 brings high-quality colour and on-demand versatility to your labels, tags and tickets. Featuring high-quality print speeds of up to 103mm/sec and individual pigment ink cartridges, your business will save time and money on outsourcing label production, by printing labels on-demand. This printer is BS5609 certified, for GHS chemical labelling applications with a range of Epson certified media resistant to most chemicals and permanent acrylic adhesive with excellent water and heat resistance.

### SPECIFICATIONS

- Print Technology: Epson Micro Piezo™ Serial inkjet
- Print Speed: 103 mm/s
- Max. Media width: 104 mm
- Resolution: 720 x 360dpi
- Cutter: Yes
- Interfaces: Dual interfaces, USB and Ethernet
- Color: Epson Cool White
- AID: Automatic ink detection and nozzle cleaning
- Warranty: 12 months carry in





## EPSON<sup>®</sup> TM-T70-i

EXCEED YOUR VISION

### PRODUCT DESCRIPTION

Print receipts directly from tablet PCs and other mobile devices. The TM-T70i can print from any device that is running a popular web browser. No need for drivers. Using a unique built-in intelligence called ePOS-Print, the TM-T70i is able to receive XML commands from web applications in addition to communicating directly with browsers supporting HTML 5 and the standard Android browser. The TM-T70-i has its controls and paper loading at the front of the device, as well as a splash-proof housing, making it ideal for the hospitality environment.

### SPECIFICATIONS

■ Print Technology:	Thermal Line
■ Print Speed:	170 mm/sec
■ Max. Media Width:	80 mm
■ Resolution:	180 dpi
■ Cutter:	Partial cut
■ Interface:	USB, Ethernet, SD
■ Color:	Epson Dark Grey, Epson Cool White
■ Warranty:	24 months carry in



## EPSON<sup>®</sup> TM-T88V-DT

EXCEED YOUR VISION

### PRODUCT DESCRIPTION

Epson TM-T88V-DT has a fast internal processor, 16 or 32 GB storage capacity and comes with Windows POSReady<sup>®</sup>, allowing the retailer to build a complete POS solution without the use of PCs. ePOS technology allows the Epson TM-DT to control other printers as well as other POS peripherals (such as keyboards, displays, barcode readers) without drivers. The compact all-in-one design saves space and is a power efficient point of sale device.

### SPECIFICATIONS

■ CPU:	Intel Atom E640 1.0 GHz, Intel Atom E680 1.6 GHz
■ Software:	WebPOS Config, ePOS-Device <sup>®</sup>
■ Storage:	16 GB SSD
■ Print Technology:	Thermal Line
■ Print Speed:	300 mm/s
■ Max. Media Width:	80 mm
■ Resolution:	180 dpi
■ Cutter:	yes
■ Interface:	USB, Ethernet, SD
■ Color:	EBCK (black) and ENN8.5 (white)
■ Operating System:	Windows POS Ready 2009, Windows POS Ready 7
■ Warranty:	12 months carry in



## EPSON<sup>®</sup> TM-T88V-i

EXCEED YOUR VISION

### PRODUCT DESCRIPTION

Print receipts directly from tablet PCs and other mobile devices. The TM-T88Vii can print from any device that is running a popular web browser. No need for drivers. Using a unique built-in intelligence called ePOS-Print, the TM-T88Vii is able to receive XML commands from web applications in addition to communicating directly with browsers supporting HTML 5 and the standard Android browser. The makes the TM-T88Vii ideal for the hospitality environment using tablet PCs or mobile phones for ordering. Additionally, users can switch between applications without changing printer settings, and configure the printer from mobile devices.

### SPECIFICATIONS

■ Print Technology:	Thermal Line
■ Print Speed:	300 mm/sec
■ Max. Media Width:	80 mm
■ Resolution:	180 dpi
■ Cutter:	Partial cut
■ Interface:	USB, Ethernet, SD
■ Color:	Epson Dark Grey, Epson Cool White
■ Warranty:	4 years RTB



## EPSON<sup>®</sup> TM-P80 Mobile Receipt Printer

EXCEED YOUR VISION

### PRODUCT DESCRIPTION

Epson's second generation of mobile thermal printers are designed to meet the needs of both retail and hospitality markets, for uninterrupted, high-speed, wireless receipt and label printing. Featuring a drop-in paper loading, integrated auto-cutter in a ruggedised design, the Epson TM-P80 ensures maximal reliability in even the harshest environments.

### SPECIFICATIONS

■ Print Technology:	Thermal Line
■ Print Speed:	100mm/s
■ Max. Media Width:	79.5 mm
■ Resolution:	203 dpi
■ Cutter:	No
■ Interfaces:	USB, Bluetooth
■ Battery life:	Wi-Fi 20 hours, Bluetooth 40 hours
■ Color:	Epson Dark Grey
■ Warranty:	12 months carry in



## RETAIL STORE 'ORIGINAL MARINES' CHOOSES EPSON TM-INTELLIGENT

**IN THE FRANTIC WORLD OF FASHION, COULD THE SUCCESS OF A BRAND ALSO DEPEND ON THE RECEIPT PRINTERS USED AT THE POINT OF SALE? THE EXPERIENCE AT ORIGINAL MARINES WOULD SUGGEST THAT THE ANSWER IS YES.**

It is not enough to know how to interpret and anticipate peoples' personal tastes continuously, to develop a perfect supply chain, or to have an excellent distribution network across various channels and a widespread sales network. The retail sector is changing so extensively and so quickly that companies are being forced to manage and control a set of increasingly complex and interlinked variables such as the brand, range, purchasing behaviour and consumer lifestyles.

This is why they need a fast receipt printer which offers the greatest flexibility of use and does not need a PC to connect to the company IT system and that can also be connected to temporary wireless sales terminals such as iPads and Android tablets. Another essential: it must be simple to install, connect and use.

### THE MANAGEMENT OF AN INCREASINGLY COMPLEX BUSINESS REQUIRES INCREASINGLY SIMPLE TOOLS

In 2011, in order to manage the sales network better, Original Marines chose the power2Retail software suite developed by KIR ([www.kir.it](http://www.kir.it)), a company specialising in the development of IT solutions for the retail industry.

"power2Retail can be operated natively on iOS and Android mobile devices, guaranteeing they are fully operational even when offline, in a way that is transparent for users. This fully web-based solution," explains Raffaele Abbate, CIO of Original Marines, "has changed our approach to software management and actively involves all users in our retail chain, from the retailers in our stores to the company's top management."

### EPSON'S FP-90III AND TM-T88V-I: THE 'INTELLIGENT' SOLUTION FOR RETAIL

The power and use of this innovative application, however, run the risk of being limited by the presence of traditional cash registers at the point of sale, that could only communicate with a single PC and required the creation of a driver for every model.

"When Epson showed us the FP-90III and TM-T88V-i models," concludes Raffaele Abbate, "we immediately realised it was the perfect solution for our needs: the possibility to print without drivers and to change applications without having to change printer settings is an important aspect, allowing us to free ourselves from using a specific type of hardware, to connect more devices to the same printer and also to work with mobile devices at periods of increased customer flow."

Original Marines: in the beginning there was a white T-shirt. The brand was founded in 1983 when five entrepreneurs from Campania, Italy, decided to start a company specialising in the production and marketing of casual and sports clothing lines for the whole family.

From the historic white T-shirt of 1983 to total-look collections for the whole family, today Original Marines is a brand synonymous with freshness, independence and a lust for life, while always remaining aware of the quality-price ratio of its products. From the first single-brand shop in 1993, to over 600 today (of which 77 are outside Italy, spanning five continents), the company's evolution has been continuous and unstoppable.

"This innovative technology from Epson has opened up new possibilities for our retail environment, by significantly simplifying our entire business: from managing administrative and managerial data flows to controlling the vast point of sale network across the country." Raffaele Abbate, CIO Original Marines

# THE NEW INTELLIGENT ePOS RANGE



## THE NEXT GENERATION OF RETAIL SYSTEMS

The TM-i Series combine Epson's world-renowned TM receipt printers with Epson's new intelligent solutions for cloud-based POS systems.

Now retailers can print receipts directly from tablet PCs and other mobile devices – no drivers needed. A new approach to a changing market, the TM-i Series will help improve order accuracy, reduce queuing times, streamline IT processes and cut costs.

Save time, energy and money with Epson.

[www.epson.co.uk/epos](http://www.epson.co.uk/epos)

## ENGINEERED FOR RETAIL



**EPSON®**  
EXCEED YOUR VISION



SII 

Seiko Instruments GmbH

## SII – A Company with Tradition and Responsibility

The Seiko Group of today developed from a watch shop in Tokyo that was founded by Kintaro Hattori in 1881. We, Seiko Instruments GmbH, were established in 1983. Our headquarters are in Neu-Isenburg, Germany, and from here we are responsible for Sales and Marketing in EMEA (Europe / Middle-East / Africa).

Our product range includes semiconductors, coin batteries, quartz crystals, thermal printers, print heads and wide format printers. Today about 60 employees in Sales, Marketing, Engineering and Administration look after our customers with competence and reliability.

Our international company culture ensures a quick and dedicated support. From our highly modern logistics centre, with more than 4000m<sup>2</sup> of space, we distribute our products safely and quickly all over the world. We exhibit all our products in our well-equipped showroom. It is the perfect platform for the exchange of technical knowhow, professional training and international distributor meetings.

The traditional respectful behavior shown by our highly motivated team ensures good and long-term business cooperation with our customers.



### TRUST

Trust is the belief in the correctness, truth and honesty of the behaviour and statements of another person, or yourself. Trust is the traditional basis of all our activities. In 1923, all the watches stored at Seiko for repair were destroyed during a disastrous earthquake in Tokyo.

Based on mutual trust between Seiko and their customers, the company owner Kintaro Hattori replaced all the destroyed watches free of charge, without even asking for any proof that a watch had been delivered. In this way he showed his unconditional trust in his customers, just as those customers had trusted him with their watches.

### PRECISION

Precision means striving to establish the absolute accuracy of a measurable value, to enable the highest possible achievement. We are committed to the highest possible precision in all our products. This is also shown through our name Seiko, which is the Japanese word for precision.

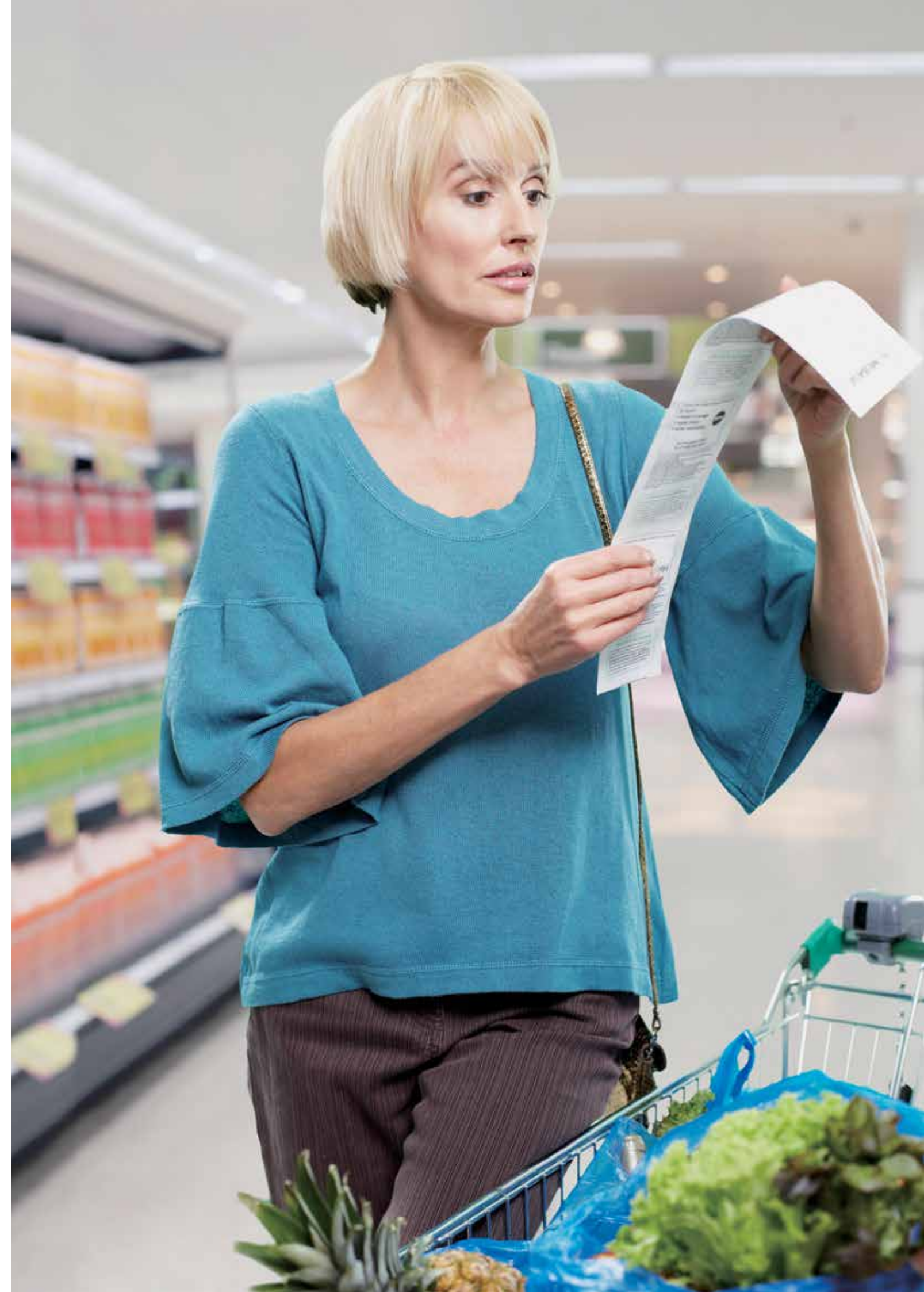
Due to its precision, in 1964 Seiko became the official time-keeper of the Tokyo Olympic Games. By the continuous improvement of high technology, Seiko introduced the world's first quartz watch in 1969. This development greatly improved accuracy, and was a significant milestone in the history of watch manufacturing.

Based on this knowledge, we are continuously developing products manufactured with the highest possible care and precision.

### THERMAL PRINTERS

We are leading experts in high-performance, high-reliability compact thermal printing technology. Our latest portfolio offers a complete range of direct thermal printers with flexible and small footprint designs, to help streamline the integration process.

Offering a full range of thermal printer mechanisms, Seiko Instruments provides Boxed Printers such as Receipt Printers, Mobile Printers and Smart Label Printers. This broad range of products supports all printing requirements in everyday life, including medical devices, self-service technology, point-of-sale, mobile applications, and many more.





## SII RP-E Series

### PRODUCT DESCRIPTION

Small, Fast, Innovative - The RP-E Series. The small footprint makes the series the most compact in the market. The optional top or front paper exit ensures an effective use, even in small spaces. A large multi-color LED bar and a buzzer signal the printer status. The printer comes in black or white and is suitable for numerous applications such as restaurants, retail stores, ticketing devices at hospitals and/or libraries. An optional wall mount kit is available.

### SPECIFICATIONS

- **Model:** RP-E10 (Receipt top-exit)  
RP-E11 (Receipt front-exit)
- **Paper width:** 58mm/80mm
- **Speed:** 350mm/s
- **Barcode:** UPC-A/E, JAN (EAN)8/13, ITF, Code39, Codabar  
Code 93, Code128, PDF417, QR Code
- **Comm. interface:** USB, Serial (RS-232C), USB +  
Powered Serial,  
Ethernet, Powered USB
- **Command:** ESC/POS™ conformity,  
Markup Language
- **Dimensions (WxDxH):** 129 x 129 x 129mm
- **Warranty:** 3 years



RP-E10

RP-E11

## SII SLP650

### PRODUCT DESCRIPTION

Fast, Brilliant, Flexible - The SLP650. The timeless, discrete design of the SLP650 fits seamlessly into various office environments and meets any special demands flexibly and reliably - be it in the painting industry or the healthcare system. The software and the vast variety of labels and tags offer many application possibilities. The Smart Label Printer® 650 is the successor of the popular SLP440 and SLP450. A high capacity tray is optionally available for all SLP models.

### SPECIFICATIONS

- **Model:** SLP650
- **Paper width:** 57.9mm
- **Resolution:** 300 dpi
- **Speed:** 100mm/s
- **Barcode:** UPC-A/E, EAN13, EAN 128, Code39, 1-2 of 5, Codabar,  
Maxi Code, Code128, PDF417, Data Matrix, QR Code
- **Comm. Interface:** USB (SLP650), USB & Serial (SLP650SE)
- **Software:** Windows®2000, 2003, XP, Vista, 7, 8  
Mac OS X 10.5 or later
- **Dimensions (WxDxH):** 113.8 x 172 x 148mm
- **Warranty:** 2+1 years\*

\*Extend your warranty for one additional year by registering online  
([www.smart-label-printer.com](http://www.smart-label-printer.com)) within 4 weeks after purchase



## SII RP-D Series

### PRODUCT DESCRIPTION

Compact, Precise, Efficient - The new RP-D Series. One model, two options: Dual top and front-exit configuration options give you more installation flexibility, including the ability to slide the printer under the counter. Further, an optional wall-mount kit, combined with IPx1 certification for dripping water protection, makes front-exit settings highly suitable for kitchen printing applications. The RP-D is ENERGY STAR® certified and is the most energy efficient in its class.

### SPECIFICATIONS

- **Model:** RP-D10 (Receipt top- and front-exit)
- **Paper width:** 58mm/80mm
- **Speed:** 200mm/s
- **Barcode:** UPC-A/E, JAN (EAN)8/13, ITF, Code39, Codabar  
Code 93, Code128, PDF417, QR Code
- **Comm. interface:** USB, Serial (RS-232C), USB + Powered Serial,  
Ethernet, Powered USB
- **Command:** ESC/POS™ conformity,  
Markup Language
- **Dimensions (WxDxH):** 129 x 129 x 129mm
- **Warranty:** 2 years



RP-D10 Top View

RP-D10 Front View

## SII SLP620

### PRODUCT DESCRIPTION

Fast, Efficient, Cost-effective - The SLP620. The Smart Label Printer® 620 is user friendly and the ideal entry-level model to organise your daily workload in the office. Easy opening of the transparent paper cover allows for a fast change of the label rolls and lets the user keep track of their media use. From address to shipping, to file folder labels or business cards, the SLP620 allows you to spend less time on administration.

### SPECIFICATIONS

- **Model:** SLP620
- **Paper width:** 57.9mm
- **Resolution:** 203 dpi
- **Speed:** 70 mm/s
- **Barcode:** UPC-A/E, EAN13, EAN 128, Code39, 1-2 of 5,  
Codabar, Maxi Code, Code128, PDF417,  
Data Matrix, QR Code
- **Comm. Interface:** USB
- **Software:** Windows®2000, 2003, XP, Vista, 7, 8  
Mac OS X 10.5 or later
- **Dimensions (WxDxH):** 113.8 x 172 x 148mm
- **Warranty:** 2+1 years\*

\*Extend your warranty for one additional year by registering online  
([www.smart-label-printer.com](http://www.smart-label-printer.com)) within 4 weeks after purchase







SEE MORE. DO MORE.

## Zebra Technologies

A global leader respected for innovation and reliability, Zebra provides enabling technologies that allow customers to take smarter actions. Zebra's extensive portfolio of barcode, receipt, kiosk and RFID printers and supplies, as well as real-time location solutions give a digital voice to assets, people and transactions that provides greater visibility into mission-critical information.

### INNOVATION

Zebra's technologies include reliable on-demand printers and wide-ranging software and hardware solutions. Zebra is also at the forefront of emerging technologies including radio frequency identification (RFID), real-time locating systems (RTLS), Global Positioning Systems (GPS) and Ultra-Wideband (UWB).



### GENUINE ZEBRA SUPPLIES

Zebra develops and manufactures supplies specifically for our printers and our customers' core target markets. All of our labels and ribbons are laboratory-tested for optimum performance; helping to minimise wear and tear on printheads, improve quality and productivity and, of course, lower costs

### ZEBRA PROMOTIONS

Please contact your Ingram DC/POS Account Manager for the latest promotions available from Zebra Technologies

For further details please visit: [www.ingrammicro-dcpos.eu/zebra](http://www.ingrammicro-dcpos.eu/zebra)

### RELIABILITY

90% of the Fortune 500 companies rely on Zebra for their top quality, rugged products and service and warranty options. Operating from its European UK headquarters and network of regional offices, Zebra helps companies to identify, locate and track assets (and people) with on-demand speciality digital-printing and automatic identification solutions worldwide. The overall benefit is improved business efficiency.

### QUALITY

Zebra Technologies relentlessly strives to deliver superior quality products and services to our customers and stakeholders. Our commitment to Quality is unwavering. Our ISO 9001 Quality Management System, commitment to defect prevention and continuous improvement efforts are evident in everything we do. Our standard of performance is zero defects.

Customers drive our business. We will always work to exceed customer expectations and deliver superior service. We will never knowingly compromise customer satisfaction.

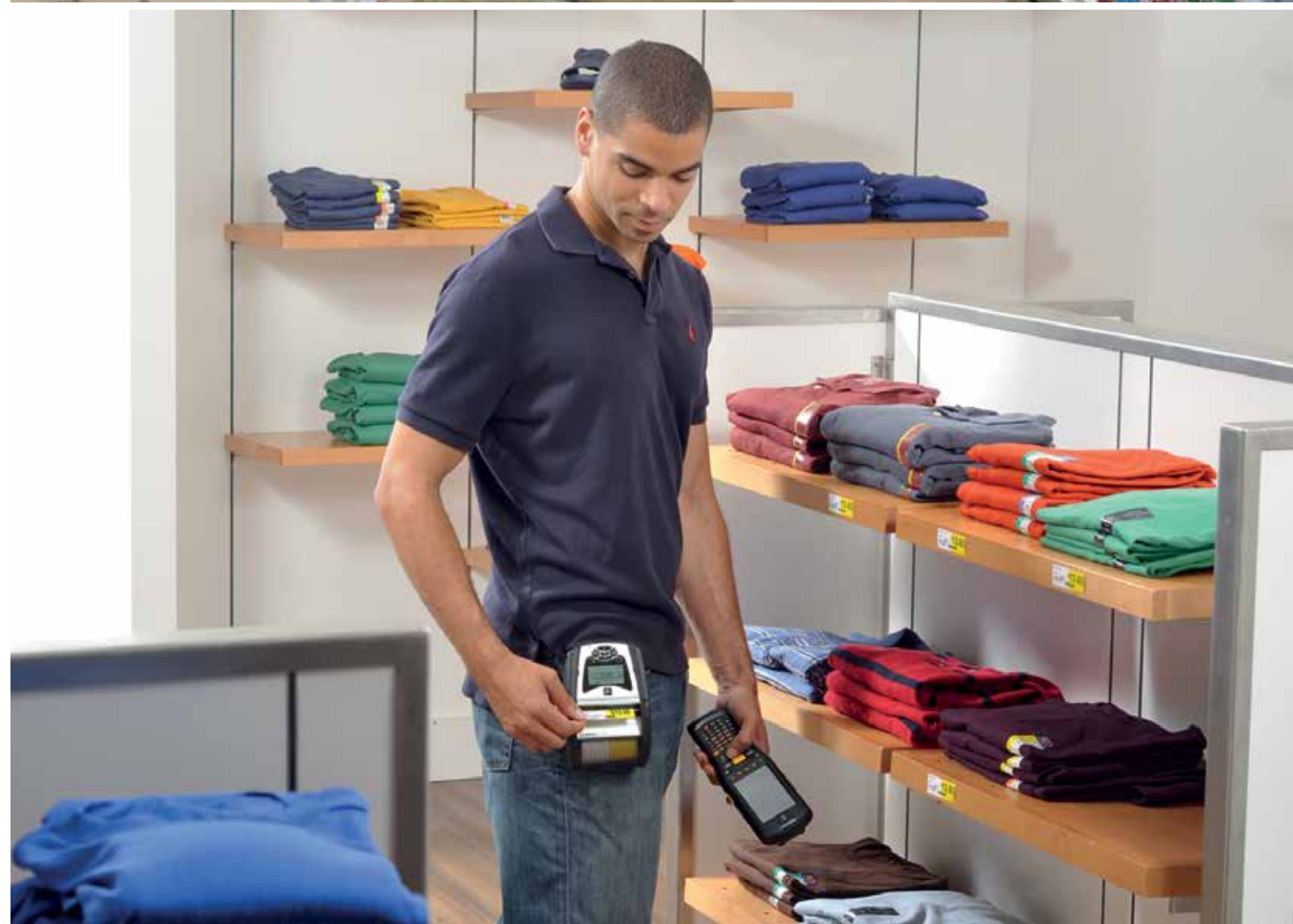
Delivering defect-free products and services through world-class Quality Systems will enable Zebra to:

- Continuously reduce costs, thereby lowering the cost of ownership for customers
  - Better anticipate customer needs
  - Lead the marketplace with innovative new products
- Quality is our competitive advantage.

### ZEBRACARE **ZebraCare**

Safeguarding your printers with ZebraCare provides assurance that our product experts will quickly repair and return your printer to you in working order. Choose the ZebraCare service that suits you:

- Depot Service
- On-Site Service
- Fixed-price Repair







## G-Series Label Printers

### PRODUCT DESCRIPTION

Making a difference to your desktop, Zebra's G-Series compact desktop printers deliver best-in-class speed and performance for print widths up to 104mm (4"). From the basic GK™ model to the feature-rich GX™ model, the G-Series printers offer flexible desktop solutions for any printing application and budget. Built with Zebra durability and reliability, the G-Series GK model provides the best value of all basic desktop thermal printers, while the premier GX model supports a variety of industries and applications with the widest range of features. The GC420 printer offers the same mechanical design as the legacy LP 2844™ and TLP 2844™ models.

### SPECIFICATIONS

- **Print methods:** Direct-thermal or thermal-transfer
- **Print speed:**
  - GC420: 102mm/4" per second
  - GK420: 127mm/5" per second
  - GX420: 152mm/6" per second
  - GX430: 102mm/4" per second
  - GT800: 127mm/5" per second
- **Resolution:**
  - 8 dots per mm/203dpi
  - 12 dots per mm/300dpi (GX430t™)
- **Print width:** 104mm/4.09"
- **Print length:** 990mm/39.0"
- **Memory:**
  - Standard: 4 MB flash; 8 MB SDRAM
  - Optional: 64 MB (68 MB total) flash with real-time clock (GX models)
- **Warranty:** 1 years



## IMZ Series Mobile Receipt Printer

### PRODUCT DESCRIPTION

Light-duty-cycle receipt printer for simple receipt printing applications. Compact size and sleek design are ideal for applications where the user will be wearing the printer for extended periods or for customer-facing environments. Now compatible with iOS, Android and Windows Operating Systems to use with the latest smartphone and tablet devices. It's this combination that makes them a perfect fit for a wide variety of applications and customers.

### SPECIFICATIONS

- **Print methods:** Direct-thermal
- **Print specification:** Supports vertical and horizontal printing
- **Print speed:** Up to 4 ips (102mm/s)
- **Resolution:** 8 dots per mm/203dpi
- **Communication Interfaces:** USB 2.0, Bluetooth 2.1 (standalone) or combined 802.11 a/b/g/n with Bluetooth 3.0 Dual Radio
- **Optional Features:** Linerless printing (with silicone platen roller only) through a Development Services Group request, ZBI 2.x: Powerful programming language that lets printers run standalone applications, connect to peripherals, and much more
- **Warranty:** 1 year



## ZXP Series 1 Card Printer

### PRODUCT DESCRIPTION

The ZXP Series 1 card printer has been designed specifically for customers who need a quality printer at a competitive price. Ideal for low-volume, single-sided printing applications in colour or monochrome, the ZXP Series 1 offers a complete card printing solution with a minimal upfront investment. Its ENERGY STAR® certification and Eco-friendly print cartridges make it the best entry level printer on the market. A small footprint allows the ZXP Series 1 to fit in the tightest workspaces, making it the right choice when space is limited.

### SPECIFICATIONS

- **Print methods:** Thermal-transfer
- **Print specification:**
  - Single-sided printing
  - Full color or monochrome printing
- **Print speed:**
  - 500 Cards/h monochrom single sided
  - 120 Cards/h YMCKO single sided
- **Resolution:** 12 dots per mm/300dpi
- **Communication Interfaces:** USB V2.0 (cable included) - standard
- **Optional Features:**
  - Built-in 10/100 Ethernet
  - Extended product warranty programs
- **Warranty:** 2 years



## EM220II Mobile Receipt Printer

### PRODUCT DESCRIPTION

Now compatible with Apple® iOS, Android™ and Windows® Mobile operating systems, the EM220II is perfect for price-sensitive customers that need to print 2-inch-wide receipts for payments and other types of transactions. Small enough to fit in your pocket, the EM220II is effortless to wear or carry, especially during extended periods of time. The optional magnetic card reader enables users to accept credit cards at the point of service and within the customer's sight.

### SPECIFICATIONS

- **Print methods:** Direct-thermal
- **Print specification:** Supports vertical and horizontal printing
- **Print speed:** Up to 3.5 ips (90mm/s)
- **Resolution:** 8 dots per mm / 203dpi
- **Communication Interfaces:** 802.11 b/g, USB 1.1 Bluetooth™ 3.0 + DER
- **Optional Features:**
  - Linerless printing (with silicone platen roller only) through CAG (Custom Application Group) request
  - 3-track Magnetic Card Reader for convenient transaction processing
- **Warranty:** 1 year





## Bluetooth® keeps Blue Devils mobile

### CHALLENGE

Keep students on the go with portable point-of-sale for busy bookstores and mobile concessions at sporting events, concerts and other events. The DukeCard office supports 600,000 daily transactions from nearly 1,800 card readers.

### SOLUTION

To support more innovation and improved mobility, Duke upgraded from its legacy mobile computers and printers to new models with Bluetooth connectivity and other helpful new features. Duke worked with its retail and mobile application software provider, Sequoia Retail Systems, to specify and evaluate options for its next-generation systems. By switching to Microsoft® Windows® Mobile-based MC70 handheld computers from Motorola's Enterprise Mobility Business, Duke could take advantage of new software applications from Sequoia.

Zebra's iMZ220 was the ideal mobile printer to pair with the new computers. It is smaller and lighter than the legacy Zebra mobile printers in use, while meeting Duke's high standard for reliability. Duke also considered the iMZ220 printer's secure Bluetooth connection to the handheld computer a major upgrade over its previous cabled configuration.

"We like the iMZ220 because it's sleek and durable, but not heavy," says Drummond. "Plus, all the mobile and barcode printers we've had from Zebra have been reliable."

### RESULTS

Mobile printing system has been used for event concessions, special events, yearbook distribution, and for various retail inventory and point-of-sale operations throughout the Duke retail system.

iMZ220's compact size and Bluetooth connectivity has led to noticeable improvements in concession stand operations.

Future plans call for shuttle service drivers to use the mobile computers and printers as well as streamline book buyback operations at the end of each semester.



# BLUETOOTH® PRINTING ON THE MOVE



There are so many occasions when quick, simple receipts are needed on demand. Mobile POS, field sales, field servicing, transport tickets, penalty notices – the list goes on.

Zebra's new iMZ™ mobile printers are the perfect solution. They're compact and lightweight, and can be clipped to a belt or shoulder strap and carried around conveniently all day.

What's more, they offer Bluetooth connectivity, so that they are not only compatible with mobile computing devices, but with all kinds of smartphone and tablet platforms, including Apple® iOS, Android®, WinMobile and BlackBerry®.

They're quick to set up, too, and creating printing apps for them is simple with the Link-OS™ Software Development Kit.

And finally, of course, they're as reliable as you'd expect any device from Zebra to be.

The new iMZ220™ and iMZ320™ printers from Zebra – handily supporting your business needs in the field.

### ZEBRA® iMZ MOBILE PRINTERS

Find out more, or see the range at <http://imz.zebra.com>

Telephone +44 (0)1628 556000 Email [mseurope@zebra.com](mailto:mseurope@zebra.com)

©2013 ZIH Corp. Link-OS and all product names and numbers are Zebra trademarks, and Zebra and representation of Zebra Head are registered trademarks of ZIH Corp. All rights reserved. Bluetooth is a registered trademark of Bluetooth SIG, Inc. Apple is a trademark of Apple, Inc., registered in the U.S. and other countries. Android is a trademark of Google Inc. BlackBerry is a registered trademark of Research In Motion. All other trademarks are the property of their respective owners.



SEE MORE. DO MORE.







## The Art of Automatic Identification



Fast-paced and dynamic, the Automatic Identification and Data Collection industry requires commitment, innovation and adaptability to constant change.

Only state of the art solutions can satisfy the ever-demanding expectations of customers. Datalogic always goes one step beyond. Dedication to exceeding customer expectations has led to the development of the widest range of high performance products and solutions in the industry. This, combined with excellent service, has made Datalogic a world leader for Automatic Data Capture needs.

Datalogic is the market expert when it comes to providing scanning and mobile solutions for specific business needs.

Companies around the globe trust Datalogic to provide reliable solutions that benefit their businesses because quality service, smooth installations and continual support are assured through our extensive Partner network. Datalogic stands behind you every step of the way.

### POS CHECKOUT

Worldwide, retail stores and their point-of-sale checkouts are as diverse as the consumers they serve. However, they do share common characteristics. Retailers must accurately and reliably collect item level transaction data while continually improving the operational efficiency of the checkout. Operational efficiency translates into improving the speed of the checkout which in turn improves the consumers' shopping experience while reducing the costs associated with each item. Despite these commonalities different retail checkout environments have different requirements for collecting item level data. Checkout environments will vary based on the type of store, merchandise mixes, cultural or geographic differences, and consumer preferences.

High performance and high volume checkout environments are characterised by large numbers of checkout stands across the front of the store. Cashiers usually slide the items across an in-counter bar code scanner (usually a high performance bi-optic scanner). Almost all items are moved across the scanner with some exceptions being bulky or heavy items that may be scanned with an auxiliary handheld scanner connected to the primary high performance scanner.

In-store distributed position checkout environments feature checkout counters that can be found anywhere in the store. Cashiers take the scanner to the item in these environments. Depending on the checkout design, a handheld scanner may be the most efficient.

Small counter checkout environments are characterised by a small number (usually 1 to 3) of checkout counters at the front of the store. Cashiers pick up the items and "present" the items to a bar code scanner. These presentation scanners must be small to minimise the amount of valuable counter space they occupy and they must be able to read the bar code at any angle (Omnidirectional scanning).

Datalogic drives continual improvement in checkout efficiency by applying new technologies, revolutionary design form factors, and new developments in software platforms to the performance and operational efficiency of data collection at the POS checkout. Look to Datalogic for the most complete range of in-counter, on-counter, general purpose scanners and mobile computers to satisfy all your POS checkout needs.





## DATALOGIC HERON

THE VISION IS YOURS

### PRODUCT DESCRIPTION

Perfect for use as both a handheld and a presentation style reader, all Heron™ models are lightweight and ergonomically shaped for handheld use and include an auto-sensing stand in the package. Removed from the stand the reader switches to handheld mode; placed correctly in the stand, the reader beeps and automatically switches to hands-free stand mode for presentation reading.

### SPECIFICATIONS

- **Reading Indicators:** Beeper; Datalogic 'Green Spot' good read feedback; good read LED
- **Resolution (Maximum):** 0.100 mm/4 mils
- **Light Source:** Illumination: red LED 640 nm
- **Interfaces:** Keyboard Wedge: D130; RS232: D130; RS232/IBM 46XX: D110, D150; USB: D130; Wand: D130
- **Sealing/Drop:** IP30/1.8m
- **Monitor Type:** NA
- **Form factor:** All in one
- **Warranty:** 5-year factory warranty



## DATALOGIC QuickScan QD2400

THE VISION IS YOURS

### PRODUCT DESCRIPTION

The QuickScan™ QD2400 imager features a new illumination and aiming system developed with the unique intent to reduce visual stress of the operator during the daily scanning activities. It consists of a soft, dark red illumination combined with two blue LED triangles pointing at the targeted bar code. The result is a precise aiming system which contributes to low eye fatigue, yet still allows top operator efficiency.

### SPECIFICATIONS

- **Reading Indicators:** Beeper (adjustable tone and volume); Datalogic 'Green Spot' good read feedback; good read LED
- **Resolution (Maximum):** 0.102 mm/4 mils (linear codes)
- **Light Source:** Aiming: 2 blue LEDs; illumination: red LED 610 - 650 nm
- **Interfaces:** Keyboard Wedge/OEM (IBM) USB/RS-232 /USB
- **Sealing/Drop:** IP42/1.5m
- **Monitor Type:** N/A
- **Form factor:** All in one
- **Warranty:** 5-year factory warranty



## DATALOGIC Gryphon I GD4400-B 2D

THE VISION IS YOURS

### PRODUCT DESCRIPTION

The Gryphon™ 4000 series represents the premium level of data collection devices from Datalogic ADC for general purpose applications. Designed with people in mind, the Gryphon™ I GD4400-B All-in-One imager blends advanced 2D decoding with motion sensing technology, producing a user-friendly device with outstanding performance.

### SPECIFICATIONS

- **Reading Indicators:** Beeper (adjustable tone); Datalogic 'Green Spot' good read feedback; good read LED
- **Resolution (Maximum):** 1D Linear: 0.102 mm/4.0 mils; Data Matrix: 0.178 mm/ 7.0 mils; PDF417: 0.127 mm/5.0 mil
- **Light Source:** Aiming: 650 nm VLD
- **Interfaces:** GD4410-B: RS-232/IBM 46XX/USB Multi-Interface; GD4430-B: RS-232/USB/Keyboard Wedge/Wand Multi-Interface
- **Sealing/Drop:** IP52/1.5m
- **Monitor Type:** N/A
- **Form factor:** All in one
- **Warranty:** 5-year factory warranty



## DATALOGIC QuickScan I Lite QW2100

THE VISION IS YOURS

### PRODUCT DESCRIPTION

The QuickScan™ Lite QW2100 linear imager is an entry level product created specifically for reading long and truncated bar codes which is common in some areas of the world. It is perfect for use in retail, light manufacturing, document/bill processing and banking/finance environments. It offers snappy reading performance on most 1D bar codes and features a wide scanning angle with an extended scanning line which is perfect for capturing longer and wider bar codes typically found on utility bills and used by manufacturers of electronic parts.

### SPECIFICATIONS

- **Reading Indicators:** Beeper (Adjustable Tone); Datalogic 'Green Spot' good read feedback; good read LED; good transmission
- **Resolution (Maximum):** 0.102 mm/4 mils (1D Codes)
- **Light Source Illumination:** Red LED 610-650 nm
- **Interfaces:** QW2170-BK: RS-232/Keyboard Wedge, QW2120-BK: USB
- **Sealing/Drop:** IP42/1.5m
- **Form Factor:** All in One
- **Warranty:** 3-year factory warranty



## DATALOGIC Elf

THE VISION IS YOURS

### PRODUCT DESCRIPTION

Capitalizing on Datalogic's legendary ergonomics, the PDA packs unprecedented features into a compact form factor built for single handed use. Use of an accelerometer eliminates awkward presentation of on screen data and a unique guitar pick stylus provides for intuitive touch screen navigation. Both a 1D laser scanner and 2D bar code imager enable a wide array of bar codes seen across diverse enterprises. Both have Datalogic's patented Green Spot good read technology to improve user efficiency.

### SPECIFICATIONS

- **Processor:** XScale™ PXA 310 @ 624 MHz processor
- **Memory:** 256 MB RAM / 256 MB Flash memory
- **Operating System:** Windows CE 6.0 or Windows Embedded Handheld 6.5 with Mobile tools: Outlook, Word Mobile, Excel Mobile, Power-Point Mobile, One Note Mobile and Internet Explorer Mobile 6.0
- **Display:** Reflective TFT daylight readable color display, 320 x 240 pixels (CE only) or 640 x 480 (WEHH only), 8.9 cm/3.5 in diagonal, 65K colors, backlight, touch screen
- **Scan Technology:** High performance Laser or Wide aspect 2D imager with Datalogic's patented Green Spot for good read confirmation
- **Communications:** GPS, LAN Summit IEEE 802.11a/b/g, Bluetooth® Wireless Technology, UMTS HSDPA - GSM/GPRS/EDGE
- **Sealing / Drop:** IP64 / 1.5m
- **Form Faktor:** All in One
- **Warranty:** 1-year factory Warranty



## DATALOGIC Magellan 800i

THE VISION IS YOURS

### PRODUCT DESCRIPTION

The Magellan™ 800i omnidirectional presentation scanner uses Datalogic ADC's latest digital imaging technology to provide intuitive and fast reading of 1D and 2D bar codes as well as supporting more advanced features like image capture and EAS tag deactivation. Despite its small size, the Magellan 800i reader provides big performance and reliability along with a rich feature set to provide excellent value in virtually any data collection system.

### SPECIFICATIONS

- **Reading Indicators:** Beeper (adjustable tone and volume); good read LED
- **Resolution (Maximum):** 0.130 mm/5 mils
- **Image Capture:** Optional: 752 x 480 pixels; graphic formats: JPEG
- **Interfaces:** RS-232; USB: OEM USB, USB COM, USB HID Keyboard, USB TEC
- **Form factor:** All in one
- **Warranty:** 3-year factory warranty



## DATALOGIC Memor X3

THE VISION IS YOURS

### PRODUCT DESCRIPTION

Small, slim and light, the Memor™ X3 mobile computer provides excellent ergonomics for single-handed use, and its rugged, sealed construction survives unintentional drops and exposure to water and dust. Laser models feature a Corning® Gorilla® Glass 2 scan window guaranteeing optimum scanning performance. All of the Memor X3 scan engines feature Datalogic's patented 'Green Spot' technology for good-read feedback. The Memor X3 mobile computer stands out with its long-lasting battery options (1430 and 2300 mAh), for its WiFi connectivity IEEE 802.11 a/b/g/n, for its bright 2.4" QVGA touchscreen, and for its performance, powered by a 806 MHz processor.

### SPECIFICATIONS

- **Processor:** XScale™ PXA 310 @ 806 MHz processor on Windows CE Pro models / 624 MHz on Windows CE Core
- **Memory:** System Flash: 512MB, System RAM: 256 MB on all the Windows CE 6.0 Pro models, 128 MB on Windows CE Core models
- **Operating system:** Microsoft Windows CE 6.0 Pro with Microsoft WordPad and Internet Explorer 6.0; Microsoft Windows CE 6.0 Core
- **Monitor Type:** Reflective TFT daylight readable color display QVGA, 240 x 320 pixels, 2.4 in diagonal, 64 K colors, backlight, touch screen
- **Scan Technology:** Reading technology options: Laser; Wideaspect 2D Area Imager; Linear Imager
- **Communications:** LAN: Summit IEEE 802.11 a/b/g/n, Bluetooth® Wireless Technology 2.1 with EDR
- **Sealing / Drop:** IP54 / 1.2m
- **Form Factor:** All in One
- **Warranty:** 1-year factory Warranty



## DATALOGIC Magellan 3200VSi

THE VISION IS YOURS

### PRODUCT DESCRIPTION

The Magellan™ 3200VSi bar code reader brings Datalogic's new imaging technology to the high-volume point-of-sale. This imaging technology provides outstanding performance when capturing hard-to-read bar codes such as truncated (short), out-of-spec, poorly printed and GS1 DataBar™ codes, and provides support for both linear (1D) and 2D label decoding. The Magellan 3200VSi imager enables both sweep and presentation scanning techniques ensuring maximum productivity and ergonomic ease.

### SPECIFICATIONS

- **Reading Indicators:** Beeper (adjustable tone and volume); good read LED; good transmission
- **Resolution (Maximum):** 5 mil
- **Image Capture:** Graphic formats: BMP, JPEG
- **Interfaces:** IBM 46xx; Keyboard Wedge; OEM (IBM) USB; RS-232; USB
- **Warranty:** 3-year factory warranty





## Trenor Chooses the Memor™ Mobile Computer for TOPSHOP & TOPMAN



### OVERVIEW

Trenor Group is a fashion retailer with a franchise of brand stores. The company was founded in 2000 and is headquartered in Stockholm, Sweden. Thanks to an agreement with British fashion company Arcadia Group Ltd., a British retail giant in fashion, Trenor has a portfolio of many different brands, including the widely known TOPSHOP™ and TOPMAN™.

### THE CHALLENGE

Both the TOPSHOP and TOPMAN retail stores used a solution for store inventory management that required a lot of work and that was very time consuming. Every time an inventory procedure needed to be performed, someone from the head office would have to bring a laptop with a specific integrated application to each store, along with another terminal for wireless data transfer. These devices needed to be set up for use in the specific store, and the inventory process could finally begin.

The company wanted to simplify the process, so it began to look for new alternatives. Trenor turned to its existing supplier BDG AB for a new solution to be integrated into its TOPSHOP and TOPMAN stores that would be faster, easier and more efficient. After carefully examining the situation with its partner, Delfi Technologies, BDG AB suggested a standard handheld computer solution using BDGRetail software and Datalogic's Memor™ mobile computer. Trenor tried out this system and the solution proved to be exactly what the company was looking for.

### THE SOLUTION

Each store is equipped with Memor mobile computers. The employees enter their store IDs into the devices and dock them in order to receive the latest articles/EAN/inventory template

automatically. After the information is downloaded, the employees start scanning items. When all the data is collected, the Memor mobile computers are placed in their docks to automatically transfer the data to the ERP system in the head office, completing the inventory procedure in a fraction of the time it took before this new system was implemented.

### THE RESULTS

The Memor mobile computer met and exceeded all the company's requirements regarding time savings, secure flow of data between the device and LS Retail, and easy handling of registered products. Thanks to its network communication capability, the Memor mobile computer also eliminated the previous requirement of a special PC in every store. Staffan Nordensson, IT & Logistics Manager at Trenor AB, comments: "Our new BDGRetail hand terminal solution with the Memor mobile computer was quickly and easily implemented in the stores. We have reduced our staff costs and the administration in-store system has been significantly simplified."

### MEMOR™ MOBILE COMPUTER

Memor™ perfectly fits the retail needs for a small, lightweight, user friendly device able to offer all the features required to operate in the retail environment. Among its features are the possibility of reading various 1D and 2D bar codes and the inclusion of Datalogic 'Green Spot' technology for good read feedback, perfect for noisy environments. Retail store associates can also rely on the highest possible speed and accuracy to complete inventory and accountability activities along with communications tasks in the shortest possible time as the Memor mobile computer provides enhanced connectivity and security.



[www.datalogic.com](http://www.datalogic.com)



## Managing millions SKUs worldwide every day, with eyes closed.

Regardless of how many stores you operate, how many SKUs you stock, or how many employees you have, Datalogic can help you achieve more. Precise automatic data capture solutions and flexible industrial automation systems bring vision to every level of retail.



RETAIL | MANUFACTURING | T & L | HEALTHCARE

**DATALOGIC**  
THE VISION IS YOURS





## For the Moments that matter

Motorola Solutions connects people through technology. Businesses and government agencies around the world turn to Motorola Solutions innovations when they want highly connected teams that have the information they need throughout their workday and in the moments that matter most to them.

You can find Motorola Solutions products and services in a wide range of workplaces. From the retail floor to the warehouse floor, and from the small town police station to the most secure government offices, our products support customers who make up the diverse global economy. We are proud that our products support mobile transactions of all kinds, as well as the safety and security of citizens everywhere.

Our customers rely on us for the expertise, services and solutions we provide, trusting our years of invention and innovation experience. By partnering with customers and observing how our products can help in their specific industries, we are able to enhance our customers' experience every day.

### OUR FOCUS: OUR CUSTOMERS

Working with our global channel partner community, Motorola Solutions reaches an extensive customer base, from small businesses to Fortune 500 companies. Our focus is on developing integrated end-to-end solutions that deliver a clear return on investment, and our products empower individuals through seamless connectivity.

## Point of Sale Solutions

### MAKE CHECKOUTS QUICK AND EASY, TURNING SHOPPERS INTO LOYAL CUSTOMERS

Sometimes, the only interaction shoppers have with your organisation comes at the point of sale. Motorola Point of Sale (POS) Solutions combine our scanning, signature capture and payment device technology, mobile computers and wireless infrastructure with partner applications to help ensure that every visit to the store offers customers a good feeling about your stores and your company.

Each Point of Sale Solution is aimed at improving customer relations while helping sales associates improve the efficiency of transactions. Whether gathering customer feedback, scanning

large items, or speeding up the checkout line, businesses need to use the most reliable technology in the industry to increase sales. Ensure better customer service with Point of Sale Solutions from Motorola.

### FEATURES AND BENEFITS

- Omni-directional data capture technology easily scans items of all sizes and shapes.
- Imagers are used to both take pictures of customers for ID membership cards as well as to scan bar codes for POS transactions.
- Larger items can be scanned without removing them from the basket using cordless scanners.



## MOTOROLA SOLUTIONS DS9208

### PRODUCT DESCRIPTION

The Motorola Solutions DS9208 presentation imager is ideal for the point of sale. It supports 1D and 2D bar codes, whether printed or displayed on mobile device screens, and can be used in either hand-held or hands-free mode. Available in black or white, the DS9208 will fit the most fashionable environments and its compact size requires very little counter space. Omnidirectional scanning ensures maximum throughput and operator comfort.



### SPECIFICATIONS

- Reading Indicators: Beeper; green/red good/bad read Dual LED
- Resolution (minimum): Code 39 4 mil, UPC – 7.8 mil (60%), PDF417 5 mil, Datamatrix 7.5 mil QR Code – 7.5 mil
- Light Source: Aiming dot: 625 nm LED, Illumination: 630 nm LEDs
- Interfaces: USB, RS-232, RS-485 (IBM 46xx protocols), keyboard wedge
- Sealing/Drop: IP50, Withstands multiple 5 ft. (1.5 m) drops to concrete
- Monitor Type: NA
- Form factor: All in one, built in stand, counter top and hand-held use
- Warranty: 3 year factory warranty

## MOTOROLA SOLUTIONS LI2208

### PRODUCT DESCRIPTION

The Motorola Solutions LI2208 linear imager represents the next generation in general purpose 1D scanning. It delivers the same reliability and ergonomics of the popular LS2208, but with enhanced features that enable workers to scan more types of bar codes at a greater distance. Whether they are scanning printed codes or codes displayed on the screen of a phone, tablet, or computer, this best-in-class linear imager delivers unparalleled performance.



### SPECIFICATIONS

- Reading Indicators: Beeper; green/red good/bad read LED
- Resolution (minimum): Code 39 3 mil
- Light Source: LED Class 1 device 617nm (amber)
- Interfaces: USB, RS232, Keyboard Wedge and IBM RS485
- Sealing/Drop: IP42/1.8m
- Monitor Type: NA
- Form factor: All in one, optional hands-free stand
- Warranty: 5 year factory warranty

## MOTOROLA SOLUTIONS ET1 Enterprise Tablet

### PRODUCT DESCRIPTION

Styled like a consumer tablet, the ET1 is all business, ready to enable the next-generation of worker efficiency and productivity for all-day, everyday business use, both inside the four walls and in the field. It is designed for demanding applications, with a tough housing and Gorilla® Glass. Inside, the ET1 WLAN version supports enterprise-class security, remote management, enterprise peripherals, out-of-the-box scanning and more. Outside, the WAN version offers high-speed 4G HSPA+ connectivity, A-GPS and a 5700mAh battery.



### SPECIFICATIONS

- Processor: OMAP 4 Dual Core 1 GHz x 2 + DSP
- Memory: 1 GB RAM, 4 GB Flash plus 4GB micro SD (total of 8 GB flash memory); user accessible micro SD card slot (supports up to 32 GB)
- Operating System: Android 2.3.4 Gingerbread (upgradeable to 4.x)
- Monitor Type: 7" capacitive multi-touch; backlit; Corning® Gorilla® Glass; 30% thicker than most consumer displays; recessed to provide extra shock protection
- Data capture: integrated cameras, optional 1D/2D imager
- Communications: Bluetooth 2.1 WPAN; 802.11a/b/g/n WLAN; 4G/HSPA+ WWAN; A-GPS
- Sealing/Drop: IP54/1.2m
- Form factor: All in one
- Warranty: 1 year factory warranty

## MOTOROLA SOLUTIONS MC18 Retail Mobile Computer

### PRODUCT DESCRIPTION

The MC18 personal shopper is an intuitive, easy-to-use mobile computer that enhances the customer experience by creating shorter lines at checkout and moving customers more quickly through their shopping trip. With the MC18, retailers can market electronically to the customer at the point of decision—in the store aisle—by gathering the customer's purchasing behavior to deliver targeted coupons and suggestions for complementary items to the personal shopping solution, while driving additional spending and perceived added value. This next generation personal shopper has a new large all-touch display providing a true smartphone style user experience. The advanced imaging engine captures any 1D or 2D bar code enabling shoppers to scan their own items, pack items as they shop and check out without a queue.



### SPECIFICATIONS

- Processor: Intel PXA270, 32 bit, 312MHz (MC17A)/520MHz (MC17T)
- Memory: 512 MB RAM/2 GB Flash or 1 GB RAM/4 GB Flash
- Operating System: Windows Embedded Compact 7; Microsoft Internet Explorer Embedded 7
- Monitor Type: Color LCD; 4.0 inch 480x800 WVGA resolution; 16 bits/pixel RGB; LED backlight; capacitive touch screen; Corning Gorilla Glass 3
- Data capture: 1D or 2D bar codes
- Communications: USB 2.0 Client for Microsoft ActiveSync for service and maintenance; Wi-Fi IEEE 802.11a/b/g/n
- Sealing/Drop: NA/1.2m
- Form factor: All in one
- Warranty: 1 year factory warranty

## MOTOROLA SOLUTIONS MK4000

### PRODUCT DESCRIPTION

The MK4000 enables the deployment of intuitive, on-demand, rich, multimedia applications that provide customers at the point of decision with instant and constant access to information. Deployment is easy and cost-effective: wireless LAN connectivity eliminates the need to run a network connection to each device, while its thin profile and VESA mounting provides compatibility with standard wall mounts and stands for simple installation in the tightest spaces.



### SPECIFICATIONS

- Processor: Intel® XScale™ 624 MHz processor
- Memory: 128 MB SDRAM/64 MB Flash
- Operating System: CE.NET 5.0
- Monitor Type: 12.1 in./30.74 cm diagonal LCD touch screen
- Data capture: 1D laser scanner or 2D imager options
- Communications: Wi-Fi 802.11a/b/g; Ethernet
- Dimensions: 30.00 cm H x 31.57 cm W x 6.17 cm D
- Form factor: All in one
- Warranty: 1-year factory warranty

## MOTOROLA SOLUTIONS TC55

### PRODUCT DESCRIPTION

The TC55 pocket-sized all-touch computer has everything field workers need to access critical applications. Enterprise-class data capabilities enable workers to capture virtually any type of data at the press of a button: 1D/2D bar codes in practically any condition, documents, signatures and NFC-based information. The best audio support in its class, with two front-facing speakers, two microphones, and noise canceling technology ensure crystal clear audio on both ends of a call.



### SPECIFICATIONS

- Processor: 1.5 GHz dual core processor
- Memory: 1 GB RAM/8 GB Flash
- Operating System: Android 4.1.2
- Monitor Type: LCD display, 4.3 in. WVGA, Corning Gorilla Glass 2; capacitive touch with stylus or fingertip input
- Data capture: 1D imager; 8MP camera (supports 2D codes); peer-to-peer NFC, card reader, card emulation
- Communications: Bluetooth 4.0 WPAN; 802.11a/b/g/n WLAN; 4G LTE HSPA+ WWAN; A-GPS
- Sealing/Drop: IP67/1.2m
- Form factor: All in one
- Warranty: 1-year factory warranty
- Services: all TC55s include 2 years' Service from the Start

## MOTOROLA SOLUTIONS MP6000 Scanner/Scale

### PRODUCT DESCRIPTION

POS lanes are the last touch point with a customer and can make or break the customer experience. Manufacturers are using GS1 DataBar™ and 2D bar codes to improve inventory management throughout the retail supply chain. With the Motorola Solutions MP6000 multi-plane bioptic imager, a POS is ready for any 1D and 2D bar code, whether it is printed on paper, a plastic loyalty card or displayed on the screen of a mobile phone.



### SPECIFICATIONS

- Dimensions: Long 507mm L x 292mm W x 102mm D x 128 mm H; Medium 399mm L x 292mm W x 102mm D x 128mm H; Short 353mm L x 102mm D x 128mm H
- User interface: Soft touch capacitive pads; wide, centrally located two-colour decode/information bar; beeper, adjustable volume and beep tones; 3 programmable buttons
- Imager: 1D/2D multiple CMOS array imager
- Ports: shared POS port for USB/RS-232/IBM RS-485; 3 USB peripheral ports; 2 powered RS-232 peripheral ports; Checkpoint interlock port; remote scale display port
- Options: customer side scanner, pole display, scale
- Warranty: 1-year factory warranty

## MOTOROLA SOLUTIONS DS4800

### PRODUCT DESCRIPTION

The DS4800 delivers high performance, chic design and Motorola dependability to the style-conscious point-of-sale environment, offering versatile 1D and 2D bar code reading in an ergonomic and customisable form-factor. The DS4800 supports barcodes on printed labels and displayed on mobile device screens and operates in both hand-held and hands-free modes. End users can specify finishes in their corporate colours featuring their logos.



### SPECIFICATIONS

- Reading Indicators: Specifications LED, vibration, customisable tones
- Resolution (minimum): 3 mil
- Light Source: Aiming 606nm LED; Illumination: 640nm LED
- Interfaces: USB
- Data capture: 1D and 2D bar codes
- Sealing/Drop: IP40/ Withstands multiple 5 ft. (1.5 m) drops to concrete
- Monitor Type: NA
- Form factor: All in one, optional hands-free stand
- Warranty: 5-year factory warranty



## Pioneering Shopping Experience with “Subito”

In supermarkets operated by Migros, Switzerland’s largest retailer, customers can independently scan products themselves, pack their goods and pay conveniently thanks to two Motorola-based systems: Subito Self-Scanning and Subito Self-Checkout. The integration partner responsible for installing the systems is OBRECHT Technologie AG.

### SUBITO SELF-SCANNING SYSTEM

To use the self-scanning solution, customers identify themselves with their Migros “Cumulus Card” at the scanner issuing point on arrival. Here the Motorola MC17 hand-held retail mobile computers are stored and charged. On their way through the supermarket the customer chooses products, scans their barcodes with the MC17 and places the items directly in their shopping bag. The scales print out a barcode for products that need to be weighed, such as fruit or vegetables. For articles with a unit price, such as lemons, there are barcodes on the shelves, which are then scanned. Customers use the scanner buttons to enter the number of articles and the plus and minus buttons to delete items they replace on the shelf.

In the exit area, the customer returns the scanner and pays in a cashless process at the pay station. The system removes the need to place goods on a checkout conveyor, resulting in significant time savings and freeing store personnel to carry out other duties.

### SUBITO SELF-CHECKOUT SYSTEM

Any customer can use the self-checkout system, even without a Cumulus card. They shop in the usual way, placing goods in their shopping cart. In the “self-checkout” area, green lamps indicate available stations where customers scan their purchases, interacting with a touchscreen. Payment is cashless with the usual payment and credit cards. Customers can scan discount coupons and shopping vouchers, the amounts immediately being credited and detailed on their receipts. Both systems also allow customers to earn and redeem loyalty points with their Cumulus cards.

In common with other retailers, Migros has experienced no increase in theft rates in branches with Subito systems, though they do conduct regular spot checks.

### MC17- THE NEW SHOPPING COMPANION

At the core of these self-scanning systems is Motorola’s MC17 hand-held computer. Its intuitive user interface with colour display and six keys makes operation easy, even for first-time users of any age. Ergonomic design makes it comfortable to use, it withstands 1.2m drops to tiled floors and a powerful integrated scanner enables easy bar code reading. Wi-Fi enables data communications with the host system over a wireless LAN.

With the Windows CE 5.0 Professional operating system, Pocket Internet Explorer 6.0 and Motorola Pocket Browser, programmers are able quickly and easily to develop, deploy and integrate custom applications. The web-based CE.NET server software supports standard development processes and seamless integration with today’s and tomorrow’s POS systems.

### ACCELERATING THE CHECKOUT PROCESS

According to Migros, customers have required very little guidance in adopting the systems and within a few weeks Subito utilisation has reached 15 to 20 percent. The self-scanning systems significantly accelerate the payment process and customers really appreciate this, particularly at peak times. Instead of resulting in staff reductions, the systems enable store employees to be deployed more efficiently, enhancing the quality of customer service on the sales floor.

It is essential to the success of a store that the staff can identify with the Subito systems. At Migros it has been very successful, and employees are happy to collaborate in designing the new sales scenario and in proactively approaching their customers. The result is not only increased customer satisfaction, but also a satisfied workforce.



## TC55 TOUCH COMPUTER

# BUSINESS WITH A PERSONAL TOUCH

To get the job done, your field workers need a rugged, reliable device to provide remote access to real-time data. They also need a device that is easy to use. Introducing the TC55, the pocket-sized, all-touch mobile computer that has it all. The TC55 Touch Computer marries rich enterprise features with smartphone usability and form factor. For example, workers can capture practically any type of data – from bar codes and signatures to photos, videos and NFC – improving on the job efficiency and customer service. The screen is optimized for Enterprise viewing, helping ensure the battery lasts a full shift. And with a drop, tumble and environmental sealing specification you can count on, it has the durability required to serve your field workers for years.



For more information on this and all other Motorola products, visit the Motorola Solutions website on [www.motorolasolutions.com](http://www.motorolasolutions.com)



MOTOROLA, MOTO, MOTOROLA SOLUTIONS and the stylised M Logo are trademarks or registered trademarks of Motorola Trademark Holdings, LLC and are used under license. The Bluetooth trademarks are the property of their operators and used under license by Motorola, Inc. All other trademarks are the property of their respective owners. © 2013 Motorola Solutions, Inc. All rights reserved.



[www.ingrammicro-dcpo.eu](http://www.ingrammicro-dcpo.eu)



## Work with the Specialists

Ingram Micro has built its Data Capture/Point-of-Sale network in EMEA by acquiring highly successful specialist distributors and providing these teams with the tools required to grow theirs and their reseller partners' businesses even more. The result is a presence of knowledgeable sales and support professionals in over 20 countries, backed by Ingram Micro's recognised logistical expertise. IM DC/POS is the fastest-growing specialist distributor in Europe.

Our reseller partners know that when they contact their local IM DC/POS office they will be dealing with people who really understand the technologies and their applications. Furthermore, our close working relationships with the leading vendors ensure that our customers receive the support they need to pitch for business and win deals. This is particularly valuable if you are new to the POS sector.

### MEET THE INGRAM MICRO POS TEAMS NEAR YOU!

Austria | +43 1 4081543-0 | [dcpos-at@ingrammicro.at](mailto:dcpos-at@ingrammicro.at)

Belgium | +32 2 2549211 | [dcpos@ingrammicro.be](mailto:dcpos@ingrammicro.be)

Czech Republic | +420 723 777797 | [jakub.valek@ingrammicro.co.il](mailto:jakub.valek@ingrammicro.co.il)

Denmark | +45 7023 0051 | [dc-pos@ingrammicro.dk](mailto:dc-pos@ingrammicro.dk)

Finland | +358 9 5027400 | [dcpos@ingrammicro.fi](mailto:dcpos@ingrammicro.fi)

France | +33 35901 8800 ext 7575 | [aidc-pos@ingrammicro.fr](mailto:aidc-pos@ingrammicro.fr)

Germany | +49 5407 8343-0 | [dcpos@ingrammicro.de](mailto:dcpos@ingrammicro.de)

Israel | +972 3 6498140 | [jc@ingrammicro.co.il](mailto:jc@ingrammicro.co.il)

Italy | +39 02 95181 | [sinead.gabriele@ingrammicro.it](mailto:sinead.gabriele@ingrammicro.it)

Netherlands | +31 30 246 4001 ext 4215 | [michael.van.tilborg@ingrammicro.nl](mailto:michael.van.tilborg@ingrammicro.nl)

Norway | +47 23 05 0000 | [bestilling@ingrammicro.no](mailto:bestilling@ingrammicro.no)

Poland | +48 664 730990 | [dd@ingrammicro.co.il](mailto:dd@ingrammicro.co.il)

Portugal | +351 213 976229 | [dcpos@ingrammicro.pt](mailto:dcpos@ingrammicro.pt)

Romania | +40 722 616585 | [ar@ingrammicro.co.il](mailto:ar@ingrammicro.co.il)

Russia | +7 985 764 7379 | [td@ingrammicro.co.il](mailto:td@ingrammicro.co.il)

Slovakia | +420 723 777797 | [jakub.valek@ingrammicro.co.il](mailto:jakub.valek@ingrammicro.co.il)

South Africa | +27 11 9288370 | [carolinejane.scofield@ingrammicro.com](mailto:carolinejane.scofield@ingrammicro.com)

Spain | +34 902 503533 | [dcpos@ingrammicro.es](mailto:dcpos@ingrammicro.es)

Sweden | +46 8 4771520 | [info-dcpos@ingrammicro.se](mailto:info-dcpos@ingrammicro.se)

Switzerland | +41 41 7843008 | [info@ingrammicro.ch](mailto:info@ingrammicro.ch)

Turkey | +90 212 2590064 | [aptecturkey@aptec.com.tr](mailto:aptecturkey@aptec.com.tr)

UK and Ireland | +44 1628 593699 | [dcpos@ingrammicro.co.uk](mailto:dcpos@ingrammicro.co.uk)







[www.ingrammicro-dcpos.eu](http://www.ingrammicro-dcpos.eu)



SEE MORE. DO MORE.

