

Ceiling mount bracket for low ceilings

Description

This ceiling mount bracket is used when mounting a PT-FW430 series or other Panasonic projector to low ceilings.

<b>Specifications</b>	Vertical correction angle:	+5°, -15°
	Horizontal slant correction angle:	±10°
	Horizontal turn correction angle:	±5°
	Dimensions (W × H × D):	313 × 93 × 222 mm (12-5/16" × 3-21/32" × 8-3/4")
	Weight:	Approx. 1.5 kg* (3.3 lbs*)

\* Average value. May differ depending on models.

<b>Parts</b>	Attachment plate . . . . .	1	Wire rope for projector mount bracket . . . . .	1
	Projector mount bracket . . . . .	1	Wire rope for projector unit . . . . .	1
	Washer-fitted bolts (M4 × 10) . . . . .	4		

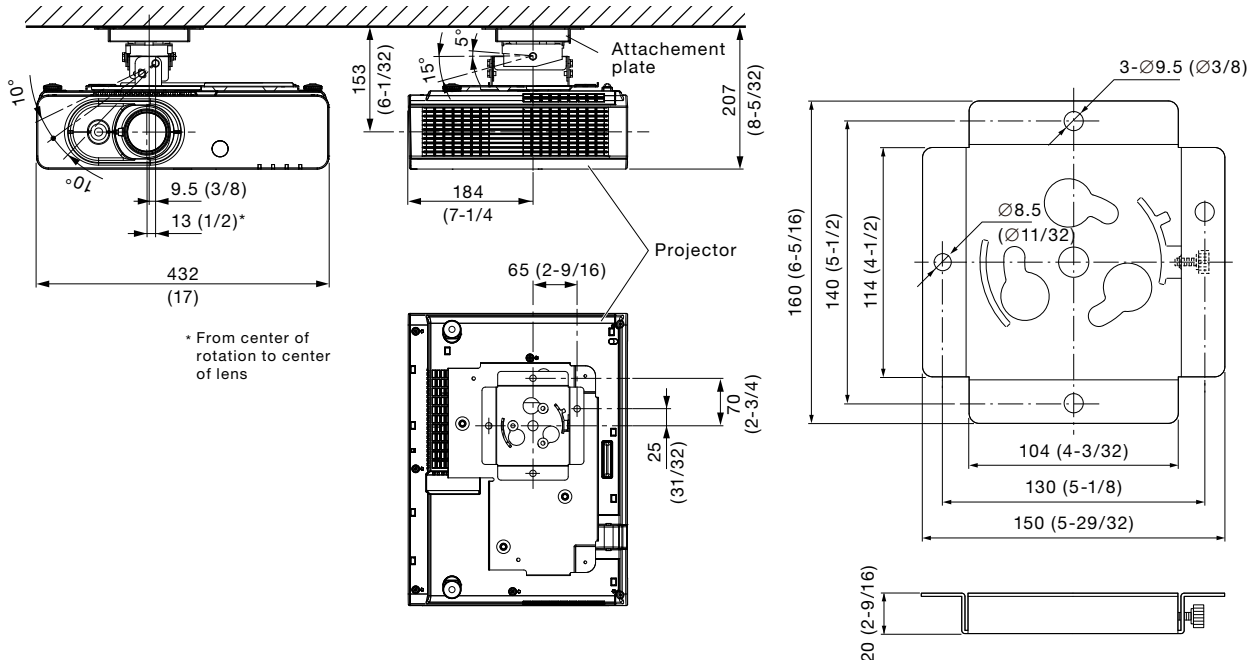
**Caution:**

- Mounting should be done by a qualified technician.
- Make sure that the mounting (ceiling) area has sufficient strength.
- Read the enclosed mounting instructions thoroughly before starting.
- Do not use an electric screwdriver or impact driver to tighten screws. Use a torque driver or hexagon torque wrench and tighten screws to the torque specified in the instructions.
- When the product is no longer going to be used, have it disposed of quickly by a professional disposal service.

Dimensions

Illustration shows the bracket attached to a projector.

Attachment plate



unit : mm (inch)  
NOTE: This illustration is not drawn to scale.

Weights and dimensions shown are approximate. Specifications subject to change without notice.