

Ceiling mount bracket for high ceilings

Description

This ceiling mount bracket is used when mounting a Panasonic's applicable projector to high ceilings.

NOTE: This ceiling mount bracket cannot be used by itself. Combine it with the optional bracket assembly.

Specifications

| | |
|------------------------------------|--|
| Vertical correction angle: | ±15° |
| Horizontal slant correction angle: | ±15° |
| Horizontal turn correction angle: | 360° |
| Dimensions (W × H × D): | 180 × 835–1,405 × 226 mm (7-3/32 × 32-7/8–55-5/16 × 8-29/32 inches) |
| Weight: | Approx. 4.1 kg* (9.0 lbs*) |
| Applicable bracket assembly: | ET-PKV200B/PKV100B/PKV101B/PKL300B/PKL100B/PKT100B/ PKC200B/PKC100B |

* Average value. May differ depending on products.

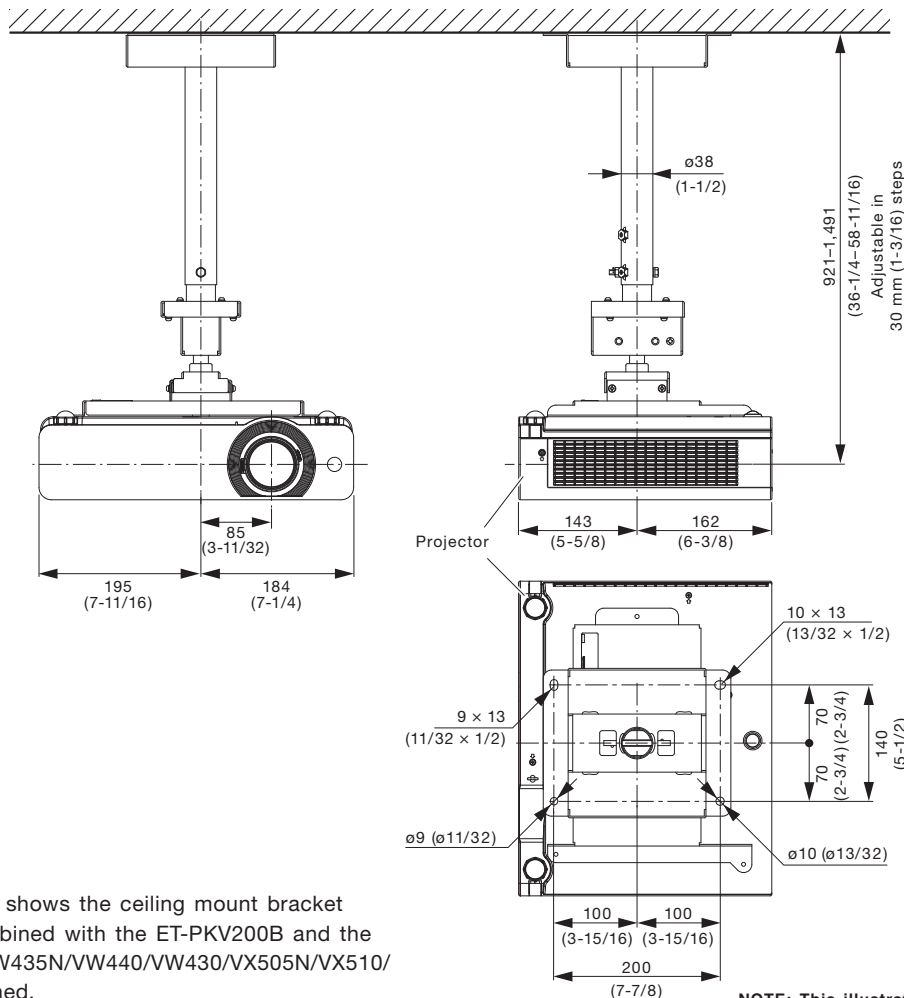
Parts

| | | | |
|---|---|------------------------------|---|
| Projector mount bracket A (pole included) | 1 | Hexagonal nut (M6) | 1 |
| Projector mount bracket B (pole included) | 1 | Snap pin | 1 |
| Pole joint bolt with collar. | 1 | Screws (M5 × 10) | 4 |
| Washer (M6) | 1 | Hexagonal wrench | 1 |

Caution:

- Mounting should be done by a qualified technician.
- Make sure that the mounting (ceiling) area has sufficient strength.
- Read the enclosed mounting instructions thoroughly before starting.
- Do not use an electric screwdriver or impact driver to tighten screws. Use a torque driver or hexagon torque wrench and tighten screws to the torque specified in the instructions.
- When the product is no longer going to be used, have it disposed of quickly by a professional disposal service.

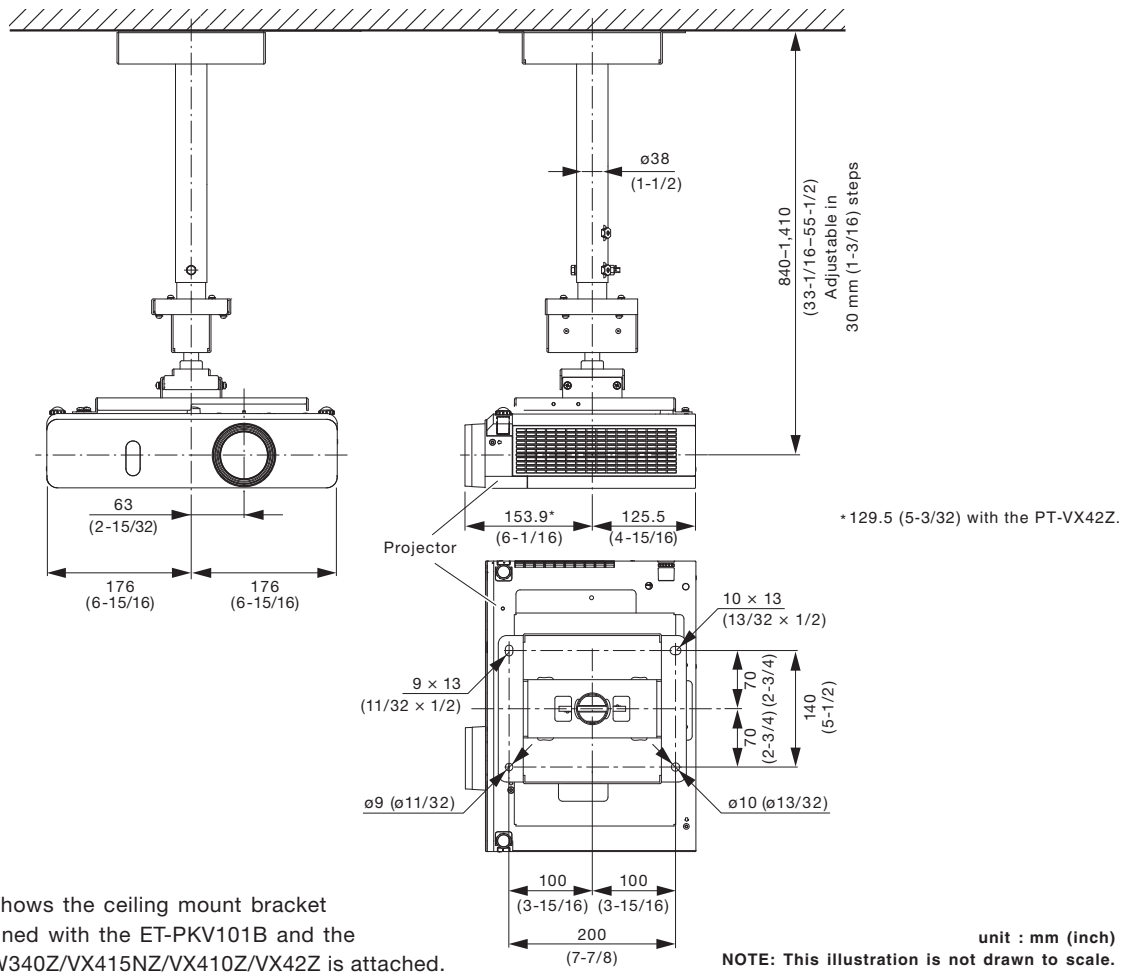
Dimensions



The illustration shows the ceiling mount bracket when it is combined with the ET-PKV200B and the PT-VW431D/VW435N/VW440/VW430/VX505N/VX510/VX500 is attached.

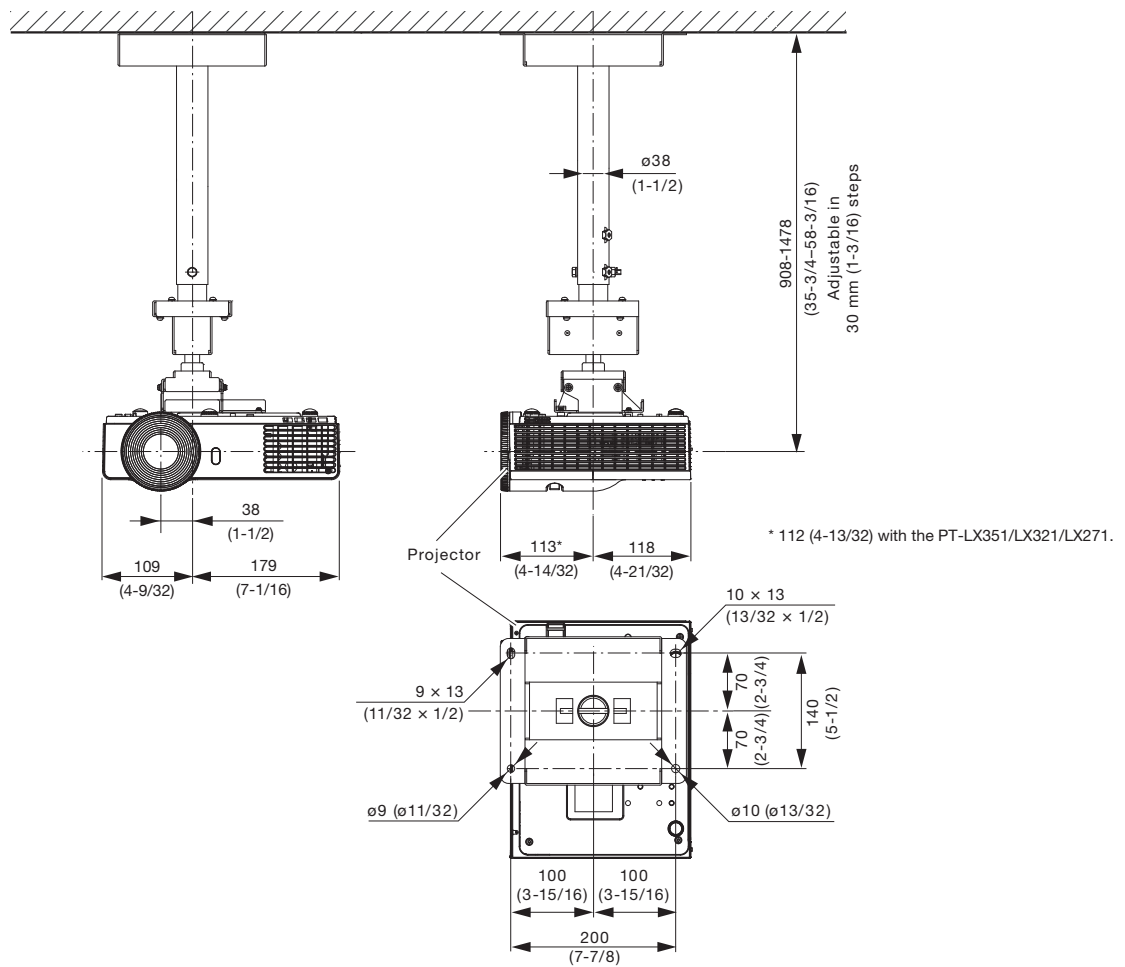
unit : mm (inch)
NOTE: This illustration is not drawn to scale.

Dimensions



The illustration shows the ceiling mount bracket when it is combined with the ET-PKV101B and the PT-VW345NZ/VW340Z/VX415NZ/VX410Z/VX42Z is attached.

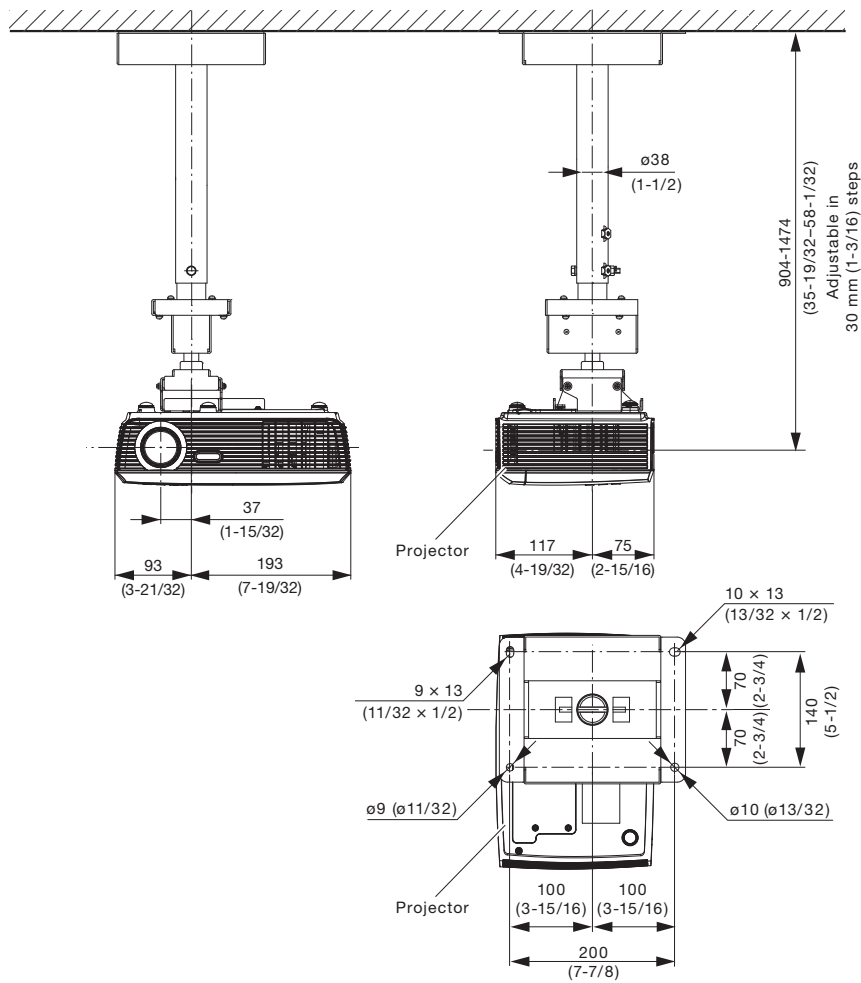
Dimensions



The illustration shows the ceiling mount bracket when it is combined with the ET-PKL300B and the PT-LW321/LW271/LX351/LX321/LX271 is attached.

unit : mm (inch)
NOTE: This illustration is not drawn to scale.

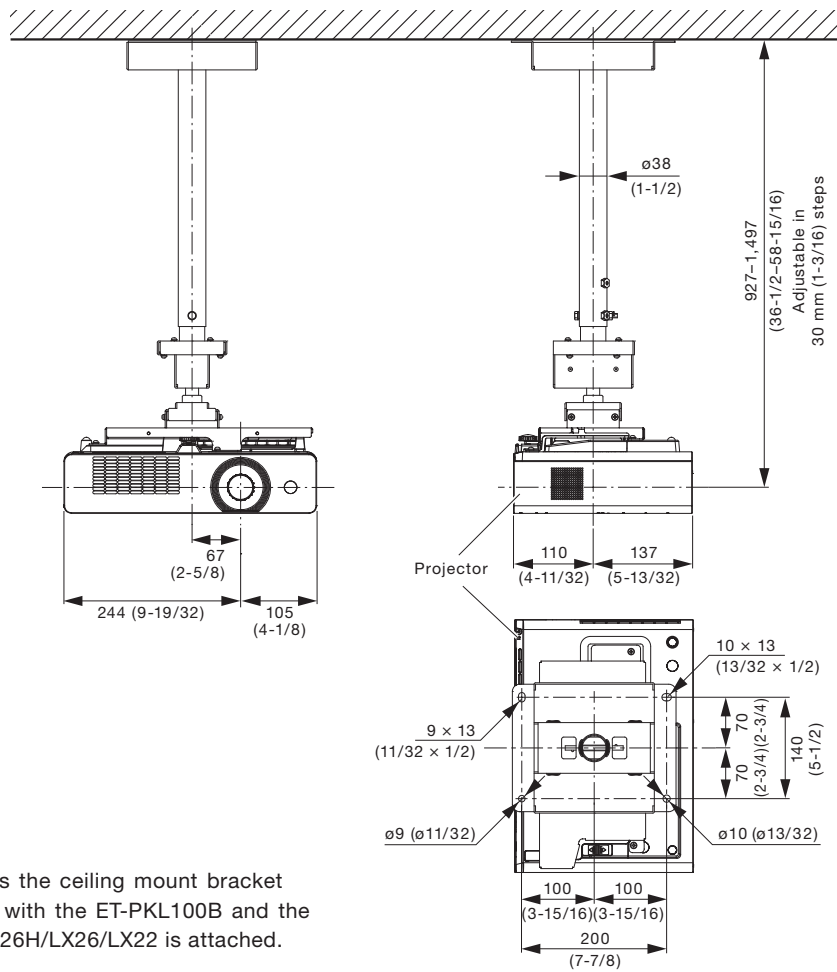
Dimensions



The illustration shows the ceiling mount bracket when it is combined with the ET-PKL300B and the PT-LX300/LX270 is attached.

unit : mm (inch)
NOTE: This illustration is not drawn to scale.

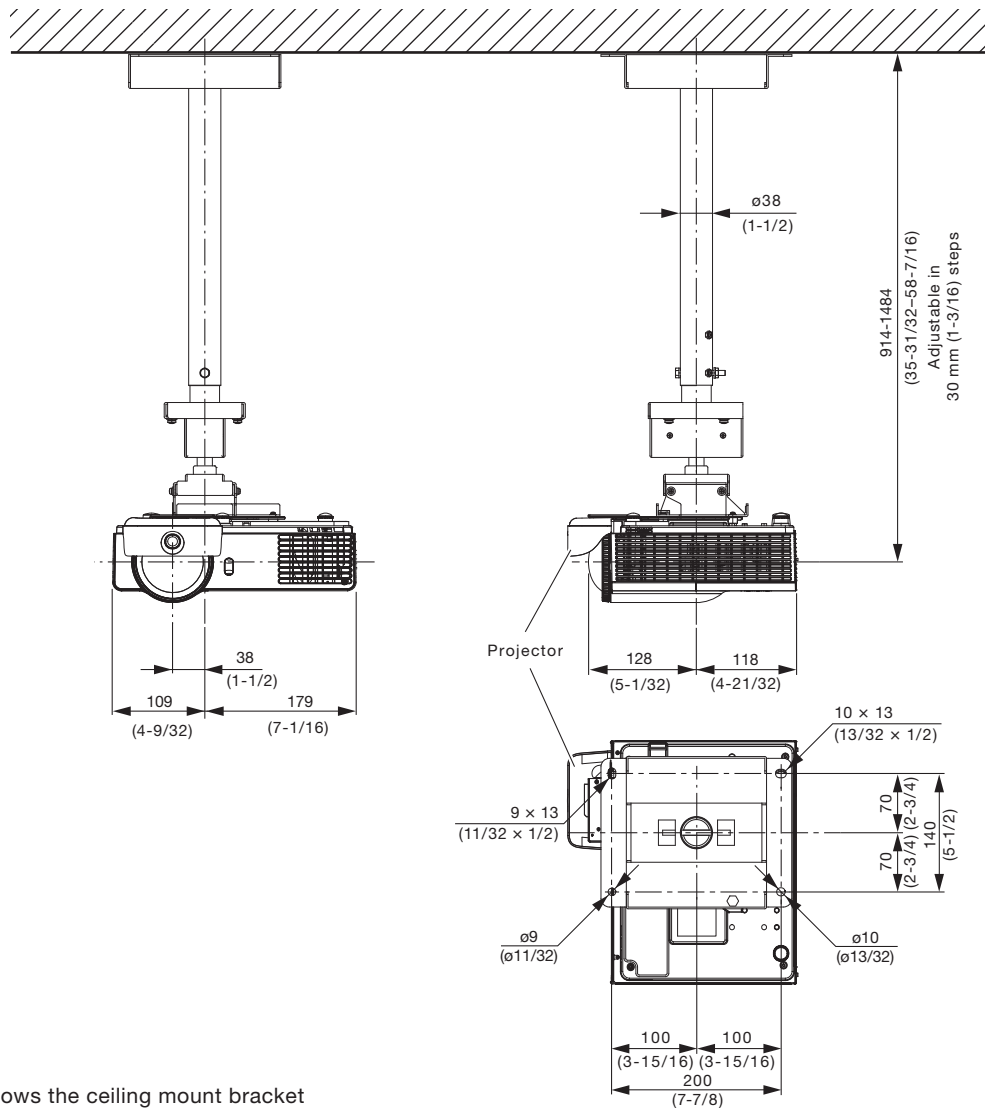
Dimensions



The illustration shows the ceiling mount bracket when it is combined with the ET-PKL100B and the PT-LW25H/LX30H/LX26H/LX26/LX22 is attached.

unit : mm (inch)
NOTE: This illustration is not drawn to scale.

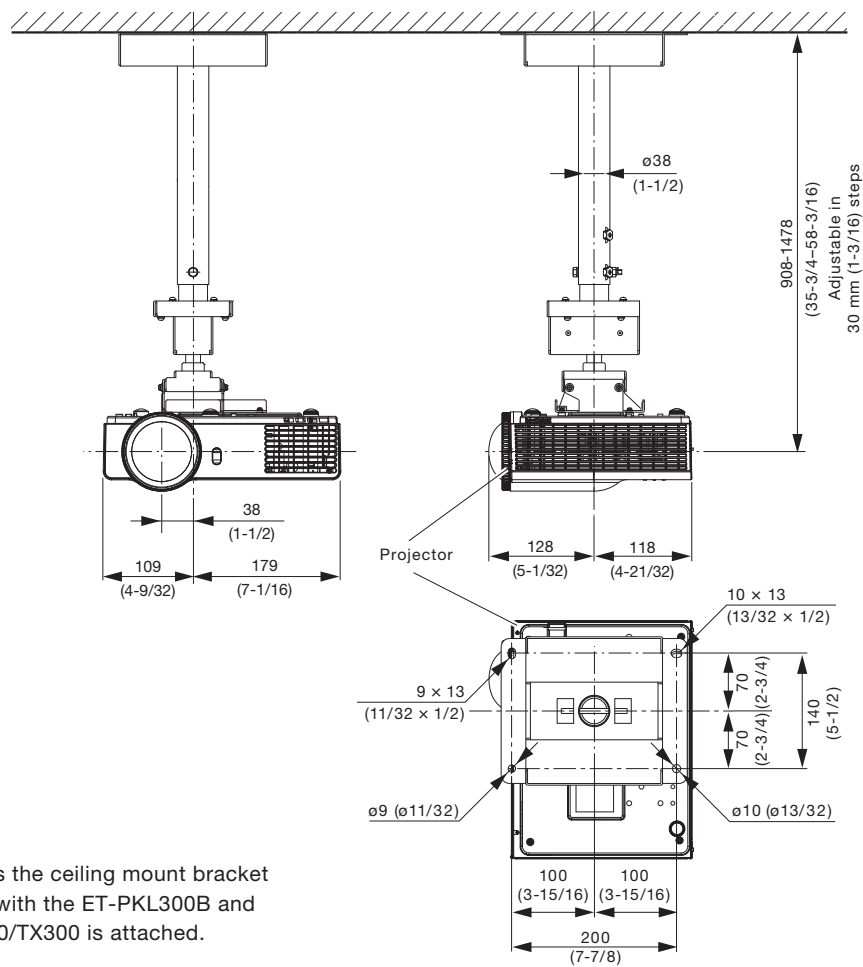
Dimensions



The illustration shows the ceiling mount bracket when it is combined with the ET-PKL300B and the PT-TW331R/TX301R is attached.

unit : mm (inch)
NOTE: This illustration is not drawn to scale.

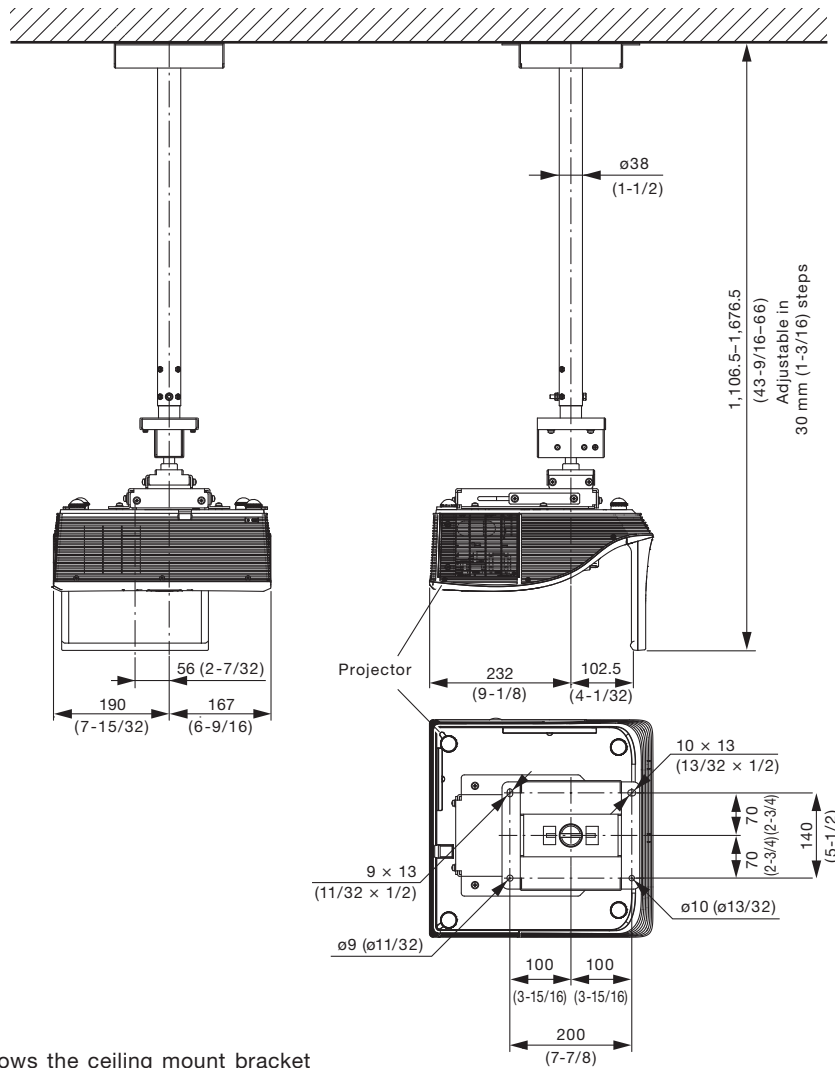
Dimensions



The illustration shows the ceiling mount bracket when it is combined with the ET-PKL300B and the PT-TW330/TW240/TX300 is attached.

unit : mm (inch)
NOTE: This illustration is not drawn to scale.

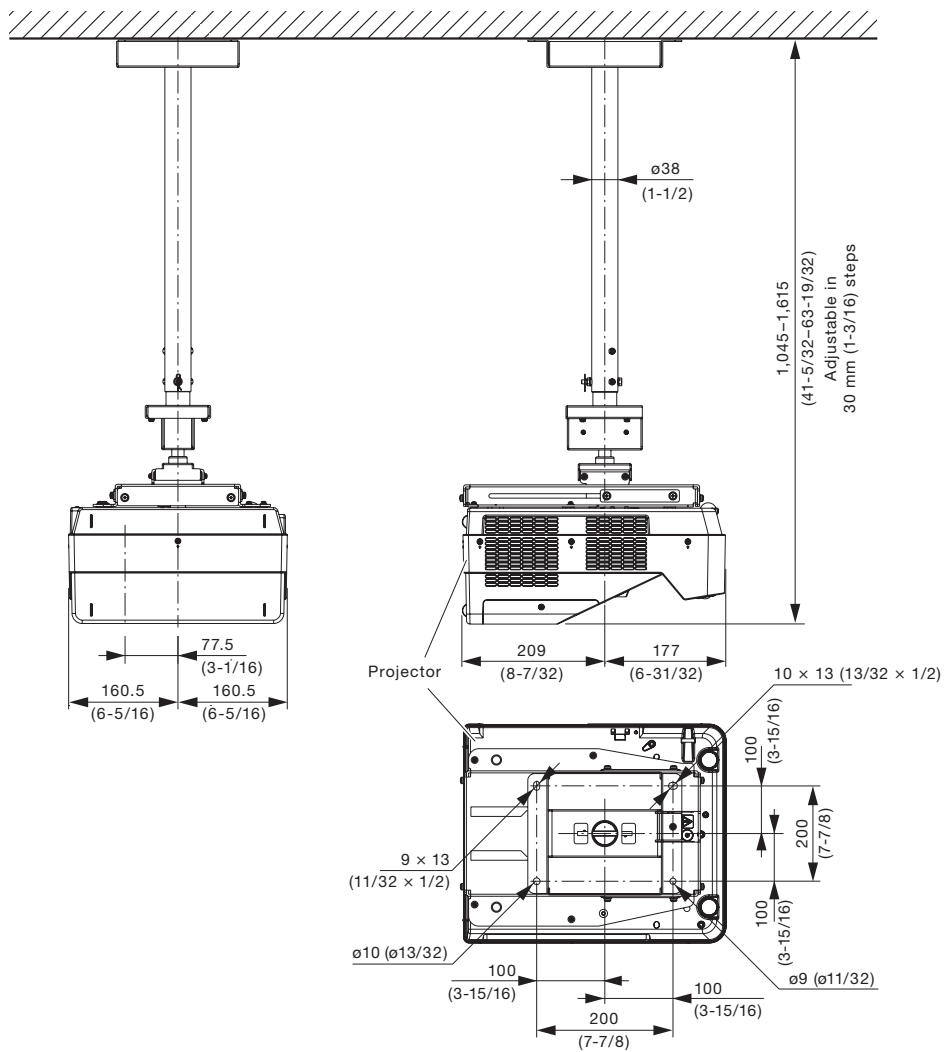
Dimensions



The illustration shows the ceiling mount bracket when it is combined with the ET-PKC200B and the PT-CW331R/CW330/CW241R/CW240/CX301R/CX300

unit : mm (inch)
NOTE: This illustration is not drawn to scale.

Dimensions



The illustration shows the ceiling mount bracket when it is combined with the ET-PKC100B and the PT-CW230/CX200 is attached.

unit : mm (inch)
NOTE: This illustration is not drawn to scale.

Weights and dimensions shown are approximate.
Specifications and appearance are subject to change without notice.