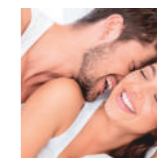


Prisma*Natural*

Well-Being & Health Specialists





URACTIV
LINE

7



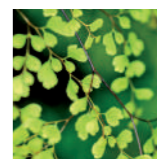
DERMACTIV
LINE

13



PREMIUM
LINE

23



FOOD
SUPPLEMENTS

31



COSMETICS
COSMETICS BASED
ON NATURAL
INGREDIENTS

105



PLV

155

ABOUT US

GRUPO NUEVA DIETÉTICA Grupo Nueva Dietética is an Andalusian company with a strong implementation in both national and international markets and presence in more than 40 countries. It started in the sector thirty years ago with the manufacturing, marketing, distribution and export of Food SUPPLEMENTS, Nutrition, Dietetics, Functional Food and Cosmetics based on natural ingredients.

Our work focuses on research, innovation, development and manufacturing of new formulas that allow us to meet the needs of a growing and increasingly demanding market at the global level.

Our facilities, placed in Alcalá de Guadaíra, a city located in Seville, take up more than 4,500m² and have the latest technology and equipment that allows us to offer our customers the maximum quality standards in production, complying with the most demanding manufacturing certifications, like the GMP (Good Manufacturing Practices), Quality Management ISO 9001, Food Safety ISO 22000, Cosmetics Good Manufacturing Practices ISO 22716 and Environmental Management ISO 14001.

The multidisciplinary skills of our human team, with more than 100 experienced professionals accredited in the sector, allows us to offer our customers the excellence in manufacturing and marketing, in accordance with our integrated policy of OVERALL QUALITY.

GRUPO NUEVA DIETÉTICA has been awarded with the SME OF THE YEAR 2017 by the Chamber of Commerce and has received one of the most prestigious national prizes Ecofin, being awarded in the Research, Development and Innovation (R+D+I) category

OUR VALUES

OVERALL QUALITY. At each stage of all our projects.

R+D+I. Absolute commitment to research, development and innovation besides the values regarding raw materials with clinical studies, active principles and natural components for its use through healthy solutions.

TRUST. In order to satisfy each of our customers.

SERVICE. Fast, efficient and customised service, with personal advice and constant training.



CERTIFICADORA ACREDITADA POR ENAC r6



OUR PRODUCTS

With a deep knowledge of the Food SUPPLEMENTS, Nutrition, Dietetics, Food and Natural Cosmetics, GRUPO NUEVA DIETÉTICA has different lines of products, with more than 300 references.

FOOD SUPPLEMENTS: we obtain safe, effective and easy to dose solutions using high concentrations of active substances. Together with the constant improvement of textures and flavours by the R+D+I department, both make our food SUPPLEMENTS leading-edge products.

URACTIV LINE: food SUPPLEMENTS specially created for men.

DERMACTIV LINE: dermocosmetic and nutricosmetic for the most demanding dermatological treatments.

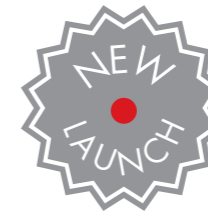
PREMIUM LINE: food SUPPLEMENTS specially designed for people who suffer from a Central Sensitivity Syndrome, suitable for people who has food sensitivities.

FUNCTIONAL FOOD: in the near future, daily food will be our best ally to prevent health risks, such as overweight, cholesterol or blood pressure. Functional nutrition gives us a better quality of life while covering our basic needs.

COSMETICS BASED ON NATURAL INGREDIENTS: with the highest concentration of ingredients from nature and natural actives endorses with studies, we develop high-safety, effective and superior sensorial formulas.



THE LINE OF FOOD SUPPLEMENTS
SPECIALLY CREATED FOR MEN



ERYPLUS

30 stick bottles 8.70ml

L-CITRULLINE-DL-MALATE,
L-ARGININE ALPHA KETOGLUTARATE,
MUIRA PUAMA,
MACA,
SOYA BEAN,
GINSENG,
ASHWAGANDHA,
NIACIN, PANTOTHENIC ACID,
RIBOFLAVIN, VITAMIN B6, THIAMINE,
FOLIC ACID AND VITAMIN B12.

1 stick bottle per day

EAN 13 CODE	8436582880242
INTERNAL CODE	10301
NATIONAL CODE	198818.8



SPERMFORTE

60 capsules 780mg

CORDYCEPS, GRAPE, RICE FLOUR, MACA, GUARANA SEED, VITAMIN C, ZINC, L-CARNITINE TARTRATE, VITAMIN E, GARDEN ANGELICA, CLOVE, VITAMIN B6, VITAMIN A FOLIC ACID, POTASSIUM IODIDE, SODIUM SELENITE, AND VITAMIN B12.

Gelatin capsule.

2 capsules per day

EAN 13 CODE 8436582881522
INTERNAL CODE 10305
NATIONAL CODE in process

MAXCONTROL

30 capsules 725mg

SIBERIAN GINSENG, L-TRYPTOPHAN, NETTLE, SOYA BEAN LECITHIN, ROSE ROOT AND SAFFRON.

Gelatin capsule.

1 capsule per day

EAN 13 CODE 8436582880259
INTERNAL CODE 10302
NATIONAL CODE 198821.8

MAXCONTROL spray

20ml

GLICERIN, MENTHYL LACTATE, CLOVE AND EUGENOL.

EAN 13 CODE 8436582881720
INTERNAL CODE 10304
NATIONAL CODE in process



HIPERPROST

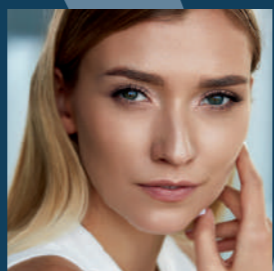
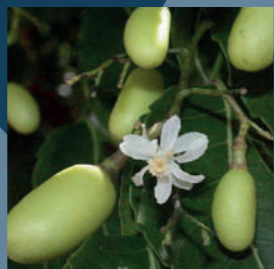
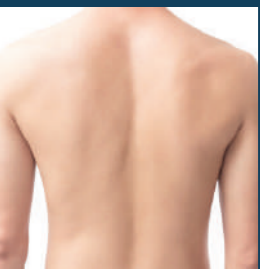
60 capsules 618mg

MACA, PYGEUM, GINGER, SAW PALMETTO, ROSEMARY, ZINC CITRATE AND TURMERIC.
Vegetable capsule.



1 capsule per day

EAN 13 CODE 8436582880266
INTERNAL CODE 10303
NATIONAL CODE 198819.5



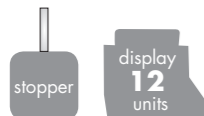
DERMOCOSMETIC AND
NUTRICOSMETIC
FOR THE MOST DEMANDING
DERMATOLOGICAL TREATMENTS



HEALTHY HAIR

20 capsules 693mg
 EPILOBIUM,
 MILLET,
 AFRICAN PLUM TREE,
 POLYGONUM,
 L-METHIONINE,
 ZINC GLUCONATE,
 L-CYSTEINE, L-CYSTINE,
 BIOTIN, NIACIN (VITAMIN B3),
 PRYDOXINE (VITAMIN B6),
 AND PANTOTHENIC ACID (VITAMIN B5).
 Gelatin capsule.

1 capsule per day



EAN 13 CODE 8437018023554
 INTERNAL CODE 200929
 NATIONAL CODE 192287.8

INMUNOSUN

30 capsules 668.5mg
 REISHI,
 GOLDEN SUN,
 LUTEIN,
 LUTEOLINA,
 GLUTATION,
 CAT'S CLAW,
 POLYPODIUM,
 TOMATO EXTRACT,
 POMEGRANATE EXTRACT,
 AND VITAMINS C, D AND E.
 Gelatin capsule.

1 - 2 capsules per day



EAN 13 CODE 8436582880198
 INTERNAL CODE 201314
 NATIONAL CODE 194198.5



SKINSEB CONTROL

60 capsules 764mg

DUNALIELLA ALGAE,
 BURDOCK,
 SAW PALMETTO,
 ZINC,
 GOLDEN SUN,
 CENTELLA ASIATICA,
 MILK THISTLE,
 CHROMIUM,
 SELENIUM,
 AND VITAMINS.
 Gelatin capsule.

1 capsule per day



EAN 13 CODE 8436582880693
 INTERNAL CODE 207122
 NATIONAL CODE 197599.7



SKINSEB CONTROL

airless 100ml

NEEM OIL,
ECOLOGICAL ALOE VERA,
TEA TREE OIL,
HYALURONIC ACID,
MORINGA OIL,
MANGO AND PAPAYA EXTRACT,
AND VITAMIN E



PSORA CONTROL

airless 100ml

NEEM OIL,
ANDIROBA OIL,
ECOLOGICAL ALOE VERA,
TEA TREE OIL,
HYALURONIC ACID,
PAPAYA EXTRACT,
AND VITAMIN E



KAYMA CARE

airless 100ml

NEEM OIL,
HORSE CHESTNUT EXTRACT,
ECOLOGICAL ALOE VERA,
TEA TREE OIL,
HYALURONIC ACID,
PAPAYA EXTRACT,
ANDIROBA OIL,
AND VITAMIN E.



DERMATOLOGICALLY TESTED



EAN 13 CODE 8436582880839
INTERNAL CODE 01000101
NATIONAL CODE 197598.0



DERMATOLOGICALLY TESTED



EAN 13 CODE 8436582880846
INTERNAL CODE 01000102
NATIONAL CODE 197597.3



DERMATOLOGICALLY TESTED

EAN 13 CODE 8436582880853
INTERNAL CODE 01000103
NATIONAL CODE 197596.6



X¹⁰ LASH™

*100% natural patented active ingredient that increases the growth and length of your eyelashes



EYEBROWS & EYELASHES SERUM TREATMENT

tube with brush applicator 5ml
 WITHIN TWO MONTHS, IT INCREASES:
 THE LENGTH UP TO 45%
 THE THICKNESS UP TO 13.7%

X10 LASH™
 100% natural active, substance extracted from millet
 PROCAPIL®
 PANTHENOL
 HYALURONIC ACID



adhesive vinyl for shop window

display 12 units



DERMATOLOGICALLY TESTED

EAN 13 CODE 8437018023509
 INTERNAL CODE 100417
 NATIONAL CODE 191198.8



GEL CLEANING

dispenser 250ml
 FACIAL CLEANSING GEL WITHOUT SOAP, WITH NATURAL AND VEGETAL ACTIVE INGREDIENTS, PORE REFINERS AND MATTIFIER.

OLIVE FRUIT WATER,
 AFFIPORE
 OLEASAN®
 ALOE VERA



medium/oily skin

EAN 13 CODE 8436582880815
 INTERNAL CODE 1000104



HEALTHY HAIR SHAMPOO

bottle 250ml

TRIPLE EFFECT TREATMENT SHAMPOO:
REVITALISING, REGENERATING AND
SEBUM REGULATING

GLYCERIN,
NETTLE,
ZINC PYRITHIONE (ZNPT), ICHTHAMMOL,
HAMAMELIS,
SABAL (SERENOA SERULATA),
BIOTIN, MENTHOL Y TEA TREE.



use daily
or alternate days



stopper

DERMATOLOGICALLY
TESTED

EAN 13 CODE
INTERNAL CODE
NATIONAL CODE

8437018023547
123122
191199.5

HEALTHY HAIR LOTION

spray 100ml

TRIPLE EFFECT TREATMENT LOTION:
REVITALISING, REGENERATING AND
SEBUM REGULATING

BAICAPILTM,
POLIPLANT CAPILAR,
ECO MINT EXTRACT,
VITASOL (Vitamins A, B1, B2, B3, B5, B6, B7,
B8, B12, C, E, F and P),
CHRYSA LIS EXTRACT.



best results using at night



stopper



DERMATOLOGICALLY
TESTED

EAN 13 CODE
INTERNAL CODE
NATIONAL CODE

8437018023561
105032
194078.0



HAIR TREATMENT CAPILAR DERMACTIV



CENTRAL SENSITIZATION SYNDROME / FOOD SENSITIVITY



FOOD SUPPLEMENTS
SUITABLE FOR PEOPLE
WITH FOOD SENSITIVITY
AND ALLERGIES



PEA PREMIUM

60 capsules 496mg

PEA (PALMITOYLETHANOLAMIDE))
Vegetable capsule.

1-3 capsules per day



EAN 13 CODE
INTERNAL CODE
NATIONAL CODE

8437018023417
200942
191001.1

MELATONIN +VITAMIN B6

spray 50ml

MELATONIN
AND VITAMIN B6.

1 sublingual spraying



EAN 13 CODE
INTERNAL CODE
NATIONAL CODE

8437018023424
215004
192285.4



FIBRO SSC

60 sachets 3.656mg

MALIC ACID,
ACETYL L-CARNITINE,
PEA, NADH,
COENZYME Q10,
SELENIUM,
AND MAGNESIUM.

2 sachets per day



EAN 13 CODE
INTERNAL CODE
NATIONAL CODE

8436582880709
207127
197790.8



GLUTAMINE +PROBIOTICS

30 sticks 4.374g

L-GLUTAMINE, LACTOBACILLUS ACIDOPHILUS, INULIN, LACTOBACILLUS PLANTRUM, LACTOCOCCUS LACTIS AND BIFIDOBACTERIUM LACTIS.

1 stick per day



EAN 13 CODE 8437010199837
INTERNAL CODE 203104
NATIONAL CODE 187144.2

MAGNESIUM

60 capsules 636.81mg

MAGNESIUM CITRATE.
Vegetable capsule.

1-2 capsules per day



EAN 13 CODE 8437010199820
INTERNAL CODE 200715
NATIONAL CODE 187141.1

QUERCETIN +LUTEOLIN

60 capsules 429.8mg

QUERCETIN, AND LUTEOLIN.
Vegetable capsule.

1-3 capsules per day



EAN 13 CODE 8437010199950
INTERNAL CODE 200717
NATIONAL CODE 189314.7



ACETYL L-CARNITINE +PQQ + COENZYME Q10

60 capsules 731.5mg

ACETYL L-CARNITINE, COENZYME Q10, BAMBOO, PQQ, AND SELENIUM.
Vegetable capsule.

1 capsule per day



EAN 13 CODE 8436582880310
INTERNAL CODE 207117
NATIONAL CODE 196529.5



UBIQUINOL

60 pearls 643.3mg

UBIQUINOL MIXTURE.
Gelatin PEARL.

1 pearl per day

EAN 13 CODE 8437010199967
INTERNAL CODE 207108
NATIONAL CODE 187496.2



GLUTAMINE + D-RIBOSE + MSM

15 double sachet 8g

L-GLUTAMINE,
MSM
(METHYL SULFONYL METHANE)
AND D-RIBOSE.



1 double sachet per day



EAN 13 CODE 8436582880204
INTERNAL CODE 207114
NATIONAL CODE 194199.2



L-CARNOSINA + AC. MÁLICO

solution 500ml

MALIC ACID
AND L-CARNOSINE.

20ml per day. (10ml x 2)



EAN 13 CODE 8437010199813
INTERNAL CODE 200716
NATIONAL CODE 187495.5



GINESITOL

30 sachets 4.2g

INOSITOL,
MINERALS,
AND VITAMINS.



1 sachet per day

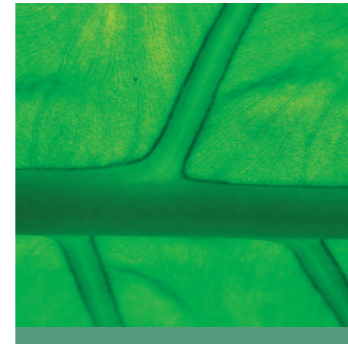
EAN 13 CODE 8436582881072
INTERNAL CODE 207133
NATIONAL CODE 198249.0



33
WEIGHT CONTROL



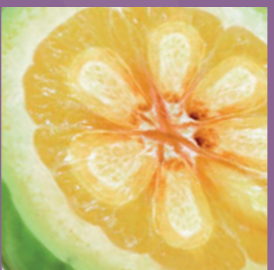
51
SUPPLEMENTS



69
PHYTOTHERAPY



FOOD SUPPLEMENTS





SUGARLOCK®
reduces up to
86% kcal*

(* In INVITRO Study, it has been checked that, by taking 2 g of Sugarlock before consuming 100 g of rice, it burns more than 86% of the carbohydrate intake. Clinical trial conducted in Chung Shan Medical University and certified by the Institutional Review Board (IRB) of Chung Shan Medical University Hospital.



SUGAR SLIM

SUGARLOCK® (PEANUT SKIN).
Gelatin capsule.

60 capsules 548mg

2-4 capsules per day

EAN 13 CODE	8437010199103
INTERNAL CODE	200711
NATIONAL CODE	184522.1



display
6
units



KETOBHB+

60 capsules 748mg

CALCIUM β-HYDROXYBUTYRATE,
MTC (MEDIUM CHAIN TRIGLYCERIDE)
(CONTAIN LACTOSE),
SODIUM β- HYDROXYBUTYRATE,
MAGNESIUM β- HYDROXYBUTYRATE,
Vegetable capsule.

2 capsules per day



EAN 13 CODE	8436582880228
INTERNAL CODE	208096
NATIONAL CODE	194202.9



ADIPO-BLOCK

60 capsules 546mg / 140 capsules 546mg

AFRICAN MANGO.

Gelatin capsule.

		60 capsules	140 capsules
4 capsules per day	EAN 13 CODE	8436048043150	8436048043570
	INTERNAL CODE	200648	200649
	NATIONAL CODE	162516.8	163672.0

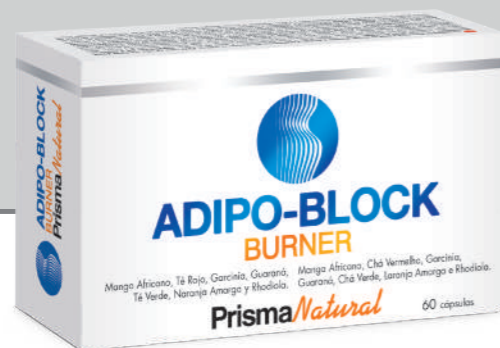


ADIPO-BLOCK DEPUR

solution 250ml / 500ml

BLUEBERRY, CURRANT, AFRICAN MANGO, VITAMIN C, BIRCH, VITAMIN E, ROSE HIP, SABAL, OPUNTIA, MACA, SARSAPARRILLA, MARSH HORSETAIL, GOLDENROD, ARTICHOKE, MILK THISTLE, NETTLE, ORTHOSIPHON, TURMERIC, STEVIA, VITAMIN B6, PARSLEY AND VITAMINS B1 AND B2.

		250ml	500ml
30ml per day	EAN 13 CODE	8436048043709	8436048044041
	INTERNAL CODE	210022	210027
	NATIONAL CODE	167157.8	



ADIPO-BLOCK BURNER

60 capsules 596mg

AFRICAN MANGO,
RED TEA, GARCINIA, GUARANA,
GREEN TEA,
BITTER ORANGE,
AND RHODIOLA.

Gelatin capsule.

2 capsules per day

EAN 13 CODE 8436048043914
INTERNAL CODE 200653
NATIONAL CODE 165908.8



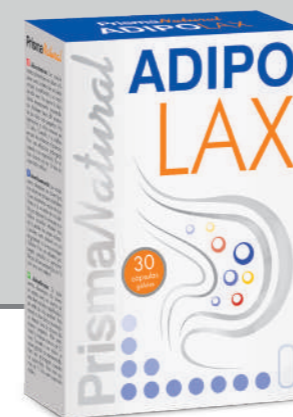
ADIPO COL ON CLEAN

15 sachets 7g

PLANTGO,
INULIN,
FENNEL, MALLOW,
GARCINIA, AÇAÍ,
RHUBARD, DIGEZYME®
(PROTEASE, LIPASE, CELLULASE
AND LACTASE),
AND ALOE.

1 sachet per day

EAN 13 CODE 8436048043921
INTERNAL CODE 200654
NATIONAL CODE 167156.1



ADIPO LAX

30 capsules 546mg

RHUBARD,
LICORICE,
ROSE,
MARSHMALLOW
AND ARTICHOKE

Gelatin capsule.

2 capsules per day

EAN 13 CODE 8436048045512
INTERNAL CODE 200336
NATIONAL CODE 165303.1



ADIPOBLOCK DETOX CHOCOLATE SUBLIME

bottle 300g

CONCENTRATED MILK PROTEIN,
CHOCOLATE AROMA,
FAT-REDUCED COCOA,
HYDROLYSED COLLAGEN PROTEIN,
CHOLINE BITARTRATE,
GREEN COFFEE,
ARTICHOKE, CHERRY STALK
AND MEADOWSWEET.

25-50 grams per day (1-2 shakes per day)

NUTRITIONAL VALUE PER 1 dose (25g)

KJ	Kcal	Fats	Saturated	Carbohydrate	Sugar	D. fiber	Proteins	Salt
264.9	63.3	1.8g	0.13g	2.9g	2g	0.07g	15.1g	0.5g

EAN 13 CODE 8436048048568
INTERNAL CODE 216003
NATIONAL CODE 176047.0





GREEN COFFEE

60 capsules 546mg
GREEN COFFEE.
Gelatin capsule.

2-3 capsules per day

12 units

EAN 13 CODE 8436048044539
INTERNAL CODE 200662
NATIONAL CODE 171998.0

GREEN COFFEE

solution 500ml
FRUCTOSE, RASPBERRY,
GREEN COFFEE,
AFRICAN MANGO,
ONION,
ORTHOSIPHON
AND CHROMIUM.

60ml per day (20ml x 3)

EAN 13 CODE 8436048047486
INTERNAL CODE 210033



RASPBERRY KETONE

140 / 60 capsules 546mg
RASPBERRY,
POLYGONUM,
AFRICAN MANGO,
KELP SEAWEED,
COFFEE, AÇAÍ,
VAPPLE VINEGAR,
GREEN TEA AND VINE.
Gelatin capsule.

2 capsules per day

9 units
140 caps.

EAN 13 CODE 8436048044072
INTERNAL CODE 200657
NATIONAL CODE

12 units
60 caps.

8436048044034
200656
168198.0

RASPBERRY KETONE

solution 500ml
FRUCTOSE,
RASPBERRY,
GREEN COFFEE,
AFRICAN MANGO,
ONION,
ORTHOSIPHON
AND CHROMIUM.

60ml per day (20ml x 3)

EAN 13 CODE 8436048044218
INTERNAL CODE 210029





GARCINIA CAMBOGIA (1200mg)

60 tablets 1,500mg

GARCINIA AND CALCIUM CARBONATE.

2 tablets per day



EAN 13 CODE 8436048049220
INTERNAL CODE 201367
NATIONAL CODE 182358.8

GARCINIA CAMBOGIA (800mg)

60 capsules 933mg

GARCINIA CAMBOGIA.
Gelatin capsule.

1-3 capsules per day



EAN 13 CODE 8436048047776
INTERNAL CODE 200517
NATIONAL CODE 182358.8

SAFFRON

30 capsules 768mg

SAFFRON,
GARCINIA,
AND COFFEE.

Gelatin capsule.

1 capsule per day



EAN 13 CODE 8436048048117
INTERNAL CODE 207139
NATIONAL CODE 181063.2

ABSORBE-GRAS

60 capsules 422.4mg

FIBER OF COCOA BEANS,
FIBER OF ORANGE PULP,
AND FIBER OF CHICOR.

Gelatin capsule.

2 capsules per day



EAN 13 CODE 8436048042023
INTERNAL CODE 2006556

CHITOSÁN

100 capsules 496mg

CHITOSAN,
VITAMIN C,
COCOA FIBER,
AND INULIN.

Gelatin capsule.

2-4 capsules per day



EAN 13 CODE 8436048040753
INTERNAL CODE 200506





DETOX

60 capsules 495mg

CHLORELLA
L-METHIONINE,
MILK THISTLE,
BLACK RADDISH,
ARTICHOKE,
DESMODIUM
AND L-GLUTATHIONE.
Vegetable capsule.

2-4 capsules per day



VEGAN

12
units

EAN 13 CODE 8436048047431
INTERNAL CODE 200710
NATIONAL CODE 184521.4

ALCACHOFA COMPLEX

30 capsules 556mg

ARTICHOKE,
MINT,
BOLDO
AND FUMARIA.
Gelatin capsule.

2 capsule per day

EAN 13 CODE 8436582880303
INTERNAL CODE 207118

DREN SLIM

14 sticks powder 3g

BLACK TEA,
CHERRY,
MEADOWSWEET,
GREEN TEA,
HIBISCUS, DANDELION
AND ELDERBERRY.

2 sticks per day

EAN 13 CODE 8436582880208
INTERNAL CODE 207116
NATIONAL CODE 154003.4

CELUT

14 sticks powder 3g

PINEAPPLE,
PAPAYA,
MATE LEAF,
RED GRAPEVINE,
GUARANA,
AND APPLE VINEGAR.

2 sticks per day

EAN 13 CODE 8437008988238
INTERNAL CODE 203035
NATIONAL CODE 154004.1





PROTEIN SNACK CHOCO - HAZELNUT - CINNAMON

30 x 35g
CREATINE + L-GLUTAMINE

MILK CHOCOLATE COVERING [SUGAR, COCOA BUTTER, SKIMMED MILK POWDER, COCOA PASTE, WHEY, ANHYDROUS BUTTER, SOY LECITHIN (EMULSIFIER), AROMA (NATURAL VANILLA ROMA), INSTANT CALCIUM CASEINATE, ULTRA-FILTERED MILK WHEY PROTEIN, FRUCTOSE, WHEAT FLOUR, HAZELNUT, NON-HYDROGENATED VEGETABLE FAT, CREATINE, SUGAR, L-GLUTAMINE, COCOA PASTE, COCOA BUTTER, EMULSIFIERS (SOY LECITHIN AND POLYGLYCEROL POLYRICINOLEATE), THICKENER (GUAR GUM), GASIFIERS (AMMONIUM BICARBONATE AND SODIUM BICARBONATE), CINNAMON AROMA, VITAMIN COMPLEX (VITAMIN C, NIACIN, VITAMIN E, PANTOTHENIC ACID, VITAMIN B2, VITAMIN B6, VITAMIN B1, VITAMIN A, FOLIC ACID, BIOTIN, VITAMIN D, VITAMIN B12, SWEETENER (ASPARTAME), COENZYME Q10 AND ORGANIC SILICON.

NUTRITIONAL VALUE per bar (35g)

KJ	Kcal	Fats	Saturated	Carbohydrate	Sugar	D. fiber	Proteins	Salt
773	185	9.56g	4.69g	11.80g	8.72g	0.64	12.60g	0.05g

30
bars

EAN 13 CODE 8437006168687
INTERNAL CODE 407043
NATIONAL CODE 157873.0



PROTEIN SNACK YOGURT - CHOCO

30 x 35g
CREATINE + L-GLUTAMINE

MILK PROTEIN BLEND, MILK CHOCOLATE COVERING [SUGAR, COCOA BUTTER, SKIMMED MILK POWDER, COCOA PASTE, WHEY, ANHYDROUS BUTTER, EMULSIFIER (SOY LECITHIN), AROMAS (NATURAL VANILLA AROMA)], NON-HYDROGENATED VEGETABLE FAT OF PALM, SUGAR, WHEAT FLOUR, FRUCTOSE, COCOA BUTTER, CREATINE, L-GLUTAMINE, SKIMMED MILK POWDER, EMULSIFIERS (SOY LECITHIN AND AND POLYGLYCEROL POLYRICINOLEATE), THICKNER (GUAR GUM), GASIFIERS (AMMONIUM BICARBONATE AND SODIUM BICARBONATE), YOGHURT AROMA, AND VITAMIN COMPLEX [VITAMIN C (L-SODIUM SCORBATE), NIACIN (NICOTINAMIDE), VITAMIN E, PANTOTHENIC ACID, VITAMIN B2, VITAMIN B6, VITAMIN B1, VITAMIN A, FOLIC ACID, BIOTIN, VITAMIN D, VITAMIN B12], AND AND POLYGLYCEROL POLYRICINOLEATE), THICKNER (GUAR GUM), GASIFIERS (AMMONIUM BICARBONATE AND SODIUM BICARBONATE), AND VITAMIN COMPLEX [VITAMIN C, NIACIN, VITAMIN E, PANTOTHENIC ACID, VITAMIN B2, VITAMIN B6, VITAMIN B1, VITAMIN A, FOLIC ACID, BIOTIN, VITAMIN D, VITAMIN B12], AND SWEETENER (SUCRALOSE)

NUTRITIONAL VALUE per bar (35g)

KJ	Kcal	Fats	Saturated	Carbohydrate	Sugar	D. fiber	Proteins	Salt
778	186	9.47g	5.68g	12.47g	9.95g	0.22g	12.61g	0.07g

30
bars

EAN 13 CODE 8437006168663
INTERNAL CODE 407044
NATIONAL CODE 157872.3



PROTEIN SNACK CHOCO

30 x 35g
CREATINE + GLUTAMINE + GLUCOMANNAN

MILK CHOCOLATE COVERING [SUGAR, COCOA BUTTER, SKIMMED MILK POWDER, COCOA PASTE, WHEY, ANHYDROUS BUTTER, EMULSIFIER (SOY LECITHIN), AROMAS (NATURAL VANILLA AROMA AND CHOCOLATE AROMA)], MILK PROTEINS, FRUCTOSE, NON-HYDROGENATED VEGETABLE FAT OF PALM, WHEAT FLOUR, GLUCOMANNAN, CREATINE, SUGAR, L-GLUTAMINE, INULIN, COCOA PASTE, COCOA BUTTER, EMULSIFIERS (SOY LECITHIN AND POLYGLYCEROL POLYRICINOLEATE), THICKNER (GUAR GUM), GASIFIERS (AMMONIUM BICARBONATE AND SODIUM BICARBONATE), AND VITAMIN COMPLEX [VITAMIN C (L-SODIUM SCORBATE), NIACIN (NICOTINAMIDE), VITAMIN E (ACETATE D-ALPHA-TOCOPHERYL), PANTOTHENIC ACID (D-PANTOTHENATE CALCIUM), VITAMIN B2, VITAMIN B6, VITAMIN B1, VITAMIN A, FOLIC ACID, BIOTIN, VITAMIN D, VITAMIN B12, SWEETENER (ASPARTAME), COENZYME Q10 AND ORGANIC SILICON.

NUTRITIONAL VALUE per bar (35g)

KJ	Kcal	Fats	Saturated	Carbohydrate	Sugar	D. fiber	Proteins	Salt
753	180	9.28g	6.15g	14.03g	11.37g	2.67	8.75g	0.06g

30
bars

EAN 13 CODE 8437006168649
INTERNAL CODE 407039
NATIONAL CODE 157874.7





LOW CALORIE CUSTARD MEAL REPLACEMENT FOR WEIGHT CONTROL

6 sachets x 50g

MILK PROTEINS, SUNFLOWER LECITHIN, MALTODEXTRIN, SKIMMED MILK, SOYBEAN OIL, SOY LECITHIN, L-ASCORBYL PALMITATE AND ALPHA-TOCOPHEROL, MEDIUM-CHAIN TRIGLYCERIDES, AROMAS, POTASSIUM AND MAGNESIUM CARBONATE, POTASSIUM CITRATE, CALCIUM PHOSPHATE, IRON FUMARATE, ZINC SULPHATE, COPPER AND MAGNESIUM SULPHATE, POTASSIUM IODIDE, SODIUM SELENITE, MODIFIED POTATO ALMIDON, XANTHAN GUM AND CARRAGEENANS, SALT, ASPARTAME, SILICON DIOXIDE, VITAMINS C, B3, E, B5, B6, B2, B1, A, B9, B8, D3 AND B12 AND NATURAL ROSEMARY EXTRACT.

CONTAINS A SOURCE OF PHENYLALANINE.

CUSTARD CHOCOLATE. NUTRITIONAL VALUE per sachet (50g)									CUSTARD LEMON. NUTRITIONAL VALUE per sachet (50g)									CUSTARD VANILLA. NUTRITIONAL VALUE per sachet (50g)								
KJ	Kcal	Fats	Saturated	Carbohydrate	Sugar	D. fiber	Proteins	Salt	KJ	Kcal	Fats	Saturated	Carbohydrate	Sugar	D. fiber	Proteins	Salt	KJ	Kcal	Fats	Saturated	Carbohydrate	Sugar	D. fiber	Proteins	Salt
597.4	143.2	1.62g	<0.25g	17.88g	7.94g	<0.5	14.29g	0.5g	622.46	149.2	0.97g	<0.25g	21.98g	10.74g	<0.5	13.16g	0.5g	624.46	149.8	0.97g	<0.25g	22.1g	11.75g	<0.5	13.17g	0.5g
EAN 13 CODE 8436048041880 INTERNAL CODE 316011 NATIONAL CODE 158333.8									EAN 13 CODE 8436048041927 INTERNAL CODE 316010 NATIONAL CODE 158334.5									EAN 13 CODE 8436048041934 INTERNAL CODE 316012 NATIONAL CODE 158332.1								



PROTEIN SLICED BREAD

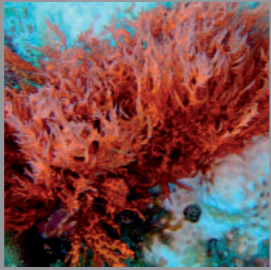
365g

BREAD MIX (WHEAT PROTEIN, SOY PROTEIN, LUPIN PROTEIN, SOY FLOUR, BROWN AND YELLOW FLAXSEED, SUNFLOWER SEED, WHOLE WHEAT FLOUR, WHEAT BRAN, APPLE FIBER, SESAME SEED, SALT, ROAST BARLEY MALT FLOUR, SOY LECITHIN AND SODIUM DIACETATE), WATER, WHEAT FLOUR, YEAST, COCONUT BUTTER (FROM ECOLOGICAL AGRICULTURE), BAMBOO FIBER, INULIN, WHEAT FIBER, POTATO STARCH, GRAPE JUICE CONCENTRATE, AROMAS AND ASCORBIC ACID.



EAN 13 CODE 8437010199066 INTERNAL CODE 317207											NUTRITIONAL VALUE per 50g approx. (2 slices)						NUTRITIONAL VALUE per 100g					
KJ	Kcal	Fats	Saturated	Carbohydrate	Sugar	D. fiber	Proteins	Salt	KJ	Kcal	Fats	Saturated	Carbohydrate	Sugar	D. fiber	Proteins	Salt					
634.5	151.5	8.5g	2.55g	5.6g	0.85g	4.4g	11g	0.5g	1269	303	17g	5.1g	11.2g	1.7g	8.8g	22g	1g					

* Comparisons made with relevant market products.





ASTROMUSC COLLAGEN

20 sachets 7.2g

HYDROLYSED COLLAGEN, GLUCOSAMINE SULPHATE, CHONDROITIN SULPHATE, MSM (METHYLSULFONYLMETHANE), BAMBOO, MARSH HORSETAIL, LEMON, HARPAGOPHYTUM AND VITAMIN C.

1 sachet per day



EAN 13 CODE 8436048048063
INTERNAL CODE 203072
NATIONAL CODE 160884.0

COLAGEN PLUS

30 sachets 6.3g

HYDROLYSED COLLAGEN, AÇAÍ, ALPHA-LIPOIC ACID, BAMBOO, SODIUM HYALURONATE, VITAMIN C, GRAPE, POLYGONUM CUSPIDATUM AND SODIUM SELENITE.

1 sachet per day



EAN 13 CODE 8436048041972
INTERNAL CODE 203064
NATIONAL CODE 160885.7

SNACK COLLAGEN + STEVIA

30 bars 30g

COCOA CREAM, BLACK VEGETABLE COVERING, PIG COLLAGEN, TRUFFLE, GLUCOMANNAN, GLUTAMINE, CREATINE MONOHYDRATE, CINNAMON, AROMAS AND STEVIA.

NUTRITIONAL VALUE per 30g

KJ	Kcal	Fats	Saturated	Carbohydrate	Sugar	D. fiber	Proteins	Salt
590	141	6.6g	3.3g	12.8g	11.4g	1.0	7.1g	0.06g

1 barra per day



EAN 13 CODE 8436048043778
INTERNAL CODE 407053

COLAGEN + ORGANIC SILICON WITH MAGNESIUM AND CALCIUM

360 tablets / 180 tablets 814mg

HYDROLYSED COLLAGEN, MAGNESIUM CARBONATE, CALCIUM CARBONATE, MAGNESIUM HYDROXIDE, VITAMIN C, BAMBOO AND VITAMIN D.

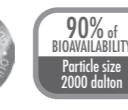
6 tablets per day



EAN 13 CODE 8437010199974
INTERNAL CODE 201370



8437010199943
216014



EAN 13 CODE 8436048049312
INTERNAL CODE 201369
NATIONAL CODE



8436048048353
201362
178254.0



8436048048353
201362
178254.0



COLAGEN PLUS REJUVEN-AGE

powder 300g

HYDROLYSED COLLAGEN, AÇAI, ALPHA-LIPOIC ACID, POMEGRANATE, SODIUM HYALURONATE, BAMBOO, VITAMIN C, POLYGONUM, COENZYME Q10, GRAPE, HAEMATOCOCCUS SEAWEED, SODIUM SELENITE.

15 grams per day

TRIPLE BERRY FLAVOUR

EAN 13 CODE 8437010199875
INTERNAL CODE 216012
NATIONAL CODE 176828.5

COLAGEN PLUS DAILY

powder 300g / doypack 500g

HYDROLYSED COLLAGEN, CALCIUM CARBONATE, MAGNESIUM CARBONATE, BAMBOO, VITAMIN C, AND SODIUM HYALURONATE.

10 grams per day

TRIPLE BERRY FLAVOUR



300g / 500g

EAN 13 CODE 8437010199851
INTERNAL CODE 216013
NATIONAL CODE 176825.4



COLAGEN PLUS WOMAN

powder 300g

HYDROLYSED COLLAGEN, POTASSIUM GLUCOSAMINE SULPHATE, CHONDROITIN SULPHATE, MSM (METHYL SULFONYL METHANE), CALCIUM CITRATE, MAGNESIUM OXIDE, VITAMIN C, BOSWELLIA, HARPAGOFITO, BAMBOO, SUCRALOSE, COENZYME Q10 AND VITAMIN D3.

15 grams per day

CITRUS

FLAVOUR

EAN 13 CODE 8437010199899
INTERNAL CODE 216010
NATIONAL CODE 176830.8



COLAGEN PLUS SPORT



powder 300g
 HYDROLYSED COLLAGEN, TAURINE,
 POTASSIUM GLUCOSAMINE SULPHATE,
 CHONDROITIN SULPHATE, BROMELAIN,
 VITAMIN C, MSM, BAMBOO,
 HYALURONATE SODIUM AND VITAMIN B6.

15 grams per day

ORANGE
 FLAVOUR

EAN 13 CODE 8437010199882
 INTERNAL CODE 216009
 NATIONAL CODE 176829.2



COLAGEN PLUS FLEXIPLUS

powder 300g / doypack 500g
 HYDROLYSED COLLAGEN, POTASSIUM GLUCOSAMINE SULPHATE, CHONDROITIN
 SULPHATE, MAGNESIUM CITRATE, VITAMIN C, HARPAGOPHYTUM, BAMBOO, SODIUM
 HYALURONATE, GRAPE, BOSWELLIA AND VITAMIN K2.

15 grams per day

15 grams per day

ORANGE
 FLAVOUR

EAN 13 CODE 8437010199888
 INTERNAL CODE 216011

ORANGE FLAVOUR	300g	peptan 300g	peptan 500g
EAN 13 CODE	8436048048599	8436048049299	
INTERNAL CODE	216006	219002	
NATIONAL CODE	176827.8	182967.2	



OMEGA3. 35% EPA + 25% DHA

90 pearls 1366mg / 100 pearls 708.91mg
FISH OIL (35% EPA AND 25% DHA)
AND NATURAL VITAMIN E.
Gelatin pearl.

1 pearl de 1.366mg per day	4 pearls 708,91mg per day
9 units	12 units
EAN 13 CODE 8436048041231	INTERNAL CODE 207094
EAN 13 CODE 8437006168076	INTERNAL CODE 207089

KRILL OIL

60 pearls 715mg
KRILL OIL (LIPID EXTRACT FROM
THE CRUSTACEAN ANTARCTIC
KRILL)
Gelatin pearl.

3 pearls per day
EAN 13 CODE 8437018023684
INTERNAL CODE 207112

VEGAN PROTEIN

bottle 1Kg
RICE PROTEIN ISOLATE
PEA PROTEIN ISOLATE,
HEMP PROTEIN,
MORINGA AND BAOBAB.

35 grams per day

VANILA FLAVOUR	VEGAN	NUTRITIONAL VALUE PER 35G (1 DOSE)								
		KJ	Kcal	Fats	Saturated	Carbohydrate	Sugar	D. fiber	Proteins	Salt
		530.95	124.9	0.287g	0.0735g	4.97g	1.19g	0.1mg	25.2g	0.6g

EAN 13 CODE	8437018023691
INTERNAL CODE	216015
NATIONAL CODE	192644.9



PERFIL ANSIONAT

30 capsules 480mg

PASSIFLORA, HOPS, LEMON VERBENA, L-TRYPTOPHAN, VERBENA, VITAMINS B3, B6 AND B1, MICROCRYSTALLINE CELLULOSE, MAGNESIUM STEARATE, AND SILICON DIOXIDE.

Gelatin capsule.

1-3 capsules per day

12
units

EAN 13 CODE 8437008988252
INTERNAL CODE 200534

ANTI STRESS spray

15ml

ELEUTHEROCOCCUS, RHODIOLA, L-TRYPTOPHAN, SAFFRON, NIACIN, VITAMIN B6, B2 AND B1 AND FOLIC ACID.

3 spraying x 3 times per day

12
units

EAN 14 CODE 8436048047271
INTERNAL CODE 215003
NATIONAL CODE 185062. 1

COMPO NAT 3 SEDANT

spray 50ml

PASSIONFLOWER GLYCERIN EXTRACT, HAWTHORN, VALERIAN AND ORANGE BLOSSOM.

10 spraying x 3 times per day

EAN 13 CODE 8436048041156
INTERNAL CODE 202354



TRIPTOPHAN

60 capsules 775mg

GRIFFONIA(5-HTP) L-TRIPTÓFANO Y VITAMIN B6.

Gelatin capsule.

1-3 capsules per day

12
units

EAN 13 CODE 8436048043563
INTERNAL CODE 201313



TRIPTOPHAN ⊕

60 tablets 831.8mg

L-TRYPTOPHAN, MAGNESIUM HYDROXIDE, VITAMINS B3, B5 AND B6 AND MELATONIN.

2 tablets per day

12
units

EAN 13 CODE 8436048049237
INTERNAL CODE 201368
NATIONAL CODE 182357.1



MELATO+

30 capsules 378mg

MELATONIN , POPPY, MAYPOP, LEMON BALM, TILIA AND VALERIAN.

Gelatin capsule.

1 capsule per day

12
units

EAN 13 CODE 8436048048025
INTERNAL CODE 200263
NATIONAL CODE 181062.5



NATUR C

90 tablets 1000mg
ROSA CANINA,
BITTER ORANGE,
VITAMIN C
AND ACEROLA.

1 tablet per day

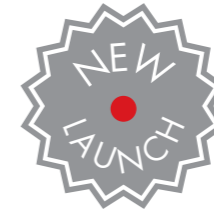
EAN 13 CODE 8436048042092
INTERNAL CODE 2000405

VITAMIN C

60 capsules 917.5mg
VITAMIN C.
Gelatin capsule.

1 capsule per day

EAN 13 CODE 8436582881355
INTERNAL CODE 207135
NATIONAL CODE 199045.7



	<h3>VITAMIN D3</h3> <p>60 capsules 377mg</p>
	<p>RICE FLOUR AND VITAMIN D3. Gelatin capsule.</p>
	<p>1 capsule per day</p>

EAN 13 CODE 8436582881508
INTERNAL CODE 207136



B-COMPLEX

60 capsules 596mg

BREWER'S YEAST, CHOLINE BITARTRATE, INOSITOL, VITAMIN B3, VITAMIN B5, VITAMIN B6, VITAMIN B1, VITAMIN B2, VITAMIN B12, MALTODEXTRIN, FOLIC ACID AND BIOTIN.

Gelatin capsule.

1 capsule per day

12 units

EAN 13 CODE 8436048042085
INTERNAL CODE 200402

VITAMIN E

100 capsules 546mg

VITAMIN E.
Vegetable capsule.

1 capsule per day

12 units

EAN 13 CODE 8436048040814
INTERNAL CODE 200512

MULTIVITAMIN FORMULA

60 capsules 753.4mg

VITAMIN C, KELP SEAWEED, VITAMIN E, VITAMIN B1, VITAMIN B6, PANTOTHENIC ACID, VITAMIN B2, NIACIN, INOSITOL, CALCIUM CARBONATE, MAGNESIUM OXIDE, CHOLINE BITARTRATE, BAMBOO, CITRUS BIOFLAVONOIDS, BETAINE HYDROCHLORIDE, ZINC OXIDE, BETA CAROTENE, COPPER SULPHATE, IRON BISGLYCINATE, FOLIC ACID, VITAMIN B12, BIOTIN, SELENOMETHIONINE, CHROMIUM PICOLINATE AND VITAMIN D3.

Gelatin capsule.

1 capsule per day

12 units

EAN 13 CODE 8436048048070
INTERNAL CODE 200688



SKIN, HAIR AND NAILS

60 capsules 563mg

HYDROLYSED MARINE COLLAGEN, BREWER'S YEAST, MARSH HORSETAIL, ZINC GLUCONATE, IRON GLUCONATE, VITAMIN C, TAURINE, SELENIUM YEAST, VITAMIN B3, VITAMIN E, VITAMIN B5, VITAMIN B6, VITAMIN B2, VITAMIN B1, VITAMIN A, FOLIC ACID AND BIOTIN.

Gelatin capsule.

2 capsules per day

12 units

EAN 13 CODE 8436048043556
INTERNAL CODE 200505



COENZIME Q10

60 capsules 335mg

COENZIME Q10 AND VITAMIN B2.
Vegetable capsule.

1 capsule per day



VEGAN

12 units

EAN 13 CODE 8436582880907
INTERNAL CODE 207131

HYALURONIC ACID

60 capsules 276.25mg

SODIUM HYALURONATE.
Vegetable capsule.

2-3 capsules per day



VEGAN

12 units

EAN 13 CODE 8436582880921
INTERNAL CODE 200954

SHARK CARTILAGE

90 capsules 870mg

SHARK CARTILAGE.
Gelatin capsule.

3 capsules per day

EAN 13 CODE 8436048040746
INTERNAL CODE 200593



ACTIVON

60 capsules 522mg

ELEUTHEROCOCCUS ,
NATURAL ANHYDROUS CAFFEINE
AND TAURINE. Gelatin capsule.

1-2 capsules per day

display 12 units

EAN 13 CODE 8436582880051
INTERNAL CODE 201317
NATIONAL CODE 194200.5





POSTPARTY SOLUTION

10 bottle sticks 20ml

FRUCTOSE, COLIFLOWER, ALOE VERA, RUTIN, FENNEL, FENUGREEK, ALFALFA, MINT, GINGER, DANDELION, LIQUORICE, CINNAMON, VITAMIN C, VITAMIN B3, VITAMIN B2, VITAMIN A, AND VITAMIN B12.

20ml before bedtime

box
10
units

display
50
units

EAN 13 CODE
INTERNAL CODE

box 10 units
8436582881478
217006

display 50 units
18436582881314
217005



LESSCOL

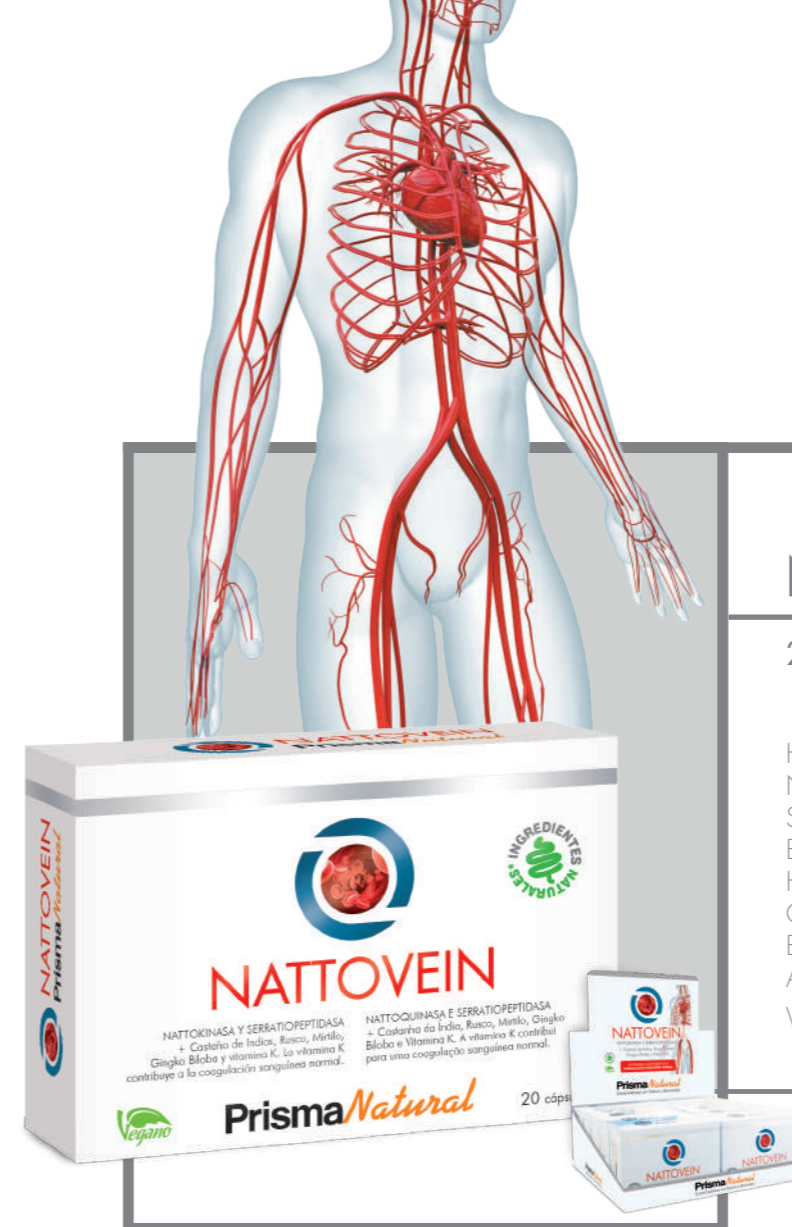
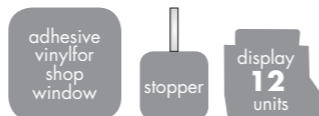
60 capsules 518.51mg

RED RICE YEAST, BETA GLUCAN, AFRICAN MANGO, MAITAKE, POLYGONUM, MAGNESIUM STEARATE, COENZYME Q10 AND VITAMIN D.

Gelatin capsule.

1 capsule per day

EAN 13 CODE 8437010199189
INTERNAL CODE 200712
NATIONAL CODE 184982.3



NATTOVEIN

20 capsules 768mg

HORSE CHESTNUT,
NATTOKINASE,
SERRATIOPEPTIDASE,
BILBERRY,
HAWTHORN,
GINKGO,
BUTCHER'S BROOM,
AND VITAMIN K2.

Vegetable capsule.

1 capsule per day



VEGAN



EAN 13 CODE 8437018023769
INTERNAL CODE 200721
NATIONAL CODE 193857.2



VISION+

30 capsules 493.70mg

BILBERRY, GINKGO, VITAMIN C, SOD (SUPEROXIDE DISMUTASE) HYTOLIVE®, COENZYME Q10, LUTEIN, ZINC OXIDE, ALPHA-LIPOIC ACID, PQQ (PYRROLOQUINOLINE QUINONE), ZEAXANTHIN, ASTAXANTHIN, AND SODIUM SELENITE.

Gelatin capsule.

1 capsule per day



display
12
units

EAN 13 CODE 8437010199363
INTERNAL CODE 200714
NATIONAL CODE 186235.8



MEMORY LEVEL

30 capsules 838mg

L-CARNITINE TARTRATE, GINKGO, BACOPA, TAURINE, L-GLUTAMINE, PHOSPHATIDYLSERINE, CALCIUM PHOSPHATE DIBASIC, VINCA, HUPERZIA SERRATA, DOCOSAHEXAENOIC ACID, ZINC OXIDE, PANTOTHENIC ACID, AND VITAMIN B1.

Gelatin capsule.

2 capsules per day



EAN 13 CODE 8436048049084
INTERNAL CODE 200703
NATIONAL CODE 192284.7



TURMERIC

30 capsules 376mg

CURSOL®, AND MANGANESE SULPHATE.

Gelatin capsule.

1 capsule per day

EAN 13 CODE 8436048048926
INTERNAL CODE 200701
NATIONAL CODE 178253.3



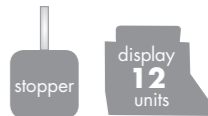
CYSTU BALANCE

30 capsules 416mg

CRANBERRY AND D-MANNOSE.

Vegetable capsule.

2 capsules per day



EAN 13 CODE 8436582880037
INTERNAL CODE 201315
NATIONAL CODE 194201.2



SIMBIOTIC

15 sticks powder 3.5g
FOS (FRUCTO-OLIGOSACCHARIDES), LACTOBACILLUS RHAMNOSUS, BIFIDOBACTERIUM BIFIDUM, STREPTOCOCCUS THERMOPHILUS, LACTOBACILLUS BULGARICUS, LACTOBACILLUS ACIDOPHILUS, BIFIDOBACTERIUM LACTIS, BIFIDOBACTERIUM LONGUM, LACTOBACILLUS FERMENTUM, LACTOBACILLUS PLANTRUM AND LACTOBACILLUS PARACASEI.

1 stick per day

LEMON
FLAVOUR

EAN 13 CODE 8436582880297
INTERNAL CODE 207121
NATIONAL CODE 160883.3

BOMBONLAX + PROBIÓTICOS

14 chocolates 15g / 50 chocolates 15g
FIG, VEGETAL COVERING, LACTITOL, MALTITOL, GUAR GUM, GLYCERIN, SENNA, DATE, RHUBARB, YOGURT, TAMARIND, LACTIC ACID, AND LACTOBACILLUS ACIDOPHILUS

NUTRITIONAL VALUE per 15g (1 chocolate)

KJ	Kcal	Fats	Saturated	Carbohydrate	Sugar	Polialcoholes	D. fiber	Proteins	Salt
228.4	54.5	1.5g	0.7g	9.6g	4.7g	1.7g	1.6mg	0.5g	2.3g

1 chocolate per day

14 units
50 units

EAN 13 CODE 8436048042221
INTERNAL CODE 309010
NATIONAL CODE 158336.9

MAGNESIUM CARBONATE

200g
MAGNESIUM CARBONATE 100%.

1.35g 1 teaspoon per day

EAN 13 CODE 8437006168090
INTERNAL CODE 208095

VEGETAL CARBON & PROBIOTICS

90 capsules 550mg
MEDICINAL CHARCOAL, INULIN, ANISE, FENNEL, LACTOBACILLUS REUTERI AND LACTOBACILLUS PLANTRUM.
Vegetable capsule.

6 capsules per day

EAN 13 CODE 8436048049213
INTERNAL CODE 207132

ALOE VERA JUICE

1 litre
ALOE VERA JUICE 99.4%.



NUTRITIONAL VALUE PER 100g

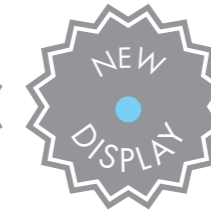
KJ	Kcal	Fats	Saturated	Carbohydrate	Sugar	Polialcoholes	D. fiber	Proteins	Salt
38	9	<0.50g	<0.01g	<0.50g	<0.50g	0.89g	<1.0g	0.04g	

NUTRITIONAL VALUE PER 40ml (aprox. 40g)

KJ	Kcal	Fats	Saturated	Carbohydrate	Sugar	Polialcoholes	D. fiber	Proteins	Salt
15.2	3.6	<0.20g	<0.004g	<0.20g	<0.20g	0.36g	<0.40g	0.016g	

40ml per day

EAN 13 CODE 8437006168083
INTERNAL CODE 210153



ACIDNATUR

14 liquid sticks 4.5g

CALCIUM CARBONATE,
FENNEL,
MAGNESIUM CARBONATE,
SODIUM CHLORIDE,
ZINC OXIDE AND GINGER.




1-2 sticks per day



VEGAN



MINT
FLAVOUR



display
12
units

EAN 13 CODE
INTERNAL CODE
NATIONAL CODE

8436048048957
217002
178252.6



**PROPOLIS
+REISHI+SHIITAKE
+MAITAKE**

30 capsules 476mg
microgranulated

PROPOLIS,
MAITAKE,
REISHI
AND SHIITAKE.
Gelatin capsule.

1-2 capsules per day

EAN 13 CODE 8436582880136
INTERNAL CODE 200947



**ORGANIC SILICON
+COENZYME Q10**

30 capsules 476mg
microgranulated

COENZYME Q10
AND BAMBOO.
Gelatin capsule.

1 capsule per day

EAN 13 CODE 8436582880143
INTERNAL CODE 200948



**BURDOCK
+ ZINC**

30 capsules 478mg
microgranulated

BURDOCK,
AND ZINC GLUCONATE.
Gelatin capsule.

1-2 capsules per day

EAN 13 CODE 8436582880686
INTERNAL CODE 200953



**HARPAGOPHYTUM
+ COPPER**

30 capsules 476mg
microgranulated

HARPAGOPHYTUM
AND COPPER GLUCONATE.
Gelatin capsule.

1 capsule per day

EAN 13 CODE 8436582880211
INTERNAL CODE 200949



**HORSE-CHESTNUT
+ HAMAMELIS
+ SELENIUM**

30 capsules 481.34mg
microgranulated

HORSE-CHESTNUT,
HAMAMELIS
AND SODIUM
SELENITE.
Gelatin capsule.

1-2 capsules per day

EAN 13 CODE 8437018023813
INTERNAL CODE 200931



**GINKGO BILOBA
+ SELENIUM**

30 capsules 476mg
microgranulated

GINKGO
AND SODIUM SELENITE.
Gelatin capsule.

1-2 capsules per day

EAN 13 CODE 8436582880129
INTERNAL CODE 200946



MARSH HORSETAIL + CALCIUM	CALIFORNIA POPPY + MAGNESIUM	HAWTHORN + MAGNESIUM	GRIFFONIA 5-HTP + MAGNESIUM	VALERIAN + MAGNESIUM
30 capsules 478mg microgranulated	30 capsules 476mg microgranulated	30 capsules 496mg microgranulated	30 capsules 478mg microgranulated	30 capsules 478mg microgranulated
MARSH HORSETAIL AND CALCIUM GLUCONAT. Gelatin capsule.	CALIFORNIA POPPY AND MAGNESIUM GLUCONATE. Gelatin capsule.	HAWTHORN AND MAGNESIUM GLUCONATE. Gelatin capsule.	GRIFFONIA AND MAGNESIUM GLUCONATE. Gelatin capsule.	VALERIAN AND MAGNESIUM GLUCONATE. Gelatin capsule.
1-2 capsules per day	1-2 capsules per day	1-2 capsules per day	1-2 capsules per day	1-2 capsules per day
EAN 13 CODE 8436048047578 INTERNAL CODE 200674	EAN 13 CODE 8437018023776 INTERNAL CODE 200945	EAN 13 CODE 8437018023806 INTERNAL CODE 200930	CÓDIGO EAN 13 8436582880679 CÓDIGO INTERNO 200952	EAN 13 CODE 8436582880914 INTERNAL CODE 200955



SOAKED GARLIC

110 pearls 680mg
SOAKED GARLIC OIL.
PEARL: GELATIN, GLYCERIN AND WATER.

3-6 pearls per day

EAN 13 CODE 8436048040685
INTERNAL CODE 207096

ARTICHOKE

100 tablets 500mg
ARTICHOKE.

6 tablets per day

EAN 13 CODE 8436048040326
INTERNAL CODE 201312

MILK THISTLE

100 tablets 500mg
MILK THISTLE AND BAMBOO.

6 tablets per day

EAN 13 CODE 8436048040364
INTERNAL CODE 201324

PRISMA LAX ALOE VERA + INULIN

60 tablets 500mg
INULIN, ACIBAR AND ALOE.

1-2 tablets per day

EAN 13 CODE 8436048049022
INTERNAL CODE 201366



HORSETAIL

100 tablets 500mg
HORSETAIL AND FOS (FRUCTO-OLIGOSACCHARIDES).

2-3 tablets per day

EAN 13 CODE 8436048040388
INTERNAL CODE 201327

DANDELION

100 tablets 500mg
DANDELION AND FOS (FRUCTO-OLIGOSACCHARIDES).

1-3 tablets per day

EAN 13 CODE 8436048040401
INTERNAL CODE 201329



ECHINACEA

100 tablets 500mg
PURPLE CONEFLOWER
AND FOS
(FRUCTO-OLIGOSACCHARIDES).

6 tablets per day

EAN 13 CODE 8436048040432
INTERNAL CODE 201332

SPIRULINA

100 tablets 400mg
SPIRULINA,
BREWER'S YEAST,
AND VITAMIN B12.

4 tablets per day

EAN 13 CODE 8436048040456
INTERNAL CODE 201334

WHEAT GERM

110 pearls 717mg
WHEAT GERM OIL.
Gelatin pearl.

9 pearls per day

EAN 13 CODE 8436048040708
INTERNAL CODE 207104

12
units

GINKGO BILOBA

100 tablets 700mg
GINKGO BILOBA,
FRUCTO-OLIGOSACCHARIDES
AND BAMBOO.

2 tablets per day

EAN 13 CODE 8436048040487
INTERNAL CODE 201337

12
units

RED KOREAN GINSENG

60 capsules 546mg
RED KOREAN GINSENG.
Gelatin capsule.

1-2 capsules per day

EAN 13 CODE 8436048049138
INTERNAL CODE 200705

12
units

GRAVIOLA

60 capsules 546mg
GRAVIOLA.
Gelatin capsule.

3-6 capsules per day

EAN 13 CODE 8436048044522
INTERNAL CODE 200663

12
units



BREWER'S YEAST

150 tablets 500mg
BREWER'S YEAST.

4-5 tablets per day

EAN 13 CODE 8436048044010
INTERNAL CODE 201360

MACA

100 tablets 500mg
MACA.

3-4 tablets per day

EAN 13 CODE 8436048041088
INTERNAL CODE 201359



MORINGA + AÇAÍ

60 tablets 1000mg

MORINGA,
VITAMIN C,
AÇAÍ,
ZINC OXIDE,
VITAMIN B6,
VITAMIN B1,
BIOTIN,
CHROMIUM PICOLINATE
AND VITAMIN B12.

1 tablet per day

12
units

EAN 13 CODE 8436048048841
INTERNAL CODE 201400
NATIONAL CODE 178250.2



EVENING PRIMROSE + VIT E

100 pearls 1,407mg

FIRST COLD-PRESSED EVENING PRIMROSE OIL, AND VITAMIN E.

Pearl gelatin.

1 pearl per day

EAN 13 CODE 8437006168618
INTERNAL CODE 207091

SOY LETHICIN

90 pearls 1,655mg

SOY LETHICIN.

Pearl gelatin.

2-3 pearls per day

EAN 13 CODE 8437006168069
INTERNAL CODE 207087

12 units

ORTHOSIPHON

100 tablets 500mg

ORTHOSIPHON.

1-2 tablets per day

EAN 13 CODE 8436048040562
INTERNAL CODE 201345

PROPOLIS+VIT C

100 chewable tablets 800mg

PROPOLIS, HONEY, VITAMIN C, LEMON, THYME AND ECHINACEA

3 chewable tablets per day

LEMON FLAVOUR

EAN 13 CODE 8436582881409
INTERNAL CODE 201606

12 units

SAGE

100 tablets 500mg

SAGE.

6 tablets per day

EAN 13 CODE 8436048040616
INTERNAL CODE 201350

GREEN TEA

100 tablets 700mg

GREEN TEA.

3-6 tablets per day

EAN 13 CODE 8436048040654
INTERNAL CODE 201354



PLANT BB KIDS

20 vials 10ml

FRUCTOSE, ROYAL JELLY, THYME, CALCIUM GLUCONATE, PROPOLIS, ECHINACEA, CHOLINE CITRATE, VITAMIN C, **COLOSTRUM**, APPLE, **OMEGA-3**, VITAMIN E, VITAMIN B5, VITAMIN B6, VITAMIN B2, VITAMIN B1, FOLIC ACID, BIOTIN, VITAMIN D AND VITAMIN B12.

1 vial per day



EAN 13 CODE 8437006168502
INTERNAL CODE 210158
NATIONAL CODE 162464.2



PLANT BIOTIC INMU-DEFEN

20 vials 10ml

FRUCTOSE, PROPOLIS, ROYAL JELLY, ECHINACEA, THYME, HELICRISO, SHIITAKE, VITAMIN C, **COLOSTRUM**, BILBERRY, L-LEUCINE, L-LYSINE, L-THREONINE, L-VALINE, VITAMIN E, VITAMIN B5, VITAMIN B6, VITAMIN B2, VITAMIN B1, FOLIC ACID, BIOTINE, COPPER GLUCONATE, VITAMIN D, AND VITAMIN B12.

1 vial per day



EAN 13 CODE 8437006168472
INTERNAL CODE 210159
NATIONAL CODE 162460.4



PLANT PLUS FORTE

20 vials 10ml

FRUCTOSE, ROYAL JELLY, PROPOLIS, ECHINACEA, HARPAGOPHYTUM, APPLE, **OMEGA-3**, WILLOW, GINGKO, HAWTHORN, HORSE-CHESTNUT, VITAMIN C, VITAMIN E, VITAMIN A AND CHROMIUM CHLORIDE.

1 vial per day



EAN 13 CODE 8437006168489
INTERNAL CODE 210164
NATIONAL CODE 162462.8



PLANT VITAL ENERGY

20 vials 10ml

FRUCTOSE, ROYAL JELLY, ELEUTHEROCOCCUS, L-CARNITINE TARTRATE, L-ARGININE, L-PROLINE, VITAMIN C, VITAMIN E, VITAMIN B5, VITAMIN B6, VITAMIN B2, VITAMIN B1, FOLIC ACID, BIOTIN, VITAMIN D AND VITAMIN B12.

1 vial per day



EAN 13 CODE 8437006168496
INTERNAL CODE 210165
NATIONAL CODE 162463.5



COMPO NAT 1 INMUNO-DEFEN

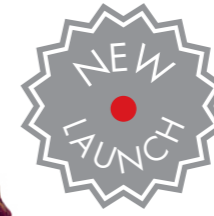
spray 50ml

PROPOLIS GLYCERIN EXTRACT,
THYME,
AND ECHINACEA.

21
units

10 spraying x 3 times per day

EAN 13 CODE 8436048041132
INTERNAL CODE 202352



RESFARÍN

spray 50ml

PROPOLIS,
MANUKA HONEY,
HEDGE MUSTARD,
CLOVE ESSENTIAL OIL,
MINT ESSENTIAL OIL,
PEPPERMINT,
AND GINGER.

2 spraying x 3 times per day

12
units

EAN 13 CODE 8436582881089
INTERNAL CODE 207124
NATIONAL CODE in process



INMUPROTEC

30 chewable tablets 878mg

GLUCOSE SYRUP,
MALTODEXTRIN,
PROPOLIS, BROMELAIN,
VITAMIN C, HONEY,
MARSHMALLOW,
HEDGE MUSTARD,
AND ZINC SULPHATE.

1-3 chewable tablets per day

EAN 13 CODE 8436582881461
INTERNAL CODE 207130
NATIONAL CODE in process



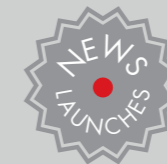
INMUNEFORTE

30 capsules 507mg

AMERICAN GINSENG,
SHIITAKE , ZINC,
PELARGONIUM,
PROPOLIS,
L- ARGININE, LACTOFERRIN
AND LICORICE.
Gelatin capsule.

2 capsules per day

EAN 13 CODE 8436582881669
INTERNAL CODE 207138
NATIONAL CODE in process



INMUDEFEN

solution 200ml

FOS (FRUCTOOLIGOSACCHARIDES),
PROPOLIS, ROYAL JELLY, SHIITAKE,
VITAMIN C, PANTOTHENIC ACID,
RIBOFLAVIN (VITAMIN B2),
VITAMIN B6, THIAMINE, FOLIC ACID,
BIOTIN, COPPER GLUCONATE,
VITAMIN D, AND VITAMIN B12.

10ml per day

EAN 13 CODE 8436582881331
INTERNAL CODE 210037
NATIONAL CODE in process



INMUDEFEN KIDS

solution 200ml

FOS (FRUCTOOLIGOSACCHARIDES),
PROPOLIS, ROYAL JELLY, SHIITAKE,
VITAMIN C, PANTOTHENIC ACID,
RIBOFLAVIN (VITAMIN B2),
VITAMIN B6, THIAMINE, FOLIC ACID,
BIOTIN, COPPER GLUCONATE,
VITAMIN D, AND VITAMIN B12.

10ml per day

EAN 13 CODE 8436582881362
INTERNAL CODE 210038
NATIONAL CODE in process



RESPULM

solution 250ml

10ml x 2 times per day

EAN 13 CODE 8436048047097
INTERNAL CODE 210032
NATIONAL CODE 175186.7



FRUCTOSE, HONEY, BROADLEAF PLANTIN, SAMBUCUS, SUNDEWS, THYMUS, ALOE VERA, GUMWEED, N-ACETYLL-CYSTEINE, GOLDEN SUN, PROPOLIS, ECHINACEA, PINE, EUCALYPTUS, VITAMIN C, MINT AND VITAMIN A.



CELUT

solution 250ml

FRUCTOSE, FOS GREEN COFFEE, ORANGE, HORSETAIL, ORTHOSIPHON, FUMARIA, ARTICHOKE, COUCH-GRASS, ELDER, FUCUS, GARCINIA CAMBOGIA, AND RADISH.

10ml x 3 times per day

EAN 13 CODE 8436048043686
INTERNAL CODE 210020
NATIONAL CODE 167158.5



DIGEST

solution 250ml

FRUCTOSE, CABBAGE, ALOE, VITAMIN C, RUTIN, FENNEL, FENUGREEK, ALFALFA, MINT, GINGER, DANDELION, LIQUORICE, VITAMIN B3, CINNAMON, VITAMIN B6, VITAMIN B2, VITAMIN B1, VITAMIN A AND VITAMIN B12.

10ml x 2 times per day

EAN 13 CODE 8436048043693
INTERNAL CODE 210021
NATIONAL CODE 167159.2



REL-AX KIDS

solution 180ml

10ml x 2 times per day

EAN 13 CODE 8436048043723
 INTERNAL CODE 210025
 NATIONAL CODE 167162.2

FRUCTOSE, HONEY, HUMULUS LUPULUS, MINT, L-PHENYLALANINE, HAWTHORN, MELISSA, ROSEMARY, OAT, VITAMIN C, L-TRYPTOPHAN, VALERIAN, GREEN ANISE, ORANGE BLOSSOM, ORANGE, CALIFORNIAN POPPY, VERBENA, VITAMIN E, MAGNESIUM GLUCONATE, VITAMIN B6, VITAMIN B1 AND VITAMIN B12.



RESPULM KIDS

solution 180ml

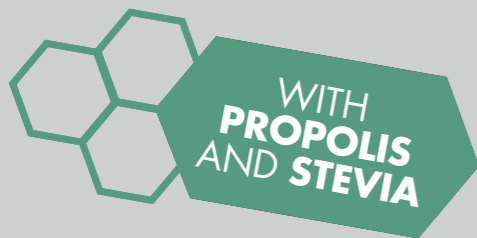
FRUCTOSE, HONEY, PLANTIN, MARSHMALLOW, ELDER, SUNDEW, THYME, ALOE, GRINDELIA, GOLDEN SUN, PROPOLIS, ECHINACEA, VITAMIN C, PINE, EUCALYPTUS MINT AND VITAMIN A.

3 to 6 year-old-children: 5ml 2 times per day
 6 year-old-children and older: 10ml 2 or 3 times per day



EAN 13 CODE 8436048043716
 INTERNAL CODE 210035
 NATIONAL CODE 175187.4





SUGAR
FREE



RESPIR SWEET

- 10 units of 3g bag
- 30 units of 3g bag
- 1kg bag in units of 3g

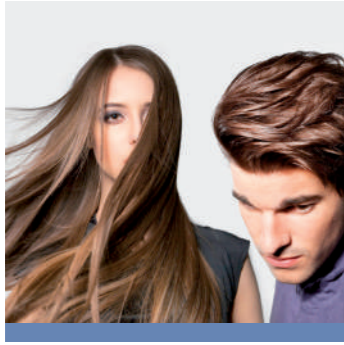
ISOMALT, ASCORBIC ACID,
PROPOLIS, HEDGE MUSTARD,
THYME, MENTHOL,
EUCALYPTUS AROMA AND STEVIA.



18 bags 30 sweets
+ 45 bags 10 sweets

EAN 13 CODE	bag 10 units 8436048044164	EAN 13 CODE	bag 30 units 8436048044454	EAN 13 CODE	bag 1Kg 8436048044515
INTERNAL CODE	305001	INTERNAL CODE	305003	INTERNAL CODE	305002





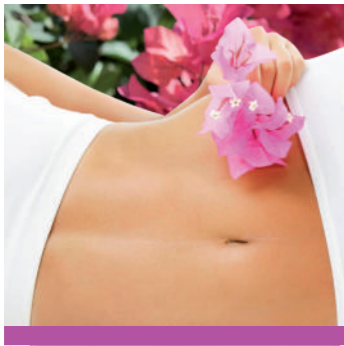
107
HAIR TREATMENT



113
SPECIFICS



123
FACIAL CLEANSING
& DETOXIFICATION



129
BODY CARE



135
ALOVE COSMETICS



141
HAND HYGIENE
& HAND CARE



145
HYDROALCOHOLIC
SANITIZERS

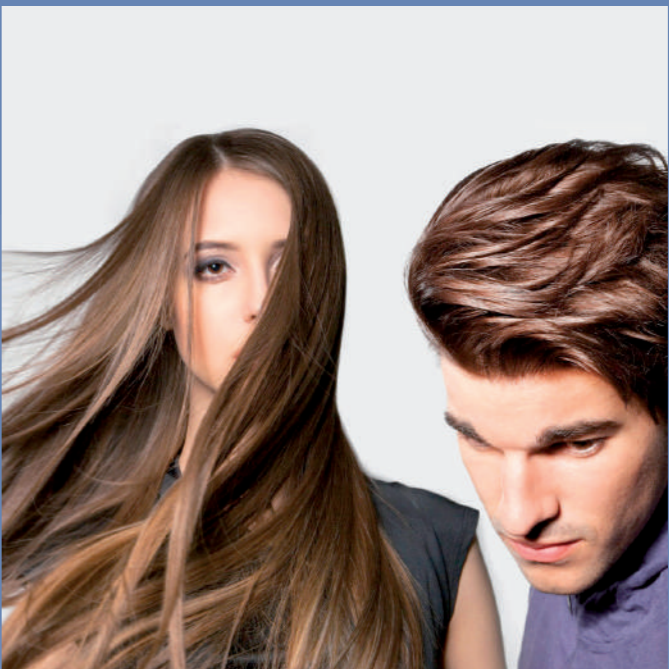


151
CUSTOMISED
COSMETICS BRANDS



COSMETICS BASED ON NATURAL INGREDIENTS

COSMETICS





HAIR 3.0 BUILDING FIBERS

28g

- KERATIN FIBERS
- MINERAL PIGMENTS

MEDIUM BROWN	C.EAN 13 INTERNAL CODE	8436048043501 123090
BLONDE	C. EAN 13 INTERNAL CODE	8436048043525 123092
MEDIUM BLONDE	C.EAN 13 INTERNAL CODE	8436048043532 123093
GREY	C.EAN 13 INTERNAL CODE	8436048043549 123094
DARK BROWN	C.EAN 13 INTERNAL CODE	8436048043495 123086



HAIR 3.0

30 capsules 953mg

- L-METHIONINE
- L-CYSTEINE
- L-CYSTEINE HCl
- GINKGO BILOBA
- PUMPKIN
- BREWER'S YEAST
- IRON
- ORGANIC SILICON
- SELENIUM
- ZINC
- COPPER
- GRAPE
- MILLET
- VITAMIN E
- VITAMINS GROUP B
- VITAMIN D
- BIOTIN

1 capsule per day

EAN 13 CODE	8436048043747
INTERNAL CODE	200655



HAIR 3.0 HAIR LOSS SHAMPOO

bottle 250ml

- PLACENTA EXTRACT
- ARNICA
- BURDOCK
- CRESS
- MARIGOLD
- NASTURTIUM
- IVY
- LEMON
- CHAMOMILE
- WHITE NETTLE
- PINE
- ROSEMARY
- HORSETAIL
- SAGE
- VITAMINS GROUP B
- KERATIN

daily use shampoo for all types of hair

EAN 13 CODE	8436048043792
INTERNAL CODE	123101



HAIR 3.0 FREQUENT USE SHAMPOO

dispenser 500ml

- BIOTIN
- PROVITAMIN B5
- KERATIN
- MARSH HORSETAIL EXTRACT
- HORSE CHESTNUT
- BREWER'S YEAST
- VITAMINS B GROUP
- GLYCOSAMINOGLYCANS

frequent use shampoo for all types of hair

EAN 13 CODE	8436582881690
INTERNAL CODE	139006



ONION SHAMPOO

bottle 250ml

- GLYCERIN
- ONION EXTRACT
- PROVITAMIN B5
- BREWER'S YEAST
- VITAMINS B GROUP
- BIOTIN

daily use shampoos for all types of hair

EAN 13 CODE
INTERNAL CODE

8436048048452
123109







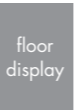
APITOX SPRAY

spray 100ml

- BEE VENOM (APITOXIN)
- HONEY EXTRACT
- ARNICA HYDROGLYCOLIC EXTRACT
- HARPAGOPHYTUM HYDROGLYCOLIC EXTRACT
- BOSWELLIA SERRATA
- METHYL SALICYLATE
- MENTHOL

APITOX CREAM

- BEE VENOM (APITOXIN)
- HONEY EXTRACT
- HARPAGOPHYTUM HYDROGLYCOLIC EXTRACT
- CHONDROITIN SULPHATE
- HYDROCHLORIDE GLUCOSAMINE
- METHYL SALICYLATE
- MENTHOL



EAN 13 CODE 8437010199356
INTERNAL CODE 139004
NATIONAL CODE 187145.9

EAN 13 CODE 8436048044027
INTERNAL CODE 212103
NATIONAL CODE 100284

8436048043167
100284
168293.2

10 sachets

tube 100ml



CANNABI CREAM

tube 60ml

- CBD CRYSTALS (CANNABIDIOL)
- HEMP SEED OIL
- CUSTARD APPLE EXTRACT
- ARNICA EXTRACT
- BOSWELLIA EXTRACT



EAN 13 CODE 8436582881454
INTERNAL CODE 146007
NATIONAL CODE in process



SYN-AKE ANTIAGING TREATMENT CREAM SERUM

jar 50ml

- SYN-AKE
- ALOE VERA
- GLYCERIN
- ROSEHIP OIL
- BEE WAX
- CAROB

airless 30ml

- VITAMINS A, C AND E
- ALLANTOIN
- HYDROLYSED COLLAGEN
- HYALURONIC ACID
- CHONDROITIN SULPHATE



EAN 13 CODE 8437008988122
INTERNAL CODE 100311
NATIONAL CODE 156316.3

EAN 13 CODE 8437008988153
INTERNAL CODE 100312
NATIONAL CODE 156314.9

EAN 13 CODE 8436048047479
INTERNAL CODE 100216

APITOX FACIAL CREAM

jar 50ml

- BEE VENOM (APITOXIN)
- ALOE VERA
- HYDROLYSED COLLAGEN
- HYALURONIC ACID
- PANTHENOL
- INOSITOL
- BIOTIN
- GLYCERIN

SNAIL SLIME 24 HOURS CREAM. FACIAL

airless 100ml

- SNAIL SLIME
- ALOE VERA
- GLYCERIN
- DIMETHICONE

- ROSEHIP OIL
- BEE WAX
- ALLANTOIN
- HYDROLYSED COLLAGEN

- GLYCOLIC ACID
- VITAMINS A, C AND E



EAN 13 CODE 8437006168755
INTERNAL CODE 100195





COLAGEN PLUS. CREAM | FACIAL SERUM

regenerative cream airless 50ml

- HYDROLYSED COLLAGEN
- HYALURONIC ACID
- ORGANIC SILICON
- VITIS VINIFERA
- AÇAÍ
- ALOE VERA
- ADENOSINE
- STEM CELLS
- GABA

serum dropper 30ml

- HYDROLYSED COLLAGEN
- HYALURONIC ACID
- ORGANIC SILICON
- VITIS VINIFERA
- VITAMIN C (cell-renewing complex)



DERMATOLOGICALLY TESTED



DERMATOLOGICALLY TESTED



EAN 13 CODE
INTERNAL CODE
NATIONAL CODE

8436048048094
146005
160882.6

EAN 13 CODE
INTERNAL CODE

8436048048087
146006



DERMO REGENERATIVE CREAM
BODY & FACIAL

jar 50ml

- BEE WAX
- OLIVE OIL
- SHEA BUTTER
- AGAR AND FUCUS
- CALAGUALA
- GLYCERIN
- SNAIL SLIME
- CALENDULA
- MIMOSA
- LAMINARIA
- WALNUT

DERMO REGENERATIVE HAIR LOTION

spray 50ml

- LACTIC COMPLEX (LACTATE)
- LAMINARIA
- WALNUT
- CALAGUALA FERN
- TEPEZCOHUIE
- PLACENTA EXTRACT
- NIACINAMIDE



EAN 13 CODE 8437008988139
INTERNAL CODE 100304
NATIONAL CODE 158342.0



EAN 13 CODE 8436048048865
INTERNAL CODE 105030



BB CREAM

airless 50ml

- HYALURONIC ACID
- POMEGRANATE
- ALLANTOIN
- VITAMIN E



	natural shade	medium shade
EAN 13 CODE	8436048043822	8436048043839
INTERNAL CODE	100314	100315





FACIAL MASK
GOLD POWDER

- 60g
- HAMAMELIS
 - GLYCERIN
 - HYDROLYSED MARINE COLLAGEN
 - GOLD POWDER
 - HYALURONIC ACID
 - ASCORBIC ACID
 - SODIUM PCA



EAN 13 CODE 8436048043051
INTERNAL CODE 140029

NECK MASK
GOLD POWDER

- 35g
- HAMAMELIS
 - HYDROLYZED MARINE COLLAGEN
 - GOLD POWDER
 - HYALURONIC ACID
 - AMERICAN GINSENG
 - ROSEMARY
 - ASCORBIC ACID
 - SODIUM PCA

EAN 13 CODE 8436048043068
INTERNAL CODE 140030

ENERGISING FACIAL MASK
ICE EFFECT

- 30g
- GLYCERIN
 - AZELAIC ACID
 - COLLAGEN
 - ALLANTOIN
 - TOCOPHEROL
 - HYALURONIC ACID



EAN 13 CODE 8436048043099
INTERNAL CODE 140033

DETOX FACIAL MASK

facial, neck and neckline

sachet 25ml



DERMATOLOGICALLY TESTED

50 sachets

EAN 13 CODE 8437010199318
EAN 14 CODE 98437010199311
INTERNAL CODE 100416

- WHITE CLAY
- AMMONIUM GLYCYRRHIZINATE
- RICE STARCH
- NATURAL BENTONITE
- AFFIPORE™



**MICELLAR
WATER**
CLEANSING

spray 250ml

- THERMAL WATER
from the Baths of Salies-de-Bearn
- GLYCERIN
- ORCHID EXTRACT
- SODIUM PCA
- POTASSIUM SORBATE

**ROSE WATER
TONIC**
BODY & FACE

spray 250ml

- ROSA CENTIFOLIA

**FACIAL
CLEANSING FOAM**

spray foam 150ml

- GLYCERIN
- HYALURONIC ACID
high molecular weight
- ASCORBYL GLUCOSIDE
- CITRIC ACID
- LACTIC ACID
- SURFACTANTS

with a simple gesture in your daily routine



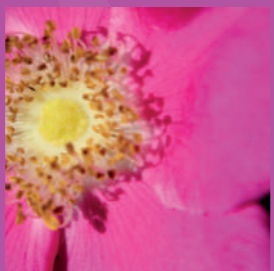
12
sprays



EAN 13 CODE 8436048043174
INTERNAL CODE 113036

EAN 13 CODE 8436048040302
INTERNAL CODE 101096

EAN 13 CODE 8436048048896
INTERNAL CODE 113043
NATIONAL CODE 179858.9





TRADITIONAL SOAP
WITH ALOE VERA CORE

100g

- COCONUT OIL
- OLIVE OIL
- ALOE VERA



EAN 13 CODE 8436048040319
INTERNAL CODE 116090

GEL ALOE VERA
+ROSE HIP + TEA TREE

dispenser 500ml

- ALOE VERA
- ROSEHIP OIL
- VITAMIN B8
- PANTHENOL (PROVITAMIN B5)
- TEA TREE OIL



EAN 13 CODE 8437006168526
INTERNAL CODE 100307

REDUPLUS FORTE

tube 200ml

- CORALLINE RED ALGAE EXTRACT
- CAFFEINE
- CARNITINE
- ORGANIC RED VINE EXTRACT
- GLYCERIN



EAN 13 CODE 8436048044171
INTERNAL CODE 100360



TONING GEL FOR LEGS

Refreshes and tones



DERMATOLOGICALLY TESTED



12 tubes

EAN 13 CODE 8437010199097
INTERNAL CODE 100410

- MENTHOL tube 100ml
- KELP SEAWEED
- FUCUS
- HORSE CHESTNUT
- GOLDENROD
- LEMON
- BUTCHER'S BROOM





ARGAN OIL

spray 50ml

- ARGAN OIL
- LIPIDS
- VITAMIN E
- BETA-CAROTENE

ROSEHIP OIL

spray 50ml

- ROSEHIP OIL
- LIPIDS
- VITAMIN E
- BETA-CAROTENE

TEA TREE OIL

spray 50ml

- TEA TREE OIL
- LIPIDS
- VITAMIN E
- BETA-CAROTENE



21
7x3 sprays

EAN 13 CODE 8436048047509
INTERNAL CODE 101005
NATIONAL CODE 162472.7

EAN 13 CODE 8436048047516
INTERNAL CODE 101002
NATIONAL CODE 162470.3

EAN 13 CODE 8436048047493
INTERNAL CODE 101003
NATIONAL CODE 162471.0



ALMOND OIL

- ALMOND OIL
- ROSEHIP OIL

bottle 250ml / 500ml / 1000ml



	1000ml	500ml	250ml
EAN 13 CODE	8437006168557	8437006168540	8437006168533
INTERNAL CODE	101089	101092	101091
NATIONAL CODE	162468.0		162467.3





FACIAL CLEANSING GEL WITHOUT SOAP



dispenser 250ml

- DRY SKIN
- AQUASANA® pure olive fruit water
 - CERTIFIED ALOE VERA
 - VITAMIN PP
 - HYALURONIC ACID
 - OLEASAN®



EAN 13 CODE 8436048045536
INTERNAL CODE 600002
NATIONAL CODE 171392.6

CLEANING+ NATURAL CLEANSING OIL



dispenser 150ml

- EVERY TYPE OF SKIN
- OLEASTER® Olive Premium elixir
 - ROSEMARY ESSENTIAL OIL
 - BETA-SITOSTEROL



EAN 13 CODE 8436048045529
INTERNAL CODE 600001
NATIONAL CODE 171391.9

CLEANING+ CLEANSING MICELLAR SAGE



dispenser 250ml/500ml

- EVERY TYPE OF SKIN
- AQUASANA® pure olive fruit water
 - CERTIFIED ALOE VERA
 - HYALURONIC ACID
 - OLEASAN®



EAN 13 CODE 8436048045550
INTERNAL CODE 600005
NATIONAL CODE 171394.0

CLEANING+ FACIAL PEEL



tube 100ml

- EVERY TYPE OF SKIN
- AQUASANA® pure olive fruit water
 - OLEASAN®
 - XYLITOL
 - NATURAL AND BIODEGRADABLE EXFOLIATING OLIVE PARTICLES
 - LIGHT SURFACTANTS



EAN 13 CODE 8436048045840
INTERNAL CODE 600006
NATIONAL CODE 172034.4



HIDRALOVE EYE CONTOUR

airless 15ml
EVERY TYPE OF SKIN

- AQUASANA® pure olive fruit water
- HYALURONIC ACID
- OLEASAN®
- BEAUTIFEYE™



EAN 13 CODE 8436048045871
INTERNAL CODE 601004
NATIONAL CODE 172035.1

HIDRASENSE MOISTURISING AND ANTIOXIDANT EMULSION

tube 50ML
DRY SKIN

- AQUASANA® pure olive fruit water
- OLEASAN®
- OLEASTER®
- WIDE-SPECTRUM SUNSCREEN
- VITAMIN PP



EAN 13 CODE 8436048045864
INTERNAL CODE 601003
NATIONAL CODE 172037.5



SPECIFICS ANTI-PIGMENT SERUM

tube 30ml
SKINS WITH SPOTS

- AQUASANA® pure olive fruit water
- SYNERLIGHT 2
- NIACINAMIDA
- VITAMIN C
- AHA'S
- OLEASAN®
- ARBUTIN



EAN 13 CODE 8436048045918
INTERNAL CODE 603002
NATIONAL CODE 174740.2

SPECIFICS DERMA XTREM

airless 50ml
REACTIVE/VERY REACTIVE SKIN

- AQUASANA® pure olive fruit water
- OLEASAN®
- OLEASTER®
- KELP SEAWEED
- SQUALENE
- MIMOSA EXTRACT
- FERN EXTRACT
- WALNUT EXTRACT



EAN 13 CODE 8436048045925
INTERNAL CODE 603000
NATIONAL CODE 176682.3

ULTIM-AGE TOTAL CREAM

airless 50ml
ANTIAGING TREATMENT

- AQUASANA® pure olive fruit water
- CERTIFIED ALOE VERA
- OLEASAN®
- OLEASTER®
- VITAMIN PP
- SUNSCREENS



EAN 13 CODE 8436048045888
INTERNAL CODE 602002
NATIONAL CODE 172038.2





HYDROALCOHOLIC SANITIZER GEL. WITH ALOE VERA

bottle 75ml

- ALCOHOL
- GLICERIN
- ALOE VERA



79
units

EAN 13 CODE
INTERNAL CODE

8436582881416
146011

MULTIFUNCTIONAL HAND & NAIL CREAM

tube 50ml

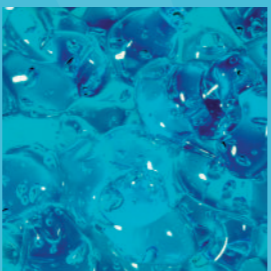
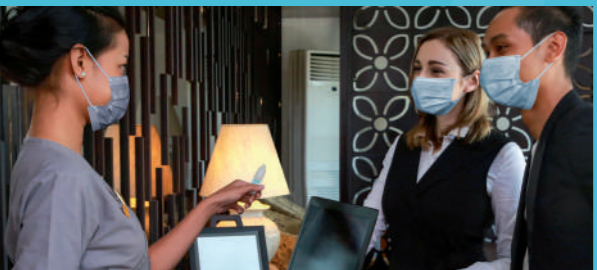
- GLYCERIN
- VAS / VAVS
- FUCOGEL
- ALOE VERA
- SHEA BUTTER
- UREA
- HYDROLYSED
COLLAGEN
- MARIGOLD
- ETHYLHEXYL OLIVATE
- VITAMIN E



12
units

EAN 13 CODE
INTERNAL CODE

8436582881546
146025





5000ml

HYDROALCOHOLIC SANITIZING SOLUTION

multiple formats. CHECK AVAILABILITY

- ALCOHOL
- ALOE VERA

 **ALOE**  **LEMON FRESH**



bottle 75ml
bottle 500ml
carafe 5000ml

EAN 13 CODE: 8436582881584. INTERNAL CODE: 146026
EAN 13 CODE: 8436582881621. INTERNAL CODE: 146029
EAN 13 CODE: 8436582881614. INTERNAL CODE: 146031



75ml 100ml 300ml 500ml 1000ml 5000ml

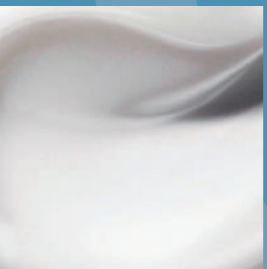
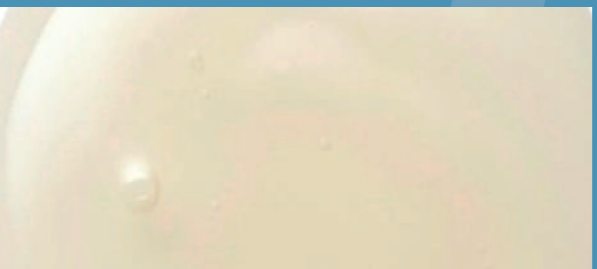
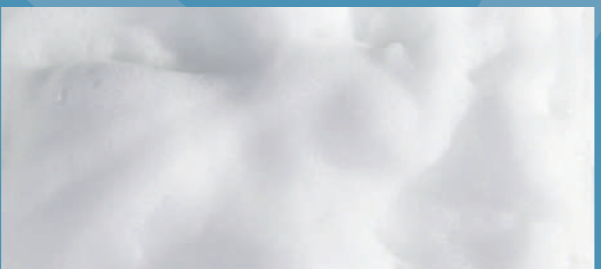
HYDROALCOHOLIC SANITIZING GEL. WITH ALOE VERA

multiple formats. CHECK AVAILABILITY

- ALCOHOL
- GLICERIN
- ALOE VERA



bottle 75ml	EAN 13 CODE: 8436582881416. INTERNAL CODE: 146011.
bottle 100ml	EAN 13 CODE: 8436582881553. INTERNAL CODE: 146016. C.N: 199131.7
bottle 300ml	EAN 13 CODE: 8436582881423. INTERNAL CODE: 146012. C.N: 199132.4
bottle 500ml	EAN 13 CODE: 8436582881492. INTERNAL CODE: 146015. C.N: 199134.8
bottle 1000ml	EAN 13 CODE: 8436582881560. INTERNAL CODE: 146017.
carafe 5000ml	EAN 13 CODE: 8436582881447. INTERNAL CODE: 146014.





WE OFFER YOU YOUR OWN COSMETICS BRAND

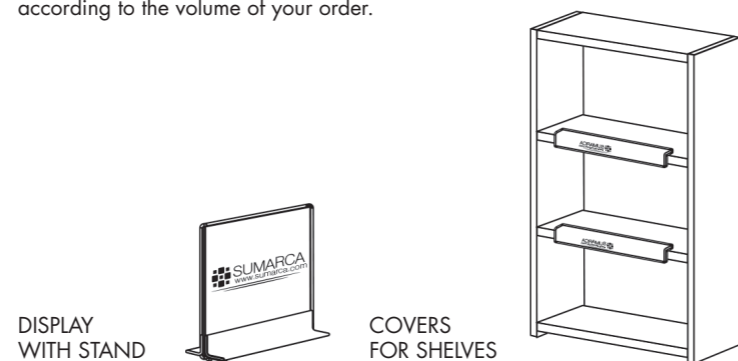
- By having your own brand, you could get a better market position and secure customer loyalty, offering a better value for money. This would make you different from the other companies.
- We customise products by adding your corporate image to the labels of our containers. We do that in an attractive way so the result is a unique cosmetics line, different from the others
- We also give support by customising the merchandising so your corporate image would be more visible.
- Our excellence quality together with our competitive prices would make your brand highly profitable for you and affordable for your customers.

BLANK TO BE FILLED WITH THE NAME OR YOUR COMPANY



There is a blank in each label to be filled with the name of your company or brand.

We also offer you some customisable POS display products, according to the volume of your order.



FACIAL LINE

- | | |
|--------------------------------|------------------------------------|
| CLEANSING MICELLAR SAGE FACIAL | ANTI-WRINKLE TRIPLE EFFECT CREAM |
| CLEANSING FOAM | ANTI-WRINKLE SERUM TRIPLE EFFECT |
| COLLAGEN CREAM AND STEM CELLS | SEBO-REGULATING MOISTURIZING CREAM |
| HYDROLYSED COLLAGEN SERUM | HYDRO-NUTRITIVE NIGHT CREAM |
| EYE CONTOUR TOTAL ACTION | MINERAL BB CREAM |
| | HIGHLIGHTER SERUM GOLD |

HAIR LINE

- FREQUENT USE SHAMPOOS
- ONION SHAMPOO WITH COCONUT AROMA
- HAIR LOSS SHAMPOO
- NUTRITIVE AND RESTORATIVE HAIR MASK

BODY LINE

- ALOE VERA, ROSEHIP AND TEA TREE GEL
- ANTI-CELLULITE GEL
- BODY MASSAGE CREAM
- MULTIFUNCTIONAL HAND & NAIL CREAM
- TONING GEL FOR LEGS

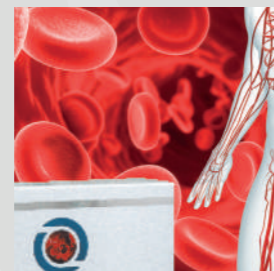


100ml 3.38 FL. OZ.
Prisma Natural

APITOXINA, GLUCOSAMINA, CONDROITINA, HARPAGOFITIN, e INGREDIENTES ACTIVOS

SOLUCIÓN en crema
efecto frío y rápida absorción

Indicado también para antes y después del ejercicio



CYSTU BALANCE
MANOSANO BOLD & DAMNOSA
Prisma Natural

100mg
20 unidades

-40% de las mujeres prefieren



TABLETOP AND SHOP WINDOW DISPLAY. 24 x 47 x 14 cm
GENERIC
CHOOSE YOUR OWN COMPOSITION



TABLETOP AND SHOP WINDOW DISPLAY. 24 x 47 x 14 cm
DERMACTIV LINE

- COMPOSITION
- 4 Cleaning. 250ml
 - 12 Eyebrows & eyelashes serum treatment. 5ml
 - 2 Skinseb Control. 100ml
 - 2 Psora Control. 100ml
 - 4 Kayma Care. 100ml
 - 3 Skinseb Control. 60 capsules
 - 3 Inmunosun. 30 capsules



TABLETOP AND SHOP WINDOW DISPLAY. 24 x 47 x 14 cm
URACTIV LINE

COMPOSITION

option 1

9 Maxcontrol. 30 capsules

9 Hiperprost. 30 capsules

option 2

6 Hiperprost. 30 capsules

6 Maxcontrol. 30 capsules

6 Spermforte. 60 capsules

option 3

2 Eryplus. 30 sticks

6 Hiperprost. 30 capsules

3 Maxcontrol. 30 capsules

3 Spermforte. 60 capsules



TABLETOP AND SHOP WINDOW DISPLAY. 24 x 47 x 14 cm
GET READY (WEIGHT CONTROL) / NERVOUS SYSTEM. & SLEEP

COMPOSITION

2 Adipo Block Depur. Solution 500ml

1 Raspberry Ketone. Solution 500ml

6 Adipo Block Burner. 60 capsules

2 Celut. 14 sticks

2 Dren Slim. 14 sticks

18 Melato+. 30 capsules

10 Triptophan+Mg+Melatonin+vitamins. 60 tablets

12 Antistress spray. 15ml

6 Perfil Ansionat. 30 capsules



TABLETOP AND SHOP WINDOW DISPLAY. 24 x 47 x 14 cm IMMUNE SYSTEM

COMPOSITION

option 1

- 4 Inmudfen adults. 200ml
- 4 Inmudfen kids. 200ml
- 9 Vitamin D3. 60 capsules
- 6 Vitamin C. 60 capsules
- 6 Inmuprotec. 30 chew tabs

option 2

- 4 Inmudfen adults. 200ml
- 4 Inmudfen kids. 200ml
- 2 Vitamin C. 60 capsules
- 3 Plant BB Kids. 20 vials
- 3 Vitamin D. 60 capsules
- 3 Plant Biotic Inmu-Defen. 20 vials

option 3

- 9 Resfarín spray. 50ml
- 2 Inmudfen adults. 200ml
- 2 Inmudfen kids. 200ml
- 2 Vitamin C. 60 capsules
- 3 Plant BB Kids. 20 vials
- 3 Vitamin D. 60 capsules
- 3 Plant Biotic Inmu-Defen. 20 vials

option 4

- 4 Inmudfen adults. 200ml
- 4 Inmudfen kids. 200ml
- 9 Vitamin D3. 60 capsules
- 3 Inmuneforte. 30 capsules
- 6 Vitamin C. 60 capsules
- 3 Inmuprotec. 30 chewable tablets

option 5

- 4 Inmudfen adults. 200ml
- 4 Inmudfen kids. 200ml
- 4 Vitamin C. 60 capsules
- 6 Vitamin D3. 60 capsules
- 3 Inmuneforte. 30 capsules
- 3 Inmuprotec. 30 chewable tablets
- 6 Resfarín. 50ml



TABLETOP AND SHOP WINDOW DISPLAY. 24 x 47 x 14 cm
HYDROALCOHOLIC GEL 75ML (pocket size)

COMPOSITION
2 boxes x 40 units each. 75ml



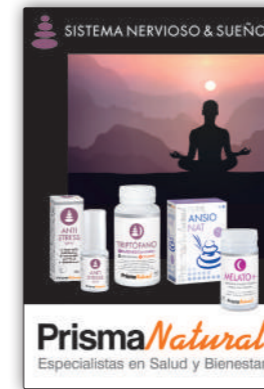
COUNTER
DISPLAYS

18 x 25 x 7 cm



FLOOR OR SHOP WINDOW DISPLAYS

44 x 64 cm



STOPPERS
12 x 12 cm



SHOP WINDOW VINYL
30 x 30 cm
40 x 40 cm



COVERS FOR SHELVES
60 cm



CLOTH BAG
38 x 38 x 12 cm
PAPER BAG
22 x 26 x 10 cm



TOTEMS
60 x 190 cm



www.gruponuevadietetica.com
www.prismanatural.es
+34 954 35 41 41





NUEVA DIETÉTICA GRUPO

NUEVA DIETÉTICA S.L.
Pol. Industrial Espaldillas
C. Espaldillas Diez, 26-28
Alcalá de Guadaíra, Seville
SPAIN - E.E.

tel. +34 954 35 41 41
fax +34 954 36 60 50

info@gruponuevadietetica.com

www.gruponuevadietetica.com
www.bestmedicaldiet.com
www.prismanatural.es

