

World Journal of *Gastrointestinal Surgery*

World J Gastrointest Surg 2023 August 27; 15(8): 1559-1840



MINIREVIEWS

- 1559 Impact of tumour rupture risk on the oncological rationale for the surgical treatment choice of gastrointestinal stromal tumours
Peparini N
- 1564 Prevention and treatment of hepatic encephalopathy during the perioperative period of transjugular intrahepatic portosystemic shunt
Wang LJ, Yao X, Qi Q, Qin JP
- 1574 Vascular complications of chronic pancreatitis and its management
Walia D, Saraya A, Gunjan D
- 1591 Historical changes in surgical strategy and complication management for hepatic cystic echinococcosis
A JD, Chai JP, Jia SL, A XR

ORIGINAL ARTICLE**Basic Study**

- 1600 High spindle and kinetochore-associated complex subunit-3 expression predicts poor prognosis and correlates with adverse immune infiltration in hepatocellular carcinoma
Zheng LL, Wang YR, Liu ZR, Wang ZH, Tao CC, Xiao YG, Zhang K, Wu AK, Li HY, Wu JX, Xiao T, Rong WQ

Case Control Study

- 1615 Post-transplant biliary complications using liver grafts from deceased donors older than 70 years: Retrospective case-control study
Jimenez-Romero C, Justo-Alonso I, del Pozo-Elso P, Marcacuzco-Quinto A, Martín-Arriscado-Arroba C, Manrique-Municio A, Calvo-Pulido J, García-Sesma A, San Román R, Caso-Maestro O

- 1629 Goldilocks principle of minimally invasive surgery for gastric subepithelial tumors
Chang WJ, Tsao LC, Yen HH, Yang CW, Chang HC, Kor CT, Wu SC, Lin KH

Retrospective Cohort Study

- 1641 Prognosis after splenectomy plus pericardial devascularization *vs* transjugular intrahepatic portosystemic shunt for esophagogastric variceal bleeding
Qi WL, Wen J, Wen TF, Peng W, Zhang XY, Shen JY, Li X, Li C
- 1652 Initial suction drainage decreases severe postoperative complications after pancreatic trauma: A cohort study
Li KW, Wang K, Hu YP, Yang C, Deng YX, Wang XY, Liu YX, Li WQ, Ding WW

Retrospective Study

- 1663** Radiation therapy prior to a pancreaticoduodenectomy for adenocarcinoma is associated with longer operative times and higher blood loss
Aploks K, Kim M, Stroever S, Ostapenko A, Sim YB, Sooriyakumar A, Rahimi-Ardabily A, Seshadri R, Dong XD
- 1673** Prognostic significance of preoperative lymphocyte to monocyte ratio in patients with signet ring gastric cancer
Liu HL, Feng X, Tang MM, Zhou HY, Peng H, Ge J, Liu T
- 1684** Clinical efficacy of total laparoscopic splenectomy for portal hypertension and its influence on hepatic hemodynamics and liver function
Qi RZ, Li ZW, Chang ZY, Chang WH, Zhao WL, Pang C, Zhang Y, Hu XL, Liang F
- 1693** Accurate resection of hilar cholangiocarcinoma using eOrganmap 3D reconstruction and full quantization technique
Cui DP, Fan S, Guo YX, Zhao QW, Qiao YX, Fei JD
- 1703** Regional differences in islet amyloid deposition in the residual pancreas with new-onset diabetes secondary to pancreatic ductal adenocarcinoma
Wang R, Liu Y, Liang Y, Zhou L, Chen MJ, Liu XB, Tan CL, Chen YH
- 1712** Risk factors and their interactive effects on severe acute pancreatitis complicated with acute gastrointestinal injury
Chen JH, Zhang MF, Du WC, Zhang YA
- 1719** Effects of ultrasound monitoring of gastric residual volume on feeding complications, caloric intake and prognosis of patients with severe mechanical ventilation
Xu XY, Xue HP, Yuan MJ, Jin YR, Huang CX
- 1728** Enhanced recovery nursing and mental health education on postoperative recovery and mental health of laparoscopic liver resection
Li DX, Ye W, Yang YL, Zhang L, Qian XJ, Jiang PH
- 1739** Changing trends in gastric and colorectal cancer among surgical patients over 85 years old: A multicenter retrospective study, 2001–2021
Chen K, Li M, Xu R, Zheng PP, Chen MD, Zhu L, Wang WB, Wang ZG

Observational Study

- 1751** Knowledge, attitude, and practice of monitoring early gastric cancer after endoscopic submucosal dissection
Yang XY, Wang C, Hong YP, Zhu TT, Qian LJ, Hu YB, Teng LH, Ding J
- 1761** Anti-reflux effects of a novel esophagogastric asymmetric anastomosis technique after laparoscopic proximal gastrectomy
Pang LQ, Zhang J, Shi F, Pang C, Zhang CW, Liu YL, Zhao Y, Qian Y, Li XW, Kong D, Wu SN, Zhou JF, Xie CX, Chen S
- 1774** Prognostic scores in primary biliary cholangitis patients with advanced disease
Feng J, Xu JM, Fu HY, Xie N, Bao WM, Tang YM

SYSTEMATIC REVIEWS

- 1784 Maternal choledochal cysts in pregnancy: A systematic review of case reports and case series
Augustin G, Romic I, Miličić I, Mikuš M, Herman M
- 1799 Intraoperative pancreas stump perfusion assessment during pancreaticoduodenectomy: A systematic scoping review
Robertson FP, Spiers HVM, Lim WB, Loveday B, Roberts K, Pandanaboyana S
- 1808 Comparison between upfront surgery and neoadjuvant chemotherapy in patients with locally advanced gastric cancer: A systematic review
Fiflis S, Papakonstantinou M, Giakoustidis A, Christodoulidis G, Louri E, Papadopoulos VN, Giakoustidis D

CASE REPORT

- 1819 Long-term survival of patients with hepatocellular carcinoma with hepatic, pulmonary, peritoneal and rare colon metastasis: A case report
Gong YQ, Lu TL, Chen CW
- 1825 Donor hepatic artery reconstruction based on human embryology: A case report
Zhang HZ, Lu JH, Shi ZY, Guo YR, Shao WH, Meng FX, Zhang R, Zhang AH, Xu J
- 1831 Outpatient hybrid endoscopic submucosal dissection with SOUTEN for early gastric cancer, followed by endoscopic suturing of the mucosal defect: A case report
Ito R, Miwa K, Matano Y

LETTER TO THE EDITOR

- 1838 Is endoscopic mucosal resection-precutting superior to conventional methods for removing sessile colorectal polyps?
Yang QY, Zhao Q, Hu JW

ABOUT COVER

Editorial Board Member of *World Journal of Gastrointestinal Surgery*, Raja Kalayarasan, MS, DNB, MCh, FRCS (Ed), Additional Professor & Head, Department of Surgical Gastroenterology, Jawaharlal Institute of Postgraduate Medical Education and Research (JIPMER), Puducherry 605006, India. kalayarasanraja@yahoo.com

AIMS AND SCOPE

The primary aim of *World Journal of Gastrointestinal Surgery* (*WJGS, World J Gastrointest Surg*) is to provide scholars and readers from various fields of gastrointestinal surgery with a platform to publish high-quality basic and clinical research articles and communicate their research findings online.

WJGS mainly publishes articles reporting research results and findings obtained in the field of gastrointestinal surgery and covering a wide range of topics including biliary tract surgical procedures, biliopancreatic diversion, colectomy, esophagectomy, esophagostomy, pancreas transplantation, and pancreatectomy, *etc.*

INDEXING/ABSTRACTING

The *WJGS* is now abstracted and indexed in Science Citation Index Expanded (SCIE, also known as SciSearch®), Current Contents/Clinical Medicine, Journal Citation Reports/Science Edition, PubMed, PubMed Central, Reference Citation Analysis, China National Knowledge Infrastructure, China Science and Technology Journal Database, and Superstar Journals Database. The 2023 Edition of Journal Citation Reports® cites the 2022 impact factor (IF) for *WJGS* as 2.0; IF without journal self cites: 1.9; 5-year IF: 2.2; Journal Citation Indicator: 0.52; Ranking: 113 among 212 journals in surgery; Quartile category: Q3; Ranking: 81 among 93 journals in gastroenterology and hepatology; and Quartile category: Q4.

RESPONSIBLE EDITORS FOR THIS ISSUE

Production Editor: Rui-Rui Wu, Production Department Director: Xiang Li; Editorial Office Director: Jia-Ru Fan.

NAME OF JOURNAL

World Journal of Gastrointestinal Surgery

ISSN

ISSN 1948-9366 (online)

LAUNCH DATE

November 30, 2009

FREQUENCY

Monthly

EDITORS-IN-CHIEF

Peter Schemmer

EDITORIAL BOARD MEMBERS

<https://www.wjgnet.com/1948-9366/editorialboard.htm>

PUBLICATION DATE

August 27, 2023

COPYRIGHT

© 2023 Baishideng Publishing Group Inc

INSTRUCTIONS TO AUTHORS

<https://www.wjgnet.com/bpg/gerinfo/204>

GUIDELINES FOR ETHICS DOCUMENTS

<https://www.wjgnet.com/bpg/GerInfo/287>

GUIDELINES FOR NON-NATIVE SPEAKERS OF ENGLISH

<https://www.wjgnet.com/bpg/gerinfo/240>

PUBLICATION ETHICS

<https://www.wjgnet.com/bpg/GerInfo/288>

PUBLICATION MISCONDUCT

<https://www.wjgnet.com/bpg/gerinfo/208>

ARTICLE PROCESSING CHARGE

<https://www.wjgnet.com/bpg/gerinfo/242>

STEPS FOR SUBMITTING MANUSCRIPTS

<https://www.wjgnet.com/bpg/GerInfo/239>

ONLINE SUBMISSION

<https://www.f6publishing.com>



Observational Study

Anti-reflux effects of a novel esophagogastric asymmetric anastomosis technique after laparoscopic proximal gastrectomy

Li-Qun Pang, Jie Zhang, Fang Shi, Cong Pang, Cheng-Wan Zhang, Ye-Liu Liu, Yao Zhao, Yan Qian, Xiang-Wei Li, Dan Kong, Shang-Nong Wu, Jing-Fang Zhou, Cong-Xue Xie, Song Chen

Specialty type: Gastroenterology and hepatology

Provenance and peer review:

Unsolicited article; Externally peer reviewed.

Peer-review model: Single blind

Peer-review report's scientific quality classification

Grade A (Excellent): 0
Grade B (Very good): 0
Grade C (Good): C, C
Grade D (Fair): 0
Grade E (Poor): 0

P-Reviewer: Shida A, Japan;
Viswanath YK, United Kingdom

Received: March 5, 2023

Peer-review started: March 5, 2023

First decision: April 13, 2023

Revised: May 2, 2023

Accepted: June 19, 2023

Article in press: June 19, 2023

Published online: August 27, 2023



Li-Qun Pang, Jie Zhang, Ye-Liu Liu, Yao Zhao, Yan Qian, Xiang-Wei Li, Cong-Xue Xie, Department of General Surgery, The Affiliated Huaian No. 1 People's Hospital of Nanjing Medical University, Huaian 223300, Jiangsu Province, China

Fang Shi, Jiangsu Key Laboratory of Advanced Manufacturing Technology, Huaiyin Institute of Technology, Huaian 223300, Jiangsu Province, China

Cong Pang, Department of Neurosurgery, The Affiliated Huaian No. 1 People's Hospital of Nanjing Medical University, Huaian 223300, Jiangsu Province, China

Cheng-Wan Zhang, Department of Central Laboratory, The Affiliated Huaian No. 1 People's Hospital of Nanjing Medical University, Huaian 223300, Jiangsu Province, China

Dan Kong, Department of Imaging, The Affiliated Huaian No. 1 People's Hospital of Nanjing Medical University, Huaian 223300, Jiangsu Province, China

Shang-Nong Wu, Jing-Fang Zhou, Department of Gastroenterology, The Affiliated Huaian No. 1 People's Hospital of Nanjing Medical University, Huaian 223300, Jiangsu Province, China

Song Chen, Institute of Medicinal Biotechnology, Jiangsu College of Nursing, Huaian 223300, Jiangsu Province, China

Corresponding author: Li-Qun Pang, MD, PhD, Chief Physician, Surgeon, Surgical Oncologist, Department of General Surgery, The Affiliated Huaian No. 1 People's Hospital of Nanjing Medical University, No. 1 Huanghe West Road, Huaian 223300, Jiangsu Province, China. hayypanglq@njmu.edu.cn

Abstract

BACKGROUND

Reflux esophagitis is a common postoperative complication of proximal gastrectomy. There is an urgent need for a safer method of performing esophageal-gastric anastomosis that reduces the risk of reflux after proximal gastrectomy. We hypothesize that a novel technique termed esophagogastric asymmetric anastomosis (EGAA) can prevent postoperative reflux in a safe and feasible manner.

AIM

To observe a novel method of EGAA to prevent postoperative reflux.

METHODS

Initially, we employed a thermal stress computer to simulate and analyze gastric peristalsis at the site of an esophagogastric asymmetric anastomosis. This was done in order to better understand the anti-reflux function and mechanism. Next, we performed digestive tract reconstruction using the EGAA technique in 13 patients who had undergone laparoscopic proximal gastrectomy. Post-surgery, we monitored the structure and function of the reconstruction through imaging exams and gastroscopy. Finally, the patients were followed up to assess the efficacy of the anti-reflux effects.

RESULTS

Our simulation experiments have demonstrated that the clockwise contraction caused by gastric peristalsis and the expansion of the gastric fundus caused by the increase of intragastric pressure could significantly tighten the anastomotic stoma, providing a means to prevent the reverse flow of gastric fluids. Thirteen patients with esophagogastric junction tumors underwent laparoscopic proximal gastrectomy, with a mean operation time of 304.2 ± 44.3 min. After the operation, the upper gastroenterography in supine/low head positions showed that eight patients exhibited no gastroesophageal reflux, three had mild reflux, and two had obvious reflux. The abdominal computed tomography examination showed a valve-like structure at the anastomosis. During follow-up, gastroscopy revealed a closed valve-like form at the anastomosis site without stenosis or signs of reflux esophagitis in 11 patients. Only two patients showed gastroesophageal reflux symptoms and mild reflux esophagitis and were treated with proton pump inhibitor therapy.

CONCLUSION

EGAA is a feasible and safe surgical method, with an excellent anti-reflux effect after proximal gastrectomy.

Key Words: Esophagogastric junction tumor; Proximal gastrectomy; Digestive tract reconstruction; Esophagogastric asymmetric anastomosis; Reflux esophagitis; Gastroenterography

©The Author(s) 2023. Published by Baishideng Publishing Group Inc. All rights reserved.

Core Tip: Reflux esophagitis is a common postoperative complication after proximal gastrectomy that can seriously affect the quality of life of these patients. We studied the novel surgical procedure termed esophagogastric asymmetric anastomosis (EGAA) as a potential solution to this post-surgery complication. Post-operatively, the results of upper gastroenterography showed no signs of gastroesophageal reflux while abdominal computed tomography examination findings showed a valve-like structure at the anastomosis. During follow-up, gastroscopy results revealed a closed valve-like form at the anastomosis site without stenosis or signs of reflux esophagitis. Our data suggest that EGAA is a feasible and safe procedure with excellent anti-reflux outcomes after proximal gastrectomy.

Citation: Pang LQ, Zhang J, Shi F, Pang C, Zhang CW, Liu YL, Zhao Y, Qian Y, Li XW, Kong D, Wu SN, Zhou JF, Xie CX, Chen S. Anti-reflux effects of a novel esophagogastric asymmetric anastomosis technique after laparoscopic proximal gastrectomy. *World J Gastrointest Surg* 2023; 15(8): 1761-1773

URL: <https://www.wjgnet.com/1948-9366/full/v15/i8/1761.htm>

DOI: <https://dx.doi.org/10.4240/wjgs.v15.i8.1761>

INTRODUCTION

Gastric cancer is a common malignant tumor of the gastrointestinal tract, with over 1 million new cases and 769000 deaths globally in 2020. It ranks fifth in terms of incidence and fourth in terms of mortality among malignant tumors[1]. Interestingly, the proportion of proximal gastric cancer (including upper gastric cancer and adenocarcinoma of the esophagogastric junction) has been on the rise for the past 40 years[2-5].

For early esophagogastric junction tumors, esophageal-residual gastric anastomosis after proximal gastrectomy is an effective method to reconstruct the digestive tract. Compared to total gastrectomy, this method maintains normal anatomy and functionality of the stomach and duodenum, and improves nutritional status and quality of life of patients post-operatively[6,7].

However, the loss of anti-reflux function due to surgical resection of the cardia, the decline in gastric peristalsis due to vagotomy, and the emptying delay caused by preserved pylorus can lead to several postoperative complications such as intractable reflux esophagitis, anastomotic stomatitis and stenosis, Barrett esophagus, and esophageal cell carcinoma[8-12], impacting quality of life post-surgery.

To address reflux esophagitis, several different gastrointestinal reconstruction modalities have been developed over the years. The primary anti-reflux surgical modalities in current use involve several common strategies[13-16]: (1) Extending the distance to reduce reflux using jejunal inter-positioning or double tract reconstruction; (2) reducing discharge resistance to reduce reflux, such as pyloric molding; and (3) in the esophageal-residual gastric anastomosis, improving anti-reflux function by rebuilding the structure of the gastric base and anastomotic opening using approaches such as the double-flap technique (Kamikawa anastomosis) or removing most of the stomach to reduce gastric acid secretion, *via* gastric tube reconstruction.

However, each of these techniques has its own limitations in terms of insufficient effectiveness of anti-reflux in the supine position, inadequate storage function or delayed emptying of the residual stomach, inadequate flow of food through the duodenum, and complexity of surgical approach[17-20].

Esophagogastronomy is considered the simplest reconstruction method used after proximal gastrectomy because it requires only one anastomosis, allowing easy postoperative endoscopic surveillance. A survey of 145 Japanese medical institutions showed that esophagogastric anastomosis was chosen for gastrointestinal reconstruction in approximately 50% of medical institutions[21,22]. However, it is not widely accepted because of severe postoperative complications such as reflux esophagitis and anastomotic stricture[11,12].

To improve the procedure of esophagogastric anastomosis to prevent reflux after proximal gastrectomy, we designed and implemented a novel reconstruction technique called esophagogastric asymmetric anastomosis (EGAA) based on years of clinical experience. Additionally, we established the EGAA mode to study the anti-reflux theory mechanism of asymmetric anastomosis aided by computer simulation technology using finite element analysis.

Herein, we present the technical details of EGAA and elaborate on its short-term outcomes after laparoscopic anti-reflux surgery.

MATERIALS AND METHODS

Critical features of the EGAA

There are four critical features of the EGAA method: The asymmetric cut of the lower esophagus, the asymmetry of the esophageal diameter in relation to the incision length in the anterior wall of the residual stomach, asymmetrical torsion of the esophagus with respect to the residual stomach, and asymmetrical suturing of the seromuscular layer of the residual stomach with the esophagus.

First, because of the oblique cut of the lower esophagus, the length of the anterior wall of the esophagus at the anastomotic site is approximately 1.5 cm longer than that of the posterior wall, forming a "door and block" frame with the folded stomach parts to prevent reflux and leakage after anastomosis (Figure 1A and D).

Second, a transverse incision was made in the anterior wall of the stomach about 3.5 cm from the proximal end of the residual stomach. The length of the incision is approximately 3.2-3.5 cm that is greater than the diameter of the esophagus but equal to the length of the distal oblique incision in the flat state of the esophagus (*i.e.*, half of the circumference of the distal oblique incision).

This design facilitates the closure of the lower end of the esophagus and helps to prevent stenosis (Figure 1A). The following formula was applied to improve the grasp of the criteria for the size of the anterior gastric wall incision:

Criterion length of gastric incision size (cm) $\approx \sqrt{(\pi r)^2 + g^2}$ (where r is the esophageal radius and g is the gap between the front and rear lengths of the esophageal wall).

Third, the esophagus and the residual stomach are asymmetrical on the sagittal surface after suturing the lower segment of the esophagus, which has undergone a 90-degree anticlockwise torsion, to the anterior incision of the residual stomach in an end-to-side anastomosis (Figure 1B). Both the distal esophagus and anastomotic sites tended to close in a resting state.

Finally, in the posterior wall of the anastomosis, the edge of the gastric stump (about 3.0 cm from the anastomosis) is sutured to the seromuscular layer of the esophagus (0.5-1.0 cm from the anastomosis) to form a flap-like structure by folding the wall of the partial residual stomach in the gastric lumen.

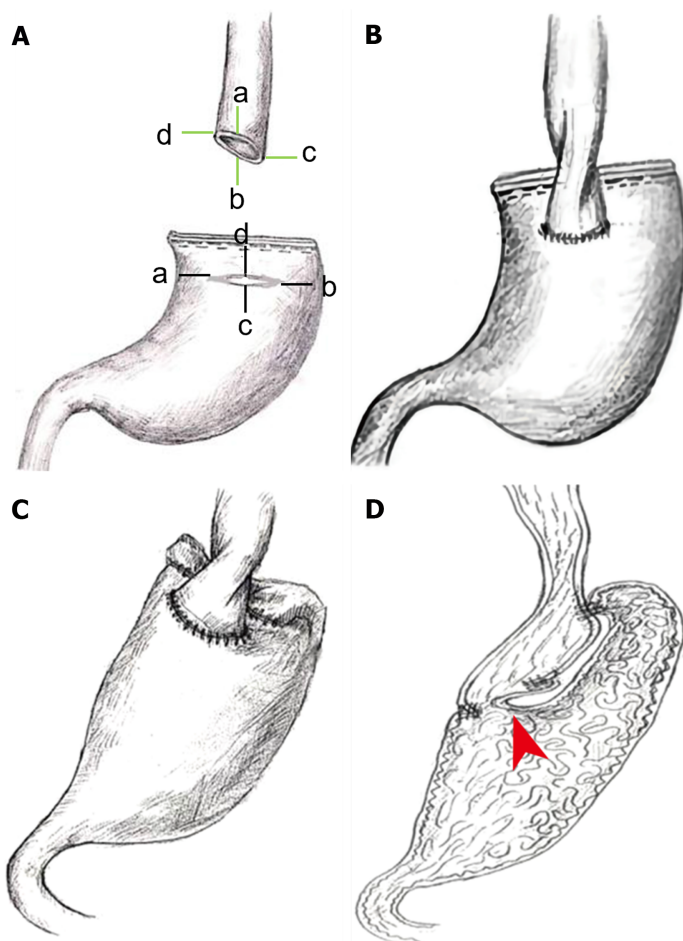
The criteria for this procedure were as follows: Except for the gastric margin of approximately 0.3 cm for the anastomosis, the distance between the gastric stump margin and the suture site of the posterior esophageal wall must be greater than 2.5 cm. The length of the valve-like structure formed by the folded gastric wall must be longer than 1.0 cm to ensure the effectiveness of closure.

In the anterior wall of the anastomosis, the seromuscular layer of the residual stomach and esophagus was sutured, pushing the anterior lip toward the posterior lip of the anastomosis and increasing the tendency for anastomotic closure in synergy with asymmetrical suturing of the posterior wall of the anastomosis (Figure 1C and D).

Computer simulations of EGAA mechanisms using the finite element method

To determine whether the procedure for asymmetric anastomosis of the esophagus and stomach could achieve the expected outcome theoretically, simulations were performed according to the procedure for EGAA (Figure 1D). The contraction movement of the stomach was modeled by applying thermal strain. Rubber materials were used to simulate the elastic behavior of the stomach and esophagus. Additionally, the esophageal and duodenal ends are restricted as displacement boundary conditions, and the pressure inside the stomach was also considered.

Adobe Illustrator was used to draw the curve of the gastric section (Figure 2A). The gastric curve was then transferred into SolidWorks to generate the geometric model, and this was then used to perform the finite element simulation using the ANSYS Workbench.



DOI: 10.4240/wjgs.v15.i8.1761 Copyright ©The Author(s) 2023.

Figure 1 Critical design features of the esophagogastric asymmetric anastomosis technique. A: (1) The diameter of the esophagus and the incision size of the residual gastric anterior wall are asymmetric; and (2) The length of the two sides of the lower esophagus is asymmetrical; The points a/b/c/d shows the corresponding points of asymmetric anastomosis respectively between esophagus and residual stomach; B: Asymmetry of the longitudinal section (or sagittal surface) of the esophagus and the residual stomach after anastomosis; C: After anastomosis, the seromuscular layer of the residual stomach and esophagus is asymmetrically sutured; D: The sagittal plane of esophagogastric asymmetric anastomosis: Showing the suture point of the asymmetric anastomosis; the red arrow indicates a flap structure formed by the folded gastric wall in the gastric cavity.

Patients

Thirteen patients (9 males and 4 females) were recruited for laparoscopic proximal gastrectomy (LPG) with EGAA at the Affiliated Huaian No. 1 People's Hospital of Nanjing Medical University between September 2021 and March 2023. One patient had a gastric stromal tumor. The other 12 patients had tumors that were histologically confirmed as adenocarcinoma of esophagogastric junction (AEG). The age range was 57–78 years (66.3 ± 7.0), with body mass index (BMI, kg/m²) ranging from 21.3–32.4 (24.5 ± 3.0).

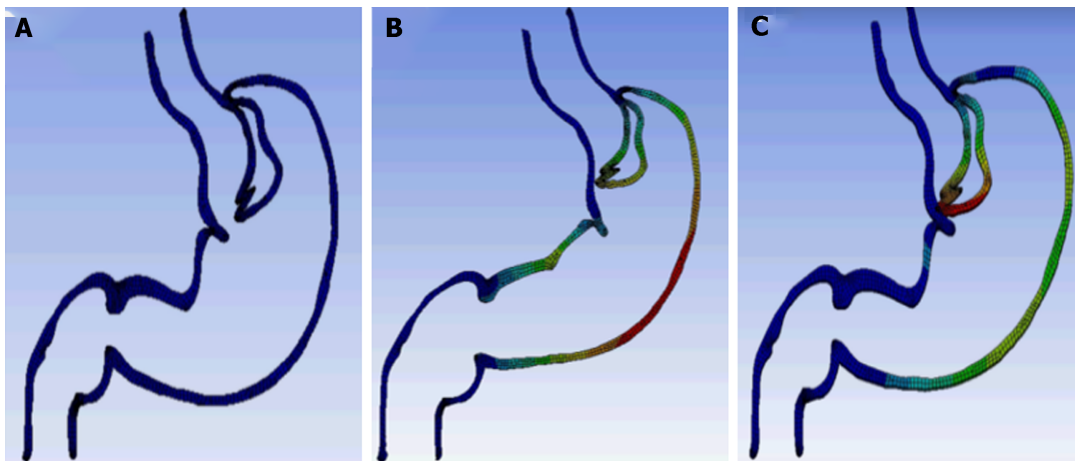
Preoperative diagnosis and evaluation included endoscopy, upper gastrointestinal series, and computed tomography (CT). Tumor stages were classified according to the International Anti-Cancer Alliance TNM staging system[23], and lymph node stations were numbered according to the definition of the Japanese Gastric Cancer Association[24]. Surgical complications were classified according to the Craven-Tindo classification[25]. Endoscopic evaluation of esophagitis was performed using the Los Angeles classification[26].

Surgical technique

Mobilization and transection of the stomach and lymphadenectomy: Under general anesthesia, patients were placed in the reverse Trendelenburg position with their legs apart. The surgeon and the first assistant were positioned on the right and left sides of the patient, respectively. After pneumoperitoneum was established using an open technique at the umbilicus and maintained at approximately 13–15 mmHg abdominal pressure, an electro-laparoscope was introduced through the 12-mm umbilical trocar before placing the remaining four working trocars (Figure 3A).

Omentectomy was performed along the superior edge of the transverse colon. The right parts of the omentum were dissected from the mesocolon around the transition zone of lymph node (LN) stations 4d–6, and the right gastroepiploic vessels were preserved.

The origin of the left gastroepiploic vessel (LGEV) was divided and ligated using hemo-clips. Dissection of the short gastric vessels (SVG) was continued along the spleen up to the esophagogastric junction before performing lymphaden-



DOI: 10.4240/wjgs.v15.i8.1761 Copyright ©The Author(s) 2023.

Figure 2 Computer simulations of esophagogastric asymmetric anastomosis mechanisms using the finite element method. A: Adobe Illustrator was used to draw the curve of the gastric section; B: The valve-like structure of the folded gastric wall and the posterior wall of the lower esophagus move to the upper left side like a lever at the site of anastomotic stoma, causing tightening of the anastomotic stoma; C: Because of the increased pressure in the gastric cavity and the expansion of the gastric fundus, the folded gastric wall and the esophageal wall moved to the left, which effectively tightened the anastomotic stoma.

ectomy, including LNs 4sb and 4sa along the LGEV and SVG. The stomach was then elevated and the peritoneum along the superior edge of the pancreas was mobilized. LNs along the left gastric artery (No. 7), common hepatic artery (No. 8a), celiac artery (No. 9), and proximal splenic artery (No. 11p) were retrieved. The root of the left gastric artery in the coronary vein was clipped and divided. The esophagogastric junction was mobilized. After complete exposure of the abdominal esophagus with the division of the anterior and posterior vagal trunks, LPG was completed by transection of the esophagus 2 cm proximal to the tumor with a 45-mm endoscopic linear stapler. The right pericardial (No. 1), left pericardial (No. 2), lesser curvature (No. 3), and lower thoracic para-esophageal nodes (No. 110) were completely retrieved using this procedure.

Proximal gastrectomy with an assisted abdominal incision: A small incision was made in the upper abdomen, and the stomach was exteriorized and stapled using a 60-mm linear cutting suture about 4 cm from the distal end of the tumor. The proximal margin of the specimen was examined pathologically when necessary. At the anterior wall 3.5 cm from the proximal end of the residual stomach, the transverse incision was marked and cut approximately 3.2-3.5 cm (Figure 3B).

Procedure of laparoscopic-assisted EGAA: The residual stomach was placed back into the abdominal cavity, the incision was temporarily closed, and pneumoperitoneum was re-established. A laparoscopic-assisted EGAA (hand suture) was performed following the critical features outlined previously.

The distal end of the esophagus was incised with an oblique short right and long left margin, with a difference of approximately 1.5 cm between the two sides (Figure 3C).

With a longitudinal anticlockwise torsion of the esophagus at 90°, an end-to-side anastomosis was performed between the cut end of the esophagus and the residual stomach incision.

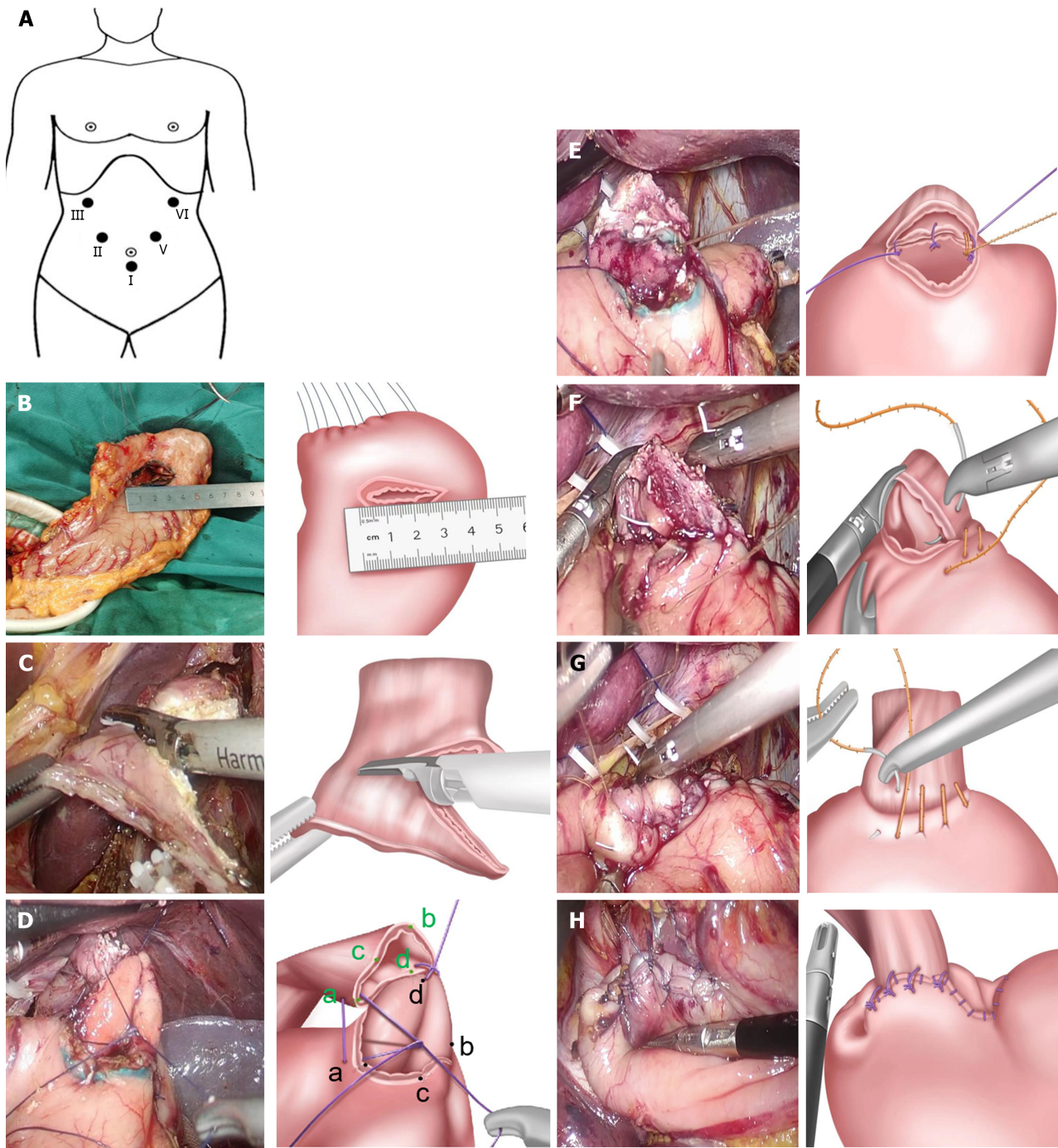
First, one full-thickness intermittent suture was performed between the right side (point d) of the lower esophagus and the middle point (point d) of the posterior wall in gastric incision. Then, the right point of the gastric wall incision (point a) was sutured to the middle point (point a) of the anterior wall in the lower esophagus, and the left point (point b) of the gastric incision was sutured to the middle point (point b) of the posterior wall in the lower esophagus (Figure 3D). After this three-stitch full-layer suture was used to complete the positioning suture of the posterior wall of the EGAA, the points a/b/d of the esophageal and gastric wall incisions were aligned in the posterior wall of the anastomosis (Figure 1A), and the lower esophageal segment was rotated anticlockwise at 90°. The whole muscle layer was continuously sutured in the posterior and anterior walls of the anastomosis with ETHICON SXMD1B405 (tensile strength size 3-0) (Figure 3E and F), and the anterior wall of the anastomosis was further strengthened by a suture in the seromuscular layer (Figure 3G).

Then, 50 mL saline with 2 mL methylene blue was injected through the gastric tube (dimensioning 35 cm) to confirm that no anastomotic leak occurred.

The cut end of the residual stomach (approximately 3.0 cm from the anastomosis) was sutured with 3-5 stitches to the posterior wall of the esophagus at a site 0.5-1.0 cm from the anastomosis in the seromuscular layer (Figure 3H). The residual stomach was sutured fixedly to the bilat with 3-5 stitches eral diaphragmatic feet.

Ethical considerations

This study used clinicopathological, surgical, and follow-up data. All patients were counseled about the operative procedure, including the potential merits and disadvantages of our approach and the uncertainty of clinical outcomes. All patients were in stable condition and written informed consent was obtained from each patient prior to the procedure. All experimental and surgical procedures of the study were approved by the ethics committee of The Affiliated Huaian No. 1



DOI: 10.4240/wjgs.v15.i8.1761 Copyright ©The Author(s) 2023.

Figure 3 Surgical Procedure of laparoscopic-assisted esophagogastric asymmetric-anastomosis. A: Reverse Trendelenburg position with both legs separated. Using five-hole method, the points I-V show the location of Trocars and operators respectively; B: The transverse incision of residual stomach wall is about 3.2-3.5 cm away from the proximal end at approximately 3.5 cm; C: The lower end of the esophagus is cut oblique, the length of both sides is asymmetric, the difference is approximately 1.5 cm; D: First, a full-thickness intermittent suture was performed between the right side (point d) of the lower esophagus and the middle point (point d) of the posterior wall in gastric incision. Then, the right point of the gastric wall incision (point a) was sutured to the middle point (point a) of the anterior wall in the lower esophagus, and the left point (point b) of the gastric incision was sutured to the middle point (point b) of the posterior wall in the lower esophagus. After performing a three-needle whole-layer positioning suture of the posterior wall in oesophagogastric anastomosis, oesophageal torsion was completed at a 90° anticlockwise; E: The back wall of the anastomosis was continuously stitched; F: The front wall of the anastomosis was continuously stitched; G: The seromuscular layer of the anterior wall of the anastomosis was further stitched; H: The residual gastric cutting end (approximately 3 cm from the anastomosis) was stitched to the posterior wall of the esophagus, about 0.5-1 cm away from the anastomosis.

People's Hospital of Nanjing Medical University and strictly adhered to the guidelines of the Helsinki Declaration of 1964 and its latest amendments.

RESULTS

Gastric peristalsis was simulated using the thermal-strain method. After decreasing the temperature, the model size was reduced by 30% in a clockwise direction. However, the suture of the incisal gastric margin and the posterior esophageal wall caused the valve-like folded gastric wall and posterior lower esophageal wall to move to the upper left, tightening of the anastomotic stoma (Figure 2B, Video 1).

Gastric fundus dilation simulation

To simulate the dilation of the reconstructed gastric fundus under gastric peristalsis and intragastric pressure, we applied different pressures to the gastric fundus, gastric body and antrum. During gastric peristalsis and contraction, the gas and liquid contents in the gastric cavity were observed to flow to the proximal end, increasing the pressure and expanding the gastric fundus gradually. According to the simulation results, because of the increased pressure in the gastric cavity and the expansion of the gastric fundus, the folded gastric wall and the esophageal wall moved to the left, tightening the anastomotic stoma (Figure 2C).

Following the simulations, EGAA surgeries were performed. All procedures were completed with a mean operation time of 304.2 ± 44.3 min, and the mean blood loss was 88.5 ± 46.3 mL. No intraoperative complications, conversions, or operative mortality was observed in the 13 patients. Two postoperative complications (minor grade II anastomotic leakage, cured conservatively) occurred, and patients recovered (median postoperative hospital stay: 19.2 ± 11.7 d). Patient background and surgical outcome are shown in Table 1.

One week post-surgery, abdominal CT examination (oral CO₂ powder) revealed that 11 patients had valve-like structures, inflatable stomach cavity and closed anastomosis (Figure 4). Upper gastroenterography showed good residual gastric excretion, no anastomotic leakage/stenosis, and no reflux (all patients, upright position). In supine/low head positions, eight patients exhibited no gastroesophageal reflux, three had mild reflux, and two had obvious reflux (Figure 5, Video 2).

Gastroscopy during postoperative follow-up (2 to 19 mo) revealed a closed valve-like structure at the anastomosis site in 11 patients. Additionally, good extensibility and gastric residual discharge were observed, with no signs of stenosis or apparent reflux esophagitis. Only two patients exhibited an uncharacteristic valve-like structure and reflux esophagitis (class LA-B, Los Angeles classification). Inverted gastroscope revealed a reconstructed gastric base (all patients), with 11 patients showing good coverage by the gastric mucosal valve-like structures at site of anastomosis. Follow-up endoscopic findings in representative cases are shown in Figure 6 and Video 3).

In the average 10.2 ± 6.2 mo of questionnaire follow-up, 11 patients recovered well with no symptoms such as stomach distension, heartburn, and dysphagia. Two patients exhibited gastroesophageal reflux (controlled by proton pump inhibitors, gastric dynamic drugs, and functional exercise). No recurrence or fatalities occurred during the median 10.2-month follow-up period (range, 2-19 mo).

By last follow-up, of the 13 EGAA surgery patients, four lost weight (one developed fatty diarrhea post-cholecystectomy 6 month post-surgery). Five patients showed no change in body weight and four showed weight gain. The specific changes in BMI are shown in Table 1.

DISCUSSION

Esophagogastronomy is considered the simplest and most convenient reconstruction procedure following proximal gastrectomy, as it preserves digestion and absorption. However, it is associated with a high incidence of reflux esophagitis and anastomotic stenosis, which significantly impact the patient's quality of life[21,27].

There are three problems to be addressed for anastomosis stoma of the esophagus and stomach to alleviate postoperative complications such as reflux and anastomosis stenosis[28-30]: (1) Maintaining closed state of anastomosis stoma and reducing gastric fluid reflux in the supine position; (2) maintaining gastric cavity tension to prevent weakness and gastric retention; and (3) prevent anastomosis narrowing.

To overcome these problems, we designed a four-asymmetric suture technique to reconstruct the gastric fundus and form a valve shape by folding part of the residual stomach wall at the posterior lip of the anastomosis in the gastric cavity. To improve study design processes and confirm a specific anti-reflux function, a computer simulation was applied using finite element analysis.

The anti-reflux effect of asymmetric anastomosis was further evaluated by imaging and endoscopy post-operatively. Abdominal CT examination (oral CO₂) showed circular expansion of the residual stomach cavity, and a valve-like tightly closed stoma at the site of anastomosis. The CO₂ did not leak easily, confirming the "one-way valve" function. Upper gastroenterography showed good efficiency of stomach discharge or excretion to the small intestine, no gastric weakness, and no reflux even when most of the patients reached 15° in the supine and head lowered position, indicating an anti-reflux effect of the reconstructed anastomosis. Digestive endoscopy showed that the anastomosis was not narrowed, softened, or extended and had no mucus lake in the gastric cavity. The reconstructed gastric base and valve-like structures were observed *via* an inverted gastroscope and revealed the gastric mucosa wrapped around the mirror body wall.

The results of our computer simulation and theoretical analysis further support the findings of the clinical examination. The computer simulation results demonstrate that during the peristaltic state, the folded stomach wall and the esophageal wall move in a clockwise forward motion, primarily due to the suture fixation of the residue and the rear wall of the esophagus. This movement leads to further tightening of the anastomosis stoma. Additionally, the expansion of the

Table 1 Preoperative data and clinical outcome of the patients

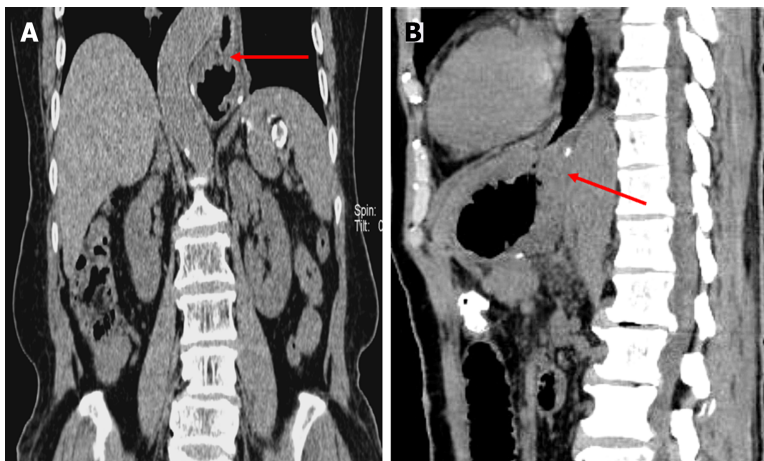
| Case | Age | Gender | Preoperative BMI | Operation method | Siewert type | Operation time (min) | Anastomosis time (min) | Blood loss (mL) | Final TNM | Final stage ¹ | Discharge (POD) | Operative morbidity | Reflux esophagitis | Postoperative BMI | Symptom of reflux | Postoperative follow-up (mo) |
|----------|--------------|--------|------------------|------------------|--------------|----------------------|------------------------|-----------------|-----------|--------------------------|-----------------|------------------------------|--------------------|-------------------|-------------------|------------------------------|
| 1 | 68 | F | 32.4 | LPG | II | 340 | 45 | 200 | T2N0M0 | IB | 12 | None | Class LA-B | 33.5 | + | 19 |
| 2 | 57 | F | 27 | LPG | III | 360 | 55 | 100 | T1N0M0 | IA | 17 | None | Class LA-B | 23.2 | + | 18 |
| 3 | 65 | M | 22.5 | LPG | II | 315 | 50 | 150 | T1N0M0 | IA | 12 | None | None | 23.7 | None | 18 |
| 4 | 64 | M | 22.1 | LPG | II | 260 | 40 | 50 | T1N0M0 | IA | 10 | None | None | 22.1 | None | 18 |
| 5 | 67 | M | 24.6 | LPG | II | 290 | 45 | 50 | T1N0M0 | IA | 11 | None | None | 24.9 | None | 12 |
| 6 | 63 | M | 25.1 | LPG | II | 270 | 45 | 50 | T3N1M0 | IIB | 45 | Grade II Anastomotic leakage | None | 25.1 | None | 9 |
| 7 | 77 | M | 26.1 | LPG | II | 320 | 50 | 100 | T3N0M0 | IIA | 14 | None | None | 24.4 | None | 9 |
| 8 | 71 | F | 21.3 | LPG | II | 280 | 45 | 100 | T1N0M0 | IA | 18 | None | None | 22.6 | None | 9 |
| 9 | 66 | M | 23.5 | LPG | I | 200 | 35 | 100 | T1N0M0 | IA | 15 | None | None | 23.5 | None | 7 |
| 10 | 57 | F | 25.2 | LPG | II | 350 | 50 | 100 | T3N0M0 | IIA | 11 | None | None | 22.3 | None | 5 |
| 11 | 57 | M | 21.5 | LPG | II | 330 | 40 | 50 | T2N1M0 | IIB | 43 | Grade II Anastomotic leakage | None | 20.3 | None | 4 |
| 12 | 72 | M | 24.4 | LPG | II | 340 | 45 | 50 | T1N0M0 | IA | 18 | None | None | 24.4 | None | 3 |
| 13 | 78 | M | 22.9 | LPG | II | 300 | 40 | 50 | T1N0M0 | IA | 24 | None | None | 22.9 | None | 2 |
| mean ±SD | 66.3 ± 6.993 | | 24.51 ± 2.953 | | | 304.2 ± 44.34 | 45.00 ± 5.401 | 88.46 ± 46.34 | | | 19.23 ± 11.66 | | | 24.07 ± 3.121 | | 10.23 ± 6.207 |

¹Staging was performed according to the 7th edition of the International Union against Cancer tumor-node-metastasis staging system for gastric cancer.

M: Male; F: Female; LPG: Laparoscopic proximal gastrectomy; TNM: Tumor-node-metastasis; POD: Postoperative day.

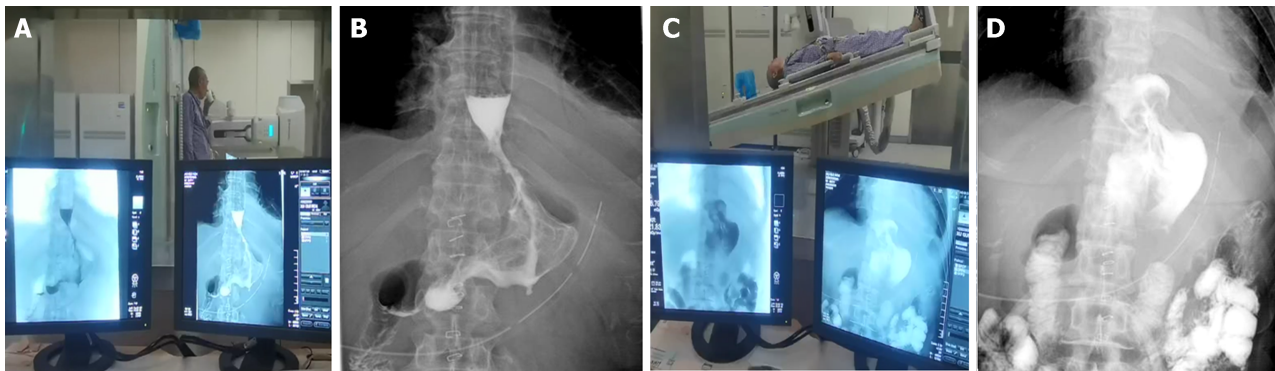
gastric cavity through increased peristaltic pressure applies pressure on the lower esophageal tissue, resulting in an enhanced anti-reflux effect.

Based on the above results, we speculate that in the resting state, the anastomotic stoma and lower esophageal end are closed by four synergistic actions: longitudinal torsion of the lower section of the esophagus, asymmetric size of the esophageal diameter and residual gastric wall incision, suture of the seromuscular layer in the anterior wall, and the valve-like structure at the site of the posterior wall of the anastomosis stoma, acting as an anti-reflux function. Meanwhile, the joint effect of the pylorus can maintain a certain pressure in the stomach cavity, promote gastric emptying, and reduce the symptoms of fullness and discomfort caused by stomach retention.



DOI: 10.4240/wjgs.v15.i8.1761 Copyright ©The Author(s) 2023.

Figure 4 Abdominal computed tomography (oral CO₂ powder). A: coronal surface: The valve-like structure can be seen at the anastomosis, tightly closed; B: Sagittal plane: The gastric cavity is inflated, seeing the anastomotic valve-like structure with gear sample occlusion and a small amount of gas overflow in the esophagus.



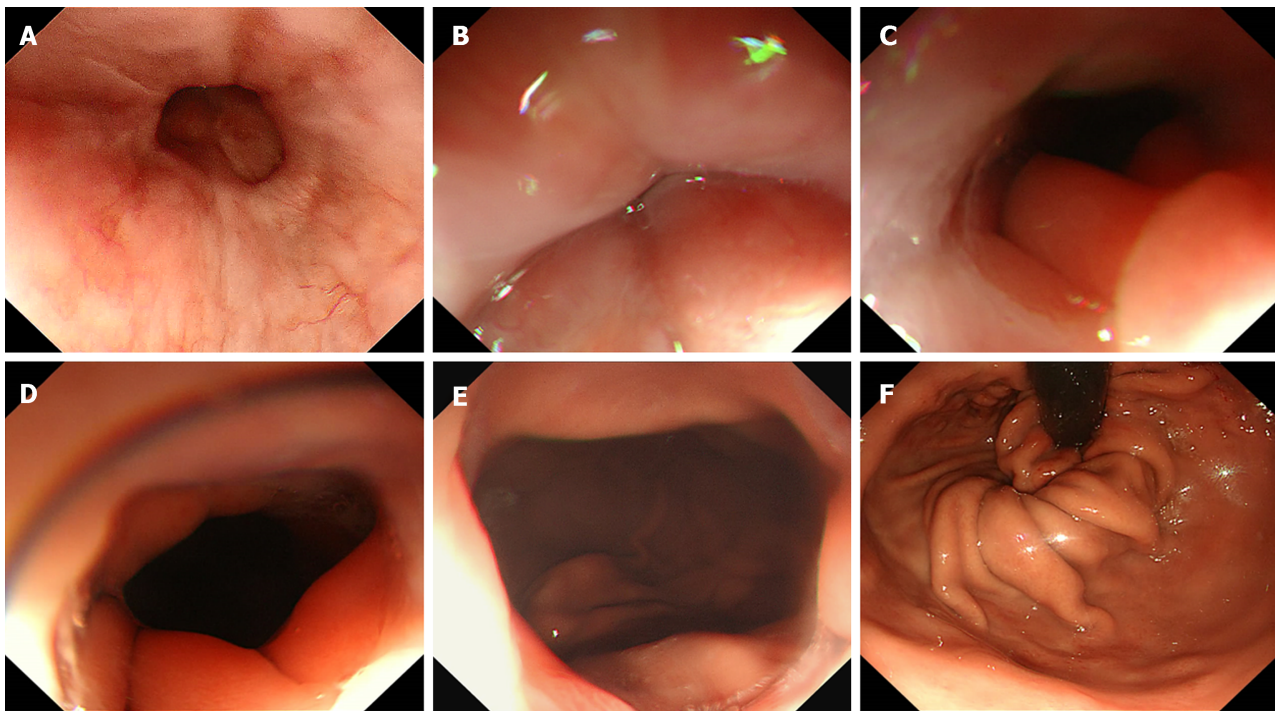
DOI: 10.4240/wjgs.v15.i8.1761 Copyright ©The Author(s) 2023.

Figure 5 Upper gastrointestinal tract angiography. A and B: Upright position: Unobstructed anastomosis, such as a normal cardia-like image; C and D: Head low foot high level: See the anastomosis is completely closed, no contrast agent reflux.

Three functional changes may occur in the state of gastric peristalsis: (1) With gastric contraction and an increase in gastric cavity pressure, gastric reflux to the esophagus occurs, pushing the valve-like stoma and further closing the anastomotic site. This valve-like structure functions as a unidirectional valve that is not prone to slip and cause reflux and leakage. However, while eating, the peristaltic pressure of the proximal esophagus and esophageal expansion by food clumps make the valve-like structure move distally but does not affect the passage of food; and (2) With peristalsis carried out from proximal to distal, the relaxation of the reconstructed gastric fundus and the subsequent passive expansion also have a certain anti-reflux effect on the compression of the lower end of the esophagus. According to computer simulation results, when the stomach contracts and shrinks, the valve-like structure moves to the upper left side, tightening the anastomotic stoma.

During follow-up, the majority of patients showed satisfactory recovery outcomes, except for two early EGAA patients who developed complications of reflux esophagitis, characterized by acid reflux and belching. This suggests that the four different asymmetric suture techniques might not have met the design standards due to lack of practical experience in the early stage of attempting the surgery, leading to incomplete closure of the valve-like structure, a half-folded gastric wall, and poor anti-reflux effect. However, with experience and improved surgical techniques, subsequent EGAA procedures were successful in achieving good anti-reflux effects, as observed in 11 patients. Notably, in the last 8 patients, gastroenterography revealed no reflux even in the supine and low head positions.

Finally, despite the advantages of our new approach, we acknowledge the limitations of the present study. As this was a single-center study with a small number of patients, more objective comparisons in multicenter trials are required to validate the procedure. Moreover, as a new technique, this requires a learning curve for surgeons to gain the necessary skills before satisfactory results can be achieved.



DOI: 10.4240/wjgs.v15.i8.1761 Copyright ©The Author(s) 2023.

Figure 6 Gastroscope. A: The esophageal mucosa is smooth, without hyperemia and edema, with a clear capillary network; B: The valve-like structure of the anastomosis is closed in the non-inflated state; C-E: The valve-like structure of the anastomosis opens gradually in the inflated state, with good dilation and extensibility, showing a visible dentate linear-like structure; F: The reconstructed gastric base can be seen under the inverted gastroscop, which was wrapped well by the valve-like structures of the folded gastric wall mucosa at the site of the anastomosis;

CONCLUSIONS

In this clinical study, we designed the valve-like structure and anti-reflux function of the EGAA. The surgical procedures we adopted adhered to basic medical principles as well as being relatively easy to master. The clinical outcomes of 13 patients indicated that this surgical technique is practical, safe, and reliable. However, it is necessary to further investigate its long-term anti-reflux effectiveness with more patients and randomized controlled studies.

ARTICLE HIGHLIGHTS

Research background

The direction of future research will be focused on investigating the long-term effectiveness of anti-reflux measures with larger patient populations and randomized controlled studies.

Research motivation

The implementation of esophagogastric asymmetric anastomosis (EGAA) proved to be a secure and viable procedure, yielding outstanding anti-reflux results following proximal gastrectomy.

Research objectives

The objective of this research was to investigate the effectiveness of the EGAA technique in preventing reflux after proximal gastrectomy that represents a new approach to anti-reflux surgery.

Research methods

First, we utilized a thermal stress computer simulation to replicate gastric peristalsis at the EGAA site. This was conducted to gain a deeper understanding of the mechanism and efficacy of the anti-reflux function. Subsequently, we performed digestive tract reconstruction on 13 patients who had undergone laparoscopic proximal gastrectomy using the EGAA technique. We closely monitored the structural and functional changes of the reconstruction through imaging exams and gastroscopy after the surgery. Lastly, we conducted follow-up assessments on the patients to determine the effectiveness of the anti-reflux effects.

Research results

The research findings suggest that the valve-like reconstructed structure at the site of EGAA was effective in preventing gastroesophageal reflux in patients who underwent the procedure. However, further studies are needed to evaluate the long-term efficacy and safety of this technique.

Research conclusions

The limitations of current anti-reflux surgical techniques have led to the development of novel methods to prevent postoperative reflux. The EGAA technique is designed to address the shortcomings of conventional techniques by utilizing computer simulation technology to study the anti-reflux mechanism of asymmetric anastomosis. Solving these problems and improving the effectiveness of anti-reflux techniques will have significant implications for the future of gastrointestinal reconstruction and postoperative patient outcomes.

Research perspectives

Our study highlights the increasing proportion of proximal gastric cancer over the past few decades that has resulted in reflux esophagitis becoming a common postoperative complication after proximal gastrectomy. There is a need for a safer method of performing esophageal-gastric anastomosis to reduce the risk of reflux and other complications for patients undergoing this surgery. Esophageal-residual gastric anastomosis after proximal gastrectomy is an effective way to reconstruct the digestive tract, but the loss of anti-reflux function can lead to several postoperative complications, affecting the quality of life of the patient. The significance of this study lies in finding ways to reduce these complications and improve the outcomes for patients.

ACKNOWLEDGEMENTS

We would like to thank Xu C and Xu R for the technical assistance in this study.

FOOTNOTES

Author contributions: Pang LQ, Zhang J, Shi F, Pang C and Chen S conceived and designed the study; Pang LQ and Zhang J performed the operation; Zhang CW, Shi F, Pang C, Liu YL, Zhao Y, Qian Y, Li XW, Xie CX, Kong D, Wu SN, Zhou JF and Chen S contributed to the study design, analysis, and interpretation of the data; Pang LQ and Chen S wrote the manuscript; all authors reviewed and approved the manuscript; Pang LQ, Zhang J, Shi F, Pang C and Chen S contributed equally to this work.

Institutional review board statement: All experimental and surgical procedures of the study were approved by the ethics committee of The Affiliated Huaian No. 1 People's Hospital of Nanjing Medical University and strictly adhered to the guidelines of the Helsinki Declaration of 1964 and its latest amendments.

Informed consent statement: All study participants, or their legal guardian, provided informed written consent prior to study enrollment.

Conflict-of-interest statement: The authors have no conflicts of interest to declare.

Data sharing statement: The data that support the findings of this study are available on request from the corresponding author.

STROBE statement: The authors have read the STROBE Statement – checklist of items, and the manuscript was prepared and revised according to the STROBE Statement – checklist of items.

Open-Access: This article is an open-access article that was selected by an in-house editor and fully peer-reviewed by external reviewers. It is distributed in accordance with the Creative Commons Attribution Non Commercial (CC BY-NC 4.0) license, which permits others to distribute, remix, adapt, build upon this work non-commercially, and license their derivative works on different terms, provided the original work is properly cited and the use is non-commercial. See: <https://creativecommons.org/licenses/by-nc/4.0/>

Country/Territory of origin: China

ORCID number: Li-Qun Pang 0000-0003-0624-6362; Shang-Nong Wu 0000-0003-2102-5269; Song Chen 0000-0001-6412-5740.

S-Editor: Yan JP

L-Editor: A

P-Editor: Cai YX

REFERENCES

- 1 **Sung H**, Ferlay J, Siegel RL, Laversanne M, Soerjomataram I, Jemal A, Bray F. Global Cancer Statistics 2020: GLOBOCAN Estimates of Incidence and Mortality Worldwide for 36 Cancers in 185 Countries. *CA Cancer J Clin* 2021; **71**: 209-249 [PMID: 33538338 DOI: 10.3322/caac.21660]
- 2 **Liu K**, Yang K, Zhang W, Chen X, Zhang B, Chen Z, Chen J, Zhao Y, Zhou Z, Chen L, Hu J. Changes of Esophagogastric Junctional Adenocarcinoma and Gastroesophageal Reflux Disease Among Surgical Patients During 1988-2012: A Single-institution, High-volume Experience in China. *Ann Surg* 2016; **263**: 88-95 [PMID: 25647058 DOI: 10.1097/SLA.0000000000001148]
- 3 **Information Committee of Korean Gastric Cancer Association**. Korean Gastric Cancer Association Nationwide Survey on Gastric Cancer in 2014. *J Gastric Cancer* 2016; **16**: 131-140 [PMID: 27752390 DOI: 10.5230/jgc.2016.16.3.131]
- 4 **Buas MF**, Vaughan TL. Epidemiology and risk factors for gastroesophageal junction tumors: understanding the rising incidence of this disease. *Semin Radiat Oncol* 2013; **23**: 3-9 [PMID: 23207041 DOI: 10.1016/j.semradonc.2012.09.008]
- 5 **Kusano C**, Gotoda T, Khor CJ, Katai H, Kato H, Taniguchi H, Shimoda T. Changing trends in the proportion of adenocarcinoma of the esophagogastric junction in a large tertiary referral center in Japan. *J Gastroenterol Hepatol* 2008; **23**: 1662-1665 [PMID: 19120859 DOI: 10.1111/j.1440-1746.2008.05572.x]
- 6 **Rosa F**, Quero G, Fiorillo C, Bissolati M, Cipollari C, Rausei S, Chiari D, Ruspi L, de Manzoni G, Costamagna G, Doglietto GB, Alfieri S. Total vs proximal gastrectomy for adenocarcinoma of the upper third of the stomach: a propensity-score-matched analysis of a multicenter western experience (On behalf of the Italian Research Group for Gastric Cancer-GIRCG). *Gastric Cancer* 2018; **21**: 845-852 [PMID: 29423892 DOI: 10.1007/s10120-018-0804-3]
- 7 **Takiguchi N**, Takahashi M, Ikeda M, Inagawa S, Ueda S, Nobuoka T, Ota M, Iwasaki Y, Uchida N, Kodera Y, Nakada K. Long-term quality-of-life comparison of total gastrectomy and proximal gastrectomy by postgastroectomy syndrome assessment scale (PGSAS-45): a nationwide multi-institutional study. *Gastric Cancer* 2015; **18**: 407-416 [PMID: 24801198 DOI: 10.1007/s10120-014-0377-8]
- 8 **Yanes M**, Santoni G, Maret-Ouda J, Ness-Jensen E, Färkkilä M, Lynge E, Pukkala E, Romundstad P, Tryggvadóttir L, Euler-Chelpin MV, Lagergren J. Laryngeal and Pharyngeal Squamous Cell Carcinoma After Antireflux Surgery in the 5 Nordic Countries. *Ann Surg* 2022; **276**: e79-e85 [PMID: 33074906 DOI: 10.1097/SLA.0000000000004423]
- 9 **Berlth F**, Lorenz F, Kleinert R, Langhammer N, Hadzijušević E, Chon SH. [GERD and Barrett: Natural Course of One Disease - Update Diagnostics and Therapy]. *Ther Umsch* 2022; **79**: 151-158 [PMID: 35440194 DOI: 10.1024/0040-5930/a001342]
- 10 **Nishi T**, Makuuchi H, Ozawa S, Shimada H, Chino O. The Present Status and Future of Barrett's Esophageal Adenocarcinoma in Japan. *Digestion* 2019; **99**: 185-190 [PMID: 30481763 DOI: 10.1159/000490508]
- 11 **Chen XF**, Zhang B, Chen ZX, Hu JK, Dai B, Wang F, Yang HX, Chen JP. Gastric tube reconstruction reduces postoperative gastroesophageal reflux in adenocarcinoma of esophagogastric junction. *Dig Dis Sci* 2012; **57**: 738-745 [PMID: 21953142 DOI: 10.1007/s10620-011-1920-7]
- 12 **Yoo CH**, Sohn BH, Han WK, Pae WK. Long-term results of proximal and total gastrectomy for adenocarcinoma of the upper third of the stomach. *Cancer Res Treat* 2004; **36**: 50-55 [PMID: 20396565 DOI: 10.4143/crt.2004.36.1.50]
- 13 **Aikou T**, Natsugoe S, Shimazu H, Nishi M. Antrum preserving double tract method for reconstruction following proximal gastrectomy. *Jpn J Surg* 1988; **18**: 114-115 [PMID: 3386066 DOI: 10.1007/bf02470857]
- 14 **Kameyama J**, Ishida H, Yasaku Y, Suzuki A, Kuzu H, Tsukamoto M. Proximal gastrectomy reconstructed by interposition of a jejunal pouch. Surgical technique. *Eur J Surg* 1993; **159**: 491-493 [PMID: 8274558 DOI: 10.1007/s00268-005-7793-1]
- 15 **Kuroda S**, Nishizaki M, Kikuchi S, Noma K, Tanabe S, Kagawa S, Shirakawa Y, Fujiwara T. Double-Flap Technique as an Antireflux Procedure in Esophagogastric Reconstruction after Proximal Gastrectomy. *J Am Coll Surg* 2016; **223**: e7-e13 [PMID: 27157920 DOI: 10.1016/j.jamcollsurg.2016.04.041]
- 16 **Shiraishi N**, Hirose R, Morimoto A, Kawano K, Adachi Y, Kitano S. Gastric tube reconstruction prevented esophageal reflux after proximal gastrectomy. *Gastric Cancer* 1998; **1**: 78-79 [PMID: 11957047 DOI: 10.1007/s101200050058]
- 17 **Shoji Y**, Nunobe S, Ida S, Kumagai K, Ohashi M, Sano T, Hiki N. Surgical outcomes and risk assessment for anastomotic complications after laparoscopic proximal gastrectomy with double-flap technique for upper-third gastric cancer. *Gastric Cancer* 2019; **22**: 1036-1043 [PMID: 30838469 DOI: 10.1007/s10120-019-00940-0]
- 18 **Kuroda S**, Choda Y, Otsuka S, Ueyama S, Tanaka N, Muraoka A, Hato S, Kimura T, Tanakaya K, Kikuchi S, Tanabe S, Noma K, Nishizaki M, Kagawa S, Shirakawa Y, Kamikawa Y, Fujiwara T. Multicenter retrospective study to evaluate the efficacy and safety of the double-flap technique as antireflux esophagogastric reconstruction after proximal gastrectomy (rD-FLAP Study). *Ann Gastroenterol Surg* 2019; **3**: 96-103 [PMID: 30697614 DOI: 10.1002/ags3.12216]
- 19 **Aihara R**, Mochiki E, Ohno T, Yanai M, Toyomasu Y, Ogata K, Ando H, Asao T, Kuwano H. Laparoscopy-assisted proximal gastrectomy with gastric tube reconstruction for early gastric cancer. *Surg Endosc* 2010; **24**: 2343-2348 [PMID: 20376493 DOI: 10.1007/s00464-010-0947-8]
- 20 **Nomura E**, Isozaki H, Fujii K, Toyoda M, Niki M, Sako S, Mabuchi H, Nishiguchi K, Tanigawa N. Postoperative evaluation of function-preserving gastrectomy for early gastric cancer. *Hepatogastroenterology* 2003; **50**: 2246-2250 [PMID: 14696509 DOI: 10.1046/j.1365-2168.1996.02093.x]
- 21 **Kumagai K**, Shimizu K, Yokoyama N, Aida S, Arima S, Aikou T; Japanese Society for the Study of Postoperative Morbidity after Gastrectomy. Questionnaire survey regarding the current status and controversial issues concerning reconstruction after gastrectomy in Japan. *Surg Today* 2012; **42**: 411-418 [PMID: 22391980 DOI: 10.1007/s00595-012-0159-z]
- 22 **Aizawa M**, Yabusaki H, Nakada K, Matsuki A, Bamba T, Nakagawa S. Simple modifications of conventional esophagogastric reconstruction after proximal gastrectomy adequately reduces the postoperative reflux esophagitis: a retrospective analysis of posterolateral fundoplication. *Langenbecks Arch Surg* 2022; **407**: 3153-3160 [PMID: 35902383 DOI: 10.1007/s00423-022-02628-z]
- 23 **Ajani JA**, D'Amico TA, Bentrem DJ, Chao J, Cooke D, Corvera C, Das P, Enzinger PC, Enzler T, Fanta P, Farjah F, Gerdes H, Gibson MK, Hochwald S, Hofstetter WL, Ilson DH, Keswani RN, Kim S, Kleinberg LR, Klemperer SJ, Lacy J, Ly QP, Matkowskyj KA, McNamara M, Mulcahy MF, Outlaw D, Park H, Perry KA, Pimiento J, Poultides GA, Reznik S, Roses RE, Strong VE, Su S, Wang HL, Wiesner G, Willett CG, Yakoub D, Yoon H, McMillian N, Pluchino LA. Gastric Cancer, Version 2.2022, NCCN Clinical Practice Guidelines in Oncology. *J Natl Compr Canc Netw* 2022; **20**: 167-192 [PMID: 35130500 DOI: 10.6004/jnccn.2022.0008]
- 24 **Japanese Gastric Cancer Association**. Japanese Classification of Gastric Carcinoma - 2nd English Edition -. *Gastric Cancer* 1998; **1**: 10-24 [PMID: 11957040 DOI: 10.1007/s101209800016]
- 25 **Clavien PA**, Barkun J, de Oliveira ML, Vauthey JN, Dindo D, Schulick RD, de Santibañes E, Pekolj J, Slankamenac K, Bassi C, Graf R,

- Vonlanthen R, Padbury R, Cameron JL, Makuuchi M. The Clavien-Dindo classification of surgical complications: five-year experience. *Ann Surg* 2009; **250**: 187-196 [PMID: 19638912 DOI: 10.1097/SLA.0b013e3181b13ca2]
- 26 **Lundell LR**, Dent J, Bennett JR, Blum AL, Armstrong D, Galmiche JP, Johnson F, Hongo M, Richter JE, Spechler SJ, Tytgat GN, Wallin L. Endoscopic assessment of oesophagitis: clinical and functional correlates and further validation of the Los Angeles classification. *Gut* 1999; **45**: 172-180 [PMID: 10403727 DOI: 10.1136/gut.45.2.172]
- 27 **Nakamura M**, Yamaue H. Reconstruction after proximal gastrectomy for gastric cancer in the upper third of the stomach: a review of the literature published from 2000 to 2014. *Surg Today* 2016; **46**: 517-527 [PMID: 25987497 DOI: 10.1007/s00595-015-1185-4]
- 28 **Aizawa M**, Ishida M, Kodera Y, Kanazawa T, Fukushima R, Akashi Y, Yoshimura F, Ota S, Oshio A, Nakada K. A comparison of the effects of anti-reflux procedures during esophagogastrostomy after proximal gastrectomy on the postoperative quality of life. *Surg Today* 2023; **53**: 182-191 [PMID: 35778566 DOI: 10.1007/s00595-022-02536-1]
- 29 **Tao K**, Dong J, He S, Xu Y, Yang F, Han G, Abe M, Zong L. Surgical Strategies for Siewert Type II Esophagogastric Junction Carcinomas: A Randomized Controlled Trial. *Front Oncol* 2022; **12**: 852594 [PMID: 35814411 DOI: 10.3389/fonc.2022.852594]
- 30 **Zhang H**, Sun Z, Xu HM, Shan JX, Wang SB, Chen JQ. Improved quality of life in patients with gastric cancer after esophagogastrostomy reconstruction. *World J Gastroenterol* 2009; **15**: 3183-3190 [PMID: 19575501 DOI: 10.3748/wjg.15.3183]



Published by **Baishideng Publishing Group Inc**
7041 Koll Center Parkway, Suite 160, Pleasanton, CA 94566, USA
Telephone: +1-925-3991568
E-mail: bpgoffice@wjgnet.com
Help Desk: <https://www.f6publishing.com/helpdesk>
<https://www.wjgnet.com>

