

# Metric HP Accu-Lock Special Retainer Inserts

**Cut Costs. Cut Lead Times. Reduce Waste.**

# HP

Accu-Lock™  
Retainer Inserts

Create, modify and reuse special punch & die retainers on-site and on-demand with HP Accu-Lock Retainer Inserts. Available in Metric and Imperial sizes, Accu-Lock inserts simplify special retainer use by allowing them to be manufactured and modified in-house.

- ▼ Available in Metric and Imperial sizes for all heavy duty and light duty special retainers
- ▼ Fully compatible with all metric ball lock punches, including HP Ball Lock punches from Impax Tooling Solutions®
- ▼ Flexibility to modify and reuse existing retainers to reduce waste
- ▼ Eliminate lead times and extra costs on special retainer orders
- ▼ Engineered to hold punches securely and accurately to ensure performance



**CUT COSTS. CUT LEAD TIMES. REDUCE WASTE.**

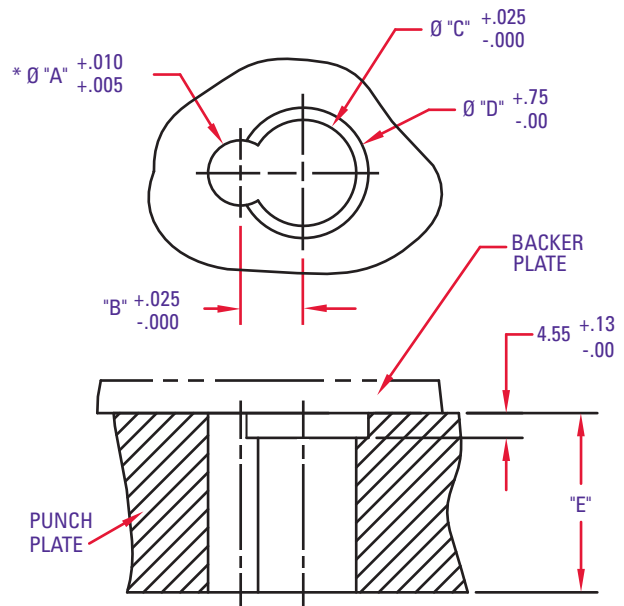
Before HP Accu-Lock, manufacturing ball lock special retainers in-house required complicated jigs, inspection fixtures and the specialized knowledge to machine ball holes into the punch plate.

Now, with patent pending HP Accu-Lock Inserts, the process has been simplified. No ball hole is needed. The punch is held in place securely and accurately with a straight line machined hole that can easily be created in-house.

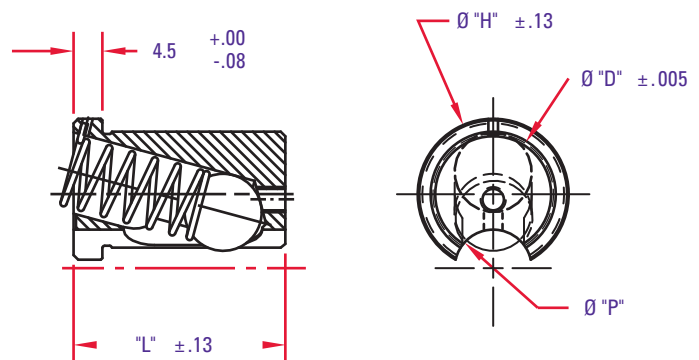
**HP Accu-Lock Inserts are available for all heavy duty and light duty special retainers.**

	PUNCH HOLE Ø	INSERT	CENTER TO CENTER	INSERT HOLE Ø	HEAD C-BORE Ø	PLATE THICKNESS	
<b>Heavy Duty</b>	"A"	PART #	"B"	"C"	"D"	"E"	
	10mm	MHIS010	10.0	16.013	20.0	34.7	
	13mm	MHIS013	11.5	20.013	25.0	34.7	
	16mm	MHIS016	13.0	20.013	25.0	34.7	
	20mm	MHIS020	15.0	20.013	25.0	34.7	
	25mm	MHIS025	17.5	20.013	25.0	34.7	
	*32mm	MHIS032	21.0	20.013	25.0	34.7	
	*40mm	MHIS040	25.0	20.013	25.0	34.7	
<b>Light Duty</b>	6mm	MLIS006	6.5	12.013	15.0	25.7	
	10mm	MLIS010	9.0	14.013	17.0	25.7	
	13mm	MLIS013	10.5	14.013	17.0	25.7	
	16mm	MLIS016	12.0	14.013	17.0	25.7	
	20mm	MLIS020	14.0	16.013	19.0	25.7	
	25mm	MLIS025	16.5	16.013	19.0	25.7	
		*32mm	MLIS032	20.0	16.013	19.0	25.7
		*38mm	MLIS038	23.0	16.013	19.0	25.7

*\*Tolerance for these punch hole sizes is +.008/+015*



	PUNCH Ø	INSERT	INSERT Ø	HEAD Ø	LENGTH	
<b>Heavy Duty</b>	"P"	PART #	"D"	"H"	"L"	
	10mm	MHIS010	16	19.6	34.7	
	13mm	MHIS013	20	24.6	34.7	
	16mm	MHIS016	20	24.6	34.7	
	20mm	MHIS020	20	24.6	34.7	
	25mm	MHIS025	20	24.6	34.7	
	32mm	MHIS032	20	24.6	34.7	
	40mm	MHIS040	20	24.6	34.7	
<b>Light Duty</b>	6mm	MLIS006	12	14.6	25.7	
	10mm	MLIS010	14	16.6	25.7	
	13mm	MLIS013	14	16.6	25.7	
	16mm	MLIS016	14	16.6	25.7	
	20mm	MLIS020	16	18.6	25.7	
	25mm	MLIS025	16	18.6	25.7	
		32mm	MLIS032	16	18.6	25.7
		38mm	MLIS038	16	18.6	25.7



Contact your Impax Tooling Solutions Sales Engineer or call our Sales Desk at **800-944-4671** • [impaxtoolingsolutions.com](http://impaxtoolingsolutions.com)