



# Southern California Orchid Species Society

[www.socalorchidspecies.com](http://www.socalorchidspecies.com)

**Officers**  
President

Darrell Lovell  
[dallevol@yahoo.com](mailto:dallevol@yahoo.com)

Vice President

Barbara Olson  
[barstan50@hotmail.com](mailto:barstan50@hotmail.com)

Society Secretary

Edie Gulrich

Membership Secretary

Edie Gulrich  
[egulrich@att.net](mailto:egulrich@att.net)

Treasurer

Susan Scheffler

**Directors**  
2015

Daniel Geiger  
Ed Wise

2014

Roberta Fox  
Dana Seelig

2013

Phyllis Adams  
Tim Roby

Orchid Show Representative

Barbara Olson  
Yolanda Brown

Orchid Digest Representative

Barbara Olson  
[barstan50@hotmail.com](mailto:barstan50@hotmail.com)

Refreshments Coordinator

Yolanda Brown

Raffle Coordinator

Open

Newsletter

Roberta Fox  
[roberta@orchidcentral.net](mailto:roberta@orchidcentral.net)  
(714)435-8015

Newsletter deadline is the 25th  
of the month prior to the month  
of issue.

Meeting is 2nd Sunday of each month, at 2 PM  
Placentia Library  
411 E. Chapman Ave, Placentia  
(Corner of Chapman and Kraemer)

Volume 36, Issue 1  
January, 2013

*January 13, 2013*

## Masdevallia - Coccinea Section: Species, Hybrids, and Culture

*Theresa Hill*

Theresa Hill is a partner in Hillsview Gardens, located near Portland, Oregon. The nursery has been in operation since 1985, and specializes in Paphiopedilums, Miltoniopsis, and Masdevallias. The focus has been on the creation of cutting-edge hybrids both for the hobbyist and in wholesale quantities for retail nurseries. But as native habitats continue to decline, Hillsview Gardens also realized its responsibility to make available rare and endangered species from seed-grown outcrosses. The hybrid breeding program has produced over 100 American Orchid Society awards, including four FCC/AOS, a Gold Certificate, seven Awards of Quality, and also a Bronze Award at the 16th World Orchid Conference in Vancouver, BC,

Theresa will discuss the species of the Coccinea Section of the genus Masdevallia, as well as some of the hybrids. She will also discuss the cultural requirements of this group of orchids.



*Masdevallia coccinea*

## Speaker's Choice

December speaker Daniel Geiger selected *Phalaenopsis lobbii*, grown by Peter Lin, as his Speaker's Choice. He noted that this mounted plant was growing the way *Phalaenopsis* grows in nature. The large number of healthy green roots indicates that this is its preferred culture. Peter grows *Phalaenopsis lobbii* in a greenhouse whose temperature can go as low as 45 degrees F.

This species originates in the Eastern Himalayas in Bhutan, northeastern India, Myanmar (Burma), Vietnam, and southwestern China. In India, it has been found at altitudes from 1200–1500 ft (370-460 m). *Phalaenopsis lobbii* grows on especially rough-barked trees, with decaying matter in the fissures where the roots grow. (Ref. Charles Baker, in [Orchidwiz](#).) The Baker Culture Sheet indicates that in the area where this species occurs, the temperature range can be 100 deg. F to 33 deg. F. This is a much hardier species than the tropical ones in the background of the ornamental *Phalaenopsis* hybrids with which we are all familiar! During the colder months, rainfall in its habitat is low. In cultivation, if it is cold it should be kept drier, but never goes completely dry.

Note the intricate fringes on the lip, especially in the close-up view.



*Phalaenopsis lobbii*

---

## From the Member's Corner

Thank you to those who brought scrumptious goodies for the installation of officers. Thank you most of all to those who have stepped up to keep this Society moving forward, vibrant and enjoyable for everyone. Welcome to our visitors Katie and Jim Wood, guests of Marianne and Jack Keating, we'd love to see you again very soon. Remember dues are due January 1st, but you can pay at the January meeting or send it in to me, whichever works for you. The roster will be available at the March meeting. Happy Holidays to all.

*Edie Gulrich, Membership Secretary*

---

## President's Message

Hello everyone,

Well, we definitely ended the year on a high note with guest speaker Daniel Geiger. He showed us how to take stunning pictures of orchids, either at home or in the wild. He also had some fascinating pictures he had taken with an electron microscope.

Some of the highlights of the past year included a host of interesting and informative guest speakers; a very successful auction; and a great sharing of information and techniques in our "show and tell" segments. I would like to extend a great big thank you

to our vice president Barbara Olson for scheduling our monthly speakers, to Edie Gulrich for all her help and know-how, to Susan Scheffler for making sure everything flows financially; to Roberta Fox for producing a fantastic monthly newsletter; and to the board members and general membership for making 2012 a great year.

May your orchids bloom abundantly in 2013!

*Darrell Lovell, President*

### A note from Phyllis Adams:

Dear SCOSS Members;

This has been a very hard year for me and I want to thank everyone for their support, and thoughts and prayers, and especially for all the great orchid cards. I know Doug will be missed by everyone and I want you to remember how much he enjoyed the meetings and how much happiness he got from babying his 'slabbies'!

Phyllis

(similar to what I have for shade areas) but instead of shade cloth, I used corrugated clear plastic material that is designed for patio covers. Neither type of area will keep plants totally dry if rain is accompanied by wind, but it's dry enough to serve the purpose. Last winter I discovered that some members of the Cattleya tribe also benefited from some reduction of water, especially *Rhyncholaelia digbyana*, *Enclia citrina*, *Encyclia mariae*, and *Cattleya walkeriana*. I gave those a little more water than the nobile-type *Dendrobiums*, but still less than the general population. The result was much better blooming than in the past.

We also have to be somewhat concerned about rain, especially when the cloud cover clears rapidly during the night leading to a sharp temperature drop when things are wet. That's a formula for botrytis spots on flowers, and rot on new growth. You may want to protect plants that are in bud or bloom that otherwise wouldn't need it, just to keep the flowers from getting damaged. If it isn't raining, remember that when it is cold, plants won't dry out as fast as they would during the summer so don't be too eager to water, and wait until the morning temperature gets above 50 deg. F or so before even thinking about it.

Of course this is the time of year when *Cymbidiums* dominate. When I'm wrestling with big pots, or just trying to find room for plants, I tell myself that I should really cut down on the Cyms. Then they start blooming, and I fall in love with them all over again. My all-time favorite *Cymbidium* species is *Cym. tracyanum*. It is fragrant (reminds me a bit of ripe peaches) and has a wonderful fuzzy lip. It's not likely to make it to a meeting, since it wants to be huge. It is over the edge of a 2-gallon pot. I think that

See: **Editor's Potting Bench**, Page 4

## Editor's Potting Bench

Having finally gotten past the "summer-that-wouldn't end", it's winter. Having seen no sign of "slowing down" on the part of the nobile-type *Dendrobiums* or the *Catasetinae*, I am pushing them in the direction of winter rest by greatly reducing water and ceasing fertilizer. I decided that if I waited for them to volunteer dormancy due to cooling weather and lower light, I was going to run out of time before growing season comes back in about two months. In the case of *Catasetinae*, that was just a matter of moving them to one end of my greenhouse, and remembering to stay away from them with the hose. The sprinklers don't reach that area. For the *Dendrobiums* that live outside, they not only had to be gotten away from the sprinklers, but also out of the rain. Those of you who have been to my house, recall the wire shelves that are near the greenhouse. Those received new plastic covers. In addition, I built a covered area for a few hanging plants, by building a frame with conduit



**Editor's Potting Bench, from Page 3**

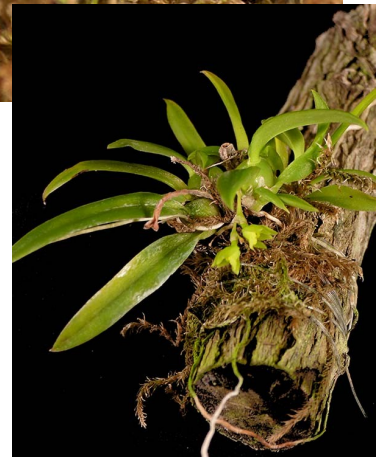
upon repotting, it is going into a 3-gallon one, I will find a spot where I can see it when it blooms, and then it isn't going to move any time soon.

Especially if you grow little plants (and I think most of us do) remember to look at them often, and carefully. I found *Capanemia theresae* in bloom when checking my little mounted plants at the back of my growing area. It's not one that jumps out., but



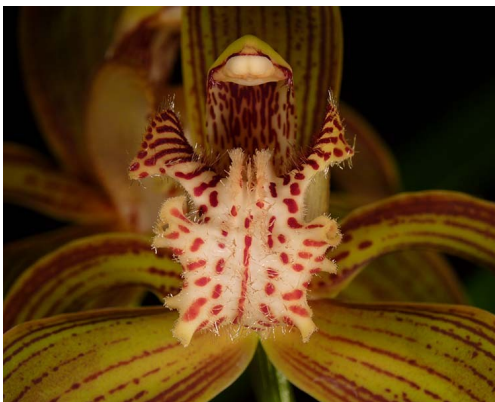
**Capanemia  
theresae**

n't do it for the December meeting. This is one of those plants with very tiny flowers that is best appreciated in a photograph, anyway



**Cymbidium  
tracyanum**

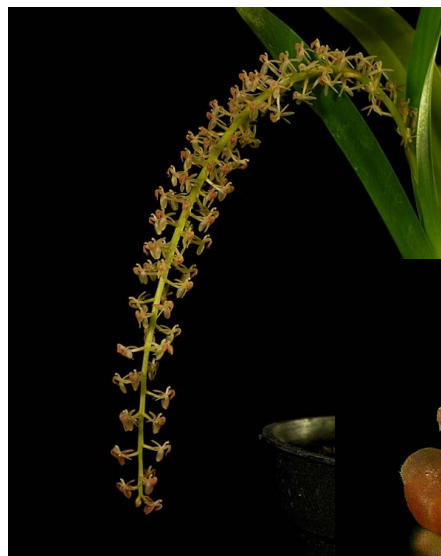
charming nonetheless. Flower is a bit over 1/8" wide, which makes it a bit of a challenge to photograph with



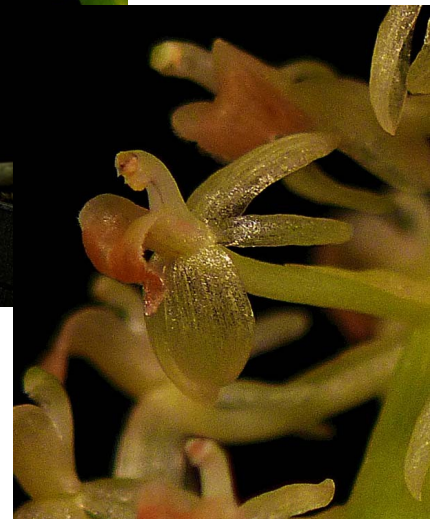
the equipment that I have. (Getting close to a decision to plunge into the DSLR market to get a proper macro lens, but not there yet). The whole plant is about 2". It's a member of the Oncidium Alliance, certainly a "not exactly a household name" genus. It is native to the mountains of Brazil, and grows outside very nicely.

One more little gem to share is *Liparis parviflora*. This one grows in the greenhouse. It produced five spikes, but only one opened at a time, and it just did-

*Roberta Fox, Editor*



**Liparis parviflora**



## Calendar of Events

\* See flyer at [www.socalorchidspecies.com](http://www.socalorchidspecies.com), select the [Events](#) link

- **Orange County Orchid Society Annual Auction\***  
January 16, 2013—6:30 PM preview, 7:00 PM Auction begins  
Yorba Linda Public Library Community Room (lower level)  
18181 Imperial Highway, Yorba Linda  
Info: Jan Hennessey [janhennessey@yahoo.com](mailto:janhennessey@yahoo.com) (714)557-0604 or Edie Gulrich [egulrich@att.net](mailto:egulrich@att.net)
- **San Diego County Cymbidium Society Annual Auction\***  
January 19, 2013—11:30 AM preview, 12 noon Auction begins  
Lake San Marcos—Lake Pavilion, 1105 La Bonita Dr., San Marcos  
Info: [orchldy2@mac.com](mailto:orchldy2@mac.com) or (760)732-0055
- **Newport Harbor Orchid Expo\***  
“Show Us Your Bloomers”  
February 8-10, 2013—Friday 10 AM-9 PM, Saturday 10 AM-7 PM, Sunday 11 AM-6 PM  
Westminster Mall (Macy’s Wing), off the 405 freeway at Bolsa  
Info: [www.nhosinfo.org/shows/2013/home.html](http://www.nhosinfo.org/shows/2013/home.html)
- **Newport Harbor Orchid Society Annual Auction**  
February 19, 2013—6:30 PM preview, 7 PM Auction begins  
Costa Mesa Community Center, 1845 Park Ave., Costa Mesa
- **Pacific Orchid Exposition\***  
February 23-25, 2013  
Fort Mason Center, San Francisco  
Info: [www.orchidsanfrancisco.org](http://www.orchidsanfrancisco.org)
- **Santa Barbara International Orchid Show\***  
March 8-10, 2013  
Earl Warren Showgrounds, Santa Barbara  
Info: [www.sborchidshow.com](http://www.sborchidshow.com)

---

### 2013 NEWPORT HARBOR ORCHID EXPO AND SALE

*Nancy Benay*

Come enjoy a week-end of orchids at this year’s 12<sup>th</sup> Annual Orchid Expo and Sale hosted by the Newport Harbor Orchid Society. (See Calendar of Events, above, for information) Two large exhibit areas will feature displays by area orchid societies, individual hobbyist and vendor displays. And whether you grow species or hybrids, you can indulge yourself with new orchids in the vendor sales area.

Check the website <http://nhosinfo.org/shows/2013/home.html> for late-breaking updates to participant lists.

---

**These vendors have generously supported our Society at the last Auction, and throughout the year. Please support them with your business. When you visit them, let them know that you are a member of our society. They need to know that our Society supports them.**

<p>Andy's Orchids Contact: Andy &amp; Harry Phillips 734 Oceanview Ave Encinitas, CA 92024 760-436-4235, www.andysorchids.com</p>	<p>Cal-Orchid Contact: James Rose 1251 Orchid Dr Santa Barbara, CA 93111 805-967-1312, www.calorchid.com</p>	<p>Cal-West Tropical Supply Contact: Brad &amp; Ryan Wicks 11614 Sterling Av Riverside, CA 92503 951-351-1880, www.calwesttropical.com</p>
<p>Casa de las Orquideas Contact: Nancy &amp; Karl Batchman 170 S Nardo Av Solana Bch, CA 92075 858-755-7572, www.orquideas.com</p>	<p>Diamond Orchids Contact: Peter Lin 834 Featherwood Dr Diamond Bar, CA 91765 909-396-0334, www.diamondorchids.com</p>	<p>Ecuagenera Contact: Ivan Portilla PO Box 01011110 Cuenca, Ecuador www.ecuagenera.com</p>
<p>Lico Orchids Contact: Lisa Humphries &amp; Nico Goosens 309 Via Nancita Encinitas, CA 92024 760-942-4143</p>	<p>Marcel's Contact: Sonora Winward 5133 Kildee St. Long Beach, CA 90808 562-843-5951</p>	<p>Mariposa Garden Contact: Ron Hill 6664 South St Lakewood, CA 90713 562-920-5588, www.mariposagarden.com</p>
<p>Mr. Fertilizer Contact: Don Knipp 247 23rd St Costa Mesa, CA 92626 949-548-2678</p>	<p>Orange County Farm Supply Contact: Chris Roy 1826 W Chapman Av Orange, CA 92868 714-978-6500, www.ocfarmssupply.com</p>	<p>Orchids by Zeny Contact: Zeny Harrington 22920 Cajalco Rd Perris, CA 92570 951-236-0291</p>
<p>Orchids of Los Osos Contact: Michael Glikbarg 1614 Sage Ave. Los Osos, CA 93402 805-528-0181, www.orchidsoflososos.com</p>	<p>OrchidWiz 145 NE 95th Street Miami Shores, FL 33138 305-758-3596, www.orchidwiz.com</p>	<p>Outdoor Images Contact: John Remlinger 6961 Livingston Dr Huntington Bch, CA 92648 714-841-0442, www.orchidbasket.com</p>
<p>Paphanatics Contact: Norito Hasegawa 159 Monterey Rd Orange, CA 92866 714-639-1387</p>	<p>rePotme.com Orchid Mixes and Supplies 10608 Floral Park Lane North Potomac, MD 20878 301-315-2344, www.repotme.com</p>	<p>Santa Barbara Orchid Estate Contact: Alice &amp; Parry Gripp 1250 Orchid Dr Santa Barbara, CA 93111 800-553-3387, www.sborchid.com</p>
<p>Seed Engei Contact: Satomi Kasahara 1622 Moreno St Oceanside, CA 92054</p>	<p>Sorella Orchids Contact: Nenita Sorella 100 Frenchys Cove #71 Camarillo, CA 93012 360-607-9342, www.sorellaorchids.com</p>	<p>Sunset Valley Orchids Contact: Fred Clarke 1255 Navel Pl Vista, CA 92083 760-639-6255, www.sunsetvalleyorchids.com</p>
	<p>The Rowland Collection Contact: Pat Rowland 12446 S Georgian St Garden Grove, CA 92841 714-892-3502</p>	