

## **X7 Oscar Wireless Gaming Mouse**

Model: XG-760

[www.a4tech.com](http://www.a4tech.com)

**THIS DEVICE COMPLIES WITH PART 15 OF THE FCC RULES. OPERATION IS SUBJECT TO THE FOLLOWING TWO CONDITIONS: (1) THIS DEVICE MAY NOT CAUSE HARMFUL INTERFERENCE AND (2) THIS DEVICE MUST ACCEPT ANY INTERFERENCE RECEIVED, INCLUDING INTERFERENCE THAT MAY CAUSE UNDESIRE OPERATION.**

**Federal Communications Commission Requirements**

The equipment has been tested and found to comply with the limits for Class B Digital Device, pursuant to part 15 of the FCC Rules. These limits are designed to provide reasonable protection against harmful interference in a residential installation. This equipment generates uses and can radiate radio frequency energy and, if not installed and used in accordance with the instruction, may cause harmful interference to radio communication. However, there is no guarantee that interference will not occur in a particular installation. If this equipment does cause harmful interference to radio or television reception, which can be determined by turning the equipment off and on, the user is encouraged to try to correct the interference by one or more of the following measures:

- Reorient or relocate the receiving antenna.
- Increase the separation between the equipment and receiver.
- Connect the equipment into an outlet on a circuit different from that to which the receiver is connected.
- Consult the dealer or an experienced radio/TV technician for help.

**THE CHANGES OR MODIFICATIONS NOT EXPRESSLY APPROVED BY THE PARTY RESPONSIBLE FOR COMPLIANCE COULD VOID THE USER'S AUTHORITY TO OPERATE THE EQUIPMENT.**

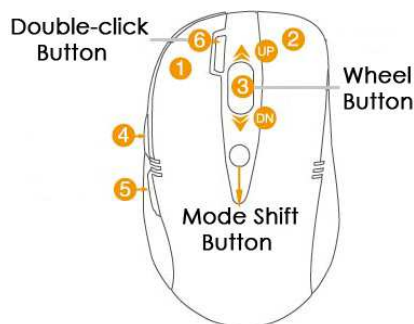
This device complies with Part 15 of the FCC Rules. Operation is subject to the following two conditions:

- (1) This device may not cause harmful interference, and receiver.
- (2) This device must accept any interference received, including interference that may cause undesired operation.

**FCC Radiation Exposure Statement**

The equipment complies with FCC radiation exposure limits set forth for uncontrolled equipment and meets the FCC radio frequency (RF) Exposure Guidelines in Supplement C to OET65. The equipment has very low levels of RF energy that it is deemed to comply without testing of specific absorption ratio (SAR).

## Mouse Button Diagram



## Hardware Installation

<p>1). Connect the Multi-link receiver Take out the Multi-link receiver from bottom of the mouse and connect it to your computer or Notebook.</p>	
<p>2). Insert the batteries Push down the mouse cover to open the battery cover and insert the supplied batteries. Please make sure the positive (+) and negative (-) ends of the battery match the polarity indicators inside the battery compartment.</p>	
<p>3). Turn on your Mouse Push the power switch to ON position and turn on your mouse. &gt;&gt;Then LED light at the bottom of the mouse is on immediately.</p>	

## Software Installation

X7 Oscar mouse editor offers 2 flexible ways to install the driver, Normal Installation and Mobile Execution. X7 Oscar mouse editor main program has a special feature that it can be executed directly without the need to install the software to Windows system. This is convenient when you are using a public computer and installing mouse driver to the system is prohibited or restricted. In such circumstances, you do not need to install the mouse driver, but just run the X7 Oscar's main program directly from your storage device, e.g., a memory stick.

### Normal Installation

<p>1). Uninstall any mouse software on your system. 2). Insert enclosed CD to start installation and follow the on-screen instructions to finish the software installation. You may manually double click the "auto-run" program if execution does not automatically start. 3). The shortcut icon "X7" will appear on your desktop screen, and then you have successfully installed the software. (Otherwise, installation is failed and you have to remove the software and re-install.)</p>	
<p><b>To remove the software, follow the below steps:</b> Go to START&gt;&gt; PROGRAMS &gt;&gt; A4TECH Software &gt;&gt; "X7 Oscar Mouse Editor" &gt;&gt; "Uninstall X7 Oscar Mouse Editor", see figure on the right.</p>	

## X7 Oscar Mouse Editor

The screenshot shows the main menu of the X7 Oscar Mouse Editor. At the top left, it says "X7 WINNER'S CHOICE". Below that is a "File" menu and a "My individualized mouse" button. To the right, there's a "Mode 1" dropdown and a "Mode Name/Select" button. The main area is divided into two columns: "Definition" and "Description". The "Definition" column lists mouse buttons and their current settings, with orange callout boxes 3, 4, 5, and 6 pointing to specific entries. The "Description" column shows the corresponding descriptions for these buttons. At the bottom left, there's a mouse icon with callout boxes 2 and 6. At the bottom right, there are buttons for "Save" and "Apply".

**Mode Number:**  
Select a mode number to edit.

**Mode Name/Select:**  
Name a new mode or select modes to use.

**Mouse Button Definition:**  
Display current mouse button settings or setup new settings to mouse buttons.

**Description of Reminder:**  
Enter short description here for each button setting, which will be displayed later as the reminder on the screen.

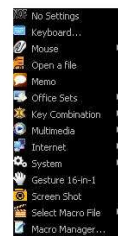
Save new settings to receiver and apply the new settings immediately.

**X7 Oscar Mouse Editor**  
Tailor-made to Dominate the Play  
Version 10.07V3

**Main Menu of XG Oscar**

## Button Settings and Relevant Functions

Click any "button definition area" on the main menu; you will see the function listing as shown below. According to your preference, you may select one of them as the button setting. You also can enter a short description on the "Description of reminder" area, which will be displayed on the screen when it is activated as the reminder.



### No Settings

There is no button setting being defined.

### Keyboard...

You may setup the mouse button to simulate a keyboard's keystroke, or a key combination with "Win", "Ctrl", "Shift" and "Alt", then followed with any keystroke on the keyboard, and then assign it to the designated mouse button.

### Mouse

Except mouse left button, you may setup any of mouse buttons to be one of "mouse left button, mouse right button, mouse middle button, mouse 4<sup>th</sup> button, mouse 5<sup>th</sup> button, wheel up and wheel down".

### Open a file

One click to open a program file or a document. You may setup any of mouse buttons of 2, 3, 4, 5, 6, wheel up(UP) and wheel down(DN) with "Open a File" function.

#### Usage:

- 1). Select "Open a file" from the pull-down button menu as figure A shows.
- 2). A screen of file listings will pop up as figure B shows.
- 3) Select one of the files that you would open it with the associated button and click "Open".
- 4) Now you can see the file you selected has been assigned to the button.
- 5) Click "Apply" to save the new button setting.

#### Example:

While in the session of a meeting or teaching, it is embarrassing to keep others waiting due to searching for a document, or look up for a program or a shortcut. With "Open a File" function, you may have better way to resolve this issue. By setting up each button in association to the document, program or shortcut, all you need to do is to shift to the mode and click each mouse button to open all the files instantly. You may also open an on-line reminder to check each mouse button association details.

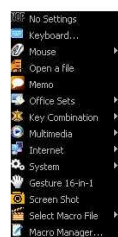


Figure A

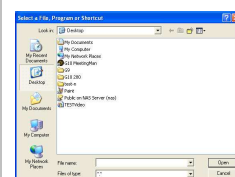
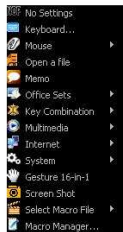



Figure B

## Memo

See below "Memo" section in more details.

One click to open the Memo screen and list out all the current button settings as the reminder. You may setup any of mouse buttons of 2, 3, 4, 5, 6, wheel up(UP) and wheel down(DN) with "Memo" function.

<p>Usage:</p> <ol style="list-style-type: none"><li>1). Select "Memo" from the pull-down button menu as figure C shows.</li><li>2). Click "Apply" to save button setting.</li></ol>	 <p>Figure C</p>
<p>Example:</p> <p>This function is useful during the session of a meeting or teaching, when you are not very sure which button is associated with the function you need.</p> <p>Click the "Memo" button will bring the "Memo" screen as figure D shows. Now you can check each button setting and activate them immediately.</p> <p>For instance, the teacher can open all the handout documents in seconds by clicking the button in association with the mouse buttons.</p> <p>The Memo function is available for mouse button 2, 3, 4, 5, 6, Wheel up(UP) and Wheel down (DN).</p>	 <p>Figure D</p>

## Office Sets

You may setup any one of Office command sets such as: "Zoom In, Zoom Out, Paste Text, Double Click and Treble Click" to the mouse buttons.

Zoom In/Out: One click to perform zoom in or zoom out function, applicable to CAD, ACDSsee, Windows or text editing programs.

Paste Text: One click to perform "Select, Copy & Paste" texts, it turns office jobs can never be so simple.

## Key Combination

Quick access to Office commands of key combinations, such as: Cut, Copy, Paste, Delete, Search, Select All, Redo, Undo, New File, Open File, Save File, Print...etc.

## Multimedia

Quick access to Multimedia commands, such as: Media Player (Open), Previous, Next, Stop, Play/Pause, Mute, Volume+, Volume-...etc.

## Internet

Quick access to usually used Internet commands, such as: Backward, Forward, Stop, Refresh, Search, My Favorite, Web Browser, E-mail...etc.

## System

Quick access to Windows commands, such as: Open Calculator, Open My Computer, Sleep, Power Off...etc.

## Gesture 16-in-1

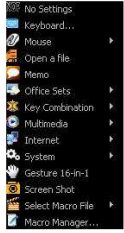
This 16-in-1 mouse utility offers 16 directions to draw the lines with the mouse and the preset commands will be executed immediately. Note that

this gesture function is only available for mouse button  and . See more details on the Gesture 16-in-1 section.

### Screen Shot

Button / /  can be set as "Screen Shot". One click to take a screenshot of a chosen area of the screen or video and quickly share with others.

### Screenshot Usage

<p>Configure your screenshot button:</p> <ol style="list-style-type: none"><li>1. Open the Main Menu and choose any of mouse buttons <input type="checkbox"/>, <input type="checkbox"/> or <input type="checkbox"/> as "Screen Shot" function.</li><li>2. Select "Screen Shot" from the pull-down button menu(Shown as right).</li><li>3. Click "Apply" to save the setting</li></ol>	
<p>Take a screenshot</p> <p>Press the screenshot button and move the mouse to choose the area you want to capture (A dashed pane will show up), then release the button to take a screenshot.</p> <p>Paste</p> <p>Press "Ctrl + V" on the keyboard to paste your screenshot in any of your applications!</p> <p>Edit/Save</p> <p>Save or edit the captured image in paint software</p> <p>Screen Shot – Ideal for office and internet uses</p> <p>One click to take a screenshot of a chosen area of the screen or video and quickly share with others.</p>	

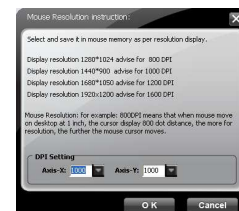
### Select Macro File

There are many useful macro functions you may choose from, including commands for PowerPoint(PPT) / Media Center Edition(MCE) / Gaming(CS) ...etc. They are backward compatible with X7 Oscar file format, and can be downloaded from the website: <http://www.x7.cn>.

### DPI Setting

Customizable and independent 3,200 DPI resolution for each X and Y axes.

XG Oscar offers customizable and independent resolution for each X and Y axes that best suits various LCD resolutions, in particular, it is crucial for some game plays.

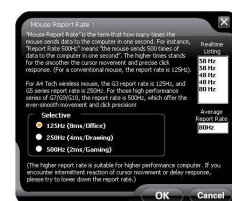


## DPI Levels & Color Indicator

DPI Levels (Default)		Indicator Color	Suitable Resolution of display (Recommended)	Recommended for:
DPI 1:	400DPI	No light	800x600	Slow-Speed and normal accuracy player
DPI 2:	800DPI	Green	1024x768	Medium-Speed and average accuracy required player
DPI 3:	1,200DPI	Yellow	1152x864	Fast-Speed and above average accuracy required player
DPI 4:	1,600DPI	Red	1280x960	High-Speed and pinpoint accuracy required player
DPI 5:	2,000DPI	Red & Yellow	1280x1024	Extra High-Speed and pinpoint accuracy required player
DPI 6:	3,600DPI	Yellow& Green	1280x1024	Extra High-Speed and pinpoint accuracy required player

## Report Rate

Mouse Report Rate is the term that how many times the mouse sends data to the computer in one second. For instance, "Report Rate 500Hz" means "the mouse sends 500 times of data to the computer in one second". X7 Oscar offers 3 report rates, e.g., 125Hz, 250Hz and 500Hz respectively. The higher times stands for the smoother the cursor movement and precise click response, especially suitable for game play, which requires high speed and quick response. (For a conventional mouse, the report rate is 125Hz). For the 5 working modes, the report rates are preset according to various applications, as shown below:



According to various applications, the bandwidth is divided into 3 report rate levels:

**1X Speed:** USB report rate is 125Hz, suitable for office and general users, power consumption is the lowest.

**2X Speed:** USB report rate is 250Hz, suitable for CAD users, power consumption is normal.

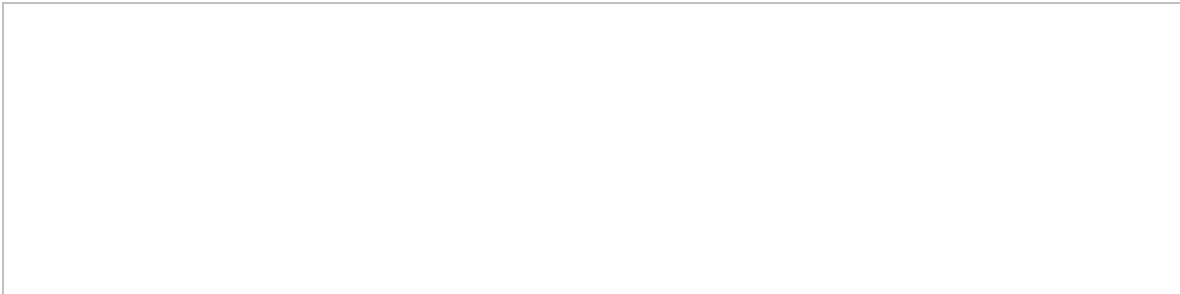
**4X Speed:** USB report rate is 500Hz, suitable for heavy-duty game players, power consumption is high.



## Gesture 16-in-1

On the button definition area of Main menu, click "▼" of button □ or □, you will see the "Gesture 16-in-1" on the function listing as shown on the right.



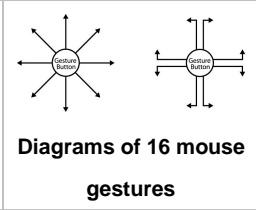





The "Gesture 16-in-1" offers customizable 16 functions in 1 click with gesture button. You may setup 16 most-frequently-used commands to the Gesture buttons  or  from 6 categories, more than 30 commands, including Keyboard, Mouse, Hyperlink, Office, Text, Multimedia, Internet and Key Setting Reminder. Using the mouse to draw the lines as any of 16 preset directions, the corresponding command will be executed immediately. It adds powerful and handy tools in Windows operation, and increases your working efficiency dramatically.


**Usage**

Press and hold the gesture button to draw any of 16 lines and directions as shown on the right, then release the button. The corresponding commands will be executed immediately, including Keyboard, Mouse, Hyperlink, Office, Text, Multimedia, Internet and Key Setting Reminder, which can be preset and store to your receiver memory.




**Example 1:**


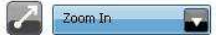
Using  as "Zoom In" command by default, when you are viewing a picture with ACDSee, or browsing a PPT file in the Office, or Reading a PDF file...etc, just pressing the "Gesture Button" and draw the line as shown below, then release the button, the picture or the document will be zoomed in immediately.

	<p>a. Start: Press the "Gesture Button"</p> <p>b. Track of the drawing line: Draw the line as the  arrow direction</p> <p>c. End: Release "Gesture Button"</p> <p>Then the picture has been zoomed in.</p>
--	---

**Example 2**

See the contrast in EXCEL after drawing the line.

Now let's take "" as example to show you how to use these functions :

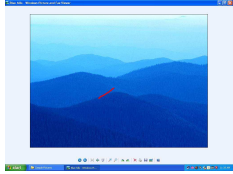
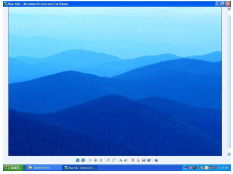
1. Select "" icon to represent "Zoom In" as shown: 
2. Click "**OK**" to close the setup screen.

3. Click "Apply" to save to receiver's memory.

4. Draw the line in Excel.



Original				After drawing the line, the column has been enlarged			
	A	B	C		A	B	C
1				1			
2				2			
3		Hello		3		Hello	
4				4			
5				5			
6				6			

Draw the line in Windows Picture and Fax Viewer

Original		After drawing the line, the column has been enlarged	
			

### Task Listing of X7 Oscar Mouse Editor

There are 2 ways will display the working mode number when it is shifted:

<p><b>Display 1:</b> When the mode is shifted, the memo screen will be displayed on the screen center to remind current mode number information as shown on the right.</p>	
<p><b>Display 2:</b> Meanwhile, the small icon on the system tray will shift with mode numbers <b>1 2 3 4 5</b>. For example, <b>1</b> implies current working mode is in "Mode 1, Office" as shown on the right.</p>	

Left or Right click on the icon "1" at your system tray, you will see "X7 Oscar Task Listing" pops up as shown on the right.



Following will brief each task and its functionality.

**Auto Launch on Boot:** If this task is selected, X7 Oscar Mouse Editor will be auto-executed when the system boots up.

**Mouse-Control Panel:** Select "Mouse-Control Panel" will open "Mouse Properties" setup screen of your Windows system, e.g., you may setup mouse pointers and other often -used mouse settings.

## 4-way Wheel



A. The 4-way Wheel is the latest scrolling technology. It splits working screen into 2 areas, A and B as shown above. Depending on cursor position, the wheel will perform vertical or horizontal scrolling. For instance, when the cursor locates within A area, the wheel will perform vertical scrolling, and when the cursor locates within B area, the wheel will perform horizontal scrolling. It saves tremendous works instead of pulling the scrollbars, especially when working with Excel spreadsheet.

B. In practice, you may click and move the Red split icon to change the ratio of A and B areas. You may perform Vertical and Horizontal scrolling by just moving the cursor in and out of A or B areas, which saves a lot of efforts than pulling Windows' scrollbars!

**Note:** If the option of "Normal Wheel" is selected, the wheel will perform as a normal mouse wheel, and "4-way Wheel" function won't be launched.

## Function/Key Reminder

You may setup "Function/Key Reminder" as shown on the right. The small "Radar" is the icon you may click and move to the position you wish to display the reminder screen.



## Power Management

Click the icon "" at your system tray and select "Power Management" to define wake-up modes and sleeping time. According to the stand-by status, the intelligent power-saving management supports "Slight, Little, Middle & Deep" 4 working modes. User may define the time interval to enter into the Deep Sleeping Mode, and 6 seconds enter into Deep Sleeping Mode after the PC is power off.

### Move to Wake Up:

This is convenient to awake the mouse, and it consumes 0.35mA current when in stand-by status.

### Click to Wake Up:

This requires a click to awake the mouse, yet it consumes as less as 0.03mA current in stand-by status.



### Check Battery power:

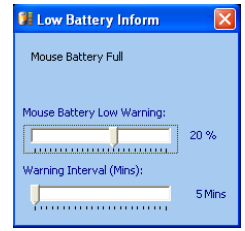
Click "Check Power" in "power-saving management" to check the battery power status.

### Low Battery Inform:

When the mouse power is low, Low Battery Inform page will pop up at the right corner of your screen to remind you to replace the batteries in time.

### Note:

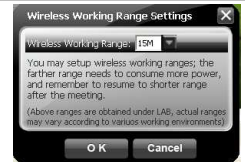
Light color mouse pads can save more power than deep color ones. 500Hz full speed in the gaming mode will consume much more power. Rechargeable batteries are recommended for intensive mouse users, and always turn-off the mouse power when long time not use.



### Wireless Working Range Setting

You may setup wireless working ranging within 15~20 meters; the farther range needs to consume more power, and remember to resume to shorter range after the meeting.

In the circumstances that there is wireless conflict nearby or the meeting room is the huge one, adopting a USB extension cable for the receiver will improve and secure better communication quality.



### Best Wireless Signal Monitoring

Click on the icon at your system tray and select "Best Wireless Signal Monitoring" to indicate RF signal and help to find the optimal location to avoid RF interference.

### Search and Keep away from Wireless Conflicts:

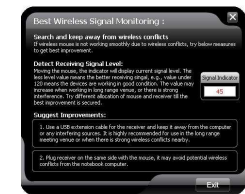
If wireless mouse is not working smoothly due to wireless conflicts, use wireless signal monitoring to monitor and improve the signal level and get best improvements.

### Detect Receiving Signal Level:

Moving the mouse, the indicator will display current signal level. The less level value means the better receiving signal, value under 120 means the devices are working in good condition. The value may increase when working in a long range venue, or there is strong interference. Try different allocation of mouse and receiver till the best improvement is secured.

### Suggest Improvements:

1. Use a USB extension cable for the receiver and keep it away from the computer or any interfering sources. It is highly recommended to use it for the long range meeting venue or when there is strong wireless conflict nearby.
2. Plug receiver on the same side with the mouse, it may avoid potential wireless conflicts from the notebook computer.



## ID Pairing Program

### Effective Meeting:

Multi-link receiver is designed with memory, The “New Mice/KBs ID Pairing” program allows to link up to 3 sets XFAR G3/ G5/ G7/ G9/ G10 series of mice & KBs to operate on the same computer. The “A4tech G-Family” program provides the best sharing of meeting to consolidate all member intelligences.


### Portability:

The Multi-link receiver allows to link up to 3 sets XFAR G3/ G5/ G7/ G9/ G10 series of mice & KBs. You may leave it installed on your notebook and use any paired mice and keyboards at home or in the office.



### Note:

The red-colored of Multi-link receiver is also available with single gift box. It is back compatible and supports A4Tech's G3, G5, G7 and G10 series, making them reunion as a family. Note that functions of multiple buttons will be restricted for those limited buttons of some back models. And Multi-link function does not applicable to G6 series.

Click “” will start to add new mice and keyboards. (For better operation, you may need another mouse to perform ID pairing before the wireless mouse is applicable).

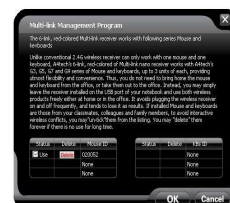
The Multi-link, red-shelled receiver may works with up to 3 sets of mice and keyboards simultaneously. With each attendant a mouse in hand, it increases efficiency. See more details on below “New IDs for Mice/KBs” and “How to Add a New Device Using New Mice/KBs ID Pairing” sections. If more mice or keyboards are used in working, please pair the new mice/KBs.

### Into G-Family Management:

In this section, you will be able to manage the linked mouse and keyboard. Click “Into G-Family Management” will bring the management screen as shown on the right.

### Management of Linked Mice and Keyboards:

From the screen, you may see the listing of linked mice and keyboards with their IDs. You may tick or tick off the box to “Enable” or “Disable” the devices, or “Delete” them forever.

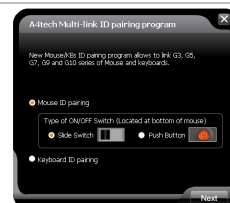


**Multi-link Management Program**

### Special Note:

Each mouse and keyboard of our series will have an exclusive ID code by default in the factory. Such ID code is derived randomly from 262,144 combinations. However, in case the ID codes duplicate, please send back the products for maintenance.

Follow on-screen instructions to perform “ID Pairing” as shown on the right, click “Next” to continue.

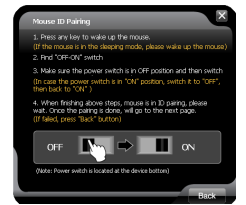


□ Press any key to wake up the mouse before "ID pairing" is performed.

>>Locate the power switch (Normally you can find it on the mouse bottom side).

>> Make sure the power switch is in OFF position and then switch it to ON position within 30 seconds. (If power switch is in ON position, switch it to OFF and back to ON position within 30 seconds).

>> After above procedure is completed, the mouse will start to perform pairing procedure with the receiver; wait for seconds, the next screen will pop up as shown after ID pairing is completed.



□.After ID pairing is completed, move the mouse and reply YES if mouse moves fine, then click NEXT. In case the ID pairing fails, click "BACK" to repeat steps 2, 3 and perform the ID pairing procedure again.

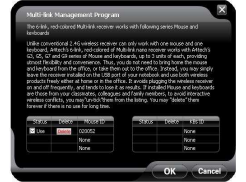


□. After above ID pairing is completed, you can follow the below steps:

1. Click "OK" to complete the ID pairing.

2. If you need to perform another ID pairing for the new devices, click "New Mice/KBs ID Pairing" again and repeat above steps 2, 3, 4 to perform another ID pairing.

After you have finished adding all the new mice and keyboards, click "Into G-Family Management" to manage the multiple mice and keyboards.



**Multi-link Management Program**

## Tailor-made the Mouse with "Macro Manager" for Each Button According to Your Needs

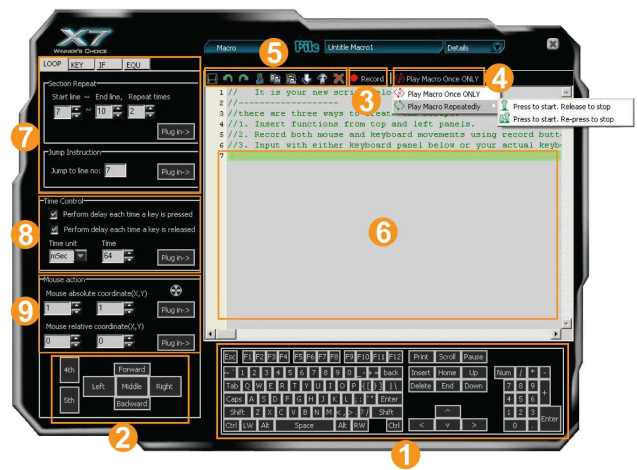
**Step 1: Launch the "Macro Manager"**(Open the Oscar Mouse Editor >> Select "Macro Manager" from the task pull-down menu of the designated button)

**Step 2: Knowing the instructions of "Macro Manager"**


- 1. Keyboard Simulation Area
- 2. Mouse Simulation Area
- 3. Record Button

When you want to record your settings, click on "3" area and:

- 1). Start to record your actions which you have done by pressing "F11" on your keyboard.
- 2). Stop to record your actions which you have done by pressing "F12" on your keyboard.



**Macro Manager Menu**

- 4. Play Macro Once Only & Play Macro Repeatedly
  - 1). If "Play Macro Once Only" is enabled, the macro settings will be performed.
  - 2). When "Play Macro Repeatedly" is enabled, two options below are available :
    - a). If "Press to start, Re-press to stop" is selected the macro will be performed while the key is pressed, it will stop till the same key is pressed again.
    - b). If "Press to start, Release to stop" is selected, the macro will be performed continuously while the key is pressed and it will stop till the same key is released.
- 5. Modify the macro settings which you have done
- 6. Macro indication Area: Indicate the macro settings which you have done. Each macro settings you do will be recorded immediately and be showed on the "Macro indication Area".
- 7. Advanced logic commands (such as: loop, skip a line, if, equal to, interval repeat, jump... etc.), it provides simple solution to edit the complicated functions.
- 8. Time Control: You may tick at the box to decide whether to set the delay time of press or release. And this panel usually is used in conjunction with mouse area or keyboard area, so that it may delay the time between each command from the other.
- 9. Mouse Actions: Mouse absolute/relative coordinate
  - Drag the  icon will capture the absolute position (X, Y) of target.
  - 1). Absolute Position of mouse cursor
  - 2). Mouse cursor's relative position

**Examples of Application in Game Play**

**Example 1:** In Windows' operation, 1click to perform "Double Click" or "One Click"


**Step 1:** Click on "Play Macro Once Only" of the "Macro Manager Menu" >>Select "Play Macro Repeatedly" >> Select "Press to start, Release to stop" as shown right.

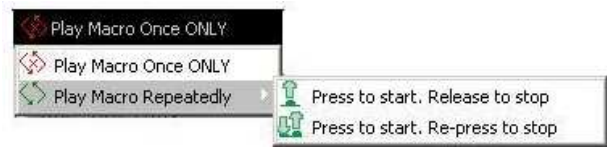
**Step 2:** Tick the box of "Perform delay each time a key is pressed" >>Select "mSec" of time unit in the "Time unit"

**Step 3:** Input "64" of time value in "Time" box. >>Click "Left" on "Mouse Simulation Area".

**Step 4:** Input "200" of time value in "Time" box. >>Click "Left" on "Mouse Simulation Area". >>Delete "Press \_Left Button" and "Release \_Left Button".

**Step 5:** Repeating steps from 4 to 5, now your editing area will look like this as figure.1 shows.

**Step 6:** Click the  icon to save the settings.



```

1 Press_left_button
2 Delay 64 Millisecond
3 Release_left_button
4 Delay 200 Millisecond
5 Press_left_button
6 Delay 64 Millisecond
7 Release_left_button
8 Delay 200 Millisecond
9

```

Fig. 1

**Let's check it in Windows' operation practically:**

When the "Designated Button" is pressed for a longer time, it will perform "double-click" and directly open the files or programs. Or, if the "Designated Button" is pressed for a shorter time, it just like the normal click and the folder is selected instead of opening it.

**Benefits:** The example shows how useful in practice that users may decide how they will use the mouse button to perform the "Double-click" or "One-click". The "Recycle Macro" of "Macro Manager Menu" allows users to freely control the time of macro programming by example 1.

**Example 2:** In the "First Person Shooter" game, suppress gun's recoil for improving precision shooting



**Step 1:** Tick the box of the "Perform delay each time a key is pressed" and "Perform delay each time a key is released" at "Macro Manager Menu">> Select "mSec" of time unit in the "Time unit".


**Step 2:** Input "64" of time value in "Time" box. >>Click "Left" on "Mouse Simulation Area".

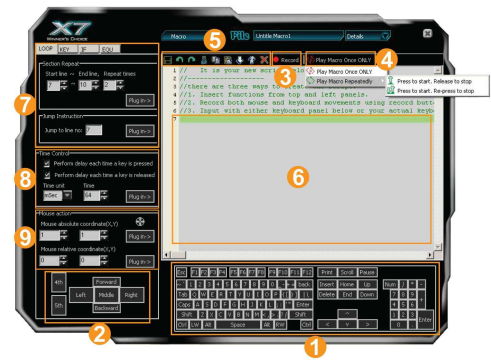
**Step 3:** Input "70" of time value in "Time" box. >>Click "Left" on "Mouse Simulation Area".

**Step 4:** Input "85" of time value in "Time" box. >>Click "Left" on "Mouse Simulation Area".

**Step 5:** Input "95" of time value in "Time" box. >>Click "Left" on "Mouse Simulation Area".

**Step 6:** Now your editing area will look like this as figure 2 shows.

**Step 7:** Click the  icon to save the settings



**Macro Manager Menu**

```

1 Press left button
2 Delay 64 Millisecond
3 Release left button
4 Delay 64 Millisecond
5 Press left button
6 Delay 70 Millisecond
7 Release left button
8 Delay 70 Millisecond
9 Press left button
10 Delay 85 Millisecond
11 Release left button
12 Delay 85 Millisecond
13 Press left button
14 Delay 95 Millisecond
15 Release left button
16 Delay 95 Millisecond
17

```

**Fig. 2**

**Let's check it in "First Person Shooter" game practically:**

In the real FPS shooting games, the gun's recoil is designed in coincide with each bullet while it is shooting. For the consecutive shootings, the gun's recoil will accumulated till it is out of control, and the impact point will be out of expected range. In this instance, we increase time interval between each shooting and reduce the gun's recoil, hence, it effectively increase the shooting precision. As result, the gun's recoil is suppressed and the point of impact is highly concentrated. If you reduce the time interval between each shooting, it may accelerate the shooting speed and you may have better chance to hit your opponents.

**Benefits:** This example shows how to suppress gun's recoil and increase shooting precision that users can decide how fast and how many bullets will be shot according to each rifle or gun on the FPS games, the time interval of "64 ms" is the shortest testing value for the most of FPS games that can work in good order. As results, it offers better surviving opportunities over your opponents!

**Example 3: In "First Person Shooter" game, 1 click to suppress gun's recoil by changing cursor relative displacement.**

**Step 1:** Click on "Play Macro Once Only" at the "Macro Manager Menu"

>>Select "Play Macro Repeatedly">>Select "Press to start, Release to stop".

**Step 2:** Tick the box of "Perform delay each time a key is released" >>Select "mSec" of time unit in the "Time unit". >> Input "110" of time value in "Time" box.

**Step 3:** Click "Left " on "Mouse Simulation Area".

**Step 4:** Input "3" of coordinate value in "Mouse Relative Coordinate Y Axis " box. >>Click "Plug In"

**Step 5:** Repeating Step 4

**Step 6:** Input "8" of coordinate value in "Mouse Relative Coordinate Y Axis" box. >>Click "Plug In".

**Step 7:** Repeating 7 times from step 6 to step 7.

**Step 8:** Now your editing area will look like this as figure 3 shows.

**Step 9:** Click the  icon to save the setting

```
1 Press_left_button
2 Release_left_button
3 Delay 110 Millisecond
4 mouse_relative_move 0 3
5 Press_left_button
6 Release_left_button
7 Delay 110 Millisecond
8 mouse_relative_move 0 8
9 Press_left_button
10 Release_left_button
11 Delay 110 Millisecond
12 mouse_relative_move 0 8
13 Press_left_button
14 Release_left_button
15 Delay 110 Millisecond
16 mouse_relative_move 0 8
17 Press_left_button
18 Release_left_button
19 Delay 110 Millisecond
20 mouse_relative_move 0 8
21 Press_left_button
22 Release_left_button
23 Delay 110 Millisecond
24 mouse_relative_move 0 8
25 Press_left_button
26 Release_left_button
27 Delay 110 Millisecond
28 mouse_relative_move 0 8
29 Press_left_button
30 Release_left_button
31 Delay 110 Millisecond
32 mouse_relative_move 0 8
33 Press_left_button
34 Release_left_button
35 Delay 110 Millisecond
36 mouse_relative_move 0 8
37 Press_left_button
38 Release_left_button
39 Delay 110 Millisecond
40
```

Fig.3

**Let's check it in "First Person Shooter" game practically:**

This instance is similar to the example 2, but it offers faster shooting speed while perform the same effect of suppressing the gun's recoil. For those FPS professional gamers, they are capable to perform precise and difficult "manual" actions of suppressing gun's recoil during the consecutive shooting by moving the moue back and forth so as to keep the impact at the same point. Now, by using this instance, you can do the same expertise with one click to the designated mouse button. In the CS practical testing, we found this instance is very useful for the rifle types like "AK47" and "M4A1", but for those less recoil rifles such as MP5, you may reduce the relative displacement value.

**Benefits:** This example shows how to integrate the "Mouse Relative Displacement" and "Recycle Macro" to perform the professional actions during the game play. This example demonstrates how to suppress the gun's recoil by compensating the "Y relative displacement" value to reduce each shooting deviation, and hence increase the shooting precision. The Y relative displacement values are in the reducing order as in the practical game testing, we found the gun's recoil is increased gradually with each bullet is short. And you may decide how many bullets will be shot by performing the "Recycle Macro" option; the consecutive shooting will be ceased while the designated mouse button is released.

**Example 4:** In the "First Person Shooter" game, 1 click to turn around 180 degrees

**Step 1:** Input "799" of coordinate value in "Mouse Relative Coordinate X Axis Box" of the "Macro Manager Menu">>Click "Plug In".

**Step 2:** Select "mSec" of time unit in the "Time unit" >> Input "23" of time value in "Time" box. >>Click "Plug In".

**Step 3:** Repeat three times from step 2 to step 3.

**Step 4:** Input "500" of coordinate value in "Mouse Relative Coordinate X Axis Box".>>Click "Plug In".

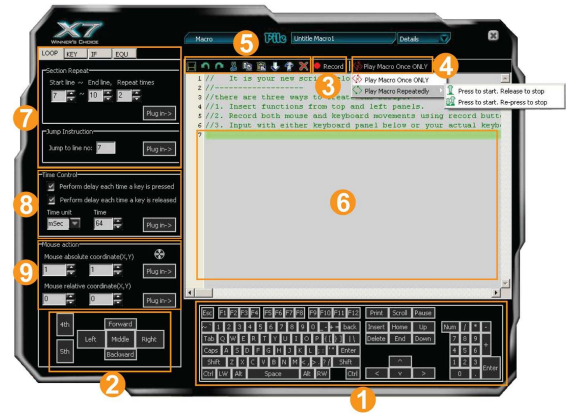
**Step 5:** Click "Plug in" in "Time Control Area" of "Macro Manager Menu".

**Step 6:** Input "50" of coordinate value in "Mouse Relative Coordinate X Axis Box".>>Click "Plug In".

**Step 7:** Click "Plug in" in "Time Control Area" of "Macro Manager Menu"

**Step 8:** Now your editing area will look like this as figure 4 shows.

**Step 9:** Click the  icon to save the setting.



Macro Manager Menu

```

1 mouse_relative_move 799 0
2 Delay 23 Millisecond
3 mouse_relative_move 799 0
4 Delay 23 Millisecond
5 mouse_relative_move 799 0
6 Delay 23 Millisecond
7 mouse_relative_move 799 0
8 Delay 23 Millisecond
9 mouse_relative_move 500 0
10 Delay 23 Millisecond
11 mouse_relative_move 50 0
12 Delay 23 Millisecond
13

```

Fig.4

**Let's check it in "First Person Shooter" game practically:**

In the real FPS shooting games, in the circumstances that your opponents unexpected turn to, or show up on your back, it will be almost impossible to instantly turn around and give them a shot. Or it requires a very high performance mouse to perform "turn around" actions, but usually it is not fast enough to accomplish the "turn around" action before your opponent starts to fire. This example demonstrates how powerful it is that it performs automatically the continuous "turn around" actions in the sudden, while your opponents are not ready to give you the fatal hits!

**Benefits:** This example shows how to perform the "turn around" action by just one click to the designated button, and sustain your aiming point at the same level. The given "799" relative displacement value is due to, after in practical testing, the games only response to the value less than the maximum horizontal display resolution. For instance, this example is only applicable to the display resolution of 800x600 mode of your LCD display or monitor, "Overflow" error may occur in case the value is out of your display boundary. Meanwhile, the time interval is inserted between each action and the same action is repeated by 6 times, this is due to after practical testing, we found the FPS games will not properly response for the time interval shorter than 20 ms.

## Notice

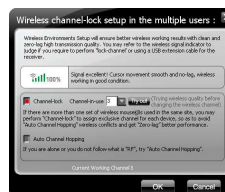
To ensure that your mouse sends and receives perfectly, please read below instructions for your reference:

### 1. Avoid Channel Confliction from Auto Channel Hopping

1). Left-click on the icon "1" at your system tray and select "RF Channel Setting".

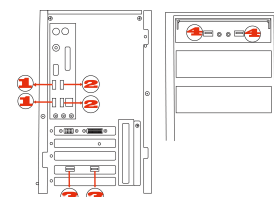


2). Select "Channel-lock" to define a private channel to secure better wireless communication quality.



### 2. Avoid Interference from iron panel of PC.

Please plug the Multi-link receiver into 4 to avoid wireless signal shielding instead of placing at 1, 2 or 3.



USB Ports

3. Use USB extension cable to position the Multi-link receiver at a far location to prevent electromagnetism interference from devices.

4. Avoid using the wireless mouse on a metal surface. Metals such as iron, aluminum, or copper shield the radio frequency transmission and slow down the mouse's response time or cause the mouse to fail temporarily.

5. The radio frequency is 2.4GHz, it is safe for our bodies, but please be cautious in using cardiac pacemaker or other body auxiliary instruments.

## Troubleshooting

If the mouse is not working:

1. Make sure the mouse power is on.
2. Check battery and battery installation.
3. Check receiver installation.
4. Try another USB port.

## **Product Support**

Need help with technical support? Please go to: <http://www.a4tech.com/ennew/support.asp> and our support team will respond within 72 hours.

\*\*All pictures and description mentioned above is for reference only and is subject to change without notice.