

A picture guide of forest trees in Cambodia I

~ Kampong Chhnang ~

រូបភាពរំលែកសំបុត្រា អំពីឈើព្រៃនៅកម្ពុជា



Center for Asian Conservation Ecology, Kyushu University,
6-10-1 Hakozaki, Fukuoka. 812-8581, Japan.

June 25, 2012

A picture guide of forest trees in Cambodia I

~ Kampong Chhnang ~

រូបភាពណែនាំបង្ហាញ អំពីឈើព្រៃនៅកម្ពុជា

Hironori Toyama¹, Shuichiro Tagane¹, Tsuyoshi Kajisa¹,
Phourin Chhang², Ryuji Ichihashi¹ and Tetsukazu Yahara¹

1: Center for Asian Conservation Ecology, Kyushu
University, 6-10-1 Hakozaki, Fukuoka 812-8581, Japan. 2:
Institute of Forest and Wildlife Research and
Development, Forestry Administration, Ministry of
Agriculture Forestry and Fisheries, 40 Preah Norodom
Blvd, Phnom Penh, Cambodia.

Funded by

A JSPS grant for Global Center of Excellence Program
“Asian Conservation Ecology as a basis of human-nature
mutualism” and also by the Environment Research and
Technology Development Fund (S9) of the Ministry of the
Environment, Japan.



Title: A picture guide of forest trees in Cambodia I ~ Kampong Chhnang ~

Authors: Hironori Toyama, Shuichiro Tagane, Tsuyoshi Kajisa, Phourin Chhang,
Ryuji Ichihashi and Tetsukazu Yahara

Photographs: Hironori Toyama and Shuichiro Tagane

First published: 25 June 2012

Last updated: 9 February 2017 (2nd ver.)

Place published: Fukuoka, Japan

Publisher: Center for Asian Conservation Ecology, Kyushu University



Acknowledgements

We thank staffs of Forestry Administration for their support of field works in PSPs, local people for their help collecting specimens and identifying local names, and N. Raes (Nationaal Herbarium Nederland), T. Utteridge (Royal Botanic Gardens, Kew), S. Lee (Singapore Botanic Gardens) and H. Suvanmoly (Muséum national d'Histoire naturelle, Paris) for their help of herbarium work. This publication was supported by a JSPS grant for Global Center of Excellence Program “Asian Conservation Ecology as a basis of human-nature mutualism” and also by the Environment Research and Technology Development Fund (S9) of the Ministry of the Environment, Japan.

Preface

Cambodia is one of the countries that have the highest biodiversity in South-East Asia. According to Sodhi et al. (2004), 65.5 % (data from World Conservation Monitoring Centre) of Cambodian land is covered by the natural forest excluding 'disturbed natural forest', 'exotic plantation' and 'native species plantation'. However, among Indo-Chinese countries, the flora of Cambodia remains most poorly studied due to the long-lasting civil war. After the French colonization of 1863, the flora of French Indochina including Cambodia was surveyed by French botanists and a series of *Flore Generale de l'Indo-Chine* were published between 1902 and 1950. However, during and after the World War II, botanical surveys in Cambodia were disrupted until the civil war was terminated in 1992. Recently, there has been a growing body of forest studies in Cambodia, aiming at developing sustainable forestry and forest conservation. These include studies on wood fuel consumption rates (Top et al. 2004a; Top et al. 2004c; Top et al. 2006), forest biomass increment (Top et al. 2004b), and forest structure and composition (Kimpbat et al. 2002; Kao and Iida 2006; Hiramatsu et al. 2007; Tani et al. 2007; Top et al. 2009; Theilade et al. 2011). However, forest flora of Cambodia remained poorly documented, making it difficult to carry out studies on forest composition based on species identification. In previous studies of Cambodian forest plots, local people have been asked to identify species and then a local name has been translated to a scientific name using some lists in which local names and scientific names are corresponded to each other. This one-to-one translation method often resulted in serious misidentifications of species. For example, *Popel*, an important timber species, is identified as *Shorea cochinchinensis* by DANIDA (2004), *Shorea roxburghii* by Kao and Iida (2006), and *Hopea recopei* by Top et al. (2009). To overcome this difficulty, we are editing a forest flora of Cambodia by studying and reviewing the taxonomy of woody species (Toyama et al. submitted). This is the first picture guide, providing photos and specimen images of tree species which were collected in our field surveys in Kampong Chhnang Province.

Hironori Toyama

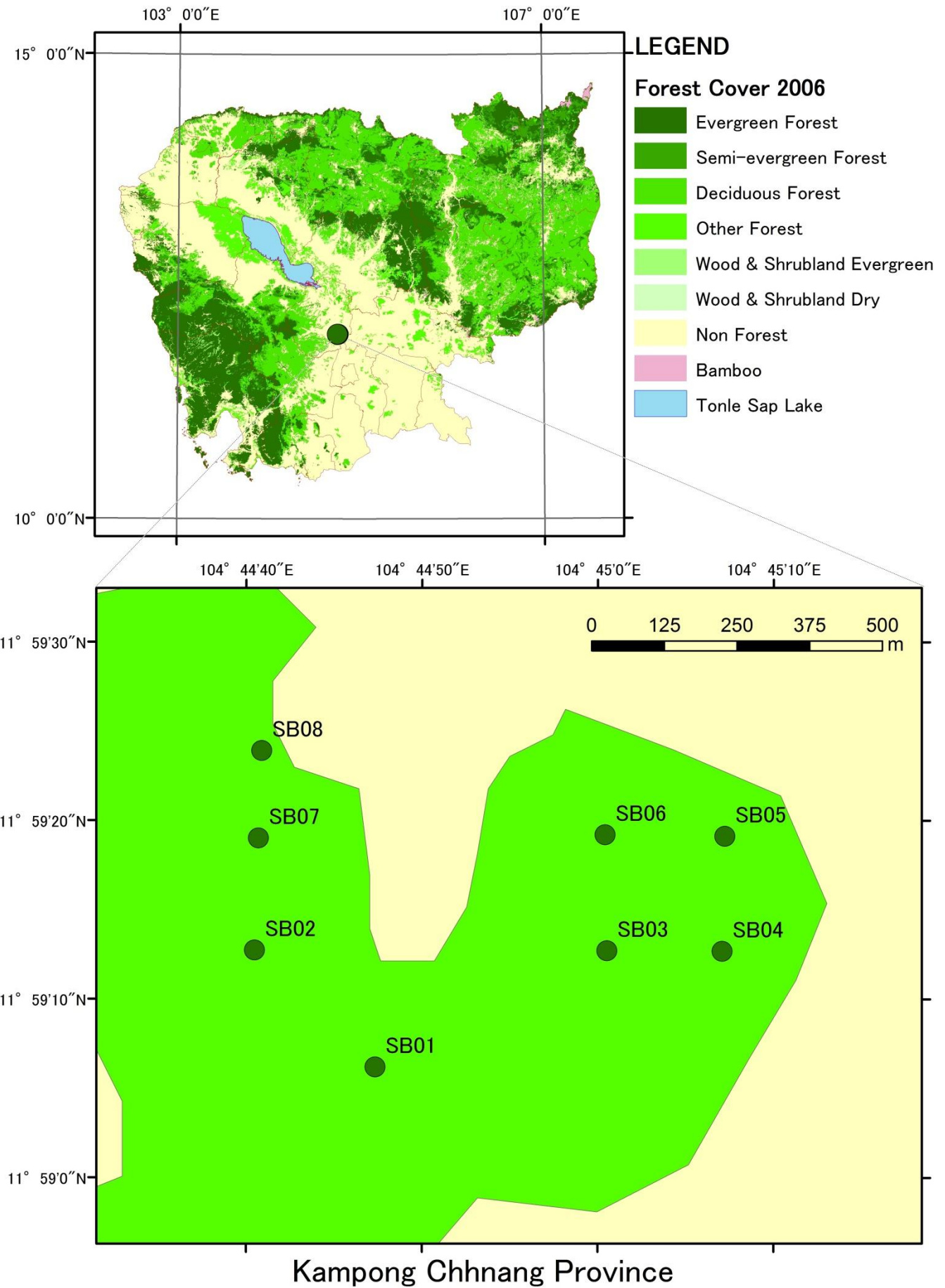
Reference

- DANIDA. 2004. List of Tree Species. Cambodia Tree Seed Project.
- Hiramatsu R, Kanzaki M, Toriyama J, Kaneko T, Okuda Y, Ohta S, Khorn S, Pith P, Lim S, Pol S, Ito E, Araki M. 2007. Open woodland patches in an evergreen forest of Kampong Thom, Cambodia: Correlation of structure and composition with microtopography, Springer, New York.
- Kao D, Iida S. 2006. Structural characteristics of logged evergreen forests in Preah Vihear, Cambodia, 3 years after logging. *For. Ecol. Manage.* 225:62-73.
- Kimpbat N, S. K, Ouk S, Uozumi Y, Ueki T. 2002. Management of mixed forest in Cambodia - A case study in Sandan district, Kampong Thom. *Bulletin of Faculty of Agriculture, Shinshu University.* 38:45-54.
- Sodhi NS, Koh LP, Brook BW, Ng PKL. 2004. Southeast Asian biodiversity: an impending disaster. 19:654-660.
- Tani A, Ito E, Kanzaki M, Ohta S, Khorn S, Pith P, Tith B, Pol S, Lim S. 2007. Principal forest types of three regions of Cambodia: Kampong Thom, Kratie, and Mondolkiri, Springer, New York.
- Theilade I, Schmidt L, Chhang P, McDonald JA. 2011. Evergreen swamp forest in Cambodia: floristic composition, ecological characteristics, and conservation status. *Nord. J. Bot.* 29:71-80.
- Toyama H, Tagane S, Chhang P, Samreth V, Ma V, Sokh H, Kajisa T, Katayama A, Itadani H, Tateishi M, Tachiki Y, Sakata K, Ichihashi R, Onoda Y, Mizoue N, Tachida H and Yahara T. submitted. Inventory of Woody Flora Taxonomy of trees in permanent plots of Kampong Thom and Kampong Chhnang Provinces, Cambodia, *Acta Phytotaxonomica et Geobotanica*.
- Top N, Mizoue N, Ito S, Kai S. 2004a. Spatial analysis of woodfuel supply and demand in Kampong Thom Province, Cambodia. *For. Ecol. Manage.* 194:369-378.
- Top N, Mizoue N, Ito S, Kai S, Nakao T, Ty S. 2006. Re-assessment of woodfuel supply and demand relationships in Kampong Thom Province, Cambodia. *Biomass Bioenerg.* 30:134-143.
- Top N, Mizoue N, Ito S, Kai S, Nakao T, Ty S. 2009. Effects of population density on forest structure and species richness and diversity of trees in Kampong Thom Province, Cambodia. *Biodivers. Conserv.* 18:717-738.
- Top N, Mizoue N, Kai S. 2004b. Estimating forest biomass increment based on permanent sample plots in relation to woodfuel consumption: a case study in Kampong Thom Province, Cambodia. *J. For. Res.* 9:117-123.
- Top N, Mizoue N, Kai S, Nakao T. 2004c. Variation in woodfuel consumption patterns in response to forest availability in Kampong Thom Province, Cambodia. *Biomass Bioenerg.* 27:57-68.

Contents

Acknowledgements	2	Rhamnaceae	80
Preface	3	Rhizophoraceae	81
Map	5	Rubiaceae	82
Anacardiaceae	6	Rutaceae	90
Annonaceae	11	Salicaceae	93
Apocynaceae	18	Santalaceae	94
Burseraceae	20	Sapindaceae	95
Chrysobalanaceae	22	Simaroubaceae	98
Clusiaceae	23	Smilacaceae	100
Combretaceae	27	Field photos	101
Connaraceae	30	Index to scientific name	104
Dilleniaceae	31	Index to Kmer name	106
Dipterocarpaceae	33		
Ebenaceae	38	Families are arranged following in	
Euphorbiaceae	42	alphabet order of the LAPG III system.	
Fabaceae	44		
Irvingiaceae	53		
Lamiaceae	54		
Lauraceae	56		
Lecythidaceae	58		
Loganiaceae	59		
Loranthaceae	60		
Lythraceae	61		
Malvaceae	63		
Moraceae	64		
Melastomataceae	67		
Meliaceae	69		
Myristicaceae	70		
Myrtaceae	71		
Ochnaceae	73		
Olacaceae	74		
Opiliaceae	75		
Phyllantaceae	76		

Map



Anacardiaceae *Buchanania reticulata* Hance

Kmer name: ដើមលាំងជ័យស្លឹកធំ [Laingchey Sleuk Thom], ដើមម្រុក្សណ៍បារាំង [Morak Baraing]



Distribution: Cambodia, Laos, Thailand, Vietnam.

Observation: **Tree** grown up to 10m tall; occasionally found in deciduous plots of Kampong Chhnang.

Specimen No. 144, 167, 189

Anacardiaceae *Buchanania siamensis* Miq.

Kmer name: ដើមលាំងជ័យ [Laingchey]



Distribution: Cambodia, Laos, Thailand, Vietnam

Observation: **Small tree** rare in deciduous stands of Kampong Chhnang. This species is distinguished from *B. reticulata* in smaller leaves with very short petioles, not gathered in terminal nodes.

Specimen No. 554

Anacardiaceae *Gluta laccifera* (Pierre) Ding Hou A

Kmer name: ជើមត្រីល [Kreul], ម្រំក្បួន [Morak]



Distribution: Cambodia, Laos, Thailand, Vietnam.

Observation: **Tree** commonly found in deciduous (dry dipterocarp) plots.

Specimen No. 146, 193, 201

Anacardiaceae *Mangifera duperreana* Pierre

Kmer name: ដើមស្វាយព្រៃ [Svay Prey]



Distribution: Cambodia, Thailand, Vietnam.

Observation: **Tall tree** up to 25 m occasionally found in deciduous plots of Kampong Chhnang.

Specimen No. 209

Anacardiaceae *Semecarpus cochinchinensis* Engl.

Kmer name: ដើមស្វាយគគីត [Svay Kokit]



Distribution: Cambodia, Laos, Malaysia, Thailand, Vietnam.

Observation: This tree was collected only in an deciduous stand near SB01 of Kampong Chhnang.

Specimen No. 551, 1118

Annonaceae *Artabotrys harmandii* Finet & Gagnep.

Kmer name: វល្លិក្រូដាក់ [Vor Trodak], វល្លិដោះក្របី [Vor Doas Krobey]



Distribution: Cambodia, Laos, Thailand, Vietnam.

Observation: **Woody vine** occasionally found in deciduous stands.

Specimen No. 145

Annonaceae *Dasymaschalon lomentaceum* Finet & Gagnep.

Kmer name: ជើមជើងចាប [Cheung Chap]



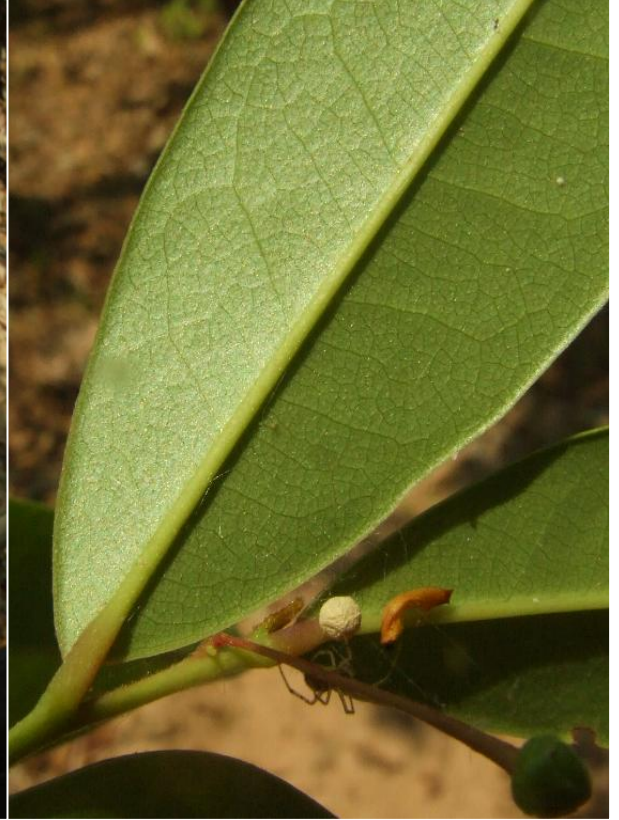
Distribution: Cambodia, Laos, Thailand, Vietnam.

Observation: **Small shrub** occasionally found in deciduous stands.

Specimen No. 548

Annonaceae *Polyalthia evecta* Finet & Gagnep.

Kmer name: ក្តាំងបាយ [Kdaing Bay], បាតផ្តិត [Bat Phtel]



Distribution: Cambodia, Laos, Thailand, Vietnam.

Observation: **Small shrub** less than 50cm. We found this species in open deciduous stands.

Specimen No. 154, 1100

Annonaceae *Polyalthia luensis* Finet & Gagnep.

Kmer name: ក្តាំងបាយ [Kdaing Bay]



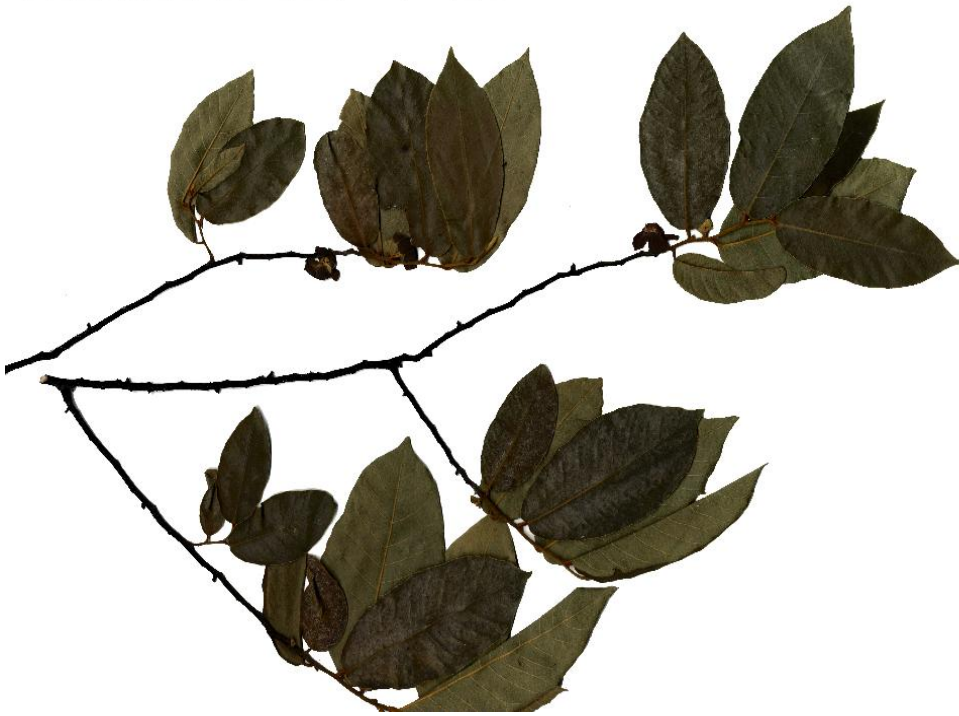
Distribution: Cambodia (new record), Laos, Vietnam.

Observation: **Shrub** 1-1.5m tall, sporadically found in secondary forest.

Specimen No. 1101

Annonaceae *Uvaria rufa* Blume

Kmer name: វល្លិព្រៃទៀលធំ [Vor Trial Thom]



Distribution: Cambodia, China, India, Indonesia, Laos, Malaysia, Thailand, Vietnam.
Observation: **Vine** found in open deciduous stands of Kampong Chhnang. This species is characterized by dark red petal and stellate tomentose leaves.

Specimen No. 147, 1096, 1104, 1124

Annonaceae *Uvaria siamensis* (Scheff.) L.L.Zhou, Y.C.F.Su et R.M.K.Saunders

Kmer name: វល្លិក្រវ៉ាន់ [Vor Krovan]



Distribution: Cambodia, Laos, Thailand.

Observation: **Woody vine** found In open place of Kampong Chhnang.

Specimen No. 549, 1095

Annonaceae *Xylopia pierrei* Hance

Kmer name: ដើមក្រាយស [Kray Sor]



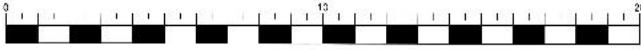
Distribution: Cambodia, Thailand, Vietnam.

Observation: **Tall tree** occasionally found in deciduous plots. The specimen 112 differs in 1 bases of the *rbcL* locus from 76 collected in Kampong Thom, and thus *X. pierrei* could include two cryptic species.

Specimen No. 112, 203, 214, 537

Apocynaceae *Amphineurion marginatum* (Roxb.) D.J.Middleton

Kmer name: វល្លិក្រឡាដំរី [Vor Krolampe], វល្លិប្រឡាដំរី [Voa Prolaoampe]



Distribution: Bangladesh, Cambodia, China, India, Indonesia, Laos, Malaysia, Myanmar, Nepal, Philippines, Vietnam.

Observation: **Woody vine** occasionally found along the margin of evergreen stands.

Specimen No. 171, 1098

Apocynaceae *Strophanthus caudatus* Kurz

Kmer name: វល្លិមេជ័រ [Vor Mechor], ស្ត្រង់តោ [Sneng Ko]



Distribution: Cambodia, China, India, Indonesia, Laos, Malaysia, Myanmar, Philippines, Singapore, Thailand, Vietnam.

Observation: **Woody vine** occasionally found in deciduous stands.

Specimen No. 114, 1103, 1125

Burseraceae *Canarium parvum* Leenh.

Kmer name: ដើមតាឡាត់ [Ta Latt]



Distribution: Cambodia (new record), China, Laos, Vietnam.

Observation: **Small tree.** We collected this species in an deciduous plot of Kampong Chhnang (SB02).

Specimen No. 221

Burseraceae *Canarium subulatum* Guill.

Kmer name: ដើមតាឡាត់ [Ta Latt]



Distribution: Cambodia, China, Laos, Thailand, Vietnam.

Observation: **Small tree.** We collected this species in an deciduous plot of Kampong Chhnang (SB02).

Specimen No. 185

Chrysobalanaceae *Parinari anamensis* Hance

Kmer name: ជើមឆ្លុក [Thlork]



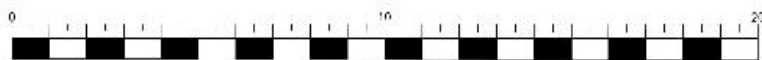
Distribution: Cambodia, Laos, Thailand, Vietnam.

Observation: **Tall tree** growing up to 20-30m, widely found in Kampong Thom and also in deciduous plots of Kampong Chhnang.

Specimen No. 140, 211, 1091

Clusiaceae *Calophyllum calaba* L.var. *bracteatum* (Wight) P.F.Stevens

Kmer name: ជើមផ្លុង [Phaong]



Distribution: Cambodia, Laos, Malaysia, Myanmar, Vietnam.

Observation: **Tree** 10-20m tall, common in deciduous plots.

Specimen No. 169

Clusiaceae *Cratoxylum formosum* (Jack) Benth. & Hook. ex Dyer

Kmer name: ជើមល្ងៀង [Longieng]



Distribution: Cambodia, China, Indonesia, Laos, Malaysia, Myanmar, Philippines, Thailand, Vietnam.

Observation: **Deciduous tree** 8-15m tall, occasionally found in deciduous stands.

Specimen No. 117, 536

Clusiaceae *Garcinia cochinchinensis* (Lour.) Choisy

Kmer name: ជើត្រយ៉ា ក [Troyak]



Distribution: Cambodia, Laos, Vietnam.

Observation: **Small tree** 5-8m tall.

Specimen No. 141

Clusiaceae *Garcinia harmandii* Pierre

Kmer name: ក្រាមរមាស [Kramromeas] ដើមដងចប់ [Dorng Chorb]



Distribution: Cambodia, Laos, Vietnam.

Observation: **Shrub** found only in secondary sands of Kampong Chnnang. This species forms dense thickets in dry dipterocarpus forests.

Specimen No. 160, 552

Combretaceae *Terminalia alata* Roth

Kmer name: ដើមឈ្លឹក [Chhlik]



Distribution: Cambodia, India, Laos, Myanmar, Nepal, Thailand, Vietnam.

Observation: **Tall tree** rare in deciduous stands of Kampong Chhnang. Easily distinguishable by densely covered by hairs when young, but mature leaves smooth or slightly hairy below.

Specimen No. 555

Combretaceae *Terminalia calamansanay* Rolf

Kmer name: ដើមពពលខែ [Popeal Khe]



Distribution: Cambodia, Indonesia, Laos, Malaysia, Myanmar, Phillipines, Thailand, Vietnam.

Observation: **Tall tree** rare in deciduous plots of Kampong Chhnang.

Specimen No. 188

Combretaceae *Terminalia chebula* Retz.

Kmer name: ដើមសម័ [Sa Mor]



Distribution: Bangladesh, Bhutan, Cambodia, China, India, Laos, Malaysia (introduced), Myanmar, Nepal, Sri Lanka, Thailand, Vietnam.

Observation: **Tree** rarely occurs in Kampong Chhnang. We found only one sample.

Specimen No. 186

Connaraceae *Connarus cochinchinensis* Pierre

Kmer name: ដើមលំពស់ [Lum Puas]



Distribution: Cambodia, Laos, Malaysia, Thailand, Vietnam.

Observation: **Woody vine** commonly found in open deciduous stands in the vicinity of a community forest plot SB02 of Kampong Chhnang.

Specimen No. 115, 124, 152

Dilleniaceae *Dillenia aurea* Sm.

Kmer name: ដើមភ្នំ [Phlou Thom]



Distribution: Cambodia, India, Laos, Myanmar, Thailand.

Observation: **Tall tree** rarely found in deciduous plots of Kampong Chhnang; We found one tree in Plot SB02.

Specimen No. 184

Dilleniaceae *Tetracera loureiroi* Pierre ex Craib

Kmer name: វៀរដោះគន់ [Vor Doskun]



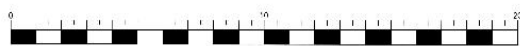
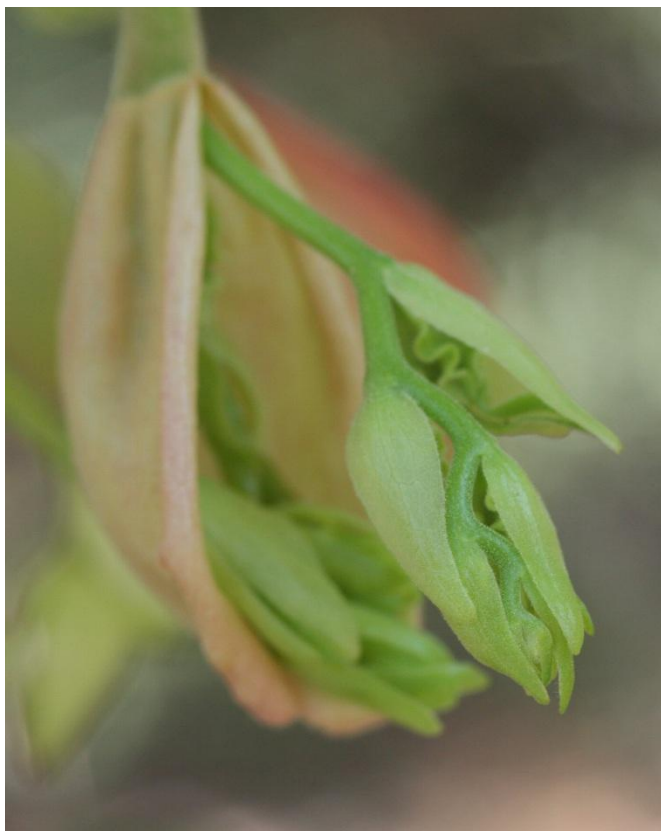
Distribution: Cambodia, China, India, Indonesia, Malaysia, Myanmar, Thailand, Vietnam.

Observation: **Woody vine** climbing up to the canopy.

Specimen No. 138

Dipterocarpaceae *Dipterocarpus intricatus* Dyer

Kmer name: ជើមត្រាច [Trach]



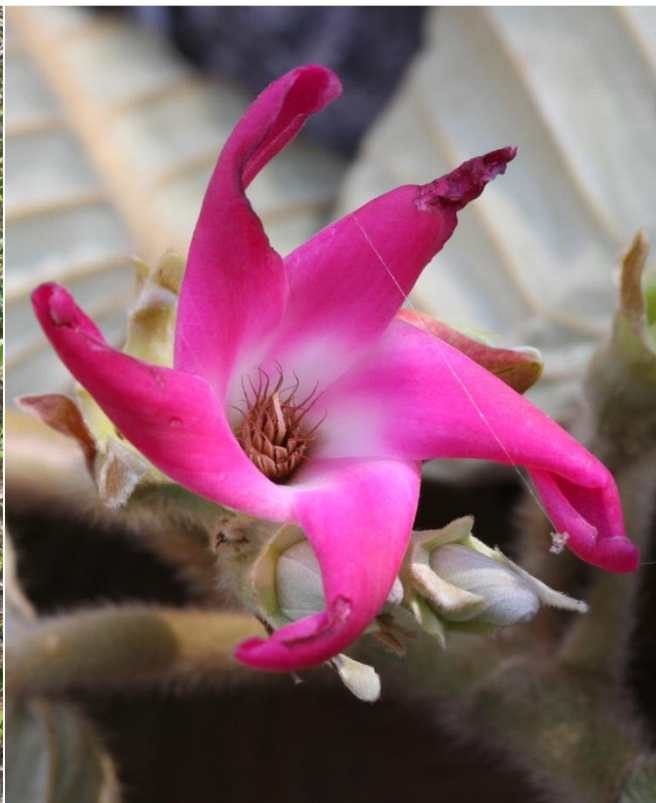
Distribution: Cambodia, Laos, Vietnam.

Observation: **Deciduous tree** 8-12m tall, occasionally found in deciduous plots of Kampong Chhnang.

Specimen No. 172, 192, 197

Dipterocarpaceae *Dipterocarpus obtusifolius* Teijsm. ex Miq.

Kmer name: ដើមត្បែង [Tbeng]



Distribution: Cambodia, Laos, Myanmar, Thailand, Vietnam.

Observation: **Deciduous tree** 8-14m tall and a dominant element of deciduous (dry dipterocarp) forests. Similar to *D. intricatus*, but this species has more hairy leaves with more distinct lateral veins and undulate margins.

Specimen No. 180, 218

Dipterocarpaceae *Shorea obtusa* Wall. ex Blume

Kmer name: ដើមផ្លែក្តី [Phchek]



Distribution: Cambodia, Laos, Myanmar, Thailand, Vietnam.

Observation: **Tree** 10-12m tall, occasionally found in deciduous stands of Kanmpong Chhnang. This species has oblong leaves obtuse at apex and sparsely pubescent below. Young shoots are hairy.

Specimen No. 179, 219, 541

Dipterocarpaceae *Shorea roxburghii* G.Don

Kmer name: ដើមពពេល [Popel]



Distribution: Cambodia, Laos, Malaysia, Myanmar, Thailand, Vietnam.

Observation: **Deciduous tree** 10-12m tall, common in dry dipterocarp plots of Kampong Thom and Kampong Chhnang. This species is similar to *Shorea obtusa*, but leaves and shoots are usually gloubrous.

Specimen No. 198

Dipterocarpaceae *Shorea siamensis* Miq.

Kmer name: ជើមរាំងភ្នំ [Raing Phnom]



Distribution: Cambodia, Laos, Malaysia, Myanmar, Thailand, Vietnam.

Observation: **Deciduous tree** 7-8 m tall, common in dry dipterocarp plots of Kampong Chhnang. This species is characteristic of cordate leaf base.

Specimen No. 126, 220

Ebenaceae *Diospyros castanea* (Craib) Fletcher

Kmer name: ដើមឈើខ្មៅ [Chheu Khmao]



Distribution: Cambodia, Laos, Thailand.

Observation: **Deciduous tree** up to 15m tall, occasionally found in deciduous forests in Kampong Chhnang.

Specimen No. 1121

Ebenaceae *Diospyros ehretioides* Wall. ex G. Don

Kmer name: ជើមមីងម៉ាំង [Ming Maing]



Distribution: Cambodia, China, India, Laos, Myanmar, Thailand, Vietnam.
Observation: **Tree** rarely found in deciduous stands of Kampong Chhnang.
Specimen No. 149

Ebenaceae *Diospyros lobata* Lour.

Kmer name: ដើមឈើខ្មៅ [Chheu Khmao]



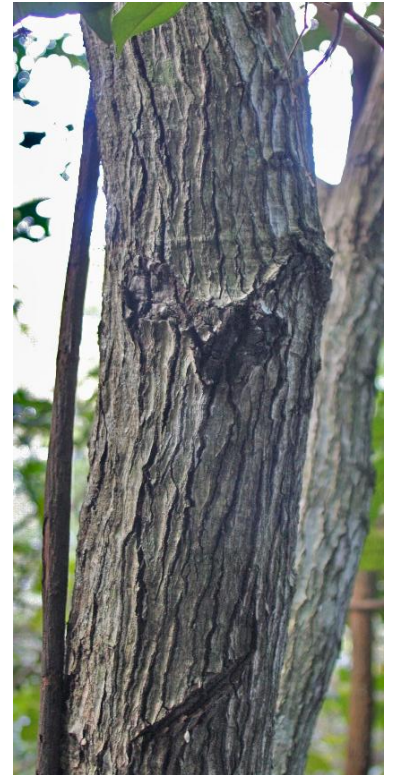
Distribution: Cambodia, Vietnam.

Observation: **Small** or **Tall tree** collected in deciduous stand of Kampong Chhnang.
Cambodian plants have longer leaves than Vietnamese plants.

Specimen No. 1099

Ebenaceae *Diospyros pilosanthera* Blanco

Kmer name: ដើមត្រួយីង [Tro Yoeung]



Distribution: Cambodia, Indonesia, Malaysia, Philippines, Thailand, Vietnam.

Observation: **Evergreen tree** 20-30m tall, widely found in community forest plot of Kampong Chhnang. Characterized by bark black.

Specimen No. 133, 199

Euphorbiaceae *Suregada multiflora* Baill.

Kmer name: ទ្រម៉ុងសេក [Tromoung Sek]



Distribution: India, Bangladesh, Cambodia, Laos, Malaysia, Myanmar, Thailand, Vietnam.
Observation: **Shrub** or **small tree** up to 12m, occasionally found in deciduous plots of
Kampong Chhnang.

Specimen No. 116, 212, 538, 1111, 1122

Euphorbiaceae *Trigonostemon reidioides* (Kurz) Craib

Kmer name: ទឹកដោះ: [Teuk Doas]



Distribution: Cambodia, Laos, Thailand.

Observation: **Small shrub** usually less than 1.5m tall, occasionally found in open deciduous forest. We didn't make specimen of this species in Kampong Chhnang. Specimen [#989] was collected from Kampong Tom.

Specimen No. 989

Fabaceae *Acacia pennata* Willd. subsp. *insuavis* (Lace) I. Nielsen

Kmer name: វៀងអែម [Vor Em]



Distribution: Bhutan, Cambodia, China, India, Laos, Malaysia, Myanmar, Nepal, Sri Lanka, Thailand, Vietnam.

Observation: **Woody vine** often growing up to a **tree**. Common in Kamgpong Chnang. Specimen No. 556

Fabaceae *Dalbergia lanceolaria* subsp. *paniculata* (Roxb.) Thoth.

Kmer name: ជើមស្នួល [Snuol]



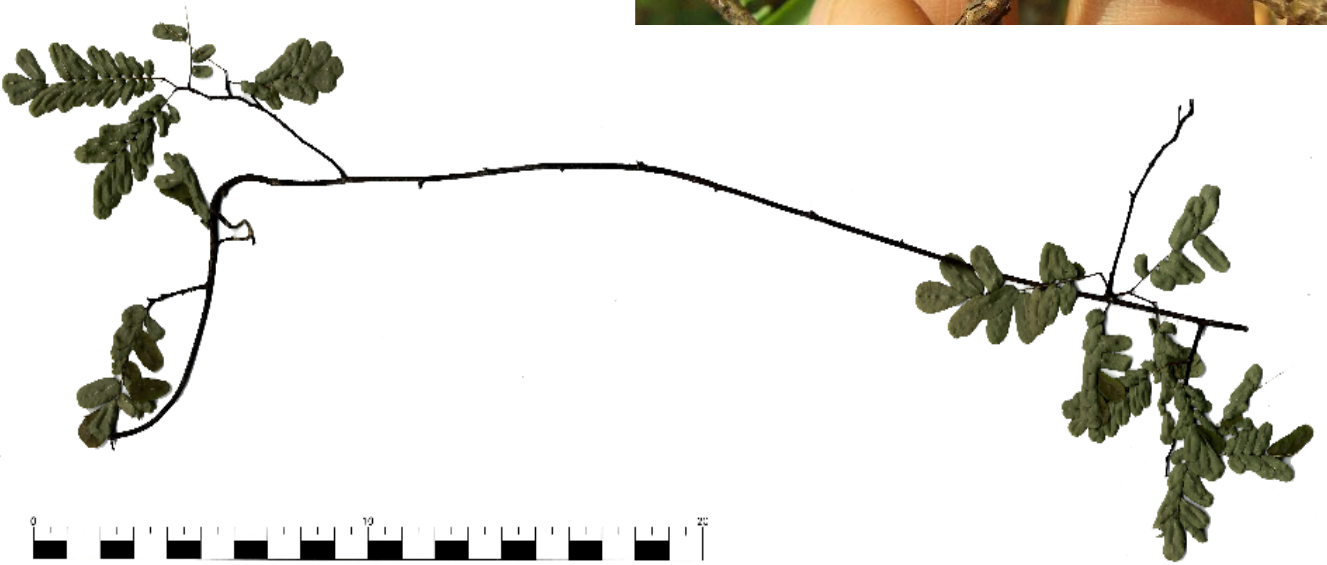
Distribution: Cambodia, India, Laos, Myanmar, Nepal, Thailand, Vietnam.

Observation: **Tree** occasionally found in a deciduous plot SB02. Niyomdham et al. (1997) distinguished three varieties. We need to collect fruiting specimens to identify the plants of Kampong Thom in the variety level.

Specimen No. 164, 205

Fabaceae *Dalbergia thorelii* Gagnep.

Kmer name: អង្ក្រមអង្ក្រម [Angkrem Angkrom]



Distribution: Cambodia, Laos, Thailand.

Observation: **Climbing shrub** found in secondary forest.

Specimen No. 1105

Fabaceae *Dalbergia velutina* Benth.

Kmer name: វល្លិទាស់ [Vor Toas], វល្លិអំពិល [Vor Ampel]



Distribution: Bangladesh, Burma, Cambodia, India, Indonesia, Laos, Malaysia, Myanmar, Thailand, Vietnam.

Observation: **Woody vine** climbing up to 15m found in deciduous plot SB2.

Specimen No. 166

Fabaceae *Peltophorum dasyrrhachis* (Miq.) Kurz

Kmer name: ដើមត្រសែក [Tro Seik]



Distribution: Cambodia, Indonesia, Laos, Malaysia, Sri Lanka, Thailand, Vietnam.

Observation: **Tall tree** common in community forest plots.

Specimen No. 182, 208

Fabaceae *Pterocarpus macrocarpus* Kurz

Kmer name: ជើមធ្មង់ [Thnong]



Distribution: Cambodia, India, Laos, Myanmar, Thailand, Vietnam.

Observation: **Tall tree** found in secondary forest. This species is similar to *P. indicus*, a widely cultivated species.

Specimen No. 148, 183, 210, 534

Fabaceae *Sindora siamensis* Teijsm. ex Miq.

Kmer name: ដើមកំកោះ: [Kokoh]

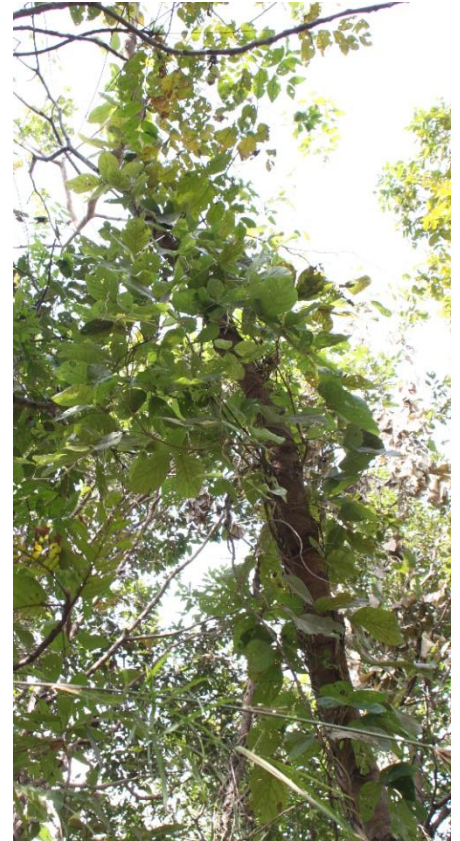


Distribution: Cambodia, Laos, Malaysia, Myanmar, Singapore, Thailand, Vietnam.
Observation: **Tall tree** widely found in deciduous plots. Two variety are distinguished ,
var. *siamensis* has smooth fruits and var. *maritima* (Pierre) K. & S.S.
Karsen has spiny fruits.

Specimen No. 213

Fabaceae *Spatholobus parviflorus* (Roxb.) O. Kuntze

Kmer name: វល្លិវង្ស [Vor Khnhe]



Distribution: Bangladesh, Bhutan, Cambodia, China, India, Indonesia, Laos, Myanmar, Sri Lanka, Thailand, Vietnam.

Observation: **Woody vine** climbing up to canopy. We collected this species in the vicinity of a community forestry plot SB02.

Specimen No. 173

Fabaceae *Xylia xylocarpa* (Roxb.) W. Theob. var. *kerrii* (Craib & Hutch.) I. Nielsen

Kmer name: ដើមស្កុក្រំ [So Krom]



Distribution: Bangladesh, Cambodia, India, Laos, Myanmar, Thailand, Vietnam.

Observation: **Tall tree** occasionally found in Kampong Chhnang. Variety *kerrii* is distinguished from var. *xylocarpa*, distributed in India and Myanmar, by more densely hairy leaflets and anthers lacking glands.

Specimen No. 143, 170, 223

Irvingiaceae *Irvingia malayana* Oliver ex A.Benn.

Kmer name: ដើមចំបក់ [Cham Bok]

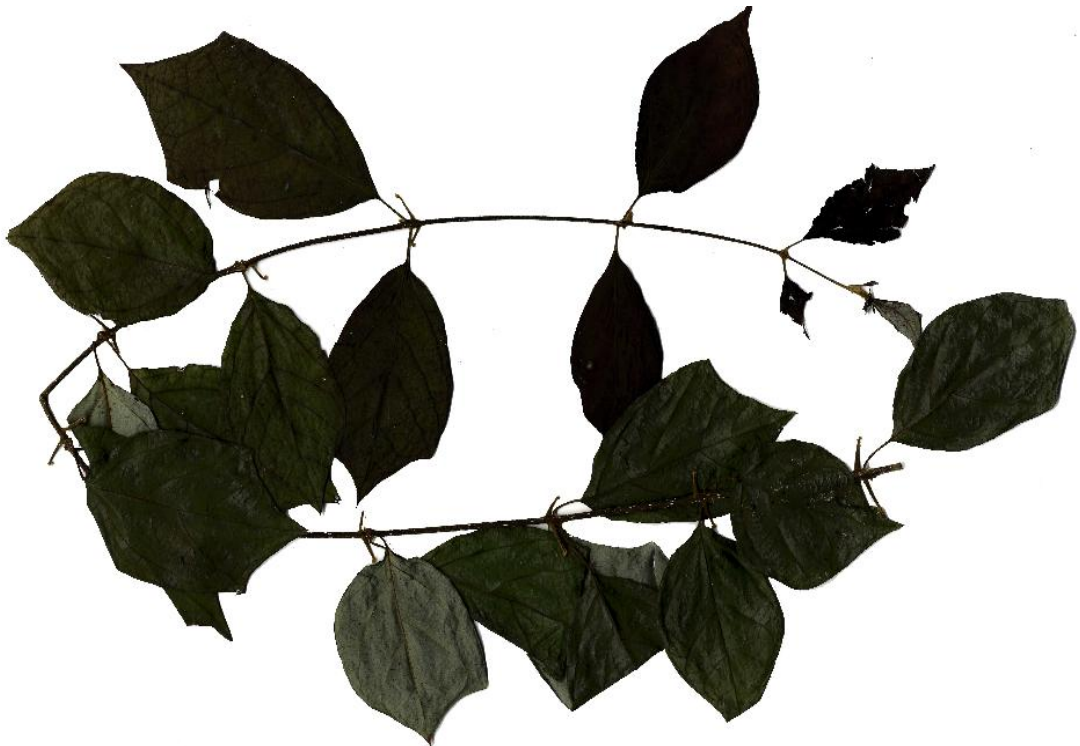


Distribution: Cambodia, India, Indonesia, Laos, Malaysia Myanmar, Thailand, Vietnam.
Observation: **Tall tree** grown up to 30-40m, occasionally found in deciduous plots of Kampong Chhnang.

Specimen No. 156

Lamiaceae *Gmelina asiatica* L.

Kmer name: ដើមអញ្ចាញ [Anhcharnh]



Distribution: Bangladesh, Cambodia, India, Inconesia, Laos, Malaysia, Myanmar, Sri Lanka, Thailand, Vietnam.

Observation: **Scandent vine** rare in dry deciduous stands.

Specimen No. 194

Lamiaceae *Vitex peduncularis* Wall. ex Schauer

Kmer name: ដើមពពួលម្រេច [Popoul Morech] ពពួលអាចម៍សត្វ [Popoul Achsat]



Distribution: Bangladesh, Cambodia, China (Yunnan), India, Laos, Myanmar, Nepal, Thailand, Vietnam.

Observation: **Small tree** 6-9m tall, occasionally found. Leaves glabrous. The specimen is different from the typical form in having sessile leaflets.

Specimen No. 153

Lauraceae *Beilschmiedia obovatifolia* Lecomte

Kmer name: ដើមពានគង់ [Pian Kong], ដើមរំដេញ [Romdenh], សំកុង [Som Kong]



Distribution: Bhutan, Cambodia (new record), China, India, Myanmar, Nepal, Thailand Vietnam.

Observation: This is a tall tree rarely found in deciduous stands; we found one tree each in the vicinity of plot SB01 (tree 540) and SB02 (tree 163).

Specimen No. 163, 540

Lauraceae *Litsea glutinosa* (Lour.) C.B.Rob.

Kmer name: ដើមក្រពុលបាយ [Kropul Bay]



Distribution: Bhutan, Cambodia, China, India, Laos, Myanmar, Nepal, Philippines, Thailand, Vietnam.

Observation: **Tree** occasionally found in deciduous stands.

Specimen No. 128, 543, 1116

Lecythidaceae *Careya arborea* Roxb.

Kmer name: ដើមកណ្តាល [Kandol]



Distribution: Afghanistan, Cambodia, India, Laos, Myanmar, Nepal, Pakistan, Sri Lanka, Thailand, Vietnam.

Observation: **Deciduous tree**, 6-15m tall. This species is occasionally found in community forest plots. Normally leaf shape is ovate.

Specimen No. 142

Loganiaceae *Strychnos nux-vomica* L.

Kmer name: ដើមស្លែង [Sleng]



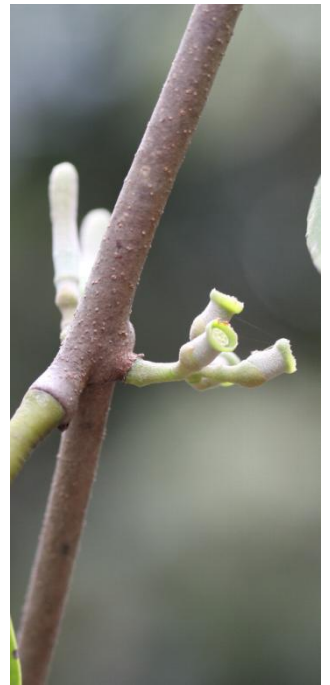
Distribution: Cambodia, China, India, Laos, Malaysia, Sri Lanka, Thailand, Vietnam.

Observation: **Small tree** 4-8m tall occasionally found in deciduous stands of Kampong Chhnang.

Specimen No. 137, 207, 1123

Loranthaceae *Dendrophthoe pentandra* (L.) Miq.

Kmer name: បញ្ជើក្តែក [Banheu Kaek]



Distribution: Cambodia, China, India, Indonesia, Laos, Malaysia, Myanmar, Phillipines, Thailand, Vietnam.

Observation: **Parasitic epiphyte** sporadically found in deciduous stands of Kampong Chhnang.

Specimen No. 119, 1117

Lythraceae *Lagerstroemia floribunda* Jack

Kmer name: ដើមត្របែកព្រៃ [Trobek Prey]



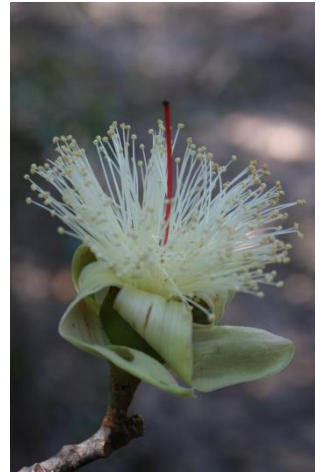
Distribution: Cambodia, Laos, Thailand, Vietnam.

Observation: **Deciduous tree**, occasionally found in deciduous stands.

Specimen No. 191, 539

Malvaceae *Bombax anceps* Pierre

Kmer name: រើមរកា [Rokar]



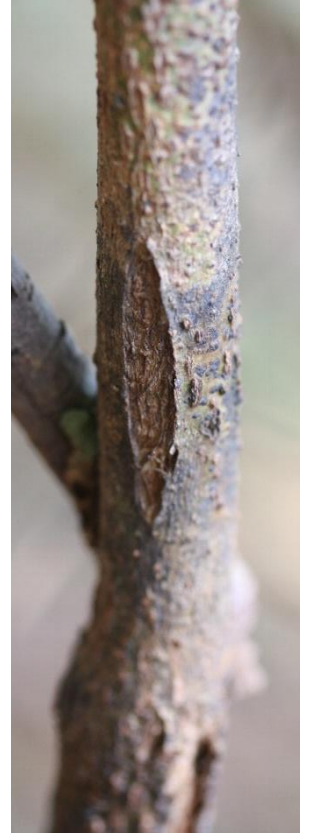
Distribution: Cambodia, Laos, Myanmar, Thailand, Vietnam.

Observation: **Tree** 6-10 m tall, sporadically found in deciduous plots of Kampong Chhnang.

Specimen No. 155, 174, 204

Malvaceae *Microcos tomentosa* Sm.

Kmer name: ដើមពត្តា [Po Phlea]



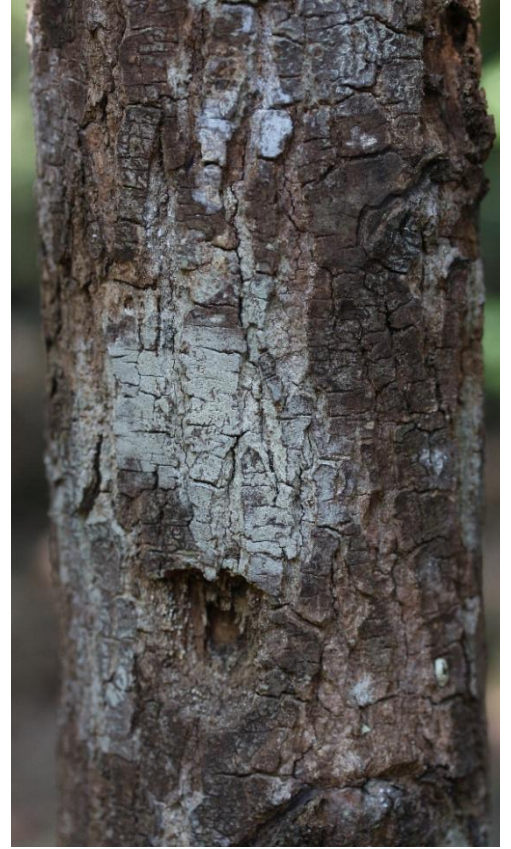
Distribution: Cambodia, Indonesia, Laos, Malaysia, Myanmar, Philippines, Thailand, Vietnam.

Observation: **Tall deciduous tree** up to 15-30m. In young trees, leaf apex is often bifurcated.

Specimen No. 136

Moraceae *Artocarpus nitidus* Trécul

Kmer name: ដើមសំព័រ [Sampor]



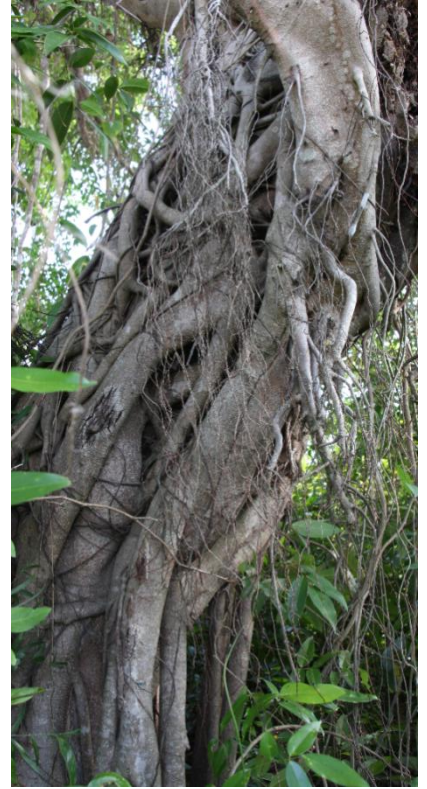
Distribution: Cambodia, China, India, Indonesia, Laos, Malaysia, Myanmar, Papua New Guinea, Philippines, Solomon Islands, Thailand, Vietnam.

Observation: **Tall tree** found in an open deciduous stand in the vicinity of a community forestry plot SB02.

Specimen No. 157

Moraceae *Ficus microcarpa* L.f.

Kmer name: ជ្រៃហ៊ុយ [Chrey bay]



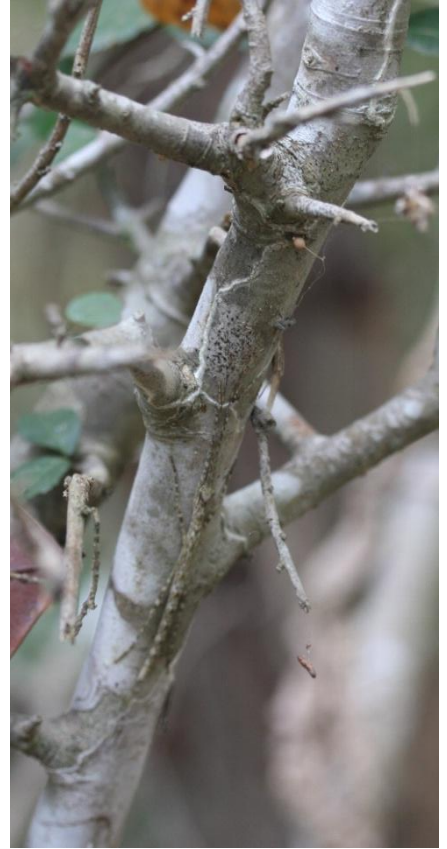
Distribution: Australia, Bangladesh, Bhutan, Burnei, Cambodia, China, Japan, India, Indonesia, Malaysia, Myanmar, Papua New Guniea, Singapore, Sri Lanka, Taiwan, Thailand, Vietnam

Observation: **Tall tree** found in an open deciduous stand in the vicinity of a community forestry plot SB01.

Specimen No. 546

Moraceae *Streblus asper* Lour.

Kmer name: ជើមស្នាយ [Snay]



Distribution: Bangladesh, Bhutan, Cambodia, China, India, Indonesia, Laos, Malaysia, Myanmar, Nepal, Philippines, Sikkim, Sri Lanka, Thailand, Vietnam.

Observation: **Small tree** 6-10m tall, occasionally found in an open deciduous stand in the vicinity of the community forestry plot SB02.

Specimen No. 176

Melastomataceae *Melastoma saigonense* (Kuntze) Merr.

Kmer name: ប៊ុយនេង [Bay Nhenh]



Distribution: Cambodia, Laos, Myanmar, Thailand, Vietnam.

Observation: **Shrub** 1-1.5m tall common in deciduous stands. Easily distinguishable by villous leaves and the stellate hair on the hypanthium.

Specimen No. 150

Melastomataceae *Memecylon scutellatum* (Lour.) Hook. & Arn.

Kmer name: ដើមឃ្នាស [Khmeas]



Distribution: Cambodia, China, Laos, Malaysia, Myanmar, Thailand, Vietnam.

Observation: Shrub common in deciduous forests. This species is similar to *M. edule*, but leaves are thicker, attenuated to both ends, very shortly petiolated, and cymes have fewer (3-6) flowers.

Specimen No. 120, 1088

Meliaceae *Chukrasia tabularis* A. Juss.

Kmer name: ដើមវល្លិយោង [Voryaung]



Distribution: Bhutan, Cambodia, China, India, Indonesia, Laos, Malaysia, Myanmar, Nepal, Sri Lanka, Thailand, Vietnam.

Observation: **Tall tree** occasionally found in deciduous stands. This species is distinct in that leaves are often partly bipinnate.

Specimen No. 175, 222

Myristicaceae *Knema globularia* (Lam.) Warb.

Kmer name: ដើមស្មាត្របី [Sma Krabey], ដើមរំលាយឈាម [Romleay Chhiem]



Distribution: Cambodia, China (Yunnan), Indonesia (Sumatra and W Java), Laos, Malaysia, Myanmar, Singapore, Thailand, Vietnam.

Observation: **Tall tree**; we found one tree in a deciduous stand of Kampong Chhnang. Specimen No. 181

Myrtaceae *Rhodamnia dumetorum* (DC.) Merr. & L.M. Perry

Kmer name: ពូចអូល [Puoch Uol]



Distribution: Cambodia, China, Laos, Malaysia, Thailand, Vietnam.

Observation: **Small tree** not common in Kampong Chhnang. We collected only one specimen in a deciduous plot SB02.

Specimen No. 113

Myrtaceae *Syzygium cumini* (L.) Skeels

Kmer name: ជើមព្រីង [Pring], ព្រីងបាយ [Pring Bay], ព្រីងក្រហម [Pring Krohom]



Distribution: Australia, Bhutan, India, Indonesia, Cambodia, China, Laos, Malaysia, Nepal, Sri Lanka, Thailand, Vietnam.

Observation: **Tall tree** common in deciduous plots of Kapong Chhnang. This species is characteristic of rounded or oblong leaves.

Specimen No. 202, 1090, 1108

Ochnaceae *Ochna integerrima* (Lour.) Merr.

Kmer name: អង្កាសីល [Angkia Sel], អង្កា [Angkia]



Distribution: Cambodia, China, India, Laos, Malaysia, Myanmar, Pakistan, Thailand, Vietnam.

Observation: **Shrub** 2-3 m tall commonly found in deciduous stands.

Specimen No. 122, 544

Olacaceae *Olax wightiana* Wall. ex Wight & Arn.

Kmer name: វល្លិក្រឡិត [Vor Krolet]



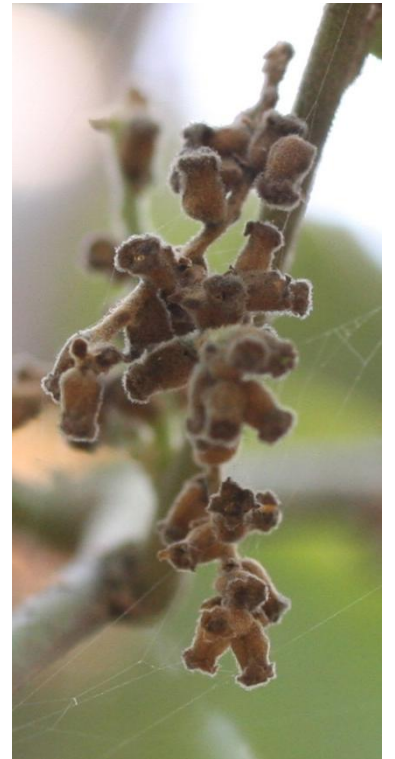
Distribution: Cambodia, China (Hainan), Vietnam.

Observation: This is a scandent woody vine occasionally found in open thickets and margins of the secondary forests in Kampong Chhnang.

Specimen No. 118, 1093, 1113, 1119

Opiliaceae *Cansjera rheedii* J.F. Gmelin

Kmer name: វណ្ណិខ្លាស់ [Vor Khchas]



Distribution: Cambodia, China, India, Indonesia, Laos, Malaysia, Nepal, Philippines, Sri Lanka, Vietnam.

Observation: Scandent **woody vine** rare in open deciduous stands of Kampong Chhnang.
Specimen No. 130, 1089, 1106

Phyllantaceae *Antidesma ghaesembilla* Gaertn.

Kmer name: ដើមជង្គៀបក្តាម [Dangkeap Kdam]



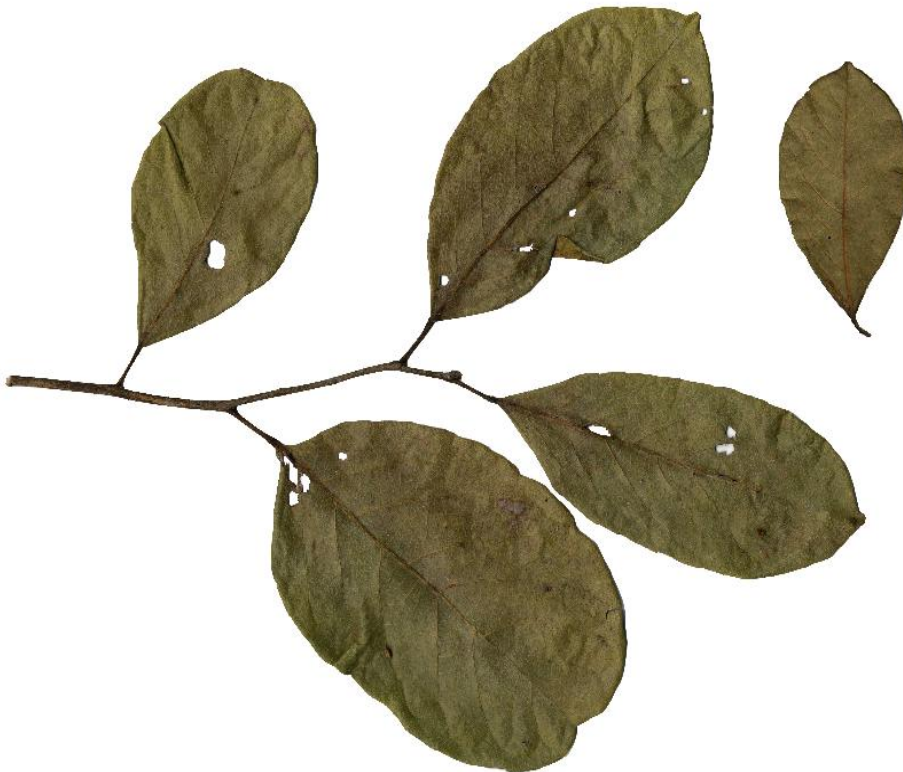
Distribution: Australia, Bangladesh, Cambodia, China, India, Indonesia, Laos, Malaysia, Myanmar, Philippines, Sri Lanka, Thailand, Vietnam.

Observation: **Small tree**, 4-5m tall, rarely found in deciduous stands of Kampong Chhnang.

Specimen No. 158

Phyllantaceae *Aporosa villosa* (Lindl.) Baill.

Kmer name: គ្រុង [Krung]



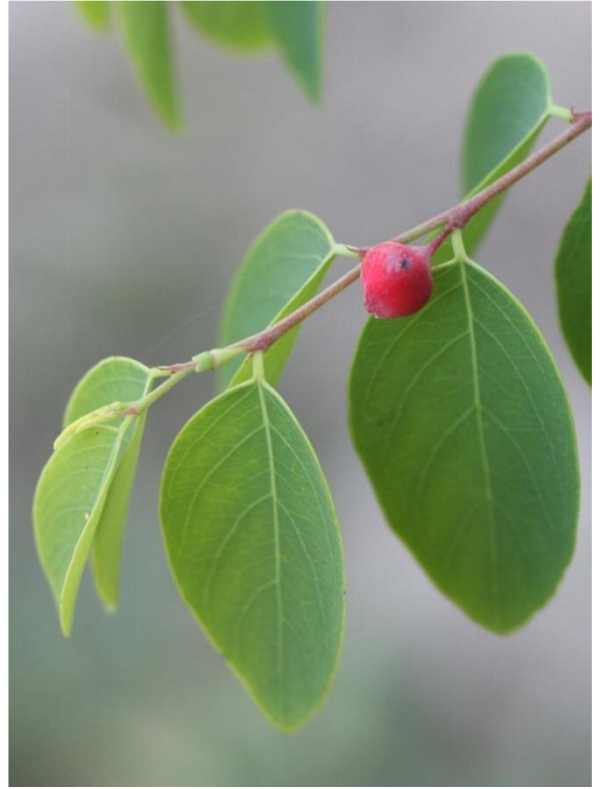
Distribution: Cambodia, China, India, Laos, Myanmar, Thailand, Vietnam.

Observation: **Shrub** usually less than 3m tall. This species is occasionally found in deciduous stands of Kampong Chhnang.

Specimen No. 127

Phyllantaceae *Breynia vitis-idaea* (Burm. f.) C.E.C. Fischer.

Kmer name: ភ្នែកព្រាបធំ [Phnek Preap Thom], ធ្មេញត្រី [Thmenh Trey]



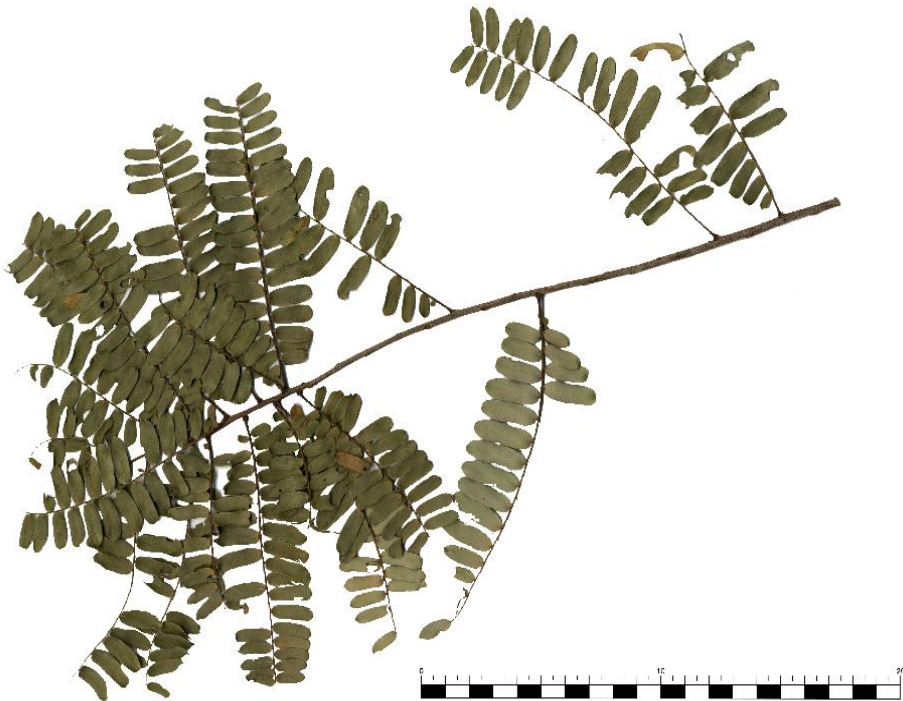
Distribution: Bangladesh, Cambodia, China, India, Indonesia, Laos, Malaysia, Myanmar, Nepal, Pakistan, Philippines, Sri Lanka, Thailand, Vietnam.

Observation: **Small shrub** up to 1.5m tall, occasionally found in deciduous stands of Kampong Chhnang.

Specimen No. 190, 547

Phyllantaceae *Phyllanthus emblica* L.

Kmer name: ដើមកន្ទួតព្រៃ [Kantuot Prey]



Distribution: Bhutan, Cambodia, China, India, Indonesia, Laos, Malaysia, Myanmar, Nepal, Philippines, Sri Lanka, Thailand, Vietnam.

Observation: **Scandent shrub** 2-3m tall, rarely found in the vicinity of a deciduous stand SB02 of Kampong Chhnang.

Specimen No. 139

Rhamnaceae *Ziziphus ccambodianus* Pierre

Kmer name: អង្ករង [Angkrorng]



Distribution: Cambodia, Laos, Vietnam.

Observation: **Small shrub** usually less than 1.7m tall, occasionally found in open deciduous forest. Leaves (4-8 x 2.5-5.5 cm) slightly asymmetrical at the base, curved spines on branches, and big fruits (1.8-2 x 1.8 cm).

Specimen No. 134

Rhizophoraceae *Carallia brachiata* (Lour.) Merr.

Kmer name: ដើមទ្រមែង [Tromeng]



Distribution: Australia, Bhutan, Cambodia, China, India, Indonesia, Laos, Madagascar, Malaysia, Myanmar, Nepal, New Guinea, Pacific islands, Philippines, Sri Lanka, Thailand, Vietnam.

Observation: **Tree** up to 10m found.

Specimen No. 215, 1092

Rubiaceae *Catunaregam tomentosa* (Blume ex DC.) Tirveng.

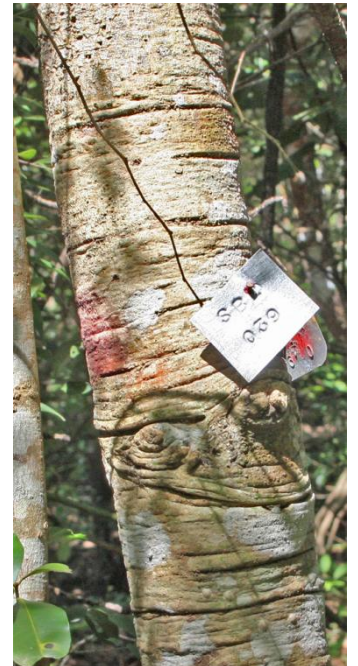
Kmer name: ដើមល្វែង [Lovieng]



Distribution: Cambodia, Laos, Thailand, Vietnam.
Observation: **Small tree** 2-4 m tall occasionally found in dry and open forests.
Specimen No. 151

Rubiaceae *Gardenia coronaria* Buch.-Ham.

Kmer name: ដើមបាក់ដឹង [Bakdorng]



Distribution: Cambodia, India, Myanmar, Thailand, Vietnam.

Observation: **Small tree** 2-4 m tall occasionally found in dry and open forests.

Specimen No. 217, 545

Rubiaceae *Gardenia sootepensis* Hutch.

Kmer name: ដើមបាក់ដង [Bakdorng]



Distribution: Cambodia, China, Laos, Thailand, Vietnam.

Observation: **Small tree** 5-6m tall rarely occur in deciduous stands of Kampong Chhnang. This species is similar to *G. philastreii* and *G. coronaria*, but is distinguished in having tomentose leaves.

Specimen No. 165

Rubiaceae *Ixora javanica* (Blume) DC.

Kmer name: កាំរន្ទ្រ: [Kam Runteah], ធ្មប់ [Thmup]



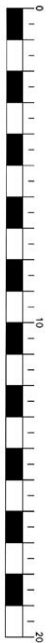
Distribution: Cambodia, Indonesia, Malaysia, Myanmar, Thailand

Observation: **Small shrub** less than 1m tall. This species is occasionally found in open deciduous stands of Kampong Chhnang.

Specimen No. 168

Rubiaceae *Ixora nigricans* R.Br. ex Wight & Arn.

Kmer name: ផ្កាមូលពេជ្រ [Phka Mochul Pich]



Distribution: Cambodia, India, Laos, Malaysia, Thailand, Vietnam.

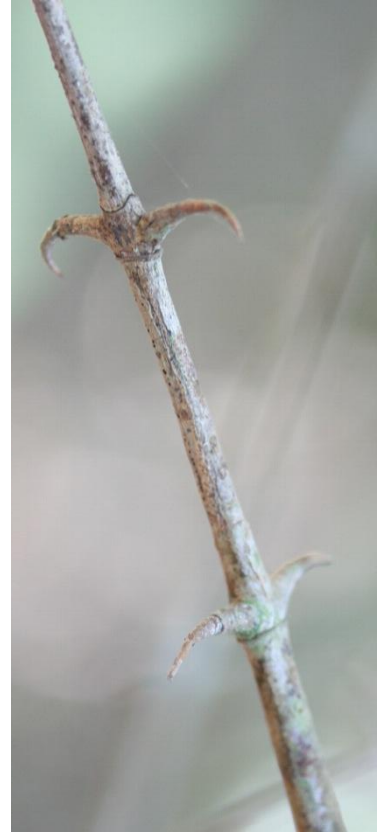
Observation: **Small shrub** collected in an open deciduous stand of Kampong Chhnang.

This species is distinct in white flowers with 1.0-1.3 cm long tubes and 6 mm long, curved petals; flowers are arranged on corymbose panicles.

Specimen No. 1120

Rubiaceae *Oxyceros horridus* Lour.

Kmer name: បន្លាយថ្កា [Banla Yuthka], ធ្មងកញ្ចុះ [Thmung Kanh Chos]



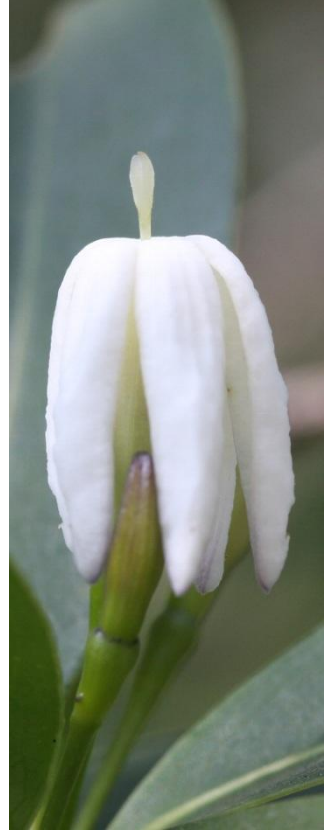
Distribution: Cambodia, Laos, Thailand, Vietnam.

Observation: **Woody spiny vine.** We collected this species in open deciduous stand in plot SB02 of Kampong Chhnang.

Specimen No. 162

Rubiaceae *Prismatomeris filamentosa* Craib

Kmer name: រំដេញមាស [Romdenh Meas]



Distribution: Cambodia, Laos, Thailand.

Observation: Small shrub less than 2m. We collected this species in an open deciduous plot of Kampong Chhnang.

Specimen No. 132

Rubiaceae *Prismatomeris tetrandra* (Roxb.) K. Schum.
subsp. *malayana* (Ridl.) J.T.Johanss

Kmer name: រំដេញមាស [Romdenh Meas]



Distribution: Cambodia, Laos, Malaysia, Myanmar, Singapore, Sri Lanka, Thailand, Vietnam.

Observation: **Small shrub** less than 2m. We collected this species in an open deciduous plot of Kampong Chhnang.

Specimen No. 1109

Rutaceae *Atalantia monophylla* DC.

Kmer name: ដើមក្រូចព្រៃ [Krauch Prey]



Distribution: Cambodia, Laos, Thailand, Vietnam.

Observation: **Small spiny shrub** rarely found in a deciduous plot SB02 of Kampong Chhnang.

Specimen No. 129

Rutaceae *Feroniella lucida* (Scheff.) Swingle

Kmer name: ដើមក្រូសាំង [Kro Saing]



Distribution: Cambodia, Laos, Thailand, Vietnam.

Observation: **Small creeping shrub.** We collected this species along a path near deciduous plot SB01 of Kampong Chhnang.

Specimen No. 553

Rutaceae *Micromelum minutum* (Foster) Wight & Arn.

Kmer name: កញ្ជ្រាភ័រលាយខ្លូ [Kantrok Roleaykhuo], ទម្លាសស្មុង [Tumleay Smorng]



Distribution: Australia, Cambodia, Malaysia, Melanesia, Phillipines, Tonga, Vietnam.
Observation: **Small shrub**, 1.5-2 m tall. We collected this species in the understory of open deciduous forest in Kampong Chhnang.

Specimen No. 1112

Salicaceae *Flacourtia indica* (Burm. f.) Merr.

Kmer name: ដើមក្រខុបព្រៃ [Krokhob Prey]



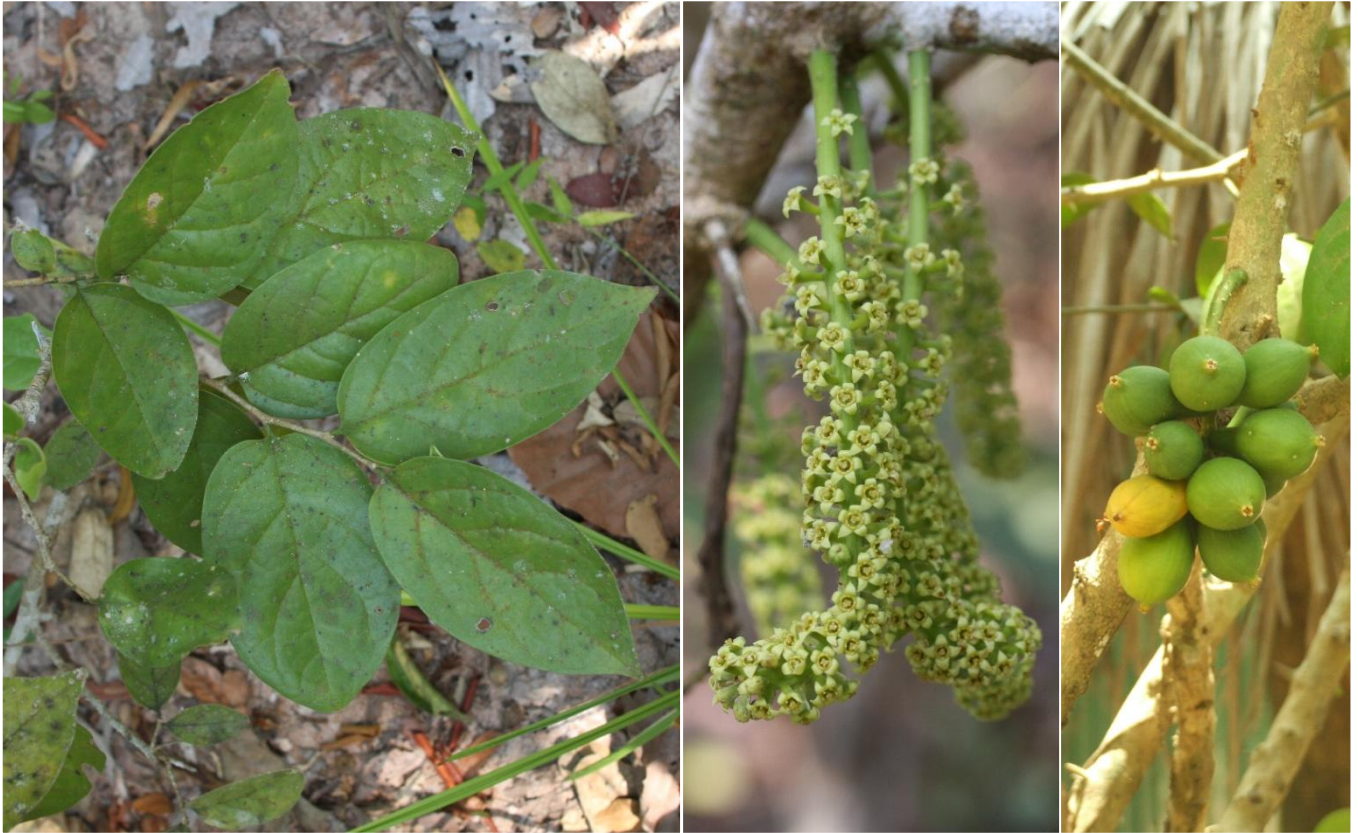
Distribution: Origin unknown, but widely cultivated in pantropical area.

Observation: **Small tree** occasionally found around a deciduous plot SB02 of Kampong Chhnang.

Specimen No. 161

Santalaceae *Scleropyrum pentandrum* (Dennst.) Mabb.

Kmer name: បន្លាប៊ូស [Banla Buos]



Distribution: Cambodia, China, India, Laos, Malaysia, Myanmar, Sri Lanka, Vietnam.

Observation: **Shrub** or **small tree** 1.5-3m tall sporadically found in deciduous stands.

Easily distinguished by spines on the trunk.

Specimen No. 125, 216, 542, 1115

Sapindaceae *Allophylus serratus* (Hiern) Kurz

Kmer name: ដែររោត [Day Rohat], កប្បាសព្រៃ [Kabas Prey]



Distribution: Cambodia, India, Philippines, Vietnam.

Observation: **Woody vine**, collected only once under a fig tree in a deciduous stand near SB01 of Kampong Chhnang. This species is characteristic of leaves acutely serrate.

Specimen No. 550

Sapindaceae *Lepisanthes rubiginosa* (Roxb.) Leenh.

Kmer name: ជំន្រួស [Chunlous]



Distribution: Australia, Cambodia, China, India, Indonesia, Laos, Malaysia, Philippines, Thailand, Vietnam.

Observation: **Small tree** occasionally found in deciduous plots of Kampong Chhnang.
Specimen No. 535

Sapindaceae *Lepisanthes tetraphylla* Radlk.

Kmer name: ជំនួស [Chunluus]



Distribution: Cambodia, Indonesia, Malaysia, Myanmar, Philippines, Sri Lanka, Thailand, Vietnam.

Observation: **Small tree** occasionally found in deciduous plots. This species has glabrous lanceolate leaflets acute at apex and at base, slightly pubescent rachis pulvinate when young, compared with *L. rubiginosa* having yellowish pubescent, oblong leaflets rounded at apex and at base.

Specimen No. 121

Simaroubaceae *Brucea javanica* (L.) Merr.

Kmer name: ប្រមាត់មនុស្ស [Bromat Monus]



Distribution: Australia, Cambodia, China, India, Indonesia, Laos, Malaysia, Myanmar, Philippines, Singapore, Sri Lanka, Vietnam.

Observation: **Small shrub** 0.5-1m tall. We collected this species in deciduous stands near a community forest plot SB02 of Kampong Chhnang.

Specimen No. 177, 1110

Simaroubaceae *Eurycoma longifolia* Jack

Kmer name: អន្ទូងស័រ [Angtung Sor]



Distribution: Cambodia, Indonesia, Laos, Malaysia, Myanmar, Thailand, Vietnam.

Observation: **Small shrub** 0.5-1m tall, common in deciduous stands.

Specimen No. 123, 135

Smilacaceae *Smilax luzonensis* C. Presl

Kmer name: វណ្ណិប័រ្រើស [Vor Porpreus]



Distribution: Cambodia, Malaysia, Philippines, Vietnam.

Observation: **Climber**, found in open deciduous stands. This species is distinct in oblong to rounded leaves concave at apex and glaucous beneath.

Specimen No. 1114

Field photos



Dry season (Jan. 17, 2012)



Rainy season (Sep. 23, 2009)



Rainy season (Sep. 23, 2009)



Nov. 11, 2010

Index to scientific names

<i>Acacia pennata</i> subsp. <i>insuavis</i>	44	<i>Eurycoma longifolia</i>	99
<i>Allophylus serratus</i>	95	<i>Feroniella lucida</i>	91
<i>Amphineurion marginatum</i>	18	<i>Ficus microcarpa</i>	65
<i>Antidesma ghaesembilla</i>	76	<i>Flacourtia indica</i>	93
<i>Aporosa villosa</i>	77	<i>Garcinia cochinchinensis</i>	25
<i>Artabotrys harmandii</i>	11	<i>Garcinia harmandii</i>	26
<i>Artocarpus nitidus</i>	64	<i>Gardenia coronaria</i>	83
<i>Atalantia monophylla</i>	90	<i>Gardenia sootepensis</i>	84
<i>Beilschmiedia roxburghiana</i>	56	<i>Gluta laccifera</i>	8
<i>Bombax anceps</i>	62	<i>Gmelina asiatica</i>	54
<i>Breynia vitis-idaea</i>	78	<i>Irvingia malayana</i>	53
<i>Brucea javanica</i>	98	<i>Ixora javanica</i>	85
<i>Buchanania reticulata</i>	6	<i>Ixora nigricans</i>	86
<i>Buchanania siamensis</i>	7	<i>Knema globularia</i>	70
<i>Calophyllum calaba</i> var. <i>bracteatum</i>	23	<i>Lagerstroemia floribunda</i>	61
<i>Canarium parvum</i>	20	<i>Lepisanthes rubiginosa</i>	96
<i>Canarium subulatum</i>	21	<i>Lepisanthes tetraphylla</i>	97
<i>Cansjera rheedii</i>	75	<i>Litsea glutinosa</i>	57
<i>Carallia brachiata</i>	81	<i>Mangifera duperreana</i>	9
<i>Careya arborea</i>	58	<i>Melastoma saigonense</i>	67
<i>Catunaregam tomentosa</i>	82	<i>Memecylon scutellatum</i>	68
<i>Chukrasia tabularis</i>	69	<i>Microcos tomentosa</i>	63
<i>Connarus cochinchinensis</i>	30	<i>Micromelum minutum</i>	92
<i>Cratoxylum formosum</i>	24	<i>Ochna integerrima</i>	73
<i>Dalbergia lanceolaria</i> subsp. <i>paniculata</i>	45	<i>Olax wightiana</i>	74
<i>Dalbergia thorelii</i>	46	<i>Oxyceros horridus</i>	87
<i>Dalbergia velutina</i>	47	<i>Parinari anamensis</i>	22
<i>Dasymaschalon lomentaceum</i>	12	<i>Peltoporum dasyrrhachis</i>	48
<i>Dendrophthoe pentandra</i>	60	<i>Phyllanthus emblica</i>	79
<i>Dillenia aurea</i>	31	<i>Polyalthia evecta</i>	13
<i>Diospyros castanea</i>	38	<i>Polyalthia luensis</i>	14
<i>Diospyros ehretioides</i>	39	<i>Prismatomeris filamentosa</i>	88
<i>Diospyros lobata</i>	40	<i>Prismatomeris tetrandra</i> subsp. <i>malayana</i>	89
<i>Diospyros pilosanthera</i>	41	<i>Pterocarpus macrocarpus</i>	49
<i>Dipterocarpus obtusifolius</i>	34	<i>Rhodamnia dumetorum</i>	71
<i>Dipterocarpus intricatus</i>	33	<i>Scleropyrum pentandrum</i>	94

<i>Semecarpus cochinchinensis</i>	10
<i>Shorea siamensis</i>	37
<i>Shorea roxburghii</i>	36
<i>Shorea obtusa</i>	35
<i>Sindora siamensis</i>	50
<i>Smilax luzonensis</i>	100
<i>Spatholobus parviflorus</i>	51
<i>Streblus asper</i>	66
<i>Strophanthus caudatus</i>	19
<i>Strychnos nux-vomica</i>	59
<i>Suregada multiflora</i>	42
<i>Syzygium cumini</i>	72
<i>Terminalia alata</i>	27
<i>Terminalia calamansanay</i>	28
<i>Terminalia chebula</i>	29
<i>Tetracera loureiroi</i>	32
<i>Trigonostemon reidioides</i>	43
<i>Uvaria rufa</i>	15
<i>Uvaria siamensis</i>	16
<i>Vitex peduncularis</i>	55
<i>Xylia xylocarpa</i> var. <i>kerrii</i>	52
<i>Xylopiia pierrei</i>	17
<i>Ziziphus ccambodianus</i>	80

Index to Khmer names

កន្ត្រាករលាយខ្នុរ Kantrok Roleaykhuo	92	ដើមត្រាច Trach	33
កប្បាសព្រៃ Kabas Prey	95	ដើមទ្រមែង Tromeng	81
កាំរន្ទះ Kam Runteah	85	ដើមផ្កង់ Thnong	49
ក្តាំងបាយ Kdaing Bay	13	ដើមធ្លក Thlork	22
ក្តាំងបាយ Kdaing Bay	14	ដើមបាក់ដង Bakdornng	83, 84
ក្រាមរមាស Kramromeas	26	ដើមផ្លឹក Phchek	35
គ្រង់ Krung	77	ដើមផ្កង់ Phaong	23
ជំនួស Chunlous	96	ដើមពពាលខែ Popeal Khe	28
ជំនួស Chunluus	97	ដើមពពូលម្រេច Popoul Morech	55
ជ្រៃបាយ Chrey Bay	65	ដើមពពេល Popel	36
ដើមកកោះ Kokoh	50	ដើមពភ្លា Po Phlea	63
ដើមកណ្តាល Kandol	58	ដើមពានគង់ Pian Kong	56
ដើមកន្ទួតព្រៃ Kantuot Prey	79	ដើមព្រីង Pring	72
ដើមក្រខុបព្រៃ Krokob Prey	93	ដើមភ្នំធំ Phlou Thom	31
ដើមក្រពុលបាយ Kropul Bay	57	ដើមមីងម៉ាំង Ming Maing	39
ដើមក្រសាំង Kro Saing	91	ដើមម្រុក្សណ៍បារាំង Morak Baraing	6
ដើមក្រាយស Kray Sor	17	ដើមរកា Rokar	62
ដើមក្រូចព្រៃ Krauch Prey	90	ដើមរាំងភ្នំ Raing Phnom	37
ដើមគ្រើល Krurl	8	ដើមរំដេញ Romdenh	56
ដើមឃ្នាស Khmeas	68	ដើមរំលាយឈាម Romleay Chhiem	70
ដើមចំបក់ Cham Bok	53	ដើមលាំងជ័យ Laingchey	7
ដើមជើងចាប Cheung Chap	12	ដើមលាំងជ័យស្លឹកធំ Laingchey Sleuk Thom	6
ដើមឈើខ្មៅ Chheu Khmao	38, 40	ដើមល្បៀង Longieng	24
ដើមឈ្លឹក Chhlik	27	ដើមល្បៀង Lovieng	82
ដើមដងចប Dornng Chorb	25	ដើមលំពស់ Lum Puas	30
ដើមដង្ហៀបក្តាម Dangkeap Kdam	76	ដើមវល្លិយោង Voryaung	69
ដើមតាឡាត់ Ta Latt	20, 21	ដើមសម៉ី Sa Mor	29
ដើមត្បែង T beng	34	ដើមសុក្រំ So Krom	52
ដើមត្របែកព្រៃ Trobek Prey	61	ដើមស្នាយ Snay	66
ដើមត្រយ៉ាក Troyak	25	ដើមស្នួល Snuol	45
ដើមត្រយីង Tro Yoeung	41	ដើមស្នាក្របី Sma Krabey	70
ដើមត្រសេក Tro Seik	48	ដើមស្លែង Sleng	59

ដើមស្វាយគគីត Svay Kokit	10	វណ្ណិដោះគន់ Vor Doaskun	32
ដើមស្វាយព្រៃ Svay Prey	9	វណ្ណិត្រដក់ Vor Trodak	11
ដើមសំព័រ Sampor	64	វណ្ណិទាស់ Vor Toas	47
ដើមអញ្ចាញ Anhcharnh	54	វណ្ណិទ្រៀលធំ Vor Trial Thom	15
ដែរហាត់ Day Rohat	95	វណ្ណិប៉ប្រើស Vor Porpreus	100
ទម្លាលស្នង Tumleay Smorng	92	វណ្ណិប្រឡៅអំពៃ Voa Prolaoampe	18
ទឹកដោះ Toeuk Doas	43	វណ្ណិមេជ័រ Vor Mechor	19
ទ្រមូងសេក Tromoung Sek	42	វណ្ណិអែម Vor Em	44
ធ្មប់ Thmup	85	វណ្ណិអំពិល Vor Ampel	47
ធ្មងកញ្ចុះ Thmung Kanh Chos	87	ស្នែងគោ Sneng Ko	19
ធ្មញត្រី Thmenh Trey	78	សំកុង Som Kong	56
បញ្ជើក្អែក Banheu Kaek	60	អង្រៀមអង្រៀម Angkrem Angkrom	46
បន្លាបួស Banla Buos	94	អង្កា Angkia	73
បន្លាយុថ្កា Banla Yuthka	87	អង្កាសីល Angkia Sel	73
បាតផ្តិល Bat Phtel	13	អង្រៀង Angkromng	80
បាយញេញ Bay Nhenh	67	អន្លង់ស័ Angtung Sor	99
ប្រមាត់មនុស្ស Bromat Monus	98		
ផ្កាមូលពេជ្រ Phka Mochul Pich	86		
ពពូលអាចម៍សត្វ Popoul Achsat	55		
ពូចអូល Puoch Uol	71		
ព្រីងក្រហម Pring Krohom	72		
ព្រីងបាយ Pring Bay	72		
ភ្នែកព្រាបធំ Phnek Preap Thom	78		
ម្រក្សណ៍ Morak	8		
រំដេញមាស Romdenh Meas	88		
រំដេញមាស Romdenh Meas	89		
វណ្ណិក្រវ៉ាន់ Vor Krovan	16		
វណ្ណិក្រឡាំពៃ Vor Krolampe	18		
វណ្ណិក្រឡិត Vor Krolet	74		
វណ្ណិខ្លាស់ Vor Khchas	75		
វណ្ណិខ្មែ Vor Khnhe	51		
វណ្ណិដោះក្របី Vor Doas Krobey	11		

A picture guide of forest trees in Cambodia I ~ Kampong Chhnang ~
រូបភាពឈើសំបុត្រ អំពីឈើព្រៃនៅកម្ពុជា

- 95 species of 39 families and 76 genera.
- Scientific name and local name
- Over 250 photos and 100 specimens images
- Distribution and observation note for each species
- Specimen No. in Kyushu University (Japan) and Forestry Administration (Cambodia)



Center for Asian Conservation Ecology, Kyushu University,
6-10-1 Hakozaki, Fukuoka. 812-8581, Japan.

June 25, 2012