



Potrero Hill

Eco-Patch

Plant Mixes



CALIFORNIA
NATIVE PLANT
SOCIETY



field collective

www.field-collective.land

Plant study area 1:

Coastal Dune Scrub

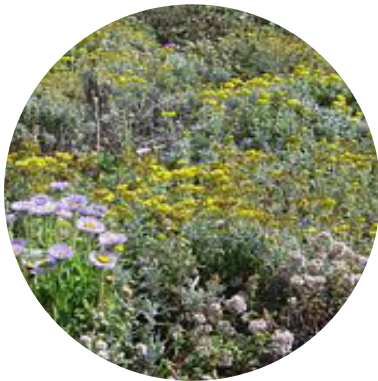


Image credit: <https://calscape.org>
Gartenflo, 2005



Landscape archetype precedents



Fragaria chiloensis



Armeria maritima v californica



Eriogonum latifolium



Eriophyllum staechadifolium

Plant species

Landscape inspiration:

“The dune scrub community is found on inland dunes landward of the foredune community. It is characterized by densely packed shrubs interspersed with scattered areas of grasses, wildflowers, and open sand.” - www.nps.gov

Our design response to test:

- Select plant species that would naturally grow in this community that are native to San Francisco
- Cluster mid-size shrub planting together and cluster lower level planting together so that variation massing/ height variation is clear

Plant study list:

Groundcover Layer (50%)

Beach Strawberry (*Fragaria chiloensis*) *supports Green Hairstreak butterfly

Filler Species, broadcast as seed (5-10%)

Yarrow (*Achillea millefolium*)

Seasonal Layer (25-40%)

California Sea Pink (*Armeria maritima v californica*)

Seaside Daisy (*Erigeron glaucus*)

Structural Layer (10-15%)

Coast Buckwheat (*Eriogonum latifolium*) *supports Green Hairstreak Butterfly

Silver Lupine (*Lupinus albifrons*) *supports Mission Blue Butterfly & Gray Hairstreak Butterfly

Seaside Woolly Sunflower (*Eriophyllum staechadifolium*)

Plant study area 1:

Coastal Dune Scrub



APRIL 14, 2021
Silver Lupine (*Lupinus albifrons*)



APRIL 14, 2021
California Sea Pink (*Armeria maritima v. californica*)



APRIL 11, 2021
Seaside Daisy (*Erigeron glaucus*) & Coast Buckwheat (*Eriogonum latifolium*)



JUNE 12, 2021
California Sea Pink (*Armeria maritima v. californica*)



JUNE 3, 2021
Seaside Woolly Sunflower (*Eriophyllum staechadifolium*)

Plant study area 2:

Beach Strawberry Coastal Prairie



©JW - <https://www.calfloranursery.com/plants/calamagrostis-nutkaensis-king>

Landscape archetype precedent



Fragaria chiloensis



Phacelia californica



Calamagrostis nutkaensis



Deschampsia cespitosa

Plant species

Landscape inspiration:

A landscape of glossy green colors contrasting with fine grasses/ grass-like textures, with fountain and vase shape plants emerging from the groundcover layer in distinct tufts.

Our design response to test:

- Use groundcover plants with glossy textures that will create a homogeneously flat lower layer
- Leave enough space between grasses / clusters of grasses so the plant form is visible

Plant study list:

Groundcover Layer (50%)

Beach Strawberry (*Fragaria chiloensis*) *supports Green Hairstreak butterfly

Filler Species, broadcast as seed (5-10%)

Miniature Lupine (*Lupinus bicolor*)

Seasonal Layer (25-40%)

Douglas Iris (*Iris douglasiana*)

Manycolor Lupine (*Lupinus variicolor*) *supports Mission Blue Butterfly

California Scorpionweed (*Phacelia californica*) *supports Mission Blue Butterfly

Structural Layer (10-15%)

Pacific Reedgrass (*Calamagrostis nutkaensis*)

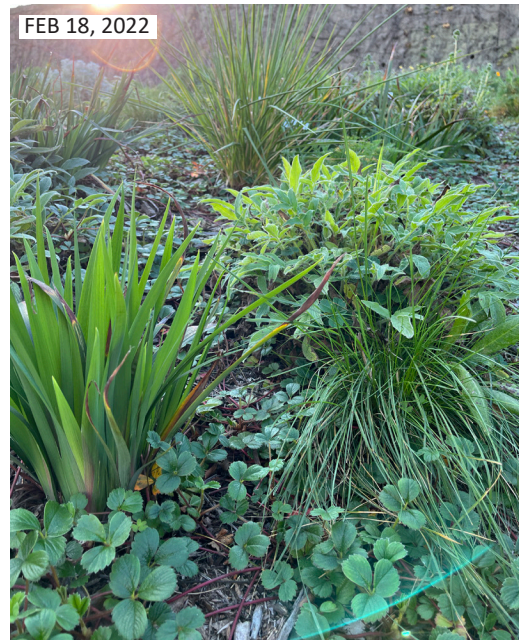
Tufted Hairgrass (*Deschampsia cespitosa*)

Plant study area 2:

Beach Strawberry Coastal Prairie



Beach Strawberry Coastal Prairie plant mix



Beach Strawberry, Douglas Iris, California Scorpionweed & Tufted Hairgrass



California Scorpionweed (*Phacelia californica*) gets a visit from a Yellow-Faced Bumble Bee (*Bombus vosnesenskii*)



California Scorpionweed (*Phacelia californica*) with Pacific Reedgrass (*Calamagrostis nutkaensis*) beyond

Plant study area 3:

Fescue Coastal Prairie



Landscape archetype precedents



Achillea millefolium
'Sonoma Coast'



Iris douglasiana



Festuca idahoensis



Artemisia pycnocephala

Plant species

Landscape inspiration:

Waves of blue-grey shrubs and grasses moving in response to the wind, with white and cream inflorescences that appear to float above the waves.

Our design response to test:

- Wave-like swathes of *Festuca idahoensis* as the dominant species punctuated with similarly colored but more textural shrubs such as the *Artemisia pycnocephala*
- *Iris douglasiana* to be a blade-like focal plant and provide contrast to the fine textures of the other planting

Plant study list:

Groundcover Layer (50%)

California Ponymsfoot (*Dichondra donelliana*)

Sonoma Coast Yarrow (*Achillea millefolium* 'Sonoma Coast')

Filler Species, broadcast as seed (5-10%)

Yarrow (*Achillea millefolium*)

Seasonal Layer (25-40%)

Douglas Iris (*Iris douglasiana*)

Structural Layer (10-15%)

Idaho Fescue (*Festuca idahoensis*)

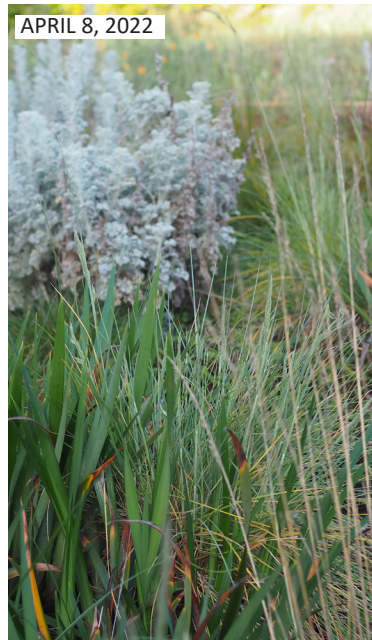
Dune Sagewort (*Artemisia pycnocephala*)

Plant study area 3:

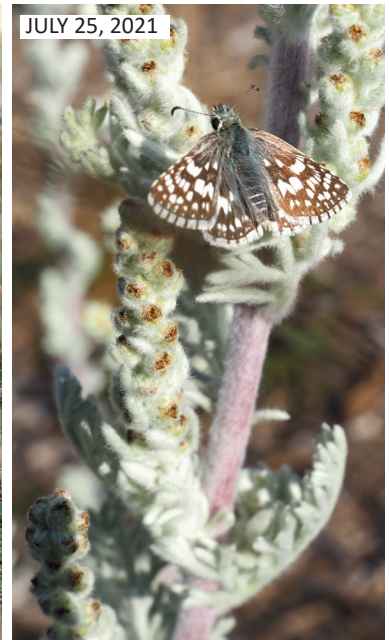
Fescue Coastal Prairie



MARCH 21, 2022
Sonoma Coast Yarrow (*Achillea millefolium* 'Sonoma Coast') & Idaho Fescue (*Festuca idahoensis*)



APRIL 8, 2022
Douglas Iris (*Iris douglasiana*), Idaho Fescue (*Festuca idahoensis*)



JULY 25, 2021
Common Checkered Skipper on Dune Sagewort (*Artemesia pycnocephala*)



FEB 18, 2022
Idaho Fescue (*Festuca idahoensis*) & Dune Sagewort (*Artemesia pycnocephala*)



JULY 25, 2021
Idaho Fescue (*Festuca idahoensis*) & Dune Sagewort (*Artemesia pycnocephala*)

Plant study area 4:

Coyote Bush Scrub



Image credits: www.laspilatas.com/nature-of-california/communities/coastal-sage-scrub

Landscape archetype precedents



Baccharis pilularis
spp pilularis



Eschscholzia californica



Mimulus aurantiacus



Acmispon glaber

Plant species

Landscape inspiration:

“Sclerophyllous (hard-leaved) plants commonly form the foundation of this plant community. They have small, hard leaves, that roll up, under, or fall off during the normal summer drought.” - www.laspilatas.com
Dominated by the aroma of coyote bush, a characteristic of many hikes through native chapparel and scrub.

Our design response to test:

- Grayish green blanket of prostrate coyote bush setting an evergreen framework for seasonally dynamic and deciduous companion planting
- Use plants of similar heights with dusty blues, golds, and pink colors

Plant study list:

Groundcover Layer (50%)

Prostrate Coyote Bush (*Baccharis pilularis spp pilularis*)

Filler Species, broadcast as seed (5-10%)

California Poppy (*Eschscholzia californica*)

Seasonal Layer (25-40%)

Nude Buckwheat (*Eriogonum nudum var. nudum*)

Sticky Monkey Flower (*Mimulus aurantiacus*)

Structural Layer (10-15%)

Deerweed (*Acmispon glaber*) *supports Green Hairstreak Butterfly

California Sagebrush (*Artemisia californica*)

Coast Buckwheat (*Eriogonum latifolium*)

Plant study area 4:

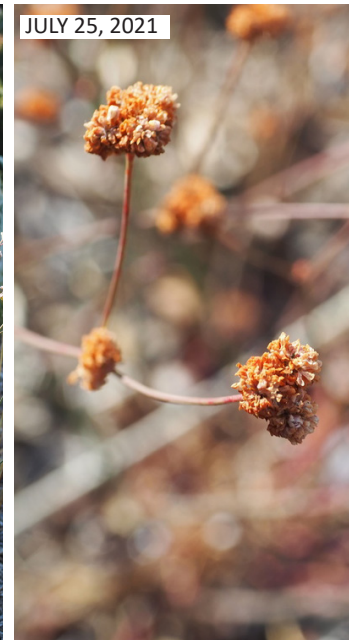
Coyote Bush Scrub



Nude Buckwheat (*Eriogonum nudum* var. *nudum*)



Nude Buckwheat (*Eriogonum nudum* var. *nudum*)



Nude Buckwheat (*Eriogonum nudum* var. *nudum*)



Deerweed (*Acmispon glaber*)



Deerweed (*Acmispon glaber*)



Sticky Monkey Flower (*Mimulus aurantiacus*)

Plant study area 5:

Coffeeberry Scrub



Landscape archetype precedent



Frangula californica
'Mound San Bruno'



Stipa pulchra



Ceanothus thyrsiflorus



Quercus agrifolia

Plant species

Landscape inspiration:

An edge condition of an oak woodland that includes plants that are compatible underneath a canopy of oak trees, with glossy, deep green leaves of different sizes and types that create varied texture.

Our design response to test:

- A braided river of coffeeberry with clusters/pockets of grasses emerging out of it with just a few individual ceanothus

Plant study list:

Groundcover Layer (50%)

Mound San Bruno California Coffeeberry (*Frangula californica* 'Mound San Bruno')

*supports Gray Hairstreak Butterfly & Pale Tiger Swallowtail Butterfly

Filler Species, broadcast as seed (5-10%)

Purple Needlegrass (*Stipa pulchra*)

Seasonal Layer (25-40%)

California Melicgrass (*Melica californica*)

Douglas Iris (*Iris douglasiana*)

Structural Layer (10-15%)

Blueblossom Ceanothus (*Ceanothus thyrsiflorus*)

Coast Live Oak (*Quercus agrifolia*) *existing tree *supports California Sister Butterfly

Plant study area 5:

Coffeeberry Scrub



Douglas Iris (*Iris douglasiana*)



Mound San Bruno California Coffeeberry (*Frangula californica* 'Mound San Bruno')



Blueblossom Ceanothus (*Ceanothus thyrsiflorus*)



Blueblossom Ceanothus (*Ceanothus thyrsiflorus*)

Plant study area 6:

Oak Understory



Image credit: www.ucanr.edu/blogs/napanewspaper/index.cfm?tagname=tanoak

Landscape archetype precedent



Clinopodium douglasii



Salvia spathacea



Ribes sanguineum var.
Glutinosum



Quercus agrifolia

Plant species

Landscape inspiration:

An oak woodland understory with low swathes of medium height, lush, shade tolerant planting with singular vertical elements rising above.

Our design response to test:

- Substantial swathes of planting tucked in between large areas of groundcovers - a green 'mulch' that mimics the leaf litter beneath the oak
- Use of dark green plants to evoke quality of shade

Plant study list:

Groundcover Layer (50%)

Yerba Buena (*Clinopodium douglasii*)

Filler Species, broadcast as seed (5-10%)

Purple Needlegrass (*Stipa pulchra*)

Seasonal Layer (25-40%)

Pink Flowering Currant (*Ribes sanguineum* var. *Glutinosum*)

Hummingbird Sage (*Salvia spathacea*)

Douglas Iris (*Iris douglasiana*)

Structural Layer (10-15%)

California Melicgrass (*Melica californica*)

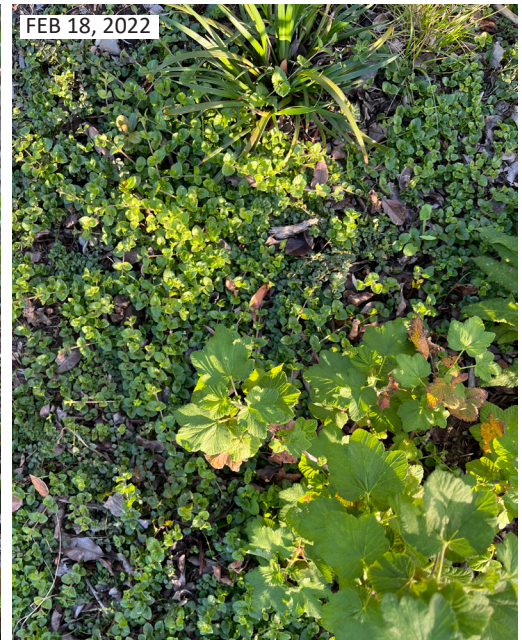
Coast Live Oak (*Quercus agrifolia*) *existing tree *supports California Sister Butterfly

Plant study area 6:

Oak Understory



APRIL 25, 2021
Yerba Buena (*Clinopodium douglasii*), Douglas Iris (*Iris douglasiana*) & Hummingbird Sage (*Salvia spathacea*)



FEB 18, 2022
Yerba Buena (*Clinopodium douglasii*) & Pink Flowering Currant (*Ribes sanguineum* var. *Glutinosum*)



APRIL 14, 2021
Yerba Buena (*Clinopodium douglasii*) & Douglas Iris (*Iris douglasiana*)



APRIL 14, 2021
Hummingbird Sage (*Salvia spathacea*)



JULY 6, 2021
Hummingbird Sage (*Salvia spathacea*) & California Melicgrass (*Melica californica*) beyond

Plant study area 7:

Oak Savanna



©SK- <https://www.calfloranursery.com/plants/quercus-agrifolia>

Landscape archetype precedents



Carex praegracilis



Lupinus nanus



Tritelia laxa



Koeleria macrantha

Plant species

Landscape inspiration:

An oak grassland where golden grasses provide a foil for inflorescence, textural and sculptural seed pods, and oaks.

Our design response to test:

- Homogeneous grasses as the base with random smatterings of annuals and herbaceous perennials that provide seasonal interest
- Evergreen *Carex praegracilis* as a homogeneous base for a mass of grasses, with taller, more seasonally dynamic and ethereal grasses such as *Stipa pulchra* and *Koeleria macrantha* creating a halo above

Plant study list:

Groundcover Layer (50%)

Clustered Field Sedge (*Carex praegracilis*) *supports Umber Skipper Butterfly

Filler Species, broadcast as seed (5-10%)

Purple Needlegrass (*Stipa pulchra*)

Miniature Lupine (*Lupinus bicolor*)

Sky Lupine (*Lupinus nanus*)

Dune Gilia (*Gilia capitata ssp. chamissonis*)

Tomcat Clover (*Trifolium willdenovii*)

Seasonal Layer (25-40%)

Cobwebby thistle (*Cirsium occidentale var. occidentale*)

Ithuriel's Spear (*Tritelia laxa*)

Coyote Mint (*Monardella villosa*)

Structural Layer (10-15%)

Prairie Junegrass (*Koeleria macrantha*)

Plant study area 7:

Oak Savanna



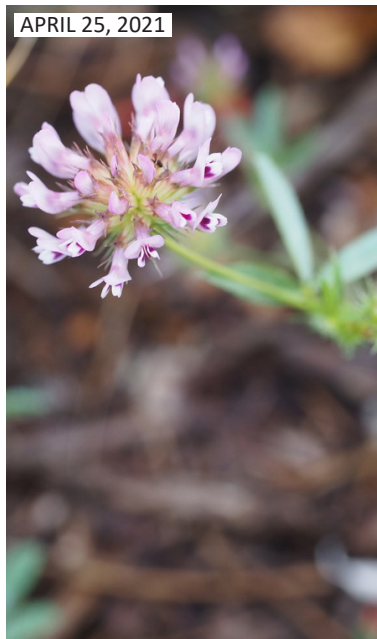
APRIL 12, 2021
Miniature Lupine (*Lupinus bicolor*) & Ithuriel's Spear (*Triteleia laxa*)



MAY 24, 2021
Coyote Mint (*Monardella villosa*) & Dune Gilia (*Gilia capitata* ssp. *chamissonis*)



MAY 24, 2021
Prairie Junegrass (*Koeleria macrantha*), Coyote Mint (*Monardella villosa*) & Dune Gilia (*Gilia capitata* ssp. *chamissonis*) beyond



APRIL 25, 2021
Tomcat Clover (*Trifolium willdenovii*)



MARCH 21, 2021
Cobwebby thistle (*Cirsium occidentale* var. *occidentale*) amongst seedlings of Miniature Lupine (*Lupinus bicolor*) & Dune Gilia (*Gilia capitata* ssp. *chamissonis*)

Plant study area 8:

Serpentine Meadow



Image credit: <https://www.usbr.gov/mp/cvpcp/>



© Lech Naumovich - <https://ebcnps.org/news/serpentine-prairie-2020-06/>

Landscape archetype precedents



Carex praegracilis



Castilleja exserta



Clarkia rubicunda



Plantago erecta

Plant species

Landscape inspiration:

A serpentine meadow consisting of a dynamic landscape of diverse grasses and wildflowers. Includes greens, yellows and pinks that are uniformly layered across the plane.

Our design response to test:

- High, medium, and low layers of inflorescences within a homogeneous matrix of grasses

Plant study list:

Groundcover Layer (50%)

Clustered Field Sedge (*Carex praegracilis*) *supports Umber Skipper Butterfly

Filler Species, broadcast as seed (5-10%)

Purple Owl's Clover (*Castilleja exserta*) *supports Bay Checkerspot Butterfly

Ruby Chalice Clarkia (*Clarkia rubicunda*)

California Goldfields (*Lasthenia californica* ssp. *californica*)

Seasonal Layer (25-40%)

Franciscan Wallflower (*Erysimum franciscanum*) *supports San Bruno Elfin Butterfly

Dotseed Plantain (*Plantago erecta*) *supports Bay Checkerspot Butterfly

Structural Layer (10-15%)

Idaho Fescue (*Festuca idahoensis*)

California Fescue (*Festuca californica*)

California Melicgrass (*Melica californica*)

Plant study area 8:

Serpentine Meadow



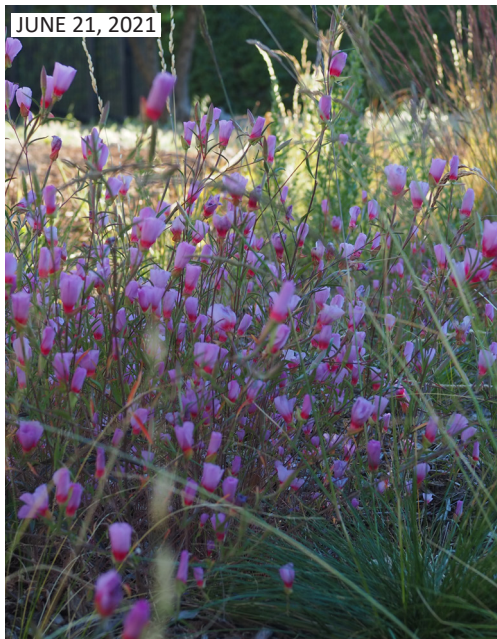
APRIL 14, 2021
Dotseed Plantain (*Plantago erecta*)



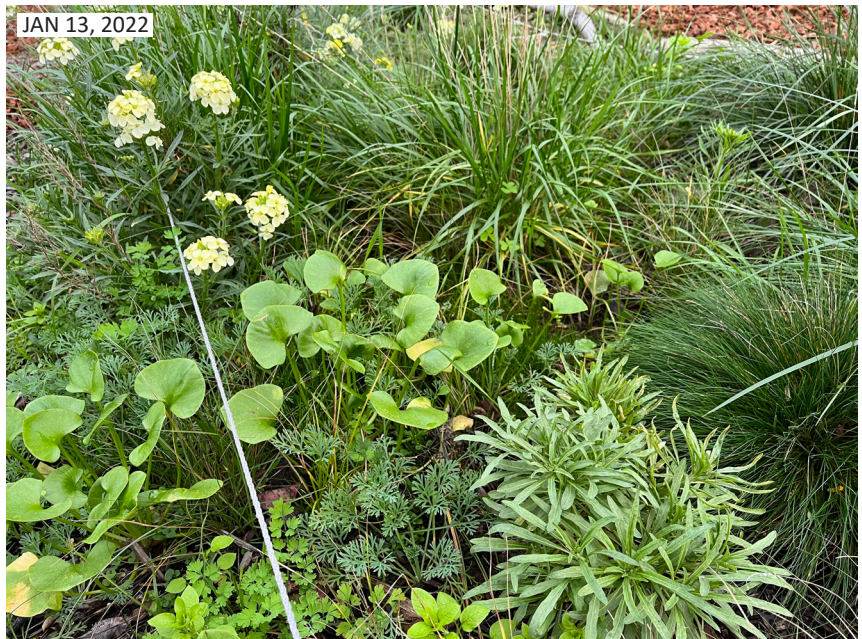
APRIL 8, 2021
California Melicgrass (*Melica californica*)
& California Fescue (*Festuca californica*)



MARCH 21, 2022
Franciscan Wallflower (*Erysimum franciscanum*)



JUNE 21, 2021
Ruby Chalice Clarkia (*Clarkia rubicunda*)



JAN 13, 2022
The Serpentine Meadow plant mix with Miner's Lettuce (*Montia perfoliata*)