

LAO PEOPLE'S DEMOCRATIC REPUBLIC PLANTS of SAVANNAKHET PROVINCE

1

Djaja Doel Soejarto^{1,2}, Bethany Elkington^{1,2}, Kongmany Sydara³, Onelivay Souliya³, and Mouachanh Xayveu³

¹University of Illinois at Chicago, ²Field Museum of Natural History, ³Institute of Traditional Medicine, Vientiane, Lao PDR

Photos by: D. D. Soejarto

Produced with support from the Program Project Grant P01-CA125066 (2007-2019) from the National Cancer Institute, National Institutes of Health, Bethesda, Maryland, U.S.A.; the Ohio State University, Columbus Ohio; the University of Illinois at Chicago and the Field Museum of Natural History, Chicago, USA.

© Doel Soejarto [dsoejarto@fieldmuseum.org], Bethany Elkington, and Kongmany Sydara.

[fieldguides.fieldmuseum.org] [1014] version 1 4/2018



Advanced secondary forest at Savannakhet Medicinal Biodiversity Preserve (MBP) located about 19 km east of the capital city Savannakhet during the months of November and December.

The following images are preserved as voucher herbarium specimens in deposit at the Herbarium of the Institute of Traditional Medicine in Vientiane, Laos (Lao People's Democratic Republic) and at the J. D. Searle Herbarium of the Field Museum of Natural History (Chicago, USA). They were collected as part of a project in the discovery of anticancer agents from plants.

Collections were made primarily in the advanced secondary lowland tropical rainforest of the Medicinal Biodiversity Preserve of Savannakhet, located about 19 km east of the Savannakhet capital city of Savannakhet. Sporadic collections were also made in the degraded forests in the surrounding areas.

This research was performed under a collaborative agreement between the University of Illinois at Chicago and the Institute of Traditional Medicine of the Ministry of Health of Laos.



1

Melodorum fruticosum 15235
ANNONACEAE



2

Mitrephora thorelii 15269
ANNONACEAE

LAO PEOPLE'S DEMOCRATIC REPUBLIC PLANTS of SAVANNAKHET PROVINCE

2

¹ Djaja Doel Soejarto ^{1,2}, Bethany Elkington ^{1,2}, Kongmany Sydara ³, Onelivay Souliya ³, and Mouachanh Xayveu ³
University of Illinois at Chicago, ²Field Museum of Natural History, ³Institute of Traditional Medicine, Vientiane, Lao PDR

Photos by: D. D. Soejarto.

Produced with support from the Program Project Grant P01-CA125066 (2007-2019) from the National Cancer Institute, National Institutes of Health, Bethesda, Maryland, U.S.A.; the Ohio State University, Columbus, Ohio; the University of Illinois at Chicago and the Field Museum, Chicago, USA

© Doel Soejarto [dsoejarto@fieldmuseum.org], Bethany Elkington, and Kongmany Sydara.

[fieldguides.fieldmuseum.org]

[1014] version 1 4/2018



3 *Aganosma marginata* 15268
APOCYNACEAE

4 *Marsdenia glabra*
APOCYNACEAE



4 *Marsdenia glabra* 15248
APOCYNACEAE

5 *Marsdenia urceolata* 15247
APOCYNACEAE



5 *Marsdenia urceolata* 15247
APOCYNACEAE

6 *Urceola rosea* 14946
APOCYNACEAE



7 *Willughbeia kontumensis* 15262
APOCYNACEAE

LAO PEOPLE'S DEMOCRATIC REPUBLIC PLANTS of SAVANNAKHET PROVINCE

Djaja Doel Soejarto^{1,2}, Bethany Elkington^{1,2}, Kongmany Sydara³, Onelivay Souliya³, and Mouachanh Xayveu³

¹University of Illinois at Chicago, ²Field Museum of Natural History, ³Institute of Traditional Medicine, Vientiane, Lao PDR

Photos by: D. D. Soejarto.

Produced with support from the Program Project Grant P01-CA125066 (2007-2019) from the National Cancer Institute, National Institutes of Health, Bethesda, Maryland, U.S.A.; the Ohio State University, Columbus, Ohio; the University of Illinois at Chicago and the Field Museum of Natural History, Chicago, USA.

© Doel Soejarto [dsoejarto@fieldmuseum.org], Bethany Elkington, and Kongmany Sydara.

[fieldguides.fieldmuseum.org]

[1014] version 1 4/2018



8



Epipremnum giganteum 15270
ARACEAE



9 *Arenga caudata* 14926
ARECACEAE



9

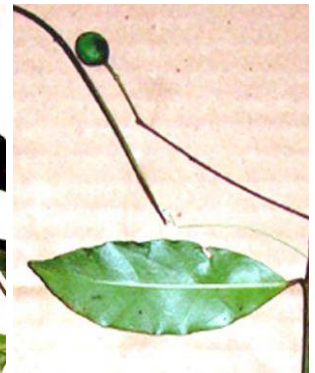
Arenga caudata 14926
ARECACEAE



10



Capparis erycibe 14938
CAPPARACEAE



11



Salacia cochinchinensis 14909
CELASTRACEAE



12 *Salacia verrucosa* 14943
CELASTRACEAE



12



Salacia verrucosa 14943
CELASTRACEAE



13

Parinari annamensis 15250
CHRYSOBALANACEAE



LAO PEOPLE'S DEMOCRATIC REPUBLIC PLANTS of SAVANNAKHET PROVINCE

¹ Djaja Doel Soejarto ^{1,2}, Bethany Elkington ^{1,2}, Kongmany Sydara ³, Onelivay Souliya ³, and Mouachanh Xayveu ³
University of Illinois at Chicago, ² Field Museum of Natural History, ³ Institute of Traditional Medicine, Vientiane, Lao PDR

Photos by: D. D. Soejarto
Produced with support from the Program Project Grant P01-CA125066 (2007-2019) from the National Cancer Institute, National Institutes of Health, Bethesda, Maryland, U.S.A.; the Ohio State University, Columbus, Ohio; the University of Illinois at Chicago and the Field Museum, Chicago, USA
© Doel Soejarto [dscejarto@fieldmuseum.org], Bethany Elkington, and Kongmany Sydara. [fieldguides.fieldmuseum.org] [1014] version 1 4/2018



13 *Parinari annamensis* 15250
CHRYSOBALANACEAE



14 *Calophyllum calaba* 15264
CLUSIACEAE



15 *Calycopteris floribunda* 15243
COMBRETACEAE



16 *Combretum pilosum*
COMBRETACEAE



16 *Combretum pilosum* 15242
COMBRETACEAE



17 *Cnestis palala* 15245
CONNARACEAE



17 *Cnestis palala* 15245
CONNARACEAE



18 *Ellipanthus tomentosus*
CONNARACEAE

LAO PEOPLE'S DEMOCRATIC REPUBLIC PLANTS of SAVANNAKHET PROVINCE

Djaja Doel Soejarto^{1,2}, Bethany Elkington^{1,2}, Kongmany Sydara³, Onelivay Souliya³, and Mouachanh Xayveu³

¹University of Illinois at Chicago, ²Field Museum of Natural History, ³Institute of Traditional Medicine, Vientiane, Lao PDR

Photos by: D. D. Soejarto

Produced with support from the Program Project Grant P01-CA125066 (2007-2019) from the National Cancer Institute, National Institutes of Health, Bethesda, Maryland, U.S.A.; the Ohio State University, Columbus, Ohio; the University of Illinois at Chicago and the Field Museum of Natural History, Chicago, USA.

© Doel Soejarto [dscejarto@fieldmuseum.org], Bethany Elkington, and Kongmany Sydara.

[fieldguides.fieldmuseum.org]

[1014] version 1 4/2018



18 *Ellipanthus tomentosus* 15236
CONNARACEAE



19 *Dillenia ovata* 15256
DILLENIACEAE



20 *Dipterocarpus intricatus* 15251
DIPTEROCARPACEAE



21 *Diospyros malabarica* 14944, 15272
EBENACEAE



21 *Diospyros malabarica* 14944, 15272
EBENACEAE



22 *Antidesma gracile* 14913
EUPHORBIACEAE



22 *Antidesma gracile* 14913
EUPHORBIACEAE



23 *Aporosa tetrapleura* 15246
EUPHORBIACEAE



LAO PEOPLE'S DEMOCRATIC REPUBLIC PLANTS of SAVANNAKHET PROVINCE

Djaja Doel Soejarto^{1,2}, Bethany Elkington^{1,2}, Kongmany Sydara³, Onelivay Souliya³, and Mouachanh Xayveu³

¹University of Illinois at Chicago, ²Field Museum of Natural History, ³Institute of Traditional Medicine, Vientiane, Lao PDR

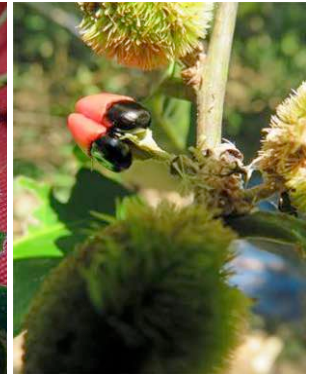
Photos by: D. D. Soejarto

Produced with support from the Program Project Grant P01-CA125066 (2007-2019) from the National Cancer Institute, National Institutes of Health, Bethesda, Maryland, U.S.A.; the Ohio State University, Columbus, Ohio; the University of Illinois at Chicago and the Field Museum, Chicago, USA

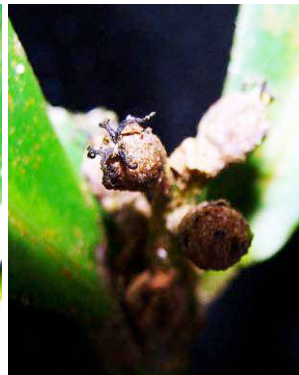
© Doel Soejarto [dsoejarto@fieldmuseum.org], Bethany Elkington, and Kongmany Sydara.

[fieldguides.fieldmuseum.org]

[1014] version 1 4/2018



24 *Chaetocarpus castanocarpus* 14901
EUPHORBIACEAE



25 *Croton cf. dodecamerus* 14929
EUPHORBIACEAE

26 *Croton poilanei* 15257
EUPHORBIACEAE



26 *Croton poilanei* 15257
EUPHORBIACEAE

27 *Hymenocardia punctata* 15266
EUPHORBIACEAE



28 *Trigonostemon flavidus* 14932
EUPHORBIACEAE

LAO PEOPLE'S DEMOCRATIC REPUBLIC PLANTS of SAVANNAKHET PROVINCE

¹Djaja Doel Soejarto^{1,2}, ²Bethany Elkington^{1,2}, ³Kongmany Sydara³, ³Onelivay Souliya³, and ³Mouachanh Xayveu³ University of Illinois at Chicago, ²Field Museum of Natural History, ³Institute of Traditional Medicine, Vientiane, Lao PDR

Photos by: D. D. Soejarto

Produced with support from the Program Project Grant P01-CA125066 (2007-2019) from the National Cancer Institute, National Institutes of Health, Bethesda, Maryland, U.S.A.; the Ohio State University, Columbus, Ohio; the University of Illinois at Chicago and the Field Museum of Natural History, Chicago, USA.

© Doel Soejarto [dscejarto@fieldmuseum.org], Bethany Elkington, and Kongmany Sydara.

[fieldguides.fieldmuseum.org]

[1014] version 1 4/2018



29



Acacia caesia 15249
FABACEAE-MIMOSOIDEAE



30

Bauhinia lakhonensis 14903
FABACEAE-CAESALPINOIDEAE



30



Bauhinia lakhonensis 14903
FABACEAE-CAESALPINOIDEAE



31

Ormosia chevalieri 15237
FABACEAE-PAPILIONOIDEAE



31



Ormosia chevalieri 15237
FABACEAE-PAPILIONOIDEAE



32

Lithocarpus cf. *sabulicolus* 15267
FAGACEAE



32

Lithocarpus cf. *sabulicolus*



33

Cratoxylum formosum 15252
HYPERICACEAE



LAO PEOPLE'S DEMOCRATIC REPUBLIC
PLANTS of SAVANNAKHET PROVINCE

Djaja Doel Soejarto^{1,2}, Bethany Elkington^{1,2}, Kongmany Sydara³, Onelivay Souliya³, and Mouachanh Xayveu³
¹University of Illinois at Chicago, ²Field Museum of Natural History, ³Institute of Traditional Medicine, Vientiane, Lao PDR

Photos by: D. D. Soejarto.

Produced with support from the Program Project Grant P01-CA125066 (2007-2019) from the National Cancer Institute, National Institutes of Health, Bethesda, Maryland, U.S.A.; the Ohio State University, Columbus, Ohio; the University of Illinois at Chicago and the Field Museum, Chicago, USA

© Doel Soejarto [dsoejarto@fieldmuseum.org], Bethany Elkington, and Kongmany Sydara.

[fieldguides.fieldmuseum.org]

[1014] version 1 4/2018



34



Platea cf. latifolia 15253
 ICACINACEAE



35



Cinnamomum cf. bonii 15239
 LAURACEAE



35 *Cinnamomum cf. bonii*
 LAURACEAE



36



Cinnamomum ovatum 15239
 LAURACEAE



37 *Dehaasia* sp. 14922
 LAURACEAE



37

Dehaasia sp. 14922
 LAURACEAE



38



Careya arborea 15261
 LECYTHIDACEAE



39



Grewia tomentosa 14908
 MALVACEAE / TILIACEAE



40



Melastoma affine s.n.
 MELASTOMATACEAE

LAO PEOPLE'S DEMOCRATIC REPUBLIC PLANTS of SAVANNAKHET PROVINCE

¹Djaja Doel Soejarto ^{1,2}, Bethany Elkington ^{1,2}, Kongmany Sydara ³, Onelivay Souliya ³, and Mouachanh Xayveu ³
University of Illinois at Chicago, ²Field Museum of Natural History, ³Institute of Traditional Medicine, Vientiane, Lao PDR

Photos by: D. D. Soejarto.

Produced with support from the Program Project Grant P01-CA125066 (2007-2019) from the National Cancer Institute, National Institutes of Health, Bethesda, Maryland, U.S.A.; the Ohio State University, Columbus, Ohio; the University of Illinois at Chicago and the Field Museum of Natural History, Chicago, USA.

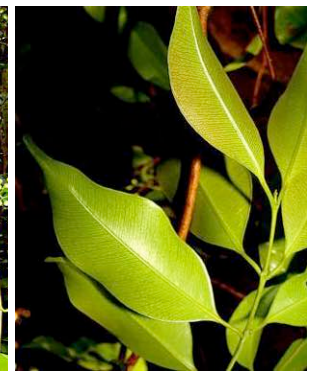
© Doel Soejarto [dsoejarto@fieldmuseum.org], Bethany Elkington, and Kongmany Sydara.

[fieldguides.fieldmuseum.org]

[1014] version 1 4/2018



41 *Taxotrophis caudata* 15241
MORACEAE



42 *Knema globularia* 14945
MYRISTICACEAE

43 *Decaspermum gracilentum* 14941
MYRTACEAE



43 *Decaspermum gracilentum*
MYRTACEAE

44 *Syzygium cf. szemaoense* 15235
MYRTACEAE



44 *Syzygium cf. szemaoense* 15235
MYRTACEAE

45 *Nepenthes annamensis* 15254
NEPENTHACEAE

LAO PEOPLE'S DEMOCRATIC REPUBLIC
PLANTS of SAVANNAKHET PROVINCE

Djaja Doel Soejarto^{1,2}, Bethany Elkington^{1,2}, Kongmany Sydara³, Onelivay Souliya³, and Mouachanh Xayveu³

¹University of Illinois at Chicago, ²Field Museum of Natural History, ³Institute of Traditional Medicine, Vientiane, Lao PDR

Photos by: D. D. Soejarto.

Produced with support from the Program Project Grant P01-CA125066 (2007-2019) from the National Cancer Institute, National Institutes of Health, Bethesda, Maryland, U.S.A.; the Ohio State University, Columbus, Ohio; the University of Illinois at Chicago and the Field Museum, Chicago, USA

© Doel Soejarto [dsoejarto@fieldmuseum.org], Bethany Elkington, and Kongmany Sydara.

[fieldguides.fieldmuseum.org]

[1014] version 1 4/2018



46



Campylospermum serratum 14905
 OCHNACEAE

47 *Ochna integerrima* 15258
 OCHNACEAE



47



47



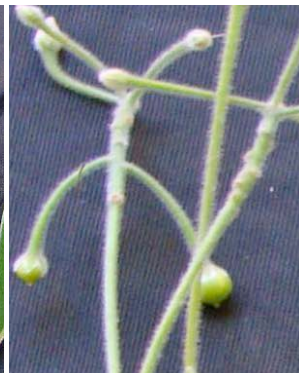
Ochna integerrima 15271
 OCHNACEAE



48 *Ardisia* cf. *solanacea*
 PRIMULACEAE



48



Ardisia cf. *solanacea* 14928
 PRIMULACEAE-MYRSINOIDEAE



49



Gouania javanica 14949
 RHAMNACEAE



49



Gouania javanica 14949
 RHAMNACEAE



50



Carallia brachiata 14937
 RHIZOPHORACEAE



LAO PEOPLE'S DEMOCRATIC REPUBLIC PLANTS of SAVANNAKHET PROVINCE

¹Djaja Doel Soejarto ^{1,2}, Bethany Elkington ^{1,2}, Kongmany Sydara ³, Onelivay Souliya ³, and Mouachanh Xayveu ³ University of Illinois at Chicago, ²Field Museum of Natural History, ³Institute of Traditional Medicine, Vientiane, Lao PDR

Photos by: D. D. Soejarto

Produced with support from the Program Project Grant P01-CA125066 (2007-2019) from the National Cancer Institute, National Institutes of Health, Bethesda, Maryland, U.S.A.; the Ohio State University, Columbus, Ohio; the University of Illinois at Chicago and the Field Museum of Natural History, Chicago, USA.

© Doel Soejarto [dsoejarto@fieldmuseum.org], Bethany Elkington, and Kongmany Sydara.

[fieldguides.fieldmuseum.org]

[1014] version 1 4/2018



50 *Carallia brachiata* 14937
RHIZOPHORACEAE



51 *Hedyotis hedyotideia* 14927
RUBIACEAE



52 *Hedyotis macrosepala*
RUBIACEAE



52 *Hedyotis macrosepala* 14936
RUBIACEAE



53 *Mussaenda pubescens* 14918
RUBIACEAE



53 *Mussaenda pubescens*
RUBIACEAE



54 *Oxyceros horridus* 14909
RUBIACEAE



55 *Prismatomeris filamentosa*
RUBIACEAE



55 *Prismatomeris filamentosa*
RUBIACEAE



56 *Rothmannia vietnamensis*
RUBIACEAE

LAO PEOPLE'S DEMOCRATIC REPUBLIC
PLANTS of SAVANNAKHET PROVINCE

Djaja Doel Soejarto^{1,2}, Bethany Elkington^{1,2}, Kongmany Sydara³, Onelivay Souliya³, and Mouachanh Xayveu³
¹University of Illinois at Chicago, ²Field Museum of Natural History, ³Institute of Traditional Medicine, Vientiane, Lao PDR

Photos by: D. D. Soejarto
 Produced with support from the Program Project Grant P01-CA125066 (2007-2019) from the National Cancer Institute, National Institutes of Health, Bethesda, Maryland, U.S.A.; the Ohio State University, Columbus, Ohio; the University of Illinois at Chicago and the Field Museum, Chicago, USA
 © Doel Soejarto [dsoejarto@fieldmuseum.org], Bethany Elkington, and Kongmany Sydara. [fieldguides.fieldmuseum.org] [1014] version 1 4/2018



56 *Rothmannia vietnamensis* 14906
 RUBIACEAE



57 *Tarenna* cf. *baviensis* 14934
 RUBIACEAE



57 *Tarenna* cf. *baviensis*
 RUBIACEAE



58 *Tarenna* cf. *annamensis* 14939
 RUBIACEAE



59 *Tarenna tonkinensis* 14912
 RUBIACEAE



59 *Tarenna tonkinensis*
 RUBIACEAE



60 *Acronychia pedunculata* 14942
 RUTACEAE



61 *Micromelum minutum* 15244
 RUTACEAE



62 *Lepsianthes rubiginosa*
 SAPINDACEAE

LAO PEOPLE'S DEMOCRATIC REPUBLIC PLANTS of SAVANNAKHET PROVINCE

13

Djaja Doel Soejarto^{1,2}, Bethany Elkington^{1,2}, Kongmany Sydara³, Onelivay Souliya³, and Mouachanh Xayveu³

¹University of Illinois at Chicago, ²Field Museum of Natural History, ³Institute of Traditional Medicine, Vientiane, Lao PDR

Photos by: D. D. Soejarto

Produced with support from the Program Project Grant P01-CA125066 (2007-2019) from the National Cancer Institute, National Institutes of Health, Bethesda, Maryland, U.S.A.; the Ohio State University, Columbus, Ohio; the University of Illinois at Chicago and the Field Museum of Natural History, Chicago, USA.

© Doel Soejarto [dscejarto@fieldmuseum.org], Bethany Elkington, and Kongmany Sydara.

[fieldguides.fieldmuseum.org]

[1014] version 1 4/2018



63

Lepisanthes rubiginosa 15259
SAPINDACEAE



64

Nephelium hypoleucum 15240
SAPINDACEAE



65

Eurycoma longifolia 14924
SIMAROUBACEAE

66

Smilax glabra 14915
SMILACACEAE



66 *Smilax glabra* 14915
SMILACACEAE

67 *Pterospermum lanceaefolia* 14907
STERCULIACEAE / MALVACEAE

LAO PEOPLE'S DEMOCRATIC REPUBLIC PLANTS of SAVANNAKHET PROVINCE

14

Djaja Doel Soejarto^{1,2}, Bethany Elkington^{1,2}, Kongmany Sydara³, Onelivay Souliya³, and Mouachanh Xayveu³
¹University of Illinois at Chicago, ²Field Museum of Natural History, ³Institute of Traditional Medicine, Vientiane, Lao PDR

Photos by: D. D. Soejarto.

Produced with support from the Program Project Grant P01-CA125066 (2007-2019) from the National Cancer Institute, National Institutes of Health, Bethesda, Maryland, U.S.A.; the Ohio State University, Columbus, Ohio; the University of Illinois at Chicago and the Field Museum, Chicago, USA

© Doel Soejarto [dsoejarto@fieldmuseum.org], Bethany Elkington, and Kongmany Sydara.

[fieldguides.fieldmuseum.org]

[1014] version 1 4/2018



68



69

Clerodendrum schmidtii 14940
VERBENACEAE

Congea tomentosa
VERBENACEAE



69



Congea tomentosa 14902
VERBENACEAE



70



Location of Savannakhet province in Laos



Guard cabin at entrance of Savannakhat MBP

Tetrastigma erubescens 14947
VITACEAE



Advanced secondary forest in the Savannakhet Medicinal Biodiversity Preserve (MBP) in November-December