

Epiphytes/Lithophytes of Mayflower Bocawina NP, BELIZE 1

Bruce K. Holst¹, David Amaya², Ella Baron², Marvin Paredes² & Sally Chambers¹

¹Marie Selby Botanical Gardens, ²Ian Anderson's Caves Branch Botanical Garden

© Marie Selby Botanical Gardens (bholst@selby.org), Ian Anderson's Caves Branch Botanical Garden (ellabaron2014@gmail.com).

Photos by Ella Baron (EB), Bruce Holst (BH), Elma Kay (EK), Marvin Paredes (MP), Dan Perales (DP). Support from Marie Selby Botanical Gardens, Ian Anderson's Caves Branch Jungle Lodge.

[fieldguides.fieldmuseum.org] [1150] version 1 7/2019

Flower and seed-bearing Plants



Monstera acuminata
(Araceae; BH)



Monstera acuminata
(Araceae; EB)



Monstera egregia
(Araceae; BH)



Monstera egregia
(Araceae; BH)



Philodendron fragrantissimum
(Araceae; BH)



Philodendron fragrantissimum
(Araceae; BH)



Philodendron inaequilaterum
(Araceae; BH)



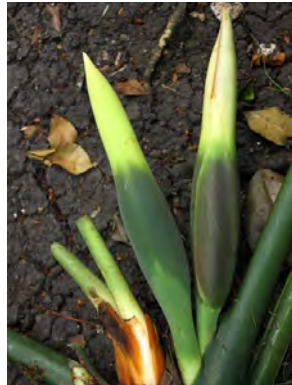
Philodendron inaequilaterum
(Araceae; BH)



Philodendron inaequilaterum
(Araceae; BH)



Philodendron radiatum
(Araceae; BH)



Philodendron radiatum
(Araceae; EB)



Philodendron sp. 1
(Araceae; EB)



Philodendron sp. 1
(Araceae; EB)



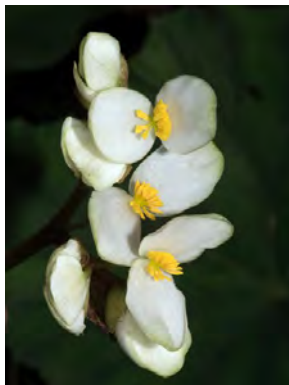
Syngonium podophyllum
(Araceae; BH)



Syngonium podophyllum
(Araceae; BH)



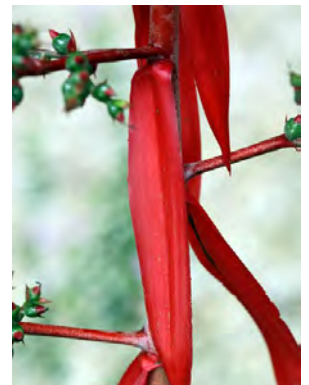
Begonia sericoneura
(Begoniaceae; EB)



Begonia sericoneura
(Begoniaceae; DP)



Aechmea bracteata
(Bromeliaceae; BH)



Aechmea bracteata
(Bromeliaceae; EB)

Epiphytes/Lithophytes of Mayflower Bocawina NP, BELIZE 2

Bruce K. Holst¹, David Amaya², Ella Baron², Marvin Paredes² & Sally Chambers¹

¹Marie Selby Botanical Gardens, ²Ian Anderson's Caves Branch Botanical Garden

© Marie Selby Botanical Gardens (bholst@selby.org), Ian Anderson's Caves Branch Botanical Garden (ellabaron2014@gmail.com).

Photos by Ella Baron (EB), Bruce Holst (BH), Elma Kay (EK), Marvin Paredes (MP), Dan Perales (DP). Support from Marie Selby Botanical Gardens, Ian Anderson's Caves Branch Jungle Lodge.

[fieldguides.fieldmuseum.org] [1150] version 1 7/2019



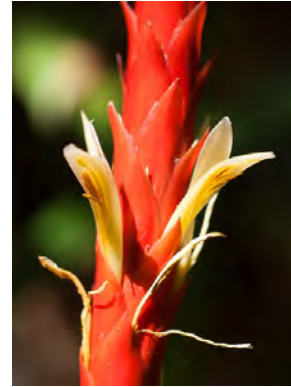
Aechmea lueddemanniana
(Bromeliaceae; MP)



Aechmea lueddemanniana
(Bromeliaceae; PN)



Pitcairnia imbricata
(Bromeliaceae, BH)



Pitcairnia imbricata
(Bromeliaceae, EB)



Tillandsia bulbosa
(Bromeliaceae; BH)



Tillandsia bulbosa
(Bromeliaceae; MP)



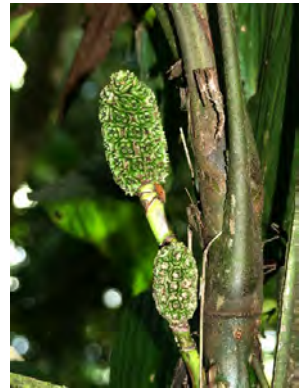
Tillandsia variabilis
(Bromeliaceae; EB)



Tillandsia variabilis
(Bromeliaceae; EB)



Asplundia labela
(Cyclanthaceae, BH)



Asplundia labela
(Cyclanthaceae, BH)



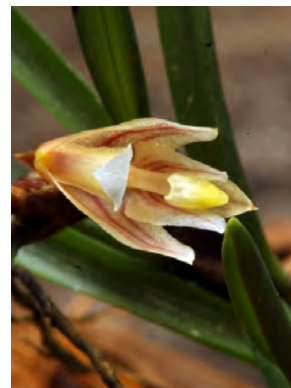
Ficus sp. (Moraceae; BH)
"strangler fig"



Ficus sp. (Moraceae; BH)
"strangler fig"



Christensonella uncata
(Orchidaceae; BH)



Christensonella uncata
(Orchidaceae; EB)



Epidendrum nocturnum
(Orchidaceae; EB)



Epidendrum nocturnum
(Orchidaceae; BH)



Galeandra arundinis
(Orchidaceae; EB)



Galeandra arundinis
(Orchidaceae; MP)



Galeottia grandiflora
(Orchidaceae, BH)

Epiphytes/Lithophytes of Mayflower Bocawina NP, BELIZE 3

Bruce K. Holst¹, David Amaya², Ella Baron², Marvin Paredes² & Sally Chambers¹

¹Marie Selby Botanical Gardens, ²Ian Anderson's Caves Branch Botanical Garden

© Marie Selby Botanical Gardens (bholst@selby.org), Ian Anderson's Caves Branch Botanical Garden (ellabaron2014@gmail.com).

Photos by Ella Baron (EB), Bruce Holst (BH), Elma Kay (EK), Marvin Paredes (MP), Dan Perales (DP). Support from Marie Selby Botanical Gardens, Ian Anderson's Caves Branch Jungle Lodge.

[fieldguides.fieldmuseum.org] [1150] version 1 7/2019



Gongora sp.
(Orchidaceae; MP)



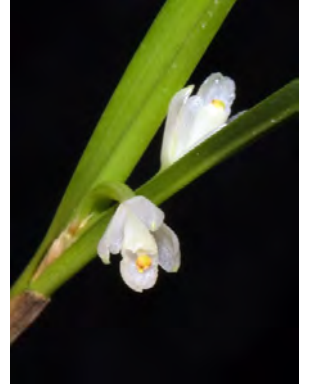
Lophiaris lurida
(Orchidaceae; EB)



Lophiaris lurida
(Orchidaceae; EB)



Scaphyglottis behrii
(Orchidaceae; MP)



Scaphyglottis behrii
(Orchidaceae; MP)



Sobralia fragrans
(Orchidaceae; BH)

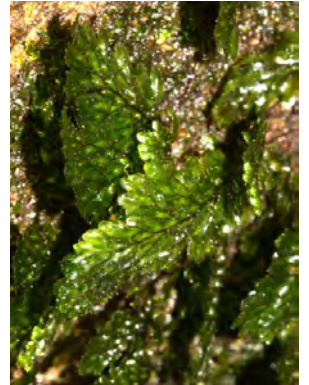


Sobralia fragrans
(Orchidaceae; BH)



Peperomia obtusifolia
(Piperaceae; BH)

Spore-bearing Plants



Hymenophyllum polyanthos
(Hymenophyllaceae; MP)



Hymenophyllum polyanthos
(Hymenophyllaceae; MP)



Trichomanes sp.
(Hymenophyllaceae; BH)



Trichomanes sp., arrow indicates
fertile structures
(Hymenophyllaceae; EB)



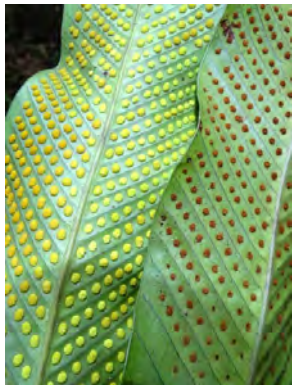
Nephrolepis biserrata
(Nephrolepidaceae; EB)



Campyloneurum sp.
(Polypodiaceae; EB)



Niphidium crassifolium
(Polypodiaceae; BH)



Niphidium crassifolium
(Polypodiaceae; BH)



Adiantum petiolatum
(Pteridaceae; EB)



Adiantum petiolatum, lower surface
(Pteridaceae; EB)



Vittaria sp.
(Pteridaceae; EK)

Epiphytes/Lithophytes of Mayflower Bocawina NP, BELIZE 4

Bruce K. Holst¹, David Amaya², Ella Baron², Marvin Paredes² & Sally Chambers¹

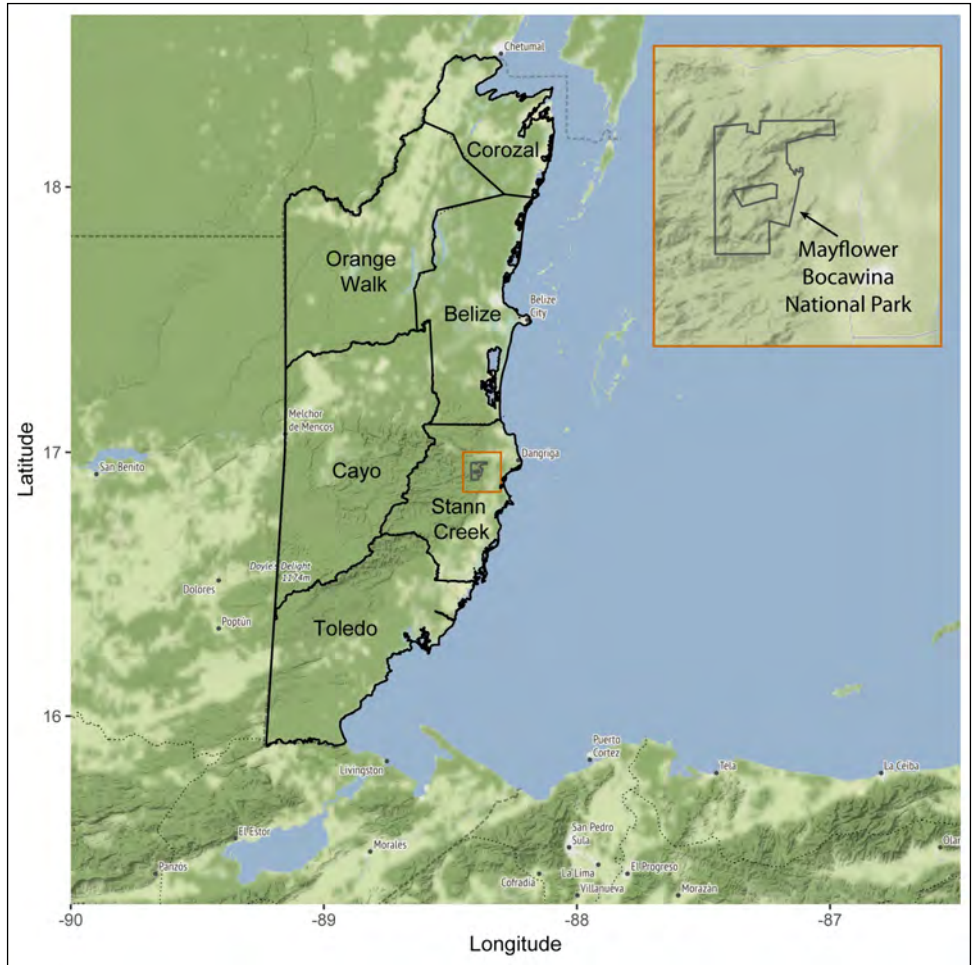
¹Marie Selby Botanical Gardens, ²Ian Anderson's Caves Branch Botanical Garden

© Marie Selby Botanical Gardens (bholst@selby.org), Ian Anderson's Caves Branch Botanical Garden (ellabaron2014@gmail.com).

Photos by Ella Baron (EB), Bruce Holst (BH), Elma Kay (EK), Marvin Paredes (MP), Dan Perales (DP). Support from Marie Selby Botanical Gardens, Ian Anderson's Caves Branch Jungle Lodge.

[fieldguides.fieldmuseum.org] [1150] version 1 7/2019

Mayflower Bocawina National Park was established in 2001. The 7000-acre (2830 ha) park includes areas of Belize's *first* protected area, the Silk Grass Forest Reserve. The Park is co-managed by local stakeholders, Friends of Mayflower, the Belize Forestry Department Conservation Division, and assisted by the Archaeology Department. The idea of making the area into a national park began with the Stann Creek Tour Guide Association. The Association formed a steering committee, with members from other local stakeholder groups (Silk Grass Women's Group, the Maya Cultural Group) and other interested supporters. The UN Development Programme/Global Environmental Fund gave assistance. The Steering Committee, and the district's Women's Development Officer trained 169 stakeholders in preparation for management. Funding for the 20 days training came from Belize's Basic Needs Trust Fund. Their mission was and is to "protect the biodiversity of the area and to assist with the alleviation of the poverty in the stakeholder base."



Map prepared by Sally Chambers

The authors of this guide appreciate the assistance of Park personnel during its preparation.

Images, below left to right: Horticulturists David Amaya and Marvin Paredes use a collecting pole to gather a hemiepiphytic *Ficus* specimen (EB); Antelope Fall Swimming Pool (BH); Antelope Fall (BH).

