

Epiphytes of Monkey Bay Wildlife Sanctuary, BELIZE

Bruce K. Holst¹ & David Amaya, Ella Baron, Pascual Garcia, Marvin Paredes²

¹Marie Selby Botanical Gardens, ²Ian Anderson's Caves Branch Botanical Garden

© Marie Selby Botanical Gardens (bholst@selby.org), Ian Anderson's Caves Branch Botanical Garden (ellabaron2014@gmail.com). Photos by D. Amaya (DA), E. Baron (EB), B. Holst (BH), E. Mallory (EM), P. Nelson (PN), M. Paredes (MP). Support from Marie Selby Botanical Gardens, Ian Anderson's Caves Branch Jungle Lodge.

[fieldguides.fieldmuseum.org]

[1151] version 5/2019

Flower and seed-bearing Plants



Aechmea bracteata
(Bromeliaceae; BH)



Aechmea bracteata
(Bromeliaceae; EB)



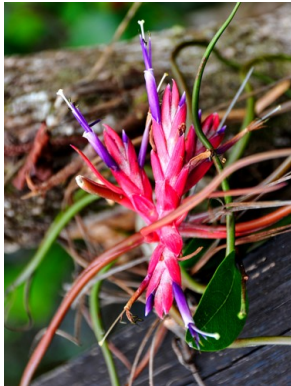
Catopsis berteroniana
(Bromeliaceae; EM)



Catopsis berteroniana
(Bromeliaceae; EB)



Tillandsia bulbosa
(Bromeliaceae; BH)



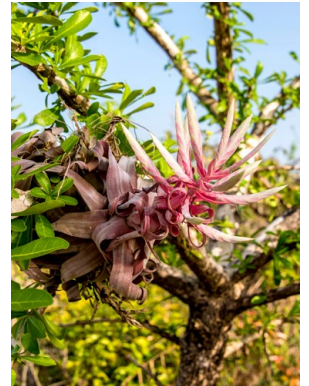
Tillandsia bulbosa
(Bromeliaceae; EM)



Tillandsia dasyliriifolia
(Bromeliaceae; BH)



Tillandsia dasyliriifolia
(Bromeliaceae; PN)



Tillandsia streptophylla
(Bromeliaceae; EM)



Tillandsia streptophylla
(Bromeliaceae; EB)



Vriesea heliconioides
(Bromeliaceae; EB)



Vriesea heliconioides
(Bromeliaceae; EB)



Selenicereus testudo
(Cactaceae; EB)



Selenicereus testudo
(Cactaceae; EB)



Codonanthe sp.
(Gesneriaceae; EB)



Campylocentrum fasciola
(Orchidaceae; DA)



Campylocentrum fasciola
(Orchidaceae; MP)



Female flowers

Catasetum integerrimum
(Orchidaceae; EB)



Male flower

Catasetum integerrimum
(Orchidaceae; EB)

Epiphytes of Monkey Bay Wildlife Sanctuary, BELIZE

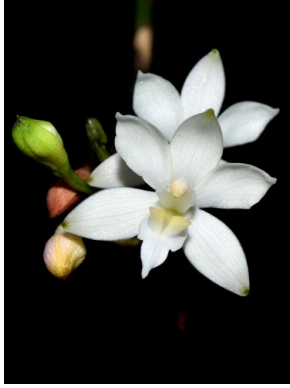
Bruce K. Holst, David Amaya, Ella Baron, Pascual Garcia, Marvin Paredes

[fieldguides.fieldmuseum.org]

[1151] version 5/2019



Caularthron bilamellatum
(Orchidaceae; BH)



Caularthron bilamellatum
(Orchidaceae; EB)



Cohniella ascendens
(Orchidaceae; BH)



Cohniella ascendens
(Orchidaceae; DA)



Encyclia bractescens
(Orchidaceae; EB)



Encyclia bractescens
(Orchidaceae; EB)



Encyclia chloroleuca
(Orchidaceae; EB)



Encyclia chloroleuca
(Orchidaceae; BH)



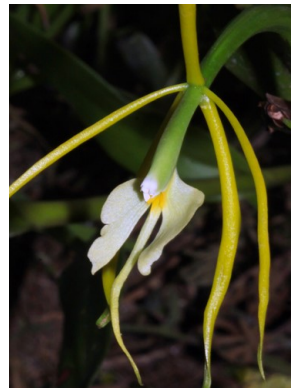
Encyclia guatemalensis
(Orchidaceae; BH)



Encyclia guatemalensis
(Orchidaceae; PN)



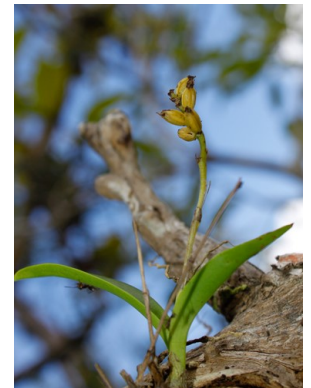
Epidendrum nocturnum
(Orchidaceae; EB)



Epidendrum nocturnum
(Orchidaceae; EB)



Myrmecophila sp.
(Orchidaceae; EM)



Polystachya clavata
(Orchidaceae; DA)



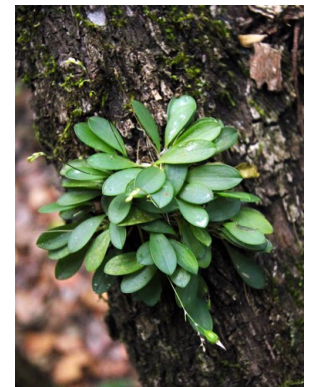
Polystachya clavata
(Orchidaceae; MP)



Scaphyglottis leucantha
(Orchidaceae; DA)



Scaphyglottis leucantha
(Orchidaceae; DA)



Specklinia grobyi
(Orchidaceae; EB)

Epiphytes of Monkey Bay Wildlife Sanctuary, BELIZE

Bruce K. Holst, David Amaya, Ella Baron, Pascual Garcia, Marvin Paredes

[fieldguides.fieldmuseum.org]

[1151] version 5/2019



Specklinia grobyi
(Orchidaceae; EB)



Trichosalpinx blaisdellii
(Orchidaceae; EB)



Trichosalpinx blaisdellii
(Orchidaceae; EB)



Vanilla sp.
(Orchidaceae; DA)



Vanilla sp.
(Orchidaceae; EB)

Spore-bearing Plants



Psilotum nudum
(Psilotaceae; DA)



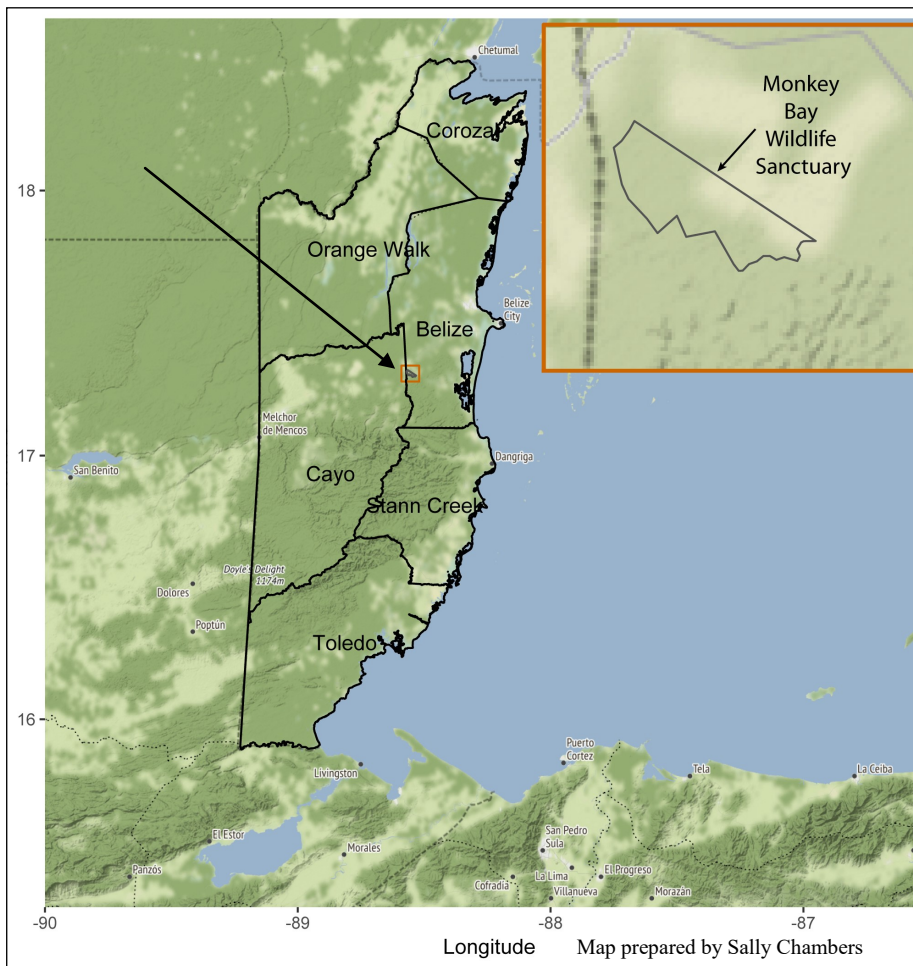
Psilotum nudum
(Psilotaceae; DA)



Vittaria sp.
(Pteridaceae; MP)



Vittaria sp.
(Pteridaceae; DA)



Located in central-eastern Belize, the Belize District is home to a combination of ecosystems including short grass savanna, lowland broadleaf, pine and swamp forests, marine salt marsh, and extensive mangrove forests. Prominent rivers in the region are the Belize and Sibun.

Monkey Bay Wildlife Sanctuary (MBWS) is an environmental education center. Established on Earth Day 1990 it specializes in customized educational programs for students from all around the globe who learn about Belize's natural ecosystems, history, and diverse cultures.

The 1070 acres of privately protected wildlife sanctuary is bordered by the Sibun River which flows from headwaters in the Maya Mountains. Along the river's edge, riparian forest connects the fresh water body with broadleaf forest into the cohune ridge, broken ridge, and savanna area. Monkey Bay Wildlife Sanctuary and adjoining protected area link the Central Belize Corridor, providing safe passage for wild animals across the country.

A guided nature walk at Monkey Bay takes visitors through a variety of habitats and plants that are marked with tags providing scientific and common names. MBWS works to bring conservation awareness to the public, promote environmental education and scientific research, and provide excellent overnight facilities and activity programing for student groups, individuals, and researchers.

For more information visit: www.monkeybaybelize.com.

The authors of this guide appreciate the assistance of Monkey Bay Wildlife Sanctuary during its preparation.