

# Plants of Ubajara National Park, Ceará-Brazil

## Plantas do Parque Nacional de Ubajara, Ceará-Brasil

1

Maria Iracema B. **Loiola**<sup>1,4</sup>, Rayane de T.M. **Ribeiro**<sup>2</sup>, Bruno S. de **Menezes**<sup>1</sup>, Ellen C.D. de **Carvalho**<sup>1</sup>, Bruno C. de **Souza**<sup>1</sup>, Raimundo Luciano S. **Neto**<sup>3</sup>, Luiz W. **Lima-Verde**<sup>4</sup>, Andréa P. **Silveira**<sup>5</sup>, Marcelo O.T. de **Menezes**<sup>6</sup>, Rubens T. de **Queiroz**<sup>7</sup> & Francisca Soares de **Araújo**<sup>1</sup>

<sup>1</sup>UFC, <sup>2</sup>UFRPE, <sup>3</sup>UFPE, <sup>4</sup>Herbário EAC-UFC, <sup>5</sup>UECE, <sup>6</sup>IFCE, <sup>7</sup>UFPB

Fotos/Photos by: M.I.B. Loiola. Produção/Produced by: R.T. M. Ribeiro, Cassie Kelsey & Juliana Philipp

© M.I.B. Loiola [loliola@ufc.br/lasevufc@gmail.com]. Apoio/Support from ICMBio, CNPq, FUNCAP and CAPES.

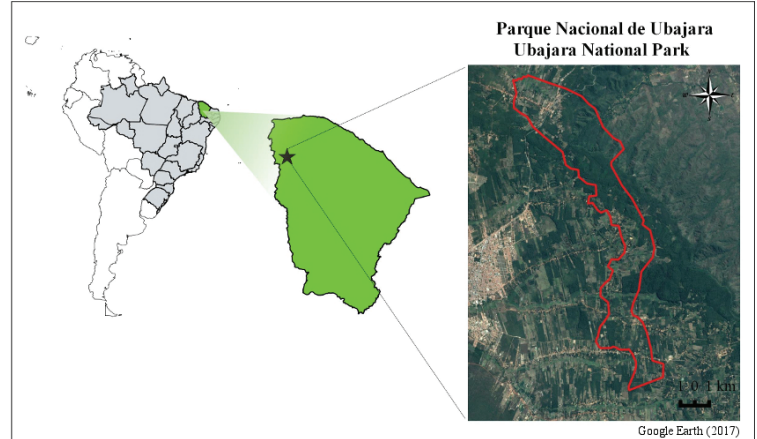
[fieldguides.fieldmuseum.org]

[1192]

versão/version 1

9/2019

O **Parque Nacional de Ubajara**, criado em 30 de abril de 1959, é uma Unidade de Conservação Federal, situado ao Noroeste do estado do Ceará, Brasil. Compreende uma área de 6.288 hectares e abrange os municípios de Ubajara, Tianguá e Frecheirinha e três tipos de vegetação: Floresta Estacional Decidua, Floresta Estacional Sempre Verde e Savana-Estépica (Caatinga). Espera-se que esse guia sirva de base para pesquisadores e não especialistas que tenham interesse em conhecer a flora do semiárido brasileiro que está protegida nessa Unidade de Conservação. Esse guia além de facilitar o processo de reconhecimento e identificação das espécies, subsidiará aos gestores na elaboração de planos de manejo e conservação.



The **Ubajara National Park**, created on April 30, 1959, is a Federal Conservation Unit, located in the Northwest of the state of Ceará, Brazil. It covers an area of 6,288 hectares and the municipalities of Ubajara, Tianguá and Frecheirinha and three types of vegetation: Deciduous Seasonal Forest, Evergreen Seasonal Forest and Savannah-Stepic (Caatinga). It is expected that this guide will serve as a basis for researchers and non-specialists who are interested in knowing the Brazilian semi-arid flora that is protected in this Conservation Unit. This guide, besides facilitating the process of recognition and identification of species, will provide managers in the elaboration of management and conservation plans.



1 *Ruellia asperula*  
ACANTHACEAE



2 *Ruellia geminiflora*  
ACANTHACEAE



3 *Astronium fraxinifolium*  
ANACARDIACEAE



4 *Myracrodruon urundeuva*  
ANACARDIACEAE



5 *Spondias mombin*  
ANACARDIACEAE



6 *Spondias mombin*  
ANACARDIACEAE



7 *Tapirira guianensis*  
ANACARDIACEAE



8 *Tapirira guianensis*  
ANACARDIACEAE



9 *Thyrsodium spruceanum*  
ANACARDIACEAE



10 *Thyrsodium spruceanum*  
ANACARDIACEAE

# Plants of Ubajara National Park, Ceará-Brazil

## Plantas do Parque Nacional de Ubajara, Ceará-Brasil

2

Maria Iracema B. **Loiola**<sup>1,4</sup>, Rayane de T.M. **Ribeiro**<sup>2</sup>, Bruno S. de **Menezes**<sup>1</sup>, Ellen C.D. de **Carvalho**<sup>1</sup>, Bruno C. de **Souza**<sup>1</sup>, Raimundo Luciano S. **Neto**<sup>3</sup>, Luiz W. **Lima-Verde**<sup>4</sup>, Andréa P. **Silveira**<sup>5</sup>, Marcelo O.T. de **Menezes**<sup>6</sup>, Rubens T. de **Queiroz**<sup>7</sup> & Francisca Soares de **Araújo**<sup>1</sup>

<sup>1</sup>UFC, <sup>2</sup>UFRPE, <sup>3</sup>UFPE, <sup>4</sup>Herbário EAC-UFC, <sup>5</sup>UECE, <sup>6</sup>IFCE, <sup>7</sup>UFPB

Fotos/Photos by: M.I.B. Loiola. Produção/Produced by: R.T. M. Ribeiro, Cassie Kelsey & Juliana Philipp

© M.I.B. Loiola [liloila@ufc.br/lasevufc@gmail.com]. Apoio/Support from ICMBio, CNPq, FUNCAP and CAPES.

[fieldguides.fieldmuseum.org]

[1192] versão/version 1 9/2019



11 *Annona coriacea*  
ANNONACEAE



12 *Annona coriacea*  
ANNONACEAE



13 *Annona exsucca*  
ANNONACEAE



14 *Annona leptopetala*  
ANNONACEAE



15 *Guatteria pogonopus*  
ANNONACEAE



16 *Guatteria schomburgkiana*  
ANNONACEAE



17 *Aspidosperma pyriformium*  
APOCYNACEAE



18 *Matelea denticulata*  
APOCYNACEAE



19 *Matelea denticulata*  
APOCYNACEAE



20 *Tabernaemontana catharinensis*  
APOCYNACEAE



21 *Tabernaemontana catharinensis*  
APOCYNACEAE



22 *Tabernaemontana catharinensis*  
APOCYNACEAE



23 *Tabernaemontana catharinensis*  
APOCYNACEAE



24 *Caladium bicolor*  
ARACEAE



25 *Taccarum ulei*  
ARACEAE



26 *Acrocomia aculeata*  
ARECACEAE



27 *Acrocomia aculeata*  
ARECACEAE



28 *Acrocomia aculeata*  
ARECACEAE



29 *Attalea speciosa*  
ARECACEAE



30 *Ageratum conyzoides*  
ASTERACEAE

# Plants of Ubajara National Park, Ceará-Brazil

## Plantas do Parque Nacional de Ubajara, Ceará-Brasil

Maria Iracema B. **Loiola**<sup>1,4</sup>, Rayane de T.M. **Ribeiro**<sup>2</sup>, Bruno S. de **Menezes**<sup>1</sup>, Ellen C.D. de **Carvalho**<sup>1</sup>, Bruno C. de **Souza**<sup>1</sup>, Raimundo Luciano S. **Neto**<sup>3</sup>, Luiz W. **Lima-Verde**<sup>4</sup>, Andréa P. **Silveira**<sup>5</sup>, Marcelo O.T. de **Menezes**<sup>6</sup>, Rubens T. de **Queiroz**<sup>7</sup> & Francisca Soares de **Araújo**<sup>1</sup>

<sup>1</sup>UFC, <sup>2</sup>UFRPE, <sup>3</sup>UFPE, <sup>4</sup>Herbário EAC-UFC, <sup>5</sup>UECE, <sup>6</sup>IFCE, <sup>7</sup>UFPB

Fotos/Photos by: M.I.B. Loiola. Produção/Produced by: R.T. M. Ribeiro, Cassie Kelsey & Juliana Philipp

© M.I.B. Loiola [loliola@ufc.br/lasevufc@gmail.com]. Apoio/Support from ICMBio, CNPq, FUNCAP and CAPES.

[fieldguides.fieldmuseum.org]

[1192] versão/version 1 9/2019



31 *Conocliniopsis prasiifolia*  
ASTERACEAE



32 *Sphagneticola trilobata*  
ASTERACEAE



33 *Handroanthus impetiginosus*  
BIGNONIACEAE



34 *Cochlospermum vitifolium*  
BIXACEAE



35 *Cochlospermum vitifolium*  
BIXACEAE



36 *Cochlospermum vitifolium*  
BIXACEAE



37 *Cordia superba*  
BORAGINACEAE



38 *Cordia trichotoma*  
BORAGINACEAE



39 *Cordia trichotoma*  
BORAGINACEAE



40 *Euploca procumbens*  
BORAGINACEAE



41 *Combretum duarceanum*  
COMBRETACEAE  
F. Fernandes



42 *Combretum duarceanum*  
COMBRETACEAE



43 *Combretum glaucocarpum*  
COMBRETACEAE  
F. Fernandes



44 *Combretum glaucocarpum*  
COMBRETACEAE  
F. Fernandes



45 *Combretum lanceolatum*  
COMBRETACEAE



46 *Combretum lanceolatum*  
COMBRETACEAE



47 *Combretum mellifluum*  
COMBRETACEAE  
F. Fernandes



48 *Combretum mellifluum*  
COMBRETACEAE  
F. Fernandes



49 *Distimake macrocalyx*  
CONVOLVULACEAE



50 *Distimake macrocalyx*  
CONVOLVULACEAE

# Plants of Ubajara National Park, Ceará-Brazil

## Plantas do Parque Nacional de Ubajara, Ceará-Brasil

4

Maria Iracema B. **Loiola**<sup>1,4</sup>, Rayane de T.M. **Ribeiro**<sup>2</sup>, Bruno S. de **Menezes**<sup>1</sup>, Ellen C.D. de **Carvalho**<sup>1</sup>, Bruno C. de **Souza**<sup>1</sup>, Raimundo Luciano S. **Neto**<sup>3</sup>, Luiz W. **Lima-Verde**<sup>4</sup>, Andréa P. **Silveira**<sup>5</sup>, Marcelo O.T. de **Menezes**<sup>6</sup>, Rubens T. de **Queiroz**<sup>7</sup> & Francisca Soares de **Araújo**<sup>1</sup>

<sup>1</sup>UFC, <sup>2</sup>UFRPE, <sup>3</sup>UFPE, <sup>4</sup>Herbário EAC-UFC, <sup>5</sup>UECE, <sup>6</sup>IFCE, <sup>7</sup>UFPB

Fotos/Photos by: M.I.B. Loiola. Produção/Produced by: R.T. M. Ribeiro, Cassie Kelsey & Juliana Philipp

© M.I.B. Loiola [liloila@ufc.br/lasevufc@gmail.com]. Apoio/Support from ICMBio, CNPq, FUNCAP and CAPES.

[fieldguides.fieldmuseum.org]

[1192]

versão/version 1

9/2019



51 *Distimake macrocalyx*  
CONVOLVULACEAE



52 *Ipomoea brasiliana*  
CONVOLVULACEAE  
A.M. Marinho



53 *Ipomoea brasiliana*  
CONVOLVULACEAE  
A.M. Marinho



54 *Ipomoea marcellia*  
CONVOLVULACEAE  
A.M. Marinho



55 *Psiguria ternata*  
CUCURBITACEAE



56 *Erythroxylum deciduum*  
ERYTHROXYLACEAE



57 *Erythroxylum deciduum*  
ERYTHROXYLACEAE



58 *Erythroxylum deciduum*  
ERYTHROXYLACEAE



59 *Erythroxylum mucronatum*  
ERYTHROXYLACEAE



60 *Erythroxylum mucronatum*  
ERYTHROXYLACEAE



61 *Caperonia palustris*  
EUPHORBIACEAE



62 *Dalechampia pernambucensis*  
EUPHORBIACEAE



63 *Dalechampia pernambucensis*  
EUPHORBIACEAE



64 *Euphorbia insulana*  
EUPHORBIACEAE



65 *Tragia cearensis*  
EUPHORBIACEAE



66 *Albizia polycephala*  
FABACEAE



67 *Anadenanthera colubrina*  
FABACEAE



68 *Ancistrotropis peduncularis*  
FABACEAE



69 *Apuleia leiocarpa*  
FABACEAE



70 *Bauhinia pulchella*  
FABACEAE

# Plants of Ubajara National Park, Ceará-Brazil

## Plantas do Parque Nacional de Ubajara, Ceará-Brasil

5

Maria Iracema B. **Loiola**<sup>1,4</sup>, Rayane de T.M. **Ribeiro**<sup>2</sup>, Bruno S. de **Menezes**<sup>1</sup>, Ellen C.D. de **Carvalho**<sup>1</sup>, Bruno C. de **Souza**<sup>1</sup>, Raimundo Luciano S. **Neto**<sup>3</sup>, Luiz W. **Lima-Verde**<sup>4</sup>, Andréa P. **Silveira**<sup>5</sup>, Marcelo O.T. de **Menezes**<sup>6</sup>, Rubens T. de **Queiroz**<sup>7</sup> & Francisca Soares de **Araújo**<sup>1</sup>

<sup>1</sup>UFC, <sup>2</sup>UFRPE, <sup>3</sup>UFPE, <sup>4</sup>Herbário EAC-UFC, <sup>5</sup>UECE, <sup>6</sup>IFCE, <sup>7</sup>UFPB

Fotos/Photos by: M.I.B. Loiola. Produção/Produced by: R.T. M. Ribeiro, Cassie Kelsey & Juliana Philipp

© M.I.B. Loiola [liloila@ufc.br/lasevufc@gmail.com]. Apoio/Support from ICMBio, CNPq, FUNCAP and CAPES.

[fieldguides.fieldmuseum.org]

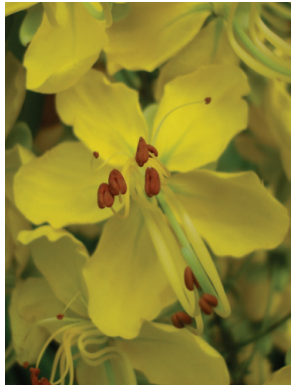
[1192]

versão/version 1

9/2019



71 *Cassia ferruginea*  
FABACEAE



72 *Cassia ferruginea*  
FABACEAE



73 *Centrosema sagittatum*  
FABACEAE



74 *Centrosema sagittatum*  
FABACEAE



75 *Chamaecrista duckeana*  
FABACEAE



76 *Dalbergia cearensis*  
FABACEAE



77 *Machaerium hirtum*  
FABACEAE



78 *Mimosa caesalpinifolia*  
FABACEAE



79 *Mimosa hirsutissima*  
FABACEAE



80 *Mimosa paraibana*  
FABACEAE



81 *Periandra coccinea*  
FABACEAE



82 *Periandra coccinea*  
FABACEAE



83 *Rhynchosia phaseoloides*  
FABACEAE



84 *Senna macranthera*  
FABACEAE



85 *Senna rizzinii*  
FABACEAE



86 *Senna trachypus*  
FABACEAE



87 *Sphaerorrhiza sarmentiana*  
GESNERIACEAE



88 *Heliconia psittacorum*  
HELICONIACEAE



89 *Amasonia campestris*  
LAMIACEAE



90 *Amasonia campestris*  
LAMIACEAE

# Plants of Ubajara National Park, Ceará-Brazil

## Plantas do Parque Nacional de Ubajara, Ceará-Brasil

6

Maria Iracema B. **Loiola**<sup>1,4</sup>, Rayane de T.M. **Ribeiro**<sup>2</sup>, Bruno S. de **Menezes**<sup>1</sup>, Ellen C.D. de **Carvalho**<sup>1</sup>, Bruno C. de **Souza**<sup>1</sup>, Raimundo Luciano S. **Neto**<sup>3</sup>, Luiz W. **Lima-Verde**<sup>4</sup>, Andréa P. **Silveira**<sup>5</sup>, Marcelo O.T. de **Menezes**<sup>6</sup>, Rubens T. de **Queiroz**<sup>7</sup> & Francisca Soares de **Araújo**<sup>1</sup>

<sup>1</sup>UFC, <sup>2</sup>UFRPE, <sup>3</sup>UFPE, <sup>4</sup>Herbário EAC-UFC, <sup>5</sup>UECE, <sup>6</sup>IFCE, <sup>7</sup>UFPB

Fotos/Photos by: M.I.B. Loiola. Produção/Produced by: R.T. M. Ribeiro, Cassie Kelsey & Juliana Philipp

© M.I.B. Loiola [liloiola@ufc.br/lasevufc@gmail.com]. Apoio/Support from ICMBio, CNPq, FUNCAP and CAPES.

[fieldguides.fieldmuseum.org]

[1192] versão/version 1 9/2019



91 *Bunchosia pernambucana*  
MALPIGHIACEAE



92 *Byrsonima gardneriana*  
MALPIGHIACEAE



93 *Apeiba tibourbou*  
MALVACEAE



94 *Helicteres heptandra*  
MALVACEAE



95 *Urena lobata*  
MALVACEAE



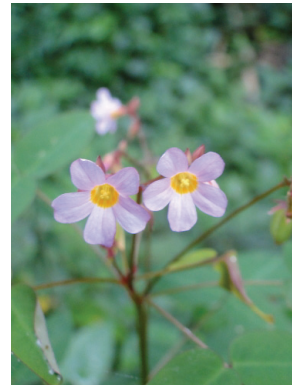
96 *Clidemia hirta*  
MELASTOMATACEAE



97 *Pleroma heteromalla*  
MELASTOMATACEAE



98 *Oeceoclades maculata*  
ORCHIDACEAE



99 *Oxalis cratensis*  
OXALIDACEAE



100 *Oxalis cratensis*  
OXALIDACEAE



101 *Oxalis hedysarifolia*  
OXALIDACEAE



102 *Oxalis hedysarifolia*  
OXALIDACEAE



103 *Passiflora misera*  
PASSIFLORACEAE



104 *Passiflora suberosa*  
PASSIFLORACEAE



105 *Passiflora tricuspis*  
PASSIFLORACEAE



106 *Passiflora tricuspis*  
PASSIFLORACEAE



107 *Phyllanthus tenellus*  
PHYLLANTHACEAE



108 *Piper* sp.  
PIPERACEAE



109 *Coccoloba mollis*  
POLYGONACEAE



110 *Bertiera guianensis*  
RUBIACEAE

# Plants of Ubajara National Park, Ceará-Brazil

## Plantas do Parque Nacional de Ubajara, Ceará-Brasil

7

Maria Iracema B. **Loiola**<sup>1,4</sup>, Rayane de T.M. **Ribeiro**<sup>2</sup>, Bruno S. de **Menezes**<sup>1</sup>, Ellen C.D. de **Carvalho**<sup>1</sup>, Bruno C. de **Souza**<sup>1</sup>, Raimundo Luciano S. **Neto**<sup>3</sup>, Luiz W. **Lima-Verde**<sup>4</sup>, Andréa P. **Silveira**<sup>5</sup>, Marcelo O.T. de **Menezes**<sup>6</sup>, Rubens T. de **Queiroz**<sup>7</sup> & Francisca Soares de **Araújo**<sup>1</sup>

<sup>1</sup>UFC, <sup>2</sup>UFRPE, <sup>3</sup>UFPE, <sup>4</sup>Herbário EAC-UFC, <sup>5</sup>UECE, <sup>6</sup>IFCE, <sup>7</sup>UFPB

Fotos/Photos by: M.I.B. Loiola. Produção/Produced by: R.T. M. Ribeiro, Cassie Kelsey & Juliana Philipp

© M.I.B. Loiola [loiola@ufc.br/lasevufc@gmail.com]. Apoio/Support from ICMBio, CNPq, FUNCAP and CAPES.

[fieldguides.fieldmuseum.org]

[1192] versão/version 1 9/2019



111 *Coffea arabica*  
RUBIACEAE



112 *Coutarea hexandra*  
RUBIACEAE



113 *Palicourea marcgravii*  
RUBIACEAE



114 *Palicourea marcgravii*  
RUBIACEAE



115 *Palicourea marcgravii*  
RUBIACEAE



116 *Psychotria bahiensis*  
RUBIACEAE



117 *Psychotria colorata*  
RUBIACEAE



118 *Sabicea cinerea*  
RUBIACEAE



119 *Sabicea cinerea*  
RUBIACEAE



120 *Casearia grandiflora*  
SALICACEAE



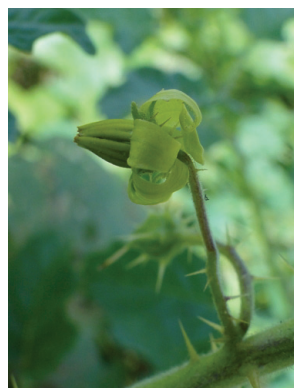
121 *Casearia grandiflora*  
SALICACEAE



122 *Matayba guianensis*  
SAPINDACEAE



123 *Solanum agrarium*  
SOLANACEAE



124 *Solanum agrarium*  
SOLANACEAE



125 *Solanum asperum*  
SOLANACEAE



126 *Solanum asperum*  
SOLANACEAE



127 *Solanum stipulaceum*  
SOLANACEAE



128 *Pombalia communis*  
VIOLACEAE



129 *Cissus gongyloides*  
VITACEAE



130 *Cissus gongyloides*  
VITACEAE

# Plants of Ubajara National Park, Ceará-Brazil

## Plantas do Parque Nacional de Ubajara, Ceará-Brasil

8

Maria Iracema B. **Loiola**<sup>1,4</sup>, Rayane de T.M. **Ribeiro**<sup>2</sup>, Bruno S. de **Menezes**<sup>1</sup>, Ellen C.D. de **Carvalho**<sup>1</sup>, Bruno C. de **Souza**<sup>1</sup>, Raimundo Luciano S. **Neto**<sup>3</sup>, Luiz W. **Lima-Verde**<sup>4</sup>, Andréa P. **Silveira**<sup>5</sup>, Marcelo O.T. de **Menezes**<sup>6</sup>, Rubens T. de **Queiroz**<sup>7</sup> & Francisca Soares de **Araújo**<sup>1</sup>

<sup>1</sup>UFC, <sup>2</sup>UFRPE, <sup>3</sup>UFPE, <sup>4</sup>Herbário EAC-UFC, <sup>5</sup>UECE, <sup>6</sup>IFCE, <sup>7</sup>UFPB

Fotos/Photos by: M.I.B. Loiola. Produção/Produced by: R.T. M. Ribeiro, Cassie Kelsey & Juliana Philipp

© M.I.B. Loiola [loliola@ufc.br/lasevufc@gmail.com]. Apoio/Support from ICMBio, CNPq, FUNCAP and CAPES.

[fieldguides.fieldmuseum.org]

[1192]

versão/version 1

9/2019



Vista da estação do teleférico/View of cable car station



H.T.L. Cordeiro



Portão Planalto/Planalto Gate

