



Foods eaten by the Endangered Geoffroy's spider monkey (*Ateles geoffroyi*)

Ruthmery Pillco Huarcaya^{1*}, Maria J.A. Creighton^{2*}, Marvín López Morales¹, Danielle Connor³, Eleanor Flatt¹, & Andrew Whitworth¹

¹Osa Conservation, Washington, D.C., US, ²Department of Biology, McGill University, Montreal, QC, Canada, ³Centre for Ecology & Conservation,

School of Bio sciences, University of Exeter, Penryn Campus, Cornwall, UK. *These authors contributed equally to this work.

Photos by the authors, volunteers and visitors of Osa Conservation. Produced by: Maria Creighton with support from Margot Marsh Biodiversity Foundation and Alicia Diaz, Field Museum.

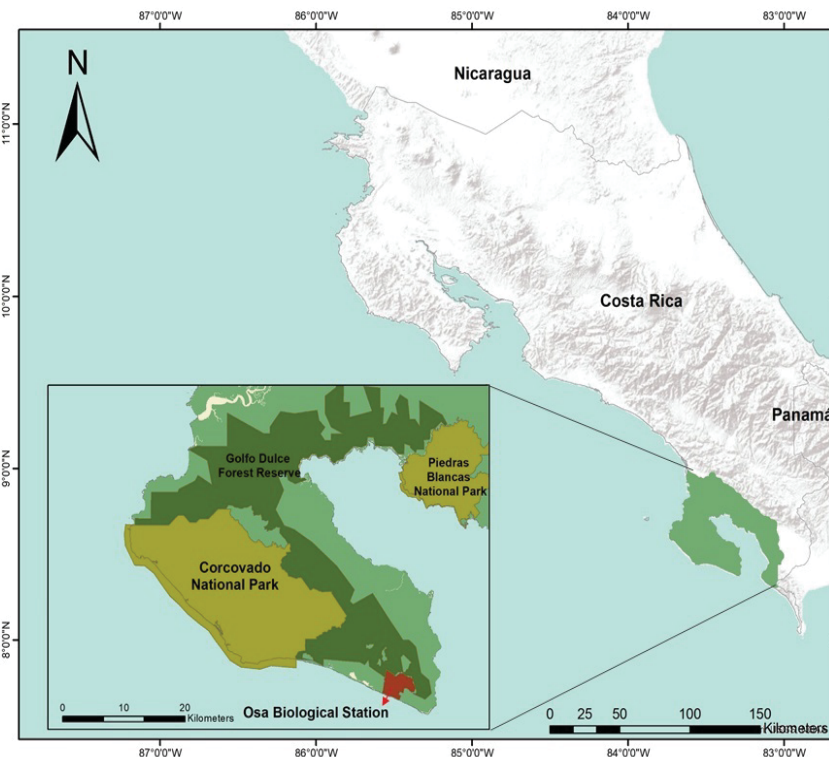
© Osa Conservation [ruthp@osaconservation.org]

© Field Museum (2020) CC BY-NC 4.0. Licensed works are free to use/share/remix with attribution, but does not permit commercial use of the original work.

[fieldguides.fieldmuseum.org] [1245] version 1 5/2020



Adult male Geoffroy's spider monkey (*Ateles geoffroyi*) feeding on *Byrsonima crassifolia*, Photo by Andrew Whitworth



The Osa Peninsula of southwest Costa Rica is home to the largest remaining tract of Pacific lowland wet forest in Mesoamerica. It is comprised of old and secondary growth seasonal tropical forest, and many other habitat types.

The Geoffroy's spider monkey is an endangered primate and an important disperser of large-seeded hardwood trees. One way in which spider monkeys influence tropical ecosystem structure and function is through the creation of visible terrestrial latrines beneath their "sleeping sites"—trees in which they frequently return to sleep.

This guide includes 79 of the 111 different plant species consumed by Geoffroy's spider monkeys as identified in a study recently carried out in the Osa Peninsula. The study considered sapling, and seed inventories from latrines and direct observations during in-situ follows. For a detailed description: Whitworth, A. Whittaker, L. Huarcaya, R.P. Flatt, E. Morales, M.L. Connor, D. Priego, M.G. Forsyth, A. Beirne, C. (2019) Spider Monkeys Rule the Roost: Ateline Sleeping Sites Influence Rainforest Heterogeneity. *Animals*, 9, 1052.

Foods eaten by the Endangered Geoffroy's spider monkey (*Ateles geoffroyi*)

Ruthmery Pillco Huarcaya^{1*}, Maria J.A. Creighton^{2*}, Marvin López Morales¹, Danielle Connor³, Eleanor Flatt¹, & Andrew Whitworth¹

¹Osa Conservation, Washington, D.C., US, ²Department of Biology, McGill University, Montreal, QC, Canada, ³Centre for Ecology & Conservation,

School of Bio sciences, University of Exeter, Penryn Campus, Cornwall, UK. *These authors contributed equally to this work.

Photos by the authors, volunteers and visitors of Osa Conservation. Produced by: Maria Creighton with support from Margot Marsh Biodiversity Foundation and Alicia Diaz, Field Museum.

© Osa Conservation [ruthp@osaconservation.org]

© Field Museum (2020) CC BY-NC 4.0. Licensed works are free to use/share/ remix with attribution, but does not permit commercial use of the original work.

[fieldguides.fieldmuseum.org] [1245] version 1 5/2020



1 *Mangifera indica*
ANACARDIACEAE



2 *Spondias mombin*
ANACARDIACEAE



3 *Spondias purpurea*
ANACARDIACEAE



4 *Tapirira guianensis*
ANACARDIACEAE



5 *Tapirira guianensis*
ANACARDIACEAE



6 *Duguetia confusa*
ANNONACEAE



7 *Guatteria amplifolia*
ANNONACEAE



8 *Guatteria pudica*
ANNONACEAE



9 *Klarobelia stipitata*
ANNONACEAE



10 *Xylopia macrantha*
ANNONACEAE



11 *Xylopia macrantha*
ANNONACEAE



12 *Monstera adansonii*
ARACEAE



13 *Astrocaryum standleyanum*
ARECACEAE



14 *Attalea butyracea*
ARECACEAE



15 *Socratea exorrhiza*
ARECACEAE



16 *Socratea exorrhiza*
ARECACEAE



17 *Protium glabrum*
BURSERACEAE



18 *Protium picramnioides*
BURSERACEAE



19 *Protium picramnioides*
BURSERACEAE



20 *Caryocar costaricense*
CARYOCARACEAE

Ruthmery Pillco Huarcaya^{1*}, Maria J.A. Creighton^{2*}, Marvín López Morales¹, Danielle Connor³, Eleanor Flatt¹, & Andrew Whitworth¹
¹Osa Conservation, Washington, D.C., US, ²Department of Biology, McGill University, Montreal, QC, Canada, ³Centre for Ecology & Conservation,
 School of Bio sciences, University of Exeter, Penryn Campus, Cornwall, UK. *These authors contributed equally to this work.

Photos by the authors, volunteers and visitors of Osa Conservation. Produced by: Maria Creighton with support from Margot Marsh Biodiversity Foundation and Alicia Diaz, Field Museum.
 © Osa Conservation [ruthp@osaconservation.org]

© Field Museum (2020) CC BY-NC 4.0. Licensed works are free to use/share/
 remix with attribution, but does not permit commercial use of the original work.

[fieldguides.fieldmuseum.org] [1245] version 1 5/2020



21 *Caryocar costaricense*
 CARYOCARACEAE



22 *Cheilochlinium cognatum*
 CELASTRACEAE



23 *Maranthes panamensis*
 CHRYSOBALANACEAE



24 *Garcinia madruno*
 CLUSIACEAE



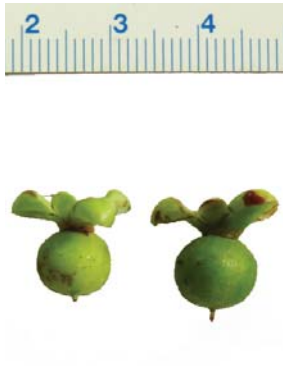
25 *Garcinia madruno*
 CLUSIACEAE



26 *Symphonia globulifera*
 CLUSIACEAE



27 *Symphonia globulifera*
 CLUSIACEAE



28 *Doliocarpus multiflorus*
 DILLENIACEAE



29 *Sloanea picapica*
 ELAEOCARPACEAE



30 *Sloanea picapica*
 ELAEOCARPACEAE



31 *Dialium guianense*
 FABACEAE



32 *Dialium guianense*
 FABACEAE



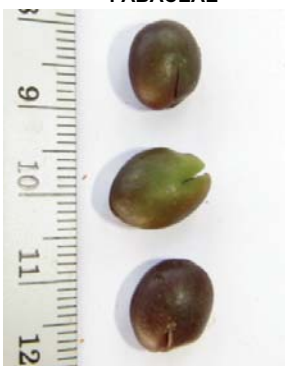
33 *Dussia discolor*
 FABACEAE



34 *Dussia discolor*
 FABACEAE



35 *Dussia discolor*
 FABACEAE



36 *Inga marginata*
 FABACEAE



37 *Inga multijuga*
 FABACEAE



38 *Inga multijuga*
 FABACEAE



39 *Vantanea barbourii*
 HUMIRIACEAE



40 *Vantanea barbourii*
 HUMIRIACEAE

Foods eaten by the Endangered Geoffroy's spider monkey (*Ateles geoffroyi*)

Ruthmery Pillco Huarcaya^{1*}, Maria J.A. Creighton^{2*}, Marvin López Morales¹, Danielle Connor³, Eleanor Flatt¹, & Andrew Whitworth¹

¹Osa Conservation, Washington, D.C., US, ²Department of Biology, McGill University, Montreal, QC, Canada, ³Centre for Ecology & Conservation,

School of Bio sciences, University of Exeter, Penryn Campus, Cornwall, UK. *These authors contributed equally to this work.

Photos by the authors, volunteers and visitors of Osa Conservation. Produced by: Maria Creighton with support from Margot Marsh Biodiversity Foundation and Alicia Diaz, Field Museum. © Osa Conservation [ruthp@osaconservation.org]

© Field Museum (2020) CC BY-NC 4.0. Licensed works are free to use/share/remix with attribution, but does not permit commercial use of the original work.

[fieldguides.fieldmuseum.org] [1245] version 1 5/2020



41 *Beilschmiedia sp.1*
LAURACEAE



42 *Licaria misantlae*
LAURACEAE



43 *Damburneya umbrosa*
LAURACEAE



44 *Ocotea pullifolia*
LAURACEAE



45 *Ocotea pullifolia*
LAURACEAE



46 *Byrsonima crassifolia*
MALPIGHIACEAE



47 *Guazuma ulmifolia*
MALVACEAE



48 *Guazuma ulmifolia*
MALVACEAE



49 *Luehea seemannii*
MALVACEAE



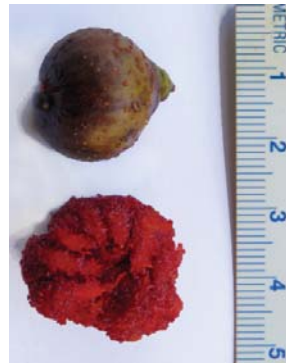
50 *Ochroma pyramidale*
MALVACEAE



51 *Ochroma pyramidale*
MALVACEAE



52 *Quararibea platyphylla*
MALVACEAE



53 *Marcgravia schippii*
MARCGRAVIACEAE



54 *Miconia argentea*
MELASTOMATACEAE



55 *Guarea chiricana*
MELIACEAE



56 *Guarea pterorhachis*
MELIACEAE



57 *Guarea tonduzii*
MELIACEAE



58 *Guarea tonduzii*
MELIACEAE



59 *Trichilia sp.1*
MELIACEAE



60 *Trichilia tuberculata*
MELIACEAE

Foods eaten by the Endangered Geoffroy's spider monkey (*Ateles geoffroyi*)

Ruthmery Pillco Huarcaya^{1*}, Maria J.A. Creighton^{2*}, Marvin López Morales¹, Danielle Connor³, Eleanor Flatt¹, & Andrew Whitworth¹

¹Osa Conservation, Washington, D.C., US, ²Department of Biology, McGill University, Montreal, QC, Canada, ³Centre for Ecology & Conservation,

School of Bio sciences, University of Exeter, Penryn Campus, Cornwall, UK. *These authors contributed equally to this work.

Photos by the authors, volunteers and visitors of Osa Conservation. Produced by: Maria Creighton with support from Margot Marsh Biodiversity Foundation and Alicia Diaz, Field Museum. © Osa Conservation [ruthp@osaconservation.org]

© Field Museum (2020) CC BY-NC 4.0. Licensed works are free to use/share/remix with attribution, but does not permit commercial use of the original work.

[fieldguides.fieldmuseum.org] [1245] version 1 5/2020



61 *Abuta panamensis*
MENISPERMACEAE



62 *Brosimum alicastrum*
MORACEAE



63 *Brosimum guianense*
MORACEAE



64 *Brosimum lactescens*
MORACEAE



65 *Brosimum utile*
MORACEAE



66 *Brosimum utile*
MORACEAE



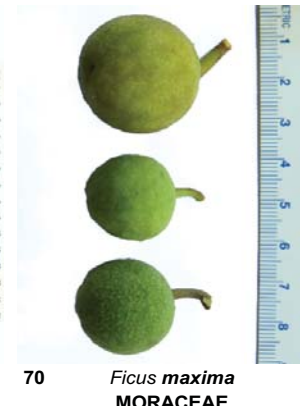
67 *Castilla tunu*
MORACEAE



68 *Ficus insipida*
MORACEAE



69 *Ficus insipida*
MORACEAE



70 *Ficus maxima*
MORACEAE



71 *Ficus osensis*
MORACEAE



72 *Ficus osensis*
MORACEAE



73 *Ficus sp. 1*
MORACEAE



74 *Maclura tinctoria*
MORACEAE



75 *Maclura tinctoria*
MORACEAE



76 *Perebea hispidula*
MORACEAE



77 *Perebea hispidula*
MORACEAE



78 *Compsonera excelsa*
MYRISTICACEAE



79 *Compsonera excelsa*
MYRISTICACEAE



80 *Virola allenii*
MYRISTICACEAE

Foods eaten by the Endangered Geoffroy's spider monkey (*Ateles geoffroyi*)

Ruthmery Pillco Huarcaya^{1*}, Maria J.A. Creighton^{2*}, Marvin López Morales¹, Danielle Connor³, Eleanor Flatt¹, & Andrew Whitworth¹

¹Osa Conservation, Washington, D.C., US, ²Department of Biology, McGill University, Montreal, QC, Canada, ³Centre for Ecology & Conservation,

School of Bio sciences, University of Exeter, Penryn Campus, Cornwall, UK. *These authors contributed equally to this work.

Photos by the authors, volunteers and visitors of Osa Conservation. Produced by: Maria Creighton with support from Margot Marsh Biodiversity Foundation and Alicia Diaz, Field Museum.

© Osa Conservation [ruthp@osaconservation.org]

© Field Museum (2020) CC BY-NC 4.0. Licensed works are free to use/share/remix with attribution, but does not permit commercial use of the original work.

[fieldguides.fieldmuseum.org] [1245] version 1 5/2020



81 *Virola allenii*
MYRISTICACEAE



82 *Virola chrysocarpa*
MYRISTICACEAE



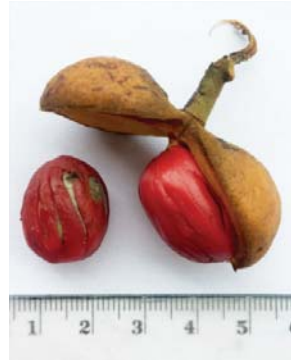
83 *Virola chrysocarpa*
MYRISTICACEAE



84 *Virola sebifera*
MYRISTICACEAE



85 *Virola sebifera*
MYRISTICACEAE



86 *Virola laevigata*
MYRISTICACEAE



87 *Eugenia hammelii*
MYRTACEAE



88 *Psidium guajava*
MYRTACEAE



89 *Heisteria concinna*
OLACACEAE



90 *Heisteria concinna*
OLACACEAE



91 *Minquartia guianensis*
OLACACEAE



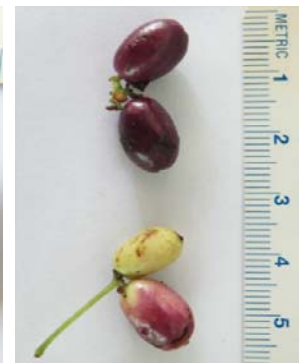
92 *Erblichia odorata*
PASSIFLORACEAE



93 *Erblichia odorata*
PASSIFLORACEAE



94 *Chione venosa*
RUBIACEAE



95 *Chomelia microloba*
RUBIACEAE



96 *Laetia povedae*
SALICACEAE



97 *Laetia povedae*
SALICACEAE



98 *Cupania rufescens*
SAPINDACEAE



99 *Paullinia sp. 1*
SAPINDACEAE



100 *Paullinia sp. 1*
SAPINDACEAE

Foods eaten by the Endangered Geoffroy's spider monkey (*Ateles geoffroyi*)

Ruthmery Pillco Huarcaya^{1*}, Maria J.A. Creighton^{2*}, Marvin López Morales¹, Danielle Connor³, Eleanor Flatt¹, & Andrew Whitworth¹

¹Osa Conservation, Washington, D.C., US, ²Department of Biology, McGill University, Montreal, QC, Canada, ³Centre for Ecology & Conservation,

School of Bio sciences, University of Exeter, Penryn Campus, Cornwall, UK. *These authors contributed equally to this work.

Photos by the authors, volunteers and visitors of Osa Conservation. Produced by: Maria Creighton with support from Margot Marsh Biodiversity Foundation and Alicia Diaz, Field Museum. © Osa Conservation [ruthp@osaconservation.org]

© Field Museum (2020) CC BY-NC 4.0. Licensed works are free to use/share/ remix with attribution, but does not permit commercial use of the original work.

[fieldguides.fieldmuseum.org] [1245] version 1 5/2020



101 *Chrysophyllum cainito*
SAPOTACEAE



102 *Chrysophyllum cainito*
SAPOTACEAE



103 *Pouteria spicata*
SAPOTACEAE



104 *Pouteria spicata*
SAPOTACEAE



105 *Pouteria sp.1*
SAPOTACEAE



106 *Pouteria sp. 1*
SAPOTACEAE



107 *Pouteria sp2.*
SAPOTACEAE



108 *Pouteria sp. 2*
SAPOTACEAE



109 *Pouteria sp. 3*
SAPOTACEAE



110 *Pouteria sp. 3*
SAPOTACEAE



111 *Pouteria torta*
SAPOTACEAE



112 *Simarouba amara*
SIMAROUBACEAE



113 *Simarouba amara*
SIMAROUBACEAE



114 *Cecropia peltata*
URTICACEAE



115 *Pourouma bicolor*
URTICACEAE