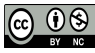


# Plants of Rio Branco Park

Valéria da Silva Sampaio & Bruno Edson-Chaves

Universidade Estadual do Ceará – UECE

Photos by V.S. Sampaio. Produced by V.S. Sampaio [valeria.sampaio@uece.br] with the assistance of Juliana Philipp, Field Museum.

 © Field Museum (2021) CC BY-NC 4.0. Licensed works are free to use/share/remix with attribution, but commercial use of the original work is not permitted.

[fieldguides.fieldmuseum.org] [1358] version 1 10/2021



Main entrance of the Rio Branco Urban Park

Starting in 1970, numerous urban parks have been established in the city of Fortaleza, capital of the state of Ceará, Brazil, for the protection of its urban watercourses. Amongst these is the Rio Branco Urban Park, first opened in 1992 and later revitalized and opened to the public in 2008. Located in the Joaquim Távora district, the municipal park covers 75,825 m<sup>2</sup>, making it an important leisure spot for locals and tourists. The park provides an ideal space for physical activity and serves as a venue for educating the public about the importance of environmental conservation. It stands out for its natural beauty, with two natural springs, a rich flora with native and exotic species and a much sought-after arena for artistic events. Rio Branco park is protected as an Environmental preservation zone, where more than 70 plant species of ecological and biological importance have been identified, highlighting the importance of conservation efforts in this area.

For more information visit the website of the Prefeitura de Fortaleza (<https://bit.ly/3hw7OIl>).



Internal areas of the Rio Branco Urban Park

Plants of Rio Branco Park

Valéria da Silva Sampaio & Bruno Edson-Chaves

Universidade Estadual do Ceará – UECE

Photos by V.S. Sampaio. Produced by V.S. Sampaio [valeria.sampaio@uece.br] with the assistance of Juliana Philipp, Field Museum.

© Field Museum (2021) CC BY-NC 4.0. Licensed works are free to use/share/remix with attribution, but commercial use of the original work is not permitted.

[fieldguides.fieldmuseum.org]

[1358] version 1 10/2021



1 *Sanchezia oblonga*  
ACANTHACEAE



2 *Sanchezia oblonga*  
ACANTHACEAE



3 *Sanchezia oblonga*  
ACANTHACEAE



4 *Alternanthera tenella*  
AMARANTHACEAE



5 *Anacardium occidentale*  
ANACARDIACEAE



6 *Mangifera indica*  
ANACARDIACEAE



7 *Spondias mombin*  
ANACARDIACEAE



8 *Spondias mombin*  
ANACARDIACEAE



9 *Spondias purpurea*  
ANACARDIACEAE



10 *Spondias purpurea*  
ANACARDIACEAE



11 *Spondias purpurea*  
ANACARDIACEAE



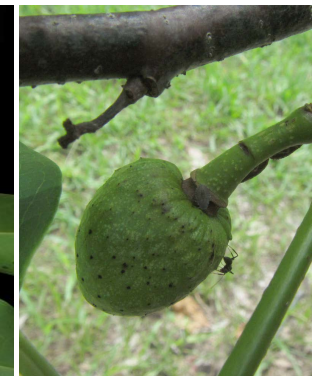
12 *Annona glabra*  
ANNONACEAE



13 *Annona glabra*  
ANNONACEAE



14 *Annona glabra*  
ANNONACEAE



15 *Annona glabra*  
ANNONACEAE



16 *Annona squamosa*  
ANNONACEAE



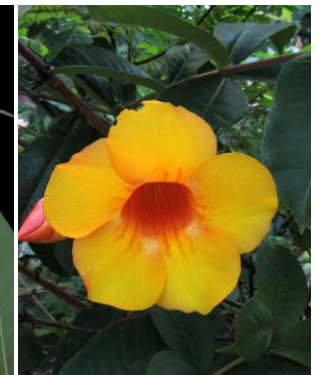
17 *Annona squamosa*  
ANNONACEAE



18 *Annona squamosa*  
ANNONACEAE



19 *Annona squamosa*  
ANNONACEAE



20 *Allamanda cathartica*  
APOCYNACEAE

Plants of Rio Branco Park

Valéria da Silva Sampaio & Bruno Edson-Chaves

Universidade Estadual do Ceará – UECE

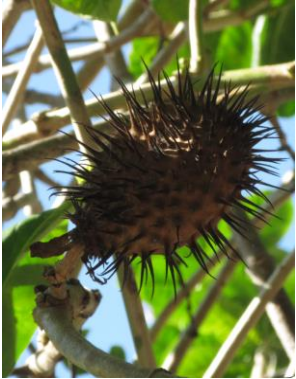
Photos by V.S. Sampaio. Produced by V.S. Sampaio [valeria.sampaio@uece.br] with the assistance of Juliana Philipp, Field Museum.



© Field Museum (2021) CC BY-NC 4.0. Licensed works are free to use/share/remix with attribution, but commercial use of the original work is not permitted.

[fieldguides.fieldmuseum.org]

[1358] version 1 10/2021



21 *Allamanda cathartica*  
APOCYNACEAE



22 *Allamanda cathartica*  
APOCYNACEAE



23 *Allamanda doniana*  
APOCYNACEAE



24 *Asclepias curassavica*  
APOCYNACEAE



25 *Asclepias curassavica*  
APOCYNACEAE



26 *Asclepias curassavica*  
APOCYNACEAE



27 *Nerium oleander*  
APOCYNACEAE



28 *Plumeria rubra*  
APOCYNACEAE



29 *Plumeria rubra*  
APOCYNACEAE



30 *Thevetia peruviana*  
APOCYNACEAE



31 *Thevetia peruviana*  
APOCYNACEAE



32 *Thevetia peruviana*  
APOCYNACEAE



33 *Philodendron acutatum*  
ARACEAE



34 *Adonidia merrillii*  
ARECACEAE



35 *Adonidia merrillii*  
ARECACEAE



36 *Adonidia merrillii*  
ARECACEAE



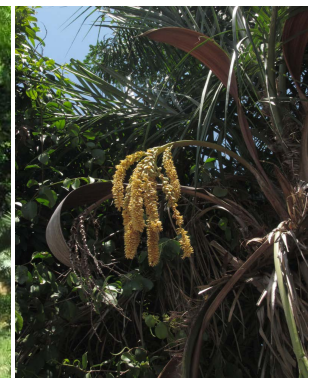
37 *Cocos nucifera*  
ARECACEAE



38 *Cocos nucifera*  
ARECACEAE



39 *Copernicia prunifera*  
ARECACEAE



40 *Syagrus cearensis*  
ARECACEAE

Plants of Rio Branco Park

Valéria da Silva Sampaio & Bruno Edson-Chaves

Universidade Estadual do Ceará – UECE

Photos by V.S. Sampaio. Produced by V.S. Sampaio [valeria.sampaio@uece.br] with the assistance of Juliana Philipp, Field Museum.

© Field Museum (2021) CC BY-NC 4.0. Licensed works are free to use/share/remix with attribution, but commercial use of the original work is not permitted.

[fieldguides.fieldmuseum.org]

[1358] version 1 10/2021



41 *Syagrus cearensis*  
ARECACEAE



42 *Syagrus cearensis*  
ARECACEAE



43 *Syagrus cearensis*  
ARECACEAE



44 *Agave angustifolia*  
ASPARAGACEAE



45 *Dracaena reflexa* var. *reflexa*  
ASPARAGACEAE



46 *Dracaena reflexa* var. *variegata*  
ASPARAGACEAE



47 *Emilia sonchifolia*  
ASTERACEAE



48 *Tridax procumbens*  
ASTERACEAE



49 *Cordia oncocalyx*  
BORAGINACEAE



50 *Cordia oncocalyx*  
BORAGINACEAE



51 *Cordia oncocalyx*  
BORAGINACEAE



52 *Pereskia bleo*  
CACTACEAE



53 *Pereskia bleo*  
CACTACEAE



54 *Pereskia bleo*  
CACTACEAE



55 *Pereskia bleo*  
CACTACEAE



56 *Canna glauca*  
CANNACEAE



57 *Canna glauca*  
CANNACEAE



58 *Canna glauca*  
CANNACEAE



59 *Tarenaya aculeata*  
CLEOMACEAE



60 *Tarenaya aculeata*  
CLEOMACEAE

Plants of Rio Branco Park

Valéria da Silva Sampaio & Bruno Edson-Chaves

Universidade Estadual do Ceará – UECE

Photos by V.S. Sampaio. Produced by V.S. Sampaio [valeria.sampaio@uece.br] with the assistance of Juliana Philipp, Field Museum.

© Field Museum (2021) CC BY-NC 4.0. Licensed works are free to use/share/remix with attribution, but commercial use of the original work is not permitted.

[fieldguides.fieldmuseum.org] [1358] version 1 10/2021



61 *Combretum indicum*  
COMBRETACEAE



62 *Terminalia catappa*  
COMBRETACEAE



63 *Terminalia catappa*  
COMBRETACEAE



64 *Terminalia catappa*  
COMBRETACEAE



65 *Tradescantia pallida*  
COMMELINACEAE



66 *Ipomoea alba*  
CONVOLVULACEAE



67 *Ipomoea alba*  
CONVOLVULACEAE



68 *Ipomoea carnea*  
CONVOLVULACEAE



69 *Ipomoea carnea*  
CONVOLVULACEAE



70 *Ipomoea carnea*  
CONVOLVULACEAE



71 *Ipomoea carnea*  
CONVOLVULACEAE



72 *Costus spiralis*  
COSTACEAE



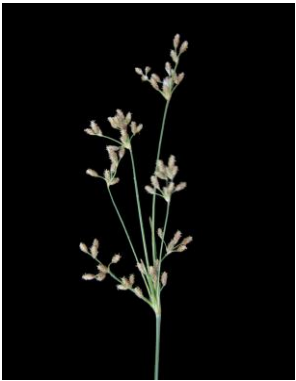
73 *Costus spiralis*  
COSTACEAE



74 *Kalanchoe* sp.  
CRASSULACEAE



75 *Cyperus ligularis*  
CYPERACEAE



76 *Fimbristylis dichotoma*  
CYPERACEAE



77 *Euphorbia hirta*  
EUPHORBIACEAE



78 *Bauhinia variegata*  
FABACEAE



79 *Bauhinia variegata*  
FABACEAE



80 *Bauhinia variegata*  
FABACEAE

Plants of Rio Branco Park

Valéria da Silva Sampaio & Bruno Edson-Chaves

Universidade Estadual do Ceará – UECE

Photos by V.S. Sampaio. Produced by V.S. Sampaio [valeria.sampaio@uece.br] with the assistance of Juliana Philipp, Field Museum.

© Field Museum (2021) CC BY-NC 4.0. Licensed works are free to use/share/remix with attribution, but commercial use of the original work is not permitted.

[fieldguides.fieldmuseum.org] [1358] version 1 10/2021



81 *Caesalpinia pulcherrima*  
FABACEAE



82 *Caesalpinia pulcherrima*  
FABACEAE



83 *Cassia fistula*  
FABACEAE



84 *Cassia fistula*  
FABACEAE



85 *Cassia fistula*  
FABACEAE



86 *Leucaena leucocephala*  
FABACEAE



87 *Leucaena leucocephala*  
FABACEAE



88 *Leucaena leucocephala*  
FABACEAE



89 *Leucaena leucocephala*  
FABACEAE



90 *Libidibia ferrea*  
FABACEAE



91 *Libidibia ferrea*  
FABACEAE



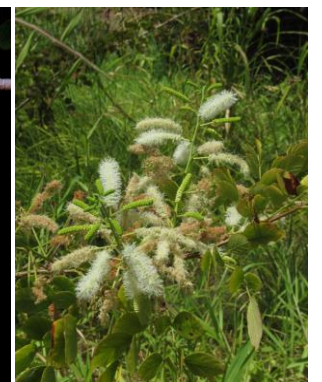
92 *Libidibia ferrea*  
FABACEAE



93 *Libidibia ferrea*  
FABACEAE



94 *Libidibia ferrea*  
FABACEAE



95 *Mimosa caesalpinifolia*  
FABACEAE



96 *Mimosa caesalpinifolia*  
FABACEAE



97 *Pithecellobium dulce*  
FABACEAE



98 *Pithecellobium dulce*  
FABACEAE



99 *Heliconia psittacorum*  
HELICONIACEAE



100 *Heliconia psittacorum*  
HELICONIACEAE

Plants of Rio Branco Park

Valéria da Silva Sampaio & Bruno Edson-Chaves

Universidade Estadual do Ceará – UECE

Photos by V.S. Sampaio. Produced by V.S. Sampaio [valeria.sampaio@uece.br] with the assistance of Juliana Philipp, Field Museum.

© Field Museum (2021) CC BY-NC 4.0. Licensed works are free to use/share/remix with attribution, but commercial use of the original work is not permitted.

[fieldguides.fieldmuseum.org] [1358] version 1 10/2021



101 *Clerodendrum speciosissimum*  
LAMIACEAE



102 *Clerodendrum speciosissimum*  
LAMIACEAE



103 *Clerodendrum speciosissimum*  
LAMIACEAE



104 *Struthanthus syringifolius*  
LORANTHACEAE



105 *Struthanthus syringifolius*  
LORANTHACEAE



106 *Ceiba speciosa*  
MALVACEAE



107 *Ceiba speciosa*  
MALVACEAE



108 *Ceiba speciosa*  
MALVACEAE



109 *Ceiba speciosa*  
MALVACEAE



110 *Pachira aquatica*  
MALVACEAE



111 *Pachira aquatica*  
MALVACEAE



112 *Pachira aquatica*  
MALVACEAE



113 *Pachira aquatica*  
MALVACEAE



114 *Pachira aquatica*  
MALVACEAE



115 *Pavonia cancellata*  
MALVACEAE



116 *Pavonia cancellata*  
MALVACEAE



117 *Sterculia striata*  
MALVACEAE



118 *Sterculia striata*  
MALVACEAE



119 *Sterculia striata*  
MALVACEAE



120 *Sterculia striata*  
MALVACEAE

Plants of Rio Branco Park

Valéria da Silva Sampaio & Bruno Edson-Chaves

Universidade Estadual do Ceará – UECE

Photos by V.S. Sampaio. Produced by V.S. Sampaio [valeria.sampaio@uece.br] with the assistance of Juliana Philipp, Field Museum.

© Field Museum (2021) CC BY-NC 4.0. Licensed works are free to use/share/remix with attribution, but commercial use of the original work is not permitted.

[fieldguides.fieldmuseum.org] [1358] version 1 10/2021



121 *Thespesia populnea*  
MALVACEAE



122 *Thespesia populnea*  
MALVACEAE



123 *Thespesia populnea*  
MALVACEAE



124 *Azadirachta indica*  
MELIACEAE



125 *Azadirachta indica*  
MELIACEAE



126 *Mollugo verticillata*  
MOLLUGINACEAE



127 *Ficus benjamina*  
MORACEAE



128 *Ficus benjamina*  
MORACEAE



129 *Ficus benjamina*  
MORACEAE



130 *Morus nigra*  
MORACEAE



131 *Morus nigra*  
MORACEAE



132 *Morus nigra*  
MORACEAE



133 *Moringa oleifera*  
MORINGACEAE



134 *Musa paradisiaca*  
MUSACEAE



135 *Musa paradisiaca*  
MUSACEAE



136 *Syzygium cumini*  
MYRTACEAE



137 *Syzygium cumini*  
MYRTACEAE



138 *Syzygium cumini*  
MYRTACEAE



139 *Syzygium cumini*  
MYRTACEAE



140 *Boerhavia diffusa*  
NYCTAGINACEAE



Plants of Rio Branco Park

Valéria da Silva Sampaio & Bruno Edson-Chaves

Universidade Estadual do Ceará – UECE

Photos by V.S. Sampaio. Produced by V.S. Sampaio [valeria.sampaio@uece.br] with the assistance of Juliana Philipp, Field Museum.

© Field Museum (2021) CC BY-NC 4.0. Licensed works are free to use/share/remix with attribution, but commercial use of the original work is not permitted.

[fieldguides.fieldmuseum.org] [1358] version 1 10/2021



141 *Boerhavia diffusa*  
NYCTAGINACEAE



142 *Boerhavia diffusa*  
NYCTAGINACEAE



143 *Ludwigia leptocarpa*  
ONAGRACEAE



144 *Ludwigia leptocarpa*  
ONAGRACEAE



145 *Ludwigia leptocarpa*  
ONAGRACEAE



146 *Ludwigia leptocarpa*  
ONAGRACEAE



147 *Ludwigia leptocarpa*  
ONAGRACEAE



148 *Piper arboreum*  
PIPERACEAE



149 *Piper arboreum*  
PIPERACEAE



150 *Eleusine indica*  
POACEAE



151 *Eleusine indica*  
POACEAE



152 *Eragrostis pilosa*  
POACEAE



153 *Triplaris americana*  
POLYGONACEAE



154 *Triplaris americana*  
POLYGONACEAE



155 *Triplaris americana*  
POLYGONACEAE



156 *Triplaris americana*  
POLYGONACEAE



157 *Triplaris americana*  
POLYGONACEAE



158 *Ixora coccinea*  
RUBIACEAE



159 *Ixora coccinea*  
RUBIACEAE



160 *Morinda citrifolia*  
RUBIACEAE

Plants of Rio Branco Park

Valéria da Silva Sampaio & Bruno Edson-Chaves

Universidade Estadual do Ceará – UECE

Photos by V.S. Sampaio. Produced by V.S. Sampaio [valeria.sampaio@uece.br] with the assistance of Juliana Philipp, Field Museum.

© Field Museum (2021) CC BY-NC 4.0. Licensed works are free to use/share/remix with attribution, but commercial use of the original work is not permitted.

[fieldguides.fieldmuseum.org] [1358] version 1 10/2021



161 *Morinda citrifolia*  
RUBIACEAE



162 *Morinda citrifolia*  
RUBIACEAE



163 *Manilkara zapota*  
SAPOTACEAE



164 *Manilkara zapota*  
SAPOTACEAE



165 *Manilkara zapota*  
SAPOTACEAE



166 *Solanum americanum*  
SOLANACEAE



167 *Solanum americanum*  
SOLANACEAE



168 *Solanum paniculatum*  
SOLANACEAE



169 *Solanum paniculatum*  
SOLANACEAE



170 *Solanum paniculatum*  
SOLANACEAE



171 *Talinum fruticosum*  
TALINACEAE



172 *Talinum fruticosum*  
TALINACEAE



173 *Turnera subulata*  
TURNERACEAE



174 *Cecropia palmata*  
URTICACEAE



175 *Priva lappulacea*  
VERBENACEAE



176 *Priva lappulacea*  
VERBENACEAE



177 *Priva lappulacea*  
VERBENACEAE



178 *Stachytarpheta cayennensis*  
VERBENACEAE



179 *Stachytarpheta cayennensis*  
VERBENACEAE



180 *Stachytarpheta cayennensis*  
VERBENACEAE