

Jardín Botánico de Quito, Pichincha, Ecuador

Common Lichens of Quito's Botanical Garden

Domenica Naranjo¹, Alba Yanez-Ayabaca² & Ricardo Zambrano-Cevallos³

¹Pontificia Universidad Católica del Ecuador, ²Universidad Central del Ecuador, ³Jardín Botánico de Quito

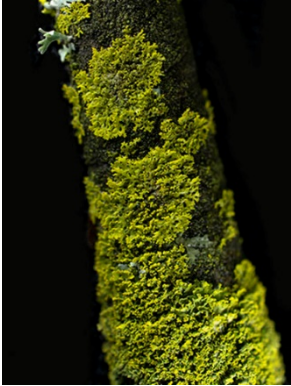
Photos: Domenica Naranjo [dome084@gmail.com]. Produced by Domenica Naranjo. Support by Jardín Botánico de Quito.



© Domenica Naranjo (2022) CC BY-NC 4.0. Licensed works are free to use/share/remix with attribution, but commercial use of the original work is not permitted.

[fieldguides.fieldmuseum.org]

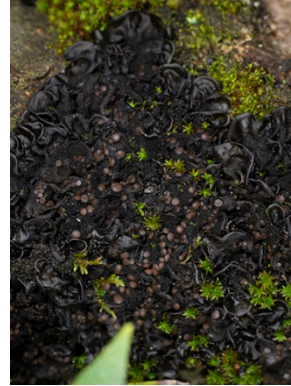
[1466] version 1 1/2022



1 *Candelaria concolor*
CANDELARIAACEAE



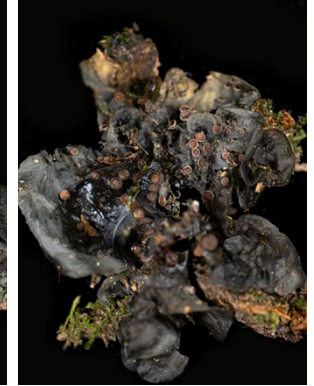
2 *Leptogium coralloideum*
COLLEMATAACEAE



3 *Leptogium cf. milligranum*
COLLEMATAACEAE



4 *Leptogium phyllocarpum*
COLLEMATAACEAE



5 *Leptogium punctulatum*
COLLEMATAACEAE



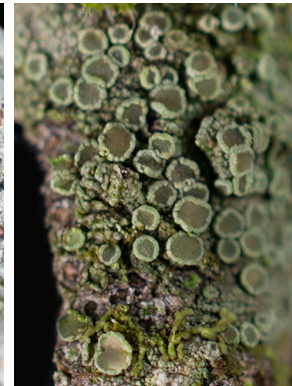
6 *Lecanora* sp. 1
LECANORACEAE



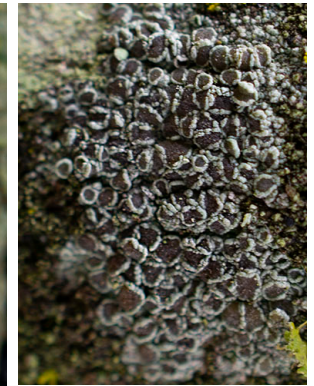
7 *Lecanora* sp. 2
LECANORACEAE



8 *Lecanora* sp. 3
LECANORACEAE



9 *Lecanora* sp. 4
LECANORACEAE



10 *Lecanora* sp. 5
LECANORACEAE



11 *Lecanora* sp. 6
LECANORACEAE



12 *Lecidella scabra*
LECANORACEAE



13 *Canoparmelia* sp.
PARMELIACEAE



14 *Parmotrema austrosinense*
PARMELIACEAE



15 *Parmotrema bangii*
PARMELIACEAE



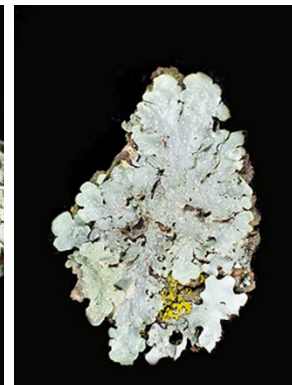
16 *Parmotrema chinense*
PARMELIACEAE



17 *Parmotrema cf. sorediiferum*
PARMELIACEAE



18 *Punctelia cf. microsticta*
PARMELIACEAE



19 *Punctelia cf. lorentzii*
PARMELIACEAE



20 *Punctelia cf. subreducta*
PARMELIACEAE


Jardín Botánico de Quito, Pichincha, Ecuador

Common Lichens of Quito's Botanical Garden

Domenica Naranjo¹, Alba Yanez-Ayabaca² & Ricardo Zambrano-Cevallos³

¹Pontificia Universidad Católica del Ecuador, ²Universidad Central del Ecuador, ³Jardín Botánico de Quito

Photos: Domenica Naranjo [dome084@gmail.com]. Produced by Domenica Naranjo. Support by Jardín Botánico de Quito.

 © Domenica Naranjo (2022) CC BY-NC 4.0. Licensed works are free to use/share/remix with attribution, but commercial use of the original work is not permitted.

[fieldguides.fieldmuseum.org]

[1466] version 1 1/2022



21 *Pseudoparmelia* sp.
PARMELIACEAE



22 *Usnea* sp.
PARMELIACEAE



23 *Heterodermia* sp.
PHYSICIACEAE



24 *Hyperphyscia* sp.
PHYSICIACEAE



25 *Phaeophyscia* sp.
PHYSICIACEAE



26 *Physcia* sp.
PHYSICIACEAE



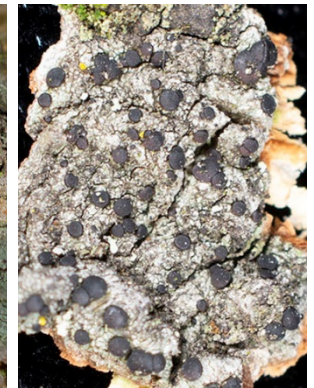
27 *Rinodina* sp.
PHYSICIACEAE



28 *Bacidia* cf. *rosella*
RAMALINACEAE



29 *Bacidia* sp. 1
RAMALINACEAE



30 *Bacidia* sp. 2
RAMALINACEAE



31 *Ramalina celastri*
RAMALINACEAE



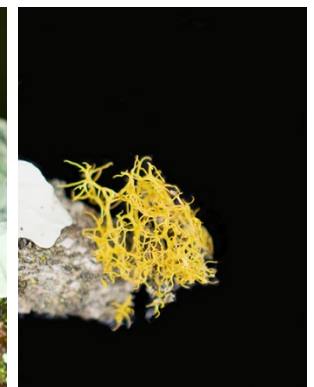
32 *Teloschistes chrysophthalmus*
TELOSCHISTACEAE



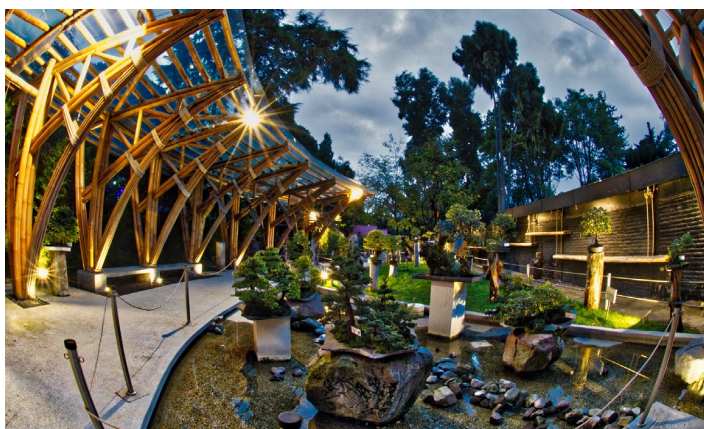
33 *Teloschistes chrysophthalmus*
TELOSCHISTACEAE



34 *Teloschistes exilis*
TELOSCHISTACEAE



35 *Teloschistes flavicans*
TELOSCHISTACEAE



The Botanical Garden of Quito is a unique place located in the heart of Ecuador's capital city, in the middle of the Andean Cordillera at 2800 meters above sea level. The garden has four hectares of green areas where native flora has created an important reservoir of both plant and animal life. Orchids, cacti, carnivorous plants, tree ferns and the Bonsai display make up its most important botanical collections.

The Botanical Garden is crucial in spreading Andean flora conservation awareness within the local community and, without a doubt, is an important touristic place in Quito city.