

Parque Nacional Amboró, Santa Cruz, BOLIVIA

PTERIDOPHYTA de AMBORÓ

Michael A. Sundue - - New York Botanical Garden

Fotos de Michael Sundue & Robin Foster, excepto donde esta indicado. Producido por: R. Foster & T. Wachter, con el apoyo del Moore Foundation., y R. Moran, M. Nee, A. Smith, B. León.

© M. A. Sundue, [msundue@nybg.org] NYBG, 200th St. & Fordham Rd. Bronx, NY 10458-5126 USA [http://www.nybg.org/botany/nee/index.html].

© Environmental & Conservation Programs, The Field Museum, Chicago, IL 60605 USA. [RRC@fmnh.org] [www.fmnh.org/plantguides/] Rapid Color Guide # 191 versión 1



1 Adiantopsis radiata



2 Adiantum latifolium



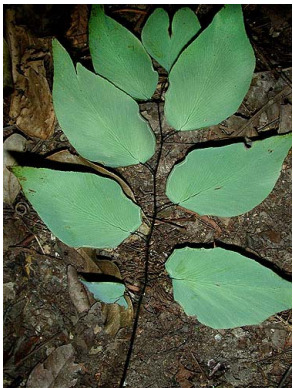
3 Adiantum macrophyllum



4 Adiantum macrophyllum



5 Adiantum peruvianum



6 Adiantum platyphyllum



7 Adiantum poiretii



8 Adiantum pulverulentum



9 Adiantum pulverulentum



10 Alsophila cuspidata



11 Alsophila cuspidata



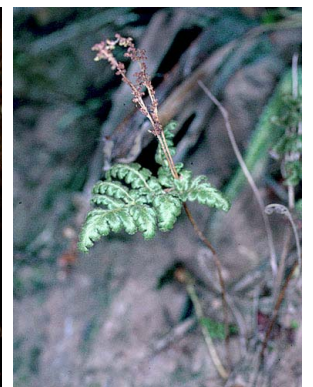
12 Alsophila cuspidata



13 Anemia flexuosa



14 Anemia herzogii



15 Anemia tomentosa



16 Anetium citrifolium



17 Anetium citrifolium



18 Asplenium achalense



19 Asplenium bangii



20 Asplenium bangii

Amboró National Park, Santa Cruz, BOLIVIA

PTERIDOPHYTA of AMBORÓ

WEB VERSION

Michael A. Sundue - - New York Botanical Garden

Photos by Michael Sundue & Robin Foster, except as noted. Produced by: R. B. Foster & T. S. Wachter, with assistance from the Moore Foundation, and R. Moran, M. Nee, A. Smith, B León.
 © M. A. Sundue, [msundue@nybg.org] NYBG, 200th St. & Fordham Rd. Bronx, NY 10458-5126 USA [http://www.nybg.org/botany/nee/index.html]
 © Environmental & Conservation Programs, The Field Museum, Chicago, IL 60605 USA. [RRC@fmnh.org] [www.fmnh.org/plantguides/] Rapid Color Guide # 191 version 1

21 *Asplenium clausenii*22 *Asplenium cuspidatum*23 *Asplenium depauperatum*24 *Asplenium discrepans*25 *Asplenium drepanophyllum*26 *Asplenium drepanophyllum*27 *Asplenium fragrans*28 *Asplenium gilliesii*29 *Asplenium laetum*30 *Asplenium monanthes*31 *Asplenium monanthes*32 *Asplenium serra*

foto: Mary Giblin

33 *Asplenium serra*34 *Asplenium serratum*35 *Asplenium serratum*36 *Asplenium squamosum*37 *Asplenium squamosum*38 *Blechnum appendiculatum*39 *Blechnum appendiculatum*40 *Blechnum auratum*

foto: Mary Giblin

Parque Nacional Amboró, Santa Cruz, BOLIVIA

PTERIDOPHYTA de AMBORÓ

WEB VERSION

Michael A. Sundue - - New York Botanical Garden

Fotos de Michael Sundue & Robin Foster, excepto donde esta indicado. Producido por: R. Foster & T. Wachter, con el apoyo del Moore Foundation., y R. Moran, M. Nee, A. Smith, B. León.
 © M. A. Sundue, [msundue@nybg.org] NYBG, 200th St. & Fordham Rd. Bronx, NY 10458-5126 USA [http://www.nybg.org/botany/nee/index.html].
 © Environmental & Conservation Programs, The Field Museum, Chicago, IL 60605 USA. [RRC@fmnh.org] [www.fmnh.org/plantguides/] Rapid Color Guide # 191 versión 1



41 *Blechnum occidentale*



42 *Blechnum occidentale*



43 *Blechnum penna-marina*



44 *Bolbitis lindigii*



45 *Bolbitis nicotianifolia*



46 *Bolbitis serratifolia*



47 *Botrychium schaffneri*



48 *Botrychium virginianum*



49 *Botrychium virginianum*



50 *Campyloneurum nitidissimum*



51 *Campyloneurum pascoense*
foto: Blanca León



52 *Campyloneurum phyllitidis*



53 *Campyloneurum phyllitidis*



54 *Campyloneurum sphenodes*



55 *Campyloneurum sphenodes*
foto: Monica Arakaki



56 *Cheilanthes bonariensis*



57 *Cheilanthes bonariensis*



58 *Cheilanthes buchtienii*



59 *Cheilanthes myriophylla*
foto: Tim Plowman



60 *Cochlidium serrulatum*

Amboró National Park, Santa Cruz, BOLIVIA

PTERIDOPHYTA of AMBORÓ

WEB VERSION

Michael A. Sundue - - New York Botanical Garden

Photos by Michael Sundue & Robin Foster, except as noted. Produced by: R. B. Foster & T. S. Wachter, with assistance from the Moore Foundation, and R. Moran, M. Nee, A. Smith, B León.

© M. A. Sundue, [msundue@nybg.org] NYBG, 200th St. & Fordham Rd. Bronx, NY 10458-5126 USA [http://www.nybg.org/botany/nee/index.html]

© Environmental & Conservation Programs, The Field Museum, Chicago, IL 60605 USA. [RRC@fmnh.org] [www.fmnh.org/plantguides/] Rapid Color Guide # 191 version 1

61 *Cyathea caracasana*

foto: William Farfán, et al

62 *Cyathea caracasana*

foto: William Farfán, et al

63 *Cyathea caracasana*

foto: William Farfán, et al

64 *Cyathea delgadii*

foto: William Farfán, et al

65 *Cyathea delgadii*

foto: William Farfán, et al

66 *Cyathea delgadii*

foto: William Farfán, et al

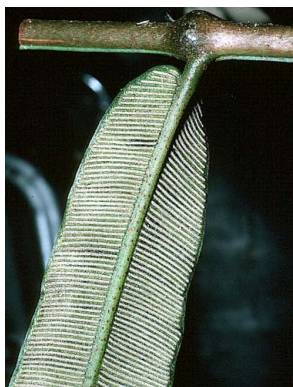
67 *Cystopteris fragilis*68 *Cystopteris fragilis*69 *Cystopteris fragilis*70 *Danaea nodosa*71 *Danaea nodosa*72 *Dicksonia sellowiana*73 *Dicksonia sellowiana*74 *Dicksonia sellowiana*75 *Dicranopteris flexuosa*76 *Diplazium cuneifolium*77 *Diplazium cuneifolium*78 *Diplazium grandifolium*79 *Diplazium stuebelianum*80 *Doryopteris palmata*

foto: J. Mickel, NYBG

Parque Nacional Amboró, Santa Cruz, BOLIVIA

PTERIDOPHYTA de AMBORÓ

Michael A. Sundue -- New York Botanical Garden

Fotos de Michael Sundue & Robin Foster, excepto donde esta indicado. Producido por: R. Foster & T. Wachter, con el apoyo del Moore Foundation., y R. Moran, M. Nee, A. Smith, B. León.
 © M. A. Sundue, [msundue@nybg.org] NYBG, 200th St. & Fordham Rd. Bronx, NY 10458-5126 USA [http://www.nybg.org/botany/nee/index.html].
 © Environmental & Conservation Programs, The Field Museum, Chicago, IL 60605 USA. [RRC@fmnh.org] [www.fmnh.org/plantguides/] Rapid Color Guide # 191 versión 1



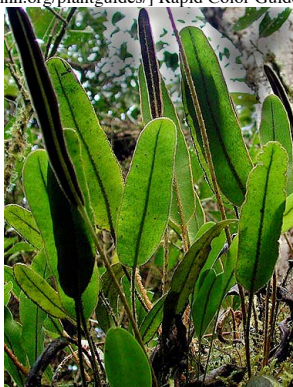
81 *Dryopteris wallichiana*



82 *Dryopteris wallichiana*



83 *Elaphoglossum cuspidatum*



84 *Elaphoglossum engelii*



85 *Elaphoglossum erinaceum*



86 *Elaphoglossum erinaceum*



87 *Elaphoglossum piloselloides*



88 *Equisetum bogotense*



89 *Equisetum giganteum*



90 *Eriosorus cheilanthoides*



91 *Eriosorus cheilanthoides*



92 *Eriosorus flexuosus*



93 *Eriosorus flexuosus*



94 *Eriosorus hirtus*



95 *Hemidictyum marginatum*



96 *Hemidictyum marginatum*



97 *Hemidictyum marginatum*



98 *Histiopteris incisa*



99 *Histiopteris incisa*



100 *Huperzia linifolia*

foto: J. Mickel, NYBG

Amboró National Park, Santa Cruz, BOLIVIA

PTERIDOPHYTA of AMBORÓ

Michael A. Sundue - - New York Botanical Garden

Photos by Michael Sundue & Robin Foster, except as noted. Produced by: R. B. Foster & T. S. Wachter, with assistance from the Moore Foundation, and R. Moran, M. Nee, A. Smith, B León.
 © M. A. Sundue, [msundue@nybg.org] NYBG, 200th St. & Fordham Rd. Bronx, NY 10458-5126 USA [http://www.nybg.org/botany/nee/index.html]
 © Environmental & Conservation Programs, The Field Museum, Chicago, IL 60605 USA. [RRC@fmnh.org] [www.fmnh.org/plantguides/] Rapid Color Guide # 191 version 1



101 *Huperzia linifolia*

foto: Margaret Metz



102 *Huperzia reflexa*



103 *Huperzia talpiphila*



104 *Hymenophyllum peltatum*



105 *Hymenophyllum polyanthos*



106 *Isoetes herzogii*



107 *Jamesonia scalaris*



108 *Lastreopsis effusa*



109 *Lellingeria myosuroides*



110 *Lindsaea stricta*

foto: J. Mickel, NYBG



111 *Lomariopsis japurensis*



112 *Lomariopsis japurensis*

foto: Heike Betz



113 *Lonchitis hirsuta*

foto: J. Mickel, NYBG



114 *Lonchitis hirsuta*

foto: J. Mickel, NYBG



115 *Lophosoria quadripinnata*

foto: J. Mickel, NYBG



116 *Lophosoria quadripinnata*



117 *Lophosoria quadripinnata*



118 *Lycopodiella cernua*



119 *Lycopodium clavatum*



120 *Lycopodium thyooides*

Parque Nacional Amboró, Santa Cruz, BOLIVIA

PTERIDOPHYTA de AMBORÓ

Michael A. Sundue - - New York Botanical Garden

Fotos de Michael Sundue & Robin Foster, excepto donde esta indicado. Producido por: R. Foster & T. Wachter, con el apoyo del Moore Foundation., y R. Moran, M. Nee, A. Smith, B. León.

© M. A. Sundue, [msundue@nybg.org] NYBG, 200th St. & Fordham Rd. Bronx, NY 10458-5126 USA [http://www.nybg.org/botany/nee/index.html].

© Environmental & Conservation Programs, The Field Museum, Chicago, IL 60605 USA. [RRC@fmnh.org] [www.fmnh.org/plantguides/] Rapid Color Guide # 191 versión 1



121 *Lygodium venustum*



122 *Lygodium venustum*



123 *Macrothelypteris torresiana*



124 *Macrothelypteris torresiana*

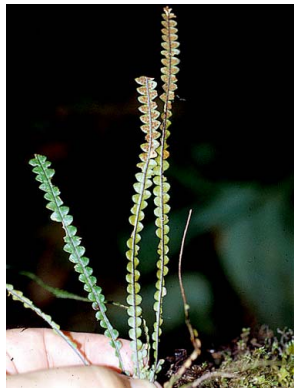


125 *Marattia laevis*

foto: Heike Betz



126 *Marattia laevis*



127 *Melpomene moniliformis*



128 *Microgramma latevegans*



129 *Microgramma percussa*



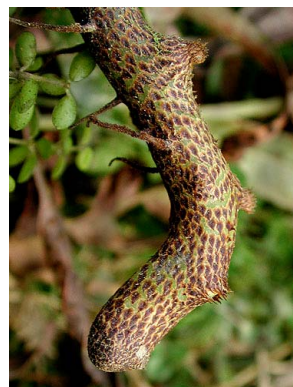
130 *Microgramma percussa*



131 *Microgramma reptans*



132 *Nephrolepis biserrata*



133 *Niphidium anocarpos*



134 *Niphidium anocarpos*



135 *Niphidium crassifolium*



136 *Ophioglossum palmatum*



137 *Ophioglossum palmatum*



138 *Pecluma choquetangensis*



139 *Pecluma filicula*



140 *Pityrogramma calomelanos*

foto: Mary Giblin

Amboró National Park, Santa Cruz, BOLIVIA

PTERIDOPHYTA of AMBORÓ

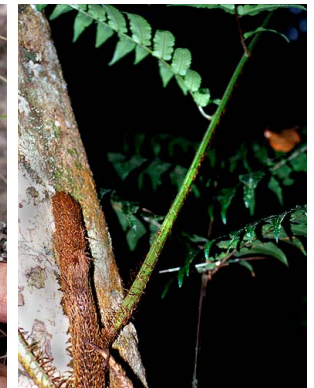
WEB VERSION

Michael A. Sundue - - New York Botanical Garden

Photos by Michael Sundue & Robin Foster, except as noted. Produced by: R. B. Foster & T. S. Wachter, with assistance from the Moore Foundation, and R. Moran, M. Nee, A. Smith, B León.

© M. A. Sundue, [msundue@nybg.org] NYBG, 200th St. & Fordham Rd. Bronx, NY 10458-5126 USA [http://www.nybg.org/botany/nee/index.html]

© Environmental & Conservation Programs, The Field Museum, Chicago, IL 60605 USA. [RRC@fmnh.org] [www.fmnh.org/plantguides/] Rapid Color Guide # 191 version 1

141 *Pityrogramma calomelanos*
foto: Mary Giblin142 *Pityrogramma ebenea*143 *Pityrogramma ebenea*144 *Pityrogramma trifoliolata*145 *Pityrogramma trifoliolata*146 *Plagiogyria semicordata*147 *Pleopeltis buchtienii*148 *Pleopeltis fraseri*149 *Pleopeltis macrocarpa*150 *Polybotrya caudata*151 *Polybotrya caudata*152 *Polybotrya fractiserialis*153 *Polybotrya fractiserialis*154 *Polypodium decumanum*155 *Polypodium fraxinifolium*156 *Polypodium polystichum*157 *Polypodium polystichum*158 *Polypodium remotum*159 *Polystichum amboroense*160 *Polystichum solomonii*

Parque Nacional Amboró, Santa Cruz, BOLIVIA

PTERIDOPHYTA de AMBORÓ

Michael A. Sundue - - New York Botanical Garden

Fotos de Michael Sundue & Robin Foster, excepto donde esta indicado. Producido por: R. Foster & T. Wachter, con el apoyo del Moore Foundation., y R. Moran, M. Nee, A. Smith, B. León.

© M. A. Sundue, [msundue@nybg.org] NYBG, 200th St. & Fordham Rd. Bronx, NY 10458-5126 USA [http://www.nybg.org/botany/nee/index.html].

© Environmental & Conservation Programs, The Field Museum, Chicago, IL 60605 USA. [RRC@fmnh.org] [www.fmnh.org/plantguides/] Rapid Color Guide # 191 versión 1



161 Polystichum solomonii



162 Polystichum solomonii



163 Polytaenium cajenense



164 Polytaenium cajenense



165 Polytaenium lineatum

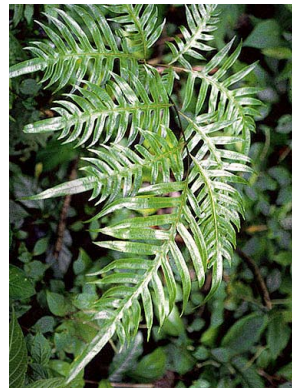
foto: Heike Betz



166 Psilotum nudum



167 Psilotum nudum



168 Pteris altissima



169 Pteris podophylla



170 Pteris podophylla

foto: Monica Palacios-Rios



171 Pteris quadriaurita

foto: J. Mickel, NYBG



172 Schizaea elegans



173 Schizaea elegans

foto: Heike Betz



174 Schizaea poeppigiana



175 Selaginella haematodes

foto: Tyana Wachter



176 Selaginella microphylla



177 Selaginella novae-hollandiae



178 Selaginella sellowii



179 Selaginella sellowii



180 Selaginella silvestris

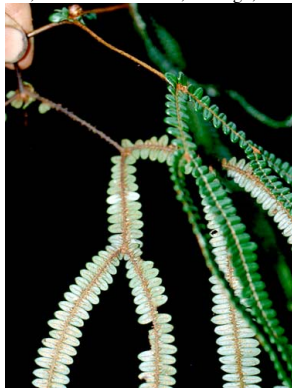
Amboró National Park, Santa Cruz, BOLIVIA
PTERIDOPHYTA of AMBORÓ

Michael A. Sundue - - New York Botanical Garden

Photos by Michael Sundue & Robin Foster, except as noted. Produced by: R. B. Foster & T. S. Wachter, with assistance from the Moore Foundation, and R. Moran, M. Nee, A. Smith, B León.
 © M. A. Sundue, [msundue@nybg.org] NYBG, 200th St. & Fordham Rd. Bronx, NY 10458-5126 USA [http://www.nybg.org/botany/nee/index.html]
 © Environmental & Conservation Programs, The Field Museum, Chicago, IL 60605 USA. [RRC@fmnh.org] [www.fmnh.org/plantguides/] Rapid Color Guide # 191 version 1



181 *Selaginella silvestris*



182 *Sticherus revolutus*



183 *Sticherus revolutus*



184 *Sticherus tomentosus*



185 *Sticherus tomentosus*

foto: Heike Betz



186 *Tectaria incisa* var. *incisa*



187 *Tectaria incisa* fo. *vivipara*

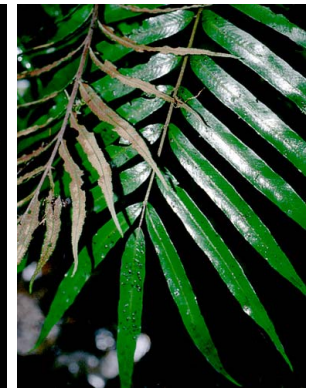


188 *Tectaria incisa*

foto: Tyana Wachter



189 *Terpsichore lanigera*



190 *Thelypteris angustifolia*



191 *Thelypteris angustifolia*



192 *Thelypteris cheilanthoides*



193 *Thelypteris cheilanthoides*



194 *Thelypteris jamesonii*



195 *Thelypteris jamesonii*



196 *Thelypteris lancea*



197 *Thelypteris rufa* vel aff.



198 *Trichomanes diversifrons*



199 *Trichomanes diversifrons*



200 *Vittaria lineata*

foto: Mary Giblin