

Common **FROGS** of the **Osa Peninsula, COSTA RICA**

Tanya Hawley Matlaga -- Susquehanna University

Photos by T. Hawley Matlaga, except where noted. Produced by T. Wachter & R. Foster, with support from the Ellen Hyndman fund and the Andrew Mellon Foundation.
 © T. Hawley Matlaga [matlagat@susqu.edu] Susquehanna University, Dept. of Biology, Selinsgrove, PA. Support from the Environmental Protection Agency and Friends of the Osa.
 © Keller Science Action Center, The Field Museum, Chicago, IL [fieldguides@fieldmuseum.org] [fieldguides.fieldmuseum.org] Rapid Color Guide #246 version 2 09/2016



1 *Allobates talamancae*
 <25 mm
 AROMOBATIDAE



2 *Incilius aucoinae*
 <103 mm
 BUFONIDAE



3 *Rhinella marina*
 foto: David Matlaga <175 mm
 BUFONIDAE



4 *Rhinella marina* (eggs)
 foto: Paul Meza-Ramos
 BUFONIDAE



5 *Cochranella granulosa*
 <32 mm
 CENTROLENIDAE



6 *Cochranella granulosa* (eggs)
 CENTROLENIDAE



7 *Hyalinobatrachium colymbiphllum*
 <29 mm
 CENTROLENIDAE



8 *Hyalinobatrachium valerioi*
 <26 mm
 CENTROLENIDAE



9 *H. valerioi* (eggs)
 CENTROLENIDAE



10 *Teratohyla pulverata*
 <33 mm
 CENTROLENIDAE



11 *Teratohyla pulverata* (eggs)
 CENTROLENIDAE



12 *Craugastor fitzingeri*
 <103 mm
 CRAUGASTORIDAE



13 *Craugastor rugosus*
 <69 mm
 CRAUGASTORIDAE



14 *Craugastor stejnegerianus*
 <22 mm
 CRAUGASTORIDAE



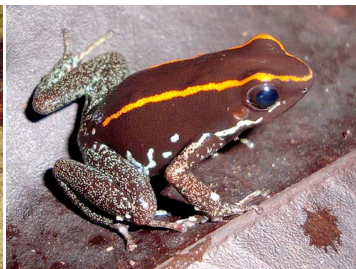
15 *Pristimantis cruentus*
 <48 mm
 CRAUGASTORIDAE



16 *Dendrobates auratus*
 <42 mm
 DENDROBATIDAE



17 *Oophaga granulifera*
 <25 mm
 DENDROBATIDAE



18 *Phyllobates vittatus*
 <24 mm
 DENDROBATIDAE



19 *Diasporus diastema*
 foto: Rick Stanley <24 mm
 ELEUTHERODACTYLIDAE



20 *Agalychnis callidryas*
 <71 mm
 HYLIDAE

Common **FROGS** of the **Osa Peninsula, COSTA RICA**

2

Tanya Hawley Matlaga -- Susquehanna University

Photos by T. Hawley Matlaga, except where noted. Produced by T. Wachter & R. Foster, with support from the Ellen Hyndman fund and the Andrew Mellon Foundation.
 © T. Hawley Matlaga [matlagat@susqu.edu] Susquehanna University, Dept. of Biology, Selinsgrove, PA. Support from the Environmental Protection Agency and Friends of the Osa.
 © Keller Science Action Center, The Field Museum, Chicago, IL [fieldguides@fieldmuseum.org] [fieldguides.fieldmuseum.org] Rapid Color Guide #246 version 2 09/2016



21 *Agalychnis spurrelli*
 foto: Rick Stanley <68 mm
 HYLIDAE



22 *Dendropsophus ebraccatus*
 <35 mm
 HYLIDAE



23 *D. ebraccatus* (eggs)
 HYLIDAE



24 *Dendropsophus microcephala*
 <31 mm
 HYLIDAE



25 *Hypsiboas rosenbergi*
 <82 mm
 HYLIDAE



26 *Hypsiboas rosenbergi* (eggs)
 HYLIDAE



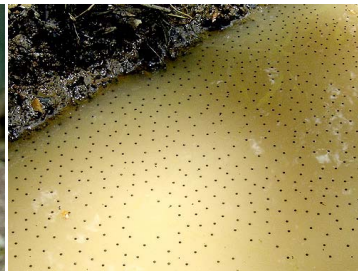
27 *Scinax boulengeri*
 <53 mm
 HYLIDAE



28 *Scinax elaeochrous*
 <40 mm
 HYLIDAE



29 *Smilisca phaeota*
 <78 mm
 HYLIDAE



30 *Smilisca phaeota* (eggs)
 HYLIDAE



31 *Smilisca sordida*
 <64 mm
 HYLIDAE



32 *Smilisca sordida* (eggs)
 HYLIDAE



33 *Trachycephalus venulosus*
 <114 mm
 HYLIDAE



34 *Engystomops pustulosus*
 <35 mm
 LEIUPERIDAE



35 *E. pustulosus* (eggs)
 LEIUPERIDAE



36 *Leptodactylus bolivianus*
 <120 mm
 LEPTODACTYLIDAE



37 *Leptodactylus poecilochilus*
 <50 mm
 LEPTODACTYLIDAE



38 *Leptodactylus savagei*
 <185 mm
 LEPTODACTYLIDAE



39 *Leptodactylus savagei* (eggs)
 LEPTODACTYLIDAE



40 *Pristimantis cruentus*
 <48 mm
 STRABOMANTIDAE