

# FLORA OF PARAÍBA STATE – NORTHEASTERN BRAZIL

## PLANTS OF THE CURIMATAÚ PARAIBANO

1

Valdeci F. Sousa<sup>1</sup>, Carlos Alberto Garcia Santos<sup>1</sup> & Leonardo M. Versieux<sup>2</sup>

<sup>1</sup> Universidade Federal de Campina Grande, Centro de Educação e Saúde, Cuité, PB, Brazil

<sup>2</sup> Universidade Federal do Rio Grande do Norte, Departamento de Botânica, Ecologia e Zoologia, Natal, RN, Brazil

Photos and Production: Valdeci F. Sousa. Pós-production: Juliana Philipp.  
© V.F. Sousa [valdeci.fontes@yahoo.com.br].

[fieldguides.fieldmuseum.org]

[776] version 1 11/2019



1 *Justicia aequilabris*  
ACANTHACEAE



2 *Justicia thunbergioides*  
ACANTHACEAE



3 *Ruellia asperula*  
ACANTHACEAE



4 *Ruellia bahiensis*  
ACANTHACEAE



5 *Ruellia paniculata*  
ACANTHACEAE



6 *Hydrocleys martii*  
ALISMATACEAE



7 *Copernicia prunifera*  
ARECACEAE



8 *Aristolochia disticha*  
ARISTOLOCHIACEAE



9 *Pyrostegia venusta*  
BIGNONIACEAE



10 *Cordia trichotoma*  
BORAGINACEAE



11 *Euploca procumbens*  
BORAGINACEAE



12 *Heliotropium elongatum*  
BORAGINACEAE



13 *Myriopus rubicundus*  
BORAGINACEAE



14 *Myriopus rubicundus*  
BORAGINACEAE



15 *Varronia globosa*  
BORAGINACEAE



16 *Varronia globosa*  
BORAGINACEAE



17 *Varronia leucocephala*  
BORAGINACEAE



18 *Varronia dardani*  
BORAGINACEAE



19 *Aechmea aquilega*  
BROMELIACEAE



20 *Aechmea aquilega*  
BROMELIACEAE

# FLORA OF PARAÍBA STATE – NORTHEASTERN BRAZIL PLANTS OF THE CURIMATAÚ PARAIBANO

2

Valdeci F. Sousa<sup>1</sup>, Carlos Alberto Garcia Santos<sup>1</sup> & Leonardo M. Versieux<sup>2</sup>

<sup>1</sup> Universidade Federal de Campina Grande, Centro de Educação e Saúde, Cuité, PB, Brazil

<sup>2</sup> Universidade Federal do Rio Grande do Norte, Departamento de Botânica, Ecologia e Zoologia, Natal, RN, Brazil

Photos and Production: Valdeci F. Sousa. Pós-production: Juliana Philipp.  
© V.F. Sousa [valdeci.fontes@yahoo.com.br].

[fieldguides.fieldmuseum.org]

[776] version 1 11/2019



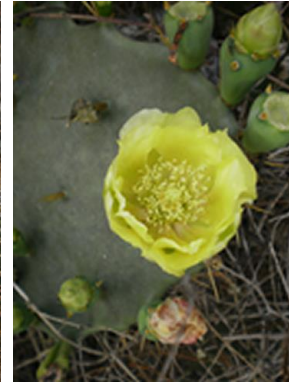
21 *Bromelia laciniosa*  
BROMELIACEAE



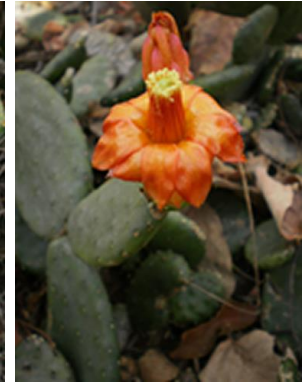
22 *Orthophytum disjunctum*  
BROMELIACEAE



23 *Melocactus zehntneri*  
CACTACEAE



24 *Opuntia dillenii*  
CACTACEAE



25 *Tacinga inamoena*  
CACTACEAE



26 *Tarenaya longicarpa*  
CLEOMACEAE



27 *Commelina obliqua*  
COMMELINACEAE



28 *Ipomoea bahiensis*  
CONVOLVULACEAE



29 *Ipomoea carnea*  
CONVOLVULACEAE



30 *Ipomoea marcellia*  
CONVOLVULACEAE



31 *Ipomoea parasitica*  
CONVOLVULACEAE



32 *Dioscorea campestris*  
DIOSCOREACEAE



33 *Croton sonderianus*  
EUPHORBIACEAE



34 *Dalechampia scandens*  
EUPHORBIACEAE



35 *Euphorbia hirta*  
EUPHORBIACEAE



36 *Euphorbia hyssopifolia*  
EUPHORBIACEAE



37 *Indigofera suffruticosa*  
FABACEAE



38 *Galphimia brasiliensis*  
MALPIGHIACEAE



39 *Thryallis longifolia*  
MALPIGHIACEAE



40 *Corchorus argutus*  
MALVACEAE

# FLORA OF PARAÍBA STATE – NORTHEASTERN BRAZIL PLANTS OF THE CURIMATAÚ PARAIBANO

3

Valdeci F. Sousa<sup>1</sup>, Carlos Alberto Garcia Santos<sup>1</sup> & Leonardo M. Versieux<sup>2</sup>

<sup>1</sup> Universidade Federal de Campina Grande, Centro de Educação e Saúde, Cuité, PB, Brazil

<sup>2</sup> Universidade Federal do Rio Grande do Norte, Departamento de Botânica, Ecologia e Zoologia, Natal, RN, Brazil

Photos and Production: Valdeci F. Sousa. Pós-production: Juliana Philipp.  
© V.F. Sousa [valdeci.fontes@yahoo.com.br].

[fieldguides.fieldmuseum.org]

[776] version 1 11/2019



41 *Gaya domingensis*  
MALVACEAE



42 *Herissantia tiubae*  
MALVACEAE



43 *Herissantia tiubae*  
MALVACEAE



44 *Malachra fasciata*  
MALVACEAE



45 *Melochia tomentosa*  
MALVACEAE



46 *Sida brittonii*  
MALVACEAE



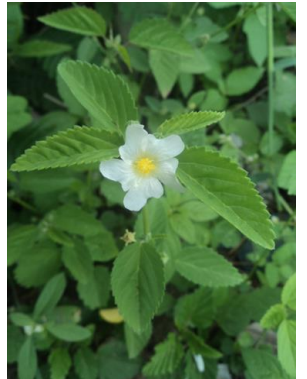
47 *Sida cordifolia*  
MALVACEAE



48 *Sida galheirensis*  
MALVACEAE



49 *Sida planicaulis*  
MALVACEAE



50 *Sida spinosa*  
MALVACEAE



51 *Sidastrum micranthum*  
MALVACEAE



52 *Sidastrum paniculatum*  
MALVACEAE



53 *Scoparia dulcis*  
PLANTAGINACEAE



54 *Passiflora cincinnata*  
PASSIFLORACEAE



55 *Passiflora foetida*  
PASSIFLORACEAE



56 *Piriqueta guianensis*  
PASSIFLORACEAE



57 *Turnera subulata*  
PASSIFLORACEAE



58 *Chloris barbata*  
POACEAE



59 *Melinis repens*  
POACEAE



60 *Urochloa mollis*  
POACEAE

# FLORA OF PARAÍBA STATE – NORTHEASTERN BRAZIL PLANTS OF THE CURIMATAÚ PARAIBANO

Valdeci F. Sousa<sup>1</sup>, Carlos Alberto Garcia Santos<sup>1</sup> & Leonardo M. Versieux<sup>2</sup>

<sup>1</sup> Universidade Federal de Campina Grande, Centro de Educação e Saúde, Cuité, PB, Brazil

<sup>2</sup> Universidade Federal do Rio Grande do Norte, Departamento de Botânica, Ecologia e Zoologia, Natal, RN, Brazil

Photos and Production: Valdeci F. Sousa. Pós-production: Juliana Philipp.  
© V.F. Sousa [valdeci.fontes@yahoo.com.br].

[fieldguides.fieldmuseum.org]

[776] version 1 11/2019



61 *Portulaca mucronata*  
PORTULACACEAE



62 *Richardia grandiflora*  
RUBIACEAE



63 *Cardiospermum corindum*  
SAPINDACEAE



64 *Nicandra physalodes*  
SOLANACEAE



65 *Nicandra physalodes*  
SOLANACEAE



66 *Solanum paniculatum*  
SOLANACEAE



67 *Solanum rhytidoandrum*  
SOLANACEAE



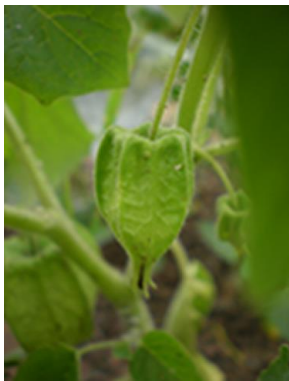
68 *Solanum rhytidoandrum*  
SOLANACEAE



69 *Physalis angulata*  
SOLANACEAE



70 *Physalis angulata*  
SOLANACEAE



71 *Physalis angulata*  
SOLANACEAE



72 *Solanum agrarium*  
SOLANACEAE



73 *Solanum agrarium*  
SOLANACEAE



74 *Solanum americanum*  
SOLANACEAE



75 *Typha domingensis*  
TYPHACEAE



76 *Lantana camara*  
VERBENACEAE



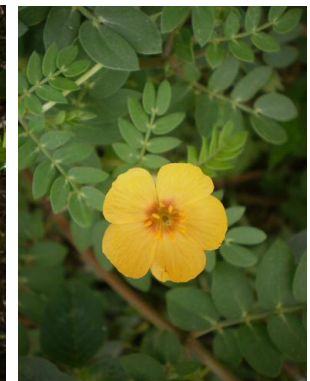
77 *Stachytarpheta coccinea*  
VERBENACEAE



78 *Pombalia calceolaria*  
VIOLACEAE



79 *Cissus verticillata*  
VITACEAE



80 *Kallstroemia tribuloides*  
ZYGOPHYLLACEAE